

UC Irvine

UC Irvine Previously Published Works

Title

Precision Technique for Splenectomy Limits Mouse Stress Responses for Accurate and Realistic Measurements for Investigating Inflammation and Immunity.

Permalink

<https://escholarship.org/uc/item/5c89q1pg>

Journal

Bio-protocol, 9(15)

ISSN

2331-8325

Authors

Li, Shengwen Calvin
Rangel, Anthony D
Kabeer, Mustafa H

Publication Date

2019

DOI

10.21769/bioprotoc.3317

Peer reviewed

Manuscript Information

Journal name: Bio-protocol
NIHMS ID: NIHMS1047908
Manuscript Title: Precision Technique for Splenectomy Limits Mouse Stress Responses for Accurate and Realistic Measurements for Investigating Inflammation and Immunity
Submitter: Shengwen Calvin Li (shengwel@uci.edu, shengwen.li@alumni.mssm.edu, choc.uci@gmail.com)

Manuscript Files

Type	Fig/Table #	Filename	Size	Uploaded
manuscript		Bio-protocol3317.pdf	815413	2019-08-26 16:13:25

This PDF receipt will only be used as the basis for generating PubMed Central (PMC) documents. PMC documents will be made available for review after conversion. Any corrections that need to be made will be done at that time. No materials will be released to PMC without the approval of an author. Only the PMC documents will appear on PubMed Central -- this PDF Receipt will not appear on PubMed Central.

Precision Technique for Splenectomy Limits Mouse Stress Responses for Accurate and Realistic Measurements for Investigating Inflammation and Immunity

Shengwen Calvin Li^{1, 2, *}, Anthony D. Rangel¹ and Mustafa H. Kabeer^{3, 4}

¹CHOC Children's Research Institute, Neuro-oncology and Stem Cell Research Laboratory (NSCL), Center for Neuroscience Research (CNR), Children's Hospital of Orange County (CHOC), 1201 W. La Veta Ave.; Orange, CA 92868-3874, United States of America; ²Department of Neurology, University of California-Irvine School of Medicine, 200 S Manchester Ave Ste 206, Orange, CA 92868, United States of America; ³Pediatric Surgery, Children's Hospital of Orange County, Orange, CA 92868-3874, United States of America; ⁴Department of Surgery, University of California-Irvine School of Medicine, 333 City Blvd. West, Suite 1600, Orange, CA 92868, United States of America

*For correspondence: shengwel@uci.edu

[Abstract] Splenectomy in an animal model requires a standardized technique utilizing best practice to avoid variability which can result in adverse impact to the animal resulting in flawed physiologic responses simply due to technique rather than to the studied variables. In the case of the spleen, often investigators are analyzing the animal immune or inflammatory responses. Surgical splenectomy involves many variables from the training and expertise of the surgeon, which directly correlates to surgical technique to the length of operation and ease of the procedure. This operation, in turn, impacts blood loss and insensible fluid losses, sterile technique, unintended trauma to the spleen and surrounding organs, the length of the incision and the duration of the operation with more prolonged exposure to anesthetic agents. All these variables ultimately play a significant role in the experiment since they directly affect the response of the model in terms of inflammation, immune activation, or even suppression. Undesired variables such as these go unnoticed and lead to inaccurate and misleading data.

Keywords: Blunt trauma, Infectious diseases, Animal model, Critical care, Autologous cell reperfusion, Splenectomy

[Background] The spleen produces protective humoral antibodies via plasma cells, harbors transient and stable populations of B and T cells, filters particulate antigens, and is a reservoir for red and white blood cells. There are specific helper T cells that migrate to and from the spleen serving a role in tumor surveillance and antigen recognition. It has also long been recognized as a domicile for specific B cell populations affecting the individual's ability to respond to specific gram-negative encapsulated bacteria such as *Meningococcus*, *Streptococcus*, and *Haemophilus*. Splenectomy is sometimes necessary in cases of hemolytic anemias with splenomegaly from hereditary spherocytosis or sickle cell disease or in cases of thrombocytopenia, trauma, and even in some instances of malaria. In many instances, pediatric surgeons try to preserve some splenic function to preserve some immune function and avert long term risks of pulmonary hypertension by performing a partial splenectomy saving about 20-30% of

the total splenic mass (Tastaldi *et al.*, 2019). Sometimes due to the inadequate vascular supply of the upper pole of the spleen or in cases of hilar involvement of lesions or massive trauma, total splenectomy may be the only option. Asplenia may result in increased risks of post-splenectomy sepsis, pulmonary hypertension and even some speculation of increased risk of Type II diabetes, childhood obesity (Szendroi *et al.*, 1997) and even inadequate cellular repair responses after cardiac ischemia (Costi *et al.*, 2018).

Recent reports show that therapeutic modality for efficient antigen delivery to spleen shows promising for conquering tumor growth and progression (Shimizu *et al.*, 2018). Current immunotherapy elevated the splenic level of IL-1 β , IL-4, IL-10, IL-17, IFN- γ , and TNF- α for immunomodulatory effects of cancer progression (Merheb *et al.*, 2019). Pediatric surgeons have advanced laparoscopic partial splenectomy to preserve hematological functions of the organ while trying to blunt or ameliorate hemolytic dysfunction (Serra *et al.*, 2018). All these studies require the optimal performance of splenectomy to gain immune benefits of spleen function.

Surgery for splenectomy can involve many variables from training and expertise of the surgeon, surgical technique, length of operation, ease of the procedure, blood and fluid loss, sterile technique, trauma to the spleen or other tissues and traumatic manipulation, length of incision and length of exposure to anesthetic agents.

We provide some guidelines for the standardization of the technique for splenectomy and some thoughts in order to create a procedural best practice protocol such that resulting data can have less contamination by factors that can truly impact the right metrics being evaluated such as the degree of inflammation or immunity.

Materials and Reagents

A. Animal study for splenectomy

1. Silicon tubing (Patterson Scientific, Various Different colors per tubing use, which fit Anesthetic Vaporizer (Patterson Scientific, catalog number: 78703584)
2. Balb/C female mice (Jackson Lab, Bar Harbor, ME) (below for specifics)
Balb/C female mice weighing 20-25 g (age of 8 weeks) were acquired for the experiment. The mice were free from pathogens and kept in filter isolation throughout the study. They were housed in an accredited animal care facility at the CHOC Children's Hospital Research Institute and placed on a regular photoperiod with a normal temperature and given laboratory chow and water, all under standard guidelines.
3. The filter (Animal Care Systems Inc., Centennial, Colorado, catalog number: C79037B) set which is recommended with Anesthetic Vaporizer (Patterson Scientific, catalog number: 78703584)
4. Laboratory chow (Animal Care Systems Inc., Centennial, Colorado, catalog number: T.2919) and water

B. Operative Materials

1. Absorbable suture (Coated VICRYL*Plus, antibacterial with Irgacare MP* Polyglactin 910 suture, undyed braided, Ethicon Inc.) (Ethicon | J&J Medical Devices, Johnson & Johnson, Somerville, NJ)
2. Ketamine/xylazine (dose: 120/20 mg/kg): Ketamine (Ketaset, Fort Dodge Animal Health, Fort Dodge, IA), xylazine (Anased, Akorn, Decatur, IL)
3. Codeine (1 mg/kg): PubChem SID: 378149847, Purchasable Chemical: C-006_CERILLIAN, (Sigma-Aldrich, Saint Louis, MO, United States, 63103)
4. PBS [Phosphate Buffered Saline (1x), 6.7 mM (PO₄) without calcium or magnesium] (Lonza, catalog number: 17-516F)
5. 5% FCS (Atlanta Biologicals, Flowery Branch, GA)
6. Betadine solution, Iodine solution: Betadine® is from Purdue Products, LP (Stamford, CT) (with an isopropyl alcohol application between the steps for Preoperative Skin Preparation)
7. ChloroPrep™, and DuraPrep™ solution (3M Health Care, St. Paul, MN)
8. Hanks' balanced salt solution (HBSS) (Thermo Fisher Scientific, catalog number: 14025092)
9. Isoflurane (Piramal Critical Care Inc., Bethlehem, PA)

Note: We got it directly from the Veterinarian, by prescription.

Equipment

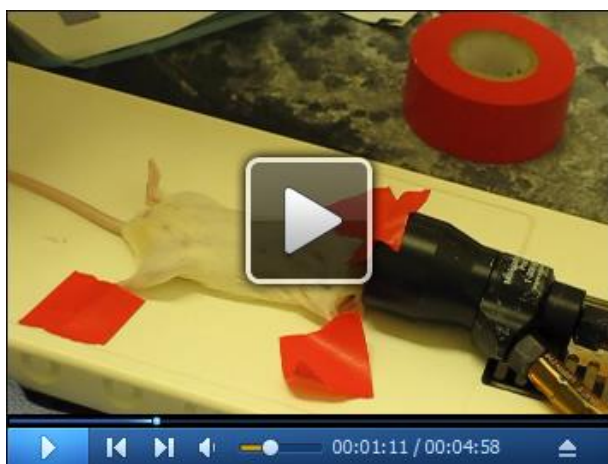
1. Scissors (Fine Science Tools, catalog number: 11058-11)
2. Precisa Bj-2100d Precision Laboratory Balance 2, 100 g x 0.1 g (Digital Analytical Electronic Balance Laboratory Lab Precision Scale) (Precisa Gravimetrics AG, CH-8953 Dietikon, Switzerland)
3. Surgical knife, Scalpel (Bard-Parker, catalog number: 372611)
4. Twisters: Stainless Steel AISI-420 (Rock-Well-Hardness 48-58)
 - a. Wire Twister, Neurosurgery, Sternal Wire Twister Needle Holder 18 cm hole forceps TC gold surgical suture) (World Precision Instruments, Sarasota, FL)
 - b. Vital WEBSTER Needle Holders (BD V. Mueller, catalog number: RH2561)
5. Oxygen tank
6. Smooth forceps (Fine Science Tools, catalog number: 11000-13)
7. Anesthetic Vaporizer (Patterson Scientific, catalog number: 78703584)
8. The nose cone, Anesthesia Machine (Patterson Scientific, catalog number: 78914722)
9. Dry cotton-tipped applicator (Q tip): Sterile Cotton Tipped Applicators (Thomas Scientific, Waltham, MA, catalog number: 1213Q15, Manufactory number: 25-806 10WC)
10. Cautery pen (Manufactory number: AA03X; Tiger catalog number: TM77563) with high temperature (Bovie® Medical eye cautery) (Symmetry Surgical, Antioch, TN)
11. Heat lamp (Fisher Scientific, Thomas Scientific, Waltham, MA, catalog number: NC9631062)
12. Induction Chamber (Patterson Scientific, catalog number: 78917833)

13. Portable Anesthesia Machine (PAM) (Patterson Scientific, catalog number: 78914722)

Procedure

A. Anesthesia for splenectomy

1. Preparation for anesthesia and determination of sufficient anesthesia for splenectomy.
2. Prepare a sufficient amount of isoflurane. Place into the liquid chamber of the vaporizer (Anaesthetics Vaporizer, Patterson Scientific, as operated by anesthesia technician, see Video 1.)



Video 1. Precision technique for mouse splenectomy. This video was made at CHOC Children's Research Institute according to guidelines from the CHOC Children's Research Institute on Animal Care and approved by the Animal Research Ethics Board of CHOC Children's Research Institute under protocol IACUC#_160501.

B. Anesthesia procedure

1. Attach silicon tubing to induction chamber (red into induction chamber, purple leading out of induction chamber). Attach the long purple line to the vacuum system of the building.
2. Turn on the waste pump, attach oxygen manifold to an oxygen tank.
3. Turn on an oxygen tank, open oxygen flowmeter. Set the flow rate to 0.9 L/s for oxygen flow rate and 5% isoflurane. Open flow hose to the induction chamber.
4. Place mouse into induction chamber. Observe for the mouse to begin to take deep breaths. The mouse is sufficiently anesthetized when breathing rate drops below 60 breaths per minute.

C. Splenectomy procedure

1. Preparation of surgery

All surgical tools should be sterilized between surgeries appropriate with the nature of tools. Surgical instruments are set up on a sterile surgical table along with sterile supplies such as suture, non-absorbable, suture, forceps, a surgical knife, twistors, scissors. The anesthetized

mouse is laid down on the table with nose encased within the nose cone supplying the inhalational gas for anesthesia. The skin is sterilized with iodine solution (ChlorPrep™, and DuraPrep™ solution).

2. Incision of skin

A 0.5 cm skin incision is made in vertical midline abdomen just below the xyphoid process with fine scissors. The midline fascia is easily identified just under the skin incision, and scissors can be used to cut a midline incision for the same length.

Note: Be careful to not go into the xyphoid cartilage or any higher so that there is no entry into the thorax, which will result in pneumothorax and death of the mouse.

3. Mobilization of the spleen

The spleen is brought to the midline incision from the left upper quadrant by bringing out the omentum with the use of smooth forceps and a cotton tip applicator to drag it outward in view.

4. The spleen is removed to separate from the stomach

The spleen is held up with the smooth forceps, and an eye cautery with a heated tip is utilized to cauterize the attachments and the vessels to the hilum. Often, this portion of handling the spleen and dividing the vessels can be traumatic and result in significant blood loss when performed by untrained or inexperienced individuals. The purpose of some of these simple techniques is to limit trauma and stress to the animal, which are critical factors in avoiding significant systemic responses which can grossly alter the inflammatory and immune response. It is critical to cauterizing attached vessels with a cautery pen using the splenic vessel-preserving technique (Kim *et al.*, 2019).

5. The midline fascial defect is closed with 4-0 vicryl sutures and skin is closed with interrupted 4-0 Vicryl suture with using Wire Twister for Neurosurgery. Five stitches are used to close the skin opening of 0.5 cm length. (It is the surgeon, who specified the type of knots for patient's operation, namely, Surgical Tie–Instrument Technique that shows a simple square knot being tied with forceps as shown in the video clip).

6. The mouse is anesthetized for a procedure that lasts about 5-10 min in duration, and the mouse is kept under the heat lamp to avoid hypothermia. Also, one cc of saline is given subcutaneously to replace some of the insensible fluid losses during surgery.

Note: The Steps C2-C5 should be completed within 10 min.

D. Recovery of post-splenectomy

1. Mice are observed for minutes after surgery to ensure adequate analgesia and again on hourly intervals during the day of surgery for 4 h. Animal appearance, activity, and behavior (*e.g.*, food and water intake) are closely monitored as indications of pain and discomfort. The analgesic drug (Codeine, buprenex, oxycodone, morphine, hydromorphone, *i.m.* injection) is used if the animals appear in pain as evidenced by visual observation (jerking motions, lack of movement, significant weight loss, vocalizing, and lack of grooming, auditory observation of squealing) for 30 min and again in 4 h post-surgery.

- Codeine is given twice daily for first a few days after the surgery if needed. Post-Procedure Supportive Care: Appropriate food and water are ensured on the cage floor after the procedure. The wound sutures are absorbed through time. The analgesic, tranquilizing or neuromuscular blocking agent(s) and post-anaesthetics recovery: Ketamine/xylazine (dose: 120/20 mg/kg) or Codeine (1 mg/kg), are applied.

Data analysis

Representative results:

Surgical splenectomy involves many variables from the training and expertise of the surgeon, which directly correlates to surgical technique to the length of operation and ease of the procedure. The actual surgery time varied from the skilled surgeon to two trainees, as shown in Figure 1. The actual surgery time and related complications impacted the recovery time as shown from 5.4 min (running around after the surgery, refer to the end of Video 1), to 2-3 h. Full recovery usually required about a week. Specifically, the skilled surgeon took an average of 7.98 min in the range of 5.32-10.54 min, with ten mice (total 10 mice) to survive up to 42-63 days (sacrificed). The Trainee 1 took the average 11.49 min in the range of 11.49-18.12 min, with six mice (total 6) survived 2-14 days; the trainee 2, 20.43 min, in the range of 18.54-22.36 min, with three mice (total 3) survived 1-5 days (Figure 1).

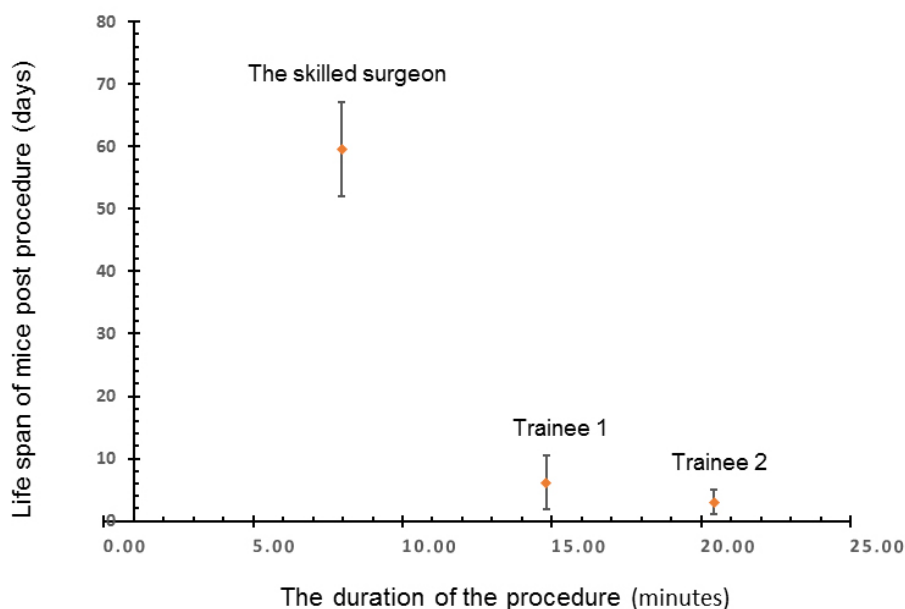


Figure 1. Relationship of survival with the duration of the surgical procedure

Discussion:

We describe a step by step technique for splenectomy with emphasis on performing a quick and easy surgery by limiting the length of the operation and being familiar with mouse anatomy and some techniques to limit the trauma and therefore the risk of blood loss. This technique minimizes

fluid and blood loss by limiting the time and focusing on avoiding traumatic manipulation. Also, the length of the surgical incision limits the pain experienced and the shorter duration of surgery means that there is less exposure to anesthetic agents, which can also affect the physiologic responses. Many variations exist in the procedure performed, and therefore, the responses measured can be highly variable and inaccurate. When the procedure is performed swiftly, and without trauma, it limits the adverse effects of surgery and anesthesia such that the stress responses from the body are less significant in their effects on inflammation and infection. All these can explain why the relationship of survival with the duration of the surgical procedure (Figure 1). We have worked on two strains (BalbC and C57BL/6), and both strains worked. We did not work on male mice, and we found ideally, the ages of the mice are eight weeks. The tips and tricks and critical steps include: (1) the incision location is above the spleen, (2) precision cut (minimum incision opening in size sufficient to pull out the spleen); (3) to avoid hitting blood vessels, (4) seal the blood vessel as soon as possible to avoid loss of the blood, (5) seal the incision as soon as possible to avoid body fluidic loss. Cited literature below supports our observation.

The spleen is one of the largest lymphoid organs in the body. It harbors immune cells, including antigen presenting cells, B and T lymphocytes. Many studies have demonstrated the importance of the spleen in mounting a cellular and humoral immune response. Splenectomized Balb/C mice have reduced expression of IL-4 and IL-10, making them more susceptible to infection (Maioli *et al.*, 2007). Humans have been recognized to be susceptible to certain gram-negative organisms when splenectomized. They are at risk of overwhelming post-splenectomy infection (OPSI) since King and Schumacker landmark reported in 1952. Loss of the spleen leads to reduced abilities to mount an adequate humoral response to certain bacteria and antigens due to loss of specific subsets of B lymphocytes (including plasma B cells, memory B cells, and follicular B cells) but also potential reduction in cell-mediated immunity given there are specific Helper T cells (TH1 and TH2) that shuttle around serving in surveillance and possess splenic homing receptors. T cells include cytotoxic T cells, memory T cells, helper T cells, natural killer T cells, suppressor T cells, and gamma delta T cells, natural killer cells, and progenitor lymphopoietic stem cells. Also, the actual physical structure of the spleen allowing large volumes of blood to enter within sinusoids that expose the resident cells to monitor and respond to potential antigens.

Splenocytes and specific fractions may have utility for immunotherapy (Li and Kabeer, 2013) in cancer and its responses within the tumor microenvironment (Li and Kabeer, 2018). Autologous splenic lymphocytes may be harvested for reperfusion to preserve specific memory T cell responses against cancer, especially when combined with cancer genome diagnostics (Li *et al.*, 2014). The long-term outcomes of optimal laparoscopic splenectomy for immune thrombocytopenia reached curative in 68% of a cohort study of 109 patients as it is related to relapse-free rates, and predictors of long-term response (Tastaldi *et al.*, 2019). Minimally invasive surgery improves splenic vessel preservation for reducing surgical complications, which was documented in fifteen relevant cohorts with 769 patients (Nakata *et al.*, 2018). Pathologic enlargement (splenomegaly) results in an expansion of cellular proliferation outside of the bone marrow compartment, *i.e.*, extramedullary

hematopoiesis (EMH) (Mo *et al.*, 2009), which is not yet fully understood. T- and B-cell recruitment into the restoration of the central (thymus) and peripheral (spleen and lymph node) is required. As T cell compartments are necessary for optimal adaptive immune responses to pathogens and tumor antigens, a comprehensive assessment of immune responses to splenectomy needs to be elucidated in achieving global immunization against cancer (Li *et al.*, 2018) and infection. In particular, a recent study shows that “a novel antigen delivery platform for cancer vaccines that delivers an encapsulated Ag to splenic marginal zone B (MZ-B) cells via the aid of a PEGylated liposome (PL) system shows promise as a therapeutic modality for conquering tumor growth and/or progression” (Shimizu *et al.*, 2018). Such antigen delivery platform for cancer vaccines relies on the quality of control surgery on the spleen. Furthermore, autologous splenic lymphocyte isolation for preserving an individual’s humoral responses to gram-negative bacteria and potentially have a much more robust response to vaccination in patients who have been splenectomized may be of significant benefit to patients.

Taken together, we wanted to emphasize that a precision procedure for splenectomy is essential in spleen related studies. We noted that a previously published procedure (Reeves *et al.*, 2001) differs from our procedure. Specifically, (1) They made skin incision, ~2.5 cm long, midway between the last rib and the hip joint, while we made only 0.5 cm incision in vertical midline abdomen just below the xyphoid process with fine scissors. (2) They did not seal the blood vessels, which bleeding along with the procedure for up to 60 min of recovery. Note that we used the cautery pen to seal the blood vessel and connective tissue to avoid the ever-lasting wound—natural healing takes much longer time, which needs only 5 min for mice to recovery. (3) Their two stitches for 2.5 cm incision (i.e., subject to infection) were compared with our five stitches for 0.5 cm incision. (4) Their survival rate of 95% following adult splenectomy was in contrast, to our surgeon gained a 100% survival rate.

Conclusions:

This precision technique for splenectomy limits mouse stress responses for accurate and realistic measurements for investigating inflammation and immunity.

Acknowledgments

Author Contributions: SCL and MHK conceived of the study and drafted the manuscript, and all other authors participated in its experimentation of the manuscript. All authors read and approved the final manuscript.

We thank Brent A. Dethlefs and Maria Minon, MD, for their enthusiasm and support.

DISCLOSURES: Funding sources: This work was supported in part by the National Institutes of Health (NCI, R01CA164509; NIEHS, R01ES021801-04S1), by CHOC Children’s Foundation, CHOC-UCI Joint Research Awards (2014, 2015, 2016), and by CHOC Children’s Physician’s Research Pilot grant.

Competing interests

The authors declare that they have no conflicts of competing interest.

Ethics

All protocols were approved by the specific ethics committee (IACUC) that approved the described experiment. IACUC #160501 was the approval ID of the animal experiment in this protocol and the validity period was from June 01, 2016 to March 25, 2019.

References

1. Costi, R., Castro Ruiz, C., Romboli, A., Wind, P., Violi, V. and Zarzavadjian Le Bian, A. (2018). [Partial splenectomy: Who, when and how. A systematic review of the 2130 published cases.](#) *J Pediatr Surg.*
2. Kim, H. S., Park, J. S. and Yoon, D. S. (2019). [True learning curve of laparoscopic spleen-preserving distal pancreatectomy with splenic vessel preservation.](#) *Surg Endosc* 33(1): 88-93.
3. Li, S. C. and Kabeer, M. H. (2013) [Designer immunotherapy specific for cancer.](#) *J Cell Sci Ther* 4(1): e116.
4. Li, S. C. and Kabeer, M. H. (2018). [Spatiotemporal switching signals for cancer stem cell activation in pediatric origins of adulthood cancer: Towards a watch-and-wait lifetime strategy for cancer treatment.](#) *World J Stem Cells* 10(2): 15-22.
5. Li, S. C., Stucky, A., Chen, X., Kabeer, M. H., Loudon, W. G., Plant, A. S., Torno, L., Nangia, C. S., Cai, J., Zhang, G. and Zhong, J. F. (2018). [Single-cell transcriptomes reveal the mechanism for a breast cancer prognostic gene panel.](#) *Oncotarget* 9(70): 33290-33301.
6. Li, S. C., Tachiki, L. M., Kabeer, M. H., Dethlefs, B. A., Anthony, M. J. and Loudon, W. G. (2014). [Cancer genomic research at the crossroads: realizing the changing genetic landscape as intratumoral spatial and temporal heterogeneity becomes a confounding factor.](#) *Cancer Cell Int* 14(1): 115.
7. Maioli, T. U., Carneiro, C. M., Assis, F. A. and Faria, A. M. (2007). [Splenectomy does not interfere with immune response to Leishmania major infection in mice.](#) *Cell Immunol* 249(1): 1-7.
8. Merheb, R., Abdel-Massih, R. M. and Karam, M. C. (2019). [Immunomodulatory effect of natural and modified Citrus pectin on cytokine levels in the spleen of BALB/c mice.](#) *Int J Biol Macromol* 121: 1-5.
9. Mo, J. R., Mathur, A., Angagaw, M., Zhao, S., Wang, Y., Gargano, D., DiBacco, A. and Bachman, E. S. (2009). [Splenectomy normalizes hematocrit in murine polycythemia vera.](#) *PLoS One* 4(9): e7286.

10. Nakata, K., Shikata, S., Ohtsuka, T., Ukai, T., Miyasaka, Y., Mori, Y., Velasquez, V., Gotoh, Y., Ban, D., Nakamura, Y., Nagakawa, Y., Tanabe, M., Sahara, Y., Takaori, K., Honda, G., Misawa, T., Kawai, M., Yamaue, H., Morikawa, T., Kuroki, T., Mou, Y., Lee, W. J., Shrikhande, S. V., Tang, C. N., Conrad, C., Han, H. S., Chinnusamy, P., Asbun, H. J., Kooby, D. A., Wakabayashi, G., Takada, T., Yamamoto, M. and Nakamura, M. (2018). [Minimally invasive preservation versus splenectomy during distal pancreatectomy: a systematic review and meta-analysis.](#) *J Hepatobiliary Pancreat Sci* 25(11): 476-488.
11. Reeves, J. P., Reeves, P. A. and Chin, L. T. (2001). [Survival surgery: removal of the spleen or thymus.](#) *Curr Protoc Immunol* Chapter 1: Unit 1.10. doi: 10.1002/0471142735.im0110s02.
12. Serra, F., Sorrentino, L., Cabry, F., Biondini, D., Ceccarelli, P. L., Campanelli, M. and Gelmini, R. (2018). [First case of laparoscopic partial splenectomy in a child with hamartoma: Case report and review of the literature.](#) *Int J Surg Case Rep* 53: 140-143.
13. Shimizu, T., Abu Lila, A. S., Kawaguchi, Y., Shimazaki, Y., Watanabe, Y., Mima, Y., Hashimoto, Y., Okuhira, K., Storm, G., Ishima, Y. and Ishida, T. (2018). [A novel platform for cancer Vaccines: antigen-selective delivery to splenic marginal zone B cells via repeated injections of PEGylated liposomes.](#) *J Immunol* 201(10): 2969-2976.
14. Szendroi, T., Miko, I., Hajdu, Z., Acs, G., Kathy, S., Furka, I. and Szabo, L. (1997). [Splenic autotransplantation after abdominal trauma in childhood. Clinical and experimental data.](#) *Acta Chir Hung* 36(1-4): 349-351.
15. Tastaldi, L., Krpata, D. M., Prabhu, A. S., Petro, C. C., Haskins, I. N., Perez, A. J., Alkhatib, H., Colturato, I., Tu, C., Lichtin, A., Rosen, M. J. and Rosenblatt, S. (2019). [Laparoscopic splenectomy for immune thrombocytopenia \(ITP\): long-term outcomes of a modern cohort.](#) *Surg Endosc* 33(2): 475-485.