

**UCLA**  
**Contemporary Music Score Collection**

**Title**

Just A Glimpse Of

**Permalink**

<https://escholarship.org/uc/item/5gg4g901>

**Author**

Caulkins, Anthony

**Publication Date**

2020

**Anthony Caulkins**

# **Just A Glimpse Of**

*for double bass and guitar*

## Performance Notes:

### General Notes

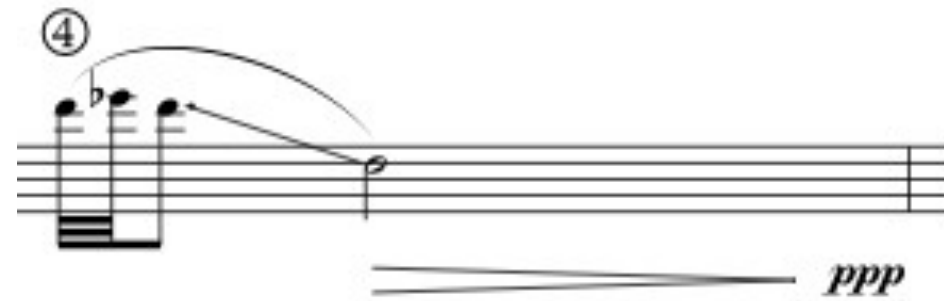
- This piece is based on a single mode – (F, Gb, A, B, C#, D Eb, F).
- For ease of reading, it would be helpful to learn this mode over the range of your instrument.
- All accidentals apply only to the note they immediately precede and **do not** carry through the measure.
- All tremoli are unmeasured.
- Dynamics are written with the relative extremes of each instrument in mind. As a guitar is a quieter instrument than the double bass, high dynamics in the double bass and low dynamics in the guitar should be tempered to blend into the ensemble.

### Double Bass Notes

- The entirety of this piece is written to be played with a mute (con sordino) in order to help to mitigate problems of volume difference between the guitar and double bass.
- An 'x' notehead written two ledger lines below the staff indicated a hand slap on the strings.



- Circled numbers above note indicate the string on which they should be played.



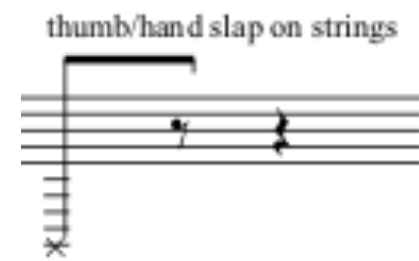
- Artificial harmonics are notated as diamond noteheads above small noteheads, respectively representing the two note positions to be played.



- Natural harmonics are notated as diamond noteheads, in the positions they should be played.



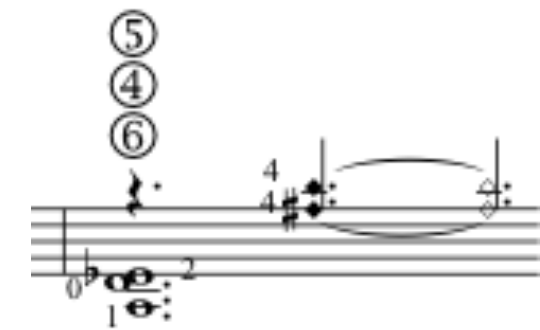
- An 'x' notehead written five ledger lines below the staff indicated a hand slap on the strings.



- Circled numbers above note indicate the string on which they should be played.



- Natural harmonics are notated as diamond noteheads, in the position it should be played.



# Just A Glimpse Of

Anthony Caulkins

for double bass and guitar

Groove; ♩ = c.76

pizz.  
con sord.

Double Bass

*p* hand slap on strings

Guitar

thumb/hand slap on strings

5

D.B.

(slide)

*mf*

*p*

Gtr.

③

II

*p i p i*

*mf*

*p*

9

D.B.

*mf*

*p*

*mf*

③

Gtr.

*p i p i p*

*mf*

*p*

*mf*

*p*

*mf*

13

D.B.

Gtr.

*p* *mf* *p* *mf*

③

II-----

17

D.B.

Gtr.

*p* *mf* *p*

③ ② ③ ② ③ ② ③ ②

21

D.B.

Gtr.

*pp* *ppp*

③

arco  
sul pont.  
(con sord.)

25

D.B.

*pp* *ppp*

*pp* *ppp*

*pp* *ppp*

*pp* *ppp*

Gtr.

*pp*

29

D.B.

*p* *ppp*

*pp*

*pp*

*ppp*

*pppp*

Gtr.

*ppp*

32

Flowing, push tempo; ♩ = c96

D.B.

Gtr.

(a la Villa-Lobos)

*mf* (swelling dynamics ad. lib.)



35

(arco)  
(sul pont.)  
(con sord.)

fall at end of note

*p* *espress.* *mf* *p* *mf* *pp*

D.B.

Gtr.

38

*p* *espress.* *mf*

D.B.

Gtr.

41

norm. sul pont.

*pp* *ppp* *mp* *f*

D.B.

Gtr.

44

D.B.

Gtr.

*mp*

*ppp*

*mf*

②

③ ② ③ ② ③ ② ②

47

D.B.

Gtr.

norm.  
(con sord.)

*mf espress.*

*f*

②  
③

3

*f*

50

D.B.

Gtr.

fall at end of note

*p*

*f*

pizz.  
♩ (bartok pizz.)

arco

*mf espress.*

①  
③  
②  
⑥  
⑥

6fr.

4#  
3

4#

3

3

1

0

53

D.B.

Gtr.

*f*

*p*

*f*

pizz.

fall at end of note

①  
②

56

D.B.

Gtr.

*mp*

*f*

*mp*

*ppp*

arco

①  
②

②  
①  
③  
⑥

59

D.B.

Gtr.

*mf*

*mp*

*p*

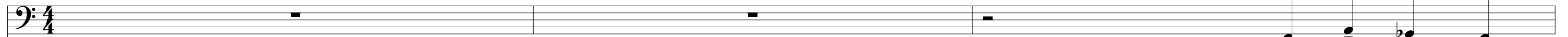
Gradual Rit

⑥ ⑤ ③

Groove; ♩ = c.76

63

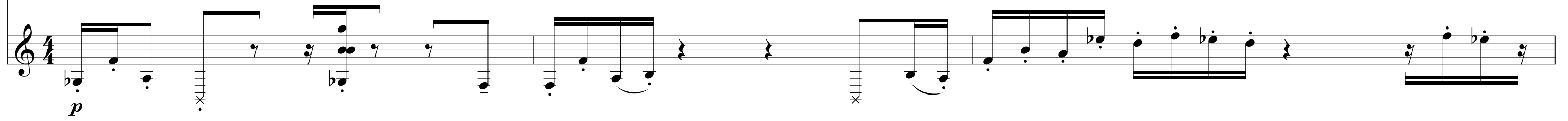
D.B.



Double Bass staff for measures 63-65. The staff is mostly empty, with a few notes appearing in measure 65.

pizz.

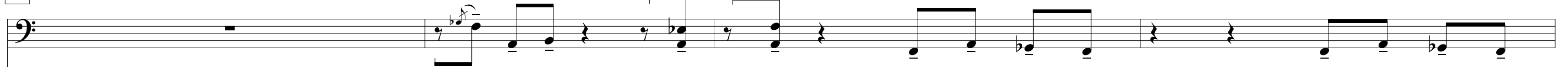
Gtr.



Guitar staff for measures 63-65. It features a complex rhythmic pattern with various chords and melodic lines. Includes a *p* dynamic marking and a *pizz.* marking.

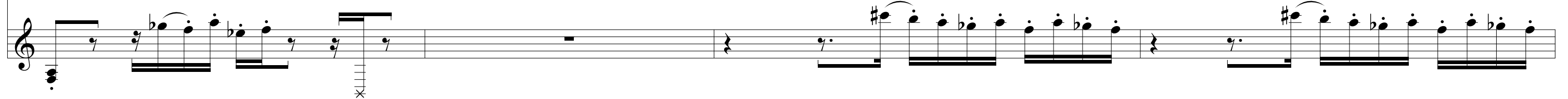
66

D.B.



Double Bass staff for measures 66-69. It contains a melodic line with eighth and quarter notes.

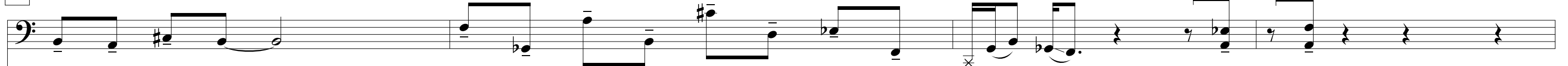
Gtr.



Guitar staff for measures 66-69. It features a melodic line with eighth notes and some chords.

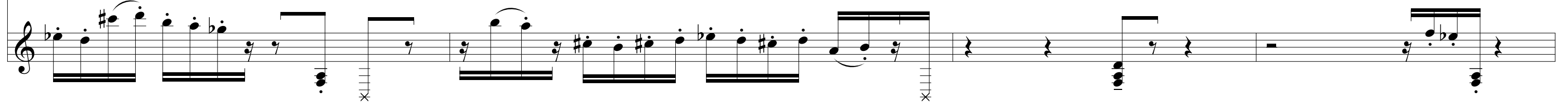
70

D.B.



Double Bass staff for measures 70-73. It contains a melodic line with eighth and quarter notes.

Gtr.



Guitar staff for measures 70-73. It features a melodic line with eighth notes and some chords.

74

D.B.

Gtr.

④  
⑤  
⑥

*mf* *p*

78

D.B.

Gtr.

arco norm.

pizz.

arco

*mf* *p* *mf* *mf*

82

D.B.

Gtr.

pizz.

arco

④  
⑥  
⑤

*mf*

5/4

Slowly - Rubato; ♩ = c 66  
Push and Pull Tempo

86

D.B.

Gtr.

④  
⑥  
⑤

*p* *espress.*

91

D.B.

Gtr.

(arco)  
sul pont.

④

*pp*

*mp* *espress.*

*p i m p i m*

*pp*

96

D.B.

Gtr.

(sul pont.)

*mf* *espress.*

⑥⑤④

⑥

*mf*

Rit ..... A Tempo

98

D.B.

Gtr.

pp

mf

mf

101

D.B.

Gtr.

sul pont.

pp

pp

104

D.B.

Gtr.

f

f

norm.

106

D.B.

Gtr.

sul pont.

norm.

*mp*

*ff*

Detailed description: This system covers measures 106 to 111. The Double Bass (D.B.) part starts with a melodic line in 6/8 time, marked *mp*, and then changes to 12/8 time, marked *ff*. A 'sul pont.' instruction is placed above the D.B. staff. The Guitar (Gtr.) part consists of continuous triplets in 6/8 and 12/8 time, also marked *mp* and *ff*. Fingerings are indicated with circled numbers 3, 4, 5, and 6.

109

D.B.

Gtr.

Detailed description: This system covers measures 109 to 111. The D.B. part features a rhythmic pattern of eighth notes with fingerings 3, 4, 3, 4, 3, 4, 3, 4. The Gtr. part continues with triplets in 6/8 and 12/8 time, marked *mp* and *ff*. Fingerings 3, 4, 5, and 6 are shown.

112

D.B.

Gtr.

Rit

sul pont.

*pp*

*mp*

Detailed description: This system covers measures 112 to 115. A 'Rit' (ritardando) instruction is placed above the D.B. staff. The D.B. part features a melodic line in 6/8 and 12/8 time, marked *pp*. A 'sul pont.' instruction is placed above the D.B. staff. The Gtr. part features triplets in 6/8 and 12/8 time, marked *mp*. Fingerings 3 and 4 are shown.



A Tempo

115

(sul pont.)

fall at end of note

pp

V

Gtr.

pp

119

pizz.

p

Gtr.

p

pp

p

123

arco sul pont.

pp

ppp

Gtr.

pp

p

6fr.

6fr.

Groove (more slowly); ♩ = c.70

127

pizz.

D.B.

*mf*

Gtr.

*mf*

*f*

*mf*

strum

131

arco norm.

D.B.

*f*

*mf*

Gtr.

*f*

*f*

*mf*

*f*

strum

strum

135

arco

pizz.

D.B.

*f*

*mf*

Gtr.

*f*

*mf*

*f*

strum

strum

138 arco

D.B.

*f*

Gtr.

*mf* *f* *mf* *f*

strum

strum

141

D.B.

Gtr.

6fr.

144

D.B.

*ff*

Gtr.

6fr.

*ff*

148

D.B.

Double Bass staff for measures 148-150. Measure 148 features a whole note chord with a sharp sign. Measure 149 has a quarter rest. Measure 150 has a quarter note chord.

Gtr.

Guitar staff for measures 148-150. Measure 148 has a whole note chord with a sharp sign. Measure 149 has a quarter rest. Measure 150 has a quarter note chord. A guitar chord diagram is shown above measure 149.

151

D.B.

Double Bass staff for measures 151-153. Measure 151 has a quarter note chord. Measure 152 has a quarter note chord. Measure 153 has a quarter note chord.

Gtr.

Guitar staff for measures 151-153. Measure 151 has a quarter note chord. Measure 152 has a quarter note chord. Measure 153 has a quarter note chord. A guitar chord diagram labeled "6fr." is shown above measure 153.

154

D.B.

Double Bass staff for measures 154-156. Measure 154 has a quarter note chord. Measure 155 has a quarter note chord. Measure 156 has a quarter note chord.

Gtr.

Guitar staff for measures 154-156. Measure 154 has a quarter note chord. Measure 155 has a quarter note chord. Measure 156 has a quarter note chord. A guitar chord diagram labeled "6fr." is shown above measure 156.

157

D.B.

*fff*

Gtr.

*ff*

160

D.B.

*mf*

*pp*

Gtr.

*mf*

*p*

*pp*