

# UC Davis

## UC Davis Previously Published Works

### Title

Sequencing 4.3 million mutations in wheat promoters to understand and modify gene expression.

### Permalink

<https://escholarship.org/uc/item/5gr5t1b5>

### Journal

Proceedings of the National Academy of Sciences of USA, 120(38)

### Authors

Xiong, Hongchun  
Burguener, Germán  
Vasquez-Gross, Hans  
[et al.](#)

### Publication Date

2023-09-19

### DOI

10.1073/pnas.2306494120

Peer reviewed



# Sequencing 4.3 million mutations in wheat promoters to understand and modify gene expression

Junli Zhang<sup>a,1</sup>, Hongchun Xiong<sup>a,b,1</sup>, Germán F. Burguener<sup>a,c</sup>, Hans Vasquez-Gross<sup>a,d</sup>, Qiujiu Liu<sup>a,c</sup> , Juan M. Debernardi<sup>a,c</sup>, Alina Akhunova<sup>e</sup>, Kimberly Garland-Campbell<sup>f</sup>, Shahryar F. Kianian<sup>g</sup>, Gina Brown-Guedira<sup>h</sup>, Curtis Pozniak<sup>i</sup> , Justin D. Faris<sup>j</sup>, Eduard Akhunov<sup>e</sup>, and Jorge Dubcovsky<sup>a,c,2</sup>

Contributed by Jorge Dubcovsky; received April 24, 2023; accepted August 3, 2023; reviewed by Graham Moore, Thorsten Schnurbusch, and Ben Trevaskis

Wheat is an important contributor to global food security, and further improvements are required to feed a growing human population. Functional genetics and genomics tools can help us to understand the function of different genes and to engineer beneficial changes. In this study, we used a promoter capture assay to sequence 2-kb regions upstream of all high-confidence annotated genes from 1,513 mutagenized plants from the tetraploid wheat variety Kronos. We identified 4.3 million induced mutations with an accuracy of 99.8%, resulting in a mutation density of 41.9 mutations per kb. We also remapped Kronos exome capture reads to Chinese Spring RefSeq v1.1, identified 4.7 million mutations, and predicted their effects on annotated genes. Using these predictions, we identified 59% more nonsynonymous substitutions and 49% more truncation mutations than in the original study. To show the biological value of the promoter dataset, we selected two mutations within the promoter of the *VRN-A1* vernalization gene. Both mutations, located within transcription factor binding sites, significantly altered *VRN-A1* expression, and one reduced the number of spikelets per spike. These publicly available sequenced mutant datasets provide rapid and inexpensive access to induced variation in the promoters and coding regions of most wheat genes. These mutations can be used to understand and modulate gene expression and phenotypes for both basic and commercial applications, where limited governmental regulations can facilitate deployment. These mutant collections, together with gene editing, provide valuable tools to accelerate functional genetic studies in this economically important crop.

wheat | promoter capture | exome capture | functional genomics | *VRN1*

Wheat provides one-fifth of the calories and proteins consumed worldwide (1), and continuous improvements in wheat productivity and nutritional value are required to feed a growing human population. Crop improvement relies on natural or induced variation that alters the function or expression of genes controlling relevant traits. To induce mutations with detectable effects, wheat researchers used ionizing radiation in the late 1920s (2, 3) and expanded into chemical mutagenesis in the 1960s utilizing reagents such as ethyl methane sulfonate (EMS). EMS induces point mutations (G to A and the reciprocal C to T) that are less deleterious than the large deletions and chromosome breaks generated by radiation (4).

In early mutagenesis studies, researchers found that the use of induced mutations in polyploid wheat was not as effective in generating phenotypic changes as in diploid grasses, such as barley or rice. These researchers hypothesized that gene redundancy, resulting from polyploidy likely masks the cause of the phenotypic effects of the mutations (2), a hypothesis that was confirmed in more recent studies (5, 6). Duplicated genes (homeologs) result in reduced selection pressure and in opportunities for subfunctionalization or elimination of duplicated genes. Differences between homeologs are limited in wheat due to the recent origin of the polyploid species. This results in higher levels of functional overlap among duplicated genes and reduced effects of induced mutations than in older polyploid species (6). Tetraploid wheat ( $2n = 28$ , genomes AABB) originated less than 0.8 Mya (7, 8), whereas hexaploid wheat ( $2n = 42$ , genomes AABBDD) originated ~10,000 y ago (9, 10), providing little time for functional differentiation of homeologs.

The extensive functional overlap among homeologs allows the polyploid wheat species to tolerate higher doses of mutagen and more mutations per plant, which reduces the number of mutagenized plants required to saturate the gene space with mutations relative to diploid or old polyploid species (11). This property was used to develop saturated EMS mutagenized populations for both tetraploid and hexaploid wheat (5, 11–13). These populations were initially screened using DNA pools and the endonuclease *Cell*, a technology called TILLING (targeting induced local lesions in genomes) (14). The *Cell* assays

## Significance

Induced mutations in regulatory regions can be used to modulate the spatial or temporal expression of genes, whereas mutations in the coding regions can be used to generate knockouts or allelic variants to study gene function. Given the absence of regulatory limitations, these mutations can be also used in commercial applications. In this study, we sequenced 4.3 million induced mutations in the promoters and 4.7 million in the coding regions of most genes from the tetraploid wheat variety Kronos and deposited them in public databases. We provide examples of how this resource can be used to understand gene function, modulate gene expression, and generate changes in valuable wheat agronomic traits.

Author contributions: J.D. designed research; J.Z., H.X., Q.L., J.M.D., A.A., and E.A. performed research; K.G.-C., S.F.K., G.B.-G., C.P., and J.D.F. contributed new reagents/analytic tools; J.Z., G.F.B., H.V.-G., and J.D. analyzed data; and J.Z. and J.D. wrote the paper.

Reviewers: G.M., John Innes Centre; T.S., Leibniz-Institut für Pflanzengenetik und Kulturpflanzenforschung; and B.T., Commonwealth Scientific and Industrial Research Organisation.

Competing interest statement: Dr. Pozniak and Dr. Trevaskis are co-authors on a 2020 review including 25 co-authors, but did not directly collaborate with each other.

Copyright © 2023 the Author(s). Published by PNAS. This open access article is distributed under [Creative Commons Attribution License 4.0 \(CC BY\)](https://creativecommons.org/licenses/by/4.0/).

<sup>1</sup>J.Z. and H.X. contributed equally to this work.

<sup>2</sup>To whom correspondence may be addressed. Email: [jdubcovsky@ucdavis.edu](mailto:jdubcovsky@ucdavis.edu).

This article contains supporting information online at <https://www.pnas.org/lookup/suppl/doi:10.1073/pnas.2306494120/-/DCSupplemental>.

Published September 13, 2023.

were later replaced by high-throughput sequencing methods that can screen multiple genes simultaneously (15), and more recently by sequencing the coding regions of most wheat genes across the complete mutant population using exome capture (EC) (5). The latter study generated databases of 4.15 million sequenced EMS mutations in the tetraploid wheat cultivar Kronos and 6.42 million mutations in the hexaploid wheat cultivar Cadenza, which can be rapidly screened using web-based Nucleotide Basic Local Alignment Search Tool (BLASTN) searches (5).

These databases have been used to identify loss-of-function mutants in numerous wheat genes affecting heading time (16–21) and spike and grain development (22–31). However, loss-of-function mutations in coding regions can sometimes have negative phenotypic effects, limiting their use in wheat improvement. For these genes, it would be desirable to identify *cis*-regulatory variants affecting the level of expression or the timing or tissues where the gene is expressed, to generate more subtle phenotypic changes and reduced pleiotropic effects (32, 33).

Multiple examples of natural *cis*-regulatory single-nucleotide polymorphisms (SNPs) affecting gene expression and valuable agronomic traits have been reported in plants. A single SNP in the *SH1* promoter affects its expression at the spikelet abscission layer and results in the nonshattering characteristic of domesticated rice (34). In the same species, natural SNPs in the promoters of genes *TGW2* and *GS5* affect gene expression and result in changes in grain size (35, 36). In wheat, a single SNP in the promoter of the *VRN-D1* gene has been associated with differences in heading time (37). In addition to natural variants, induced *cis*-regulatory mutations can be also useful for crop improvement (38). A collection of CRISPR-edited alleles of the *CLV3* promoter in tomato has been shown to provide a continuum of fruit sizes (39), and edited weak promoters of the *CLE* genes in maize have been used to engineer quantitative variation in yield-related traits (40).

In this study, we sequenced the regulatory regions upstream of all the high-confidence annotated wheat genes [CS RefSeq v1.1, (41)] in a population of 1,513 EMS-mutagenized lines of tetraploid wheat variety Kronos, and identified 4.3 million induced mutations (99.8% accuracy). We also remapped the previous Kronos EC reads to the improved RefSeq v1.1 reference genome and predicted the effect of mutations in the annotated genes, significantly expanding the number of identified nonsynonymous and truncation mutations. To show the value of this tool, we selected two mutations in predicted regulatory regions of the *VRN-A1* gene and showed their significant effect on gene expression and number of spikelets per spike.

## Results

**Identification of EMS-Induced Mutations in Promoter Regions of Tetraploid Wheat.** We performed promoter captures (PCs) for 1,535 Kronos EMS mutant lines using a previously published NimbleGen PC for hexaploid wheat (42) and obtained an average of 135.3 M 150 PE reads per line (67.65 M read-pairs or approximately 20 Gb per line, *SI Appendix, Method S1*). After trimming, mapping to the wheat genome (RefSeq v1.1), and eliminating duplicated reads, we ran the MAPS pipeline (5) to identify mutations at four stringency levels (*SI Appendix, Table S1 and Method S2*).

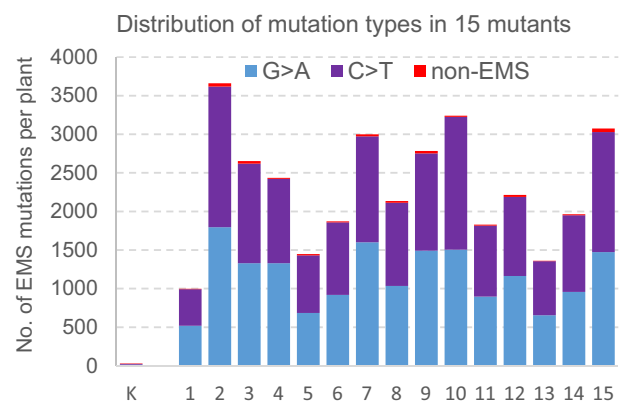
These stringency levels differ by the minimum coverage (MC) required to call a heterozygous (HetMC) or homozygous (HomMC) mutation. At the lowest stringency, HetMC3/HomMC2 (at least 3 reads with the mutation in heterozygous and 2 reads in homozygous lines), we identified 4,657,354 mutations, 96.8% of which were G to A or C to T (henceforth, G>A/C>T or EMS mutations). At the HetMC5/HomMC3 higher

stringency level, the number of called mutations decreased to 3,784,020 and the percent of EMS mutations increased to 99.1% (*SI Appendix, Table S1*), indicating a reduction in the error rate. Fig. 1 shows the number and type of mutations in the promoter regions for 15 randomly selected lines compared with the nonmutagenized Kronos control (at HetMC5/HomMC3).

The percent of non-EMS mutations provides an estimate of the error rate, but it is not its final measure because non-EMS mutations are eliminated from the searchable databases resulting in a smaller error. However, G>A/C>T errors cannot be eliminated because they cannot be distinguished from real EMS mutations. To estimate this source of errors, we used the frequency of the EMS reciprocal transitions A to G or T to C SNPs (henceforth, A>G/T>C or non-EMS transitions), which have a similar frequency to the G>A/C>T SNPs among random mutations (5). The average predicted error rate calculated using this method was 0.15% at HetMC5/HomMC3, which is similar to the estimated errors at the same stringency level in the previously published study (0.18%) (5).

At this stringency level, we observed highly significant ( $P < 0.0001$ ) correlations between the promoter and ECs for the number of mutations ( $R = 0.854$ ) across the 1,492 Kronos mutant lines shared between the two studies (*SI Appendix, Table S2*). Since these mutations were obtained from the same next-generation sequencing libraries, the significant correlation indicates that a large proportion of the variation among lines in number of mutations ( $R^2 = 0.73$ ) is explained by either variation in the number of mutations present in each line (e.g., different exposure or penetration of EMS into seeds) and/or by variation in the quality of the sequencing libraries. The particular effect of the variation in sequencing library quality was more specifically reflected by the smaller, but still highly significant correlation between the two captures for the percentage of EMS ( $R = 0.154$ ) and non-EMS transitions ( $R = 0.183$ , *SI Appendix, Table S2*).

**Determination of an Improved Error Threshold Adjusted by Sequencing Library.** The variability in %-EMS among lines suggested that our previous strategy of using the same error threshold for all the lines was not the best strategy to maximize the number of detected mutations while minimizing the error rate. Therefore, we developed a strategy that adjusts the stringency level used to call mutations based on the quality of the library, estimated by the percent of non-EMS mutations. We found that a %-EMS  $\geq 98\%$  was sufficient to reduce the % of non-EMS transitions below



**Fig. 1.** SNPs detected in the Kronos PC. Mutations were called at HetMC5/HomMC3 for 15 random mutagenized Kronos lines and the nonmutagenized Kronos control (K). Blue and violet bars indicate EMS-type mutations (G>A/C>T) and red bars indicate non-EMS mutations. We identified 29 SNPs in the nonmutagenized Kronos control, which are likely sequencing errors or residual heterogeneity that our bioinformatics pipeline failed to identify and eliminate.

0.7% even in the lowest quality libraries, so we called mutations in each library at the lowest stringency level that resulted in  $\geq 98\%$ -EMS (henceforth EMS98%, *SI Appendix, Method S3*).

A total of 940 among the 1,535 sequenced lines exceeded the EMS98% threshold at the lowest stringency level (HetMC3/HomMC2), yielding 3,166,422 EMS mutations (74% of the total EMS mutations). This result indicated that most of the libraries were of good quality. We selected 834,662 EMS mutations at HetMC4/HomMC3, 205,755 EMS mutations at HetMC5/HomMC3 and 80,522 EMS mutations at HetMC6/HomMC4. Finally, we eliminated 22 libraries that did not reach the EMS98% threshold even at the highest stringency level (HetMC6/HomMC4), resulting in 1,513 lines used in the PC dataset.

By eliminating more SNPs from the low-quality libraries and selecting more from the good quality libraries, we were able to call 561,605 more EMS-type mutations than by using the HetMC5/HomMC3 across all libraries, while maintaining a very low estimated error (0.21%, *SI Appendix, Table S1*). The use of the EMS98% method adjusted by library also reduced the correlation between the promoter and EC studies for percent EMS (from  $R = 0.154$  to  $R = 0.034$ ) and non-EMS transitions (from  $R = 0.183$  to  $R = 0.119$ ), suggesting a reduced effect of the differences in sequencing library quality on the mutation identification process (*SI Appendix, Table S2*).

In summary, using the EMS98% method, we identified 4,287,361 EMS-type promoter mutations from 1,513 libraries (2,834 EMS mutations per line) with an estimated error rate of 0.21% (Table 1). Based on an estimated mapping space of 102,378,005 bp (quality  $\geq 20$ , coverage  $\geq 3$ ), we estimated a mutation density of 41.9 EMS mutations/kb across the complete population, or 23.8 EMS mutations per Mb per individual line (Table 1).

**Table 1. Summary of PC and EC mutations identified using the EMS98% method**

Trait	Promoter	Exome
Number of lines used (overlap 1,465)	1,513	1,521
Total uniquely mapped SNPs	4,345,625	4,748,394
Uniquely mapped EMS-type mutations*	4,287,361	4,690,454
Valid mapping space [quality $\geq 20$ , min. coverage 3, no RH (Residual heterogeneity)]	102,378,005	131,190,164
Avg. EMS-type mutations per kb (population)	41.9	35.8
Avg. EMS-type mutations/line*	2,833.7	3,083.8
% EMS-type*	98.7%	98.8%
% Heterozygous for EMS SNPs (expected 66.66% at $M_2$ )*	64.67%	65.07%
% Heterozygous for non-EMS SNPs	99.99%	99.99%
Non-EMS-type transitions (estimated error)*†	0.21%	0.34%
RH SNPs	40,823	73,239
% RH SNPs	0.93%	1.52%
% Heterozygous in RH	14.7%	26.8%
% EMS-type in RH	16.9%	23.0%
Non-EMS-type transitions in RH	25.4%	29.9%

\*Excluding RH and deletions.

†Estimated from the percent of reciprocal A>G and T>C transitions among total mutations. The comparison between parameters for the PC obtained by methods EMS98% adjusted by library and HetMC5/HomMC3 global adjustment is provided in *SI Appendix, Table S1*.

### Remapping EC to RefSeq v1.1 Using the EMS98% Error Method.

The previous EC data were mapped to a fragmented wheat genome with limited annotation (5). Since there are no conversion tables from previous assemblies to RefSeq v1.0, we decided to remap the reads to the CS RefSeq v1.1 using the EMS98% error threshold, and to reannotate the mutation effects using the gene models in RefSeq v1.1. This involved the remapping of the ECs of 1,535 Kronos lines and running the MAPS pipeline. We called SNPs using the same four stringency levels as in the PC described above, and then used the EMS98% threshold method to select high-confidence mutations.

The use of the EMS98% threshold resulted in the elimination of 14 libraries that showed less than 98%-EMS even at the highest stringency level (HetMC6/HomMC4), but still yielded 537,629 more EMS mutations relative to the previous HetMC5/HomMC3 threshold across all libraries (*SI Appendix, Table S1*). Using the EMS98% threshold, we identified 4,690,454 unique EMS-type mutations from 1,521 libraries with an estimated error rate of 0.34% (Table 1). This represents an average of 3,084 EMS mutations per line, and a mutation density of 36.7 EMS mutations/kb across the complete population (Table 1, EC).

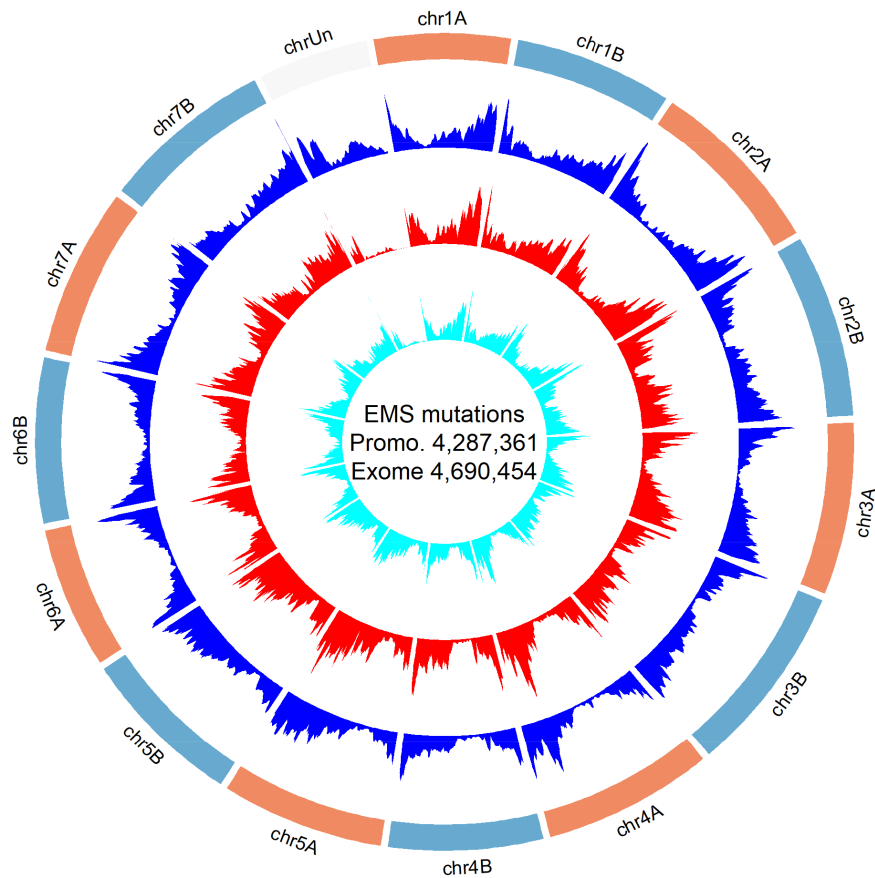
We determined mutation effects using the Variant Effect Predictor (VEP) program (43) (*SI Appendix, Method S4*). VEP was also used to predict Sorting Intolerant from Tolerant scores (44), which predict the potential impact of amino acid substitutions on protein function. The improved effect prediction tools, together with the improved gene models of CS RefSeq v1.1, increased the number of annotated missense variants to 1,637,961 (59% increase) and of truncation mutations to 113,880 (49% increase) relative to the previously published study (5) (*SI Appendix, Table S3*). As a result of the additional annotated effects, the number of gene models with at least one missense mutation increased 22.9%, and the number of genes with predicted truncations (premature stop codons plus splice site mutations) increased by 34.9%, relative to previous results (5) (*SI Appendix, Table S3*).

Some of the mapped reads in the EC extend upstream of the start codon, so we expected some overlap between the mutations detected in the PC and EC studies. We used this overlap to confirm the correct identity of the lines in both captures. We identified 174,677 mutations in 1,465 lines shared between the PC and EC (*SI Appendix, Table S4*), confirming the correct tracking of the sequencing libraries and file identification numbers in the two experiments, and the quality of the called mutations.

### Distribution of EMS Mutations across and along the Wheat Chromosomes.

The number of EMS mutations per chromosome was highly correlated with the number of annotated genes for both the EC ( $R = 0.942$ ) and PC ( $R = 0.926$ , *SI Appendix, Table S5*). These results indicate that the probes captured mainly the gene regions as intended, and that the differences in the number of SNPs across chromosomes were mainly driven by their differences in gene content.

The EMS mutation density is relatively uniform, so the average number of detected mutations per kilobase is directly correlated with the length of DNA captured for a particular region. Since the PC and ECs are focused on genes, and wheat genes are more abundant in the distal regions of the chromosomes, we expected more mutations in those regions. To visualize the distribution of EMS mutations within chromosomes, we generated a circle graph including both the promoter and remapped EC data (Fig. 2). This graph showed that the EMS mutations in both studies are, as expected, more abundant toward the distal regions of the chromosomes, reflecting the higher gene density in the distal regions of the wheat chromosomes (45).



**Fig. 2.** Genome-wide positions of identified mutations in the promoter and EC. The blue track indicates gene density (high confidence gene from RefSeq v1.1 annotation), the red track indicates EMS mutation density in the PC, and the cyan track indicates the EMS mutation density in the reanalyzed EC.

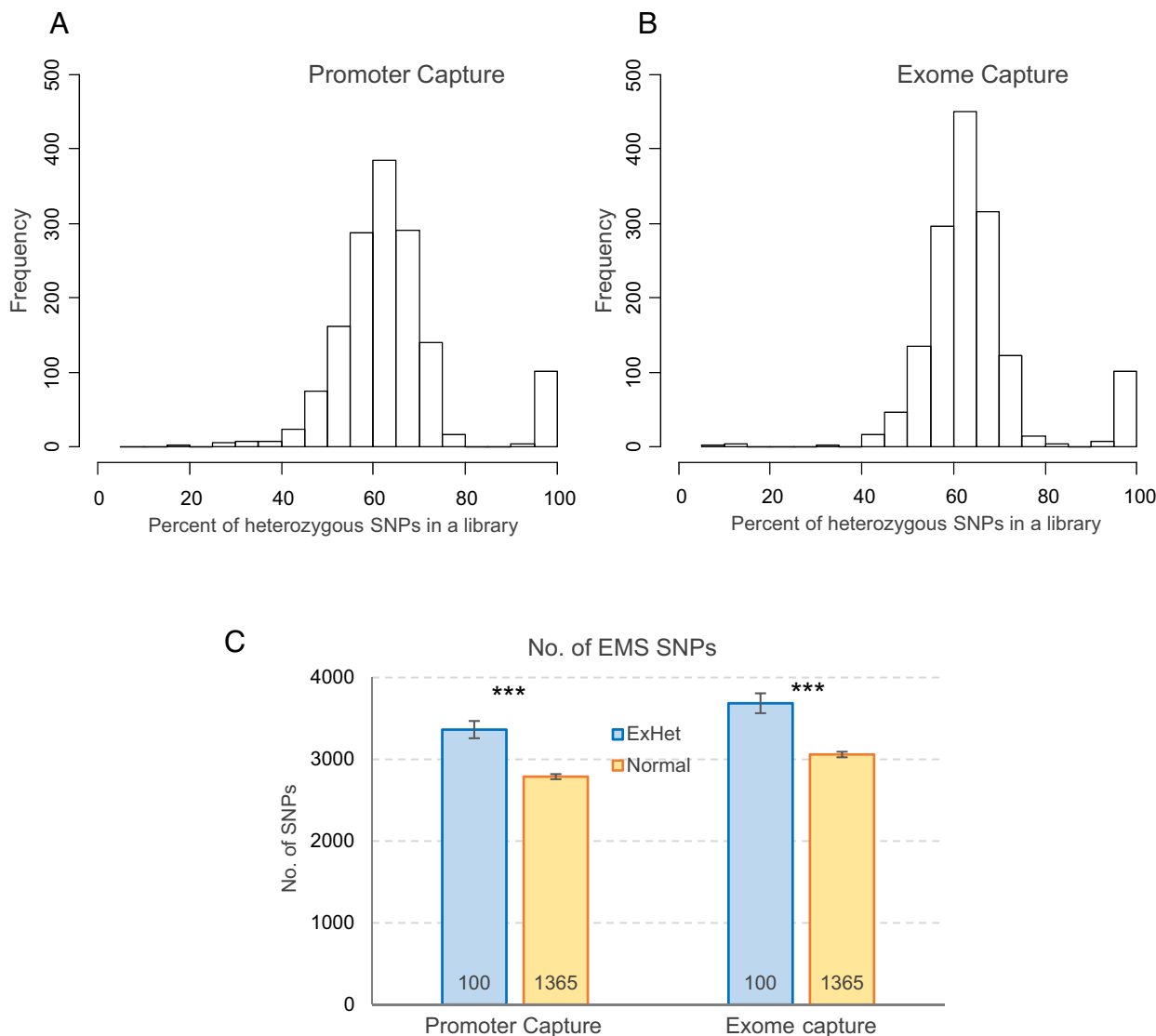
**RH Regions.** The previous Kronos EC revealed that 1.64% of the detected SNPs were not induced by EMS mutagenesis but were instead originated from RH present in the mutagenized Kronos seed (5). We identified these regions by their higher proportion of linked non-EMS mutations, higher SNP density, higher proportion of homozygous SNPs, and by the presence of the same SNPs in multiple individuals. We combined those four criteria in one index and used a bioinformatics pipeline developed in a previous study (5) to identify and eliminate mutations in the predicted RH regions. This filter resulted in the elimination of 40,823 SNPs in the PC (0.93%) and 73,239 SNPs in the EC (1.52%, Table 1). These percentages of RH are consistent with pooled seeds from different plants after six generations of self-pollination, a common practice in wheat breeding.

**Percent of Heterozygous SNPs.** We collected the DNAs used in this study from  $M_2$  plants, so we expected 1/4 of the plants to be homozygous for the wild-type allele, 1/4 homozygous for the mutant allele, and 1/2 heterozygous. Since we can only identify the mutant alleles, we expect 2/3 of the identified mutations to be heterozygous (66.7%). However, we initially observed 68.1% heterozygous EMS mutations in the PC and 68.2% in the reanalyzed EC. This excess heterozygosity is likely caused by the low threshold used by the MAPS program to classify mutations as heterozygous (5). Even when a single wild-type read is mapped to a mutation site, MAPS calls that mutation heterozygous even if it is at a very low frequency relative to the reads showing the mutation. This can happen, for example, when a read from a closely related homeolog is erroneously mapped to the region carrying the mutation and is not eliminated by the MAPS pipeline.

To correct these errors, we used a heterozygous filter pipeline developed in the initial EC project (5). This filter reclassifies heterozygous mutations as homozygous when the frequency of the wild-type allele is less than 15% of the reads (5). After we applied this filter, the average percentage of heterozygous EMS mutations (%-het) was reduced to 64.7% for the PC mutations and to 65.1% for the EC mutations.

Unexpectedly, 100 lines showed an average proportion of heterozygous mutation (>90%) in both the PC and ECs that was much higher than expected for  $M_2$  plants (66%, Fig. 3A and B). These 100 lines showed similar average % EMS (98.4 to 98.7%) as the other 1,365 shared lines (98.6 to 98.7%), but they had on average 17% more mutations than the rest of the lines both in the PC and ECs ( $P < 0.0001$ , Fig. 3C). We hypothesize that the  $M_2$  plants with >90% heterozygous mutations originated by hybridization between two mutant  $M_1$  gametes. The maximum proportion of shared mutations between each of the 100 lines with >90% heterozygous and any of the other 1,365 lines was 0.51% indicating that none of the 100 lines originated from crosses with any of the other sequenced Kronos mutant lines (which will be expected to share ~50% of the mutations). Therefore, we hypothesize that hybridization occurred between gametes from chimeric mutant tillers from the same  $M_1$  plant or between mutant plants not included in our subset of sequenced lines. The percent cross-pollination in wheat is usually small (46), but the increased sterility of the mutant lines likely increased this probability.

**EMS “preferred” G Residues and Level of Mutagenesis Saturation.** We analyzed the 10 bp flanking the mutated G sites in the PC to determine if there was a preferred sequence context for the



**Fig. 3.** Characterization of lines with higher-than-expected levels of heterozygous EMS mutations. Distribution of the proportion of heterozygous mutations per line in (A) promoter and (B) EC populations. (C) Comparison of the average number of SNPs between 100 lines with >90% heterozygous mutations (ExHet, excess heterozygous) and 1,365 lines with  $\leq 90\%$  heterozygous among the 1,465 lines shared between the PC and EC datasets. *P* values are from two-sided Kruskal-Wallis tests and error bars are SEM. \*\*\**p* < 0.001.

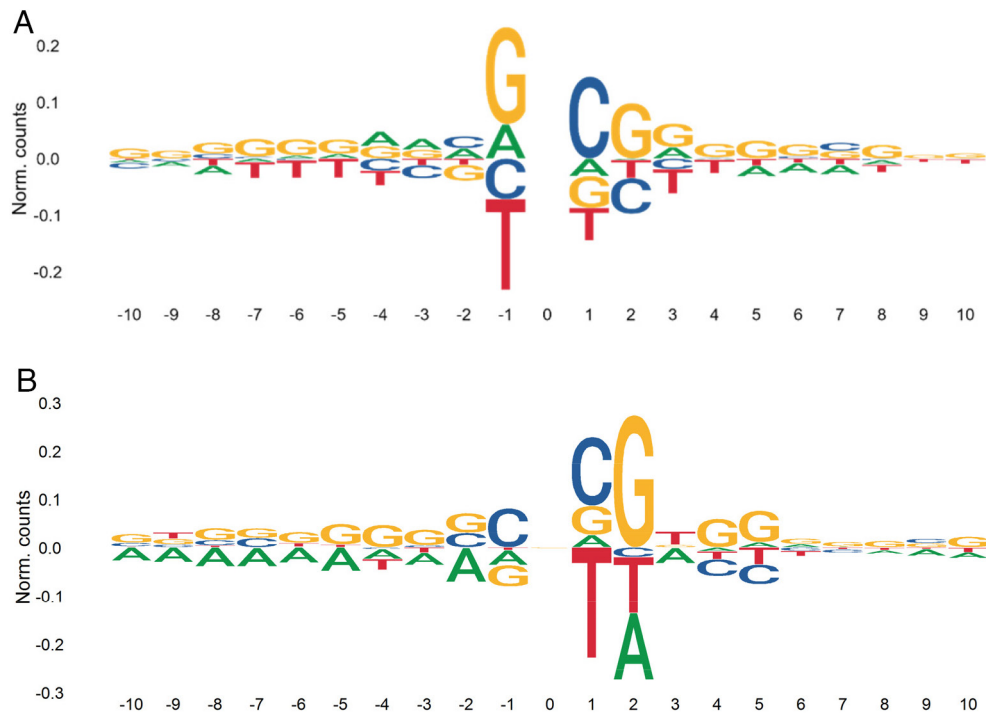
mutations. We found a relatively high frequency of C bases at position +1 downstream of the mutated G, and of G at position -1 and +2 relative to the mutated G; whereas a negative bias for T was observed at position -1 (Fig. 4A). These preferences are similar to those reported in the previous EC study (5), and indicate that not all the G bases in the genome have a similar probability of being mutated by EMS.

Although this variation is likely continuous, we artificially divided them into two hypothetical populations of EMS-accessible and EMS-inaccessible GC bases to simulate a Poisson distribution and estimate the average proportion of accessible GC positions. We wanted to use this value to calculate the percent of the EMS-accessible GC positions for which we already have mutations in our population, a parameter we will refer hereafter as the percent saturation. This parameter is useful to decide if it is worth sequencing additional wheat mutant lines treated with EMS or if it is better to switch to a different mutagen that can access different sequences in the genome. As the percent saturation increases, additional sequencing results in diminishing returns because the

proportion of mutations found in more than one line (henceforth, duplicated mutations) increases.

Among the large number of mutations identified in this study, we found 291,577 EMS mutations in the PC and 281,686 in the EC that were present in two lines. Those numbers decayed rapidly for mutation shared by three (PC = 31,539 and EC = 25,214) or four (PC = 4,503 and EC = 3,228) lines (SI Appendix, Table S6), following an approximate Poisson distribution. To estimate the proportion of EMS accessible GCs, we first tested different means ( $\lambda$  = average mutations per site across the population) to identify the Poisson distribution that better fit the observed data. We found that  $\lambda = 0.182$  and  $\lambda = 0.153$  minimized the differences between observed and expected values for the PC and EC, respectively (SI Appendix, Table S6 and Method S5).

Using  $\lambda = 0.182$ , we estimated the existence of 23,556,929 “accessible” GC sites among the 47.9 M predicted GC in the total mapping space of the PC (102.4 Mb, GC content of 46.8%). Using a similar procedure, we estimated that, on average, 50.7% of the GC sites in the EC space were accessible to EMS (SI Appendix, Table S6).



**Fig. 4.** Sequence context of G>A EMS mutations and C>A errors. (A) Sequence preference in regions flanking EMS-type G>A calculated based on all EMS mutations (B) C>A sequence context was calculated based on the 60 sequencing libraries in both captures with the highest %C>A/G>T. The x axis indicates the number of nucleotides upstream (negative) and downstream (positive) from the mutated site.

The lower estimate for this parameter presented in our previous EC paper (5) was due to a calculation error, and a correction to that paper has been published (47), showing similar values to those presented here. In summary, these estimations suggest that approximately half of the GC sites in the sequenced space were accessible to the EMS treatment performed in this study.

We then used the estimated EMS-accessible GC to calculate the %saturation values (mutated sites/accessible GC sites). Only 14.2% of the EMS-accessible GC in the EC and 16.6% in the PC are covered by EMS mutations in at least one of the sequenced lines in the mutant population. The larger value observed in the PC reflects the higher mutation density in the PC (41.9 mutations/kb) than in the EC (37.7 mutations per/kb). The percent-saturation values estimate the probability that a new mutation will be the same as a previously identified one, a probability that can be also estimated by dividing the number of duplicated mutations by the total number of EMS mutations. These two independent estimates are almost identical validating the Poisson simulation (*SI Appendix, Table S6*).

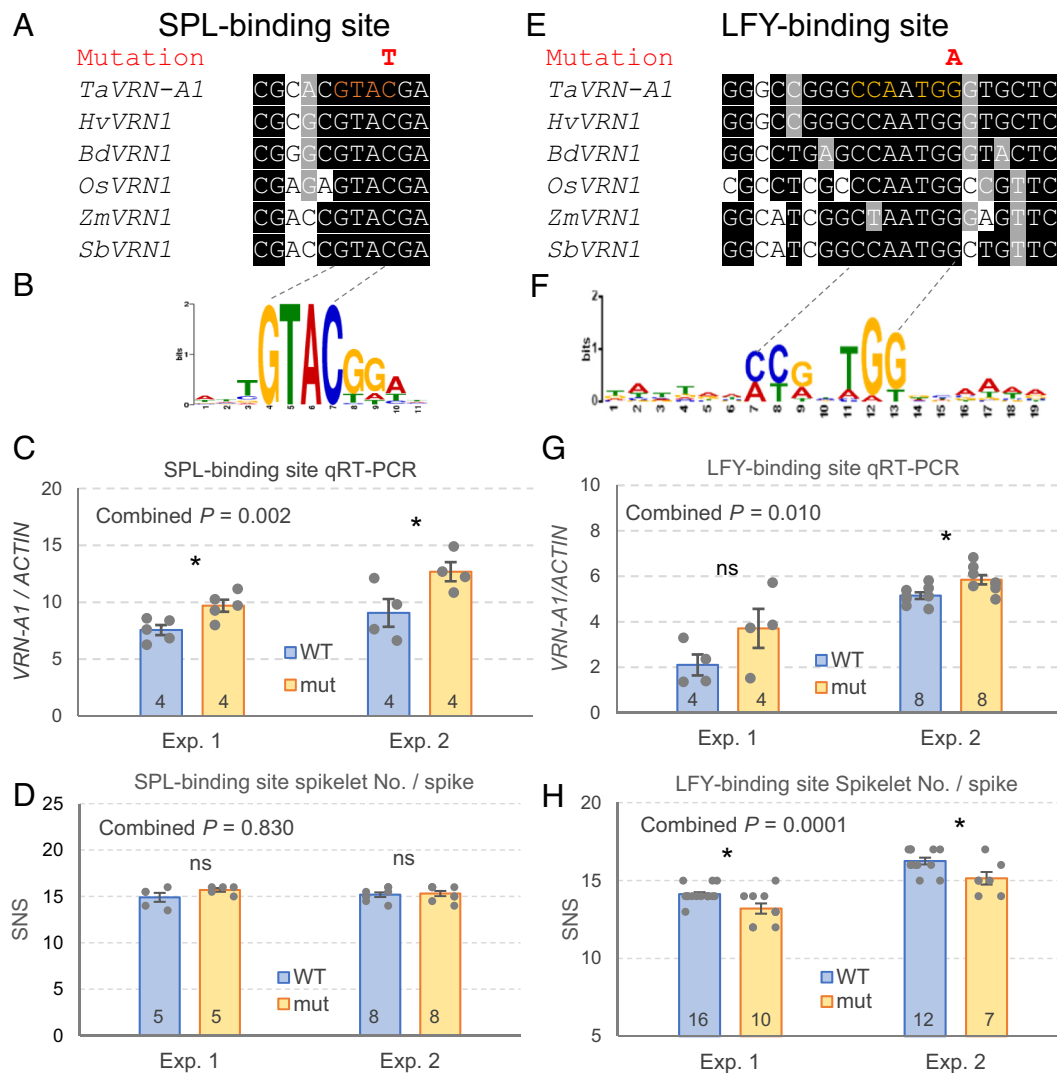
**Functional Characterization of Selected Mutations.** To show the value of the sequenced promoter mutations, we explored the 2 kb upstream of the vernalization gene *VRN1*, which is a central regulator of heading time (48–50) and spike development (24) in wheat. We first delimited conserved regions in the promoter by aligning *VRN1* orthologs from wheat, barley, rice, maize, sorghum, and *Brachypodium* using T-coffee (<https://tcoffee.org.eu/>). We focused on two conserved regions (Fig. 5 A and E) including predicted binding sites for transcription factors (TFs) SQUAMOSA PROMOTER BINDING PROTEIN LIKE (SPL) and LEAFY (LFY) (Fig. 5 B and F, respectively).

We first selected a C to T mutation in Kronos mutant K4679 located within the predicted SPL core binding site (sequence GTAC) (51). This mutation, located -368 bp upstream from the *VRN-1* start codon, changes the core binding motif GTAC to GTAT in a position that is well conserved across grass species (Fig. 5A). Since

SPL proteins are known to affect panicle development in rice (52–54), we explored the effect of the selected mutation on the expression of *VRN-1* in young developing spikes (5 mm long) dissected from tetraploid wheat Kronos plants. The expression of *VRN-1* in the mutant line across two experiments was on average 33.6% higher than in the wild-type sister line ( $P = 0.002$ , Fig. 5 C and *SI Appendix, Table S7*), confirming that this mutation affects *VRN-1* expression. However, we did not detect significant differences in spikelet number per spike (SNS, Fig. 5D) or heading time (*SI Appendix, Table S8*) in this particular mutant line.

We also found a mutation in Kronos mutant K2944 within a predicted LFY-binding site (55) located between positions -285 and -281 upstream from the *VRN-1* start codon. This mutation resulted in a change from the conserved CC(A/G)n(T/A)GG binding site (55) to CC(A/G)n(T/A)GA, in a position that was conserved across the analyzed grass species (Fig. 5 E and F). We then studied *VRN-1* transcript levels at the early stages of spike development (lemma primordium present, Waddington scale W3.25, ~2 mm long) by qRT-PCR in two independent experiments (Fig. 5G and *SI Appendix, Table S9*). The differences in expression were significant only in the second experiment with a larger number of replications (Fig. 5G), but the trend was the same in both experiments resulting in a significant difference in the combined ANOVA using experiments as blocks ( $P = 0.010$ , *SI Appendix, Table S9*). On average, we observed a 27% higher *VRN-1* expression in the line with the mutation in the LFY-binding site than in the wild type. This change was associated with an average reduction of 6.6% in the number of spikelets per spike relative to the sister lines with the wild-type allele ( $P = 0.0001$ , Fig. 5H and *SI Appendix, Table S10*). No significant differences were observed for heading time and leaf number (*SI Appendix, Table S10*).

In summary, these examples suggest that the catalogue of sequenced promoter mutations developed in this study will be useful for the identification of regulatory variants to manipulate the levels of gene expression and to fine tune phenotypic changes in wheat.



**Fig. 5.** Effect of promoter mutations on *VRN-A1* expression and spikelet number per spike (SNS). (A–D) Mutation in a conserved putative SPL-binding site. (E–H) Mutation in a conserved putative LFY-binding site. (A and E) Conserved regions in the *VRN1* promoter in wheat (*Ta*), barley (*Hv*), *Brachypodium distachyon* (*Bd*), rice (*Os*), maize (*Zm*), and sorghum (*Sb*). (B and F) Sequence preference logo for SPL and LFY TFs. (C and G) Effect of mutations in *VRN-A1* expression. (D and H) Effect of mutations on the SNS. ns = not significant, \* $P < 0.05$ , \*\* $P < 0.01$ , \*\*\* $P < 0.001$ . Numbers at the Bottom of the bars indicate the number of biological replicates (gray dots) and error bars are SEM. ANOVAs combining the two experiments are available in *SI Appendix, Tables S7–S10*, and the combined  $P$  value for genotype is indicated in the Top Left corner of each graph.

## Discussion

The large and repetitive nature of the polyploid wheat genomes delayed the initial genome sequencing efforts relative to other diploid crop species with smaller genomes. However, since the release of the first hexaploid wheat reference genome (41), multiple complete wheat genomes have been sequenced (56), exome sequencing data have been completed for ~1,000 wheat accessions (57), and expression data have been generated from multiple tissues and germplasm (58, 59). These public genomics resources, together with more efficient wheat transformation technologies (60, 61), have significantly expanded the opportunities for wheat research and improvement to more groups around the world. In this study, we report the development of a public database of 4.3 million sequenced mutations in the promoters of most genes in durum wheat, and the expansion and improved annotation of the sequenced mutations in the coding gene region from the same species.

### Expanded EC Mutant Dataset with Improved Annotations.

The first EC sequenced mutant populations were developed for tetraploid cv. Kronos (1,535 lines) and hexaploid cv. Cadenza

(1,200 lines) in 2017 (5), before the release of the first wheat genome reference CS RefSeq v1.0 (41). In those studies, reads were aligned to fragmented scaffolds assembled using Illumina short reads generated from flow-sorted chromosome arms [Chromosome Survey Sequencing (CSS)] (62). In spite of these initial limitations, the two mutant wheat collections have been extensively used by the international wheat research and breeding community, with >20,000 mutant seed samples distributed until March 2023 by the University of California (USA) and the John Innes Centre (UK) [plus an unknown number from five other locations that received complete Kronos mutant populations, including laboratories in Australia, Canada and China (5)].

To increase the value of these resources, we remapped the reads from the two ECs to the CS RefSeq v1.0 released in 2018 (41), and predicted the effects of the mutations using the improved gene annotation from CS RefSeq v1.1. Cadenza reads from the 1,200 lines were called using the DRAGEN system (63), whereas Kronos reads from the 1,535 lines were remapped using the MAPS pipeline (15) as part of this study. Both datasets are available in the GrainGenes Genome browser ([https://wheat.pw.usda.gov/GG3/genome\\_browser](https://wheat.pw.usda.gov/GG3/genome_browser)) for CS RefSeq v1.0. The Cadenza mutants



are also available in ENSEMBL, whereas the expanded Kronos mutations described in this study will be incorporated in the next ENSEMBL release 111 (VCF files have been submitted).

The remapped Kronos EC detected 561,605 additional mutations compared with the original study (5), while maintaining a very low estimated error (0.34%). This was achieved by using a stringency level adjusted by library rather than the uniform HetMC5/HomMC3 used in the previous study. This change was motivated by the finding of a significant correlation in %-EMS between the EC and PC in Kronos, which were generated using the same sequencing libraries. This significant correlation suggested that the %-EMS was significantly affected by the quality of the libraries. By adjusting the stringency level based on the quality of the library, we were able to eliminate more mutations from the poor-quality libraries (lower %-EMS) and to extract more mutations from the good quality ones, which greatly exceeded the problematic ones. This method reduced the correlation between the PC and EC studies for %-EMS (*SI Appendix, Table S2*), suggesting a reduced effect of the differences in sequencing library quality on the selected mutations.

The characterization of the non-EMS mutations (*SI Appendix, Table S11*) revealed that they were all highly heterozygous (>99.9%). This result suggested that these were errors originated in the  $M_2$  plants or DNA, possibly during library construction or sequencing. We also observed an excess of C>A/G>T changes relative to the other non-EMS changes both in the PC (47.9%) and EC (36.8%, *SI Appendix, Table S11*). One potential cause for a high proportion of C>A/G>T errors is DNA oxidation during the acoustic shearing step of sequencing library preparation, particularly when the DNA contains reactive contaminants from the extraction process (64). Once a guanine is converted to 8-oxoG via oxidation, it can pair with both cytosine and adenosine during PCR, leading to C>A/G>T transversions, that are more frequent in the CCG context (64). We found a similar context (GC)CG (Fig. 4B) in this study, using 60 lines with high C>A/G>T changes in both the PC and ECs. These results suggest that DNA oxidation during sonication may have contributed to the higher proportion of C>A/G>T changes relative to other errors, and to the correlation between the PC and ECs in the % EMS.

In summary, the detection of 561,605 additional high-confidence EMS mutations in the remapped EC, together with the improved gene annotation in CS RefSeq v1.1 relative to the previous CSS (5), resulted in a significant increase in the number of identified missense (59%) and truncation (49%) mutations, greatly increasing the value of this functional genetics resource.

### 4.3 Million Sequenced Mutations in the Promoter Regions of Wheat Genes.

The most significant contribution of this study is the database of 4.3 million mutations identified in the promoter regions of the annotated wheat genes. These promoter regions include *cis*-regulatory elements that control the location, growth stage, and levels of gene expression, and are frequently associated with open chromatin regions (65). Mutations in open chromatin regions, including promoter regions, have played an important role in plant and animal domestication (66–68), and explain a large amount of heritable phenotypic variance in diverse complex agronomic traits in maize and wheat (69, 70).

Changes in regulatory regions are frequently associated with more subtle phenotypic changes, and their pleiotropic effects are usually smaller than mutations in coding regions (32, 33). These properties of regulatory mutations are desirable for breeding objectives, where drastic phenotypic changes are frequently too disruptive for commercial use. The modulation of the expression of meristem regulatory genes *WUSCHEL* and *CLV3* to generate

gradual variation in tomato fruit size (39) provides a good example of these potential applications.

One limitation for the use of EMS-induced mutations to modify gene expression is that *cis*-regulatory elements are usually small, and a high mutation density is required to hit the small conserved core motifs. Even with the relatively high mutation density of the Kronos PC (41.9 mutations/kb or one mutation every 25 bp), the probability of finding a mutation in a small 6 bp target remains low (~25%). Fortunately, the estimated level of EMS mutation saturation in our PC database is relatively low (16.6%), suggesting that mutation density can be further increased by sequencing additional EMS mutagenized individuals from this population. In addition, the development of sequenced PCs in other mutagenized wheat cultivars will also increase the chance to find a mutation within a specific *cis*-regulatory element.

The sequenced mutant database for wheat promoter regions generated in this study can be complemented by CRISPR, which produces targeted mutations, and can be used to edit binding sites not covered by the EMS-induced mutations. CRISPR has also the advantage that efficient guide RNAs can be used to target simultaneously *cis*-regulatory elements in the different homeologs, and that off-target mutations are less frequent than in mutagenized plants. Genome editing is now extensively used to study gene function in plants and multiple examples of promoter editing in crop species have been reported recently (reviewed in ref. 38). However, sequenced EMS mutant databases also have some advantages, making these two approaches complementary. First, EMS mutations are not currently under government regulations in any country, facilitating their rapid incorporation into commercial cultivars. By contrast, genome editing is still facing different levels of regulation in different countries, which can be expensive and can be problematic for a globally traded crop such as wheat. Second, the generation of transgenic wheat plants still requires access to a sophisticated laboratory, which may be prohibitive for a developing country or a small wheat breeding program. However, as regulations for edited plants are relaxed, costs of transgenic plants are reduced, and more efficient promoter editing CRISPR technologies emerge (38), the use of genome editing to modify regulatory gene regions in commercial crop plants is expected to increase. Meanwhile, the wheat sequenced mutant databases presented in this study is a useful and inexpensive resource for rapid deployment of mutations in commercial wheat varieties.

A limitation for the use of promoter mutations generated by EMS or CRISPR in wheat is that, sometimes, the effect of the mutation in one genome can be masked by the wild-type expression of the homeologous genes. In this case, the promoter mutant can be crossed with a loss-of-function mutation in the homeologous gene to magnify its phenotypic effects. In addition, a couple of backcrosses with the nonmutagenized Kronos may be required to reduce variability and increase the power to detect those phenotypic effects. Another limitation for both approaches is that the annotation of the promoters in most wheat genes is almost nonexistent. Fortunately, Assay for Transposase-Accessible Chromatin with sequencing (ATAC-seq) (65, 71), DNA Affinity Purification sequencing (DAP-seq) (72, 73), and Chromatin Immunoprecipitation sequencing (CHIP-seq) (21, 74) experiments in wheat are leading to improvements in the annotation of promoter and *cis*-regulatory element of some important genes. ATAC-seq data from wheat roots and leaf protoplasts (65, 71) have been incorporated into the public genome browser for CS RefSeq v1.0 in GrainGenes ([https://graingenes.org/GG3/genome\\_browser](https://graingenes.org/GG3/genome_browser)) together with the promoter mutations reported here. Combining these tracks, the users can prioritize promoter mutations located in open chromatin regions.

**Characterization of Mutations in the *VRN-A1* Promoter.** In this study, we explored the effect of induced mutations in conserved regions of the *VRN1* promoter on heading time and SNS as an example of the value of this sequenced mutant collection. *VRN1* encodes a MADS-box protein that plays a critical role in the regulation of the transition of the shoot apical meristem (SAM) to the reproductive phase (50, 75). The ancestral *VRN1* allele for winter growth habit requires long exposures to low temperature (vernalization) to be expressed, making *VRN1* a central gene in the flowering pathway in the temperate grasses (50, 75–78). However, mutations in the *VRN1* promoter or deletions in the first intron eliminate the vernalization requirement resulting in a spring growth habit (48, 49, 79, 80). The Kronos *VRN-A1* allele targeted in this study has a large intron deletion that eliminates the vernalization requirement.

Loss-of-function mutations in *VRN1* not only delay Kronos heading time but also increase SNS, indicating a role in the regulations of the transition of the inflorescence meristem into a terminal spikelet (24). Plants with combined loss-of-function mutants in *VRN1* and its closest paralog *FUL2* cannot form spikelets and have an indeterminate spike, indicating an essential role of these two genes in the formation of both terminal and lateral spikelets (24). Overexpression of rice *MADS15* (the homolog of *FUL2*) reduces the number of primary branches in the rice panicle (81), suggesting a conserved role of these MADS-box genes in inflorescence development in grasses.

We focused on the effect of two EMS mutations located within conserved regions of the *VRN-A1* promoter, which potentially affect SPL- and LFY-predicted binding sites. In Arabidopsis, these two TFs are known to bind directly to the promoter of *API* (82, 83), which is a homolog of wheat *VRN1* (84). SPLs are plant-specific TFs that bind to a GTAC core sequence that is conserved from Arabidopsis (83) to wheat (85), and are known to affect flowering time (83) and inflorescence architecture (52, 86). The mutation in the conserved SPL-binding site in the *VRN1* promoter resulted in a small but significant effect on *VRN1* transcript levels in early spike development (Fig. 5C), which was not associated with significant changes in heading time or SNS (Fig. 5D). We are currently crossing the SPL-binding site mutant with a *VRN-B1* mutant, to test if the expression of the homeologous gene is masking the phenotypic effect of the mutations.

LFY plays an important role in the specification of the floral meristem in Arabidopsis, and a separate role in the transcriptional activation of *API* (82). LFY loss-of-function mutations in rice show increased transcript levels of *MADS14* and *MADS15* (rice homologs of *API* and *VRN1*) and reduced number of primary branches and spikelet numbers, suggesting that LFY acts as a transcriptional repressor of these MADS-box genes during early panicle development (87). Consistent with the results of studies in rice, the Kronos mutant for the LFY-binding site in the *VRN1* promoter was associated with a slight but significant upregulation of *VRN1* during the early stages of spikelet development (before terminal spikelet formation) (Fig. 5G) and a significant reduction in the number of spikelets per spike (Fig. 5H). This result indicates that LFY is involved in the regulation of the transition of the inflorescence meristem to a terminal spikelet.

Interestingly, the LFY-binding site mutant showed no significant differences in heading time or leaf number from the wild-type plants (*SI Appendix, Table S10*), which suggests that this mutation has limited effect on the timing of the transition of the SAM from the vegetative to reproductive stage or in the duration of the elongation phase. Taken together, these results indicate that mutations in the *VRN1* regulatory regions can be used to separate the pleiotropic effects of this gene on heading time and SNS.

New methods, such as DAP-seq (88), are generating massive amounts of predicted TF-binding motifs, which will require functional validation. Sequenced PCs of mutant populations, as the one presented here for tetraploid wheat, can provide a general and inexpensive resource to validate these predicted binding sites. The two mutations in the promoter of the wheat *VRN1* gene described in this study also exemplify the potential of this genomic tool to alter gene expression and modulate phenotypic effects.

The rapid increases in wheat production and nutritional value required to feed a growing human population rely on natural or induced genetic variants affecting useful agronomic traits. We provide here a database of 4.3 million sequenced induced mutations in the promoter regions of most wheat genes, which can be used to validate regulatory regions and modify gene expression and associated phenotypes. In addition, the expanded database of 4.7 million mutations in gene coding regions and their improved annotations provide a useful tool to study gene function and generate allelic variants not present in nature. These publicly available sequenced wheat mutant lines have the potential to accelerate and democratize functional genetic studies in a crop species that is critical for global food security.

## Materials and Methods

**PC and Sequencing.** Library preparation, capture, and sequencing are described in detail in *SI Appendix, Method S1*. The wheat PC (42) probes were ordered from Roche (SeqCap EZ Prime Developer Probes 96 Reaction, catalog number 8247633001). For the capture, 24 DNA libraries (125 ng/sample, 3 µg in total) were pooled and mixed with blocking oligos, denatured at 95 °C for 10 min and hybridized to the probes for 70 h at 48 °C.

The captured DNA was amplified for ten cycles using KAPA HiFi HotStart ReadyMix (6.25 mL, Roche, catalog number 7958935001) and purified in 1.8 × volume of Agencourt AMPure beads (Beckman Coulter, catalog number A63881). Captured DNA was quantified using QUBIT 2.0. Two wheat captures were pooled (48 libraries) and sequenced in one lane of Illumina NovaSeq S4 (PE150) at the Genome Center of UC Davis.

**Data Processing.** Illumina sequencing reads were preprocessed to trim adapters with Trimmomatic v0.39 (89). Trimmed reads were aligned to Chinese Spring RefSeqv1.0 (chromosomes A, B and Un) and Kronos De novo assembly using "bwa aln" v0.7.16a-r1181 with a maximum difference 3 (90). Alignments were sorted by using samtools v1.7 (91), and duplicate reads were removed with Picard tools v2.7.1 (<http://broadinstitute.github.io/picard/>). The PC assay covers two kb of sequence upstream of the start of the annotation of all high-confidence genes of CS RefSeq v1.1 (42). Mutations were called with the MAPS pipeline (*SI Appendix, Method S2*), and those located in residual genetic heterogeneity (RH) regions were removed using a previously published bioinformatics pipeline (5). Error rate determination was performed as described in *SI Appendix, Method S3*. Heterozygous mutations were converted into homozygous classifications when the proportion of wild-type reads was less than 15% (5). Methods for determining the mutations predicted effects on gene function are described in *SI Appendix, Method S4*.

**Functional Validation of Mutations in Predicted Transcription Factors' Binding Sites.** To find conserved elements within the *VRN-A1* promoter, we identified the orthologous genes in other grass species and performed a multiple sequence alignment with the online tool M-Coffee (<https://tcoffee.org.eu/apps/tcoffee/do.mcoffee>). Within the conserved region, we searched for potential TF-binding sites at PlantPAN 3.0 Promoter Analysis (<http://plantpan.itps.ncku.edu.tw/plantpan3/promoter.php>). Finally, we studied the effect of these mutations on *VRN-A1* expression using genome-specific qRT-PCR primers developed in a previous study (92), and on spike development and heading time.

**Data, Materials, and Software Availability.** The datasets generated in this study are available in Zenodo (<https://doi.org/10.5281/zenodo.7754136>) (93), which includes direct links to the EC ([https://zenodo.org/record/7754136/files/ExonCapture\\_ems\\_only\\_uniq\\_noD\\_VEP\\_triticum\\_aestivum\\_cache50](https://zenodo.org/record/7754136/files/ExonCapture_ems_only_uniq_noD_VEP_triticum_aestivum_cache50)).

vcf?download=1) and PC ([https://zenodo.org/record/7754136/files/PC\\_EMS\\_only.vcf?download=1](https://zenodo.org/record/7754136/files/PC_EMS_only.vcf?download=1)) VCF files. The promoter capture data, the reanalyzed exome capture data, and the SNP effects can be accessed through the USDA GrainGenes Genome Browsers by selecting the CS reference genome RefSeq v1.0 ([https://wheat.pw.usda.gov/GG3/genome\\_browser](https://wheat.pw.usda.gov/GG3/genome_browser)). Seeds for the VRN1 promoter Kronos mutants can be requested from the Germplasm Resources Unit at the John Innes Centre and from Dr. Dubcovsky Laboratory Tilling Distribution, <https://dubcovskylab.ucdavis.edu/wheat-tilling>. Backups of the complete Kronos mutant population have been deposited in CIMMYT (Mexico), Shandong Agricultural University in China, the University of Saskatchewan in Canada, the quarantine repository in Australia, the Cereal Disease Laboratory (MN, USA), and Washington State University (WA, USA).

**ACKNOWLEDGMENTS.** We thank Dr. Chengxia Li for her valuable advice on gene expression experiment design, Dr. D. P. Woods for materials for the LFY-binding site mutation experiments, and Huiqiong Lin for helping collect apexes in the LFY-binding site mutation expression experiment. J.D. acknowledges

support from the Howard Hughes Medical Institute (HHMI Researcher Funding, <https://www.hhmi.org/>) and from the United States Department of Agriculture, National Institute of Food and Agriculture (<https://nifa.usda.gov/>) competitive Grant 2022-68013-36439 (WheatCAP). H.X. and J.D. acknowledge support from the IAEA TC project (CRP5024).

Author affiliations: <sup>a</sup>Department of Plant Sciences, University of California, Davis, CA 95616; <sup>b</sup>Institute of Crop Sciences, Chinese Academy of Agricultural Sciences, Beijing 100081, China; <sup>c</sup>HHMI, Chevy Chase, MD 20815; <sup>d</sup>Nevada Bioinformatics Center, University of Nevada, Reno, NV 89557; <sup>e</sup>Department of Plant Pathology, Kansas State University, Manhattan, KS 66506; <sup>f</sup>United States Department of Agriculture - Agricultural Research Service, Wheat Health, Genetics and Quality Research Unit, Pullman, WA 99164; <sup>g</sup>United States Department of Agriculture - Agricultural Research Service, Cereal Disease Laboratory, Saint Paul, MN 55108-6086; <sup>h</sup>United States Department of Agriculture - Agricultural Research Service, Plant Science Research Unit, Raleigh, NC 27695; <sup>i</sup>Crop Development Centre, University of Saskatchewan, Saskatoon S7N 5A8, Canada; and <sup>j</sup>United States Department of Agriculture - Agricultural Research Service, Cereal Crops Research Unit, Northern Crop Science Laboratory, Fargo, ND 58102

- M. P. Reynolds, H. Braun, "Wheat improvement" in *Wheat improvement, Food Security in a Changing Climate* (Springer Nature Switzerland, 2022), pp. 3–16.
- I. J. Stadler, Chromosome number and the mutation rate in Avena and Triticum. *Proc. Natl. Acad. Sci. U.S.A.* **15**, 876–881 (1929).
- L. J. Stadler, Some genetic effects of X-rays in plants. *J. Hered.* **21**, 3–19 (1930).
- H. K. Sharma-Rao, E. R. Sears, Chemical mutagenesis in *Triticum aestivum*. *Mutation Res.* **1**, 387–390 (1964).
- K. V. Krasileva *et al.*, Uncovering hidden variation in polyploid wheat. *Proc. Natl. Acad. Sci. U.S.A.* **114**, E913–E921 (2017).
- C. Uauy, B. H. Wulff, J. Dubcovsky, Combining traditional mutagenesis with new high-throughput sequencing and genome editing to reveal hidden variation in polyploid wheat. *Annu. Rev. Genet.* **51**, 435–454 (2017).
- S. Huang *et al.*, Genes encoding plastid acetyl-CoA carboxylase and 3-phosphoglycerate kinase of the *Triticum/Aegilops* complex and the evolutionary history of polyploid wheat. *Proc. Natl. Acad. Sci. U.S.A.* **99**, 8133–8138 (2002).
- T. Marcussen *et al.*, Ancient hybridizations among the ancestral genomes of bread wheat. *Science* **345**, 1250092 (2014).
- F. Salami, H. Ozkan, A. Brandolini, R. Schafer-Pregl, W. Martin, Genetics and geography of wild cereal domestication in the Near East. *Nat. Rev. Genet.* **3**, 429–441 (2002).
- J. Dubcovsky, J. Dvorak, Genome plasticity a key factor in the success of polyploid wheat under domestication. *Science* **316**, 1862–1866 (2007).
- C. Uauy *et al.*, A modified TILLING approach to detect induced mutations in tetraploid and hexaploid wheat. *BMC Plant Biol.* **9**, 115 (2009).
- N. Rawat *et al.*, A TILLING resource for hard red winter wheat variety Jagger. *Crop Sci.* **59**, 1666–1671 (2019).
- A. J. Slade, S. I. Fuerstenberg, D. Loeffler, M. N. Steine, D. Facciotti, A reverse genetic, nontransgenic approach to wheat crop improvement by TILLING. *Nat. Biotechnol.* **23**, 75–81 (2005).
- C. M. McCallum, L. Comai, E. A. Greene, S. Henikoff, Targeting induced local lesions IN genomes (TILLING) for plant functional genomics. *Plant Physiol.* **123**, 439–442 (2000).
- I. M. Henry *et al.*, Efficient genome-wide detection and cataloging of EMS-induced mutations using exome capture and next-generation sequencing. *Plant Cell* **26**, 1382–1397 (2014).
- A. Chen, J. Dubcovsky, Wheat TILLING mutants show that the vernalization gene *VRN1* down-regulates the flowering repressor *VRN2* in leaves but is not essential for flowering. *PLoS Genet.* **8**, e1003134 (2012).
- B. Lv *et al.*, Characterization of *FLOWERING LOCUS T1 (FT1)* gene in *Brachypodium* and wheat. *PLoS One* **9**, e94171 (2014).
- A. Chen *et al.*, Phytochrome C plays a major role in the acceleration of wheat flowering under long-day photoperiod. *Proc. Natl. Acad. Sci. U.S.A.* **111**, 10037–10044 (2014).
- L. M. Shaw *et al.*, Epistatic interactions between *PHOTOPERIOD1*, *CONSTANS1* and *CONSTANS2* modulate the photoperiodic response in wheat. *PLoS Genet.* **16**, e1008812 (2020).
- L. M. Shaw *et al.*, *FLOWERING LOCUS T2* regulates spike development and fertility in temperate cereals. *J. Exp. Bot.* **70**, 193–204 (2019).
- M. A. Alvarez *et al.*, *EARLY FLOWERING 3* interactions with *PHYTOCHROME B* and *PHOTOPERIOD1* are critical for the photoperiodic regulation of wheat heading time. *PLoS Genet.* **19**, e1010655 (2023).
- J. M. Debernardi, J. R. Greenwood, E. Jean Finnegan, J. Jernstedt, J. Dubcovsky, *APETALA 2*-like genes *AP2L2* and *Q* specify lemma identity and axillary floral meristem development in wheat. *Plant J.* **101**, 171–187 (2020).
- J. M. Debernardi, H. Lin, G. Chuck, J. D. Faris, J. Dubcovsky, microRNA172 plays a crucial role in wheat spike morphogenesis and grain threshability. *Development* **144**, 1966–1975 (2017).
- C. Li *et al.*, Wheat *VRN1*, *FUL2* and *FUL3* play critical and redundant roles in spikelet development and spike determinacy. *Development* **146**, dev175398 (2019).
- K. Li *et al.*, Interactions between *SQUAMOSA* and *SVP* MADS-box proteins regulate meristem transitions during wheat spike development. *The Plant Cell* **33**, 3621–3644 (2021).
- N. M. Adamski *et al.*, Ectopic expression of *Triticum polonicum VRT-A2* underlies elongated glumes and grains in hexaploid wheat in a dosage-dependent manner. *The Plant Cell* **33**, 2296–2319 (2021).
- J. Simmonds *et al.*, A splice acceptor site mutation in *TaGW2-A1* increases thousand grain weight in tetraploid and hexaploid wheat through wider and longer grains. *Theor. Appl. Genet.* **129**, 1099–1112 (2016).
- N. Poursarebani *et al.*, The genetic basis of composite spike form in barley and "Miracle-Wheat". *Genetics* **201**, 155–165 (2015).
- L. E. Dixon *et al.*, *TEOSINTE BRANCHED1* regulates inflorescence architecture and development in bread wheat (*Triticum aestivum*). *Plant Cell* **30**, 563–581 (2018).
- P. Glenn *et al.*, Identification and characterization of a natural polymorphism in *FT-2A* associated with increased number of grains per spike in wheat. *Theor. Appl. Genet.* **135**, 679–692 (2022).
- S. Kuzay *et al.*, *WAP0-A1* is the causal gene of the 7AL QTL for spikelet number per spike in wheat. *PLoS Genet.* **18**, e1009747 (2022).
- P. J. Wittkopp, G. Kalay, Cis-regulatory elements: Molecular mechanisms and evolutionary processes underlying divergence. *Nat. Rev. Genet.* **13**, 59–69 (2012).
- M. S. Hill, P. Vande Zande, P. J. Wittkopp, Molecular and evolutionary processes generating variation in gene expression. *Nat. Rev. Genet.* **22**, 203–215 (2021).
- S. Konishi *et al.*, An SNP caused loss of seed shattering during rice domestication. *Science* **312**, 1392–1396 (2006).
- B. Ruan *et al.*, Natural variation in the promoter of *TGW2* determines grain width and weight in rice. *New Phytol.* **227**, 629–640 (2020).
- C. Xu *et al.*, Differential expression of *G55* regulates grain size in rice. *J. Exp. Bot.* **66**, 2611–2623 (2015).
- J. Zhang *et al.*, A single nucleotide polymorphism at the *Vrn-D1* promoter region in common wheat is associated with vernalization response. *Theor. Appl. Genet.* **125**, 1697–1704 (2012).
- X. Tang, Y. Zhang, Beyond knockouts: Fine-tuning regulation of gene expression in plants with CRISPR-Cas-based promoter editing. *New Phytol.* **239**, 868–874 (2023).
- D. Rodriguez-Leal, Z. H. Lemmon, J. Man, M. E. Bartlett, Z. B. Lippman, Engineering quantitative trait variation for crop improvement by genome editing. *Cell* **171**, 470–480 (2017).
- L. Liu *et al.*, Enhancing grain-yield-related traits by CRISPR-Cas9 promoter editing of maize CLE genes. *Plant J.* **7**, 287–294 (2021).
- International Wheat Genome Sequencing Consortium, Shifting the limits in wheat research and breeding using a fully annotated reference genome. *Science* **361**, eaar7191 (2018).
- L. J. Gardiner *et al.*, Integrating genomic resources to present full gene and putative promoter capture probe sets for bread wheat. *Gigascience* **8**, giz018 (2019).
- W. McLaren *et al.*, The ensemble variant effect predictor. *Genome Biol.* **17**, 122 (2016).
- P. C. Ng, S. Henikoff, SIFT: Predicting amino acid changes that affect protein function. *Nucleic Acids Res.* **31**, 3812–3814 (2003).
- F. Choulet *et al.*, Megabase level sequencing reveals contrasted organization and evolution patterns of the wheat gene and transposable element spaces. *Plant Cell* **22**, 1686–1701 (2010).
- P. Hucl, Out-crossing rates for 10 Canadian spring wheat cultivars. *Can. J. Plant Sci.* **76**, 423–427 (1996).
- K. V. Krasileva *et al.*, Correction to "Uncovering hidden variation in polyploid wheat". *Proc. Natl. Acad. Sci. U.S.A.*, 10.1073/pnas.2313894120 (2023).
- D. Fu *et al.*, Large deletions within the first intron in *VRN-1* are associated with spring growth habit in barley and wheat. *Mol. Genet. Genomics* **273**, 54–65 (2005).
- L. Yan *et al.*, Allelic variation at the *VRN-1* promoter region in polyploid wheat. *Theor. Appl. Genet.* **109**, 1677–1686 (2004).
- L. Yan *et al.*, Positional cloning of wheat vernalization gene *VRN1*. *Proc. Natl. Acad. Sci. U.S.A.* **100**, 6263–6268 (2003).
- J. Kropat *et al.*, A regulator of nutritional copper signaling in *Chlamydomonas* is an SBP domain protein that recognizes the GTAC core of copper response element. *Proc. Natl. Acad. Sci. U.S.A.* **102**, 18730–18735 (2005).
- K. Miura *et al.*, *OsSPL14* promotes panicle branching and higher grain productivity in rice. *Nat. Genet.* **42**, 545–549 (2010).
- L. Wang *et al.*, Coordinated regulation of vegetative and reproductive branching in rice. *Proc. Natl. Acad. Sci. U.S.A.* **112**, 15504–15509 (2015).
- L. Z. Si *et al.*, *OsSPL13* controls grain size in cultivated rice. *Nat. Genet.* **48**, 447–456 (2016).
- C. Selva *et al.*, *HvLEAFY* controls the early stages of floral organ specification and inhibits the formation of multiple ovaries in barley. *Plant J.* **108**, 509–527 (2021).
- S. Walkowiak *et al.*, Multiple wheat genomes reveal global variation in modern breeding. *Nature* **588**, 277–283 (2020).
- F. He *et al.*, Exome sequencing highlights the role of wild-relative introgression in shaping the adaptive landscape of the wheat genome. *Nat. Genet.* **51**, 896–904 (2019).
- R. H. Ramirez-Gonzalez *et al.*, The transcriptional landscape of polyploid wheat. *Science* **361**, eaar6089 (2018).
- F. He *et al.*, Genomic variants affecting homoeologous gene expression dosage contribute to agronomic trait variation in allopolyploid wheat. *Nat. Commun.* **13**, 826 (2022).
- J. M. Debernardi *et al.*, A GRF-GIF chimeric protein improves the regeneration efficiency of transgenic plants. *Nat. Biotechnol.* **38**, 1274–1279 (2020).
- K. Wang *et al.*, The gene *TaWOX5* overcomes genotype dependency in wheat genetic transformation. *Nat. Plants* **8**, 110–117 (2022).

62. International Wheat Genome Sequencing Consortium, A chromosome-based draft sequence of the hexaploid bread wheat (*Triticum aestivum*) genome. *Science* **345**, 1251-1258 (2014).
63. A. Goyal *et al.*, Ultra-fast next generation human genome sequencing data processing using DRAGEN™ bio-IT processor for precision medicine *Open. J. Genet.* **7**, 9–19 (2017).
64. M. Costello *et al.*, Discovery and characterization of artifactual mutations in deep coverage targeted capture sequencing data due to oxidative DNA damage during sample preparation. *Nucleic Acids Res.* **41**, e67 (2013).
65. J. M. Debernardi *et al.*, Optimization of ATAC-seq in wheat seedling roots using INTACT-isolated nuclei. *BMC Plant Biol.* **23**, 270 (2023).
66. R. S. Meyer, M. D. Purugganan, Evolution of crop species: Genetics of domestication and diversification. *Nat. Rev. Genet.* **14**, 840–852 (2013).
67. K. M. Olsen, J. F. Wendel, A bountiful harvest: Genomic insights into crop domestication phenotypes. *Annu. Rev. Plant Biol.* **64**, 47–70 (2013).
68. G. D. Wang, H. B. Xie, M. S. Peng, D. Irwin, Y. P. Zhang, Domestication genomics: Evidence from animals. *Ann. Rev. Animal Biosci.* **2**, 65–84 (2014).
69. K. W. Jordan, F. He, M. F. de Soto, A. Akhunova, E. Akhunov, Differential chromatin accessibility landscape reveals structural and functional features of the allopolyploid wheat chromosomes. *Genome Biol.* **21**, 176 (2020).
70. E. Rodgers-Melnick, D. L. Vera, H. W. Bass, E. S. Buckler, Open chromatin reveals the functional maize genome. *Proc. Natl. Acad. Sci. U.S.A.* **113**, E3177–E3184 (2016).
71. F. H. Lu *et al.*, Reduced chromatin accessibility underlies gene expression differences in homologous chromosome arms of diploid *Aegilops tauschii* and hexaploid wheat. *Gigascience* **9**, gia070 (2020).
72. M. Y. Wang *et al.*, An atlas of wheat epigenetic regulatory elements reveals subgenome divergence in the regulation of development and stress responses. *Plant Cell* **33**, 865–881 (2021).
73. Y. Y. Zhang *et al.*, Evolutionary rewiring of the wheat transcriptional regulatory network by lineage-specific transposable elements. *Genome Res.* **31**, 2276–2289 (2021).
74. W. Deng *et al.*, Direct links between the vernalization response and other key traits of cereal crops. *Nat. Commun.* **6**, 5882 (2015).
75. B. Trevaskis, D. J. Bagnall, M. H. Ellis, W. J. Peacock, E. S. Dennis, MADS box genes control vernalization-induced flowering in cereals. *Proc. Natl. Acad. Sci. U.S.A.* **100**, 13099–13104 (2003).
76. L. B. Jensen *et al.*, QTL mapping of vernalization response in perennial ryegrass (*Lolium perenne* L.) reveals co-location with an orthologue of wheat *VRN1*. *Theor. Appl. Genet.* **110**, 527–536 (2005).
77. J. vonZitzewitz *et al.*, Molecular and structural characterization of barley vernalization genes. *Plant Mol. Biol.* **59**, 449–467 (2005).
78. D. P. Woods, M. A. McKeown, Y. Dong, J. C. Preston, R. M. Amasino, Evolution of *VRN2/Ghd7*-like genes in vernalization-mediated repression of grass flowering. *Plant Physiol.* **170**, 2124–2135 (2016).
79. A. Distelfeld, C. Li, J. Dubcovsky, Regulation of flowering in temperate cereals. *Curr. Opin. Plant Biol.* **12**, 178–184 (2009).
80. N. Kippes *et al.*, Single nucleotide polymorphisms in a regulatory site of *VRN-A1* first intron are associated with differences in vernalization requirement in winter wheat. *Mol. Genet. Genomics* **293**, 1231–1243 (2018).
81. S. J. Lu *et al.*, Overexpression of a transcription factor *OsMADS15* modifies plant architecture and flowering time in rice (*Oryza sativa* L.). *Plant Mol. Biol. Rep.* **30**, 1461–1469 (2012).
82. F. Parcy, O. Nilsson, M. A. Busch, I. Lee, D. Weigel, A genetic framework for floral patterning. *Nature* **395**, 561–566 (1998).
83. J. W. Wang, B. Czech, D. Weigel, miR156-regulated *SPL* transcription factors define an endogenous flowering pathway in *Arabidopsis thaliana*. *Cell* **138**, 738–749 (2009).
84. J. C. Preston, E. A. Kellogg, Reconstructing the evolutionary history of paralogous *APETALA1/FRUITFULL*-like genes in grasses (Poaceae). *Genetics* **174**, 421–437 (2006).
85. H. C. Pei *et al.*, Low-affinity *SPL* binding sites contribute to subgenome expression divergence in allohexaploid wheat. *Sci. China Life Sci.* **66**, 819–834 (2022).
86. L. Li *et al.*, TaSPL13 regulates inflorescence architecture and development in transgenic wheat (*Triticum aestivum* L.). *Plant Sci.* **296**, 110516 (2020).
87. K. Ikeda-Kawakatsu, M. Maekawa, T. Izawa, J. I. Itoh, Y. Nagato, *ABERRANT PANICLE ORGANIZATION 2/RFL*, the rice ortholog of *Arabidopsis LEAFY*, suppresses the transition from inflorescence meristem to floral meristem through interaction with *APO1*. *Plant J.* **69**, 168–180 (2012).
88. A. Bartlett *et al.*, Mapping genome-wide transcription-factor binding sites using DAP-seq. *Nat. Protoc.* **12**, 1659–1672 (2017).
89. A. M. Bolger, M. Lohse, B. Usadel, Trimmomatic: A flexible trimmer for Illumina sequence data. *Bioinformatics* **30**, 2114–2120 (2014).
90. H. Li, R. Durbin, Fast and accurate short read alignment with Burrows-Wheeler transform. *Bioinformatics* **25**, 1754–1760 (2009).
91. H. Li *et al.*, The sequence alignment/Map format and SAMtools. *Bioinformatics* **25**, 2078–2079 (2009).
92. A. Loukoianov, L. Yan, A. Blechl, A. Sanchez, J. Dubcovsky, Regulation of *VRN-1* vernalization genes in normal and transgenic polyploid wheat. *Plant Physiol.* **138**, 2364–2373 (2005).
93. J. Zhang *et al.*, Sequencing 4.3 million mutations in wheat promoters to understand and modify gene expression. *Vcf files and VEP script*. 10.5281/zenodo.7754136. Deposited 30 March 2023.