

UCSF

UC San Francisco Previously Published Works

Title

High Mycobacterium tuberculosis Bacillary Loads Detected by Tuberculosis Molecular Bacterial Load Assay in Patient Stool: a Potential Alternative for Nonsputum Diagnosis and Treatment Response Monitoring of Tuberculosis

Permalink

<https://escholarship.org/uc/item/5hv870n5>

Journal

Microbiology Spectrum, 10(1)

ISSN

2165-0497

Authors

Musisi, Emmanuel
Sessolo, Abdul
Kaswabuli, Sylvia
[et al.](#)

Publication Date

2022-02-23

DOI

10.1128/spectrum.02100-21

Copyright Information

This work is made available under the terms of a Creative Commons Attribution License, available at <https://creativecommons.org/licenses/by/4.0/>

Peer reviewed



High *Mycobacterium tuberculosis* Bacillary Loads Detected by Tuberculosis Molecular Bacterial Load Assay in Patient Stool: a Potential Alternative for Nonsputum Diagnosis and Treatment Response Monitoring of Tuberculosis

Emmanuel Musisi,^{a,b,c} Abdul Sessolo,^b Sylvia Kaswabuli,^b Josephine Zawedde,^b Patrick Byanyima,^b Shariifah Kasinga,^b Ingvar Sanyu,^b Esther Uwimaana,^f Stanley Walimbwa,^g Joseph Olore,^g Willy Ssengooba,^h Christine Sekaggya,ⁱ Moses L. Joloba,^j William Wordria,^b Laurence Huang,^{b,d,e} Stephen H. Gillespie,^a Derek J. Sloan,^a  Wilber Sabiiti^a

^aDivision of Infection and Global Health, School of Medicine, University of St Andrews, Scotland, United Kingdom

^bInfectious Diseases Research Collaboration, Kampala, Uganda

^cDepartment of Biochemistry and Sports Sciences, Makerere University, Kampala, Uganda

^dDivision of Pulmonary and Critical Care Medicine, University of California San Francisco, San Francisco, California, USA

^eHIV/AIDS Division, University of California San Francisco, San Francisco, California, USA

^fMakerere University Lung Institute, Makerere University, Kampala, Uganda

^gNaguru Referral Hospital, Kampala, Uganda

^hDepartment of Medical Microbiology, Makerere University, Kampala, Uganda

ⁱInfectious Diseases Institute, Makerere University, Kampala, Uganda

^jDepartment of Immunology and Molecular Biology, Makerere University, Kampala, Uganda

ABSTRACT Not all patients produce sputum, yet most available TB tests use sputum. We investigated the utility of a novel RNA-based quantitative test, the tuberculosis molecular bacterial load assay (TB-MBLA), for the detection and quantification of *Mycobacterium tuberculosis* in stool. Stools from 100 adult individuals were treated with OMNIgene-sputum reagent and tested using Xpert MTB/RIF ultra (Xpert ultra), auramine O smear microscopy (smear), mycobacterial growth indicator tube (MGIT), and Lowenstein-Jensen (LJ) cultures. The remaining portions were frozen at -20°C and later tested by TB-MBLA. MGIT sputum culture was used as a TB confirmatory test and reference for stool tests. Sixty-one of 100 participants were already confirmed TB positive by MGIT sputum culture, 20 (33%) of whom were HIV coinfecting. TB-MBLA detected *M. tuberculosis* in 57/100 stool samples, including 49 already confirmed for TB. The mean bacterial load measured by stool TB-MBLA was $5.67 \pm 1.7 \log_{10}$ estimated CFU (eCFU) per mL in HIV-coinfecting participants, which was higher than the $4.83 \pm 1.59 \log_{10}$ eCFU per mL among the HIV-negative participants ($P = 0.04$). The sensitivities (95% confidence intervals [CI]) of stool assays were 80% (68 to 89) and 90% (79 to 98) for TB-MBLA and Xpert ultra, which were both higher than the 44% (32 to 58), 64% (51 to 76), and 62% (45 to 77) for smear, MGIT, and Lowenstein-Jensen (LJ) stool cultures, respectively. The specificity (95% CI) of stool assays was highest for smear, at 97% (87 to 100), followed by Xpert ultra at 91% (76 to 98), TB-MBLA at 79% (63 to 90), LJ at 80% (64 to 91), and MGIT at 62% (45 to 77). Twenty-six percent of MGIT and 21% of LJ stool cultures were indeterminate due to contamination. Detection and quantification of viable *M. tuberculosis* bacilli in stool raises its utility as an alternative to sputum as a sample type for TB diagnosis.

IMPORTANCE This paper highlights the value of stool as a sample type for diagnosis of tuberculosis. While other studies have used DNA-based assays like the Xpert MTB/RIF and culture to detect *Mycobacterium tuberculosis* in stool, this is the first study that has applied TB-MBLA, an RNA-based assay, to quantify TB bacteria in stool. The high microbial density and diversity in stool compromises the specificity and sensitivity of culture-based

Editor Tulip Jhaveri, University of Mississippi Medical Center

Copyright © 2022 Musisi et al. This is an open-access article distributed under the terms of the [Creative Commons Attribution 4.0 International license](https://creativecommons.org/licenses/by/4.0/).

Address correspondence to Emmanuel Musisi, em303@st-andrews.ac.uk.

The authors declare no conflict of interest.

Received 2 November 2021

Accepted 13 December 2021

Published 12 January 2022

tests due to overgrowth of non-*M. tuberculosis* flora. Consequently, TB-MBLA becomes the most sensitive and specific test for the detection and quantification of viable TB bacteria in stool. Most crucially, this study raises the possibility of a nonsputum alternative sample type for diagnosis of TB among people who have difficulty in producing sputum.

KEYWORDS molecular bacterial load assay, molecular diagnostics, *Mycobacterium tuberculosis*

Tuberculosis (TB) is a persistent global health challenge (1). In 2020, an estimated 9.9 million people fell ill due to TB. In the same year, an estimated 1.3 million deaths, up from 1.2 million in 2019, occurred among HIV-negative people, and an additional 214,000 deaths occurred among HIV-positive individuals (1). In 2020, WHO reported a sharp reduction in TB case notifications in several high-TB-burden countries, partly due to the COVID-19 pandemic (2). Rapid case detection and treatment initiation is critical to minimizing TB-related morbidity and mortality, especially among vulnerable groups, such as young children and people living with advanced HIV disease. However, diagnosis of TB in young children, the terminally ill, and the immunocompromised, as well as neurologically impaired patients, may be challenging due to inability to provide an adequate sputum sample, leading to low case detection and high mortality rates (3–5). Consequently, bacteriological confirmation of pulmonary TB with microscopy, culture, and Xpert MTB/RIF (Xpert) assay in such groups of individuals may benefit from the use of alternative sample types, such as gastric and nasopharyngeal aspirates (6–9). However, some of these sample collection methods are invasive and have low diagnostic yield (10). Importantly, such sampling procedures are not routinely used in low-resource, high-burden settings. WHO recommends the use of the Xpert MTB/RIF ultra (Xpert ultra) on sputum, nasopharyngeal aspirate gastric aspirates, or stool for the diagnosis of TB in children aged below 10 years (1).

Often, people swallow sputum, which ends up in the gut, and hence, stool has been suggested as an alternative or additional sample type for bacteriological confirmation of pulmonary TB (11–14). The sensitivity and specificity of the Xpert MTB/RIF evaluation of stool varies depending on the population and laboratory processing methods (11, 15–20). The new version, the Xpert MTB/RIF ultra (Xpert ultra), has been shown to have better sensitivity (21); however, Xpert ultra may detect DNA from dead bacilli (22). On the other hand, mycobacterial growth indicator tube (MGIT) stool culture is associated with low yield on stool samples (23).

The tuberculosis molecular bacterial load assay (TB-MBLA) was developed to utilize the abundant cellular 16S rRNA as a marker for the detection and quantification of viable *Mycobacterium tuberculosis* bacilli in sputum samples. Like viral-load monitoring in HIV-positive individuals, TB-MBLA monitors the TB treatment response by measuring changes in the *M. tuberculosis* bacillary load over the course of treatment (24–29). Consequently, TB-MBLA potentially offers both diagnostic and treatment response monitoring advantages in real time to inform clinical decision making. A recent multisite study of adult TB patients showed that TB-MBLA is more sensitive than MGIT sputum culture and that its results are reproducible in different settings (30). Additionally, TB-MBLA was proven to differentiate the treatment outcomes of different TB regimens (31). Although TB-MBLA may detect and quantify *M. tuberculosis* in stool samples, its utility in stool has not been assessed. Having a sensitive quantitative test that can be used on an easily accessible sample may improve TB diagnosis and treatment response monitoring in patients who do not provide suitable sputum samples easily.

In this study, we assessed the ability of TB-MBLA to detect and quantify viable *M. tuberculosis* bacilli in archived stool samples from presumptive pulmonary TB patients. We show that *M. tuberculosis* in patient stools was detectable by TB-MBLA with high sensitivity and specificity and that stool could be an alternative sample type for nonsputum diagnosis and treatment response monitoring of TB.

RESULTS

Study participants. Most of the study participants, 54/100, were female adults aged between 33 and 36 years. Of the 100 stool samples tested, 61 samples had already

TABLE 1 Demographic and clinical characteristics of the participants who provided stool samples

Characteristic ^a	Median value (IQR) or no. (%)			P value ^e
	Overall (n = 100)	Participants with indicated pulmonary TB status ^b		
		Positive (n = 61 [61%])	Negative (n = 39 [39%])	
Age (yr)	34 (25–42)	33 (25–41)	36 (26–45)	0.72
Female	53 (53)	32 (52.5)	21 (53.9)	0.80
HIV positive	36 (35)	20 (33)	16 (41)	0.27
ART use	20 (38)	10 (16.4)	10 (26)	0.31
CD4 cells/ μ L ^d	110 (44–228)	71 (26–171)	170 (66–254)	0.03
BMI	20 (18–22)	19.7 (18–23)	19 (17–21)	
Alcohol use	66 (66)	42 (69)	24 (61)	0.63
Smoking	21 (21)	12 (20)	9 (23)	0.73
Fever	79 (79)	48 (78.7)	31 (79)	0.86
Wt loss of >5%	87 (87)	54 (88.5)	33 (84)	0.78
Cough for >2 wks	100 (100)	61 (100)	39 (100)	0.46
HR	100 (84–111)	100 (84–111)	101 (81–111)	
RR	22 (20–26)	22 (20–26)	24 (20–27)	

^aHIV, human immunodeficiency virus; ART, antiretroviral therapy; BMI, body mass index; HR, heart rate; RR, respiratory rate.

^bBacteriologically confirmed positive or negative TB cases.

^cComparison between pulmonary-TB-positive and -negative participants.

^dMeasured for HIV-infected adults only (n = 36).

been confirmed positive for pulmonary tuberculosis using MGIT sputum culture. Among the participants who were confirmed positive for pulmonary tuberculosis, 20 (33%) were living with HIV infection, with a median CD4 cell count of 70.5 cells/ μ L, including 5 (8%) who were on HIV treatment. All participants reported at least one of the following symptoms prior to enrollment: unexplained persistent fever, weight loss, and cough (Table 1).

Stool *M. tuberculosis* bacillary load quantification. Measured as the conversion of quantification cycle (C_q) values to CFU per mL, the overall mean bacterial load (mean \pm standard deviation [SD]) in stool was $5.1 \pm 1.59 \log_{10}$ estimated CFU (eCFU) per mL. Stool from participants living with HIV had a mean bacterial load of $5.67 \pm 1.7 \log_{10}$ eCFU per mL, which was higher than the $4.83 \pm 1.59 \log_{10}$ eCFU per mL in stool of HIV-negative participants ($P = 0.04$). In line with previously published data for sputum TB-MBLA (25), the C_q values and the molecular bacterial loads measured by the stool TB-MBLA were inversely related ($r = -0.99$) (Fig. 1). To compare the quantification between stool TB-MBLA and stool Xpert ultra, samples that were positive by both assays were considered. The mean cycle threshold (C_T) values of all the stool Xpert ultra probes were calculated and compared with the C_q values of the stool TB-MBLA. A Mann-Whitney test showed that the median C_q value of 20.3 (interquartile range [IQR], 15.4 to 24.8) for the stool TB-MBLA was significantly lower than the median C_q value of 25.1 (IQR, 22 to 28) for stool Xpert ultra ($P < 0.00001$; $n = 45$). Importantly, we note that equal volumes of stool sample were used for TB-MBLA and Xpert

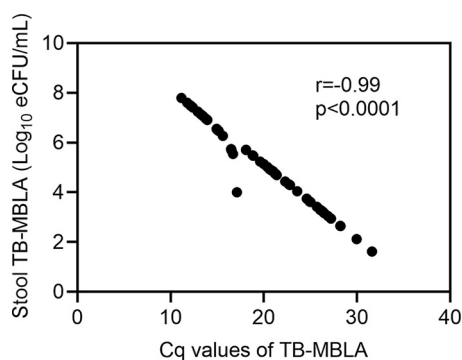


FIG 1 Correlation between the TB-MBLA C_q and bacterial load values in stool samples. The molecular bacterial loads (\log_{10} CFU/mL) and the C_q values showed a strong negative correlation ($r = -0.99$).

TABLE 2 Results for analysis of accuracy of stool assays

Test ^a	Mean value (95% CI) for ^b :			
	Sensitivity	Specificity	PPV	NPV
TB-MBL ^c	80 (68–89)	79 (63–90)	86 (74–93)	72 (56–85)
Xpert ultra	90 (79–98)	91 (76–98)	86 (70–95)	86 (70–95)
FM smear	44 (32–58)	97 (87–100)	96 (82–100)	53 (41–65)
MGIT culture	64 (51–76)	62 (45–77)	52 (37–67)	52 (37–67)
LJ culture	44 (32–58)	80 (64–91)	48 (35–61)	48 (35–61)

^aTB-MBLA, tuberculosis molecular bacterial load assay; Xpert ultra, Xpert MTB/RIF ultra; FM, fluorescence microscopy; MGIT, mycobacterial growth indicator tube; LJ, Löwenstein-Jensen.

^bMGIT sputum culture was used as the reference. PPV, positive predictive value; NPV, negative predictive value.

^cDone using stool frozen at -20°C for 18 months.

ultra. A Spearman's correlation analysis showed a nonsignificant positive correlation between the stool TB-MBLA and stool Xpert ultra C_T values ($r = 0.17$, $P = 0.25$).

Sensitivity and specificity of stool assays with reference to MGIT sputum culture.

Using MGIT sputum culture as the reference test, the sensitivity (95% CI) of stool assays was 80% (68 to 89) for TB-MBLA and 90% (79 to 98) for Xpert ultra, and both were higher than the 44% (32 to 58) for smear, 64% (51 to 76) for MGIT, and 62% (45 to 77) for LJ stool cultures. The specificity (95% CI) of stool assays was highest for smear at 97% (87 to 100), followed by 91% (76 to 98) for Xpert ultra, 79% (63 to 90) for TB-MBLA, 80% (64 to 91) for LJ, and 62% (45 to 77) for MGIT (Table 2).

Concordance between stool assays and MGIT sputum culture. Sixty-one of 100 of the tested participants were confirmed positive for pulmonary tuberculosis (PTB) by MGIT sputum culture. TB-MBLA detected and quantified *M. tuberculosis* in 57/100 participants, 49 of whom were among the 61 participants that had already been confirmed PTB positive by MGIT sputum culture. Stool Xpert ultra identified *M. tuberculosis* in 55/100 of the tested samples, of which 51/100 had been confirmed by MGIT sputum culture. Stool LJ culture detected the lowest number, 27 of the 61 MGIT sputum-positive cultures (Fig. 2). The overall percentages of concordance of stool positivity and negativity to MGIT sputum culture results were higher with molecular assays than with nonmolecular assays. Using kappa analysis, the two molecular assays strongly agreed with MGIT sputum culture, at 81% ($\kappa = 0.6$) for TB-MBLA and 87% ($\kappa = 0.72$) for Xpert ultra. Among the nonmolecular assays,

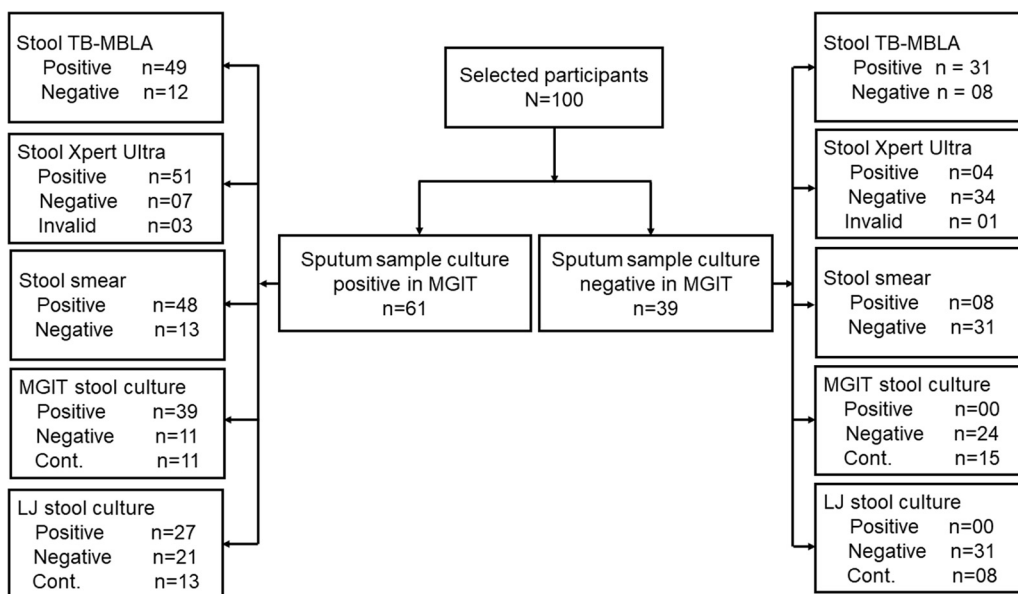


FIG 2 Flow chart showing the numbers of patients, samples, and test results for stool samples. TB-MBLA, tuberculosis molecular bacterial load assay; Xpert, Xpert MTB/RIF ultra; smear, smear fluorescence microscopy; MGIT, mycobacterial growth indicator tube; LJ, Löwenstein-Jensen culture.

TABLE 3 Results for analysis of the concordance of stool assays and MGIT sputum culture results

Test ^a	% agreement			κ statistic	Strength
	Positive	Negative	Overall		
TB-MBLA	82	89	84	0.67	Substantial
Xpert ultra	85	90	87	0.72	Substantial
MGIT culture	62	60	61	0.2	Poor
LJ culture	43	80	56	0.19	Poor
FM smear ^b	42	97	61	0.31	Fair

^aTB-MBLA, tuberculosis molecular bacterial load assay; Xpert ultra, Xpert MTB/RIF ultra; MGIT, mycobacterial growth indicator tube; LJ, Löwenstein-Jensen; FM, fluorescence microscopy.

^bDone using stool frozen at -20°C for 18 months.

stool smear had the highest concordance with the MGIT sputum culture, at 63% ($\kappa = 0.34$), followed by MGIT stool at 46% ($\kappa = 0.2$) and LJ stool at 42% ($\kappa = 0.2$), respectively (Table 3).

Concordance within TB-positive stool assays. Using a Venn diagram, we illustrated the levels of concordance within stool assays. Considering the samples detected as TB positive by each test, we found that only 14/100 were consistently positive by all five stool tests. Concordance was highest between the two molecular tests, stool TB-MBLA and Xpert ultra, with agreement for 45/100 samples tested. Molecular tests and combined stool MGIT and LJ cultures showed the 2nd highest concordance, with agreement for 21/100 samples tested. Concordance was only 14/100 in a combination of stool TB-MBLA, Xpert ultra, smear, and LJ culture (Fig. 3).

Indeterminate stool culture. We noted that 26% and 21% of MGIT and LJ stool cultures, respectively, were contaminated, and their results were indeterminate (neither positive nor negative status) (Table 4). Twelve (46%) of the indeterminate MGIT stool

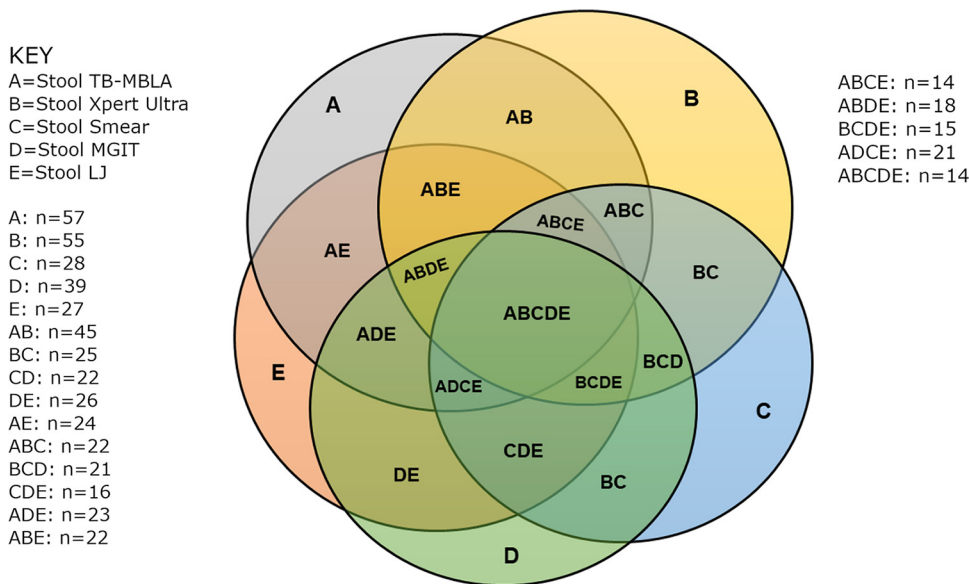


FIG 3 Venn diagram for positive results for stool assays. A, TB-MBLA ($n = 57$); B, Xpert ultra ($n = 55$); C, smear ($n = 28$); D, MGIT culture ($n = 39$); E, LJ culture ($n = 27$); AB, TB-MBLA and Xpert ultra ($n = 45$); BC, Xpert ultra and smear ($n = 25$); CD, smear and MGIT culture ($n = 22$); DE, MGIT culture and LJ culture ($n = 26$); AE, TB-MBLA and LJ culture ($n = 24$); ABC, TB-MBLA, Xpert ultra, and smear ($n = 22$); BCD, Xpert ultra, smear, and MGIT culture ($n = 21$); CDE, smear, MGIT culture, and LJ culture ($n = 16$); ADE, MGIT culture, LJ culture, and TB-MBLA ($n = 23$); ABE, TB-MBLA, Xpert ultra, and LJ culture ($n = 22$); ABCE, TB-MBLA, Xpert ultra, smear, and LJ culture ($n = 14$); ABCD, TB-MBLA, Xpert ultra, smear, and MGIT culture ($n = 18$); BCDE, Xpert ultra, smear, MGIT culture, and LJ culture ($n = 15$); ABDE, TB-MBLA, Xpert ultra, MGIT culture, and LJ culture ($n = 21$); ABCDE, TB-MBLA, Xpert ultra, smear, MGIT culture, and LJ culture ($n = 14$). It is apparent that molecular assays detect more TB-positive cases than do smear and culture tests and that combining molecular assays with stool culture or stool smear microscopy does not increase the number of identified TB cases, meaning that one molecular test is sufficient for a clinician to make a clinical decision.

TABLE 4 Results for analysis of the indeterminate results in stool samples that were resolved by TB-MBLA and Xpert ultra

Test ^a	No. (%) with indeterminate culture result ^b	No. (%) with indicated result in ^c :					
		TB-MBLA		Xpert ultra		Smear	
		Positive	Negative	Positive	Negative	Positive	Negative
MGIT culture	26 (26)	12 (46)	14 (54)	12 (46)	14 (54)	2 (8)	24 (92)
LJ culture	21 (21)	14 (67)	7 (33)	12 (57)	9 (43)	5 (24)	16 (76)

^aMGIT, mycobacterial growth indicator tube; LJ, Lowenstein-Jensen.

^bContaminated culture results that were neither positive nor negative.

^cTB-MBLA, tuberculosis molecular bacterial load assay; Xpert ultra, Xpert MTB/RIF ultra.

cultures were positive by both stool TB-MBLA and stool Xpert ultra. Considering the LJ stool cultures, 14 (67%) of the indeterminate samples were positive by stool TB-MBLA, while 12 (57%) were positive by stool Xpert ultra. Overall, indeterminate results that were resolved by stool TB-MBLA and stool Xpert ultra were concordant with MGIT sputum culture at 81% ($\kappa = 0.54$) and 85% ($\kappa = 0.73$), respectively, suggesting that they were true positives (Table 4). In contrast, we observed weak positivity and negativity concordance of the results that were resolved by stool smear and MGIT sputum culture, at 43% ($\kappa = 0.2$) and 62% ($\kappa = 0.2$), respectively, indicating the possibility of false positivity by stool smear microscopy.

Stool TB-MBLA-positive but sputum MGIT-negative participants. Eight patient stool samples were positive by TB-MBLA, but their corresponding MGIT sputum cultures were negative. Further analysis revealed that 6 of these 8 stool samples had at least one positive corresponding sputum test: 4 of them were positive by both sputum smear and sputum Xpert ultra and 2 were positive by only sputum smear but negative by sputum Xpert ultra. The remaining 2 stool samples were negative by all the investigated sputum tests.

Stool TB-MBLA-negative but sputum MGIT-positive participants. Twelve patient stool samples tested negative by TB-MBLA, but their corresponding MGIT sputum cultures were positive. Compared with the corresponding stool Xpert ultra-tested samples, 6 samples were negative, 5 were positive and detected as “low” ($n = 4$) and “trace” ($n = 1$), and 1 was invalid. The mean MGIT time to positivity (TTP) of the sputa that corresponded to the stool samples that were negative by both stool TB-MBLA and stool Xpert ultra was 11 days, indicating a moderately high bacillary load in sputa. The mean C_q value of the extraction control (\pm SD) in stool samples that were positive by stool TB-MBLA was 24.1 ± 1.9 , and for the negative stool samples, it was 24.1 ± 2.3 , not a significant difference ($P = 0.48$), potentially indicating absence of inhibition. Additionally, the average C_q value for 7/12 stool samples was 0, indicating the absence of any amplification by TB-MBLA, but 5 of the samples showed late amplification with an average C_q value of 32.8, well above the limit of detection of 30 C_q .

Time to positivity and C_q values. Overall, the mean MGIT TTP \pm SD of 12.3 ± 6.4 days in stool samples was higher than the 7.1 ± 3.1 days in sputum samples. Prior work on sputum TB-MBLA (25) showed a strong, direct correlation between C_q values and MGIT TTP. We thus investigated whether this was replicated in stool TB-MBLA and found that the mean C_q values for both stool TB-MBLA and stool Xpert ultra did not significantly correlate with the MGIT sputum TTP. Similarly, there was no significant relationship between C_q values and MGIT stool culture TTP (Fig. 4A and B).

DISCUSSION

Stool is an easy-to-obtain sample and could enhance TB diagnosis in individuals who cannot provide adequate sputum samples, and yet, MGIT culture, which is the current confirmatory test for TB, has low yields for stool. In this study, we assessed the ability of a molecular-based fully quantitative assay, the TB-MBLA, to detect and quantify viable *M. tuberculosis* bacilli in frozen stool samples.

We show that TB-MBLA for stool is sensitive and specific, signifying its potential utility for clinical decision making. Our results provide evidence for the presence of high bacillary loads in stool samples both in people living with HIV and those without, indicating its potential broad applicability in multiple settings. It is not clear whether the higher bacillary

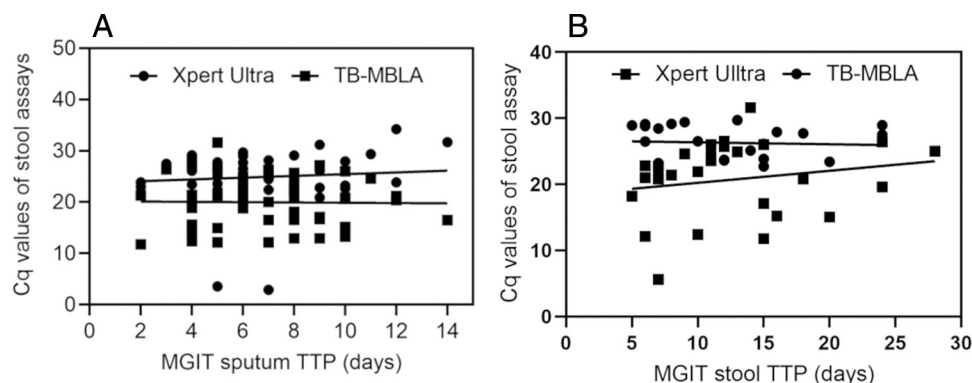


FIG 4 (A) Relationship between the C_q values of stool TB-MBLA or the C_q values of stool Xpert ultra and the MGIT sputum culture time to positivity (TTP) (days). The Spearman regression R^2 values were 0.000 and 0.13 for stool TB-MBLA and stool Xpert ultra, respectively. (B) Relationship between the C_q values of stool TB-MBLA or the C_q values of stool Xpert ultra and the MGIT stool culture TTP (days). The Spearman regression R^2 values were 0.02 and 0.04 for stool TB-MBLA and stool Xpert ultra, respectively. Overall, we did not find a significant correlation between C_q values and MGIT TTP.

loads observed in stool samples of HIV-positive patients are due to higher dissemination of bacilli from the respiratory tract to the gut. A larger-scale study would establish the robustness of this difference and what mechanisms underlie it.

Although TB-MBLA had significantly lower C_q values (potentially higher bacterial loads detected), Xpert ultra had higher sensitivity and specificity than TB-MBLA. The lower TB-MBLA C_q values could be explained by the fact that TB-MBLA detects the more abundant rRNA compared to the DNA detected by Xpert MTB/RIF. *Mycobacterium tuberculosis* has been shown to contain 700 ribosomes per cubic micrometer of cytoplasm, implying a larger amount of rRNA available for detection (32). Ideally, this would mean higher sensitivity of TB-MBLA than of Xpert ultra, but the reverse was true. One reason could be the use of multi-copy *M. tuberculosis* gene targets in Xpert ultra, enabling it to detect fewer bacilli in a sample and to have a lower limit of detection (33). Furthermore, unlike Xpert ultra, specimen processing for TB-MBLA, particularly the initial centrifugation step to harvest *M. tuberculosis* cells from sputum, has been shown to cause a substantial loss of viable *M. tuberculosis* bacilli, which do not easily sediment, and consequently reduces assay sensitivity (34). Third, loss of *M. tuberculosis* cell viability due to prolonged storage at -20°C may have compromised the sensitivity of TB-MBLA.

In principle, there should be a correlation between rRNA and DNA detected in the same cell. However, our analysis showed a nonsignificant correlation between stool TB-MBLA and Xpert ultra C_q values. This requires further analysis in a large-scale study ensuring all analyses are done on freshly collected samples to eliminate the confounder of loss of viability caused by storage conditions. Second, the average C_q value for Xpert MTB/RIF should be derived from probes that detect *M. tuberculosis* DNA and not those of the non-TB internal controls of the assay.

Overall, our results concur with findings from other studies where molecular assays were shown to have higher diagnostic accuracy than stool culture assays when MGIT sputum culture was used as the reference test (35, 36). The low diagnostic accuracy of stool culture may partly be attributed to overgrowth of non-*M. tuberculosis* flora due to the rich microbial population in the gut, while loss of *M. tuberculosis* viability during transition in the gut is plausible but requires further investigation, since substantial numbers of the contaminated stool cultures were detected as *M. tuberculosis* positive by TB-MBLA, which is known to detect viable *M. tuberculosis* bacilli. *M. tuberculosis* growth inhibition and/or reduction of viable bacillary load due to the killing effect of the decontamination methods could be a factor in reducing the productivity of culture and further highlights the importance of sample processing methods (26).

In this study, stool samples were processed using OMNIgene-sputum (OM-S) reagent. OM-S suppresses contaminants, but it delays MGIT sputum time to culture positivity

(TTP) (37, 38). It is plausible that the same effect occurred in our stool samples; hence the absence of correlation between MGIT TTP and the C_q values of the molecular tests. Other studies have shown inverse correlation of MGIT TTP and C_q values (24, 27, 39).

We noted that 12 samples from PTB cases confirmed by MGIT sputum culture were not amplified by stool TB-MBLA. Whether this was due to inhibition could not be ascertained, because the spiked extraction control was efficiently recovered, as demonstrated by quantitative PCR (qPCR) amplification. However, we hypothesize that loss of *M. tuberculosis* viability during stool storage at -20°C , compounded by some loss of RNA during extraction, may have led to nondetection by TB-MBLA (34).

We also observed that in 5 of the 12 TB-MBLA-negative samples, the Xpert ultra positivity results were low/trace, implying that there were few bacilli in the samples prior to storage at -20°C . Some stool samples showed late amplification, and these reported as negative based on the cutoff value of 30. Whether the C_q cutoff of 30 wrongly placed these samples in the "TB-negative" category could not be ascertained. Future studies need to investigate the C_q cutoff value for stool.

Using molecular-based assays for stool has the potential to increase TB case detection in both adults and children, because they use *M. tuberculosis*-specific primers and probes that are not affected by non-*M. tuberculosis* flora present in stool. In this study, we show that 26% of the tested stool samples were contaminated (grew non-TB flora) on MGIT stool culture and 21% on LJ stool culture. All contaminated culture samples had a definitive (positive or negative) result by TB-MBLA. To confirm the validity of these results, the percentages of agreement with the reference standard test were calculated and found to range between 81 and 85%, implying that over 80% of the resolved results were valid and could be used to inform clinical decision making. Unlike Xpert ultra, which may detect nonviable *M. tuberculosis* bacilli due to persistent DNA after cell death, TB-MBLA has been shown to be sensitive to agents that reduce cell viability (30, 40).

The RNA extraction part of TB-MBLA is manual and takes a substantial amount of hands-on time and, thus, would benefit from automation of the process to increase its ease of implementation in the clinical laboratory setting. It is important to note that even in its current form, TB-MBLA is more rapid than culture. Shortening the TB-MBLA protocol will increase its potential for real-time application in the real-time clinical setting.

Diagnosis in children and immunocompromised individuals is difficult, usually depending on the unreliable clinical symptoms. Using stool samples and TB-MBLA could improve the confidence of clinicians in deciding to initiate or withhold treatment. Placing patients on an appropriate treatment early enough minimizes the risk of TB transmission and associated mortality. Smear microscopy is the fastest and the most accessible test, making it the most common TB diagnostic in resource-constrained settings (41). However, as in sputum (42), we noted that its sensitivity in stool was lower than that of molecular tests and that it might not give reliable yields if performed for a sample that had less than 10,000 bacilli/mL, as also reported elsewhere (43, 44). The detection of substantial bacillary loads in both HIV-negative and -positive stool samples is a testament to the sensitivity of stool as a sample type and makes it worth considering among sample types for primary diagnosis of TB. Further studies should investigate the mechanism underlying the higher bacillary loads in HIV-positive than in HIV-negative patients.

Using stool samples might provide an easier way to enhance diagnosis of gastrointestinal TB. Gastrointestinal TB is a life-threatening form of TB that control programs have not accorded due attention, perhaps because it is less transmissible and is challenging to diagnose (45). We noted that TB-MBLA detected and quantified *M. tuberculosis* in 8 stool samples among the MGIT sputum-negative participants, 2 of which did not have any corresponding positive sputum test. Whether these cases represented gastrointestinal TB or not could not be ascertained in this study because we lacked data about the relevant descriptors, such as colitis symptoms and Bristol stool chart scales. Future evaluations to unravel the use of stool specimens to diagnose gastrointestinal TB are urgently necessary.

Limitations. The main limitations of this study are the small sample size and the use of stored samples for TB-MBLA. Storing samples at -20°C for 18 months could have

degraded some rRNA, hence lowering the sensitivity of TB-MBLA. Nevertheless, we demonstrate the ability of TB-MBLA to detect and quantify *M. tuberculosis* in stool with a high level of accuracy, indicating its potential role in enabling clinical decision making. Besides, TB-MBLA is rapid and will enable rapid detection and quantification of *M. tuberculosis* in clinical specimens. Molecular testing of stool may facilitate TB diagnosis in patients unable to produce sputum and in screening of high-risk groups.

Future studies will explore the diagnostic accuracy and treatment response monitoring utility of TB-MBLA in a larger sample size of fresh stool samples from patients who are unable to provide sputum, including children. These investigations will benefit from modifying the current sample-processing methods to make it shorter and also to minimize the loss of bacilli caused by centrifugation steps. Future studies will also explore the role of TB-MBLA for revealing the mycobactericidal effect of TB regimens in patient populations where sputum production is often problematic, including children.

MATERIALS AND METHODS

Ethics. The parent and current studies were approved by the Makerere University School of Medicine Research and Ethics Committee (REC reference no. 2006-017) and the Makerere University School of Biomedical Sciences Research and Ethics Committee (REC reference no. SBS 529), respectively. All patients consented to the use of their stored stool samples and data for future TB investigations. Good clinical practice guidelines were observed (46).

Study site and design. We conducted a cross-sectional, laboratory-based study utilizing banked stool samples collected between 2018 and 2019. The study was nested in a cohort of persons with pneumonia (47–49) at Naguru Referral Hospital, Kampala, Uganda.

Specimen collection and processing. At enrollment, participants provided spot stool (~12.0 g) in a prelabeled sterile wide-mouthed container (Sarstedt, Australia). Six grams of each stool sample was homogenized and incubated at ambient temperature in OMNIgene-sputum reagent (OM-S; DNA Genotek, Inc., Ottawa, Canada) for 10 min. OM-S reagent decontaminates TB samples while preserving *M. tuberculosis* viability (50). The resulting suspension was pelleted twice in OM-S at $3,000 \times g$, for 20 and 10 min, respectively. The resulting pellet was resuspended in 6 mL of phosphate-buffered saline before being aliquoted into four different portions of 1 mL each to be tested by auramine O smear microscopy (smear), Xpert MTB/RIF ultra (Xpert ultra), MGIT, and LJ cultures. The remaining portions were banked at -20°C and tested by TB-MBLA in a batch on all specimens at once. OM-S reagent is compatible with TB molecular assays, smear, and solid and liquid culture tests (51, 52). In addition to stool samples, sputum samples were collected and tested on the same day using MGIT sputum culture and Xpert ultra. We note that sputa were not processed in OM-S but, rather, decontaminated using 2% NaOH/*N*-acetyl L-cysteine.

Selection of banked stool samples. By the time of this study, there were 600 stored stool samples, 597 of which had a valid corresponding MGIT sputum culture result as the reference comparator and all of which had valid Xpert results on sputum as the standard-of-care test. A systematic random sampling selection method (52) was conducted to obtain 100 archived stool samples. A sampling interval was calculated as the ratio of total banked stool samples to the target sample size. Samples without matching clinical data, sputum Xpert ultra, and MGIT sputum culture results were excluded. We note that selection of the samples was not based on any stool-related results.

TB-MBLA. Total RNA was extracted by adopting a method described elsewhere (24, 25, 27). Homogenized stool samples (1 mL) were thawed at ambient temperature, spiked with 100 μl of the extraction control, and then centrifuged for 15 min at $3,000 \times g$. RNA was isolated using the Fast Prep RNA pro blue kit (MP Biomedicals, Santa Ana, CA, USA). Duplex reverse transcriptase qPCR targeting both *Mycobacterium tuberculosis* and the extraction control was performed on a Rotor-Gene 5plex platform (Qiagen, Manchester, UK). Primers and TaqMan dually labeled probes were manufactured by MWG Eurofins, Germany. qPCR cycling conditions were as reported by Honeyborne et al. (24). Quantification cycle (C_q) values were converted to bacterial loads using a standard curve customized for the site's qPCR platform and recorded as estimated CFU per mL (eCFU/mL) (25). The standard curve was constructed using *M. tuberculosis* rRNA that was extracted from *M. tuberculosis* culture of a known concentration (CFU/mL). Stool samples without C_q values and those with C_q values above 30 were reported as TB negative.

Stool Xpert ultra. One milliliter of the homogenized stool was mixed with 2 mL of the sample reagent buffer and tested according to the Cepheid protocol. The same Xpert ultra machine was used for all the samples. Results were automatically generated in the categories negative, trace call, very low, low, medium, or high MTB (*M. tuberculosis*) positive by the Xpert ultra platform.

Smear microscopy. One milliliter of the homogenized stool was sedimented, and a smear (1 to 2 cm) was prepared and air dried. The dried smear was stained for 15 min using a 0.5% solution of auramine O (Merck, Darmstadt, Germany), decolorized for 2 min in 3% acid alcohol, and counter stained for 1 min using 0.5% potassium permanganate solution. Smears were examined within 1 h under a fluorescence microscope at $\times 400$ magnification.

Liquid and solid cultures. MGIT tubes were inoculated with 500 μL of the homogenized stool samples and incubated at 37°C for a maximum of 42 days. LJ slants were inoculated with 200 μL of the resuspended stool sediments and incubated at 37°C for a maximum of 56 days. TB-positive cultures were confirmed by the presence of acid-fast bacilli upon Ziehl-Neelsen staining and the presence of antigen MPT64. The absence

of acid-fast-bacillus cording and growth on blood agar was recorded as contamination. Results were reported according to International Union Against Tuberculosis and Lung Disease guidelines (53). Contaminated cultures with no definitive positive or negative result for TB were categorized as indeterminate. We note that similar MGIT and LJ culture protocols were followed.

Statistical analyses. Differences in baseline clinical characteristics were compared using Fisher's exact test and Mann-Whitney U test for categorical and continuous variables, respectively. All bacterial load results (eCFU/mL) were log transformed before statistical analyses. Negative, positive, and overall (kappa scores) percentages of concordance between tests and MGIT sputum cultures were calculated using STATA version 15.1 (StataCorp, College Station, TX, USA). Sensitivity and specificity were calculated at the 95% confidence interval by using STATA version 15.1, using sputum MGIT culture as the reference test as was reported elsewhere (54). A sensitivity analysis method was used in calculation of specificity and sensitivity to minimize the interpretation bias due to contamination (54). Statistical significance was considered to be shown at a probability value of less than 0.05. Contaminated stool culture results could not be interpreted as either positive or negative. The status of these results was assessed for positivity or negativity using stool TB-MBLA, stool Xpert ultra, and stool smear, and thereafter, we categorized them as "resolved." To ascertain whether the status of the "resolved" result was valid, we investigated the agreement with the corresponding MGIT sputum culture using kappa statistics.

ACKNOWLEDGMENTS

Emmanuel Musisi's doctoral research was supported by a European and Developing Countries Clinical Trial Partnership (EDCTP)-funded PanACEA II studentship (grant number TR1A2015-1102) and the University of St Andrews St Leonards scholarship. Funding from the Infectious Diseases Institute, Makerere University, to Emmanuel Musisi and Abdul Sessolo through the Health and Innovation Impact project supported collection of specimens. Enrollment was funded by Lung MicroCHIP (NIH grant number U01 HL098964) and K24 (NIH grant number K24 HL087713) grants through Laurence Huang. Funding from the Scottish Funding Council (SCF)-Global Challenges Research Fund (GCRF) supported the TB-MBLA processing of the samples.

Great thanks to the participants who gave their samples for research.

REFERENCES

1. WHO. 2021. Global tuberculosis report 2021. World Health Organization, Geneva, Switzerland.
2. Zumla A, Chakaya J, Khan M, Fatima R, Wejse C, Al-Abri S, Fox GJ, Nachega J, Kapata NKMM, Orcutt L, Goscé J, Abubakar TJ, Nagu F, Mugusi AK, Gordon S, Shanmugam NL, Bachmann C, Lam Vitali S, Rudolf F, Amanullah R, Kock N, Haider M, Lipman M, King M, Mæurer D, Goletti L, Petrone A, Yaqoob S, Tiberi L, Ditiu S, Sahu B, Marais AM, Issayeva E, Petersen. 2021. World Tuberculosis Day 2021 Theme—"The Clock is Ticking"—and the world is running out of time to deliver the United Nations General Assembly commitments to End TB due to the COVID-19 pandemic. *Int J Infect Dis* 113(Suppl 1):S1–S6. <https://doi.org/10.1016/j.ijid.2021.03.046>.
3. Oberhelman RA, Soto-Castellares G, Caviedes L, Castillo ME, Kissinger P, Moore DAJ, Evans C, Gilman RH. 2006. Improved recovery of Mycobacterium tuberculosis from children using the microscopic observation drug susceptibility method. *Pediatrics* 118:e100–e106. <https://doi.org/10.1542/peds.2005-2623>.
4. Andresen D. 2007. Microbiological diagnostic procedures in respiratory infections: mycobacterial infections. *Paediatr Respir Rev* 8:221–230. <https://doi.org/10.1016/j.prrv.2007.07.002>.
5. Dodd PJ, Yuen CM, Sismanidis C, Seddon JA, Jenkins HE. 2017. The global burden of tuberculosis mortality in children: a mathematical modelling study. *Lancet Glob Health* 5:e898–e906. [https://doi.org/10.1016/S2214-109X\(17\)30289-9](https://doi.org/10.1016/S2214-109X(17)30289-9).
6. Vargas D, García L, Gilman RH, Evans C, Ticona E, Ñavincopa M, Luo RF, Caviedes L, Hong C, Escombe R, Moore DA. 2005. Diagnosis of sputum-scarce HIV-associated pulmonary tuberculosis in Lima, Peru. *Lancet* 365:150–152. [https://doi.org/10.1016/S0140-6736\(05\)17705-8](https://doi.org/10.1016/S0140-6736(05)17705-8).
7. Chierakul N, Anantasetagoon T, Chairasert A, Tingtoy N. 2003. Diagnostic value of gastric aspirate smear and polymerase chain reaction in smear-negative pulmonary tuberculosis. *Respirology* 8:492–496. <https://doi.org/10.1046/j.1440-1843.2003.00503.x>.
8. Owens S, Abdel-Rahman IE, Balyejusa S, Musoke P, Cooke R, Parry CM, Coulter JBS. 2007. Nasopharyngeal aspiration for diagnosis of pulmonary tuberculosis. *Arch Dis Child* 92:693–696. <https://doi.org/10.1136/adc.2006.108308>.
9. Ding H, Ma Y, Rao X, Jiao A, Liu X. 2008. The role of flexible bronchoscopy in pediatric pulmonary tuberculosis. *J Trop Pediatr* 54:423. <https://doi.org/10.1093/tropej/fmn056>.
10. Marais B, Hesselning A, Gie R, Schaaf H, Enarson D, Beyers N. 2006. The bacteriologic yield in children with intrathoracic tuberculosis. *Clin Infect Dis* 42:e69–e71. <https://doi.org/10.1086/502652>.
11. Walters E, Scott L, Nabeta P, Demers A-M, Reubenson G, Bosch C, David A, van der Zalm M, Havumaki J, Palmer M, Hesselning AC, Ncayiyana J, Stevens W, Alland D, Denkinger C, Banada P. 2018. Molecular detection of Mycobacterium tuberculosis from stools in young children by use of a novel centrifugation-free processing method. *J Clin Microbiol* 56:e00781–18. <https://doi.org/10.1128/JCM.00781-18>.
12. Rahman SM, Maliha UT, Ahmed S, Kabir S, Khatun R, Shah JA, Banu S. 2018. Evaluation of Xpert MTB/RIF assay for detection of Mycobacterium tuberculosis in stool samples of adults with pulmonary tuberculosis. *PLoS One* 13:e0203063. <https://doi.org/10.1371/journal.pone.0203063>.
13. Mesman AW, Soto M, Coit J, Calderon R, Aliaga J, Pollock NR, Mendoza M, Mestanza FM, Mendoza CJ, Murray MB, Lecca L, Holmberg R, Franke MF. 2019. Detection of Mycobacterium tuberculosis in pediatric stool samples using TruTip technology. *BMC Infect Dis* 19:563. <https://doi.org/10.1186/s12879-019-4188-8>.
14. Orikiriza P, Nansumba M, Nyehangane D, Bastard M, Mugisha IT, Nansera D, Mwangi-Amumpaire J, Boum Y, Kumbakumba E, Bonnet M. 2018. Xpert MTB/RIF diagnosis of childhood tuberculosis from sputum and stool samples in a high TB-HIV-prevalent setting. *Eur J Clin Microbiol Infect Dis* 37:1465–1473. <https://doi.org/10.1007/s10096-018-3272-0>.
15. Banada PP, Naidoo U, Deshpande S, Karim F, Flynn JL, O'Malley M, Jones M, Nanassy O, Jeena P, Alland D. 2016. A novel sample processing method for rapid detection of tuberculosis in the stool of pediatric patients using the Xpert MTB/RIF assay. *PLoS One* 11:e0151980. <https://doi.org/10.1371/journal.pone.0151980>.
16. Nicol MP, Spiers K, Workman L, Isaacs W, Munro J, Black F, Zemanay W, Zar HJ. 2013. Xpert MTB/RIF testing of stool samples for the diagnosis of pulmonary tuberculosis in children. *Clin Infect Dis* 57:e18–e21. <https://doi.org/10.1093/cid/cit230>.
17. Chipinduro M, Mateveke K, Makamure B, Ferrand R, Gomo E. 2017. Stool Xpert MTB/RIF test for the diagnosis of childhood pulmonary tuberculosis at primary clinics in Zimbabwe. *Int J Tuberc Lung Dis* 21:161–166. <https://doi.org/10.5588/ijtld.16.0357>.
18. Walters E, Gie RP, Hesselning AC, Friedrich SO, Diacon AH, Gie RP. 2012. Rapid diagnosis of pediatric intrathoracic tuberculosis from stool samples

- using the Xpert MTB/RIF assay: a pilot study. *Pediatr Infect Dis J* 31:1316. <https://doi.org/10.1097/INF.0b013e318266c21c>.
19. Hasan Z, Shakoor S, Arif F, Mehnaz A, Akber A, Haider M, Kanji A, Hasan R. 2017. Evaluation of Xpert MTB/RIF testing for rapid diagnosis of childhood pulmonary tuberculosis in children by Xpert MTB/RIF testing of stool samples in a low resource setting. *BMC Res Notes* 10:1–6. <https://doi.org/10.1186/s13104-017-2806-3>.
 20. DiNardo AR, Kay AW, Maphalala G, Harris NM, Fung C, Mtetwa G, Ustero P, Dlamini S, Ha N, Graviss EA, Mejia R, Mandalakas AM. 2018. Diagnostic and treatment monitoring potential of a stool-based quantitative polymerase chain reaction assay for pulmonary tuberculosis. *Am J Trop Med Hyg* 99:310–316. <https://doi.org/10.4269/ajtmh.18-0004>.
 21. Gonzalo-Asensio J, Pérez I, Aguiló N, Uranga S, Picó A, Lampreave C, Cebollada A, Otal I, Samper S, Martin C. 2018. New insights into the transposition mechanisms of IS 6110 and its dynamic distribution between Mycobacterium tuberculosis complex lineages. *PLoS Genet* 14:e1007282. <https://doi.org/10.1371/journal.pgen.1007282>.
 22. Arend SM, van Soolingen D. 2018. Performance of Xpert MTB/RIF ultra: a matter of dead or alive. *Lancet Infect Dis* 18:8–10. [https://doi.org/10.1016/S1473-3099\(17\)30695-3](https://doi.org/10.1016/S1473-3099(17)30695-3).
 23. Walters E, Demers A-M, Van der Zalm MM, Whitelaw A, Palmer M, Bosch C, Draper HR, Gie RP, Hesselning AC. 2017. Stool culture for diagnosis of pulmonary tuberculosis in children. *J Clin Microbiol* 55:3355–3365. <https://doi.org/10.1128/JCM.00801-17>.
 24. Honeyborne I, McHugh TD, Phillips PPJ, Bannoo S, Bateson A, Carroll N, Perrin FM, Ronacher K, Wright L, van Helden PD, Walzl G, Gillespie SH. 2011. Molecular bacterial load assay, a culture-free biomarker for rapid and accurate quantification of sputum Mycobacterium tuberculosis bacillary load during treatment. *J Clin Microbiol* 49:3905–3911. <https://doi.org/10.1128/JCM.00547-11>.
 25. Gillespie SH, Sabiiti W, Oravcova K. 2017. Mycobacterial load assay. *Methods Mol Biol* 1616:89–105. https://doi.org/10.1007/978-1-4939-7037-7_5.
 26. Mtafya B, Sabiiti W, Sabi I, John J, Sichone E, Ntinginya NE, Gillespie HS. 2019. Molecular bacterial load assay concurs with culture on NaOH-induced loss of Mycobacterium tuberculosis viability. *J Clin Microbiol* 57:e01992-18. <https://doi.org/10.1128/JCM.01992-18>.
 27. Honeyborne I, Mtafya B, Phillips PP, Hoelscher M, Ntinginya E, Kohlenberg A, Rachow A, Rojas-Ponce G, McHugh TD, Heinrich N, Pan African Consortium for the Evaluation of Anti-tuberculosis Antibiotics. 2014. The molecular bacterial load assay replaces solid culture for measuring early bactericidal response to antituberculosis treatment. *J Clin Microbiol* 52:3064–3067. <https://doi.org/10.1128/JCM.01128-14>.
 28. Sabiiti W, Azam K, Kuchaka D, Mtafya B, Bowness R, Oravcova K, Farmer ECW, Honeyborne I, Evangelopoulos D, McHugh TD, Xiao H, Khosa C, Rachow A, Heinrich N, Kampira E, Davies G, Bhatt N, Ntinginya NE, Viegas S, Jani I, Kamdolozi M, Mdolo A, Khonga M, Boeree MJ, Phillips PPJ, Sloan DJ, Hoelscher M, Kibiki GS, Gillespie SH. 2019. Improving diagnosis and monitoring of treatment response in pulmonary tuberculosis using the molecular bacterial load assay (MBLA). *bioRxiv*. <https://doi.org/10.1101/555995>.
 29. Mbelele PM, Mpolya EA, Sauli E, Mtafya B, Ntinginya NE, Addo KK, Kreppel K, Mfinanga S, Phillips PPJ, Gillespie SH, Heysell SK, Sabiiti W, Mpagama SG. 2021. Mycobactericidal effects of different regimens measured by molecular bacterial load assay among people treated for multidrug-resistant tuberculosis in Tanzania. *J Clin Microbiol* 59:e02927-20. <https://doi.org/10.1128/JCM.02927-20>.
 30. Sabiiti W, Azam K, Farmer E, Kuchaka D, Mtafya B, Bowness R, Oravcova K, Honeyborne I, Evangelopoulos D, McHugh TD, Khosa C, Rachow A, Heinrich N, Kampira E, Davies G, Bhatt N, Ntinginya NE, Viegas S, Ilesh Jani L, Kamdolozi M, Mdolo A, Khonga M, Boeree MJ, Phillips PPJ, Sloan D, Hoelscher M, Kibiki G, Gillespie SH. 2020. Tuberculosis bacillary load, an early marker of disease severity and treatment response: the utility of tuberculosis molecular bacterial load assay. *Thorax* 75:606–608. <https://doi.org/10.1136/thoraxjnl-2019-214238>.
 31. Claudon M, Cosgrove D, Albrecht T, Bolondi L, Bosio M, Calliada F, Correas J-M, Darge K, Dietrich C, D'Onofrio M, Evans DH, Filice C, Greiner L, Jäger K, Jong ND, Leen E, Lencioni R, Lindsell D, Martegani A, Meairs S, Nolsøe C, Piscaglia F, Ricci P, Seidel G, Skjoldbye B, Solbiati L, Thorelius L, Tranquart F, Weskott HP, Whittingham T. 2008. Guidelines and good clinical practice recommendations for contrast enhanced ultrasound (CEUS)—update 2008. *Ultraschall Med* 29:28–44. <https://doi.org/10.1055/s-2007-963785>.
 32. Yamada H, Yamaguchi M, Chikamatsu K, Aono A, Mitarai S. 2015. Structure analysis of virulent Mycobacterium tuberculosis, which survives with only 700 ribosomes per 0.1 fl of cytoplasm. *PLoS One* 10:e0117109. <https://doi.org/10.1371/journal.pone.0117109>.
 33. Dorman SE, Schumacher SG, Alland D, Nabeta P, Armstrong DT, King B, Hall SL, Chakravorty S, Cirillo DM, Tukvadze N, Blishvili N, Stevens W, Scott L, Rodrigues C, Kazi MI, Joloba M, Nakiyingi L, Nicol MP, Ghebrekristos Y, Anyango I, Murithi W, Dietze R, Lyrio Peres R, Skrahina A, Auchynka V, Chopra KK, Hanif M, Liu X, Yuan X, Boehme CC, Ellner JJ, Denkinger CM, study team. 2018. Xpert MTB/RIF Ultra for detection of Mycobacterium tuberculosis and rifampicin resistance: a prospective multicentre diagnostic accuracy study. *Lancet Infect Dis* 18:76–84. [https://doi.org/10.1016/S1473-3099\(17\)30691-6](https://doi.org/10.1016/S1473-3099(17)30691-6).
 34. Kennedy JA, Baron VO, Hammond RJ, Sloan DJ, Gillespie SH. 2018. Centrifugation and decontamination procedures selectively impair recovery of important populations in Mycobacterium smegmatis. *Tuberculosis (Edinb)* 112:79–82. <https://doi.org/10.1016/j.tube.2018.07.008>.
 35. Gaur M, Singh A, Sharma V, Tandon G, Bothra A, Vasudeva A, Kedia S, Khanna A, Khanna V, Lohiya S, Varma-Basil M, Chaudhry A, Misra R, Singh Y. 2020. Diagnostic performance of non-invasive, stool-based molecular assays in patients with paucibacillary tuberculosis. *Sci Rep* 10:1–8. <https://doi.org/10.1038/s41598-020-63901-z>.
 36. DiNardo AR, Detjen A, Ustero P, Ngo K, Bacha J, Mandalakas AM. 2016. Culture is an imperfect and heterogeneous reference standard in pediatric tuberculosis. *Tuberculosis* 101:S105–S108. <https://doi.org/10.1016/j.tube.2016.09.021>.
 37. Kelly-Cirino CD, Musisi E, Byanyima P, Kaswabuli S, Andama A, Sessolo A, Sanyu I, Zawedde J, Curry PS, Huang L. 2017. Investigation of OMNIgene•SPUTUM performance in delayed tuberculosis testing by smear, culture, and Xpert MTB/RIF assays in Uganda. *J Epidemiol Glob Health* 7:103–109. <https://doi.org/10.1016/j.jegh.2017.04.001>.
 38. Azam K, Cadir N, Madeira C, Gillespie SH, Sabiiti W. 2018. OMNIgene•SPUTUM suppresses contaminants while maintaining Mycobacterium tuberculosis viability and obviates cold-chain transport. *ERJ Open Res* 4:00074-2017. <https://doi.org/10.1183/23120541.00074-2017>.
 39. Sabiiti W, Ntinginya N, Kuchaka D, Azam K, Kampira E, Mtafya B, Bowness R, Bhatt N, Davies G, Kibiki G, Gillespie S. 2017. Molecular bacterial load assay: a fast and accurate means for monitoring tuberculosis treatment response. *BMJ Glob Health* 2:A8. <https://doi.org/10.1136/bmjgh-2016-000260.16>.
 40. Friedrich SO, Rachow A, Saathoff E, Singh K, Mangu CD, Dawson R, Phillips PP, Venter A, Bateson A, Boehme CC, Heinrich N, Hunt RD, Boeree MJ, Zumla A, McHugh TD, Gillespie SH, Diacon AH, Hoelscher M. 2013. Assessment of the sensitivity and specificity of Xpert MTB/RIF assay as an early sputum biomarker of response to tuberculosis treatment. *Lancet Respir Med* 1:462–470. [https://doi.org/10.1016/S2213-2600\(13\)70119-X](https://doi.org/10.1016/S2213-2600(13)70119-X).
 41. Siddiqi K, Lambert M-L, Walley J. 2003. Clinical diagnosis of smear-negative pulmonary tuberculosis in low-income countries: the current evidence. *Lancet Infect Dis* 3:288–296. [https://doi.org/10.1016/S1473-3099\(03\)00609-1](https://doi.org/10.1016/S1473-3099(03)00609-1).
 42. Perkins MD. 2000. New diagnostic tools for tuberculosis [The Eddie O'Brien Lecture]. *Int J Tuberc Lung Dis* 4:S182–S188.
 43. Luelmo F. 2004. What is the role of sputum microscopy in patients attending health facilities, p 7–10. In Frieden T (ed), *Toman's tuberculosis: case detection, treatment, and monitoring—questions and answers*. World Health Organization, Geneva, Switzerland.
 44. Ohene S-A, Bakker MI, Ojo J, Toonstra A, Awudi D, Klatser P. 2019. Extra-pulmonary tuberculosis: a retrospective study of patients in Accra. *PLoS One* 14:e0209650. <https://doi.org/10.1371/journal.pone.0209650>.
 45. Ha HK, Ko GY, Yu ES, Yoon K, Hong WS, Kim HR, Jung HY, Yang SK, Jee KN, Min YI, Auh YH. 1999. Intestinal tuberculosis with abdominal complications: radiologic and pathologic features. *Abdom Imaging* 24:32–38. <https://doi.org/10.1007/s002619900436>.
 46. Musisi E, Matovu DK, Bukenya A, Kaswabuli S, Zawedde J, Andama A, Byanyima P, Sanyu I, Sessolo A, Seremba E, Davis JL, Worodria W, Huang L, Walter ND, Mayanja-Kizza H. 2018. Effect of anti-retroviral therapy on oxidative stress in hospitalized HIV-infected adults with and without TB. *Afr Health Sci* 18:512–522. <https://doi.org/10.4314/ahs.v18i3.7>.
 47. Wang RJ, Moore J, Moisi D, Chang EG, Byanyima P, Kaswabuli S, Musisi E, Sanyu I, Sessolo A, Lalitha R, Worodria W, Davis JL, Crothers K, Lin J, Lederman MM, Hunt PW, Huang L. 2019. HIV infection is associated with elevated biomarkers of immune activation in Ugandan adults with pneumonia. *PLoS One* 14:e0216680. <https://doi.org/10.1371/journal.pone.0216680>.
 48. Davis JL, Worodria W, Kisembo H, Metcalfe JZ, Cattamanchi A, Kawooya M, Kyeyune R, den Boon S, Powel K, Okello R, Yoo S, Huang L. 2010. Clinical and radiographic factors do not accurately diagnose smear-negative tuberculosis in HIV-infected inpatients in Uganda: a cross-sectional study. *PLoS One* 5:e9859. <https://doi.org/10.1371/journal.pone.0009859>.
 49. Maharjan B, Shrestha B, Weirich A, Stewart A, Kelly-Cirino CD. 2016. A novel sputum transport solution eliminates cold chain and supports routine

- tuberculosis testing in Nepal. *J Epidemiol Glob Health* 6:257–265. <https://doi.org/10.1016/j.jegh.2016.04.002>.
50. Niles J, Ray B, Curry P, Kelly-Cirino CD. 2016. Compatibility of OMNIgene®•SPUTUM and prepiT®•MAX with molecular assays for tuberculosis: real-time PCR and Hain Lifescience GenoType MTBC line probe assay. DNA Genotek whitepaper PD-WP-00051. DNA Genotek, Inc., Ottawa, Canada.
51. Kelly-Cirino CD, Curry PS, Marola JL, Helstrom NK, Salfinger M. 2016. Novel multi-day sputum transport reagent works with routine tuberculosis tests and eliminates need for cold chain: preliminary study of compatibility with the Xpert® MTB/RIF assay. *Diagn Microbiol Infect Dis* 86:273–276. <https://doi.org/10.1016/j.diagmicrobio.2016.08.013>.
52. Bellhouse D. 2014. Systematic sampling methods. *In* Wiley StatsRef: Statistics Reference Online. John Wiley & Sons, Hoboken, NJ.
53. Rieder H, Van Deun A, Kam KM, Kim SJ, Chonde T, Trébuçq A, Urbanczik R. 2007. Priorities for tuberculosis bacteriology services in low-income countries, 2nd ed. International Union Against Tuberculosis and Lung Disease, Paris, France.
54. Schuetz GM, Schlattmann P, Dewey M. 2012. Use of 3×2 tables with an intention to diagnose approach to assess clinical performance of diagnostic tests: meta-analytical evaluation of coronary CT angiography studies. *BMJ* 345:e6717. <https://doi.org/10.1136/bmj.e6717>.