

# UC Davis

## UC Davis Previously Published Works

### Title

Negative effects of density on space use of small mammals differ with the phase of the masting-induced population cycle

### Permalink

<https://escholarship.org/uc/item/5ks1k8f4>

### Journal

Ecology and Evolution, 6(23)

### ISSN

2045-7758

### Authors

Bogdziewicz, Michał  
Zwolak, Rafał  
Redosh, Lauren  
et al.

### Publication Date

2016-12-01

### DOI

10.1002/ece3.2513

Peer reviewed

# Negative effects of density on space use of small mammals differ with the phase of the masting-induced population cycle

Michał Bogdziewicz<sup>1</sup> | Rafał Zwolak<sup>1</sup> | Lauren Redosh<sup>2</sup> | Leszek Rychlik<sup>1</sup> | Elizabeth E. Crone<sup>2</sup>

<sup>1</sup>Department of Systematic Zoology, Faculty of Biology, Adam Mickiewicz University, Poznań, Poland

<sup>2</sup>Department of Biology, Tufts University, Medford, MA, USA

## Correspondence

Michał Bogdziewicz, Department of Systematic Zoology, Faculty of Biology, Adam Mickiewicz University, Poznań, Poland.  
Email: micbog@amu.edu.pl

## Funding information

Polish Ministry of Science and Higher Education, Grant/Award Number: NN304391537; Polish National Science Centre, Grant/Award Number: 2012/04/M/NZ8/00674; National Science Centre, Grant/Award Number: 2015/16/T/NZ8/00018

## Abstract

Home range size generally decreases with increasing population density, but testing how this relationship is influenced by other factors (e.g., food availability, kin structure) is a difficult task. We used spatially explicit capture–recapture models to examine how home range size varies with population density in the yellow-necked mouse (*Apodemus flavicollis*). The relationship between population density and home range size was studied at two distinct phases of population fluctuations induced by beech (*Fagus sylvatica*) masting: post-mast peak in abundance (first summer after mast,  $n = 2$ ) and subsequent crash (second summer after mast,  $n = 2$ ). We live-trapped mice from June to September to avoid the confounding effects of autumn seedfall on home range size. In accordance with general predictions, we found that home range size was negatively associated with population density. However, after controlling for the effect of density, home ranges of mice were larger in post-mast years than during the crash phase. This indicates a higher spatial overlap among neighbors in post-mast years. We suggest that the increased spatial overlap is caused by negative density-dependent dispersal that leads to high relatedness of individuals within population in the peak phase of the cycle.

## KEYWORDS

density dependence, home range, mast seeding, population cycles, space use, spatially explicit capture recapture

## 1 | INTRODUCTION

Space use (home range) allows an animal to access resources necessary to ensure its survival and reproduction (Burt, 1943; Ostfeld, 1990), influences gene flow and interactions with other species, and thus is considered an important feature regulating population dynamics (Adams, 2001; Andreassen, Glorvigen, Rémy, & Ims, 2013; Lambin & Yoccoz, 1998; Schmidt & Ostfeld, 2003). Several factors, including population density, food availability, sex, predation, and kin structure, jointly influence individual spacing behavior (Boutin, 1990; Desy, Batzli, & Liu, 1990; Godsall, Coulson, & Malo, 2014; Kawata, 1990; McLoughlin & Ferguson, 2000; Schoepf, Schmohl, König, Pillay, & Schradin, 2015).

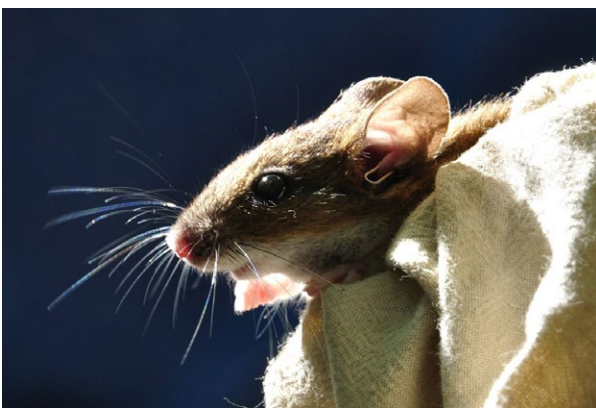
Population density is believed to be the primary determinant of animal space use, with home range area generally decreasing with increasing density (Adams, 2001; Efford, Dawson, Jhala, & Qureshi, 2016). Nonetheless, the relationship between density and spacing behavior is mediated by other factors leading to variation in the spatial overlap among neighboring individuals. For example, higher food availability relaxes the effects of population density on space use (Adams, 2001; Schoepf et al., 2015). Similarly, higher genetic relatedness within population leads to higher spatial overlap among individuals (Le Galliard, Gundersen, Andreassen, & Stenseth, 2006; Pilot, Dąbrowski, Jancewicz, Schtickzelle, & Gliwicz, 2010). At the same time, the increased resource sharing might negatively affect

This is an open access article under the terms of the Creative Commons Attribution License, which permits use, distribution and reproduction in any medium, provided the original work is properly cited.

individual reproductive success (Lambin & Krebs, 1993), and spatial overlap among individuals determines the rate of disease transmission (Pedersen & Greives, 2008; Proffitt, White, & Garrott, 2010). Thus, recognizing how density and other factors interact in determining the population spatial structure is crucial to understanding population dynamics (Andreassen et al., 2013). However, separating effects of density from other factors in natural populations is difficult, because different factors covary in space and time (Efford et al., 2016; Schoepf et al., 2015).

Spatially explicit capture–recapture (SECR) models provide a new tool to evaluate temporal or spatial changes in space use in relation to population density (Efford et al., 2016). In SECR models, population density ( $D$ ) is estimated simultaneously with the spatial scale of detection ( $\sigma$ ), a measure of space use (Efford, 2004). Each animal is assumed to occupy a home range center at an unknown location, and each detector (e.g., live trap) is set at known location described by Cartesian coordinates (Borchers & Efford, 2008; Efford, 2004). The detection function describes the increasing probability of detection with decreasing distance between an animal's home range center and the detector (Borchers & Efford, 2008; Efford & Fewster, 2013; Efford et al., 2016). Thus, the spatial scale of detection ( $\sigma$ ) increases with the home range, and the parameter  $\sigma$  is a model-based index of home range size (Efford et al., 2016). Both parameters ( $D$  and  $\sigma$ ) might vary among populations, and their relationship reflects the degree of overlap between individual home ranges (Efford et al., 2016). This relationship can be parameterized equivalently using  $k$  that describes the degree of overlap between home ranges ( $k = \sigma\sqrt{D}$ ) (Efford et al., 2016).

In this work, we used SECR models to evaluate whether the relationship between population density and small mammals' space use differs at two distinct phases of the rodent population cycle: post-mast peak in abundance (first summer after masting; hereafter FSA) and subsequent crash (second summer after masting; SSA). We used yellow-necked mouse (*Apodemus flavicollis*; Figure 1) population as a model system. The fluctuations of the studied population are induced by beech (*Fagus sylvatica*) mast seeding (Zwolak, Bogdziewicz, & Rychlik, 2016), that is, the intermittent and synchronized production



**FIGURE 1** Yellow-necked mouse (*Apodemus flavicollis*) is a granivorous woodland rodent common in Europe (photo by Stanisław Pagacz)

of seeds (Crone & Rapp, 2014; Kelly, 1994). Strong effects of masting on rodent population dynamics occur in a variety of ecosystems leading to several fold increases in population abundance after mast years (Bogdziewicz, Zwolak, & Crone, 2016; Ostfeld & Keesing, 2000). The general assumption is that the masting-mediated increase in population density decreases mammals' home range size (Auger, Meyer, & Jenkins, 2016; Kozakai et al., 2011; Lacher & Mares, 1996; McShea & Schwede, 1993; Stradiotto et al., 2009). However, at the distinct phases of the population cycle generated by masting, other factors (e.g., kin structure) might vary as well, leading to variation in the relationship between rodent density and spatial behavior. Such effects could alter the density–home range area relationship with potential consequences for population dynamics.

Our null hypothesis is that the effects of masting on rodent space use are solely density-mediated, that is, the relationship between density and home range area does not differ between FSA (i.e., peak of the population cycle) and SSA (subsequent crash phase of the population cycle) years. Alternatively, the relationship could differ between the phases of the population cycle, revealing more complicated effects of masting on rodent populations. The direct influence of beech seed abundance on space use of mice is ruled out, because we sampled rodent populations only during summer, when beech seeds are unavailable (they are produced in the fall and germinate or rot in the spring). Therefore, we are able to use relationships between density and home range use in FSA and SSA years to test whether changes in density are sufficient to explain changes in home range size or whether additional factors need to be invoked. Based on patterns in our data, we discuss additional factors that might be responsible for relationships between density and space use in different phases of mast-induced population cycles.

## 2 | METHODS

### 2.1 | Natural history

The yellow-necked mouse is a granivorous woodland rodent that is common in deciduous forests of central and eastern Europe. In beech forests, mice rely on spatially clumped and fluctuating resources (nuts) (Jensen, 1982; Zwolak et al., 2016), and mast seeding of beech causes strong fluctuations in the abundance of mice (Jensen, 1982; Zwolak et al., 2016). Mast of deciduous trees is the main food source of the mouse (>80% of the diet), in both mast and nonmast years (Drózd, 1966; Selva, Hobson, Cortés-Avizanda, Zalewski, & Donázar, 2012). The post-mast increase in rodent abundance is driven by high overwinter survival and winter breeding (Jensen, 1982; Pucek, Jedrzejewski, Jedrzejewska, & Pucek, 1993). Factors affecting the post-outbreak crash in rodent numbers are less known, but low food availability, predation, and disease are likely candidates (Pedersen & Greives, 2008; Pucek et al., 1993). Females' space use is expected to be driven by food availability, and males' space use by female distribution (Ostfeld, 1990; Stradiotto et al., 2009). Thus, females are expected to maintain smaller and more exclusive territories than males (Ostfeld, 1990; Stradiotto et al., 2009).

## 2.2 | Study site

We trapped small mammals in Gorzowska Forest (Map S1, Appendix S1), situated in western Poland. The forest is located in temperate climate zone at an altitude of 60–80 m. Average annual precipitation equals 523 mm, and average annual temperature 8°C. Common tree species include *Fagus sylvatica*, *Quercus* spp., *Pinus sylvestris*, and *Larix decidua*. For the study, we selected eight sites solely occupied by beech trees. Distances among sites averaged 1.6 km ( $SD = 0.8$  km, range: 0.4–6 km). More detailed description of study sites can be found in Zwolak et al. (2016).

## 2.3 | Small mammal trapping

We trapped small mammals during four years (2010–2013), in four monthly sessions (June–September). We divided the sites into two sets, and sites within each set were trapped simultaneously for five consecutive nights (i.e., 40 960 trap nights in total). At each site, we set up  $8 \times 8$  trapping grids with 10-m spacing between trap stations. One wooden live trap (“dziekanówka” type, widely used in Poland, size  $21 \times 8 \times 9.5$  cm) was placed at each trap station and baited with rolled oats and sunflower seeds. The traps that we used are designed for single catches, but double catches sometimes occurred. We checked traps in the morning (starting at 08:00) and in the evening (starting at 18:00). We identified captured rodents to species, determined their sex, and marked them with uniquely numbered ear tags.

## 2.4 | Beech nut production

We determined yearly beech seed production by counting seeds on the ground (Hilton & Packham, 1997). We sampled beech by collecting and counting all seeds in  $0.25 \text{ m}^2$  squares (24 per site in 2009 and 12 per site in 2010–2012) centered on randomly selected trap stations. Each year, we selected the points in a stratified random manner: Each site was divided into four subplots, with six (2009) or three (2010–2012) trap stations per subplot used as sampling points. The sampling was conducted once per year in late October after seeds had fallen in mid-October.

## 2.5 | Spatially explicit capture–recapture models

We estimated the population density ( $D$ ) by fitting models using the detection function  $\lambda(d; \lambda_0, \sigma)$  that describes the decline in cumulative probability of detection  $\lambda$  with increasing distance  $d$  between an animal home range center and a trap (Borchers & Efford, 2008; Efford et al., 2016). The parameter  $\lambda_0$  represents the probability of detecting an individual when a trap is located at its activity center. The parameter  $\sigma$  is the spatial scale of detection that describes the relationship between detection probability and the distance between a trap and an animal activity center, that is, a metric of home range size (Efford et al., 2016). We fitted models using the “secr” package in R (Efford, 2015). We assumed home range centers to follow a uniform Poisson process (for details see, e.g., Borchers & Efford, 2008; Efford & Fewster, 2013).

The detection function followed a half-normal curve. We used models with multicatch traps, but estimates of  $D$  and  $\sigma$  are robust to this kind of model misspecification (Efford, Borchers, & Byrom, 2009a). We set the spatial buffer over the grid at 100 m after checking that density estimates did not vary with increased width.

We fitted separate models to data for male and female mice because the SECR models are computationally intense and fitting the global model for the complete dataset was not feasible. In addition, we expected a priori that space use would differ between males and females, with stronger territoriality in female mice (Ostfeld, 1990). For simplicity, we used only morning catches in the analysis (these constituted >98% of total mouse captures). Model parameters ( $D$ ,  $\lambda_0$ , and  $\sigma$ ) were set to be constant or varying among trapping sessions;  $\lambda_0$  also included (global) behavioral difference between initial and subsequent captures (i.e., trap happy or trap shy). We allowed  $D$ ,  $\lambda_0$ , and  $\sigma$  to vary independently. Thus, we fitted 12 models for each sex representing all possible combinations of these three parameters. All models also included separate parameters for each site, that is, the most simple, “constant” model included eight estimates of  $\lambda_0$ ,  $D$ , and  $\sigma$  (one for each site). Thus, the most complicated model included 48 estimates of each parameter, one for each of 16 trapping sessions at each site. The best model was selected with the Akaike’s information criterion corrected for small sample size, AICc (Burnham & Anderson, 2002). We also present Akaike weights ( $w_i$ ), which can be interpreted as the weight of evidence in favor of a particular model relatively to other considered models (Burnham & Anderson, 2002).

We also explored models with density dependence of sigma differing only between phases of the mast-induced population cycle (using the  $k$  re-parameterization of SECR, see Efford et al., 2016). However, more complicated models with  $\sigma$  and density differing independently with years and sites fitted data far better (according to AICc scores, presumably due to other factors that also differed among sites and years). Therefore, we fitted more complicated models to avoid biased parameter estimates and then tested whether the density versus sigma relationship is affected by masting with generalized linear mixed models. Based on the estimated  $D_p$  and  $\sigma_p$ , we calculated session-specific  $k_p$  and used this parameter to calculate  $S_{95}$  ( $S_{95} = 6\pi k^2$ ), which represents an estimate of the number of individuals that occurs at any time within the area of an individual’s 95% home range limits (for details and assumptions see Efford et al., 2016).

## 2.6 | Generalized linear mixed models

We explored the relationship between SECR-based estimates of home range size ( $\sigma$ ), rodent density, and mast seeding with generalized linear mixed models (GLMMs) implemented in R using “lme4” package (Bates, Maechler, Bolker, & Walker, 2015). In the first model, we tested whether rodent density differs according to masting history and between males and females. Here, we used log-transformed rodent density ( $D$ ) as response variable, and mast seeding (FSA vs. SSA), sex, and two-way interaction as fixed effects. In the second model, we tested whether home ranges differ according to mast history, population density, and sex. Here, we used log-transformed  $\sigma$  as the response variable, and

log-transformed mouse density, mast seeding, sex, and all their two-way interactions as fixed effects. In both models, we used study site as a random effect and month as a covariate. We used Gaussian family, identity link models, and tested for statistical significance of fixed factors with Wald Type II test, implemented via the "car" package in R (Fox & Weisberg, 2011).

### 3 | RESULTS

Beech produced abundant seed crops in 2009 (mean  $\pm$  SD:  $345 \pm 80$  nuts/m<sup>2</sup>) and 2011 ( $382 \pm 83$  nuts/m<sup>2</sup>). In 2010 and 2012, beech failed to produce seeds: No nuts were found on the ground or observed on the tree branches.

For both sexes, density (D) and home range size ( $\sigma$ ) varied among trapping sessions (Table 1). In males, model assuming D and  $\sigma$  varying among sessions strongly outperformed all others ( $\Delta$ AICc  $\geq$  77.11). In females, the difference between this model and the second best was smaller ( $\Delta$ AICc = 3.60), but the evidence ratio ( $w_1/w_2$ ) for the best model versus the second was 6.03. Therefore, we estimated D and  $\sigma$  separately for each trapping session (for parameter estimates see Table 1 in Appendix) and input these estimates into GLMMs.

Mouse densities were higher in FSA than in SSA years (main effect of "mast,"  $\chi^2 = 177.19$ ,  $p < .001$ ), and density of males was higher than that of females (the main effect of "sex,"  $\chi^2 = 5.10$ ,  $p = .02$ , Figure 2). The effect of mast seeding on rodent density did not differ between sexes (mast  $\times$  sex interaction,  $\chi^2 = 0.01$ ,  $p = .90$ ). In the crash phase, the average densities were estimated as  $6.37 \pm 5.95$  (mean  $\pm$  SD) individuals/ha in males and  $5.26 \pm 5.33$  inds/ha in females. In the peak phase, the density increased fourfold: to  $27.68 \pm 17.61$  inds/ha in males and  $22.36 \pm 15.89$  inds/ha in females.

As expected, home range size declined with density (main effects of density in Table 2, Figure 2). Home range size also differed between phases of the mast-induced population cycle (the main effects of "mast" in Table 2, Figure 3). After correcting for changes in density, yellow-necked mice had larger home ranges in FSA than in SSA years. Home range sizes also differed significantly between male and female mice; males had larger home ranges (the main effect of Sex in Table 2, Figure 3). We also observed a significant Mast  $\times$  Sex interaction (Table 2); home range size of female mice differed more between phases of the mast-induced population cycle than home range size of males. No other interactions were statistically significant (Table 2).

The parameter  $k$  (index of home range overlap, Efford et al., 2016) averaged among sites and months ( $\pm$ SE) was 0.54 ( $\pm$ 0.01) for females and 0.58 ( $\pm$ 0.01) for males in FSA, and 0.30 ( $\pm$ 0.02) for females and 0.37 ( $\pm$ 0.02) for males in SSA. The parameter  $S_{95}$  (the number of individuals within the area of one home range, Efford et al., 2016) was 5.93 for females and 6.75 for males in FSA, and 2.04 for females and 3.06 for males in SSA.

### 4 | DISCUSSION

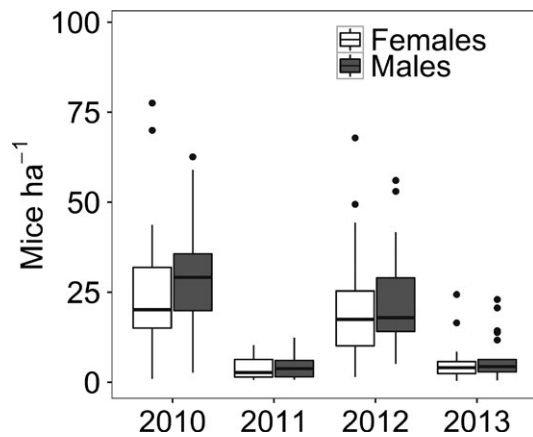
Our study shows that density-mediated effects alone are not sufficient to explain changes in mouse spatial behavior evoked by mast seeding. Past studies have generally concluded that masting reduces space use through increased population density (Auger et al., 2016; Mazurkiewicz & Rajska-Jurgiel, 1998; Stradiotto et al., 2009). Our results partly support this prediction, in that  $\sigma$ , the index of home range size, declined with increasing density and was generally lower in FSA compared to SSA years. However, for the same level of density, home

Model structure					
$\lambda_0$	D	$\sigma$	#P	$\Delta$ AICc	$w_i$
(a) Females					
Behavioral response	Session	Session	230	0	0.86
Session + Behavioral response	Session	(.)	230	3.60	0.14
Session + Behavioral response	Session	Session	329	57.71	<0.001
Behavioral response	Session	(.)	131	100.32	<0.001
Session	Session	(.)	222	111.84	<0.001
(b) Males					
Behavioral response	Session	Session	242	0	1
Session + Behavioral response	Session	Session	347	77.12	<0.001
Session + Behavioral response	Session	(.)	242	107.72	<0.001
Behavioral response	Session	(.)	137	156.52	<0.001
(.)	Session	Session	234	159.57	<0.001

**TABLE 1** Model selection table, identifying the most parsimonious models of density and home range of a) females and b) males of yellow-necked mice

Only the best five candidate models are shown.

$\lambda_0$ , detection probability; D, density;  $\sigma$ , spatial scale of detection (i.e., metric of home range size); (.), constant; session, varying among trapping sessions. The models were ranked according to  $\Delta$ AICc; #P denotes the number of parameters, and  $w_i$  can be interpreted as the weight of evidence in favor of model  $i$  (Burnham & Anderson, 2002).



**FIGURE 2** Density of females and males of the yellow-necked mouse in Gorzowska Forest (W Poland). Monthly (4 months) site-specific (eight grids) densities are averaged to show differences among years. Beech masting occurred in 2009 and 2011. Density is derived from SECR models that received best AIC support (see Table 1 and Methods for details). Boxes denote 25th, 50th, and 75th percentiles; whiskers represent the lowest and highest datum within the 1.5 interquartile range

**TABLE 2** Statistical significance of GLMM fixed effects testing the relationship between mast seeding and rodent space use

Fixed effect	$\chi^2$	<i>p</i>
Mast	28.09	<.001
Sex	3.98	.05
Density	148.71	<.001
Mast × sex	4.40	.03
Mast × density	2.69	.07
Sex × density	0.53	.46

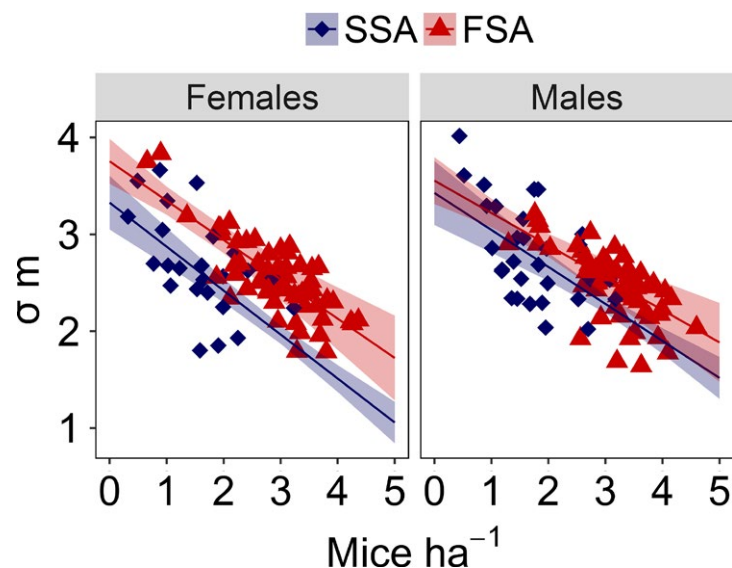
The response variable is log-transformed sigma (i.e., SECR-derived metric of home range size). Study site was used as random effect. Degrees of freedom for all effects equal 1

range sizes were larger in the peak phase of the cycle (FSA) in comparison with the crash phase (SSA). This indicates a higher degree of space overlap between neighboring individuals, as shown by  $k$  and  $S_{95}$  estimates (Efford et al., 2016). It is not clear whether mice are more tolerant of overlap in space use in post-mast years or whether they are constrained to use more space, relative to overall densities. However, it is clear that the effects of mast seeding on space use in mice are more complicated than simple density-mediated changes in space use.

In order to explain the difference in spatial overlap during different phases of the mast-induced population cycle, we need to invoke a mechanism that involves something other than the density itself. Relatedness among individuals would be likely to differ between FSA and SSA summers after masting because, for a given density, post-mast populations are in the peak phase after growth during the mast event, whereas SSA populations have grown to this density after a low density period. When mouse population density rises and territories are filled, dispersal rates typically decline in rodents (Ims & Andreassen, 2000, 2005; Lambin & Krebs, 1991; Smith & Batzli, 2006; Wolff, 1997). This process leads to higher relatedness of neighboring individuals (Andreassen et al., 2013; Pilot et al., 2010; Sutherland, Spencer, Singleton, & Taylor, 2005; Wolff, 1997). Home range overlap is higher between more closely related individuals (Ims, 1989; Kawata, 1990; Lambin & Krebs, 1993; Le Galliard et al., 2006; Wolff, 1997), probably due to reduced aggression (Kawata, 1990; Lambin & Krebs, 1993). This effect occurs in both sexes, but is stronger in females than in males (Innes et al., 2012; Ishibashi, Saitoh, Abe, & Yoshida, 1997; Le Galliard et al., 2006; Pilot et al., 2010), which is consistent with the stronger effect of masting years on female mice in our study.

The pattern of high spatial overlap among individuals in the peak phase of the population cycle found in our study is similar to that found in rodent population cycles that are not driven by masting, but by a set of intrinsic (e.g., sociality, dispersal) and extrinsic

**FIGURE 3** Relationship between density of the yellow-necked mouse and sigma ( $\sigma$ , model-derived estimate of home range size) in first summer after masting and second summer after masting years. Dots represent session-specific estimates of parameters. Note that both axes are on log scale. The log-log slope of fitted curves equals  $-0.5$ , while the difference in intercepts indicates differences in home range overlap (i.e., higher intercept denotes larger home ranges for the same level of density). Trend lines are reported with 95% confidence intervals and are based on predictions from generalized linear mixed model (see Methods section for details)





(e.g., predation) factors (Andreassen et al., 2013; Radchuk, Ims, & Andreassen, 2016). In such systems, spatial overlap enhances reproduction at the beginning of the population growth phase, but after a critical point, it triggers population collapse (reviewed in Andreassen et al., 2013). Reproduction is first enhanced because the benefits of sharing space (e.g., protection against infanticide) outpace the costs (e.g., competition for food). In the latter phase, intensified crowding slows down reproduction, and the crash is caused by predation of dominant males, which disrupts social groups and further decreases survival (Andreassen & Gundersen, 2006; Ims & Andreassen, 2000; Odden, Ims, Støen, Swenson, & Andreassen, 2014). Similar sets of intrinsic factors might be responsible for population regulation across a variety of territorial mammals (Odden et al., 2014).

Such processes have not been studied in mast-induced population cycles, although we know that dispersal rates decline during post-mast (peak) years in yellow-necked mouse (Mazurkiewicz & Rajska-Jurgiel, 1998) and that reproduction ceases in the peak phase of the cycle (Falls, Falls, & Fryxell, 2007; Fitzgerald, Efford, & Karl, 2004; Mazurkiewicz & Rajska-Jurgiel, 1998; Pucek et al., 1993; Wolff, 1996). In mast-generated population cycles, rodent abundance is still growing during early summer after masting, although beech seeds are already depleted (consumed, germinated, or rotten), and the decline begins in late summer or autumn (Falls et al., 2007; Pucek et al., 1993; Zwolak et al., 2016). Our study points that the number of individuals within one home range is 2- to 3-fold higher in FSA than in SSA. This is very likely to affect the competition for resources and disease transmission and, thus, play a role in the population decline. In that context, it might be illuminating to study how dispersal, spatial organization, reproduction, and survival covary across the whole mast-induced population cycle.

The increase in spatial overlap of home ranges that was found after mast years could be caused by other factors. Although availability of beech seeds was most likely constant across years (because trapping was conducted when this food source was unavailable), availability of other food items could vary. For example, in conifer forests of North America, masting-mediated increase in density, survival, and reproduction in deer mice (*Peromyscus maniculatus*) was delayed to summer after masting (Lobo & Millar, 2013). Authors suggested that the fir (*Abies lasiocarpa*) masting resulted in population response of invertebrate seed predators that translated into higher prey availability for rodents (Lobo & Millar, 2013). Such an effect could potentially prolong the window of increased food availability after masting into next year summer and affect spatial behavior of mice. Investigating whether masting results in the second-order pulse in invertebrate numbers could be an interesting avenue for future research.

Spatially explicit capture–recapture models provide an effective tool to separate the effects of density on space use from other factors (Efford et al., 2016) and allowed us to show that the patterns of space use differ between distinct phases of rodent population cycle. One advantage is that our research was based on an extensive dataset that allowed the estimation of population-wide changes in space use. This scale is usually infeasible in telemetry-based studies that are necessarily limited to a smaller subsample of individuals. Moreover, live

trapping (or analogous methods based on proximity detectors: Efford, Dawson, & Borchers, 2009b; Efford, 2011) is a widely used research method. This wide use means that SECR models can be applied to separate the effects of density from other important biological factors in a wide range of ecological problems, for example, in studies testing the influence of habitat type on space use, in studies on multi-annual population cycles of voles and lemmings where spacing behavior is likely to be a key component of population regulation (Andreassen et al., 2013; Efford et al., 2016; Wolff, 1997), or to study spacing behavior of pests to inform management policy (Ringler et al., 2014). We hope that our study will encourage future applications of this method.

## ACKNOWLEDGMENTS

We thank Leone M. Brown for suggesting SECR models and Murray Efford for his invaluable tips at SECR forum. We thank Nadleśnictwo Bogdaniec for permission to conduct this study at Leśnictwo Wysoka. Sylwia Dziemian-Zwolak, Aleksandra Wróbel, Milena Zduniak, and numerous other AMU students helped during the field work. This study was supported by Polish Ministry of Science and Higher Education Grant No. NN304391537 and Polish National Science Centre Grant No. 2012/04/M/NZ8/00674 awarded to RZ. MB was supported by National Science Centre grant “Etiuda” no. 2015/16/T/NZ8/00018 and by Foundation for Polish Science scholarship “Start.” Participation by EEC and LR was supported through the Wendy and Neil Sandler International Research Program at Tufts University. SECR models were run with support from PLGrid Infrastructure. This research was conducted under the approval of the Local Ethical Commission for Experiments with Animals in Poznań (permits no. 62/2008 and no. 13/2012) and the General Director for Environmental Protection (permit no. DOPozgiz-4200/IV- 43/2800/10/JRO).

## CONFLICT OF INTEREST

The authors declare no conflict of interest.

## REFERENCES

- Adams, E. S. (2001). Approaches to the study of territory size and shape. *Annual Review of Ecology and Systematics*, 32, 277–303.
- Andreassen, H. P., Glorvigen, P., Rémy, A., & Ims, R. A. (2013). New views on how population- intrinsic and community-extrinsic processes interact during the vole population cycles. *Oikos*, 122, 507–515. doi: 10.1111/j.1600-0706.2012.00238.x
- Andreassen, H. P., & Gundersen, G. (2006). Male turnover reduces population growth: An enclosure experiment on voles. *Ecology*, 87, 88–94. doi: 10.1890/04-1574
- Auger, J., Meyer, S. E., & Jenkins, S. H. (2016). A mast-seeding desert shrub regulates population dynamics and behavior of its heteromyid dispersers. *Ecology and Evolution*, 6, 2275–2296. doi: 10.1002/ece3.2035
- Bates, D., Maechler, M., Bolker, B., & Walker, S. (2015). Fitting linear mixed-effects models using lme4. *The Journal of Statistical Software*, 67, 1–48. doi: 10.18637/jss.v067.i01
- Bogdziewicz, M., Zwolak, R., & Crone, E. E. (2016). How do vertebrates respond to mast seeding? *Oikos*, 125, 300–307. doi: 10.1111/oik.03012

- Borchers, D. L., & Efford, M. (2008). Spatially explicit maximum likelihood methods for capture–recapture studies. *Biometrics*, *64*, 377–385.
- Boutin, S. (1990). Food supplementation experiments with terrestrial vertebrates: Patterns, problems, and the future. *Canadian Journal of Zoology*, *68*, 203–220.
- Burnham, K. P., & Anderson, D. R. (2002). *Model selection and multimodel inference: A practical information-theoretic approach*. Springer-Verlag New York: Springer Science and Business Media.
- Burt, W. H. (1943). Territoriality and home range concepts as applied to mammals. *Journal of Mammalogy*, *24*, 346–352.
- Crone, E. E., & Rapp, J. (2014). Resource depletion, pollen coupling, and the ecology of mast seeding. *Annals of the New York Academy of Sciences*, *1322*, 21–34. doi: 10.1111/nyas.12465
- Desy, E., Batzli, G., & Liu, J. (1990). Effects of food and predation on behaviour of prairie voles: A field experiment. *Oikos*, *58*, 159–168. doi: 10.2307/3545423
- Drózd, A. (1966). Food habits and food supply of rodents in the beech forest. *Acta Theriologica*, *16*, 363–384.
- Efford, M. G. (2004). Density estimation in live-trapping studies. *Oikos*, *106*, 598–610. doi: 10.1111/j.0030-1299.2004.13043.x
- Efford, M. G. (2011). Estimation of population density by spatially explicit capture–recapture analysis of data from area searches. *Ecology*, *92*, 2202–2207. doi: 10.1890/11-0332.1
- Efford, M. G. (2015). *secr: Spatially explicit capture-recapture models*. R package version 2.9.4. <http://CRAN.R-project.org/package=secr>
- Efford, M. G., Borchers, D. L., & Byrom, A. E. (2009a). Density estimation by spatially explicit capture–recapture: Likelihood-based methods. In D. L. Thomson, E. G. Cooch, & M. J. Conroy (Eds.), *Modeling demographic processes in marked populations: Environmental and ecological statistics* (pp. 255–269). New York, NY: Springer.
- Efford, M. G., Dawson, D. K., & Borchers, D. L. (2009b). Population density estimated from locations of individuals on a passive detector array. *Ecology*, *90*, 2676–2682. doi: 10.1890/08-1735.1
- Efford, M. G., Dawson, D., Jhala, Y., & Qureshi, Q. (2016). Density-dependent home-range size revealed by spatially explicit capture–recapture. *Ecography*, *39*, 676–688. doi: 10.1111/ecog.01511
- Efford, M. G., & Fewster, R. M. (2013). Estimating population size by spatially explicit capture–recapture. *Oikos*, *122*, 918–928. doi: 10.1111/j.1600-0706.2012.20440.x
- Falls, J. B., Falls, E. A., & Fryxell, J. M. (2007). Fluctuations of deer mice in Ontario in relation to seed crops. *Ecological Monographs*, *77*, 19–32. doi: 10.1890/05-1485
- Fitzgerald, B., Efford, M., & Karl, B. (2004). Breeding of house mice and the mast seeding of southern beeches in the Orongorongo Valley, New Zealand. *New Zealand Journal of Zoology*, *31*, 167–184.
- Fox, J., & Weisberg, S. (2011). *An R companion to applied regression*, 2nd ed. Thousand Oaks, CA: Sage.
- Godsall, B., Coulson, T., & Malo, A. F. (2014). From physiology to space use: Energy reserves and androgenization explain home-range size variation in a woodland rodent. *Journal of Animal Ecology*, *83*, 126–135. doi: 10.1111/1365-2656.12116
- Hilton, G., & Packham, J. (1997). A sixteen-year record of regional and temporal variation in the fruiting of beech (*Fagus sylvatica* L.) in England (1980–1995). *Forestry*, *70*, 7–16. doi: 10.1093/forestry/70.1.7
- Ims, R. A. (1989). Kinship and origin effects on dispersal and space sharing in *Clethrionomys rufocanus*. *Ecology*, *70*, 607–616.
- Ims, R. A., & Andreassen, H. P. (2000). Spatial synchronization of vole population dynamics by predatory birds. *Nature*, *6809*, 194–196.
- Ims, R. A., & Andreassen, H. P. (2005). Density-dependent dispersal and spatial population dynamics. *Proceedings of the Royal Society B: Biological Sciences*, *272*, 913–918. doi: 10.1098/rspb.2004.3025
- Innes, R. J., Mceachern, M. B., Van Vuren, D. H., Eadie, J. M., Kelt, D. A., & Johnson, M. L. (2012). Genetic relatedness and spatial associations of dusky-footed woodrats (*Neotoma fuscipes*). *Journal of Mammalogy*, *93*, 439–446. doi: 10.1644/11-MAMM-A-171.1
- Ishibashi, Y., Saitoh, T., Abe, S., & Yoshida, M. (1997). Sex-related spatial kin structure in a spring population of grey-sided voles *Clethrionomys rufocanus* as revealed by mitochondrial and microsatellite DNA analyses. *Molecular Ecology*, *6*, 63–71. doi: 10.1046/j.1365-294X.1997.00152.x
- Jensen, T. S. (1982). Seed production and outbreaks of non-cyclic rodent populations in deciduous forests. *Oecologia*, *54*, 184–192.
- Kawata, M. (1990). Fluctuating populations and kin interaction in mammals. *Trends in Ecology & Evolution*, *5*, 17–20. doi: 10.1016/0169-5347(90)90007-Z
- Kelly, D. (1994). The evolutionary ecology of mast seeding. *Trends in Ecology & Evolution*, *12*, 465–470. doi: 10.1016/0169-5347(94)90310-7
- Kozakai, C., Yamazaki, K., Nemoto, Y., Nakajima, A., Koike, S., Abe, S., ... Kaji, K. (2011). Effect of mast production on home range use of Japanese black bears. *Journal of Wildlife Management*, *75*, 867–875. doi: 10.1002/jwmg.122
- Lacher, T. E., & Mares, M. A. (1996). Availability of resources and use of space in eastern chipmunks, *Tamias striatus*. *Journal of Mammalogy*, *77*, 833–849. doi: 10.2307/1382689
- Lambin, X., & Krebs, C. J. (1991). Can changes in female relatedness influence microtine population dynamics? *Oikos*, *61*, 126–132. doi: 10.2307/3545414
- Lambin, X., & Krebs, C. J. (1993). Influence of female relatedness on the demography of Townsend's vole populations in spring. *Journal of Animal Ecology*, *62*, 536–550. doi: 10.2307/5203
- Lambin, X., & Yoccoz, N. G. (1998). The impact of population kin-structure on nestling survival in Townsend's voles, *Microtus townsendii*. *Journal of Animal Ecology*, *67*, 1–16. doi: 10.1046/j.1365-2656.1998.00181.x
- Le Galliard, J.-F., Gundersen, G., Andreassen, H., & Stenseth, N. (2006). Natal dispersal, interactions among siblings and intrasexual competition. *Behavioral Ecology*, *17*, 733–740. doi: 10.1093/beheco/arl002
- Lobo, N., & Millar, J. S. (2013). Indirect and mitigated effects of pulsed resources on the population dynamics of a northern rodent. *Journal of Animal Ecology*, *82*, 814–825.
- Mazurkiewicz, M., & Rajska-Jurgiel, E. (1998). Spatial behaviour and population dynamics of woodland rodents. *Acta Theriologica*, *43*, 137–162. doi: 10.1111/1365-2656.12062
- McLoughlin, P. D., & Ferguson, S. H. (2000). A hierarchical pattern of limiting factors helps explain variation in home range size. *Ecoscience*, *7*, 123–130.
- McShea, W. J., & Schwede, G. (1993). Variable acorn crops: Responses of white-tailed deer and other mast consumers. *Journal of Mammalogy*, *74*, 999–1006. doi: 10.2307/1382439
- Odden, M., Ims, R. A., Støen, O. G., Swenson, J. E., & Andreassen, H. P. (2014). Bears are simply voles writ large: Social structure determines the mechanisms of intrinsic population regulation in mammals. *Oecologia*, *175*, 1–10. doi: 10.1007/s00442-014-2892-z
- Ostfeld, R. S. (1990). The ecology of territoriality in small mammals. *Trends in Ecology & Evolution*, *5*, 411–415. doi: 10.1016/0169-5347(90)90026-A
- Ostfeld, R. S., & Keasing, F. (2000). Pulsed resources and community dynamics of consumers in terrestrial ecosystems. *Trends in Ecology & Evolution*, *15*, 232–237. doi: 10.1016/S0169-5347(00)01862-0
- Pedersen, A. B., & Greives, T. J. (2008). The interaction of parasites and resources cause crashes in a wild mouse population. *Journal of Animal Ecology*, *77*, 370–377. doi: 10.1111/j.1365-2656.2007.01321.x
- Pilot, M., Dąbrowski, M. J., Jancewicz, E., Schtickzelle, N., & Gliwicz, J. (2010). Temporally stable genetic variability and dynamic kinship structure in a fluctuating population of the root vole *Microtus oeconomus*. *Molecular Ecology*, *19*, 2800–2812. doi: 10.1111/j.1365-294X.2010.04692.x
- Proffitt, K. M., White, P. J., & Garrott, R. A. (2010). Spatio-temporal overlap between Yellowstone bison and elk—implications of wolf restoration and other factors for brucellosis transmission risk. *Journal of Applied Ecology*, *47*(2), 81–289. doi: 10.1111/j.1365-2664.2010.01770.x
- Pucek, Z., Jedrzejewski, W., Jedrzejewska, B., & Pucek, M. (1993). Rodent population dynamics in a primeval deciduous forest (Białowieża National Park) in relation to weather, seed crop, and predation. *Acta Theriologica*, *38*, 199–199.



- Radchuk, V., Ims, R. A., & Andreassen, H. P. (2016). From individuals to population cycles: The role of extrinsic and intrinsic factors in rodent populations. *Ecology*, *97*, 720–732. doi: 10.1890/15-0756.1
- Ringler, D., Russel, J., Jaeger, A., Pinet, P., Bastien, M., & Le Corre, M. (2014). Invasive rat space use on tropical islands: Implications for bait broadcast. *Basic and Applied Ecology*, *15*, 176–186. doi: 10.1016/j.baae.2014.01.005
- Schmidt, K. A., & Ostfeld, R. S. (2003). Mice in space: Space use predicts the interaction between mice and songbirds. *Ecology*, *84*, 3276–3283. doi: 10.1890/02-0643
- Schoepf, I., Schmohl, G., König, B., Pillay, N., & Schradin, C. (2015). Manipulation of population density and food availability affects home range sizes of African striped mouse females. *Animal Behaviour*, *99*, 53–60. doi: 10.1016/j.anbehav.2014.10.002
- Selva, N., Hobson, K. A., Cortés-Avizanda, A., Zalewski, A., & Donazar, J. A. (2012). Mast pulses shape trophic interactions between fluctuating rodent populations in a primeval forest. *PLoS ONE*, *7*(12), e51267. doi: 10.1371/journal.pone.0051267
- Smith, E. J., & Batzli, O. G. (2006). Dispersal and mortality of prairie voles (*Microtus ochrogaster*) in fragmented landscapes: A field experiment. *Oikos*, *112*, 209–217. doi: 10.1111/j.0030-1299.2006.13431.x
- Stradiotto, A., Cagnacci, F., Delahay, R., Tioli, S., Nieder, L., & Rizzoli, A. (2009). Spatial organization of the yellow-necked mouse: Effects of density and resource availability. *Journal of Mammalogy*, *90*, 704–714. doi: 10.1644/08-MAMM-A-120R1.1
- Sutherland, D. R., Spencer, P., Singleton, G. R., & Taylor, A. C. (2005). Kin interactions and changing social structure during a population outbreak of feral house mice. *Molecular Ecology*, *14*, 2803–2814. doi: 10.1111/j.1365-294X.2005.02623.x
- Wolff, J. O. (1996). Population fluctuations of mast-eating rodents are correlated with production of acorns. *Journal of Mammalogy*, *77*(3), 850–856.
- Zwolak, R., Bogdziewicz, M., & Rychlik, L. (2016). Beech mast-ing modifies the response of rodents to forest management. *Forest Ecology and Management*, *359*, 268–276. doi: 10.1016/j.foreco.2015.10.017

## SUPPORTING INFORMATION

Additional Supporting Information may be found online in the supporting information tab for this article.

**How to cite this article:** Bogdziewicz, M., Zwolak, R., Redosh, L., Rychlik, L. and Crone, E. E. (2016), Negative effects of density on space use of small mammals differ with the phase of the masting-induced population cycle. *Ecology and Evolution*, *6*: 8423–8430. doi: 10.1002/ece3.2513