

UC Irvine

UC Irvine Previously Published Works

Title

CircadiOmics: circadian omic web portal

Permalink

<https://escholarship.org/uc/item/5mk317vg>

Journal

Nucleic Acids Research, 50(W1)

ISSN

0305-1048

Authors

Samad, Muntaha
Agostinelli, Forest
Sato, Tomoki
et al.

Publication Date

2022-07-05

DOI

10.1093/nar/gkac419

Peer reviewed

CircadiOmics: circadian omic web portal

Muntaha Samad^{1,2}, Forest Agostinelli³, Tomoki Sato⁴, Kohei Shimaji⁴ and Pierre Baldi^{1,2,*}

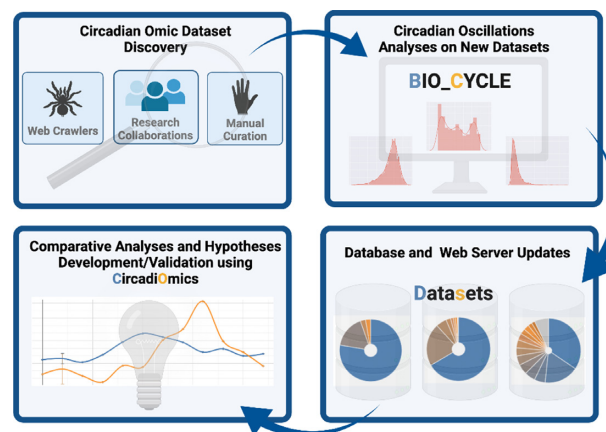
¹Department of Computer Science, University of California Irvine, Irvine, CA 92697, USA, ²Institute for Genomics and Bioinformatics, University of California, Irvine CA 92697, USA, ³Department of Computer Science and Engineering, University of South Carolina, Columbia, SC 29208, USA and ⁴Department of Biological Chemistry, Center for Epigenetics and Metabolism, School of Medicine, University of California, Irvine, CA 92697, USA.

Received March 05, 2022; Revised April 14, 2022; Editorial Decision April 27, 2022; Accepted June 01, 2022

ABSTRACT

Circadian rhythms are a foundational aspect of biology. These rhythms are found at the molecular level in every cell of every living organism and they play a fundamental role in homeostasis and a variety of physiological processes. As a result, biomedical research of circadian rhythms continues to expand at a rapid pace. To support this research, CircadiOmics (<http://circadiomics.igb.uci.edu/>) is the largest annotated repository and analytic web server for high-throughput omic (e.g. transcriptomic, metabolomic, proteomic) circadian time series experimental data. CircadiOmics contains over 290 experiments and over 100 million individual measurements, across >20 unique tissues/organs, and 11 different species. Users are able to visualize and mine these datasets by deriving and comparing periodicity statistics for oscillating molecular species including: period, amplitude, phase, *P*-value and *q*-value. These statistics are obtained from BIO_CYCLE and JTK_CYCLE and are intuitively aggregated and displayed for comparison. CircadiOmics is the most up-to-date and cutting-edge web portal for searching and analyzing circadian omic data and is used by researchers around the world.

GRAPHICAL ABSTRACT



INTRODUCTION

Circadian rhythms are found in plants, animals, fungi and cyanobacteria and are fundamental to biology (1–4). They date back to the first cyanobacteria and the origin of life on earth and, since then, through ~2 trillion revolutions of the earth on its axis, they have been deeply etched in the molecular machinery of all cells. Disruptions of circadian rhythms have been linked to health problems such as cancer, diabetes, obesity, and premature aging (2,5–12). The advance of modern high-throughput technologies has made it possible to investigate circadian rhythms at the molecular level. Measuring the concentrations of molecular species across time has shown that circadian oscillations are pervasive in all living cells (4,13,14). Circadian oscillations are generated by feedback loops which are regulated in part by the ‘core clock’ (15). The core clock is a classical inhibitory transcription-translation feedback loop which is highly conserved from animals to plants. While the core clock comprises a dozen genes including CLOCK, BMAL1, PER1, PER2, CRY1 and CRY2, in any given experiment ~10% of all transcripts and metabolites display circadian oscillations (16–22). However, the complement of molecular species exhibiting circadian oscillations greatly varies

*To whom correspondence should be addressed. Tel: +1 949 824 5809; Email: pfbaldi@ics.uci.edu
This website is free and open to all users and there is no login requirement.

with genetic, epigenetic, tissue/organ, health, age, and environmental conditions. This circadian reprogramming is a major target of active investigations aimed at understanding how environmental conditions, such as drug treatments or diets, affect circadian oscillations and how oscillations in different cells/tissues are coordinated and interact with each other (19,23–30). The large repository of omic data available via CircadiOmics, serves as an invaluable resource to analyze the complexity of circadian mechanisms and their downstream implications. The CircadiOmics interface is especially advantageous and unique because it allows users to easily perform comparative analyses and aggregated inferences about circadian rhythms at the molecular level across species, tissues/organs, and genetic, epigenetic and environmental conditions.

MATERIALS AND METHODS

Datasets

CircadiOmics currently contains over 290 omic datasets with over 100 million individual measurements, across >20 unique tissues/organs, and 11 different species. For simplicity we group the unique tissue/organ types into 13 categories: liver, brain, digestive, skin, serum, muscle, adipose, glands, cells, kidney, heart, eye and other. Figure 1B shows a breakdown of the # of datasets contained within the repository for each tissue/organ category. The species currently represented in CircadiOmics include: *Aedes aegypti*, *Anopheles gambiae*, *Arabidopsis thaliana*, *Danio rerio*, *Drosophila melanogaster*, *Homo sapiens*, *Mus musculus*, *Neurospora crassa*, *Papio anubis*, *Rattus norvegicus*, and *Rhesus macaques*. Figure 1A shows a breakdown of the number of datasets per species. As such, CircadiOmics is the most extensive, comprehensive, and current repository for circadian data. For comparison purposes, Table 1 shows a breakdown of the number and types of datasets currently available in the most prominent circadian data repositories (31–33) and [Li, D., Yang, R., Miao, Z., and Tao, W. (2010) BioClock: a web server and database aimed for interpreting circadian rhythm. Intelligent Systems for Molecular Biology 2010 meeting]. The majority of datasets in CircadiOmics are collected from the species *Mus musculus* (mouse) and *Papio anubis* (baboon) and from liver and brain tissues. In addition to a wide variety of species and tissues, CircadiOmics also has a diverse set of experimental conditions represented. Some of the experimental conditions represented include: knock-downs, knock-outs, diet changes, exercise, and drug treatments. In addition, CircadiOmics uniquely contains data from different omic experiments, including transcriptome, metabolome, proteome, and acetylome experiments. Figure 1 summarizes the number of available datasets by detailed categories. The full table summarizing all of the datasets is available on the CircadiOmics web portal with a short explanation of the dataset, a brief description of the experimental protocol, the citation, the GEO accession number, and other summary information.

Dataset collection

The datasets in CircadiOmics are collected from research collaborations, automated discovery, and manual discov-

ery. The two main automated approaches used to identify newly available circadian dataset are a web crawler developed in-house and the publicly available web service PubCrawler (34). The web crawler developed in-house uses the Python packages scholarly and geotools to search the literature to discover new circadian omic studies and their affiliated datasets. To find new datasets, the crawler performs keyword searches on published abstracts, extracts various features from the published articles, and then uses logistic regression on the extracted features to classify whether or not a dataset is a good candidate for inclusion in CircadiOmics. The datasets discovered by the crawler are then manually vetted and processed to be included into CircadiOmics. Using this crawler in tandem with PubCrawler, which sends a daily email containing a list of possible publications of interest, we are able to keep CircadiOmics current by continuously adding the latest cutting-edge research in circadian rhythms to the repository. Additionally, the CircadiOmics team and collaborating biologists include datasets from collaborative research projects and perform periodic manual searches on recent publications to further complement the data obtained through the automated discovery tools.

RESULTS

Features

The main focus of CircadiOmics is the search function, which allows users to compare and visualize the oscillation trends of molecular species. The user can select a single dataset, or multiple datasets, from within the repository and search for any molecular species. CircadiOmics allows for the overlay of multiple searches together to enable comparative studies and normalizes the output for easy visual comparison. For each query, a table of periodicity statistics including: period, amplitude, phase, *P*-value and *q*-value is displayed. These statistics are calculated using BIO_CYCLE and JTK_CYCLE (35,36). Molecular species are determined to have circadian oscillations by using *P*-values and accompanying *q*-values at a user selected threshold. In addition to selecting whether to view statistics from BIO_CYCLE or JTK_CYCLE, users can also filter datasets based on species, tissue/organ and experimental conditions.

In addition to the search functionality, to assist with the analysis of circadian experiments we have created the BIO_CYCLE web server: <http://circadiomics.igb.uci.edu/biocytle>. The web server runs the latest version of the BIO_CYCLE software on user-uploaded omic time-series datasets and provides the user with easy-to-use analysis tools which include: histograms of periods, phases, amplitudes, and offsets, querying of molecular species based on a user-selected *P*-value or *q*-value cutoff, visualization of molecular concentrations across time, and analysis at 24, 12 and 8 h periods. To use the web server, users must upload a file containing the measurements related to the concentrations of molecular species across time points (e.g. transcript levels measured every 4 h). Each row must contain the ID of the molecular species, followed by the concentration measurement at each time point. Each column corresponds to a different time point or replicate. After the file is uploaded, the server will run BIO_CYCLE on the uploaded file for

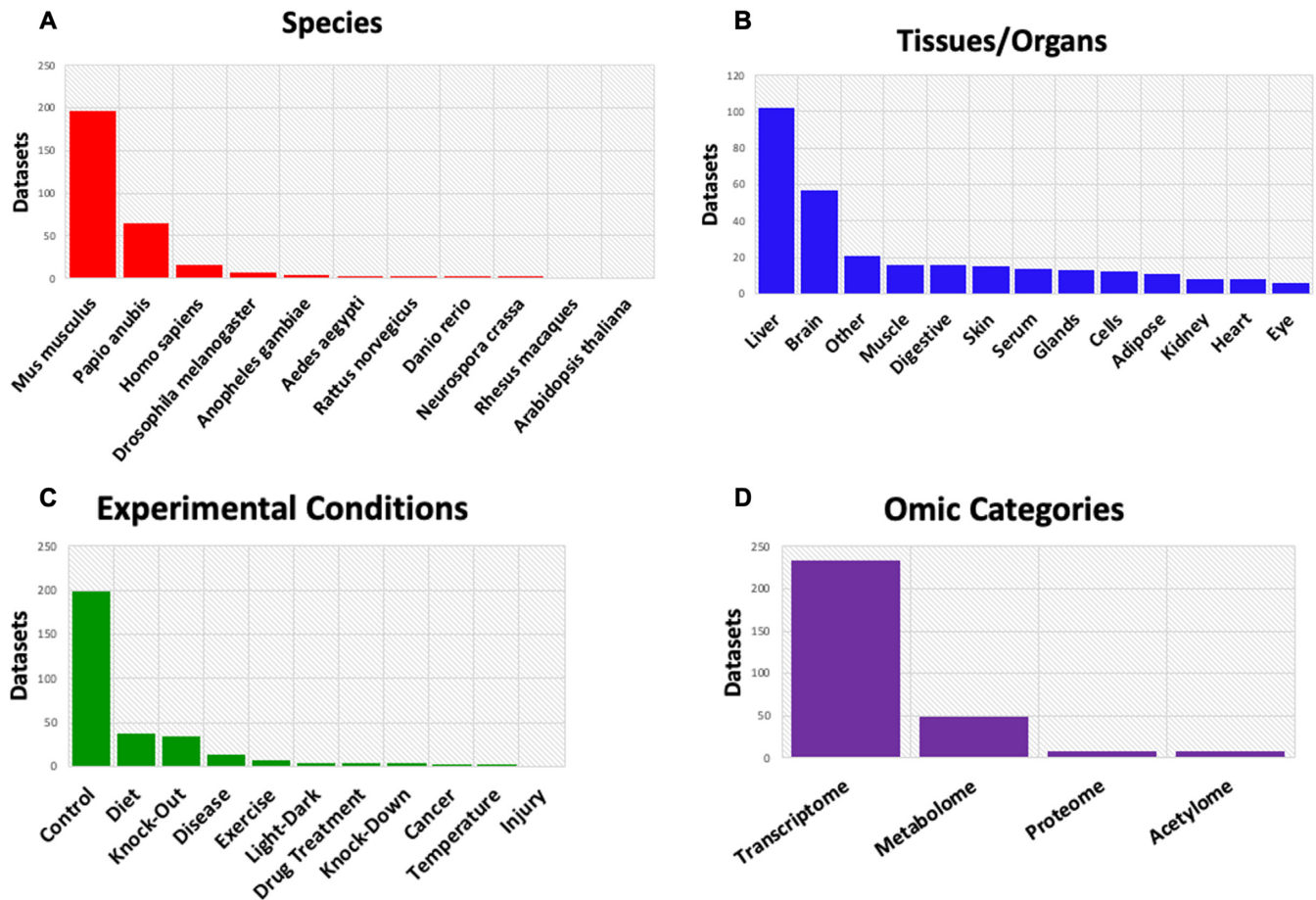


Figure 1. Breakdown of datasets by species, tissue, experimental conditions and omic categories.

Table 1. Comparison of CircadiOmics with other circadian web servers

Source	Datasets	Tissues	Species
CircadiOmics	299	25	11
CircaDB	43	15	2
BIOCLOCK	2	2	2
CirGRDB	99	<20	2

three separate period ranges: 20 through 28 h, 10 through 14 h and 7 through 9 h. A separate deep neural network (DNN) is trained for each set of timepoints and for each period range. If the DNNs are already trained, then the results should be ready within about 1 min. If the DNNs are not trained, BIO_CYCLE will automatically train them and the results will be ready within about 2 min. The user can then visualize the results using various drop-down menus to select the period of interest and P -value and q -value cutoffs. As shown in Figure 2, given the selected period to investigate, and a P -value or q -value threshold, the web server will produce histograms of periods, lags, amplitudes and offsets.

Another feature provided by CircadiOmics is the The Metabolic Atlas web portal. The Metabolic Atlas web portal (<http://circadiomics.ics.uci.edu/metabolicatlas>), allows researchers to generate and visualize interactive metabolic networks. These networks are derived from the KEGG

database and can be filtered using BIO_CYCLE statistics (37). To create a metabolic network, users start by selecting a dataset and a particular metabolite. From there, the user can select options to create a network. For example, one option is to display a network of all metabolites that are oscillating in-phase with the selected metabolite. Another possible option is to display a network of all metabolites that are involved in the same pathways as the selected metabolite. There are six possible options for the user to select from for the network creation. Once the network is displayed, the user can choose to filter out edges based on BIO_CYCLE statistics.

Improvements

Since its last publication, CircadiOmics has undergone substantial improvements including a significant increase in the number of datasets and the diversity of datasets available to its users. The number of available queryable datasets has increased from 227 to over 290, and the number of species and experimental conditions included in the web server has also increased. In addition to the significant increase in available data, the latest version of CircadiOmics and the corresponding automated data discovery pipeline have received several improvements. To optimize the automated dataset discovery process, we have started utilizing open source

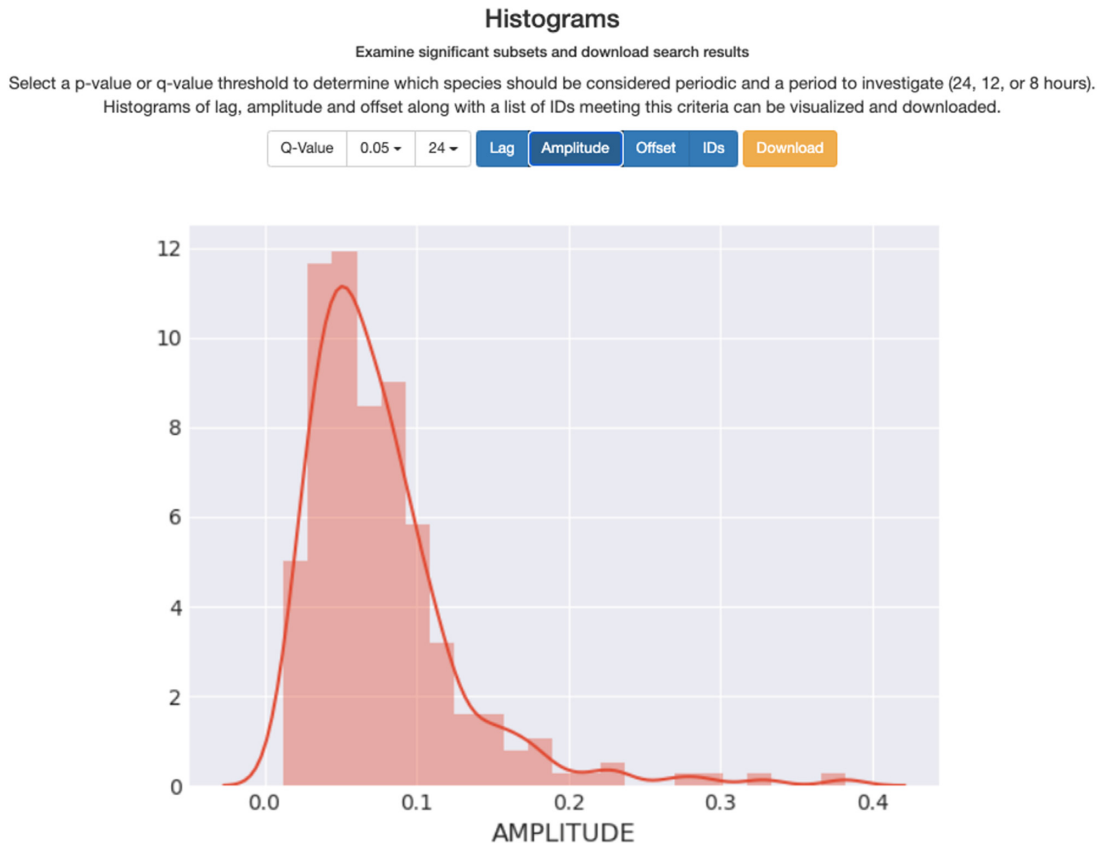


Figure 2. The BIO_CYCLE web server interface.

web-crawlers in addition to our web crawler developed in-house to make sure we are capturing as many relevant datasets as possible, and we have improved our in-house web crawler by broadening the keyword searches performed on published abstracts to allow us to discover more species and tissue types that had not previously been represented in CircadiOmics. This improvement to the web crawler is what allowed us to find circadian experiments performed on *Drosophila melanogaster*, *Danio rerio*, and *Neurospora crassa*, species not previously included in CircadiOmics. In addition, the latest version of BIO_CYCLE, which has undergone significant improvement, has been made available via the CircadiOmics web portal. The improvements to BIO_CYCLE include: implementation in Python to take advantage of state-of-the-art deep learning software, ability to handle missing timepoints, improved amplitude estimation, the addition of offset estimation, and modeling real-world replicated experimental data to produce more realistic p-values. The previous version of BIO_CYCLE was implemented in R, which does not have convenient access to deep learning libraries that allow users to utilize Graphics Processing Units (GPUs) to increase the speed of training and testing DNNs. In the previous version, we were restricted to training on slower Central Processing Units (CPUs). As a result, we only trained a small three-layer network with 100 hidden units per layer. Since the new version of BIO_CYCLE is implemented in Python, we take advantage of the PyTorch deep learning library to train

significantly larger DNNs on GPUs (38). The increased size of the DNNs substantially helps in handling missing data (e.g. missing replicates). The latest BIO_CYCLE also utilizes real-world experimental data available via CircadiOmics not only to evaluate performance and fairly compare the new BIO_CYCLE algorithm to other available algorithms, but also to better fine tune the algorithm and make *P*-value estimations more accurate. In combination, these new features allow researchers to perform end-to-end circadian analyses of their data and to compare and combine their data with other available datasets.

Applications

CircadiOmics has numerous and diverse applications. To name just a few: users can analyze a single dataset, analyze multiple datasets of the same omic type across different tissues or species, and analyze relationships between datasets of different omic types. This flexibility to perform comparative analyses has proven to be highly effective for biological discovery and hypothesis generation and as such has contributed to numerous studies that have been published in high impact journals (39–54). For example, in Koronowski *et al.* CircadiOmics was used to better understand the independence of the liver circadian clock. Using high-throughput transcriptomic and metabolomic data, they showed that the liver has independent circadian functions specific for metabolic processes, however full circadian

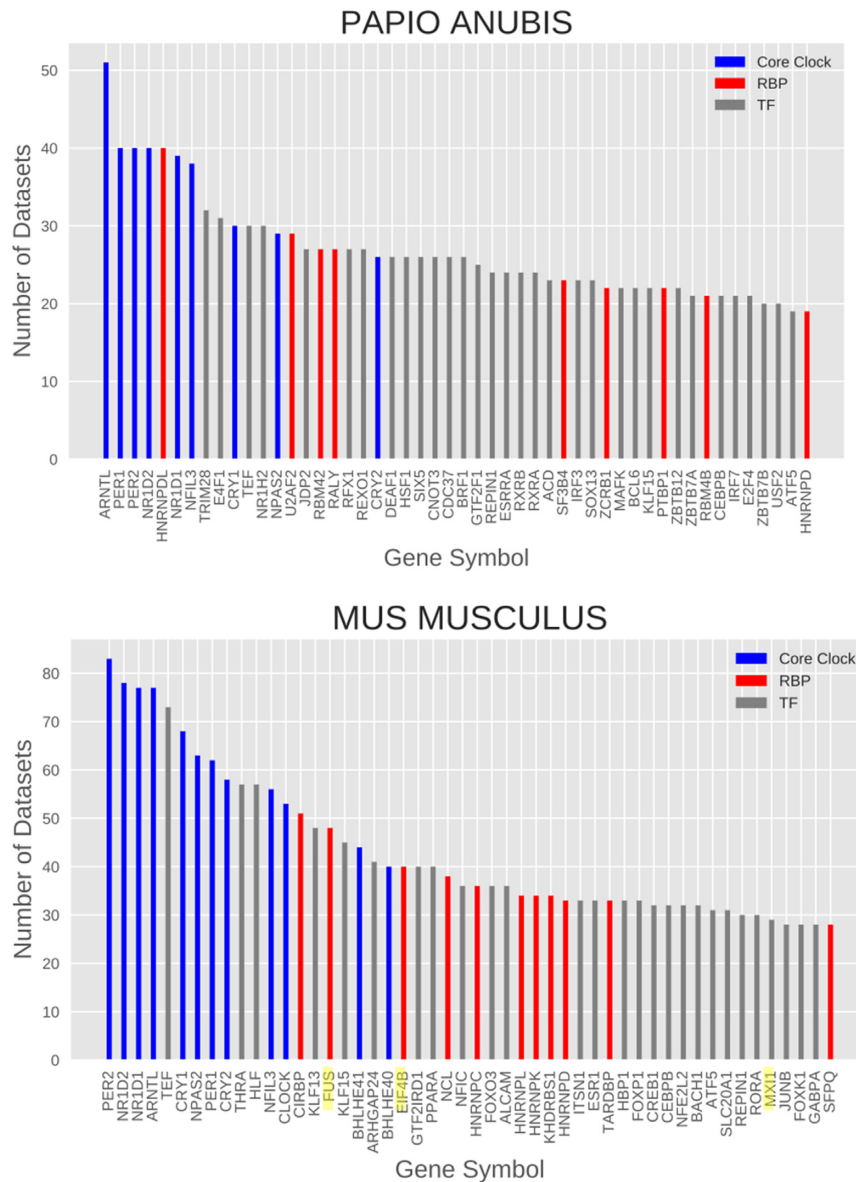


Figure 3. Frequency analysis rediscovers core clock as well as a few novel circadian regulatory TFs and RBPs. Highlighted genes are those validated in the *in vivo* experiments found in Figure 4.

function in the liver depends on signals from other clocks (55). In Tognini *et al.* CircadiOmics was used to analyze metabolomic data in the suprachiasmatic nucleus (SCN) under various experimental conditions to discover a sensitivity of brain clocks to nutrition (56). Finally, in Masri *et al.* CircadiOmics contributed to showing that lung cancer has no effect on the core clock but rather specifically reprograms hepatic metabolism, proving that a pathological condition in a given tissue can influence the circadian homeostasis in other tissues (57).

Additionally, we performed our own analysis using the data available via CircadiOmics in aggregate to better understand the overall hierarchical architecture of transcriptional circadian regulation. To perform this analysis we looked at the frequency at which important regulators, such as transcription factors (TFs) or RNA-binding proteins

(RBPs) are found to oscillate across all mouse and baboon datasets to quantify their importance in circadian regulation. The top oscillating TFs and RBPs in mice and baboons can be seen in Figure 3. We found that the circadian core clock appears with the highest frequency and is closely followed by TFs and RBPs with known interactions to the core clock. Aside from the core clock, this analysis identified multiple TFs and RBPs important to circadian regulation, some of which are corroborated by evidence in the literature and others which are novel. We were able to validate some of the novel findings with animal experiments. For example, the TFs FUS and EIF4B were identified in our analyses as having the potential for being strong circadian regulators. Consistent with this result, Figure 4 shows that the reverse transcription-quantitative PCR (RT-qPCR) and western blot analyses showed that mRNA and protein

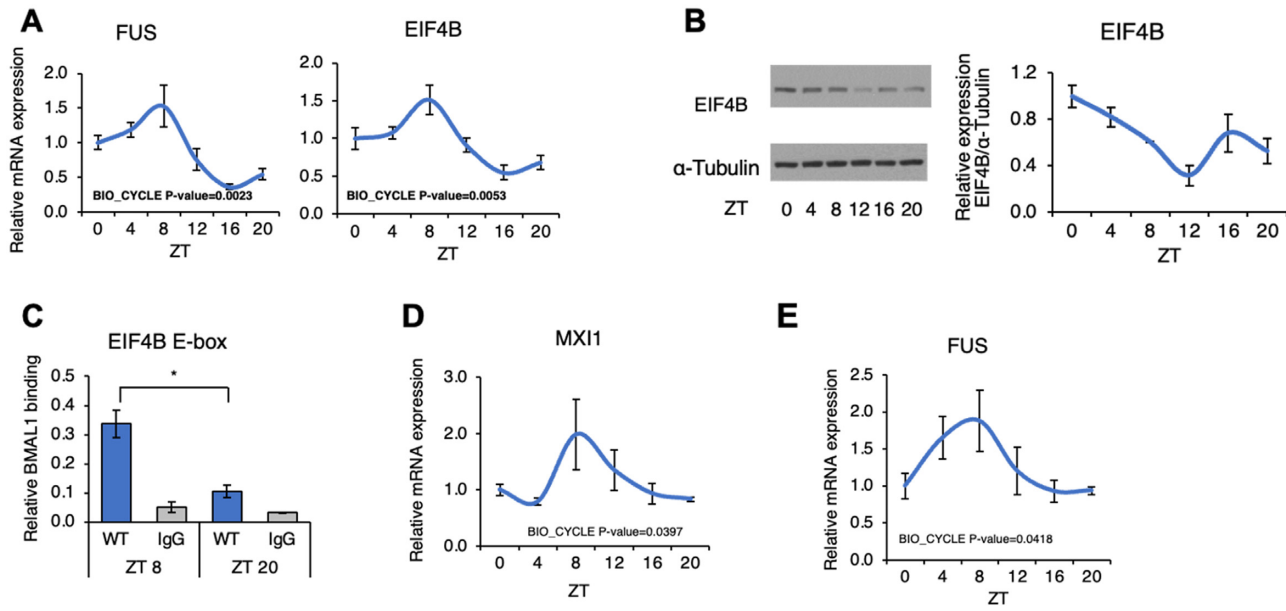


Figure 4. Validation of computational analysis results by in vivo experiments. Wild type (WT) mice samples were obtained under ad lib conditions. (A) RT-qPCR were used to determine expression of novel circadian factors detected by computational analysis in the mouse liver. The results are displayed as percent increase/decrease, from the level of mRNA expressed in the mice at ZT 0. (B) Daily rhythms in protein expression of EIF4B in the whole cell lysate from the liver ($n = 2$). Representative image of immunoblot analysis of EIF4B are shown. Line graph shows quantification from EIF4B normalized to α -tubulin. Values are expressed as a percentage of the value for ZT 0. (C) Chromatin recruitment of BMAL1 at the E-box motif contained in the EIF4B promoter. ChIP-qPCR assays were done utilizing dual cross-linked livers at ZT 8 and 20 with antibodies against BMAL1 ($n = 3$ at ZT 8, $n = 2$ at ZT 20). * $P < 0.05$ in Student's t test. (D) RT-qPCR was used to determine mRNA expression of the novel circadian factors detected by computational analysis in the liver ($n = 5$). The results are displayed as percent increase/decrease, from the level of mRNA expressed in the mice at ZT 0. (E) RT-qPCR was used to determine mRNA expression of novel circadian factors detected by computational analysis in the SCN ($n = 2$ at ZT 0, $n = 3$ at ZT 4, 8, 12, 16, 20). The results are displayed as percent increase/decrease, from the level of mRNA expressed in the mice at ZT 0.

levels of both of these genes have diurnal rhythm in the liver in certain experiments and FUS was also shown to have a diurnal rhythmicity in the SCN (Supplementary Materials). In addition, the TF MXI1 was identified in our analysis as a novel circadian factor and RT-qPCR analyses were able to detect rhythmic gene expressions of MXI1 in mice livers (Figure S4, Supplementary Materials). This analysis was repeated on a few other TFs to validate the computational experimental findings (Supplementary Figure S1). In short, *in vivo* experiments confirmed the circadian expression of important genes predicted in computo by analyzing the data in CircadiOmics. Together, these findings show that CircadiOmics provides a strong foundation for understanding the organization of the circadian transcriptome on a large scale.

CONCLUSION

CircadiOmics allows users to seamlessly compare and analyze multiple omic time-series data sets simultaneously. For example, a user can compare transcripts across species or tissues, or map out relationships between metabolites, proteins, and transcripts to identify underlying oscillatory trends. CircadiOmics has proven to be highly effective for performing end-to-end circadian analyses from hypothesis generation to publication-ready figures creation. This web server has contributed to numerous studies that have been published in high impact journals and in aggregate has been cited in over 190 publications. The server receives approximately 1,000 queries per week from around the world and

to the best of our knowledge is the largest single repository of circadian omic data available. With the quantity and breadth of its growing, high-quality, circadian omic data, CircadiOmics continues to be an invaluable resource for understanding the fundamental landscape of circadian rhythms and how these rhythms are programmed, and can be re-programmed, in cells, tissues, organs, and organisms with significant implications for medicine and therapeutic interventions.

SUPPLEMENTARY DATA

Supplementary Data are available at NAR Online.

FUNDING

NIH [GM123558 to P.B.]. Funding for open access charge: NIH [GM123558 to P.B.].

Conflict of interest statement. None declared.

REFERENCES

- Eckel-Mahan, K. and Sassone-Corsi, P. (2009) Metabolism control by the circadian clock and vice versa. *Nat. Struct. Mol. Biol.*, **16**, 462–467.
- Froy, O. (2011) Circadian rhythms, aging, and life span in mammals. *Physiology*, **26**, 225–235.
- Panda, S., Hogenesch, J.B. and Kay, S.A. (2002) Circadian rhythms from flies to human. *Nature*, **417**, 329–335.
- Patel, V.R., Ceglia, N., Zeller, M., Eckel-Mahan, K., Sassone-Corsi, P. and Baldi, P. (2015) The pervasiveness and plasticity of circadian

- oscillations: the coupled circadian-oscillators framework. *Bioinformatics*, **31**, 3181–3188.
5. Karlsson, B. (2001) Is there an association between shift work and having a metabolic syndrome? results from a population based study of 27 485 people. *Occup. Environ. Med.*, **58**, 747–752.
 6. Antunes, L.C., Levandovski, R., Dantas, G., Caumo, W. and Hidalgo, M.P. (2010) Obesity and shift work: chronobiological aspects. *Nutr. Res. Rev.*, **23**, 155–168.
 7. Froy, O. (2009) Metabolism and circadian rhythms—implications for obesity. *Endocr. Rev.*, **31**, 1–24.
 8. Kohsaka, A., Laposky, A.D., Ramsey, K.M., Estrada, C., Joshu, C., Kobayashi, Y., Turek, F.W. and Bass, J. (2007) High-fat diet disrupts behavioral and molecular circadian rhythms in mice. *Cell Metab.*, **6**, 414–421.
 9. Sharifian, A., Farahani, S., Pasalar, P., Gharavi, M. and Aminian, O. (2005) Shift work as an oxidative stressor. *J. Circadian Rhythms*, **3**, 15.
 10. Turek, F.W., Joshu, C., Kohsaka, A., Lin, E., Ivanova, G., McDearmon, E., Laposky, A., Losee-Olson, S., Easton, A., Jensen, D.R. *et al.* (2005) Obesity and metabolic syndrome in circadian clock mutant mice. *Science*, **308**, 1043–1045.
 11. Shi, S.-, Ansari, T.S., McGuinness, O.P., Wasserman, D.H. and Johnson, C.H. (2013) Circadian disruption leads to insulin resistance and obesity. *Curr. Biol.*, **23**, 372–381.
 12. Kondratov, R.V., Kondratova, A.A., Gorbacheva, V.Y., Vykhovanets, O.V. and Antoch, M.P. (2006) Early aging and age-related pathologies in mice deficient in BMAL1, the core component of the circadian clock. *Genes Dev.*, **20**, 1868–1873.
 13. Dibner, C., Schibler, U. and Albrecht, U. (2010) The mammalian circadian timing system: organization and coordination of central and peripheral clocks. *Annu. Rev. Physiol.*, **72**, 517–549.
 14. Koike, N., Yoo, S.-H., Huang, H.-C., Kumar, V., Lee, C., Kim, T.-K. and Takahashi, J.S. (2012) Transcriptional architecture and chromatin landscape of the core circadian clock in mammals. *Science*, **338**, 349–354.
 15. Ko, C.H. and Takahashi, J.S. (2006) Molecular components of the mammalian circadian clock. *Hum. Mol. Genet.*, **15**, R271–R277.
 16. Hughes, M.E., DiTacchio, L., Hayes, K.R., Vollmers, C., Pulivarthy, S., Baggs, J.E., Panda, S. and Hogenesch, J.B. (2009) Harmonics of circadian gene transcription in mammals. *PLoS Genet.*, **5**, e1000442.
 17. Eckel-Mahan, K.L., Patel, V.R., de Mateo, S., Orozco-Solis, R., Ceglia, N.J., Sahar, S., Dilag-Penilla, S.A., Dyar, K.A., Baldi, P. and Sassone-Corsi, P. (2013) Reprogramming of the circadian clock by nutritional challenge. *Cell*, **155**, 1464–1478.
 18. Eckel-Mahan, K.L., Patel, V.R., Mohney, R.P., Vignola, K.S., Baldi, P. and Sassone-Corsi, P. (2012) Coordination of the transcriptome and metabolism by the circadian clock. *Proc. Natl. Acad. Sci. U.S.A.*, **109**, 5541–5546.
 19. Panda, S., Antoch, M.P., Miller, B.H., Su, A.I., Schook, A.B., Straume, M., Schultz, P.G., Kay, S.A., Takahashi, J.S. and Hogenesch, J.B. (2002) Coordinated transcription of key pathways in the mouse by the circadian clock. *Cell*, **109**, 307–320.
 20. Andrews, J.L., Zhang, X., McCarthy, J.J., McDearmon, E.L., Hornberger, T.A., Russell, B., Campbell, K.S., Arbogast, S., Reid, M.B., Walker, J.R. *et al.* (2010) Clock and BMAL1 regulate MyoD and are necessary for maintenance of skeletal muscle phenotype and function. *Proc. Natl. Acad. Sci. U.S.A.*, **107**, 19090–19095.
 21. Masri, S., Rigor, P., Cervantes, M., Ceglia, N., Sebastian, C., Xiao, C., Roqueta-Rivera, M., Deng, C., Osborne, T.F., Mostoslavsky, R. *et al.* (2014) Partitioning circadian transcription by SIRT6 leads to segregated control of cellular metabolism. *Cell*, **158**, 659–672.
 22. Miller, B.H., McDearmon, E.L., Panda, S., Hayes, K.R., Zhang, J., Andrews, J.L., Antoch, M.P., Walker, J.R., Esser, K.A., Hogenesch, J.B. *et al.* (2007) Circadian and clock-controlled regulation of the mouse transcriptome and cell proliferation. *Proc. Natl. Acad. Sci. U.S.A.*, **104**, 3342–3347.
 23. Storch, K.-F., Lipan, O., Leykin, I., Viswanathan, N., Davis, F.C., Wong, W.H. and Weitz, C.J. (2002) Extensive and divergent circadian gene expression in liver and heart. *Nature*, **417**, 78–83.
 24. Yan, J., Wang, H., Liu, Y. and Shao, C. (2008) Analysis of gene regulatory networks in the mammalian circadian rhythm. *PLoS Comput. Biol.*, **4**, e1000193.
 25. Azzi, A., Dallmann, R., Casserly, A., Rehrauer, H., Patrignani, A., Maier, B., Kramer, A. and Brown, S.A. (2014) Circadian behavior is light-reprogrammed by plastic DNA methylation. *Nat. Neurosci.*, **17**, 377–382.
 26. Haspel, J.A., Chettimada, S., Shaik, R.S., Chu, J.H., Raby, B.A., Cernadas, M., Carey, V., Process, V., Hunninghake, G.M., Ifedigbo, E. *et al.* (2014) Circadian rhythm reprogramming during lung inflammation. *Nat. Commun.*, **5**, 4753.
 27. Li, X.-M., Delaunay, F., Dulong, S., Claustrat, B., Zampera, S., Fujii, Y., Teboul, M., Beau, J. and Lévi, F. (2010) Cancer inhibition through circadian reprogramming of tumor transcriptome with meal timing. *Cancer Res.*, **70**, 3351–3360.
 28. Murakami, M., Tognini, P., Liu, Y., Eckel-Mahan, K.L., Baldi, P. and Sassone-Corsi, P. (2016) Gut microbiota directs PPAR γ -driven reprogramming of the liver circadian clock by nutritional challenge. *EMBO Rep.*, **17**, 1292–1303.
 29. Bellet, M.M., Deriu, E., Liu, J.Z., Grimaldi, B., Blaschitz, C., Zeller, M., Edwards, R.A., Sahar, S., Dandekar, S., Baldi, P. *et al.* (2013) Circadian clock regulates the host response to salmonella. *Proc. Natl. Acad. Sci. U.S.A.*, **110**, 9897–9902.
 30. Gaucher, J., Kinouchi, K., Ceglia, N., Montellier, E., Peleg, S., Greco, C.M., Schmidt, A., Forne, I., Masri, S., Baldi, P. *et al.* (2019) Distinct metabolic adaptation of liver circadian pathways to acute and chronic patterns of alcohol intake. *Proc. Natl. Acad. Sci. U.S.A.*, **116**, 25250–25259.
 31. Ceglia, N., Liu, Y., Chen, S., Agostinelli, F., Eckel-Mahan, K., Sassone-Corsi, P. and Baldi, P. (2018) CircadiOmics: circadian omic web portal. *Nucleic Acids Res.*, **46**, W157–W162.
 32. Pizarro, A., Hayer, K., Lahens, N.F. and Hogenesch, J.B. (2013) CircaDB: a database of mammalian circadian gene expression profiles. *Nucleic Acids Res.*, **41**(Database issue), D1009–D1013.
 33. Li, X., Shi, L., Zhang, K., Wei, W., Liu, Q., Mao, F., Li, J., Cai, W., Chen, H., Teng, H. *et al.* (2018) CirGRDB: a database for the genome-wide deciphering circadian genes and regulators. *Nucleic Acids Res.*, **46**, D64–D70.
 34. Hokamp, K. and Wolfe, K.H. (2004) PubCrawler: keeping up comfortably with pubmed and genbank. *Nucleic Acids Res.*, **32**, W16–W19.
 35. Agostinelli, F., Ceglia, N., Shahbaba, B., Sassone-Corsi, P. and Baldi, P. (2016) What time is it? deep learning approaches for circadian rhythms. *Bioinformatics*, **32**, 3051–3051.
 36. Hughes, M.E., Hogenesch, J.B. and Kornacker, K. (2010) JTK_CYCLE: an efficient nonparametric algorithm for detecting rhythmic components in genome-scale data sets. *J. Biol. Rhythms*, **25**, 372–380.
 37. Kanehisa, M. (2000) Kegg: kyoto encyclopedia of genes and genomes. *Nucleic Acids Res.*, **28**, 27–30.
 38. Paszke, A., Gross, S., Massa, F., Lerer, A., Bradbury, J., Chanan, G., Killeen, T., Lin, Z., Gimelshein, N., Antiga, L. *et al.* (2019) Pytorch: an imperative style, high-performance deep learning library. In: *Advances in Neural Information Processing Systems*. pp. 8026–8037.
 39. Alhassen, S., Chen, S., Alhassen, L., Phan, A., Khoudari, M., De Silva, A., Barhoosh, H., Wang, Z., Parrocha, C., Shapiro, E. *et al.* (2021) Intergenerational trauma transmission is associated with brain metabolotranscriptome remodeling and mitochondrial dysfunction. *Commun. Biol.*, **4**, 783.
 40. Baldi, P., Alhassen, W., Chen, S., Nguyen, H., Khoudari, M. and Alachkar, A. (2021) Large-scale analysis reveals spatiotemporal circadian patterns of cilia transcriptomes in the primate brain. *J. Neurosci. Res.*, **99**, 2610–2624.
 41. Greco, C.M., Koronowski, K.B., Smith, J.G., Shi, J., Kunderfranco, P., Carriero, R., Chen, S., Samad, M., Welz, P.-S., Zinna, V.M. *et al.* (2021) Integration of feeding behavior by the liver circadian clock reveals network dependency of metabolic rhythms. *Sci. Adv.*, **7**, eabi7828.
 42. Greco, C.M., Cervantes, M., Fustin, J.M., Ito, K., Ceglia, N., Samad, M., Shi, J., Koronowski, K.B., Forne, I., Ranjit, S. *et al.* (2020) S-adenosyl-l-homocysteine hydrolase links methionine metabolism to the circadian clock and chromatin remodeling. *Sci. Adv.*, **6**, eabc5629.
 43. Napoli, D., Lupori, L., Mazzotti, R., Sagona, G., Bagnoli, S., Samad, M., Sacramento, E.K., Kirkpartick, J., Putignano, E., Chen, S. *et al.* (2020) MiR-29 coordinates age-dependent plasticity brakes in the adult visual cortex. *EMBO Rep.*, **21**, e50431.
 44. Sato, S., Dyar, K., Trebak, J.T., Linde Basse, A., Schönke, M., Chen, S., Samad, M., Baldi, P., Lutter, D., Zierath, J. *et al.* (2022) Atlas of exercise metabolism reveals time-dependent signatures of metabolic homeostasis. *Cell Metab.*, **34**, 329–345.

45. Sato,S., Basse,A.L., Schönke,M., Chen,S., Samad,M., Altıntaş,A., Laker,R.C., Dalbram,E., Barrès,R., Baldi,P. *et al.* (2019) Time of exercise specifies the impact on muscle metabolic pathways and systemic energy homeostasis. *Cell Metab.*, **30**, 92–110.
46. Brami-Cherrier,K., Lewis,R.G., Cervantes,M., Liu,Y., Tognini,P., Baldi,P., Sassone-Corsi,P. and Borrelli,E. (2020) Cocaine-mediated circadian reprogramming in the striatum through dopamine D2R and PPAR γ activation. *Nat. Commun.*, **11**, 4448.
47. Dyar,K.A., Lutter,D., Artati,A., Ceglia,N.J., Liu,Y., Armenta,D., Jastroch,M., Schneider,S., de Mateo,S., Cervantes,M. *et al.* (2018) Atlas of circadian metabolism reveals System-wide coordination and communication between clocks. *Cell*, **174**, 1571–1585.
48. Kwapis,J.L., Alaghand,Y., Kramár,E.A., López,A.J., Vogel Ciernia,A., White,A.O., Shu,G., Rhee,D., Michael,C.M., Montellier,E. *et al.* (2018) Epigenetic regulation of the circadian gene *per1* contributes to age-related changes in hippocampal memory. *Nat. Commun.*, **9**, 3323.
49. Masri,S., Patel,V.R., Eckel-Mahan,K.L., Peleg,S., Forne,I., Ladurner,A.G., Baldi,P., Imhof,A. and Sassone-Corsi,P. (2013) Circadian acetylome reveals regulation of mitochondrial metabolic pathways. *Proc. Natl. Acad. Sci. U.S.A.*, **110**, 3339–3344.
50. Sato,S., Solanas,G., Peixoto,F.O., Bee,L., Symeonidi,A., Schmidt,M.S., Brenner,C., Masri,S., Benitah,S.A. and Sassone-Corsi,P. (2017) Circadian reprogramming in the liver identifies metabolic pathways of aging. *Cell*, **170**, 664–677.
51. Asher,G. and Sassone-Corsi,P. (2015) Time for food: the intimate interplay between nutrition, metabolism, and the circadian clock. *Cell*, **161**, 84–92.
52. Costello,Z. and Martin,H.G. (2018) A machine learning approach to predict metabolic pathway dynamics from time-series multiomics data. *Npj Syst. Biol. Appl.*, **4**, 19.
53. Braun,R., Kath,W.L., Iwanaszko,M., Kula-Eversole,E., Abbott,S.M., Reid,K.J., Zee,P.C. and Allada,R. (2018) Universal method for robust detection of circadian state from gene expression. *Proc. Nat. Acad. Sci. U.S.A.*, **115**, E9247–E9256.
54. Hughey,J.J., Hastie,T. and Butte,A.J. (2016) ZeitZeiger: supervised learning for high-dimensional data from an oscillatory system. *Nucleic Acids Res.*, **44**, e80.
55. Koronowski,K.B., Kinouchi,K., Welz,P.S., Smith,J.G., Zinna,V.M., Shi,J., Samad,M., Chen,S., Magnan,C.N., Kinchen,J.M. *et al.* (2019) Defining the independence of the liver circadian clock. *Cell*, **177**, 1448–1462.
56. Tognini,P., Samad,M., Kinouchi,K., Liu,Y., Helbling,J.C., Moisan,M.P., Eckel-Mahan,K.L., Baldi,P. and Sassone-Corsi,P. (2020) Reshaping circadian metabolism in the suprachiasmatic nucleus and prefrontal cortex by nutritional challenge. *Proc. Nat. Acad. Sci. U.S.A.*, **117**, 29904–29913.
57. Masri,S., Papagiannakopoulos,T., Kinouchi,K., Liu,Y., Cervantes,M., Baldi,P., Jacks,T. and Sassone-Corsi,P. (2016) Lung adenocarcinoma distally rewires hepatic circadian homeostasis. *Cell*, **165**, 896–909.