

Lawrence Berkeley National Laboratory

LBL Publications

Title

Preliminary clustering properties of the DESI BGS bright targets using DR9 Legacy Imaging Surveys

Permalink

<https://escholarship.org/uc/item/5pd7w99g>

Journal

Monthly Notices of the Royal Astronomical Society, 509(1)

ISSN

0035-8711

Authors

Zarrouk, Pauline
Ruiz-Macias, Omar
Cole, Shaun
[et al.](#)

Publication Date

2021-11-16

DOI

10.1093/mnras/stab2814

Peer reviewed

Preliminary clustering properties of the DESI BGS bright targets using DR9 Legacy Imaging Surveys

Pauline Zarrouk^{1,2*}, Omar Ruiz-Macias^{2,3}, Shaun Cole², Peder Norberg^{2,4}, Carlton Baugh^{2,3}, David Brooks⁵, Enrique Gaztañaga⁶, Ellie Kitanidis⁷, Robert Kehoe⁸, Martin Landriau⁹, John Moustakas¹⁰, Francisco Prada¹¹, Gregory Tarlé¹²

¹ Sorbonne Université, Université Paris Diderot, CNRS/IN2P3, Laboratoire de Physique Nucléaire et de Hautes Energies, LPNHE, 4 place Jussieu, F-75252 Paris, France

² Institute for Computational Cosmology, Department of Physics, Durham University, South Road, Durham DH1 3LE, UK

³ Institute for Data Science, Durham University, South Road, Durham DH1 3LE, UK

⁴ Centre for Extragalactic Astronomy, Department of Physics, Durham University, South Road, Durham DH1 3LE, UK

⁵ Department of Physics & Astronomy, University College London, Gower Street, London, WC1E 6BT, UK

⁶ Institute of Space Sciences (ICE, CSIC), Campus UAB, Carrer de Can Magrans, sn, 08193 Bellaterra (Barcelona), Spain

⁷ Department of Physics, University of California, Berkeley, 366 LeConte Hall, Berkeley, CA 94720, USA

⁸ Department of Physics, Southern Methodist University, 3215 Daniel Ave., Dallas, TX, 75205, USA

⁹ Lawrence Berkeley National Laboratory, 1 Cyclotron Road, Berkeley, CA 94720, USA

¹⁰ Department of Physics and Astronomy, Siena College, 515 Loudon Road, Loudonville, NY 12211, USA

¹¹ Instituto de Astrofísica de Andalucía (CSIC), Glorieta de la Astronomía, s/n, E-18008 Granada, Spain

¹² Department of Physics, University of Michigan, Ann Arbor, MI 48109, USA

Accepted XXX. Received YYY; in original form ZZZ

ABSTRACT

We characterise the selection cuts and clustering properties of a magnitude-limited sample of bright galaxies that is part of the Bright Galaxy Survey (BGS) of the Dark Energy Spectroscopic Instrument (DESI) using the ninth data release of the Legacy Imaging Surveys (DR9). We describe changes in the DR9 selection compared to the DR8 one as explored in Ruiz-Macias et al. (2021). We also compare the DR9 selection in three distinct regions: BASS/MzLS in the north Galactic Cap (NGC), DECaLS in the NGC, and DECaLS in the south Galactic Cap (SGC). We investigate the systematics associated with the selection and assess its completeness by matching the BGS targets with the Galaxy and Mass Assembly (GAMA) survey. We measure the angular clustering for the overall bright sample ($r_{\text{mag}} \leq 19.5$) and as function of apparent magnitude and colour. This enables to determine the clustering strength r_0 and slope γ by fitting a power-law model that can be used to generate accurate mock catalogues for this tracer. We use a counts-in-cells technique to explore higher-order statistics and cross-correlations with external spectroscopic data sets in order to check the evolution of the clustering with redshift and the redshift distribution of the BGS targets using clustering-redshifts. While this work validates the properties of the BGS bright targets, the final target selection pipeline and clustering properties of the entire DESI BGS will be fully characterised and validated with the spectroscopic data of Survey Validation.

Key words: cosmology: observations – distances and redshifts – large-scale structures – dark energy

1 INTRODUCTION

Building ever larger and more accurate 3D maps of the large-scale structure of the Universe is the key to understanding the formation and evolution of the Universe, and, in particular, the late-time acceleration of its expansion. However, the mechanism which is responsible for this acceleration remains a major unknown in modern

cosmology. In order to account for this discovery, the cosmological constant Λ was re-introduced in Einstein’s equations of General Relativity, such that it represents the major component of the current energy content of the Universe. The observations could also be explained by more complex dark energy models with time-dependent properties or even a modification of General Relativity on cosmological scales, (e.g. Linder & Cahn 2007; Guzzo et al. 2008; Alam et al. 2020).

* E-mail: pauline.zarrouk@lpnhe.in2p3.fr

laboration et al. 2016b) has been designed to meet the goal of elucidating the cosmic acceleration and it is the first of the new generation of galaxy surveys, the so-called Stage IV dark energy experiments using the terminology of the Dark Energy Task Force report (Albrecht et al. 2006), that has already started taking data. DESI is a multi-fiber spectrograph installed on the Mayall 4-meter telescope at Kitt Peak, Arizona, in the United States, which can collect 5,000 spectra simultaneously using robot fiber positioners.

In order to create these 3D maps, we first require imaging surveys that provide the targets we are going to put a fiber on with the DESI instrument so that we can extract accurate and reliable positional information in the radial direction. We use three different imaging surveys that provide optical data over 20,000 deg² for DESI targeting and constitute the Legacy Imaging Surveys (Dey et al. 2019): i) the Beijing-Arizona Sky Survey (BASS) imaged regions at $Dec \geq +32$ deg in the Northern Galactic Cap (NGC), in the g and r bands, ii) the Mayall z -band Legacy Survey (MzLS) imaged the $Dec \geq 32$ deg region and iii) the DECaLS program that made use of other DECam data within the Legacy Surveys (LS) footprint.

DESI will conduct dark time and bright time programs in parallel. During the dark time program four main target classes will be observed: about 6 million luminous red galaxies (LRG) in the redshift interval $0.4 < z < 1.0$, 17 million [OII] emission-line galaxies (ELG) in $1.0 < z < 1.6$ and 2.5 million quasars (QSO), where quasars with $z < 2.1$ will serve as direct tracers of the matter density field and quasars with $2.1 < z < 3.5$ will provide Lyman- α absorption features in order to probe the distribution of neutral hydrogen in the intergalactic medium. During bright time, when lunar conditions are too bright for good observations of these faint objects, DESI will obtain 10 million spectra of bright galaxies up to $z \sim 0.4$ (Bright Galaxy Survey, BGS) and a sample of local stars (Milky Way Survey, MWS). The DESI footprint will cover 14, 000 deg².

Here, we focus on the DESI BGS program that will likely be comprised primarily of galaxies selected to a limiting magnitude. The dark energy science goals of the BGS are to produce a data set that allows the best achievable measurements of Baryon Acoustic Oscillations, (BAO, Eisenstein et al. 2005; Cole et al. 2005) and Redshift-Space-Distortions (RSD, Jackson 1972; Kaiser 1987) at redshifts $z \leq 0.4$. Although the statistical precision of BGS clustering measurements is usually lower than that of the dark-time surveys, working near $z = 0$ gives maximum leverage against higher redshift measurements and CMB constraints. The exceptionally high sampling density, low-redshift sample and the wide range of galaxy bias represented in the BGS offer new opportunities for innovative analysis techniques, such as multi-tracer methods that measure common Fourier modes of the density field using tracers of different bias and tests of systematic effects as different tracers with different clustering properties should yield compatible cosmological constraints (McDonald & Seljak 2009; Blake et al. 2013; Ross et al. 2014). The DESI BGS will also enable novel investigations of structure growth using galaxy groups and clusters or combination with galaxy-galaxy weak lensing. By spanning a wide range of galaxy properties, the DESI BGS will also be an extraordinary resource for studying the properties of galaxies and galaxy groups and the relations between galaxies and dark matter, advancing our understanding of how primordial fluctuations grow into the rich structure of galaxies observed today.

In order to achieve these science goals, the target selection pipeline, the imaging systematics and the resulting clustering properties of the BGS targets need to be tested and validated. The purpose of this paper is to present the implications of improvements in the

imaging data processing in the context of selecting a magnitude-limited galaxy sample for spectroscopic observations of large-scale structure. We present the motivation for several changes to selection criteria since the most recent study based on previous imaging reduction (Ruiz-Macias et al. 2020, 2021) and the clustering characteristics of the resulting magnitude-limited sample. The studies presented here rely only on the imaging data collected for identification of DESI spectroscopic targets; final target selection for the BGS program will be presented in a future paper that presents the full interpretation of sample selection derived from early spectroscopic observations from DESI. A complementary study by Kitanidis et al. (2019) examined the impact of imaging systematics on the selection and clustering of targets in the LRG, ELG and QSO DESI surveys, using an earlier release of the Legacy Survey imaging data.

The paper is organised as follows. In Section 2, we present the imaging data and target selection cuts we use to select our targets that relies on the work we did first with DECaLS DR8 in our companion paper Ruiz-Macias et al. (2021) and we investigate the potential systematics. In Section 3, we present several angular clustering properties of the BGS targets and Section 4 is dedicated to the cross-correlation measurements with external spectroscopic datasets. Our conclusion can be found in Section 5.

2 BGS TARGET CATALOGUE USING DR9

A candidate BGS selection using DR8 DECaLS was first explored in (Ruiz-Macias et al. 2021) and also in a research note (Ruiz-Macias et al. 2020). The core of this selection for the bright sample remains unchanged: a bright sample at $r < 19.5$ (BGS Bright) and a faint sample at $19.5 < r < 20$ (BGS Faint). From here out, in Section 2.1 we first describe the changes in the imaging pipeline for DR9 and the changes in the target selection cuts they lead and then we present a comparison between BASS/MzLS and DECaLS in Section 2.2. We quantify the impacts of the changes between DR8 and DR9 for the masking around bright stars in Section 2.3 and for the large galaxies in Section 2.4.

2.1 Changes between DR8 and DR9

2.1.1 Changes in the imaging pipeline

Compared to its predecessor, DR9 incorporates some major and minor changes that affect the photometry of the objects, and hence the target selection. These changes are incorporated in legacypipe¹, which is the DESI Imaging Legacy Surveys data reduction pipeline. Below we list the most important changes relevant for BGS target selection:

(i) *Iterative detection*: After the first round of fitting, TRACTOR conducts a second round of detections over the data-model residuals with the aim of finding additional sources.

(ii) *Extended PSF model*: An extended PSF model is used to subtract the wings of bright stars from DECam images only.

(iii) *Sersic fitting model*: The composite (COMP) morphological model has been replaced by a Sersic profile (SER). A source is classified as SER if a Sersic profile provides a better fit than other profiles, PSF, EXP and DEV, as quantified by a χ^2 that takes account of additional free parameters of the Sersic fit.

¹ <https://github.com/legacysurvey/legacypipe>

(iv) *Relaxed Gaia PSF criterion*: TRACTOR forces *Gaia* objects to be fitted as PSF *Gaia* sources if they meet the condition ($G \leq 18$ & $AEN < 10^{0.5}$) OR ($G \leq 13$), that was previously set to ($G \leq 19$ & $AEN < 10^{0.5}$) OR ($G \leq 19$ & $AEN < 10^{0.5+0.2(G-19)}$). Here G is *Gaia* DR2 G -band magnitude, and AEN is the *Gaia* astrometric excess noise parameter.

(v) *Pre-fitting for large sources*: Regions around large galaxies and globular clusters have their own local source extraction, which is performed separately from the normal TRACTOR run. The parent catalogues of these objects have improved extensively since DR8 and this constitutes the Siena Galaxy Atlas 2020² (SGA 2020 Moustakas et al. 2021).

2.1.2 Changes in the BGS target selection

These improvements led to changes in the target selection pipeline that are summarised below:

(i) *Bright stars*: the size of the masking radius around bright stars is reduced by a factor of 2. In Section 2.3, we investigate the consequences of such a change in the BGS selection

(ii) *Large galaxies*: the size of the masking radius around large galaxies in DR9 has increased from roughly 10 arcsec to 30 arcsec, however the pre-fitting for large sources led to major improvements in the photometry extraction of these objects which allows us not to apply this mask in DR9. Moreover, we remind the reader that in (Ruiz-Macias et al. 2021), we assess the completeness of the previous selection using DR8 by matching the BGS targets with GAMA DR4 and found that we were missing about 25 true galaxies/deg².

(iii) *Quality cuts (QC)*: the "quality cuts" (QC) defined in (Ruiz-Macias et al. 2021) for DECaLS DR8 are cuts in $FRACMASKED_i < 0.4$, $FRACIN_i > 0.3$, $FRACFLUX_i < 5$, where $i \equiv g, r$ or z . $FRACIN$ is used to select sources for which a large fraction of the model flux lies within the contiguous pixels to which the model was fitted, $FRACFLUX$ is used to reject objects that are swamped by flux from adjacent sources, and $FRACMASKED$ is used to veto objects with a high fraction of masked pixels. The overall improvement in the quality of the photometry assessed in next sections 2.1.4 and 2.1.3 allows us to adopt a less conservative definition of the QC. Instead of applying these cuts in the three bands, we require only two out of three bands (see Eq. 1). For posterior analysis, we will refer to DR8 QC as old FRACS, and for the QC in this work as just new FRACS. The new FRACS is a subset of around 1/3 of the old FRACS. In Section 2.1.4, we assess again the completeness with respect to GAMA and we remind the reader that for DR8 we were missing about 70 true galaxies/deg² because of old FRACS. In order to assess the current selection given by equation 1, we perform an imaging visual inspection (VI) with examples of targets flagged by the old FRACS. The details of the VI set up and results are given in Section 2.1.3.

$$\begin{aligned} FRACMASKED_i &< 0.4, \\ FRACIN_i &> 0.3, \\ FRACFLUX_i &< 5, \\ \text{where } i &= \{g, r\}, \{g, z\} \text{ or } \{r, z\}. \end{aligned} \quad (1)$$

Compared with the BGS selection defined for DECaLS DR8, the current BGS selection with DR9 increases the overall target

Table 1. Target density in objects/deg²(η), increase in target density in objects/deg²(η) of the current BGS target selection (DR9) compared with the BGS selection defined for DECaLS DR8 and the effective area (A_{eff}) in deg² after accounting for the spatial masking. We show results for BGS BRIGHT and BGS FAINT each divided into three regions; BASS/MzLS, DECaLS NGC and DECaLS SGC.

BGS	BASS/MzLS	DECaLS NGC	DECaLS SGC
η_{bright}	813.4	875.6	839.0
η_{faint}	569.4	598.8	581.1
$\Delta\eta_{\text{bright}}$	+12.7	+14.1	+12.5
$\Delta\eta_{\text{faint}}$	+ 7.7	+ 8.2	+ 7.3
A_{eff}	4493	5263	4326

density by ~ 20 objects/deg². Table 1 shows the gain in target density for BGS BRIGHT and BGS FAINT and for the three regions, together with the resulting target density for this selection and the corresponding effective area after accounting for the spatial masking.

2.1.3 Visual inspection on the imaging

The goal of perform an imaging VI is to assess our selection and reduce human uncertainties in the classification by involving as many people as possible. For this purpose, we create the LSVI³ (Legacy Surveys Visual Inspection), an interactive web framework that automatize this process. LSVI essentially create postage stamps galleries of the Legacy Surveys Sky Viewer web site viewer⁴ (D. Lang in prep.) with their corresponding classification labels.

To assess the the conservative selection of the QC we adopt for DR9, we took a sparsely selected sample of 2000 BGS targets in a ~ 420 deg² area in DECaLS DR9 flagged by the old FRACS. This sample accounts for ~ 35 per cent out of the total available in this area. The classification labels are, GAL: The object is a galaxy; STAR The object is a star; BT: The object is contaminated by (or is a fake source from) a bleed trail; DS/H: The object is contaminated by (or is a fake source from) a diffraction spike or a star halo; FRAG: The object is spurious from a fragmented large galaxy; JUNK: The object does not fit in any of the previous classifications but it is clearly spurious; UNK: The object does not fit in any of the previous classifications and it's unclear whether it is a galaxy or not; NI: The object has not yet been inspected.

A total of six people participated in the classification, and the results were classified in three categories: i) confirmed galaxy (CG): two or more people say the object is a galaxy and less than two people say it is anything but a galaxy; ii) confirmed non-galaxy (CNG): two or more people say the object is anything but a galaxy and less than two people say it is a galaxy; and iii) inconsistent classification (IC): is neither of previous categories. Out of the 2000 objects, 35 per cent are CG, 43 per cent are CNG, and 22 per cent are IC. The CNG include stars and other artifacts such as bleed trails, diffraction spikes, stellar halos and fragmented images. There is no easy way to isolate the CG while getting rid of spurious sources. However, for the subset of these old FRACS, the new FRACS defined by equation 1, results show that this subset get rid of only around 10 per cent of the CG, around 60 per cent of the CNG, and around 30 per cent of the IC.

³ <https://lsvi-webtool.herokuapp.com/>

⁴ Legacy Surveys / D. Lang (Perimeter Institute) legacysurvey.org/viewer

² <https://sga.legacysurvey.org>

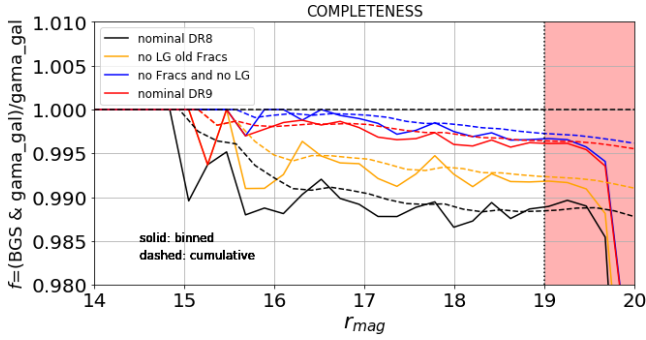


Figure 1. Completeness of the BGS targets according to different choices of target selection cuts with respect to GAMA which can be considered as complete for $14 < r_{\text{SDSS}} < 19.8$.

2.1.4 Validation with GAMA

In DR8 DECaLS, we assess the completeness of our BGS catalogue with respect to GAMA, whose main target sample (Baldry et al. 2017) is highly complete for galaxies with $14 < r_{\text{SDSS}} < 19.8$, where r_{SDSS} is the SDSS Petrosian r -band magnitude, with 98.85% of the objects in the catalogue having good redshifts with a quality flag $\text{NQ} \geq 3$, after applying a redshift cut at $z > 0.002$ to remove the remaining stars. We match the BGS targets with the GAMA Main Survey DR4 galaxy catalogue⁵ using a maximum linking length of 1 arcsec and we focus on three of the five GAMA fields: G09, G12, G15. First, we cross-matched the GAMA catalogue with the Legacy Imaging Surveys DR9. This results in a matched catalogue of 1007.5 objects/deg² in a 178 deg² area, which represents 99.8 per cent of all the GAMA galaxies. We define four different BGS selections to test the completeness with respect to GAMA. The four samples are: i) DR8 cuts (nominal DR8), ii) nominal DR9 with no LG mask and new FRACS (current selection), iii) no LG mask and old FRACS, iv) no LG mask and no FRACS. From the total of 1007.5 objects/deg² matches between DECaLS and the LS DR9, the nominal DR9 and the no LG, no FRACS samples yield the most BGS targets with 1,003 and 1,004 objects/deg² respectively. Next in order of number of matches comes the no LG, old FRACS sample with a matched BGS sample of 998 objects/deg². Finally, the nominal DR8 sample gives the fewest matches with 995 objects/deg².

Fig. 1 shows the completeness with respect to GAMA of the four samples obtained by computing the ratio of BGS matched with GAMA over the GAMA objects. These results show that the sample with no LG and no FRACS has the highest completeness with respect to GAMA, followed by the nominal DR9 sample; both these samples have more than 99.5 per cent completeness. However, if we had taken the ratio of the BGS matched with GAMA over the total of BGS targets, we would find that the nominal DR9 sample has the highest completeness, which can be interpreted as being the sample with the least contamination. Focusing on our current BGS selection, the nominal DR9 sample, there are 4.5 objects/deg² from GAMA that are missing in BGS, of which 3.8 objects/deg² are due to the star-galaxy separation, and the remaining 0.7 objects/deg² comes from the QCs. Based on these results, we can conclude that our current BGS sample has a completeness with respect to GAMA which is above 99.5%.

⁵ This is an unreleased version that the GAMA collaboration made available to us. It is essentially the same as GAMA DR3, but with more redshifts.

2.2 Comparison of DR9 DECaLS and DR9 BASS/MzLS

Looking at the survey depth in each band, characterised by the 5σ AB magnitude detection limit for a 0.45 arcsec REX galaxy profile, the DECaLS g and r bands go deeper than the equivalent bands in BASS. In the z -band, DECaLS and MzLS have a similar depth. Whilst, for the purpose of this work these depths are sufficient for the BGS selection, we are interested here to see how the magnitudes measured in the same bands differ between the surveys, which were conducted with different instruments at different telescopes.

DECaLS and BASS/MzLS overlap in the NGC at around $Dec = 32$ deg within $29 < Dec < 35$ deg. For this analysis we looked at a 76 deg² area in the region $200 \text{ deg} < RA < 240$ deg and $29 \text{ deg} < Dec < 35$ deg. The area was computed using a random catalogue with density of 15,000 objects per deg² and a HEALPIX grid of side 1024. In order to compare the photometry in DECaLS and BASS/MzLS, we find all target matches within a distance of 0.5 arcsec. To avoid incomplete regions, we require $\text{NOBS}_i > 0$ for $i = g, r$ and z for the three surveys. After the match, we define the BGS objects for the three surveys using and we find agreement between 1,328 BGS objects/deg², and disagreement for 66 objects/deg² that are in BGS in DECaLS but which are not BGS in BASS/MzLS; conversely there are 28 BGS objects/deg² in BASS/MzLS that are not in the DECaLS BGS.

We find that most of the disagreements are due to a shift in the r -band magnitude. Fig. 2 shows $r_{\text{DECaLS}} - r_{\text{BASS-MzLS}}$ as a function of $(g-r)_{\text{BASS}}$ for two samples: one with only stars in both BASS/MzLS and in DECaLS, and the other with only BGS objects. We can fit the magnitude difference as a linear function in $(g-r)_{\text{BASS}}$. Equations 2 and 3 show these r -band photometry transformations of the BASS/MzLS system to the DECaLS system for BGS matches (r'_{gg}) and for star matches (r'_{ss}), respectively

$$r'_{\text{gg}} = r_{\text{BASS}} - 0.039(g-r)_{\text{BASS}} + 0.011 \quad (2)$$

$$r'_{\text{ss}} = r_{\text{BASS}} - 0.035(g-r)_{\text{BASS}} + 0.017. \quad (3)$$

From equations 2 and 3 we can see that the r -band magnitude in BASS/MzLS is fainter than in DECaLS. The r -band magnitude offset is $r_{\text{BASS}} - r_{\text{DECaLS}} \approx 0.026$ for BGS objects. In Fig. 3 we show the number counts as a function of r -mag for BGS objects in both regions in the overlapping 76 deg² region and compare this with number counts of BASS/MzLS after correcting the r -mag by applying equations 2 and 3. These results show that both regions can achieve similar target densities if we apply a linear transformation in BASS/MzLS, increasing the overall target density to 1430 objects/deg². Compared to the 1383 objects/deg² without the colour correction, this represents an increase of 3.4 per cent.

2.3 Bright stars

The masking radius around bright stars has been reduced by a factor of two in DR9 compared to DR8. Fig. 4 shows the stacked average density of BGS close to bright stars in BASS/MzLS. Distances have been rescaled to the masking radius $R_{\text{BS}}(m)$ where the DR9 masking radius is represented by the smaller black circle while the radius applied in DR8 is shown by the larger red circle. Contamination around bright stars seems to be higher for the brightest stars ($8 < m < 12$) but the density profile of BGS objects (solid red line in Fig. 4) shows that the contamination outside the DR9 masking radius is negligible. Results for DECaLS look similar to Fig. 4 and we believe it is not necessary to include these results. Overall, in

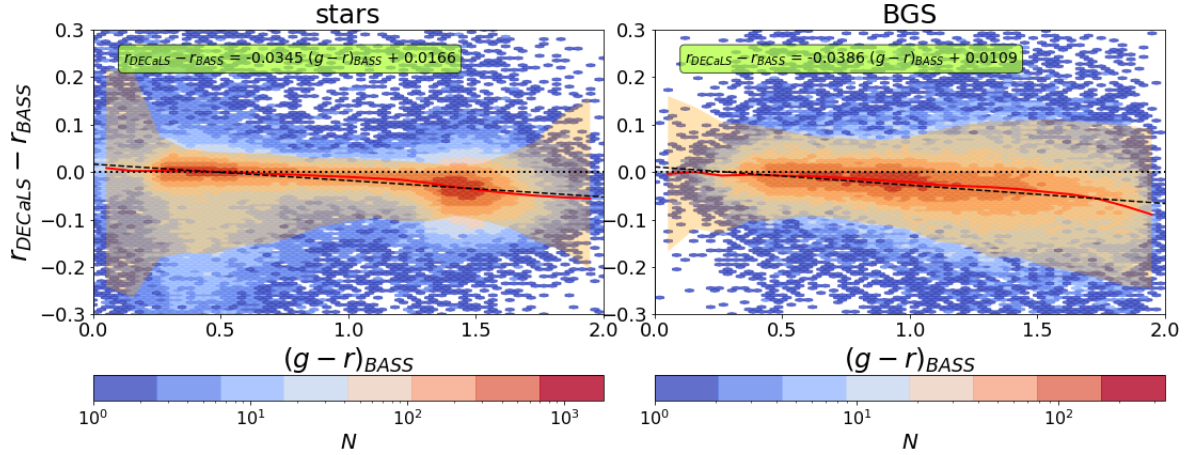


Figure 2. DECaLS and BASS/MzLS matched Stars (left) and BGS targets (right) showing $r_{\text{DECaLS}} - r_{\text{BASS-MzLS}}$ as a function of $(g-r)_{\text{BASS}}$ colour. Matched stars are shown in the left-hand side while BGS in the right-hand side. Stars are as defined by our *Gaia* star-galaxy classification. The colour bar indicates the number of objects within the hexagonal cell. The red solid line shows the median and the orange shaded region shows the the 3 and 97 percentiles. The black dashed lines show the best straight line fits to the median relation as given in the green boxes above.

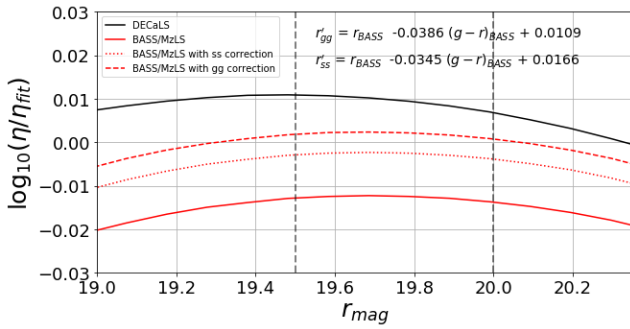


Figure 3. The BGS target density (η) divided by the the target density of a fiducial linear fit, $\log_{10}(\eta_{\text{fit}}) = 0.46 \times r_{\text{mag}} + 6.10$. The solid black and red lines show the DECaLS and BASS/MzLS BGS target densities within their full footprints. The red dashed and dotted lines shows BASS/MzLS BGS target density after applying the r -mag transformation equations 2 and 3 respectively.

DECaLS and BASS/MzLS, the reduction in the masking radius increases targetable area, and the BGS sample increase by around 28 objects/deg².

In order to investigate the potential systematic effect associated with bright stars, we measure the angular cross-correlation between the BGS targets after masking and the stellar catalogue for BASS/MzLS, DECaLS-NGC and DECaLS=SGC. We tested several configurations for the target selection cuts: i) with and without applying the masking around large galaxies (LG), ii) considering the three options for the ‘FRACS cut’: i) not applying the FRACS (no FRACS), ii) applying the conservative definition of DR8 (old FRACS), iii) applying a less conservative definition (new FRACS). The consequences of these different choices for the measured angular cross-correlation function of the BGS targets with *Gaia* stars are shown in Fig. 5. As expected, the large galaxy mask has no effect on the stellar contamination and the other configurations show a negligible impact given the error bar. Therefore, we conclude that none of these options should affect significantly the angular clustering of the BGS targets, as confirmed later in Section 3.1.

Fig. 6 shows the ratio between the cross-correlation function

of BGS targets and stars, and the auto-correlation function of the stars. At large angular scales, this ratio gives an estimate of the fraction of stellar contamination in the BGS sample. The error bars are estimated using 100 jackknife regions for both the cross- and auto-correlation functions. The BGS targets seem uncorrelated with stars, indeed although stars represent the main systematic in the BGS selection, we note that the effect remains small compared with that seen for other DESI targets, such as the Emission Line Galaxies (ELG), which are fainter, or with Quasars (QSO), that are point-source objects. The correlation of these dark-time DESI targets with stars was shown in Kitanidis et al. (2019). Fig. 6 shows that there is no significant stellar contamination in the BGS sample, which is also consistent with the results from the star-galaxy separation when considering *Gaia* objects. Furthermore, the DESI Survey Validation (SV) selection will test the possibility to relax the star-galaxy criterion .

2.4 Large galaxies

Further changes in the BGS selection include not masking around the Large Galaxies of the Siena Galaxy Atlas (SGA, Moustakas, Lang, et al. in preparation), and a revisiting of the quality cuts (QCs). The SGA galaxy catalogue has gone through a series of improvements and TRACTOR was run separately in regions within the confines of these galaxies, which has led to a reduction in the number of spurious objects around these galaxies in DR9 compared to DR8. These spurious objects were due to large galaxies not being appropriately fitted by TRACTOR and as a result, these galaxies were fragmented in many fake sources. In addition to that, in DR8, TRACTOR forced PSF fits to all the objects around large galaxies, compromising the photometry of the potential BGS targets in these regions and forcing us to mask them. In DR9, we have visually inspected around 1 per cent of the BGS within the SGA mask and found ~ 50 per cent of them are galaxies and the remained ~ 50 are either stars or fragmented galaxies. We have decided to target all these to ensure completeness for clustering studies. We can reject spurious objects at a later stage. Using GAMA DR4, we match BGS with GAMA and for the matched objects within the LG mask, we were able to identify that around 40 per cent are spectroscopically confirmed galaxies that would otherwise be

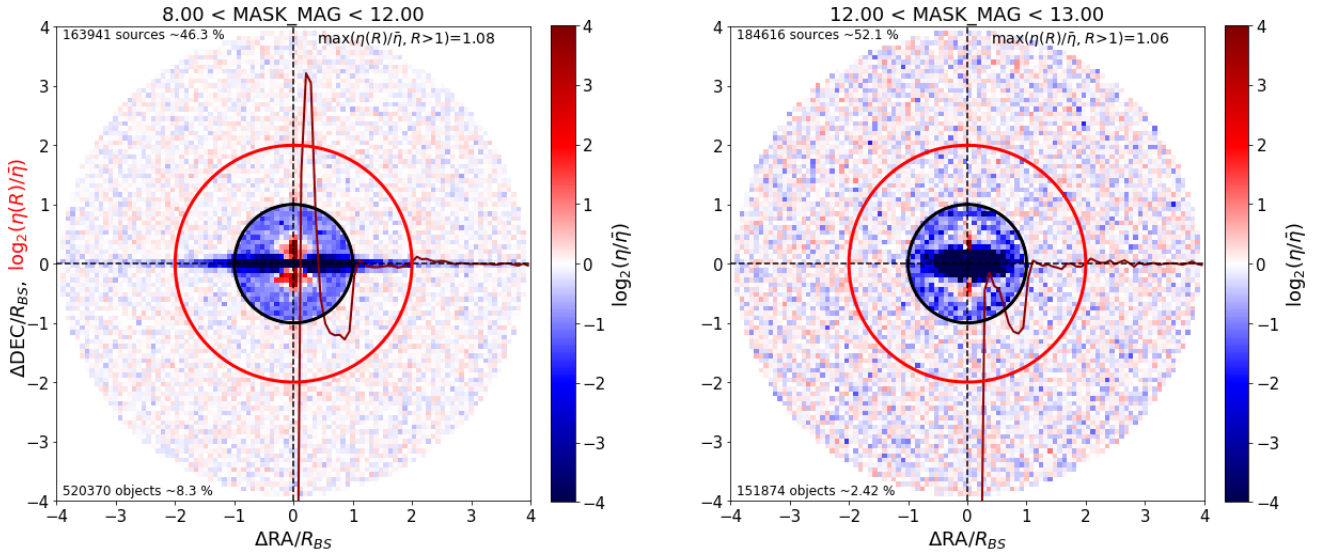


Figure 4. 2D histograms of the positions of BGS objects from BASS/MzLS relative to their nearest Bright Star (BS) taken from the *Gaia* and Tycho catalogues down to *G*-mag and visual magnitude MAG_{VT} of 13 respectively. These stacks are performed in magnitude bins in the bright stars catalogue from magnitude 8 to 12 (left) and 12 to 13 (right). The stacks are made using angular separations rescaled to the masking radius function of DR9 (inner black circle), which means that objects within a scaled radius of 0 to 1 will be masked out by the BS veto while objects with $R = r/R_{BS} > 1$ will not (here $r^2 = (\Delta RA \cos(Dec))^2 + \Delta Dec^2$). The colour scale shows the ratio of the density per pixel (η) to the mean density ($\bar{\eta}$) within the shell $1.1 < r/R_{BS} < 4$. The density ratio is shown on a \log_2 scale where red shows over-densities, blue corresponds to under-densities and white shows the mean density. The outer red circle shows the masking radius of the LS DR8 data. The red solid line shows the radial density profile on the same scale as the colour distribution $\log_2(\eta(R)/\bar{\eta})$ where $\eta(R)$ is the target density within the annulus at radius R of width $\Delta R \sim 0.06$.

rejected by the LG mask. The comparison with GAMA shows that the QCs applied in DR8 erroneously rejected some sources that are galaxies: 80 per cent of the sources removed by the FRACIN, QC turn out to be galaxies, along with 50 per cent of the objects removed by the FRACMASKED, QC and 20 per cent of objects in the case of FRACFLUX.

Large galaxies correspond to the brightest BGS galaxies in our sample. By comparing the angular cross-correlation between the large galaxies and BGS faint targets (with $18 < r < 19$ for instance) and the angular cross-correlation between the BGS bright targets ($15 < r < 16$ for instance) with the same BGS faint galaxies, we can estimate whether we have an excess or deficit of BGS targets in the vicinity of the large galaxies due to spurious or mis-classified sources. A similar test for DECaLS DR8 was performed in Ruiz-Macias et al. (2021) and those results are shown in black on the top panel of Fig. 7. This panel also shows the result of this test when masking around the large galaxies in DR9, which also includes BASS/MzLS. In DR9, the median large galaxy masking radius is about 30 arcsec (shown by the dotted vertical line in Fig. 7) which is twice the size of that used in DR8 as one can see from the figure where the black curve drops at smaller scale. As expected, and as we found in DECaLS DR8, when masking is applied the dashed curves that correspond to the cross-correlation function between the large galaxies and the BGS faint targets drop dramatically on scales below the masking radius, meaning that we are missing BGS targets on these scales. The bottom panel of Fig. 7 shows a similar study but without applying the large galaxy mask. The solid and dashed curves now agree much better on scales below 30 arcsec, meaning that we recover the BGS targets in the vicinity of the large galaxies. However, the overall amplitude seems larger than what is obtained from the MXXL lightcone for BGS (Smith et al. 2017) when measuring the cross-correlation function between the

bright and faint BGS galaxies in the simulation (grey curve). This suggests that the BGS selection contains some spurious objects in the vicinity of the large galaxies that could be removed by additional cuts. In Fig. 8, we show the impact on the cross-correlation signal at scales below the size of the masking radius around large galaxies of different choices for defining a quality cut based on FRACS. In Section 2.1.2, we presented what this set of cuts corresponds to and in DR8 we adopted a conservative definition (old FRACS), with DR9 we investigated the effect of adopting a less conservative cut (new FRACS) or no cut at all (no FRACS). Not applying this cut increases the fraction of contamination around large galaxies which translates into a higher amplitude at these scales compared to MXXL and the other cases. The conservative approach adopted in DR8 seems to provide the best agreement with the results from the simulated lightcone. However, in the next section we will see that it also removes true BGS targets. As a consequence, there is a balance to be found between keeping true BGS targets while removing the spurious objects around the large galaxies. For this reason, we have plans to visually inspect a random fraction of the BGS targets in the vicinity of the large galaxies using the LSVI web tool (see Section 2.1.3) with the goal of determining the exact fraction of spurious objects and identifying common properties that could define more suitable cuts.

3 ANGULAR CLUSTERING MEASUREMENTS

While many cosmological studies require knowledge of the three-dimensional distribution of galaxies, the angular clustering also provides valuable information about both cosmology and the galaxy-halo connection. In Section 3.1, we present a detailed study of the angular correlation function that includes a comparison with theory and the MXXL lightcone of Smith et al. (2017) for BGS. In

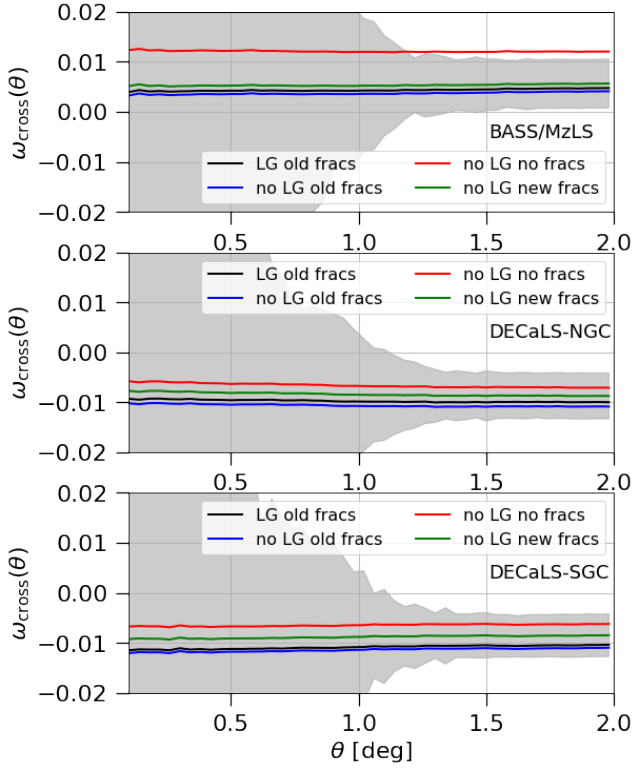


Figure 5. Angular cross-correlation function between the BGS Bright targets in each region and *Gaia* stars for different configurations of the BGS target selection. The *Gaia* stars have $12 < G < 17$. The shaded region shows the $1\text{-}\sigma$ error estimated using a jackknife resampling of the data for "LG old frags" configuration only.

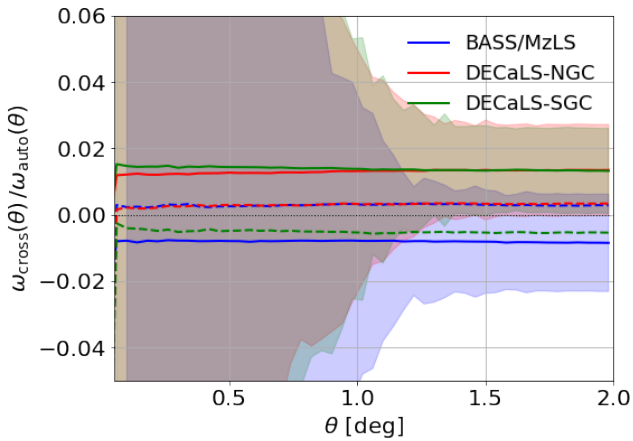


Figure 6. Ratio between the angular cross-correlation function between the BGS targets and *Gaia* stars and the auto-correlation function of *Gaia* stars. The dashed line shows this ratio after removing regions of high stellar density (stellar density < 1000 objects/deg 2). The shaded region shows the $1\text{-}\sigma$ error estimated using a jackknife resampling of the data. The *Gaia* stars have $12 < G < 17$.

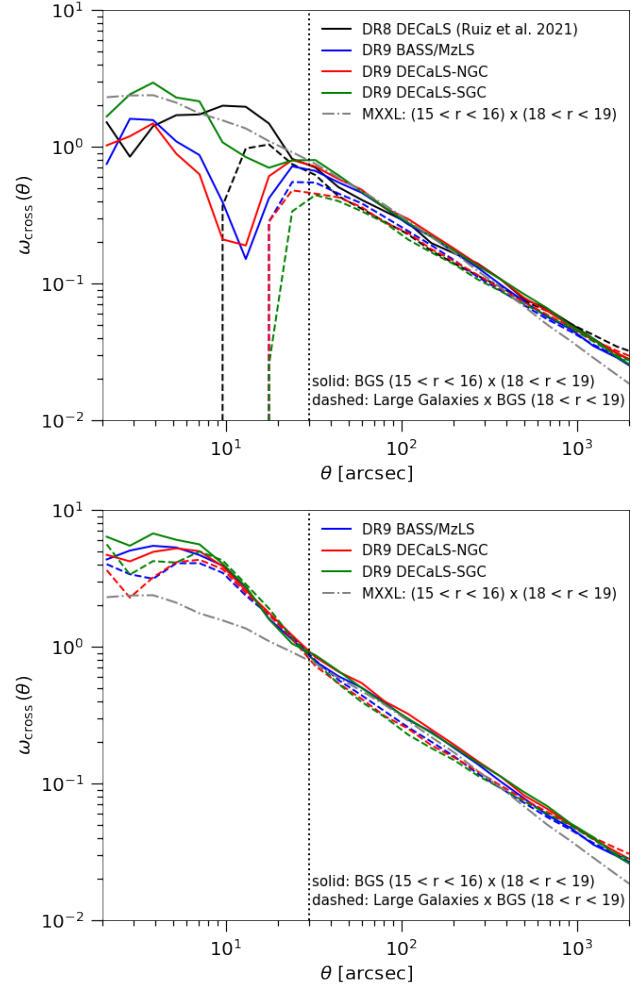


Figure 7. The angular cross-correlation function measured between faint BGS targets in $18 < r < 19$ and large galaxies from the LSLGA (dashdotted) and between the same faint BGS targets and brighter BGS targets in $15 < r < 16$ (solid), the magnitude range in which most of the large galaxies reside. We also compare with the angular cross-correlation between these two bins in apparent magnitude measured in the MXXL lightcone (dashed). The vertical dotted line shows the mean LG mask radius which is about 20 arcsec. Top: with applying the large galaxy mask when selecting the BGS targets. Bottom: without applying the large galaxy mask.

particular, we study the consistency between the BASS/MzLS and DECaLS BGS catalogues in terms of the angular correlation function (Section 3.1.2), then we analyse the clustering as a function of magnitude (Section 3.1.3) and as a function of colour (Section 3.1.4). Finally, in Section 3.2, we investigate the higher-order statistics of the galaxy density field using counts-in-cells.

3.1 Angular correlation function

3.1.1 Methodology

We measure the angular correlation function, $w(\theta)$, of the BGS targets using the estimator of [Landy & Szalay \(1993\)](#):

$$w_{\text{LS}}(\theta) = \frac{D_1 D_2(\theta) - D_1 R_2(\theta) - D_2 R_1(\theta) + R_1 R_2(\theta)}{R_1 R_2(\theta)}, \quad (4)$$

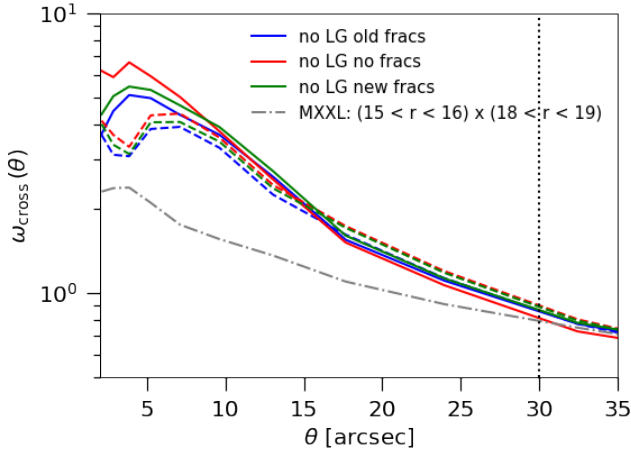


Figure 8. Same as in Fig. 7 but here we focus on scales below the masking radius around large galaxies and we show the impact of different quality cuts (frags). These quality cuts aim at removing spurious objects in the vicinity of the large galaxies without removing true BGS targets.

where DD , DR and RR are, respectively, the data-data, data-random and random-random pair counts at average separation θ . The random catalogue is provided by the Legacy Imaging Surveys⁶. The form given in equation 4 is for the cross-correlation of two samples. For the auto-correlation function, the labels 1 and 2 are indistinguishable and this simplifies to $w_{LS}(\theta) = (DD - 2DR + RR)/RR$. We used the cross-correlation version of the estimator in Section 2.3 (BGS targets and stars) and in Section 2.4 (BGS targets and Large Galaxies). In Section 4, we will cross-correlate the BGS targets with external spectroscopic data sets. We use the publicly available code TWOPCF⁷ to compute the angular correlation function together with jackknife errors. These jackknife errors are obtained by dividing the footprint into 100 independent regions of similar area such that each region contains the same number of points in the random catalogue.

In order to characterise the clustering of the BGS targets, we compare it to theoretical predictions based on the halo model (e.g. (e.g. Peacock & Smith 2000; Seljak 2000; Cooray & Sheth 2002)). In the current paradigm of galaxy formation, galaxies form within dark matter halos and the overall galaxy clustering can be modelled by two contributions: one contribution due to galaxy pairs within dark matter halos (the 1-halo term) and another contribution due to galaxy pairs in separate halos (the 2-halo term; see, for example, Benson et al. 2000; Zheng et al. 2005). When combined, these two terms result in an approximate power law, with a feature corresponding to the 1-halo to 2-halo transition occurring around few h^{-1} Mpc, the typical virial radius of a halo, as first measured in the SDSS Main Galaxy Sample (Zehavi et al. 2004). Then, to obtain a prediction for the observed angular clustering, $w(\theta)$, based on a model for the full three-dimensional clustering, $\xi(r)$, we can use Limber’s approximation (Limber 1953) to project the real-space clustering into angular space, assuming a flat sky and small angular separations (for a discussion of the validity of Limber’s approxima-

tion, see Simon 2007):

$$w(\theta) = \frac{2}{c} \int_0^\infty dz H(z) \left(\frac{dN}{dz} \right)^2 \int_0^\infty du \xi \left(r = \sqrt{u^2 + x^2(z)\theta^2} \right), \quad (5)$$

where dN/dz is the normalised redshift distribution, $x(z)$ is the comoving distance to redshift z and the integral takes account of the reduction or dilution of clustering due to the chance alignments of uncorrelated galaxies at significantly different redshifts along the line of sight. This dilution effect is larger when the sample covers a wider range of redshift. Re-writing this following the notation in Kitanidis et al. (2019), with the centre-of-mass, $\bar{r} = (r_1 + r_2)/2$, relative coordinates, $\Delta r = r_2 - r_1$ and where $f(\bar{r})$ is the normalised radial distribution, the equation becomes:

$$w(\theta) = \int_0^\infty d\bar{r} f(\bar{r})^2 \int_{-\infty}^\infty d\Delta r \xi(R, \bar{r}). \quad (6)$$

Previous studies showed that the observed correlation function can be modelled as a single power law in r and z up to separations of about $\approx 10h^{-1}$ Mpc (e.g. Davis & Peebles 1983; Gaztanaga 1995; Maddox et al. 1996):

$$\xi(r) = \left(\frac{r_0}{r} \right)^\gamma (1+z)^{-(3+\epsilon)}, \quad (7)$$

where r_0 is the clustering length, the scale at which $\xi = 1$, and γ is the power-law slope. When the clustering properties do not evolve with proper coordinates, we have $\epsilon = 0$ (Gaztanaga 1995). Assuming this power-law form for the correlation function, equation. 6 becomes:

$$w(\theta) = \theta^{1-\gamma} r_0^\gamma \sqrt{\pi} \frac{\Gamma(\gamma/2 - 1/2)}{\Gamma(\gamma/2)} \int_0^\infty d\bar{r} f(\bar{r})^2 (1+z)^{(\gamma-3)} \bar{r}^{1-\gamma}, \quad (8)$$

This final equation can be considered as $w(\theta) = A_{\gamma, r_0} \theta^{1-\gamma}$, where the integral and Γ functions have been absorbed into a constant, A_{γ, r_0} , whose value is set by the choices for γ and r_0 . Plotting $w(\theta) \times \theta^{-(1-\gamma)}$ will result in a constant if the power law model is a good description of the measured angular clustering. As one can see, there is a degeneracy between the inherent clustering amplitude and the redshift distribution of the galaxies in the sample. In what follows, we will fit the observed angular clustering with this theoretical prediction in order to extract the clustering length r_0 and slope γ , using the dN/dz from the MXXL lightcone simulation (Smith et al. 2017) which matches the expected BGS redshift distribution. We note that the values of these functions and parameters that describe the BGS clustering properties could be used to create more realistic mock catalogues.

3.1.2 Consistency between BASS/MzLS and DECaLS

First, we test the consistency between clustering in the three imaging surveys when considering BGS Bright. Fig. 9 shows the angular correlation function of the BGS targets in BASS/MzLS (blue), in DECaLS-NGC (blue) and in DECaLS-SGC (green), together with the angular clustering from the MXXL BGS lightcone (black). Given the choice of quantity plotted on the vertical axis, the plateau we see up to angular scales of ≈ 2 deg shows that the power-law form is an excellent description on these scales with $\gamma \approx 1.8$. Beyond ≈ 2 deg there is a rapid reduction in the clustering away from the small-scale power law. We can see a very good agreement overall between the three imaging surveys and the MXXL lightcone, which is further confirmed by the results of the fitting given in Table 2. We find a consistent clustering length and slope between the three imaging

⁶ <https://www.legacysurvey.org/dr9/files/#random-catalogs-randoms>

⁷ https://github.com/lstothert/two_pcf

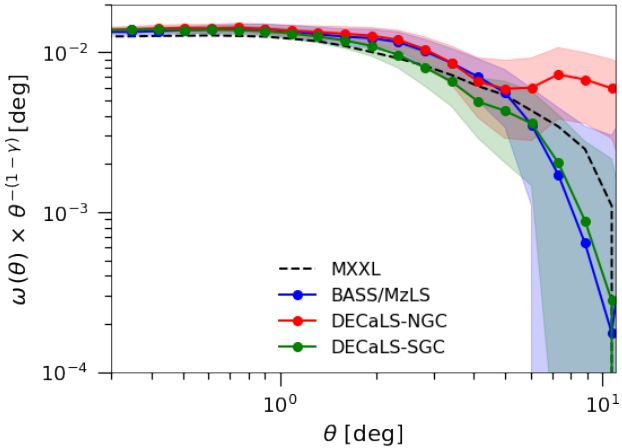


Figure 9. Angular clustering of the BGS targets in BASS/MzLS (blue), DECaLS-NGC (red), DECaLS-SGC (green), together with the results from the MXXL BGS lightcone (black). We have scaled the angular correlation function by $\theta^{-(1-\gamma)}$ to highlight departures from the power law recovered at small angular separations. The shading shows the $1-\sigma$ error estimated using a jackknife resampling of the data.

surveys and the MXXL. Comparison with previous measurements using SDSS EDR (Stoughton et al. 2002), SDSS DR7 (Wang et al. 2013), and the APM (Maddox et al. 1990) indicate that the angular clustering of the DESI BGS sample has a steeper slope (i.e. the clustering strength drops more rapidly with increasing angular separation) which can be explained by the BGS redshift distribution which extends to higher redshifts than previous surveys, with a mean redshift of $z = 0.2$.

In order to investigate the impact of any potential remaining imaging systematics, we also look at the angular correlation function on large scales. Fig. 10 shows the angular clustering up to 20 deg for the three imaging surveys and the MXXL. The solid curves correspond to the nominal configuration, the dashed ones to the case where we remove regions of high stellar density (i.e. we keep $\text{stardens} < 1000/\text{deg}^2$), and the dotted curves to the case where we remove regions of low Galactic latitude (we keep $|b| > 30$ deg). These two tests have a negligible impact on the clustering given the size of the error bars at these large scales. The overall agreement is reasonably good. At angular scales between 5 and 15 deg, DECaLS-NGC seems to have a higher amplitude but again, the errors bars are important at these very large angular scales. One may question the validity of the jackknife errors at these scales. In order to test this we computed the error bars using 10, 25 and 50 jackknife regions and compared with the errors when using 100 jackknife regions. We notice a slight under-estimation when increasing the size of the jackknife region as expected, but otherwise the effect remains small which validates our interpretation of Fig. 10: the difference in clustering amplitude in this regime is consistent with being due to a statistical fluctuation.

3.1.3 Clustering as a function of magnitude

As an additional check for systematics, we compute the angular correlation function for different apparent magnitude bins and compare the results of the BGS targets with the MXXL simulation as shown in Fig. 11. The quantity plotted on the y-axis, $w(\theta) \times \theta^{-(1-\gamma)}$, was chosen such that one can see the domain of validity of the power-law form, as for Fig. 9. Table 2 presents the results of the power-law

Table 2. Best-fitting values for the clustering length, r_0 , and power-law slope, γ , of the BGS targets in BASS/MzLS, DECaLS-NGC and DECaLS-SGC, compared to the results from the MXXL lightcone simulation, when using a power-law approximation over the fitting range $0.001 < \theta < 1$ deg.

dataset	r_0 [h^{-1} Mpc]	γ
BGS Bright		
BASS/MzLS	5.477 ± 0.117	1.792 ± 0.007
DECaLS-NGC	5.653 ± 0.118	1.781 ± 0.007
DECaLS-SGC	5.010 ± 0.079	1.818 ± 0.005
MXXL	4.817 ± 0.106	1.789 ± 0.006
$15 < r_{\text{mag}} < 16$		
BASS/MzLS	6.173 ± 0.703	1.642 ± 0.033
DECaLS-NGC	4.413 ± 0.498	1.761 ± 0.036
DECaLS-SGC	5.446 ± 0.558	1.698 ± 0.034
MXXL	5.731 ± 0.628	1.736 ± 0.039
$16 < r_{\text{mag}} < 17$		
BASS/MzLS	5.889 ± 0.359	1.744 ± 0.021
DECaLS-NGC	5.309 ± 0.448	1.761 ± 0.027
DECaLS-SGC	5.962 ± 0.368	1.715 ± 0.022
MXXL	6.189 ± 0.181	1.753 ± 0.029
$17 < r_{\text{mag}} < 18$		
BASS/MzLS	5.844 ± 0.198	1.776 ± 0.012
DECaLS-NGC	6.226 ± 0.275	1.746 ± 0.015
DECaLS-SGC	5.514 ± 0.225	1.793 ± 0.015
MXXL	5.909 ± 0.206	1.788 ± 0.012
$18 < r_{\text{mag}} < 19$		
BASS/MzLS	5.360 ± 0.146	1.750 ± 0.008
DECaLS-NGC	5.444 ± 0.237	1.742 ± 0.013
DECaLS-SGC	5.393 ± 0.122	1.745 ± 0.007
MXXL	4.590 ± 0.140	1.803 ± 0.007
$19 < r_{\text{mag}} < 20$		
BASS/MzLS	5.286 ± 0.098	1.725 ± 0.006
DECaLS-NGC	5.336 ± 0.122	1.720 ± 0.007
DECaLS-SGC	5.032 ± 0.100	1.740 ± 0.006
MXXL	4.382 ± 0.107	1.774 ± 0.006

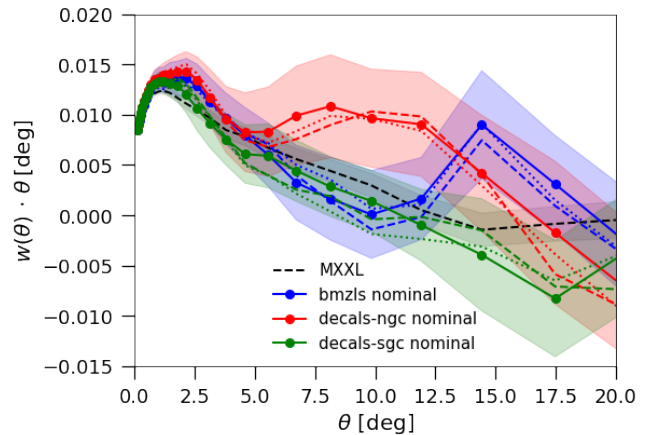


Figure 10. Angular clustering of the BGS targets when removing regions of high stellar density (dashed) or low Galactic latitude (dash-dot) compared to the original case (solid); these three estimates are consistent within the $1-\sigma$ jackknife errors shown by the shaded regions. The angular clustering at large scales is also shown for the MXXL BGS lightcone (dashed black). Note in this plot the angular correlation function is plotted multiplied by θ .

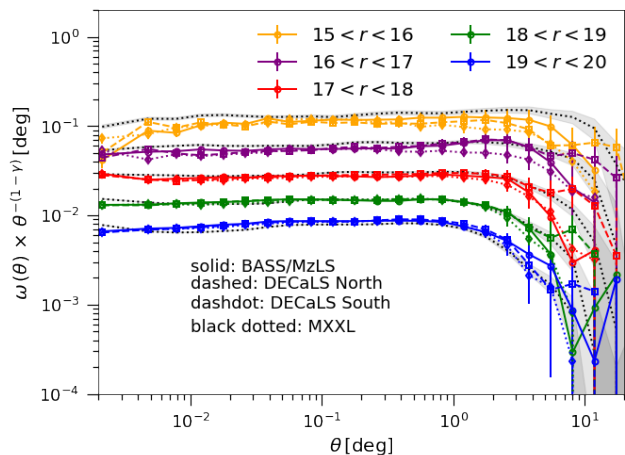


Figure 11. Angular clustering as a function of the apparent magnitude in the r-band for BASS/MzLS (solid), DECaLS-NGC (dashed), DECaLS-SGC (dashdot), together with the results from the MXXL BGS lightcone mock (dotted)

fitting on both DR9 and MXXL for the five apparent magnitude bins we consider.

In order to help interpret these results we first quantify some properties of the matching MXXL mock catalogue. In Fig. 12, we see that the distribution of absolute magnitude has very little dependence on the apparent magnitude range of the sample. Hence we would expect each of our apparent magnitude samples to be dominated by galaxies of the same absolute magnitude and hence have similar 3-dimensional clustering, $\xi(r)$. The main way in which the samples differ in their normalized dN/dz shown in the bottom panel of Fig. 12. The shallower more sharply peaked dN/dz of the brighter samples will lead to stronger angular cluster, due to the $(dN/dz)^2$ term in Limber’s equation (equation. 5), and the break away from the small scale power-law occur on larger angular scales due to a fixed comoving separation subtending a larger angle at low redshift. This is precisely how the observational results shown in Fig. 11 behave.

To summarise, we find an overall consistent clustering strength and slope between the three imaging surveys and MXXL. Moreover, compared to the reference SDSS measurements (Wang et al. 2013), the DESI BGS allows us to obtain more precise measurements due to the larger size of the sample and greater reliability on large scales.

3.1.4 Clustering as a function of colour

A galaxy’s colour reflects its composite stellar population, which in turn depends on its star formation history, the chemical enrichment history of the star-forming gas, and the attenuation of the starlight by dust; these processes are influenced by the mass of the galaxy’s host dark matter halo (for reviews, see Conroy 2013; Somerville & Davé 2015). Therefore, massive galaxies with red colours typically have older stellar populations while galaxies with intermediate masses are bluer and younger with higher star formation rates.

In order to disentangle the colour, luminosity and redshift dependence of the galaxy clustering, we compute the colour-dependent clustering in two apparent magnitude bins for both BGS DR9 and MXXL. For each apparent magnitude bin, we split the sample into the 50 per cent bluest galaxies and 50 per cent reddest galaxies using $g - r$ colour. We found that considering a fixed fraction of

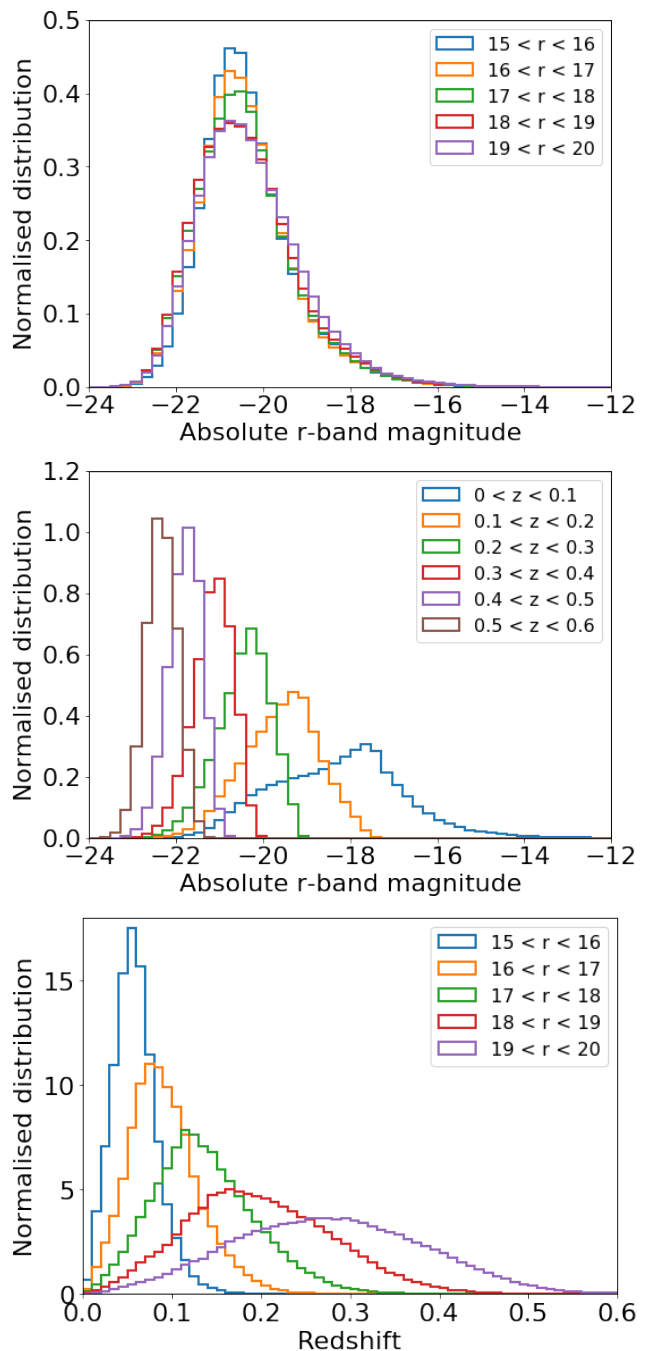


Figure 12. Top: Normalised absolute r -band magnitude distribution in MXXL for different apparent r -band magnitude slices. Middle: Normalised absolute r -band magnitude distribution in MXXL for different redshift slices. Bottom: Normalised redshift distribution in MXXL for different apparent r -band magnitude slices.

blue/red galaxies instead of fixed colour cuts results in a fairer comparison between BGS DR9 and MXXL, as the colour distribution in the MXXL simulation does not match perfectly that of the observations, particularly at fainter magnitudes. The results of this exercise are shown in Fig. 13, where the top panel corresponds to galaxies with $17 < r_{\text{mag}} < 18$ and the bottom panel to galaxies with $19 < r_{\text{mag}} < 20$. For each magnitude bin the angular clustering of

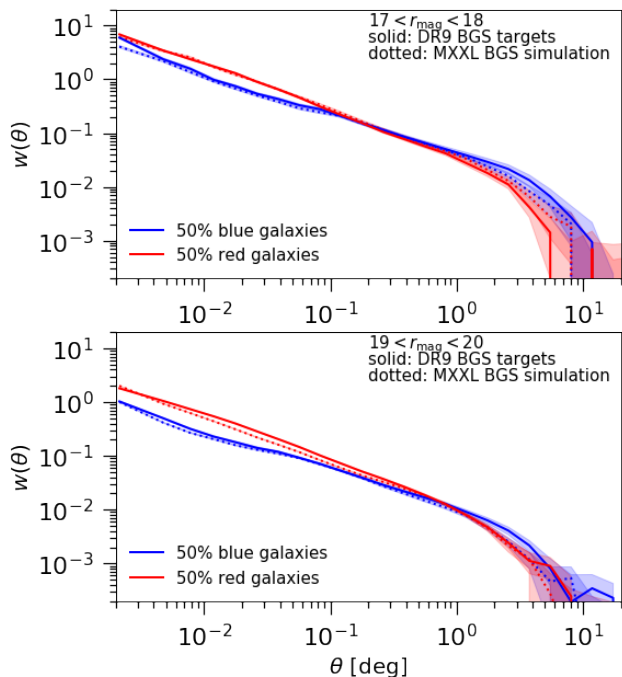


Figure 13. Angular clustering of the BGS targets with $17 < r_{\text{mag}} < 18$ (top panel) and $19 < r_{\text{mag}} < 20$ (bottom panel), for samples divided by colour into red and blue galaxies. The BGS measurements are shown by solid lines. The results using the MXXL BGS lightcone mock are also shown (dotted) for the same configurations as for the data.

blue and red galaxies is shown for DR9 BGS (solid) and the MXXL simulation (dotted). As expected, we can see that red galaxies are more strongly clustered than blue ones at intermediate to small angular separations. The overall agreement with the lightcone is good over a large range of angular scales, which thus validates the colour-assignment procedure in MXXL.

3.2 Higher-order statistics using counts-in-cells

If the density field is a purely Gaussian random field, then its probability distribution function can be described by just two numbers: the mean and the variance. A Gaussian primordial density field is well supported by observations of the CMB (Planck Collaboration et al. 2018). However, one can easily show that, in the gravitational instability scenario, this primordial distribution of density fluctuations will evolve into a distinctly asymmetric density field. Thus, the observed higher-order moments of the local density field contain information besides the two-point statistics, such as the departure from Gaussianity, which can inform us about the growth of cosmic structures, and more specifically on the bias between galaxies and the underlying matter distribution (see the review by Bernardeau et al. 2002). Moreover, in order to produce more realistic mock catalogues, it is essential to reproduce the higher-order clustering statistics of the BGS sample, especially for regions of high density where spectroscopic incompleteness due to the finite size of the fibre allocation⁸ has a significant impact on clustering (Burden et al. 2017; Hahn et al. 2017; Bianchi et al. 2018; Smith et al.

2019; Bianchi & Verde 2020). These higher-order statistics can be explored using counts-in-cells (CIC, see for example White 1979; Peebles 1980; Fry & Gaztanaga 1993).

The CIC analysis of projected galaxy counts in wide-field galaxy surveys has a long history, stretching back to visually measured counts on photographic plates (Groth & Peebles 1977). Gaztanaga (1994) measured the distribution of CIC up to ninth order from the Automated Plate Machine survey (Maddox et al. 1990), showing that the galaxies are essentially unbiased tracers of the matter distribution on large scales. Ross et al. (2006, 2007) applied CIC to the third release of SDSS in order to measure the higher-order angular correlation functions of SDSS that can be used for testing the hierarchical clustering model and higher-order bias terms. Salvador et al. (2019) developed the technique to measuring the linear and non-linear galaxy bias of the Dark Energy Survey Science Verification data. More recently, Repp & Szapudi (2020) developed a theoretical prediction of the CIC galaxy probability function as a function of σ_8 and b to measure these parameters from the SDSS Main Galaxy Sample.

With the goal of providing a complete characterisation of the clustering properties of the BGS sample, in this section we investigate the higher-order statistics of the density field up to fourth order: mean, variance, skewness and kurtosis by making use of the CIC method. We use the HEALPix⁹ package (Górski et al. 2005) which divides the sky such that each pixel covers the same surface area. This method works for the entire DESI footprint, unlike the one used in Kitanidis et al. (2019), which is based on a transformation of the angular coordinates into cartesian coordinates. This is a good approximation for regions close to the Galactic plane, such as the rectangles defined in their paper for DECaLS, but is no longer valid when considering BASS/MzLS for instance. In the HEALPix pixelation, the lowest resolution partition is comprised of 12 base pixels and the resolution increases by dividing each pixel into four new ones such that $n_{\text{side}} = 2^{\text{resolution}}$ is the number of pixels per side and $n_{\text{pix}} = 12 \times n_{\text{side}}^2$ is the total number of pixels in the map. In what follows, we consider resolutions above 4 to the maximum 10. The maximum resolution corresponds to a cell size of roughly 0.06 deg which is above the DESI patrol radius. For each resolution of the HEALPix maps, we remove pixels that are not fully within the survey boundaries by determining a threshold based on the expected number density using the random catalogue. The threshold is determined such that these outliers in the HEALPix pixels distribution are removed while decreasing the effective area by less than 10%, as confirmed in Fig. 14 which shows the difference in effective area after and before removing the outliers for BASS/MzLS (red), DECaLS-NGC (blue) and DECaLS-SGC (red) based on the random catalogue.

For each resolution of the HEALPix map, we compute the effective mean density per square degree, the standard deviation, the skewness and the kurtosis. Szapudi & Colombi (1996) showed that the CIC statistics are sensitive to sample variance (shot noise, edge effects and finite volume) and to measurements errors due to the finite number of sampling cells. Szapudi (1998) proposed a method of infinite oversampling that enables the noise that is introduced by having only one set of sampling cells to be beaten down and thus to eliminate the measurement errors. In order to reproduce this oversampling effect, we dither by a fraction of cell size each HEALPix map, compute the CIC statistics for each rotation and take the average. In practise, first we convert the RA, Dec into x, y, z coordinates

⁸ The DESI patrol radius is about $1.4'$ which corresponds to 0.017 deg.

⁹ <https://healpix.sourceforge.io>

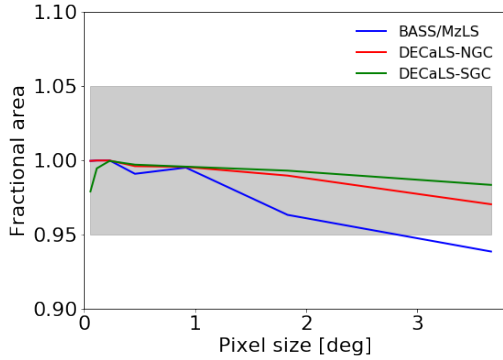


Figure 14. Ratio of the effective area after and before removing the outliers in the HEALPix distribution based on the random catalogue for the three imaging surveys: BASS/MzLS (blue), DECaLS-NGC (red), DECaLS-SGC (green). The shaded grey region shows 10% variation of this fractional area.

and then rotate the coordinates by an angle ϕ (in degrees) around an arbitrary rotation axis vector. The angle ϕ is randomly chosen in a Gaussian distribution of width the HEALPix cell size (we also tried twice and five times the HEALPix cell size). Eventually we convert back the shifted x, y, z into new RA, *Dec*. We do 5 rotations and compute the mean and standard deviation of each quantity above. We did not find any shift in the mean value of each CIC statistics associated with this shifting of pixels, which confirms that we are carrying out a robust sampling and that the tails of the counts distribution are well measured and not unduly affected by the sampling of extreme voids or overdensities. In order to estimate errors, we define a set of 100 jackknife regions, the same set for every pixel size, and we compute the effective density, standard deviation, skewness and kurtosis in each region, take the mean and the standard deviation. First, we test the procedure using the MXXL lightcone that we split into BASS/MzLS, DECaLS-NGC and DECaLS-SGC regions. Fig. 15 shows the results of the MXXL lightcone in dashed for each statistic as a function of HEALPix cell size for BASS/MzLS (blue), DECaLS-NGC (red), DECaLS-SGC (green) with the coloured regions representing the $1-\sigma$ errors from the 100 jackknife regions. As expected, the measurements for the different MXXL regions all agree to within the errors. The solid curves show the same results for the BGS DR9 targets with their jackknife errors. The values of the target density for the three imaging surveys are consistent with the ones given in Section 2.1 with 7% difference at maximum when correcting for the magnitude and colour shift between BASS/MzLS and DECaLS. The other statistics show a better agreement between the three imaging regions of the BGS data and with the MXXL lightcone, even for the third (skewness) and fourth (kurtosis) moments of the galaxy density field although no direct information about these higher-order statistics was included in the creation of the MXXL lightcone for BGS. We note that both the skewness and kurtosis are non-zero as expected from a primordial Gaussian random density field which evolved under gravitational instability and led to the hierarchy of gravitationally-bound structures that form the cosmic web with filaments, sheets, knots and voids.

4 CROSS-CORRELATIONS WITH EXTERNAL SPECTROSCOPIC DATA

In this section, we study the cross-correlations between the BGS targets and external spectroscopic data sets that we present in Section 4.1 in order to determine the real-space projected cross-

correlation function $w_p(r_p)$ in Section 4.2 and the redshift distribution dN/dz of the BGS targets in Section 4.3.

4.1 External spectroscopic data sets

In order to study the clustering properties of the BGS targets as a function of redshift, we make use of two external spectroscopic data sets that overlap both in area and redshift with BGS. At $z < 0.2$, in the NGC, we use the SDSS DR7 MGS clustering catalogue (Ross et al. 2015) that covers 6813 deg^2 and contains 63,163 SDSS DR7 spectroscopically identified galaxies. This dataset overlaps with about 915 deg^2 of BASS/MzLS and with about 1410 deg^2 of DECaLS-NGC. In both the NGC and SGC, up to $z < 0.6$, we use the LOWZ and CMASS clustering catalogues (Reid et al. 2016) from DR12 of SDSS-III BOSS (Eisenstein et al. 2011; Dawson et al. 2013). The LOWZ sample contains galaxies at $z \leq 0.4$ covering $8,337 \text{ deg}^2$ and the CMASS sample contains galaxies in $0.4 \leq z \leq 0.7$ covering $9,376 \text{ deg}^2$. In total, the overlap with BASS/MzLS corresponds to roughly 2965 deg^2 , the one with DECaLS-NGC to 4335 deg^2 and the one with DECaLS-SGC to 2585 deg^2 . Fig. 16 shows the footprint of the DR9 Legacy Imaging Surveys restricted to the DESI footprint, together with the footprint of SDSS MGS and BOSS LOWZ-CMASS.

4.2 Clustering as a function of redshift

By making use of cross-correlation with samples of known redshift, we can infer the projected real-space cross-correlation function, $w_p(r_p)$, which corresponds to the integral of the 2D spatial correlation function $\xi(r_{\parallel}, r_{\perp})$ over the line of sight direction r_{\parallel} (Peebles 1980). This projected real-space correlation function can be related to the angular correlation function $w(\theta)$. Following Padmanabhan et al. (2009), if we consider that the spectroscopic sample lies at $\chi = \chi_0$, then according to the flat-sky approximation and by applying the Limber approximation, the relation simplifies to:

$$w(\theta) = f(\chi_0)w_p(r_p), \quad (9)$$

where $f(\chi_0)$ is the normalised radial distribution of the photometric sample. We can generalise this to a narrow spectroscopic redshift slice where we consider the clustering as constant over the redshift slice and we can assume that the redshift of the photometric galaxy is the same as the one of the spectroscopic galaxy it is correlated with. It allows us to rebin the pair counts of the angular correlation function in transverse separation, $w_{\theta}(r_p)$. We can thus rewrite equation 9 as:

$$w_{\theta}(r_p) = \langle f(\chi) \rangle w_p(r_p), \quad (10)$$

where $f(\chi)$ is the normalised radial distribution of the photometric sample over the spectroscopic bin considered. In what follows, we use the MXXL lightcone simulation to estimate the contribution from the redshift distribution of the BGS targets. Recently, this observable, the projected cross-correlation function binned into transverse comoving radius, was also developed for improving the measurement of the Baryon Acoustic Oscillations feature for a sparse spectroscopic sample (Patej & Eisenstein 2018). The first detailed application to data was proposed in Zarrouk et al. (2021) where a sample of sparse quasars from eBOSS was cross-correlated with a dense photometric sample of galaxies using the DR8 DESI Legacy Imaging Surveys.

We use the Landy-Szalay estimator as defined by equation 4 where we count pairs in 16 logarithmically spaced angular bins

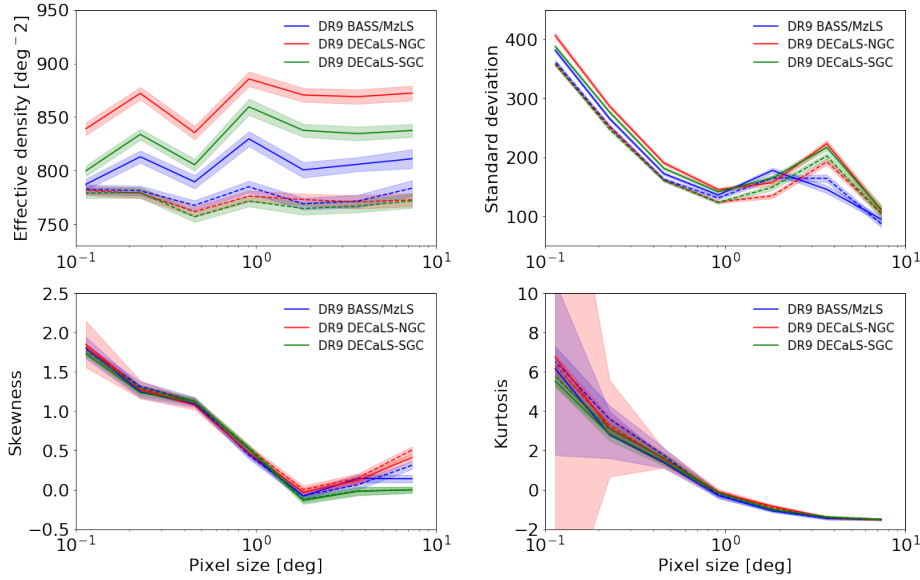


Figure 15. Effective mean density, standard deviation, skewness and kurtosis as a function of HEALPix cell size in degrees for the MXXL lightcone (dashed) and for the BGS DR9 targets (solid) where both are restricted to the same imaging region with errors bars from 100 jackknife regions.

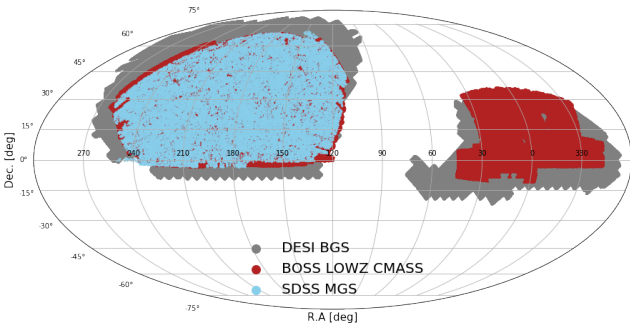


Figure 16. Footprint of the different datasets used in the analysis in § 5: in grey the BGS using DR9 DESI Legacy Imaging Surveys, in red SDSS MGS and in blue BOSS LOWZ and CMASS.

between $\theta=0.001$ deg and $\theta=1$ deg. We divide the external spectroscopic datasets into redshift slices of width $\Delta z = 0.1$, and each redshift slice is cross-correlated with the BGS catalogue. Errors bars are estimated using the bootstrap technique presented in [Kitanidis et al. \(2019\)](#), using 500 bootstrap realisations. We checked that our results are robust to the choice of the number of bootstrap realisations. We can also compare the projected real-space cross-correlation function with theory by assuming a power-law model for the correlation function, which gives:

$$w_p(r_p) = r_p^{1-\gamma} r_0^\gamma \sqrt{\pi} \frac{\Gamma(\gamma/2 - 1/2)}{\Gamma(\gamma/2)}. \quad (11)$$

Fig. 17 shows the real-space projected cross-correlation function of the BGS targets in BASS/MzLS (top), DECaLS-NGC (middle) and DECaLS-SGC (bottom). The colours represent the cross-correlation functions with different redshift slices of the external spectroscopic datasets (SDSS MGS DR7 for BASS/MzLS and DECaLS-NGC, BOSS LOWZ-CMASS for all three DECaLS regions). The dashed black line shows the theoretical prediction when assuming a power-law for the correlation function as given by Eqn. 11 with the clustering length r_0 and slope γ corresponding to the best-fitting parameters from Table 2 for each imaging region. We thus obtain a consistency between the behaviour of the

angular correlation function, $w(\theta)$, and the projected real-space cross-correlation function, $w_p(r_p)$. Fig. 17 also shows a slight decrease of the clustering amplitude with increasing redshift which is in competition between the redshift evolution of the absolute magnitude - as redshift increases, galaxies are intrinsically fainter which is confirmed in MXXL and shown in the middle panel of Fig. 12 - and the redshift evolution of the clustering amplitude - as redshift increases, the clustering amplitude decreases. Using the formula for the luminosity-dependence of the clustering of [Norberg et al. \(2001\)](#) for the extreme slices where the peak luminosity shifts from -18 in the lowest redshift bin and to -22 in the highest redshift bin, we found a 0.73 reduction in clustering amplitude moving from high to low redshift. At the same time, the growth factor at these two redshifts changes the clustering amplitude by 1.51, which gives an overall 10% effect on the clustering amplitude, i.e. $1.51 \times 0.73 = 1.10$.

4.3 Clustering-redshift dN/dz

The cross-correlation signal between a photometric sample and spectroscopic data sets can also be used to infer the redshift distribution of the photometric sample. Using cross-correlations to get information about the properties of the photometric galaxies is not new. For instance [Seldner & Peebles \(1979\)](#) used cross-correlations of quasars and galaxy counts to test how galaxies are distributed around quasars and to see if this depends on the redshift and apparent magnitude of the quasar. [Schneider et al. \(2006\)](#) first discussed the idea of using a spectroscopic sample to determine the redshift distribution of photometric galaxies, then [Newman \(2008\)](#) expanded on this and described the clustering-redshift technique. We follow the approach proposed by [Ménard et al. \(2013\)](#) and [Rahman et al. \(2015\)](#) which uses smaller scales and accounts for the redshift evolution of the galaxy bias. We measure the angular cross-correlation function between the BGS targets and narrow redshift slices of the spectroscopic datasets ($\Delta z = 0.05$). For each redshift slice Δz_i , we compute the angular cross-correlation function $w_{ur}(\theta, \Delta z_i)$, then we integrate over an annulus centered on the spectroscopic object from θ_{\min} to θ_{\max} . Indeed, [Ménard et al.](#)

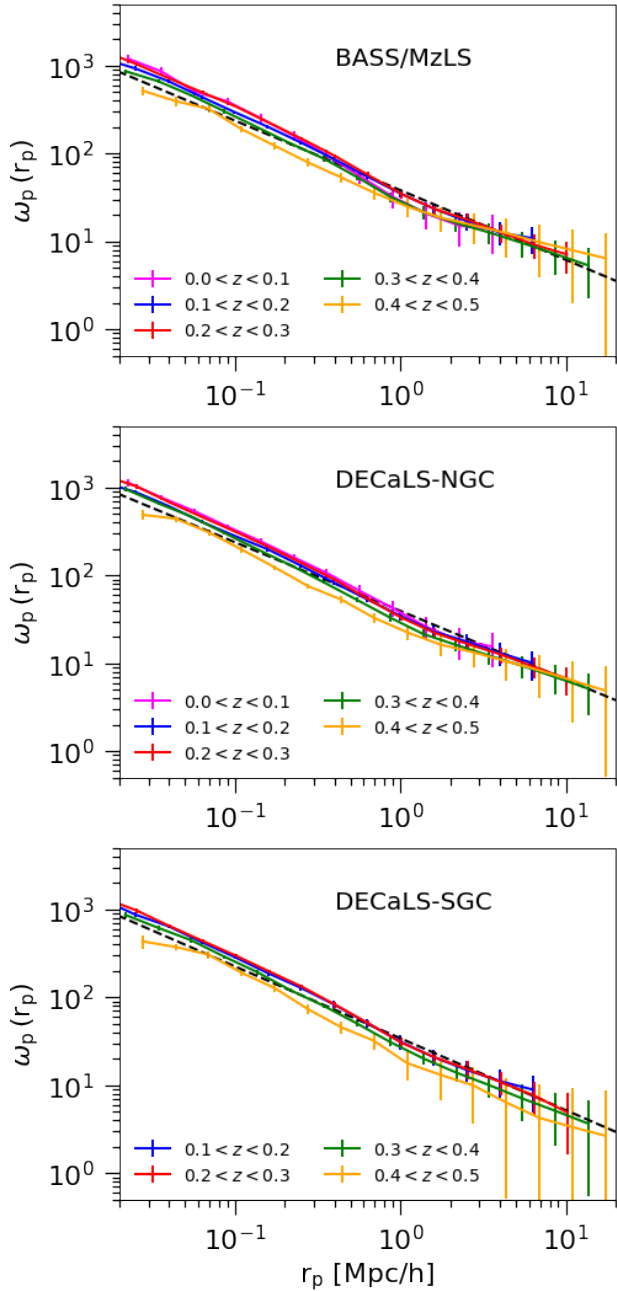


Figure 17. Real space projected cross-correlation function of the BGS targets with external spectroscopic datasets, SDSS MGS and BOSS LOWZ-CMASS for BASS/MzLS (top), DECaLS-NGC (middle) and DECaLS-SGC (bottom).

(2013) showed that the sensitivity of the cross-correlation signal is improved when including information from many clustering scales. In order to maximise the signal-to-noise ratio, we can weight each measurement by θ^{-1} . Applying this weighting gives the following integrated cross-correlation function:

$$\bar{w}_{\text{ur}}(z) = \int_{\theta_{\min}}^{\theta_{\max}} d\theta \frac{w_{\text{ur}}(\theta, z)}{\theta}, \quad (12)$$

where we set $\theta_{\min}, \theta_{\max}$ to match a fixed range of projected radii $r_{p,\min}, r_{p,\max}$ so that we can probe the same range of physical

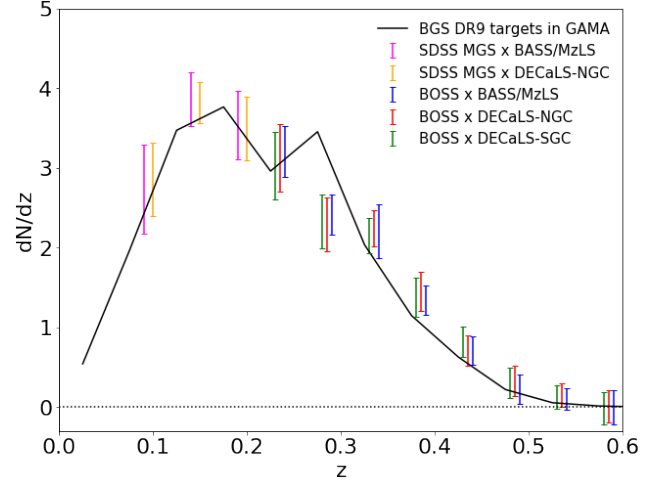


Figure 18. Normalised Redshift distribution for the BGS DR9 targets that match with GAMA galaxies (black), for the BGS DR9 targets using clustering-redshifts by cross-correlating with SDSS MGS galaxies (magenta and yellow) and BOSS LOWZ-CMASS galaxies (blue, red, green).

scales as a function of redshift. We use $r_{p,\min} = 0.05h^{-1}\text{Mpc}$ and $r_{p,\max} = 5h^{-1}\text{Mpc}$.

Finally, the redshift distribution can be inferred from the integrated cross-correlation function using:

$$\frac{dN}{dz} \propto \frac{\bar{w}_{\text{ur}}(z)}{b_u(z)b_r(z)}, \quad (13)$$

where b_u is the bias of the BGS sample and b_r is the bias of the spectroscopic sample. For SDSS MGS DR7 and BOSS LOWZ-CMASS, we use the large-scale bias measurements of Ross et al. (2015); Howlett et al. (2015) and of Rodríguez-Torres et al. (2016) respectively. For both spectroscopic samples the redshift evolution of the bias is negligible over the redshift slice $\Delta z = 0.05$. For the BGS targets, we use the DESI Final Design Report values (DESI Collaboration et al. 2016a) and we find consistency when comparing with the MXXL BGS lightcone. However, we highlight that the aim is not to provide the most accurate redshift distribution using this technique but rather to show an illustration of it and provide an additional check of the clustering evolution with redshift. Moreover, we note that the Survey Validation is currently providing accurate redshifts for building truth tables and testing the performance of the spectroscopic pipeline.

Fig. 18 shows the redshift distribution dN/dz of the BGS targets in BASS/MzLS, DECaLS-NGC and DECaLS-SGC using this clustering-redshift technique with SDSS MGS DR7 galaxies in $0.07 < z < 0.2$ and BOSS LOWZ-CMASS galaxies $0.2 < z < 0.6$. We confirm that the inferred redshift distributions are all in agreement between the three imaging regions, and also with the redshift distribution of the BGS targets that match GAMA galaxies using their spectroscopic redshifts (in black).

5 CONCLUSIONS

We have presented the target selection pipeline that selects the BGS bright targets ($r_{\text{mag}} \leq 19.5$) from the latest release of the Legacy Imaging Surveys (DR9) that uses BASS, MzLS and DECaLS over the DESI footprint of $14,000 \text{ deg}^2$. This includes several changes with respect to what was first presented using DECaLS DR8 in Ruiz-Macias et al. (2021) that we summarize here:

- Thanks to major improvements in the iterative fitting around bright stars, the radius of the bright star mask is half the size in DR9 than it was in DR8. We have checked that this change does not introduce any spurious effects. We found that our star-galaxy separation based on GAIA yields less than 2% stellar contamination which is also confirmed by the cross-correlation signal of BGS targets and bright stars at large scales.

- Thanks to major improvements in the photometry, we no longer need to apply a spatial masking around large galaxies: we were missing true BGS targets in the vicinity of the large galaxies that we are now able to recover. We checked that this change improves the completeness with respect to GAMA which is highly complete in $14 < r < 19$. We also developed a visual inspection webtool which confirms that not applying the large galaxy mask does not introduce a significant fraction of spurious objects.

- Using this visual inspection webtool, we also found that we could make a less conservative choice on some of the quality cuts that involve FRACIN, FRACMASKED and FRACFLUX which increases the completeness slightly while ensuring a negligible fraction of spurious objects in the vicinity of the large galaxies.

- Finally, the DR9 selection cuts yield a completeness with respect to GAMA DR4, which is complete in $14 < r < 19$, that is above 99%. DR9 also results in a BGS bright sample ($r \leq 19.5$) that meets the requirement for target density which is above 800 deg^{-2} for the three imaging surveys.

After presenting the target selection cuts and studying the main systematics, we characterised the clustering properties of the BGS bright sample by looking at several statistics:

- The angular clustering shows very good consistency between the three imaging surveys and with the MXXL BGS lightcone (Smith et al. 2017). It is also consistent with a power-law model on angular scales below 1 deg and it gives comparable clustering strength r_0 and slope γ , both between the three imaging surveys, with the mock and with previous measurements in the literature.

- The angular clustering as a function of magnitude confirms that brighter samples have higher amplitude and bigger clustering strength that corresponds to brighter galaxies occupying more massive halos.

- The colour-dependent clustering confirms that brighter and redder galaxies are more strongly clustered. We also found a very good agreement with MXXL when splitting both samples by magnitude and fixed fraction of blue/red galaxies.

- We also investigated higher-order clustering properties by making use of the counts-in-cells technique using the HEALPix package. We compared the mean density, standard deviation, skewness and kurtosis of the galaxy density field in BASS/MzLS, DECaLS-NGC, DECaLS-SGC for the data and MXXL.

- Finally, we looked at the redshift evolution of the clustering by cross-correlating the BGS targets with external spectroscopic datasets that overlap in area and redshift. We used SDSS MGS DR7 and BOSS LOWZ-CMASS to compute the projected real-space cross-correlation function in redshift slices of width $\Delta z = 0.1$. We found very good agreement and a consistent clustering with the prediction from a power-law model using the best-fitting values for r_0 and γ that we measured by fitting the angular clustering. We also inferred the redshift distribution of the BGS targets using the clustering-redshift technique. We were able to recover a redshift distribution that is consistent between the three imaging surveys and with the one we estimated by matching the BGS targets with GAMA galaxies and by using their spectroscopic redshifts.

As a summary, this work validates the selection for the BGS bright sample which will be very close to the final one. We have characterised and studied several clustering statistics that provide the first large-scale angular clustering analysis of the DESI BGS. Modeling the sample is an important first step for doing cosmology with DESI, and our clustering results will also aid in the creation and validation of accurate mock catalogues just as the ones we are currently developing with the AbacusSummit¹⁰ simulations (Maksimova et al. *in prep.*) which uses the Abacus code (Garrison et al. 2018; Metchnik 2009). However, additional work is required using the spectroscopic data of the ongoing Survey Validation period in order to investigate 1) the spectroscopic completeness, 2) the fiber assignment efficiency and impact on the clustering, 3) the 3D clustering. Moreover, the final target selection will also include a fainter sample that will be fully characterised in a future work.

ACKNOWLEDGEMENTS

PZ, OR-M, SC, PN and CB acknowledge support from the Science Technology Facilities Council through ST/P000541/1 and ST/T000244/1. OR-M is supported by the Mexican National Council of Science and Technology (CONACyT) through grant No. 297228/440775 and funding from the European Union's Horizon 2020 Research and Innovation Programme under the Marie Skłodowska-Curie grant agreement No 734374. JM gratefully acknowledges support from the U.S. Department of Energy, Office of Science, Office of High Energy Physics under Award Number DESC0020086 and from the National Science Foundation under grant AST-1616414. Authors want to thank the GAMA collaboration for early access to GAMA DR4 data for this work. Some of the results in this paper have been derived using the healpy and HEALPix package. We acknowledge the usage of the HyperLeda database (<http://leda.univ-lyon1.fr>). This work also made extensive use of the NASA Astrophysics Data System and of the astro-ph preprint archive at arXiv.org.

This work used the DiRAC@Durham facility managed by the Institute for Computational Cosmology on behalf of the STFC DiRAC HPC Facility (www.dirac.ac.uk). The equipment was funded by BEIS capital funding via STFC capital grants ST/K00042X/1, ST/P002293/1 and ST/R002371/1, Durham University and STFC operations grant ST/R000832/1. DiRAC is part of the National e-Infrastructure.

This research used resources of the National Energy Research Scientific Computing Center (NERSC). NERSC is a U.S. Department of Energy Office of Science User Facility operated under Contract No. DE-AC02-05CH11231.

This research is supported by the Director, Office of Science, Office of High Energy Physics of the U.S. Department of Energy under Contract No. DE-AC02-05CH1123, and by the National Energy Research Scientific Computing Center, a DOE Office of Science User Facility under the same contract; additional support for DESI is provided by the U.S. National Science Foundation, Division of Astronomical Sciences under Contract No. AST-0950945 to the NSF's National Optical-Infrared Astronomy Research Laboratory; the Science and Technologies Facilities Council of the United Kingdom; the Gordon and Betty Moore Foundation; the Heising-Simons Foundation; the French Alternative Energies and

¹⁰ <https://abacussummit.readthedocs.io/en/latest/>

Atomic Energy Commission (CEA); the National Council of Science and Technology of Mexico; the Ministry of Economy of Spain, and by the DESI Member Institutions. The authors are honored to be permitted to conduct astronomical research on Iolkam Du'ag (Kitt Peak), a mountain with particular significance to the Tohono O'odham Nation.

DATA AVAILABILITY

The DESI Legacy Imaging Surveys used for this work is public at <https://www.legacysurvey.org/dr9/description/>.

REFERENCES

- Alam S., et al., 2020, arXiv e-prints, p. [arXiv:2011.05771](https://arxiv.org/abs/2011.05771)
- Albrecht A., et al., 2006, arXiv e-prints, pp [astro-ph/0609591](https://arxiv.org/abs/astro-ph/0609591)
- Baldry I. K., et al., 2017, *Monthly Notices of the Royal Astronomical Society*, 474, 3875
- Benson A. J., Cole S., Frenk C. S., Baugh C. M., Lacey C. G., 2000, *MNRAS*, 311, 793
- Bernardeau F., Colombi S., Gaztañaga E., Scoccimarro R., 2002, *Phys. Rep.*, 367, 1
- Bianchi D., Verde L., 2020, *MNRAS*, 495, 1511
- Bianchi D., et al., 2018, *MNRAS*, 481, 2338
- Blake C., et al., 2013, *MNRAS*, 436, 3089
- Burden A., Padmanabhan N., Cahn R. N., White M. J., Samushia L., 2017, *J. Cosmology Astropart. Phys.*, 2017, 001
- Cole S., et al., 2005, *MNRAS*, 362, 505
- Conroy C., 2013, *ARA&A*, 51, 393
- Cooray A., Sheth R., 2002, *Phys. Rep.*, 372, 1
- DESI Collaboration et al., 2016a, preprint, ([arXiv:1611.00036](https://arxiv.org/abs/1611.00036))
- DESI Collaboration et al., 2016b, arXiv e-prints, p. [arXiv:1611.00036](https://arxiv.org/abs/1611.00036)
- Davis M., Peebles P. J. E., 1983, *ApJ*, 267, 465
- Dawson K. S., et al., 2013, *AJ*, 145, 10
- Dey A., et al., 2019, *AJ*, 157, 168
- Eisenstein D. J., et al., 2005, *ApJ*, 633, 560
- Eisenstein D. J., et al., 2011, *AJ*, 142, 72
- Fry J. N., Gaztanaga E., 1993, *ApJ*, 413, 447
- Garrison L. H., Eisenstein D. J., Ferrer D., Tinker J. L., Pinto P. A., Weinberg D. H., 2018, *ApJS*, 236, 43
- Gaztanaga E., 1994, *MNRAS*, 268, 913
- Gaztanaga E., 1995, *ApJ*, 454, 561
- Górski K. M., Hivon E., Banday A. J., Wand elt B. D., Hansen F. K., Reinecke M., Bartelmann M., 2005, *ApJ*, 622, 759
- Groth E. J., Peebles P. J. E., 1977, *ApJ*, 217, 385
- Guzzo L., et al., 2008, *Nature*, 451, 541
- Hahn C., Scoccimarro R., Blanton M. R., Tinker J. L., Rodríguez-Torres S. A., 2017, *MNRAS*, 467, 1940
- Howlett C., Ross A. J., Samushia L., Percival W. J., Manera M., 2015, *MNRAS*, 449, 848
- Jackson J. C., 1972, *MNRAS*, 156, 1P
- Kaiser N., 1987, *MNRAS*, 227, 1
- Kitanidis E., et al., 2019, arXiv e-prints, p. [arXiv:1911.05714](https://arxiv.org/abs/1911.05714)
- Landy S. D., Szalay A. S., 1993, *ApJ*, 412, 64
- Limber D. N., 1953, *ApJ*, 117, 134
- Linder E. V., Cahn R. N., 2007, *Astroparticle Physics*, 28, 481
- Maddox S. J., Efstathiou G., Sutherland W. J., Loveday J., 1990, *Monthly Notices of the Royal Astronomical Society*, 242, 43P
- Maddox S. J., Efstathiou G., Sutherland W. J., 1996, *MNRAS*, 283, 1227
- McDonald P., Seljak U., 2009, *J. Cosmology Astropart. Phys.*, 2009, 007
- Ménard B., Scranton R., Schmidt S., Morrison C., Jeong D., Budavari T., Rahman M., 2013, arXiv e-prints, p. [arXiv:1303.4722](https://arxiv.org/abs/1303.4722)
- Metchnik M. V. L., 2009, PhD thesis, The University of Arizona
- Moustakas J., et al., 2021, in American Astronomical Society Meeting Abstracts. p. 527.04
- Newman J. A., 2008, *ApJ*, 684, 88
- Norberg P., et al., 2001, *MNRAS*, 328, 64
- Padmanabhan N., White M., Norberg P., Porciani C., 2009, *MNRAS*, 397, 1862
- Patej A., Eisenstein D. J., 2018, *MNRAS*, 477, 5090
- Peacock J. A., Smith R. E., 2000, *MNRAS*, 318, 1144
- Peebles P. J. E., 1980, The large-scale structure of the universe
- Planck Collaboration et al., 2018, arXiv e-prints, p. [arXiv:1807.06209](https://arxiv.org/abs/1807.06209)
- Rahman M., Ménard B., Scranton R., Schmidt S. J., Morrison C. B., 2015, *MNRAS*, 447, 3500
- Reid B., et al., 2016, *MNRAS*, 455, 1553
- Repp A., Szapudi I., 2020, *MNRAS*, 498, L125
- Rodríguez-Torres S. A., et al., 2016, *MNRAS*, 460, 1173
- Ross A. J., Brunner R. J., Myers A. D., 2006, *ApJ*, 649, 48
- Ross A. J., Brunner R. J., Myers A. D., 2007, *ApJ*, 665, 67
- Ross A. J., et al., 2014, *MNRAS*, 437, 1109
- Ross A. J., Samushia L., Howlett C., Percival W. J., Burden A., Manera M., 2015, *MNRAS*, 449, 835
- Ruiz-Macias O., et al., 2020, *Research Notes of the American Astronomical Society*, 4, 187
- Ruiz-Macias O., et al., 2021, *MNRAS*, 502, 4328
- Salvador A. I., et al., 2019, *MNRAS*, 482, 1435
- Schneider M., Knox L., Zhan H., Connolly A., 2006, *ApJ*, 651, 14
- Seldner M., Peebles P. J. E., 1979, *ApJ*, 227, 30
- Seljak U., 2000, *MNRAS*, 318, 203
- Simon P., 2007, *A&A*, 473, 711
- Smith A., Cole S., Baugh C., Zheng Z., Angulo R., Norberg P., Zehavi I., 2017, *Mon. Not. Roy. Astron. Soc.*, 470, 4646
- Smith A., et al., 2019, *MNRAS*, 484, 1285
- Somerville R. S., Davé R., 2015, *ARA&A*, 53, 51
- Stoughton C., et al., 2002, *AJ*, 123, 485
- Szapudi I., 1998, *ApJ*, 497, 16
- Szapudi I., Colombi S., 1996, *ApJ*, 470, 131
- Wang Y., Brunner R. J., Dolence J. C., 2013, *Mon. Not. Roy. Astron. Soc.*, 432, 1961
- White S. D. M., 1979, *MNRAS*, 189, 831
- Zarrouk P., et al., 2021, *MNRAS*,
- Zehavi I., et al., 2004, *ApJ*, 608, 16
- Zheng Z., et al., 2005, *ApJ*, 633, 791

This paper has been typeset from a $\text{\TeX}/\text{\LaTeX}$ file prepared by the author.