

# UC Davis

## UC Davis Previously Published Works

### Title

Prevalent de novo somatic mutations in superantigen genes of mouse mammary tumor viruses in the genome of C57BL/6J mice and its potential implication in the immune system

### Permalink

<https://escholarship.org/uc/item/5qn4g2ks>

### Journal

BMC Immunology, 12(1)

### ISSN

1471-2172

### Authors

Lee, Young-Kwan  
Chiu, Sophia  
Chew, Alex  
[et al.](#)

### Publication Date

2011-01-18

### DOI

<http://dx.doi.org/10.1186/1471-2172-12-5>

Peer reviewed

RESEARCH ARTICLE

Open Access

# Prevalent *de novo* somatic mutations in superantigen genes of mouse mammary tumor viruses in the genome of C57BL/6J mice and its potential implication in the immune system

Young-Kwan Lee<sup>†</sup>, Sophia Chiu<sup>†</sup>, Alex Chew, David G Greenhalgh, Kiho Cho<sup>\*</sup>

## Abstract

**Background:** Superantigens (SAGs) of mouse mammary tumor viruses (MMTVs) play a crucial role in T cell selection in the thymus in a T cell receptor (TCR) V $\beta$ -specific manner and SAGs presented by B cells activate T cells in the periphery. The peripheral T cell repertoire is dynamically shaped by the steady induction of T cell tolerance against self antigens throughout the lifespan. We hypothesize that *de novo* somatic mutation of endogenous MMTV SAGs contributes to the modulation of the peripheral T cell repertoire.

**Results:** SAG coding sequences were cloned from the genomic DNAs and/or cDNAs of various tissues of female C57BL/6J mice. A total of 68 unique SAG sequences (54 translated sequences) were identified from the genomic DNAs of liver, lungs, and bone marrow, which are presumed to harbor only three endogenous MMTV loci (*Mtv-8*, *Mtv-9*, and *Mtv-17*). Similarly, 69 unique SAG sequences (58 translated sequences) were cloned from the cDNAs of 18 different tissues. Examination of putative TCR V $\beta$  specificity suggested that some of the SAG isoforms identified in this study have V $\beta$  specificities different from the reference SAGs of *Mtv-8*, *Mtv-9*, or *Mtv-17*.

**Conclusion:** The pool of diverse SAG isoforms, generated by *de novo* somatic mutation, may play a role in the shaping of the peripheral T cell repertoire including the autoimmune T cell population.

## Background

Endogenous retroviruses (ERVs) are known to make up approximately 10 % of the mouse genome [1]. The available data suggest that the majority of the ERV population in the genome of C57BL/6J harbor sequences similar to murine leukemia viruses (MLVs). Limited copies of endogenous mouse mammary tumor viruses (MMTVs) are identified in the genome of almost all laboratory mouse strains, including C57BL/6J with three genomic loci of *Mtv-8*, *Mtv-9*, and *Mtv-17* [2-4]. Although only three loci of endogenous MMTVs (*Mtv-8*, *Mtv-9*, and *Mtv-17*) are confirmed in the National Center for Biotechnology Information (NCBI) database, identification of the *Mtv-30* superantigen (SAG) sequence from C57BL/6J mice has been reported [5]. Certain endogenous

MMTVs, such as *Mtv-2*, are known to be capable of producing infectious virus particles, predominantly in the mammary gland, which are transmitted to the pups through the milk [6-9].

Both endogenous and exogenous MMTVs encode SAGs from an open reading frame residing on the 3' long terminal repeat (LTR) [10,11]. MMTV SAGs, which are type II membrane proteins presented in a major histocompatibility complex class II restricted manner, are capable of activating a large fraction of T cells via interaction with specific V $\beta$  region(s) of T cell receptors (TCRs) [11-13]. Individual MMTV SAG isoforms display differential TCR V $\beta$  specificities. During thymic T cell development, endogenous MMTV SAGs are recognized as self-antigens resulting in the clonal deletion of specific TCR V $\beta$  T cell subsets [10,14-19]. In addition, presentation of MMTV SAGs in the peripheral immune system leads to the activation of TCR V $\beta$ -specific T cell subsets followed by anergy and cell death [20-22]. Presumably, SAGs from

\* Correspondence: [kcho@ucdavis.edu](mailto:kcho@ucdavis.edu)

† Contributed equally

Shriners Hospitals for Children Northern California and Department of Surgery, University of California, Davis, Sacramento, CA 95817, USA

exogenous MMTVs participate in the peripheral modulation of the T cell repertoire in a TCR V $\beta$ -specific manner. However, it may be reasonable to speculate that altered forms of SAGs originating from endogenous MMTVs will acquire different binding affinities for the same V $\beta$  chain and/or new TCR V $\beta$  specificity. As a result, they may contribute to the dynamic shaping of the peripheral T cell repertoire by tolerance induction throughout the lifespan of the animal. In addition, various types of stress signals (e.g., hormone) are likely to increase the rate of MMTV SAG somatic mutation in mice leading to an altered post-stress peripheral T cell profile, which may then contribute to phenotypic variations in inbred laboratory animals.

In this study, we tested the hypothesis that a set of *de novo* somatic mutations in the endogenous MMTV SAG genes contribute to the dynamic shaping of the peripheral T cell repertoire by examining the presence of divergent SAG isoform profiles at the genome and expression levels.

## Results and Discussion

### *de novo* somatic mutations in endogenous MMTV SAG coding sequences

To examine the spectrum of *de novo* somatic mutation events in the endogenous MMTV SAG coding sequences in C57BL/6J mice, SAG sequences were PCR amplified and cloned from the genomic DNAs isolated from the liver, lungs, and bone marrow of normal mice. Liver and lungs were selected to represent differentiated tissues while bone marrow consists of both immature and mature (e.g., antibody-producing plasma cells) immune cells [23,24].

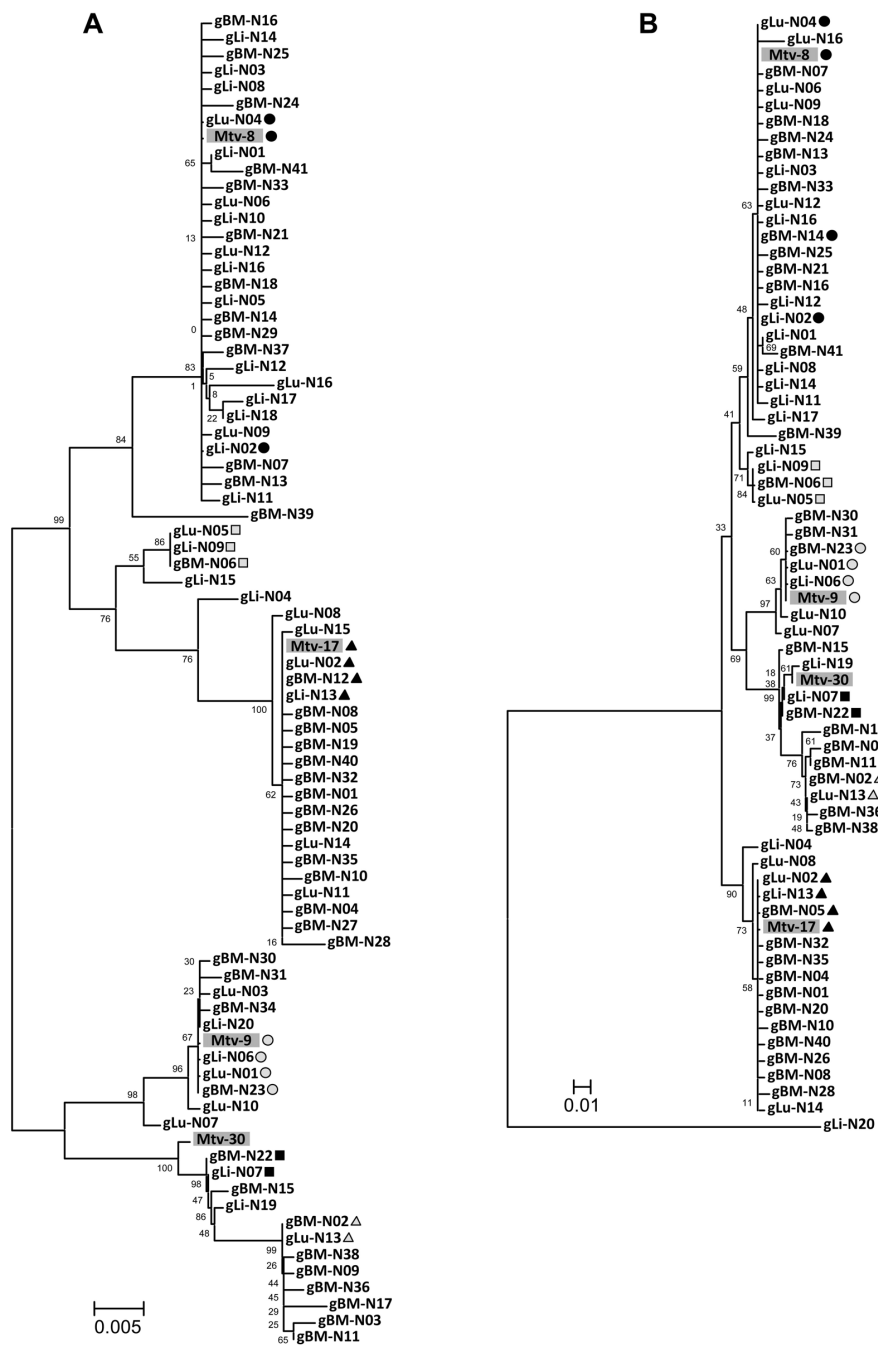
Alignment analyses of the SAG clones identified a number of unique SAG coding sequences within each tissue sample (nucleotide sequences/*in silico* translated amino acid sequences; 20/17 from liver, 16/13 from lungs, and 41/34 from bone marrow) (Figure 1). Some SAG coding sequences (nucleotide) were shared by more than one tissue and a total of 68 unique sequences were identified. A range of point mutations were observed in random loci throughout the SAG coding region. In some cases, mutations in SAG isoforms introduced a premature stop codon. Phylogenetic evaluation of the unique SAG coding sequences from all three tissues with the reference SAG sequences from *Mtv-8*, *Mtv-9*, *Mtv-17*, and *Mtv-30* revealed a tree with a number of branching units. As expected, three branching units with the SAG reference sequences from *Mtv-8*, *Mtv-9*, and *Mtv-17*, which are the three endogenous MMTVs of C57BL/6J mice, had more SAG isoforms than the other branching units. Interestingly, the SAG isoforms in one branching unit were phylogenetically closer to the *Mtv-30* SAG reference rather than to the SAGs from *Mtv-8*, *Mtv-9*,

and *Mtv-17*. Furthermore, a substantial number of SAG clones formed unique branching units separate from any of the reference SAGs. A different, but somewhat similar branching pattern was observed within the phylogenetic tree of the *in silico* translated sequences (amino acid) of the SAG isoforms (Figure 1B).

The results presented in Figure 1 demonstrate that there are a high number of MMTV SAG isoforms in the genome of C57BL/6J mice, which had been previously reported to harbor only three endogenous MMTV loci (*Mtv-8*, *Mtv-9*, and *Mtv-17*) [2,4]. The presence of numerous MMTV SAG isoforms might represent a heterogeneous mixture (related but divergent) of mutated SAGs, derived from both endogenous and/or exogenous MMTV genomes in conjunction with a relatively high number of mutation events during the viral replication process [25]. Although *Mtv-8*, *Mtv-9*, and *Mtv-17* are presumed to be inactive in replication, it is possible that biologically active viruses can be derived from recombination with replicating exogenous MMTVs in conjunction with the generation of numerous mutations in the SAG coding sequences [26]. For instance, a replication-competent recombinant MMTV provirus (5' LTR, *gag* and *pol* genes from a replicating *Mtv-2* plus the *env* gene and 3' LTR from *Mtv-17*) has been reported in GR mice [27]. It has been described that exogenous MMTVs are able to infect and develop mammary tumors in C57BL/6J mice [28]. Mutations from the reverse transcription process of the retroviral RNA genome is reported to incur at an estimated rate of 0.05-1 mutation/genome/cycle. These *de novo* mutations from replicating MMTVs may occur constantly throughout the lifespan of the host. These findings provide some evidence suggesting that MMTVs replicate and mutate in C57BL/6J mice. Although the origins (endogenous and/or exogenous) of the proviral copies identified in this study are unknown, we noticed that three main branching units were formed along with the SAG references from *Mtv-8*, *Mtv-9*, and *Mtv-17*. Furthermore, the successful isolation and cloning of a number of SAG isoforms from genomic DNA suggests the integration of proviral copies of these MMTV isoforms into the genome of certain host cells.

### Expression of divergent MMTV SAG isoforms in various tissues

The identification of a number of MMTV SAG isoforms at the genomic level led us to investigate whether such a variability of SAG isoforms is present at the expression/transcription level and whether their mutation rates and profiles are associated with differences in tissue type. The SAG sequences were PCR cloned from cDNAs prepared from 18 different tissues from normal C57BL/6J mice (bone marrow, liver, lungs, kidney, salivary gland, adrenal



**Figure 1** MMTV SAg isoforms isolated from the genomic DNA of various tissues of normal C57BL/6J mice. **A.** Phylogenetic tree (nucleotide sequence) of MMTV SAg isoforms. The three sets of unique MMTV SAg isoforms, which were isolated from the liver, lungs, and bone marrow, were phylogenetically analyzed. A number of unique branching units of SAg isoforms were formed in the phylogenetic tree. Unique SAg isoforms that were found in more than one tissue type are indicated using various shapes and shades. Four reference SAg sequences from *Mtv-8*, *Mtv-9*, *Mtv-17*, and *Mtv-30* were included for this analysis. **B.** Phylogenetic tree (putative amino acid sequence) of SAg isoforms. The three sets (liver, lungs, and bone marrow) of unique SAg isoforms were analyzed and a phylogenetic tree with a number of unique branching units of SAg isoforms was formed. Unique SAg isoforms that were found in more than one tissue type are indicated using various shapes and shades. Four reference SAg sequences from *Mtv-8*, *Mtv-9*, *Mtv-17*, and *Mtv-30* were included for this analysis. The translated sequence of gLi-N18 was not included in the analysis due to its short length resulting from a premature stop codon. black circle (identical to *Mtv-8*); black triangle (identical to *Mtv-17*); gray circle (identical to *Mtv-9*); gray triangle, gray box, and black box (identical sequences among different tissue types). gLi (liver genomic DNA), gLu (lung genomic DNA), gBM (bone marrow genomic DNA), N (normal tissue).

gland, ovary, uterus, spleen, thymus, mesenteric lymph node, axillary lymph node, inguinal lymph node, small intestine, colon, brain, skin, and stomach) and subjected to alignment analyses to identify unique SAg coding sequences within each tissue. Subsequently, phylogenetic analyses of the SAg sequences from all 18 tissues (95 sequences in total) were performed to examine the distribution and similarities of the SAg cDNA isoforms (Figure 2A). Six SAg cDNA sequences were shared by more than one tissue type and a total of 69 unique SAg isoforms were identified from this study. The total number of unique SAg cDNA coding sequences (69) was similar to the number of unique genomic SAg coding sequences (68). However, a direct comparison of the number of unique SAg isoforms between these two groups (genomic vs. cDNA) may not be feasible since the cloning process was not normalized. Phylogenetic evaluation of the SAg cDNA isoforms with the same references used for the analysis of genomic SAg sequences revealed a unique tree pattern with a number of branching units that was substantially different from the genomic SAg tree (Figure 1A). A smaller number of SAg cDNA isoforms were present in the branching unit with the *Mtv-8* SAg reference compared to the genomic SAg tree. In contrast, the branching unit with the *Mtv-9* SAg reference had a larger number of SAg cDNA isoforms than the *Mtv-9* branching unit in the genomic SAg tree. Similar to the genomic SAg tree, a few unique branching units, which are distant from the reference SAGs (*Mtv-8*, *Mtv-9*, *Mtv-17*, and *Mtv-30*), were formed in the SAg cDNA tree. One interesting finding is that none of the SAg cDNA isoforms isolated from the bone marrow were present in the branching units formed with the reference SAg of *Mtv-8* or *Mtv-17*. The branching pattern of the SAg tree using *in silico* translated amino acid sequences resembled its nucleotide (cDNA) sequence tree (Figure 2B). Fifty eight unique SAg isoforms (translated amino acids) were identified in different tissues and a number of SAg cDNA isoforms share amino acid sequences that are identical to the reference *Mtv-8*, *-9* and *-17* SAGs. The unique branching pattern of the SAg cDNA isoforms (Figure 2) compared to the pattern from the genomic SAg isoforms (Figure 1) indicate that the expression of certain SAg isoforms is tissue type specific in conjunction with a range of internal as well as external stress signals. No significant differences in mutation rates were observed between the hypervariable and non-hypervariable regions of the SAGs at both the genomic DNA and cDNA levels.

#### Examination of putative TCR V $\beta$ specificity of SAg cDNA isoforms isolated from various tissues

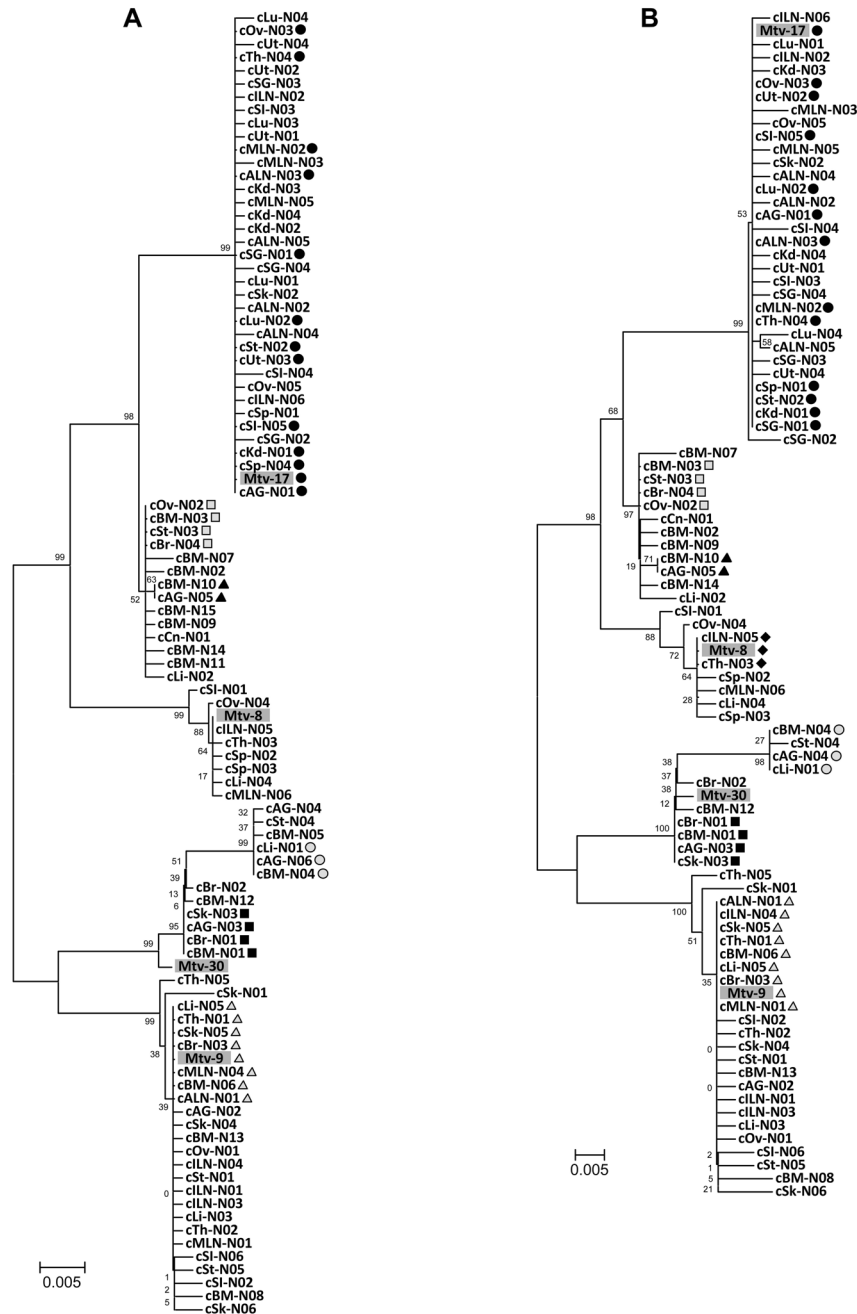
In this study, to determine whether changes in the hypervariable C-terminus regions of the SAg isoforms,

which are known to determine the TCR V $\beta$  specificity, affect their superantigenic function, we examined the putative TCR V $\beta$  specificity of the SAg cDNA isoforms isolated from various tissues. Initially, unique C-terminus sequences (~74 amino acids) of individual SAg cDNA isoforms were selected within each tissue, and a total of 56 sequences were identified from all 18 tissues (Figure 3A). A phylogenetic analysis of the 56 C-terminus sequences identified 17 unique hypervariable region sequences (Figure 3B). Then, the 17 SAg C-terminus sequences were subjected to alignment analyses to identify the regions responsible for determining their putative TCR V $\beta$  specificities (Figure 3C). The matching C-terminus sequences of the *Mtv-8*, *Mtv-9*, *Mtv-17*, and *Mtv-30* SAGs and their reported TCR V $\beta$  specificities were used as references [5,20,29,30]. Among the 17 unique C-terminus sequences, only four of them were 100 % homologous to the *Mtv-8*, *Mtv-9*, *Mtv-17*, or *Mtv-30* SAG (Figure 3C/D).

The C-terminal ~74 amino acid region has been used as a reference for the classification of MMTV SAGs into seven families in regard to their TCR V $\beta$  specificities [20,31]. These C-terminus regions from different MMTV SAGs are highly polymorphic. A region within the C-terminus (amino acid positions 42-74; Figure 3C) was determined to be important for TCR V $\beta$  specificity, including binding affinity [32,33]. Among the 17 unique SAg isoforms, 13 SAGs had non-synonymous point mutations in this region in comparison to the reference SAGs. However, little is known about the precise amino acid position and/or composition responsible for TCR V $\beta$  specificity in the C-terminal region. The MMTV SAGs, whose sequences are almost identical, often display slightly different TCR V $\beta$  specificities due to differences in binding affinity and/or differences in expression levels [30]. The results from this study indicate that the majority of the SAg isoforms identified in this study display unique C-terminus region sequences and are different from the reference endogenous MMTV SAGs. This finding may suggest that the TCR V $\beta$  specificity and binding affinity of some of these SAg isoforms may be altered, in part or full, due to changes in the interactions of the hypervariable C-terminus domain with the TCR V $\beta$  region. On the other hand, changes in certain amino acids in the SAg C-terminus region may not affect TCR V $\beta$  specificity at all [29]. It may be necessary to determine the TCR V $\beta$  specificity of each MMTV SAg isoform by an *in vitro* T-cell activation study.

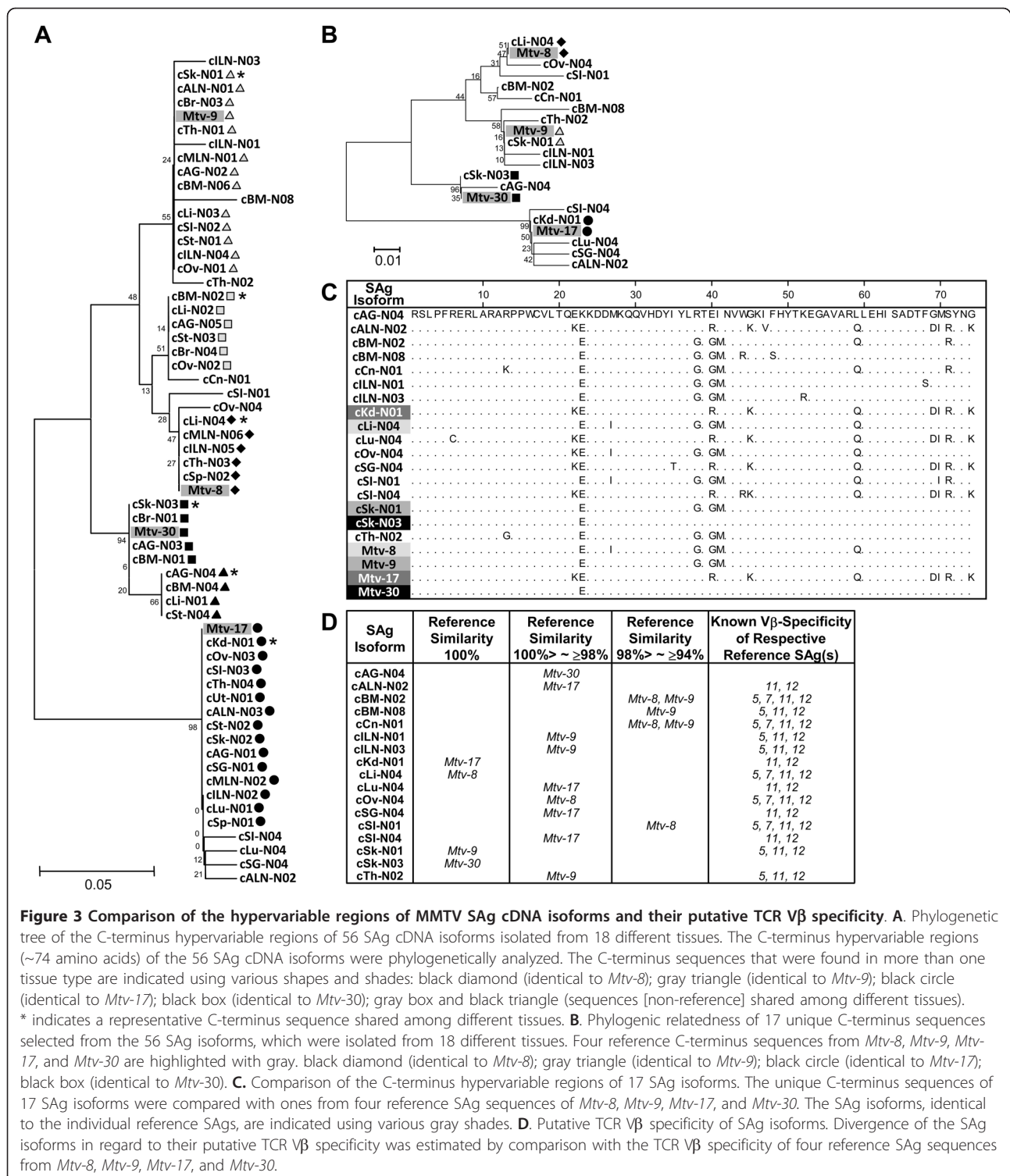
#### *Mtv-8* locus within the variable region of immunoglobulin $\kappa$ chain on chromosome 6

In this study, three MMTV proviral loci (*Mtv-8*, *Mtv-9*, and *Mtv-17*) were mapped on the C57BL/6J genome based on the NCBI database. Detailed maps of the genes



**Figure 2 MMTV SAg isoforms isolated from the cDNA from 18 different tissues of normal C57BL/6J mice. A.** Phylogenetic tree (nucleotide sequence) of MMTV SAg isoforms. Eighteen sets of unique MMTV SAg isoforms, which were isolated from 18 different tissues of normal C57BL/6J mice, were analyzed for their phylogenetic relatedness. A number of branching units of SAg isoforms were formed in the phylogenetic tree. Unique SAg isoforms that were found in more than one tissue type are indicated using various shapes and shades. Four reference SAg sequences from *Mtv-8*, *Mtv-9*, *Mtv-17*, and *Mtv-30* were included for this analysis. **B.** Phylogenetic tree (putative amino acid sequence) of SAg isoforms. Eighteen sets of unique SAg isoforms were phylogenetically evaluated and a phylogenetic tree with a number of unique branching units was formed. Unique SAg isoforms that were found in more than one tissue type are indicated using various shapes and shades. Four reference SAg sequences from *Mtv-8*, *Mtv-9*, *Mtv-17*, and *Mtv-30* were included for this analysis. black circle (identical to *Mtv-17*); gray triangle (identical to *Mtv-9*); black diamond (identical to *Mtv-8*); gray circle, black triangle, gray box, and black box (identical sequences among different tissue types). cLu (lung cDNA), cOv (ovary cDNA), cUt (uterus cDNA), cTh (thymus cDNA), cSG (salivary gland cDNA), cILN (inguinal lymph node cDNA), cSI (small intestine cDNA), cMLN (mesenteric lymph node cDNA), cALN (axillary lymph node cDNA), cKd (kidney cDNA), cSk (skin cDNA), cSt (stomach cDNA), cSp (spleen cDNA), cAG (adrenal gland cDNA), cBM (bone marrow cDNA), cBr (brain cDNA), cLi (liver cDNA), cCn (colon cDNA), N (normal tissue).

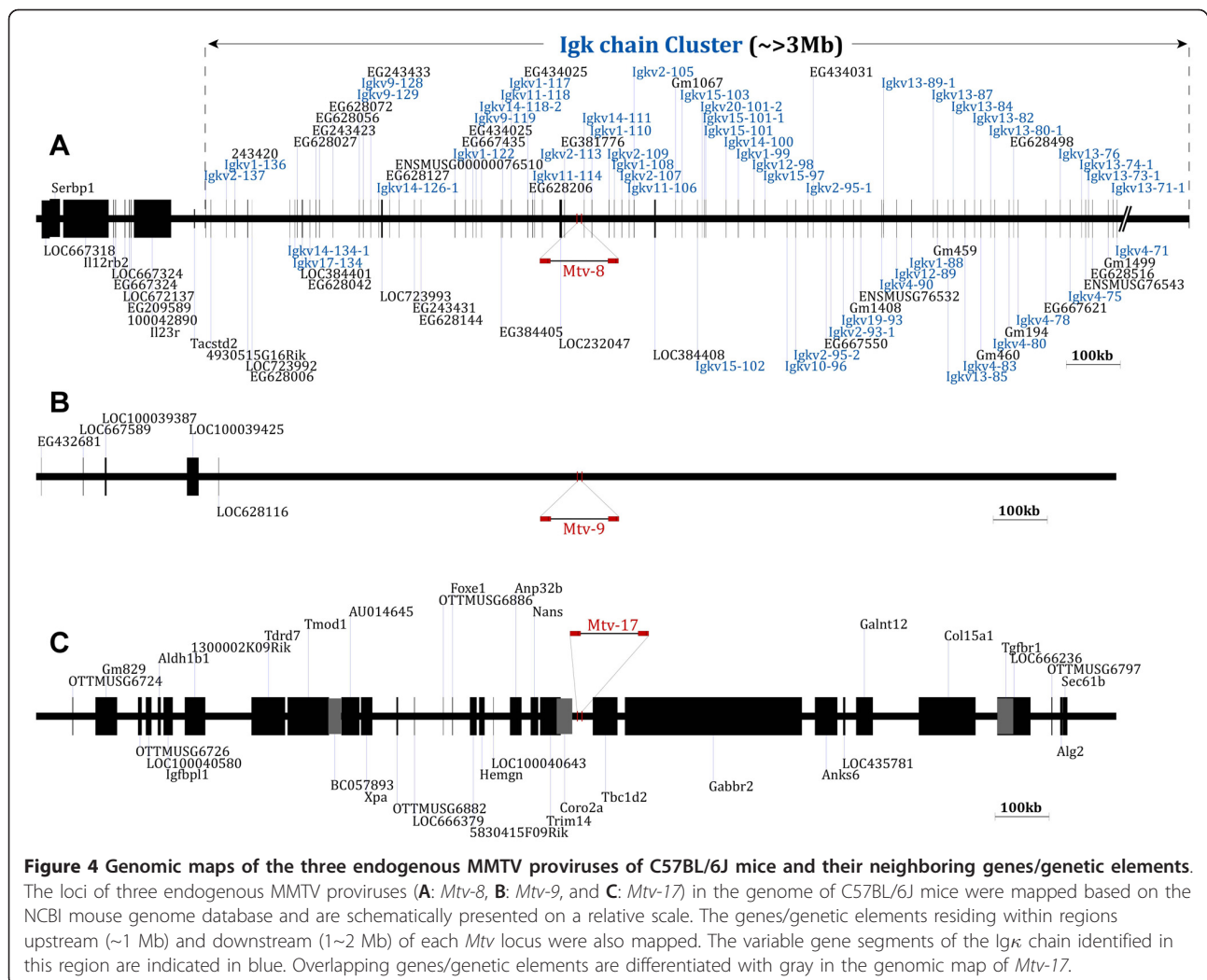




**Figure 3 Comparison of the hypervariable regions of MMTV SAG cDNA isoforms and their putative TCR Vβ specificity. A.** Phylogenetic tree of the C-terminus hypervariable regions of 56 SAG cDNA isoforms isolated from 18 different tissues. The C-terminus hypervariable regions (~74 amino acids) of the 56 SAG cDNA isoforms were phylogenetically analyzed. The C-terminus sequences that were found in more than one tissue type are indicated using various shapes and shades: black diamond (identical to *Mtv-8*); gray triangle (identical to *Mtv-9*); black circle (identical to *Mtv-17*); black box (identical to *Mtv-30*); gray box and black triangle (sequences [non-reference] shared among different tissues). \* indicates a representative C-terminus sequence shared among different tissues. **B.** Phylogenetic relatedness of 17 unique C-terminus sequences selected from the 56 SAG isoforms, which were isolated from 18 different tissues. Four reference C-terminus sequences from *Mtv-8*, *Mtv-9*, *Mtv-17*, and *Mtv-30* are highlighted with gray. black diamond (identical to *Mtv-8*); gray triangle (identical to *Mtv-9*); black circle (identical to *Mtv-17*); black box (identical to *Mtv-30*). **C.** Comparison of the C-terminus hypervariable regions of 17 SAG isoforms. The unique C-terminus sequences of 17 SAG isoforms were compared with ones from four reference SAG sequences of *Mtv-8*, *Mtv-9*, *Mtv-17*, and *Mtv-30*. The SAG isoforms, identical to the individual reference SAGs, are indicated using various gray shades. **D.** Putative TCR Vβ specificity of SAG isoforms. Divergence of the SAG isoforms in regard to their putative TCR Vβ specificity was estimated by comparison with the TCR Vβ specificity of four reference SAG sequences from *Mtv-8*, *Mtv-9*, *Mtv-17*, and *Mtv-30*.

and other genetic elements surrounding the loci of *Mtv-8*, *Mtv-9*, and *Mtv-17*, were established by surveying sequences upstream (~1 Mb) and downstream (1~2 Mb) of each locus and are presented in Figure 4. As expected, there were only three endogenous MMTV loci

(*Mtv-8* [chromosome 6], *Mtv-9* [chromosome 12], and *Mtv-17* [chromosome 4]) in the genome of C57BL/6J mice and the *Mtv-8* provirus was integrated into the variable region of immunoglobulin κ (Igκ) chain (Figure 4A). It needs to be noted that *Mtv-8* has



previously been mapped to this specific genomic region [34]. A very limited number of annotated genes/genetic elements were found in the region surrounding the *Mtv-9* locus on chromosome 12 (Figure 4B). Annotated genes/genetic elements near the *Mtv-8* locus on chromosome 6 of C57BL/6J genome are listed in Table 1.

It is documented that DNA sequences under the control of immunoglobulin gene promoters/enhancers are subjected to somatic hypermutation, which is frequently observed in the immunoglobulin variable gene segments after antigenic stimulation for a positive and/or a negative selection of developed B cells [35,36]. Based on the *Mtv-8*'s location in the variable region of *Igκ* gene cluster, we can speculate that the *Mtv-8* proviral sequence is subjected to somatic hypermutations following antigenic stimulation of B cells, which is reflected in certain *Mtv-8*-derived SAg isoforms identified in this study. It will be interesting to investigate whether the *Mtv-8* loci in other mouse strains, such as BALB/c and C3H, undergo

similar somatic hypermutation events in comparison to the other *Mtv* loci, which are not embedded near the immunoglobulin clusters. In addition, the finding that the *Mtv-8* provirus is integrated into the *Igκ* variable region suggests that it may be deleted from the genome depending on the structure of the variable regions of the individual chains during *Igκ* gene rearrangement in developing B cells. Thus, certain mature B cells may not be able to express the *Mtv-8* SAg and/or its isoforms.

### Conclusions

It has been reported that a peripheral selection event involving dynamic and persistent induction of T cell tolerance configures the peripheral T cell repertoire [37]. A range of factors, including an individual's genetic profile and pathophysiologic status, may contribute to the process of shaping the peripheral T cell repertoire. The existence of a substantially diverse population of MMTV SAg coding sequences (both genomic and



**Table 1 Annotated genes/genetic elements near the *Mtv-8* locus on chromosome 6 of C57BL/6J genome**

Gene ID	Location		Strand	Gene ID	Location		Strand
	Start	End			Start	End	
LOC667318	67202018	67217006	-	<b>Ig<math>\kappa</math>V2-109</b>	68252433	68253152	+
Serbp1	67216973	67235957	+	<b>Ig<math>\kappa</math>V1-108</b>	68262048	68262353	+
Il12rb2	67242012	67326131	-	<b>Ig<math>\kappa</math>V2-107</b>	68276092	68276746	+
LOC667324	67334405	67335335	-	<b>Ig<math>\kappa</math>V11-106</b>	68289521	68289989	+
EG667326	67339326	67339514	-	<b>Ig<math>\kappa</math>V2-105</b>	68298655	68299435	+
LOC672137	67356478	67356775	-	LOC384408	68339183	68336335	-
EG209589	67363870	67365006	-	Gm1067	68375599	68376066	+
100042890	67367652	67368047	-	<b>Ig<math>\kappa</math>V15-103</b>	68387462	68387919	+
Il23r	67372926	67441849	-	<b>Ig<math>\kappa</math>V15-102</b>	68416584	68416120	-
Tacstd2	67484053	67485816	-	<b>Ig<math>\kappa</math>V20-101-2</b>	68424882	68425092	+
<b><u>Ig<math>\kappa</math> Cluster</u></b>	<b><u>67505630 - 70676748</u></b>			<b>Ig<math>\kappa</math>V15-101-1</b>	68429076	68429567	+
<b>Ig<math>\kappa</math>V2-137</b>	67505630	67506210	+	<b>Ig<math>\kappa</math>V15-101</b>	68431415	68431712	+
4930515G16Rik	67515693	67515228	-	<b>Ig<math>\kappa</math>V14-100</b>	68469006	68469471	+
<b>Ig<math>\kappa</math>V1-136</b>	67543870	67544302	+	<b>Ig<math>\kappa</math>V1-99</b>	68491652	68492416	+
243420	67559739	67560502	+	<b>Ig<math>\kappa</math>V12-98</b>	68520757	68521229	+
LOC723992	67584114	67582894	-	<b>Ig<math>\kappa</math>V15-97</b>	68541374	68541826	+
EG628006	67591690	67591491	-	<b>Ig<math>\kappa</math>V10-96</b>	68582424	68581959	-
<b>Ig<math>\kappa</math>V14-134-1</b>	67661622	67661168	-	<b>Ig<math>\kappa</math>V2-95-2</b>	68598525	68597993	-
<b>Ig<math>\kappa</math>V17-134</b>	67671219	67670723	-	<b>Ig<math>\kappa</math>V2-95-1</b>	68620746	68621329	+
EG628027	67674908	67675655	+	EG434031	68630373	68630842	+
LOC384401	67685575	67684065	-	EG667550	68654972	68654502	-
EG628042	67698717	67698518	-	<b>Ig<math>\kappa</math>V2-93-1</b>	68663502	68662919	-
EG243423	67709694	67710407	+	<b>Ig<math>\kappa</math>V19-93</b>	68686758	68686291	-
EG628056	67716030	67716766	+	Gm1408	68705587	68705032	-
EG628072	67741040	67741505	+	ENSMUSG76532	68719097	68718549	-
<b>Ig<math>\kappa</math>V9-129</b>	67789787	67790260	+	<b>Ig<math>\kappa</math>V4-90</b>	68757702	68757174	-
<b>Ig<math>\kappa</math>V9-128</b>	67797403	67797868	+	<b>Ig<math>\kappa</math>V13-89-1</b>	68760489	68760537	+
EG243433	67811153	67811653	+	<b>Ig<math>\kappa</math>V12-89</b>	68785301	68784840	-
<b>Ig<math>\kappa</math>V14-126-1</b>	67826005	67826471	+	<b>Ig<math>\kappa</math>V1-88</b>	68813025	68812259	-
LOC723993	67833604	67830690	-	<b>Ig<math>\kappa</math>V13-87</b>	68852795	68853260	+
EG628127	67846171	67846636	+	Gm459	68860932	68860405	-
ENSMUSG76510	67863567	67864046	+	<b>Ig<math>\kappa</math>V13-85</b>	68880728	68880263	-
EG243431	67892534	67892070	-	<b>Ig<math>\kappa</math>V13-84</b>	68889596	68890061	+
EG628144	67904684	67904224	-	<b>Ig<math>\kappa</math>V4-83</b>	68912013	68911372	-
<b>Ig<math>\kappa</math>V1-122</b>	67966736	67967482	+	<b>Ig<math>\kappa</math>V13-82</b>	68929192	68929657	+
EG667435	67986812	67987312	+	Gm460	68941288	68940752	-
EG434025	67999977	68000448	+	<b>Ig<math>\kappa</math>V13-80-1</b>	68959137	68959507	+
<b>Ig<math>\kappa</math>V9-119</b>	68006339	68006804	+	<b>Ig<math>\kappa</math>V4-80</b>	68967074	68966552	-
<b>Ig<math>\kappa</math>V14-118-2</b>	68016363	68016822	+	Gm194	68993499	68992966	-
EG384405	68053427	68053083	-	EG628498	69001439	69001788	+
<b>Ig<math>\kappa</math>V11-118</b>	68055408	68055874	+	<b>Ig<math>\kappa</math>V4-78</b>	69010218	69009684	-
<b>Ig<math>\kappa</math>V1-117</b>	68071085	68071819	+	EG667621	69061426	69060898	-
EG434026	68101879	68102611	+	<b>Ig<math>\kappa</math>V13-76</b>	69087860	69088326	+
EG628206	68110791	68111710	+	<b>Ig<math>\kappa</math>V4-75</b>	69106653	69106112	-
<b>Ig<math>\kappa</math>V11-114</b>	68114453	68114917	+	<b>Ig<math>\kappa</math>V13-74-1</b>	69127410	69127781	+
<b>Ig<math>\kappa</math>V2-113</b>	68128795	68129558	+	ENSMUSG76543	69135355	69134820	-
LOC232047	68165365	68160919	-	<b>Ig<math>\kappa</math>V13-73-1</b>	69140067	69140276	+
EG381776	68169975	68170699	+	EG628516	69148110	69147577	-
<i>Mtv-8</i>	68192379	68193706	+	Gm1499	69177377	69176848	-
<b>Ig<math>\kappa</math>V14-111</b>	68206398	68206863	+	<b>Ig<math>\kappa</math>V13-71-1</b>	69185921	69186152	+
<b>Ig<math>\kappa</math>V1-110</b>	68220521	68221259	+	<b>Ig<math>\kappa</math>V4-71</b>	69193682	69193154	-

The Ig $\kappa$  variable gene segments located within 1 Mb upstream and 1 Mb downstream of *Mtv-8* locus are indicated in bold. The coordinates of the entire Ig $\kappa$  chain cluster are indicated (underlined).

expressed isoforms) may be directly linked to the differential as well as dynamic shaping of the peripheral T cell repertoire in mice. On the other hand, incomplete or failed induction of tolerance against the freshly formed endogenous SAg isoforms may lead to local as well as systemic accumulation of autoreactive T cell populations.

## Methods

### Animal experiments

Female C57BL/6J mice from the Jackson Laboratory (Bar Harbor, ME) were housed according to the guidelines of the National Institutes of Health. The Animal Use and Care Administrative Advisory Committee of the University of California, Davis, approved the experimental protocol. Mice were sacrificed by cervical dislocation followed by tissue collection.

### Cloning of SAg coding sequences from genomic DNAs and cDNAs

Total RNA isolation and cDNA synthesis were performed based on the protocols described previously [38]. Briefly, total RNA was isolated from the tissues using the RNeasy kit (Qiagen, Valencia, CA). Total RNA (100 ng) samples were subjected to reverse transcription using Sensiscript reverse transcriptase (Qiagen). The sequence of the oligo-dT primer was as follows: 5'-GGC CAC GCG TCG ACT AGT ACT TTT TTT TTT TTT TTT T-3'. The genomic DNAs from bone marrow, liver, and lung tissues of normal mice were prepared using a DNeasy Tissue kit (Qiagen). A set of primers, MTV-1B (forward: 5'-TGC CGC GCC TGC AGC AGA AAT G-3') and MTV-2A (reverse: 5'-TGT TAG GAC TGT TGC AAG TTT ACT C-3'), was used to amplify the MMTV SAg region from the cDNA of normal tissues [39]. PCR using these primers was performed with the following conditions: hot start of 3 minutes at 94°C and 33 cycles of 94°C for 30 seconds, 55°C for 1 minute, and 72°C for 1 minute. Another set of primers, 5'-SAg (forward: 5'-CGG AAT TCC GAA AGG GGA AAT GCC GCG CCT-3') and 3'-SAg (reverse: 5'-GAC GGC GGC CGC CCG CAA GGT TGG GCT CAT AA-3'), was used to amplify the SAg region from the genomic DNA of normal tissues. The following PCR condition was applied with these primers: hot start of 3 minutes at 94°C and 30 cycles of 94°C for 30 seconds, 50°C for 1 minute, and 72°C for 1 minute.

PCR products of the MMTV SAg regions were cloned into a pGEM-T Easy vector (Promega, Madison, WI). Sequencing was performed at the Molecular Cloning Laboratory (South San Francisco, CA). Sequences were trimmed for the SAg coding sequence before alignment and open reading frame (ORF) analyses using the LaserGene program (DNASTAR, Madison, WI). The following

SAg clones were isolated from individual experimental groups and subjected to downstream analyses: 45 clones from genomic DNA-normal bone marrow, 30 clones from genomic DNA-normal lung, 23 clones from genomic DNA-normal liver, 23 clones from cDNA-normal bone marrow, and 4~6 clones from cDNA-all normal tissues except bone marrow.

### Phylogenetic analysis of SAg sequences

Phylogenetic analyses of the SAg coding sequences and translated sequences (both full-length and 74 amino acids of C-terminus hypervariable region) were performed using the neighbor-joining method within the MEGA4 program [40,41]. Bootstrapping was performed with 100 replications to evaluate the statistical confidence of branching patterns.

### Evaluation of putative TCR V $\beta$ specificity of SAg isoforms

The C-terminus hypervariable regions (~74 amino acids) of the individual SAg isoforms were compared with the same regions of the reference SAg sequences of which TCR V $\beta$  specificities were previously defined using the Lasergene program (DNASTAR) [5,11,20,42,43]. The percentage similarity of the C-terminus regions of the SAg isoforms to the references was calculated.

### Mapping of MMTV proviruses and their neighboring genes/genetic elements

Endogenous MMTV proviruses residing on the genome of C57BL/6J mice were mapped by a BLAST search of the National Center for Biotechnology Information (NCBI) database using the SAg sequences of *Mtv-8*, *Mtv-9*, and *Mtv-17* as probes [31,44]. In addition, the genes/genetic elements neighboring the individual proviral loci were mapped by surveying the genomic region within 1 Mb upstream and downstream regions using both the Ensembl and NCBI genome databases.

### Acknowledgements

This study was supported by grants from Shriners of North America (No. 86800 to KC and No. 84308 to YKL [postdoctoral fellowship]) and the National Institutes of Health (R01 GM071360 to KC).

### Authors' contributions

This study was conceived, designed, and managed by KC. DGG participated in active scientific discussion. YKL, SC, and AC participated in the collection and analysis of the results, and YKL and SC finalized the figures. YKL also contributed to the drafting of the manuscript. All authors read and approved the final manuscript.

Received: 31 December 2009 Accepted: 18 January 2011  
Published: 18 January 2011

### References

1. Waterston RH, Lindblad-Toh K, Birney E, Rogers J, Abril JF, Agarwal P, Agarwala R, Ainscough R, Alexandersson M, An P, et al: Initial sequencing and comparative analysis of the mouse genome. *Nature* 2002, **420**:520-62.

2. Kozak C, Peters G, Pauley R, Morris V, Michalides R, Dudley J, Green M, Davisson M, Prakash O, Vaidya A, et al: **A standardized nomenclature for endogenous mouse mammary tumor viruses.** *J Virol* 1987, **61**:1651-4.
3. Peters G, Placzek M, Brookes S, Kozak C, Smith R, Dickson C: **Characterization, chromosome assignment, and segregation analysis of endogenous proviral units of mouse mammary tumor virus.** *J Virol* 1986, **59**:535-44.
4. Peterson DO, Kriz KG, Marich JE, Toohey MG: **Sequence organization and molecular cloning of mouse mammary tumor virus DNA endogenous to C57BL/6 mice.** *J Virol* 1985, **54**:525-31.
5. Scherer MT, Ignatowicz L, Pullen A, Kappler J, Marrack P: **The use of mammary tumor virus (Mtv)-negative and single-Mtv mice to evaluate the effects of endogenous viral superantigens on the T cell repertoire.** *J Exp Med* 1995, **182**:1493-504.
6. Michalides R, van Nie R, Nusse R, Hynes NE, Groner B: **Mammary tumor induction loci in GR and DBA/J mice contain one provirus of the mouse mammary tumor virus.** *Cell* 1981, **23**:165-73.
7. van Nie R, Verstraeten AA: **Studies of genetic transmission of mammary tumour virus by C3Hf mice.** *Int J Cancer* 1975, **16**:922-31.
8. van Nie R, Verstraeten AA, De Moes J: **Genetic transmission of mammary tumour virus by GR mice.** *Int J Cancer* 1977, **19**:383-90.
9. Verstraeten AA, van Nie R: **Genetic transmission of mammary tumour virus in the DBA/J mouse strain.** *Int J Cancer* 1978, **21**:473-5.
10. Choi Y, Kappler JW, Marrack P: **A superantigen encoded in the open reading frame of the 3' long terminal repeat of mouse mammary tumour virus.** *Nature* 1991, **350**:203-7.
11. Korman AJ, Bourgairel P, Meo T, Rieckhof GE: **The mouse mammary tumor virus long terminal repeat encodes a type II transmembrane glycoprotein.** *Embo J* 1992, **11**:1901-5.
12. Herman A, Kappler JW, Marrack P, Pullen AM: **Superantigens: mechanism of T-cell stimulation and role in immune responses.** *Annu Rev Immunol* 1991, **9**:745-72.
13. Herrmann T, MacDonald HR: **T cell recognition of superantigens.** *Curr Top Microbiol Immunol* 1991, **174**:21-38.
14. Acha-Orbea H, Shakhov AN, Scarpellino L, Kolb E, Muller V, Vessaz-Shaw A, Fuchs R, Blochlinger K, Rollini P, Billotte J, et al: **Clonal deletion of V beta 14-bearing T cells in mice transgenic for mammary tumour virus.** *Nature* 1991, **350**:207-11.
15. Beutner U, Frankel WN, Cote MS, Coffin JM, Huber BT: **Mls-1 is encoded by the long terminal repeat open reading frame of the mouse mammary tumor provirus Mtv-7.** *Proc Natl Acad Sci USA* 1992, **89**:5432-6.
16. Blackman MA, Gerhard-Burgert H, Woodland DL, Palmer E, Kappler JW, Marrack P: **A role for clonal inactivation in T cell tolerance to Mls-1a.** *Nature* 1990, **345**:540-2.
17. Kappler JW, Staerz U, White J, Marrack PC: **Self-tolerance eliminates T cells specific for Mls-modified products of the major histocompatibility complex.** *Nature* 1988, **332**:35-40.
18. MacDonald HR, Schneider R, Lees RK, Howe RC, Acha-Orbea H, Festenstein H, Zinkernagel RM, Hengartner H: **T-cell receptor V beta use predicts reactivity and tolerance to Mlsa-encoded antigens.** *Nature* 1988, **332**:40-5.
19. Woodland DL, Lund FE, Happ MP, Blackman MA, Palmer E, Corley RB: **Endogenous superantigen expression is controlled by mouse mammary tumor proviral loci.** *J Exp Med* 1991, **174**:1255-8.
20. Acha-Orbea H, MacDonald HR: **Superantigens of mouse mammary tumor virus.** *Annu Rev Immunol* 1995, **13**:459-86.
21. Rammensee HG, Kroschewski R, Frangoulis B: **Clonal anergy induced in mature V beta 6+ T lymphocytes on immunizing Mls-1b mice with Mls-1a expressing cells.** *Nature* 1989, **339**:541-4.
22. Webb S, Morris C, Sprent J: **Extrathymic tolerance of mature T cells: clonal elimination as a consequence of immunity.** *Cell* 1990, **63**:1249-56.
23. Carsetti R, Rosado MM, Wardmann H: **Peripheral development of B cells in mouse and man.** *Immunol Rev* 2004, **197**:179-91.
24. Melchers F, Andersson J: **Proliferation and maturation of bone marrow-derived lymphocytes.** *Soc Gen Physiol Ser* 1974, **29**:217-31.
25. Preston BD, Dougherty JP: **Mechanisms of retroviral mutation.** *Trends Microbiol* 1996, **4**:16-21.
26. Salmons B, Knedlitschek G, Kennedy N, Groner B, Ponta H: **The endogenous mouse mammary tumour virus locus Mtv-8 contains a defective envelope gene.** *Virus Res* 1986, **4**:377-89.
27. Golovkina TV, Prakash O, Ross SR: **Endogenous mouse mammary tumor virus Mtv-17 is involved in Mtv-2-induced tumorigenesis in GR mice.** *Virology* 1996, **218**:14-22.
28. Sarkar NH: **Mouse mammary tumor virus derived from wild mice does not target Notch-4 protooncogene for the development of mammary tumors in inbred mice.** *Virology* 2009, **388**:121-7.
29. Wrona TJ, Lozano M, Binzhazim AA, Dudley JP: **Mutational and functional analysis of the C-terminal region of the C3H mouse mammary tumor virus superantigen.** *J Virol* 1998, **72**:4746-55.
30. Luther SA, Acha-Orbea H: **Mouse mammary tumor virus: immunological interplays between virus and host.** *Adv Immunol* 1997, **65**:139-243.
31. Brandt-Carlson C, Butel JS, Wheeler D: **Phylogenetic and structural analyses of MMTV LTR ORF sequences of exogenous and endogenous origins.** *Virology* 1993, **193**:171-85.
32. Yazdanbakhsh K, Park CG, Winslow GM, Choi Y: **Direct evidence for the role of COOH terminus of mouse mammary tumor virus superantigen in determining T cell receptor V beta specificity.** *J Exp Med* 1993, **178**:737-41.
33. Baribaud F, Wirth S, Maillard I, Valsesia S, Acha-Orbea H, Diggelmann H: **Identification of key amino acids of the mouse mammary tumor virus superantigen involved in the specific interaction with T-cell receptor V (beta) domains.** *J Virol* 2001, **75**:7453-61.
34. Yang JN, Dudley JP: **The endogenous Mtv-8 provirus resides within the V kappa locus.** *J Virol* 1991, **65**:3911-4.
35. Peters A, Storb U: **Somatic hypermutation of immunoglobulin genes is linked to transcription initiation.** *Immunity* 1996, **4**:57-65.
36. Yang SY, Fugmann SD, Schatz DG: **Control of gene conversion and somatic hypermutation by immunoglobulin promoter and enhancer sequences.** *J Exp Med* 2006, **203**:2919-28.
37. Blish CA, Gally BJ, Turk GL, Kline KM, Wheat W, Fink PJ: **Chronic modulation of the TCR repertoire in the lymphoid periphery.** *J Immunol* 1999, **162**:3131-40.
38. Cho K, Adamson LK, Greenhalgh DG: **Induction of murine AIDS virus-related sequences after burn injury.** *J Surg Res* 2002, **104**:53-62.
39. Xu L, Wrona TJ, Dudley JP: **Exogenous mouse mammary tumor virus (MMTV) infection induces endogenous MMTV sag expression.** *Virology* 1996, **215**:113-23.
40. Kumar S, Tamura K, Nei M: **MEGA3: Integrated software for Molecular Evolutionary Genetics Analysis and sequence alignment.** *Brief Bioinform* 2004, **5**:150-63.
41. Saitou N, Nei M: **The neighbor-joining method: a new method for reconstructing phylogenetic trees.** *Mol Biol Evol* 1987, **4**:406-25.
42. Donehower LA, Fleurdeley B, Hager GL: **Further evidence for the protein coding potential of the mouse mammary tumor virus long terminal repeat: nucleotide sequence of an endogenous proviral long terminal repeat.** *J Virol* 1983, **45**:941-9.
43. King LB, Lund FE, White DA, Sharma S, Corley RB: **Molecular events in B lymphocyte differentiation. Inducible expression of the endogenous mouse mammary tumor proviral gene, Mtv-9.** *J Immunol* 1990, **144**:3218-27.
44. Kuo WL, Vilander LR, Huang M, Peterson DO: **A transcriptionally defective long terminal repeat within an endogenous copy of mouse mammary tumor virus proviral DNA.** *J Virol* 1988, **62**:2394-402.

doi:10.1186/1471-2172-12-5

**Cite this article as:** Lee et al.: Prevalent *de novo* somatic mutations in superantigen genes of mouse mammary tumor viruses in the genome of C57BL/6J mice and its potential implication in the immune system. *BMC Immunology* 2011 **12**:5.