

UCLA
Contemporary Music Score Collection

Title

Paradoxe

Permalink

<https://escholarship.org/uc/item/5tg8t9jd>

Author

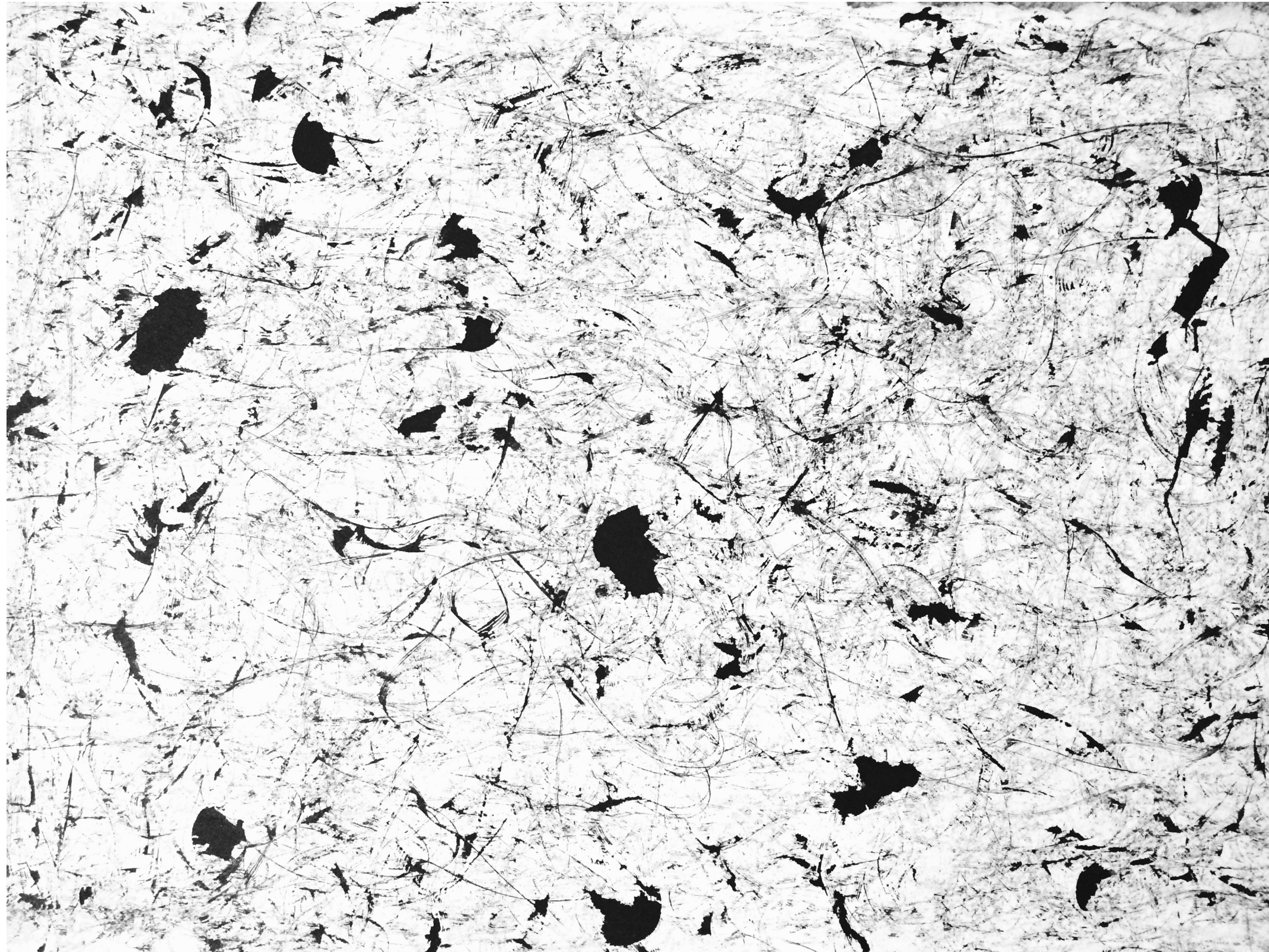
Richardson, Ben

Publication Date

2020

PARADOXE

for solo piano



Benjamin James Richardson

Written August 2014 through September 2014; revised June 2015

Contact: benjamesrich@gmail.com

Cover by Jonathan Richardson: jclarkrichardson@gmail.com

therichardsonbrothers.com

PERFORMANCE NOTES

In **TEMPO 1** sections, grace notes preceding chords should be unhurried and may be played slower than notated if the performer wishes.

Mm. 43-44 may be taken at a slightly slower tempo if necessary.

PROGRAM NOTE

This piece's premise came from passages of Blaise Pascal's incomplete work of prose, *Pensées* (first published in 1670, with many editions and versions following). Particularly, it stems from the paradoxical and mercurial aspects of human nature that Pascal discusses.

Paradoxe

Benjamin J. Richardson (ASCAP)

TEMPO I ♩ = 50
Mysteriously

TEMPO II ♩ = 84
capriciously

A

l.v.

p *pp* *p* *pp* *p* *mf* *sfz* *sfz*

Ped.

aggressively

f *sf* *sfz* *sfz* *subito p* *f*

B *weightlessly*

8va

tr *tr* *ff* *ff* *subito p* *sim.*

29 *mf* *non. rit.* **TEMPO I** (♩. = 50) *tranquil* **C** **TEMPO II** (♩. = 84) *vehemently* *pp* *ff*

39 *ff* *8va*

45 *non. rit.* **TEMPO I** *subito pp* *l.v.* *RH* *p* *sim.* *p*

D
TEMPO II

53 *ff* *non. rit.* **TEMPO I** *sim.*

61 *subito pp* *p* **RH.** *Ped.*

62 *cantabile* *pp* **TEMPO II** *subito ff*

68 *Ped.*

69 **TEMPO I** *pp* *p* *mf* *l.v.*

75 *Ped.*

78 *roll gently* *sim.* *8va* **TEMPO II** *non. rit.*

mp *p* *pp* *p* *ff*

dying away... *growing exponentially...*

88 $\text{♩} = 44$ **Maestoso** *8va* *Soft yet resolute* *l.v.*

fff *fff* *mp*

Ped. *pedal sim.*