

UC Irvine

UC Irvine Previously Published Works

Title

The Interplay Between Thyroid Dysfunction and Kidney Disease

Permalink

<https://escholarship.org/uc/item/5tp6q77h>

Journal

Seminars in Nephrology, 41(2)

ISSN

0270-9295

Authors

Narasaki, Yoko
Sohn, Peter
Rhee, Connie M

Publication Date

2021-03-01

DOI

10.1016/j.semnephrol.2021.03.008

Peer reviewed



Published in final edited form as:

Semin Nephrol. 2021 March ; 41(2): 133–143. doi:10.1016/j.semnephrol.2021.03.008.

The Interplay Between Thyroid Dysfunction and Kidney Disease

Yoko Narasaki, MS, PhD¹, Peter Sohn, MD, MPH¹, Connie M. Rhee, MD, MSc¹

(¹) Harold Simmons Center for Chronic Disease Research and Epidemiology, Division of Nephrology, Hypertension and Kidney Transplantation, University of California Irvine, Orange, CA.

Abstract

Hypothyroidism is a highly prevalent endocrine complication in chronic kidney disease (CKD) patients. A large body of evidence has shown that there is a bi-directional relationship between thyroid dysfunction and kidney disease, yet there are many remaining gaps in knowledge in regards to the clinical management of hypothyroidism CKD patients, including those receiving hemodialysis and peritoneal dialysis. Given that hypothyroidism has been associated with many deleterious outcomes including higher risk of 1) mortality, 2) cardiovascular disease, 3) impaired health related quality of life, and 4) altered body composition in both non-CKD and CKD patients, future research is needed to establish the appropriate screening, diagnosis, and treatment approaches in these populations.

Keywords

Thyroid function; thyrotropin; hypothyroidism; hyperthyroidism; chronic kidney disease; dialysis

Introduction

Thyroxine (T4) and triiodothyronine (T3), which account for 85–90% and 10–15% of circulating thyroid hormone, respectively, are produced and secreted by the thyroid gland under tight regulation of the hypothalamus-pituitary-thyroid axis.¹ Although T4 is solely synthesized by the thyroid gland, a large proportion of T3 or reverse T3 (rT3) is produced as metabolically active or inactive forms of thyroid hormone, respectively, in peripheral organs including the kidney.² More than 99% of T4 and T3 molecules are tightly bound to the carrier proteins, namely thyroid binding globulin (TBG), transthyretin, and albumin, and only a small fraction circulates as free hormone, which act on target tissues (Figure 1).¹

Because thyroid hormone has numerous effects on nearly all tissues, thyroid dysfunction may lead to various complications across multiple end-organs including the kidney.³

Corresponding Author and Reprint Requests: Connie M. Rhee, MD, MSc, Harold Simmons Center for Kidney Disease Research and Epidemiology, Division of Nephrology and Hypertension, University of California Irvine, 101 The City Drive South, City Tower, Orange, California 92868-3217, Tel: (714) 456-5142, Fax: (714) 456-6034, crhee1@uci.edu.

Conflict of Interest:

None of the authors have relevant disclosures to report.

Publisher's Disclaimer: This is a PDF file of an unedited manuscript that has been accepted for publication. As a service to our customers we are providing this early version of the manuscript. The manuscript will undergo copyediting, typesetting, and review of the resulting proof before it is published in its final form. Please note that during the production process errors may be discovered which could affect the content, and all legal disclaimers that apply to the journal pertain.

Hypothyroidism is one of the most common endocrine disorders encountered in CKD patients, and it is associated with a higher risk of mortality,^{4–9} cardiovascular disease,^{10,11} impaired health related quality of life (HRQOL),^{12–15} and altered body composition in this population.^{16–18} In the non-CKD population, hypothyroidism is more commonly observed among 1) patients of older age, 2) women vs. men, 3) Caucasians vs. African-Americans, as well as those 4) residing in areas of high iodine intake, 5) with prior exposure to external beam radiation, 6) with a family history of thyroid disease, and/or 7) with ingestion of amiodarone (i.e., an iodine-containing medication).^{19,20} With respect to the latter, given that CKD patients have impaired renal excretion of iodine, they may be at even greater risk for thyroid complications ensuing from excess iodine intake from dietary and/or medication sources as compared with the general population.²¹ In this review, we will discuss the epidemiology, diagnostic considerations, prognostic implications, and management of thyroid dysfunction in CKD patients.

Prevalence of thyroid dysfunction in kidney disease

Hypothyroidism is a relatively common endocrine disorder in the general population,^{22,23} and it is defined by a serum thyrotropin (TSH) concentration above the upper limit of the reference range accompanied by a serum free T4 (FT4) concentration that is low (i.e., overt hypothyroidism) or within reference range (i.e., subclinical hypothyroidism).^{24,25} In the general population, subclinical disease accounts for a large proportion of hypothyroidism,¹⁹ with the prevalence ranging between 4% to 10%. Similar to the non-CKD population, subclinical disease is more common than overt hypothyroidism among CKD patients,²⁶ while non-dialysis dependent^{26–32} and dialysis-dependent CKD patients^{4,6–8,33–38} demonstrate a substantially higher prevalence of thyroid dysfunction as compared with the general population (Table 1). Moreover, large population-based studies show that there is an increasingly higher prevalence of hypothyroidism with incrementally lower estimated glomerular filtration rates (eGFRs).^{26,28,30,31} Conversely, in the general population, hyperthyroidism is less commonly observed than hypothyroidism, and there has been comparatively less study of this spectrum of thyroid disease in CKD patients.³⁹ While some^{40–42} but not all⁴³ studies have shown that hyperthyroidism is associated with higher risk of incident CKD and CKD progression, further research in this area is needed.

Causes of thyroid dysfunction in kidney disease

Although the mechanistic link between thyroid and kidney disease has not been fully elucidated, growing evidence suggests that there is a bi-directional link between these two entities.^{44,45}

Thyroid dysfunction leading to kidney disease

A large body of evidence has shown that thyroid hormone has effects on both kidney structure and function (Figure 2).³ Hence, if left untreated, hypothyroidism may adversely impact kidney structure in both development and adulthood, which may lead to downstream alterations in kidney function.³ In experimental models, hypothyroidism has been shown to lead to a decreased kidney-to-body weight ratio,^{46,47} truncations in tubular mass,^{46,48,49} and various alterations in glomerular architecture (i.e., decreased glomerular basement

membrane [GBM] volume and area, GBM thickening, mesangial matrix expansion, increased glomerular capillary permeability).^{50–52} Notably, an increased prevalence of renal and urinary abnormalities has been observed among children with congenital hypothyroidism.⁵³

Hypothyroidism may also lead to kidney dysfunction via direct and indirect pathways. First, hypothyroidism directly alters 1) renin–angiotensin–aldosterone system (RAAS) production and activity,^{54–57} leading to impaired autoregulation of renal perfusion.⁴⁵ Hypothyroidism also affects the expression and/or activity of a number of renal tubular ion transporters (i.e., Na⁺-K⁺-2Cl⁻,⁵⁸ Na⁺-Pi cotransporter,⁵⁹ Na⁺-H⁺ exchanger,⁶⁰ Na⁺-K⁺-ATPase^{61,62}), including 2) alterations in renal basolateral chloride channel expression resulting in increased distal chloride delivery and tubulo-glomerular feedback.⁵⁵ In addition, hypothyroidism may lead to 3) decreased cardiac output^{3,54} as a consequence of systolic and diastolic dysfunction and decreased red blood cell production and 4) intrarenal vasoconstriction resulting from reduced synthesis and activity of renal vasodilators (i.e., nitric oxide, adrenomedullin),^{3,55,63} thereby reducing renal perfusion. Indeed, animal models have confirmed that hypothyroidism leads to reductions in single nephron glomerular filtration rate (GFR), renal plasma flow (RPF), and glomerular transcapillary hydrostatic pressure.^{64,65} These observations have been corroborated by human case series showing that patients with severe hypothyroidism experienced reductions in RPF and GFR as measured by creatinine-based estimating equations and gold-standard isotopic scans, which were reversed with exogenous thyroid hormone supplementation.^{3,55,66–68} Several large population-based studies have also shown an association between elevated TSH levels and higher risk of incident CKD and CKD progression,^{41,42,69} and in one rigorous study of non-dialysis dependent CKD (NDD-CKD) patients with subclinical hypothyroidism, those treated with exogenous thyroid hormone replacement had an amelioration of eGFR decline over time.⁷⁰

Kidney disease leading to thyroid dysfunction

Kidney disease and the uremic milieu may also lead to perturbations in thyroid status via multiple pathways. First, CKD patients may frequently have metabolic acidosis, which has been shown to result in thyroid status alterations (i.e., elevated TSH and low T4 and/or T3 levels) that may be improved with oral sodium citrate or sodium bicarbonate therapy.^{71,72} Second, given that the vast majority of circulating thyroid hormone is protein-bound, heavy protein losses in nephrotic syndrome or from the dialysate in peritoneal dialysis patients may lead to total body thyroid hormone depletion.^{73,74} Third, various dietary factors commonly observed in CKD such as iodine retention³² and selenium deficiency⁷⁵ may also contribute to thyroid dysfunction as further described below. Finally, CKD patients with malnutrition, inflammation, and uremia may manifest thyroid patterns resembling hypothyroidism (i.e., low T3 and/or T4 accompanied by normal TSH levels) which may in fact be due to non-thyroidal illness (i.e., thyroid functional test alterations associated with underlying ill health in the absence of thyroid pathology).^{75,76}

Interpretation of thyroid tests in kidney disease

Thyrotropin (TSH)

In the general population, serum TSH is considered the first-line test for thyroid functional assessment,⁷⁷ and since the late 1980's the most widely used assays are highly sensitive third-generation immunometric tests (i.e., sandwich or non-competitive assays). Given that TSH has a negative inverse logarithmic association with T3 and T4 (i.e., small changes in T3 and T4 induce exponential changes in TSH), it is regarded as the most sensitive and specific single biochemical measure of thyroid function.⁷⁸ Serum TSH is also a more robust thyroid function metric in non-thyroidal illness. While low T3 and T4 levels are typically observed with mild to moderate illness, TSH typically remains normal until the onset of severe, critical illness.⁷⁹ Consequently, serum TSH is typically used for screening, diagnosis, and treatment monitoring and titration in primary hypothyroidism. In CKD patients, it bears mention that certain TSH alterations may be observed, including impaired clearance, protracted half-life, blunted pulsatility, altered glycosylation leading to impaired bioactivity, and decreased response to thyrotropin-releasing hormone (TRH).^{38,80}

Triiodothyronine (T3)

In CKD patients, one of the most frequently observed alterations in thyroid status include reduced circulating free T3 levels.⁸¹ Notably, the majority of T3 is produced by the peripheral deiodination of T4-to-T3 by type 1 and 2 5'-deiodinase enzymes.³ Various CKD-related factors may lead to reduced conversion of T4-to-T3 in peripheral organs including the kidneys.⁸²⁻⁸⁵ For example, chronic metabolic acidosis affects iodothyronine deiodination, reducing the peripheral conversion of T4-to-T3.⁷² The presence of inflammatory cytokines such as tumor necrosis factor (TNF)- α ^{86,87} and interleukin (IL)-1⁸⁷ also inhibit the expression of type 1 5'-deiodinase needed for T4-to-T3 conversion. In addition, the peripheral deiodination of T4-to-T3 is also reduced in the setting of nonthyroidal illness⁷⁶ and specific medications (i.e., glucocorticoids).²

Reverse T3

Reverse T3 is a metabolically inactive form of thyroid hormone that is produced from its precursor, T4, by the type 3 5'-deiodinase enzyme.^{2,76} The type 3 5'-deiodinase enzyme also degrades reverse T3 into inactive diiodothyronine. In hypothyroidism, reduced production of T4 typically results in low reverse T3 concentrations, although levels may be normal or high in mild hypothyroidism. In non-thyroidal illness, reverse T3 levels are typically elevated due to increased production and reduced decomposition.^{38,76} While reverse T3 is oftentimes normal in kidney dysfunction, further research is needed to determine the reliability of this metric in the interpretation of thyroid functional tests CKD.

Thyroxine (T4)

The vast majority of circulating T4 is bound to proteins, which include thyroid hormone-binding globulin (TBG) and, to a lesser extent, prealbumin and albumin.⁸⁸ Hence, total T4 assays (i.e., which capture both free and protein-bound T4) may result in spuriously low

total T4 levels in conditions that lead to low binding protein levels, such as malnutrition, nephrotic syndrome, and heavy protein losses in the peritoneal effluent.⁸⁸

Therefore, measuring free T4 levels (i.e., the minute fraction of biologically active, non-protein bound T4) has superseded total T4 testing in clinical practice.⁷⁷ However, it bears mention routinely used free T4 assays (i.e., analog method) are dependent upon protein-hormone binding, and may not be accurate in 1) abnormal protein states (i.e., hypoalbuminemia, pregnancy) or 2) in the presence of certain medications (i.e., furosemide, heparin) or substances that impair protein-hormone binding (e.g., uremic toxins such as urea, creatinine, indoles, and phenols).^{76,88} In contrast, direct free T4 assays separate free and protein-bound T4 using equilibrium dialysis or ultrafiltration, and use liquid chromatography tandem mass spectrometry or radioimmunoassay to measure free T4.^{88,89} While direct free T4 levels have shown stronger inverse correlations with the log of TSH compared with indirect FT4 in populations with normal and altered protein-hormone binding (e.g., pregnancy),⁹⁰⁻⁹² further studies are needed to determine their utility in the classification of thyroid function and prediction of outcomes in CKD.

Dietary intake and thyroid dysfunction in CKD

Dietary intake is one of the most potent factors influencing hypothalamus-pituitary-thyroid axis activity.⁹³ For example, iodine is an essential component of thyroid hormone, which is naturally present in foods that are grown or raised in marine environments (i.e., fish and seaweed),⁹⁴ and seaweed and seaweed-based food additives (i.e., alginates, agar-agar, carrageenan, and other seaweed based thickeners)⁹⁵ are a source of iodine in a wide variety of foods.⁹⁶⁻⁹⁸ In addition, milk^{99,100} and eggs¹⁰¹ potentially contain iodine due to iodine supplemented animal feeds and their carry-over into animals. However, given that this element is largely renally cleared, iodine retention due to impaired kidney excretion has been hypothesized as a possible mechanism for hypo- and hyperthyroidism in CKD via the Wolff-Chaikoff effect and Jod-Basedow phenomenon, respectively.²¹ Several case reports and series have reported iodine-associated hypothyroidism among adult and pediatric dialysis patients consuming high iodine diets (e.g., seaweed)³² as well from exposure to non-dietary iodine sources (i.e., povidine-iodine cleansing agents,¹⁰² iodinated-contrast media¹⁰³).

Other dietary components also play an important roles in thyroidology, including selenium, l-carnitine, myo-inositol, melatonin, and resveratrol.¹⁰⁴ With respect to the former, selenium is an important trace mineral in the human diet that modulates the peripheral conversion of T4-to-T3 by controlling iodothyronine deiodinase activity.⁷⁵ However, in a double-blind randomized controlled trial of hemodialysis patients with selenium deficiency who received oral selenium supplementation vs. placebo, there were no significant differences in TSH, T4, or T3 resin uptake levels after three months.¹⁰⁵ Future studies evaluating the impact of dietary intake upon thyroid status in CKD patients will enhance our understanding of the appropriate nutritional management of this population.

Thyroid dysfunction and outcomes in kidney disease

There is a growing body of evidence showing that hypothyroidism and other thyroid functional test derangements are associated with higher mortality risk, cardiovascular disease, and worse patient-centered outcomes in the advanced CKD population (Figure 3).

Survival

Multiple studies have shown that hypothyroidism ascertained by higher serum TSH levels is associated with higher all-cause mortality risk in both NDD-CKD and dialysis-dependent CKD patients. Among 227,422 US Veterans with stage 3 CKD, higher baseline and time-dependent TSH levels in the hypothyroid and high-normal range (>5.0 and 3.0 – 5.0 mIU/L, respectively) were each associated with higher mortality risk even after accounting for differences in socio-demographics and comorbidity status.⁵ In another national study of 15,335 NDD-CKD patients transitioning to ESRD, higher TSH levels in pre-ESRD period were associated with higher death risk after dialysis initiation.⁹ Across multiple studies of dialysis patients, TSH levels in the high-normal range in hemodialysis patients (i.e., >2.1 mIU/L⁸ and >3.0 mIU/L^{4,6}) and exceeding the reference range in peritoneal dialysis patients (i.e., >5.0 mIU/L⁷) have been associated with worse survival.

Cardiovascular outcomes

In the general population, hypothyroidism is a known cardiovascular risk factor.⁵⁴ Hence, given the exceedingly high cardiovascular mortality of ESRD patients (i.e., 40% of all deaths), there has been increasing interest in hypothyroidism as a novel, under-recognized cardiovascular risk factor in this population. Supporting this hypothesis includes a cross-sectional study of 51 peritoneal dialysis patients in whom those with subclinical hypothyroidism had a lower left ventricular ejection fraction vs. those who were euthyroid.¹¹ More recently, in a secondary analysis of 99 hemodialysis patients from the multicenter Anti-Inflammatory and Anti-Oxidative Nutrition in Hypoalbuminemic Dialysis Patients (AIONID) trial, patients with TSH levels in the highest three quartiles had worse endothelial function measured by digital thermal monitoring vs. those in the lowest quartile.⁴⁴ Several studies have also shown that thyroid dysfunction is associated with coronary artery calcification (CAC) in kidney disease patients, with mixed findings. In a study of 94 ESRD patients eligible for living donor transplantation, lower FT3 and FT4 levels as well as lower TSH levels were associated with higher CAC scores.¹¹ In contrast, in a subsequent secondary analysis of 104 patients from AIONID trial, incrementally higher TSH levels were associated with higher CAC burden measured by Agatston score.^{10,44}

Health-related quality of life (HRQOL) and physical function

Hypothyroidism has also been associated with overall reduction in health-related quality of life (HRQOL), which in turn is an important predictor of survival in NDD-CKD^{14,15} and hemodialysis^{13,106} patients. In a prospective cohort of 450 hemodialysis patients who underwent Short Form 36 assessment, higher TSH levels were associated with impaired HRQOL, particularly in the domains related to physical health (i.e., energy/fatigue, physical function, role limitations due to physical health, pain).¹² Future studies are needed to

determine if thyroid hormone supplementation improves the HRQOL of CKD patients with thyroid dysfunction.

Body composition

Thyroid function plays a critical role in the metabolic status of adults, including regulation of thermogenesis, basal metabolic rate, and body weight. Hypothyroidism is known to result in reduced energy expenditure and modest weight gain, and in the general population, recent studies have suggested that higher TSH are associated with increased fat and fat-free or lean (i.e., skeletal muscle) mass. In a nationally representative cohort of US adults, incremental TSH elevations within the euthyroid range were associated with 1) increased fat and fat-free mass ascertained by Bioelectrical Impedance Analysis (BIA)¹⁶ and 2) increased total fat mass, total and truncal fat percentage, as well as lean mass ascertained by Dual-energy X-ray absorptiometry (DEXA) scan.¹⁷ While less is known about the impact of thyroid status on body composition in ESRD patients, more recent data from a secondary analysis of 103 patients from AIONID trial showed higher TSH levels were associated with increased fat mass and bone mineral content.¹⁸ Further studies are needed to determine whether thyroid-related alterations in body composition impact the health and survival of hemodialysis patients, and whether reduction of TSH with treatment influences muscle and bone parameters in this population.

Screening and treatment

Although some of the criteria for thyroid functional test screening in the general population may pertain to CKD patients (i.e., recommended screening in patients with newly diagnosed heart failure by the American College of Cardiology/American Heart Association), existing clinical practice guidelines^{77,107–112} lack screening recommendations specific to the CKD population. Given that hypothyroidism is frequently latent and undiagnosed in CKD patients due to symptom overlap with uremia (i.e., fatigue, cold intolerance, decreased cognition, depression),¹¹³ further research of the prognostic implications of thyroid dysfunction and the magnitude of the benefits and risks of screening and treatment are needed to guide clinical practice.

Thyroid hormone supplementation is fundamental to the treatment of hypothyroidism, and data from the United States Renal Data System have shown that it is one of the most commonly prescribed medications in NDD-CKD and ESRD patients who are Medicare Part D enrollees.^{114,115} While some rigorous observational data¹¹⁶ and clinical trials in the general population have shown that treatment reverses adverse cardiovascular outcomes (i.e., diastolic dysfunction,¹¹⁷ dyslipidemia,¹¹⁸ endothelial dysfunction,¹¹⁹ atherosclerosis¹¹⁸), to date there has been limited study of exogenous thyroid hormone supplementation in CKD patients. In one study of 2715 dialysis patients whose thyroid function and levothyroxine (L-T4) treatment status were ascertained at baseline, those who were euthyroid on treatment (presumed to be “hypothyroid-treated-to-target”) had similar survival compared to those who were spontaneously euthyroid, whereas patients who were hypothyroid irrespective of treatment status had higher mortality risk.⁴ In a more recent study of 227,426 US Veterans with stage 3 CKD in whom thyroid and L-T4 treatment status were ascertained at baseline, a

similar pattern of findings was also observed.⁵ Compared to patients who were spontaneously euthyroid, those who were hypothyroid-treated-to-target had similar to slightly decreased mortality risk, whereas those with untreated hypothyroidism and undertreated hypothyroidism each had higher death risk.

While these observations suggest benefit, given that L-T4 has a narrow toxic-to-therapeutic window, and iatrogenic thyrotoxicosis and/or unwarranted treatment may theoretically lead to complications (i.e., increased protein catabolism, reduced bone mineral density, arrhythmia) rigorous longitudinal studies and randomized controlled trials are needed to provide more definitive information on the safety and effectiveness of exogenous thyroid hormone supplementation in hypothyroid CKD patients.

Conclusion

In summary, CKD patients have a high burden of hypothyroidism, although many cases may remain latent and undiagnosed. While the mechanistic link between thyroid and kidney disease renders further study, growing evidence points to a bi-directional relationship between hypothyroidism and CKD. Given the high prevalence of hypothyroidism in CKD patients, and its associated with worse hard endpoints (i.e., survival, cardiovascular disease), patient-centered outcomes (i.e., HRQOL, physical function), and metabolic status (i.e., body composition parameters) in this population, there is compelling need for further investigation of how to optimally manage thyroid dysfunction in this population.

Acknowledgments

Financial support and sponsorship:

The authors are supported by the research grants from the Uehara Memorial Foundation for Overseas postdoctoral fellowships (YN) and the NIH/NIDDK: R03-DK114642 (CMR), R01-DK122767 (CMR), and R01-DK124138 (CMR).

References:

1. Larsen PR. Thyroid-pituitary interaction: feedback regulation of thyrotropin secretion by thyroid hormones. *The New England journal of medicine*. 1 7 1982;306(1):23–32. [PubMed: 7031472]
2. Bianco AC, Salvatore D, Gereben B, Berry MJ, Larsen PR. Biochemistry, cellular and molecular biology, and physiological roles of the iodothyronine selenodeiodinases. *Endocrine reviews*. 2 2002;23(1):38–89. [PubMed: 11844744]
3. Mariani LH, Berns JS. The renal manifestations of thyroid disease. *Journal of the American Society of Nephrology : JASN*. 1 2012;23(1):22–26. [PubMed: 22021708]
4. Rhee CM, Alexander EK, Bhan I, Brunelli SM. Hypothyroidism and mortality among dialysis patients. *Clinical journal of the American Society of Nephrology : CJASN*. 4 2013;8(4):593–601. [PubMed: 23258793]
5. Rhee CM, Kalantar-Zadeh K, Ravel V, et al. Thyroid Status and Death Risk in US Veterans With Chronic Kidney Disease. *Mayo Clinic proceedings*. 5 2018;93(5):573–585. [PubMed: 29728200]
6. Rhee CM, Kim S, Gillen DL, et al. Association of thyroid functional disease with mortality in a national cohort of incident hemodialysis patients. *The Journal of clinical endocrinology and metabolism*. 4 2015;100(4):1386–1395. [PubMed: 25632971]
7. Rhee CM, Ravel VA, Streja E, et al. Thyroid Functional Disease and Mortality in a National Peritoneal Dialysis Cohort. *The Journal of clinical endocrinology and metabolism*. 11 2016;101(11):4054–4061. [PubMed: 27525529]

8. Rhee CM, You AS, Nguyen DV, et al. Thyroid Status and Mortality in a Prospective Hemodialysis Cohort. *The Journal of clinical endocrinology and metabolism*. 5 1 2017;102(5):1568–1577. [PubMed: 28324018]
9. You AS, Sim JJ, Kovesdy CP, et al. Association of thyroid status prior to transition to end-stage renal disease with early dialysis mortality. *Nephrology, dialysis, transplantation : official publication of the European Dialysis and Transplant Association - European Renal Association*. 12 1 2019;34(12):2095–2104.
10. Rhee C, Budoff M, Novoa A, et al. Thyroid status: a novel coronary artery calcification risk factor in hemodialysis patients. Paper presented at: Abstract submitted to the 2018.
11. Kang EW, Nam JY, Yoo TH, et al. Clinical implications of subclinical hypothyroidism in continuous ambulatory peritoneal dialysis patients. *American journal of nephrology*. 2008;28(6):908–913. [PubMed: 18580053]
12. Rhee CM, Chen Y, You AS, et al. Thyroid Status, Quality of Life, and Mental Health in Patients on Hemodialysis. *Clinical journal of the American Society of Nephrology : CJASN*. 8 7 2017;12(8):1274–1283. [PubMed: 28705886]
13. Kalantar SS, You AS, Norris KC, et al. The Impact of Race and Ethnicity Upon Health-Related Quality of Life and Mortality in Dialysis Patients. *Kidney medicine*. Sep-Oct 2019;1(5):253–262. [PubMed: 32734205]
14. Porter AC, Lash JP, Xie D, et al. Predictors and Outcomes of Health-Related Quality of Life in Adults with CKD. *Clinical journal of the American Society of Nephrology : CJASN*. 7 7 2016;11(7):1154–1162. [PubMed: 27246012]
15. Porter A, Fischer MJ, Wang X, et al. Quality of life and outcomes in African Americans with CKD. *Journal of the American Society of Nephrology : JASN*. 8 2014;25(8):1849–1855. [PubMed: 24700865]
16. Naraskai Y, Brent GA, You AS, et al. Thyroid Status and Body Composition Defined By Bioelectrical Impedance Analysis in a Nationally Representative Cohort of US Adults. Abstract presented at the 2019 American Thyroid Association Meeting.
17. Naraskai Y, Brent GA, You AS, et al. Inter-Relationships Between Thyroid Status, Adiposity, and Lean Mass in a Nationally Representative Cohort of US Adults. 2019 American Thyroid Association Meeting.
18. Narasaki Y, You AS, Bross R, et al. Thyroid Status and Body Composition in a Prospective Hemodialysis Cohort. 12th international conference on cachexia, sarcopenia and muscle wasting.
19. Ruge JB, Bougatsos C, Chou R. U.S. Preventive Services Task Force Evidence Syntheses, formerly Systematic Evidence Reviews. Screening for and Treatment of Thyroid Dysfunction: An Evidence Review for the U.S. Preventive Services Task Force. Rockville (MD): Agency for Healthcare Research and Quality (US); 2014.
20. Biondi B, Cooper DS. The clinical significance of subclinical thyroid dysfunction. *Endocrine reviews*. 2 2008;29(1):76–131. [PubMed: 17991805]
21. Lee SY, Rhee CM, Leung AM, Braverman LE, Brent GA, Pearce EN. A review: Radiographic iodinated contrast media-induced thyroid dysfunction. *The Journal of clinical endocrinology and metabolism*. 2 2015;100(2):376–383. [PubMed: 25375985]
22. Canaris GJ, Manowitz NR, Mayor G, Ridgway EC. The Colorado thyroid disease prevalence study. *Archives of internal medicine*. 2 28 2000;160(4):526–534. [PubMed: 10695693]
23. Hollowell JG, Staehling NW, Flanders WD, et al. Serum TSH, T(4), and thyroid antibodies in the United States population (1988 to 1994): National Health and Nutrition Examination Survey (NHANES III). *The Journal of clinical endocrinology and metabolism*. 2 2002;87(2):489–499. [PubMed: 11836274]
24. Ross DS. SERUM THYROID-STIMULATING HORMONE MEASUREMENT FOR ASSESSMENT OF THYROID FUNCTION AND DISEASE. *Endocrinology and Metabolism Clinics of North America*. 2001/06/01/ 2001;30(2):245–264. [PubMed: 11444162]
25. Braverman LE, Cooper D. Werner & Ingbar's the thyroid: a fundamental and clinical text: Lippincott Williams & Wilkins; 2012.

26. Lo JC, Chertow GM, Go AS, Hsu CY. Increased prevalence of subclinical and clinical hypothyroidism in persons with chronic kidney disease. *Kidney international*. 3 2005;67(3):1047–1052. [PubMed: 15698444]
27. Bando Y, Ushioji Y, Okafuji K, Toya D, Tanaka N, Miura S. Non-autoimmune primary hypothyroidism in diabetic and non-diabetic chronic renal dysfunction. *Experimental and clinical endocrinology & diabetes : official journal, German Society of Endocrinology [and] German Diabetes Association* 11 2002;110(8):408–415.
28. Kim EO, Lee IS, Choi YA, et al. Unresolved subclinical hypothyroidism is independently associated with progression of chronic kidney disease. *International journal of medical sciences*. 2014;11(1):52–59. [PubMed: 24396286]
29. Carrero JJ, Qureshi AR, Axelsson J, et al. Clinical and biochemical implications of low thyroid hormone levels (total and free forms) in euthyroid patients with chronic kidney disease. *Journal of internal medicine*. 12 2007;262(6):690–701. [PubMed: 17908160]
30. Chonchol M, Lippi G, Salvagno G, Zoppini G, Muggeo M, Targher G. Prevalence of subclinical hypothyroidism in patients with chronic kidney disease. *Clinical journal of the American Society of Nephrology : CJASN*. 2008;3(5):1296–1300. [PubMed: 18550654]
31. Targher G, Chonchol M, Zoppini G, et al. Prevalence of thyroid autoimmunity and subclinical hypothyroidism in persons with chronic kidney disease not requiring chronic dialysis. *Clinical chemistry and laboratory medicine*. 2009;47(11):1367–1371. [PubMed: 19769543]
32. Sanai T, Okamura K, Rikitake S, et al. The high prevalence of reversible subclinical hypothyroidism with elevated serum thyroglobulin levels in chronic kidney disease patients. *Clinical nephrology*. 5 2017;87 (2017)(5):237–244. [PubMed: 28291505]
33. Lin CC, Chen TW, Ng YY, Chou YH, Yang WC. Thyroid dysfunction and nodular goiter in hemodialysis and peritoneal dialysis patients. *Peritoneal dialysis international : journal of the International Society for Peritoneal Dialysis*. Sep-Oct 1998;18(5):516–521. [PubMed: 9848631]
34. Kutlay S, Atli T, Koseogullari O, Nergizoglu G, Duman N, Gullu S. Thyroid disorders in hemodialysis patients in an iodine-deficient community. *Artificial organs*. 4 2005;29(4):329–332. [PubMed: 15787628]
35. Shantha GP, Kumar AA, Bhise V, Khanna R, Sivagnanam K, Subramanian KK. Prevalence of Subclinical Hypothyroidism in Patients with End-Stage Renal Disease and the Role of Serum Albumin: A Cross-Sectional Study from South India. *Cardiorenal medicine*. 2011;1(4):255–260. [PubMed: 22096457]
36. Ng YY, Wu SC, Lin HD, et al. Prevalence of clinical and subclinical thyroid disease in a peritoneal dialysis population. *Peritoneal dialysis international : journal of the International Society for Peritoneal Dialysis*. Jan-Feb 2012;32(1):86–93. [PubMed: 21532003]
37. Meuwese CL, Dekker FW, Lindholm B, et al. Baseline levels and trimestral variation of triiodothyronine and thyroxine and their association with mortality in maintenance hemodialysis patients. *Clinical journal of the American Society of Nephrology : CJASN*. 1 2012;7(1):131–138. [PubMed: 22246282]
38. Kaptein EM. Thyroid hormone metabolism and thyroid diseases in chronic renal failure. *Endocrine reviews*. 2 1996;17(1):45–63. [PubMed: 8641223]
39. Ramirez G, O'Neill W Jr., Jubiz W, Bloomer HA. Thyroid dysfunction in uremia: evidence for thyroid and hypophyseal abnormalities. *Annals of internal medicine*. 6 1976;84(6):672–676. [PubMed: 937878]
40. You AS, Kalantar-Zadeh K, Sim JJ, Brent GA, Dunning S, Kovesdy CP, Nguyen DV, Rhee CM. The relationship between thyroid status and kidney function among 24 million patients in the national OptumLabs Data Warehouse. Abstract presented at the 2019 American Society of Nephrology Kidney Week Meeting, Washington DC.
41. Chuang MH, Liao KM, Hung YM, Wang PY, Chou YC, Chou P. Abnormal Thyroid-Stimulating Hormone and Chronic Kidney Disease in Elderly Adults in Taipei City. *Journal of the American Geriatrics Society*. 6 2016;64(6):1267–1273. [PubMed: 27321605]
42. Zhang Y, Chang Y, Ryu S, et al. Thyroid hormone levels and incident chronic kidney disease in euthyroid individuals: the Kangbuk Samsung Health Study. *International journal of epidemiology*. 10 2014;43(5):1624–1632. [PubMed: 25011453]

43. Schultheiss UT, Daya N, Grams ME, et al. Thyroid function, reduced kidney function and incident chronic kidney disease in a community-based population: the Atherosclerosis Risk in Communities study. *Nephrology, dialysis, transplantation : official publication of the European Dialysis and Transplant Association - European Renal Association*. 11 1 2017;32(11):1874–1881.
44. Rhee CM. Thyroid disease in end-stage renal disease. *Current opinion in nephrology and hypertension*. 11 2019;28(6):621–630. [PubMed: 31483325]
45. Rhee CM. The interaction between thyroid and kidney disease: an overview of the evidence. *Current opinion in endocrinology, diabetes, and obesity*. 10 2016;23(5):407–415.
46. Canavan JP, Holt J, Easton J, Smith K, Goldspink DF. Thyroid-induced changes in the growth of the liver, kidney, and diaphragm of neonatal rats. *Journal of cellular physiology*. 10 1994;161(1):49–54. [PubMed: 7929607]
47. Slotkin TA, Seidler FJ, Kavlock RJ, Bartolome JV. Thyroid hormone differentially regulates cellular development in neonatal rat heart and kidney. *Teratology*. 3 1992;45(3):303–312. [PubMed: 1631783]
48. Bentley AG, Madsen KM, Davis RG, Tisher CC. Response of the medullary thick ascending limb to hypothyroidism in the rat. *The American journal of pathology*. 8 1985;120(2):215–221. [PubMed: 4025510]
49. Salomon MI, Di Scala V, Grishman E, Brenner J, Churg J. Renal lesions in hypothyroidism: a study based on kidney biopsies. *Metabolism: clinical and experimental*. 9 1967;16(9):846–852. [PubMed: 6072218]
50. Bradley SE, Coelho JB, Sealey JE, Edwards KD, Stéphan F. Changes in glomerulotubular dimensions, single nephron glomerular filtration rates and the renin-angiotensin system in hypothyroid rats. *Life sciences*. 2 15–22 1982;30(7–8):633–639. [PubMed: 7040895]
51. Rodríguez-Gómez I, Banegas I, Wangenstein R, et al. Influence of thyroid state on cardiac and renal capillary density and glomerular morphology in rats. *The Journal of endocrinology*. 1 2013;216(1):43–51. [PubMed: 23048210]
52. Wheatley T, Edwards OM. Mild hypothyroidism and oedema: evidence for increased capillary permeability to protein. *Clinical endocrinology*. 6 1983;18(6):627–635. [PubMed: 6684003]
53. Kumar J, Gordillo R, Kaskel FJ, Druschel CM, Woroniecki RP. Increased prevalence of renal and urinary tract anomalies in children with congenital hypothyroidism. *The Journal of pediatrics*. 2 2009;154(2):263–266. [PubMed: 18823909]
54. Klein I, Ojamaa K. Thyroid hormone and the cardiovascular system. *The New England journal of medicine*. 2 15 2001;344(7):501–509. [PubMed: 11172193]
55. Basu G, Mohapatra A. Interactions between thyroid disorders and kidney disease. *Indian journal of endocrinology and metabolism*. 3 2012;16(2):204–213. [PubMed: 22470856]
56. Ichihara A, Kobori H, Miyashita Y, Hayashi M, Saruta T. Differential effects of thyroid hormone on renin secretion, content, and mRNA in juxtaglomerular cells. *The American journal of physiology*. 2 1998;274(2):E224–231. [PubMed: 9486151]
57. Vargas F, Rodríguez-Gómez I, Vargas-Tendero P, Jimenez E, Montiel M. The renin-angiotensin system in thyroid disorders and its role in cardiovascular and renal manifestations. *The Journal of endocrinology*. 4 2012;213(1):25–36. [PubMed: 22043064]
58. Schmitt R, Klussmann E, Kahl T, Ellison DH, Bachmann S. Renal expression of sodium transporters and aquaporin-2 in hypothyroid rats. *American journal of physiology. Renal physiology*. 5 2003;284(5):F1097–1104. [PubMed: 12569081]
59. Euzet S, Lelièvre-Pégorier M, Merlet-Bénichou C. Maturation of rat renal phosphate transport: effect of triiodothyronine. *The Journal of physiology*. 10 15 1995;488 (Pt 2)(Pt 2):449–457. [PubMed: 8568683]
60. Baum M, Dwarakanath V, Alpern RJ, Moe OW. Effects of thyroid hormone on the neonatal renal cortical Na⁺/H⁺ antiporter. *Kidney international*. 5 1998;53(5):1254–1258. [PubMed: 9573540]
61. Nakhoul F, Thompson CB, McDonough AA. Developmental change in Na,K-ATPase alpha1 and beta1 expression in normal and hypothyroid rat renal cortex. *American journal of nephrology*. May-Jun 2000;20(3):225–231. [PubMed: 10878407]

62. Garg LC, Tisher CC. Effects of thyroid hormone on Na-K-adenosine triphosphatase activity along the rat nephron. *The Journal of laboratory and clinical medicine*. 11 1985;106(5):568–572. [PubMed: 2997354]
63. Schmid C, Brändle M, Zwimpfer C, Zapf J, Wiesli P. Effect of thyroxine replacement on creatinine, insulin-like growth factor 1, acid-labile subunit, and vascular endothelial growth factor. *Clinical chemistry*. 1 2004;50(1):228–231. [PubMed: 14709659]
64. Bradley SE, Stéphan F, Coelho JB, Réville P. The thyroid and the kidney. *Kidney international*. 11 1974;6(5):346–365. [PubMed: 4431166]
65. Falk SA, Buric V, Hammond WS, Conger JD. Serial glomerular and tubular dynamics in thyroidectomized rats with remnant kidneys. *American journal of kidney diseases : the official journal of the National Kidney Foundation*. 2 1991;17(2):218–227. [PubMed: 1992665]
66. Karanikas G, Schütz M, Szabo M, et al. Isotopic renal function studies in severe hypothyroidism and after thyroid hormone replacement therapy. *American journal of nephrology*. Jan-Feb 2004;24(1):41–45. [PubMed: 14685006]
67. Kreisman SH, Hennessey JV. Consistent reversible elevations of serum creatinine levels in severe hypothyroidism. *Archives of internal medicine*. 1 11 1999;159(1):79–82. [PubMed: 9892334]
68. Villabona C, Sahun M, Roca M, et al. Blood volumes and renal function in overt and subclinical primary hypothyroidism. *The American journal of the medical sciences*. 10 1999;318(4):277–280. [PubMed: 10522555]
69. Toda A, Hara S, Kato M, Tsuji H, Arase Y. Association of Thyrotropin Concentration with Chronic Kidney Disease in a Japanese General Population Cohort. *Nephron*. 2019;142(2):91–97. [PubMed: 30799424]
70. Shin DH, Lee MJ, Kim SJ, et al. Preservation of renal function by thyroid hormone replacement therapy in chronic kidney disease patients with subclinical hypothyroidism. *The Journal of clinical endocrinology and metabolism*. 8 2012;97(8):2732–2740. [PubMed: 22723335]
71. Brungger M, Hulter HN, Krapf R. Effect of chronic metabolic acidosis on thyroid hormone homeostasis in humans. *Am J Physiol*. 5 1997;272(5 Pt 2):F648–653. [PubMed: 9176376]
72. Wiederkehr MR, Kalogiros J, Krapf R. Correction of metabolic acidosis improves thyroid and growth hormone axes in haemodialysis patients. *Nephrology, dialysis, transplantation : official publication of the European Dialysis and Transplant Association - European Renal Association*. 5 2004;19(5):1190–1197.
73. Feinstein EI, Kaptein EM, Nicoloff JT, Massry SG. Thyroid function in patients with nephrotic syndrome and normal renal function. *American journal of nephrology*. 1982;2(2):70–76. [PubMed: 7180903]
74. Robey C, Shreedhar K, Batuman V. Effects of chronic peritoneal dialysis on thyroid function tests. *American journal of kidney diseases : the official journal of the National Kidney Foundation*. 2 1989;13(2):99–103. [PubMed: 2916576]
75. Meuwese CL, Dekkers OM, Stenvinkel P, Dekker FW, Carrero JJ. Nonthyroidal illness and the cardiorenal syndrome. *Nature reviews. Nephrology* 10 2013;9(10):599–609. [PubMed: 23999398]
76. Langton JE, Brent GA. Nonthyroidal illness syndrome: evaluation of thyroid function in sick patients. *Endocrinol Metab Clin North Am*. 3 2002;31(1):159–172. [PubMed: 12055987]
77. Garber JR, Cobin RH, Gharib H, et al. Clinical practice guidelines for hypothyroidism in adults: cosponsored by the American Association of Clinical Endocrinologists and the American Thyroid Association. *Thyroid : official journal of the American Thyroid Association*. 12 2012;22(12):1200–1235. [PubMed: 22954017]
78. Ladenson PW. Diagnosis of Hypothyroidism. In: Braverman LE, Cooper DS, editors. *Werner and Ingbar's The Thyroid*. 10th. Philadelphia: Lippincott Williams and Wilkins; 2013. pp. 6064–611.
79. Wiersinga WM, Van den Berghe G. Nonthyroidal Illness Syndrome. In: Braverman LE, Cooper DS, editors. *Werner and Ingbar's The Thyroid*. 10th. Philadelphia: Lippincott Williams and Wilkins; 2013. pp. 2034–216.
80. Carrero JJ, Stenvinkel P, Lindholm B. Endocrine Aspects of Chronic Kidney Disease. In: Taal MW, Chertow GM, Marsden PA, Skorecki K, Yu AS, Brenner BM, editors. *Taal: Brenner and Rector's The Kidney*. 9th. Philadelphia: Elsevier Saunders; 2012. pp. 21224–2137.

81. Song SH, Kwak IS, Lee DW, Kang YH, Seong EY, Park JS. The prevalence of low triiodothyronine according to the stage of chronic kidney disease in subjects with a normal thyroid-stimulating hormone. *Nephrology, dialysis, transplantation : official publication of the European Dialysis and Transplant Association - European Renal Association*. 5 2009;24(5):1534–1538.
82. Kaptein EM, Quion-Verde H, Chooljian CJ, et al. The thyroid in end-stage renal disease. *Medicine*. 5 1988;67(3):187–197. [PubMed: 3259281]
83. Medri G, Carella C, Padmanabhan V, et al. Pituitary glycoprotein hormones in chronic renal failure: evidence for an uncontrolled alpha-subunit release. *Journal of endocrinological investigation*. 3 1993;16(3):169–174. [PubMed: 7685785]
84. Wartofsky L, Burman KD. Alterations in thyroid function in patients with systemic illness: the “euthyroid sick syndrome”. *Endocrine reviews*. Spring 1982;3(2):164–217. [PubMed: 6806085]
85. Rhee CM. Low-T3 Syndrome in Peritoneal Dialysis: Metabolic Adaptation, Marker of Illness, or Mortality Mediator? *Clinical journal of the American Society of Nephrology : CJASN*. 6 5 2015;10(6):917–919. [PubMed: 25979973]
86. Chopra IJ, Sakane S, Teco GN. A study of the serum concentration of tumor necrosis factor-alpha in thyroidal and nonthyroidal illnesses. *The Journal of clinical endocrinology and metabolism*. 5 1991;72(5):1113–1116. [PubMed: 2022711]
87. Pereira BJ, Shapiro L, King AJ, Falagas ME, Strom JA, Dinarello CA. Plasma levels of IL-1 beta, TNF alpha and their specific inhibitors in undialyzed chronic renal failure, CAPD and hemodialysis patients. *Kidney international*. 3 1994;45(3):890–896. [PubMed: 8196293]
88. Soldin OP, Braverman L, Cooper D. Measuring serum thyroid-stimulating hormone, thyroid hormones, thyroid-directed antibodies, and transport proteins. *Werner and Ingbar’s The Thyroid*. 2013:279–297.
89. Soldin OP, Soldin SJ. Thyroid hormone testing by tandem mass spectrometry. *Clinical biochemistry*. 1 2011;44(1):89–94. [PubMed: 20691174]
90. Jonklaas J, Kahric-Janjic N, Soldin OP, Soldin SJ. Correlations of free thyroid hormones measured by tandem mass spectrometry and immunoassay with thyroid-stimulating hormone across 4 patient populations. *Clinical chemistry*. 7 2009;55(7):1380–1388. [PubMed: 19460839]
91. Jonklaas J, Soldin SJ. Tandem mass spectrometry as a novel tool for elucidating pituitary-thyroid relationships. *Thyroid : official journal of the American Thyroid Association*. 12 2008;18(12):1303–1311. [PubMed: 19067639]
92. van Deventer HE, Mendu DR, Remaley AT, Soldin SJ. Inverse log-linear relationship between thyroid-stimulating hormone and free thyroxine measured by direct analog immunoassay and tandem mass spectrometry. *Clinical chemistry*. 1 2011;57(1):122–127. [PubMed: 21097676]
93. Lartey LJ, Werneck-de-Castro JP, I OS, Unterman TG, Bianco AC. Coupling between Nutrient Availability and Thyroid Hormone Activation. *The Journal of biological chemistry*. 12 18 2015;290(51):30551–30561. [PubMed: 26499800]
94. Whitehead DC. The distribution and transformations of iodine in the environment. *Environment International* 1984/01/01/ 1984;10(4):321–339.
95. Chung JH. Low iodine diet for preparation for radioactive iodine therapy in differentiated thyroid carcinoma in Korea. *Endocrinology and metabolism (Seoul, Korea)*. 9 2013;28(3):157–163.
96. Mabeau S, Fleurence J. Seaweed in food products: biochemical and nutritional aspects. *Trends in Food Science & Technology*. 1993/04/01/ 1993;4(4):103–107.
97. Variability of Iodine Content in Common Commercially Available Edible Seaweeds. *Thyroid : official journal of the American Thyroid Association*. 2004;14(10):836–841. [PubMed: 15588380]
98. Chung S, Chan A, Xiao Y, Lin V, Ho YY. Iodine content in commonly consumed food in Hong Kong and its changes due to cooking. *Food additives & contaminants. Part B, Surveillance*. 2013;6(1):24–29. [PubMed: 24786621]
99. Castro SI, Berthiaume R, Robichaud A, Lacasse P. Effects of iodine intake and teat-dipping practices on milk iodine concentrations in dairy cows. *Journal of dairy science*. 1 2012;95(1):213–220. [PubMed: 22192200]
100. Flachowsky G, Franke K, Meyer U, Leiterer M, Schöne F. Influencing factors on iodine content of cow milk. *European journal of nutrition*. 2014;53(2):351–365. [PubMed: 24185833]

101. Röttger AS, Halle I, Wagner H, Breves G, Dänicke S, Flachowsky G. The effects of iodine level and source on iodine carry-over in eggs and body tissues of laying hens. *Archives of animal nutrition*. 10 2012;66(5):385–401. [PubMed: 22962946]
102. Brough R, Jones C. Iatrogenic iodine as a cause of hypothyroidism in infants with end-stage renal failure. *Pediatr Nephrol*. 3 2006;21(3):400–402. [PubMed: 16385388]
103. Moisey RS, McPherson S, Wright M, Orme SM. Thyroiditis and iodide mumps following an angioplasty. *Nephrology, dialysis, transplantation: official publication of the European Dialysis and Transplant Association – European Renal Association*. 2007;22:12504–1252.
104. Benvenega S, Feldt-Rasmussen U, Bonofiglio D, Asamoah E. Nutraceutical Supplements in the Thyroid Setting: Health Benefits beyond Basic Nutrition. *Nutrients*. 9 13 2019;11(9).
105. Omrani HR, Rahimi M, Nikseresht K. The effect of selenium supplementation on acute phase reactants and thyroid function tests in hemodialysis patients. *Nephro-urology monthly*. 3 2015;7(2):e24781. [PubMed: 25883912]
106. Kalantar-Zadeh K, Kopple JD, Block G, Humphreys MH. Association among SF36 quality of life measures and nutrition, hospitalization, and mortality in hemodialysis. *Journal of the American Society of Nephrology : JASN*. 12 2001;12(12):2797–2806. [PubMed: 11729250]
107. 2001 USPHS/IDSA guidelines for the prevention of opportunistic infections in persons infected with human immunodeficiency virus. *Infectious diseases in obstetrics and gynecology*. 2002;10(1):3–64. [PubMed: 12090361]
108. Institute of Medicine Committee on Medicare Coverage of Routine Thyroid S. In: Stone MB, Wallace RB, eds. *Medicare Coverage of Routine Screening for Thyroid Dysfunction*. Washington (DC): National Academies Press (US) Copyright 2003 by the National Academy of Sciences. All rights reserved.; 2003.
109. Clinical guideline, part 1. Screening for thyroid disease. American College of Physicians. *Annals of internal medicine*. 7 15 1998;129(2):141–143. [PubMed: 9669976]
110. Hunt SA, Baker DW, Chin MH, et al. ACC/AHA guidelines for the evaluation and management of chronic heart failure in the adult: executive summary. A report of the American College of Cardiology/American Heart Association Task Force on Practice Guidelines (Committee to revise the 1995 Guidelines for the Evaluation and Management of Heart Failure). *Journal of the American College of Cardiology*. 12 2001;38(7):2101–2113. [PubMed: 11738322]
111. LeFevre ML. Screening for thyroid dysfunction: U.S. Preventive Services Task Force recommendation statement. *Annals of internal medicine*. 5 5 2015;162(9):641–650. [PubMed: 25798805]
112. Ruge JB, Bougatsos C, Chou R. Screening and treatment of thyroid dysfunction: an evidence review for the U.S. Preventive Services Task Force. *Annals of internal medicine*. 1 6 2015;162(1):35–45. [PubMed: 25347444]
113. Stan MN, Drake MT. Failing Kidneys and Thyroid Dysfunction-An Undesirable Synergy. *Mayo Clinic proceedings*. 5 2018;93(5):555–557. [PubMed: 29728198]
114. Saran R, Robinson B, Abbott KC, et al. US Renal Data System 2018 Annual Data Report: Epidemiology of Kidney Disease in the United States. *American journal of kidney diseases : the official journal of the National Kidney Foundation*. 3 2019;73(3 Suppl 1):A7–a8. [PubMed: 30798791]
115. Collins AJ, Foley RN, Herzog C, et al. US Renal Data System 2012 Annual Data Report. *American journal of kidney diseases : the official journal of the National Kidney Foundation*. 1 2013;61(1 Suppl 1):A7, e1–476. [PubMed: 23253259]
116. Razvi S, Weaver JU, Butler TJ, Pearce SH. Levothyroxine treatment of subclinical hypothyroidism, fatal and nonfatal cardiovascular events, and mortality. *Archives of internal medicine*. 5 28 2012;172(10):811–817. [PubMed: 22529180]
117. Biondi B, Fazio S, Palmieri EA, et al. Left ventricular diastolic dysfunction in patients with subclinical hypothyroidism. *The Journal of clinical endocrinology and metabolism*. 6 1999;84(6):2064–2067. [PubMed: 10372711]
118. Monzani F, Caraccio N, Kozakowa M, et al. Effect of levothyroxine replacement on lipid profile and intima-media thickness in subclinical hypothyroidism: a double-blind, placebo- controlled

study. *The Journal of clinical endocrinology and metabolism*. 5 2004;89(5):2099–2106. [PubMed: 15126526]

119. Owen PJ, Rajiv C, Vinereanu D, Mathew T, Fraser AG, Lazarus JH. Subclinical hypothyroidism, arterial stiffness, and myocardial reserve. *The Journal of clinical endocrinology and metabolism*. 6 2006;91(6):2126–2132. [PubMed: 16537677]
120. Rhee CM, Kalantar-Zadeh K, Streja E, et al. The relationship between thyroid function and estimated glomerular filtration rate in patients with chronic kidney disease. *Nephrology, dialysis, transplantation : official publication of the European Dialysis and Transplant Association - European Renal Association*. 2 2015;30(2):282–287.

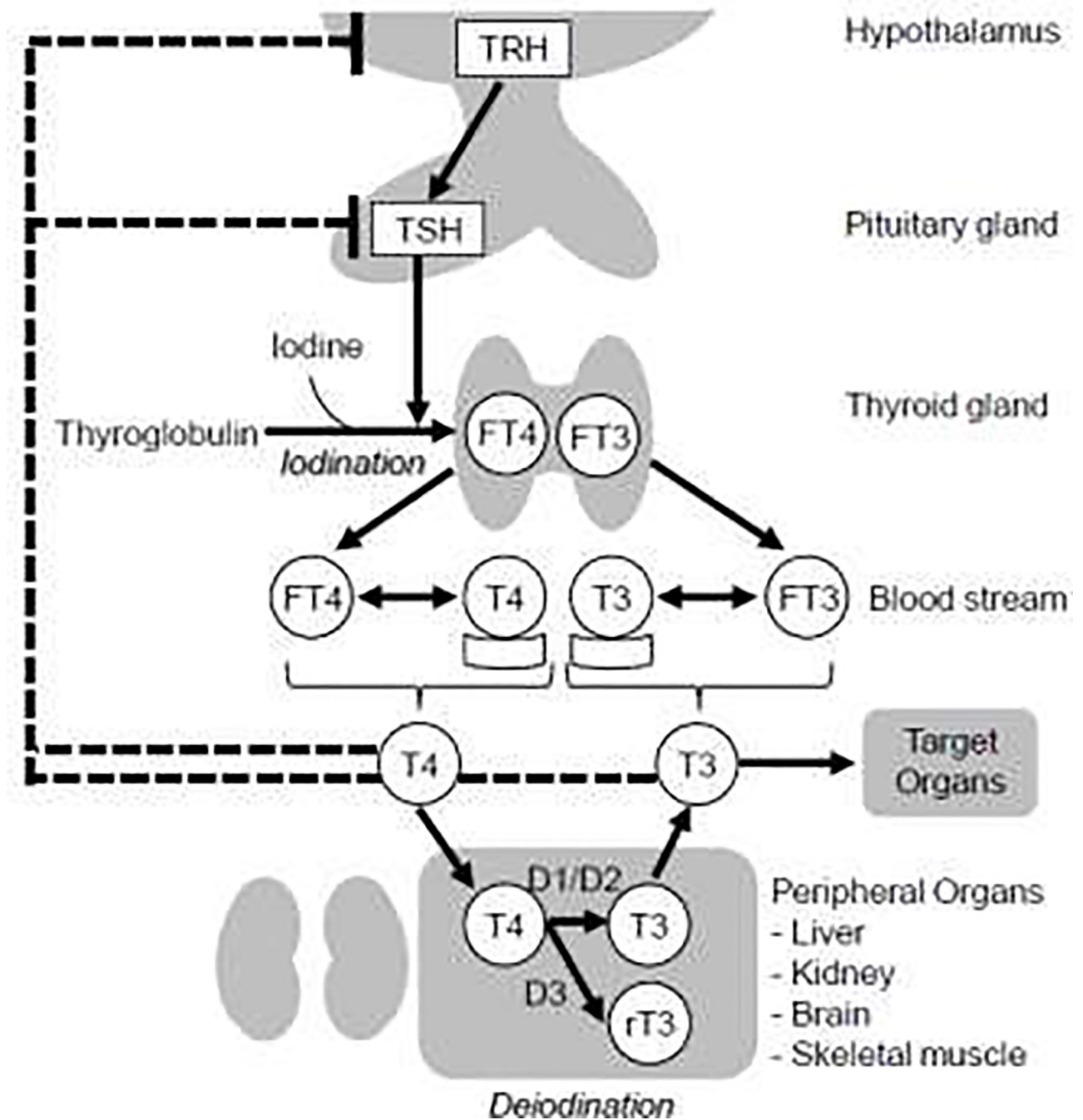


Figure 1. Regulation of thyroid hormone synthesis by the hypothalamus-pituitary-thyroid axis. Thyroid hormone synthesis is tightly regulated by the hypothalamus-pituitary-thyroid axis. Thyrotropin-releasing hormone (TRH) from the hypothalamus stimulates the secretion of thyroid stimulating hormone (TSH) from the anterior pituitary gland. TSH in turn stimulates the production of thyroxine (T4) and triiodothyronine (T3). In peripheral organs including kidney, a large proportion T3 is produced through T4-to-T3 conversion by type 1 5'-deiodinase (D1) and type 2 5'-deiodinase (D2) as a metabolically inactive form of thyroid hormone; some parts of T4 are converted to reverse T3 (rT3) by the type 3 5'-deiodinase

enzyme (D3) as a metabolically inactive form of thyroid hormone. More than 99% of T4 and T3 molecules are tightly bound to the carrier proteins (e.g., thyroid binding globulin [TBG], transthyretin, albumin) and only a very small percentage circulates as free hormone. These free hormones act on target tissues by binding onto thyroid receptors in the nuclei of target cells. In addition, they provide negative feedback to both the hypothalamus and the pituitary gland, closing the tightly regulated homeostatic thyroid hormone synthesis loop. *Abbrev.: TRH, thyrotropin releasing hormone; TSH, thyrotropin; T4, thyroxine; T3, triiodothyronine; FT4, free T4; FT3, free T3; rT3, reverse T3; D1, type 1 5'-deiodinase; D2, type 2 5'-deiodinase; D3, type 3 5'-deiodinase.*

Effects of Hypothyroidism on Kidney Structure and Function

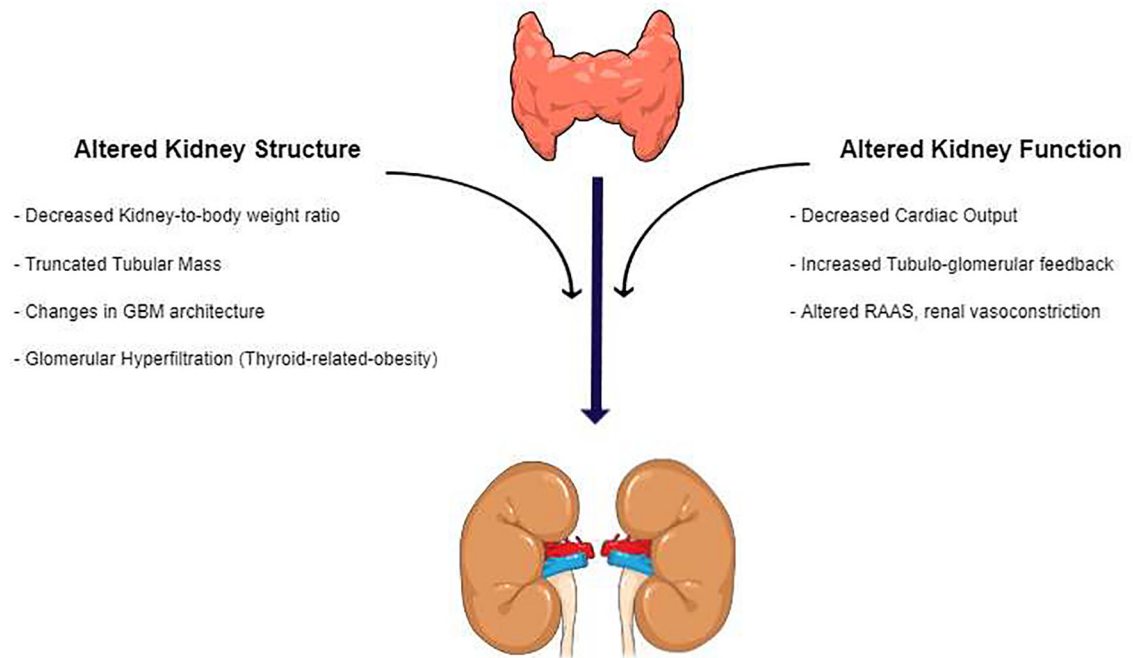


Figure 2. Effects of hypothyroidism on kidney structure and function.

Abbrev.: GBM, glomerular basement membrane; RAAS, renin angiotensin aldosterone system.

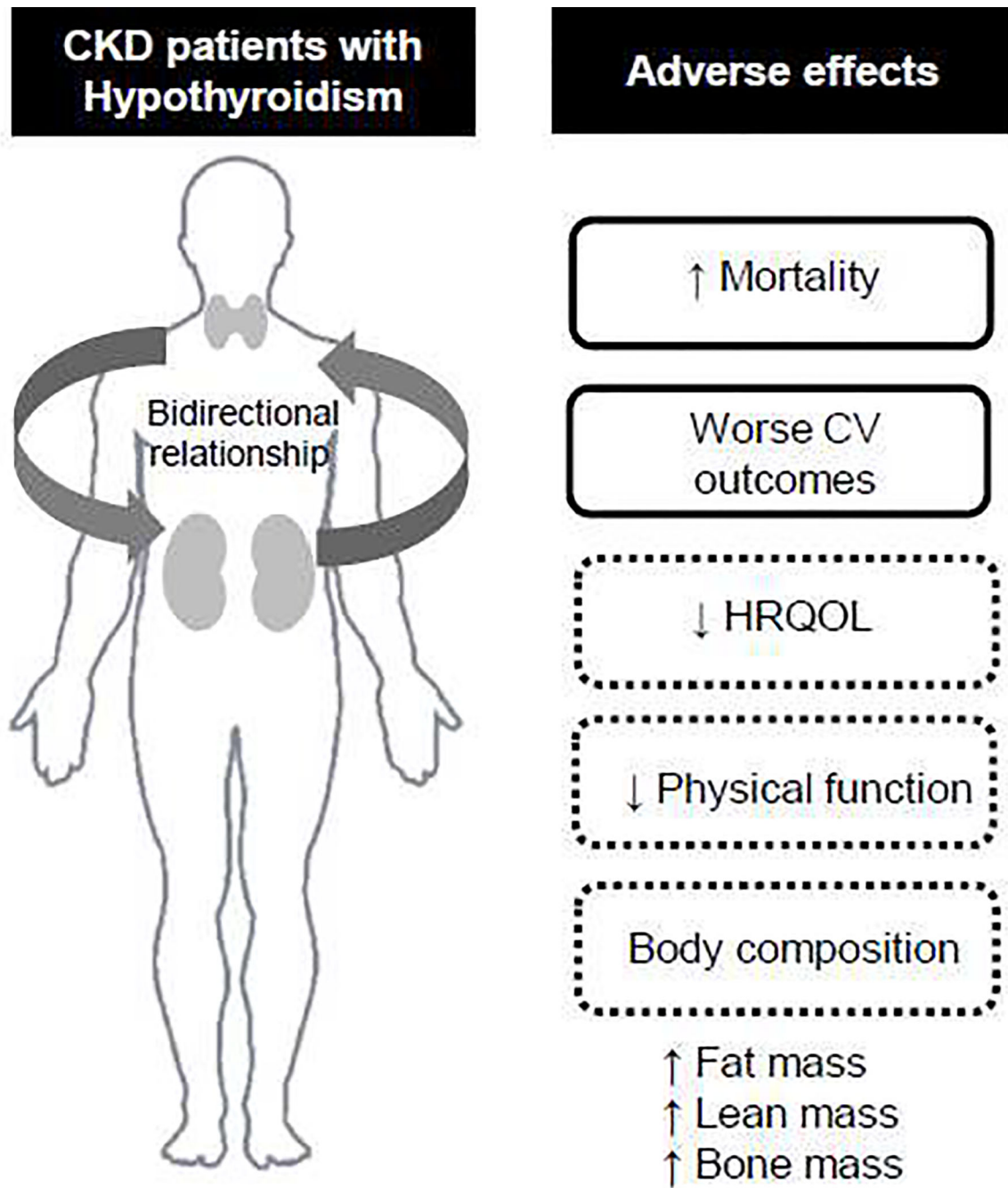


Figure 3. Adverse sequelae of hypothyroidism on clinical outcomes in chronic kidney disease (CKD) patients.

Abbrev.: CV, cardiovascular; HRQOL, health related quality of life; ↑, increased; ↓, decreased.

Table 1.

Prevalence of hypothyroidism in non-dialysis dependent chronic kidney disease (NDD-CKD), hemodialysis (HD), and peritoneal dialysis (PD) patients.

Study (Year)	Cohort (N)	Reference TSH level	Prevalence of hypothyroidism according to CKD stage (%)							
			Non-dialysis dependent CKD					Dialysis		
			1	2	3	4	5	HD	PD	
			>90	60–89	30–59	15–29	<15			
eGFR										
1. NDD-CKD cohorts										
(1) TSH elevation										
Bando et al. (2002) ²⁷	DM and non-DM (63)	TSH > 10 mIU/L + Normal or low T4	-	-	24.0	-	-	-	-	
Lo et al. (2005) ²⁶	NHANES III (14,623)	TSH > 4.5 mIU/L, OR treatment with thyroid hormone	5.4	10.9	21.7	23.0	-	-	-	
Kim et al. (2014) ²⁸	Stage 2–4 CKD (168)	TSH > 4.2 mIU/L + Normal T4	-	14.3	23.5	30.6	-	-	-	
Rhee et al. (2015) ¹²⁰	US Veterans (461,607)	TSH > 5.0 mIU/L OR receipt of thyroid hormone supplementation	-	-	19.1	25.3	26.0	-	-	
(2) Subclinical hypothyroidism										
Carrero et al. (2007) ²⁹	Stage 5 CKD (210)	TSH > 4.5 mIU/L + T4 < 4.5 µg/dl	-	-	-	-	8.1	-	-	
Chonchol et al. (2008) ³⁰	Ambulatory CKD patients (3,089)	TSH > 4.5 mIU/L + Normal FT4	7.0	9.7	17.9	-	-	-	-	
Targher et al. (2009) ³¹	Ambulatory CKD patients (915)	TSH > 4 mIU/L + Normal FT4	7.7	11.7	26.4	-	-	-	-	
Sanai et al. (2017) ³²	(37)	TSH > 4.83 mIU/L	9.1	-	20.0	-	56.3	-	-	
2. End-stage kidney disease cohorts										
(1) TSH elevation										
Lin et al. (1998) ³³	HD/PD (221)	TSH > 3.1 mIU/L	-	-	-	-	-	14.9	-	
Kutlay et al. (2005) ³⁴	HD (87)	TSH > 5.5 mIU/L	-	-	-	-	-	23.1	-	
Rhee et al. (2013) ⁴	HD/PD (2,715)	TSH > assay ULN	-	-	-	-	-	12.9	-	
Rhee et al. (2015) ⁶	National incident HD from LDO (8,840)	TSH > 5.0 mIU/L	-	-	-	-	-	21.8	-	
Rhee et al. (2016) ⁷	National PD from LDO (1,484)	TSH > 5.0 mIU/L	-	-	-	-	-	-	18.0	
Rhee et al. (2017) ⁸	Prospective HD (541)	TSH > 5.0 mIU/L	-	-	-	-	-	10.5	-	
(2) Subclinical hypothyroidism										
Shantha et al. (2011) ³⁵	HD (137)	TSH 4.5–10 mIU/L + Normal FT4	-	-	-	-	-	24.8	-	
Ng et al. (2012) ³⁶	PD (122)	TSH > 4 mIU/L + Normal FT4	-	-	-	-	-	-	15.6	
Meuwese et al. (2012) ³⁷	HD (218)	Diagnostic criteria not available	-	-	-	-	-	1.8	-	

Study (Year)	Cohort (N)	Reference TSH level	Prevalence of hypothyroidism according to CKD stage (%)							
			Non-dialysis dependent CKD					Dialysis		
			1	2	3	4	5	HD	PD	
Rhee et al. (2013) ⁴	HD/PD (2,715)	TSH: assay ULN to 10 mIU/L	-	-	-	-	-	-	8.9	
Rhee et al. (2015) ⁶	National incident HD from LDO (8,840)	TSH >5.0–10.0 mIU/L	-	-	-	-	-	-	8.9	-
Rhee et al. (2016) ⁷	National PD from LDO (1,484)	TSH >5.0–10.0 mIU/L	-	-	-	-	-	-	-	11.7
(3) Overt hypothyroidism										
Kaptein (1996) ³⁸	HD (306)	(1)TSH > 20 mIU/L, or (2) TSH 10–20 mIU/L + exaggerated TRH response + Low TT4 or FT4 index	-	-	-	-	-	-	2.6	-
Lin et al. (1998) ³³	HD/PD (221)	TSH > 20 mIU/L + Low TT4 or FT4	-	-	-	-	-	-	8.9	
Kutlay et al. (2005) ³⁴	HD (87)	TSH > 5.5 mIU/L + Low FT4	-	-	-	-	-	-	3.4	-
Meuwese et al. (2012) ³⁷	HD (218)	Diagnostic criteria not available	-	-	-	-	-	-	5.0	-
Rhee et al. (2013) ⁴	HD/PD (2,715)	TSH > 10 mIU/L	-	-	-	-	-	-	4.3	
Rhee et al. (2015) ⁶	National incident HD from LDO (8,840)	TSH > 10 mIU/L	-	-	-	-	-	-	8.9	-
Rhee et al. (2016) ⁷	National PD from LDO (1,484)	TSH > 10 mIU/L	-	-	-	-	-	-	-	6.5

Abbrev.: DM, diabetes; eGFR, estimated glomerular filtration rate; HD, hemodialysis; LDO, large dialysis organization; NHANES III, Third National Health and Nutrition Examination Survey; PD, peritoneal dialysis.