

UC Riverside

UC Riverside Previously Published Works

Title

A New Life-Span Approach to Conscientiousness and Health: Combining the Pieces of the Causal Puzzle

Permalink

<https://escholarship.org/uc/item/5vc5r0kk>

Journal

Developmental Psychology, 50(5)

ISSN

0012-1649

Authors

Friedman, Howard S
Kern, Margaret L
Hampson, Sarah E
[et al.](#)

Publication Date

2014-05-01

DOI

10.1037/a0030373

Peer reviewed

A New Life-Span Approach to Conscientiousness and Health: Combining the Pieces of the Causal Puzzle

Howard S. Friedman
University of California, Riverside

Margaret L. Kern
University of Pennsylvania

Sarah E. Hampson
Oregon Research Institute, Eugene, Oregon

Angela Lee Duckworth
University of Pennsylvania

Conscientiousness has been shown to predict healthy behaviors, healthy social relationships, and physical health and longevity. The causal links, however, are complex and not well elaborated. Many extant studies have used comparable measures for conscientiousness, and a systematic endeavor to build cross-study analyses for conscientiousness and health now seems feasible. Of particular interest are efforts to construct new, more comprehensive causal models by linking findings and combining data from existing studies of different cohorts. Although methodological perils can threaten such integration, such efforts offer an early opportunity to enliven a life course perspective on conscientiousness, to see whether component facets of conscientiousness remain related to each other and to relevant mediators across broad spans of time, and to bolster the findings of the few long-term longitudinal studies of the dynamics of personality and health. A promising approach to testing new models involves pooling data from extant studies as an efficient and heuristic prelude to large-scale testing of interventions.

Keywords: conscientiousness, personality, health, life-span perspective, integrative data analysis

It is now well established that conscientiousness predicts health and longevity in various populations and over long periods of time (Kern & Friedman, 2008; Roberts et al., 2007). The reliable, replicated association of this personality trait to longevity is especially remarkable, as longevity is not distorted by self-report or misdiagnosis, is a long-term outcome, and is generally recognized as the best single measure of a population's health. Although other personality traits are also relevant to health, the robust importance of conscientiousness that emerged in the past two decades was both unexpected and noteworthy, as it was mostly ignored in the vast research literatures on Type A behaviors, hostility, and health. The question naturally arises as to the reasons for this association and whether and how this information can be used to promote healthy aging.

The causal relations are not yet fully understood. Conscientious children and adolescents usually grow up to smoke less, eat health-

ier foods, wear seat belts, and engage in a range of other healthy behaviors (Bogg & Roberts, 2004; Lodi-Smith et al., 2010). But it is not known whether or when direct interventions to promote conscientiousness will lead to better habits and to subsequent long-term better health. In fact, existing evidence suggests that the causal relations are multifaceted and complex (Friedman, 2008; Hampson, 2008; Kern & Friedman, 2011). In part, this complexity arises from the fact that not only health behaviors but also biological factors and social relations are highly relevant both to conscientiousness and to health. Better understanding of these matters is essential for optimal health promotion, and it is also fundamental for deeper insight into conscientiousness as a core personality trait.

Personality and health both develop and change as a function of individual, social, and environmental influences, and newly evolving statistical techniques can be employed to model such change and complexity, given sufficient data. In this article, we describe new, more comprehensive models of personality and health, and we challenge the field to take advantage of existing resources to consider conscientiousness and health across the life span.

Models of Conscientiousness and Health

Theoretical models of personality and health are moving beyond single and static explanatory mechanisms toward sophisticated approaches that address the dynamic unfolding of multiple processes over time. To avoid repeating conceptual errors and methodological dead ends of the past, it is useful to understand the development of scientific research on personality and health through what we see as three generations of models.

First-generation personality-health models emerged in the 1950s and 1960s in response to the impossible-to-test neo-psychoanalytic

This article was published Online First October 22, 2012.

Howard S. Friedman, Department of Psychology, University of California, Riverside; Margaret L. Kern, Department of Psychology, University of Pennsylvania; Sarah E. Hampson, Oregon Research Institute, Eugene, Oregon; Angela Lee Duckworth, Department of Psychology, University of Pennsylvania.

This research was supported by Grant AG020048 from the National Institute on Aging (Sarah E. Hampson, principal investigator).

Correspondence concerning this article should be addressed to Howard S. Friedman, Department of Psychology, University of California, 900 University Avenue, Riverside, CA 92521-0426. E-mail: howard.friedman@ucr.edu

(neo-analytic) theories of psychosomatics. Personality was to be viewed as a marker or syndrome of health or illness. For example, the Type A pattern was seen as a syndrome of proneness to coronary disease, much as fever, inflammation, and exhaustion are a syndrome of developing infection. In a rush to discard unscientific notions of unconscious conflict, such approaches were generally atheoretical, typically ignoring key issues of construct validation and of personality development. They were usually tested cross-sectionally with correlations, and they often assumed that if symptoms are reduced (such as “hurry sickness”), then health would improve. After thousands of studies (well over 1,000 studies were published in the 1980s alone), such efforts collapsed as it became clear that much more needed to be known at a deeper level about the validity and conceptual basis of the personality constructs (including convergent and discriminant validity) and the causal mechanisms linking them to health (Friedman, 2007; Houston & Snyder, 1988; Roberts et al., 2014). Applying these lessons to conscientiousness means that a personality trait like impulsivity (a significant facet of unconscientiousness) is not profitably conceived to be a medical syndrome or an infection-like disruption in need of a drug or simple treatment.

The original approaches were generally replaced by second-generation models, in common use in research today, which focus primarily on single-mechanism causal mediation, with fairly stable, valid predictors. Figure 1 shows a behavioral mediation model. Conscientiousness or its close correlates play some role in later health and longevity, and unhealthy behaviors like smoking or drinking are clearly relevant (Friedman et al., 1995, 1993; Hampson, Goldberg, Vogt, & Dubanoski, 2006, 2007). Mediating variables have been tested using the classic Baron and Kenny (1986) approach, with significance often tested with the Sobel (1982) test, or more recently with structural equation modeling approaches (MacKinnon, 2008).

Various such second-generation models have been proposed, with mediators involving behavioral, psychological, physiological, or social pathways (Kern & Friedman, 2010; Smith, 2006). Complementary to the models in which personality is hypothesized to affect health through health behaviors, a common second-generation model of personality and health involves stress-and-coping mechanisms, which postulate that traits predispose some

individuals to cope poorly with strain, experience more physiological stress, and become ill. Such approaches may emphasize self-reported stress-and-coping differences or physiological reactions such as immune suppression or cardiovascular reactivity. Although sometimes highly sophisticated, such models typically assume that the physiological disturbances ultimately lead to cardiovascular disease, cancer, or other diseases, but the stress, coping, and physiological responses are tested simultaneously or over short time periods (Aldwin & Park, 2004; Smith, Gallo, & Ruiz, 2003). There are almost no long-term studies showing effects of early personality, chronic psychophysiological disruption in response to later challenge, and resultant significant disease outcome within the same individuals.

Bridges to third-generation models of personality and health are beginning to emerge, however, as some of the second-generation models are becoming more elaborate and complex, with underlying third variables such as early stress (or abuse) and genetic predispositions being invoked to inform some of the later-life concurrent associations between traits and disease. There is enough evidence of such influences for a “biological base” to be included in life-span models of conscientiousness and health. For example, serotonin levels in the central nervous system are known to have a genetic basis, be alterable by life circumstances, affect personality (including neuroticism and conscientiousness), and help regulate core bodily functions (appetite and sleep) necessary for good health (Carver, Johnson, & Joormann, 2008; Carver, Johnson, Joormann, Kim, & Nam, 2011; Caspi, Hariri, Holmes, Uher, & Moffitt, 2010; van Goozen, Fairchild, Snoek, & Harold, 2007). Early stress can lead to increased likelihood of disease many years later, perhaps either by cumulative damage building over time or by the biological embedding of disruptions during sensitive developmental periods (e.g., Anda, Butchart, Felitti, & Brown, 2010; Miller & Chen, 2010; Repetti, Taylor, & Seeman, 2002; Shonkoff, Boyce, & McEwen, 2009). And importantly, some individuals are genetically more prone both to be impulsive or neurotic and to develop heart disease and probably other diseases as well (McCaffery et al., 2006; Su et al., 2009; Sutin et al., 2010; Vaccarino et al., 2009). To what extent would life-span associations between conscientiousness and health be accounted for when genetic variation is taken into account, and if so, what is the causal mechanism? To what extent would behavioral interventions still be effective? This is an area in which twin studies may be profitably integrated.

Still, in most of these studies, personality traits and the hypothesized mechanisms are measured at a single period, and a single type of mediator (such as physiological reactivity) is typically postulated. Importantly, none of these approaches can explain what happens when personality matures or changes, why there is so much variability in individual outcomes, and precisely how personality can predict health and longevity so many years later. Far-reaching but variable influences of traits on remote outcomes such as longevity and health decades later likely require multifaceted explanatory processes that draw on multiple mechanisms operating across the life span. That is, it is usually not the case that a psychological predisposition or reaction early in life would have a simple and unalterable effect on health decades later. Rather, intervening processes and trajectories across the years become significant and consequential.

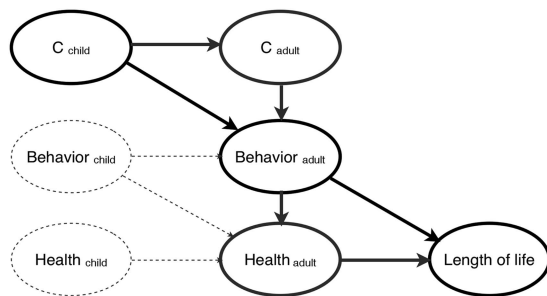


Figure 1. Life-span mediation model (partial), in which conscientiousness influences the health-related behaviors that a person engages in, which in turn predict length of life. In the life-span model, conscientiousness is measured prior to and simultaneously with the mechanism (behavior), which is measured prior to the health outcome (length of life). C = conscientiousness; Behavior = health-relevant behaviors. Dotted lines indicate implicit but unmeasured variables and processes.

In our view, third-generation models of personality and health herald a new class of more sophisticated approaches that incorporate dynamic concepts of aging and can profoundly alter the way personality and health are viewed (Aldwin & Yancura, 2011; Hampson & Friedman, 2008). We conceptualize the influence of a personality predictor on a health outcome as changing a course or trajectory—analogue to altering the course of a ship (or as dynamically maintaining course). As a result, the effects are long lasting (though not necessarily permanent), and prior influences may alter both the level and rate of change of a health outcome. The significance of a prior influence may be observable quickly or only after a period of time. In addition, health behaviors, social relations, physiological changes, and health outcomes can feed back and affect personality. This life-span approach to personality and health focuses on the stability and change in individual differences from cradle to grave. Figure 2 shows a promising model in this area. This figure includes core causal links that have emerged in recent research but are usually overlooked in traditional work on personality and health (it is not meant to be a full model).

As Figure 2 illustrates, third-generation models explicitly include social relations, as personality leads individuals to seek out, create, or elicit certain powerful social ties. Personality is directly relevant to who gets married, who stays married, who finishes school, who succeeds at work, and other core social involvements well documented to have major influences on health and longevity. Social interactions in turn feed back on personality and on patterns of health behaviors (health habits).

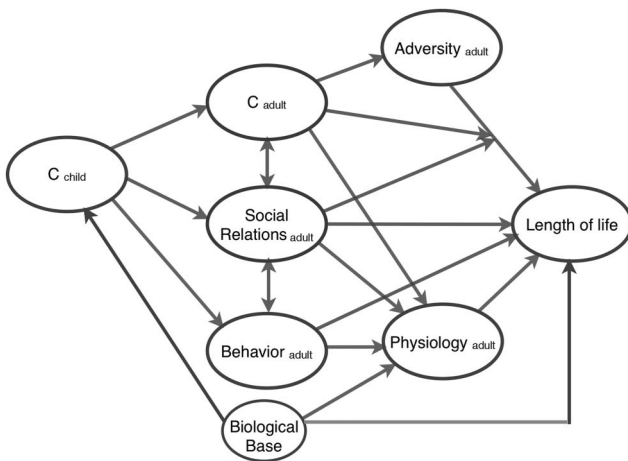


Figure 2. The ultimate goal of collaborative life-span studies and integrative analyses is to test full causal models. In this example, biological elements and early personality influence personality and health processes throughout life. Personality impacts the behaviors people engage in, the relationships people have, and the situations they select. Conscientiousness and social relationships also moderate stressful experiences that occur. To sort out the various influences, variables necessarily need to be measured prospectively and repeatedly across long periods of life, or carefully combined from relevant overlapping studies. The biological base includes genes, the impact of the prenatal environment (e.g., mother's alcohol or drug use during pregnancy), and the central nervous system changes in the early postnatal environment. Figure 2 is an example, not a complete model. C = conscientiousness; Behavior = health-relevant behaviors such as smoking.

Social relations (especially social support) also pair with personality in affecting reactions to adversity (i.e., potentially stressful environmental challenges; Taylor, 2011). The “biological base” (here condensed into one box in the figure) represents the fact that genes, the prenatal environment, and central nervous system changes in the postnatal environment and childhood are known to be relevant to personality development, to physiological reactivity, and to disease risk and longevity (Lupien, McEwen, Gunnar, & Heim, 2009). Further, the new emphases represented in Figure 2 suggest that personality itself is not static but slowly evolves, consistent with much recent research in this field (Chapman, Hampson & Clarkin, 2014).

Figure 2 focuses on length of life (longevity) as the outcome because it is the healthiest people who, on average, live the longest; but quality of life, incidence of disease, rate of recovery from disease, and cause of death are also important outcomes. Longevity is the most reliable health outcome, usually not plagued by the measurement biases that appear when self-report is used to assess both personality and health. In addition, many health studies focus on single diseases (such as reduction in a cancer rate) without simultaneously considering all-cause mortality. In our view, not only is it pragmatically problematic to dodge one disease only to die at the same age of another disease, but it is scientifically problematic to focus on one set of biological disease processes (such as immune dysfunction) when the underlying problem may be a more general failure of homeostasis.

These new approaches allow conceptualizations and measures to change across development. Just as the indicators of health in early life can be different from the indicators of health in late life, the relevant indicators of conscientiousness in elementary school children may or may not be identical to the key components of conscientiousness in mid-adulthood or in old age. Another way of thinking about this conceptual discontinuity is in terms of the subcomponents (or facets) of a construct. For example, impulse control may be the most relevant aspect of conscientiousness to health in adolescence, whereas planfulness might be more relevant in adults. The relevance of particular facets may differ by situation (see Eisenberg, Duckworth, Valiente, & Spinrad, 2014; Roberts et al., 2014). But because patterns or trajectories of healthy or unhealthy development typically emerge, mapping the pathways is a feasible endeavor.

Testing such third-generation models requires data from throughout the life span. Personality, behavior, physiology, social relations, and health need to be measured prospectively and repeatedly across long periods of time. Then, trajectory models can be tested to determine the best fitting trajectories and to evaluate the impact of relevant variables on individual variation around the average trajectory. Once the baseline model is established, predictors can be added to the model to see if they explain part of the individual variance in the overall growth model, and trajectories of individual differences can be used to predict late-life health and longevity (Diehr & Patrick, 2001; Kern, Reynolds, & Friedman, 2010). Jointly employing latent growth models and survival models facilitates assessment of growth processes and survival (McArdle, Small, Backman, & Fratiglioni, 2005; Singer & Willett, 2003).

Combining Existing Archival Data to Address Life-Span Personality–Health Relations

A major driver permitting movement beyond the earlier models has been the theories, methods, and statistical techniques emerging from long-term developmental studies. Such new models, however, pose the powerful challenge of gathering rich, meaningful data throughout the life span. Because of the obvious difficulties of collecting life-span data, we believe that this newest generation of personality and health research will need to employ and adapt longitudinal data from existing data sets and integrate data across multiple data sets. That is, it is highly unlikely that any one study will soon provide the opportunity to test complete life-span mechanisms. Rather, the concepts, causal pathways, and potential interventions will need to be pieced together from various studies and archives. Integrative studies and research programs can help the field transition to the next generation of models. For example, the article by Kern, Hampson, Goldberg & Friedman (2014) presents a second-generation model that links two samples and sets the stage for complex third-generation models to be tested. With sufficient skill, combining snapshots may produce a dynamic picture.

To facilitate such progress, we now illustrate how parts of this comprehensive model can be developed for testing specific hypotheses by employing integrative approaches, in which data from different longitudinal studies are statistically combined to distill optimal concepts and measures, replicate effects, and test causal models. It is impossible for a single researcher to follow a cohort from birth through death, but by combining resources across investigators and samples, causal processes potentially can be revealed.

Over the past century, a number of researchers had the foresight to gather detailed information on groups of people and follow them over time. Significant resources, in terms of effort, participant burden, and money have been spent studying people's lives. Recent efforts to promote data archiving and secondary analysis of existing data have made these resources increasingly available. Archived data that constitute the core of completed and ongoing longitudinal studies offer immense resources for addressing life-span questions that cannot be considered in short-term and cross-sectional studies (Block, 1993; Elder, Pavalko, & Clipp, 1993; Martin & Friedman, 2000; Tomlinson-Keasey, 1993).

Although substantial progress has been made in replicating findings across studies and in compiling results through meta-analyses, methodological advances now make it possible to integrate two or more studies to create a more comprehensive understanding of life-span processes. In some cases, data from two or more samples can be directly combined (Bauer & Hussong, 2009; Curran & Hussong, 2009). A particularly promising form of integrative data analysis for understanding personality and health is to employ different longitudinal studies to address different parts of the model at different points in the life span. For example, some studies have related childhood conscientiousness to health status in adulthood or to longevity through mediating health behaviors assessed in adolescence, while other studies may have data relating conscientiousness in young or mid-adulthood to health status in old age through health behaviors assessed in middle age (cf. Bogg & Roberts, 2004; Friedman et al., 1995; Hampson et al., 2007). Still other studies have health behavior and mortality data in

middle to old age (Aldwin, Spiro, Levenson, & Cupertino, 2001). The findings from the separate studies potentially could be integrated across the life span. Such integration would be useful for suggesting whether a particular model (e.g., mediation by certain health behaviors) seems especially promising and whether it appears more appropriate at some ages than others—that is, whether there appear to be critical periods in the life span for particular personality-to-health mechanisms.

A theory-based collaborative network can coordinate measures and analyses across studies and directly combine data from two or more longitudinal studies by creating metric bridges between studies (Hofer & Piccinin, 2009). Such integrative analysis is potentially powerful, as pooling data increases statistical power, extends periods of development (time) that can be studied, and provides an explicit test of sample heterogeneity. For example, the collaborative Integrative Analysis of Longitudinal Studies on Aging (IALSA) network currently includes 32 longitudinal studies on aging. That network has been developed as a resource for synthesizing longitudinal studies of aging, health, and cognition (Hofer & Piccinin, 2009, 2010). It is this sort of collaboration that could be applied to studying personality and health, especially to address the new challenges of integrating differing periods of development across the life span. Tasks include establishing standard metrics across studies and identifying multiple studies for each segment of development. On the other hand, pooling data can detract from the psychometric properties of the individual measures that have been distilled for a specific study (see Kern et al., 2014, for a discussion); in many cases, both traditional meta-analyses and integrative analyses (with raw data) should be conducted and compared.

Integrating Studies of Personality and Health

Any single study of conscientiousness and health necessarily has limitations, including sample characteristics (especially the health-relevant variables of age, gender, birth cohort, ethnicity, socioeconomic status, and health knowledge); the measures of conscientiousness employed; length of follow up, attrition, and missed assessments; the social and historical context; and study design. The original studies, especially if longitudinal, often were not explicitly studying personality and health, and their unrefined measures are less than optimal. Working with even a single longitudinal data set involves a huge commitment in terms of gathering and recasting the data into appropriate measures and then understanding the intricacies of the data across time; this becomes more complicated when two or more studies are combined. To be successful, integrative data analysis may require a collaborative effort, as each data set is unique and a primary investigator has experience working with the intricacies of the sample (Stewart & Clarke, 1995). For example, it is insufficient to use an item that seems to tap a construct of interest without understanding how the variable was measured, the coding structure, the idiosyncrasies of the sample and era, and other hard-to-understand background information. Equivalence of measures becomes especially important, as common measurement scales must be established (Bauer & Hussong, 2009; McArdle, Grimm, Hamagami, Bowles, & Meredith, 2009). A benefit of attempting to pool data (that goes well beyond meta-analysis) is thus the explicit focus on and testing of measure comparability.

Equivalence can sometimes be obtained by harmonizing measures through a recoding of items in a similar manner across two or more studies, or by statistically examining factor structures across items and samples (Bauer & Hussong, 2009; Curran et al., 2008). If there are at least some common items across the samples, then invariance can be tested and samples can be linked (Reise, Widaman, & Pugh, 1993). Within each sample, potentially relevant items with good variability are chosen to represent a latent construct, and potential items are evaluated for their intercorrelations and factor structures. Factor invariance is tested across samples by equating factor loadings, mean values, and error variances (for weak, strong, and strict invariance). Partial invariance can often be established, linking the two samples. As the number of invariant items increase, the stronger the links between samples will be, increasing validity and confidence in comparability. A third sample then can be collected to help establish comparability across the two main samples, with the third sample becoming the structural support for the bridge between the two main samples (McArdle et al., 2009). For example, Martin and Friedman (2000) collected NEO-PI-R personality data and a battery of archival items taken from the Terman Life Cycle Study on two new (modern) samples. Measurement invariance of the archival scales was assessed, and it was demonstrated that modern interpretable scales could be derived from 50- to 70-year-old archival data. Conceptual equivalence and alignment also may be established through qualitative judgments, with trained raters determining the extent to which a variable or a narrative assesses a particular construct in each sample.

Once studies are linked, two productive lines of research can be pursued. First, using structural equation modeling, models of personality and health can be directly tested, using a single combined sample. Other sample characteristics are then included in the analysis and can be tested directly as moderators, similar to a moderator analysis in meta-analysis. For example, one study may be relatively homogenous in terms of ethnicity and socioeconomic status (SES), whereas other samples may be more diverse. Ethnicity and SES can be included as moderators, providing an empirical test of generalizability and potential sample selection effects. Such a combination of multiple, complementary samples thus has the added benefit of moving toward a more context-based understanding of personality and health, as personality effects change somewhat (are moderated) by sample characteristics such as gender and ethnicity. That is, some heterogeneity of effects across samples is a benefit of these third-generation approaches, which encourage analysis of variation. Indeed, the possibility of cohort specificity is a key element of life course approaches.

Second, creating bridges among samples allows the filling in of missing pieces in the life-span model to uncover likely and unlikely pathways to health and longevity. For example, if one study has comprehensive early life personality assessments and midlife health, later-life longevity, and cause of death information, while a second study has comprehensive early life personality assessments and midlife health and physiology (such as immune function or cholesterol measures), then it may be possible to test for midlife physiological mediators of the early personality to late-life longevity associations. An example of this process, along with a discussion of the technique and challenges involved in integration, is presented in the article by Kern et al. (2014).

Construct Definition

Ideally, constructs are measured with the same well-validated measures on multiple samples at multiple assessment periods, but the reality of longitudinal research is that one investigator may define *conscientiousness* or *health* in a different manner from what another investigator would. In a meta-analysis of 20 studies linking conscientiousness to mortality risk (Kern & Friedman, 2008), some of the longitudinal samples measured conscientiousness using the NEO-PI (Costa & McCrae, 1992), whereas others tapped a single component such as low impulsiveness, social responsibility, or order. Although there is a consistent positive relation between higher levels of conscientiousness, longer life, and better physical health, the extent to which this is driven by the factor as a whole versus specific facets or by different facets at different times remains to be determined, as facets are known to differentially relate to specific outcomes (MacCann, Duckworth, & Roberts, 2009; Roberts, Chernyshenko, Stark, & Goldberg, 2005). Moreover, disagreement persists over the facet-level organization of conscientiousness. Most published factor structures include the facets of orderliness/organization, industriousness, responsibility/dependability, and self-control, whereas the facets of traditionalism/conventionality, achievement motivation, caution/planning, and competence have not been consistently identified.

A valuable feature of third-generation models of personality and health involves incorporating early life tendencies (including childhood measures of temperament) and their relation to adult measures of personality and individual differences. For example, there is some long-term stability of physical activity levels, which should not be ignored in studying adult physical activity and health (Friedman et al., 2008). Temperament is usually studied in infants, toddlers, and young children, whereas personality is largely studied in adults, which is no coincidence because temperament places more emphasis on “constitutional” differences that, with accumulated experience, become increasingly differentiated and elaborate. Temperament can be conceptualized as the “early-in-life framework” out of which adult personality traits develop (Saucier & Simonds, 2006, p. 118). Distinct theoretical traditions in the temperament research literature, however, have produced competing trait taxonomies (Caspi & Shiner, 2006; De Pauw & Mervielde, 2010; Zentner & Bates, 2008) not directly comparable to omnibus, multitrait measures of adult personality in their research.

Self-control is the best studied facet of conscientiousness and provides a useful case study of the challenges associated with overlapping but distinct conceptual and operational definitions. Most conceptualizations of self-control connote the voluntary regulation of attention, emotion, and behavior in the service of personally valued goals and standards. However, there is substantial behavioral evidence that self-control is itself multidimensional (Duckworth & Kern, 2011; Whiteside & Lynam, 2001), and while certain neural regions (e.g., lateral prefrontal cortex) associated with exerting self-control are common across domains, distinct subcortical regions seem to be involved in the generation of different kinds of impulses (Heatherton & Wagner, 2011). Consistent with neuroscience evidence, behavioral studies have suggested that there is substantially more within-subject variation in self-controlled behavior across domains than domain-general between-subjects variation. Domain specificity in how self-controlled individuals act may partly be explained by how strongly

individuals feel compelled to indulge in various temptations (Tsukayama, Duckworth, & Kim, 2012). There are surely implications for weight control, physical activity, nutrition, stress management, work success, substance abuse, and more.

Outside of the personality literature, research on self-control is typically transacted without reference to Big Five conscientiousness, though the conceptual overlap is so great that some researchers (e.g., Caspi & Shiner, 2006; Moffitt et al., 2011) may use the terms interchangeably. In adults, conscientious individuals are described as persevering in the face of difficulty, orderly, neat, responsible, dependable, achievement-oriented, adept at resisting distraction, and inclined to think before acting. Conscientious school-age children often are described in the same terms. Young children who are high in what temperament researchers call effortful control are adept at modulating their motor responses, can persist at frustrating tasks, and can regulate their emotion and attention appropriately. Empirical studies that directly compare measures of child temperament and adult personality support these theoretical linkages (Deal, Halverson, Havill, & Martin, 2005; Halverson et al., 2003; Victor, Rothbart, & Baker, 2012).

Caution is needed, however, as the behavioral manifestations of effortful control in early childhood (e.g., waiting patiently for one's turn when playing a game) differ substantially from behavioral manifestations of adult conscientiousness (e.g., resisting cigarettes and maintaining an exercise program), and so it may be that particular facets of conscientiousness that improve health can vary across the life course. Impulsivity and lack of constraint may be most relevant in the teenage years, by establishing patterns of substance use that lead to addictions that persist even as this potentially dangerous facet of conscientiousness declines. Traditionalism may be important during late adolescence as a protective factor against alcohol and drug abuse and unprotected sex, whereas industriousness may be more important in middle adulthood. Planfulness and orderliness may be more important in mid and later life for carrying out health protective behaviors. Much could be learned about conscientiousness mechanisms from studying the associations between facets of conscientiousness and health outcomes at different points in the life course.

Using Existing Studies to Inform Models

To fuel collaborative efforts on integrating studies of conscientiousness and health, we identified existing archived and ongoing studies that have the potential for integration. A number of organizations are archiving studies, making data more readily available, and working to harmonize large-scale nationally representative studies. Table 1 lists some of the resources available.

In addition to gathering the resources shown in Table 1, we searched PsycInfo and used Google searches with *personality*, *health*, and *longitudinal* as keywords. Additional data sets were identified, and we then compiled a list of potential conscientiousness-related terms (Roberts et al., 2005) and examined measures and items to identify studies that tapped at least one element of conscientiousness and health. Studies were included if there were measures of conscientiousness at the item, facet, or scale level, and self-rated, physiological, or mortality measures of health. Overall, 88 completed or ongoing longitudinal studies were identified that include conscientiousness-type variables and health information and potentially can speak to different parts of the

theoretical model. A subset of these studies is summarized in Table 2, with overlapping elements highlighted.

Is this approach feasible? To test the potential for integrating studies and building more comprehensive models, we collaboratively integrated data from two major longitudinal data sets: the Terman Life Cycle Study and the Hawaii Personality and Health Cohort Study (see Kern et al., 2014). The collaboration extends our own respective projects and draws on the knowledge and theories of multiple investigators, with the overall intention of piecing together life-span processes.

Existing studies have captured aspects of conscientiousness with varied degrees of precision. For example, in the PATH Through Life project, the Health and Retirement Study, and the Midlife in the United States study, a handful of self-rated traits tap aspects of self-control, organization, carelessness, or other aspects of conscientiousness. Other studies, such as the NICHD Study of Early Child Care and Youth Development, the Mills Longitudinal Study, and the Jyväskylä Longitudinal Study of Personality and Social Development, include comprehensive measures of personality and temperament that may connect more limited measures and allow consideration of personality change over time. Likewise, some studies only have a few self-reported items on health, whereas others have extensive physiological, self-report, and observed measures of health. Each study can be used to fill in certain gaps in the others.

Perhaps most intriguingly, data that are found in various samples then can be employed to fill in missing pieces in the full life-span model. For example, the Hawaii cohort and the Terman cohort cover many of the same key predictor variables for 40 years, prospectively from childhood on, including child and adult personality, health and well-being, health behaviors, stressful life events, and social relations. The Hawaiian sample does not yet have much mortality and cause of death data, but it has much more midlife physiological health information (including blood tests), whereas the Terman data set has less detailed physiological measures but extensive longevity and cause of death information, allowing one to complement the other.

Lifelong studies such as the Terman Study, the Victoria Longitudinal Study, the Normative Aging Study, and the Intergenerational Studies identify lifelong patterns that can be more intensely studied in specific time periods. Twin and adoption studies, such as the Early Growth and Development Study, the Swedish Adoption Twin Study of Aging and the Minnesota Twin Family Study, may contribute information on the genetic origins of conscientiousness–health relations. The National Longitudinal Study of Adolescent Health and the Dunedin Multidisciplinary Health and Development Study connect the adolescent and young adult periods. Studies such as the Longitudinal Study of Transitions in Four Stages of Life and the Minnesota Longitudinal Study of Parents and Children explicitly capture detailed information across important life transitions. The Berlin Aging Study and the Origins of Variance in the Old-Old: Octogenarian Twins study can inform late life processes for the oldest old. Large-scale nationally representative studies, such as the Whitehall II study in England and the Health and Retirement Survey in the United States, speak to the generalizability of conscientiousness–health relations. By integrating not only data but also theoretical and practical expertise from multiple disciplines, a synergy may emerge, with both theoretical and practical relevance.

Table 1
Databases for Identifying Potential Studies for Integration

Database	Brief description	Website
Economic and Social Data Service (ESDS) Longitudinal	ESDS Longitudinal is a joint venture between the United Kingdom Longitudinal Studies Centre and the UK Data Archive that supports the use of a range of the most widely used longitudinal data collections in the United Kingdom.	http://www.esds.ac.uk/longitudinal/
Henry A. Murray Research Archives at Harvard University	The Henry A. Murray Research Archive is Harvard's endowed, permanent repository for quantitative and qualitative research data at the Institute for Quantitative Social Science (IQSS) and provides physical storage for the entire IQSS Dataverse Network.	http://www.murray.harvard.edu/
Integrative Analysis of Longitudinal Studies on Aging (IALSA)	IALSA is a collaborative research infrastructure to coordinate interdisciplinary cross-national research on within-subject aging-related changes in health and cognition.	http://ialsauvic.ca/Plone
JenAge Information Centre Ageing-Related Databases	The JenAge Information Centre provides information on aging and systems biology. It includes databases of biological data, demographic data, diseases, and metadata.	http://info-centre.jenage.de/ageing/databases.html
National Institute of Aging (NIA) Database of Longitudinal Studies	The NIA provides a searchable database of existing sources of longitudinal data on aging (e.g., ongoing longitudinal cohorts, longitudinal data sets, biospecimen repositories) and would be a valuable resource for facilitating future research on aging changes across the life span.	http://www.nia.nih.gov/ResearchInformation/ScientificResources/LongitudinalStudies.htm
NIA publicly available databases	The NIA provides a listing of publicly available databases of studies that it has funded entirely or in part.	http://www.nia.nih.gov/NR/rdonlyres/F633C985-9082-4FE3-8E7D-CE9268168FAA/13732/PubliclyAvailableDatasets_current1.pdf
U.S. Health Data Community	HealthData.gov is a one-stop resource for the growing ecosystem of innovators who are turning data into new applications, services, and insights that can help improve health.	http://www.data.gov/health
University of Michigan Inter-University Consortium for Political and Social Research (ICPSR)	ICPSR offers more than 500,000 digital files containing social science research data. Disciplines represented include political science, sociology, demography, economics, history, gerontology, criminal justice, public health, foreign policy, terrorism, health and medical care, early education, education, racial and ethnic minorities, psychology, law, substance abuse and mental health, and more.	http://www.icpsr.umich.edu/icpsrweb/ICPSR/index.jsp

Table 2
Longitudinal Studies With Overlapping Information on Conscientiousness and Health-Related Variables

Name of study	Baseline characteristics					Measured variables																
	Country	Year	Age	N	Waves	A	B	C	D	E	F	G	H	I	J	K	L	M	N	O	P	Q
Amsterdam Growth and Health Longitudinal Study (AGHLS; Kemper et al., 1997)	Netherlands	1976	13 years	600+	6			X				X	X				X	X	X			
Avon Longitudinal Study of Parents and Children (ALSPAC; Golding et al., 2001)	England	1991	Prenatal	15,224	15–20	X	X	X	X	X	X	X	X	X	X	X	X	X	X	X	X	X
Baltimore Longitudinal Study on Aging (BLSA; Shick et al., 1984)	United States	1958	20–100 years	3,000		X						X	X	X	X	X	X	X				
Berlin Aging Study (BASE; Baltes & Mayer, 1999)	Germany	1990	70–105 years	928	8			X	X			X	X	X	X	X	X	X	X			
Dunedin Multidisciplinary Health and Development Study (DMHDS; Silva, 1990)	New Zealand	1972–1973	Infants	1,037	12			X				X	X	X	X	X	X	X	X	X	X	X
Early Growth and Development Study (EGDS; Leve et al., 2007)	United States	2002	Birth–4 years	561 adoptive families	4	X	X	X	◆	X	X	X	◆	X	X	X	X	◆	◆	◆	◆	◆
Hawaii Personality and Health Cohort Study (HPHCS; Goldberg, 2001)	United States	1959–1967	Grades 1, 2, 5, or 6	2,404	6			X	X	X			X	X	X	X	X	X	X	X	X	X
Health and Retirement Study (HRS; National Institute of Aging, 2007)	United States	1992	Born 1931–1941	12,654	7–8			X	X			X	X	X	X	X	X	X	X	X	X	X
Intergenerational Studies (IGS; Block, 1971)	United States	1928–1932	21 months	105	4			X						X					X	X	X	X
Jyväskylä Longitudinal Study of Personality and Social Development (JYLS; Pulkkinen et al., 2006)	Finland	1968	8	369	10			X	X	X		X	X	X	X	X	X	X	X	X	X	X
Longitudinal Study of Transitions in Four Stages of Life (Lowenthal et al., 1975)	United States	1968	Varied	216	5			X	X			X	X	X	X	X	X	X	X	X	X	X
Lothian Birth Cohort Studies (LBCS; Deary et al., 2009)	Scotland	1921/1936	11 years	87,498	2					X			X	X	X	X	X	X				
Midlife in the United States (MIDUS; Brim et al., 2004)	United States	1994	25–74 years	3,485+	2			X	X				X	X	X	X	X	X	X	X	X	X
Mills Longitudinal Study (Helson, 2001)	United States	1956	Early 20s	141	5			X	X			X	X	X	X	X	X	X	X	X	X	X

(table continues)

Table 2 (continued)

Name of study	Country	Year	Baseline characteristics			Measured variables																
			Age	N	Waves	A	B	C	D	E	F	G	H	I	J	K	L	M	N	O	P	Q
Minnesota Longitudinal Study of Parents and Children (Sroufe et al., 2009)	United States	1975	Prenatal	267	28–30	X	X	X	X	X	X	X	X	X	X	X	X	X	X	X	X	X
Minnesota Twin Family Study (MTFS; Iacono & McGue, 2002)	United States	1983	30–50 years	About 8,400		X	X	X	X	X	X	X	X	X	X	X	X	X	X	X	X	X
National Longitudinal Study of Adolescent Health (ADD Health; Harris et al., 2009)	United States	1994	Grades 7–12	15,356	4	X	X	X	X	X	X	X	X	X	X	X	X	X	X	X	X	X
NICHD Study of Early Child Care and Youth Development (SECCYD; Shriver, 2006)	United States	1991	1 month	1,364	4	X	X	◆	X	X	X	X	◆	X	X	X	X	X	X	X	X	◆
Normative Aging Study (NAS; Aldwin et al., 2001)	United States	1963	21–80 years	2,280	13	X	X	X	X	X	X	X	X	X	X	X	X	X	X	X	X	X
Origins of Variance in the Old-Old: Octogenarian Twins (OCTO-Twin; Proctor et al., 2006)	Sweden	1990	80+ years	351 twin pairs	4	X	X	X	X	X	X	X	X	X	X	X	X	X	X	X	X	X
PATH Through Life project (Anstey et al., 2011)	Australia	1999/2000	20–24; 40–44; 60–64 years	2,404	3	X	X	X	X	X	X	X	X	X	X	X	X	X	X	X	X	X
Swedish Adoption Twin Study of Aging (SATSA; Finkel & Pedersen, 2004)	Sweden	1984	40–84 years	1,500	3	X	X	X	X	X	X	X	X	X	X	X	X	X	X	X	X	X
Terman Life Cycle Study (Friedman & Martin, 2011)	United States	1921–1922	6–15 years	1,528	15	X	X	X	X	X	X	X	X	X	X	X	X	X	X	X	X	X
Victoria Longitudinal Study (VLS; Dixon & de Frias, 2004)	Canada	1986	55–85 years	484	7+	X	X	X	X	X	X	X	X	X	X	X	X	X	X	X	X	X
Whitehall II study (Stress and Health Study; Marmot & Brunner, 2005)	England	1985	35–55 years	10,308	11	X	X	X	X	X	X	X	X	X	X	X	X	X	X	X	X	X

Note. Waves = total number of assessment waves/occasions. For measured variables, A = genetic information; B = temperament; C = child personality; D = adult personality; E = IQ/cognitive function; F = infant physical health; G = child physical health; H = adult physical health; I = child mental health; J = adult mental health; K = biological/physiological measures; L = mortality; M = diet and/or physical activity; N = smoking, drug, and/or alcohol use; O = stress/life events; P = social support; Q = education. NICHD = National Institute of Child Health & Human Development; PATH = Personality & Total Health; ◆ = information available on the parent/caregiver, not the child participant.

Finally, with detailed life-span data, optimal long-term biopsychosocial trajectories to healthy aging and longevity can be derived and described. With a deeper understanding of the developmental pathways to a healthy life, and a good sense of the mediators and moderators of these healthy pathways, more focused and informed intervention can be developed and then tested (Friedman & Martin, 2011). In other words, rather than trying out conscientiousness-relevant health interventions on a willy-nilly basis, it will likely be much more efficient and fruitful to proceed with a fuller grasp of the admittedly complex forces that lead some individuals to thrive while others falter.

Conclusion

Efforts to promote healthy aging are often aimed at adults at a single point in time, with little attention to the life-span trajectories. Such models—which undervalue or ignore life change and development—fail to consider the many different pathways to healthy or unhealthy patterns and the interactions of relevant biopsychosocial factors. Just as individuals are obese, or poorly nourished, or inactive for a variety of reasons in their life histories and are unlikely to benefit from exactly the same programs at different times, in different ways, and for different reasons. A life-pathways or life-course approach—with clusters of predictors and with interactions between variables as moderators and mediators—seems especially promising at this stage, as the trajectories need to be better understood. This life-pathways approach—coupled with application of the epidemiological work that has been done on data harmonization and on cognition and aging—is new to the field of personality and health. But without comprehensive causal models, ad hoc interventions to improve the public health will inevitably falter.

As more sophisticated and nuanced models of personality and health emerge—models that incorporate a true biopsychosocial perspective—it becomes more important and more challenging to gather and fully utilize relevant data. For example, how do changing trajectories of self-control relate to changing trajectories of health? Is stability or change more important, and which kinds of change are most important at which ages? As ongoing longitudinal studies proceed, it will be important to develop and include commensurate measures across multiple assessments and studies, so that the more complex, dynamic models can be tested. Further, we have focused on conscientiousness, but other traits—including neuroticism, extraversion, and agreeableness—are known to be relevant to health and to sometimes interact with each other; they should also be incorporated (Friedman, 2007). In the meantime, we believe there is a significant opportunity to test core models by integrating relevant pieces of the many longitudinal studies already conducted that gathered data on relevant elements of personality and health.

Ultimately, randomized intervention trials will be necessary, but it would probably be a mistake at this point to focus intensively and directly on large-scale interventions to raise levels of individual conscientiousness in an effort to promote health in the broader population. The new models warn against repeating the conceptual errors and methodological dead ends of the past. Some of the links between conscientiousness and health are noncausal, and many are indirect, involving social relations. Promoting societal and cultural

conditions that raise the likelihood of a conscientious and socially stable populace might potentially have dramatic health benefits, but efforts could backfire or collapse if an overly ambitious or premature intervention is begun. Instead, carefully focused pilot intervention studies are more likely to be a helpful complement to the integrative studies we propose to test pieces of the broader life-span model.

References

- Aldwin, C. M., & Park, C. L. (2004). Coping and physical health outcomes: An overview. *Psychology & Health, 19*, 277–281. doi:10.1080/0887044042000193514
- Aldwin, C. M., Spiro, A., III, Levenson, M. R., & Cupertino, A. P. (2001). Longitudinal findings from the Normative Aging Study: III. Personality, individual health trajectories, and mortality. *Psychology and Aging, 16*, 450–465. doi:10.1037/0882-7974.16.3.450
- Aldwin, C. M., & Yancura, L. (2011). Stress, coping, and adult development. In R. J. Contrada & A. Baum (Eds.), *The handbook of stress science: Biology, psychology, and health* (pp. 263–274). New York, NY: Springer.
- Anda, R. F., Butchart, A., Felitti, V. J., & Brown, D. W. (2010). Building a framework for global surveillance of the public health implications of adverse childhood experiences. *American Journal of Preventive Medicine, 39*, 93–98. doi:10.1016/j.amepre.2010.03.015
- Anstey, K., Christensen, H., Butterworth, P., Easteal, S., Mackinnon, A., Jacomb, T., . . . Jorm, A. (2011). Cohort profile: The PATH Through Life project. *International Journal of Epidemiology*. Advance online publication. doi:10.1093/ije/dyr025
- Baltes, P. B., & Mayer, K. U. (Eds.). (1999). *The Berlin Aging Study: Aging from 70 to 100*. New York, NY: Cambridge University Press.
- Baron, R. M., & Kenny, D. A. (1986). The moderator-mediator variable distinction in social psychological research: Conceptual, strategic, and statistical considerations. *Journal of Personality and Social Psychology, 51*, 1173–1182. doi:10.1037/0022-3514.51.6.1173
- Bauer, D. J., & Hussong, A. M. (2009). Psychometric approaches for developing commensurate measures across independent studies: Traditional and new models. *Psychological Methods, 14*, 101–125. doi:10.1037/a0015583
- Block, J. (1971). *Lives through time*. Berkeley, CA: Bancroft Books.
- Block, J. (1993). Studying personality the long way. In D. C. Funder, R. D. Parke, C. Tomlinson-Keasey, & K. Widaman (Eds.), *Studying lives through time: Personality and development* (pp. 9–41). Washington, DC: American Psychological Association. doi:10.1037/10127-018
- Bogg, T., & Roberts, B. W. (2004). Conscientiousness and health-related behaviors: A meta-analysis of the leading behavioral contributors to mortality. *Psychological Bulletin, 130*, 887–919. doi:10.1037/0033-2909.130.6.887
- Brim, O. G., Ryff, C. D., & Kessler, R. C. (Eds.). (2004). *How healthy are we? A national study of well-being at midlife*. Chicago, IL: University of Chicago Press.
- Carver, C. S., Johnson, S. L., & Joormann, J. (2008). Serotonergic function, two-mode models of self-regulation, and vulnerability to depression: What depression has in common with impulsive aggression. *Psychological Bulletin, 134*, 912–943. doi:10.1037/a0013740
- Carver, C. S., Johnson, S. L., Joormann, J., Kim, Y., & Nam, J. Y. (2011). Serotonin transporter polymorphism interacts with childhood adversity to predict aspects of impulsivity. *Psychological Science, 22*, 589–595. doi:10.1177/0956797611404085
- Caspi, A., Hariri, A. R., Holmes, A., Uher, R., & Moffitt, T. E. (2010). Genetic sensitivity to the environment: The case of the serotonin transporter gene and its implications for studying complex diseases and traits. *American Journal of Psychiatry, 167*, 509–527. doi:10.1176/appi.ajp.2010.09101452

- Caspi, A., & Shiner, R. L. (2006). Personality development. In W. Damon, R. Lerner, & N. Eisenberg (Eds.), *Handbook of child psychology* (6th ed., Vol. 3, pp. 300–365). New York, NY: Wiley.
- Chapman, B. P., Hampson, S., & Clarkin, J. (2014). Personality-informed interventions for healthy aging: Conclusions from a National Institute on Aging work group. *Developmental Psychology, 50*, 1426–1441. doi:10.1037/a0034135
- Costa, P. T., & McCrae, R. R. (1992). *Revised NEO Personality Inventory (NEO-PI-R) and NEO Five-Factor Inventory (NEO-FFI) professional manual*. Odessa, FL: Psychological Assessment Resources.
- Curran, P. J., & Hussong, A. M. (2009). Integrative data analysis: The simultaneous analysis of multiple data sets. *Psychological Methods, 14*, 81–100. doi:10.1037/a0015914
- Curran, P. J., Hussong, A. M., Cai, L., Huang, W., Chassin, L., Sher, K. J., & Zucker, R. A. (2008). Pooling data from multiple longitudinal studies: The role of item response theory in integrative data analysis. *Developmental Psychology, 44*, 365–380. doi:10.1037/0012-1649.44.2.365
- Deal, J. E., Halverson, C. F., Havill, V., & Martin, R. P. (2005). Temperament factors as longitudinal predictors of young adult personality. *Merrill-Palmer Quarterly, 51*, 315–334. doi:10.1353/mpq.2005.0015
- Deary, I. J., Whalley, L. J., & Starr, J. M. (2009). *A lifetime of intelligence: Follow-up studies of the Scottish Mental Surveys of 1932 and 1947*. Washington, DC: American Psychological Association.
- De Pauw, S. S. W., & Mervielde, I. (2010). Temperament, personality, and developmental psychopathology: A review based on the conceptual dimensions underlying childhood traits. *Child Psychiatry and Human Development, 41*, 313–329. doi:10.1007/s10578-009-0171-8
- Diehr, P., & Patrick, D. L. (2001). Probabilities of transition among health states for older adults. *Quality of Life Research, 10*, 431–442. doi:10.1023/A:1012566130639
- Dixon, R. A., & de Frias, C. M. (2004). The Victoria Longitudinal Study: From characterizing cognitive aging to illustrating changes in memory compensation. *Aging, Neuropsychology, and Cognition, 11*, 346–376.
- Duckworth, A. L., & Kern, M. L. (2011). A meta-analysis of the convergent validity for self-control measure. *Journal of Research in Personality, 45*, 259–268. doi:10.1016/j.jrp.2011.02.004
- Eisenberg, N., Duckworth, A. L., Spinard, T. L., & Valiente, C. (2014). Conscientiousness: Origins in childhood? *Developmental Psychology, 50*, 1331–1349. doi:10.1037/a0030977
- Elder, G. H., Jr., Pavalko, E. K., & Clipp, E. C. (1993). *Working with archival data: Studying lives (Sage University Papers Series, Quantitative Applications in the Social Sciences, No. 07-088)*. Newbury Park, CA: Sage.
- Finkel, D., & Pedersen, N. L. (2004). Processing speed and longitudinal trajectories of change for cognitive abilities: The Swedish Adoption/Twin Study of Aging. *Aging, Neuropsychology, and Cognition, 11*, 325–345.
- Friedman, H. S. (2007). Personality, disease, and self-healing. In H. S. Friedman & R. C. Silver (Eds.), *Foundations of health psychology* (pp. 172–199). New York, NY: Oxford University Press.
- Friedman, H. S. (2008). The multiple linkages of personality and disease. *Brain, Behavior, and Immunity, 22*, 668–675. doi:10.1016/j.bbi.2007.09.004
- Friedman, H. S., & Martin, L. R. (2011). *The Longevity Project: Surprising discoveries for health and long life from the landmark eight-decade study*. New York, NY: Hudson Street Press.
- Friedman, H. S., Martin, L. R., Tucker, J. S., Criqui, M. E., Kern, M. L., & Reynolds, C. (2008). Stability of physical activity across the life-span. *Journal of Health Psychology, 13*, 1092–1104. doi:10.1177/1359105308095963
- Friedman, H. S., Tucker, J. S., Schwartz, J. E., Martin, L. R., Tomlinson-Keasey, C., Wingard, D., & Criqui, M. (1995). Childhood conscientiousness and longevity: Health behaviors and cause of death. *Journal of Personality and Social Psychology, 68*, 696–703. doi:10.1037/0022-3514.68.4.696
- Friedman, H. S., Tucker, J. S., Tomlinson-Keasey, C., Schwartz, J. E., Wingard, D. L., & Criqui, M. H. (1993). Does childhood personality predict longevity? *Journal of Personality and Social Psychology, 65*, 176–185. doi:10.1037/0022-3514.65.1.176
- Goldberg, L. R. (2001). Analysis of Digman's child-personality data: Derivation of Big-Five factor scores from each of six samples. *Journal of Personality, 69*, 709–743.
- Golding, J., Pembrey, M., & Jones, R. (2001). ALSPAC—The Avon Longitudinal Study of Parents and Children: I. Study methodology. *Paediatric and Perinatal Epidemiology, 15*, 74–87.
- Halverson, C. F., Havill, V. L., Deal, J., Baker, S. R., Victor, J. B., Pavlopoulos, V., & Wen, L. (2003). Personality structure as derived from parental ratings of free descriptions of children: The inventory of child individual differences. *Journal of Personality, 71*, 995–1026. doi:10.1111/1467-6494.7106005
- Hampson, S. E. (2008). Mechanisms by which childhood personality traits influence adult well-being. *Current Directions in Psychological Science, 17*, 264–268. doi:10.1111/j.1467-8721.2008.00587.x
- Hampson, S. E., & Friedman, H. S. (2008). Personality and health: A lifespan perspective. In O. P. John, R. Robins, & L. Pervin (Eds.), *The handbook of personality: Theory and research* (3rd ed., pp. 770–794). New York, NY: Guilford Press.
- Hampson, S. E., Goldberg, L. R., Vogt, T. M., & Dubanoski, J. P. (2006). Forty years on: Teachers' assessments of children's personality traits predict self-reported health behaviors and outcomes at midlife. *Health Psychology, 25*, 57–64. doi:10.1037/0278-6133.25.1.57
- Hampson, S. E., Goldberg, L. R., Vogt, T. M., & Dubanoski, J. P. (2007). Mechanisms by which childhood personality traits influence adult health status: Educational attainment and healthy behaviors. *Health Psychology, 26*, 121–125. doi:10.1037/0278-6133.26.1.121
- Harris, K. M., Halpern, C. T., Whitsel, E., Hussey, J., Tabor, J., Entzel, P., & Udry, J. R. (2009). *The National Longitudinal Study of Adolescent Health: Research design*. Retrieved from <http://www.cpc.unc.edu/projects/addhealth/design>
- Heatherington, T. F., & Wagner, D. D. (2011). Cognitive neuroscience of self-regulation failure. *Trends in Cognitive Sciences, 15*, 132–139. doi:10.1016/j.tics.2010.12.005
- Helson, R. (2001, Fall). The Mills Longitudinal Study: Forty years and still going. *Mills Quarterly, 18*–21.
- Hofer, S. M., & Piccinin, A. M. (2009). Integrative data analysis through coordination of measurement and analysis protocol across independent longitudinal studies. *Psychological Methods, 14*, 150–164. doi:10.1037/a0015566
- Hofer, S. M., & Piccinin, A. M. (2010). Toward an integrative science of life-span development and aging. *Journals of Gerontology B: Psychological Sciences and Social Sciences, 65*, 269–278. doi:10.1093/geronb/gbq017
- Houston, B. K., & Snyder, C. R. (Eds.). (1988). *Type A behavior pattern: Research, theory, and intervention*. New York, NY: Wiley.
- Iacono, W. G., & McGue, M. (2002). Minnesota Twin Family Study. *Twin Research, 5*, 482–487.
- Kemper, H. C., van Mechelen, W., Post, G. B., Snel, J., Twisk, J. W., van Lenthe, F. J., & Welten, D. C. (1997). The Amsterdam Growth and Health Longitudinal Study: The past (1976–1996) and future (1997–?). *International Journal of Sports Medicine, 18*, S140–S150. doi:10.1055/s-2007-972707
- Kern, M. L., & Friedman, H. S. (2008). Do conscientious individuals live longer? A quantitative review. *Health Psychology, 27*, 505–512. doi:10.1037/0278-6133.27.5.505
- Kern, M. L., & Friedman, H. S. (2010). Why do some people thrive while others succumb to disease and stagnation? Personality, social relations,

- and resilience. In P. S. Fry & C. L. M. Keyes (Eds.), *Frontiers of resilient aging* (pp. 162–184). New York, NY: Cambridge University Press. doi:10.1017/CBO9780511763151.008
- Kern, M. L., & Friedman, H. S. (2011). Personality and pathways of influence on physical health. *Social and Personality Psychology Compass*, 576–587. doi:10.1111/j.1751-9004.2010.00331.x
- Kern, M. L., Hampson, S. E., Goldberg, L. R., & Friedman, H. S. (2014). Integrating prospective longitudinal data: Modeling personality and health in the Terman Life Cycle and Hawaii cohort studies. *Developmental Psychology*, 50, 1390–1406. doi:10.1037/a0030874
- Kern, M. L., Reynolds, C. A., & Friedman, H. S. (2010). Predictors of physical activity patterns across adulthood: A growth curve analysis. *Personality and Social Psychology Bulletin*, 36, 1058–1072. doi:10.1177/0146167210374834
- Leve, L. D., Neiderhiser, J. M., Ge, X., Scaramella, L. V., Conger, R. D., Reid, J. B., . . . Reiss, D. (2007). The Early Growth and Development Study: A prospective adoption design. *Twin Research and Human Genetics*, 1, 84–95. PMC: 2674795
- Lodi-Smith, J., Jackson, J. J., Bogg, T., Walton, K., Wood, D., Harms, P. D., & Roberts, B. W. (2010). Mechanisms of health: Education and health-related behaviors partially mediate the relationship between conscientiousness and self-reported physical health. *Psychology & Health*, 25, 305–319. doi:10.1080/08870440902736964
- Lowenthal, M. F., Thurnher, M., & Chiriboga, D. (1975). *Four stages of life*. San Francisco, CA: Jossey-Bass.
- Lupien, S. J., McEwen, B. S., Gunnar, M. R., & Heim, C. (2009). Effects of stress throughout the lifespan on the brain, behaviour and cognition. *Nature Reviews Neuroscience*, 10, 434–445. doi:10.1038/nrn2639
- MacCann, C., Duckworth, A. L., & Roberts, R. D. (2009). Empirical identification of the major facets of conscientiousness. *Learning and Individual Differences*, 19, 451–458. doi:10.1016/j.lindif.2009.03.007
- MacKinnon, D. P. (2008). *Introduction to statistical mediation analysis*. New York, NY: Erlbaum.
- Marmot, M., & Brunner, E. (2005). Cohort profile: The Whitehall II study. *International Journal of Epidemiology*, 34, 251–256. doi:10.1093/ije/dyh372
- Martin, L. R., & Friedman, H. S. (2000). Comparing personality scales across time: An illustrative study of validity and consistency in life-span archival data. *Journal of Personality*, 68, 85–110. doi:10.1111/1467-6494.00092
- McArdle, J. J., Grimm, K. J., Hamagami, F., Bowles, R. P., & Meredith, W. (2009). Modeling life-span growth curves of cognition using longitudinal data with multiple samples and changing scales of measurement. *Psychological Methods*, 14, 126–149. doi:10.1037/a0015857
- McArdle, J. J., Small, B. J., Backman, L., & Fratiglioni, L. (2005). Longitudinal models of growth and survival applied to early detection of Alzheimer's disease. *Journal of Geriatric Psychiatry and Neurology*, 18, 234–241. doi:10.1177/0891988705281879
- McCaffery, J. M., Frasure-Smith, N., Dubé, M. P., Thérioux, P., Rouleau, G. A., Duan, Q., & Lespérance, F. (2006). Common genetic vulnerability to depressive symptoms and coronary artery disease: A review and development of candidate genes related to inflammation and serotonin. *Psychosomatic Medicine*, 68, 187–200. doi:10.1097/01.psy.0000208630.79271.a0
- Miller, G. E., & Chen, E. (2010). Harsh family climate in early life presages the emergence of a proinflammatory phenotype in adolescence. *Psychological Science*, 21, 848–856. doi:10.1177/0956797610370161
- Moffitt, T. E., Arseneault, L., Belsky, D., Dickson, N., Hancox, R. J., Harrington, H. L., . . . Caspi, A. (2011). A gradient of childhood self-control, health, wealth, and public safety. *Proceedings of the National Academy of Sciences*. Advance online publication. doi:10.1073/pnas.1010076108
- National Institute of Aging. (2007). *Growing older in America: The Health and Retirement Study (NIH Publication No. 07-5757)*. Retrieved from <http://hrsonline.isr.umich.edu/index.php?p=dbook>
- Proctor, D. N., Fauth, E. B., Hoffman, L., Hofer, S. M., Berg, S., & Johansson, B. (2006). Longitudinal changes in physical functional performance among the oldest old: Insight from a study of Swedish twins. *Aging Clinical and Experimental Research*, 18, 517–530.
- Pulkkinen, L., Kaprio, J., & Rose, R. J. (Eds.). (2006). *Socioemotional development and health from adolescence to adulthood*. New York, NY: Cambridge University Press.
- Reise, S. P., Widaman, K. F., & Pugh, R. H. (1993). Confirmatory factor analysis and item response theory: Two approaches for exploring measurement invariance. *Psychological Bulletin*, 114, 552–566. doi:10.1037/0033-2909.114.3.552
- Repetti, R. L., Taylor, S. E., & Seeman, T. E. (2002). Risky families: Family social environments and the mental and physical health of offspring. *Psychological Bulletin*, 128, 330–366. doi:10.1037/0033-2909.128.2.330
- Roberts, B. W., Chernyshenko, O., Stark, S., & Goldberg, L. (2005). The structure of conscientiousness: An empirical investigation based on seven major personality questionnaires. *Personnel Psychology*, 58, 103–139. doi:10.1111/j.1744-6570.2005.00301.x
- Roberts, B. W., Kuncel, N. R., Shiner, R., Caspi, A., & Goldberg, L. R. (2007). The power of personality: The comparative validity of personality traits, socioeconomic status, and cognitive ability for predicting important life outcomes. *Perspectives on Psychological Science*, 2, 313–345. doi:10.1111/j.1745-6916.2007.00047.x
- Roberts, B. W., Lejuez, C., Krueger, R. F., Richards, J. M., & Hill, P. L. (2014). What is conscientiousness and how can it be assessed? *Developmental Psychology*, 50, 1315–1330. doi:10.1037/a0031109
- Saucier, G., & Simonds, J. (2006). The structure of personality and temperament. In D. K. Mroczek & T. D. Little (Eds.), *Handbook of personality development* (pp. 109–128). Mahwah, NJ: Erlbaum.
- Shick, N. W., Greulich, R. C., Andres, R., Arenberg, D., Costa, P. T., Jr., Lakatta, E. G., & Tombin, J. D. (1984). *Normal human aging: The Baltimore Longitudinal Study of Aging (NIH Publication No. 84-2450)*. Retrieved from http://www.grc.nia.nih.gov/blsahistory/blsa_1984/index.htm
- Shonkoff, J. P., Boyce, W. T., & McEwen, B. S. (2009). Neuroscience, molecular biology, and the childhood roots of health disparities: Building a new framework for health promotion and disease prevention. *JAMA: Journal of the American Medical Association*, 301, 2252–2259. doi:10.1001/jama.2009.754
- Shriver, E. K. (2006). *The NICHD Study of Early Child Care and Youth Development (SECCYD): Findings for children up to age 4 1/2 years (PubNo05-4318)*. Retrieved from http://www.nichd.nih.gov/publications/pubs_details.cfm?from=&pubs_id=5047
- Silva, P. A. (1990). The Dunedin Multidisciplinary Health and Development Study: A 15-year longitudinal study. *Paediatric and Perinatal Epidemiology*, 4, 76–107.
- Singer, J. D., & Willett, J. B. (2003). *Applied longitudinal data analysis: Modeling change and event occurrence*. Oxford, England: Oxford University Press.
- Smith, T. W. (2006). Personality as risk and resilience in physical health. *Current Directions in Psychological Science*, 15, 227–231. doi:10.1111/j.1467-8721.2006.00441.x
- Smith, T. W., Gallo, L. C., & Ruiz, J. M. (2003). Toward a social psychophysiology of cardiovascular reactivity: Interpersonal concepts and methods in the study of stress and coronary disease. In J. Suls & K. A. Wallston (Eds.), *Social psychological foundations of health and illness* (pp. 335–366). Malden, MA: Blackwell. doi:10.1002/9780470753552.ch13
- Sobel, M. E. (1982). Asymptotic confidence intervals for indirect effects in

- structural equation models. In S. Leinhardt (Ed.), *Sociological methodology* (pp. 290–312). San Francisco, CA: Jossey-Bass.
- Sroufe, L. A., Egeland, B., Carlson, E. A., & Collins, W. A. (2009). *The development of the person: The Minnesota Study of Risk and Adaptation From Birth to Adulthood*. New York, NY: Guilford Press.
- Stewart, L. A., & Clarke, M. J. (1995). Practical methodology of meta-analyses (overviews) using updated individual patient data. *Statistics in Medicine, 14*, 2057–2079. doi:10.1002/sim.4780141902
- Su, S., Miller, A. H., Snieder, H., Bremner, J. D., Ritchie, J., Maisano, C., & Vaccarino, V. (2009). Common genetic contributions to depressive symptoms and inflammatory markers in middle-aged men: The Twins Heart Study. *Psychosomatic Medicine, 71*, 152–158. doi:10.1097/PSY.0b013e31819082ef
- Sutin, A. R., Terracciano, A., Deiana, B., Uda, M., Schlessinger, D., Lakatta, E. G., & Costas, P. T., Jr. (2010). Cholesterol, triglycerides, and the five-factor model of personality. *Biological Psychology, 84*, 186–191. doi:10.1016/j.biopsycho.2010.01.012
- Taylor, S. E. (2011). Social support: A review. In H. S. Friedman (Ed.), *The Oxford handbook of health psychology* (pp. 189–214). New York, NY: Oxford University Press.
- Tomlinson-Keasey, C. (1993). Opportunities and challenges posted by archival data sets. In D. C. Funder, R. D. Parke, C. Tomlinson-Keasey, & K. Widaman (Eds.), *Studying lives through time: Personality and development* (pp. 65–92). Washington, DC: American Psychological Association. doi:10.1037/10127-020
- Tsukayama, E., Duckworth, A. L., & Kim, B. E. (2012). Resisting everything but temptation: Evidence and an explanation for domain-specific impulsivity. *European Journal of Personality, 26*, 318–334. doi:10.1002/per.841
- Vaccarino, V., Votaw, J., Faber, T., Veledar, E., Murrain, N. V., Jones, L. R., & Bremner, J. D. (2009). Major depression and coronary flow reserve detected by positron emission tomography. *Archives of Internal Medicine, 169*, 1668–1676. doi:10.1001/archinternmed.2009.330
- van Goozen, S. H. M., Fairchild, G., Snoek, H., & Harold, G. T. (2007). The evidence for a neurobiological model of childhood antisocial behavior. *Psychological Bulletin, 133*, 149–182. doi:10.1037/0033-2909.133.1.149
- Victor, J. B., Rothbart, M. K., & Baker, S. B. (2012). *Temperamental components of the developing personality*. Manuscript in preparation.
- Whiteside, S. P., & Lynam, D. R. (2001). The five factor model and impulsivity: Using a structural model of personality to understand impulsivity. *Personality and Individual Differences, 30*, 669–689. doi:10.1016/S0191-8869(00)00064-7
- Zentner, M., & Bates, J. E. (2008). Child temperament: An integrative review of concepts, research programs, and measures. *European Journal of Developmental Science, 2*, 7–37.

Received February 4, 2012

Revision received July 5, 2012

Accepted August 14, 2012 ■