



EPA Public Access

Author manuscript

Nat Rev Earth Environ. Author manuscript; available in PMC 2024 October 31.

About author manuscripts

Submit a manuscript

Published in final edited form as:

Nat Rev Earth Environ. 2023 October 31; 4: 770–784. doi:10.1038/s43017-023-00485-y.

The Anthropogenic Salt Cycle

Sujay S. Kaushal¹, Gene E. Likens^{2,3}, Paul M. Mayer⁴, Ruth R. Shatkay¹, Sydney A. Shelton¹, Stanley B. Grant^{5,6}, Ryan M. Utz⁷, Alexis M. Yaculak¹, Carly M. Maas¹, Jenna E. Reimer¹, Shantanu V. Bhide⁵, Joseph T. Malin¹, Megan A. Rippey^{5,6}

¹Department of Geology & Earth System Science Interdisciplinary Center, University of Maryland, College Park, MD, USA

²Cary Institute of Ecosystem Studies, Millbrook, NY, USA

³University of Connecticut, Storrs, CT, USA

⁴US Environmental Protection Agency, Office of Research and Development, Center for Public Health and Environmental Assessment, Pacific Ecological Systems Division, OR, USA

⁵Occoquan Watershed Monitoring Laboratory, The Charles E. Via Jr Department of Civil and Environmental Engineering, Virginia Tech, Manassas, VA, USA

⁶Center for Coastal Studies, Virginia Tech, Blacksburg, VA, USA

⁷Chatham University, Gibsonia, PA, USA

Abstract

Increasing salt production and use is shifting the natural balances of salt ions across Earth systems, causing interrelated effects across biophysical systems collectively known as freshwater salinization syndrome. In this Review, we conceptualize the natural salt cycle and synthesize increasing global trends of salt production and riverine salt concentrations and fluxes. The natural salt cycle is primarily driven by relatively slow geologic and hydrologic processes that bring different salts to the surface of the Earth. Anthropogenic activities have accelerated the processes, timescales and magnitudes of salt fluxes and altered their directionality, creating an anthropogenic salt cycle. Global salt production has increased rapidly over the past century for different salts, with approximately 300 Mt of NaCl produced per year. A salt budget for the USA suggests that salt fluxes in rivers can be within similar orders of magnitude as anthropogenic salt fluxes, and there can be substantial accumulation of salt in watersheds. Excess salt propagates along the anthropogenic salt cycle, causing freshwater salinization syndrome to extend beyond freshwater supplies and affect food and energy production, air quality, human health and infrastructure. There is a need to identify environmental limits and thresholds for salt ions and reduce salinization before planetary boundaries are exceeded, causing serious or irreversible damage across Earth systems.

Competing Interests

The authors have no competing interests.

Introduction

Salt, which makes up the major ions dissolved in the ground and surface waters of the Earth, is essential for regulating a variety of biological, geological and chemical processes across natural and engineered systems. However, human activities have dramatically altered the amounts and compositions of different salt ions in terrestrial and aquatic environments. In the USA, well over 36 Mt of rock salt (NaCl) has been mined per year¹. Approximately 20 Mt of NaCl is currently used for road salt in the USA^{2,3} (Box 1). On a global scale, approximately 39.55 Mt of K⁺- rich potash is extracted annually for use as agricultural fertilizer⁴. At present rates of consumption without changes in lifestyles or management, an average newborn infant will require a supply of 13.6 t of salt throughout their lifetime⁵.

Starting in the twentieth century, an increase in anthropogenic salt inputs exceeding biological, geochemical and engineering demands has driven long-term increases in the pools, residence times and fluxes of different salt ions^{6,7}. Salinization of water, soil and air has increased because of irrigation⁸, the application of road deicers and fertilizers, wastewater discharges, mining, resource extraction, human-accelerated weathering⁷ and saltwater intrusion⁹. Salinization has the potential to extract and co-mobilize many other contaminants from soils and sediments, including nutrients, metals, radionuclides and organics¹⁰. These so-called chemical cocktails of dissolved salts and other contaminants can have shared sources, flowpaths or biogeochemical reaction pathways⁹⁻¹¹, which are influenced by factors such as climate, geology, land use, human activities and time⁷. The suites of biological, physical and chemical impacts that commonly occur together are known as freshwater salinization syndrome (FSS)^{6-10,12}.

Inland waters are a key conduit for salts, but the magnitude and extent of FSS are now expanding beyond only a freshwater issue. Dissolved salt ions and evaporites impact land, air and infrastructure through soil salinization, erosion rates, decreased crop growth; the mobilization of dust and air pollution⁷; impacting pathogen survival¹³; the corrosion and scaling of metal pipes; changing potability and taste of drinking water; and the mobilization of metals in soils and groundwater including radionuclides⁸. Across land, air and water, there are myriad human health impacts associated with inhaling, drinking and consuming excess salt and its chemical cocktails such as hypertensive disorders, cancers and respiratory diseases⁸. Therefore, there is a need to understand the sources, fate and transport of salt across land, air and water as a holistic biogeochemical cycle that accounts for natural and anthropogenic processes.

In this Review, we conceptualize the natural salt cycle and its major processes. We compare how the natural salt cycle has been disturbed by human activities and identify major sources, transport and transformations of salt ions along the anthropogenic salt cycle from watershed to global scales. We examine how salt concentrations and fluxes are exceeding biological demands (or limits within which ecological systems can handle salt ions) owing to increasing societal demands for salt; this occurrence is illustrated by a national salt budget for the USA and by examining global effects across the hydrosphere, pedosphere, lithosphere, biosphere and atmosphere. Finally, we discuss emerging research directions and impacts.

The Natural Salt Cycle

Salt cycle occurs naturally on land in the lithosphere, pedosphere and biosphere. However, the global salt cycle remains poorly conceptualized; instead, diverse disciplines (geology^{14,15}, soil science, ecology, hydrology and oceanography) have considered how specific salt ions (mostly NaCl) impact particular components of the Earth such as its crust, soils, biota, freshwaters or oceans. For example, soil salinization is often considered independently of freshwater salinization, despite an obvious relationship between the two occurrences. Similarly, natural patterns of concentrations and fluxes of major ions in some of the major rivers of the world have been characterized¹⁶, but interactions and transport across soils, the atmosphere and deeper groundwater are not detailed. However, a baseline set of natural salt-related processes (referred to here as the natural salt cycle) must be established to understand anthropogenic disturbances (Fig. 1).

Salts on Earth

Salts are ionic compounds with cations and anions such that the product is neutral. Salts can be basic, acidic or neutral and each salt can have different solubility in water and subsequent ability to conduct electricity. The component ions can be inorganic (such as Cl⁻) or organic (such as CH₃COO⁻), monoatomic (such as F⁻) or polyatomic (such as NO₃⁻). Different salt ions have different affinities to form complexes with metals such as Cu and Pb, which have environmental and human health implications owing to toxicity. Abundant major salt ions such as Ca²⁺, Mg²⁺, K⁺, SO₄²⁻ and dissolved inorganic carbon (DIC) are found in the ground and surface waters of the Earth. Here, the term salt is used to represent all of these major ions (concentrations typically >1 mg l⁻¹ in Earth's water).

Geologic and terrestrial processes

Salts are released to the surface of Earth by the weathering of sedimentary rocks (including evaporites), igneous rocks and metamorphic rocks that are exposed at the surface of the Earth (Fig. 1). Evaporites can be dissolved when exposed to water, including groundwater¹⁷⁻²², releasing salt ions. Additionally, some rock units include salt layers, which often uplift in unique ways to form diapirs or salt domes²³. Salt diapirs are mobile masses that intrude into overlying harder rocks owing to the buoyancy of salt relative to other sediments and rocks.

Physical, chemical and biological weathering and erosion of rocks release salt ions to surface waters, soils and air. Salts in soils primarily come from the weathering of rocks and minerals, including carbonates and feldspars^{24,25}. Plants^{26,27}, fungi²⁸ and other organisms take up salt ions, depending on their nutrient needs and salt stress²⁶⁻³². Evaporation and plant transpiration pull soil water in the rooting zone, and water and salt ions move toward the surface via capillary action. Salts in soils accumulate once the water at the surface is evaporated to the atmosphere^{24,25,33,34}. In arid environments, this can lead to the formation of caliche or soil layers of calcium carbonates^{33,35}. Salt ions also accumulate in biomass and certain elemental combinations accumulate in soils through biogeochemical transformations (such as chloride interactions with organic matter forming organochlorines in forest soils).

Salt ions are released from soils via ion exchange and dissolution. Once dissolved in soil water or groundwater, salt ions can be transported via diffusion, advection and dispersion and enriched during freeze–thaw cycles (including brine rejection, which can occur when salty water freezes and salt ions do not fit within the crystal structure of ice and are expelled into surrounding water). From the soil, salt ions can enter aquatic systems or the atmosphere, where they undergo additional transport and physicochemical processes.

Salt ions are eventually precipitated, buried and lithified as sedimentary rocks and/or percolated to deeper groundwater or ocean subduction zones, in which their elemental constituents can undergo igneous and metamorphic reactions to form minerals in rocks. Salts can also be reincorporated into the lithosphere through the formation of evaporites through desiccation.

Processes in water

The natural salt cycle of the Earth is intimately connected to sources, fluxes and storage of water. Natural weathering fluxes of salts from land to water depend on climate (temperature and precipitation), rock type or geology, location or flowpath, biologic factors and time^{7,36,37}. The hydrological cycle is a major transporter of salt ions, and one of the largest salt fluxes is from rivers to oceans^{16,38}, with additional transport in soil water and groundwater^{39,40} (Table 1). For example, connate fluid, salty water that is trapped within rock during formation, can migrate and naturally lead to salinized groundwater^{41–45}. There are also natural salt fluxes from marine environments to freshwaters, owing to tidal fluctuations, long-term climate change or marine transgression^{24,25,46}, incidental flooding⁴⁵ and salt aerosol inputs through rain⁴⁷.

In marine environments, salt cycling is driven by evaporation, biogeochemical transformations, ice formation (resulting in brines) and saltwater intrusion. Reverse weathering controls major ion ratios and alkalinity in seawater through the deposition of silicate minerals involving divalent cations, primarily forming clays^{48–50}. Salt is precipitated from seawater, whereby carbonate deposits first at low salinities (most modern calcium carbonate is formed through biological processes⁵¹), then gypsum, and finally sodium chloride deposits last at high salinities^{23,52}. In locations of high heat flow, such as rift valleys and subduction zones, the water in seawater is vaporized leaving salt ions, increasing brine salinity until salt precipitates^{45,53,54}.

Processes in the atmosphere

Salt cycle also occurs naturally within the atmosphere of the Earth. Sea spray is also a primary source of aerosolized atmospheric salts⁵⁵ therefore, most deposition occurs over oceans or in coastal areas⁵⁵. Dry deposition typically exceeds wet deposition, and fluxes depend on wind speed, size of source area, proximity to source area, residence time and concentration of salts in the atmosphere, and contributions of wet and dry deposition^{55–58}. Natural salt in dust, including Na⁺ and Ca²⁺, comes from arid soils, dried lake beds, and salt flats^{33,59–61}. Atmospheric deposition of salt ions can accelerate melting of snowpacks on nearby mountains, as is occurring in arid regions, which impacts regional

water supplies⁶². Dust deposition rates vary with climate conditions and can range from 0.004 to 0.34 g m⁻² year⁻¹ during glacial cycles, which is 2 to 20 times higher than during interglacial cycles^{57,63}.

Disturbing the natural salt cycle

The natural salt cycle has been disturbed by the extraction of salt for anthropogenic uses, such as agriculture, road deicers, food preparation, industry, construction, and water and wastewater treatment. For example, salts are used heavily in the built environment — aggregate minerals in construction materials contain salt ions (CaSO₄²⁻ and CaCO₃). There are salt compounds and organic salts (including monosodium glutamate) in food additives, cosmetics, cleaning supplies, solvents and printing, which can contribute salt ions (including Na⁺, K⁺, Ca²⁺ and Mg²⁺) to the environment. There are also hydrated salts in household products (including bleaching powder (Ca(ClO)₂), anti-caking agents (potassium ferrocyanide (K₄[Fe(CN)₆](•xH₂O))), reagents in manufacturing, borax (Na₂[B₄O₅(OH)₄]•8H₂O) and washing soda (Na₂CO₃•10H₂O)), but the major ions of Na⁺, Ca²⁺, Mg²⁺, K⁺, Cl⁻, HCO₃⁻ and SO₄²⁻ are the primary focus here^{64,65}.

Global production and distribution of NaCl and many other salt ions such as K⁺, SO₄²⁻, Ca²⁺, Mg²⁺ and carbonates are rapidly increasing. There has been a corresponding increase in calcium carbonate, gypsum and halite production on a global scale (Fig. 2a). In the USA, for instance, overall salt consumption is now greater than salt production, which demonstrates the importance and reliance on imports (Fig. 2b). Salt production in China overtook US production in 2015; the 2013–2017 average production (68.7 Gt) is 1.6 times greater than US production (42.3 Gt)⁶⁶. Increasing salt use is a global issue and is probably because of various causes such as increased impervious surfaces (roadways and parking lots), increasing needs for road safety and traffic in colder climates, changes in human diet, agriculture and industry.

The anthropogenic salt cycle

Human disturbances of baseline processes drive an anthropogenic salt cycle (Fig. 1). Earth processes that influence the salt cycle naturally occur over long geologic periods (typically centuries to millions of years) but humans have dramatically accelerated this cycle by altering the forms, fluxes and fates of salts in the global cycle (Fig. 1). Land use change, agricultural practices, mining and urbanization have accelerated extraction, weathering and transport of salts from the lithosphere and pedosphere, diverting vast quantities of previously stored or geologically locked-up salts into the natural cycles of the Earth (Fig. 1). Furthermore, human-induced changes in the hydrological cycle and processes that increase salinization of freshwater are interacting to increase salt ion concentrations. As a result, there are rapidly increasing trends in salt ion concentrations in rivers over the past century^{8,10,67}. In this section, salt cycling under current anthropogenic influences is described and conceptualized.

Natural waters

Human activities have altered salt fluxes in freshwater ecosystems. Based on historical data from world river inputs to oceans, global fluxes from the major rivers of the world in 1970 were estimated as 4.04 Ca²⁺, 1.01 Mg²⁺, 1.88 Na⁺, 0.60 K⁺, 2.0 Cl⁻, 2.87 SO₄²⁻ and 16.54 HCO₃⁻ (in g m⁻² year⁻¹)¹⁶ (Table 1). The estimated anthropogenic salt inputs to the ocean were 47 Ca²⁺, 10.5 Mg²⁺, 78 Na⁺, 5 K⁺, 93 Cl⁻, 124 SO₄²⁻ and 100 HCO₃⁻ (in 106 t year⁻¹)¹⁶. Over the past 50 years, all of these ions have increased in streams and rivers on continental and global scales^{8,10,67,68} (Fig. 3), coinciding with a global increase in the consumption and production of salts¹⁰. For example, there are widespread increasing trends in electrical conductivity, chloride, sodium and other ions in freshwaters in North America^{9,69,70}. There have been increasing trends in DIC concentrations and fluxes in some rivers^{68,71,72}. DIC (primarily HCO₃⁻) fluxes range from 55 × 10⁹ to 2,450 × 10⁹ mol year⁻¹ in the 25 largest rivers in the world⁷³, and there are perturbations of DIC transport from land to sea⁷⁴. Rising salt concentrations suggest that the capacity of watersheds for diluting and attenuating salt ions to steady-state conditions, or salt assimilative capacity, can be exceeded⁶ (Fig. 4).

Increasing salt trends in freshwaters are caused by diverse drivers such as human-accelerated weathering⁷⁵, salt pollution from nonpoint and point sources, resource extraction⁷⁶ and groundwater pumping. Salt is concentrated in runoff enriched with road salts, agricultural fertilizers and lime, mine drainage, and ions from weathering of impervious surfaces. Salt ions in road runoff can be transported both rapidly to streams through conduits, subsurface piping and preferential flowpaths and more slowly through soil water and groundwater as salt plumes^{77,78}. DIC can be increased from agricultural liming, urban impervious surfaces, changes in atmospheric deposition and human-accelerated weathering^{68,79,80}. Salt is also added to groundwater as a result of pumping, injection of industrial and wastewater discharges, brines from fracking and gas and oil production^{81,82}, accumulation of road salts and fertilizers in groundwater, and saltwater intrusion in coastal regions⁸³.

Variations in salinization and in relationships between Na⁺ and Cl⁻ reflect variations in the sources, transport and transformation of salt ions across climate, geology, human activities, flowpaths and time⁷ (Fig. 4). For example, rivers draining semiarid and arid regions in South Africa can show enrichment in Na⁺ concentrations relative to Cl⁻ concentrations whereas rivers draining humid regions can show enrichment in Cl⁻ concentrations relative to Na⁺ owing to road salt and other pollution sources (Fig. 4). Retention of Na⁺ and Cl⁻ in groundwater can occur because of incomplete flushing of soils in the vadose zone, uptake by microbes and plants and ion exchange of Na⁺ on soil exchange sites^{84,85}. Overall, the attenuation effects of soil ion exchange, biological uptake and dilution effects of downstream water accumulation and/or precipitation events no longer drive salt concentrations below water quality limits.

The anthropogenic salt cycle can also be altered in marine waters through evaporative concentration from warming sea surface temperatures, sea level rise and saltwater intrusion. Saltwater intrusion impacts at least 501 cities worldwide, 108 of which support populations of more than 1 million⁸⁶. In the continental USA alone, coastal aquifers supply potable

water to 95 million people, and many are considered vulnerable to seawater intrusion because they lie below sea level; 15% of West Coast, 22.6% of Gulf Coast and 34.7% of East Coast groundwater well elevations within 10 km of the coast are below sea level⁸⁷. At present, landward hydraulic gradients are evident along at least 15% of the US coastline, suggesting that a large fraction of the coastal USA may be vulnerable to freshwater salinization⁸⁷. Only 2–3% seawater is needed to make a coastal groundwater aquifer unsuitable for drinking^{87,88}.

Engineered water systems

Although often overlooked, the engineered water cycle (including wastewaters) contributes to acceleration of the anthropogenic salt cycle. Salts originating from seawater and rocks are taken up by humans through consumption of food and beverages and released into domestic wastewater. An average person in the USA can consume 3,400–4,000 mg day⁻¹ of Na⁺ and excrete 3,414–3,803 mg day⁻¹ of Na⁺ (refs. 89,90). Wastewater loads from selected studies around the world show that households can discharge 90,629 mg of Na⁺ per person per week and 18,713 mg of K⁺ per person per week, and 38,768 mg of Cl⁻ per week and 11,236 mg of Ca²⁺ per week can be released into wastewater from an Australian household⁹¹ (Table 2).

Home products are a major contributor to salt loads, especially in effluent-dominated streams, which are a major and increasing fraction of the streams in the USA, for example. Chemical analysis of home products ranging from toothpaste to dishwashing soap suggests that salt ions such as Cl⁻ are prevalent across products and are especially high in soaps, deodorants, in-cistern toilet fresheners and powdered laundry detergents (mean concentrations of 89, 67, 53 and 27 g kg⁻¹ product, respectively^{12,64,65,91}). Of these products, powdered detergents are expected to contribute most to overall salt mass loading, with estimates of Cl⁻ loading ranging from 21 g person⁻¹ week⁻¹ to 86 g person⁻¹ week⁻¹ (ref. 64). Individual in-home products (and the wastewater streams they contribute to) contain unique chemical cocktails that are part of the anthropogenic salt cycle. For instance, although laundry and dishwasher powder have elevated concentrations of fluoride, chloride and, in some countries, phosphorus⁹² and low concentrations of cobalt, antimony and selenium, shower and bath products (such as shampoos and conditioners) are the opposite. Therefore, wastewater salt profiles, and their contribution to the anthropogenic salt cycle, are a signature of the products that societies use⁶⁴.

Engineered systems also contribute to salinization through the addition of salts used in the treatment of drinking water and wastewater. As the population of the world continues to increase, water management, reuse and treatment will all increase. Adoption of treatment upgrades, such as reverse osmosis systems, to remove salts is one possible solution, but also raises concerns, including the energy and carbon footprint and the potential environmental impacts of brine disposal^{6,12}. Salt ions are added at almost every step along engineered water systems, and thus, the ways water is used, reused and recycled for urban and agricultural uses can impact inland freshwater salinization.

Land

Although salts naturally occur in soils, approximately 1 billion ha of soils are impacted by anthropogenic salinization, primarily owing to irrigation, fertilization and liming⁹³ (Fig. 3a). Between 1970 and 1980, approximately 6.5% of the soils of the world capable of growing crops were either saline or sodic⁹⁴, and over 50% of the croplands of the world could be impacted by salinization by the end of the twenty-first century^{95,96}. These estimates have some inaccuracies — remote sensing-based techniques probably overestimate the spatial extent of soil salinization in Mexico and underestimate impacts in Australia⁹³ (Fig. 3a) — but the spatial extent of soil salinization at the global scale is unequivocally growing^{93,96}.

The anthropogenic salt cycle on land is enhanced through increased evaporation rates⁹⁷, vegetation disturbance, anthropogenic inputs of salt ions and human-accelerated weathering. Evaporation of saline lakes causes precipitation of salts such as mirabilite, halite, thenardite and gypsum⁹⁸. Vegetation disturbance, deforestation and colonization by shallow-rooted plants can influence evaporation rates and concentrate salt ions in upper soil horizons through capillary action.

Anthropogenic inputs include potash, which is enriched in K⁺ and mined or concentrated through evaporation of lakes and subsurface brines⁹⁹. In agricultural watersheds with rising chloride trends, chloride from potash fertilizers can be the dominant input (approximately 49 kg ha⁻¹ year⁻¹) and even exceed road salt sources (7.2–23.2 kg ha⁻¹ year⁻¹)¹⁰⁰. Cation exchange dictates how salts are stored and transported in soils and migrate vertically in the soil profile owing to leaching and capillary action. There can be substantial accumulation of anthropogenic salts in soils owing to retention of Cl⁻ because of incomplete water flushing, uptake by microbes and plants, chlorination of organic matter, and ion exchange of Na⁺ at soil exchange sites^{84,85}.

The built environment impacts the salt cycle through weathering and the mining of materials for construction (including sand and gravel extracted from open pits and quarries; bedrock that is drilled, blasted, and mined to produce crushed stone; and limestone and dolomite produced from underground mines)¹⁰¹. A key example is the widespread extraction of salt ions to make concrete, dry wall and other construction materials. The rates of mineral weathering of this concrete and ‘urban karst’⁷⁵ can be faster than those of other types of sedimentary rocks accelerating the release of salt ions. Eventually, chemical and physical weathering of rock aggregates in the built environment degrade surfaces and cause dissolution, honeycomb weathering, weathered rims and rinds, spalling and salt corrosions on stone¹⁰² contributing to salt ion pollution to surface waters⁷⁵.

Atmosphere

Human activities have altered sources and fluxes of salt in the atmosphere. In arid regions, the drying of the Aral Sea and other drying lake beds around the world (owing to diversions, irrigations, climate change and other factors) have increased mobilization of saline dust and particulate pollutants across vast regions^{103,104}. Desertification and increased dry lake beds can have total suspended particulate concentrations of approximately 230–290 µg m⁻³ of

air, with soluble salts comprising 3–20% of the total suspended particulates¹⁰⁴. Drought and catchment scale disturbances resulting from human activities such as farming, water use and urban development alter atmospheric fluxes of salts^{105,106}. For example, salts can be added to atmospheric deposition through dust from erosion of rangelands¹⁰⁵ and desertification in other locations worldwide¹⁰³. In the Western USA, dust loads have increased by 500% compared with the late Holocene owing to livestock grazing¹⁰⁵.

In colder regions, aerosolization of road salts (Na⁺ and Cl⁻) in PM 2.5 particles can increase during winter months¹⁰⁷. Road salt can be an important ClNO₂ source and influence atmospheric composition and air quality in the urban wintertime environment¹⁰⁸. There have been long-term increasing trends in atmospheric deposition of Na⁺ and Cl⁻ in some areas of the Northeastern USA probably owing to road salting⁸. Industrial activities, coal and biomass burning, traffic emissions, wear of asphalt, agricultural operations and wildfires can also increase mineral dust containing salt ions (for example, concentrations within urban dust are 2.4% Ca²⁺, 1.5% K⁺, 1.2% Na⁺ and 0.9% Mg²⁺)¹⁰⁹.

Cascading Impacts

Salinization has cascading impacts, which have already been documented in groundwater systems¹¹⁰ and ecological food webs^{111–113}. These impacts arise from the mobilization of metals, nutrients and organic matter by salt ions, through cation exchange, chemical complexation, changes in pH, solubility and biogeochemical reactions^{9–11}. As a result, metals and radionuclides in soils are mobilized and enter waterways, salt ions and metals from drying lake beds are lofted into the atmosphere, and drinking water pipes are corroded by salt ions.

Water cycling is also impacted by salinization, as it alters water density, freezing temperature and evaporation rates. For example, salt-rich dust from drying lakebeds has the potential to accelerate regional snow melt, which can be a problem for many communities on snowpack for water supply⁶², such as in the Western USA. Warming sea surface temperatures could increase evaporation and aerosolization of salts in droplets in air and cloud albedo¹¹⁴; aerosols scatter solar radiation and serve as seed particles for cloud drops, which could in turn affect precipitation. This section discusses cascading impacts across the Earth system.

Land and aquatic ecosystems

FSS refers to the suites of chemical, physical and biological impacts of salt ions on natural, built and social systems, but some ecosystem consequences are still complex to diagnose and connect comprehensively as interrelated symptoms of FSS. For example, salinization impacts on the physical and chemical properties of soils and waters lead to many overwhelming and coinciding changes in biological and human health impacts at the ecosystem scale. Atmospheric mobilization and deposition of salt ions can impact soil fertility, air quality, eutrophication and human health in distant locations¹¹⁵. Increasing soil salinization impacts aggregate structure, erosion, hydraulic conductivity and infiltration rates, contaminant mobilization in soils, and crop growth^{96,116}. Salinization can also lead

to losses in sensitive species of animals and plants and decreases in soil biodiversity¹¹⁷. Overall, the impacts of FSS are broad and extensive, and some impacts are probably still yet to be discovered.

Similarly, salinization has led to reductions in survival, growth and reproduction among multiple freshwater organisms and over a wide range of salt concentrations and types^{118,119}. As a few examples, increasing salt concentrations impacts organisms by changing osmotic pressures, desiccating plant roots, impacting development, survival, mortality and parasitism of amphibians and other organisms, and increasing the invasion of salt-tolerant organisms^{96,120}. In freshwater ecosystems, increased salinization can also lead to declines in zooplankton, which leads to increased phytoplankton growth and potentially harmful algal blooms¹¹⁸. Impacts of algal blooms on water quality can be compounded by salinization impacts on density stratification and the vertical mixing of lakes³. Salinization can also enhance pathogen survival¹³ and alter microbial communities in both terrestrial soils and aquatic sediments¹²¹. Overall, increased salinization in terrestrial and aquatic systems can cause ecological community shifts with wide-ranging ecosystem impacts.

Human health and infrastructure

There are cascading direct and indirect human health impacts associated with salinization^{8,122}. There are direct impacts on respiratory illnesses, mosquito-borne diseases and mental health from salinization-related environmental degradation¹²³. For example, sodium in drinking water impacts hypertension¹²⁴ and hypertensive disorders in mothers before birth¹²⁵. Atmospheric deposition of urban dust enriched with salt ions can increase risk of pulmonary toxicity, cancers via inhalation, ingestion and dermal contact, and impacts on biodiversity^{115,126–128}. Road salts can contribute to atmospheric deposition, but little is known about the health impacts of road salt aerosols and dust inhalation.

Increased salinization also has indirect effects on human health by mobilizing contaminants, metals and radionuclides in the environment, such as radium (Ra), radon (Rn), thorium (Th) and uranium (U)^{10,129,130}. For example, salinization increases water–rock interactions, which cause the release of trace elements, including radionuclides, into the aquifer¹³¹. The abundance of Na⁺ ions causes increased competitive adsorption of radium with other cations and forms soluble radium complexes with Cl⁻ (refs. 130,132). Uranium is released by dissolution from minerals, desorption from mineral surfaces, formation of uranium complexes and precipitation¹²⁹. In drinking water, excess radionuclides can cause a variety of health issues, including cancers and nephrotoxicity¹²⁹.

Infrastructure and urban environments, like roads, bridges, stormwater management, vehicles, road safety and metal infrastructure, are also impacted by salinization¹³. For example, salts in pipes cause corrosion and metal leaching, impacting safe drinking water and human health^{122,129,133}. Salinization also affects boiling points of water, energy production using steam and build-up of mineral scaling in piped infrastructure.

In the USA, for example, SO₂ concentrations have decreased in freshwaters because of air pollution regulations and decreases in SO₂ emissions from power plants¹³⁴, whereas Cl⁻

concentrations have simultaneously increased in streams of this same region owing to lack of road salt regulations⁶⁹. Increased Cl⁻:SO₄²⁻ mass ratios increase corrosion potential and leaching of metals such as Pb and Cu from drinking water pipes¹³³.

Biogeochemical cycles

The anthropogenic salt cycle has the potential to influence biogeochemical cascades. Salinization can influence episodic acidification⁶⁷ and long-term alkalization of rivers⁶⁸. For example, coupled relationships between DIC and Ca²⁺ and Mg²⁺ influence alkalinity and pH, microbial processes such as nitrification and denitrification¹³⁵, desorption of P from sediments¹²¹, toxicity of metals and the ability of rivers to neutralize coastal ocean acidification⁶⁸. Long-term increases in pH and alkalinity can further influence the solubility of certain fractions of organic matter and quality of dissolved organic carbon transported in rivers (which can then affect transport of metals bound to organic matter and other biogeochemical cycles)¹³⁶. In addition, emissions of CO₂ from streams and rivers are strongly influenced by pH, and river alkalization from carbonate salts.

The magnitude and scope of FSS have expanded well beyond only a freshwater issue. Salinization impacts can extend along an increasingly saltier hydrologic cycle across air, land and water. Different salt ions are added along each step of the hydrologic cycle in response to compounded human impacts via polluted runoff, increased evaporation rates through impoundments, irrigation, and climate change, addition of salts during water and wastewater treatment and wastewater discharges, mobilization of saline dust from drying lakes, saltwater intrusion, and other processes. However, the anthropogenic salt cycle is also driven by human alteration of geological and atmospheric processes. Thus, the impacts of the anthropogenic salt cycle transcend past the apparent boundaries of freshwaters and extend into terrestrial and atmospheric systems. Ultimately, salt is an increasing agent of global change with cascading impacts across air, land and water similar to greenhouse gases and nutrients.

Summary and future perspectives

Humans have redistributed salts among the terrestrial and aquatic ecosystems of the Earth, disturbing the natural salt cycle by driving rising salt concentrations and fluxes in many pools across Earth's systems. The rates of change in these fluxes vary but are much more rapid than natural background rates and timescales (Table 2). There are consequences for natural and engineered environments, including FSS, soil salinization and infrastructure corrosion, which propagate impacts across the Earth system (Supplementary Table 1).

Many questions remain regarding constraining the global salt cycle and understanding its cascading impacts. Most fundamentally, the global extent of salinization of soils and freshwaters needs to be more accurately measured. There are important spatial gaps in our knowledge, particularly regarding the magnitude and scope of salinization of freshwaters in South America, Asia and Africa (Fig. 2). These gaps can be addressed through international collaborations with researchers, citizen science and standardized measurements and data sets. There is also a need to estimate historical baselines of freshwater salinity across

different geographic regions to understand disturbances to the natural salt cycle. This could be investigated through modelling or palaeoecological studies of diatoms or other salinity proxies.

Anthropogenic impacts on the salt cycle need to be better understood to manage impacts on the salt cycle. Quantifying and constraining salt budgets from watersheds to continental and global scales can help researchers and policymakers to better understand the storage and retention of salts in soils and groundwater. An understanding of social dimensions of salt use could also aid the management of salt budgets at local watershed scales. Beyond direct inputs of anthropogenic salts to the environment, there are also many anthropogenically enhanced processes contributing to salinization (Fig. 1). Land use change, hydrologic alterations and dredging of channels promoting saltwater intrusion, for example, impact salt cycling, but the mechanisms and magnitude of these impacts are poorly documented. Similarly, consequences probably arise from extreme events (droughts, saltwater intrusion events and road salting during blizzards) that cause rapid changes in salt ion concentrations, but have been poorly characterized. Targeted monitoring of extreme events using sensors and proxies such as electrical conductivity for salt ions and associated chemical cocktails could yield new insights and enable better environmental planning.

FSS could become an existential threat to our freshwater supplies and generate a freshwater crisis. The research community must address strategies for managing FSS, such as analysing the potential for releasing water from reservoirs and tributaries to dilute salinity or conservation, restoration and stormwater management strategies. Upstream approaches are also needed to prevent FSS, but options are currently fraught. Adoption of treatment upgrades, such as reverse osmosis systems, to remove salts increases the carbon footprint of water treatment and creates additional issues such as brine disposal and loss of water production capacity^{6,12}. Reverse osmosis is also very expensive (both for installation and maintenance), and there are many regions of the world that cannot afford it. Salt ions are added at almost every step of engineered water management, and the ways water is reused and recycled for urban agricultural uses can further contribute to salinization of freshwater along the water cycle. Improving our understanding of the anthropogenic acceleration of the salt cycle is critical to generate measures to protect human health and the environment and to avoid shortfalls in high-demand salt resources.

A systems-level approach is now needed for studying, quantifying and constraining the anthropogenic salt cycle and can illuminate improved empirical and modelling studies and improve management approaches in the future. Human activities are increasing the production and consumption of multiple salt ions and accelerating the salt cycle. More work is necessary to identify when environmental limits are being exceeded for human health and ecosystem processes and services¹³⁷. Given that water, land and air are now impacted by increasing salinization across Earth systems, there needs to be a planetary boundary for safe and sustainable salt use similar to other biogeochemical flows of nitrogen, phosphorus and carbon dioxide¹³⁸. A new understanding of the anthropogenic salt cycle and constraining global, regional and watershed salt budgets are important for reducing salt consumption to decrease impacts on societies, ecosystems and infrastructure. More work is needed to understand how ecological communities change in response to salinization.

If environmental limits are exceeded, impacts along the anthropogenic salt cycle could cause harm to ecosystems, drinking water, human health, infrastructure and earth system processes, which can be difficult or nearly impossible to reverse over timescales relevant to human life spans.

Supplementary Material

Refer to Web version on PubMed Central for supplementary material.

Acknowledgements

This work was supported by: National Science Foundation GCR 2021089 and 2021015, Maryland Sea Grant SA75281870W, and the Washington Metropolitan Council of Governments contract # 21–001.

References

1. Jackson RB & Jobbágy EG From icy roads to salty streams. *Proceedings of the National Academy of Sciences* 102, 14487–14488 (2005).
2. Anning DW & Flynn ME Dissolved-solids sources, loads, yields, and concentrations in streams of the conterminous United States. *Dissolved-solids sources, loads, yields, and concentrations in streams of the conterminous United States vols 2014–5012* 113 <http://pubs.er.usgs.gov/publication/sir20145012> (2014).
3. Dugan HA & Arnott SE The ecosystem implications of road salt as a pollutant of freshwaters. *Wiley Interdisciplinary Reviews: Water* n/a, e1629 (2022).
4. Cañedo-Argüelles M et al. Effects of potash mining on river ecosystems: An experimental study. *Environmental Pollution* 224, 759–770 (2017). [PubMed: 28057374]
5. Geological Survey US. How large is a lifetime supply of minerals for the average person? <https://www.usgs.gov/faqs/how-large-a-lifetime-supply-minerals-average-person> (2023).
6. Grant SB et al. Can Common Pool Resource Theory Catalyze Stakeholder-Driven Solutions to the Freshwater Salinization Syndrome? *Environ. Sci. Technol* 56, 13517–13527 (2022). [PubMed: 36103712]
7. Kaushal SS et al. Five state factors control progressive stages of freshwater salinization syndrome. *Limnology and Oceanography Letters* 8, 190–211 (2023). [PubMed: 37539375]
8. Kaushal SS et al. Freshwater salinization syndrome: from emerging global problem to managing risks. *Biogeochemistry* 154, 255–292 (2021).
9. Kaushal SS et al. Freshwater salinization syndrome on a continental scale. *Proceedings of the National Academy of Sciences* 115, E574–E583 (2018).
10. Kaushal SS et al. Increased salinization of fresh water in the northeastern United States. *Proceedings of the National Academy of Sciences* 102, 13517–13520 (2005).
11. Bhide SV et al. Addressing the contribution of indirect potable reuse to inland freshwater salinization. *Nat Sustain* 4, 699–707 (2021).
12. Hintz WD, Fay L & Relyea RA Road salts, human safety, and the rising salinity of our fresh waters. *Frontiers in Ecology and the Environment* 20, 22–30 (2022).
13. Rengasamy P World salinization with emphasis on Australia. *Journal of Experimental Botany* 57, 1017–1023 (2006). [PubMed: 16510516]
14. Cañedo-Argüelles M et al. Salinisation of rivers: An urgent ecological issue. *Environmental Pollution* 173, 157–167 (2013). [PubMed: 23202646]
15. Canedo-Arguelles M et al. Saving freshwater from salts. *Science* 351, 914–916 (2016). [PubMed: 26917752]
16. Kaushal SS et al. Novel ‘chemical cocktails’ in inland waters are a consequence of the freshwater salinization syndrome. *Phil. Trans. R. Soc. B* 374, 20180017 (2019).

17. Kaushal SS et al. Making ‘chemical cocktails’ – Evolution of urban geochemical processes across the periodic table of elements. *Applied Geochemistry* 119, 104632 (2020).
18. DeVilbiss SE, Steele MK, Krometis L-AH & Badgley BD Freshwater salinization increases survival of *Escherichia coli* and risk of bacterial impairment. *Water Research* 191, 116812 (2021). [PubMed: 33461082]
19. Meybeck M Global Occurrence of Major Elements in Rivers. in *Treatise on Geochemistry* 207–223 (Elsevier, 2003). doi:10.1016/B0-08-043751-6/05164-1.
20. Johnsen HK, Rueslatten HG & Hovland MT The ‘Global Salt Cycle’: Formation of Giant Salt Accumulations, a Result of Subduction, Mantle Upwelling, and Rifting <https://www.preprints.org/manuscript/202107.0377/v1> (2021) doi:10.20944/preprints202107.0377.v1.
21. Kostick DS Material Flow of Salt. Information Circular <https://pubs.er.usgs.gov/publication/70005372> (1993).
22. Jackson MPA & Hudec MR Strike-slip salt tectonic systems. in *Salt Tectonics: Principles and Practice* 336–362 (Cambridge University Press, 2017). doi:10.1017/9781139003988.
23. Han P-Y et al. Halogen (F, Cl, Br, and I) concentrations of the upper continental crust through time as recorded in ancient glacial diamictite composites. *Geochimica et Cosmochimica Acta* 341, 28–45 (2023).
24. Prospero JM, Ginoux P, Torres O, Nicholson SE & Gill TE Environmental Characterization of Global Sources of Atmospheric Soil Dust Identified with the Nimbus 7 Total Ozone Mapping Spectrometer (toms) Absorbing Aerosol Product. *Reviews of Geophysics* 40, 2–1–2–31 (2002).
25. Elmore AJ, Kaste JM, Okin GS & Fantle MS Groundwater influences on atmospheric dust generation in deserts. *Journal of Arid Environments* 72, 1753–1765 (2008).
26. Feger KH Biogeochemistry of magnesium in forest ecosystems. in *Magnesium Deficiency in Forest Ecosystems* (eds. Hüttel RF & Schaaf W) 67–99 (Springer Netherlands, 1997). doi:10.1007/978-94-011-5402-4_3.
27. Middleton NJ Desert dust hazards: A global review. *Aeolian Research* 24, 53–63 (2017).
28. Vet R et al. A global assessment of precipitation chemistry and deposition of sulfur, nitrogen, sea salt, base cations, organic acids, acidity and pH, and phosphorus. *Atmospheric Environment* 93, 3–100 (2014).
29. Likens GE et al. The biogeochemistry of calcium at Hubbard Brook. *Biogeochemistry* 41, 89–173 (1998).
30. Vodyanitskii Yu. N. & Makarov MI Organochlorine compounds and the biogeochemical cycle of chlorine in soils: A review. *Eurasian Soil Sc* 50, 1025–1032 (2017).
31. Erickson III DJ & Duce RA On the global flux of atmospheric sea salt. *Journal of Geophysical Research: Oceans* 93, 14079–14088 (1988).
32. Kohfeld KE & Harrison SP DIRTMAP: the geological record of dust. *Earth-Science Reviews* 54, 81–114 (2001).
33. Lawrence CR & Neff JC The contemporary physical and chemical flux of aeolian dust: A synthesis of direct measurements of dust deposition. *Chemical Geology* 267, 46–63 (2009).
34. Fischer H, Siggaard-Andersen M-L, Ruth U, Röthlisberger R & Wolff E Glacial/interglacial changes in mineral dust and sea-salt records in polar ice cores: Sources, transport, and deposition. *Reviews of Geophysics* 45, (2007).
35. Skiles SM et al. Implications of a shrinking Great Salt Lake for dust on snow deposition in the Wasatch Mountains, UT, as informed by a source to sink case study from the 13–14 April 2017 dust event. *Environ. Res. Lett* 13, 124031 (2018).
36. Hudec MR & Jackson MPA Terra infirma: Understanding salt tectonics. *Earth-Science Reviews* 82, 1–28 (2007).
37. Kirkham C et al. The demise of a ‘salt giant’ driven by uplift and thermal dissolution. *Earth and Planetary Science Letters* 531, 115933 (2020).
38. Weinberger R, Lyakhovsky V, Baer G & Begin ZB Mechanical modeling and InSAR measurements of Mount Sedom uplift, Dead Sea basin: Implications for effective viscosity of rock salt. *Geochemistry, Geophysics, Geosystems* 7, (2006).

39. Ellison RA, Thomas RJ, Jacobs J & Pharaoh TC Anatomy and uplift history of the emergent salt domes of the United Arab Emirates. *Arab J Geosci* 15, 23 (2021).
40. Bruthans J et al. Holocene marine terraces on two salt diapirs in the Persian Gulf, Iran: age, depositional history and uplift rates. *Journal of Quaternary Science* 21, 843–857 (2006).
41. Hopmans JW et al. Chapter One - Critical knowledge gaps and research priorities in global soil salinity. in *Advances in Agronomy* (ed. Sparks DL) vol. 169 1–191 (Academic Press, 2021).
42. Daliakopoulos IN et al. The threat of soil salinity: A European scale review. *Science of The Total Environment* 573, 727–739 (2016). [PubMed: 27591523]
43. White PJ & Broadley MR Chloride in Soils and its Uptake and Movement within the Plant: A Review. *Annals of Botany* 88, 967–988 (2001).
44. Leri AC & Myneni SCB Organochlorine turnover in forest ecosystems: The missing link in the terrestrial chlorine cycle. *Global Biogeochemical Cycles* 24, (2010).
45. Sverdrup H Chemical weathering of soil minerals and the role of biological processes. *Fungal Biology Reviews* 23, 94–100 (2009).
46. Ali S et al. Biochar soil amendment on alleviation of drought and salt stress in plants: a critical review. *Environ Sci Pollut Res* 24, 12700–12712 (2017).
47. Taylor LL et al. Biological weathering and the long-term carbon cycle: integrating mycorrhizal evolution and function into the current paradigm. *Geobiology* 7, 171–191 (2009). [PubMed: 19323695]
48. Tripler CE, Kaushal SS, Likens GE & Todd Walter M Patterns in potassium dynamics in forest ecosystems. *Ecology Letters* 9, 451–466 (2006). [PubMed: 16623731]
49. Li X, Chang SX & Salifu KF Soil texture and layering effects on water and salt dynamics in the presence of a water table: a review. *Environ. Rev* 22, 41–50 (2014).
50. Schlesinger WH The formation of caliche in soils of the Mojave Desert, California. *Geochimica et Cosmochimica Acta* 49, 57–66 (1985).
51. Bresler E Transport of salts in soils and subsoils. *Agricultural Water Management* 4, 35–62 (1981).
52. Gaillardet J, Dupré B, Louvat P & Allègre CJ Global silicate weathering and CO₂ consumption rates deduced from the chemistry of large rivers. *Chemical Geology* 159, 3–30 (1999).
53. Kaushal SS et al. Longitudinal stream synoptic monitoring tracks chemicals along watershed continuums: a typology of trends. *Front. Environ. Sci* 11, 1122485 (2023).
54. Anderson NL & Knapp R An overview of some of the large scale mechanisms of salt dissolution in western Canada. *GEOPHYSICS* 58, 1375–1387 (1993).
55. Anderson RY & Kirkland DW Dissolution of salt deposits by brine density flow. *Geol* 8, 66 (1980).
56. Jenyon MK Seismic expression of salt dissolution-related features in the North Sea. *Bulletin of Canadian Petroleum Geology* 36, 274–283 (1988).
57. Anderson RY Deep-seated salt dissolution in the Delaware Basin, Texas, and New Mexico. *New Mexico Geological Society* 10, 133–145.
58. Cooper AH Chapter 14 Geological hazards from salt mining, brine extraction and natural salt dissolution in the UK. *Geological Society, London, Engineering Geology Special Publications* 29, 369–387 (2020).
59. Smith JE & Santamarina JC Red sea evaporites: Formation, creep and dissolution. *Earth-Science Reviews* 104115 (2022) doi:10.1016/j.earscirev.2022.104115.
60. Domenico PA & Robbins GA The displacement of connate water from aquifers. *GSA Bulletin* 96, 328–335 (1985).
61. Yager RM, McCoy KJ, Voss CI, Sanford WE & Winston RB The role of uplift and erosion in the persistence of saline groundwater in the shallow subsurface. *Geophysical Research Letters* 44, 3672–3681 (2017).
62. Younger PL, Boyce AJ & Waring AJ Chloride waters of Great Britain revisited: from subsea formation waters to onshore geothermal fluids. *Proceedings of the Geologists' Association* 126, 453–465 (2015).

63. Stotler RL, Frapce SK, Ruskeeniemi T, Pitkänen P & Blowes DW The interglacial–glacial cycle and geochemical evolution of Canadian and Fennoscandian Shield groundwaters. *Geochimica et Cosmochimica Acta* 76, 45–67 (2012).
64. Li C, Gao X, Li S & Bundschuh J A review of the distribution, sources, genesis, and environmental concerns of salinity in groundwater. *Environ Sci Pollut Res* 27, 41157–41174 (2020).
65. Stallard RF Tectonic, environmental, and human aspects of weathering and erosion: A global review using a steady-state perspective. *Annu. Rev. Earth Planet. Sci* 23, 11–39 (1995).
66. Shields GA & Mills BJW Evaporite weathering and deposition as a long-term climate forcing mechanism. *Geology* 49, 299–303 (2020).
67. Tosaki Y et al. Deep incursion of seawater into the Hiroshima Granites during the Holocene transgression: Evidence from ³⁶Cl age of saline groundwater in the Hiroshima area, Japan. *Geochem. J* 51, 263–275 (2017).
68. Manca F, Capelli G & Tuccimei P Sea salt aerosol groundwater salinization in the Litorale Romano Natural Reserve (Rome, Central Italy). *Environ Earth Sci* 73, 4179–4190 (2015).
69. Briggs LI Evaporite facies. *Journal of Sedimentary Research* 28, 46–56 (1958).
70. Morse JW, Arvidson RS & Lüttge A Calcium Carbonate Formation and Dissolution. *Chem. Rev* 107, 342–381 (2007). [PubMed: 17261071]
71. Mackenzie FT & Garrels RM Chemical mass balance between rivers and oceans. *American Journal of Science* 264, 507–525 (1966).
72. Mackenzie FT & Kump LR Reverse Weathering, Clay Mineral Formation, and Oceanic Element Cycles. *Science* 270, 586–586 (1995).
73. Isson TT & Planavsky NJ Reverse weathering as a long-term stabilizer of marine pH and planetary climate. *Nature* 560, 471–475 (2018). [PubMed: 30089907]
74. Hovland M, Rueslåtten H & Johnsen HK Large salt accumulations as a consequence of hydrothermal processes associated with ‘Wilson cycles’: A review, Part 2: Application of a new salt-forming model on selected cases. *Marine and Petroleum Geology* 92, 128–148 (2018).
75. Hovland M, Rueslåtten H & Johnsen HK Large salt accumulations as a consequence of hydrothermal processes associated with ‘Wilson cycles’: A review Part 1: Towards a new understanding. *Marine and Petroleum Geology* 92, 987–1009 (2018).
76. Ivushkin K et al. Global mapping of soil salinity change. *Remote Sensing of Environment* 231, 111260 (2019).
77. Food and Agriculture Organization of the United Nations. Saline Soils and Their Management <https://www.fao.org/3/x5871e/x5871e04.htm> (2016).
78. Mahajan S & Tuteja N Cold, salinity and drought stresses: An overview. *Archives of Biochemistry and Biophysics* 444, 139–158 (2005). [PubMed: 16309626]
79. Litalien A & Zeeb B Curing the earth: A review of anthropogenic soil salinization and plant-based strategies for sustainable mitigation. *Science of The Total Environment* 698, 134235 (2020). [PubMed: 31783465]
80. Tjandraatmadja G, Pollard C, Sheedy C & Gozukra Y Sources of contaminants in domestic wastewater: nutrients and additional elements from household products. *Water for a Healthy Country National Research Flagship, CSIRO* (2010).
81. Diaper C et al. Sources of critical contaminants in domestic wastewater: contaminant loads from household appliances *Water for a Healthy Country National Research Flagship, CSIRO* (2008).
82. U.S. Geological Survey. Minerals Yearbook, volume I, Metals and Minerals. Minerals Yearbook, volume I, Metals and Minerals <http://pubs.er.usgs.gov/publication/70048194> (2023) doi:10.3133/mybvI.
83. Thorslund J, Bierkens MFP, Oude Essink GHP, Sutanudjaja EH & van Vliet MTH Common irrigation drivers of freshwater salinisation in river basins worldwide. *Nat Commun* 12, 4232 (2021). [PubMed: 34244500]
84. Dugan HA et al. Salting our freshwater lakes. *Proceedings of the National Academy of Sciences* 114, 4453–4458 (2017).
85. Kaushal SS et al. Increased river alkalization in the Eastern U.S. *Environ. Sci. Technol* 130724203606002 (2013) doi:10.1021/es401046s.

86. Stets EG, Kelly VJ & Crawford CG Long-term trends in alkalinity in large rivers of the conterminous US in relation to acidification, agriculture, and hydrologic modification. *Science of The Total Environment* 488–489, 280–289 (2014).
87. Raymond PA, Oh N-H, Turner RE & Broussard W Anthropogenically enhanced fluxes of water and carbon from the Mississippi River. *Nature* 451, 449–452 (2008). [PubMed: 18216851]
88. Drake TW et al. Increasing Alkalinity Export from Large Russian Arctic Rivers. *Environ. Sci. Technol* 52, 8302–8308 (2018). [PubMed: 29947507]
89. Gomez FA, Wanninkhof R, Barbero L & Lee S-K Increasing River Alkalinity Slows Ocean Acidification in the Northern Gulf of Mexico. *Geophysical Research Letters* 48, e2021GL096521 (2021).
90. Cai W-J et al. A comparative overview of weathering intensity and HCO₃⁻ flux in the world's major rivers with emphasis on the Changjiang, Huanghe, Zhujiang (Pearl) and Mississippi Rivers. *Continental Shelf Research* 28, 1538–1549 (2008).
91. Regnier P et al. Anthropogenic perturbation of the carbon fluxes from land to ocean. *Nature Geosci* 6, 597–607 (2013).
92. Abuduwaili J, Liu D & Wu G Saline dust storms and their ecological impacts in arid regions: Saline dust storms and their ecological impacts in arid regions. *null* 2, 144–150 (2010).
93. Gholampour A et al. Characterization of saline dust emission resulted from Urmia Lake drying. *J Environ Health Sci Engineer* 13, 82 (2015).
94. Neff JC et al. Increasing eolian dust deposition in the western United States linked to human activity. *Nature Geosci* 1, 189–195 (2008).
95. Goudie AS & Middleton NJ The changing frequency of dust storms through time. *Climatic Change* 20, 197–225 (1992).
96. Kolesar KR et al. Increases in wintertime PM_{2.5} sodium and chloride linked to snowfall and road salt application. *Atmospheric Environment* 177, 195–202 (2018).
97. McNamara SM et al. Observation of Road Salt Aerosol Driving Inland Wintertime Atmospheric Chlorine Chemistry. *ACS Cent. Sci* 6, 684–694 (2020). [PubMed: 32490185]
98. Kakavas S & Pandis SN Effects of urban dust emissions on fine and coarse PM levels and composition. *Atmospheric Environment* 246, 118006 (2021).
99. Jeppesen E, Beklio lu M, Özkan K & Akyürek Z Salinization Increase due to Climate Change Will Have Substantial Negative Effects on Inland Waters: A Call for Multifaceted Research at the Local and Global Scale. *The Innovation* 1, 100030 (2020). [PubMed: 34557708]
100. Letolle R, Aladin N, Filipov I & Boroffka NGO The Future Chemical Evolution of the Aral Sea from 2000 to the Years 2050. *Mitig Adapt Strat Glob Change* 10, 51–70 (2005).
101. Darst BC Development of the potash fertilizer industry. *Fertilizer Research* 28, 103–107 (1991).
102. David MB, Mitchell CA, Gentry LE & Salemm RK Chloride Sources and Losses in Two Tile-Drained Agricultural Watersheds. *J. Environ. Qual* 45, 341–348 (2016). [PubMed: 26828190]
103. Baraza T & Hasenmueller EA Road salt retention and transport through vadose zone soils to shallow groundwater. *Science of The Total Environment* 755, 142240 (2021). [PubMed: 33022462]
104. Robinson HK, Hasenmueller EA & Chambers LG Soil as a reservoir for road salt retention leading to its gradual release to groundwater. *Applied Geochemistry* 83, 72–85 (2017).
105. Drew LJ, Langer WH & Sachs JS Environmentalism and Natural Aggregate Mining. *Natural Resources Research* 10 (2002).
106. Kaushal SS et al. Human-accelerated weathering increases salinization, major ions, and alkalization in fresh water across land use. *Applied Geochemistry* 83, 121–135 (2017).
107. Winkler EM Weathering and weathering rates of natural stone. *Environ. Geol. Water Sci* 9, 85–92 (1987).
108. Kaushal SS et al. Increased River Alkalinization in the Eastern U.S. *Environ. Sci. Technol* 47, 10302–10311 (2013). [PubMed: 23883395]
109. Kaushal SS et al. Freshwater salinization syndrome alters retention and release of chemical cocktails along flowpaths: From stormwater management to urban streams. *Freshwater Science* 41, 420–441 (2022). [PubMed: 36213200]

110. Ross MRV, Nippgen F, Hassett BA, McGlynn BL & Bernhardt ES Pyrite Oxidation Drives Exceptionally High Weathering Rates and Geologic CO₂ Release in Mountaintop-Mined Landscapes. *Global Biogeochemical Cycles* 32, 1182–1194 (2018).
111. Robinson HK & Hasenmueller EA Transport of road salt contamination in karst aquifers and soils over multiple timescales. *Science of The Total Environment* 603–604, 94–108 (2017).
112. Bester M. I., Frind E. o., Molson J. w. & Rudolph D. I. Numerical Investigation of Road Salt Impact on an Urban Wellfield. *Groundwater* 44, 165–175 (2006).
113. Yusta-García R, Orta-Martínez M, Mayor P, González-Crespo C & Rosell-Melé A Water contamination from oil extraction activities in Northern Peruvian Amazonian rivers. *Environmental Pollution* 225, 370–380 (2017). [PubMed: 28408186]
114. Vengosh A, Jackson RB, Warner N, Darrah TH & Kondash A A Critical Review of the Risks to Water Resources from Unconventional Shale Gas Development and Hydraulic Fracturing in the United States. *Environ. Sci. Technol* 48, 8334–8348 (2014). [PubMed: 24606408]
115. Badaruddin S, Werner AD & Morgan LK Water table salinization due to seawater intrusion. *Water Resour. Res* 51, 8397–8408 (2015).
116. Cogswell ME et al. Estimated 24-Hour Urinary Sodium and Potassium Excretion in US Adults. *JAMA* 319, 1209 (2018). [PubMed: 29516104]
117. Food and Drug Administration. Sodium in Your Diet <https://www.fda.gov/food/nutrition-education-resources-materials/sodium-your-diet> (2022).
118. Tjandraatmadja G, Pollard C, Gozukara Y & Sheedy C Origins of priority contaminants in household wastewater - an experimental assessment 144 10.4225/08/59b0468f55165 (2009).
119. van Puijenbroek PJTM, Beusen AHW & Bouwman AF Datasets of the phosphorus content in laundry and dishwasher detergents. *Data in Brief* 21, 2284–2289 (2018). [PubMed: 30555867]
120. Cao T, Han D & Song X Past, present, and future of global seawater intrusion research: A bibliometric analysis. *Journal of Hydrology* 603, 126844 (2021).
121. Jasechko S, Perrone D, Seybold H, Fan Y & Kirchner JW Groundwater level observations in 250,000 coastal US wells reveal scope of potential seawater intrusion. *Nat Commun* 11, 3229 (2020). [PubMed: 32591535]
122. Panthi J, Pradhanang SM, Nolte A & Boving TB Saltwater intrusion into coastal aquifers in the contiguous United States — A systematic review of investigation approaches and monitoring networks. *Science of The Total Environment* 836, 155641 (2022). [PubMed: 35513146]
123. Parisi A, Monno V & Fidelibus MD Cascading vulnerability scenarios in the management of groundwater depletion and salinization in semi-arid areas. *International Journal of Disaster Risk Reduction* 30, 292–305 (2018).
124. Hintz WD et al. Salinization triggers a trophic cascade in experimental freshwater communities with varying food-chain length. *Ecological Applications* 27, 833–844 (2017). [PubMed: 27992971]
125. Hintz WD, Jones DK & Relyea RA Evolved tolerance to freshwater salinization in zooplankton: life-history trade-offs, cross-tolerance and reducing cascading effects. *Phil. Trans. R. Soc. B* 374, 20180012 (2019).
126. Moffett ER, Baker HK, Bonadonna CC, Shurin JB & Symons CC Cascading effects of freshwater salinization on plankton communities in the Sierra Nevada. *Limnol Oceanogr Letters* 8, 30–37 (2023).
127. Eyring V et al. Human influence on the climate system. in *Climate Change 2021: The Physical Science Basis. Contribution of Working Group I to the Sixth Assessment Report of the Intergovernmental Panel on Climate Change* (eds. Masson-Delmotte V et al.) 423–552 (Cambridge University Press, 2021). doi:10.1017/9781009157896.001.
128. Latham J & Smith MH Effect on global warming of wind-dependent aerosol generation at the ocean surface. *Nature* 347, 372–373 (1990).
129. Micklin P The Aral Sea Disaster. *Annu. Rev. Earth Planet. Sci* 35, 47–72 (2007).
130. Small I, van der Meer J & Upshur RE Acting on an environmental health disaster: the case of the Aral Sea. *Environmental Health Perspectives* 109, 547–549 (2001).
131. Jones BA & Fleck J Shrinking lakes, air pollution, and human health: Evidence from California’s Salton Sea. *Science of The Total Environment* 712, 136490 (2020). [PubMed: 31931219]

132. Ghale YAG, Tayanc M & Unal A Dried bottom of Urmia Lake as a new source of dust in the northwestern Iran: Understanding the impacts on local and regional air quality. *Atmospheric Environment* 262, 118635 (2021).
133. Hedin LO et al. Steep declines in atmospheric base cations in regions of Europe and North America. *Nature* 367, 351–354 (1994).
134. Vengosh A Salinization and Saline Environments. *Treatise on Geochemistry* 9, 35 (2003).
135. Pereira CS, Lopes I, Abrantes I, Sousa JP & Chelinho S Salinization effects on coastal ecosystems: a terrestrial model ecosystem approach. *Phil. Trans. R. Soc. B* 374, 20180251 (2019).
136. Hintz WD et al. Current water quality guidelines across North America and Europe do not protect lakes from salinization. *Proc. Natl. Acad. Sci. U.S.A* 119, e2115033119 (2022). [PubMed: 35193976]
137. Cunillera-Montcusí D et al. Freshwater salinisation: a research agenda for a saltier world. *Trends in Ecology & Evolution* 37, 440–453 (2022). [PubMed: 35058082]
138. Kinsman-Costello L et al. Mud in the city: Effects of freshwater salinization on inland urban wetland nitrogen and phosphorus availability and export. *Limnol Oceanogr Letters* 8, 112–130 (2023).
139. Edwards M & Triantafyllidou S Chloride-to-sulfate mass ratio and lead leaching to water. *Journal - American Water Works Association* 99, 96–109 (2007).
140. Kaushal SS Increased Salinization Decreases Safe Drinking Water. *Environ. Sci. Technol* 50, 2765–2766 (2016). [PubMed: 26903048]
141. Lazur A, VanDerwerker T & Koepenick K Review of Implications of Road Salt Use on Groundwater Quality—Corrosivity and Mobilization of Heavy Metals and Radionuclides. *Water Air Soil Pollut* 231, 474 (2020).
142. Likens GE, Driscoll CT & Buso DC Long-Term Effects of Acid Rain: Response and Recovery of a Forest Ecosystem. *Science* 272, 244–246 (1996).
143. Jardine A, Speldewinde P, Carver S & Weinstein P Dryland Salinity and Ecosystem Distress Syndrome: Human Health Implications. *EcoHealth* 4, 10–17 (2007).
144. Shammi M, Rahman Md., Bondad S & Bodrud-Doza Md. Impacts of Salinity Intrusion in Community Health: A Review of Experiences on Drinking Water Sodium from Coastal Areas of Bangladesh. *Healthcare* 7, 50 (2019). [PubMed: 30909429]
145. Khan AE et al. Salinity in Drinking Water and the Risk of (Pre)Eclampsia and Gestational Hypertension in Coastal Bangladesh: A Case-Control Study. *PLoS ONE* 9, e108715 (2014). [PubMed: 25268785]
146. McNaboe LA, Robbins GA & Dietz ME Mobilization of Radium and Radon by Deicing Salt Contamination of Groundwater. *Water Air Soil Pollut* 228, 94 (2017).
147. Vinson DS et al. Occurrence and mobilization of radium in fresh to saline coastal groundwater inferred from geochemical and isotopic tracers (Sr, S, O, H, Ra, Rn). *Applied Geochemistry* 38, 161–175 (2013).
148. Tamamura S et al. Salinity dependence of 226Ra adsorption on montmorillonite and kaolinite. *J Radioanal Nucl Chem* 299, 569–575 (2014).
149. Bai J et al. Nitrification potential of marsh soils from two natural saline–alkaline wetlands. *Biol Fertil Soils* 46, 525–529 (2010).
150. Duan S & Kaushal SS Salinization alters fluxes of bioreactive elements from stream ecosystems across land use. *Biogeosciences* 12, 7331–7347 (2015).
151. Van Vliet MTH, Flörke M & Wada Y Quality matters for water scarcity. *Nature Geosci* 10, 800–802 (2017).
152. U.S. Geological Survey. *Salt* [advance release] (2017).
153. Elvidge CD et al. Global Distribution and Density of Constructed Impervious Surfaces. *Sensors* 7, 1962–1979 (2007). [PubMed: 28903208]
154. Glicksman RL & Earnhart DH The Comparative Effectiveness of Government Interventions on Environmental Performance in the Chemical Industry. *Stan. Envtl. L.J* 26, 317–372 (2007).

155. Schroeder C A Decade of Change in Regulating the Chemical Industry Federal Regulation of the Chemical Industry: Foreword. *Law & Contemp. Probs* 46, 1–40 (1983).
156. Wetzel RG *Limnology: Lake and River Ecosystems* (Gulf Professional Publishing, 2001).
157. Olson JR Predicting combined effects of land use and climate change on river and stream salinity. *Phil. Trans. R. Soc. B* 374, 20180005 (2019).
158. Weinberg RF The upward transport of inclusions in Newtonian and power-law salt diapirs. *Tectonophysics* 228, 141–150 (1993).
159. Wilkinson BH, McElroy BJ, Kesler SE, Peters SE & Rothman ED Global geologic maps are tectonic speedometers—Rates of rock cycling from area-age frequencies. *GSA Bulletin* 121, 760–779 (2009).
160. Stockmann U, Minasny B & McBratney AB How fast does soil grow? *Geoderma* 216, 48–61 (2014).
161. Wu C, Lin Z & Liu X The global dust cycle and uncertainty in CMIP5 (Coupled Model Intercomparison Project phase 5) models. *Atmos. Chem. Phys* 20, 10401–10425 (2020).
162. Grythe H, Ström J, Krejci R, Quinn P & Stohl A A review of sea-spray aerosol source functions using a large global set of sea salt aerosol concentration measurements. *Atmospheric Chemistry and Physics* 14, 1277–1297 (2014).
163. National Atmospheric Deposition Program. National Trends Network Gradient Map (2021).
164. Likens GE & Bormann FH *Biogeochemistry of a Forested Ecosystem* (Springer, 1995). doi:10.1007/978-1-4612-4232-1.
165. Schlesinger WH Community Structure, Dynamics and Nutrient Cycling in the Okefenokee Cypress Swamp-Forest. *Ecological Monographs* 48, 43–65 (1978).
166. Redon P-O et al. Chloride and Organic Chlorine in Forest Soils: Storage, Residence Times, And Influence of Ecological Conditions. *Environ. Sci. Technol* 45, 7202–7208 (2011). [PubMed: 21761932]
167. Lucas Y The Role of Plants in Controlling Rates and Products of Weathering: Importance of Biological Pumping. *Rev. Earth Planet. Sci* 13, 135–63 (2001).
168. van der Heijden G et al. Mg and Ca uptake by roots in relation to depth and allocation to aboveground tissues: results from an isotopic labeling study in a beech forest on base-poor soil. *Biogeochemistry* 122, 375–393 (2015).
169. Schlesinger WH The formation of caliche in soils of the Mojave Desert, California. *Geochimica et Cosmochimica Acta* 49, 57–66 (1985).
170. Rose DA, Konukcu F & Gowing JW Effect of watertable depth on evaporation and salt accumulation from saline groundwater. *Soil Res* 43, 565 (2005).
171. Gran M et al. Dynamics of water vapor flux and water separation processes during evaporation from a salty dry soil. *Journal of Hydrology* 396, 215–220 (2011).
172. Yu L A global relationship between the ocean water cycle and near-surface salinity. *Journal of Geophysical Research: Oceans* 116, (2011).
173. Qu T, Gao S & Fukumori I What governs the North Atlantic salinity maximum in a global GCM? *Geophysical Research Letters* 38, (2011).
174. Milliman JD & Droxler AW Neritic and pelagic carbonate sedimentation in the marine environment: ignorance is not bliss 9.
175. Krissansen-Totton J & Catling DC A coupled carbon-silicon cycle model over Earth history: Reverse weathering as a possible explanation of a warm mid-Proterozoic climate. *Earth and Planetary Science Letters* 537, 116181 (2020).
176. Von Damm KL et al. Chemistry of submarine hydrothermal solutions at 21 °N, East Pacific Rise. *Geochimica et Cosmochimica Acta* 49, 2197–2220 (1985).
177. Elderfield H & Schultz A Mid-Ocean Ridge Hydrothermal Fluxes and the Chemical Composition of the Ocean. *Annu. Rev. Earth Planet. Sci* 24, 191–224 (1996).
178. Lake RA & Lewis EL Salt rejection by sea ice during growth. *Journal of Geophysical Research (1896–1977)* 75, 583–597 (1970).
179. Dickson RR & Brown J The production of North Atlantic Deep Water: Sources, rates, and pathways. *Journal of Geophysical Research: Oceans* 99, 12319–12341 (1994).

180. Worster MG & Rees Jones DW Sea-ice thermodynamics and brine drainage. *Philosophical Transactions of the Royal Society A: Mathematical, Physical and Engineering Sciences* 373, 20140166 (2015).
181. Wells AJ, Wettlaufer JS & Orszag SA Brine fluxes from growing sea ice. *Geophysical Research Letters* 38, (2011).
182. Wakatsuchi M & Ono N Measurements of salinity and volume of brine excluded from growing sea ice. *Journal of Geophysical Research: Oceans* 88, 2943–2951 (1983).
183. Gherardi J-M et al. Evidence from the Northeastern Atlantic basin for variability in the rate of the meridional overturning circulation through the last deglaciation. *Earth and Planetary Science Letters* 240, 710–723 (2005).
184. Wagenet RJ Principles of Salt Movement in Soils. in *Chemical Mobility and Reactivity in Soil Systems* 123–140 (John Wiley & Sons, Ltd, 1983). doi:10.2136/sssaspecpub11.c9.
185. Howe JA & Smith AP 2 - The soil habitat. in *Principles and Applications of Soil Microbiology (Third Edition)* (eds. Gentry TJ, Fuhrmann JJ & Zuberer DA) 23–55 (Elsevier, 2021). doi:10.1016/B978-0-12-820202-9.00002-2.
186. Danielsen SW & Kuznetsova E Environmental Impact and Sustainability in Aggregate Production and Use. in *Engineering Geology for Society and Territory - Volume 5* (eds. Lollino G et al.) 41–44 (Springer International Publishing, 2015). doi:10.1007/978-3-319-09048-1_7.
187. Langer William H.. Potential Environmental Impacts of Quarrying Stone in Karst— A Literature Review (2001).
188. Raymond PA & Oh N-H Long term changes of chemical weathering products in rivers heavily impacted from acid mine drainage: Insights on the impact of coal mining on regional and global carbon and sulfur budgets. *Earth and Planetary Science Letters* 284, 50–56 (2009).
189. Fookes PG, Gourley CS & Ohikere C Rock weathering in engineering time. *Quarterly Journal of Engineering Geology* 21, 33–57 (1988).
190. Kaonga CC, Kosamu IBM & Utembe WR A Review of Metal Levels in Urban Dust, Their Methods of Determination, and Risk Assessment. *Atmosphere* 12, 891 (2021).
191. Tegen I, Lacis A & Fung I The influence on climate forcing of mineral aerosols from disturbed soils. *Nature* 380, 419–422 (1996).
192. Abuduwaili J, Gabchenko MV & Junrong X Eolian transport of salts—A case study in the area of Lake Ebinur (Xinjiang, Northwest China). *Journal of Arid Environments* 72, 1843–1852 (2008).
193. Willison MJ, Clarke AG & Zeki EM Chloride aerosols in central northern England. *Atmospheric Environment* (1967) 23, 2231–2239 (1989).
194. Grillo A, Salvi L, Coruzzi P, Salvi P & Parati G Sodium Intake and Hypertension. *Nutrients* 11, 1970 (2019). [PubMed: 31438636]
195. Sahu OP & Chaudhari PK Review on Chemical treatment of Industrial Waste Water. *Journal of Applied Sciences and Environmental Management* 17, 241–257 (2013).
196. Yakirevich A et al. Modeling the impact of solute recycling on groundwater salinization under irrigated lands: A study of the Alto Piura aquifer, Peru. *Journal of Hydrology* 482, 25–39 (2013).
197. Schlesinger WH Some thoughts on the biogeochemical cycling of potassium in terrestrial ecosystems. *Biogeochemistry* 154, 427–432 (2021).
198. Hinckley E-LS, Crawford JT, Fakhraei H & Driscoll CT A shift in sulfur-cycle manipulation from atmospheric emissions to agricultural additions. *Nat. Geosci* 13, 597–604 (2020).
199. Page KL et al. Processes and magnitude of CO₂, CH₄, and N₂O fluxes from liming of Australian acidic soils: a review. *Soil Res* 47, 747–762 (2009).
200. Thorslund J & van Vliet MTH A global dataset of surface water and groundwater salinity measurements from 1980–2019. *Sci Data* 7, 231 (2020). [PubMed: 32661286]
201. United Nations Environment Programme. GEMStat database of the Global Environment Monitoring System for Freshwater (GEMS/Water) Programme (2018).
202. Environment and Climate Change Canada. National Long-term Water Quality Monitoring Data (2022).
203. U.S. Geological Survey. National Water Information System (USGS Water Data for the Nation) (2021).

Box 1 The Shifting Balance of the U.S. Salt Budget

EPA Author Manuscript

EPA Author Manuscript

EPA Author Manuscript

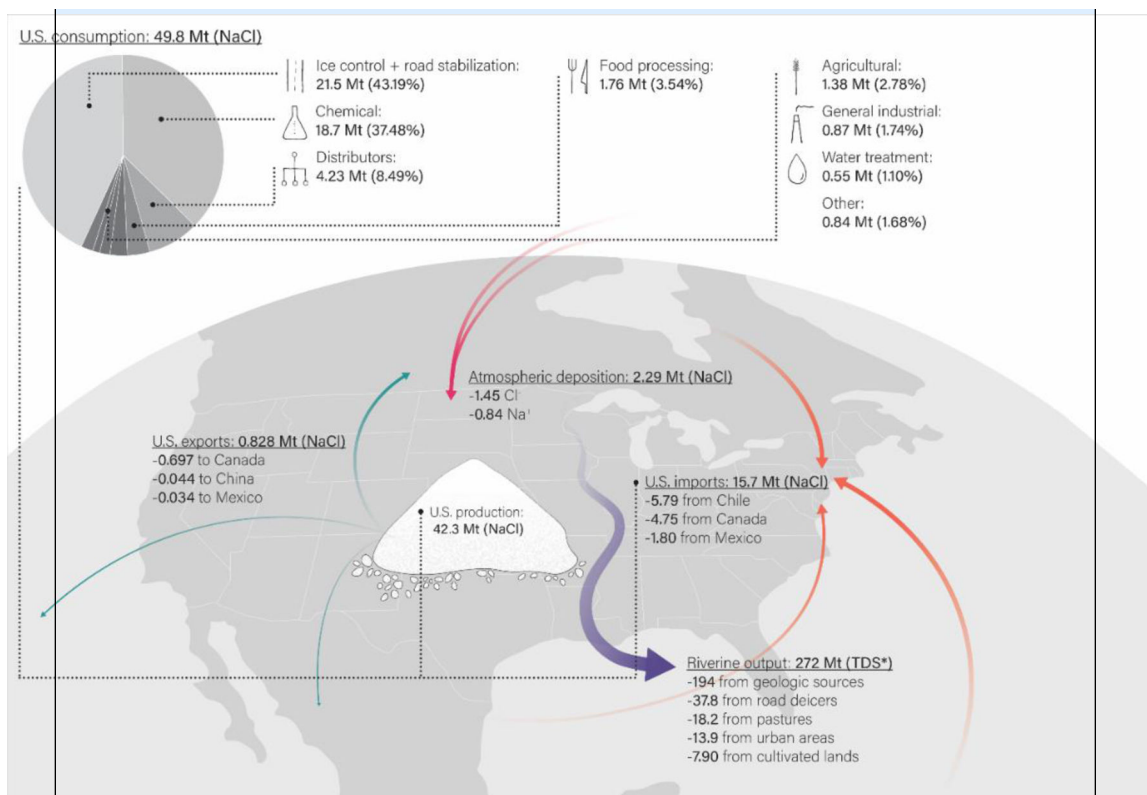


Figure 5 (Box 1).

A salt budget for the continental United States illustrating major natural and anthropogenic fluxes. The annual average NaCl production, consumption, imports, exports, and atmospheric deposition between 2013 and 2017, as well as riverine outputs of total dissolved solids (TDS) indicated by * in the continental United States, reported in million metric tons (Mt)². Data on production, consumption, imports, and exports were obtained from the United State Geological Survey (USGS) Annual Minerals Yearbook⁸². Atmospheric deposition values were interpolated and estimated from Kaushal et al. (2021)^{2,8}.

In the continental USA, anthropogenic salt fluxes are within similar orders of magnitude as salt fluxes from atmospheric deposition and riverine transport² (see the figure), based on values reported in the US Geological Survey (USGS) annual Minerals Yearbook⁶⁶. Atmospheric deposition values were interpolated and estimated from Anning and Flynn² and Kaushal et al.⁸.

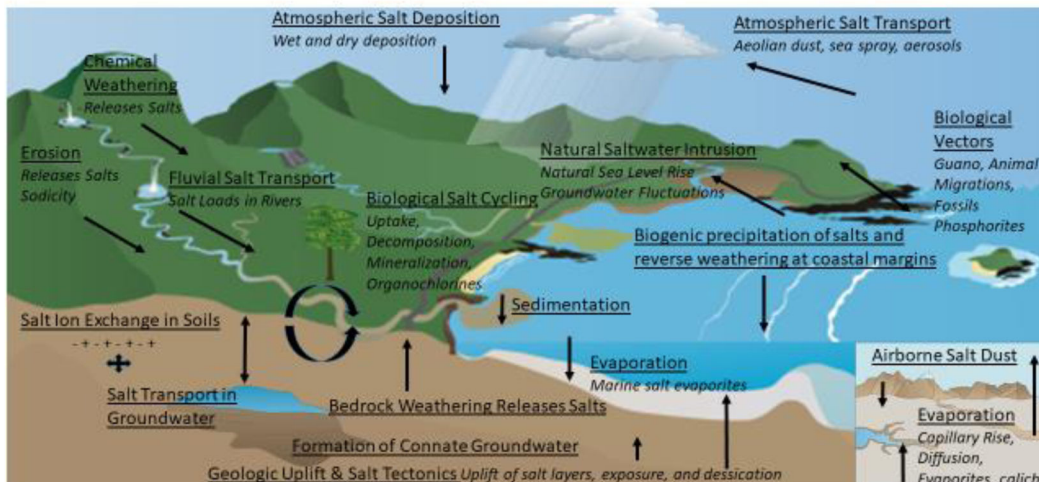
Increased salt use in the USA impacts salt fluxes in streams and rivers. Approximately 271.9 Mt of total dissolved solids are transported to streams within the USA, with 71.4% originating from geologic sources, 13.9% originating from road deicers, 6.7% originating from pastures, 5.1% originating from urban areas and 2.9% originating from cultivated lands². Road salt use increased rapidly after 1990 in the USA, as road deicers began replacing sand use, and road salt use has increased with increasing impervious surface cover over time¹⁸². Road salting is now a major use of salt in colder climates, accounting for approximately 44% of salt use in the USA between 2013 and 2017 (ref. 66).

Salt for chemical use increased rapidly until the 1970s in the USA, when there were plateaus and declines in manufacturing and certain industrial activities⁶⁶. In addition, environmental regulations such as US Federal Clean Air, Clean Water, and Safe Drinking Water Acts were passed in the 1970s, leading to fundamental shifts in the uses and disposal of industrial chemicals across the USA^{183,184}. Wastewater is also an important (and overlooked) source of salinization missing from previous estimates and budgets; chemicals used in wastewater and water treatment (for pH adjustment, chlorination, dechlorination and odour control) can account for almost 8% of the Na⁺ entering a drinking water reservoir whereas the contribution of wastewater effluent to total Na⁺ mass loading entering that same drinking water reservoir can be approximately 60–80% during dry weather¹².

The relative importance of riverine salt fluxes and anthropogenic salt consumption in the USA is estimated and compared here. Assuming similar concentrations to global averages for unpolluted freshwaters¹⁸⁵, NaCl is approximately 7.2% of the majority of total dissolved solids (6.71/93.71 mg l⁻¹)¹⁸⁵, suggesting a flux of 19.59 Mt (based on a total dissolved solid flux of 272 Mt). From 2013 to 2017, average US NaCl consumption and use (agriculture, industry and road salt, for example) is 49.8 Mt; therefore, riverine fluxes are equivalent to approximately 39% of NaCl consumption and use in the USA. While acknowledging uncertainties, these values conservatively suggest that NaCl transport in rivers can be within the same order of magnitude as anthropogenic salt use in the USA. As salts are stored in the subsurface (for example, as legacy pollution), riverine exports of non-geologic salts could be less than all inputs in some cases.

However, river outputs could be over or underestimated, and this example is missing inputs from natural geologic sources and internal sources from vertical groundwater transport. Irrigation is also not shown, which is a major driver of salinization in some river basins in the USA such as the Colorado River. Ultimately, quantifying the anthropogenic salt cycle in biogeochemical budgets is a difficult but urgent problem¹⁸⁶.

THE NATURAL SALT CYCLE: SOURCES, TRANSPORT, AND STORAGE



THE ANTHROPOGENIC SALT CYCLE: SOURCES AND SALINIZATION PROCESSES

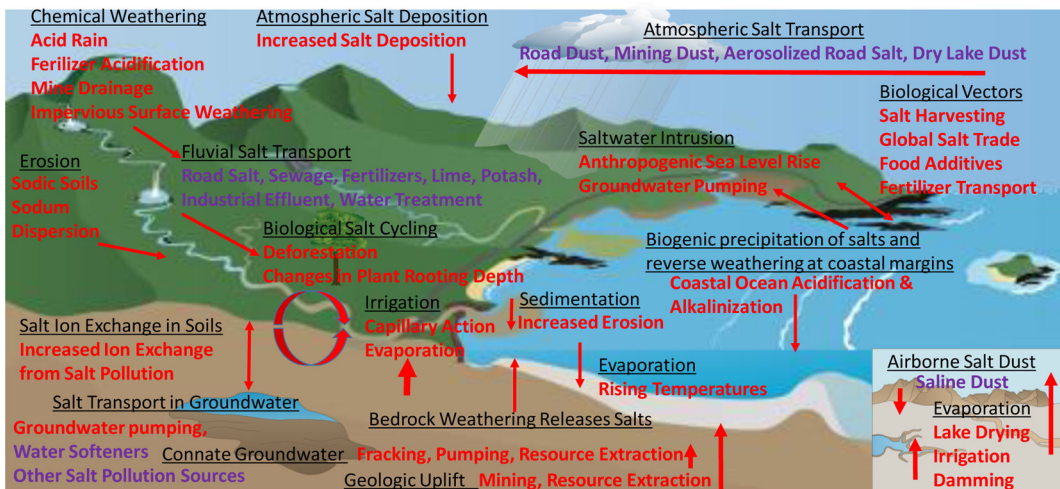


Figure 1.
 a, The natural salt cycle is characterized by a balance in uplift of salts to the surface of the Earth and weathering and transport of salts to the oceans. Salinization is a natural process in many dryland environments (inset). b, The anthropogenic salt cycle is characterized by accelerated transport of salts to the surface of the Earth by mining and resource extraction, increased fluxes of salt to the atmosphere from saline dust, and increased soil salinity and evaporite formation owing to desiccation (inset). Anthropogenic sources of salts exceed natural sinks, with a wide variety of geological, chemical, biological, engineering and hydrological processes contributing to human alteration of the global salt cycle.

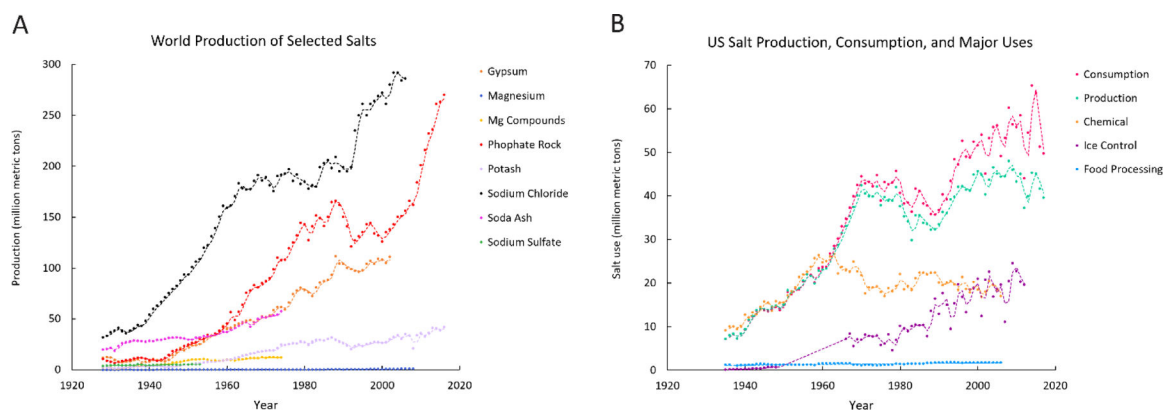


Figure 2. Salt production and consumption trends.

a, Rising trends in global production of salts since 1929, as reported by the USGS⁶⁶. b, Rising NaCl production (defined as the quantity of salt mined or manufactured that is available for sale) and consumption (defined as the quantity of salt sold or used, plus imports, minus exports) in the USA, with major uses of consumption shown⁶⁶.

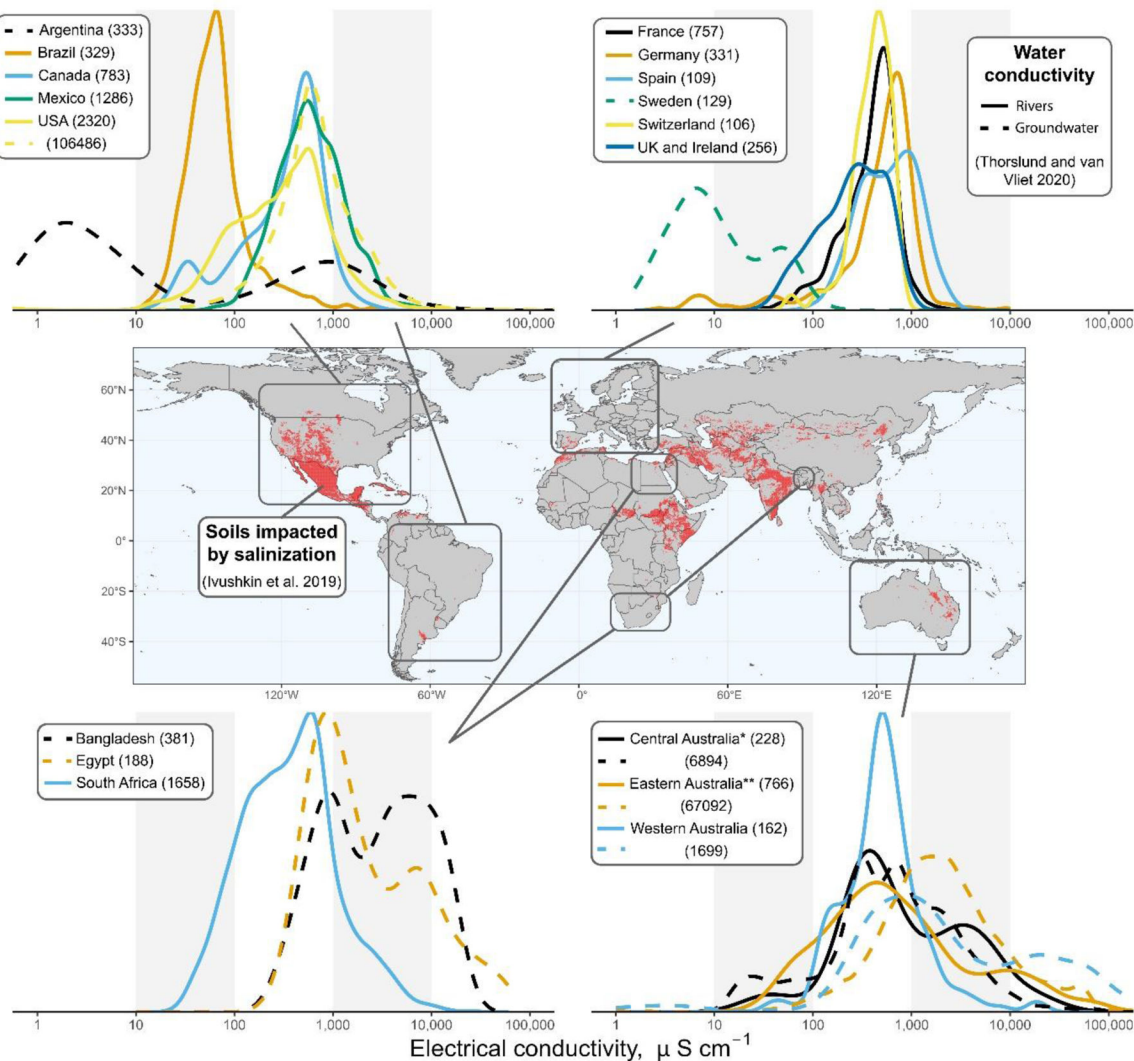


Figure 3. Global heterogeneity in environmental salinity. a, Soils impacted by anthropogenic salinization (red-shaded areas) to at least some degree as of 2016 (ref. 93). b–e, Probability density plots showing the distributions of riverine (solid line) or groundwater (dashed line) freshwater conductivity values among countries or regions with ≥ 100 sites from an open-access global database of observations made over the past four decades (178). Note that Eastern Australia includes Queensland, New South Wales, Victoria, Australian Capital Territory and Tasmania. Central Australia includes South Australia and Northern Territory. Electrical conductivity in water often serves as an easily measured proxy for total salinity in freshwater. Distributions reflect mean readings drawn from disparate river and stream or groundwater sampling locations from within each country or region. Coastal sites were omitted from distributions. Country or region site sample sizes are provided in the density plot legends.

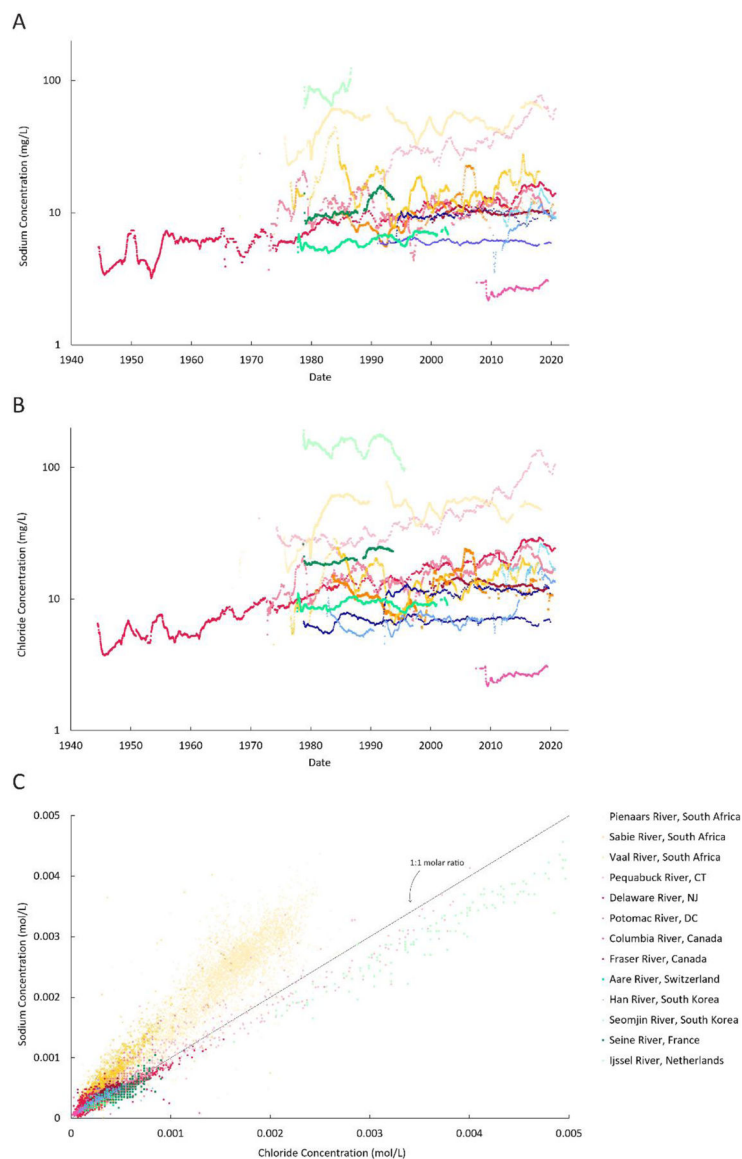


Figure 4. Sodium and chloride concentrations in rivers. a,b, Rising trends in concentrations of Na^+ and Cl^- salt ions in select world rivers. c, Deviations in $\text{Na}^+:\text{Cl}^-$ molar ratios from 1:1 (refs. 179–181) (indicated by dashed line). Variations $\text{Na}^+:\text{Cl}^-$ molar ratios reflect variations in the sources, transport and transformation of salt ions across climate, geology, human activities, flowpaths and time. Rivers draining semiarid and arid regions with more sodic soils can have higher $\text{Na}^+:\text{Cl}^-$ molar ratios whereas rivers draining humid regions have lower relative $\text{Na}^+:\text{Cl}^-$ molar ratios owing to road salt (and other pollution sources) and greater retention of Na^+ on soil ion exchange sites compared with Cl^- . Data from the Global Freshwater Quality Database GEMStat.

Table 1.

Some examples of major processes and fluxes in Earth’s natural salt cycle. Salinization can be a natural process, particularly in dryland environments. Salt is brought to soil surfaces through evaporation, capillary action, and diffusion in dryland soils. Salts in dust, sea spray, and aerosols become airborne and transported through the atmosphere before deposition onto Earth’s surface. Weathering increases the dissolution of rocks and increases the transport of salts in runoff. Salts can be taken up and stored in biological pools. However, a significant fraction of salt ions can infiltrate into soils and groundwaters, where salt ions undergo ion exchange. Fluvial transport of salts to coastal margins can lead to sedimentation, biogenic precipitation of salts, and reverse weathering at coastal margins. Evaporation of sea water can lead to the formation of evaporites. Salts, evaporite layers, and comate groundwaters can be exposed at Earth’s surface by weathering. Salt layers formed or deposited deeper within the Earth are brought to the surface by salt tectonics, uplift, exposure, and dessication. Natural saltwater intrusion can bring salts from marine environments back into freshwaters.

Processes	Flux Directions	Descriptions of Fluxes	Examples of Rates
Geological uplift	Lithosphere -> Lithosphere	Rock units including salt layers, which form diapirs, slowly rise to Earth’s surface ³⁶⁻⁴⁰ .	Uplift velocity ranges from 0.1 to 10 mm year ⁻¹ ^{38,40,158,159} .
Chemical weathering	Lithosphere -> Hydrosphere	Evaporites dissolve from chemical weathering ^{54-56,58,59} . Base cations are liberated <i>via</i> weathering of silicate and carbonate rocks (bedrock) ⁵² .	Cation weathering (Na ⁺ , K ⁺ , Ca ²⁺ , Mg ²⁺) from silicates is 200 * 10 ⁶ tonnes yr ⁻¹ globally. Total dissolved solids from evaporites is 290 * 10 ⁶ tonnes yr ⁻¹ globally ⁵² .
Atmospheric transport and deposition	Lithosphere -> Pedosphere	Salts in mineral soils primarily come from the breakdown of rocks and minerals, including carbonates and feldspars ^{41,42} .	Soil Production Rate ranges between 0.1 and 594 mm kyr ⁻¹ , with a mean of 67 mm kyr ⁻¹ and median of 27 mm kyr ⁻¹ ¹⁶⁰ .
	Pedosphere -> Hydrosphere	Weathering of soil minerals releases major ions.	Weathering rates can be 0.005 to 11 keq ha ⁻¹ yr ⁻¹ ⁴⁵ .
	Lithosphere and Pedosphere -> Atmosphere	Dust is mobilized from dry areas globally including arid soils, dried lake beds, and salt flats.	735 to 8186 Tg dust yr ⁻¹ ¹⁶¹ . On an areal basis, global dust deposition ranges from ~0 to >450 g m ⁻² yr ⁻¹ , but are typically <1 g m ⁻² yr ⁻¹ ³³ .
Biological uptake and release	Hydrosphere -> Atmosphere	Sea spray is the primary source of aerosolized atmospheric salts ²⁸ .	Sea spray aerosol mass is about 3-70 * 10 ¹² kg yr ⁻¹ globally ¹⁶² . Global sea salt aerosol deposition is about 1-3 * 10 ¹⁶ g yr ⁻¹ ³¹ .
	Atmosphere -> Lithosphere, Pedosphere, Hydrosphere	Salts can be deposited through wet or dry deposition ²⁸⁻³⁰ .	In the U.S., atmospheric deposition ranges from: 0 - 5 kg ha ⁻¹ of Na ⁺ , 0 - 3 kg ha ⁻¹ of Ca ²⁺ , 0 - 1 kg ha ⁻¹ of Mg ²⁺ , 0 - 10 kg ha ⁻¹ of Cl ⁻ , 0 - 24 kg ha ⁻¹ of SO ₄ ¹⁶³ .
	Atmosphere -> Cryosphere	Dust, including Na ⁺ and Ca ²⁺ , deposits on snow and ice. Snow and ice deposition can accelerate snowmelt ³⁵ .	Less than 0.05 g m ⁻² yr ⁻¹ ³² .
Evaporation and transpiration	Pedosphere, Lithosphere, Hydrosphere <-> Biosphere	Plants, fungi, and other biological organisms take up salt ions, depending on their nutrient needs and salt stress ^{29,43-48} . Salt ions can be released from organisms to soils and waters (such as through processes such as decomposition) ^{29,164,165} and soil organochlorine formation ^{30,44,166} .	Unknown globally, see examples at local and regional scales ^{29,44,164,165,167,168}
	Hydrosphere -> Lithosphere	Solar evaporation leads to increased salt concentrations in marine and non-marine waterways, from which minerals can precipitate and form evaporitic rocks.	Approximately mm to cm of evaporite thickness accumulate yr ⁻¹ ⁵⁹ .

Processes	Flux Directions	Descriptions of Fluxes	Examples of Rates
	Hydrosphere -> Pedosphere	Evaporation and plant transpiration pull groundwater towards the surface via capillary action, accumulating salts in soils.	Unknown on global scale, see examples at local and regional scales ¹⁶⁹⁻¹⁷¹
	Hydrosphere -> Hydrosphere	When evaporation exceeds precipitation, salinity increases in ocean water ^{172,173} and groundwater ⁶⁴ .	Up to 0.3 psu month ⁻¹ ¹⁷² .
Mineral precipitation	Biosphere, Hydrosphere -> Lithosphere	Many salt ions can form mineral precipitates and we give calcite as an example. Most modern calcium carbonate is formed through biological processes ⁷⁰ .	As an example of mineral precipitation, ~32 * 10 ¹² mol of CaCO ₃ yr ⁻¹ accumulates globally ¹⁷⁴ .
Reverse weathering	Hydrosphere -> Lithosphere	Reverse weathering controls major ion ratios and alkalinity in sea water through the deposition of silica minerals involving divalent cations, primarily forming clays ⁷¹⁻⁷³ .	The reverse weathering reaction coefficient varies between 4*10 ⁻⁶ to 10 ⁻¹⁰ μmol cm ⁻³ s ⁻¹ ¹⁷⁵ .
Hydrothermal circulation	Hydrosphere -> Hydrosphere, Lithosphere	In locations of high heat flow, such as rift valleys and subduction zones, the water in seawater is turned to vapor and expelled, increasing brine salinity until salt precipitates ^{64,74,75} . Processes occurring at hydrothermal vents can also be a sink for some elements, such as Mg ²⁺ , while other elements are enriched ^{176,177} .	The chemical fluxes of hydrothermal vent fluid of salt ions vary from a sink of 1.6 * 10 ¹² mol Mg ²⁺ yr ⁻¹ to a source of 2.3-6.9 * 10 ¹¹ mol K ⁺ yr ⁻¹ ¹⁷⁷ .
Brine rejection	Cryosphere -> Lithosphere	When sea ice forms, salt is rejected from the ice, increasing salt concentrations and forming brines in oceanic water ¹⁷⁸⁻¹⁸³ .	Salt flux from brine rejection has been observed at 6.4 * 10 ⁻⁷ to 1.5 * 10 ⁻⁶ g cm ⁻² s ⁻¹ ¹⁸² .
Saltwater intrusion	Hydrosphere -> Hydrosphere	Natural mechanisms leading to salt water intrusion include: tidal fluctuations, long term climate change/marine transgression, flooding, and salt aerosol inputs through rain ^{41,42,64,67,68} .	On a global scale, natural rates are variable depending on the process ^{67,68} .
Connate fluid mixing	Lithosphere -> Hydrosphere	Connate fluid is a very salty water that is trapped within rock during formation. However, eventually the fluid will migrate and can lead to salinized groundwater ⁶⁰⁻⁶⁴ .	Rates vary naturally based on uplift/erosion rates, rock permeability, glacial/interglacial cycles ⁶⁰⁻⁶³ .
Soil ion exchange and transport	Pedosphere -> Pedosphere	Cation exchange is a key process that dictates how salts are stored and transported in soils. Salt migration in soils typically follows a convective or diffusive pattern ^{29,42,49,51,184} .	Cation exchange capacities vary from <10 to 300 cmol charge kg ⁻¹ , depending on the soil material ¹⁸⁵ .
Hydrological transport	Hydrosphere -> Hydrosphere	The hydrological cycle is a key transporter of salt ions. The largest flux is from rivers to oceans ^{19,52} , although transport also happens within groundwater ³⁰ .	Yields range from 0.60 to 4.04 g m ⁻² basin area yr ⁻¹ , depending on the ion ¹⁹ .

Table 2.

Some examples of processes and fluxes in Earth's anthropogenic salt cycle. A growing research need is to identify and quantify perturbations to sources, fluxes, transport and transformations within the anthropogenic salt cycle.

Examples of Anthropogenic Processes	Examples of Flux Directions	Examples of Anthropogenic Fluxes	Examples of Rates and Magnitudes	Examples of Potential Implications
Uplift from mining	Lithosphere -> Pedosphere	Potash for agricultural production is mined or evaporated from salt lakes and subsurface brines ¹⁰¹ .	39.55 million metric tons extracted worldwide in 2014 ⁴ .	With waste to usable potash ratios upwards of 3:1, nearby freshwater rivers and streams are subject to high-salt runoff, which can alter river ecosystems ⁴ .
	Lithosphere -> Technosphere	Mining of salt rich materials for the built environment (such as limestone and dolomite) ¹⁰⁵ .	22 billion tons extracted globally yr ⁻¹ ¹⁸⁶ .	Noise, dust, pollution; decline in biodiversity; lower water table ¹⁸⁷ ; depletion of resources ¹⁸⁶ .
	Lithosphere -> Hydrosphere	Mountaintop mining releases salt ions in bedrock, including Ca ²⁺ , Mg ²⁺ , K ⁺ , Na ⁺ , Cl ⁻ , HCO ₃ ⁻ , SO ₄ ²⁻ ¹¹⁰ .	Dissolved solids exported downstream from mined catchments at a rate of ~7600 kg ha ⁻¹ yr ⁻¹ ¹¹⁰ .	Predicted increases in coal mining over the next century ¹⁸⁸ may cause an increase in fluxes of ions exported from mines to downstream catchments.
Human-accelerated weathering	Technosphere -> Hydrosphere, pedosphere	Weathering of the built environment ¹⁰⁷ causes dissolution, honeycomb weathering, weathered rims and rinds, spalling, and corrosion ¹⁰⁷ .	0.0009 – 1.32 mm yr ⁻¹ on average ¹⁸⁹	Increased major ions and pH levels impact aquatic life and infrastructure ¹⁰⁶ .
Atmospheric transport and deposition	Technosphere -> Atmosphere, biosphere	Atmospheric deposition from industry, coal combustion, traffic emissions, wear of asphalt, agriculture, and wildfires ^{98,190} .	Base cation fractions of mineral dust mass are: Ca ²⁺ : 2.4%, K ⁺ : 1.5%, Na ⁺ : 1.2%, Mg ²⁺ : 0.9% ⁹⁸ .	Urban dust can increase risk of pulmonary toxicity and cancers via inhalation, ingestion, and dermal contact; also correlated to declines in invertebrate populations
	Pedosphere, Lithosphere -> Atmosphere	Atmospheric dust transport from farming, grazing, water use, urban development ^{24,25,93-95,191,192} .	Estimates range from small compared to natural sources ²⁴ to 50 +/- 20% of atmospheric dust mass ¹⁹¹ .	Increased aeolian transport can increase rates of soil erosion, salt deposition, groundwater salinization, ocean and stream sedimentation, climate change, disease transmission, air pollution, and drinking water contamination ⁹⁵ .
	Hydrosphere -> Atmosphere	Aerosolization of road salts, primarily Na ⁺ and Cl ⁻ during winter months ⁹⁶ .	During winter months, there is a four-to-five-fold increase in daily average concentration of Cl ⁻ aerosols ¹⁹³ .	Increased Na ⁺ and Cl ⁻ concentrations occur during winter.
Wastewater and industrial discharges and water treatment	Technosphere -> Hydrosphere, Pedosphere	Salt ions, including Ca ²⁺ , Mg ²⁺ , K ⁺ , Na ⁺ , Cl ⁻ , and SO ₄ ²⁻ in household products and cleaning supplies can be released into domestic wastewater and into streams and landfills.	Per household rates of release are: Ca ²⁺ : 11236 mg L ⁻¹ ; Cl ⁻ : 38768 mg L ⁻¹ ; K ⁺ : 18713.8 mg L ⁻¹ ; Mg ²⁺ : 3528 mg L ⁻¹ ; and Na ⁺ : 90629 mg L ⁻¹ ¹¹⁸ .	Adoption of treatment upgrades, such as reverse osmosis systems, to remove salts increases the carbon footprint of water treatment and creates additional issues with respect to brine disposal ¹¹ .
	Hydrosphere -> Technosphere -> Biosphere	Salts are taken up by humans through consumption of food and beverages and released into domestic wastewater through excretion.	Average consumption of Na ⁺ day ⁻¹ per person in the USA is 3400–4000 mg day ⁻¹ ; Average excretion of Na ⁺ is 3414–3803 mg day ⁻¹ ^{116,117} .	High-salt diets increase risk of hypertension and high blood pressure ¹⁹⁴ .

Examples of Anthropogenic Processes	Examples of Flux Directions	Examples of Anthropogenic Fluxes	Examples of Rates and Magnitudes	Examples of Potential Implications
	Technosphere -> Hydrosphere	Salt ions from industrial plants are released from into water bodies.	Average Na ⁺ load discharged from a microfabrication facility is ~1000 kg day ⁻¹ 11.	Stringent pre-treatment requirements for industrial effluent discharges should be developed and enforced11.
	Hydrosphere -> Hydrosphere, Biosphere	Na ⁺ and Cl ⁻ are added to water during conventional wastewater and drinking water treatment processes (e.g., softening, corrosion control, disinfection, coagulation).	Unknown globally, see examples at local and regional scales11,195. In the US, an average of 1.04 Mt NaCl were used for water treatment and conditioning annually between 2013 and 201792.	Increased salt ions in receiving waters, which can harm aquatic life and impact mobilization of contaminants from sediments to streams and rivers.
	Technosphere -> Hydrosphere	There are excess loads of major ions transported in rivers from wastewater discharges.	Per capita loads in urban sewage (kg cap ⁻¹ yr ⁻¹): 1.2–3.2 (Ca ²⁺), 0.65–1.5 (Mg ²⁺), 6.4–14 (Na ⁺), 1–2 (K ⁺), 6.3–15 (Cl ⁻), 5.8–13.5 (SO ₄ ²⁻), 14.5–24 (HCO ₃ ⁻)50.	Increased major ions in rivers from urban sewage discharges could influence pH, alkalinity84, and microbial processes such as nitrification and denitrification, P desorption84, and also pathogen survival20.
Road salting	Pedosphere -> Lithosphere -> Hydrosphere	Road salts can be transported (a) rapidly to streams through conduits, sub-surface piping, and preferential flowpaths; (b) diffusely through aquifers11; and (c) vertically as salt plumes through unsaturated zones and aquitards112.	Lateral salt transport in roadside soils at rate of 25–50 cm day ⁻¹ ; vertical salt transport at rate of 1.3–2.3 cm day ⁻¹ 103. Cl ⁻ mass input to aquifer at average rate of 30 g m ⁻² year ⁻¹ 112.	Higher baseline concentrations of Cl ⁻ in streams, wells, and aquifers. Sodic conditions in roadside soils weaken soil structure, causing colloidal dispersion and accelerated adsorption-dispersion reactions104.
Agriculture	Hydrosphere -> Pedosphere, Hydrosphere	Irrigation causes evaporative concentration of salts in soil water, increasing salts in soils and groundwater64. Irrigation can raise the water table bringing saline groundwater towards the surface64,83.	Depending on the irrigation method, groundwater total dissolved solids can increase at rates ranging from 3–5 to 15–17 mg L ⁻¹ yr ⁻¹ 196.	Increased soil salinity can lead to crop yield reductions between 10–25% in salt-sensitive species83.
	Technosphere -> Pedosphere, Hydrosphere	Fertilizer application, including potash, increases salts (such as K ⁺ , Cl ⁻ , and SO ₄ ²⁻) in soils and salt export to waterways102,197,198.	Globally ~32.2 Tg K ⁺ yr ⁻¹ and ~70 Tg S yr ⁻¹ are applied through fertilizer (Schlesinger 2021; Hinckley et al., 2022). Watershed Cl ⁻ inputs from potash are around 49 kg ha ⁻¹ yr ⁻¹ 102.	Increased S and salinity change pH, acid-base status, alkalinity, and buffering capacity, and can lead to methyl mercury production102.
	Technosphere -> Pedosphere, Hydrosphere	Aglime application adds HCO ₃ ⁻ , Ca ²⁺ , and Mg ²⁺ to soils, part of which is transported to waterway87,199.	In the USA in 2018, 86 thousand metric tons of lime was sold or used as fertilizer or aglime82.	Aglime application increases pH, emits CO ₂ , and influences downstream carbonate precipitation87,199.
Anthropogenic riverine transport to oceans	Pedosphere -> Lithosphere -> Hydrosphere	Increased concentrations of major ions in streams and rivers have been documented over the past 50 years on continental and global scales8,16,108,109.	In 1970, estimated anthropogenic salt inputs to the ocean were (in 10 ⁶ yr ⁻¹): 47 Ca ²⁺ , 10.5 Mg ²⁺ , 78 Na ⁺ , 5 K ⁺ , 93 Cl ⁻ , 124 SO ₄ ²⁻ , and 100 (HCO ₃ ⁻)19.	DIC, Ca ²⁺ , and Mg ²⁺ influence alkalinity and pH, CO ₂ emissions, desorption of P from sediments, toxicity of metals, and the ability of rivers to neutralize coastal ocean acidification108.