

# UC Davis

## UC Davis Previously Published Works

### Title

Temperature and time-dependent effects of delayed blood processing on oxylipin concentrations in human plasma.

### Permalink

<https://escholarship.org/uc/item/5x96w79h>

### Authors

Ramsden, Christopher  
Yuan, Zhi-Xin  
Horowitz, Mark  
et al.

### Publication Date

2019-11-01

### DOI

10.1016/j.plefa.2019.09.001

Peer reviewed



# HHS Public Access

Author manuscript

*Prostaglandins Leukot Essent Fatty Acids*. Author manuscript; available in PMC 2022 May 23.

Published in final edited form as:

*Prostaglandins Leukot Essent Fatty Acids*. 2019 November ; 150: 31–37. doi:10.1016/j.plefa.2019.09.001.

## Temperature and time-dependent effects of delayed blood processing on oxylipin concentrations in human plasma

Christopher E. Ramsden<sup>1,2,3,\*</sup>, Zhi-Xin Yuan<sup>1</sup>, Mark S. Horowitz<sup>1</sup>, Daisy Zamora<sup>1</sup>, Sharon F. Majchrzak-Hong<sup>2</sup>, Beverly S. Muhlhausler<sup>3</sup>, Ameer Y. Taha<sup>4</sup>, Maria Makrides<sup>3,5</sup>, Robert A. Gibson<sup>3</sup>

<sup>1</sup>Laboratory of Clinical Investigation, National Institute on Aging, National Institutes of Health, Baltimore, Maryland, USA

<sup>2</sup>National Institute on Alcohol Abuse and Alcoholism, National Institutes of Health, Bethesda, Maryland, USA

<sup>3</sup>University of Adelaide, Adelaide, SA, Australia

<sup>4</sup>Department of Food Science and Technology, College of Agriculture and Environmental Sciences, University of California, Davis, California, USA

<sup>5</sup>South Australian Health and Medical Research Institute, Adelaide, SA, Australia

### Abstract

**BACKGROUND:** Oxidized derivatives of polyunsaturated fatty acids, collectively known as oxylipins, are labile bioactive mediators with diverse roles in human physiology and pathology. Oxylipins are increasingly being measured in plasma collected in clinical studies to investigate biological mechanisms and as pharmacodynamic biomarkers for nutrient-based and drug-based interventions. Whole blood is generally stored either on ice or at room temperature prior to processing. However, the potential impacts of delays in processing, and of temperature prior to processing, on oxylipin concentrations are incompletely understood.

**OBJECTIVE:** To evaluate the effects of delayed processing of blood samples in a timeframe that is typical of a clinical laboratory setting, using typical storage temperatures, on concentrations of representative unesterified oxylipins measured by liquid chromatography-tandem mass spectrometry.

**DESIGN:** Whole blood (drawn on three separate occasions from a single person) was collected into 5 mL purple-top potassium-EDTA tubes and stored for 0, 10, 20, 30, 60 or 120 minutes at room temperature or on wet ice, followed by centrifugation at 4°C for 10 minutes with plasma collection. Each sample was run in duplicate, therefore there were six tubes and up to

\*Corresponding author: Christopher E. Ramsden, chris.ramsden@nih.gov, 251 Bayview Boulevard, Room 08C216, Baltimore, MD 21224.

Declarations of interest: none

**Publisher's Disclaimer:** This is a PDF file of an unedited manuscript that has been accepted for publication. As a service to our customers we are providing this early version of the manuscript. The manuscript will undergo copyediting, typesetting, and review of the resulting proof before it is published in its final form. Please note that during the production process errors may be discovered which could affect the content, and all legal disclaimers that apply to the journal pertain.

six data points at each time point for each oxylipin at each condition (ice/room temperature). Representative oxylipins derived from arachidonic acid, docosahexaenoic acid, and linoleic acid were quantified by liquid chromatography tandem mass spectrometry. Longitudinal models were used to estimate differences between temperature groups two hours after blood draw.

**RESULTS:** We found that most oxylipins measured in human plasma in traditional potassium-EDTA tubes are reasonably stable when stored on ice for up to 2 hours prior to processing, with little evidence of auto-oxidation in either condition. By contrast, in whole blood stored at room temperature, substantial time-dependent increases in the 12-lipoxygenase-derived (12-HETE, 14-HDHA) and platelet-derived (thromboxane B2) oxylipins were observed.

**CONCLUSION:** These findings suggest that certain plasma oxylipins can be measured with reasonable accuracy despite delayed processing for up to two hours when blood is stored on ice prior to centrifugation. 12-lipoxygenase- and platelet-derived oxylipins may be particularly sensitive to post-collection artifact with delayed processing at room temperature. Future studies are needed to determine impacts of duration and temperature of centrifugation on oxylipin concentrations.

### Keywords

oxylipins; plasma; stability; blood processing; peroxidation

---

### Introduction

Oxidized derivatives of 18, 20, and 22 carbon polyunsaturated fatty acids, collectively known as oxylipins, are increasingly recognized as bioactive mediators with diverse roles in human physiology and pathology [1–3]. Oxylipins can be divided into three general functional classes: (1) autacoids are labile signaling molecules that act locally and are rapidly inactivated or degraded; (2) pathway precursors are intermediates in the biosynthetic pathway leading to generation of more labile, bioactive autacoids; and (3) inactivation products are downstream metabolic derivatives that are often more stable than their autacoid precursors [4]. Oxylipins in these three categories are increasingly being measured in plasma collected in clinical studies to investigate biochemical mechanisms mediating disease [5–8], and to assess for pharmacodynamic biomarkers of nutrient-based and drug-based [9–11] interventions.

Ideally, plasma oxylipin measurements provide an accurate representation of *in vivo* intravascular levels. However, the labile nature of oxylipins and related compounds presents unique challenges for accurate identification, quantitation, and interpretation of concentrations in human plasma and other tissues [12–15]. There is potential to generate artifact during each step of collection, transport, pre-processing delay, processing, storage, and/or analysis due to: (1) degradation, inactivation, or metabolic conversion, and (2) enzymatic and/or non-enzymatic biosynthesis from precursor fatty acids present in the specimen. The potential for post-collection oxidation may be especially pronounced in polyunsaturated fatty acids containing multiple 1,4-*cis,cis*-pentadiene structures, such as arachidonic acid (AA) and docosahexaenoic acid (DHA)(Fig. 1).

Post-collection artifact could likely be minimized by centrifuging immediately after the collection of whole blood, followed by immediate pipetting, and storing at  $-80^{\circ}\text{C}$  until analysis. Ideally, the storage duration will not be excessive and will be uniform among all samples. However, this ideal approach can be challenging to achieve in a clinical setting, where logistical factors often lead to substantial delays before processing and variations in the duration of storage at  $-80^{\circ}\text{C}$  before analysis. Following collection, whole blood can be cooled or maintained at room temperature prior to processing, sometimes for periods of several hours. Furthermore, details regarding the time interval between sample collection and processing are rarely reported in manuscripts or discussed as a limitation in papers.

The goal of this pilot project is to evaluate the effects of delayed processing of blood samples in a timeframe that is typical of a clinical setting, using a range of storage temperatures, on concentrations of representative oxylipins, pathway precursors, and inactivation products measured by liquid chromatography tandem mass spectrometry (LC-MS/MS).

## Methods

The study compares plasma levels of oxylipins in samples that were processed immediately after collection to those that were processed after up to 120 minutes of storage either on wet ice or at room temperature prior to centrifugation. The protocol was approved by NIH (#03-AG-N322) and written informed consent was obtained for all blood collection procedures. Following an overnight fast, venipuncture of the median cubital vein in the antecubital fossa was performed with an 18-gauge butterfly needle, with venous whole blood collected into 5 mL 'purple top' potassium-EDTA tubes. Whole blood was stored for 0, 10, 20, 30, 60 or 120 minutes at room temperature or on wet ice (Fig. 2), followed by centrifugation at  $4^{\circ}\text{C}$  and 1880g for 10 minutes.

Following centrifugation, plasma was carefully pipetted into an empty tube with care taken not to disturb the buffy coat. The entire experiment was repeated in three separate rounds on one subject, on three different dates. On each of the three experimental days, each sample was run in duplicate, therefore there were six tubes and up to six data points at each time point for each oxylipin at each condition (wet ice/room temperature).

### Quantitation of oxylipins in plasma

To quantify concentrations of lipid mediators in plasma, lipid extracts were purified using solid phase extraction (SPE) and quantified using LC-MS/MS as previously described [3]. Briefly, SPE of bioactive lipids from biological matrices was performed using Strata X cartridges (33  $\mu$ , 200 mg/6 mL, Phenomenex, PA). The cartridges were conditioned with 6 mL of methanol, followed by 6 mL of water before samples were extracted. Samples were washed with 6 mL of 10% methanol. The lipids were eluted with 6 mL of methanol into a glass tube containing 10  $\mu$ L of 30% glycerol in methanol. The eluate was evaporated to dryness under a stream of nitrogen and reconstituted with 40  $\mu$ L of methanol, and an aliquot (10  $\mu$ L) was injected into a UPLC (Shimadzu Scientific Instruments, Columbia, MD) system coupled with a Qtrap 5500 (AB SCIEX, USA) for quantitative analysis. Briefly, separation was performed on a ZorBAX RRHD Eclipse Plus C18 column (100 mm x 4 mm; 1.8  $\mu$ m)

(Agilent Corporation, Palo Alto, CA) consisting of (A) 12 mM ammonium acetate solution and acetic acid (100:0.02 v/v) and (B) 12 mM ammonium acetate and was composed of acetonitrile / water / acetic acid (90:10:0.02, v/v/v). The flow rate was 0.5 mL/min. The column oven temperature was set at 30 °C. The elution gradient conditions were as follows: 25–40% B from 0–2.0 min, 40–46% B from 2 to 8 min, 46–57% B from 8 to 9 min, 57–66% B from 9 to 20 min, 66–76% B from 20 to 22 min, 76–100% B from 22 to 27 min, held at 100% B from 27 to 33 min, 100–25% B from 33.1 to 35 min. The mass spectrometer was operated in electrospray negative ionization mode using scheduled multiple reaction monitoring (SMRM) acquiring MRM data for each analyte within a retention time window of 90s. The source parameters were set as follows: ion spray voltage, –4500 V; nebulizer gas (GS1), 65 psi; turbo-gas (GS2), 70 psi; and the turbo ion spray source temperature (TEM), 500 °C. The analytes were quantified using MRM, as previously described [3].

### Data analysis

To explore and graphically depict the effects of temperature and time on oxylipin concentrations, we plotted individual data points separately by temperature group, for oxylipins that were above the limit of quantitation in at least half of the samples. The limit of quantitation for each oxylipin was defined as a signal-to-noise ratio of >5. Oxylipin values that were below the limit of quantitation were imputed by substituting one half of the limit of quantitation value for each respective oxylipin. We hypothesized that TXB<sub>2</sub>, as a platelet derived mediator generated from TXA<sub>2</sub>, could be particularly sensitive blood clotting with delayed processing. TXB<sub>2</sub> values were above the LOQ in only 33% of samples, and had peaks present in only 53% of samples. Despite this, we included TXB<sub>2</sub> in these graphs and our analysis in an exploratory manner. We hypothesized that the differences between the treatments would increase over time and would be highest at the 120-minute measurement. To determine the between-group difference at minute 120, we used longitudinal mixed models for repeated measures controlling for the time, time by group interaction, and measurement round.

### Results

Temperature and time-dependent effects of delayed processing on the concentrations of sixteen oxylipins derived from AA, DHA and LA that were above the limit of quantitation in half or more of the study samples, plus TXB<sub>2</sub>, are shown in Figs. 3–5, respectively. Model predicted oxylipin estimates after 120 minutes of exposure to either wet ice or room temperature and between-group comparisons of wet ice to room temperature are shown in Table 1.

#### AA-derived oxylipins

Biosynthetic pathways for production of six AA-derived oxylipins (PGE<sub>2</sub>, 8-isoPGF<sub>2</sub>α, 5-HETE, 12-HETE, 15-HETE, TXB<sub>2</sub>) are shown in Figure 3A. Prostaglandin E<sub>2</sub> and 8-isoPGF<sub>2</sub>α were below the limit of quantitation in all samples. Since 8-isoPGF<sub>2</sub>α is generally considered to be an auto-oxidation product in humans [20], the finding that PGE<sub>2</sub> and 8-isoPGF<sub>2</sub>α remained below the limit of quantitation and did not differ between ice and room temperature, suggests that auto-oxidation likely did not occur to a substantial extent

in the conditions of this study. Concentrations of 12-HETE increased substantially over time in samples that had been stored at room temperature prior to processing (Fig. 3A), however these effects were not evident with delayed processing on wet ice. Since 12-HETE can be synthesized by platelet-derived 12-lipoxygenase, this increase suggests that alterations in platelet activation and the coagulation cascade occurred with delayed processing at room temperature [21–24]. Concentrations of TXB<sub>2</sub>, a more stable inactivation product of labile, bioactive platelet precursor TXA<sub>2</sub> [4] (Fig. 3A), also increased over time in samples that had been stored at room temperature prior to processing, however since TXB<sub>2</sub> was above the limit of quantitation in only 33% of samples, this finding should be interpreted with some caution. The concentrations of the other two measured AA-derived oxylipins biosynthesized by 5-lipoxygenase (5-HETE) and 15-lipoxygenase (15-HETE), did not change substantially over time and did not differ between the ice and room temperature groups.

### DHA-derived oxylipins

Biosynthetic pathways for production of five DHA-derived oxylipins (4-hydroxy-docoheptaenoic acid (4-HDHA), 10-HDHA, 14-HDHA, 17-HDHA and 19,20-epoxy-docosapentaenoic acid (19,20-EpDPA)) are shown in Figure 4A. Three of these oxylipins (4-HDHA, 10-HDHA, 19,20-EpDPA) appeared stable over time when stored on wet ice or at room temperature. 10-HDHA is generally considered to be an auto-oxidation product in humans because unlike rodents, humans lack 8-lipoxygenase [25]. Thus, the observation that plasma 10-HDHA did not change over time or differ between ice and room temperature, confirms a lack of substantial auto-oxidation in the conditions of this study. 14-HDHA, a 12-lipoxygenase generated product of DHA, increased substantially in the room temperature samples compared to wet ice, in a similar manner as observed for 12-HETE, suggesting that 12-lipoxygenase activation during clotting is not specific to one substrate. 17-HDHA values varied widely and appeared to be independent of time and temperature.

### LA-derived oxylipins

Proposed biosynthetic pathways for production of eight LA-derived oxylipins are shown in Figure 5A. Like 12-HETE (derived from AA) and 14-HDHA (derived from DHA), 9-HODE is reported to be a 12-lipoxygenase derivative of LA [26]. However, unlike 12-HETE and 14-HDHA, plasma 9-HODE concentrations were not significantly higher when whole blood was stored at room temperature compared to ice, for up to 2 hours. Potential explanations for this discrepancy include that 9-HODE can be synthesized via several other enzymatic and non-enzymatic sources including cyclooxygenases [27,28], 12-lipoxygenase (non-platelet), and free-radical mediated oxidation [29]. Moreover, AA and DHA contain three and five 1,4-*cis,cis*-pentadiene structures respectively (Figure 1), and therefore are considered to be more susceptible to oxidation compared to LA which contains a single 1,4-*cis,cis*-pentadiene structure.

## Discussion

Oxylipins hold promise as biomarkers for predicting diseases in observational settings and as pharmacodynamic markers for targeting diet or drug interventions [9,10]. Since plasma oxylipins are derived from more abundant polyunsaturated fatty acids containing 1,4-*cis,cis*-

pentadiene structures that are highly susceptible to oxidation, any pre-analytical variable that alters synthesis or degradation could potentially create post-collection artifact in measured metabolites [12, 16–18, 30], including oxylipins.

In the present study we sought to determine the effect of delayed processing of whole blood samples in a timeframe that is typical of a clinical setting, using typical storage temperatures on concentrations of unesterified oxylipins including pathway precursors, and inactivation products measured by LC-MS/MS. Findings suggest that the concentrations of many oxylipins measured in human plasma using traditional potassium-EDTA tubes are reasonably stable when stored for up to 2 hours prior to processing, particularly when stored on wet ice, with little evidence of auto-oxidation products in either condition. The substantial increases observed for 12-lipoxygenase-derived (12-HETE, 14-HDHA) and platelet-derived (TXB2) oxylipins with delayed processing at room temperature indicate that these compounds may be particularly sensitive to post-collection artifact. These findings suggest that certain plasma oxylipins can be measured with reasonable accuracy despite delayed processing for up to two hours following blood collection, as long as blood is stored on ice prior to centrifugation. The pronounced post-collection artifact in 12-lipoxygenase and platelet-derived oxylipins with delayed processing at room temperature could potentially be due to activation of clotting cascade [21,23,24].

Factors that limit the generalizability of this study include the small sample size, non-independent samples, and the substantial number of samples below the limits of quantitation. Experiments used standard clinical “purple top” potassium EDTA tubes for blood collection and therefore findings are not necessarily generalizable to blood collected using other tubes (i.e. plasma citrate, heparin) or for serum or other blood fractions. Use of heparin tubes has previously been reported to markedly increase oxylipin concentrations [31]. Since serum is generated via activation of the clotting cascade, one could speculate that use of serum separator tubes might alter the production of oxylipins derived from platelets (e.g. 12-HETE, 14-HDHA, thromboxanes) in a similar manner as observed with delayed processing at room temperature in the present study, however this requires experimental confirmation. The finding that oxylipins that were below the limit of quantitation with immediate processing were not increased with delayed processing suggests that the oxylipins profiled in the present study were not synthesized *ex vivo*. Importantly, some oxylipins have potent bioactions at very low concentrations, and it is possible that certain labile oxylipins were already degraded even with immediate processing. Future studies should examine whether more rapid centrifugation (e.g. 1–2 min) impacts results.

### Summary and conclusions

Plasma samples derived from whole blood that was kept on ice for up to 2 hours prior to centrifugation appear suitable for measuring many oxylipins with the caveats noted above. 12-lipoxygenase and platelet-derived oxylipins are sensitive to post-collection artifact with delayed processing at room temperature. Results may have implications for design, implementation, and interpretation of clinical studies measuring oxylipins in plasma. Future studies are needed to determine the impacts of other pre-analytical variables including



venipuncture location, needle gauge, blood collection tube type, duration and temperature of centrifugation, and post-processing storage conditions.

## Acknowledgements

Supported by the intramural programs of the National Institute on Aging and National Institute on Alcohol Abuse and Alcoholism National Institutes of Health, the University of Adelaide, the South Australian Health and Medical Research Institute, and the College of Agriculture and Environmental Sciences, University of California at Davis.

## References:

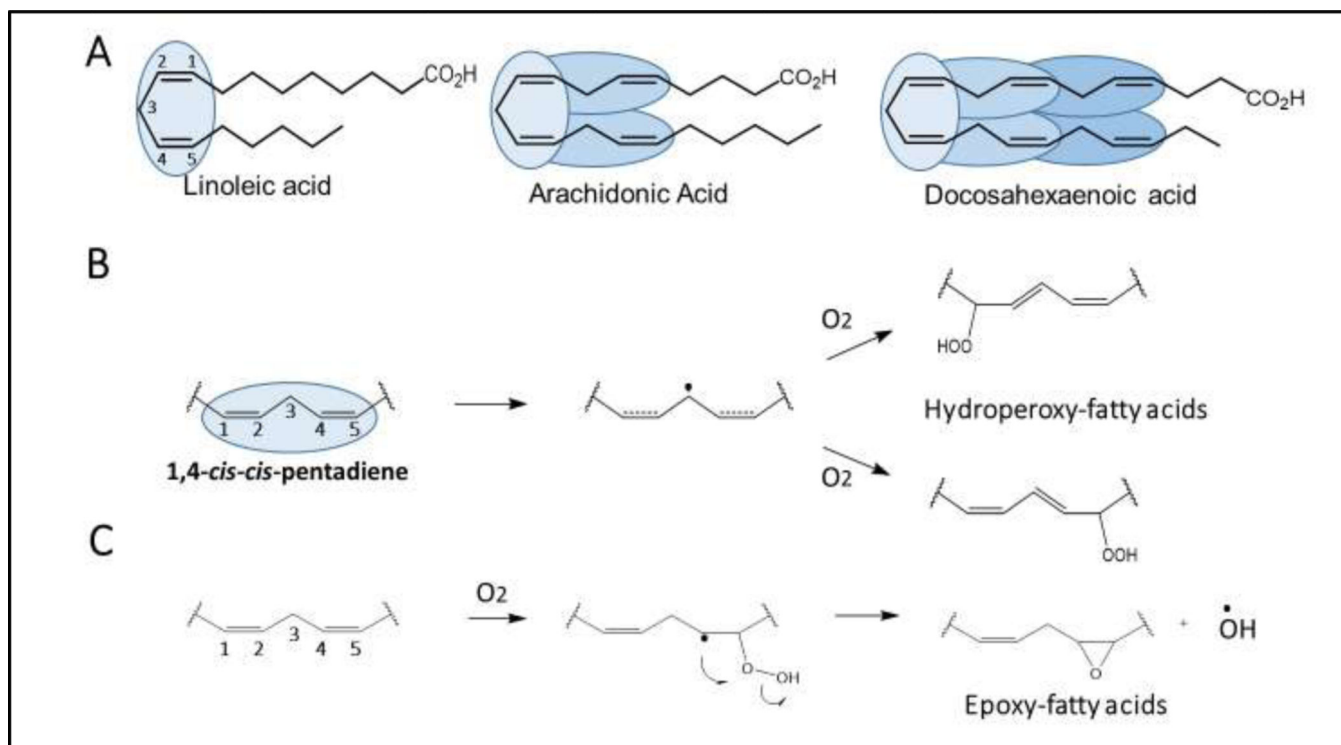
1. Caligiuri SPB, Parikh M, Stamenkovic A, Pierce GN, Aukema HM. Dietary modulation of oxylipins in cardiovascular disease and aging. *Am J Physiol Heart Circ Physiol*. 2017;313(5):H903–H118. [PubMed: 28801523]
2. Pazderka CW, Oliver B, Murray M, Rawling T. Omega-3 Polyunsaturated Fatty Acid Derived Lipid Mediators and Their Application in Drug Discovery. *Curr Med Chem*. 2018.
3. Yuan ZX, Majchrzak-Hong S, Keyes GS, Iadarola MJ, Mannes AJ, Ramsden CE. Lipidomic profiling of targeted oxylipins with ultra-performance liquid chromatography-tandem mass spectrometry. *Anal Bioanal Chem*. 2018;410(23):6009–29. [PubMed: 30074088]
4. Catella F, Healy D, Lawson JA, FitzGerald GA. 11-Dehydrothromboxane B2: a quantitative index of thromboxane A2 formation in the human circulation. *Proc Natl Acad Sci U S A*. 1986;83(16):5861–5. [PubMed: 3461463]
5. Lundström SL, Yang J, Källberg HJ, Thunberg S, Gafvelin G, Haeggström JZ, et al. Allergic asthmatics show divergent lipid mediator profiles from healthy controls both at baseline and following birch pollen provocation. *PLoS One*. 2012;7(3):e33780.
6. Ramsden CE, Domenichiello AF, Yuan ZX, Sapio MR, Keyes GS, Mishra SK, et al. A systems approach for discovering linoleic acid derivatives that potentially mediate pain and itch. *Sci Signal*. 2017;10(493).
7. Sorokin AV, Domenichiello AF, Dey AK, Yuan ZX, Goyal A, Rose SM, et al. Bioactive Lipid Mediator Profiles in Human Psoriasis Skin and Blood. *J Invest Dermatol*. 2018;138(7):1518–28. [PubMed: 29454560]
8. Grapov D, Adams SH, Pedersen TL, Garvey WT, Newman JW. Type 2 diabetes associated changes in the plasma non-esterified fatty acids, oxylipins and endocannabinoids. *PLoS One*. 2012;7(11):e48852.
9. Lundström SL, Yang J, Brannan JD, Haeggström JZ, Hammock BD, Nair P, et al. Lipid mediator serum profiles in asthmatics significantly shift following dietary supplementation with omega-3 fatty acids. *Mol Nutr Food Res*. 2013;57(8):1378–89. [PubMed: 23824870]
10. Ramsden CE, Faurot KR, Zamora D, Suchindran CM, Macintosh BA, Gaylord S, et al. Targeted alteration of dietary n-3 and n-6 fatty acids for the treatment of chronic headaches: a randomized trial. *Pain*. 2013;154(11):2441–51. [PubMed: 23886520]
11. Ramsden CE, Ringel A, Feldstein AE, Taha AY, MacIntosh BA, Hibbeln JR, et al. Lowering dietary linoleic acid reduces bioactive oxidized linoleic acid metabolites in humans. *Prostaglandins Leukot Essent Fatty Acids*. 2012;87(4–5):135–41. [PubMed: 22959954]
12. Golovko MY, Murphy EJ. An improved LC-MS/MS procedure for brain prostanoid analysis using brain fixation with head-focused microwave irradiation and liquid-liquid extraction. *J Lipid Res*. 2008;49(4):893–902. [PubMed: 18187404]
13. Hennebelle M, Metherel AH, Kitson AP, Otoki Y, Yang J, Lee KSS, et al. Brain oxylipin concentrations following hypercapnia/ischemia: effects of brain dissection and dissection time. *J Lipid Res*. 2019;60(3):671–82. [PubMed: 30463986]
14. Liakh I, Pakiet A, Sledzinski T, Mika A. Modern Methods of Sample Preparation for the Analysis of Oxylipins in Biological Samples. *Molecules*. 2019;24(8).
15. Gladine C, Ostermann AI, Newman JW, Schebb NH. MS-based targeted metabolomics of eicosanoids and other oxylipins: Analytical and inter-individual variabilities. *Free Radic Biol Med*. 2019.



16. Kamlage B, Neuber S, Bethan B, González Maldonado S, Wagner-Golbs A, Peter E, et al. Impact of Prolonged Blood Incubation and Extended Serum Storage at Room Temperature on the Human Serum Metabolome. *Metabolites*. 2018;8(1).
17. Metherel AH, Stark KD. The stability of blood fatty acids during storage and potential mechanisms of degradation: A review. *Prostaglandins Leukot Essent Fatty Acids*. 2016;104:33–43. [PubMed: 26802940]
18. Thiara AS, Cundliffe E. Cloning and characterization of a DNA gyrase B gene from *Streptomyces sphaeroides* that confers resistance to novobiocin. *EMBO J*. 1988;7(7):2255–9. [PubMed: 2843361]
19. Wagner-Golbs A, Neuber S, Kamlage B, Christiansen N, Bethan B, Rennefahrt U, et al. Effects of Long-Term Storage at –80 °C on the Human Plasma Metabolome. *Metabolites*. 2019;9(5).
20. van 't Erve TJ, Lih FB, Kadiiska MB, Deterding LJ, Eling TE, Mason RP. Reinterpreting the best biomarker of oxidative stress: The 8-iso-PGF(2alpha)/PGF(2alpha) ratio distinguishes chemical from enzymatic lipid peroxidation. *Free Radic Biol Med*. 2015;83:245–51.20 [PubMed: 25772010]
21. Herbertsson H, Kühme T, Hammarström S. The 650-kDa 12(S)-hydroxyeicosatetraenoic acid binding complex: occurrence in human platelets, identification of hsp90 as a constituent, and binding properties of its 50-kDa subunit. *Arch Biochem Biophys*. 1999;367(1):33–8. [PubMed: 10375396]
22. Marcus AJ, Broekman MJ, Safier LB, Ullman HL, Islam N, Serhan CN, et al. Production of arachidonic acid lipoxygenase products during platelet-neutrophil interactions. *Clin Physiol Biochem*. 1984;2(2–3):78–83. [PubMed: 6435929]
23. Porro B, Songia P, Squellerio I, Tremoli E, Cavalca V. Analysis, physiological and clinical significance of 12-HETE: a neglected platelet-derived 12-lipoxygenase product. *J Chromatogr B Analyt Technol Biomed Life Sci*. 2014;964:26–40.
24. Squellerio I, Porro B, Songia P, Veglia F, Caruso D, Tremoli E, et al. Liquid chromatography-tandem mass spectrometry for simultaneous measurement of thromboxane B2 and 12(S)-hydroxyeicosatetraenoic acid in serum. *J Pharm Biomed Anal*. 2014;96:256–62. [PubMed: 24786190]
25. Schneider C, Strayhorn WD, Brantley DM, Nanney LB, Yull FE, Brash AR. Upregulation of 8-lipoxygenase in the dermatitis of IkappaB-alpha-deficient mice. *J Invest Dermatol*. 2004;122(3):691–8. [PubMed: 15086555]
26. Bürger F, Krieg P, Marks F, Fürstenberger G. Positional- and stereo-selectivity of fatty acid oxygenation catalysed by mouse (12S)-lipoxygenase isoenzymes. *Biochem J*. 2000;348 Pt 2:329–35. [PubMed: 10816426]
27. Kaduce TL, Figard PH, Leifur R, Spector AA. Formation of 9-hydroxyoctadecadienoic acid from linoleic acid in endothelial cells. *J Biol Chem*. 1989;264(12):6823–30. [PubMed: 2496121]
28. Godessart N, Camacho M, López-Belmonte J, Anton R, García M, de Moragas JM, et al. Prostaglandin H-synthase-2 is the main enzyme involved in the biosynthesis of octadecanoids from linoleic acid in human dermal fibroblasts stimulated with interleukin-1beta. *J Invest Dermatol*. 1996;107(5):726–32. [PubMed: 8875957]
29. Inouye M, Mio T, Sumino K. Formation of 9-hydroxy linoleic acid as a product of phospholipid peroxidation in diabetic erythrocyte membranes. *Biochim Biophys Acta*. 1999;1438(2):204–12. [PubMed: 10320803]
30. Wagner-Golbs A, Neuber S, Kamlage B, Christiansen N, Bethan B, Rennefahrt U, et al. Effects of Long-Term Storage at –80 °C on the Human Plasma Metabolome. *Metabolites*. 2019;9(5).
31. Goodfriend TL, Pedersen TL, Grekin RJ, Hammock BD, Ball DL, Vollmer A. Heparin, lipoproteins, and oxygenated fatty acids in blood: a cautionary note. *Prostaglandins Leukot Essent Fatty Acids*. 2007;77(5–6):363–6. [PubMed: 18036802]

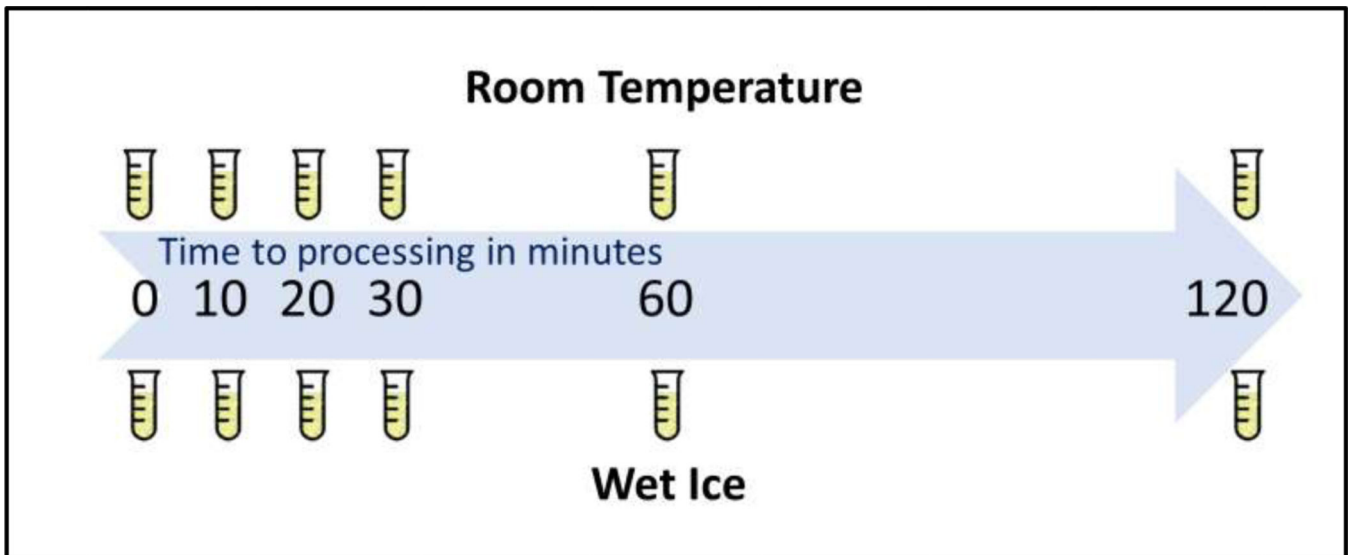
### Highlights

- Concentrations of certain oxylipins measured in human plasma in potassium-EDTA tubes are reasonably stable when stored on wet ice for up to 2 hours prior to processing
- Substantial time-dependent increases in the 12-lipoxygenase-derived and platelet-derived oxylipins were observed when whole blood stored at room temperature prior to processing
- Future studies are needed to determine the impacts of other pre-analytical variables on plasma oxylipin concentration

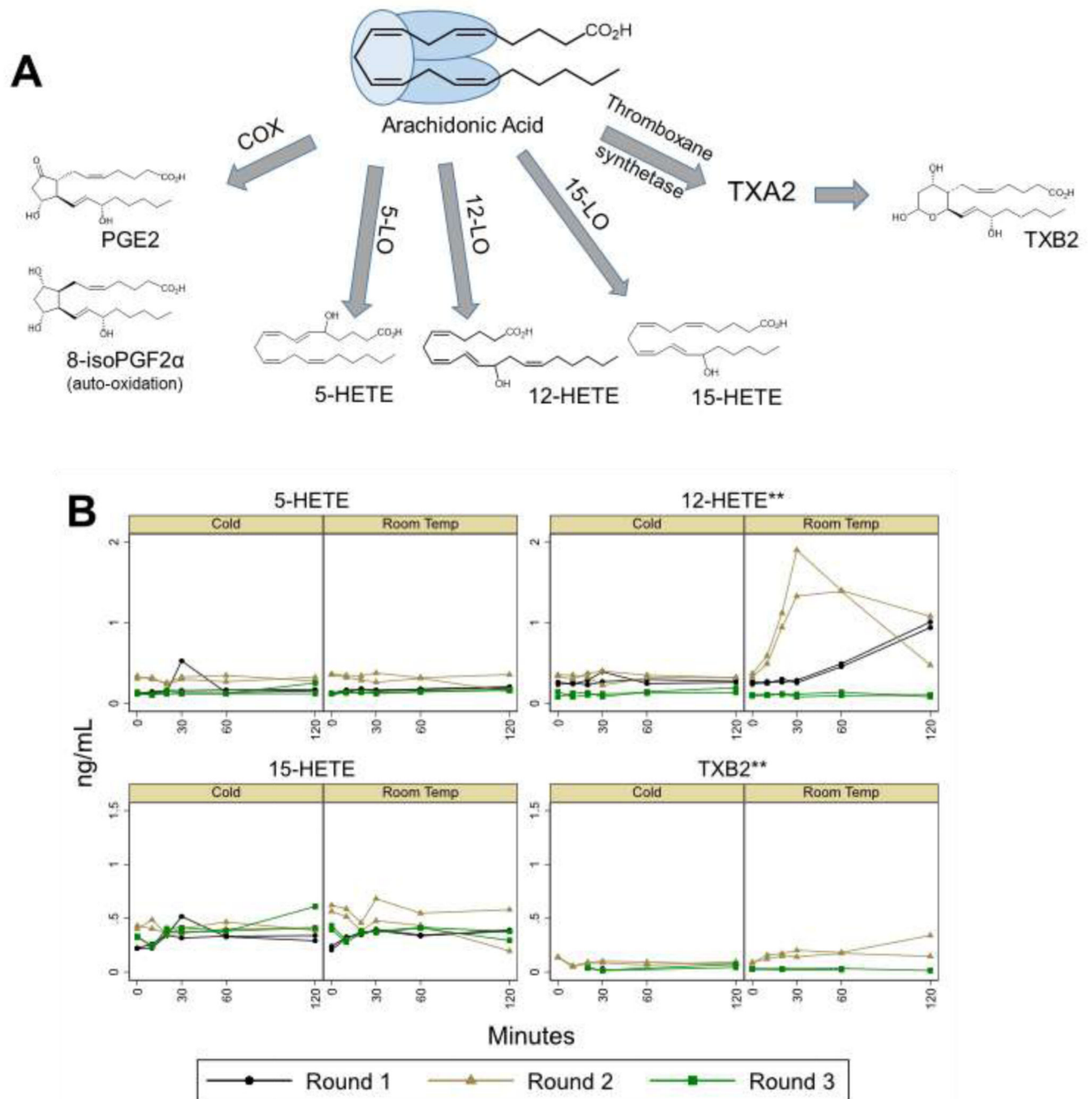


**Fig 1. Oxidation of the 1,4-cis-cis-pentadiene structures in polyunsaturated fatty acids**

(A) Linoleic, arachidonic and docosahexaenoic acid contain one, three and five 1,4-cis-cis-pentadiene structures, respectively. (B) 1,4-cis-cis-pentadiene structures are susceptible to enzymatic and free-radical mediated peroxidation, forming hydroperoxy-fatty acids, and (C) epoxy-fatty acids. Hydroperoxy-fatty acids are intermediates in the synthesis of numerous oxylipins.



**Figure 2:**  
Sampling timeline used to assess temperature and time-dependent effects of delayed processing on oxylipin concentrations in human plasma.



**Fig 3: Arachidonic acid-derived oxylipins: Molecular pathways for synthesis and change from baseline by time and temperature.**

Panel A shows the molecular pathways involved in enzymatic and non-enzymatic conversion of arachidonic acid (AA) to AA-derived oxylipins. Panel B shows individual data points for plasma concentrations of each of the AA-derived oxylipin measured at baseline and following delayed processing of up to 120 minutes on wet ice or at room temperature.

Rounds with all values below the LOQ are not included in graphs. One half of the LOQ was imputed for values below LOQ. Differences between cold and room temperature at minute

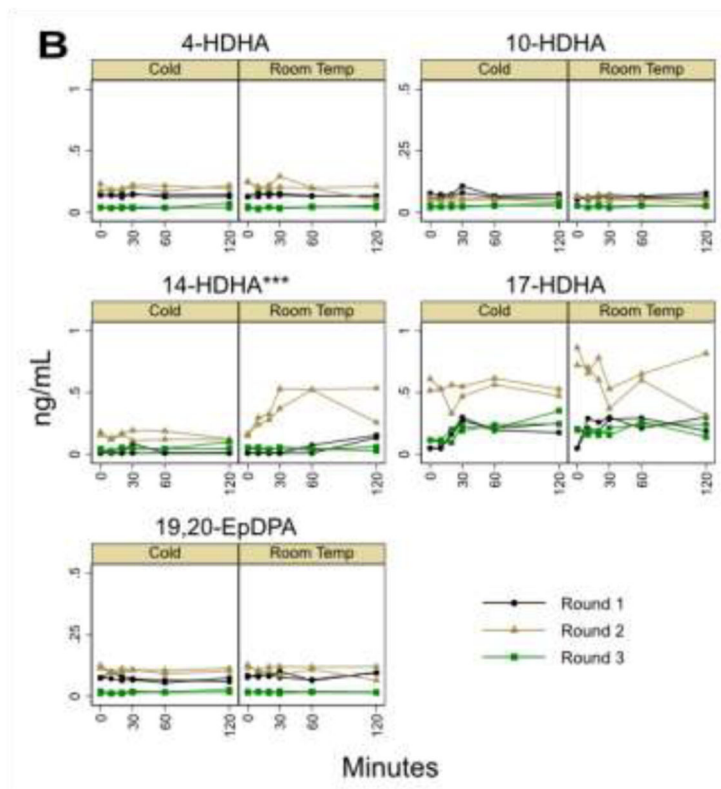
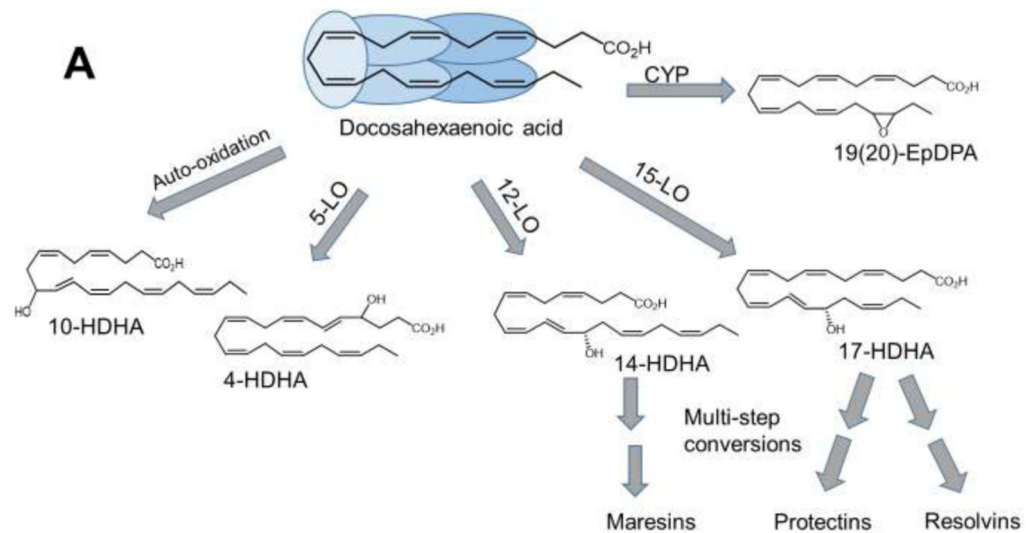
120 minute are based on longitudinal mixed models with repeated observations controlling for the data collection round. P-values: \* $<0.05$ , \*\* $<0.01$ , \*\*\* $<0.001$ .

Author Manuscript

Author Manuscript

Author Manuscript

Author Manuscript



**Fig 4: Docosahexaenoic acid-derived oxylipins: Molecular pathways for synthesis and change from baseline by time and temperature.**

Panel A shows the molecular pathways involved in enzymatic and non-enzymatic conversion of docosahexaenoic acid (DHA) to DHA-derived oxylipins. Panel B shows individual data points for plasma concentrations of each of the DHA-derived oxylipin measured at baseline and following delayed processing of up to 120 minutes on wet ice or at room temperature. One half of the LOQ was imputed for values below LOQ. Differences between cold and room temperature at minute 120 minute are based on longitudinal mixed models with



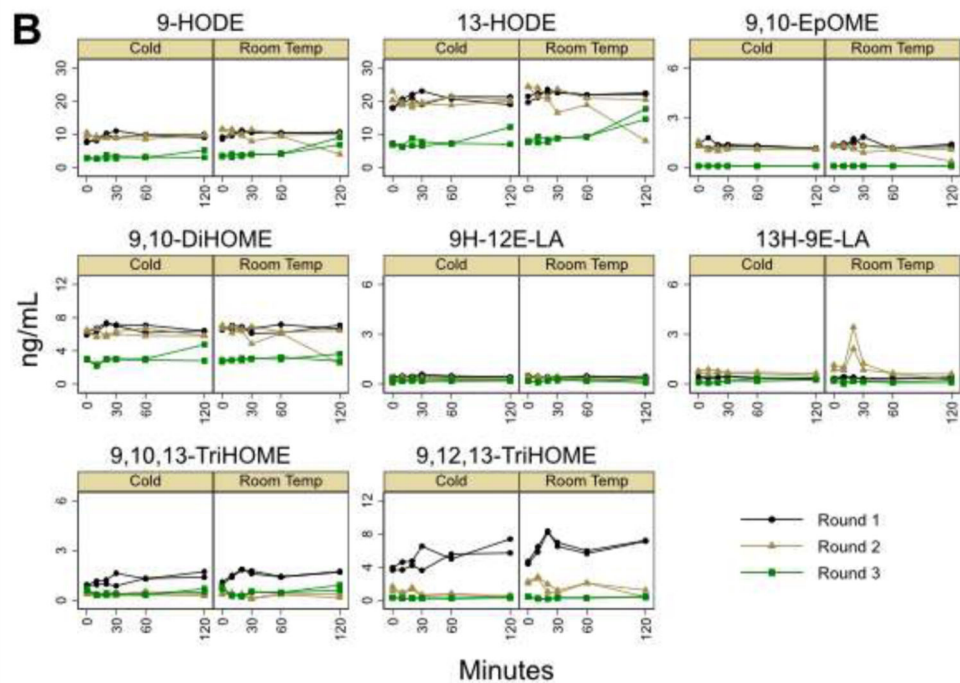
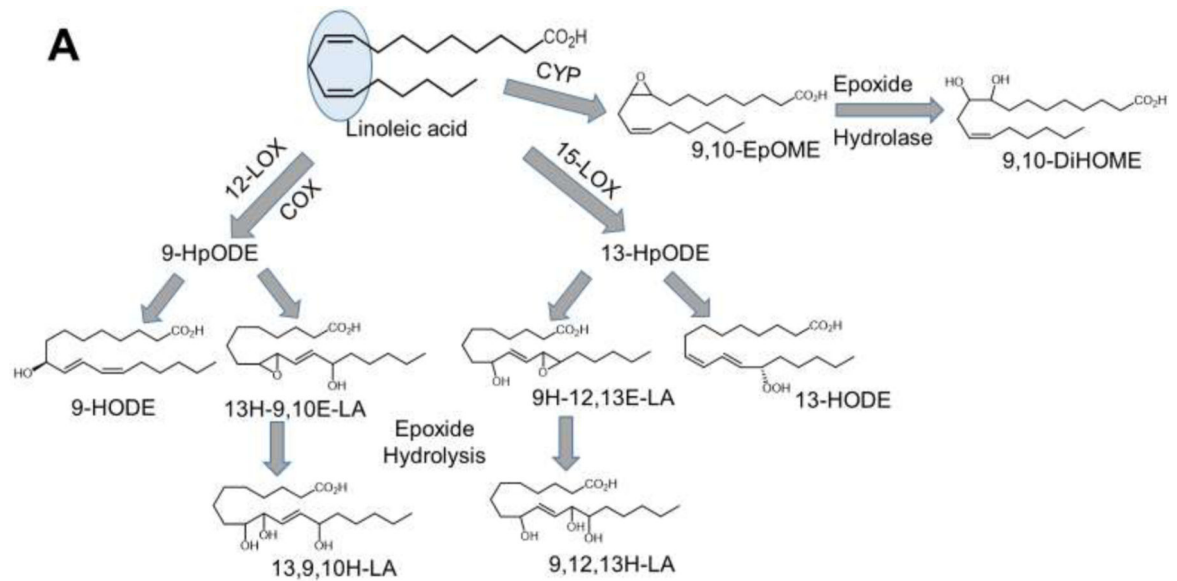
repeated observations controlling for the data collection round. P-values: \* $<0.05$ , \*\* $<0.01$ , \*\*\* $<0.001$ .

Author Manuscript

Author Manuscript

Author Manuscript

Author Manuscript



**Fig 5: Linoleic acid-derived oxylipins: Molecular pathways for synthesis and change from baseline by time and temperature.**

Panel A shows the molecular pathways involved in enzymatic and non-enzymatic conversion of linoleic acid (LA) to LA-derived oxylipins. Panel B shows individual data points for plasma concentrations of each of the DHA-derived oxylipin measured at baseline and following delayed processing of up to 120 minutes on wet ice or at room temperature. One half of the LOQ was imputed for values below LOQ. Differences between cold and room temperature at minute 120 minute are based on longitudinal mixed models with

repeated observations controlling for the data collection round. P-values: \* $<0.05$ , \*\* $<0.01$ , \*\*\* $<0.001$ .

Author Manuscript

Author Manuscript

Author Manuscript

Author Manuscript

**Table 1.**

Model-predicted oxylipin estimates after 120 minutes of exposure to room temperature or wet ice (ng/ml)

	Wet ice	Room temperature	Difference (Room-Wet Ice) <sup>*</sup>	
	Estimate (95% CI)	Estimate (95% CI)	Estimate (95% CI)	p-value
<i>AA</i>				
5-HETE	0.22 (0.18, 0.26)	0.21 (0.16, 0.25)	-0.01 (-0.07, 0.05)	0.69
12-HETE	0.25 (0.07, 0.43)	0.62 (0.43, 0.80)	0.37 (0.11, 0.62)	0.005
15-HETE	0.41 (0.35, 0.48)	0.36 (0.30, 0.43)	-0.05 (-0.14, 0.04)	0.246
TXB2 <sup>**</sup>	0.05 (0.03, 0.08)	0.10 (0.07, 0.12)	0.05 (0.01, 0.08)	0.009
<i>DHA</i>				
4-HDHA	0.13 (0.12, 0.15)	0.11 (0.10, 0.13)	-0.02 (-0.04, 0.00)	0.069
10-HDHA	0.05 (0.04, 0.06)	0.05 (0.04, 0.05)	-0.00 (-0.01, 0.01)	0.466
14-HDHA <sup>**</sup>	0.07 (0.02, 0.12)	0.20 (0.14, 0.25)	0.13 (0.06, 0.20)	0.001
17-HDHA <sup>**</sup>	0.34 (0.27, 0.42)	0.33 (0.26, 0.40)	-0.01 (-0.12, 0.09)	0.787
19,20-EpDPA	0.07 (0.06, 0.07)	0.07 (0.06, 0.08)	0.00 (-0.01, 0.01)	0.713
<i>LA</i>				
9-HODE	7.86 (6.87, 8.86)	8.58 (7.59, 9.57)	0.72 (-0.68, 2.12)	0.316
13-HODE	16.66 (14.70, 18.62)	17.58 (15.63, 19.54)	0.93 (-1.85, 3.70)	0.513
9,10-EpOME <sup>**</sup>	0.79 (0.67, 0.91)	0.72 (0.61, 0.84)	-0.07 (-0.23, 0.10)	0.428
9,10-DiHOME	5.33 (4.85, 5.82)	4.83 (4.34, 5.31)	-0.51 (-1.19, 0.18)	0.149
9-H-12-E-LA	0.30 (0.25, 0.35)	0.28 (0.23, 0.33)	-0.02 (-0.09, 0.04)	0.479
13-H-9-E-LA <sup>**</sup>	0.39 (0.14, 0.63)	0.32 (0.08, 0.57)	-0.07 (-0.41, 0.28)	0.714
9,10,13-TriHOME	0.83 (0.67, 0.99)	0.92 (0.76, 1.08)	0.09 (-0.14, 0.31)	0.453
9,12,13-TriHOME	2.49 (1.86, 3.12)	2.79 (2.16, 3.41)	0.30 (-0.59, 1.18)	0.513

\* Based on longitudinal mixed models for repeated measures controlling for the data collection round.

\*\* Some observations were below the limit of quantitation (LOQ) and were imputed with ½ of the LOQ.