

UC Davis

UC Davis Previously Published Works

Title

Relationships Between Temperature, pH, and Crusting on Mg/Ca Ratios in Laboratory-Grown Neogloboquadrina Foraminifera

Permalink

<https://escholarship.org/uc/item/5xk849zj>

Journal

Paleoceanography and Paleoclimatology, 32(11)

ISSN

2572-4517

Authors

Davis, Catherine V
Fehrenbacher, Jennifer S
Hill, Tessa M
[et al.](#)

Publication Date

2017-11-01

DOI

10.1002/2017pa003111

Peer reviewed



RESEARCH ARTICLE

10.1002/2017PA003111

Key Points:

- Crust and ontogenetic calcite in Neogloboquadrinid foraminifera have differing Mg/Ca:temperature relationships
- Mg/Ca ratios of ontogenetic calcite in Neogloboquadrina incompta and Neogloboquadrina pachyderma reflect environmental temperature
- Carbonate chemistry does not influence Mg/Ca ratios of these foraminifera over a pH range of 7.4–8.2

Supporting Information:

- Supporting Information S1

Correspondence to:

C. V. Davis,
cvdavis@seoe.sc.edu

Citation:

Davis, C. V., Fehrenbacher, J. S., Hill, T. M., Russell, A. D., & Spero, H. J. (2017). Relationships between temperature, pH, and crusting on Mg/Ca ratios in laboratory-grown *Neogloboquadrina* foraminifera. *Paleoceanography*, 32. <https://doi.org/10.1002/2017PA003111>

Received 27 FEB 2017

Accepted 2 OCT 2017

Accepted article online 6 OCT 2017

Relationships Between Temperature, pH, and Crusting on Mg/Ca Ratios in Laboratory-Grown *Neogloboquadrina* Foraminifera

Catherine V. Davis^{1,2} , Jennifer S. Fehrenbacher^{1,3} , Tessa M. Hill^{1,2} , Ann D. Russell¹, and Howard J. Spero¹ 

¹Department of Earth and Planetary Sciences, University of California, Davis, CA, USA, ²Bodega Marine Laboratory, University of California, Bodega Bay, CA, USA, ³College of Earth, Ocean and Atmosphere, Oregon State University, Corvallis, OR, USA

Abstract Mg/Ca ratio paleothermometry in foraminifera is an important tool for the reconstruction and interpretation of past environments. However, existing Mg/Ca:temperature relationships for planktic species inhabiting middle- and high-latitude environments are limited by a lack of information about the development and impact of low-Mg/Ca ratio “crusts” and the influence of the carbonate system on Mg/Ca ratios in these groups. To address this, we cultured individual specimens of *Neogloboquadrina incompta* and *Neogloboquadrina pachyderma* in seawater across a range of temperature (6°–12°C) and pH (7.4–8.2). We found by laser ablation inductively couple mass spectrometry analyses of shells that culture-grown crust calcite in *N. incompta* had a lower Mg/Ca ratio than ontogenetic calcite formed at the same temperature, suggesting that temperature is not responsible for the low-Mg/Ca ratio of neogloboquadrinid crusts. The Mg/Ca:temperature relationship for ontogenetic calcite in *N. incompta* was consistent with the previously published culture-based relationship, and no significant relationship was found between Mg/Ca ratios and pH in this species. However, the Mg/Ca ratio in laboratory-cultured *N. pachyderma* was much higher than that reported in previous core top and sediment trap samples, due to lack of crust formation in culture. Application of our ontogenetic calcite-specific Mg/Ca:temperature relationships to fossil *N. pachyderma* and *N. incompta* from five intervals in cores from the Santa Barbara Basin and the Bering Sea shows that excluding crust calcite in fossil specimens may improve Mg/Ca-based temperature estimates.

1. Introduction

Planktic foraminifera preserved in sediments are a rich archive of paleoceanographic information, and shell Mg/Ca ratios are an increasingly important component of geochemical paleothermometry (e.g., Barker et al., 2005; Cléroux et al., 2008; Dekens et al., 2008; Elderfield & Ganssen, 2000; Lea et al., 2002; Nürnberg, 1995; Sadekov et al., 2009; Schmidt, Spero, & Lea, 2004; Tripati et al., 2003). For example, Mg/Ca paleothermometry used in conjunction with $\delta^{18}\text{O}_{\text{calcite}}$ can isolate the contribution of $\delta^{18}\text{O}_{\text{seawater}}$ to infer changes in the hydrological system or ice volume (e.g., Lea et al., 2002; Mashiotta et al., 1999; Schmidt et al., 2004; Stott et al., 2004). However, Mg/Ca:temperature relationships can be specific to morphospecies (Lea et al., 1999; Mashiotta et al., 1999; Nürnberg et al., 1996; von Langen et al., 2005) and even genotypes (Sadekov et al., 2016) and may be influenced by intrashell variability in Mg/Ca ratios, such as crusting (Sadekov et al., 2009), as well as the inorganic carbon system (Lea et al., 1999; Russell et al., 2004), salinity (Hönisch et al., 2013; Lea et al., 1999), and oceanic Mg/Ca (Evans et al., 2016).

Understanding the history and dynamics of diverse oceanographic regions, especially high latitudes, is critical for placing future global change in a long-term context. Foraminifers of the genus *neogloboquadrina*, *N. pachyderma* (formerly *N. pachyderma* var. *sinistral* (Darling et al., 2006)) and *N. incompta* (formerly *N. pachyderma* var. *dextral* (Darling et al., 2006)), are often well preserved and the dominant species in low-diversity assemblages, making them good candidates for Mg/Ca paleothermometry at high latitudes. *Neogloboquadrina pachyderma* is a morphospecies with a bipolar distribution (Bé & Tolderlund, 1971; Darling & Wade, 2008), comprising several genotypes (Darling et al., 2004; Darling & Wade, 2008). It is often the only abundant species in polar and subpolar faunas (Bauch et al., 2002;

Eyraud, 2011; Eyraud et al., 2009). *Neogloboquadrina incompta* has a wider temperate to subpolar distribution (Darling & Wade, 2008), and both *N. pachyderma* and *N. incompta* have been reported in association with some tropical and temperate upwelling regions (Davis et al., 2016; Naidu & Malmgren, 1996). Whereas the *N. pachyderma* Mg/Ca:temperature relationship has never been established in controlled laboratory experiments, relationships based on core tops (Hendry et al., 2009; Kozdon, Eisenhauer, et al., 2009; Mashiotta et al., 1999; Nürnberg, 1995; Vázquez Riveiros et al., 2016) and sediment traps (Jonkers et al., 2013) have been published. A laboratory-calibrated Mg/Ca:temperature relationship has been developed using combined data from *N. incompta* and *Neogloboquadrina dutertrei* (a subtropical/tropical species) (von Langen et al., 2005), but it is unclear whether this is also applicable to *N. pachyderma*. The temperatures obtained from these relationships are often inconsistent with one another. Possible sources for disagreement between published Mg/Ca:temperature relationships for *N. pachyderma* and *N. incompta* include an unconstrained carbonate ion ($[\text{CO}_3^{2-}]$) and/or pH influence and the presence of a thick low-Mg/Ca ratio crust found on the outer portion of neogloboquadrinid shells (Hendry et al., 2009; Jonkers et al., 2013, 2016).

Previous culture experiments have shown that $[\text{CO}_3^{2-}]$ can influence Mg/Ca ratios in the spinose planktic foraminifers *Orbulina universa* and *Globigerina bulloides* (Lea et al., 1999; Russell et al., 2004). Varying levels of Mg/Ca ratio sensitivity to the inorganic carbonate system in the form of pH and/or $[\text{CO}_3^{2-}]$ have also been established in benthic foraminifera (Dissard et al., 2010; Elderfield et al., 2006; Raitzsch et al., 2010; Rathmann & Kuhnert, 2008; Rosenthal et al., 1997; Yu & Elderfield, 2008), with Mg/Ca ratios in some species insensitive to pH and/or $[\text{CO}_3^{2-}]$ (Dissard et al., 2010; Rathmann & Kuhnert, 2008). A substantial pH and/or $[\text{CO}_3^{2-}]$ control on Mg/Ca ratios could introduce error into interpretations of the Mg/Ca:temperature signals in fossil foraminifera, especially for morphospecies such as *N. pachyderma* and *N. incompta* which combined have a subtropical to polar distribution (Bé & Tolderlund, 1971; Darling & Wade, 2008) and can live in waters with highly variable $[\text{CO}_3^{2-}]$ such as upwelling regions or even at the sea ice-water interface (Dieckmann et al., 1991; Hendry et al., 2009; Spindler & Dieckmann, 1986). This potential influence of pH and/or $[\text{CO}_3^{2-}]$ could be a confounding factor in interpreting Mg/Ca ratios and has been evoked as an explanation for low-Mg/Ca:temperature relationship sensitivity (Jonkers et al., 2013), with some authors accounting for $[\text{CO}_3^{2-}]$ in the interpretation of their relationships (Hendry et al., 2009).

Crusting presents a further potential complication in interpretation of neogloboquadrinid Mg/Ca:temperature relationships. In all neogloboquadrinids, ontogenetic calcite is formed first and includes new chamber growth followed by gradual thickening, and formation of Mg/Ca banding in *N. pachyderma* (Jonkers et al., 2016) and *N. dutertrei* (Fehrenbacher et al., 2017). A crust is added later, if at all, with some shells acquiring a crusted texture several days prior to gametogenesis (Fehrenbacher et al., 2017; von Langen, 2001). Encrusted fossil foraminifera are characterized by a thicker shell, a distinct euhedral texture, low $\delta^{18}\text{O}$, and a relatively low-Mg/Ca ratio (Arikawa, 1983; Bolton & Marr, 2013; Kozdon, Ushikubo, et al., 2009; Sadekov et al., 2005). Analyses of core top and down core neogloboquadrinids have been unable to resolve whether the low-Mg/Ca ratio of crust calcite is the result of (1) precipitation in deeper, and hence colder, more CO_2 -rich waters than ontogenetic calcite; (2) differing Mg/Ca:temperature sensitivities between the two types of calcite (Bolton & Marr, 2013; de Nooijer et al., 2014; Hathorne et al., 2003; Steinhardt et al., 2015); (3) diagenesis (Branson et al., 2015); or (4) a combination of factors. Recent evidence argues against a temperature trigger for the formation of crust calcite (Jonkers et al., 2016), due to the presence of a low-Mg/Ca ratio crust in shells grown in a deep mixed layer of uniform temperature. Understanding the influence of crusting on Mg/Ca paleotemperature reconstructions is essential in species such as *N. pachyderma* in which such crusts make up as much as 80% of total shell mass (Kohfeld et al., 1996).

We present the results of laboratory culture experiments in the neogloboquadrinid foraminifers *N. incompta* and *N. pachyderma* with the objectives of (a) improving Mg/Ca:temperature relationships for neogloboquadrinid foraminifera by generating culture-based, species-specific relationships based on laser ablation inductively coupled plasma mass spectrometry (LA-ICP-MS) analyses, (b) examining the influence of crust versus ontogenetic calcite on Mg/Ca paleothermometry of cultured neogloboquadrinids, and (c) quantifying the potential influence of covarying parameters pH and/or $[\text{CO}_3^{2-}]$ on Mg/Ca ratios in specimens cultured across a range of seawater pH conditions.

Table 1
Composition and Source of Isotopic and Elemental Spikes

| Spike | Batch information | Spike isotopic composition | Elemental enrichment after spike addition |
|--|--------------------------------|--|---|
| ^{43}Ca (as CaCO_3) | ORNL Batch 169191 | 83.93% ^{43}Ca | 30% |
| ^{87}Sr (as SrCO_3) | NIDC LH-136990 | 91.26% ^{87}Sr | 20% |
| Sr (as $\text{SrCl}_2 \cdot 6\text{H}_2\text{O}$) | Sigma Aldrich ACS Lot MKB0071V | 99% cations as Sr ($<0.05\%$ Ba, $<0.05\%$ Ca) | 15% |

2. Methods

2.1. Live-Collected Specimens and Preparation for Culture

Culture experiments were conducted at the UC Davis Bodega Marine Laboratory (BML) and followed procedures outlined by von Langen et al. (2005). *Neogloboquadrina incompta* and *N. pachyderma* were collected between 1 and 35 km offshore of Bodega Head, CA, using vertically integrated 155 μm mesh net tows deployed to a maximum depth of 200 m. Most specimens were recovered ~35 km offshore ($38^\circ 11.6$ 0N, $123^\circ 23.9$ 0W), and tow material was returned within 2–12 h to BML to be sorted. Samples were allowed to warm to ambient air temperature (10–18°C) during transit, because chilling material during the return trip was found to inhibit foraminifera recovery, potentially due to thermal shock.

2.2. Culture Methods

Individual foraminifera were picked from plankton tows based on suitability for culture, assessed by the presence of colored cytoplasm and absence of crusting. Specimens selected for culture were rinsed once in filtered seawater, transferred via pipette into individual 75 mL polystyrene Falcon® flasks of filtered seawater (0.6 μm), and allowed to recover for ~16 h at treatment temperature. Recovery was indicated by the extension of a rhizopodial network and visible movement or streaming of rhizopods. An aliquot of a concentrated single-spike solution was added by volume to filtered seawater to achieve an isotopic or elemental enrichment to label calcite formed in culture (Table 1). Individuals that recovered were transferred into filtered seawater containing one of these labels.

Foraminifera were held at constant temperature ($\pm 0.15^\circ\text{C}$) in recirculating baths in individual Falcon® Flasks with nearly consistent salinity (33 ± 0.5 on the practical salinity unit (psu) scale). Illumination was provided on a 12 h light-dark cycle at $55 \pm 15 \mu\text{mol photons m}^{-2} \text{s}^{-2}$ by CREE XP-E 72 Watt LED lights (full spectrum). Once in labeled seawater, each specimen was photographed and measured. Each individual was observed daily and fed a 1 day old, freeze-killed *Artemia* nauplius every other day until gametogenesis or death. Gametogenesis was defined as the release of gametes, always preceded by pregametogenic characteristics including retraction of rhizopodia and loss of cytoplasm color. In contrast, a nongametogenic death was defined as the cessation of feeding and rhizopodial activity without pregametogenic features or the release of gametes. Culture solutions were replenished after feedings with spiked seawater from the same batch. After completion of their life cycle, specimens were rinsed in deionized water and archived for analysis.

2.3. Spike and Seawater Preparation

Foraminifera were kept in filtered seawater obtained from an offshore seawater intake system. Seawater was labeled geochemically with one label, either elemental Sr, ^{43}Ca , or ^{87}Sr , to identify culture-grown calcite using LA-ICP-MS to profile through the shell wall. Stock solutions were made by dissolving powdered materials into ~4% Fisher Optima HCl in Millipore water (Table 1). All labels produced signals identifiable by LA-ICP-MS; however, we found isotopic labels to be preferable to elemental Sr, due to high natural Sr variability found in ocean-grown calcite.

After adding a label, seawater for temperature treatments (6, 9, and 12°C) was returned to the measured ambient pH of incoming seawater by adding small aliquots of 0.1 N NaOH. For pH experiments with *N. incompta*, carried out only at 12°C, seawater pH was adjusted further to achieve a target pH_7 (total scale) between 7.4 and 8.2 by adding 0.1 N HCl or 0.1 N NaOH to labeled seawater. Due to a paucity of *N. pachyderma* in the net tows, we did not conduct pH experiments on this species and all *N. pachyderma* were held at ambient pH by the above method.

Table 2

Average Mg/Ca Ratios of Whole Shells, Crusted Calcite, and Ontogenetic Calcite in *N. incompta* From Santa Barbara Basin (MV0811-15JC and SPR0901) and *N. pachyderma* From the Bering Sea (U1340), Along With the Number of Individual Foraminifera Analyzed

| Core | Core depth (cm) | Age (ka) | Species | Whole shell Mg/Ca (mmol/mol) | Crust Mg/Ca (mmol/mol) | Ontogenetic Mg/Ca (mmol/mol) | <i>n</i> |
|---------------|-----------------|----------|----------------------|---------------------------------|---------------------------|---------------------------------|----------|
| SPR0901-10BC | ~ | Modern | <i>N. incompta</i> | 1.3 ± 0.4 | 0.9 ± 0.3 | 2.0 ± 0.4 | 10 |
| MV0811-15JC | 301–303 | 7.4 | <i>N. incompta</i> | 1.4 ± 0.5 | 1.0 ± 0.4 | 1.8 ± 0.7 | 6 |
| MV0811-15JC | 751–731 | 14.7 | <i>N. incompta</i> | 1.4 ± 0.5 | 1.1 ± 0.4 | 1.7 ± 0.6 | 5 |
| U1340 (1H-1A) | 1–2 | 14.5 | <i>N. pachyderma</i> | 1.0 ± 0.4 | 0.8 ± 0.3 | 1.5 ± 0.9 | 5 |
| U1340 (1H-3A) | 45–47 | 17.8 | <i>N. pachyderma</i> | 0.7 ± 0.4 | 0.6 ± 0.6 | 0.9 ± 0.5 | 13 |

2.4. Culture Water Sampling

Culture water was sampled at the start (from batches of labeled filtered seawater) and end (from several individual flasks) of each experiment and analyzed for pH_T and total alkalinity. The pH_T was measured spectrophotometrically with *m*-cresol purple dye, using an Ocean Optics Jaz Spectrophotometer EL200 (SD ± 0.003). Total alkalinity was determined via automated Gran titration on a Metrohm 809 Titrando (SD ± 2.809 μmol/kg) using 0.1 N HCl with acid concentrations standardized using Dickson certified reference materials. All carbonate system calculations were performed using CO₂Calc (Robbins et al., 2010) with CO₂ constants K₁, K₂ from Millero (2010).

2.5. Fossil Specimens

To compare Mg/Ca temperatures based on our experimental Mg/Ca:temperature relationships for *N. incompta* and *N. pachyderma* with those from other paleothermometers, fossil specimens were selected from two Santa Barbara Basin cores and a Bering Sea core. Specimens of *N. incompta* were selected from early Holocene (7.4 ka) and Bølling-Allerød (14.7 ka) intervals from Santa Barbara Basin piston core MV0811-15JC (34.37°N, 120.13°W; 418 m water depth) (Table 2). An age model (radiocarbon) for these samples was previously published (Moffitt et al., 2014). The δ¹⁸O of *G. bulloides* (Moffitt et al., 2014) from these down-core sediment intervals provided an independent temperature estimate for comparison with *N. incompta* Mg/Ca temperatures and were based on a species-specific culture-derived relationship (Bemis et al., 1998) and published δ¹⁸O_{seawater} (Bemis et al., 2002). *Neogloboquadrina incompta* specimens were also picked from a nearby box core (SPR0901-10BC, 34.28°N, 120.04°W; 596 m water depth) to obtain an estimate of modern oceanographic conditions (<250 years) (D. Pak, unpublished data). Since *G. bulloides* specimens were not available from these sediments to provide a modern δ¹⁸O-based temperature, we compared calculated Mg/Ca temperatures with modern average instrumental late-summer temperature at 50 m from WOA13 (1955–2013) (Locarnini et al., 2013). This depth and time period was chosen as being comparable to paleotemperatures from *G. bulloides*, which is most abundant in the Southern California Bight during July–September, at 40–80 m depth (Kincaid et al., 2000; Field, 2004). In Bering Sea core U1340 (53.4°N, 179.52°W; 1,294 m water depth), fossil *N. pachyderma* were picked from Bølling-Allerød (14.5 ka) and early deglacial (17.8 ka) intervals. The age model for U1340 is based on radiocarbon, and alkenone-derived paleotemperature estimates are available from Schlung et al. (2013).

2.6. Sample Preparation and Analysis

2.6.1. Sample Cleaning

Cultured planktic foraminifera were cleaned prior to LA-ICP-MS analysis to remove organics by immersion in a 1:1 mixture of 0.1 N NaOH and 30% H₂O₂ at 65°C for 30 min during which they were ultrasonicated for four 10 s periods (Mashiotta et al., 1999). All down-core and sediment surface shells were cleaned by immersion in a 1:300 mixture of 0.1 N NaOH and 30% H₂O₂ for 30 min while being periodically sonicated as for cultured shells. Fossil shells were, however, subjected to more extensive sonication than cultured shells (sonicated five to ten times for 10 s intervals) to remove any authigenic material not present in cultured specimens.

2.6.2. LA-ICP-MS Methods

All shells were ablated using a Photon Machines 193 nm ArF laser with an ANU HeEx dual-volume laser ablation cell coupled to an Agilent 7700x quadrupole-ICP-MS, in the Department of Earth and Planetary Sciences, University of California Davis. A 30 μm circular or 44 μm square spot was used to analyze each adult chamber

from the outside-in with up to four repeat ablations per chamber. Analysis followed the methodology described in Fehrenbacher et al. (2015). Individual chambers were ablated at 5 Hz with a fluence of 0.58 J cm^{-2} , and ablated material was transported in a He-Ar gas mixture. All ratios were standardized to NIST SRM 610, which was analyzed periodically between foraminifera to correct for drift. Al/Ca and Mn/Ca were monitored in fossil foraminifera, and two shells showing low ($<30 \text{ } \mu\text{mol/mol}$) but variable Al/Ca profiles were excluded from our results. No specimen had elevated Mn/Ca $> 60 \text{ } \mu\text{mol/mol}$.

2.6.3. Electron Microprobe Methods

Based on observation and LA-ICP-MS analyses, two *N. incompta* shells, determined to have grown both a new chamber and added a crust while in culture at 12°C , were selected for elemental image mapping by electron microprobe. Shells were embedded in epoxy (EpoFix), sectioned to expose a cross-sectional area of the chamber, and carbon coated. Foraminifera were analyzed with a Cameca SX-100 electron microprobe in the Department of Earth and Planetary Sciences, University of California, Davis, for Mg and Ca, using a $0.5 \text{ } \mu\text{m}$ spot size with a dwell time of 0.5 s, 15 keV voltage, and a 15 nA beam current. Ca counts below 3,500 count(s) per second were filtered to minimize edge effects.

2.6.4. Development of Mg/Ca:Temperature Relationships

Our results include chambers which were entirely grown in culture or that calcified extensively enough in culture that ocean-grown (unlabeled) calcite was too thin to be analytically resolved by laser and thus made up a negligible proportion of total calcite. A Mann-Whitney test comparing Mg/Ca ratios in chambers grown entirely in culture and those with an analytically negligible ocean-grown portion showed no significant difference in Mg/Ca ratios at 12°C ($p = 0.645$) or 9°C ($p = 0.095$). Each point in the resulting Mg/Ca:temperature relationship is composed of the average across all included chambers from a single individual. Error on temperatures is reported based upon the average standard error around mean Mg/Ca at each treatment temperature.

2.7. Statistical Treatment of Data

All data analyses were done using the stats and “nlme” packages in R (<https://R-project.org/>) (R Core Team, 2013). For statistical tests in which an assumption of normality was required, an angular transformation was applied to Mg/Ca ratio data and a Shapiro-Wilks test was used to confirm normal distribution of data. For the purposes of this analysis, data from this study (single shells) were weighted equally with those from von Langen et al. (2005) (pooled chambers) for *N. incompta*. As a result, Mg/Ca:temperature relationships are weighted toward our data set at temperatures represented in both data sets.

3. Results

3.1. Culture Observations

Chamber addition and ontogenetic changes were observed in *N. pachyderma* and *N. incompta*, culminating in gametogenesis. Chambers formed as previously described in these and other nonspinose species (Bé et al., 1979; Hemleben et al., 1989; von Langen, 2001), beginning with colored cytoplasm enclosing all or most of the shell and forming the outline of a new chamber. The eventual retreat of cytoplasm into the shell then revealed a translucent new chamber, which filled with red (for most *N. pachyderma*) or red-orange (for most *N. incompta*) cytoplasm and gradually thickened, as indicated by a decrease in translucence over the course of 1–3 days. Prior to gametogenesis, the rhizopodial network was “sticky,” allowing foraminifera to adhere to flask walls and to aggregate food particles and available debris or detritus around the shell.

After calcifying the ultimate (F) chamber, individuals signaled the beginning of gametogenesis by a decrease in “stickiness” and a gradual lightening of cytoplasm color followed by a retraction of the rhizopodial network and a cessation of feeding. By the end of this process, foraminifera were opaque, white, and lacked rhizopodia. This “pregametogenic” phase was accompanied in some *N. incompta* individuals, by the addition of a crusted texture. During gametogenesis, the individual expels gametes, leaving behind a nearly empty shell. Some individuals appeared to release small spheres of cytoplasm with independent rhizopodia some days prior to, or without the appearance of, pregametogenic characteristics. Similar structures were previously observed and thought to be potentially indicative of an asexual reproductive phase by von Langen (2001). We were unable to confirm this interpretation, as maturation into proloculi was not observed in association with the release of either cytoplasm spheres or gametes.

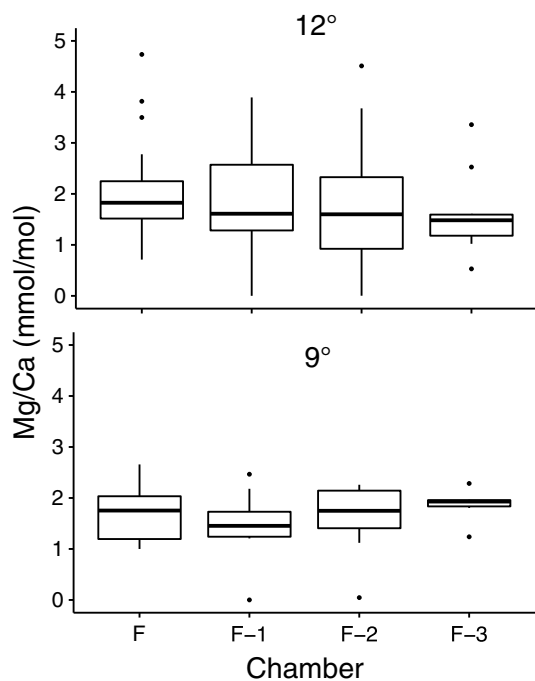


Figure 1. Mg/Ca ratio averages from sequential chambers of *N. incompta* at 12°C (top) and 9°C (bottom). Boxes encompass the 1st and 3rd quartiles, with horizontal black bars denoting the mean. No significant differences were found between successive chambers at either temperature. All calcite (both crust and ontogenetic) is included, although crusting was found in only 13% of *N. incompta*.

3.2. Influence of Crusting on Shell Mg/Ca Ratios

The Mg/Ca ratios derived from LA-ICP-MS profiles of labeled, laboratory-grown calcite of *N. incompta* were compared across culture-grown (see section 2.6.4) calcite in the four chambers of the adult whorl. Although *N. incompta* were also cultured at 6°C, no analytically discernable calcite was added at this treatment. Where multiple ablation profiles through a single chamber were possible, they were averaged to produce a single chamber Mg/Ca ratio. A repeated measures analysis of variance was used to identify significant differences across chambers within a single individual. No significant difference was found in Mg/Ca ratios across sequential chambers in the adult whorl (F, F-1, F-2, and F-3) within a temperature treatment at either 9°C ($p = 0.825$) or 12°C ($p = 0.950$) (Figure 1). The same was true of *N. pachyderma* at 6°C ($p = 0.419$), and 12°C ($p = 0.216$). The culture-grown portions from all chambers were therefore combined into a single-shell average Mg/Ca ratio.

Overall, the incidence of geochemical crusts forming in culture was extremely low, occurring in only 13% of *N. incompta* ($n = 6$), and in no *N. pachyderma* (Table 3). In the 12°C treatment, two *N. incompta* added a new chamber followed by a crust. In these chambers, the texturally crusted portion of the shell had substantially lower Mg/Ca ratios (1.7 and 1.0 mmol/mol) than the ontogenetic calcite (3.2 and 2.5 mmol/mol) (Figure 2). Whole shell Mg/Ca ratios, integrating both portions of the shell (2.2 mmol/mol and 1.8 mmol/mol) would thus reflect a mixture of ontogenetic and crust calcite Mg/Ca ratios. A two end-member (binary) mixing model indicates that the Mg/Ca ratio of crusted calcite contributed a 60% and 40% proportion of the whole shell Mg/Ca ratio in these shells.

Bands of high- and low-Mg/Ca ratios were observed in several *N. incompta* shells, grown both in the laboratory and in the ocean, but were confined to the inner, ontogenetic layer of the shell. Crust Mg/Ca ratios, in contrast, were relatively homogenous (Figure 3).

3.3. Mg/Ca Temperature Relationships in Ontogenetic Calcite

Combining data from *N. incompta* shell Mg/Ca ratios grown at 9°C and 12°C (Table 4) with those from von Langen et al. (2005) produces equation (1) for *N. incompta* where T is temperature:

$$\text{Mg/Ca (mmol/mol)} = 0.71(\pm 0.14) * e^{(0.08(\pm 0.01) * T)} \quad (1)$$

An exponential model is applied, as the Mg/Ca ratio of planktic foraminifera shells has been shown to increase exponentially with temperature (e.g., Barker et al., 2005; Jonkers et al., 2013; Lea et al., 1999; Mashiotta et al., 1999; Nürnberg, 1995; Rosenthal et al., 1997; Vázquez Riveiros et al., 2016). LA-ICP-MS analyses of *N. incompta* grown in culture revealed high interindividual Mg/Ca ratio variability (Figure 4), which was not accounted for by temperature or pH. This variability cannot be attributed to salinity ($\pm < 1$ psu), nor ontogeny as there were no significant differences between chambers. Although still unexplained, such interspecimen variability has also been observed in the foraminifers *Orbulina universa* and *Globigerinoides sacculifer* grown under constant conditions (Dueñas-Bohórquez et al., 2011; Spero et al., 2015).

In the Mg/Ca:temperature relationship derived from *N. pachyderma* cultured at 6, 9, and 12°C, Mg/Ca ratios were higher than those estimated from previously published *N. pachyderma* Mg/Ca:temperature relationships from core tops and sediment traps (Hendry et al., 2009; Jonkers et al., 2013; Kozdon, Eisenhauer, et al., 2009; Nürnberg, 1995; Vázquez Riveiros et al., 2016), and different from those in *N. incompta* (Figure S1 in the supporting information). Our results, using individual shell LA-ICP-MS profiles, yield the following relationship (Figure 4) where T is temperature:

$$\text{Mg/Ca (mmol/mol)} = 0.71 (\pm 0.2) * T - 2.49(\pm 1.5) \quad (2)$$

Table 3
Seawater Parameters and Mg/Ca in Cultured Foraminifera, Including Mg/Ca Ratios for Each Chamber and a Chamber Average for Each Individual Shell

| Species | Temperature (°C) | Culture conditions | | | | Mg/Ca (mmol/mol) | | | | | | | Life history | | | Longest dimension (µm) | |
|--------------------|------------------|--------------------|--|----------------------|------|------------------|------|------|-----|-----|---------------|-------------------------|--------------|--------------|---------|------------------------|-------|
| | | pH (total) | [CO ₃ ²⁻] (µmol/kg) | Alkalinity (µmol/kg) | F | F-1 | F-2 | F-3 | F-4 | F-5 | Shell average | New chamber in culture? | Crust? | Gametogenic? | Initial | | Final |
| | | | | | | | | | | | | | | | | | |
| <i>N. incompta</i> | 9 | 7.8 | | | 1 | 1.25 | 1.5 | 1.93 | | | | | | | 168 | 149 | |
| <i>N. incompta</i> | 9 | 7.8 | | | 1.83 | 2.47 | 2.26 | 1.97 | | | | | | | 192 | 204 | |
| <i>N. incompta</i> | 9 | 8.13 | 117.14 | 2040 | 2.1 | 2.47 | 2.26 | 1.97 | | | | | | | 242 | 256 | |
| <i>N. incompta</i> | 9 | 8.13 | 117.14 | 2040 | 2.66 | 1.58 | | | | | | | | | 242 | 283 | |
| <i>N. incompta</i> | 9 | 8.13 | 117.14 | 2040 | | 2.18 | 2.2 | | | | | | | | 185 | 210 | |
| <i>N. incompta</i> | 9 | 8.13 | 117.14 | 2040 | | 1.45 | 1.78 | 2.28 | | | | | | | 219 | 239 | |
| <i>N. incompta</i> | 9 | 8.13 | 117.14 | 2040 | | 1.46 | 2.12 | 1.93 | | | | | | | 199 | 207 | |
| <i>N. incompta</i> | 9 | 8.05 | 142 | 1781 | 1.68 | 1.46 | 1.72 | 1.8 | | | | | | | 150 | 201 | |
| <i>N. incompta</i> | 9 | 8.05 | 142 | 1781 | 1.04 | 1.21 | 1.12 | 1.24 | | | | | | | 178 | 199 | |
| <i>N. incompta</i> | 12 | 7.8 | | | 2.13 | | | | | | | | | | | | |
| <i>N. incompta</i> | 12 | 7.8 | | | 2.39 | | | | | | | | | | 110 | 206 | |
| <i>N. incompta</i> | 12 | 7.8 | | | 2.78 | 2.33 | 3.33 | | | | | | | | | | |
| <i>N. incompta</i> | 12 | 7.8 | | | 2.38 | | | | | | | | | | 211 | 233 | |
| <i>N. incompta</i> | 12 | 8 | 127.31 | 2366 | 1.49 | 1.62 | 1.73 | 1.59 | | | | | | | | | |
| <i>N. incompta</i> | 12 | 8 | 127.31 | 2366 | 2.25 | 1.56 | 2.42 | | | | | | | | 151 | 168 | |
| <i>N. incompta</i> | 12 | 8 | 127.31 | 2366 | 1.54 | 1.71 | 1.6 | | | | | | | | 86 | 100 | |
| <i>N. incompta</i> | 12 | 8 | 127.31 | 2366 | 1.8 | 1.98 | 1.22 | 2.55 | | | | | | | 93 | 102 | |
| <i>N. incompta</i> | 12 | 8 | 127.31 | 2366 | 1.83 | 1.6 | 1.7 | | | | | | | | 108 | 113 | |
| <i>N. incompta</i> | 12 | 8.14 | 172.55 | 2417.92 | 2.21 | 2.31 | 2.33 | | | | | | | | 92 | 97 | |
| <i>N. incompta</i> | 12 | 8.14 | 172.55 | 2417.92 | 1.47 | 1.83 | 1.46 | 1.48 | | | | | | | 111 | 133 | |
| <i>N. incompta</i> | 12 | 8.14 | 172.55 | 2417.92 | 1.67 | 1.4 | | | | | | | | | 102 | 113 | |
| <i>N. incompta</i> | 12 | 8.14 | 172.55 | 2417.92 | 1.55 | 1.24 | | | | | | | | | 102 | 106 | |
| <i>N. incompta</i> | 12 | 8.14 | 172.55 | 2417.92 | 2.25 | 2.72 | 2.82 | | | | | | | | 90 | 94 | |
| <i>N. incompta</i> | 12 | 8.14 | 172.55 | 2417.92 | 1.8 | 1.53 | | | | | | | | | 75 | 84 | |
| <i>N. incompta</i> | 12 | 8.14 | 172.55 | 2417.92 | 2.43 | 3.19 | | | | | | | | | 102 | 108 | |
| <i>N. incompta</i> | 12 | 8.05 | 132.42 | 2092 | 3.5 | 2.65 | 1.82 | | | | | | | | 356 | 381 | |
| <i>N. incompta</i> | 12 | 8.05 | 132.42 | 2092 | 2.61 | 2.81 | 2.32 | 2.53 | | | | | | | 320 | 345 | |
| <i>N. incompta</i> | 12 | 8.05 | 132.42 | 2092 | | 1.4 | 0.64 | 1.59 | | | | | | | 254 | 269 | |
| <i>N. incompta</i> | 12 | 8.05 | 132.42 | 2092 | 1.32 | 3.58 | 3.68 | | | | | | | | 261 | 277 | |
| <i>N. incompta</i> | 12 | 8.05 | 132.42 | 2092 | 3.82 | | 1.38 | | | | | | | | | | |
| <i>N. incompta</i> | 12 | 7.41 | 31.67 | 1927 | 2.06 | | | | | | | | | | 179 | 190 | |
| <i>N. incompta</i> | 12 | 7.41 | 31.67 | 1927 | 2.12 | | | | | | | | | | 138 | 149 | |
| <i>N. incompta</i> | 12 | 7.41 | 31.67 | 1927 | 1.89 | 3.4 | 3.42 | 3.36 | | | | | | | 202 | 206 | |
| <i>N. incompta</i> | 12 | 7.41 | 31.67 | 1927 | 4.74 | 3.89 | 4.51 | 5.49 | | | | | | | 171 | 181 | |
| <i>N. incompta</i> | 12 | 7.41 | 31.67 | 1927 | 1.57 | 0.56 | 0.6 | 1.02 | | | | | | | 346 | 362 | |
| <i>N. incompta</i> | 12 | 8 | 115.94 | 2029 | 0.57 | | | | | | | | | | 268 | 300 | |
| <i>N. incompta</i> | 12 | 8 | 115.94 | 2029 | 1.04 | | | | | | | | | | 280 | 293 | |
| <i>N. incompta</i> | 12 | 8 | 115.94 | 2029 | 1.51 | 1.24 | 0.92 | 1.28 | | | | | | | 233 | 235 | |
| <i>N. incompta</i> | 12 | 8 | 115.94 | 2029 | 0.84 | 0.7 | 0.66 | 0.53 | | | | | | | 286 | 311 | |
| <i>N. incompta</i> | 12 | 8 | 115.94 | 2029 | 0.71 | 0.73 | 0.7 | | | | | | | | 262 | 320 | |
| <i>N. incompta</i> | 12 | 8 | 115.94 | 2029 | 0.99 | 1 | 1.2 | | | | | | | | 206 | 238 | |
| <i>N. incompta</i> | 12 | 8 | 115.94 | 2029 | 1.52 | | | | | | | | | | 289 | 318 | |
| <i>N. incompta</i> | 12 | 8 | 115.94 | 2029 | 2.02 | 1.61 | 2.33 | | | | | | | | | | |

Table 3. (continued)

| Species | Culture conditions | | | | Mg/Ca (mmol/mol) | | | | | | | | | | Life history | | | Longest dimension (μm) |
|----------------------|--------------------|------------|--|----------------------|------------------|------|-----|-----|-----|-----|---------------|-------------------------|--------|--------------|--------------|-------|--|------------------------|
| | Temperature (°C) | pH (total) | [CO ₃ ²⁻] (μmol/kg) | Alkalinity (μmol/kg) | F | F-1 | F-2 | F-3 | F-4 | F-5 | Shell average | New chamber in culture? | Crust? | Gametogenic? | Initial | Final | | |
| <i>N. pachyderma</i> | 6 | 7.8 | | 1.44 | 1.44 | | | | | | 1.44 | n | n | n | 69 | 79 | | |
| <i>N. pachyderma</i> | 6 | 7.8 | | 1.48 | 1.51 | | | | | | 1.50 | n | n | n | | | | |
| <i>N. pachyderma</i> | 6 | 7.8 | | 1.36 | 1.08 | 2.97 | | | | | 1.80 | n | n | n | | | | |
| <i>N. pachyderma</i> | 6 | 7.8 | | 2.68 | 1.09 | 1.27 | | | | | 1.68 | n | y | n | 71 | 117 | | |
| <i>N. pachyderma</i> | 9 | 7.8 | | 4.9 | 4.11 | | | | | | 4.90 | y | n | n | 184 | 194 | | |
| <i>N. pachyderma</i> | 9 | 7.8 | | 4.77 | 4.11 | | | | | | 4.44 | y | n | n | 194 | 213 | | |
| <i>N. pachyderma</i> | 12 | 7.8 | | 4.29 | 4.07 | 2.35 | | | | | 3.32 | y | n | n | 175 | 194 | | |
| <i>N. pachyderma</i> | 12 | 7.8 | | 6.42 | 6.79 | 5.26 | | | | | 5.25 | n | y | y | 172 | 184 | | |
| <i>N. pachyderma</i> | 12 | 8.05 | 132.42 | 2099 | 6.79 | 8.39 | | | | | 6.79 | n | n | y | 262 | 282 | | |
| <i>N. pachyderma</i> | 12 | 8.05 | 132.42 | 2099 | 7.29 | 8.39 | 8.9 | | | | 8.19 | y | n | y | 248 | 296 | | |

Note: Blank cells indicate data that were not collected and have not been included in any analyses. Life history information is also noted including whether crusting or gametogenesis occurred in culture and the longest dimension of the shell as measured at the beginning and end of culture experiments.

The resulting Mg/Ca:temperature relationship cannot be constrained beyond linear, as has been published for other limited temperature ranges studied in *N. pachyderma* (Hendry et al., 2009; Kozdon, Eisenhauer, et al., 2009). However, an exponential fit, as reported elsewhere (Jonkers et al., 2013; Mashiotta et al., 1999; Nürnberg, 1995; Vázquez Riveiros et al., 2016), may be more appropriate over a larger range of temperature.

3.4. Impact of Crust Formation on Mg/Ca Ratios in Fossil Specimens

Neogloboquadrina incompta and *N. pachyderma* analyzed from intervals in Santa Barbara Basin cores SPRO901-10BC and MV0811-15JC, and Bering Sea core U1340 contained inner ontogenetic calcite and outer crusts (identified by texture and relatively low-Mg/Ca ratios compared to ontogenetic calcite) (Figures S2 and S3). These observations are similar to the texture and geochemistry observed in cultured *N. incompta* (Figures 2, 3, and S3), and other fossil shells (Hathorne et al., 2003; (*N. incompta* and *N. dutertrei*) Bolton & Marr, 2013; de Nooijer et al., 2014; (*N. dutertrei*) Steinhardt et al., 2015). *Neogloboquadrina pachyderma* was more heavily crusted than *N. incompta*, with crust contributing between 30 and 90% of total calcite, as determined by the fraction of the total ablation time required to pass through each portion of the shell. This is as compared to 20–70% in *N. incompta* fossils. In some areas, the inner chamber calcite had been lost, potentially due to vigorous cleaning or dissolution. The loss of this shell portion is clear by both Scanning Electron Microscopy (SEM) and LA-ICP-MS analyses (Figure S3).

3.5. Applying the Mg/Ca:Temperature Relationships to Fossil Specimens

Whole shell Mg/Ca ratios in all adult chambers of *N. incompta* sampled from intervals in Santa Barbara Basin cores SPRO901-10BC and MV0811-15JC (modern, 7.4 ka, and 14.7 ka intervals) were intermediate between the low-Mg/Ca ratio of crust and high-Mg/Ca ratio of ontogenetic calcite for the same specimens (Table 5 and Figure 5). The temperature calculated from the von Langen et al. (2005) Mg/Ca:temperature relationship for Santa Barbara Basin fossil *N. incompta* from the three time slices differed depending on whether they were based on whole shell Mg/Ca ratios or only the ontogenetic portions of the shell (Table 5). When based only on ontogenetic calcite, Mg/Ca-based temperatures from the 7.4, 14.7 ka and modern intervals were 12°C, 11°C, and 10°C, respectively, as compared to δ¹⁸O-derived temperatures from *G. bulloides* (12°C during both down-core intervals) and modern average seasonal temperatures of 11°C at 60 m water depth (Table 5).

In Bering Sea core U1340, the Mg/Ca:temperature relationship (equation (2)) was applied to Mg/Ca ratios in ontogenetic calcite from *N. pachyderma*, to obtain calculated temperatures of 6°C (at 14.5 ka) and 5°C (at 17.8 ka). These temperatures are consistently lower than U₃₇^k temperatures from the samples nearest in age (10°C at 14.5 ka and 9°C at 17.8 ka) (Schlung et al., 2013; Figure 6; Table 6). The von Langen et al. (2005) Mg/Ca:temperature relationship applied to whole shell Mg/Ca ratios from these time intervals yielded temperatures of 2°C (14.5 ka) and 7°C (17.8 ka), with other published equations producing a range of results from 0 to 10°C at 14.5 ka and –7° to 4°C at 17.8 ka (Figure 6 and Table 6).

3.6. pH

For *N. incompta* at 12°C, the treatment at which pH experiments were carried out, there was no significant trend ($p = 0.123$) between Mg/Ca ratios and pH_T ($7.4 < \text{pH}_T < 8.1$; $31.7 \mu\text{mol kg}^{-1} < [\text{CO}_3^{2-}] < 172.6 \mu\text{mol kg}^{-1}$) (Figure 7 and Table S1). Moreover, a general linear mixed effects model, taking into account experimental temperature as well as measured pH within treatments, found no significant effect of pH ($p = 0.188$).

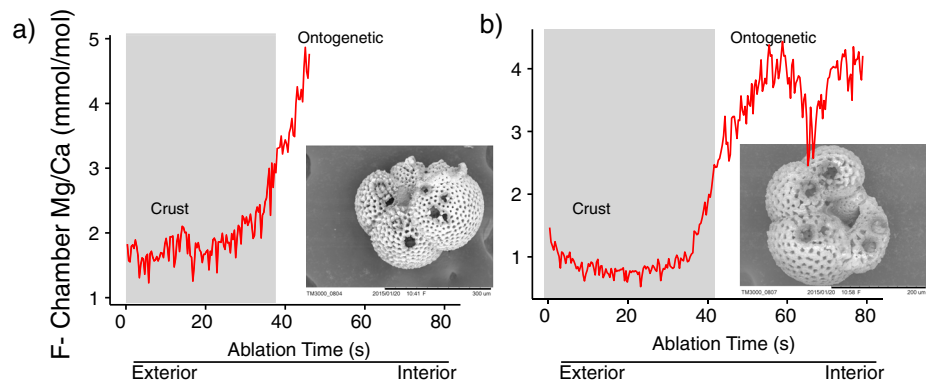


Figure 2. Representative LA-ICP-MS profiles through two *N. incompta* specimens (a) #278 and (b) #198 that grew both a new chamber and a crust in the laboratory, along with SEM images of the external shell. LA-ICP-MS profiles begin with the outer, crusted surface of the shell (0 s) and continue through the inner ontogenetic calcite layer. The crust has lower, more homogeneous Mg/Ca ratios than the inner ontogenetic calcite.

4. Discussion

4.1. Intershell and Intrashell Mg/Ca Ratio Variability in Cultured Foraminifera

The average Mg/Ca ratios from individual foraminifera in each treatment agree well with results from pooled chambers in previous experiments (von Langen et al., 2005). However, the range of Mg/Ca ratios documented in individual chambers at a single temperature is greater than in pooled chambers, a result similar to previous findings in *G. sacculifer* (Dueñas-Bohórquez et al., 2011). The observation of this high interindividual variability in cultured shells demonstrates that whereas either pooled chambers or multiple shell average Mg/Ca ratios may correlate with temperature, other physiologic factors, not directly related to hydrography, exert partial control over individual chamber Mg/Ca ratios. This finding indicates the need for caution in interpreting environmental conditions using single-shell or single-chamber analyses in these two neogloboquadrinid species.

Observed Mg/Ca ratio banding in *N. incompta* appeared similar to that reported in *N. dutertrei* (Fehrenbacher & Martin, 2010), *N. pachyderma* (Jonkers et al., 2016), and other species of planktic foraminifera (e.g., Eggins et al., 2004; Sadekov et al., 2005; Spero et al., 2015). As it occurred in culture-grown calcite, banding cannot be the product of migration within the water column with vertical changes in temperature and/or pH (Jonkers et al., 2016; Spero et al., 2015). Nor can banding be attributed to symbiont activity or alteration of the

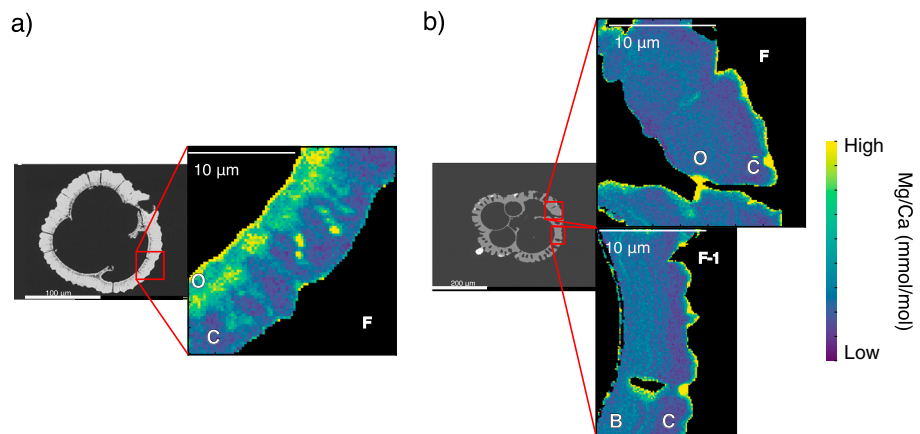


Figure 3. Backscatter images and Electron Microprobe maps of cultured *N. incompta* Mg/Ca ratios. Both F chambers were grown entirely in culture at constant temperature ($12 \pm 0.15^\circ\text{C}$). Foram #278 (a) has ontogenetic calcite (O) with a relatively high-Mg/Ca ratio and a crust (C) with a homogenous, low-Mg/Ca ratio. Some heterogeneity may be present in the ontogenetic calcite, but banding is not resolvable. Foraminifer #298 (b) shows a similar pattern in the culture-grown F chamber, although the Mg/Ca ratio difference between crust and ontogenetic calcite is less than in #176. Both F chamber and F-1 chamber (partially ocean grown) show Mg/Ca ratio banding (B) toward the interior portion of the shell.

Table 4
Average and Standard Deviation of Mg/Ca Ratios in *N. incompta* and *N. pachyderma* at Each Temperature Treatment, Number of Individual Foraminifera Analyzed, and the Resulting Mg/Ca:Temperature Relationships

| Species | Culture temperature (°C) | N | Average Mg/Ca (mmol/mol) | Mg/Ca:temperature relationship |
|----------------------|--------------------------|----|--------------------------|---|
| <i>N. incompta</i> | 9 | 9 | 1.7 ± 0.5 | Mg/Ca (mmol/mol) = 0.71(±0.14)*exp ^{(0.08(±0.01)*T)} Equation (1) |
| | 12 | 36 | 1.9 ± 0.8 | |
| <i>N. pachyderma</i> | 6 | 4 | 1.6 ± 0.2 | Mg/Ca (mmol/mol) = 0.71 (±0.2)*T - 2.49(±1.5) Equation (3) |
| | 9 | 2 | 4.7 ± 0.3 | |
| | 12 | 4 | 5.9 ± 2.1 | |

Note. The relationship for *N. incompta* has been combined with species-specific data from von Langen et al. (2005).

microenvironment, as *N. incompta* and *N. pachyderma* lack photosymbionts. In *O. universa* and *N. dutertrei* Mg/Ca ratio banding varies on a diurnal time scale, possibly mediated by mitochondrial processes (Fehrenbacher et al., 2017; Spero et al., 2015). This may also be the case for *N. incompta*.

4.2. Mg/Ca:Temperature Relationships in Ontogenetic Calcite

Despite high interindividual variability in *N. incompta* specimens cultured at a given temperature, the averages of all single-shell Mg/Ca ratios at one temperature from this study are consistent with the temperatures predicted by the von Langen et al. (2005) relationship, obtained using a solution-based methodology. This supports the observation that foraminifera analyzed by LA-ICP-MS can give results comparable to those achieved from solution measurements (Hathorne et al., 2003). All cultured neogloboquadrinids were primarily composed of ontogenetic calcite, and we suspect from descriptions of ontogeny that the previous culture-based Mg/Ca:temperature relationships for these species may hold the same inherent bias toward ontogenetic calcite (von Langen, 2001). Thus, both the Mg/Ca:temperature relationships presented here (based explicitly on ontogenetic calcite) as well as the von Langen et al. (2005) relationship may produce unrealistically cold temperatures when applied to whole shells with crusts. More robust temperature reconstructions utilizing these *N. incompta* Mg/Ca:temperature relationships may be achieved if crust calcite is excluded from analyses. In *N. pachyderma*, cultured between 6 and 12°C, Mg/Ca is higher and more sensitive to temperature than previously published relationships based on solution analyses of core tops or sediment traps (Figure 4). We hypothesize that the absence of low-Mg/Ca ratio crusts accounts for the higher Mg/Ca ratios and higher temperature sensitivity in cultured neogloboquadrinids as compared to core tops and sediment traps. Thus, the Mg/Ca:temperature relationship presented here should be applied only to the ontogenetic portion of the shell and may only be valid over the range of culture temperatures.

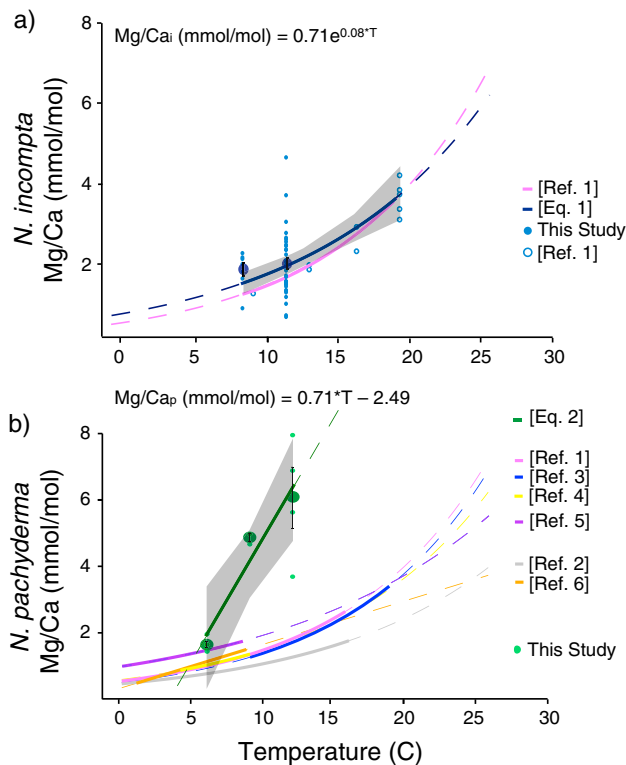


Figure 4. Neogloboquadrinid shell Mg/Ca ratios versus seawater temperature from this study, compared to published relationships. Individual specimen Mg/Ca ratios from this study are shown in small closed circles. (a) Mg/Ca ratios in *N. incompta* (9 and 12°C) from this study and from von Langen et al. (2005) (small open circles) are compared. In the latter, each point represents an analysis of 10–30 pooled chambers grown in culture. To facilitate comparison, the average (±1 standard error) of individual specimen Mg/Ca ratios at each temperature from this study are also shown (large closed circles), along with the 95% confidence interval based on the standard error of predicted values of each equation; (b) Mg/Ca ratios in *N. pachyderma* at 6, 9, and 12°C (this study) compared with published relationships for this species and one for *N. incompta* and *N. dutertrei* (von Langen et al., 2005). Key to references in legend: Ref. 1, von Langen et al. (2005); Ref. 2, Nürnberg (1995); Ref. 3, Jonkers et al. (2013); Ref. 4, Vázquez Riveiros et al. (2016); and Ref. 5, Kozdon, Eisenhauer, et al. (2009).

4.3. Application of Mg/Ca:Temperature Relationships in Ontogenetic Calcite to Fossil Neogloboquadrinids

Application of Mg/Ca:temperature relationships specific to ontogenetic calcite in fossil *N. incompta* from the Santa Barbara Basin resulted in temperatures slightly closer to those from *G. bulloides* δ¹⁸O and modern comparisons, than those from whole shell Mg/Ca ratios utilizing the von Langen et al. (2005) relationship (Table 5). The degree of crusting in *N. incompta* may be low enough in Santa Barbara Basin that application of Mg/Ca:temperature relationships based on ontogenetic calcite rather than whole shells makes little difference. However, using a Mg/Ca:temperature relationship specific to ontogenetic calcite in *N. incompta* should be considered in environments with extensive or temporally variable

Table 5
Comparison Between Average Late-Summer Temperatures at 50 m, $\delta^{18}\text{O}$ -Derived Temperatures and Mg/Ca-Derived Temperatures From *N. incompta* Obtained From Santa Barbara Basin Cores SPRO901-10BC and MV0811-15JC

| Core | Age (ka) | Temperature estimates (°C) | $\delta^{18}\text{O}$ | von Langen whole Shell (°C) | von Langen crust only (°C) | Ontogenetic only | |
|--------------|----------|----------------------------|-----------------------|-----------------------------|----------------------------|------------------|-------------------|
| | | | | | | von Langen (°C) | Equation (2) (°C) |
| SPR0901-10BC | Modern | 11 (60 m Summer) | - | 10 | 6 | 12 | 10 |
| MV0811-15JC | 7.4 | 12 | -0.13 | 10 | 6 | 13 | 12 |
| MV0811-15JC | 14.7 | 12 | -0.60 | 10 | 8 | 12 | 11 |

Note. Mg/Ca-temperature calibrations use the von Langen et al. (2005) relationship and equation (1). Oxygen isotope data are from Moffitt et al. (2014). Error on temperatures calculated using equation (1) are $\pm 0.6^\circ\text{C}$, based upon standard error around mean Mg/Ca at each treatment, averaging ± 0.4 Mg/Ca mmol/mol.

encrustation, or for analyses in which the differences between individual foraminifera (potentially with differing degrees of encrustation) could be highly significant.

Comparison of *N. pachyderma* Mg/Ca temperatures to alkenone temperatures in the Bering Sea requires an adjustment for depth and seasonality. Alkenone temperatures are assumed to reflect annual mean SST based on their calibration to this parameter. However, in the Bering Sea, high-amplitude seasonality and a short coccolithophore growing season result in alkenone-derived temperatures that are biased toward summer-fall SST (Caissie et al., 2010; Schlung et al., 2013). In the North Pacific, *N. pachyderma* records a similar late-summer seasonal signal (Jonkers & Kučera, 2015; Thunell & Honjo, 1987) but calcifies deeper in the water column (Bauch et al., 2002). The difference between the depth habitat of *N. pachyderma* and coccolithophorids is a likely cause of apparent temperature differences in the two records (Laepple & Huybers, 2013; Leduc et al., 2010; Nürnberg et al., 2000). In the Sea of Okhotsk, the maximum abundances of uncrusted *N. pachyderma*

are found at 50 m (Bauch et al., 2002), while crusted forms are observed from 50 to 150 m depth on the Japan Margin (Arikawa et al., 1983). Thus, we similarly interpret crusting as beginning at around 50 m in the Bering Sea, and ontogenetic calcite in *N. pachyderma* as forming at this or slightly shallower depths. August-September average temperatures at the core location in the modern Bering Sea range from 7–9°C at the surface to 4–5°C at 50 m, a difference of $\sim 4^\circ\text{C}$ (Locarnini et al., 2013). Under the assumption that the shallow temperature profile of the Bering Sea and the depth at which ontogenetic and crust calcite formed during the deglacial were comparable to those in the modern ocean, then the calcification temperature of *N. pachyderma* ontogenetic calcite would be $\sim \text{SST}(U_{37}^K) - 4^\circ\text{C}$.

Our ontogenetic calcite-specific Mg/Ca:temperature relationship yields temperatures indistinguishable from those at the presumed calcification depth for both Bering Sea intervals (6°C at 14.5 ka and 5°C at 17.8 ka). By contrast, while several previously published Mg/Ca:temperature relationships produce temperatures within 2°C of assumed 50 m temperature at 14.5 ka (6°C) (Jonkers et al., 2013; Nürnberg, 1995; von Langen et al., 2005), all result in lower temperatures at 17.8 ka (5°C) by 1–11°C (Figure 6) (Jonkers et al., 2013; Kozdon, Eisenhauer, et al., 2009; Nürnberg, 1995; Vázquez Riveiros et al., 2016; von Langen et al., 2005). This could be partly the result of a 10% increase in crust calcite in this interval, as described above. It is also important to note that not all Mg/Ca:temperature relationships were developed based on a North Pacific population of *N. pachyderma*, a distinction which may be important given the genetic diversity within *N. pachyderma* (Darling & Wade, 2008) and the potential for genetic influences on Mg/Ca ratios (Sadokov et al., 2016;

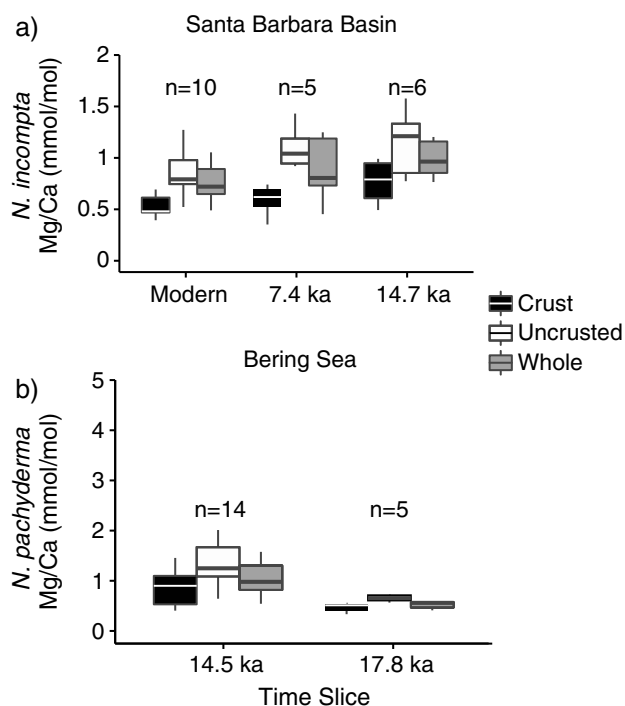


Figure 5. Mg/Ca of crusted (black) and ontogenetic (white) calcite, compared with whole shell average Mg/Ca (gray) for (a) *N. incompta* from Santa Barbara Basin cores SPRO901-10BC (modern) and MV0811-15JC (7.4 and 14.7 ka) and (b) *N. pachyderma* from Bering Sea core U1340 (14.5 and 17.8 ka). Boxes encompass the 1st and 3rd quartiles, and horizontal bars represent average Mg/Ca. *N* refers to the number of individual foraminifera analyzed.

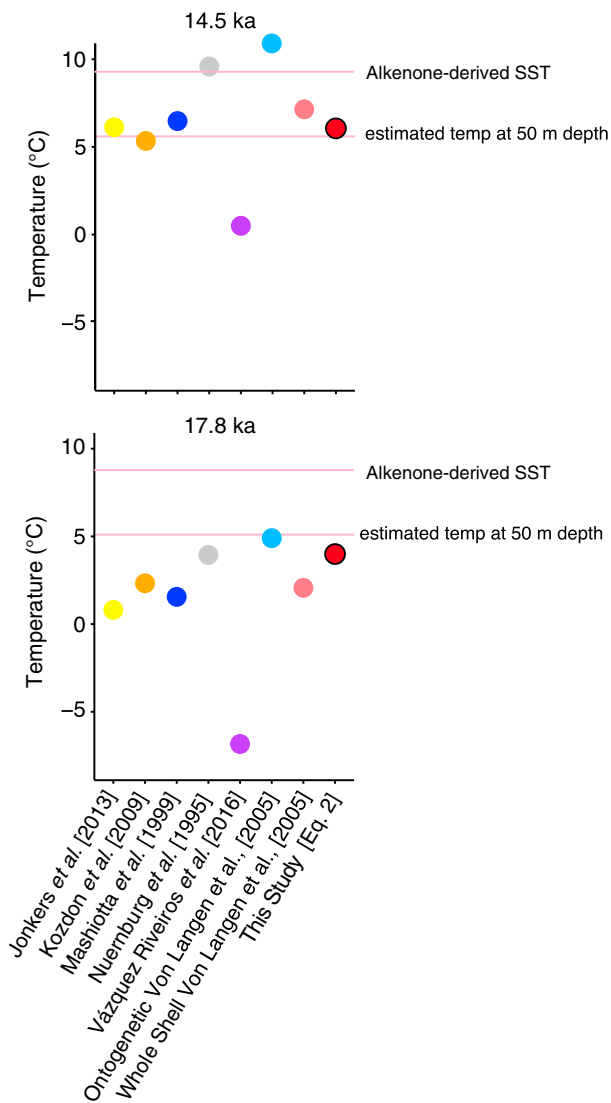


Figure 6. Temperatures calculated from the Mg/Ca:temperature relationship presented in this study (ontogenetic calcite only) and from previously published relationships (whole shells), applied to *N. pachyderma* from the Bering Sea. The von Langen et al. (2005) relationship is shown applied to both whole shell and ontogenetic calcite. The pink lines designate the alkenone-derived temperatures, and an estimated temperature at 50 m depth.

Vázquez Riveiros et al., 2016). Only the Mg/Ca:temperature relationship presented here based on ontogenetic calcite gives temperatures within 1°C of 50 m calcification temperatures and reproduces the (small) relative temperature difference between time periods (Table 6 and Figure 6). Thus, for *N. pachyderma*, application of a Mg/Ca:temperature relationship developed specifically for ontogenetic calcite may represent an important tool for some down-core temperature reconstructions.

Estimating the relative proportion of crust to ontogenetic calcite from Mg/Ca ratios is not possible by whole shell solution analyses, although crusts are detectable using SEM imaging and often light microscopy. Avoiding heavily encrusted neogloboquadrinids when selecting shells for paleothermometry and then applying a Mg/Ca:temperature relationship based on ontogenetic calcite may offer a partial solution, especially if analyses are confined to final chambers, which are often less encrusted (Steinhardt et al., 2015). Alternatively, distinguishing between crust and ontogenetic calcite using LA-ICP-MS analyses and a Mg/Ca:temperature relationship specific to calcite type is a potentially effective approach for improving Mg/Ca paleotemperature reconstructions from neogloboquadrinid foraminifera.

4.4. Crusting in the Laboratory

LA-ICP-MS analyses of *N. incompta* specimens cultured under controlled conditions show that crust calcite has relatively low-Mg/Ca ratios compared to ontogenetic calcite at constant conditions (Figures 2 and 3). This finding is consistent with recent observations from a sediment trap showing that *N. pachyderma* crust calcite has a low-Mg/Ca ratio, absent any environmental changes in the water column in which they grew (Jonkers et al., 2016). Thus, the low-Mg/Ca ratio signature of crust calcite observed in fossil neogloboquadrinids cannot be purely a temperature signal from deepwater calcification. Rather, there must be a difference in Mg/Ca:temperature sensitivity between the two calcite types (assuming that the Mg/Ca ratio in crust calcite is indeed temperature sensitive). This implies that crust thickness and its relative contribution to the whole shell Mg/Ca ratio is an important source of variability in traditional solution Mg/Ca paleothermometry using neogloboquadrinids. We note that crust growth in culture was rare and that culture calibrations tend to be biased toward the youngest chambers, which are both more likely to grow in culture and are found to be less crusted in

Table 6

Comparison Between U_{37}^k Temperatures From the Bering Sea (Mean Summer SST) (Schlung et al., 2013), U_{37}^k Temperatures Adjusted for 50 m Depth (4°C Offset; See Text) (Locarnini et al., 2013), and Mg/Ca-Derived Temperatures Obtained Using the Relationship Developed in This Study for Ontogenetic Calcite From *N. pachyderma* Ontogenetic Calcite Equation (2) and Temperatures Obtained by Applying Published Core Top Relationships to Whole Shell Average Mg/Ca

| Core | Age (ka) | U_{37}^k temp estimates (°C) | Adjusted U_{37}^k temp estimates (°C) | This study (°C) | Maximum temperature from previously published equations (°C) | Minimum temperature from previously published equations (°C) |
|-------|----------|--------------------------------|---|-----------------|--|--|
| U1340 | 14.5 | 10 | 6 | 6 | 10 (Ref. 1) | 0 (Ref. 2) |
| U1340 | 17.8 | 9 | 5 | 5 | 4 (Ref. 1) | -7 (Ref. 1) |

Note. Ref. 1, Nürnberg et al. (1996); Ref. 2, Vázquez Riveiros et al. (2016). Error on temperatures calculated using equation (2) are $\pm 1.6^\circ\text{C}$, based upon standard error around mean Mg/Ca at each treatment, averaging ± 0.2 Mg/Ca mmol/mol.

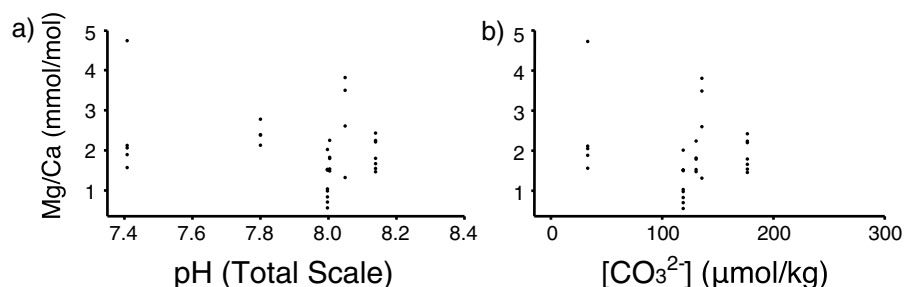


Figure 7. Mg/Ca ratios (mmol/mol) from individual specimens of *N. incompta* relative to (a) pH and (b) [CO₃²⁻] for laboratory-grown *N. incompta* calcite at 12°C. No relationship was detected between pH or [CO₃²⁻] and Mg/Ca at either temperature treatment ($p = 0.078$ and $p = 0.057$, respectively).

fossil foraminifera (Jonkers et al., 2012; Steinhardt et al., 2015). Thus, neogloboquadrinid encrustation is rare or absent for most cultured foraminifera and variable and difficult to constrain by solution analyses in core tops. This variability in the degree of encrustation present in foraminifera used for calibration will inevitably result in bias toward either warmer or colder computed temperatures when applied to shells with differing degrees of crusting.

Moreover, the rarity of crust growth in culture suggests a trigger for crusting that is not replicated in our laboratory experiments. Low temperature has been proposed as one possible trigger for some nonspinose tropical species (Hemleben et al., 1989), although argued against for *N. pachyderma* by Jonkers et al. (2016). We used a range of temperatures (6–12°C), including those typical of the cold extreme at our collection site (6°C) and observed no temperature dependence in the rare incidences of crust occurrence and therefore exclude temperature as a trigger in these species. Crusting has also been associated with reproduction in neogloboquadrinids (Arikawa, 1983), an association supported by the observation of crust addition shortly prior to gametogenesis in cultured specimens. Although all crusted foraminifera in this study did undergo gametogenesis, not all foraminifera that underwent gametogenesis formed a crust (Table 3), indicating that crusting is not obligatory for reproduction.

4.5. Ontogeny and Chamber-to-Chamber Mg/Ca Variability in Neogloboquadrinid Foraminifera

Previous studies of *G. sacculifer* (Dueñas-Bohórquez et al., 2011) and *N. dutertrei* (Jonkers et al., 2012) have identified Mg/Ca ratio shifts in successive chambers, with Mg/Ca ratios decreasing in *G. sacculifer* and increasing in *N. dutertrei* through the chamber whorl. In the current study, however, no significant Mg/Ca ratio difference was found between successive chambers grown at a single temperature (Figure 1). Thus, ontogenetic processes cannot explain the observation in fossil neogloboquadrinids of Mg/Ca ratio trends in successive chambers where reported changes in ocean-grown individual chamber Mg/Ca ratios are not explained by differential crusting and thus differing crust/ontogenetic calcite ratios across chambers.

4.6. Effect of pH or [CO₃²⁻] on Mg/Ca

Our results suggest that seawater pH or [CO₃²⁻] have a negligible effect on Mg/Ca ratios of ontogenetic calcite in neogloboquadrinid foraminifers, although we are unable to distinguish between the two parameters, as they covary in our treatments. This contrasts with the response of spinose planktic foraminifers *O. universa* and *G. bulloides* (Lea et al., 1999; Russell et al., 2004). This means that pH is not likely to be the cause of temperature bias associated with high latitudes and upwelling environments. It is possible that physiologic differences in calcification between spinose and nonspinose foraminifera control the presence or magnitude of pH effects on Mg incorporation, a hypothesis bolstered by the range of results for inorganic carbon system-dependent Mg/Ca incorporation reported across benthic foraminifera species (Dissard et al., 2010; Elderfield et al., 2006; Raitzsch et al., 2010; Rathmann & Kuhnert, 2008; Rosenthal et al., 1997; Yu & Elderfield, 2008). It is also possible that a Mg/Ca:pH relationship may exist across all planktic foraminifera but that this influence is only significant at higher temperatures than those at our collection site (8–14°C) and experiments (12°C) which were markedly lower than for previous experiments with spinose species (22°C) (Lea et al., 1999; Russell et al., 2004). In either case, our results indicate that pH and [CO₃²⁻] are not significant controls over neogloboquadrinid Mg/Ca ratios over our experimental temperature range.

5. Conclusions

We determined the relationship between temperature and Mg/Ca ratios in cultured planktic foraminifers *N. pachyderma* and *N. incompta* and found an influence of temperature in the ontogenetic calcite of both species but no relationship between Mg/Ca ratios and pH and/or $[\text{CO}_3^{2-}]$. Mg/Ca-derived temperatures based on *N. incompta* agree well with the previous culture-based Mg/Ca:temperature relationship (von Langen et al., 2005), which has been used in concert with new results to produce a species-specific relationship for *N. incompta*. The Mg/Ca ratios in ontogenetic calcite of cultured *N. pachyderma* are more sensitive to temperature than implied by published relationships based on sediment traps or core tops, due to the presence of crust calcite. We developed a new approach, applying our culture-based Mg/Ca:temperature relationships (based on ontogenetic calcite only) to the ontogenetic portion of fossil shells, identified and analyzed by LA-ICP-MS. Initial tests of this approach in fossil *N. incompta* are in agreement with $\delta^{18}\text{O}$ -temperatures derived from *G. bulloides* and with instrumental temperatures. A marked improvement is made in reconstructions using *N. pachyderma* when crust calcite is excluded, and temperature is derived from Mg/Ca ratios in ontogenetic calcite alone, using our culture-based relationships. This approach provides a potentially useful strategy for improved temperature reconstructions, with particular relevance for high-latitude regions where temperature changes reconstructed using *N. pachyderma* have previously appeared muted.

Acknowledgments

We would like to thank E. Chu, M. Claret, C. Pope, K. Duarte, D. Dann, and M. G. Susner for laboratory and field assistance and D. Pak and S. Myhre for providing fossil samples, as well as three reviewers. This work was supported by NSF OCE #1261519 (A. R., J. F., and T. H.), NSF OCE # 1444451 (T. H.). We thank the Johanna M. Resig Fellowship from the Cushman Foundation for Foraminiferal Research and UC Davis Durrell Fund for supporting research by C. V. D. All data can be found in the supporting information.

References

- Arikawa, R. (1983). Distribution and taxonomy of globigerina pachyderma (Ehrenberg) off the Sanriku coast, northeast Honshu, Japan. The science reports of the Tohoku University. *Second Series, Geology*, 53(2), 103-A20.
- Barker, S., Cacho, I., Benway, H., & Tachikawa, K. (2005). Planktonic foraminiferal Mg/Ca as a proxy for past oceanic temperatures: A methodological overview and data compilation for the Last Glacial Maximum. *Quaternary Science Reviews*, 24(7-9), 821-834. <https://doi.org/10.1016/j.quascirev.2004.07.016>
- Bauch, D., Erlenkeuser, H., Winckler, G., Pavlova, G., & Thiede, J. (2002). Carbon isotopes and habitat of polar planktic foraminifera in the Okhotsk Sea: The "carbonate ion effect" under natural conditions. *Marine Micropaleontology*, 45(2), 83-99. [https://doi.org/10.1016/S0377-8398\(02\)00038-5](https://doi.org/10.1016/S0377-8398(02)00038-5)
- Bé, A. W. H., Hemleben, C., Anderson, O. R., & Spindler, M. (1979). Chamber formation in planktonic foraminifera. *Micropaleontology*, 25(3), 294-307. <https://doi.org/10.2307/1485304>
- Bé, A., & Tolderlund, D. (1971). Distribution and ecology of living planktonic foraminifera in surface waters of the Atlantic and Indian Oceans. In *The micropaleontology of oceans* (pp. 105-149). New York: Cambridge University Press.
- Bemis, B. E., Spero, H. J., Bijma, J., & Lea, D. W. (1998). Reevaluation of the oxygen isotopic composition of planktonic foraminifera: Experimental results and revised paleotemperature equations. *Paleoceanography*, 13(2), 150-160. <https://doi.org/10.1029/98PA00070>
- Bemis, B. E., Spero, H. J., & Thunell, R. C. (2002). Using species-specific paleotemperature equations with foraminifera: A case study in the Southern California Bight. *Marine Micropaleontology*, 46(3-4), 405-430. [https://doi.org/10.1016/S0377-8398\(02\)00083-X](https://doi.org/10.1016/S0377-8398(02)00083-X)
- Bolton, A., & Marr, J. P. (2013). Trace element variability in crust-bearing and non crust-bearing *N. incompta*, P-D intergrade and *G. inflata* from the Southwest Pacific Ocean: Potential paleoceanographic implications. *Marine Micropaleontology*, 100, 21-33. <https://doi.org/10.1016/j.marmicro.2013.03.008>
- Branson, O., Read, E., Redfern, S. A. T., Rau, C., & Elderfield, H. (2015). Revisiting diagenesis on the Ontong Java Plateau: Evidence for authigenic crust precipitation in *Globorotalia tumida*. *Paleoceanography*, 30, 1490-1502. <https://doi.org/10.1002/2014PA002759>
- Caissie, B. E., Brigham-Grette, J., Lawrence, K. T., Herbert, T. D., & Cook, M. S. (2010). Last Glacial Maximum to Holocene sea surface conditions at Umnak Plateau, Bering Sea, as inferred from diatom, alkenone, and stable isotope records. *Paleoceanography*, 25, PA1206. <https://doi.org/10.1029/2008PA001671>
- Cléroux, C., Cortijo, E., Anand, P., Labeyrie, L., Bassinot, F., Caillon, N., & Duplessy, J. C. (2008). Mg/Ca and Sr/Ca ratios in planktonic foraminifera: Proxies for upper water column temperature reconstruction. *Paleoceanography*, 23, PA3214. <https://doi.org/10.1029/2007PA001505>
- Darling, K. F., Kucera, M., Kroon, D., & Wade, C. M. (2006). A resolution for the coiling direction paradox in *Neogloboquadrina pachyderma*. *Paleoceanography*, 21, PA2011. <https://doi.org/10.1029/2005PA001189>
- Darling, K. F., Kucera, M., Pudsey, C. J., & Wade, C. M. (2004). Molecular evidence links cryptic diversification in polar planktonic protists to Quaternary climate dynamics. *Proceedings of the National Academy of Sciences of the United States of America*, 101(20), 7657-7662. <https://doi.org/10.1073/pnas.0402401101>
- Darling, K. F., & Wade, C. M. (2008). The genetic diversity of planktonic foraminifera and the global distribution of ribosomal RNA genotypes. *Marine Micropaleontology*, 67(3-4), 216-238. <https://doi.org/10.1016/j.marmicro.2008.01.009>
- Davis, C. V., Russell, A. D., Gaylord, B. P., Jahncke, J., & Hill, T. M. (2016). Seasonality in planktonic foraminifera of the central California coastal upwelling region. *Biogeosciences*, 13(18), 5139-5150. <https://doi.org/10.5194/bg-13-5139-2016>
- de Nooijer, L., Spero, H., Erez, J., Bijma, J., & Reichert, G. (2014). Biomineralization in perforate foraminifera. *Earth-Science Reviews*, 135, 48-58. <https://doi.org/10.1016/j.earscirev.2014.03.013>
- Dekens, P. S., Ravelo, A. C., McCarthy, M. D., & Edwards, C. A. (2008). A 5 million year comparison of Mg/Ca and alkenone paleothermometers. *Geochemistry, Geophysics, Geosystems*, 9, Q10001. <https://doi.org/10.1029/2007GC001931>
- Dieckmann, G. S., Spindler, M., Lange, M. A., Ackley, S. F., & Eicken, H. (1991). Antarctic sea ice: A habitat for the foraminifer *Neogloboquadrina pachyderma*. *Journal of Foraminiferal Research*, 21(2), 182-189. <https://doi.org/10.2113/gsjfr.21.2.182>
- Dissard, D., Nehrkne, G., Reichert, G. J., & Bijma, J. (2010). Impact of seawater pCO₂ on calcification and Mg/Ca and Sr/Ca ratios in benthic foraminifera calcite: Results from culturing experiments with *Ammonia tepida*. *Biogeosciences*, 7(1), 81-93. <https://doi.org/10.5194/bg-7-81-2010>
- Dueñas-Bohórquez, A., da Rocha, R. E., Kuroyanagi, A., de Nooijer, L. J., Bijma, J., & Reichert, G.-J. (2011). Interindividual variability and ontogenetic effects on Mg and Sr incorporation in the planktonic foraminifer *Globigerinoides sacculifer*. *Geochimica et Cosmochimica Acta*, 75(2), 520-532. <https://doi.org/10.1016/j.gca.2010.10.006>

- Eggins, S. M., Sadekov, A., & de Deckker, P. (2004). Modulation and daily banding of Mg/Ca in *Orbulina universa* tests by symbiotic photosynthesis and respiration: A complication for seawater thermometry? *Earth and Planetary Science Letters*, 225(3-4), 411–419. <https://doi.org/10.1016/j.epsl.2004.06.019>
- Elderfield, H., & Ganssen, G. (2000). Past temperature and $\delta^{18}\text{O}$ of surface ocean waters inferred from foraminiferal Mg/Ca ratios. *Nature*, 405(6785), 442–445. <https://doi.org/10.1038/35013033>
- Elderfield, H., Yu, J., Anand, P., Kiefer, T., & Nyland, B. (2006). Calibrations for benthic foraminiferal Mg/Ca paleothermometry and the carbonate ion hypothesis. *Earth and Planetary Science Letters*, 250(3-4), 633–649. <https://doi.org/10.1016/j.epsl.2006.07.041>
- Evans, D., Brierley, C., Raymo, M. E., Erez, J., & Müller, W. (2016). Planktic foraminifera shell chemistry response to seawater chemistry: Pliocene–Pleistocene seawater Mg/Ca, temperature and sea level change. *Earth and Planetary Science Letters*, 438, 139–148. <https://doi.org/10.1016/j.epsl.2016.01.013>
- Eynaud, F. (2011). Planktonic foraminifera in the Arctic: Potentials and issues regarding modern and quaternary populations. In *Proceedings IOP Conference Series: Earth and Environmental Science* (Vol. 14, 012005). Bristol, UK: IOP.
- Eynaud, F., Cronin, T., Smith, S., Zaragosi, S., Mavel, J., Mary, Y., ... Pujol, C. (2009). Morphological variability of the planktonic foraminifer *Neogloboquadrina pachyderma* from ACEX cores: Implications for Late Pleistocene circulation in the Arctic Ocean. *Micropaleontology*, 55(2), 101–116.
- Fehrenbacher, J. S., & Martin, P. (2010). Mg/Ca variability of the planktonic foraminifera *G. ruber* s.s. and *N. dutertrei* from shallow and deep cores determined by electron microprobe image mapping. *Environmental Earth Sciences*, 9, 012018.
- Fehrenbacher, J. S., Russell, A. D., Davis, C. V., Gagnon, A. C., Spero, H. J., Cliff, J. B., ... Martin, P. (2017). Link between light-triggered Mg-banding and chamber formation in the planktic foraminifera *Neogloboquadrina dutertrei*. *Nature Communications*, 8, 15441. <https://doi.org/10.1038/ncomms15441>
- Fehrenbacher, J. S., Spero, H. J., Russell, A. D., Vetter, L., & Eggins, S. (2015). Optimizing LA-ICP-MS analytical procedures for elemental depth profiling of foraminifera shells. *Chemical Geology*, 407, 2–9.
- Field, D. B. (2004). Variability in vertical distributions of planktonic foraminifera in the California Current: Relationships to vertical ocean structure. *Paleocyanography*, 19, PA2014. <https://doi.org/10.1029/2003PA000970>
- Hathorne, E. C., Alard, O., James, R. H., & Rogers, N. W. (2003). Determination of intratest variability of trace elements in foraminifera by laser ablation inductively coupled plasma-mass spectrometry. *Geochemistry, Geophysics, Geosystems*, 4(12), 8408. <https://doi.org/10.1029/2003GC000539>
- Hemleben, C., Spindler, M., & Erson, O. (1989). *Modern planktonic foraminifera*. Berlin: Springer. <https://doi.org/10.1007/978-1-4612-3544-6>
- Hendry, K. R., Rickaby, R. E. M., Meredith, M. P., & Elderfield, H. (2009). Controls on stable isotope and trace metal uptake in *Neogloboquadrina pachyderma* (sinistral) from an Antarctic sea-ice environment. *Earth and Planetary Science Letters*, 278(1-2), 67–77. <https://doi.org/10.1016/j.epsl.2008.11.026>
- Hönisch, B., Allen, K. A., Lea, D. W., Spero, H. J., Eggins, S. M., Arbuszewski, J., ... Russell, A. D. (2013). The influence of salinity on Mg/Ca ratios of cultured and core-top planktic foraminifera. *Geochimica et Cosmochimica Acta*, 121, 196–213. <https://doi.org/10.1016/j.gca.2013.07.028>
- Jonkers, L., Buse, B., Brummer, G.-J., & Hall, I. R. (2016). Chamber formation leads to Mg/Ca banding in the planktonic foraminifera *Neogloboquadrina pachyderma*. *Earth and Planetary Science Letters*, 451, 177–184. <https://doi.org/10.1016/j.epsl.2016.07.030>
- Jonkers, L., Jiménez-Amat, P., Mortyn, P. G., & Brummer, G.-J. (2013). Seasonal Mg/Ca variability of *N. pachyderma* (s) and *G. bulloides*: Implications for seawater temperature reconstruction. *Earth and Planetary Science Letters*, 376, 137–144. <https://doi.org/10.1016/j.epsl.2013.06.019>
- Jonkers, L., & Kučera, M. (2015). Global analysis of seasonality in the shell flux of extant planktonic foraminifera. *Biogeosciences*, 12(7), 2207–2226. <https://doi.org/10.5194/bg-12-2207-2015>
- Jonkers, L., De Nooijer, L. J., Reichart, G. J., Zahn, R., & Brummer, G. J. (2012). Encrustation and trace element composition of *Neogloboquadrina dutertrei* assessed from single chamber analyses—implications for paleotemperature estimates. *Biogeosciences*, 9(11), 4851–4860.
- Kincaid, E., Thunell, R. C., Le, J., Lange, C. B., Weinheimer, A. L., & Reid, F. M. (2000). Planktonic foraminiferal fluxes in the Santa Barbara Basin: Response to seasonal and interannual hydrographic changes. *Deep Sea Research Part II: Topical Studies in Oceanography*, 47(5-6), 1157–1176. [https://doi.org/10.1016/S0967-0645\(99\)00140-X](https://doi.org/10.1016/S0967-0645(99)00140-X)
- Kohfeld, K. E., Fairbanks, R. G., Smith, S. L., & Walsh, I. D. (1996). *Neogloboquadrina pachyderma* (sinistral coiling) as paleocyanographic tracers in polar oceans: Evidence from northeast water polynya plankton tows, sediment traps, and surface sediments. *Paleocyanography*, 11(6), 679–699. <https://doi.org/10.1029/96PA02617>
- Kozdon, R., Eisenhauer, A., Weinelt, M., Meland, M. Y., & Nürnberg, D. (2009). Reassessing Mg/Ca temperature calibrations of *Neogloboquadrina pachyderma* (sinistral) using paired $\delta^{44/40}\text{Ca}$ and Mg/Ca measurements. *Geochemistry, Geophysics, Geosystems*, 10, Q03005. <https://doi.org/10.1029/2008GC002169>
- Kozdon, R., Ushikubo, T., Kita, N., Spicuzza, M., & Valley, J. (2009). Intratest oxygen isotope variability in the planktonic foraminifer *N. pachyderma*: Real vs. apparent vital effects by ion microprobe. *Chemical Geology*, 258(3-4), 327–337. <https://doi.org/10.1016/j.chemgeo.2008.10.032>
- Laepple, T., & Huybers, P. (2013). Reconciling discrepancies between U_{37} and Mg/Ca reconstructions of Holocene marine temperature variability. *Earth and Planetary Science Letters*, 375, 418–429. <https://doi.org/10.1016/j.epsl.2013.06.006>
- Lea, D. W., Martin, P. A., Pak, D. K., & Spero, H. J. (2002). Reconstructing a 350 ky history of sea level using planktonic Mg/Ca and oxygen isotope records from a Cocos Ridge core. *Quaternary Science Reviews*, 21(1-3), 283–293. [https://doi.org/10.1016/S0277-3791\(01\)00081-6](https://doi.org/10.1016/S0277-3791(01)00081-6)
- Lea, D. W., Mashiotto, T. A., & Spero, H. J. (1999). Controls on magnesium and strontium uptake in planktonic foraminifera determined by live culturing. *Geochimica et Cosmochimica Acta*, 63(16), 2369–2379. [https://doi.org/10.1016/S0016-7037\(99\)00197-0](https://doi.org/10.1016/S0016-7037(99)00197-0)
- Leduc, G., Schneider, R., Kim, J.-H., & Lohmann, G. (2010). Holocene and Eemian sea surface temperature trends as revealed by alkenone and Mg/Ca paleothermometry. *Quaternary Science Reviews*, 29(7-8), 989–1004. <https://doi.org/10.1016/j.quascirev.2010.01.004>
- Locarnini, R., Mishonov, A., Antonov, J., Boyer, T., Garcia, H., Baranova, O., & Johnson, D. (2013). World ocean atlas 2013, volume 1: Temperature: NOAA Atlas NESDIS, 73 (40 pp.).
- Mashiotto, T. A., Lea, D. W., & Spero, H. J. (1999). Glacial–interglacial changes in Subantarctic sea surface temperature and $\delta^{18}\text{O}$ -water using foraminiferal Mg. *Earth and Planetary Science Letters*, 170(4), 417–432. [https://doi.org/10.1016/S0012-821X\(99\)00116-8](https://doi.org/10.1016/S0012-821X(99)00116-8)
- Millero, F. J. (2010). Carbonate constants for estuarine waters. *Marine and Freshwater Research*, 61(2), 139–142. <https://doi.org/10.1071/MF09254>
- Moffitt, S. E., Hill, T. M., Ohkushi, K., Kennett, J. P., & Behl, R. J. (2014). Vertical oxygen minimum zone oscillations since 20 ka in Santa Barbara Basin: A benthic foraminiferal community perspective. *Paleocyanography*, 29, 44–57. <https://doi.org/10.1002/2013PA002483>
- Naidu, P. D., & Malmgren, B. A. (1996). Relationship between late Quaternary upwelling history and coiling properties of *Neogloboquadrina pachyderma* and *Globigerina bulloides* in the Arabian Sea. *Journal of Foraminiferal Research*, 26(1), 64–70. <https://doi.org/10.2113/gsjfr.26.1.64>

- Nürnberg, D. (1995). Magnesium in tests of *Neogloboquadrina pachyderma* sinistral from high northern and southern latitudes. *Journal of Foraminiferal Research*, 25(4), 350–368. <https://doi.org/10.2113/gsjfr.25.4.350>
- Nürnberg, D., Bijma, J., & Hemleben, C. (1996). Assessing the reliability of magnesium in foraminiferal calcite as a proxy for water mass temperatures. *Geochimica et Cosmochimica Acta*, 60(5), 803–814. [https://doi.org/10.1016/0016-7037\(95\)00446-7](https://doi.org/10.1016/0016-7037(95)00446-7)
- Nürnberg, D., Müller, A., & Schneider, R. (2000). Paleo-sea surface temperature calculations in the equatorial east Atlantic from Mg/Ca ratios in planktic foraminifera: A comparison to sea surface temperature estimates from U_{37}^{K} oxygen isotopes, and foraminiferal transfer function. *Paleoceanography*, 15(1), 124–134. <https://doi.org/10.1029/1999PA000370>
- Raitzsch, M., Dueñas-Bohórquez, A., Reichart, G.-J., de Nooijer, L. J., & Bickert, T. (2010). Incorporation of Mg and Sr in calcite of cultured benthic foraminifera: Impact of calcium concentration and associated calcite saturation state. *Biogeosciences*, 7(3), 869–881. <https://doi.org/10.5194/bg-7-869-2010>
- Rathmann, S., & Kuhnert, H. (2008). Carbonate ion effect on Mg/Ca, Sr/Ca and stable isotopes on the benthic foraminifera *Oridorsalis umbonatus* off Namibia. *Marine Micropaleontology*, 66(2), 120–133. <https://doi.org/10.1016/j.marmicro.2007.08.001>
- R Core Team (2013). *A language and environment for statistical computing*. Vienna, Austria: R Foundation.
- Robbins, L.L., Hansen, M.E., Kleypas, J.A., & Meylan, S.C. (2010). CO2calc—A user-friendly seawater carbon calculator for Windows, Max OS X, and iOS (iPhone).
- Rosenthal, Y., Boyle, E. A., & Slowey, N. (1997). Temperature control on the incorporation of magnesium, strontium, fluorine, and cadmium into benthic foraminiferal shells from Little Bahama Bank: Prospects for thermocline paleoceanography. *Geochimica et Cosmochimica Acta*, 61(17), 3633–3643. [https://doi.org/10.1016/S0016-7037\(97\)00181-6](https://doi.org/10.1016/S0016-7037(97)00181-6)
- Russell, A. D., Hönisch, B., Spero, H. J., & Lea, D. W. (2004). Effects of seawater carbonate ion concentration and temperature on shell U, Mg, and Sr in cultured planktonic foraminifera. *Geochimica et Cosmochimica Acta*, 68(21), 4347–4361. <https://doi.org/10.1016/j.gca.2004.03.013>
- Sadekov, A., Eggins, S. M., de Deckker, P., Ninnemann, U., Kuhnt, W., & Bassinot, F. (2009). Surface and subsurface seawater temperature reconstruction using Mg/Ca microanalysis of planktonic foraminifera *Globigerinoides ruber*, *Globigerinoides sacculifer*, and *Pulleniatina obliquiloculata*. *Paleoceanography*, 24, PA3201. <https://doi.org/10.1029/2008PA001664>
- Sadekov, A. Y., Darling, K. F., Ishimura, T., Wade, C. M., Kimoto, K., Singh, A. D., ... Ganeshram, R. (2016). Geochemical imprints of genotypic variants of *Globigerina bulloides* in the Arabian Sea. *Paleoceanography*, 31, 1440–1452. <https://doi.org/10.1002/2016PA002947>
- Sadekov, A. Y., Eggins, S. M., & de Deckker, P. (2005). Characterization of Mg/Ca distributions in planktonic foraminifera species by electron microprobe mapping. *Geochemistry, Geophysics, Geosystems*, 6, Q12P06. <https://doi.org/10.1029/2005GC000973>
- Schlung, S. A., Christina Ravelo, A., Aiello, I. W., Andreasen, D. H., Cook, M. S., Drake, M., ... Stroynowski, Z. (2013). Millennial-scale climate change and intermediate water circulation in the Bering Sea from 90 ka: A high-resolution record from IODP Site U1340. *Paleoceanography*, 28, 54–67. <https://doi.org/10.1029/2012PA002365>
- Schmidt, M. W., Spero, H. J., & Lea, D. W. (2004). Links between salinity variation in the Caribbean and North Atlantic thermohaline circulation. *Nature*, 428(6979), 160–163. <https://doi.org/10.1038/nature02346>
- Spero, H. J., Eggins, S. M., Russell, A. D., Vetter, L., Kilburn, M. R., & Hönisch, B. (2015). Timing and mechanism for intratest Mg/Ca variability in a living planktic foraminifer. *Earth and Planetary Science Letters*, 409, 32–42. <https://doi.org/10.1016/j.epsl.2014.10.030>
- Spindler, M., & Dieckmann, G. S. (1986). Distribution and abundance of the planktic foraminifer *Neogloboquadrina pachyderma* in sea ice of the Weddell Sea (Antarctica). *Polar Biology*, 5(3), 185–191. <https://doi.org/10.1007/BF00441699>
- Steinhardt, J., de Nooijer, L. L. J., Brummer, G.-J., & Reichart, G.-J. (2015). Profiling planktonic foraminiferal crust formation. *Geochemistry, Geophysics, Geosystems*, 16(7), 2409–2430. <https://doi.org/10.1002/2015GC005752>
- Stott, L., Cannariato, K., Thunell, R. C., Haug, G. H., Koutavas, A., & Lund, S. (2004). Decline of surface temperature and salinity in the western tropical Pacific Ocean in the Holocene epoch. *Nature*, 431(7004), 56–59. <https://doi.org/10.1038/nature02903>
- Thunell, R. C., & Honjo, S. (1987). Seasonal and interannual changes in planktonic foraminiferal production in the North Pacific. *Nature*, 328(6128), 335–337. <https://doi.org/10.1038/328335a0>
- Tripathi, A. K., Delaney, M. L., Zachos, J. C., Anderson, L. D., Kelly, D. C., & Elderfield, H. (2003). Tropical sea-surface temperature reconstruction for the early Paleogene using Mg/Ca ratios of planktonic foraminifera. *Paleoceanography*, 18(4), 1101. <https://doi.org/10.1029/2003PA000937>
- Vázquez Riveiros, N., Govin, A., Waelbroeck, C., Mackensen, A., Michel, E., Moreira, S., ... Brandon, M. (2016). Mg/Ca thermometry in planktic foraminifera: Improving paleotemperature estimations for *G. bulloides* and *N. pachyderma* left. *Geochemistry, Geophysics, Geosystems*, 17, 1249–1264. <https://doi.org/10.1002/2015GC006234>
- von Langen, P. J. (2001). Non-spinose planktonic foraminifera (*Neogloboquadrina pachyderma*) cultured for geochemical and paleoceanographic applications (PhD thesis). Santa Barbara: University of California at Santa Barbara.
- von Langen, P. J., Pak, D. K., Spero, H. J., & Lea, D. W. (2005). Effects of temperature on Mg/Ca in neogloboquadrinid shells determined by live culturing. *Geochemistry, Geophysics, Geosystems*, 6, Q10P03. <https://doi.org/10.1029/2005GC000989>
- Yu, J., & Elderfield, H. (2008). Mg/Ca in the benthic foraminifera *Cibicides wuellerstorfi* and *Cibicides mundulus*: Temperature versus carbonate ion saturation. *Earth and Planetary Science Letters*, 276(1–2), 129–139. <https://doi.org/10.1016/j.epsl.2008.09.015>

Paleoceanography

Supporting Information for
Relationships between Temperature, pH, and Crusting on Mg/Ca Ratios in Laboratory-
Grown *Neogloboquadrina* Foraminifera

Authors: Catherine V. Davis^{a,b*}, Jennifer S. Fehrenbacher^{a,c}, Tessa M. Hill^{a,b}, Ann D.
Russell^a, Howard J. Spero^a

*Corresponding Author: cvdavis@seoe.sc.edu; School of the Earth, Ocean and
Environment, University of South Carolina, Columbia, SC, USA

^aDepartment of Earth & Planetary Sciences, University of California, Davis, CA, USA

^bBodega Marine Laboratory, University of California at Davis, Bodega Bay, CA, USA

^cCollege of Earth, Ocean and Atmosphere, Oregon State University, Corvallis, OR, USA

Contents of this file

Captions for Tables S1 and S2

Table S2

Captions for Figures S1, S2, and S3

Figures S1, S2, and S3

Additional Supporting Information (Files uploaded separately)

Table S1

Table S1. Seawater parameters and Mg/Ca in cultured foraminifera, including Mg/Ca ratios for each chamber and a chamber average for each individual shell. Blank cells indicate data, which was not collected or did not meet standards of quality control and has not been included in any analyses. This table has been included as a separate file due to size.

Table S2. Average Mg/Ca and standard deviation of *N. incompta* at multiple pH at a single temperature.

| Species | pH | Average Mg/Ca (mmol/mol) | N |
|----------------------------|-----------|---------------------------------|----------|
| <i>N. incompta</i> (12 °C) | 7.4 | 2.5±1.2 | 6 |
| | 7.8 | 2.4±0.3 | 4 |
| | 8.0 | 1.4±0.5 | 14 |
| | 8.1 | 2.3±1.0 | 5 |
| | 8.1 | 2.0±0.6 | 7 |

Figure S1. Relationships found in this study between temperature and Mg/Ca for *N. pachyderma* and *N. incompta* shown with solid lines (confidence interval envelope = 95%) over the temperatures at which these were calibrated, as well as average Mg/Ca at each calibration temperature and standard error. In the case of *N. incompta*, the relationship is derived from a combination of new results from this study (shown) as well as species-specific data from von Langen et al., [2005].

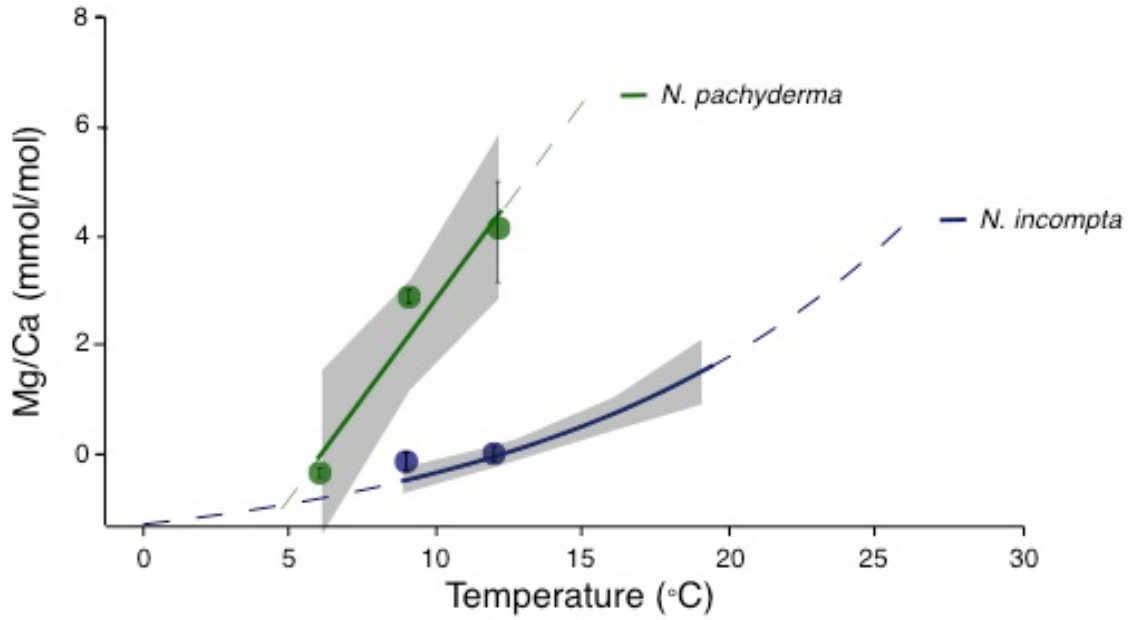


Figure S2 SEMs of fossil *N. pachyderma* from the Bering Sea showing a) a representative *N. pachyderma* shell from these samples and b) a shell fragment containing a section in which ontogenic calcite has been stripped away. Such areas were identifiable by LA-ICP-MS as well as by SEM and light microscopy when shells were broken.

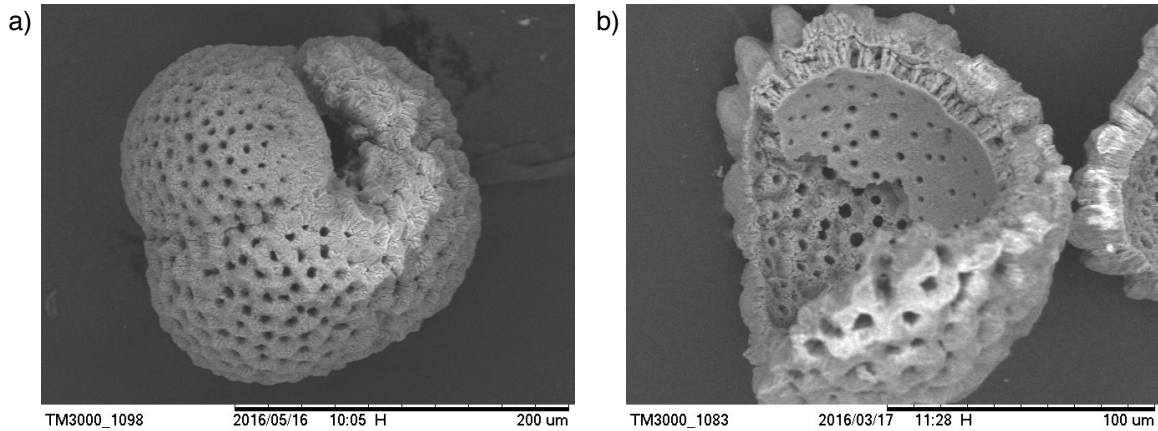


Figure S3. SEMs of a) and b) *N. incompta* which added a new chamber and a crust at 12 °C in culture and c) and d) fossil *N. incompta* from Santa Barbara Basin which grew all chambers and a crust in the field.

