

UCSF

UC San Francisco Previously Published Works

Title

Bedaquiline resistance in patients with drug-resistant tuberculosis in Cape Town, South Africa: a retrospective longitudinal cohort study

Permalink

<https://escholarship.org/uc/item/60m3z6gr>

Journal

The Lancet Microbe, 4(12)

ISSN

2666-5247

Authors

Derendinger, Brigitta
Dippenaar, Anzaan
de Vos, Margaretha
[et al.](#)

Publication Date

2023-12-01

DOI

10.1016/s2666-5247(23)00172-6

Peer reviewed



Published in final edited form as:

Lancet Microbe. 2023 December ; 4(12): e972–e982. doi:10.1016/S2666-5247(23)00172-6.

Bedaquiline resistance in patients with drug-resistant tuberculosis in Cape Town, South Africa: a retrospective longitudinal cohort study

Brigitta Derendinger^{*},

Anzaan Dippenaar^{*},

Margaretha de Vos^{*},

Stella Huo,

Rencia Alberts,

Rebecca Tadokera,

Jason Limberis,

Frik Sirgel,

Tania Dolby,

Claudia Spies,

Anja Reuter,

Megan Folkerts,

Christopher Allender,

Darrin Lemmer,

Annelies Van Rie,

This is an Open Access article under the CC BY-NC-ND 4.0 license.

Correspondence to: Prof Grant Theron, DSI-NRF Centre of Excellence for Biomedical Tuberculosis Research, SAMRC Centre for Tuberculosis Research, Division of Molecular Biology and Human Genetics, Faculty of Medicine and Health Sciences, Stellenbosch University, Cape Town 7505, South Africa, gtheron@sun.ac.za.

*Joint first authors

Contributors

BD, AD, and MdV did the conceptualisation, data curation, formal analysis, investigation, methodology, project administration, validation, visualisation, and writing of the original draft. SH did the formal analysis and visualisation. RA, RT, and CS did the investigation and methodology. JL, MF, CA, and DL did the formal analysis, investigation, methodology, validation, and visualisation. FS did the formal analysis, investigation, and methodology. TD did the data curation and project administration. AR and JtR did the project administration and were responsible for resources. AVR and SG did the funding acquisition and supervision. LR did the conceptualisation and supervision. KD was responsible for resources. DE did the funding acquisition, supervision, and validation, and was responsible for resources. RW and HC did the conceptualisation, funding acquisition, supervision, and validation, and were responsible for resources. JM did the funding acquisition and was responsible for resources. GT did the conceptualisation, formal analysis, funding acquisition, and supervision, and was responsible for resources. BD and GT accessed and verified all the data in this study. All authors contributed to, reviewed, edited, and approved the final manuscript, and had final responsibility for the decision to submit for publication.

Declaration of interests

We declare no competing interests.

See **Online** for appendix 2

See **Comment** page e964

For **UGAP** see <https://github.com/jasonsahl/UGAP>

For **svTyper** see <https://github.com/SemiQuant/svTyper.git>

See **Online** for appendix 1

For the **latest version of Amplicon Sequencing Analysis Pipeline** see <https://github.com/TGenNorth/ASAP>

Sebastien Gagneux,
Leen Rigouts,
Julian te Riele,
Keertan Dheda,
David M Engelthaler,
Robin Warren,
John Metcalfe,
Helen Cox,
Grant Theron

DSI-NRF Centre of Excellence for Biomedical Tuberculosis Research, SAMRC Centre for Tuberculosis Research, Division of Molecular Biology and Human Genetics, Faculty of Medicine and Health Sciences, Stellenbosch University, Cape Town, South Africa (B Derendinger PhD, A Dippenaar PhD, M de Vos PhD, R Alberts BSc, R Tadokera PhD, F Sirgel PhD, C Spies N Dip Med Tech, Prof R Warren PhD, Prof G Theron PhD); FIND, Geneva, Switzerland (M de Vos); Family Medicine and Population Health, Faculty of Medicine and Health Sciences, University of Antwerp, Antwerp, Belgium (Prof A Van Rie PhD, A Dippenaar); Department of Mycobacteriology, Institute of Tropical Medicine, Antwerp, Belgium (Prof L Rigouts PhD, A Dippenaar); Department of Biomedical Sciences, University of Antwerp, Antwerp, Belgium (Prof L Rigouts); Natera, San Carlos, CA, USA (S Huo MS); Division of Pulmonary and Critical Care Medicine, Zuckerberg San Francisco General Hospital and Trauma Center, University of California San Francisco, CA, USA (J Limberis PhD, Prof J Metcalfe MD PhD); National Health Laboratory Services Green Point, Cape Town, South Africa (T Dolby N Dip Med Tech Micro); Médecins Sans Frontières, Khayelitsha, South Africa (A Reuter MBChB); Translational Genomics Research Institute, Flagstaff, AZ, USA (M Folkerts MS, C Allender MS, D Lemmer MS, Prof D Engelthaler PhD); Swiss Tropical and Public Health Institute, Allschwil, Switzerland (Prof S Gagneux PhD); University of Basel, Basel, Switzerland (Prof S Gagneux); Brooklyn Chest Hospital, Cape Town, South Africa (J te Riele MMed); Division of Pulmonology, Department of Medicine, Centre for Lung Infection and Immunity, University of Cape Town Lung Institute, Cape Town, South Africa (Prof K Dheda PhD); Centre for the Study of Antimicrobial Resistance, South African Medical Research Council, Cape Town, South Africa (Prof K Dheda); Department of Infection Biology, Faculty of Infectious and Tropical Diseases, London School of Hygiene and Tropical Medicine, London, UK (Prof K Dheda); Division of Medical Microbiology, Department of Pathology, University of Cape Town, Cape Town, South Africa (Prof H Cox PhD); Institute of Infectious Disease and Molecular Medicine and Wellcome Centre for Infectious Disease Research, University of Cape Town, South Africa (Prof H Cox)

Summary

Background—Bedaquiline is a life-saving tuberculosis drug undergoing global scale-up. People at risk of weak tuberculosis drug regimens are a priority for novel drug access despite the potential source of *Mycobacterium tuberculosis*-resistant strains. We aimed to characterise bedaquiline resistance in individuals who had sustained culture positivity during bedaquiline-based treatment.

Methods—We did a retrospective longitudinal cohort study of adults (aged 18 years) with culture-positive pulmonary tuberculosis who received at least 4 months of a bedaquiline-

containing regimen from 12 drug-resistant tuberculosis treatment facilities in Cape Town, South Africa, between Jan 20, 2016, and Nov 20, 2017. Sputum was programmatically collected at baseline (ie, before bedaquiline initiation) and each month to monitor treatment response per the national algorithm. The last available isolate from the sputum collected at or after 4 months of bedaquiline was designated the follow-up isolate. Phenotypic drug susceptibility testing for bedaquiline was done on baseline and follow-up isolates in MGIT960 media (WHO-recommended critical concentration of 1 µg/mL). Targeted deep sequencing for *Rv0678*, *atpE*, and *pepQ*, as well as whole-genome sequencing were also done.

Findings—In total, 40 (31%) of 129 patients from an estimated pool were eligible for this study. Overall, three (8%) of 38 patients assessable by phenotypic drug susceptibility testing for bedaquiline had primary resistance, 18 (47%) gained resistance (acquired or reinfection), and 17 (45%) were susceptible at both baseline and follow-up. Several *Rv0678* and *pepQ* single-nucleotide polymorphisms and indels were associated with resistance. Although variants occurred in *Rv0676c* and *Rv1979c*, these variants were not associated with resistance. Targeted deep sequencing detected low-level variants undetected by whole-genome sequencing; however, none were in genes without variants already detected by whole-genome sequencing. Patients with baseline fluoroquinolone resistance, clofazimine exposure, and four or less effective drugs were more likely to have bedaquiline-resistant gain. Resistance gain was primarily due to acquisition; however, some reinfection by resistant strains occurred.

Interpretation—Bedaquiline-resistance gain, for which we identified risk factors, was common in these programmatically treated patients with sustained culture positivity. Our study highlights risks associated with implementing life-saving new drugs and shows evidence of bedaquiline-resistance transmission. Routine drug susceptibility testing should urgently accompany scale-up of new drugs; however, rapid drug susceptibility testing for bedaquiline remains challenging given the diversity of variants observed.

Funding—Doris Duke Charitable Foundation, US National Institute of Allergy and Infectious Diseases, South African Medical Research Council, National Research Foundation, Research Foundation Flanders, Stellenbosch University Faculty of Medicine Health Sciences, South African National Research Foundation, Swiss National Science Foundation, and Wellcome Trust.

Introduction

Tuberculosis is an ongoing health crisis. Drug-resistant tuberculosis is difficult to diagnose and treat.¹ Bedaquiline, a novel WHO-endorsed tuberculosis drug introduced for compassionate use in South Africa in 2012 because of few other treatment options,² is now a part of all standard drug-resistant tuberculosis regimens globally.

Phenotypic drug susceptibility testing for bedaquiline should be done before patients are started on a bedaquiline-containing regimen to monitor resistance emergence.³ However, programmatic implementation of bedaquiline drug susceptibility testing has lagged because of weak laboratory infrastructure and a lack of technical expertise and easily implementable assays. This delay is alarming given the occurrence of variants in bedaquiline candidate resistance genes existing before bedaquiline's availability,⁴ bedaquiline's initial

prioritisation for patients with high levels of resistance to other drugs,⁵ and bedaquiline-resistance emergence post-treatment cessation.⁶

Unsurprisingly, programmatic bedaquiline resistance has been documented in Germany, China, and Pakistan, with acquisition at rates ranging between 3% and 17%.^{7,8} Furthermore, in South Africa, a study of a nationally representative sample of 3005 isolates from patients receiving bedaquiline found 199 (7%) to have phenotypic resistance, far exceeding rates in clinical trials.^{9,10}

Reduced bedaquiline susceptibility might be due to variants in the candidate resistance genes *Rv0678*, *atpE*, and *pepQ*. Mutations in *Rv0678* are associated with clofazimine resistance,¹¹ and some isolates with elevated minimal inhibitory concentrations to bedaquiline have not shown resistance-associated variants in any of these genes. The consequence of other bacterial genes such as *Rv0676c* (*MmpL5*), *Rv0677c* (*MmpS5*), and *Rv1979c* is unknown.^{12,13} Our understanding of genotypic mechanisms of resistance is, however, far from complete.

Not only are more data for variants associated with phenotypic resistance needed, but current data are scarce for bedaquiline-resistance emergence during treatment in which multiple isolates are analysed from the same individuals. This concern is especially important in people in whom resistance is more likely to emerge (eg, in a programmatic rather than a clinical trial context). Such individuals could include those with resistance to many second-line drugs who, despite being, on a population-level, a minority receiving bedaquiline (most patients do not receive bedaquiline), could inadvertently serve as a source of population-level bedaquiline-resistance transmission.¹¹ These patients do not always rapidly clinically or bacteriologically respond positively: programmatic data from inpatients with second-line resistance in Cape Town, South Africa, show that 30% receiving bedaquiline as part of their regimens remain culture positive after 4 months of treatment.¹⁴ This study population is similar to the population in our current study in terms of patients who were in a hospital specialising in drug resistance in Cape Town (where many of our patients originated from), the study period overlapped somewhat (2014–19), and importantly the eligibility criteria of who received bedaquiline was the same or similar. In this study, we aimed to characterise bedaquiline resistance in people who had sustained culture positivity during bedaquiline-based treatment.

Methods

Study population and patient data collection

In this retrospective longitudinal cohort study, we retrospectively identified adults (aged 18 years) with culture-positive pulmonary tuberculosis who received at least 4 months of a bedaquiline-containing regimen from 12 drug-resistant tuberculosis treatment facilities (as inpatients at Brooklyn Chest Hospital or Khayelitsha Day Hospital or outpatients from surrounding facilities) in Cape Town, South Africa, between Jan 20, 2016, and Nov 20, 2017 (figure 1A). Sputum was programmatically collected at baseline and each month to monitor treatment response per the national algorithm.¹⁵ The last available isolate from the sputum collected at or after 4 months of bedaquiline was designated the follow-up isolate.

We included patients who had both a post-4-month isolate and a pre-bedaquiline treatment initiation (ie, baseline) isolate stored in a biobank. We excluded patients without such isolates, not on a bedaquiline regimen, or minors (aged <18 years). Our study took place in the period before all oral regimens were being recommended for patients with drug-resistant tuberculosis.

This study was approved by the Stellenbosch University Health Research Ethics Committee (N09/11/296; N16/04/045), Western Cape Health Research Committee (WC_2016RP18_637), University of California San Francisco Human Research Protection Program (14–15090), and the University of Cape Town Human Research Ethics Committee (416/2014).

Procedures

We extracted patient demographic and clinical data, including previous and current tuberculosis treatment regimen and follow-up, from clinical records. Treatment outcome data were reported using WHO definitions for drug-resistant tuberculosis.¹⁶

Phenotypic drug susceptibility testing for bedaquiline was done on baseline and follow-up isolates in mycobacterial growth indicator tube (MGIT960) media as previously described.¹⁷ The WHO-recommended critical concentration of 1 µg/mL bedaquiline fumarate (Janssen Pharmaceuticals via the National Institute of Allergy and Infectious Diseases/National Institutes of Health AIDS Reagent Program; Bethesda, USA) was used. *Mycobacterium tuberculosis* H37Rv was used as a susceptible control and BCCM/ITM 121749 (Institute of Tropical Medicine; Antwerp, Belgium) as a resistant control.¹⁸

Sequencing was done on crude or purified isolate DNA.¹⁹ Genomic libraries for whole-genome sequencing were prepared using the DNA Prep kit (Illumina; San Diego, USA) or NEBNext Ultra II kit (NEB; Ipswich, USA), and sequenced using NextSeq500 (Illumina; San Diego, USA) with V2, paired-end chemistry. Reads are deposited in the European Nucleotide Archive (PRJEB47429) and were analysed as described to detect non-synonymous variants or indels in *Rv0678*, *atpE*, *pepQ*, *Rv0676c*, *Rv0677c*, and *Rv1979c*.²⁰ TB profiler (version 3.0.4) was used for drug susceptibility testing (allele frequency of 10% for resistance calls). De novo assembly to detect *Rv0678* structural variants for one isolate with discrepant whole-genome sequencing and targeted deep sequencing results was done using UGAP and svTyper.

Targeted deep sequencing for *Rv0678*, *atpE*, and *pepQ* were each analysed using multiple tiled amplicons as previously described⁶ (appendix 1 p 8), but were not done for other loci as primers were unavailable. Samples were pooled and sequenced using an Illumina MiSeq (Illumina; San Diego, California, USA) with V3 paired-end chemistry with a targeted coverage of 30 000 reads per amplicon. Reads are in NCBI Bioproject (PRJNA767896) and were analysed by [Amplicon Sequencing Analysis Pipeline](#). Minority variants were counted if variants occurred at 1% or more with five or more paired reads. Mitigations steps, such as positive reference controls, were included to reduce false-positive results. For haplotype analysis, four *Rv0678* amplicons were individually analysed. Haplotype analysis was not

done on isolates that had a single variant or genes from phenotypic resistant patients without variants reported.

Statistical analysis

We did the statistical analyses using Stata (version 15) and GraphPad Prism (version 8.0.1) using two-sided tests ($\alpha=0.05$). McNemar's test was used to calculate differences in paired data. We estimated the number of people from which our cohort was derived using data from a contemporaneous clinical study with similar eligibility criteria that shared a facility. For drugs other than bedaquiline, whole-genome sequencing of drug susceptibility testing was used to classify a drug as likely effective. Methods for clustering, phylogeny, and reinfection analyses are summarised in appendix 1 (pp 2–3). Information about the whole-genome sequencing and targeted deep sequencing bioinformatics analysis are summarised in appendix 1 (pp 2–3).

Role of the funding source

The funders of the study had no role in study design, data collection, data analysis, data interpretation, or writing of the report.

Results

In total, 40 (31%) of 129 patients from an estimated pool were eligible for this study (figure 1). Of these 40 patients, 26 (65%) were inpatients and 14 (35%) were outpatients at surrounding facilities. 28 (70%) of 40 patients were initiated on bedaquiline¹⁵ when substituted for a second-line injectable because of toxicity or intolerance, or within an individualised regimen where resistance to fluoroquinolones or second-line injectables was noted. 12 (30%) of 40 patients were treated with bedaquiline-containing salvage regimens in the setting of extensive drug resistance (eight [67%] of 12 had resistance to both fluoroquinolones and second-line injectables, and four [33%] had a history of second-line treatment failure).²¹

Demographics and clinical characteristics, including treatment histories and outcomes are summarised in the table. Overall, 18 (46%) of 39 patients (one result unavailable) had baseline whole-genome sequencing-detected fluoroquinolone resistance, and this finding was more frequent in patients with bedaquiline resistance (at baseline or follow-up) than in those who were bedaquiline susceptible (14 [67%] of 21 vs four [22%] of 18; $p=0.01$). 29 (73%) of 40 patients had a history of clofazimine exposure and 20 (50%) had concurrent clofazimine and bedaquiline treatment. At follow-up, patients received a median of seven drugs (IQR 6–9). When antibiograms of baseline versus follow-up isolates were compared, the frequency of fluoroquinolone resistance (18 [46%] of 39 patients vs 28 [76%] of 37; $p=0.01$) and clofazimine resistance (three [8%] of 39 vs 21 [57%] of 37; $p<0.0001$) increased (appendix 1 p 11). In patients who had bedaquiline resistance at follow-up, the number of likely effective drugs were fewer than in patients with bedaquiline-susceptible tuberculosis (three [IQR 3–4] vs five [4–6]; $p<0.0001$). The odds ratio (OR) for bedaquiline resistance at follow-up for baseline fluoroquinolone resistance was 7 (95% CI 2–29; $p<0.0001$), clofazimine exposure was 5 (1–23; $p=0.03$), and four or less likely effective

drugs was 12 (2–61; $p < 0.0001$). When patients with baseline bedaquiline resistance and reinfection were omitted, the four or less likely effective drugs was the only variable with a significant OR (appendix 1 p 12). Levofloxacin, pyrazinamide, and clofazimine were each more likely to be ineffective in bedaquiline-resistant patients than in bedaquiline-susceptible patients (table; appendix 1 pp 9–10). Patients who had phenotypically bedaquiline-resistant isolates at follow-up had, at specimen collection, received bedaquiline for a similar period as susceptible patients. 25 (63%) of 40 patients had an unfavourable outcome, and all but one (patient 37-B08) with a bedaquiline resistance-associated variant had an unfavourable outcome.

Of baseline isolates assessable by phenotypic drug susceptibility testing for bedaquiline (1 $\mu\text{g/mL}$), 35 (92%) of 38 were susceptible and three (8%) were resistant. Of the follow-up isolates, 18 (45%) of 40 patients were susceptible and 22 (55%) were resistant. Overall, three (8%) of 38 patients had primary resistance (appendix 1 pp 13–14), 18 (47%) gained resistance (acquired or reinfection; appendix 1 pp 15–20), and 17 (45%) were susceptible at both baseline and follow-up (figure 1B, 2; appendix 1 pp 21–24).

Whole-genome sequencing data were available for 39 (98%) of 40 patients with baseline isolates and 38 (95%) with follow-up isolates. In patients whose isolates gained resistance, no baseline isolates had *Rv0678*, *atpE*, *pepQ*, or *Rv0677c* variants (excluding *Rv0678-11 C/A*), although five (29%) of 17 had one or more *Rv1979c* variant (appendix 1 pp 15–20). All isolates (resistant or susceptible) had one or more *Rv0676c* variant. At follow-up, the percentage of patients whose isolates gained variants associated with resistance increased to 88% (15 of 17 patients; $p < 0.0001$ vs baseline) for *Rv0678* and 24% (four patients; $p = 0.70$ vs baseline) for *Rv1979c*; no *atpE*, *pepQ*, or *Rv0677c* variants were noted at follow-up. Notably, two (12%) of 17 patients' isolates gained bedaquiline resistance (03-A03, 09-A09) but had no apparent variants when a genome-wide screen was done. However, after visual inspection an *IS6110* insertion site was identified in patient 03-A03. By contrast, among patients whose isolates remained susceptible, new variants were noted only in *pepQ* (two [13%] of 16; $p = 0.13$) and *Rv1979c* (five [31%] of 16; $p = 0.69$; appendix 1 pp 21–24). When gain-or-loss variants were compared between timepoints for background drugs (excluding bedaquiline), 30 (79%) of 38 drug-resistance conferring mutations were fixed. However, for eight (21%) of 38 patients, heteroresistance was seen and this finding is detailed in appendix 1 (pp 5–6).

Targeted deep sequencing detected additional variants relative to whole-genome sequencing; 13 (33%) of 40 patient isolates with a whole-genome sequencing-detected variant had additional variants exclusively detected by targeted deep sequencing. In all patients, *Rv0678* and *pepQ* variants were detected in two (5%) of 40 baseline isolates and 20 (50%) of 40 follow-up isolates, but none were detected in combination (no *atpE* variants were detected; –11C/A *Rv0678* was excluded). However, no variants exclusively detected by targeted deep sequencing explained phenotypic bedaquiline resistance not otherwise explained by whole-genome sequencing-detected variants. Additionally, targeted deep sequencing identified the same majority bedaquiline-resistant associated variants as whole-genome sequencing. In those who gained phenotypic resistance, 16 (89%) of 18 patients gained one or more *Rv0678* variants (–11C/A *Rv0678* variants excluded; appendix 1 pp 15–20).

The IS6110 insertion in the patient 03-A03 follow-up isolate was undetected by targeted deep sequencing. Haplotype analyses on phenotypically resistant isolates with targeted deep sequencing-detected variants from 17 patients showed, for *Rv0678*, that if more than one variant was detected 14 (82%) of 17 were on different amplicons. Three (18%) of 17 patients were on different amplicons and the same amplicon some of the time (appendix 2).

29 (81%) of 36 patients with whole-genome sequencing data available at baseline and follow-up had seven or less variants difference between isolates (median 3.0 [IQR 2.5–3.7]), indicative of possible within-patient evolution (the number of variants difference was not associated with days-between-isolates; appendix 1 p 7). Of these 29 patients, 15 (52%) transitioned phenotypically from bedaquiline susceptible to resistant, indicating possible resistance acquisition. The other seven (19%) of 36 patients had between 39 and 1271 variants difference, suggestive of reinfection possibly from transmission. Two (29%) of seven of these patients were initially bedaquiline susceptible and hence possibly gained resistance via reinfection. Of the seven patients with possible reinfection, five (71%) who remained L2.2.1 (39 and 240 variants different, respectively) had a different sub-lineage at follow-up compared with baseline (figure 3). Patient 04-A04 had at baseline a mixed infection of two strains, both of which, based on inspection of *pncA* sequences, were not present at follow-up; rather, a third new strain was present.

At the 12 or less single-nucleotide polymorphism cutoff, five clusters totalling 14 patients with L2 or L4 strains were identified (figures 3, 4). 26 (65%) of 40 patients did not cluster with one another (the 5 single-nucleotide polymorphism threshold identified no clusters). All clusters except cluster 1 had at least one patient who gained phenotypic bedaquiline resistance and, in both clusters 2 and 5, one patient who gained resistance had a new follow-up strain (reinfection).

Discussion

We evaluated phenotypic and genotypic bedaquiline resistance among programmatically treated patients with drug-resistant tuberculosis who were culture positive after 4 months of a bedaquiline-containing regimen. Key findings include the following: more than half of the patients had isolates that gained bedaquiline resistance (most due to acquisition; however, reinfection might have also occurred); diverse *Rv0678* and *pepQ* single nucleotide variants and indels were frequently seen with phenotypic resistance, whereas isolates with *Rv0676c*, *Rv0677c*, and *Rv1979c* variants were seen with both susceptible and resistant isolates (suggestive of lineage markers); no *atpE* variants were found; and many minor variants were only detected by targeted deep sequencing, however, all isolates with exclusively targeted deep sequencing-detected variants already had other whole-genome sequencing-detected variants that were seen with phenotypic bedaquiline resistance; and bedaquiline-resistance gain at follow-up was associated with fewer likely effective drugs, clofazimine exposure, and baseline fluoroquinolone resistance. Together, these data identify a potential programmatic source of bedaquiline resistance, show how reinfection can be responsible for resistance, and highlight the complexity of associating specific variants with phenotypic bedaquiline resistance. Furthermore, these data can contribute to the WHO drug-resistant

tuberculosis mutation catalogue and provide information about which patients are most at risk of gaining resistance.

This study is one of the first to report individual-level bedaquiline-resistance gain over time among patients treated in a programmatic setting with a bedaquiline-containing regimen. This rate was higher than described elsewhere,^{22,23} as our patient population was deliberately preselected based on elevated resistance acquisition risk, and selected for possible failure of treatment. However, these individuals reflect the type of patient originally prioritised for bedaquiline access in our setting and, should bedaquiline-resistance transmission become endemic, is one possible initial source (importantly, three patients were already resistant at bedaquiline treatment initiation). Resistance gain was primarily due to acquisition; however, in some patients it was due to reinfection.

We identified many variants in *Rv0678* and *pepQ* alongside phenotypic bedaquiline resistance (eg, *Rv0678*: 343 C/T, 136 G ins, and 292 A del; *pepQ*: 693 A ins) hitherto undescribed.^{12,22} *Rv0676c* variants (2299 C/T, 2381 G/A, and 2842 T/C) were found in both resistant and susceptible isolates at both timepoints. In the 2021 WHO drug-resistant tuberculosis mutation catalogue, these variants are indeed classified as not associated with bedaquiline resistance¹³ and are suggestive of lineage markers. Interestingly, -11C/A variants have been associated with increased bedaquiline susceptibility;²⁴ however, eight of these isolates also had additional *Rv0678* variants, suggesting any hyper-susceptibility is possibly overcome.

These diverse variants represent complexity for molecular diagnostic developers that is compounded by the insertion of large elements such as *IS6110* in *Rv0678* that might be missed by targeted deep sequencing and whole-genome sequencing.²⁵ This complexity is somewhat offset by the relatively low frequency of *pepQ* variants in the absence of *Rv0678* variants (only one of these strains with only a *pepQ* variant was bedaquiline resistant) and a complete absence of *atpE* variants.

Targeted deep sequencing detected many minor variants missed by whole-genome sequencing; however, the overall genotypic classification of resistance did not change because all variants exclusively detected by targeted deep sequencing were in loci that had whole-genome sequencing-detected variants. This finding might be because this patient population has a very low number of effective drugs and thus many variants can emerge—some of these variants to a high level (ie, non-minority heteroresistance)—at which point they are detectable to whole-genome sequencing. This finding should not rule out the use of targeted deep sequencing, as variants exclusively detected by targeted deep sequencing might affect minimum inhibitory concentrations, acquired resistance, and treatment failure. Furthermore, with bigger sample size, exclusively detected targeted deep sequencing variants might have occurred in phenotypically resistant isolates. Targeted deep sequencing is also useful (and often easier to do prospectively) for second-line genotypic drug susceptibility testing.²⁶

Several characteristics differed at baseline in patients who later gained bedaquiline resistance versus those who did not. In addition to previously described prior or concurrent

clofazimine exposure,²⁷ a weaker background regimen (especially fluoroquinolones being possibly ineffective) puts patients at risk of resistance acquisition. This finding suggests protecting the fluoroquinolone (eg, via rapid drug susceptibility testing or enhanced dosing) is crucial for preventing bedaquiline-resistance acquisition, as well as ensuring that the number of likely effective drugs always exceeds four. Lastly, almost all patients with bedaquiline resistance had a poor clinical outcome, indicating the need for new treatment strategies in patients with bedaquiline-resistant tuberculosis.

Our study has strengths and limitations. First, we aimed to understand bedaquiline-resistance emergence in a programmatic setting where we expected it to be most likely. This finding is intentionally not representative of most patients who receive bedaquiline for drug-resistant tuberculosis, for which excellent outcomes have been observed.¹¹ Our study took place before all oral regimens were recommended for patients with multidrug-resistant or rifampicin-resistant tuberculosis but was in a facility where novel drugs such as bedaquiline are first used before population-level scale-up. The baseline frequency of fluoroquinolone resistance is, although reflective of that in the types of patients prioritised for initial bedaquiline access in our setting, not representative of that in patients who have uncomplicated rifampicin-resistant tuberculosis who are now, per the latest guidelines, eligible for bedaquiline-based regimens (about 13% in South Africa, about 20% globally).²⁸ Nevertheless, our study highlights the importance of fluoroquinolone drug-susceptible testing and suggests that protecting fluoroquinolone susceptibility is possibly essential to prevent emergence of bedaquiline resistance. Our aim was not to quantify population-level bedaquiline resistance, which is important. Large national or subnational molecular epidemiology studies have quantified population-level bedaquiline resistance,^{14,29} and one study found an overall baseline bedaquiline resistance rate of 5.0% (19 of 383) in people with drug-resistant tuberculosis in South Africa, with 3.5% (five of 142) of people gaining resistance in the longitudinal cohort.³⁰ This difference in the magnitude of resistance gain versus our study is possibly attributable to patient profiles (all patients starting bedaquiline in these other studies *vs* patients with complex treatment histories and sustained culture positivity in our study). We did not quantify bedaquiline minimal inhibitory concentrations, as our objective was to characterise the proportion of people whose minimal inhibitory concentrations exceeded the critical concentration for bedaquiline; however, our isolates will contribute to future efforts to accomplish this important goal. On a technical level, a mix of crude or purified isolate DNA was used for sequencing, which might explain some discordance (eg, targeted deep sequencing missing a few whole-genome sequencing-detected variants). For targeted deep sequencing, even though positive amplification and sequencing reference controls were included, we recognise that erroneous single-nucleotide polymorphisms could be identified by chance. Our clustering analysis was a convenient secondary analysis done to rule in not rule out transmission; we therefore possibly underestimated transmission events.

In conclusion, this study highlights the existence of bedaquiline-resistant strains, for which we show transmission occurring, created under programmatic conditions in a population of patients prioritised at the beginning of bedaquiline roll-out in South Africa. These findings are most generalisable to settings where new drugs such as bedaquiline were given, even if only initially, to patients such as those in this study, where there was a high level of

pre-existing drug resistance and few effective treatment options. The study illustrates high rates of resistance in people with a delayed bacteriological response, the risks of starting patients with complex tuberculosis treatment histories on a regimen containing a novel drug without routinely available drug susceptibility testing (which requires balancing with ethical considerations), provides information about novel bedaquiline resistance-associated and susceptibility-associated variants, and informs upon clinical risk factors associated with resistance gain.

Supplementary Material

Refer to Web version on PubMed Central for supplementary material.

Acknowledgments

This work was funded by Doris Duke Charitable Foundation (JM), US National Institute of Allergy and Infectious Diseases (R01AI131939; JM and DE), South African Medical Research Council, National Research Foundation, Research Foundation Flanders (G0F8316N; AVR and AD), Stellenbosch University Faculty of Medicine Health Sciences, South African National Research Foundation and Swiss National Science Foundation (107799; HC and SG), and the Wellcome Trust (099818/Z/12/Z; HC). We thank the National Health Laboratory Services, Green Point, Cape Town, South Africa. We also thank members of the TGen team, including Andrew Goedderz, Jason Agundez, and Meagan Papineau for doing targeted sequencing and data analysis support. Lastly, we thank the patients, their families, and the health-care staff who cared for them.

Data sharing

All data are available in the appendices. WGS reads are deposited in the European Nucleotide Archive (PRJEB47429) and TDS reads are in NCBI Bioproject (PRJNA767896).

References

1. Laurence YV, Griffiths UK, Vassall A. Costs to health services and the patient of treating tuberculosis: a systematic literature review. *Pharmacoeconomics* 2015; 33: 939–55. [PubMed: 25939501]
2. Conradie F, Meintjes G, Hughes J, et al. Clinical access to bedaquiline programme for the treatment of drug-resistant tuberculosis. *Afr Med J* 2014; 104: 164–65.
3. WHO. WHO consolidated guidelines on drug-resistant tuberculosis treatment 2019. Geneva: World Health Organization, 2020.
4. Klopper M, Heupink TH, Hill-Cawthorne G, et al. A landscape of genomic alterations at the root of a near-untreatable tuberculosis epidemic. *BCM Med* 2020; 18: 1–14.
5. van Dorp L, Nimmo C, Ortiz AT, et al. Detection of a bedaquiline/clofazimine resistance reservoir in *Mycobacterium tuberculosis* predating the antibiotic era. *bioRxiv* 2023; published online Jan 13. 10.1101/2020.10.06.328799 (preprint).
6. De Vos M, Ley SD, Wiggins KB, et al. Bedaquiline microheteroresistance after cessation of tuberculosis treatment. *N Engl J Med* 2019; 380: 2178–80. [PubMed: 31141643]
7. Ghodousi A, Rizvi AH, Baloch AQ, et al. Acquisition of cross-resistance to bedaquiline and clofazimine following treatment for tuberculosis in Pakistan. *Antimicrob Agents Chemother* 2019;63: e00915–19. [PubMed: 31262765]
8. Pang Y, Zong Z, Huo F, et al. In vitro drug susceptibility of bedaquiline, delamanid, linezolid, clofazimine, moxifloxacin, and gatifloxacin against extensively drug-resistant tuberculosis in Beijing, China. *Antimicrob Agents Chemother* 2017; 61: e00900–17. [PubMed: 28739779]
9. Omar SV, Ismail F, Ndjeka N, Kaniga K, Ismail NA. Bedaquiline-resistant tuberculosis associated with *Rv0678* mutations. *N Engl J Med* 2022; 386: 93–94. [PubMed: 34986292]

10. Conradie F, Diacon AH, Ngubane N, et al. Treatment of highly drug-resistant pulmonary tuberculosis. *N Engl J Med* 2020; 382: 893–902. [PubMed: 32130813]
11. Nimmo C, Millard J, Van Dorp L, et al. Population-level emergence of bedaquiline and clofazimine resistance-associated variants among patients with drug-resistant tuberculosis in southern Africa: a phenotypic and phylogenetic analysis. *Lancet Microbe* 2020; 1: e165–74. [PubMed: 32803174]
12. Kadura S, King N, Nakhoul M, et al. Systematic review of mutations associated with resistance to the new and repurposed *Mycobacterium tuberculosis* drugs bedaquiline, clofazimine, linezolid, delamanid and pretomanid. *J Antimicrob Chemother* 2020; 75: 2031–43. [PubMed: 32361756]
13. WHO. Catalogue of mutations in *Mycobacterium tuberculosis* complex and their association with drug resistance. Geneva: World Health Organization, 2021.
14. Olayanju O, Limberis J, Esmail A, et al. Long-term bedaquiline-related treatment outcomes in patients with extensively drug resistant tuberculosis from South Africa. *Eur Respir J* 2018; 51: 1800544. [PubMed: 29700106]
15. Mudaly V, Voget J. Clinical guidelines & standard operating procedure for the implementation of the short & long DR-TB regimens for adults, adolescents and children. 2018. https://www.westerncape.gov.za/assets/departments/health/tuberculosis_-_dr-tb_clinical_guidelines_2018.pdf (accessed Dec 23, 2022).
16. WHO. Definitions and reporting framework for tuberculosis—2013 revision: updated December 2014 and January 2020. Geneva: World Health Organization, 2013.
17. Torrea G, Coeck N, Desmaretz C, et al. Bedaquiline susceptibility testing of *Mycobacterium tuberculosis* in an automated liquid culture system. *J Antimicrob Chemother* 2015; 70: 2300–05. [PubMed: 25977401]
18. Andries K, Verhasselt P, Guillemont J, et al. A diarylquinoline drug active on the ATP synthase of *Mycobacterium tuberculosis*. *Science* 2005; 307: 223–27. [PubMed: 15591164]
19. Warren R, de Kock M, Engelke E, et al. Safe *Mycobacterium tuberculosis* DNA extraction method that does not compromise integrity. *J Clin Microbiol* 2006; 44: 254–56. [PubMed: 16390984]
20. Dippenaar A, De Vos M, Marx FM, et al. Whole genome sequencing provides additional insights into recurrent tuberculosis classified as endogenous reactivation by IS6110 DNA fingerprinting. *Infect Genet Evol* 2019; 75: 103948. [PubMed: 31276801]
21. Cox H, Hughes J, Daniels J, et al. Community-based treatment of drug-resistant tuberculosis in Khayelitsha, South Africa. *Int J Tuberc Lung Dis* 2014; 18: 441–48. [PubMed: 24670700]
22. Ismail N, Rivière E, Limberis J, et al. Genetic variants and their association with phenotypic resistance to bedaquiline in *Mycobacterium tuberculosis*: a systematic review and individual isolate data analysis. *Lancet Microbe* 2021; 2: e604–16. [PubMed: 34796339]
23. Chesov E, Chesov D, Maurer FP, et al. Emergence of bedaquiline resistance in a high tuberculosis burden country. *Eur Respir J* 2022; 59: 2100621. [PubMed: 34503982]
24. Villellas C, Coeck N, Meehan CJ, et al. Unexpected high prevalence of resistance-associated *Rv0678* variants in MDR-TB patients without documented prior use of clofazimine or bedaquiline. *J Antimicrob Chemother* 2016; 72: 684–90.
25. Antoine R, Gaudin C, Hartkoorn RC. Intragenic distribution of IS6110 in clinical *Mycobacterium tuberculosis* strains: bioinformatic evidence for gene disruption leading to underdiagnosed antibiotic resistance. *Microbiol Spectr* 2021; 9: e0001921. [PubMed: 34287057]
26. Engelthaler DM, Streicher EM, Kelley EJ, et al. Minority *Mycobacterium tuberculosis* genotypic populations as an indicator of subsequent phenotypic resistance. *Am J Respir Cell Mol Biol* 2019; 61: 789–91. [PubMed: 31774334]
27. Nguyen TVA, Anthony RM, Bañuls A-L, Nguyen TVA, Vu DH, Alffenaar J-WC. Bedaquiline resistance: its emergence, mechanism, and prevention. *Clin Infect Dis* 2018; 66: 1625–30. [PubMed: 29126225]
28. Mirzayev F, Viney K, Linh NN, et al. World Health Organization recommendations on the treatment of drug-resistant tuberculosis, 2020 update. *Eur Respir J* 2021; 57: 2003300. [PubMed: 33243847]
29. Ismail NA, Omar SV, Joseph L, et al. Defining bedaquiline susceptibility, resistance, cross-resistance and associated genetic determinants: a retrospective cohort study. *EBioMedicine* 2018; 28: 136–42. [PubMed: 29337135]

30. Pai H, Ndjeka N, Mbuagbaw L, et al. Bedaquiline safety, efficacy, utilization and emergence of resistance following treatment of multidrug-resistant tuberculosis patients in South Africa: a retrospective cohort analysis. *BMC Infect Dis* 2022; 22: 1–15. [PubMed: 34983406]

Author Manuscript

Author Manuscript

Author Manuscript

Author Manuscript

Research in context

Evidence before this study

Bedaquiline is a landmark drug. Programmatic implementation of this drug is being rapidly scaled up to treat many forms of drug-resistant tuberculosis, a life-threatening disease that affects hundreds of thousands of people globally. South Africa was one of the first countries to make bedaquiline available and prioritise the drug for people with few other treatment options; however, the use of bedaquiline was done in the absence of an ability to regularly test for resistance. We searched PubMed and Google Scholar using the search terms “bedaquiline”, “resistance”, and “tuberculosis” for primary research and reviews from database inception to Sept 5, 2022. We found publications describing bedaquiline resistance primarily in clinical trials rather than in programmatic contexts. The few publications describing programmatic data were mostly cross-sectional molecular epidemiology studies, none repeatedly sampled individuals at risk of bedaquiline resistance over time, and no descriptions of bedaquiline resistance transmission were found. We also noted a paucity of information regarding variants and risk factors associated with resistance.

Added value of this study

We uniquely analysed more than one culture isolate per patient over time and presented data from patients who had weak background regimens stemming from pre-existing advanced drug-resistant tuberculosis and were prioritised for bedaquiline access. We showed that more than half of these patients gained bedaquiline resistance and noted two individuals who gained a new bedaquiline resistant strain (probable primary resistance transmission). We reported diverse and previously undocumented *Rv0678* and *pepQ* variants that are associated with resistance; that resistance acquisition itself is associated with baseline fluoroquinolone resistance, previous or current clofazimine exposure, and fewer drugs likely to be effective; and that bedaquiline resistance significantly increases the likelihood of a poor clinical outcome.

Implications of all the available evidence

The rapidly growing body of evidence, including this work, highlights the existence of an infectious pool of bedaquiline resistant strains that might prove to be a source of population-level resistance transmission. This finding demonstrates the challenges and risks associated with starting patients with complex treatment histories on a novel drug, for which there are several in the pipeline, without routinely available drug susceptibility testing and strong background regimens. Clinical risk factors for incident resistance and descriptions of resistance-associated variants are increasingly well known. This collective work could be used to develop guidelines to assist clinicians, simultaneously inform the development of rapid genotypic assays and their prioritisation in key at-risk populations, and advise future novel tuberculosis drug roll-out strategies.

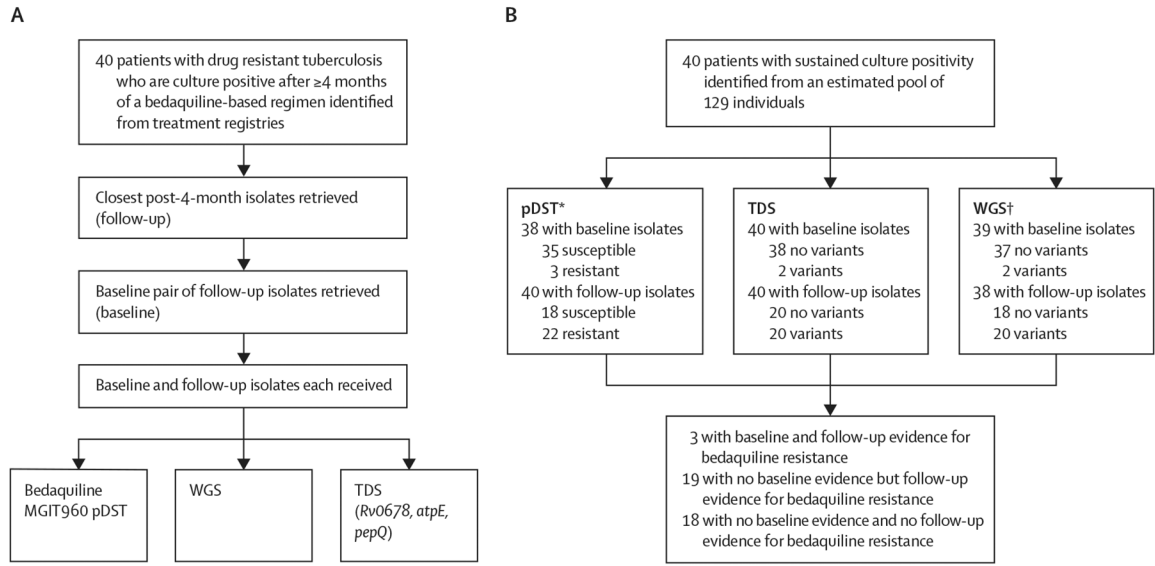


Figure 1: Study profile and bedaquiline DST results at baseline and follow-up

(A) Patients with pulmonary drug-resistant tuberculosis and who were culture positive after 4 months or more of a bedaquiline-based regimen had their baseline (close to bedaquiline treatment initiation) and follow-up isolate (4 months) retrieved and used for phenotypic and genotypic (TDS and WGS) DST. (B) This approach identified a large proportion of patients whose *Mycobacterium tuberculosis* isolates gained resistance. DST=drug susceptibility testing. MGIT=mycobacterial growth indicator tube. pDST=phenotypic drug susceptibility testing. TDS=targeted deep sequencing. WGS=whole-genome sequencing. *Missing data for pDST results due to non-culturable isolates. †WGS results unavailable.

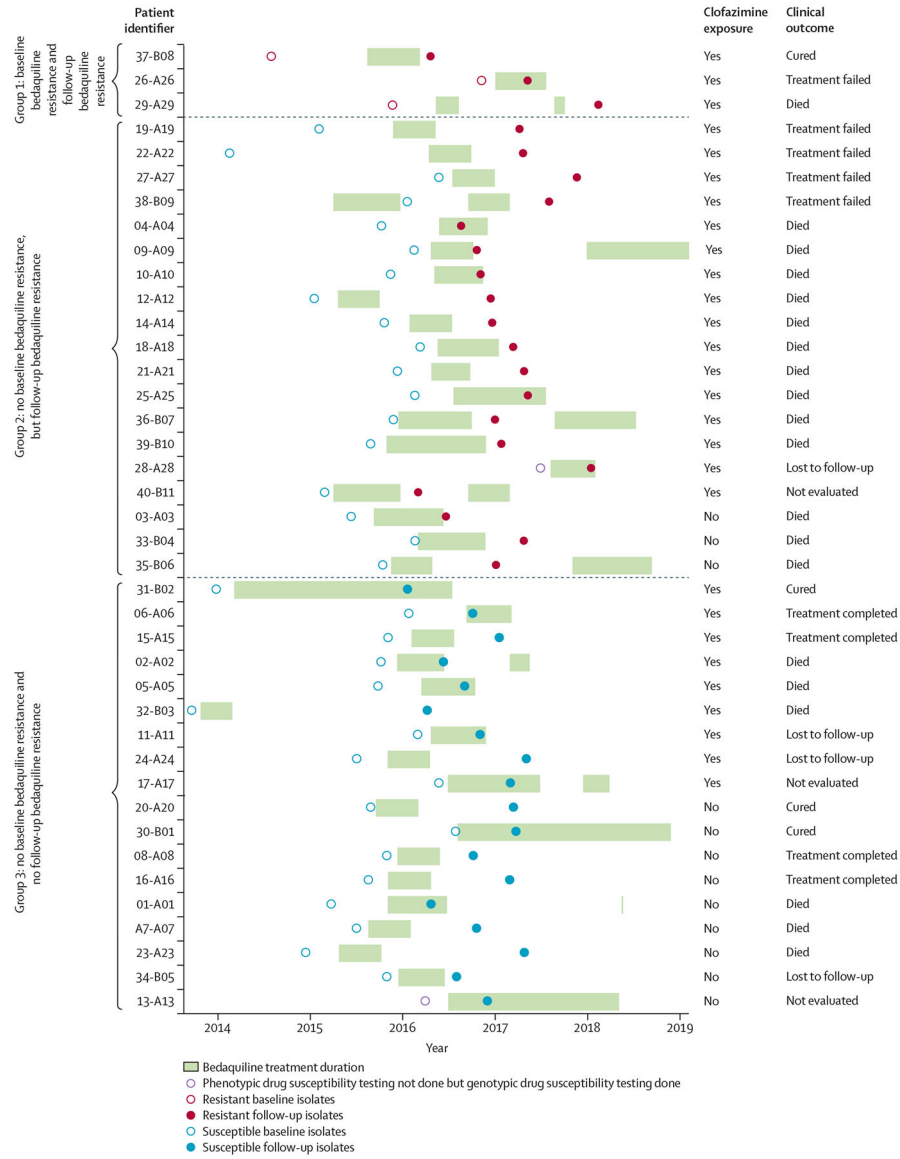


Figure 2: Timeline of bedaquiline treatment and follow-up isolate sampling per patient
 Each circle represents individual bedaquiline phenotypic drug susceptibility testing done. Three (8%) of 40 patients were phenotypically resistant at baseline and follow-up (classified as group 1), and all had clofazimine exposure (prior or concurrent with bedaquiline). 19 (48%) of 40 patients acquired bedaquiline resistance during treatment (group 2); all but three (16%) of 19 had clofazimine exposure and all with a known treatment outcome had an unfavourable outcome. 18 (45%) of 40 patients were susceptible at both timepoints (group 3).

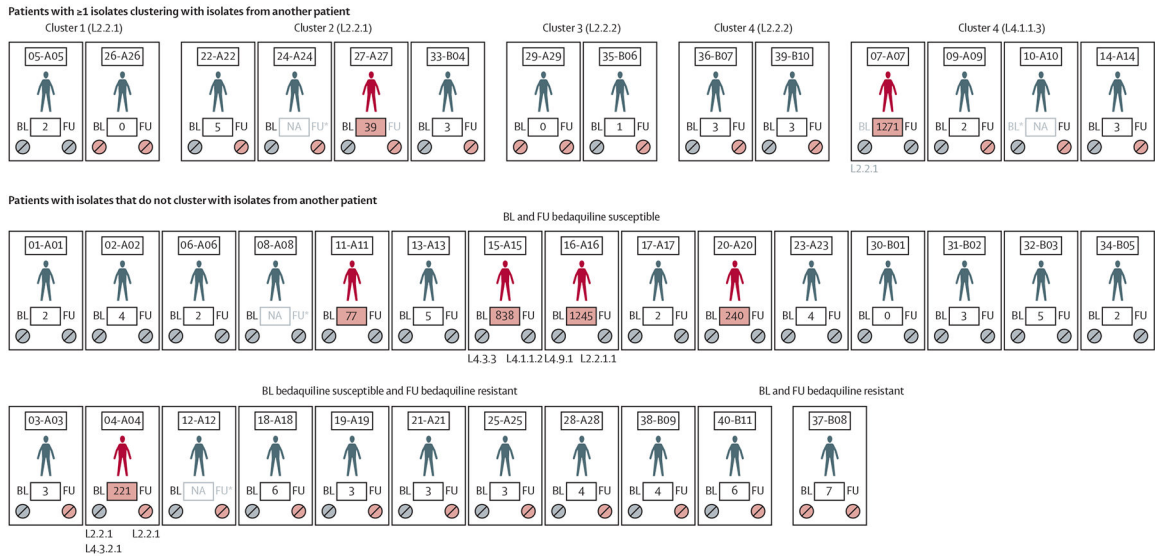


Figure 3: Whole-genome sequencing of BL and FU isolates identified five clusters (12 single-nucleotide polymorphisms) and evidence of reinfection, overlaid with phenotypic bedaquiline resistance statuses
 Pill colours indicate phenotypic bedaquiline susceptibility (grey) or phenotypic bedaquiline resistance (red). Greyed BL or FU labels with an asterisk indicate missing whole-genome sequencing data and those without an asterisk indicate the corresponding isolate does not cluster with its pair. Patient identifiers are shown above for each patient with variant distances between BL and FU in boxes (if distances are 39, reinfection is indicated by a red patient figure and red box background). Patients without isolates that cluster with other patients are grouped per baseline and follow-up phenotypic bedaquiline statuses (bottom two rows). Lineages are shown when pairs differed. BL=baseline. FU=follow-up. L=lineage. NA=not available.

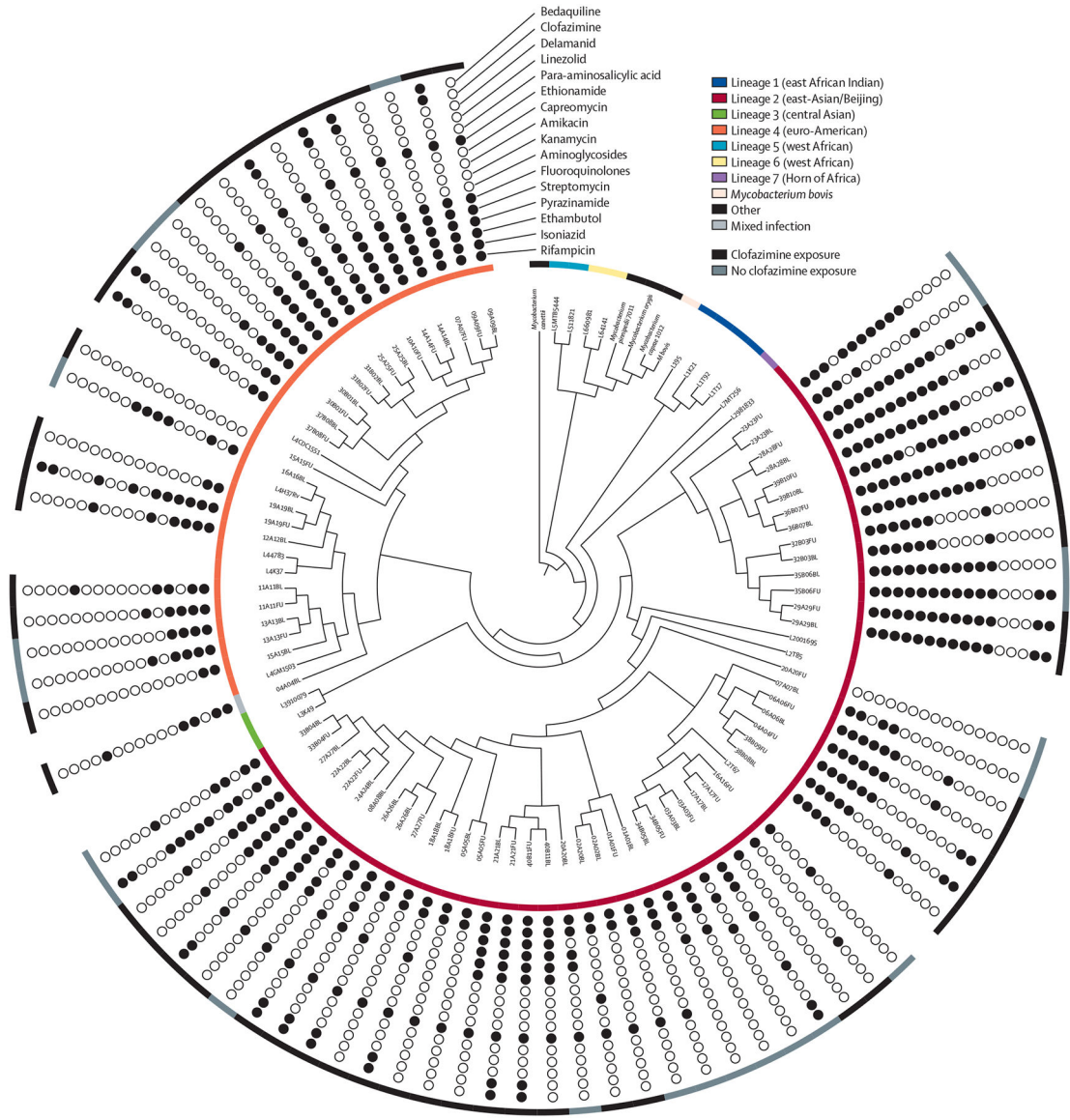


Figure 4: Cladogram showing isolate’s lineage diversity, likely reinfection, drug susceptibility, and clofazimine exposure

The inner ring shows the cladogram. The outer ring shows clofazimine exposure. The circles show drug susceptibility based on whole-genome sequencing excluding phenotypic drug susceptibility testing for bedaquiline. 51 (67%) of 76 isolates were in L2 (red) and 24 (32%) were in L4 (orange; one mixed with both lineages present at baseline), and isolates were resistant to many drugs. Branch lengths were ignored for visualisation and the phylogenetic analysis included 25 sequences representative of the *Mycobacterium tuberculosis* complex (appendix 2). BL=baseline. FU=follow-up. L=lineage.

Author Manuscript

Author Manuscript

Author Manuscript

Author Manuscript

Table:

Patient characteristics according to phenotypic bedaquiline resistance profile at follow-up

	Overall (n=40)	Bedaquiline phenotype at follow-up		p value
		Susceptible (n=18)	Resistant (n=22)	
Demographics				
Age at diagnosis of current episode (years)	36 (27–45)	34 (27–43)	36 (27–45)	0.75
Sex				
Female	11 (28%)	5 (28%)	6 (27%)	0.97
Male	29 (73%)	13 (72%)	16 (73%)	0.96
Clinical characteristics				
HIV positive	21 (53%)	7 (39%)	14 (64%)	0.12
CD4 count ($\times 10^9$ cells per L) [*]	168 (61–394)	235 (28–631)	157 (66–314)	0.70
Antiretroviral therapy	18/21 (86%)	5/7 (71%)	13/14 (93%)	0.49
Treatment history				
Previous tuberculosis	32 (80%)	13 (72%)	19 (86%)	0.27
Previous drug-resistant tuberculosis	20/32 (63%)	8/13 (62%)	12/19 (63%)	0.93
Days between baseline and follow-up isolate	429 (291–564)	369 (252–592)	439 (365–578)	0.44
Any clofazimine exposure (prior or concurrent)	29 (73%)	10 (56%)	19 (86%)	0.03
Prior clofazimine [†]	7/26 (27%)	2/8 (25%)	5/18 (28%)	0.88
Concurrent with bedaquiline [†]	20/26 (77%)	6/8 (75%)	14/18 (78%)	0.88
Treatment and drug resistance				
Bedaquiline treatment duration (days)	185 (168–265)	181 (168–267)	193 (168–266)	0.80
Baseline fluoroquinolone resistance [‡]	18/39 (46%)	4 (22%)	14/21 (67%)	0.01
Overall drug resistance patient categorisation				
Pre-multidrug-resistant or rifampicin mono-resistant tuberculosis	2/36 (6%)	2/16 (13%)	0	0.10
Multidrug resistant	8/36 (22%)	6/16 (38%)	2/20 (10%)	0.05
Multidrug resistant plus resistance to a fluoroquinolone	20/36 (56%)	7/16 (44%)	13/20 (65%)	0.20
Multidrug resistant plus resistance to a fluoroquinolone and second-line injectable	6/36 (17%)	1/16 (6%)	5/20 (25%)	0.43
Treatment regimen				
Total number of drugs (excluding bedaquiline) [§]	7 (6–9)	7 (6–12)	8 (6–9)	0.85
Likely effective [¶]	4 (3–5)	5 (4–6)	3 (3–4)	<0.0001
Treatment outcomes				
Favourable outcome	8 (20%)	7 (39%)	1 (5%)	<0.0001
Cured	4 (10%)	3 (17%)	1 (5%)	0.20
Treatment completed	4 (10%)	4 (22%)	0	0.02
Unfavourable outcome	25 (63%)	6 (33%)	19 (86%)	<0.0001
Treatment failed	5 (13%)	0	5 (23%)	0.03
Died	20 (50%)	6 (33%)	14 (64%)	0.06
Lost to follow-up	4 (10%)	3 (17%)	1 (5%)	0.20
Not evaluable	3 (8%)	2 (11%)	1 (5%)	0.43

Data are n (%), n/N (%), or median (IQR), unless otherwise specified. Those with resistance were more likely to have baseline fluoroquinolone resistance, clofazimine exposure, fewer likely effective drugs, and an adverse treatment outcome versus susceptible patients at follow-up.

* One (3%) of 40 patients had unknown CD4 count.

† Three (8%) of 40 patients had a record of clofazimine treatment (two bedaquiline-susceptible patients and one bedaquiline-resistant patient) but no date.

‡ Detected by whole-genome sequencing or programmatic line probe assay. One result unavailable.

§ Two (5%) of 40 patients were excluded due to unknown background tuberculosis drug regimens.

¶ Two whole-genome sequencing results unavailable.

Author Manuscript

Author Manuscript

Author Manuscript

Author Manuscript