

UC Irvine

UC Irvine Previously Published Works

Title

Current Biomechanical Concepts for Rotator Cuff Repair

Permalink

<https://escholarship.org/uc/item/63c618f0>

Journal

Clinics in Orthopedic Surgery, 5(2)

ISSN

2005-291X

Author

Lee, Thay Q

Publication Date

2013

DOI

10.4055/cios.2013.5.2.89

Copyright Information

This work is made available under the terms of a Creative Commons Attribution License, available at <https://creativecommons.org/licenses/by/4.0/>

Peer reviewed

Current Biomechanical Concepts for Rotator Cuff Repair

Thay Q Lee, PhD

*Orthopaedic Biomechanics Laboratory, Long Beach VA Healthcare System, Long Beach &
Department of Orthopaedic Surgery, University of California, Irvine, CA, USA*

For the past few decades, the repair of rotator cuff tears has evolved significantly with advances in arthroscopy techniques, suture anchors and instrumentation. From the biomechanical perspective, the focus in arthroscopic repair has been on increasing fixation strength and restoration of the footprint contact characteristics to provide early rehabilitation and improve healing. To accomplish these objectives, various repair strategies and construct configurations have been developed for rotator cuff repair with the understanding that many factors contribute to the structural integrity of the repaired construct. These include repaired rotator cuff tendon-footprint motion, increased tendon-footprint contact area and pressure, and tissue quality of tendon and bone. In addition, the healing response may be compromised by intrinsic factors such as decreased vascularity, hypoxia, and fibrocartilaginous changes or aforementioned extrinsic compression factors. Furthermore, it is well documented that torn rotator cuff muscles have a tendency to atrophy and become subject to fatty infiltration which may affect the longevity of the repair. Despite all the aforementioned factors, initial fixation strength is an essential consideration in optimizing rotator cuff repair. Therefore, numerous biomechanical studies have focused on elucidating the strongest devices, knots, and repair configurations to improve contact characteristics for rotator cuff repair. In this review, the biomechanical concepts behind current rotator cuff repair techniques will be reviewed and discussed.

Keywords: *Rotator cuff repair, Load to failure, Biomechanics, Transosseous-equivalent*

Rotator cuff tears are identified as among the most common causes of shoulder pain and dysfunction in adults.^{1,2)} It is estimated that 33% of all orthopedic injuries are related to rotator cuff pathology.²⁻⁴⁾ Clinical and cadaveric studies have shown that the prevalence of rotator cuff tears greatly increases with age. It has been reported that over 50% of patients over the age of 60 have a cuff tear and 80% of patients over the age of 80 have a cuff tear.⁵⁻⁸⁾ This is compounded by occupations that require repetitive overhead activity or patients who are upper extremity dependent, as in spinal cord injury.^{9,10)}

When conservative treatments including activ-

ity modification, physical therapy and steroid injections fail, the current standard of care for rotator cuff injury is surgical repair of the damaged tendon. Traditionally, this repair of a rotator cuff tendon tear has been performed using open or mini-open approaches. As our recent understanding of arthroscopic techniques and its instrumentation continue to improve, arthroscopic rotator cuff repair has become increasingly more popular. There have been several studies in the literature reporting successful outcomes of patients treated by arthroscopic rotator cuff repair.¹¹⁻²¹⁾ While maintaining rotator cuff repair integrity has been correlated to improved outcomes,²²⁻²⁴⁾ the persistent tear rate after open and arthroscopic rotator cuff repair remains remarkably high.²²⁻²⁵⁾ The percentage of revision surgeries has been reported to be as high as 30% for isolated supraspinatus tendon tears and 90% for large multitenon tears.^{23,25-27)} This suggests that advances in repair techniques are needed to optimize the healing en-

Received October 5, 2012; Accepted February 28, 2013

Correspondence to: Thay Q Lee, PhD

Orthopaedic Biomechanics Laboratory, Long Beach VA Healthcare System, 5901 E 7th St 09/151, Long Beach, CA 90822, USA

Tel: +1-562-826-5122, Fax: +1-562-826-5675

E-mail: tqlee@med.va.gov

Copyright © 2013 by The Korean Orthopaedic Association

This is an Open Access article distributed under the terms of the Creative Commons Attribution Non-Commercial License (<http://creativecommons.org/licenses/by-nc/3.0>) which permits unrestricted non-commercial use, distribution, and reproduction in any medium, provided the original work is properly cited.

Clinics in Orthopedic Surgery • pISSN 2005-291X eISSN 2005-4408

vironment after repair in order to facilitate restoration of function.

Many factors contribute to an optimal repair, including repaired rotator cuff tendon-footprint motion,²⁸⁾ increased tendon-footprint contact area,^{1,29,30)} and tissue quality of tendon and bone. The healing response may be reduced by intrinsic factors such as decreased vascularity, hypoxia, and fibrocartilaginous changes or extrinsic compression factors.³¹⁾ Furthermore, it is well documented that torn rotator cuff muscles have a tendency to atrophy and become subject to fatty infiltration which may affect the longevity of the repair.³²⁻³⁶⁾ Initial fixation strength is an essential consideration in optimizing rotator cuff repair and therefore, numerous biomechanical studies have focused on elucidating the strongest devices, knots, and repair configurations for rotator cuff repair.³⁷⁻⁴⁶⁾ In addition, the initial reports demonstrated that standard arthroscopic repairs using a single-row of anchors did not adequately restore the footprint contact area.¹⁾ The technique of using two rows of suture anchors to recreate the native footprint attachment has been recently described.^{47,48)} This “double-row” technique has been shown to closely recreate the repair site of the footprint insertion and would theoretically improve the ability of the tendon to heal to bone. A hybrid or “double-layer” technique using suture anchors medially and transosseous tunnels laterally has been shown to be stronger than repairs using suture anchors or transosseous tunnels alone in a cadaveric cyclic loading model⁴⁶⁾ and also in a sheep model loaded to failure.³⁹⁾ A limitation of this hybrid technique is that in clinical practice, it requires a mini-open or open approach in order to create the

transosseous tunnels. Recently, Kim et al.⁴⁹⁾ reported that footprint reconstruction of the rotator cuff using two rows of suture anchors improves its initial strength and stiffness, and also decreases the gap formation and strain over the footprint when compared to a standard repair using a single-row technique. Further, recent studies have shown that a transosseous tunnel technique provides improved contact area and pressure between rotator cuff tendon and insertion footprint.^{1,50)} Arguably, improved contact characteristics will help maximize healing potential between repaired tendon and tuberosity. In this review, the biomechanical concepts behind current rotator cuff repair techniques will be reviewed and discussed.

BIOMECHANICAL TESTING OF ROTATOR CUFF REPAIR CONSTRUCTS

Tensile testing is generally used to quantify the biomechanical characteristics/structural integrity of repaired constructs (Fig. 1). The tensile testing includes both cyclic loading and loading to failure (Fig. 2). For each cycle of the cyclic loading, two important biomechanical parameters are determined. The first parameter is the linear stiffness of the construct, defined as the slope of the linear portion of the load-elongation curve with units of N/mm. The second parameter is the hysteresis of the construct, defined as the differences in area under the loading and unloading curves on the load-elongation curve. This parameter represents energy dissipated in the construct during each cycle of loading and unloading. This energy can be dissipated in many ways, including suture anchor-bone slippage, knot slippage, and tissue fiber alignment.

From the load to failure tests, four important biome-

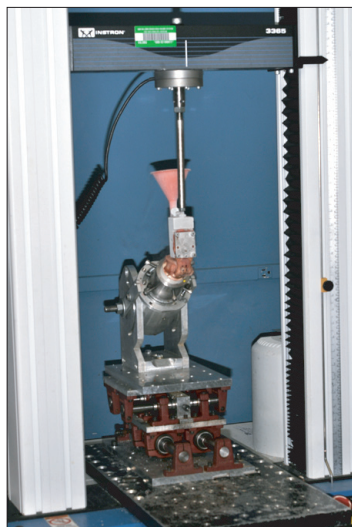


Fig. 1. Supraspinatus repair being loaded with an Instron material testing machine in 30 degrees of abduction.

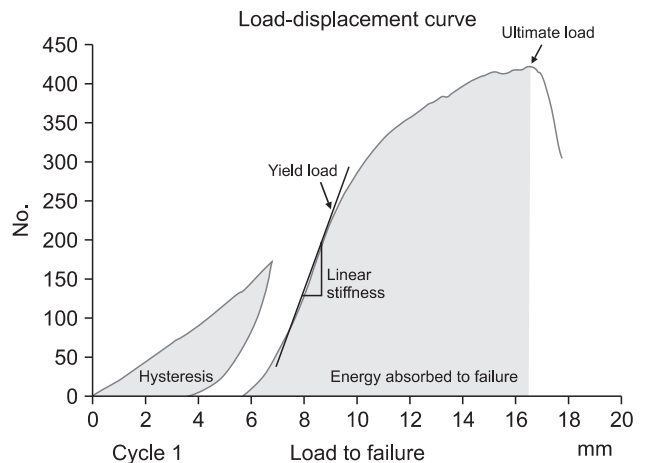


Fig. 2. Typical materials testing load deformation curve for cyclic loading (cycle 1) and load to failure with relevant parameters.

chanical parameters are determined. The first is the linear stiffness of the construct, which is determined in the same fashion as described for cyclic loading. The next parameter is yield load and deformation, which is the load and deformation at which the load/elongation curve deviates from linearity; that is, when the stiffness begins to decrease. The yield load and deformation represents the transition point between elastic and plastic load and deformation of the construct. Prior to reaching yield load and deformation, the construct is in the elastic load and deformation range where all deformation is recoverable, but once surpassing the yield load permanent plastic deformation occurs. The next parameter is the ultimate load and deformation, which represents the maximum load and deformation sustained by the construct prior to failure. Lastly, the energy absorbed by the construct can be calculated at both yield load and ultimate load and deformation by calculating the area under the load-elongation curve. The final biomechanical parameter commonly used is gap formation which is unique to reconstructed tendon bone complex. Gap formation is the migration of the tendon edge away from the footprint with loading. It is typically measured by tracking the markers on the surface of the construct using video digitizing system.^{30,49,51-53}

Single-Row Repair

The treatment of rotator cuff disease progressed to arthroscopic treatment during the 1980s. The first paper to describe arthroscopic subacromial decompression and acromioplasty for chronic external shoulder impingement was Ellman's⁵⁴ in 1985. However, for rotator cuff repair, the open approach with a transosseous repair was consid-

ered the gold standard. This led to the development of suture anchors and improved arthroscopic instrumentation for arthroscopic rotator cuff repairs. The first generation repair techniques involved a single-row of suture anchors placed at the lateral footprint. The suture was then passed through the torn tendon edge and the tendon was tied down to the anchor (Fig. 3). A limitation of this repair is that it relies on the lateral tendon edge for fixation, permitted footprint reconstruction only at the insertion point of the suture anchor. This inability to establish the medial-to-lateral footprint with a single-row construct was thought to be the main source for suboptimal healing rates and high re-tear rates.²² This is clearly demonstrated with the arm in abduction where the medial aspect of the tendon is lifted from the footprint. In a quantitative study, Apreleva et al.¹ investigated contact characteristics for four different repair constructs. They reported that while no repair method completely restored the area of the original supraspinatus insertion, the transosseous repair restored 20% more area than any of the other repair types. This is consistent with a study by Park et al.⁵⁰ in which a bovine model and pressure-sensitive film were used to assess contact characteristics of a transosseous repair versus single-row mattress configuration and single-row simple suture configuration. Once again, the mean contact area and interface pressure were significantly larger in the transosseous repair than either of the single-row constructs.

Cadaveric studies investigating transosseous repairs showed good biomechanical characteristics after repairs.^{28,51,53,55-57} Of these, two interesting studies were the studies by Yu et al.⁵⁷ and Ahmad et al.²⁸ The study by Yu et al.⁵⁷ used cadaveric specimens already with full-thickness, U-shaped supraspinatus tears to determine the biomechanical characteristics before repair, after transosseous repair, and then after creating a complete supraspinatus tear. These authors used a three-dimensional digitizing system to detect any changes in humeral position, and they used pressure-sensitive film to assess any change in contact characteristics. With a simulated complete rotator cuff tear, they found that the humerus shifted inferiorly compared to the repaired supraspinatus tear. Interestingly, there was no increase in glenohumeral contact pressure in the repair group compared to either of the tear groups. The only measurable effect that supraspinatus repair provided was an increase in percent inferior force at 10° abduction and 60 N of load on all muscles. This increase may represent a greater concavity-compression effect, which would provide increased stability of the glenohumeral joint. Ahmad et al.²⁸ quantified the amount of motion between the repaired tendon and bone in a transosseous

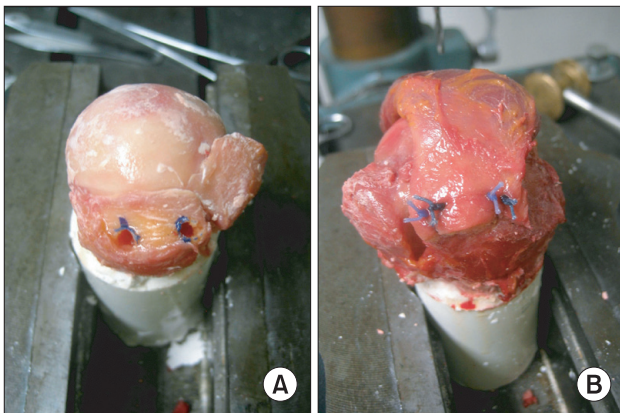


Fig. 3. Single-row supraspinatus rotator cuff repair with two anchor locations placed at the lateral edge of the tendon footprint and simple sutures passed through the torn tendon edge. (A) Anchor locations and (B) final repair.

repair versus a single-row construct. This is important, as the ideal repair construct would minimize motion in the immediate postoperative setting in order to allow healing of the tendon to bone. They found that the transosseous suture repair allowed less motion in internal and external rotation compared to the single-row construct.

Double-Row Repair

Double-row repair was created to increase the footprint contact area and distribute the stress over multiple fixation points. Fealy et al.⁴⁷⁾ originally described a double-row rotator cuff repair using a mini-open approach where one row of suture anchors were placed medially and another laterally. Lo and Burkhart⁴⁸⁾ then described their arthroscopic technique for a double-row repair. The first row is placed just lateral to the articular margin, then the lateral anchors are inserted just medial to the “drop-off” point of the greater tuberosity. The medial sutures are passed through the medial aspect of the tendon in a mattress fashion and tied down. The lateral sutures are then passed through the tendon in a simple suture formation and tied down. This gives medial row and lateral row fixation to increase the contact area of the repair (Fig. 4).

Multiple cadaveric studies have shown the structural integrity superiority of double-row repair compared to single-row repair. This is intuitively obvious due to the added fixation covering a larger footprint area provided by two additional anchors used in double-row fixation compared to single-row fixation. The majority of the studies^{49,58)} showed improved biomechanical characteristics of a double-row repair compared with a single-row repair. There was significantly decreased gap formation at the first and

last cycle, decreased initial strain throughout the entire footprint, as well as increased stiffness and load to failure in the double-row group. These comparisons have been evolving due to different types of rotator cuff tears and past successes of the single-row repairs. For example, with retracted chronic rotator cuff tear, Snyder⁵⁹⁾ has promoted a medialized single-row repair in order to reduce tension on the repair and promote healing. A study by Domb et al.⁶⁰⁾ compared high-tension double-row and a medialized single-row constructs. They found that the high-tension double-row repair fared better than the medialized single-row construct. There was significantly decreased displacement at first cycle, stiffness in the final cycle, and ultimate load to failure. The authors concluded that when possible, a retracted tear should be repaired with a double-row construct. A study by Ma et al.⁶¹⁾ tested a standard double-row repair with three different single-row repairs: the Mason-Allen stitch, massive cuff stitch, and two simple sutures. The massive cuff stitch, first described by Ma et al.,⁴³⁾ uses a horizontal loop as a stop-stitch to prevent pullout. The double-row construct was as good as or better than all single-row repair constructs in all parameters tested.

The “double-layer” rotator cuff repair was developed by Waltrip et al.⁴⁶⁾ and was tested against a single-row construct and a traditional transosseous construct. This double-row technique used a transosseous lateral row along with a medial row of anchors. These authors used cyclic loading to test the constructs and defined failure as a 1 cm gap at the repair site. They reported that double-layer technique required significantly more cycles to fail, but there was no significant difference between the traditional transosseous construct and the single-row construct. This study was consistent with Meier and Meier,⁶²⁾ who compared transosseous, single-row and double-row repairs. Once again using cyclic loading and failure defined as 1 cm of gap formation, the double-row construct showed improved biomechanical characteristics compared to the other groups. The same authors also used three-dimensional mapping to analyze the footprint area restored in single-row, double-row, and transosseous constructs.⁶³⁾ They found that a double-row repair consistently repaired 100% of the area of the footprint, while a single-row construct only restored 46% and a transosseous repair restored only 71% of the footprint.

Finite element models were also used by Sano et al.⁶⁴⁾ to characterize stress concentration at the repair site in a single-row, double-row, and transosseous repair. In the single-row and double-row models, there was a high stress concentration on the bursal surface of the tendon and at the site of the anchors. With simulated muscle contraction,

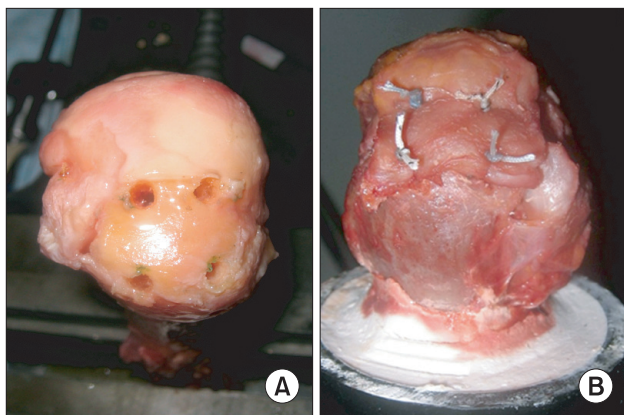


Fig. 4. Original double-row supraspinatus repair with a medial row of suture anchors placed just lateral to the articular margin and the lateral row of suture anchors placed just medial to the “drop off” of the greater tuberosity. (A) Anchor locations and (B) final repair.

the stress moved proximally along the bursal surface of the tendon. In the double-row construct, there was more stress in the medial row of anchors than the lateral row. In the transosseous model, the highest stress concentration was seen at the cortex of the greater tuberosity and at the surface of the bony trough. With simulated muscle contraction, the highest stress stayed in the bony trough, and there was no significant concentration inside the tendon. This is advantageous for chronic rotator cuff tears with a degenerated tendon where the tendon cannot tolerate large amounts of strain.

Transosseous-Equivalent Rotator Cuff Repair

The transosseous-equivalent (TOE) or “suture-bridge” configuration was developed by Park et al.⁶⁵⁾ to provide improved contact area and pressure at the tendon footprint interface to increase healing potential. For this novel repair technique, the medial row of anchors is placed at the articular margin and the sutures are passed in a mattress fashion ideally 10 to 12 mm medial to the lateral edge of the tear. The sutures are then tied but not cut. Instead, a suture limb from each anchor is brought laterally over the “tendon bridge” and fixed using a Bio-Tenodesis screwdriver (Arthrex, Naples, FL, USA). One or two anchors can be used laterally depending on the size of the tear. The lateral fixation points are 1 cm distal to the lateral edge of the tuberosity (Fig. 5). Multiple different knotless suture anchors have been developed for lateral row fixation instead of the Bio-Tenodesis screwdriver. The major differences between the TOE and initial double-row fixation techniques are the suture bridge over the tendon and the

more distal fixation points for the lateral row. The suture bridge connects the medial and lateral rows, as well as the anterior-posterior rows, allowing compression throughout the entire footprint. This highlights the difference between footprint coverage and contact pressure. While a standard double-row repair may allow the same amount of the footprint to be covered, a TOE differs from an unlinked double-row construct in that compression is throughout the entire repair instead of only at the anchor insertion points. By placing the lateral row of anchors orthogonal from rotator cuff-loading vector, a compression vector over the tendon is created to increase pressure at the footprint. This greatly increases the contact pressure along the repaired tendon in the TOE repair compared to the double-row repair.

In biomechanical studies by Park et al.^{29,30)} the TOE and first generation double-row techniques were compared. These authors reported that ultimate load to failure was significantly increased in the TOE group compared to the double-row group. Gap formation and stiffness were not found to be statistically different although there was a trend towards decreased gap formation in the TOE group. They also investigated the contact characteristics of a 4-strand suture bridge versus a standard double-row repair using pressure-sensitive film. There was a significant increase in mean pressurized contact area and mean contact pressure in the TOE group.

The testing methods have also been evolving. In all prior biomechanical studies, the humerus’ rotational degree of freedom was constrained. However, it has been shown that the supraspinatus can act as an internal or external rotator based on the position of the humerus.^{66,67)} Park et al.⁶⁸⁾ also demonstrated that allowing for dynamic external rotation of the humerus with loading changes the gap formation and strain compared to the humerus fixed. They reported that external rotation produces higher gap formation and tendon strain anteriorly than posteriorly. A subsequent study by Park et al.⁶⁹⁾ tested a standard double-row construct with the TOE allowing for dynamic external rotation. They reported that the TOE had a significantly higher yield load than the double-row construct, but there was no difference in gap formation, stiffness, ultimate load to failure, and energy absorbed to failure. Within the TOE construct, they reported that significantly greater gap formation anteriorly than posteriorly, but this was not seen in the double-row group. The authors state that this is likely due to anchor placement; in the double-row construct there is an anchor placed directly at the anterolateral edge of the tear while the anterolateral anchor for the TOE is placed further distal-lateral. This study also highlights the

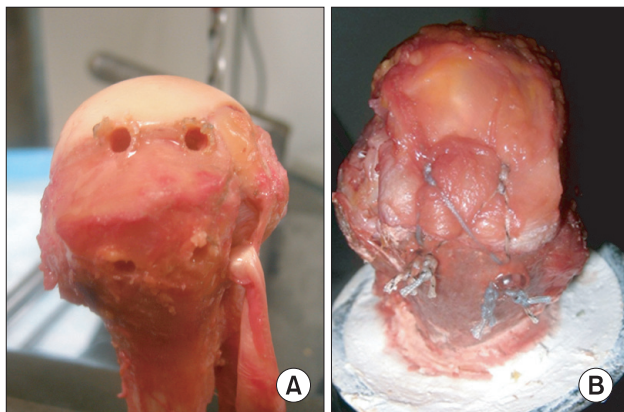


Fig. 5. Transosseous-equivalent supraspinatus repair developed by Park, et al.³⁰⁾ Compared to the original double-row repair, the lateral row of anchors is placed distally, allowing tensioning of the suture bridge that provides compression between the tendon and bone. (A) Anchor locations and (B) final repair.

possible need for stronger anterior fixation with the TOE. In order to prevent gap formation.

The TOE techniques have also evolved and been investigated in more detail. A study by Mazzocca et al.⁷⁰⁾ used a pressure-sensitive sensor to look at different repair constructs over time. These authors tested a single-row, double-row, TOE, and suture-chain TOE. The suture-chain TOE uses FiberChain (Arthrex) to connect the medial and lateral rows, but unlike the TOE, the anterior and posterior anchors are not connected. They reported contact force, pressure and contact area immediately after repair, every minute for the first 10 minutes, every 3 minutes for the next 30 minutes, and then every 30 minutes until a total of 160 minutes. All repair techniques had decreased contact force, pressure and area at 160 minutes compared with immediately after repair, but the TOE had the highest contact pressure and force at all time points. The TOE was the only repair with a statistically significant increase in pressure and contact force when compared with the single-row construct at all time points; however, the TOE also had the greatest loss of force after 160 minutes. The contact pressure in all groups dropped at least 32% after 160 minutes. This study emphasizes the importance of a strong, stable rotator cuff repair in the immediate post-operative period, and it shows that a TOE provides the strongest initial construct and potential for healing. Within the TOE technique, Busfield et al.⁵²⁾ investigated the importance of the medial row knots in a TOE configuration. In both groups with supraspinatus tears, a TOE configura-

tion was used, but in one, the medial row was fixed with a knotless suture anchor while a standard anchor with knots was used in the other group. Biomechanical testing showed greater gap formation during cyclic loading and yield load in the knotless group as well as a decreased ultimate load. Therefore, the authors concluded that a medial row of knots provides a biomechanically stronger construct compared with knotless fixation.

CONCLUSIONS

The rotator cuff plays an integral part in glenohumeral stability and motion. Tears of the rotator cuff alter the biomechanics, including the strain patterns of the intact cuff, which can lead to tear propagation. The goal of creating a better biomechanical construct is to increase initial fixation strength and optimize the mechanical environment for healing. While there is sure to be further evolution of repair constructs, currently the transosseous-equivalent repair developed by Park et al.⁶⁵⁾ consistently provides the best biomechanical characteristics. However, it is important to note that the ideal healing environment for these cuff repairs is still unknown.

CONFLICT OF INTEREST

No potential conflict of interest relevant to this article was reported.

REFERENCES

1. Apreleva M, Ozbaydar M, Fitzgibbons PG, Warner JJ. Rotator cuff tears: the effect of the reconstruction method on three-dimensional repair site area. *Arthroscopy*. 2002;18(5):519-26.
2. Cofield RH. Rotator cuff disease of the shoulder. *J Bone Joint Surg Am*. 1985;67(6):974-9.
3. Hattrup SJ. Rotator cuff repair: relevance of patient age. *J Shoulder Elbow Surg*. 1995;4(2):95-100.
4. Morrison DS, Frogameni AD, Woodworth P. Non-operative treatment of subacromial impingement syndrome. *J Bone Joint Surg Am*. 1997;79(5):732-7.
5. Grant JC, Smith CG. Aging incidence of rupture of the supraspinatus tendon. *Anat Rec*. 1948;100(4):666.
6. Keyes EL. Observations on rupture of the supraspinatus tendon: based upon a study of seventy-three cadavers. *Ann Surg*. 1933;97(6):849-56.
7. Milgrom C, Schaffler M, Gilbert S, van Holsbeeck M. Rotator-cuff changes in asymptomatic adults: the effect of age, hand dominance and gender. *J Bone Joint Surg Br*. 1995;77(2):296-8.
8. Sher JS, Uribe JW, Posada A, Murphy BJ, Zlatkin MB. Abnormal findings on magnetic resonance images of asymptomatic shoulders. *J Bone Joint Surg Am*. 1995;77(1):10-5.
9. Luopajarvi T, Kuorinka I, Virolainen M, Holmberg M. Prevalence of tenosynovitis and other injuries of the upper extremities in repetitive work. *Scand J Work Environ Health*. 1979;5 suppl 3:48-55.
10. Welch LS, Hunting KL, Kellogg J. Work-related musculoskeletal symptoms among sheet metal workers. *Am J Ind Med*. 1995;27(6):783-91.
11. Bennett WF. Arthroscopic repair of massive rotator cuff tears: a prospective cohort with 2- to 4-year follow-up. *Arthroscopy*. 2003;19(4):380-90.

12. Bennett WF. Arthroscopic repair of full-thickness supraspinatus tears (small-to-medium): a prospective study with 2- to 4-year follow-up. *Arthroscopy*. 2003;19(3):249-56.
13. Boszotta H, Prunner K. Arthroscopically assisted rotator cuff repair. *Arthroscopy*. 2004;20(6):620-6.
14. Burkhart SS, Danaceau SM, Pearce CE Jr. Arthroscopic rotator cuff repair: analysis of results by tear size and by repair technique-margin convergence versus direct tendon-to-bone repair. *Arthroscopy*. 2001;17(9):905-12.
15. Gartsman GM, Khan M, Hammerman SM. Arthroscopic repair of full-thickness tears of the rotator cuff. *J Bone Joint Surg Am*. 1998;80(6):832-40.
16. Jones CK, Savoie FH 3rd. Arthroscopic repair of large and massive rotator cuff tears. *Arthroscopy*. 2003;19(6):564-71.
17. Kim SH, Ha KI, Park JH, Kang JS, Oh SK, Oh I. Arthroscopic versus mini-open salvage repair of the rotator cuff tear: outcome analysis at 2 to 6 years' follow-up. *Arthroscopy*. 2003;19(7):746-54.
18. Murray TF Jr, Lajtai G, Mileski RM, Snyder SJ. Arthroscopic repair of medium to large full-thickness rotator cuff tears: outcome at 2- to 6-year follow-up. *J Shoulder Elbow Surg*. 2002;11(1):19-24.
19. Severud EL, Ruotolo C, Abbott DD, Nottage WM. All-arthroscopic versus mini-open rotator cuff repair: a long-term retrospective outcome comparison. *Arthroscopy*. 2003;19(3):234-8.
20. Wilson F, Hinov V, Adams G. Arthroscopic repair of full-thickness tears of the rotator cuff: 2- to 14-year follow-up. *Arthroscopy*. 2002;18(2):136-44.
21. Wolf EM, Pennington WT, Agrawal V. Arthroscopic rotator cuff repair: 4- to 10-year results. *Arthroscopy*. 2004;20(1):5-12.
22. Galatz LM, Ball CM, Teefey SA, Middleton WD, Yamaguchi K. The outcome and repair integrity of completely arthroscopically repaired large and massive rotator cuff tears. *J Bone Joint Surg Am*. 2004;86(2):219-24.
23. Harryman DT 2nd, Mack LA, Wang KY, Jackins SE, Richardson ML, Matsen FA 3rd. Repairs of the rotator cuff: correlation of functional results with integrity of the cuff. *J Bone Joint Surg Am*. 1991;73(7):982-9.
24. Jost B, Pfirrmann CW, Gerber C, Switzerland Z. Clinical outcome after structural failure of rotator cuff repairs. *J Bone Joint Surg Am*. 2000;82(3):304-14.
25. Gazielly DF, Gleyze P, Montagnon C. Functional and anatomical results after rotator cuff repair. *Clin Orthop Relat Res*. 1994;(304):43-53.
26. Goutallier D, Postel JM, Gleyze P, Leguilloux P, Van Driessche S. Influence of cuff muscle fatty degeneration on anatomic and functional outcomes after simple suture of full-thickness tears. *J Shoulder Elbow Surg*. 2003;12(6):550-4.
27. Gerber C, Fuchs B, Hodler J. The results of repair of massive tears of the rotator cuff. *J Bone Joint Surg Am*. 2000;82(4):505-15.
28. Ahmad CS, Stewart AM, Izquierdo R, Bigliani LU. Tendon-bone interface motion in transosseous suture and suture anchor rotator cuff repair techniques. *Am J Sports Med*. 2005;33(11):1667-71.
29. Park MC, ElAttrache NS, Tibone JE, Ahmad CS, Jun BJ, Lee TQ. Part I: Footprint contact characteristics for a transosseous-equivalent rotator cuff repair technique compared with a double-row repair technique. *J Shoulder Elbow Surg*. 2007;16(4):461-8.
30. Park MC, Tibone JE, ElAttrache NS, Ahmad CS, Jun BJ, Lee TQ. Part II: Biomechanical assessment for a footprint-restoring transosseous-equivalent rotator cuff repair technique compared with a double-row repair technique. *J Shoulder Elbow Surg*. 2007;16(4):469-76.
31. Carpenter JE, Flanagan CL, Thomopoulos S, Yian EH, Soslowsky LJ. The effects of overuse combined with intrinsic or extrinsic alterations in an animal model of rotator cuff tendinosis. *Am J Sports Med*. 1998;26(6):801-7.
32. Soslowsky LJ, Thomopoulos S, Esmail A, et al. Rotator cuff tendinosis in an animal model: role of extrinsic and overuse factors. *Ann Biomed Eng*. 2002;30(8):1057-63.
33. Kuhn JE, Bey MJ, Huston LJ, Blasler RB, Soslowsky LJ. Ligamentous restraints to external rotation of the humerus in the late-cocking phase of throwing: a cadaveric biomechanical investigation. *Am J Sports Med*. 2000;28(2):200-5.
34. Thomopoulos S, Williams GR, Soslowsky LJ. Tendon to bone healing: differences in biomechanical, structural, and compositional properties due to a range of activity levels. *J Biomech Eng*. 2003;125(1):106-13.
35. Uthoff HK, Matsumoto F, Trudel G, Himori K. Early reattachment does not reverse atrophy and fat accumulation of the supraspinatus: an experimental study in rabbits. *J Orthop Res*. 2003;21(3):386-92.
36. Uthoff HK, Sano H, Trudel G, Ishii H. Early reactions after reimplantation of the tendon of supraspinatus into bone: a study in rabbits. *J Bone Joint Surg Br*. 2000;82(7):1072-6.
37. Caldwell GL, Warner JP, Miller MD, Boardman D, Towers J, Debski R. Strength of fixation with transosseous sutures in rotator cuff repair. *J Bone Joint Surg Am*. 1997;79(7):1064-8.
38. Craft DV, Moseley JB, Cawley PW, Noble PC. Fixation

- strength of rotator cuff repairs with suture anchors and the transosseous suture technique. *J Shoulder Elbow Surg.* 1996; 5(1):32-40.
39. Demirhan M, Atalar AC, Kilicoglu O. Primary fixation strength of rotator cuff repair techniques: a comparative study. *Arthroscopy.* 2003;19(6):572-6.
 40. Goradia VK, Mullen DJ, Boucher HR, Parks BG, O'Donnell JB. Cyclic loading of rotator cuff repairs: a comparison of bioabsorbable tacks with metal suture anchors and transosseous sutures. *Arthroscopy.* 2001;17(4):360-4.
 41. Koh JL, Szomor Z, Murrell GA, Warren RF. Supplementation of rotator cuff repair with a bioresorbable scaffold. *Am J Sports Med.* 2002;30(3):410-3.
 42. Lee S, Mahar A, Bynum K, Pedowitz R. Biomechanical comparison of bioabsorbable sutureless screw anchor versus suture anchor fixation for rotator cuff repair. *Arthroscopy.* 2005;21(1):43-7.
 43. Ma CB, MacGillivray JD, Clabeaux J, Lee S, Otis JC. Biomechanical evaluation of arthroscopic rotator cuff stitches. *J Bone Joint Surg Am.* 2004;86(6):1211-6.
 44. Reed SC, Glossop N, Ogilvie-Harris DJ. Full-thickness rotator cuff tears: a biomechanical comparison of suture versus bone anchor techniques. *Am J Sports Med.* 1996;24(1):46-8.
 45. Schneeberger AG, von Roll A, Kalberer F, Jacob HA, Gerber C. Mechanical strength of arthroscopic rotator cuff repair techniques: an in vitro study. *J Bone Joint Surg Am.* 2002; 84(12):2152-60.
 46. Waltrip RL, Zheng N, Dugas JR, Andrews JR. Rotator cuff repair: a biomechanical comparison of three techniques. *Am J Sports Med.* 2003;31(4):493-7.
 47. Fealy S, Kingham TP, Altchek DW. Mini-open rotator cuff repair using a two-row fixation technique: outcomes analysis in patients with small, moderate, and large rotator cuff tears. *Arthroscopy.* 2002;18(6):665-70.
 48. Lo IK, Burkhart SS. Double-row arthroscopic rotator cuff repair: re-establishing the footprint of the rotator cuff. *Arthroscopy.* 2003;19(9):1035-42.
 49. Kim DH, Elattrache NS, Tibone JE, et al. Biomechanical comparison of a single-row versus double-row suture anchor technique for rotator cuff repair. *Am J Sports Med.* 2006;34(3):407-14.
 50. Park MC, Cadet ER, Levine WN, Bigliani LU, Ahmad CS. Tendon-to-bone pressure distributions at a repaired rotator cuff footprint using transosseous suture and suture anchor fixation techniques. *Am J Sports Med.* 2005;33(8):1154-9.
 51. Behrens SB, Bruce B, Zonno AJ, Paller D, Green A. Initial fixation strength of transosseous-equivalent suture bridge rotator cuff repair is comparable with transosseous repair. *Am J Sports Med.* 2012;40(1):133-40.
 52. Busfield BT, Glousman RE, McGarry MH, Tibone JE, Lee TQ. A biomechanical comparison of 2 technical variations of double-row rotator cuff fixation: the importance of medial row knots. *Am J Sports Med.* 2008;36(5):901-6.
 53. Chhabra A, Goradia VK, Francke EI, et al. In vitro analysis of rotator cuff repairs: a comparison of arthroscopically inserted tacks or anchors with open transosseous repairs. *Arthroscopy.* 2005;21(3):323-7.
 54. Ellman H. Arthroscopic subacromial decompression: a preliminary report. *Orthop Trans.* 1985;9:49.
 55. Bicknell RT, Harwood C, Ferreira L, et al. Cyclic loading of rotator cuff repairs: an in vitro biomechanical comparison of bioabsorbable tacks with transosseous sutures. *Arthroscopy.* 2005;21(7):875-80.
 56. Tuoheti Y, Itoi E, Yamamoto N, et al. Contact area, contact pressure, and pressure patterns of the tendon-bone interface after rotator cuff repair. *Am J Sports Med.* 2005;33(12):1869-74.
 57. Yu J, McGarry MH, Lee YS, Duong LV, Lee TQ. Biomechanical effects of supraspinatus repair on the glenohumeral joint. *J Shoulder Elbow Surg.* 2005;14(1 Suppl S):65S-71S.
 58. Smith CD, Alexander S, Hill AM, et al. A biomechanical comparison of single and double-row fixation in arthroscopic rotator cuff repair. *J Bone Joint Surg Am.* 2006;88(11):2425-31.
 59. Snyder SJ. Single vs. double row suture anchor fixation rotator cuff repair. In: American Orthopaedic Society of Sports Medicine Specialty Day at the 75th Annual Meeting of the American Academy of Orthopaedic Surgeons; 2007 Mar 8; San Francisco, CA, USA.
 60. Domb BG, Glousman RE, Brooks A, Hansen M, Lee TQ, ElAttrache NS. High-tension double-row footprint repair compared with reduced-tension single-row repair for massive rotator cuff tears. *J Bone Joint Surg Am.* 2008;90 Suppl 4:35-9.
 61. Ma CB, Comerford L, Wilson J, Puttitz CM. Biomechanical evaluation of arthroscopic rotator cuff repairs: double-row compared with single-row fixation. *J Bone Joint Surg Am.* 2006;88(2):403-10.
 62. Meier SW, Meier JD. The effect of double-row fixation on initial repair strength in rotator cuff repair: a biomechanical study. *Arthroscopy.* 2006;22(11):1168-73.
 63. Meier SW, Meier JD. Rotator cuff repair: the effect of double-row fixation on three-dimensional repair site. *J Shoulder Elbow Surg.* 2006;15(6):691-6.

64. Sano H, Yamashita T, Wakabayashi I, Itoi E. Stress distribution in the supraspinatus tendon after tendon repair: suture anchors versus transosseous suture fixation. *Am J Sports Med.* 2007;35(4):542-6.
65. Park MC, Elattrache NS, Ahmad CS, Tibone JE. "Transosseous-equivalent" rotator cuff repair technique. *Arthroscopy.* 2006;22(12):1360.e1-5.
66. Gates JJ, Gilliland J, McGarry MH, et al. Influence of distinct anatomic subregions of the supraspinatus on humeral rotation. *J Orthop Res.* 2010;28(1):12-7.
67. Ihashi K, Matsushita N, Yagi R, Handa Y. Rotational action of the supraspinatus muscle on the shoulder joint. *J Electromyogr Kinesiol.* 1998;8(5):337-46.
68. Park MC, Jun BJ, Park CJ, Ahmad CS, ElAttrache NS, Lee TQ. The biomechanical effects of dynamic external rotation on rotator cuff repair compared to testing with the humerus fixed. *Am J Sports Med.* 2007;35(11):1931-9.
69. Park MC, Idjadi JA, Elattrache NS, Tibone JE, McGarry MH, Lee TQ. The effect of dynamic external rotation comparing 2 footprint-restoring rotator cuff repair techniques. *Am J Sports Med.* 2008;36(5):893-900.
70. Mazzocca AD, Bollier MJ, Ciminiello AM, et al. Biomechanical evaluation of arthroscopic rotator cuff repairs over time. *Arthroscopy.* 2010;26(5):592-9.