

UCLA

UCLA Previously Published Works

Title

Does decentralization encourage pro-poor targeting? Evidence from Kenya's constituencies development fund

Permalink

<https://escholarship.org/uc/item/64m9z0fm>

Authors

Harris, J Andrew
Posner, Daniel N

Publication Date

2022-07-01

DOI

10.1016/j.worlddev.2022.105845

Peer reviewed



Does decentralization encourage pro-poor targeting? Evidence from Kenya's constituencies development fund [☆]

J. Andrew Harris ^{a,*}, Daniel N. Posner ^b

^a Division of Social Science, New York University Abu Dhabi, United Arab Emirates

^b Department of Political Science, University of California, Los Angeles, United States



ARTICLE INFO

Article history:

Accepted 4 February 2022

Keywords:

Africa
Poverty
Resource distribution
Kenya
Development

ABSTRACT

Decentralization is thought to facilitate poverty reduction by giving power over resource distribution to officials with local knowledge about where resources are most needed. However, decentralization also implies less oversight and greater opportunities for local officials to divert resources for political or personal ends. We investigate this tradeoff by exploring the degree to which Kenya's premier decentralized development program—the Constituency Development Fund—targets the poor. Using a detailed spatial dataset of 32,000 CDF projects and data on the local distribution of poverty within Kenyan constituencies, we find that most MPs do not target the poor in their distribution of CDF projects. In places where they do, this tends to be in constituencies that are more rural, not too large, and, in keeping with the findings in [Harris and Posner \(2019\)](#), where the poor and non-poor are spatially segregated from one another. Our analyses suggest that the poor are underserved not just because politicians lack incentives to target them with development resources but because the poor are challenging to reach. In addition to these substantive findings, we also make a methodological contribution by underscoring how aggregation to the administrative unit may truncate important variation within geographic areas, and how a point-level analysis may avoid this pitfall.

© 2022 Published by Elsevier Ltd.

1. Introduction

When the Constituencies Development Fund (CDF) Act was passed by Kenya's parliament in 2003, it was heralded as a major tool for poverty alleviation. The language of the Act, which provided for 2.5 percent of all ordinary government revenues to be redistributed to the country's 210 electoral constituencies, emphasized that the purpose of this decentralization of allocative authority was to “ensure that a specific portion of the national annual budget is devoted to the constituencies for purposes of development and in particular in the fight against poverty [emphasis added] at the constituency level” ([Government of Kenya, 2003](#)). Contributors to the parliamentary debates on the legislation echoed this objective. One Member of Parliament (MP) described the bill as heralding “a new dawn in this country” that “will help uplift the

poor conditions...[and] alleviate the poverty that is deep rooted down in some of the constituencies.”¹ The Minister of Finance introduced the second reading of the bill by referring to it as an important piece of legislation that will “assist in alleviating poverty by ensuring that the poorest of the poor have a voice in determining what projects they want to do. It will also enable Hon. Members to assist the government in channeling whatever development funds there are to the right areas in their constituencies because they know the problems in depth.”² Another supporter of the bill emphasized that “the shoe owner knows where it pinches most. The people in the grassroots know the problems affecting them. Therefore, if they are financed in this manner, they will know where to put that little resource effectively.”³

These arguments reflect several of the major theoretical rationales for decentralization in the academic literature ([Bardhan, 2002](#); [Treisman, 2007](#); [Mansuri & Rao, 2013](#); [Faguet, 2014](#)). Chief

Prepared for a symposium in honor of Robert Bates, Harvard University, 2-3 October 2020. The authors thank Ryan Briggs, Carl Müller-Crepon, Alberto Diaz-Cayeros, seminar participants at UCSB and Oxford, and two anonymous reviewers for helpful comments.

* Corresponding author.

E-mail addresses: andy.harris@nyu.edu (J.A. Harris), dposner@polisci.ucla.edu (D.N. Posner).

¹ Hon. Betty Tett, Assistant Minister for Local Government, Parliamentary Debates 27 November 2003.

² Hon. David Mwiraria, Minister of Finance, Parliamentary Debates, 27 November 2003.

³ Hon. Capt. Eustace Mbuba Ntwiga, MP for Nithi, Parliamentary Debates, 23 October 2002.

among them is the idea that, by putting decision-making power over local resource distribution in the hands of the elected officials who are closest to the people (in the case of the CDF Act, MPs elected in single member constituencies), decentralization will ensure that development projects are targeted to the places where they are most needed. This is because locally elected officials have better information about local needs than decision makers located far away in centralized bureaucracies, and also because the behavior of these officials is more readily observed by the communities they serve, thus making the officials more accountable.

The theoretical reasons to think that decentralization will aid in targeting the poor are, however, in tension with the concern that local officials may be more readily captured by the socially connected or politically valuable, or by actors who are able to provide favors or kickbacks in return for the allocation (Crook, 2003; Galasso & Ravallion, 2005; Mansuri & Rao, 2013; Hoffmann, Jakiela, Kremer, Sheely, & Goodkin-Gold, 2017). Proximity to the *wananchi* may provide access to local information, but it also implies distance from the central government and the national press—and hence less oversight, greater opportunities for malfeasance, and patterns of targeting that may be less favorable for the poor than theory would lead us to expect.

We examine this trade-off between local information and local capture in the context of the first five years of Kenya's CDF program. Leveraging unique data on the precise geo-locations of 32,000 CDF projects initiated during this period, along with fine-grained data on the local distribution of poverty, we employ spatial modeling techniques to investigate whether MPs allocated CDF projects to areas with greater numbers of poor people.⁴ We find little evidence that they did. Instead, we find that, once we have controlled for other factors that may explain project placement (such as local population density, distance to paved roads, coethnicity with the MP, and levels of local support for the MP in the prior election), the number of poor people in a given area is negatively associated with CDF project placement in most constituencies. Where MPs do target CDF resources to areas with more poor people, this tends to occur in smaller, less urban constituencies and where the MP is affiliated with the ruling political coalition. We also find, in keeping with the results in Harris and Posner (2019), that targeting the poor is significantly more likely in settings where the poor and non-poor are spatially segregated from one another. These findings speak to the importance of factors that affect the *feasibility* of targeting the poor, and stand in contrast to accounts emphasizing the *incentives* for political actors to adopt pro-poor distribution strategies.

Beyond these empirical results, the paper makes several broader contributions. A first contribution is to the literature analyzing the origins and impact of constituency development funds (Keefer & Khemani, 2009; Baskin & Mezey, 2014; Malik, 2019), as well as to the subset of this literature that focuses explicitly on the Kenyan case (Kimenyi, 2005; Bagaka, 2009; Nyamori, 2009; Nyaguthii & Oyugi, 2013; Ndi, 2014; Ngacho & Das, 2014; Harris, 2017). Our paper complements this prior, largely qualitative, work by bringing rich quantitative data to bear on the question of how politicians use the funds that CDF programs make available to them.

The paper also relates to the literature investigating the impact of decentralization on poverty alleviation (Alderman, 2002; Crook, 2003; Bardhan & Mookherjee, 2005; Galasso & Ravallion, 2005; Bardhan & Mookherjee, 2006; Alatas, Banerjee, Hanna, Olken, & Tobias, 2012; Carlitz, 2017; Basurto, Dupas, & Robinson, 2020). Although our analysis does not permit comparisons across units that were and were not decentralized (and thus cannot tell us

⁴ Pro-poor targeting could be defined in terms of whether projects are placed in areas with higher numbers of poor people or higher rates of poverty. We focus on the former measure, discussing the implications of this decision in the conclusion.

whether decentralization caused poverty rates to rise or fall), our evidence does shed light on whether the opportunities afforded by decentralization are seized upon by political actors to better target the poor. In this respect, our work is similar to most other efforts in the literature—like those cited above—that take decentralization as a given and study whether the behavior of actors operating under such a system accords with theoretical expectations. In keeping with the results of most of these studies, our findings suggest that decentralization is not associated with high rates of targeting the poor with development resources.

The paper also speaks to the broader literature on aid targeting (Briggs, 2014; Jablonski, 2014; Öhler & Nunnenkamp, 2014; Nunnenkamp, Sotirova, & Thiele, 2016; Briggs, 2017; Öhler, Negre, Smets, Massari, & Bogetic, 2019; Dipendra, 2020; Wayoro & Ndikumana, 2020)—especially the subset of that literature that employs highly disaggregated local data on project placement alongside covariates measured at the micro-level (Chhibber & Jensenius, 2016; Carlitz, 2017; Hoffmann et al., 2017; Briggs, 2018; Briggs, 2018; Ejdemyr, Kramon, & Robinson, 2018; Murray, 2020; Brierley, 2021). While our study joins these others in leveraging highly disaggregated data, the degree of disaggregation offered by our point-level empirical approach (described below) goes well beyond that of other research. For example, the analysis presented in Briggs (2018) employs 0.5×0.5 degree grid cells as its unit of analysis. There are approximately 234 such grid cells in Kenya (including those that span the borders between Kenya and its neighbors). Our main analysis, by contrast, is built on an investigation of more than 32,000 point-level observations, allowing us to understand the determinants of project placement across continuous space. As we describe below, this extremely high degree of disaggregation allows for much more precise and meaningful estimates of the local relationship between poverty rates and patterns of CDF project placement.

Our study also contributes to the aid targeting literature by studying the distribution of development funds within nearly 200 distinct constituency-level units, rather than, as is usually the case in such analyses, within a single country. This makes it possible to investigate the ways in which both local conditions and the characteristics of the political actors making the allocation decisions shape the ways development funds are targeted. As we demonstrate, such factors are critically important in explaining when and where MPs target the poor with their CDF funds.

Finally, our study contributes to the growing literature on political geography (Enos, 2017; Jusko, 2017; Ejdemyr et al., 2018; Rickard, 2018; Rodden, 2019) by demonstrating the critical importance of the spatial distribution of poor people in explaining distributive patterns. As in Harris and Posner (2019), our findings suggest that analyses that fail to incorporate the spatial distribution of key groups may generate misleading conclusions about how distributive politics operates.

2. The constituencies development fund (CDF) Program in Kenya

During the period we study (2003–2007), Kenya's national CDF Fund provided each MP with an average of \$316,709 per year to be used for any project whose “prospective benefits are available to a widespread cross-section of the inhabitants of a particular area” (Government of Kenya, 2003). These funds, which were distributed equally to each constituency with some adjustments based on each constituency's poverty rate, underwrote an average of 157 projects per constituency (min = 11; max = 425).⁵

⁵ Additional discussion of the CDF program's origins and details are provided in Harris and Posner (2019).

Although CDF funds were technically disbursed from the central government to constituency-level CDF committees, their local distribution was effectively controlled by the MP, who determined which projects were funded and where they were located.⁶ Citizens and organized groups were invited to apply for projects, but the MP determined which projects were funded and where they were located. Bureaucrats and ministry officials played no role in these decisions.⁷ The CDF program thus presented each MP with a large, annually replenished, exogenously determined sum of money that, subject to minimal restrictions, could be allocated within his constituency with nearly total discretion.⁸ This provides an ideal opportunity to observe whether political actors to whom decision making authority has been decentralized distribute the resources they control with an eye toward poverty reduction. And since we can observe such distribution decisions by 196 political actors, each operating in a different context, we can also draw important lessons about the conditions under which they pursue such a strategy.⁹

3. Data

To assess whether MPs use their CDF allocations to maximize their impact on poverty alleviation, we estimate the spatial association between CDF project placement and local poverty headcounts. This requires geo-coded data on both project locations and the number of poor people in each area, as well as fine-grained spatial data on the other covariates we include in our analyses.

3.1. CDF project locations

The CDF project data we utilize come from the annual reports that MPs are required to submit to the national CDF Board.¹⁰ These reports provide project names and information about the activity completed (e.g., Mwachema borehole; Olopito Dam repair; Chitago Primary School refurbishment), as well as the amount of money allocated to the project in that year. The reports do not, however, provide geo-coordinates of project locations. We estimate these locations by matching the project names to the names of facilities for which point or polygon data are available—for example, schools, market towns, health centers, or water/irrigation features. Using this approach, we were able to match 60 percent of all 32,699 CDF projects in our data set to an exact geo-referenced point. In cases where we were not able to match a project to a specific point, we randomly placed the project at a point within the smallest unit to which we could assign it, with the probability of placing the project at each point in the unit proportional to the estimated population density at that point. In roughly a third of these cases, the unit to which we match the project has an area of 1 square kilometer or less; in another 12.5 percent of cases, it was an area of 2.5 km or less—both

well inside the radius within which residents would benefit from most projects. In all, 80 percent of projects were placed within an area smaller than 0.5 percent of the total constituency area and 88.3 percent within an area smaller than 5 percent of the constituency area.

To account for measurement error in our imputation of project locations, we created 21 separate data sets of imputed project locations and ran all of the analyses in which project locations are the dependent variable on each of these 21 separate data sets. The results we report below are the average coefficient estimates of these 21 separate regressions, with standard errors calculated following the procedures discussed in King, Honaker, Joseph, and Scheve (2001).

In the first set of analyses we present below, we aggregate project locations to the sublocation level. In the later analyses, we use the precise point-level estimates of project locations.

3.2. Explanatory variables

Our main independent variable provides an estimate of the number of poor people at each point in each constituency. To build this variable, we combine two sources of spatial data on poverty rates and population density. The spatial poverty rate data of Tatem, Gething, Pezzulo, Weiss, and Bhatt (2015) reports estimates of the proportion of the population in each one-square kilometer grid cell defined as poor via the multidimensional poverty indicator described in Alkire and Santos (2014).¹¹ For population density, we use the raster data described in Linard, Gilbert, Snow, Noor, and Tatem (2010), which provides spatial data on the estimated count of individuals at each point in Kenya. To arrive at a count of those falling below the poverty line for each one kilometer grid square, we reproject the poverty data to match that of the population density raster and then multiply the poverty raster by the population density raster.

This approach does have limitations. Chief among them is that the poverty data are spatially smoothed estimates of actual poverty. As a result, we recognize that, as with all data, these estimates are measured with error (though, as discussed in footnote 11 above, this error is low and appears to be unbiased). However, we cannot identify another source that would provide us with something more akin to direct observations of poverty at a similarly micro-level for the entire Kenyan landmass.¹²

In some of the analyses we present below, we also control for a series of other factors that we have reason to believe may shape the distribution of CDF funds. The first of these is population density, which we measure using data from Linard et al. (2010), as noted. Population density may matter for project allocations insofar as MPs seek to help the greatest number of people and/or avoid placing projects where very few will benefit. It may also matter if

⁶ Hornsby (2013) describes the MP's powers to distribute CDF funds during this period as "almost unchecked." Ongoya and Lumallas (2005) describe the CDF Act as giving "total control, management and supervision to the MPs [who] control the fund through either chairing [the local CDF committee] or handpicking those who run the fund."

⁷ Indeed, MPs quickly learned that projects like dispensaries, police posts, or new schools that required ministries to provide staffing were not a good use of CDF funds, as such staffing was rarely provided. Instead, CDF projects tended to be spent on improvements to existing infrastructure: constructing or rehabilitating classrooms at an existing primary school, renovating an administration block at the district headquarters, constructing a maternity ward for a clinic, or repairing an existing water system.

⁸ Only three percent of the MPs in our sample are female, so we use the male pronoun throughout for simplicity.

⁹ Kenya had 210 constituencies during the period we study. However, fourteen constituencies are excluded from the analysis due to lack of data on CDF projects.

¹⁰ Further information about these data, as well as a discussion of their trustworthiness, is provided in Harris and Posner (2019).

¹¹ To construct these data, Tatem et al. (2015) develop a spatial model of poverty measures derived from 397 randomly-sampled DHS clusters as a function of a dozen spatial covariates like nighttime lights, elevation, aridity, and accessibility. To fine tune the model-based predictions that populate the raster, the authors carry out a ten-fold, hold-out cross-validation procedure, which demonstrates the estimates are unbiased with a mean error of just -0.003 . Moreover, the correlation between predicted and observed poverty values is over 97%, suggesting that the predicted poverty measures we use to understand project placement track observed poverty well.

¹² One natural candidate is data on night-time lights, which tracks higher-levels of electrification, a commonly used proxy for poverty. We chose not to pursue this empirical strategy for two reasons. First, significant proportions of the Kenyan population—both poor and more well-off—choose to remain "under-grid" (Lee et al., 2016). This implies that visible nighttime light likely does not track patterns of poverty in isolation, particularly in rural areas, which comprise most of the land areas we analyze. Second, nighttime lights show very little variation within rural constituencies, simply because most areas are either un electrified or possess insufficient lighting to be detected by remote sensing. Bruederle and Hodler (2018) reports that over half of the continent shows no stable visible light at all. Also see Andersson, Hall, and Archila (2019) and Maatta and Lessmann (2019) on this topic.

MPs seek not to help people but to win their votes, in which case it makes sense to put projects close to the greatest number of voters. We also utilize the World Bank/Kenya Ministry of Roads and Public Works dataset (Government of Kenya, 2006) to create a raster identifying the square of the distance from each point in each constituency to a paved road. Since projects located closer to paved roads are cheaper to build, and since MPs have incentives to try to stretch their limited budgets, we might expect areas located closer to paved roads to receive more CDF projects.¹³ Controlling for distance to roads is also appropriate because most CDF projects involve repairs or upgrades to existing infrastructure, and most such infrastructure is located close to roads.

MPs may also seek to use the CDF funds to favor their ethnic kin and/or reward their political supporters. We control for the former using polling station-level estimates of ethnic demographics from Harris (2015) and linking them to a geo-referenced polling station dataset.¹⁴ We combine these two data sources to create rasters for each constituency identifying the estimated number of the MP's coethnics at each point in each constituency. We test for the MP's partisan connection to voters at every point in the constituency using similarly constructed data built from polling station-level electoral returns from Kenya's 2002 parliamentary elections. These elections took place a year before the launch of the CDF program and can thus be taken as exogenous to any effects that the program might have subsequently had on election outcomes.

Although our main objective in this paper is to estimate the spatial association between poverty and project placement, a secondary aim is to demonstrate the value and power of disaggregated data in understanding how benefits are targeted to constituents. To this end, we begin with an analysis aggregated to the sub-location level—the smallest administrative unit in Kenya—representing the functional limit of an aggregated polygon-based approach to the study of targeting. Then, we contrast these results with our findings using point-level data.

4. A sublocation-level analysis of pro-poor targeting

Investigating whether CDF funds are used to target the poor requires analyzing project allocation decisions at the constituency level, since this is the level at which decisions are made about which CDF projects will be funded and where they will be placed. As a first cut, we aggregate our data to the sublocation level, estimating within each constituency whether sublocations with greater numbers of people living in poverty receive more CDF projects.¹⁵ This approach is in keeping with other studies of aid targeting and distributive politics, which aggregate their analyses to various administrative units: the district (Weinstein, 2011; Burgess, Jedwab, Miguel, Morjaria, & i Miquel, 2015; Masaki, 2018), the constituency (Jablonski, 2014), the village (Chhibber & Jensenius, 2016; Hoffmann et al., 2017), the ward (Carlitz, 2017), or the census enumeration area (Ejdemyr et al., 2018; Briggs, 2018; Brierley, 2021).¹⁶

We regress the number of CDF projects in each sublocation on sublocation-level poverty headcounts. As shown in Fig. 1, we find a robust positive relationship: poorer sublocations receive more CDF projects. Our results hold whether we measure CDF projects

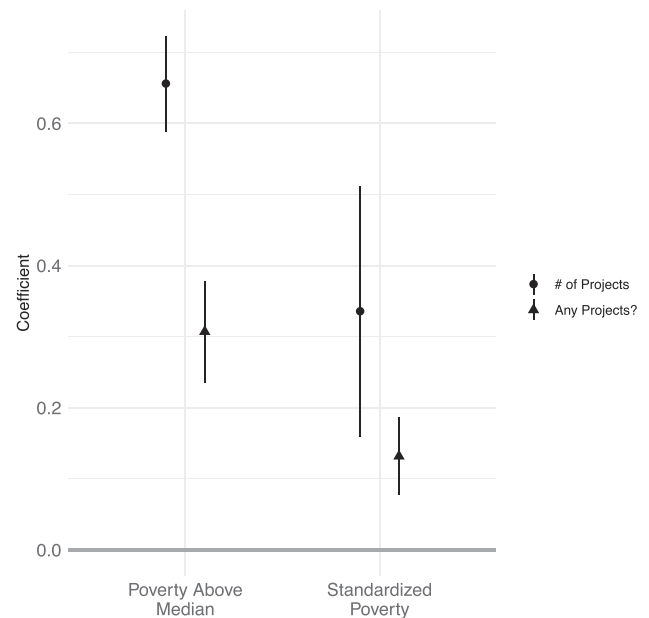


Fig. 1. Predicting CDF project outcomes using poverty headcounts. The plotted coefficients show that CDF project placement, whether measured as a count or an indicator of project presence within a sublocation, exhibits a positive relationship with average sublocation poverty headcounts.

in each sublocation with a count variable or via an indicator of whether the sublocation received any CDF projects at all. They also hold whether we operationalize the poverty headcount in terms of the number of people in the sublocation living below the poverty line or whether this number is above or below the median in the constituency.¹⁷ The results suggest that MPs do in fact target CDF projects to the poorest sublocations.

Several factors caution against reading too much into these findings, however. First, the analysis does not control for sublocation population levels. While it might be tempting to interpret the results in Fig. 1 as evidence that MPs are targeting the poor, an alternative explanation is that MPs are simply putting projects in more populated sublocations, which, because of the generally high levels of poverty everywhere, happen to have large numbers of poor people. Adjudicating between these two explanations requires adding a measure of sublocation-level population alongside the poverty headcount measure.¹⁸ The analysis also does not consider other factors—distance from paved roads, the desire to reward political supporters or to favor ethnic kin—that may have caused CDF projects to have been placed in some sublocations rather than others, perhaps overriding considerations of poverty alleviation. Ideally, we would want to estimate the relationship between poverty and project placement net of these factors.¹⁹

¹³ This expectation accords with the finding in the aid targeting literature that development aid tends to be channeled disproportionately to places that are more easily accessible (Brass, 2012, 2021).

¹⁴ See Harris and Posner (2019) Appendix B for detail on this data construction process.

¹⁵ Kenya contains roughly 6,000 sublocations, with an average of about 30 per constituency (min = 6; max = 101). Sublocations have a median area of about 15 square kilometers (min < 1 sq. km.; max > 4,500 sq. km.) and a median population of about 3,700 (min < 10; max > 120,000.), according to 2009 census data.

¹⁶ Briggs (2018) takes a slightly different approach, aggregating not to a pre-existing administrative unit but to the 0.5 × 0.5 degree grid square.

¹⁷ The results are also robust to including or excluding constituency fixed effects. The results shown in Fig. 1 are from models that include constituency fixed effects.

¹⁸ The fact that the sign on the results in Fig. 1 flip when we substitute poverty counts with poverty rates (see Appendix B1) suggests that population levels do in fact matter a lot for these findings.

¹⁹ Briggs (2018) argues that, for a purely descriptive analysis of whether poorer people are more likely to get CDF projects, one would not want to include control variables, noting that “aid can help the poor only if it reaches the poor—and from this point of view it does not matter if the mechanism causing it to reach the poor is something other than poverty” (134). However, our question of interest is not whether poor people get CDF projects but whether MPs target the poor when they decide where to place those projects. We are interested in an allocation decision rather than a descriptive outcome. Our view is that we can only understand this allocation decision if we can rule out the other explanations that we have reason to believe may also affect MPs' choices regarding project placement (such as seeking to reduce the cost of locating a project in a particular place, seeking to reward supporters or coethnics, or seeking to maximize the number of people who will benefit from the project, irrespective of their poverty).

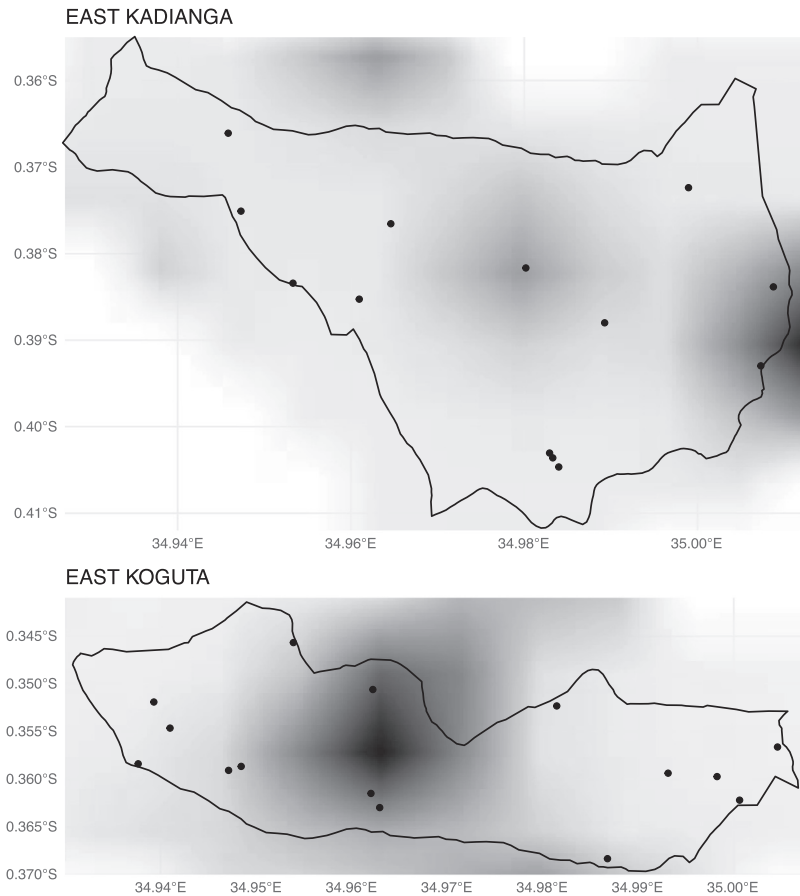


Fig. 2. Project placement and variation in local poverty headcounts. Darker shading indicates more people living in poverty.

Second, the aggregation of poverty rates and CDF project counts to the sublocation level may obscure significant within-sublocation variation.²⁰ Fig. 2, which displays CDF project locations and poverty headcounts estimated at the point-level in two sublocations in Nyakach Constituency, demonstrates this point clearly. In the analysis summarized in Fig. 1, the only relevant information about these two sublocations is the number of CDF projects they each contain (12 and 15 projects, respectively) and the estimated number of people living in poverty (14,419 and 8,129, respectively). The analysis ignores the significant within-sublocation spatial variation in both of these variables. If MPs are allocating projects with an eye toward poverty reduction, we would expect more projects to be located in the darker shaded areas of each sublocation, since these are the areas containing more poor people. Aggregating to the sublocation level makes it impossible to test this key observable implication.

We also observe that the projects are not spread evenly across the space of each sublocation. In some instances they are bunched right on top of one another (implying that some areas of the sublocation are receiving lots of benefits while other areas are not). In addition, many of the projects are located right on the sublocation boundary—often because sublocation boundaries are defined by roads and because projects are often sited at schools, clinics, or other infrastructure, which tend to be located close to roads. The

implication is that the benefits of many projects are consumed equally by people residing in adjacent sublocations, raising questions about the logic of assigning “credit” for poverty alleviation to just one jurisdiction.

These considerations point to the desirability of investigating the link between poverty and CDF project placement without aggregating project counts and poverty headcounts to the level of artificial administrative units like sublocations. If MPs were only able to target projects to broad sections of their constituency (as they might if they were building a bridge or a new road that served a wide area), then analyzing patterns of project distribution at the sublocation level might make sense. But most CDF projects are small in scale—a dispensary; a cattle dip; a refurbished classroom or a new latrine at a primary school—and provide benefits only for the populations living within a short distance from them. This implies the desirability of undertaking one’s analysis of project placement at the most fine-grained level possible. Furthermore, to the extent that MPs make their decisions about where to place CDF projects in response to information about local poverty rates, this information unfolds in the continuous space of their geographic constituency (and even within and across sub-locations, as illustrated in Fig. 2). Aggregation to higher-level administration units thus hides important and theoretically interesting variation from analysis.

5. A point-level analysis of pro-poor targeting

Our solution to these aggregation problems is to leverage the point-level data we have gathered, treating the distribution of

²⁰ This relates to the well-known modifiable areal unit problem (MAUP), in which continuous spatial phenomena like population density can have different estimated effects when they are aggregated into units of different sizes (Wong, 2009). See Gerell (2017) and Wong, Bowers, Williams, and Simmons (2012) for empirical examinations of MAUP.

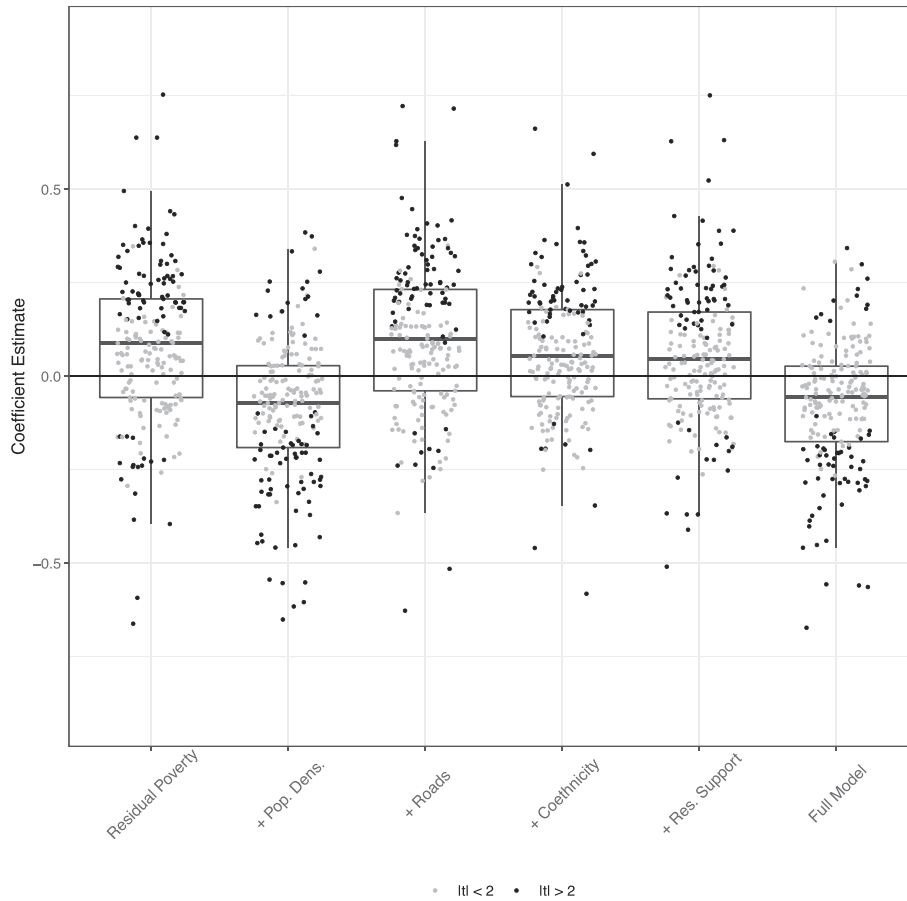


Fig. 3. The impact of local poverty on CDF project placement. Each dot represents a constituency-level coefficient estimate, with coefficients that are statistically different from zero (with a *t*-statistic > 2) plotted in black and those not significantly different from zero plotted in grey. The left-most boxplot shows the bivariate relationship between project placement and (residualized) poverty. The next four present the relationships between project placement and (residualized) poverty, controlling for the listed covariate. The right-most boxplot shows the relationship between the project placement and (residualized) poverty, controlling for all of the covariates added in columns 2–5.

CDF projects as a Poisson point process that varies across space as a function of the local poverty levels and other covariates (Gatrell, Bailey, Diggle, & Rowlingson, 1996; Diggle, 2013).²¹ While point process models have long been used in fields like ecology (e.g. Warton & Shepherd, 2010) and seismology (e.g., Ogata, 1999), such models have only more recently been adopted by social scientists to study topics such as policing (Baudains, Belur, Braithwaite, Marchione, & Johnson, 2019), crime (Mohler, Short, Brantingham, Schoenberg, & Tita, 2011), and political violence (Warren, 2015; Reeder, 2018).

As discussed in Harris and Posner (2019), a complexity that arises from the move to a point-level analysis is that many areas in Kenya are uninhabited, or very nearly so. As in most countries, humans in Kenya tend to cluster in towns, villages, and cities, leaving much of the countryside very sparsely populated. Since CDF projects are unlikely to be placed where there are no people, this skewed population distribution generates a strong mechanical correlation between population density and the number of people living in poverty when measured at the pixel level. To deal with this problem, we regress, in each constituency, (the log of) population

density on the number of people living in poverty, and then use the residuals from these regressions in lieu of our direct measure of local poverty (we do similarly with the other population-based covariates we include in our models as well). This allows us to interpret the estimated spatial association between project placement and the number of people living in poverty as capturing the effect of the part of our local poverty measure that is not due to population density.

5.1. Constituency-level analysis

Fig. 3 presents the results of our point-level analysis of the spatial relationship between poverty rates and CDF project placement. Each boxplot presents the constituency-level estimates for each of the 196 constituencies for which we have data.²² The first column in Fig. 3 presents the bivariate constituency-level relationships between project locations and (residualized) poverty. The second through fifth columns add controls, respectively, for population density, the (square of the) distance to paved roads, the (residualized) number of coethnics living in the area, and the (residualized) number of people living in the area that voted for the MP in the last

²¹ Technical details of the Poisson point process model are provided in Appendix A. For a more thorough discussion of the approach, and an application to the question of whether MPs use CDF funds to favor their political supporters, see Harris and Posner (2019).

²² As noted earlier, these constituency-level estimates are the average of 21 separate regressions, each using a slightly different set of imputed project locations, thus explicitly taking spatial measurement uncertainty into account.

election. The final column presents the association between project placement and (residualized) poverty, conditional on all four of these additional covariates.

The estimates reported in the first column indicate a positive relationship in most constituencies between poverty headcounts and CDF project placement (although the relationship in the median constituency, indicated by the dark horizontal bar in the middle of the boxplot, is not statistically significant at conventional levels). These results are in keeping with those from the bivariate sublocation-level analysis, which also found a positive relationship between poverty and project locations.

Beyond this general finding, the patterns in column 1 suggest significant heterogeneity in the extent to which MPs target the poor with CDF projects. While we find a significant positive association between local poverty and CDF project placement in some constituencies, we find a significant negative association in others. Meanwhile, in a large number of constituencies (indicated by the grey dots), there is no statistically significant relationship at all between the number of people in poverty in an area and the likelihood that the area receives a CDF project.²³

The other columns in Fig. 3 show what happens to the bivariate relationship between poverty and CDF project placement when additional controls are added to the analysis. Although conditioning on (the square of the) distance to paved roads, coethnicity with the MP, and levels of political support in the last election (columns 3–5) does not significantly change the distribution of outcomes vis-a-vis the bivariate relationship depicted in column 1, the addition of a control for population density (column 2) alters the results sufficiently to flip the sign of the relationship between poverty and project placement in the median constituency. This change carries over to the full model (column 6), which reports the results of the analysis that includes all four additional covariates. When we control for population density, distance to roads, coethnicity with the MP, and levels of political support for the MP in the last election together, the relationship between poverty and CDF project placement is negative (although not statistically significant) in the median constituency.

Yet, as with the bivariate results reported in column 1, this finding belies considerable cross-constituency variation. Once we have controlled for these other factors that shape where MPs place projects, many MPs would appear not to use their CDF funds to target the poor—notwithstanding the rhetoric about poverty alleviation that accompanied the launch of the CDF program. However, against this general trend, we do see a significant positive relationship between local poverty headcounts and CDF project placement in a handful of constituencies. What accounts for these differences? Why do MPs seem to adopt pro-poor distribution strategies in their allocation of CDF resources in some constituencies but not others?

5.2. Cross-constituency analysis

To answer these questions, we regress the constituency-level conditional association between project placement and poverty rates (as depicted in the sixth, “full model,” column in Fig. 3) on variables capturing factors that both theory and local knowledge of the Kenyan case suggest may account for the cross-constituency variation we observe in whether MPs target the poor with their CDF funds.

A first variable to consider is the MP's gender. Recent research in Africa finds that both female parliamentarians and women in general attach greater importance to poverty alleviation than their male counterparts (Gottlieb, Grossman, & Robinson, 2018; Clayton, Josefsson,

Mattes, & Mozaffar, 2019). We might therefore expect female MPs to be more likely to use their CDF funds to target the poor.

A second potentially relevant factor is the vote margin in the prior election. Close vote margins imply greater electoral competitiveness, which in turn implies stronger incentives for incumbent MPs to be strategic in how they deploy the resources they control to maximize their chances of re-election. As Bates (1987) notes, “public officials are frequently less concerned with using public resources in a way that is economically efficient than they are with using them in a way that is politically expedient.” What matters, Bates (1987) underscores, is that the resources are used “as an instrument for building a rural political constituency.” To the extent that channeling CDF projects to the poor is at cross purposes with building such a political constituency, and to the extent that building (or maintaining) such a constituency is more likely to be emphasized in more competitive political environments, closer vote margins may be associated with a weaker relationship between poverty and project placement.

A third factor that may shape the extent to which MPs target the poor is the MP's membership in the ruling political coalition. Although CDF resources represent a considerable source of funding for local public goods provision, they are not the only source. Central government ministries also spend millions of dollars a year on roads, schools, health facilities, and other local infrastructure. To the extent that MPs with ties to the ruling coalition have a greater ability to direct how central government funds are deployed within their constituencies, they may be able to use these resources to help secure their re-election, thus freeing up CDF funds for poverty alleviation. This would lead us to expect a closer relationship between poverty headcounts and project placement in constituencies controlled by ruling party MPs. Alternatively, having some control over ministry-based funding could lead ruling party MPs to use those central government resources to target the poor, freeing up CDF funds to win votes. This would imply lower levels of targeting the poor. Or, MPs might use some mixture of these two strategies. As a result, we have no strong expectation about the sign of this coefficient.

A fourth potentially relevant factor is the constituency's ethnic heterogeneity. A significant body of research suggests that public officials in Kenya tend to distribute goods with an eye toward rewarding their coethnics (Barkan & Chege, 1989; Burgess et al., 2015; Kramon & Posner, 2016). To the extent that the expectations underlying such behavior are stronger in ethnically mixed environments, where group comparisons are more relevant (Tajfel & Turner, 1979), we might expect to find a stronger tendency toward ethnic allocations in more ethnically heterogeneous settings. And to the extent that the impetus to channel CDF projects toward one's coethnics conflicts with the impetus to channel projects to the poor, we may expect to find weaker patterns of pro-poor targeting in ethnically heterogeneous constituencies.

An additional set of factors speaks less to politicians' motivations to use their CDF funds to target the poor than to the feasibility of pursuing such a pro-poor strategy. For example, targeting the poor may be especially challenging in the very large constituencies of Northeastern and Coast Provinces, and in the northern parts of Eastern and Rift Valley Provinces, where the poorest constituents tend to live in remote areas that are difficult to reach with CDF projects. It may also be challenging in very urban constituencies, where poverty is much less pronounced and where the poor and the non-poor are interspersed with one another, making it difficult to target the poor without also putting projects in close proximity to those who are better off.²⁴ This latter consideration suggests a

²³ This pattern of heterogeneity in targeting of the poor is similar to that found in Galasso and Ravallion (2005).

²⁴ According to data from Kenya's 2008–09 Demographic and Health Survey (Kenya National Bureau of Statistics & ICF Macro, 2010), 78.5 percent of urban residents are in the highest wealth quintile, compared to just 6 percent of rural residents.

Table 1
What factors are associated with targeting the poor?

	Targeting of projects to poor areas								
	(1)	(2)	(3)	(4)	(5)	(6)	(7)	(8)	(9)
Female MP	-0.11 (0.09)							-0.13 (0.09)	-0.11 (0.08)
Vote margin in last election		0.03 (0.03)						0.03 (0.03)	0.001 (0.02)
Member of ruling coalition			0.05* (0.03)					0.05* (0.03)	0.08*** (0.02)
Ethnic heterogeneity				-0.56 (0.42)				-0.08 (0.44)	-0.35 (0.38)
Constituency area					-0.03* (0.01)			-0.04** (0.02)	-0.10*** (0.02)
Urban						-0.09 (0.07)		-0.19** (0.07)	-0.33*** (0.07)
Segregation of poor							0.09*** (0.02)		0.19*** (0.02)
Observations	196	196	196	196	196	196	196	196	196
R ²	0.03	0.03	0.04	0.04	0.05	0.04	0.11	0.11	0.33
Adjusted R ²	-0.01	-0.01	0.003	-0.01	0.005	-0.01	0.07	0.04	0.28

Note: All models include province fixed effects and are estimated via weighted least squares. *p<0.1; **p<0.05; ***p<0.01.

broader factor that may be relevant outside of urban constituencies as well: whether the poor and the non-poor are spatially segregated from one another.²⁵ Harris and Posner (2019) find that the segregation of a Kenyan MP’s political supporters and opponents matters critically for the MP’s ability to reward his supporters, and Ejdemyr et al. (2018) find similarly with respect to the ability of Malawian MPs to favor their coethnics. It stands to reason that an analogous logic may apply for politicians seeking to channel CDF projects to the poor.

We test for the salience of these seven factors in explaining whether MPs target the poor with their CDF funds. We present bivariate and multivariate models using weighted least squares to account for the fact that our outcome variable is an estimated coefficient with a standard error (Lewis & Linzer, 2005), and we divide all continuous covariates by two standard deviations to facilitate direct comparison with dichotomous covariates (Gelman, 2008).²⁶ Our results are presented in Table 1.

Notwithstanding the strong evidence that women are more concerned with poverty alleviation than men, we find no statistically significant impact of an MP’s gender on pro-poor targeting. If anything, we find some evidence that constituencies with female MPs have weaker associations between poverty and CDF project locations. We caution, however, that this result is driven by a very small number of female MPs in our sample—just six—so we hesitate to read too much into this finding.

We also find no evidence that the vote margin in the last election affects whether MPs use the CDF resources they control to target the poor. This null result may stem from the fact that Kenyan MPs are rarely secure in their re-election likelihoods -- even those who are elected by large margins. While political parties are very adept at retaining the seats they have won in past elections, the candidates who occupy those seats tend to change from contest

²⁵ We measure segregation using the spatial information theory index described in Reardon and O’Sullivan (2004).

²⁶ An alternative specification using ordinary least squares is presented in Appendix B, Table B1.

to contest, largely because parties decline to renominate incumbent MPs more than 60 percent of the time (Choi, 2020). This implies that, in the Kenyan setting, the margin of victory may not, in fact, be a good proxy for whether or not a seat is “safe” from the point of view of the incumbent, and thus not a strong predictor of the MP’s behavior while in office. Almost all Kenyan MPs need to be thinking about their re-election and, as Choi (2020) suggests, this may have more to do with winning the support of the party that controls the re-nomination process than with winning the support of voters through poverty alleviation or other strategies.

We do find robust evidence that membership in the ruling coalition matters. MPs who are affiliated with the ruling party are significantly more likely to favor the poor in their allocation of CDF projects. This pattern is consistent with a strategy of prioritizing re-election over helping the poor. Ruling party MPs, who have influence over the distribution of central government ministry funds by virtue of their membership in the governing coalition, use these ministry resources to reward their political allies, leaving their CDF funds available for targeting the poor. MPs outside of the ruling coalition, who lack access to these alternative development resources, use their CDF funds for strategic political ends, and thus neglect the poor in their distribution strategies. We find no evidence, however, that MPs operating in more ethnically heterogeneous constituencies behave any differently from their counterparts in more homogeneous constituencies with respect to targeting the poor with CDF funds.

The last three factors we investigate—whether the constituency is large or urban and whether the poor are spatially segregated from the non-poor—are all statistically significant in the multivariate models, suggesting that the *feasibility* of targeting the poor may matter more than whether the MP is motivated to try. We find that CDF projects are much less likely to be targeted toward the poor in large constituencies, likely because of the challenges in targeting anyone in constituencies that are vast and sparsely settled, combined with the special challenges of targeting the poor, who tend to live in remote locations. We also find that CDF projects are more likely to be targeted toward the poor in rural than in urban con-

stituencies, largely because, as suggested earlier, it is challenging to separate the poor from the non-poor in densely packed urban settings where variation in poverty rates is quite narrow.

We also find that constituencies in which the poor are segregated from the non-poor are significantly more likely to have positive associations between poverty and CDF project placement. As indicated by the sevenfold increase in the adjusted R-squared when we add the *segregation of poor* variable to our analysis, the spatial segregation of the poor matters a lot. The implication, which echoes the findings in Harris and Posner (2019) and Ejdemyr et al. (2018), is that analyses that fail to include such spatial variables may generate incomplete, and possibly misleading, conclusions about how politics operates.

6. Conclusion

The spatial patterns explored in our analyses speak to the degree to which Kenyan politicians have taken advantage of the decentralized power they were given over the distribution of CDF resources to target the poorest areas of their constituencies. As noted, this is not quite the same thing as testing whether decentralization leads to poverty alleviation, as targeting the poor with CDF projects may or may not lead to reductions in poverty.²⁷ Our finding that MPs generally do not use this discretion to target the poor is in keeping both with the empirical literature on decentralization and poverty reduction (see Mansuri & Rao (2013) for a summary) and with the broader literature on the motivations of political actors in settings like Kenya (e.g., Bates, 1981). What is more novel is our demonstration of the extent to which MPs' poverty targeting behavior is fundamentally constrained by human geography.

Most of the literature on distributive politics emphasizes the *motivations* of politicians to target one constituency rather than another. Our results underscore the importance of also examining the extent to which politicians have the *opportunity* to target particular constituencies—and the degree to which the distribution of people in space fundamentally shapes this opportunity. Our analyses suggest that the poor are underserved by CDF funding not just because politicians lack incentives to target them but because the poor are challenging to reach.²⁸

Our research underscores the power of highly disaggregated, point-level data to generate important insights about distributive politics. We nonetheless acknowledge the limitations of making inferences about complex processes on the ground based on associations in data collected remotely in an observational study—even when using detailed, comprehensive data like our own. For example, an alternative explanation for our finding of a weak relationship between local poverty rates and CDF project placement is that the poor are unable to mobilize to demand that projects be located in their areas (Baird, McIntosh, & Özler, 2013).²⁹ To the extent that this alternative explanation holds, the lack of evidence for pro-poor targeting of CDF funds by MPs stems from demand—rather than supply-side forces.³⁰ Detailed case study research into this, and other, hypotheses would complement our quantitative analyses and deepen our understanding of the links between poverty and CDF resource distribution.

²⁷ Indeed, placing a project in a particular location may not even guarantee that the project is completed, as Williams (2017) demonstrates in Ghana.

²⁸ Briggs (2021) makes a similar point with respect to the targeting of World Bank project aid.

²⁹ While CDF allocation decisions are made by the MP and his CDF committee, community members may also, and frequently do, apply for projects.

³⁰ We note that such an explanation runs counter to the assumption in the decentralization literature that local political actors should know where the poorest are located, even without being told so by them.

Our findings are also potentially limited by our measure of poverty as a count of people living below the poverty line rather than as a rate or depth of poverty in a given location. Insofar as our interest is in learning whether MPs are prioritizing poverty reduction in their constituencies, and insofar as the anti-poverty tool we are studying (CDF funds, which underwrite the provision of local public goods) will have the greatest impact when projects are located in close proximity to the greatest number of poor people, our approach is sensible. However, we cannot rule out that MPs, while not putting CDF projects in places with large numbers of poor people, are nonetheless channeling projects to places where poverty rates are highest or where the poorest of the poor reside. As with the above limitation, deeper qualitative case studies aimed at understanding the complex objectives of politicians may better elucidate whether and how MPs understand the goal of poverty alleviation.³¹

CRediT authorship contribution statement

J. Andrew Harris: Conceptualization, Methodology, Software, Formal analysis. **Daniel N. Posner:** Conceptualization, Methodology, Formal analysis.

Declaration of Competing Interest

The authors declare that they have no known competing financial interests or personal relationships that could have appeared to influence the work reported in this paper.

Acknowledgement

Prepared for a symposium in honor of Robert Bates, Harvard University, 2–3 October 2020. The authors thank Ryan Briggs, Carl Muller-Crepon, Alberto Diaz-Cayeros, seminar participants at UCSB and Oxford, and two anonymous reviewers for helpful comments.

References

- Harris, J. A., & Posner, D. N. (2019). (Under what conditions) do politicians reward their supporters? Evidence from Kenya's Constituencies Development Fund. *American Political Science Review*, 113(1), 123–139.
- Government of Kenya (2003). *The Constituency Development Fund Act, 2003*. Nairobi: Government Printer.
- Bardhan, P. (2002). Decentralization of governance and development. *Journal of Economic Perspectives*, 16(4), 185–205.
- Treisman, D. S. (2007). *The architecture of government: Rethinking political decentralization*. New York: Cambridge University Press.
- Mansuri, G., & Rao, V. (2013). *Localizing development: Does participation work?* Washington, DC: The World Bank.
- Faguet, J.-P. (2014). Decentralization and governance. *World Development*, 53, 2–13.
- Crook, R. C. (2003). Decentralisation and poverty reduction in Africa: The politics of local-central relations. *Public Administration and Development*, 23, 77–88.
- Galasso, E., & Ravallion, M. (2005). Decentralized targeting of an antipoverty program. *Journal of Public Economics*, 89, 705–727.
- Hoffmann, V., Jakiela, P., Kremer, M., Sheely, R., & Goodkin-Gold, M. (2017) There is no place like home: Theory and evidence on decentralization and politician preferences, unpublished paper.
- Keefer, P., & Khemani, S. (2009). When do legislators pass on pork? The role of political parties in determining legislator effort. *American Political Science Review*, 103(1), 99–112.
- Baskin, M., & Mezey, M. L. (2014). *Distributive politics in developing countries: Almost pork*. Lanham, MD: Lexington Books.
- Malik, R. (2019). (A) Political constituency development funds: Evidence from Pakistan. *British Journal of Political Science*, 51(3), 963–980.

³¹ Our focus on targeting also subsumes several decisions leading to the final observed set of projects that we model in this paper. How many projects should be created? What kind of project should be implemented? Where should the project be placed? And who should build it? Each of these questions merits attention. In addition, future work might examine spatial constraints and spatial dependence that shape patterns of project placement. For instance, inter-point interactions may emerge if an MP decides not to place a project at place u in time t , given that a project was placed in the vicinity at time $t - 1$.

- Kimenyi, M.S. (2005). Efficiency and efficacy of Kenya's Constituency Development Fund: Theory and evidence, working paper.
- Bagaka, J. O. (2009). *Fiscal decentralization in Kenya and the growth of government: The Constituency Development Fund*. Northern Illinois University, Ph.D. thesis.
- Nyamori, R. O. (2009). Making development accountable: a critical analysis of the systems of accounting and accountability for the Constituency Development Fund in Kenya. *Journal of Accounting and Organizational Change*, 5(2), 197–227.
- Nyaguthii, E., & Oyugi, L. (2013). Influence of community participation on successful implementation of constituency development fund projects in Kenya: case study of Mwea Constituency. *International Journal of Education and Research*, 1(8), 1–16.
- Ndii, D. (2014). Money for small things: Experience and lessons of Kenya's Constituency Development Fund. In M. Baskin & M. L. Mezey (Eds.), *Distributive politics in developing countries: Almost pork* (pp. 49–82). Lanham, MD: Lexington Books.
- Ngacho, C., & Das, D. (2014). A performance evaluation framework of development projects: An empirical study of Constituency Development Fund (CDF) construction projects in Kenya. *International Journal of Project Management*, 32, 492–507.
- Harris, K.A. (2017). *Patronage in development: Ethnicity and the politics of public goods provision in Kenya* (Ph.D. thesis), Indiana University.
- Alderman, H. (2002). Do local officials know something we don't? Decentralization of targeted transfers in Albania. *Journal of Public Economics*, 83(3), 375–404.
- Bardhan, P., & Mookherjee, D. (2005). Decentralizing antipoverty program delivery in developing countries. *Journal of Public Economics*, 89(4), 675–704.
- Bardhan, P., & Mookherjee, D. (2006). Pro-poor targeting and accountability of local governments in West Bengal. *Journal of Development Economics*, 79, 303–327.
- Alatas, V., Banerjee, A., Hanna, R., Olken, B. A., & Tobias, J. (2012). Targeting the poor: Evidence from a field experiment in Indonesia. *American Economic Review*, 102(4), 1206–1240.
- Carlitz, R. D. (2017). Money flows, water trickles: Understanding patterns of decentralized water provision in Tanzania. *World Development*, 93, 16–30.
- Basurto, M.P., Dupas, P. & Robinson, J. (2020). Decentralization and efficacy of subsidy targeting: Evidence from chiefs in rural Malawi, *Journal of Public Economics* 185.
- Briggs, R. C. (2014). Aiding and abetting: Project aid and ethnic politics in Kenya. *World Development*, 64, 194–205.
- Jablonski, R. (2014). How aid targets votes: The effect of electoral strategies on the distribution of foreign aid. *World Politics*, 66(2), 293–330.
- Öhler, H., & Nunnenkamp, P., (2014). Needs-based targeting or favoritism? The regional allocation of multilateral aid within recipient countries, *Kyklos* 67 (3).
- Nunnenkamp, P., Sotirova, A., & Thiele, R. (2016). Do aid donors specialize and coordinate with recipient countries? The case of Malawi. *Development Policy Review*, 34(6), 831–849.
- Briggs, R. C. (2017). Does foreign aid target the poorest? *International Organization*, 71(1), 187–206.
- Öhler, H., Negre, M., Smets, L., Massari, R., Bogetic, Z. (2019). Putting your money where your mouth is: Geographic targeting of world bank projects to the bottom 40 percent, *PLoS one* 14 (6).
- Dipendra, K. (2020). Which aid targets poor at the sub-national level? *World Development Perspectives*, 17(100177), 1–11.
- Wayoro, D., & Ndikumana, L. (2020). *Impact of development aid on infant mortality: Micro-level evidence from Cote d'Ivoire*, *aidData Working Paper*, No. 94.
- Chhibber, P. & Jensenius, F.R. (2016). Privileging one's own? Voting patterns and politicized spending in India, unpublished manuscript.
- Briggs, R. C. (2018). Leaving no one behind? A new test of subnational aid targeting. *Journal of International Development*, 30, 904–910.
- Briggs, R. C. (2018). Poor targeting: A gridded spatial analysis of the degree to which aid reaches the poor in Africa. *World Development*, 103, 133–148.
- Ejdemyr, S., Kramon, E., & Robinson, A. L. (2018). Segregation, ethnic favoritism, and the strategic targeting of local public goods. *Comparative Political Studies*, 51(9), 1111–1143.
- Murray, G. (2020). *Criminal politicians and community investment: Evidence from India*, Ph.D. thesis, University of California, Los Angeles.
- Brierley, S. (2021). *Manipulating leviathan: Development, corruption and bureaucratic co-optation in Ghana*, unpublished manuscript.
- Enos, R. D. (2017). *The space between us: Social geography and politics*. Cambridge University Press.
- Jusko, K. L. (2017). *Who speaks for the poor?: Electoral geography, party entry, and representation*. New York: Cambridge University Press.
- Rickard, S. J. (2018). *Spending to win: Political institutions, economic geography, and government subsidies*. New York: Cambridge University Press.
- Rodden, J. A. (2019). *Why cities lose: The deep roots of the urban-rural political divide*. New York: Basic Books.
- Hornsby, C. (2013). *Kenya: A history since independence*. London: IB Tauris.
- Ongoya, Z., & Lumallas, E. (2005). A Critical Appraisal of the Constituency Development Fund Act, Unpublished manuscript.
- King, G., Honaker, J., Joseph, A., & Scheve, K. (2001). Analyzing incomplete political science data: An alternative algorithm for multiple imputation. *American Political Science Review*, 95(1), 49–69.
- Tatem, A., Gething, P., Pezzulo, C., Weiss, D., & Bhatt, S. (2015). Development of pilot high-resolution gridded poverty surfaces, University of Southampton/Oxford.
- Alkire, S., & Santos, M. E. (2014). Measuring acute poverty in the developing world: Robustness and scope of the multidimensional poverty index. *World Development*, 59, 251–274.
- Linard, C., Gilbert, M., Snow, R.W., Noor, A.M., Tatem, A.J., 2010. Population distribution, settlement patterns and accessibility across Africa in 2010, *PLoS one* 7 (2).
- Lee, K., Brewer, E., Christiano, C., Meyo, F., Miguel, E., Podolsky, M., Rosa, J., & Wolfram, C. (2016). Electrification for 'under grid' households in rural Kenya. *Development Engineering*, 26–35.
- Bruederle, A., & Hodler, R. (2018). Nighttime lights as a proxy for human development at the local level. *PLOS ONE*, 13(9) e0202231.
- Andersson, M., Hall, O., & Archila, M. F. (2019). How data-poor countries remain data poor: Underestimation of human settlements in Burkina Faso as observed from nighttime light data. *ISPRS International Journal of Geo-Information*, 8(11), 498.
- Maatta, I., & Lessmann, C. (2019). Human lights. *Remote Sensing*, 11(19), 2194.
- Government of Kenya (2006). *Classified roads and market town datasets*. Nairobi: Ministry of Roads.
- Brass, J. (2012). Why do NGOs go where they go? Evidence from Kenya. *World Development*, 40(2), 387–401.
- Briggs, R.C. (2021). Why does aid not target the poorest?, *International Studies Quarterly*.
- Harris, J. A. (2015). What's in a name? A method for extracting information about ethnicity from names. *Political Analysis*, 23(2), 212–224.
- Weinstein, L. (2011). The politics of government expenditures in Tanzania, 1999–2007. *African Studies Review*, 54(1), 33–57.
- Burgess, R., Jedwab, R., Miguel, E., Morjaria, A., & i Miquel, G. P. (2015). The value of democracy: Evidence from road building in Kenya. *American Economic Review*, 105(6), 1817–1851.
- Masaki, T. (2018). The political economy of aid allocation in Africa: Evidence from Zambia. *African Studies Review*, 61(1), 55–82.
- Wong, D. W. (2009). The modifiable areal unit problem (MAUP). In *The SAGE handbook of political analysis* (pp. 105–123). Los Angeles: SAGE Publications.
- Gerell, M. (2017). Smallest is better? The spatial distribution of arson and the modifiable areal unit problem. *Journal of Quantitative Criminology*, 33(2), 293–318.
- Wong, C., Bowers, J., Williams, T., & Simmons, K.D. (2012). Bringing the person back. In: *Boundaries, perceptions, and the measurement of racial context*, *Journal of Politics* 74 (4) 1153–1170.
- Gatrell, A. C., Bailey, T. C., Diggle, P. J., & Rowlingson, B. S. (1996). Spatial point pattern analysis and its application in geographical epidemiology. *Transactions of the Institute of British Geographers*, 21(1), 256–274.
- Diggle, P. J. (2013). *Statistical analysis of spatial and spatio-temporal point patterns*. Boca Raton, FL: CRC Press.
- Warton, D. I., & Shepherd, L. C. (2010). Poisson point process models solve the pseudo-absence problem for presence-only data in ecology. *The Annals of Applied Statistics*, 4(3), 1383–1402.
- Ogata, Y. (1999). *Seismicity analysis through point-process modeling: A review* (pp. 471–507). Birkhäuser Basel: Basel.
- Baudains, P., Belur, J., Braithwaite, A., Marchione, E., & Johnson, S. D. (2019). The exacerbating effect of police presence: A multivariate point process analysis of the naxal conflict. *Political Geography*, 68, 12–22. URL: <http://www.sciencedirect.com/science/article/pii/S0962629817302226>.
- Mohler, G. O., Short, M. B., Brantingham, P. J., Schoenberg, F. P., & Tita, G. E. (2011). Self-exciting point process modeling of crime. *Journal of the American Statistical Association*, 106(493), 100–108.
- Warren, T. C. (2015). Explosive connections? Mass media, social media, and the geography of collective violence in African states. *Journal of Peace Research*, 52(3), 297–311.
- Reeder, B. W. (2018). The political geography of rebellion: Using event data to identify insurgent territory, preferences, and relocation patterns. *International Studies Quarterly*, 62(3), 696–707.
- Gottlieb, J., Grossman, G., & Robinson, A. L. (2018). Do men and women have different policy preferences in Africa? Determinants and implications of gender gaps in policy prioritization. *British Journal of Political Science*, 48(3), 611–636.
- Clayton, A., Josefsson, C., Mattes, R., & Mozaffar, S. (2019). In whose interest? Gender and mass-elite priority congruence in Sub-Saharan Africa. *Comparative Political Studies*, 52(1), 69–101.
- Bates, R. H. (1987). *Essays on the political economy of rural Africa*. Berkeley and Los Angeles: University of California Press.
- Barkan, J. D., & Chege, M. (1989). Decentralizing the state: District focus and the politics of reallocation in Kenya. *Journal of Modern African Studies*, 27(3), 431–443.
- Kramon, E., & Posner, D. N. (2016). Ethnic favoritism in education in Kenya. *Quarterly Journal of Political Science*, 11(1), 1–58.
- Tajfel, H., & Turner, J. C. (1979). An integrative theory of intergroup conflict. In W. Austin & S. Worchel (Eds.), *The social psychology of intergroup relations*. Monterey, CA: Brooks Cole.
- Kenya National Bureau of Statistics and ICF Macro (2010). *Kenya demographic and health survey, 2008–09*. Calverton, MD: Kenya National Bureau of Statistics and ICF Macro.
- Reardon, S. F., & O'Sullivan, D. (2004). Measures of spatial segregation. *Sociological Methodology*, 34(1), 121–162.

- Lewis, J. B., & Linzer, D. A. (2005). Estimating regression models in which the dependent variable is based on estimates. *Political Analysis*, 13(4), 345–364.
- Gelman, A. (2008). Scaling regression inputs by dividing by two standard deviations. *Statistics in Medicine*, 27(15), 2865–2873.
- Choi, D.D., 2020. Severed connections: Intraparty politics and representation in democratic Africa, Unpublished book manuscript.
- Williams, M. J. (2017). The political economy of unfinished development projects: Corruption, clientelism, or collective choice? *American Political Science Review*, 111(4), 705–723.
- Bates, R. H. (1981). *Markets and states in tropical Africa: The political basis of agricultural policies*. Berkeley and Los Angeles: University of California Press.
- Baird, S., McIntosh, C., & Özler, B. (2013). The regressive demands of demand-driven. *Journal of Public Economics*, 106, 27–41.