

# UCSF

## UC San Francisco Previously Published Works

### Title

Phacolytic Glaucoma in an Adult with Stickler Syndrome

### Permalink

<https://escholarship.org/uc/item/66z8d1p1>

### Journal

Ophthalmology Glaucoma, 5(4)

### ISSN

2589-4234

### Authors

Stallworth, Jeannette Y  
Schallhorn, Julie M  
Oatts, Julius T

### Publication Date

2022-07-01

### DOI

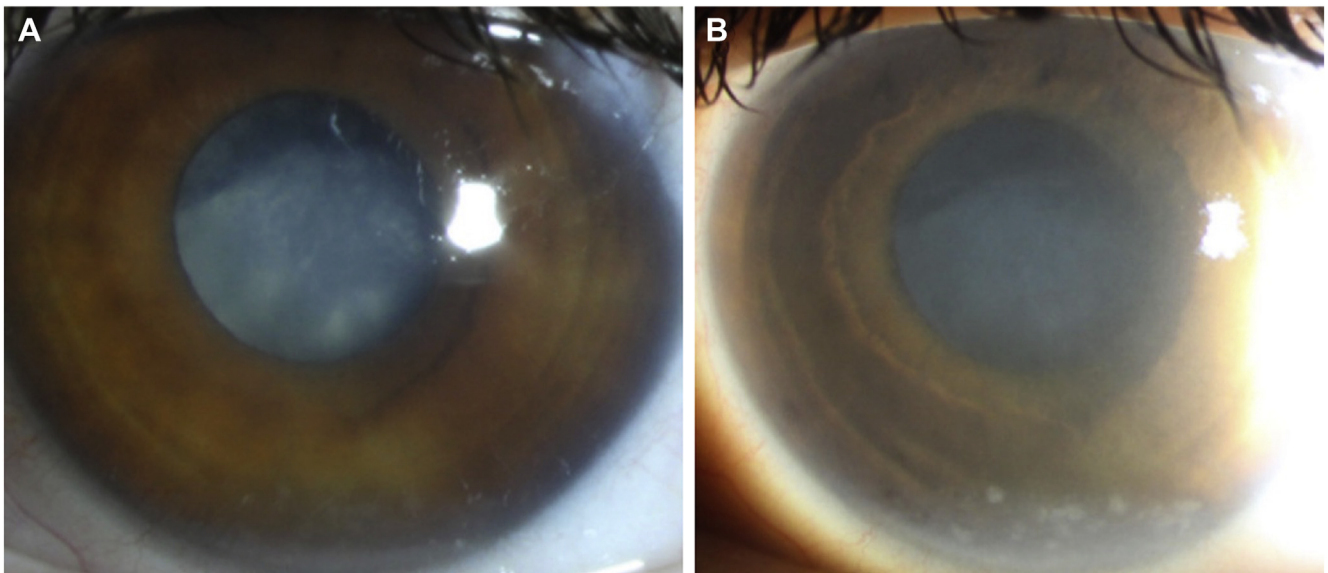
10.1016/j.ogla.2022.04.001

Peer reviewed

23. Maumenee AE. The pathogenesis of congenital glaucoma: a new theory. *Trans Am Ophth Soc.* 1958;56:507.
24. Dandona L, Williams JD, Williams BC, Rao GN. Population-based assessment of childhood blindness in southern India. *Arch Ophthalmol.* 1998;116:545–546.
25. Deluise VP, Cobo M, Chandler D. Persistent corneal edema in the congenital rubella syndrome. *Ophthalmology.* 1983;90:835–839.
26. Rudolph AJ, Desmond MM. Clinical manifestations of the congenital rubella syndrome. *Int Ophthalmol Clin.* 1972;12:3–19.
27. Shaffer RN. Prognosis of goniotomy in primary infantile glaucoma (trabeculodysgenesis). *Trans Am Ophthalmol Soc.* 1982;80:321–325.
28. Frij BJ, South MA, Sever JL. Maternal rubella and the congenital rubella syndrome. *Clin Perinatol.* 1988;15:247–257.
29. Colfis WJ, Cohen DN. Rubella retinopathy: a progressive disorder. *Arch Ophthalmol.* 1970;84:33–35.

## Pictures & Perspectives

---



### Phacolytic Glaucoma in an Adult with Stickler Syndrome

A 37-year-old woman with Stickler syndrome presented with pain in the left eye, blurry vision, and nausea. An examination revealed a visual acuity of 20/800, an intraocular pressure of 42 mmHg, and an open angle on gonioscopy. Diffuse, microcystic corneal edema was present, along with numerous fluffy white particles in a deep anterior chamber. Layered cellular debris was visible in the inferior anterior chamber, consistent with a pseudohypopyon, demonstrated without (A) and with (B) slit beam illumination. A mature cataract with an intact anterior lens capsule was seen. A diagnosis of phacolytic glaucoma, an unusual manifestation of Stickler syndrome, was made, and the patient underwent urgent cataract extraction (Magnified version of Fig A-B is available online at [www.ophtalmologyglaucoma.org](http://www.ophtalmologyglaucoma.org)).

JEANNETTE Y. STALLWORTH, MD

JULIE M. SCHALLHORN, MD

JULIUS T. OATTS, MD

Department of Ophthalmology, University of California San Francisco, San Francisco, California

---