

UCSF

UC San Francisco Previously Published Works

Title

The 2021 WHO Classification of Tumors of the Central Nervous System: a summary

Permalink

<https://escholarship.org/uc/item/6719f3wv>

Journal

Neuro-Oncology, 23(8)

ISSN

1522-8517

Authors

Louis, David N
Perry, Arie
Wesseling, Pieter
et al.

Publication Date

2021-08-02

DOI

10.1093/neuonc/noab106

Peer reviewed

The 2021 WHO Classification of Tumors of the Central Nervous System: a summary

David N. Louis, Arie Perry, Pieter Wesseling^o, Daniel J. Brat^o, Ian A. Cree, Dominique Figarella-Branger, Cynthia Hawkins, H. K. Ng, Stefan M. Pfister, Guido Reifenberger, Riccardo Soffietti, Andreas von Deimling, and David W. Ellison

Department of Pathology, Massachusetts General Hospital and Harvard Medical School, Boston, Massachusetts, USA (D.N.L.); Department of Pathology, University of California San Francisco, San Francisco, California, USA (A.P.); Department of Pathology, Amsterdam University Medical Centers/VUmc, Amsterdam, the Netherlands (P.W.); Laboratory for Childhood Cancer Pathology, Princess Máxima Center for Pediatric Oncology, Utrecht, the Netherlands (P.W.); Department of Pathology, Northwestern University Feinberg School of Medicine, Chicago, Illinois, USA (D.J.B.); International Agency for Research on Cancer, World Health Organization, Lyon, France (I.A.C.); Service d'Anatomie Pathologique et de Neuropathologie, APHM, CNRS, Institut de Neurophysiopathologie, Hôpital de la Timone, Aix-Marseille University, Marseille, France (D.F.B.); Department of Paediatric Laboratory Medicine, The Hospital for Sick Children, University of Toronto, Toronto, ON, Canada (C.H.); Department of Anatomical and Cellular Pathology, Chinese University of Hong Kong, Hong Kong, China (H.K.N.); Hopp Children's Cancer Center at the NCT Heidelberg (KiTZ), Division of Pediatric Neurooncology, German Cancer Consortium (DKTK) and German Cancer Research Center (DKFZ), and Department of Pediatric Oncology, Hematology and Immunology, Heidelberg University Hospital, Heidelberg, Germany (S.M.P.); Institute of Neuropathology, University Hospital Düsseldorf and Medical Faculty, Heinrich Heine University Düsseldorf, and German Cancer Consortium (DKTK) Partner Site Essen/Düsseldorf, Düsseldorf, Germany (G.R.); Department of Neurology and Neuro-Oncology, University of Turin Medical School, Turin, Italy (R.S.); Department of Neuropathology, Institute of Pathology, Ruprecht-Karls-University, Heidelberg, Germany (A.v.D.); Clinical Cooperation Unit Neuropathology, German Cancer Research Center (DKFZ), and German Cancer Consortium (DKTK), Heidelberg, Germany (A.v.D.); Department of Pathology, St. Jude Children's Research Hospital, Memphis, Tennessee, USA (D.W.E.)

Corresponding Author: David N. Louis, MD, James Homer Wright Pathology Laboratories, Massachusetts General Hospital, 55 Fruit Street, Warren 225, Boston, MA 02114, USA (dlouis@mgh.harvard.edu).

Abstract

The fifth edition of the WHO Classification of Tumors of the Central Nervous System (CNS), published in 2021, is the sixth version of the international standard for the classification of brain and spinal cord tumors. Building on the 2016 updated fourth edition and the work of the Consortium to Inform Molecular and Practical Approaches to CNS Tumor Taxonomy, the 2021 fifth edition introduces major changes that advance the role of molecular diagnostics in CNS tumor classification. At the same time, it remains wedded to other established approaches to tumor diagnosis such as histology and immunohistochemistry. In doing so, the fifth edition establishes some different approaches to both CNS tumor nomenclature and grading and it emphasizes the importance of integrated diagnoses and layered reports. New tumor types and subtypes are introduced, some based on novel diagnostic technologies such as DNA methylome profiling. The present review summarizes the major general changes in the 2021 fifth edition classification and the specific changes in each taxonomic category. It is hoped that this summary provides an overview to facilitate more in-depth exploration of the entire fifth edition of the WHO Classification of Tumors of the Central Nervous System.

Key words

brain tumor | central nervous system | classification | diagnosis | World Health Organization

The fifth edition of the WHO Classification of Tumors of the Central Nervous System (WHO CNS5)¹ is the sixth version of the international standard for the classification of brain and spinal cord tumors, following the prior publications from 1979, 1993, 2000, 2007, and 2016.²⁻⁶ WHO CNS5 builds on the updated fourth edition that appeared in 2016, on the many developments in the field that followed the 2016 classification, and on the recommendations of the Consortium to Inform Molecular and Practical Approaches to CNS Tumor Taxonomy (cIMPACT-NOW).⁷⁻¹⁶ WHO CNS5 features substantial changes by moving further to advance the role of molecular diagnostics in CNS tumor classification but remaining rooted in other established approaches to tumor characterization, including histology and immunohistochemistry. WHO CNS5 is presented in [Table 1](#), and the major general and specific changes are summarized in this review.

General Changes

CNS Tumor Taxonomy

CNS tumor classification has long been based on histological findings supported by ancillary tissue-based tests (eg, immunohistochemical, ultrastructural). More recently, molecular biomarkers have gained importance in providing both ancillary and defining diagnostic information. WHO CNS5 therefore incorporates numerous molecular changes with clinicopathologic utility that are important for the most accurate classification of CNS neoplasms. [Table 2](#) catalogs the key genes and proteins that are analyzed for diagnostic alterations important for integrated CNS tumor classification. WHO CNS5 does not recommend specific methods for molecular assessment of the individual diagnostic alterations unless a certain method is unequivocally required for the diagnosis of a distinct tumor type or subtype (see below).

As the use of molecular biomarkers in brain and spinal cord tumor diagnosis has been further elucidated, challenges have arisen in how to organize the classification of tumor types. Some are readily and consistently characterized by defining molecular features; for some, molecular parameters are not required but may support their classification; yet others are rarely or never diagnosed using molecular approaches. The resulting nosological organization is therefore also mixed. For some tumor families, WHO CNS5 has grouped tumors according to the genetic changes that enable a complete diagnosis (eg, IDH and H3 status); by looser oncogenic associations, such as MAPK pathway alterations; by histological and histogenetic similarities even though molecular signatures vary (eg, see neoplasms listed under *Other Gliomas*, *Glioneuronal Tumors*, and *Neuronal Tumors*); or, for many, by using molecular features to define new types and subtypes (eg, medulloblastoma). This hybrid taxonomy represents the current state of the field but is likely only an intermediate stage to an even more precise future classification. Examples of such transitional states include tumor families, such as *Pediatric-type diffuse low-grade gliomas*, in which some tumor types encompass several subtypes with a shared molecular feature while other types are precisely defined by a single feature, with such consensus decisions

being based on the state of the field at the time of final editorial discussions.

To standardize WHO CNS5 with other fifth-edition Blue Books, the term “type” is used instead of “entity” and “subtype” is used instead of “variant.” Only types are listed in the classification ([Table 1](#)), with subtypes listed in the Subtype(s) subsections and described under Histopathology and/or Diagnostic Molecular Pathology of individual sections. For example, as a result of this change and because grading is being applied within types (see below), *Meningioma* is a single type with only one entry in the classification, but with many histological subtypes and grades further described in the text.

CNS Tumor Nomenclature

For CNS tumor nomenclature, WHO CNS5 follows the recommendations of the 2019 cIMPACT-NOW Utrecht meeting to make nomenclature more consistent and simple.¹⁴ In the past, some tumor names had anatomic site modifiers (eg, *Chordoid glioma of the third ventricle*) whereas others did not, despite occurring in specific locations (eg, *Medulloblastoma*). Some included genetic modifiers (eg, *Glioblastoma, IDH-wildtype*), whereas others did not, despite having specific genotypes (eg, *Atypical teratoid/rhabdoid tumor [AT/RT]*). Names have therefore been simplified as much as possible, and only location, age, or genetic modifiers with clinical utility have been used (eg, *Extraventricular neurocytoma* vs *Central neurocytoma*). Importantly, for tumors with highly characteristic features (eg, that chordoid gliomas occur in the third ventricle), these are included in tumor definitions and descriptions, even if they are not part of a tumor name. In addition, tumor names sometimes reflect morphologic features that are not prominent in all examples of the type; for example, some myxopapillary ependymomas are minimally myxoid, and some may not be overtly papillary. Similarly, xanthomatous change may be limited to a small fraction of cells in pleomorphic xanthoastrocytomas. Nonetheless, such names represent characteristic, if not universal, features. The terms may also reflect historical associations that have become embedded in common usage; for instance, although a medulloblast has not been identified in developmental studies, the term medulloblastoma is deeply ingrained in tumor terminology, and changing the name could be quite disruptive to clinical care and scientific experiments that rely on prior data, as well as epidemiological studies. Lastly, with the change to grading *within tumor* type (see below), modifier terms like “anaplastic” are not routinely included; familiar names like “anaplastic astrocytoma” and “anaplastic oligodendroglioma” do not, therefore, appear in this classification.

Gene and Protein Nomenclature for CNS Tumor Classification

The fifth edition of the WHO Classification of Tumours uses the HUGO Gene Nomenclature Committee (HGNC) system for gene symbols and gene names (<https://www.genenames.org/>),¹⁷ the Human Genome Variation Society (HGVS) recommendations for sequence variants (

Table 1 2021 WHO Classification of Tumors of the Central Nervous System. Provisional Entities are in Italics

World Health Organization Classification of Tumors of the Central Nervous System, fifth edition

Gliomas, glioneuronal tumors, and neuronal tumors

Adult-type diffuse gliomas

Astrocytoma, IDH-mutant

Oligodendroglioma, IDH-mutant, and 1p/19q-codeleted

Glioblastoma, IDH-wildtype

Pediatric-type diffuse low-grade gliomas

Diffuse astrocytoma, *MYB*- or *MYBL1*-altered

Angiocentric glioma

Polymorphous low-grade neuroepithelial tumor of the young

Diffuse low-grade glioma, MAPK pathway-altered

Pediatric-type diffuse high-grade gliomas

Diffuse midline glioma, H3 K27-altered

Diffuse hemispheric glioma, H3 G34-mutant

Diffuse pediatric-type high-grade glioma, H3-wildtype and IDH-wildtype

Infant-type hemispheric glioma

Circumscribed astrocytic gliomas

Pilocytic astrocytoma

High-grade astrocytoma with piloid features

Pleomorphic xanthoastrocytoma

Subependymal giant cell astrocytoma

Chordoid glioma

Astroblastoma, *MN1*-altered

Glioneuronal and neuronal tumors

Ganglioglioma

Desmoplastic infantile ganglioglioma / desmoplastic infantile astrocytoma

Dysembryoplastic neuroepithelial tumor

Diffuse glioneuronal tumor with oligodendroglioma-like features and nuclear clusters

Papillary glioneuronal tumor

Rosette-forming glioneuronal tumor

Myxoid glioneuronal tumor

Diffuse leptomeningeal glioneuronal tumor

Gangliocytoma

Multinodular and vacuolating neuronal tumor

Dysplastic cerebellar gangliocytoma (Lhermitte-Duclos disease)

Central neurocytoma

Extraventricular neurocytoma

Cerebellar liponeurocytoma

Ependymal tumors

Supratentorial ependymoma

Supratentorial ependymoma, *ZFTA* fusion-positiveSupratentorial ependymoma, *YAP1* fusion-positive

Posterior fossa ependymoma

Posterior fossa ependymoma, group PFA

Posterior fossa ependymoma, group PFB

Spinal ependymoma

Spinal ependymoma, *MYCN*-amplified

Myxopapillary ependymoma

Subependymoma

Table 1 Continued

World Health Organization Classification of Tumors of the Central Nervous System, fifth edition

Choroid plexus tumors

Choroid plexus papilloma

Atypical choroid plexus papilloma

Choroid plexus carcinoma

Embryonal tumors

Medulloblastoma

Medulloblastomas, molecularly defined

Medulloblastoma, WNT-activated

Medulloblastoma, SHH-activated and *TP53*-wildtypeMedulloblastoma, SHH-activated and *TP53*-mutant

Medulloblastoma, non-WNT/non-SHH

Medulloblastomas, histologically defined

Other CNS embryonal tumors

Atypical teratoid/rhabdoid tumor

Cribriform neuroepithelial tumor

Embryonal tumor with multilayered rosettes

CNS neuroblastoma, *FOXR2*-activatedCNS tumor with *BCOR* internal tandem duplication

CNS embryonal tumor

Pineal tumors

Pineocytoma

Pineal parenchymal tumor of intermediate differentiation

Pineoblastoma

Papillary tumor of the pineal region

Desmoplastic myxoid tumor of the pineal region, *SMARCB1*-mutant

Cranial and paraspinal nerve tumors

Schwannoma

Neurofibroma

Perineurioma

Hybrid nerve sheath tumor

Malignant melanotic nerve sheath tumor

Malignant peripheral nerve sheath tumor

Paraganglioma

Meningiomas

Meningioma

Mesenchymal, non-meningothelial tumors

Soft tissue tumors

Fibroblastic and myofibroblastic tumors

Solitary fibrous tumor

Vascular tumors

Hemangiomas and vascular malformations

Hemangioblastoma

Skeletal muscle tumors

Rhabdomyosarcoma

Uncertain differentiation

*Intracranial mesenchymal tumor, FET-CREB fusion-positive**CIC*-rearranged sarcomaPrimary intracranial sarcoma, *DICER1*-mutant

Ewing sarcoma

Table 1 Continued

World Health Organization Classification of Tumors of the Central Nervous System, fifth edition

Chondro-osseous tumors
Chondrogenic tumors
Mesenchymal chondrosarcoma
Chondrosarcoma
Notochordal tumors
Chordoma (including poorly differentiated chordoma)
Melanocytic tumors
Diffuse meningeal melanocytic neoplasms
Meningeal melanocytosis and meningeal melanomatosis
Circumscribed meningeal melanocytic neoplasms
Meningeal melanocytoma and meningeal melanoma
Hematolymphoid tumors
Lymphomas
CNS lymphomas
Primary diffuse large B-cell lymphoma of the CNS
Immunodeficiency-associated CNS lymphoma
Lymphomatoid granulomatosis
Intravascular large B-cell lymphoma
Miscellaneous rare lymphomas in the CNS
MALT lymphoma of the dura
Other low-grade B-cell lymphomas of the CNS
Anaplastic large cell lymphoma (<i>ALK+</i> / <i>ALK-</i>)
T-cell and NK/T-cell lymphomas
Histiocytic tumors
Erdheim-Chester disease
Rosai-Dorfman disease
Juvenile xanthogranuloma
Langerhans cell histiocytosis
Histiocytic sarcoma
Germ cell tumors
Mature teratoma
Immature teratoma
Teratoma with somatic-type malignancy
Germinoma
Embryonal carcinoma
Yolk sac tumor
Choriocarcinoma
Mixed germ cell tumor
Tumors of the sellar region
Adamantinomatous craniopharyngioma
Papillary craniopharyngioma
Pituicytoma, granular cell tumor of the sellar region, and spindle cell oncocyoma
Pituitary adenoma/PitNET
Pituitary blastoma
Metastases to the CNS
Metastases to the brain and spinal cord parenchyma
Metastases to the meninges

Abbreviations: CNS, central nervous system; IDH, isocitrate dehydrogenase; NK, natural killer; PitNET, pituitary neuroendocrine tumor; SHH, sonic hedgehog.

Table 2 Key Diagnostic Genes, Molecules, Pathways, and/or Combinations in Major Primary CNS Tumors

Tumor Type	Genes/Molecular Profiles Characteristically Altered ^a
Astrocytoma, IDH-mutant	<i>IDH1, IDH2, ATRX, TP53, CDKN2A/B</i>
Oligodendroglioma, IDH-mutant, and 1p/19q-codeleted	<i>IDH1, IDH2, 1p/19q, TERT promoter, CIC, FUBP1, NOTCH1</i>
Glioblastoma, IDH-wildtype	IDH-wildtype, <i>TERT promoter</i> , chromosomes 7/10, <i>EGFR</i>
Diffuse astrocytoma, <i>MYB</i> - or <i>MYBL1</i> -altered	<i>MYB, MYBL1</i>
Angiocentric glioma	<i>MYB</i>
Polymorphous low-grade neuroepithelial tumor of the young	<i>BRAF, FGFR family</i>
Diffuse low-grade glioma, MAPK pathway-altered	<i>FGFR1, BRAF</i>
Diffuse midline glioma, H3 K27-altered	H3 K27, <i>TP53, ACVR1, PDGFRA, EGFR, EZHIP</i>
Diffuse hemispheric glioma, H3 G34-mutant	H3 G34, <i>TP53, ATRX</i>
Diffuse pediatric-type high-grade glioma, H3-wildtype, and IDH-wildtype	IDH-wildtype, H3-wildtype, <i>PDGFRA, MYCN, EGFR</i> (methylome)
Infant-type hemispheric glioma	NTRK family, <i>ALK, ROS, MET</i>
Pilocytic astrocytoma	<i>KIAA1549-BRAF, BRAF, NF1</i>
High-grade astrocytoma with piloid features	<i>BRAF, NF1, ATRX, CDKN2A/B</i> (methylome)
Pleomorphic xanthoastrocytoma	<i>BRAF, CDKN2A/B</i>
Subependymal giant cell astrocytoma	<i>TSC1, TSC2</i>
Chordoid glioma	<i>PRKCA</i>
Astroblastoma, <i>MN1</i> -altered	<i>MN1</i>
Ganglion cell tumors	<i>BRAF</i>
Dysembryoplastic neuroepithelial tumor	<i>FGFR1</i>
Diffuse glioneuronal tumor with oligodendroglioma-like features and nuclear clusters	Chromosome 14, (methylome)
Papillary glioneuronal tumor	<i>PRKCA</i>
Rosette-forming glioneuronal tumor	<i>FGFR1, PIK3CA, NF1</i>
Myxoid glioneuronal tumor	<i>PDGFRA</i>
Diffuse leptomeningeal glioneuronal tumor	<i>KIAA1549-BRAF</i> fusion, 1p (methylome)
Multinodular and vacuolating neuronal tumor	MAPK pathway
Dysplastic cerebellar gangliocytoma (Lhermitte-Duclos disease)	<i>PTEN</i>
Extraventricular neurocytoma	FGFR (<i>FGFR1-TACC1</i> fusion), IDH-wildtype
Supratentorial ependymomas	<i>ZFTA, RELA, YAP1, MAML2</i>
Posterior fossa ependymomas	H3 K27me3, <i>EZH1P</i> (methylome)
Spinal ependymomas	<i>NF2, MYCN</i>
Medulloblastoma, WNT-activated	<i>CTNNB1, APC</i>
Medulloblastoma, SHH-activated	<i>TP53, PTCH1, SUFU, SMO, MYCN, GLI2</i> (methylome)
Medulloblastoma, non-WNT/non-SHH	<i>MYC, MYCN, PRDM6, KDM6A</i> (methylome)
Atypical teratoid/rhabdoid tumor	<i>SMARCB1, SMARCA4</i>
Embryonal tumor with multilayered rosettes	C19MC, <i>DICER1</i>
CNS neuroblastoma, <i>FOXR2</i> -activated	<i>FOXR2</i>
CNS tumor with <i>BCOR</i> internal tandem duplication	<i>BCOR</i>
Desmoplastic myxoid tumor of the pineal region, <i>SMARCB1</i> -mutant	<i>SMARCB1</i>
Meningiomas	<i>NF2, AKT1, TRAF7, SMO, PIK3CA; KLF4, SMARCE1, BAP1</i> in subtypes; H3K27me3; <i>TERT promoter, CDKN2A/B</i> in CNS WHO grade 3
Solitary fibrous tumor	<i>NAB2-STAT6</i>
Meningeal melanocytic tumors	<i>NRAS</i> (diffuse); <i>GNAQ, GNA11, PLCB4, CYSLTR2</i> (circumscribed)

Table 2 Continued

Tumor Type	Genes/Molecular Profiles Characteristically Altered ^a
Adamantinomatous craniopharyngioma	<i>CTNNB1</i>
Papillary craniopharyngioma	<i>BRAF</i>

Abbreviations: CNS, central nervous system; C19MC, chromosome 19 microRNA cluster; IDH, isocitrate dehydrogenase; SHH, sonic hedgehog. Some of these are definitional for specific diagnoses, while others are not definitional but are characteristically altered or not altered. For each tumor type, these distinctions are specified in the Diagnostic Molecular Pathology as well as the Essential and Desirable Criteria sections of the Blue Book chapters.

^aIn this column, molecules that are definitional (including for those that are wildtype) are listed before others; for those tumor types without specific definitional changes, more commonly altered genes and molecules are listed before others. Most types have characteristic methylome patterns, but “(methylome)” is only listed for those types for which methylome testing offers particular diagnostic guidance, including for designating subtypes (as for *Medulloblastoma, SHH-activated*; *Medulloblastoma, non-WNT/non-SHH*; and *Diffuse leptomeningeal glioneuronal tumor*). H3 is a gene family (eg, *H3F3A, HIST1H3B*).

varnomen.hgvs.org/),¹⁸ and the reporting guidelines for chromosomal alterations of the International System for Human Cytogenetic Nomenclature 2020.¹⁹ Gene symbols are presented in italics, but proteins and gene groups (eg, the family of IDH genes) are not italicized.

A sequence alteration relative to a transcript reference sequence is reported using a “c.” prefix for the coding DNA sequence, followed by the nucleotide number and nucleotide change. The predicted protein sequence change then follows a “p.” prefix with the reference amino acid, the amino acid number, and the variant amino acid resulting from the mutation. For example, the most common BRAF variant is *BRAF:c.1799T>A p.Val600Glu* (or *BRAF:c.1799T>A p.V600E* if single-letter amino acid codes are preferred). Notably, this example assumes that a particular *BRAF* transcript reference sequence accession and version have previously been defined, eg, NM_004333.5.

For some genes, such as those in the H3 histone group, there is potential for confusion with amino acid numbering. Histone amino acid positions are typically described in the context of the protein sequence lacking the initiating methionine, resulting in a single amino acid difference in numbering compared with the predicted sequence derived from the corresponding gene transcript. The description of histone sequence alterations in many cancers has therefore differed to date from the HGVS numbering by omitting the first amino acid. Next-generation sequencing reports, however, follow HGVS guidelines. The coexistence of these 2 nomenclatures may lead to confusion for pathologists, oncologists, and researchers. To address this issue, the fifth edition uses the legacy protein numbering system in parentheses after the protein-level variant description, eg, *H3-3A:c.103G>A p.Gly35Arg (G34R)*, or *H3-3A:c.83A>T p.Lys28Met (K27M)*. In these examples, as noted above, prior definition of the accession and version of the reference transcript is required.

CNS Tumor Grading

CNS tumor grading has for many decades differed from the grading of other, non-CNS neoplasms, since brain and spinal cord tumors have had grades applied across different entities.²⁰ As discussed below, WHO CNS5 has moved CNS tumor grading closer to how grading is done for non-CNS

neoplasms but has retained some key aspects of traditional CNS tumor grading because of how embedded such grading has been in neuro-oncology practice. Two specific aspects of CNS tumor grading have changed for WHO CNS5: Arabic numerals are employed (rather than Roman numerals) and neoplasms are graded *within* types (rather than across different tumor types).¹⁴ Nonetheless, because CNS tumor grading still differs from other tumor grading systems, WHO CNS5 endorses use of the term “CNS WHO grade” when assigning grade (eg, see [Tables 3–6](#)).

Arabic vs Roman numerals. —Traditionally, CNS WHO tumor grades were written as Roman numerals. However, the fifth-edition WHO Blue Books have emphasized more uniform approaches to tumor classification and grading and have favored the use of Arabic numerals for grading, as is currently done for all the other organ systems. Furthermore, a danger of using Roman numerals in a within-tumor grading system is that a “II” and a “III” or a “III” and a “IV” can be mistaken for one another and an uncaught typographical error could have clinical consequences. This was less likely when each tumor type had a different name, eg, “anaplastic” was present in addition to grade “III.” Given these considerations, WHO CNS5 has changed all CNS WHO tumor grades to Arabic numerals ([Table 3](#)).

Grading within types. —As outlined above, CNS tumors have traditionally had a grade assigned to each entity, and grades were applied across different entities.²⁰ For example, in prior WHO classifications, if a tumor had been classified as an anaplastic astrocytoma, it was automatically assigned to WHO grade III (Roman numerals were used for CNS tumor grading in past classifications); there was no option to grade an anaplastic astrocytoma as WHO grade I, II, or IV. Notably, an anaplastic (malignant) meningioma was also assigned to WHO grade III. Even though tumors like meningiomas and astrocytomas are biologically unrelated, WHO grade III tumors in these different categories were expected to have roughly similar survival times. But these were only roughly similar, with the clinical course of an anaplastic astrocytoma often quite different from that of an anaplastic (malignant) meningioma. This

Table 3 CNS WHO Grades of Selected Types, Covering Entities for Which There Is a New Approach to Grading, an Updated Grade, or a Newly Recognized Tumor That Has an Accepted Grade

CNS WHO Grades of Selected Types	
Astrocytoma, IDH-mutant	2, 3, 4
Oligodendroglioma, IDH-mutant, and 1p/19q-codeleted	2, 3
Glioblastoma, IDH-wildtype	4
Diffuse astrocytoma, <i>MYB</i> - or <i>MYBL1</i> -altered	1
Polymorphous low-grade neuroepithelial tumor of the young	1
Diffuse hemispheric glioma, H3 G34-mutant	4
Pleomorphic xanthoastrocytoma	2, 3
Multinodular and vacuolating neuronal tumor	1
Supratentorial ependymoma ^a	2, 3
Posterior fossa ependymoma ^a	2, 3
Myxopapillary ependymoma	2
Meningioma	1, 2, 3
Solitary fibrous tumor	1, 2, 3

Grade is based on natural history and for some tumor types, definite grading criteria and understanding of natural history are not yet known. Note the use of Arabic numerals.

^aFor morphologically defined ependymomas.

approach thus correlated grade to an idealized clinical-biological behavior; for instance, WHO grade I tumors were curable if they could be surgically removed; at the other end of the spectrum, WHO grade IV tumors were highly malignant, leading to death in relatively short periods of time in the absence of effective therapy.

This entity-specific and clinical approach to tumor grading was different from the grading used in other, non-CNS tumor types.²⁰ Most tumors in other organ systems are graded *within tumor* types, eg, a breast or prostate cancer is graded according to its particular grading system. In the 2016 CNS WHO classification, solitary fibrous tumor/hemangiopericytoma was graded in this manner, using a single name but with the option of 3 grades. In WHO CNS5, the shift to *within-tumor-type* grading has been extended to many categories (eg, see Tables 3 and 5). This change was done for several reasons: (1) to provide more flexibility in using grade relative to the tumor type, (2) to emphasize biological similarities *within tumor* types rather than approximate clinical behavior, and (3) to conform with WHO grading in non-CNS tumor types.

“Clinicopathological” grading.—Nonetheless, because CNS tumor grading has for decades been linked to overall expected clinical-biological behaviors (see above), WHO CNS5 has generally retained the ranges of grades used for tumor types in prior editions. In this context, IDH-mutant astrocytomas extend from CNS WHO grade 2-4 and meningiomas from CNS WHO grade 1-3. In other words, at least for now, there is neither a CNS WHO grade 1 IDH-mutant astrocytoma nor a CNS WHO grade 4 meningioma. Moreover, given that tumors are graded on the basis of their expected natural history, certain malignant tumors (eg, medulloblastoma, germinoma) can be assigned a CNS WHO grade 4 designation in WHO CNS5 even if they now have effective treatments associated

with favorable survival times, particularly in the case of certain molecularly defined types like WNT-activated medulloblastoma.

The above approach to grading is a compromise since the original underlying prognostic correlations were based on natural history, at a time when few effective therapies were available. Today, estimating natural history is nearly impossible, since practically all patients receive therapies that often affect overall survival.²¹ In the context of modern therapies that can dramatically affect patient survival, the necessity of grading every tumor type is questionable. In fact, in editorial discussions for WHO CNS5, it was argued that grades should not be assigned if designation of a grade could confuse clinical care (eg, see Table 6). For instance, WNT-activated medulloblastoma is an embryonal tumor that has an aggressive behavior if left untreated but that is responsive to current therapeutic regimens such that nearly all patients have long-term survival. Designating this tumor as CNS WHO grade 4, and therefore equivalent to many untreatable pediatric brain tumors with a dismal outcome, potentially risks giving a false sense of prognosis when therapeutic options are discussed in the clinic. Conversely, designating this tumor as CNS WHO grade 1 on the basis of its good outcome, and therefore equivalent to neoplasms with a similar prognosis on the basis of surgery alone, certainly gives a false sense that the tumor is biologically benign.

Combined histological and molecular grading.—Traditionally, CNS tumor grading has been based exclusively on histological features, but certain molecular markers can now provide powerful prognostic information. For this reason, molecular parameters have now been added as biomarkers of grading and for further estimating prognosis within multiple tumor types. Examples in WHO CNS5 include *CDKN2A/B* homozygous deletion in

IDH-mutant astrocytomas, as well as *TERT* promoter mutation, *EGFR* amplification, and +7/–10 copy number changes in IDH-wildtype diffuse astrocytomas (allowing a glioblastoma, IDH-wildtype CNS WHO grade 4 designation even in cases that otherwise appear histologically lower grade). In other words, a molecular parameter can sometimes add value to histological findings in assigning a grade. Specific instances are discussed for the relevant tumor types (see below). It is also important to note that CNS WHO grade is therefore no longer restricted to being a histological grade, as was previously recommended.²²

NOS (Not Otherwise Specified) and NEC (Not Elsewhere Classified) Diagnoses

As detailed elsewhere,^{12,13} use of the suffixes NOS and NEC allow the ready separation of standard, well-characterized WHO diagnoses from those diagnoses that result from either (1) a lack of necessary diagnostic (eg, molecular) information or (2) nondiagnostic (ie, for a WHO diagnosis) or negative results. Adding an NOS suffix indicates that the diagnostic information (histological or molecular) necessary to assign a specific WHO diagnosis is not available, providing an alert to the oncologist that a molecular work-up has not been undertaken or failed technically. An NEC suffix, on the other hand, indicates that the necessary diagnostic testing has been successfully performed but that the results do not readily allow for a WHO diagnosis; for example, if there is a mismatch between clinical, histological, immunohistochemical, and/or genetic features. NEC diagnoses are what pathologists have termed “descriptive diagnoses,” in which the pathologist uses a non-WHO diagnosis to categorize the tumor. In this regard, an NEC designation provides an alert to the oncologist that, despite an adequate pathological work-up, the tumor does not conform to a standard WHO diagnosis. Like WHO diagnoses, NEC and NOS diagnoses are facilitated by the use of layered integrated reports²² (see below and [Tables 4-6](#)).

Novel Diagnostic Technologies

Over the past century, many novel technologies have impacted tumor classification. These have included light microscopy, histochemical stains, electron microscopy, immunohistochemistry, molecular genetics, and most recently, a variety of broad molecular profiling approaches. Each burst on the scene as a method that promised to change classification completely and each then eventually found a specific niche alongside the others, rather than

replacing them. Over the past couple of decades, nucleic acid-based methodologies (eg, DNA and RNA sequencing, DNA fluorescence in situ hybridization, RNA expression profiling) have clearly shown their abilities to contribute to tumor diagnosis and classification, as evidenced by the changes in the updated fourth edition (2016) and in WHO CNS5. The availability of such technologies was increasing throughout the world as the 2016 classification was being prepared,^{23,24} and the last few years have witnessed further expansion of availability as well as skillful ways to adapt to molecular classification recommendations.^{25,26} WHO CNS5 thus incorporates more molecular approaches for the classification of CNS tumors.

Over the past decade, methylome profiling—the use of arrays to determine DNA methylation patterns across the genome—has emerged as a powerful approach to CNS tumor classification, as detailed in a variety of publications over the past few years.^{27–30} Most CNS tumor types can be reliably identified by their methylome profile, although caveats remain that optimal methodologic approaches and regulatory issues for methylome profiling have yet to be resolved and that the technology is currently not widely available.¹⁴ Copy number profiles can also be derived from methylation data, eg, 1p/19q codeletion, the +7/–10 signature, amplifications, homozygous deletions, and profiles suggestive of fusion events. At this time, methylome profiling is an effective ancillary method for brain and spinal cord tumor classification when used alongside other, standard technologies, including histology. Indeed, the great majority of tumor types and subtypes can also be reliably identified by other techniques, eg, from a combination of morphological features and defining genetic alteration. On the other hand, methylome profiling may be the most effective way to characterize some tumors with unusual morphological features and may be the only current way to identify some rare tumor types and subtypes. The method also has utility when small biopsy samples are limiting for standard technologies. Methylome profiling may also be used as a surrogate marker for genetic events, for instance when a methylome signature is characteristic of an IDH-wildtype glioblastoma in the absence of IDH mutation testing—but methylome profiling cannot serve as a surrogate when targeted therapies and clinical trials require the demonstration of specific mutations prior to patient treatment. For methylome profiling results, careful attention must be paid to the common calibrated score threshold; as discussed in detail elsewhere,²⁸ thresholds may be set at 0.84 or 0.90, and pathologists should be wary about endorsing suggested diagnoses with scores below 0.84 and should probably discard recommendations if scores are below 0.50. As with other diagnostic tests, the pathologist must take into account histological features (eg, tumor cell amount and purity) when interpreting results; for example, methylome profiling can struggle with classification of low-grade diffuse gliomas. For the WHO CNS5, therefore, it is assumed that nearly all (but not all) tumor types are aligned to a distinct methylation signature²⁷ and these are not specified in every Definition; however, information about diagnostic methylation profiling is included in those Definitions and Essential and Desirable Diagnostic Criteria sections for which the method can provide more critical guidance for diagnosis.

Table 4 Layered Report Structure

Integrated diagnosis (combined tissue-based histological and molecular diagnosis)
Histological diagnosis
CNS WHO grade
Molecular information (listed)

Integrated and Layered Diagnoses

Because of the growing importance of molecular information in CNS tumor classification, diagnoses and diagnostic reports need to combine different data types into a single, “integrated” diagnosis. Such integrated diagnoses are implicit in the use of WHO CNS5. Even diagnostic terms that do not incorporate a molecular term may require a molecular characteristic for diagnosis (eg, AT/RT). Thus, to display the full range of diagnostic information available, the use of layered (or tiered) diagnostic reports is strongly encouraged, as endorsed by the International Society of Neuropathology—Haarlem consensus guidelines²² and the International Collaboration on Cancer Reporting.³¹ Such reports feature an integrated diagnosis at the top, followed by layers that display histological, molecular, and other key types of information (Table 4).

For some tumor types in WHO CNS5, the listed diagnostic terms are general ones (eg, *Diffuse high-grade pediatric-type glioma, H3-wildtype and IDH-wildtype* and *Diffuse low-grade glioma, MAPK pathway-altered*); for these types, a combination of diagnostic features drawn from a matrix of relevant histological and molecular abnormalities is necessary to arrive at a specific integrated diagnosis. These approaches are described for each of these tumor groups and are similar to how the 2016 CNS WHO classified medulloblastomas²² and what cIMPACT-NOW Update 4 recommended for pediatric low-grade diffuse gliomas¹⁰: an integrated diagnosis optimally combines a term from a histologically defined list of tumors and a genetically defined list of tumors (Tables 4–6). Even though each list may contain many items, some combinations

are more common than others. The resulting number of routinely used integrated diagnoses is typically manageable, and common diagnoses are included as tumor subtypes in the case of *Diffuse low-grade glioma, MAPK pathway-altered*.

In WHO CNS5, Essential and Desirable Diagnostic Criteria are given for each tumor type, mostly in tabular form, in the hope that such a format makes it easier for the user to evaluate whether key diagnostic criteria are present and whether the combinations of such criteria are sufficient for diagnosis. Essential Diagnostic Criteria are considered “must have” features, but there may be different combinations that allow a diagnosis, ie, not all criteria are needed for a diagnosis. For these diagnostic types, the user should pay close attention to the use of “AND” vs “OR” designations in the Essential Diagnostic Criteria tables. On the other hand, Desirable Diagnostic Criteria are “nice to have” features, ie, they clearly support a diagnosis but are not needed per se.

Newly Recognized Entities and Revised Nomenclature

The major specific changes to the classification are discussed in sections relating to families of tumors below. Multiple newly recognized types (see Table 7) have been accepted into WHO CNS5, and some of the more distinct microscopic features are illustrated in Figures 1–8. In addition, changes were made to the nomenclature of some entities, both to clarify molecular alterations and to follow the nomenclature guidelines in cIMPACT-NOW Update 6¹⁴

Table 5 Layered Report Example Illustrating: (1) Use of Site in the Diagnosis; (2) Use of a Histological Diagnosis That Does Not Designate “Anaplasia” But the Report Still Assigns a Grade; (3) Use of the NOS Designation (Here Because the Case Could Not Be Worked up Adequately at a Molecular Level)

Cerebrum	
Integrated diagnosis	Supratentorial ependymoma, NOS
Histopathological classification	Ependymoma
CNS WHO grade	3
Molecular information	Derivatives extracted from FFPE tissue were of insufficient quality for sequencing and insufficient tissue remained for FISH studies

Abbreviations: CNS, central nervous system; FFPE, formalin-fixed paraffin-embedded; FISH, fluorescence in situ hybridization; NOS, not otherwise specified.

Table 6 Layered Report Example Illustrating: (1) A Tumor Type With a Subtype; (2) Lack of a Definite Grade; and (3) That the Integrated Diagnosis Does Not Necessarily Have the Histological Designation Included

Cerebrum	
Integrated diagnosis	Diffuse low-grade glioma, MAPK pathway-altered <i>Subtype: Diffuse low-grade glioma, FGFR1 TKD-duplicated</i>
Histopathological classification	Oligodendroglioma
CNS WHO grade	Not assigned
Molecular information	Duplication of the <i>FGFR1</i> tyrosine kinase domain (next-generation sequencing)

Table 7 Newly Recognized Tumor Types in the 2021 WHO Classification of Tumors of the Central Nervous System

Newly Recognized Tumor Types
Diffuse astrocytoma, <i>MYB</i> - or <i>MYBL1</i> -altered
Polymorphous low-grade neuroepithelial tumor of the young
Diffuse low-grade glioma, MAPK pathway-altered
Diffuse hemispheric glioma, H3 G34-mutant
Diffuse pediatric-type high-grade glioma, H3-wildtype and IDH-wildtype
Infant-type hemispheric glioma
High-grade astrocytoma with piloid features
<i>Diffuse glioneuronal tumor with oligodendroglioma-like features and nuclear clusters</i> (provisional type)
Myxoid glioneuronal tumor
Multinodular and vacuolating neuronal tumor
Supratentorial ependymoma, <i>YAP1</i> fusion-positive
Posterior fossa ependymoma, group PFA
Posterior fossa ependymoma, group PFB
Spinal ependymoma, <i>MYCN</i> -amplified
<i>Cribriform neuroepithelial tumor</i> (provisional type)
CNS neuroblastoma, <i>FOXR2</i> -activated
CNS tumor with <i>BCOR</i> internal tandem duplication
Desmoplastic myxoid tumor of the pineal region, <i>SMARCB1</i> -mutant
<i>Intracranial mesenchymal tumor, FET-CREB fusion positive</i> (provisional type)
<i>CIC</i> -rearranged sarcoma
Primary intracranial sarcoma, <i>DICER1</i> -mutant
Pituitary blastoma

(see Table 8). Other nomenclature changes were made to standardize type names with those in other Blue Books, eg, for peripheral nerve and other soft tissue tumors.

Some proposed tumor types were discussed and provisionally accepted as types because they appeared to be clinicopathologically distinct, but additional published studies are needed for full acceptance. The 3 provisional entities are designated in italics in the table: *Diffuse glioneuronal tumor with oligodendroglioma-like features and nuclear clusters* (DGONC); *Cribriform neuroepithelial tumor* (CRINET); and *Intracranial mesenchymal tumor, FET-CREB fusion-positive*. Others were discussed during the editorial process, but the published literature still left questions about the nature of the proposed entity. An example of this was *Neuroepithelial tumor, PATZ1 fusion-positive*, for which there are only a few cases described in the literature.³²⁻³⁴ While unpublished data suggest that these lesions have distinct molecular alterations, there is marked heterogeneity in their histopathological appearances and clinical courses, and therefore more published data are needed to evaluate whether these cases form a distinct tumor type.

Specific Changes

Gliomas, Glioneuronal Tumors, and Neuronal Tumors

WHO CNS5 has taken a new approach to classify the *Gliomas*, *Glioneuronal Tumors*, and *Neuronal Tumors*,

and dividing them into 6 different families: (1) *Adult-type diffuse gliomas* (the majority of primary brain tumors in neuro-oncology practice of adults, eg, *glioblastoma*, *IDH-wildtype*); (2) *Pediatric-type diffuse low-grade gliomas* (expected to have good prognoses); (3) *Pediatric-type diffuse high-grade gliomas* (expected to behave aggressively); (4) *Circumscribed astrocytic gliomas* (“circumscribed” referring to their more solid growth pattern, as opposed to the inherently “diffuse” tumors in groups 1, 2, and 3); (5) *Glioneuronal and neuronal tumors* (a diverse group of tumors, featuring neuronal differentiation); and (6) *Ependymomas* (now classified by site as well as histological and molecular features). *Choroid Plexus Tumors*, with their marked epithelial characteristics, are separated from the category of *Gliomas*, *Glioneuronal Tumors*, and *Neuronal Tumors*.

Fourteen newly recognized types have been added to the classification of *Gliomas*, *Glioneuronal Tumors*, and *Neuronal Tumors* (see Table 7). For some of these types—especially for *Diffuse high-grade pediatric-type, H3-wildtype and IDH-wildtype*, and for *Diffuse low-grade glioma, MAPK pathway-altered*—integrating histological appearances and molecular features is required to arrive at a diagnosis, and such data are most effectively displayed as tiers of information. There have also been some nomenclature changes to existing entities. For example, the diffuse midline glioma is now designated as “H3 K27-altered” rather than “H3 K27M-mutant” in order to recognize alternative mechanisms by which the pathogenic pathway can be altered in these tumors.³⁵ Astroblastoma

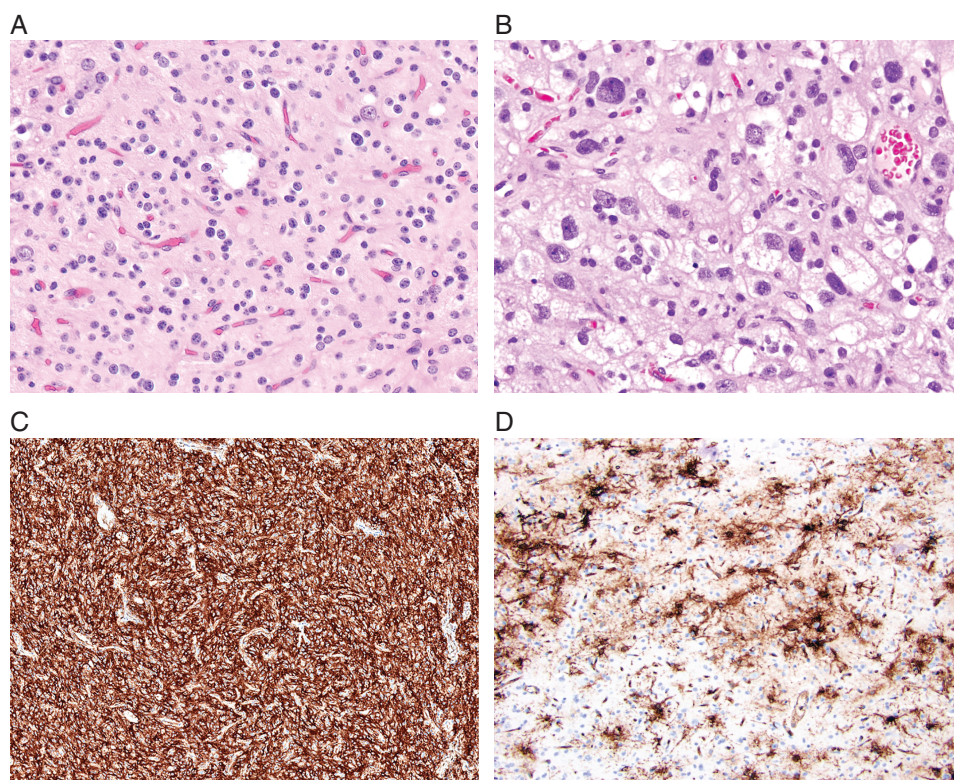


Fig. 1 Polymorphous low-grade neuroepithelial tumor of the young (PLNTY) is a glial neoplasm associated with a history of epilepsy in young people, diffuse growth patterns, frequent presence of oligodendrogloma-like components, calcification, CD34 immunoreactivity, and MAPK pathway-activating genetic abnormalities. (A) Common oligodendrogloma-like appearance (H&E, $\times 200$), but (B) histological appearances can vary greatly within tumors (H&E, $\times 400$). (C) CD34 immunostaining is typically strong and diffuse in the tumor ($\times 100$); and (D) is often found in the peritumoral cortex ($\times 200$).

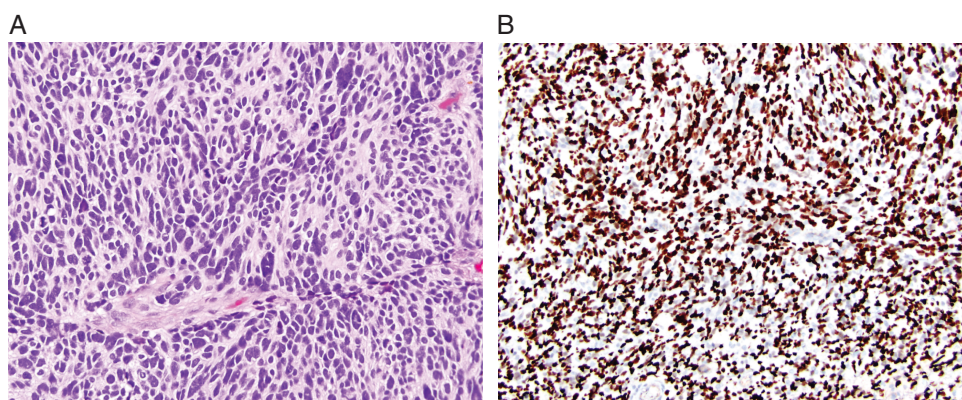


Fig. 2 Diffuse hemispheric glioma, H3 G34-mutant, is a malignant, infiltrative glioma, typically of the cerebral hemispheres and with a missense mutation in the *H3F3A* gene that results in a G34R/V substitution of histone H3. (A) High-grade anaplastic features, sometimes with an embryonal appearance (H&E, $\times 200$) and (B) positive nuclear staining with H3 G34R/V immunohistochemistry ($\times 100$).

has been specified as “*MN1*-altered” to provide more diagnostic focus for this entity, even though future work will be needed to establish clear histopathological and molecular parameters by which astroblastomas with *MN1* alterations

can be distinguished from morphologically comparable neuroepithelial tumors with similar genetic alterations. For other tumor types, changes in nomenclature regarding the inclusion of genetic and anatomical site modifiers have

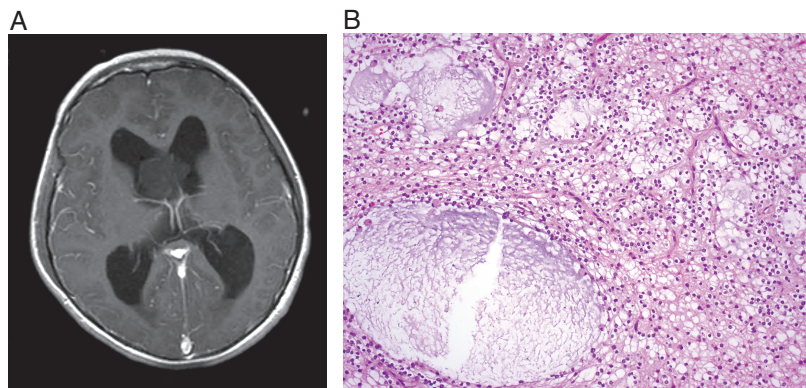


Fig. 3 Myxoid glioneuronal tumor is a tumor typically arising in the septal region and involving the lateral ventricle. It is characterized by a proliferation of oligodendrocyte-like tumor cells embedded in a prominent myxoid stroma, often including admixed floating neurons, neurocytic rosettes, and/or perivascular neuropil, and by a dinucleotide mutation in the *PDGFRA* gene. (A) Common septal location (magnetic resonance imaging, T1 with contrast) and (B) characteristic histological features with small round cells and myxoid stroma (H&E, $\times 200$).

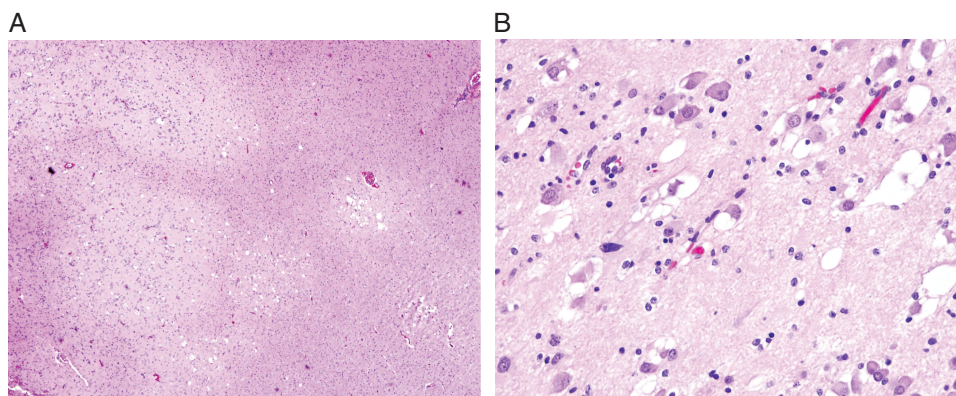


Fig. 4 Multinodular and vacuolating neuronal tumor is a benign tumor comprising monomorphous neuronal elements in discrete and coalescent nodules, with vacuolar changes both in tumor cells and the neuropil. (A) Multinodular appearance (H&E, $\times 40$). (B) Vacuolar change in tumor cells and in neuropil (H&E, $\times 200$).

followed the recommendations of cIMPACT-NOW Update 6¹⁴ and cIMPACT-NOW Update 7.¹⁶ Nearly all of these newly recognized types can be diagnosed on the basis of standard histological, immunohistochemical, and molecular analyses.

Division of diffuse gliomas into adult-type and pediatric-type.—Importantly, WHO CNS5 recognizes the clinical and molecular distinctions between those diffuse gliomas that primarily occur in adults (termed “adult-type”) and those that occur primarily in children (termed “pediatric-type”). Note the use of the word “primarily” in the last sentence, since pediatric-type tumors may sometimes occur in adults, particularly young adults, and adult-type tumors may more rarely occur in children. Nonetheless, the division of the classification into adult-type and pediatric-type

diffuse gliomas should be a step forward in clearly separating these prognostically and biologically distinct groups of tumors. The need to do so has been considered for a long time, but the elucidation of molecular differences has now made this possible. It is hoped that this distinction will enable improved care for both children and adults with CNS tumors.

Simplification of the classification of common, adult-type, diffuse gliomas.—In the updated fourth edition CNS classification from 2016, the common diffuse gliomas of adults were divided into 15 entities, largely because different grades were assigned to different entities (eg, *Anaplastic oligodendroglioma* was considered a different type from *Oligodendroglioma*) and because NOS designations were assigned to distinct entities (eg,

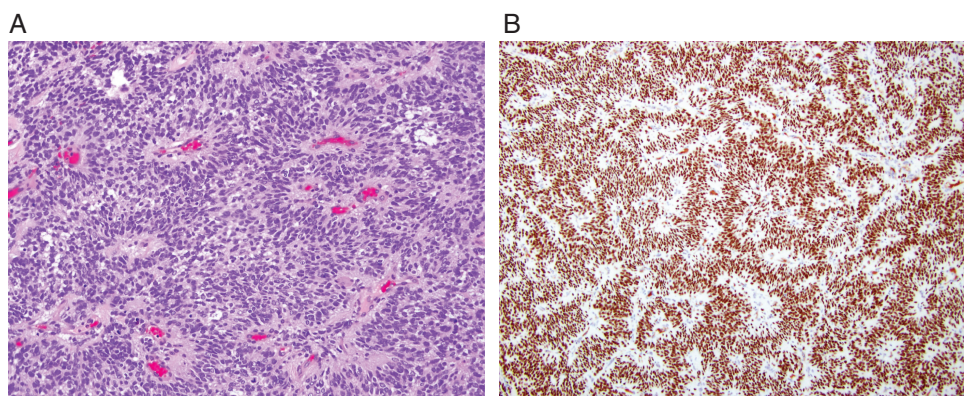


Fig. 5 CNS tumor with *BCOR* internal tandem duplication is a neoplasm with a mostly solid growth pattern, uniform oval or spindle-shaped cells, a dense capillary network, focal pseudorosette formation, and an internal tandem duplication (ITD) in exon 15 of the *BCOR* gene. (A) High-grade neoplasm with perivascular rosettes (H&E, ×200) and (B) strong, diffuse nuclear staining on *BCOR* immunohistochemistry (×100).

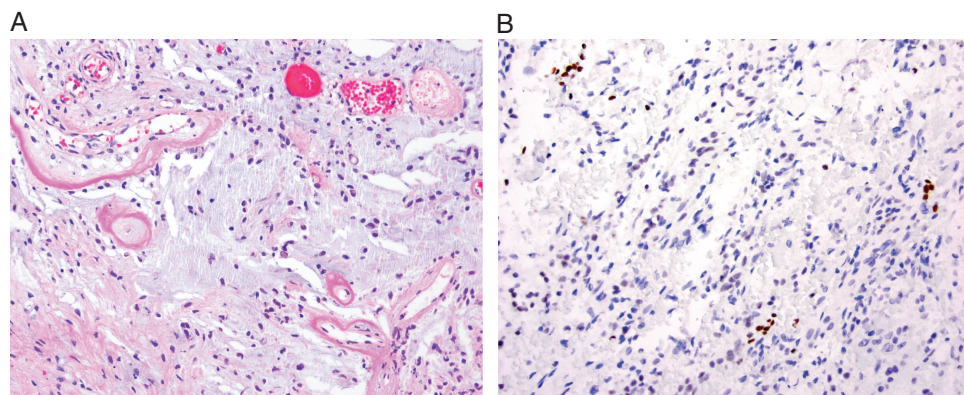


Fig. 6 Desmoplastic myxoid tumor of the pineal region, *SMARCB1*-mutant is a rare pineal-region tumor that features desmoplasia and myxoid changes (H&E, ×200) (A) as well as loss of INI1 staining (×200) (B).

Diffuse astrocytoma, NOS). WHO CNS5, on the other hand, includes only 3 types: *Astrocytoma, IDH-mutant*; *Oligodendroglioma, IDH-mutant and 1p/19q-codeleted*; and *Glioblastoma, IDH-wildtype*.

This focusing of the classification has resulted from (1) more ecumenical use of NOS and NEC terminology, as discussed above and in cIMPACT-NOW Update 11²; (2) recognition of the value of molecular diagnostics to assign poorly defined entities (eg, oligoastrocytomas or IDH-wildtype diffuse astrocytic tumors) to more objectively defined types; and (3) use of grades within types^{14,15} rather than requiring each grade to have a different name (see above). In addition, in the fifth edition WHO Blue Books, subtypes (eg, *Gliosarcoma* and *Giant cell glioblastoma*) are not listed in the classification, but these classic variants are discussed in their respective chapters.

Nomenclature and grading of common, adult-type, diffuse astrocytic gliomas.—In the 2016 WHO classification, IDH-mutant diffuse astrocytic tumors were assigned to 3 different tumor types (*Diffuse astrocytoma*, *Anaplastic astrocytoma*, and *Glioblastoma*) depending on histological parameters. In the current classification, however, all IDH-mutant diffuse astrocytic tumors are considered a single type (*Astrocytoma, IDH-mutant*) and are then graded as CNS WHO grade 2, 3, or 4. Moreover, grading is no longer entirely histological, since the presence of *CDKN2A/B* homozygous deletion results in a CNS WHO grade of 4, even in the absence of microvascular proliferation or necrosis.

For IDH-wildtype *diffuse astrocytic* (NB: diffuse and astrocytic) tumors in adults, a number of papers have shown that the presence of 1 or more of 3 genetic parameters (*TERT* promoter mutation, *EGFR* gene amplification,

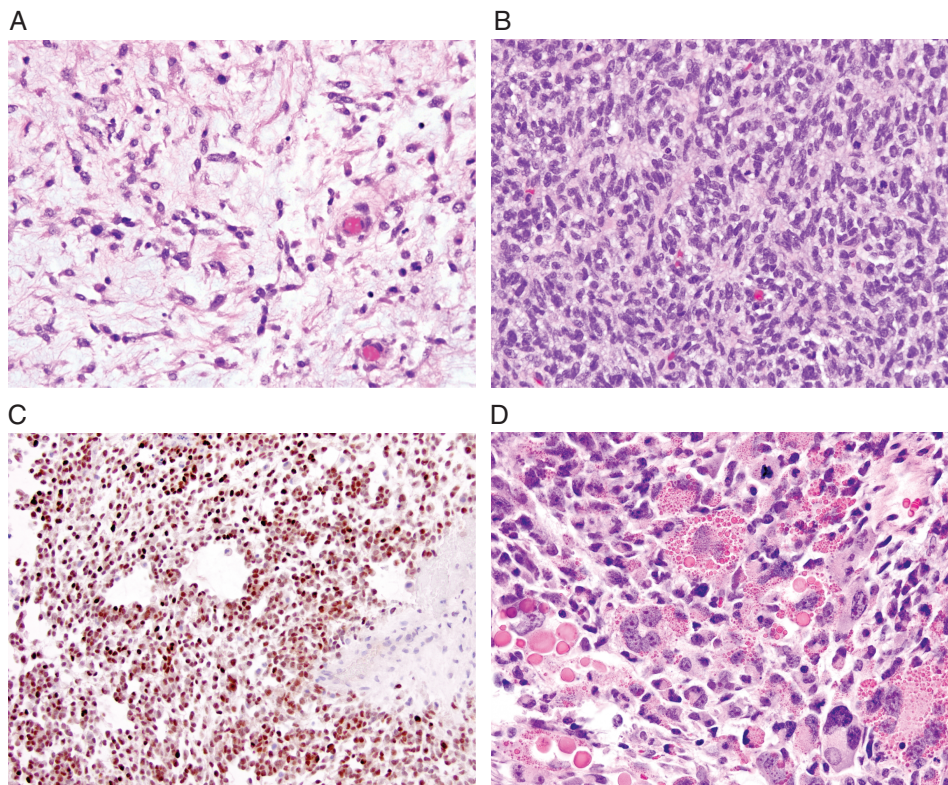


Fig. 7 Newly recognized mesenchymal, non-meningothelial tumors of uncertain histogenesis. (A) Intracranial mesenchymal tumor, FET-CREB fusion-positive (H&E, ×200); these tumors have variable morphology and a fusion of an FET RNA-binding protein family gene and a member of the CREB family of transcription factors. (B, C) *C11orf95*-rearranged sarcoma, with (B) poorly differentiated cells (H&E, ×200) and (C) with ETV4 frequently being upregulated in these tumors (×200). (D) Primary intracranial sarcoma, *DICER1*-mutant with characteristic eosinophilic cytoplasmic droplets (H&E, ×200).

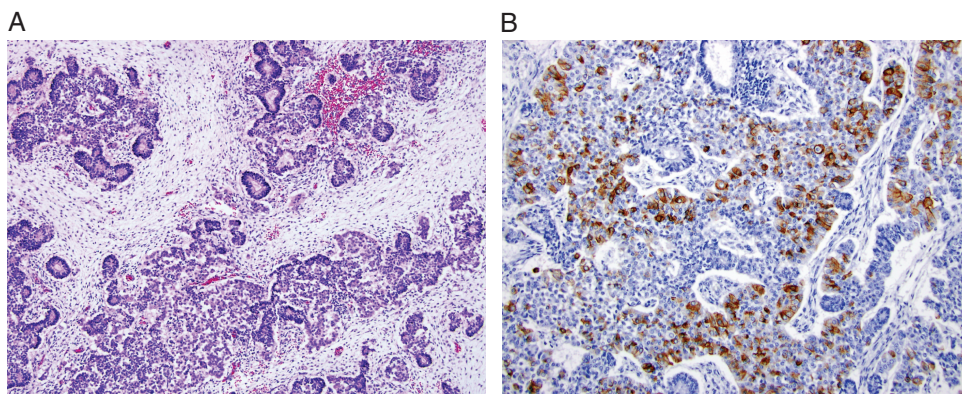


Fig. 8 Pituitary blastoma is a malignant embryonal sellar neoplasm composed of primitive blastemal cells, neuroendocrine cells, and Rathke epithelium, typically occurring in young children and linked to germline or somatic variants in the *DICER1* gene. (A) Neuroendocrine cells arranged in lobules, rosettes, and glands, interspersed with small undifferentiated, blastemal cells (H&E, ×100) and with (B) ACTH immunoreactivity in some cells (×200).

combined gain of entire chromosome 7 and loss of entire chromosome 10 [+7/−10]) appears sufficient to assign the highest WHO grade.^{11,36} WHO CNS5 therefore incorporates

these 3 genetic parameters as criteria for a diagnosis of *Glioblastoma, IDH-wildtype*. As a result, *Glioblastoma, IDH-wildtype* should be diagnosed in the setting of an

Table 8 Tumor Types With Revised Nomenclature or Revised Placement in the 2021 WHO Classification of Tumors of the Central Nervous System

Tumor Types With Revised Nomenclature or Revised Placement
Astrocytoma, IDH-mutant (covers grades 2–4; eliminates the term “Glioblastoma, IDH-mutant”)
Diffuse midline glioma, H3 K27-altered (changes “mutant” to “altered” given multiple mechanisms)
Chordoid glioma (removes site designation)
Astroblastoma, <i>MN1</i> -altered (adds genetic modifier)
Supratentorial ependymoma, <i>ZFTA</i> fusion-positive (reflects changes in fusion partner and gene nomenclature; see text)
Embryonal tumor with multilayered rosettes (removes genetic modifier to allow for genetic subtypes)
Malignant melanotic nerve sheath tumor (conforms to terminology in soft tissue pathology literature)
Solitary fibrous tumor (removes the term “hemangiopericytoma” to conform fully with soft tissue pathology nomenclature)
Mesenchymal chondrosarcoma (formerly a subtype)
Adamantinomatous craniopharyngioma (formerly a subtype)
Papillary craniopharyngioma (formerly a subtype)
Pituicytoma, granular cell tumor of the sellar region, and spindle cell oncocytoma (grouped rather than separate)
Pituitary adenoma/PitNET (adds the term “PitNET”)

IDH-wildtype diffuse *and* astrocytic glioma in adults if there is microvascular proliferation or necrosis or *TERT* promoter mutation or *EGFR* gene amplification or +7/–10 chromosome copy number changes. In IDH-wildtype diffuse astrocytomas occurring in younger age groups, however, consideration should be given to the different types of diffuse pediatric-type gliomas (see below).

Pediatric-type low-grade and high-grade diffuse gliomas.—Two new families of tumor types have been added to the classification to reflect the practical and conceptual importance of separating pediatric-type gliomas from other diffuse gliomas: one for *Pediatric-type diffuse low-grade gliomas* and one for *Pediatric-type diffuse high-grade gliomas*. The low-grade group includes 4 entities that feature diffuse growth in the brain but with sometimes overlapping and less specific histological features; in all, molecular work-up helps to characterize the lesion as one type or the other. For CNS5, the 4 types are *Diffuse astrocytoma, MYB- or MYBL1-altered*; *Angiocentric glioma*; *Polymorphous low-grade neuroepithelial tumor of the young* (often abbreviated as PLNTY; [Figure 1](#)); and *Diffuse low-grade glioma, MAPK pathway-altered*. The last of these diagnoses encompass tumors with an astrocytic or oligodendroglial morphology. For these tumors (as for most other glioma types), precise classification requires molecular characterization and the integration of histopathological and molecular information in a tiered diagnostic format.²² Clear delineation of the specific molecular features, in turn, sets the stage for targeted therapies of such tumors.

The high-grade family also comprises 4 types: *Diffuse midline glioma, H3 K27-altered*; *Diffuse hemispheric glioma, H3 G34-mutant* ([Figure 2](#)); *Diffuse pediatric-type high-grade glioma, H3-wildtype and IDH-wildtype*; and *Infant-type hemispheric glioma*. *Diffuse midline glioma, H3 K27-altered* had been in the 2016 classification, but as mentioned above, its name has been changed to reflect the fact that other changes (eg, *EZH1P* protein overexpression) can

define this entity in addition to the previously recognized H3 K27 mutations. The other 3 are newly recognized types. *Diffuse pediatric-type high-grade glioma, H3-wildtype and IDH-wildtype* is specified as being wildtype for both H3 and IDH gene families and, like many other CNS tumor types, requires molecular characterization and integration of histopathological and molecular data for diagnostic purposes. *Infant-type hemispheric glioma* is a novel type of high-grade glioma that occurs in newborns and infants and that has a distinct molecular profile, with fusion genes involving *ALK*, *ROS1*, *NTRK1/2/3*, or *MET*.^{37,38} Of note, the term “glioblastoma” is no longer used in the setting of a pediatric-type neoplasm.

Neuronal and glioneuronal tumors.—All tumors with a neuronal component have remained grouped together in WHO CNS5. Three new types have been added, although the first is provisional (ie, will likely become a fully recognized type in a future classification but currently awaits further published characterizations): DGONC (provisional); *Myxoid glioneuronal tumor* ([Figure 3](#)); and *Multinodular and vacuolating neuronal tumor* ([Figure 4](#)), which had been discussed in the 2016 classification in the chapter on *Gangliocytoma*.

Ependymomas.—Ependymomas should now be classified according to a combination of histopathological and molecular features as well as anatomic site,¹⁶ thus dividing them into molecular groups across the supratentorial, posterior fossa (PF), and spinal compartments ([Table 1](#)).³⁹ WHO CNS5 also now lists 2 molecularly defined types of supratentorial ependymoma: one with *ZFTA* (the new designation for *C11orf95*, which is considered more representative of the tumor type than *RELA* because it may be fused with partners more than *RELA*) fusion and another with *YAP1* fusion. It also now includes 2 molecularly defined types of PF ependymoma, group PFA and group PFB, as well as a spinal tumor defined by the presence

of *MYCN* amplification. Also listed are ependymomas defined by anatomic location but not by a molecular alteration; these can be used either when molecular analysis finds a different molecular alteration to one used to define ependymomas at a particular site or when molecular analysis fails or is unavailable. As described above, the former situation utilizes the NEC suffix and the latter utilizes the NOS suffix. *Myxopapillary ependymoma* and *Subependymoma* remain tumor types; currently, although these can be identified with methylome studies, molecular classification does not provide added clinicopathological utility for these 2 tumors.¹⁶ In contrast to previous WHO classifications, the myxopapillary ependymoma is now considered CNS WHO grade 2 rather than 1, since its likelihood of recurrence is now understood to be similar to conventional spinal ependymoma. Papillary, clear cell, and tanyctic morphological variants are no longer listed as subtypes of ependymoma, being included instead as patterns in the histopathological description of ependymoma.

Longstanding controversy surrounds the reproducibility and clinicopathological utility of grading ependymal tumors,⁴⁰ although use of WHO grade in the therapeutic stratification of adult patients with supratentorial ependymoma remains established practice⁴¹ while the full clinical associations of molecular alterations in this patient population are being evaluated. WHO CNS5 allows only a histologically defined diagnosis of *Ependymoma* to be made at any of the 3 anatomic sites; the term “anaplastic ependymoma” is no longer listed.¹⁶ Nonetheless, as for other tumors in WHO CNS5, a pathologist can still choose to assign either CNS WHO grade 2 or grade 3 to an ependymoma, according to its histopathological features. In an integrated diagnosis, CNS WHO grade can be presented in a specific tier (eg, [Tables 4–6](#)).²²

Choroid Plexus Tumors

The classification of choroid plexus tumors remains largely unchanged, although this family of tumors has been separated from the category of primary neuroepithelial tumors that feature more glial and/or neuronal differentiation and less epithelial differentiation.

Medulloblastomas

WHO CNS5 has altered the classification of medulloblastomas to mirror new knowledge of their clinical and biological heterogeneity. Initially, consensus established 4 principal molecular groups: WNT-activated, sonic hedgehog (SHH)-activated, group 3, and group 4.⁴² WNT and SHH medulloblastomas were included in the 2016 classification, and SHH tumors divided on the basis of *TP53* status (with *TP53*-mutant and *TP53*-wildtype tumors having markedly different clinicopathological characteristics). Non-WNT/non-SHH medulloblastomas comprised group 3 and group 4 tumors. These groups are represented in WHO CNS5 ([Table 1](#)); however, through large-scale methylation and transcriptome profiling, new subgroups have emerged at a more granular level below the 4 principal molecular groups: 4 subgroups of SHH and 8 subgroups of

non-WNT/non-SHH medulloblastomas.^{43–47} Like the 4 principal molecular groups of medulloblastoma, some of these subgroups are associated with clinicopathological and genetic features that provide clinical utility, having either diagnostic, prognostic, or predictive value. One example is the delineation of 2 (out of 4) SHH subgroups, SHH-1 and SHH-2, both dominated by medulloblastomas from young children.^{47,48} These subgroups show significantly different outcomes, and recent clinical trial data suggest that specific chemotherapeutic regimens can help those patients with tumors in the poor prognosis subgroup^{49,50} indicating that these distinctions may be predictive rather than solely prognostic.

The histopathological classification of medulloblastoma listed in the 2016 WHO classification comprised 4 morphologic types: classic, desmoplastic/nodular, medulloblastoma with extensive nodularity (MBEN), and large cell/anaplastic. These have now been combined into 1 section that describes them as morphologic patterns of an inclusive tumor type, *Medulloblastoma, histologically defined* ([Table 1](#)). The morphologic differences have their own specific clinical associations,^{51–54} and molecularly defined medulloblastomas demonstrate distinct associations with the morphologic patterns. For example, all true desmoplastic/nodular medulloblastomas and MBENs align with the SHH molecular group,⁵⁵ and most are in the SHH-1 and SHH-2 subgroups.⁴⁷ Nearly all WNT tumors have classic morphology, and most large cell/anaplastic tumors belong either to the SHH-3 subgroup or to the Grp3/4 subgroup 2.⁴⁶

Given their heterogeneity and the need to classify medulloblastomas according to a combination of histopathological and molecular features, these tumors should be reported in a layered and integrated format. NOS and NEC options also exist for these lesions in the appropriate settings.

Other Embryonal Tumors

The other embryonal tumors (ie, aside from *Medulloblastoma*) are AT/RT; *Embryonal tumor with multilayered rosettes* (ETMR); *CNS neuroblastoma, FOXR2-activated*; and *CNS tumor with BCOR internal tandem duplication* (ITD; [Figure 5](#)). Whereas AT/RT and ETMR were included in previous WHO classifications, *CNS neuroblastoma, FOXR2-activated* and *CNS tumor with BCOR ITD* are new to CNS5. In addition, CNS5 recognizes 3 molecular subtypes of AT/RT and an ETMR with *DICER1* alteration (in addition to the more common C19MC type). *CNS tumors with BCOR ITD* are now included in WHO CNS5 as embryonal tumors, but these neoplasms are not definitively neuroectodermal. Exon 15 *BCOR* ITDs have been reported in several morphologically similar sarcomas, and there is currently no consensus as to whether these tumors should be considered neuroepithelial or mesenchymal neoplasms; the nosology of such tumor types may need to change in light of future findings. CRINET has been introduced as a provisional entity within this category, and the broad designation *CNS embryonal tumor* is included for embryonal tumors that defy a more specific diagnosis, ie, that are NEC or NOS.^{12,13} Given the histological and

molecular complexity sometimes found in these lesions, an integrated, tiered diagnostic report is helpful for transparent and effective communication of relevant tumor characteristics.^{22,31}

Pineal Tumors

Pineal gland tumors are neoplasms that include *Pineocytoma*, *Pineal parenchymal tumor of intermediate differentiation* (PPTID), and *Pineoblastoma*, as well as *Papillary tumor of the pineal region* (PTPR). An addition to WHO CNS5 is *Desmoplastic myxoid tumor of the pineal region, SMARCB1-mutant* (Figure 6), a rare *SMARCB1*-mutant tumor lacking histopathological signs of malignancy.⁵⁶ Many questions remain about the behavior of pineal tumors, and histological grading criteria for PPTID, PTPR, and *Desmoplastic myxoid tumor, SMARCB1-mutant* are yet to be defined.

Importantly, molecular studies play a role in their diagnoses. For example, *KBTBD4* in-frame insertions are a desirable criterion for the diagnosis of PPTID.⁵⁷ Using methylation profiling, pineoblastomas can be divided into 4 molecular subtypes: *Pineoblastoma, miRNA processing-altered 1* in children and characterized by *DICER1*, *DROSHA*, or *DGCR8* mutations; *Pineoblastoma, miRNA processing-altered 2* mostly in older children with a relatively good prognosis and also featuring *DICER1*, *DROSHA*, or *DGCR8* mutations; *Pineoblastoma, MYC/FOXR2-activated*, in infants and having *MYC* activation and *FOXR2* overexpression; and *Pineoblastoma, RB1-altered*, in infants and with similarities to retinoblastoma.^{58,59}

Meningiomas

Meningioma is considered a single type in WHO CNS5, with its broad morphological spectrum reflected in 15 subtypes. It is now emphasized that the criteria defining atypical or anaplastic (ie, grade 2 and 3) meningioma should be applied regardless of the underlying subtype. As in prior classifications, chordoid and clear cell meningioma are noted to have a higher likelihood of recurrence than the average CNS WHO grade 1 meningioma and have hence been assigned to CNS WHO grade 2; however, larger and prospective studies would be helpful to validate these suggested CNS WHO grade 2 assignments and to suggest additional prognostic biomarkers. In addition, historically, rhabdoid and papillary morphology qualified for CNS WHO grade 3 irrespective of any other indications for malignancy. While papillary and rhabdoid features are often seen in combination with other aggressive features, more recent studies suggest that the grading of these tumors should not be on the basis of a rhabdoid cytology or papillary architecture alone.⁶⁰ Several molecular biomarkers are also associated with classification and grading of meningiomas, including *SMARCE1* (clear cell subtype), *BAP1* (rhabdoid and papillary subtypes), and *KLF4/TRAFF7* (secretory subtype) mutations, *TERT* promoter mutation⁶¹ and/or homozygous deletion of *CDKN2A/B*⁶² (CNS WHO grade 3), H3K27me3 loss of nuclear expression⁶³

(potentially worse prognosis), and methylome profiling⁶⁴ (prognostic subtyping).

Mesenchymal, Non-Meningothelial Tumors

WHO CNS5 has strived to align the terminology of mesenchymal, non-meningothelial tumors with their counterparts in the WHO Blue Book on Bone and Soft Tissue Tumors. WHO CNS5 also now only covers those entities that occur uniquely in the CNS or, though similar to their soft tissue counterparts, are encountered regularly in the CNS. Some common soft tissue tumors that can exceptionally be found in the CNS (eg, leiomyoma) are no longer included given that their diagnostic features are identical to their soft tissue counterparts. New types that have been added are *Intracranial mesenchymal tumor, FET-CREB fusion-positive* (provisional); *CIC-rearranged sarcoma*; and *Primary intracranial sarcoma, DICER1-mutant* (Figure 7). The term “hemangiopericytoma” has been retired, with the tumor now termed only *Solitary fibrous tumor* (rather than the hybrid term “Solitary fibrous tumor/hemangiopericytoma” used in the 2016 CNS classification). This term now aligns with the soft tissue nomenclature, although the newly modified 3-tiered CNS grading scheme remains a site-associated difference.

Nerve Tumors

Several changes were made to the classification of nerve tumors. Because paragangliomas involve specialized neuroendocrine cells of the sympathetic and parasympathetic nervous system, these tumors are now included with nerve tumors. Also, given both immunohistochemical and DNA methylation differences and the lack of familial associations, the paraganglioma of the cauda equina/filum terminale region is now recognized as a distinct tumor type from the more common paragangliomas encountered in other sites. Furthermore, it is now appreciated that the previously designated “melanotic schwannoma” is a highly distinctive and frequently aggressive tumor type with unique genetic underpinnings that distinguish it from all other nerve sheath tumors, including schwannomas; in accordance with the soft tissue classification, its name has been changed to *Malignant melanotic nerve sheath tumor*. Lastly, a new subtype has been added to the neurofibroma section: *Atypical neurofibromatous neoplasm of unknown biological potential (ANNUBP)* is an NF1-associated tumor with worrisome features of malignant transformation that is still quantitatively insufficient for a definitive diagnosis of *Malignant peripheral nerve sheath tumor (MPNST)*.

Lymphomas and Histiocytic Tumors

WHO CNS5 only includes those lymphoid and histiocytic tumor entities that occur relatively often in the CNS or that have special histological or molecular features when they occur in the CNS. The complete spectrum of these neoplasms is covered in the corresponding Blue Book on

Classification of Tumors of Haematopoietic and Lymphoid Tissues.

Tumors of the Sellar Region

In past editions, *Adamantinomatous craniopharyngioma* and *Papillary craniopharyngioma* were considered subtypes (variants) of craniopharyngioma, whereas they are now classified as distinct tumor types, given their different clinical demographics, radiologic features, histopathologic findings, genetic alterations, and methylation profiles.^{65,66} On the other hand, *Pituicytoma*, *Granular cell tumor*, and *Spindle cell oncocytoma* are included in 1 section as a related group of tumor types⁶⁷; although they may represent morphologic variations of the same tumor, patient demographics, and clinical outcomes vary and so they are still classified separately.⁶⁸

For pituitary adenomas, WHO CNS5 follows the guidelines of the fourth-edition endocrine WHO classification, dividing these tumors by their adenohypophyseal cell-lineage according to combined immunohistochemical expression of pituitary hormones and transcription factors. WHO CNS5 also includes the new term *Pituitary neuroendocrine tumor* (PitNET) proposed by the WHO endocrine group, which will be further debated for the fifth-edition WHO classification of endocrine tumors.⁶⁹ Lastly, *Pituitary blastoma* (Figure 8), a rare embryonal neoplasm of infancy composed of primitive blastemal cells, neuroendocrine cells, and Rathke epithelium, has been added as a tumor type in WHO CNS5.

Metastatic Tumors

The section on metastatic tumors is divided into those that preferentially affect the brain and spinal cord parenchyma vs those that favor the meninges. Given progress in the treatment of specific systemic cancers, attention has been paid to those immunohistochemical and molecular diagnostic markers that are helpful for diagnosis and/or for guiding therapies of these tumors.

Genetic Tumor Syndromes

Although genetic tumor syndromes are not part of the official WHO CNS5 classification (eg, they are not in Table 1), those tumor syndromes that characteristically feature nervous system neoplasms are included in the fifth-edition CNS Blue Book. This section has been expanded, now covering 8 disorders not covered in the prior Blue Book.

Conclusions

All classifications are imperfect representations, reflecting the state of understanding in a field at a particular time as well as the interpretations of that information by limited numbers of experts. WHO CNS5, like its predecessors, should therefore be seen as a work in progress, as a stage in the evolution of CNS tumor classification. WHO CNS5

has attempted to introduce new knowledge into the classification in as careful but progressive a manner as possible, by including newly recognized entities, by phasing out ostensibly obsolete tumor types, and by adjusting the taxonomic structure. It is hoped that such changes and their explanations provide practical guidance to pathologists and specialists in neuro-oncology around the world and that such progress benefits the patients who are affected by CNS tumors.

Funding

None.

Conflict of interest statement. The authors have no conflicts of interest relating to the information presented in the manuscript. The content of this article represents the personal views of the authors and does not represent the views of the authors' employers and associated institutions. Where authors are identified as personnel of the International Agency for Research on Cancer/World Health Organization, the authors alone are responsible for the views expressed in this article and they do not necessarily represent the decisions, policy or views of the International Agency for Research on Cancer/World Health Organization.

Authorship statement. All authors contributed to generating the materials expressed in this review, which are part of the 2021 WHO Classification of CNS Tumors. All authors participated in the writing of the article as well as the generation of tables and figures.

References

1. WHO Classification of Tumours Editorial Board. *World Health Organization Classification of Tumours of the Central Nervous System*. 5th ed. Lyon: International Agency for Research on Cancer; 2021.
2. Zulch KJ. *Histological Typing of Tumours of the Central Nervous System*. Vol. 21. Geneva: World Health Organization; 1979.
3. Kleihues P, Burger PC, Scheithauer BW. *Histological Typing of Tumours of the Central Nervous System*. Berlin: Springer-Verlag; 1993.
4. Kleihues P, Cavenee WK. *World Health Organization Classification of Tumours of the Nervous System*. Lyon: WHO/IARC; 2000.
5. Louis DN, Ohgaki H, Wiestler OD, Cavenee WK. *World Health Organization Histological Classification of Tumours of the Central Nervous System*. 4th ed. Lyon: International Agency for Research on Cancer; 2007.
6. Louis DN, Ohgaki H, Wiestler OD, Cavenee WK. *World Health Organization Classification of Tumours of the Central Nervous System*. 4th ed., updated ed. Lyon: International Agency for Research on Cancer; 2016.
7. Louis DN, Aldape K, Brat DJ, et al. cIMPACT-NOW (the consortium to inform molecular and practical approaches to CNS tumor taxonomy): a

- new initiative in advancing nervous system tumor classification. *Brain Pathol.* 2017;27(6):851–852.
8. Louis DN, Aldape K, Brat DJ, et al. Announcing cIMPACT-NOW: the Consortium to Inform Molecular and Practical Approaches to CNS Tumor Taxonomy. *Acta Neuropathol.* 2017;133(1):1–3.
 9. Louis DN, Giannini C, Capper D, et al. cIMPACT-NOW update 2: diagnostic clarifications for diffuse midline glioma, H3 K27M-mutant and diffuse astrocytoma/anaplastic astrocytoma, IDH-mutant. *Acta Neuropathol.* 2018;135(4):639–642.
 10. Ellison DW, Hawkins C, Jones DTW, et al. cIMPACT-NOW update 4: diffuse gliomas characterized by MYB, MYBL1, or FGFR1 alterations or BRAFV600E mutation. *Acta Neuropathol.* 2019;137(4):683–687.
 11. Brat DJ, Aldape K, Colman H, et al. cIMPACT-NOW update 3: recommended diagnostic criteria for “Diffuse astrocytic glioma, IDH-wildtype, with molecular features of glioblastoma, WHO grade IV”. *Acta Neuropathol.* 2018;136(5):805–810.
 12. Louis DN, Wesseling P, Paulus W, et al. cIMPACT-NOW update 1: Not Otherwise Specified (NOS) and Not Elsewhere Classified (NEC). *Acta Neuropathol.* 2018;135(3):481–484.
 13. Louis DN, Ellison DW, Brat DJ, et al. cIMPACT-NOW: a practical summary of diagnostic points from Round 1 updates. *Brain Pathol.* 2019;29(4):469–472.
 14. Louis DN, Wesseling P, Aldape K, et al. cIMPACT-NOW update 6: new entity and diagnostic principle recommendations of the cIMPACT-Utrecht meeting on future CNS tumor classification and grading. *Brain Pathol.* 2020;30(4):844–856.
 15. Brat DJ, Aldape K, Colman H, et al. cIMPACT-NOW update 5: recommended grading criteria and terminologies for IDH-mutant astrocytomas. *Acta Neuropathol.* 2020;139(3):603–608.
 16. Ellison DW, Aldape KD, Capper D, et al. cIMPACT-NOW update 7: advancing the molecular classification of ependymal tumors. *Brain Pathol.* 2020;30(5):863–866.
 17. Bruford EA, Braschi B, Denny P, Jones TEM, Seal RL, Tweedie S. Guidelines for human gene nomenclature. *Nature genetics.* 2020;52(8):754–758.
 18. den Dunnen JT, Dalgleish R, Maglott DR, et al. HGVS recommendations for the description of sequence variants: 2016 update. *Hum Mutat.* 2016;37(6):564–569.
 19. McGowan-Jordan J, Hastings RJ, Moore S, eds. *ISCN 2020: An International System for Human Cytogenomic Nomenclature*. Basel: S. Karger; 2020.
 20. Louis DN, von Deimling A. Grading of diffuse astrocytic gliomas: Broders, Kernohan, Zülch, the WHO... and Shakespeare. *Acta Neuropathol.* 2017;134(4):517–520.
 21. von Deimling A, Ono T, Shirahata M, Louis DN. Grading of diffuse astrocytic gliomas: a review of studies before and after the advent of IDH testing. *Semin Neurol.* 2018;38(1):19–23.
 22. Louis DN, Perry A, Burger P, et al. International Society of Neuropathology–Haarlem consensus guidelines for nervous system tumor classification and grading. *Brain Pathol.* 2014;24(5):429–435.
 23. Aldape K, Nejad R, Louis DN, Zadeh G. Integrating molecular markers into the World Health Organization classification of CNS tumors: a survey of the neuro-oncology community. *Neuro Oncol.* 2017;19(3):336–344.
 24. Andreiulo F, Mazeraud A, Chrétien F, Pietsch T. A global view on the availability of methods and information in the neuropathological diagnostics of CNS tumors: results of an international survey among neuropathological units. *Brain Pathol.* 2016;26(4):551–554.
 25. Santosh V, Sravya P, Gupta T, et al. ISNO consensus guidelines for practical adaptation of the WHO 2016 classification of adult diffuse gliomas. *Neurol India.* 2019;67(1):173–182.
 26. Sonoda Y, Yokoo H, Tanaka S, et al. Practical procedures for the integrated diagnosis of astrocytic and oligodendroglial tumors. *Brain Tumor Pathol.* 2019;36(2):56–62.
 27. Capper D, Jones DTW, Sill M, et al. DNA methylation-based classification of central nervous system tumours. *Nature.* 2018;555(7697):469–474.
 28. Capper D, Stichel D, Sahm F, et al. Practical implementation of DNA methylation and copy-number-based CNS tumor diagnostics: the Heidelberg experience. *Acta Neuropathol.* 2018;136(2):181–210.
 29. Jaunmuktane Z, Capper D, Jones DTW, et al. Methylation array profiling of adult brain tumours: diagnostic outcomes in a large, single centre. *Acta Neuropathol Commun.* 2019;7(1):24.
 30. Priesterbach-Ackley LP, Boldt HB, Petersen JK, et al. Brain tumour diagnostics using a DNA methylation-based classifier as a diagnostic support tool. *Neuropathol Appl Neurobiol.* 2020;46(5):478–492.
 31. Louis DN, Wesseling P, Brandner S, et al. Data sets for the reporting of tumors of the central nervous system: Recommendations from the International Collaboration on Cancer Reporting. *Arch Pathol Lab Med.* 2019;144(2):196–206.
 32. Siegfried A, Rousseau A, Maurage CA, et al. EWSR1-PATZ1 gene fusion may define a new glioneuronal tumor entity. *Brain Pathol.* 2019;29(1):53–62.
 33. Stichel D, Schrimpf D, Casalini B, et al. Routine RNA sequencing of formalin-fixed paraffin-embedded specimens in neuropathology diagnostics identifies diagnostically and therapeutically relevant gene fusions. *Acta Neuropathol.* 2019;138(5):827–835.
 34. Burel-Vandenbos F, Pierron G, Thomas C, et al. A polyphenotypic malignant paediatric brain tumour presenting a MN1-PATZ1 fusion, no epigenetic similarities with CNS High-Grade Neuroepithelial Tumour with MN1 Alteration (CNS HGNM1) and related to PATZ1-fused sarcomas. *Neuropathol Appl Neurobiol.* 2020;46(5):506–509.
 35. Sievers P, Sill M, Schrimpf D, et al. A subset of pediatric-type thalamic gliomas share a distinct DNA methylation profile, H3K27me3 loss and frequent alteration of EGFR. *Neuro Oncol.* 2021;23(1):34–43.
 36. Tesileanu CMS, Dirven L, Wijnenga MMJ, et al. Survival of diffuse astrocytic glioma, IDH1/2-wildtype, with molecular features of glioblastoma, WHO grade IV: a confirmation of the cIMPACT-NOW criteria. *Neuro Oncol.* 2020;22(4):515–523.
 37. Clarke M, Mackay A, Ismer B, et al. Infant high-grade gliomas comprise multiple subgroups characterized by novel targetable gene fusions and favorable outcomes. *Cancer Discov.* 2020;10(7):942–963.
 38. Guerreiro Stucklin AS, Ryall S, Fukuoka K, et al. Alterations in ALK/ROS1/NTRK/MET drive a group of infantile hemispheric gliomas. *Nat Commun.* 2019;10(1):4343.
 39. Pajtler KW, Witt H, Sill M, et al. Molecular classification of ependymal tumors across all CNS compartments, histopathological grades, and age groups. *Cancer Cell.* 2015;27(5):728–743.
 40. Ellison DW, Kocak M, Figarella-Branger D, et al. Histopathological grading of pediatric ependymoma: reproducibility and clinical relevance in European trial cohorts. *J Negat Results Biomed.* 2011;10:7.
 41. Vera-Bolanos E, Aldape K, Yuan Y, et al. Clinical course and progression-free survival of adult intracranial and spinal ependymoma patients. *Neuro Oncol.* 2015;17(3):440–447.
 42. Taylor MD, Northcott PA, Korshunov A, et al. Molecular subgroups of medulloblastoma: the current consensus. *Acta Neuropathol.* 2012;123(4):465–472.
 43. Schwalbe EC, Lindsey JC, Nakjang S, et al. Novel molecular subgroups for clinical classification and outcome prediction in childhood medulloblastoma: a cohort study. *Lancet Oncol.* 2017;18(7):958–971.
 44. Cavalli FMG, Remke M, Rampasek L, et al. Intertumoral heterogeneity within medulloblastoma subgroups. *Cancer Cell.* 2017;31(6):737–754. e6.

45. Sharma T, Schwalbe EC, Williamson D, et al. Second-generation molecular subgrouping of medulloblastoma: an international meta-analysis of Group 3 and Group 4 subtypes. *Acta Neuropathol.* 2019;138(2):309–326.
46. Kumar R, Liu APY, Northcott PA. Medulloblastoma genomics in the modern molecular era. *Brain Pathol.* 2020;30(3):679–690.
47. Hovestadt V, Ayrault O, Swartling FJ, Robinson GW, Pfister SM, Northcott PA. Medulloblastomics revisited: biological and clinical insights from thousands of patients. *Nat Rev Cancer.* 2020;20(1):42–56.
48. Robinson GW, Rudneva VA, Buchhalter I, et al. Risk-adapted therapy for young children with medulloblastoma (SJYC07): therapeutic and molecular outcomes from a multicentre, phase 2 trial. *Lancet Oncol.* 2018;19(6):768–784.
49. Mynarek M, von Hoff K, Pietsch T, et al. Nonmetastatic medulloblastoma of early childhood: results from the prospective clinical trial HIT-2000 and an extended validation cohort. *J Clin Oncol.* 2020;38(18):2028–2040.
50. Robinson GW, Gajjar A. Genomics paves the way for better infant medulloblastoma therapy. *J Clin Oncol.* 2020;38(18):2010–2013.
51. Eberhart CG, Kepner JL, Goldthwaite PT, et al. Histopathologic grading of medulloblastomas: a Pediatric Oncology Group study. *Cancer.* 2002;94(2):552–560.
52. McManamy CS, Lamont JM, Taylor RE, et al. Morphophenotypic variation predicts clinical behavior in childhood non-desmoplastic medulloblastomas. *J Neuropathol Exp Neurol.* 2003;62(6):627–632.
53. McManamy CS, Pears J, Weston CL, et al. Nodule formation and desmoplasia in medulloblastomas-defining the nodular/desmoplastic variant and its biological behavior. *Brain Pathol.* 2007;17(2):151–164.
54. Massimino M, Antonelli M, Gandola L, et al. Histological variants of medulloblastoma are the most powerful clinical prognostic indicators. *Pediatr Blood Cancer.* 2013;60(2):210–216.
55. Ellison DW, Dalton J, Kocak M, et al. Medulloblastoma: clinicopathological correlates of SHH, WNT, and non-SHH/WNT molecular subgroups. *Acta Neuropathol.* 2011;121(3):381–396.
56. Thomas C, Wefers A, Bens S, et al. Desmoplastic myxoid tumor, SMARCB1-mutant: clinical, histopathological and molecular characterization of a pineal region tumor encountered in adolescents and adults. *Acta Neuropathol.* 2020;139(2):277–286.
57. Lee JC, Mazor T, Lao R, et al. Recurrent KBTBD4 small in-frame insertions and absence of DROSHA deletion or DICER1 mutation differentiate pineal parenchymal tumor of intermediate differentiation (PPTID) from pineoblastoma. *Acta Neuropathol.* 2019;137(5):851–854.
58. Pfaff E, Aichmüller C, Sill M, et al. Molecular subgrouping of primary pineal parenchymal tumors reveals distinct subtypes correlated with clinical parameters and genetic alterations. *Acta Neuropathol.* 2020;139(2):243–257.
59. Li BK, Vasiljevic A, Dufour C, et al. Pineoblastoma segregates into molecular sub-groups with distinct clinico-pathologic features: a Rare Brain Tumor Consortium registry study. *Acta Neuropathol.* 2020;139(2):223–241.
60. Vaubel RA, Chen SG, Raleigh DR, et al. Meningiomas with rhabdoid features lacking other histologic features of malignancy: a study of 44 cases and review of the literature. *J Neuropathol Exp Neurol.* 2016;75(1):44–52.
61. Sahm F, Schrimpf D, Olar A, et al. TERT promoter mutations and risk of recurrence in meningioma. *J Natl Cancer Inst.* 2016;108(5):1–4.
62. Sievers P, Hielscher T, Schrimpf D, et al. CDKN2A/B homozygous deletion is associated with early recurrence in meningiomas. *Acta Neuropathol.* 2020;140(3):409–413.
63. Gauchotte G, Peyre M, Pouget C, et al. Prognostic value of histopathological features and loss of H3K27me3 immunolabeling in anaplastic meningioma: a multicenter retrospective study. *J Neuropathol Exp Neurol.* 2020;79(7):754–762.
64. Nassiri F, Mamatjan Y, Suppiah S, et al. DNA methylation profiling to predict recurrence risk in meningioma: development and validation of a nomogram to optimize clinical management. *Neuro Oncol.* 2019;21(7):901–910.
65. Müller HL, Merchant TE, Warmuth-Metz M, Martinez-Barbera JP, Puget S. Craniopharyngioma. *Nat Rev Dis Primers.* 2019;5(1):75.
66. Holsken A, Sill M, Merkle J, et al. Adamantinomatous and papillary craniopharyngiomas are characterized by distinct epigenomic as well as mutational and transcriptomic profiles. *Acta Neuropathol Commun.* 2016;4:20.
67. Mete O, Lopes MB, Asa SL. Spindle cell oncocytomas and granular cell tumors of the pituitary are variants of pituitaryoma. *Am J Surg Pathol.* 2013;37(11):1694–1699.
68. El Hussein S, Vincentelli C. Pituitaryoma: review of commonalities and distinguishing features among TTF-1 positive tumors of the central nervous system. *Ann Diagn Pathol.* 2017;29:57–61.
69. Rindi G, Klimstra DS, Abedi-Ardekani B, et al. A common classification framework for neuroendocrine neoplasms: an International Agency for Research on Cancer (IARC) and World Health Organization (WHO) expert consensus proposal. *Mod Pathol.* 2018;31(12):1770–1786.