

# UC San Diego

## UC San Diego Previously Published Works

### Title

Adjuvant treatment with tumor-targeting Salmonella typhimurium A1-R reduces recurrence and increases survival after liver metastasis resection in an orthotopic nude mouse model

### Permalink

<https://escholarship.org/uc/item/6899c9xp>

### Journal

Oncotarget, 6(39)

### ISSN

1949-2553

### Authors

Murakami, Takashi  
Hiroshima, Yukihiro  
Zhao, Ming  
[et al.](#)

### Publication Date

2015-12-08

### DOI

10.18632/oncotarget.6170

### Copyright Information

This work is made available under the terms of a Creative Commons Attribution License, available at <https://creativecommons.org/licenses/by/4.0/>

Peer reviewed

# Adjuvant treatment with tumor-targeting *Salmonella typhimurium* A1-R reduces recurrence and increases survival after liver metastasis resection in an orthotopic nude mouse model

Takashi Murakami<sup>1,2,3</sup>, Yukihiro Hiroshima<sup>1,2,3</sup>, Ming Zhao<sup>1</sup>, Yong Zhang<sup>1</sup>, Takashi Chishima<sup>3</sup>, Kuniya Tanaka<sup>3</sup>, Michael Bouvet<sup>2</sup>, Itaru Endo<sup>3</sup> and Robert M. Hoffman<sup>1,2</sup>

<sup>1</sup> AntiCancer, Inc., San Diego, California, USA

<sup>2</sup> Department of Surgery, University of California, San Diego, California, USA

<sup>3</sup> Department of Gastroenterological Surgery, Graduate School of Medicine, Yokohama City University, Japan

**Correspondence to:** Robert M. Hoffman, **email:** all@anticancer.com

**Keywords:** liver metastasis, colon cancer, RFP, nude mice, orthotopic models

**Received:** August 07, 2015

**Accepted:** October 04, 2015

**Published:** October 19, 2015

This is an open-access article distributed under the terms of the Creative Commons Attribution License, which permits unrestricted use, distribution, and reproduction in any medium, provided the original author and source are credited.

## ABSTRACT

**Colon cancer liver metastasis is often the lethal aspect of this disease. Well-isolated metastases are candidates for surgical resection, but recurrence is common. Better adjuvant treatment is therefore needed to reduce or prevent recurrence. In the present study, HT-29 human colon cancer cells expressing red fluorescent protein (RFP) were used to establish liver metastases in nude mice. Mice with a single liver metastasis were randomized into bright-light surgery (BLS) or the combination of BLS and adjuvant treatment with tumor-targeting *S. typhimurium* A1-R. Residual tumor fluorescence after BLS was clearly visualized at high magnification by fluorescence imaging. Adjuvant treatment with *S. typhimurium* A1-R was highly effective to increase survival and disease-free survival after BLS of liver metastasis. The results suggest the future clinical potential of adjuvant *S. typhimurium* A1-R treatment after liver metastasis resection.**

## INTRODUCTION

Colon cancer liver metastasis is often the lethal aspect of this disease [1]. Well-isolated metastases are candidates for surgical resection, but recurrence is common [2]. Better adjuvant treatment is therefore needed to reduce or prevent recurrence.

Bacterial therapy of cancer has a long history [3-5]. The bacteria, now known as *Streptococcus pyogenes* [3-5], was found in cancer patients who had remission and was used for therapy in the late 19<sup>th</sup> and early 20<sup>th</sup> centuries [3-5], especially under William B. Coley.

Hoption Cann et al. [5] compared patient outcome with early bacterial treatment to modern chemotherapy and found the 10-year survival rates were comparable [5]. Beginning in the middle of the last century, bacteria were used for cancer therapy in animal models [6-18]. *Bifidobacterium* [18] and *Clostridium* [19], obligate anaerobes which replicate only in necrotic areas of

tumors, had anti-tumor efficacy in mouse tumor models. Spores of *Clostridium novyi*, without its lethal toxin (*C. novyi* no toxin [NT]), were recently used in a patient with leiomyosarcoma causing a metastatic lesion to regress after intratumor administration [20].

*Salmonella typhimurium* (*S. typhimurium*) is a facultative anaerobe, which in contrast to obligate anaerobes, allows growth in the viable regions as well as necrotic regions of tumors [20]. *S. typhimurium*-VNP20009, with *msbB* and *purI* mutations, was found safe in a Phase I clinical trial of metastatic melanoma and renal carcinoma [21].

The tumor-targeting *S. typhimurium* A1-R strain developed by our laboratory has higher tumor colonization efficacy and antitumor efficacy than *S. typhimurium*-VNP20009 [22], possibly because it has fewer attenuation mutations. *S. typhimurium* A1-R is auxotrophic for Leu-Arg, which prevents it from mounting a continuous infection in normal tissues. *S. typhimurium* A1-R was able

to inhibit or eradicate primary and metastatic tumors as monotherapy in nude mouse models of prostate [23, 24], breast [25-27], lung [28, 29], pancreatic [30-34], ovarian [35, 36] stomach [37], and cervical cancer [38], as well as sarcoma [39-41] and glioma [42,43], all of which are highly aggressive tumor models.

The present report demonstrates adjuvant treatment efficacy of *S. typhimurium* A1-R after bright-light surgery (BLS) of liver metastasis.

## RESULTS AND DISCUSSION

### BLS cannot resect the entire liver metastasis

Residual tumor fluorescence was detected on the surgical resection bed after BLS of HT-29-RFP liver metastasis (Figure 1). There was no significant difference in residual tumor area between the control group ( $0.237 \pm 0.094 \text{ mm}^2$ ) and BLS group ( $0.250 \pm 0.120 \text{ mm}^2$ ).

### Adjuvant treatment with *S. typhimurium* A1-R increases survival after BLS

Adjuvant *S. typhimurium* A1-R treatment after BLS significantly prolonged both disease-free ( $P = 0.005$ ; Figure 2A) and overall survival ( $P = 0.010$ ; Figure 2B).

Liver metastasis of colon cancer is the major lethal event of this disease. In many cases, diffuse liver metastasis is inoperable. However, isolated liver metastasis provides an opportunity for resection, but

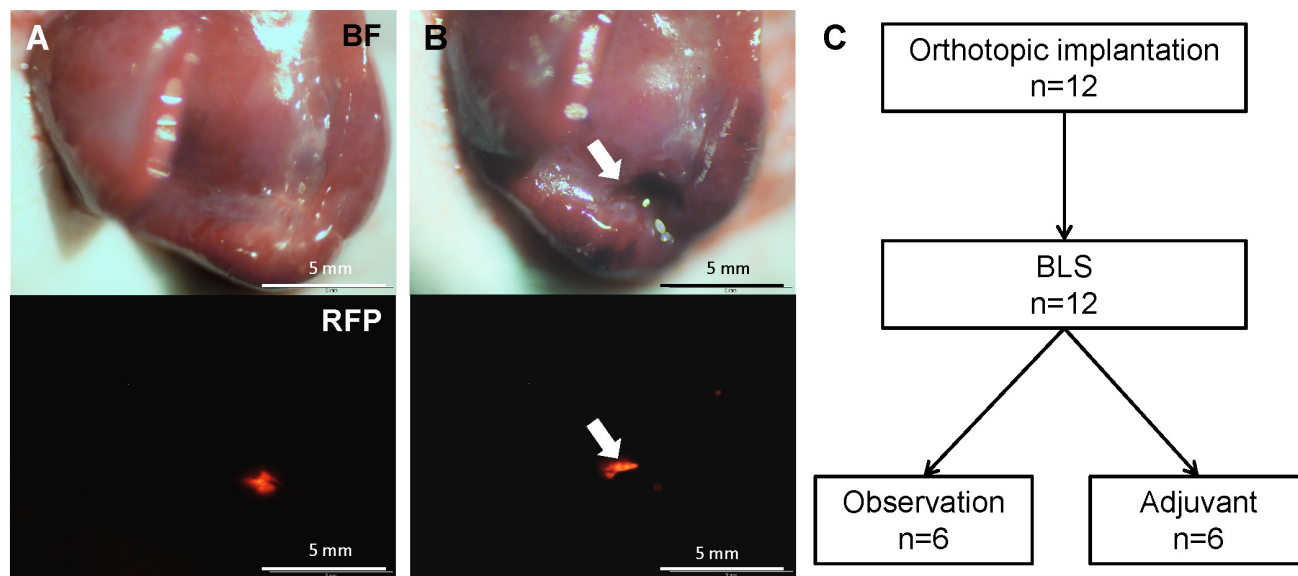
BLS very often results in residual cancer cells. The present report demonstrates that *S. typhimurium* A1-R can eradicate sufficient residual cancer cells after BLS to significantly increase disease-free survival and overall survival. Future experiments will also use *S. typhimurium* A1-R as neoadjuvant chemotherapy to convert inoperable tumors to those that are resectable.

In a recent study, we found that *Salmonella typhimurium* A1-R was active as monotherapy on liver metastasis in the orthotopic HT-29 mouse model. The results of that study demonstrated the potential of *S. typhimurium* A1-R targeting of liver metastasis [44].

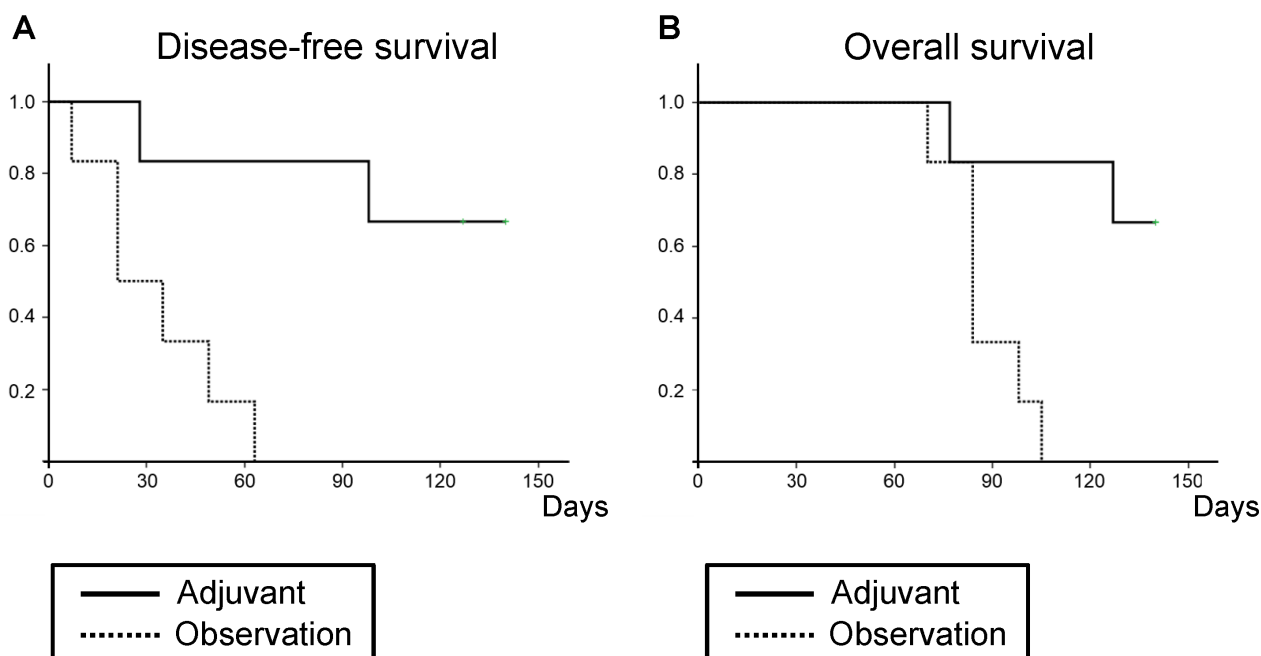
The recurrence rate after liver metastasis resection is high, up to 75% [1, 2, 45]. Adjuvant therapy for colon cancer liver metastasis is usually based on 5-fluorouracil and oxaliplatin and it is not highly effective [1, 2, 45]. Therefore, novel approaches are necessary to improve adjuvant therapy of colon cancer liver metastasis.

The present study indicated that *S. typhimurium* A1-R can be curative as adjuvant treatment for liver metastasis. Clinical trials of *S. typhimurium* A1-R for adjuvant therapy of patients with liver metastasis resection would have high potential.

Previously developed concepts and strategies of highly selective tumor targeting [46-51] can take advantage of bacterial targeting of tumors, including tissue-selective therapy which focuses on unique properties of normal and tumor tissues [46, 51]. *S. typhimurium* A1-R can possibly overcome de-differentiation of a tumor leading to resistance to targeted chemotherapy, where the targeted protein or pathway may no longer be expressed [51], since *S. typhimurium* A1-R does not depend on



**Figure 1: Efficacy of BLS alone on liver metastasis.** A. Tumor fluorescence was clearly detected before BLS. B. Tumor fluorescence still remained on the surgical resection bed (arrows) after BLS. C. Schematic diagram of the experimental design for adjuvant *S. typhimurium* A1-R treatment. Twelve mice were randomized into observation (n=6) and adjuvant groups (n=6). BF=bright field.



**Figure 2: Efficacy of adjuvant *S. typhimurium* A1-R treatment on disease-free and overall survival according to the Kaplan-Meier method.** Mice in the adjuvant group had reduced recurrence (A) and increased survival (B) compared to those in the untreated control group.

such targets [46, 48]. *S. typhimurium* A1-R may also be effectively combined with teratogens which could selectively affect cancer cells that are dedifferentiated [47]. Since *S. typhimurium* A1-R can decoy quiescent cancer cells to begin to cycle, *S. typhimurium* A1-R could be effectively combined with agents which selectively target proliferating cancer cells [49], where normal cells are protected by agents which induce wild type p53 [50].

## MATERIALS AND METHODS

### Mice

Athymic *nu/nu* nude mice (AntiCancer Inc., San Diego, CA), 4–6 weeks old, were used in this study. All animal studies were conducted with an AntiCancer Institutional Animal Care and Use Committee (IACUC)-protocol specifically approved for this study and in accordance with the principals and procedures outlined in the National Institute of Health Guide for the Care and Use of Animals under Assurance Number A3873-1. In order to minimize any suffering of the animals, anesthesia and analgesics were used for all surgical experiments. Animals were anesthetized by subcutaneous injection of a 0.02 ml solution of 20 mg/kg ketamine, 15.2 mg/kg xylazine, and 0.48 mg/kg acepromazine maleate. The response of animals during surgery was monitored to ensure adequate depth of anesthesia. The animals were observed on a daily basis and humanely sacrificed by CO<sub>2</sub>

inhalation when they met the following humane endpoint criteria: prostration, significant body weight loss, difficulty breathing, rotational motion and body temperature drop. The use of animals was necessary to evaluate *S. typhimurium* A1-R efficacy *in vivo*. Animals were housed with no more than 5 per cage. Animals were housed in a barrier facility on a high efficiency particulate arrestance (HEPA)-filtered rack under standard conditions of 12-hour light/dark cycles. The animals were fed an autoclaved laboratory rodent diet.

### Cell line

The human colon cancer cell line HT-29, [52, 53] was maintained in DMEM (Irvine Scientific, Irvine, CA) supplemented with heat-inactivated 10% fetal bovine serum (FBS) (Gemini Biologic Products, Calabasas, CA), 2 mM glutamine, 100 units/ml penicillin, 100 µg/ml streptomycin, and 0.25 µg/ml amphotericin B (Life Technologies, Inc., Grand Island, NY). The cells were incubated at 37°C in 5% CO<sub>2</sub>.

### Establishment of RFP-labeled HT29

The pDsRed-2 vector (Clontech Laboratories Inc., Palo Alto, CA) expressing RFP and the neomycin-resistance gene was used to stably transfect HT-29 cells to express RFP. For RFP gene transfection, 25% confluent HT-29 cells were incubated with a mixture of retroviral

supernatants of PT67-RFP packaging cells and DMEM for 24 h. Fresh medium was replenished at this time, and cells were allowed to grow in the absence of retrovirus for 12 h. This procedure was repeated until high levels of RFP expression were achieved. Cells were then harvested with trypsin-EDTA and subcultured into selective medium that contained G418 (200 µg/ml) (Geneticin, Invitrogen Corp., Carlsbad, CA). The level of G418 was increased to 2,000 µg/ml stepwise. Clones expressing high levels of RFP were isolated and were amplified and transferred using conventional culture methods. High RFP-expression clones were isolated in the absence of G418 for 10 passages to select for stable expression of RFP [52, 54, 55].

### Preparation of *S. typhimurium* A1-R

GFP-expressing *S. typhimurium* A1-R bacteria (AntiCancer Inc.) were grown overnight on LB medium (Fisher Sci., Hanover Park, IL, USA) and then diluted 1:10 in LB medium. Bacteria were harvested at late-log phase, washed with PBS, and then diluted in PBS [23].

### Initial establishment of liver metastases

HT-29-RFP cells were harvested by trypsinization and washed twice with serum-free medium. Cells ( $5 \times 10^5$  in 50 µl serum-free medium with 50% Matrigel) were injected into the superior and inferior pole of the spleen in mice. Three weeks after injection, liver metastases were established.

### Surgical orthotopic implantation of liver metastasis

Established liver metastases were resected and cut into blocks (3 mm<sup>3</sup>). A single tumor fragment was orthotopically implanted into the left lobe of the liver in other nude mice. Four weeks later, liver metastasis was observed in the implanted site.

### Efficacy for adjuvant *S. typhimurium* A1-R treatment on liver metastasis after resection

Four weeks after orthotopic implantation to the liver, the liver metastasis was resected along the tumor margin under bright light. Twelve mice treated with standard bright-light surgery (BLS) were randomized into 2 groups: a control group (n=6) and an *S. typhimurium* A1-R adjuvant group (n=6). *S. typhimurium* A1-R ( $5 \times 10^7$  CFU/body, iv, weekly, 3 weeks) was administered to the mice as adjuvant treatment beginning one week after BLS. Tumor fluorescence was visualized with the OV100 variable magnification small animal fluorescence imaging

system (Olympus Corp., Tokyo, Japan) before and right after BLS. Recurrence was monitored by weekly non-invasive tumor fluorescence evaluation with the LT-9900 Illumatool (Lighttools Research, Encinitas, CA, USA) until the end of the experiment.

### Statistical analysis

SPSS statistics (version 21.0) was used for all statistical analyses (IBM, New York City, NY, USA). Survival curves were constructed using the Kaplan–Meier method and compared using the log-rank test. A probability value of  $P < 0.05$  was considered statistically significant.

### ACKNOWLEDGEMENT

This study was supported by National Cancer Institute grant CA132971 and CA142669 and JSPS KAKENHI grant 26830081 to YH, 26462070 to IE and 24592009 to KT. The funders had no role in study design, data collection and analysis, decision to publish, or preparation of the manuscript.

### CONFLICTS OF INTEREST

M.Z. and Y.Z. are employees of AntiCancer Inc. T.M. and R.M.H. are unsalaried associates of AntiCancer Inc. There are no other competing financial interests.

### Dedication

This paper is dedicated to the memory of A. R. Moossa, M.D.

### REFERENCES

1. Rothbarth J, van de Velde CJ. Treatment of liver metastases of colorectal cancer. *Ann Oncol* 2005;16 Suppl 2:ii144-49.
2. de Jong MC, Pulitano C, Ribero D, Strub J, Mentha G, Schulick RD, Choti MA, Aldrighetti L, Capussotti L, Pawlik TM. Rates and patterns of recurrence following curative intent surgery for colorectal liver metastasis: an international multi-institutional analysis of 1669 patients. *Ann Surg* 2009;250:440-448.
3. William Coley. Available at: [https://en.wikipedia.org/wiki/William\\_Coley](https://en.wikipedia.org/wiki/William_Coley) [last accessed 12 December 2013].
4. Forbes NS. Engineering the perfect (bacterial) cancer therapy. *Nat Rev Cancer* 2010;10:785-94.
5. Hoption Cann SA, van Netten JP, van Netten C. Dr William Coley and tumour regression: a place in history or in the future. *Postgrad Med J* 2003;79:672-80.
6. Richardson MA, Ramirez T, Russell NC, Moye LA. Coley toxins immunotherapy: a retrospective review. *Altern Ther*



Health Med 1999;5(3):42-7.

7. Gericke D, Engelbart K. Oncolysis by clostridia. II. Experiments on a tumor spectrum with a variety of clostridia in combination with heavy metal. *Cancer Res* 1964; 24:217-21.
8. Moese JR, Moese G. Oncolysis by clostridia. I. Activity of *Clostridium butyricum* (M-55) and other nonpathogenic clostridia against the Ehrlich carcinoma. *Cancer Res* 1964; 24:212-6.
9. Thiele EH, Arison RN, Boxer GE. Oncolysis by clostridia. III. Effects of clostridia and chemotherapeutic agents on rodent tumors. *Cancer Res* 1964; 24:222-33.
10. Kohwi Y, Imai K, Tamura Z, Hashimoto Y. Antitumor effect of *Bifidobacterium infantis* in mice. *Gan* 1978; 69:613-8.
11. Kimura NT, Taniguchi S, Aoki K, Baba T. Selective localization and growth of *Bifidobacterium bifidum* in mouse tumors following intravenous administration. *Cancer Res* 1980; 40:2061-8.
12. Fox ME, Lemmon MJ, Mauchline ML, Davis TO, Giaccia AJ, Minton NP, Brown JM. Anaerobic bacteria as a delivery system for cancer gene therapy: in vitro activation of 5-fluorocytosine by genetically engineered clostridia. *Gene Ther* 1996; 3:173-8.
13. Lemmon MJ, Van Zijl P, Fox ME, Mauchline ML, Giaccia AJ, Minton NP, Brown JM. Anaerobic bacteria as a gene delivery system that is controlled by the tumor microenvironment. *Gene Ther* 1997; 4:791-6.
14. Brown JM, Giaccia AJ. The unique physiology of solid tumors: opportunities (and problems) for cancer therapy. *Cancer Res* 1998; 58:1408-16.
15. Low KB, Ittensohn M, Le T, Platt J, Sodi S, Amoss M, Ash O, Carmichael E, Chakraborty A, Fischer J, Lin SL, Luo X, Miller SI, Zheng L, King I, Pawelek JM, Bermudes D. Lipid A mutant *Salmonella* with suppressed virulence and TNF $\alpha$  induction retain tumor-targeting in vivo. *Nat Biotechnol* 1999; 17:37-41.
16. Clairmont C, Lee KC, Pike J, Ittensohn M, Low KB, Pawelek J, Bermudes D, Brecher SM, Margitich D, Turnier J, Li Z, Luo X, King I, Zheng LM. Biodistribution and genetic stability of the novel antitumor agent VNP20009, a genetically modified strain of *Salmonella typhimurium*. *J Infect Dis* 2000; 181:1996-2002.
17. Sznol M, Lin SL, Bermudes D, Zheng LM, King I. Use of preferentially replicating bacteria for the treatment of cancer. *J Clin Invest* 2000; 105:1027-30.
18. Yazawa K, Fujimori M, Nakamura T, Sasaki T, Amano J, Kano Y, Taniguchi S. *Bifidobacterium longum* as a delivery system for gene therapy of chemically induced rat mammary tumors. *Breast Cancer Res Treat* 2001; 66:165-70.
19. Dang LH, Bettgowda C, Huso DL, Kinzler KW, Vogelstein B. Combination bacteriolytic therapy for the treatment of experimental tumors. *Proc Natl Acad Sci USA* 2001; 98:15155-60.
20. Roberts NJ, Zhang L, Janku F, Collins A, Bai RY, Staedtke V, Rusk AW, Tung D, Miller M, Roix J, Khanna KV, Murthy R, Benjamin RS, et al. Intratumoral injection of *Clostridium novyi-NT* spores induces antitumor responses. *Sci Transl Med* 2014; 6:249ra111.
21. Toso JF, Gill VJ, Hwu P, Marincola FM, Restifo NP, Schwartzentruber DJ, Sherry RM, Topalian SL, Yang JC, Stock F, Freezer LJ, Morton KE, Seipp C, et al. Phase I study of the intravenous administration of attenuated *Salmonella typhimurium* to patients with metastatic melanoma. *J Clin Oncol* 2002; 20:142-52.
22. Zhang Y, Zhang N, Zhao M, Hoffman RM. Comparison of the selective targeting efficacy of *Salmonella typhimurium* A1-R and VNP20009 on the Lewis lung carcinoma in nude mice. *Oncotarget* 2015; 6:14625-31.
23. Zhao M, Yang M, Li XM, Jiang P, Baranov E, Li S, Xu M, Penman S, Hoffman RM. Tumor-targeting bacterial therapy with amino acid auxotrophs of GFP-expressing *Salmonella typhimurium*. *Proc Natl Acad Sci USA* 2005; 102:755-60.
24. Zhao M, Geller J, Ma H, Yang M, Penman S, Hoffman RM. Monotherapy with a tumor-targeting mutant of *Salmonella typhimurium* cures orthotopic metastatic mouse models of human prostate cancer. *Proc Natl Acad Sci USA* 2007; 104:10170-4.
25. Zhao M, Yang M, Ma H, Li X, Tan X, Li S, Yang Z, Hoffman RM. Targeted therapy with a *Salmonella typhimurium* leucine-arginine auxotroph cures orthotopic human breast tumors in nude mice. *Cancer Res* 2006; 66:7647-52.
26. Zhang Y, Tome Y, Suetsugu A, Zhang L, Zhang N, Hoffman RM, Zhao M. Determination of the optimal route of administration of *Salmonella typhimurium* A1-R to target breast cancer in nude mice. *Anticancer Res* 2012; 32:2501-8.
27. Zhang Y, Miwa S, Zhang N, Hoffman RM, Zhao M. Tumor-targeting *Salmonella typhimurium* A1-R arrests growth of breast-cancer brain metastasis. *Oncotarget* 2015; 6:2615-22.
28. Uchugonova A, Zhao M, Zhang Y, Weinigel M, König K, Hoffman RM. Cancer-cell killing by engineered *Salmonella* imaged by multiphoton tomography in live mice. *Anticancer Res* 2012; 32:4331-7.
29. Liu F, Zhang L, Hoffman RM, Zhao M. Vessel destruction by tumor-targeting *Salmonella typhimurium* A1-R is enhanced by high tumor vascularity. *Cell Cycle* 2010; 9:4518-24.
30. Nagakura C, Hayashi K, Zhao M, Yamauchi K, Yamamoto N, Tsuchiya H, Tomita K, Bouvet M, Hoffman RM. Efficacy of a genetically-modified *Salmonella typhimurium* in an orthotopic human pancreatic cancer in nude mice. *Anticancer Res* 2009; 29:1873-8.
31. Yam C, Zhao M, Hayashi K, Ma H, Kishimoto H, McElroy M, Bouvet M, Hoffman RM. Monotherapy with

- a tumor-targeting mutant of *S. typhimurium* inhibits liver metastasis in a mouse model of pancreatic cancer. *J Surg Res* 2010;164:248-55.
32. Hiroshima Y, Zhao M, Zhang Y, Maawy A, Hassanein MK, Uehara F, Miwa S, Yano S, Momiyama M, Suetsugu A, Chishima T, Tanaka K, Bouvet M, Endo I, Hoffman RM. Comparison of efficacy of *Salmonella typhimurium* A1-R and chemotherapy on stem-like and non-stem human pancreatic cancer cells. *Cell Cycle* 2013;12:2774-80.
  33. Hiroshima Y, Zhao M, Maawy A, Zhang Y, Katz MH, Fleming JB, Uehara F, Miwa S, Yano S, Momiyama M, Suetsugu A, Chishima T, Tanaka K, Bouvet M, Endo I, Hoffman RM. Efficacy of *Salmonella typhimurium* A1-R versus chemotherapy on a pancreatic cancer patient-derived orthotopic xenograft (PDOX). *J Cell Biochem* 2014;115:1254-61.
  34. Hiroshima Y, Zhang Y, Murakami T, Maawy AA, Miwa S, Yamamoto M, Yano S, Sato S, Momiyama M, Mori R, Matsuyama R, Chishima T, Tanaka K, et al. Efficacy of tumor-targeting *Salmonella typhimurium* A1-R in combination with anti-angiogenesis therapy on a pancreatic cancer patient-derived orthotopic xenograft (PDOX) and cell line mouse models. *Oncotarget* 2014;5:12346-57.
  35. Matsumoto Y, Miwa S, Zhang Y, Hiroshima Y, Yano S, Uehara F, Yamamoto M, Toneri M, Bouvet M, Matsubara H, Hoffman RM, Zhao M. Efficacy of tumor-targeting *Salmonella typhimurium* A1-R on nude mouse models of metastatic and disseminated human ovarian cancer. *J Cell Biochem* 2014; 115:1996-2003.
  36. Matsumoto Y, Miwa S, Zhang Y, Zhao M, Yano S, Uehara F, Yamamoto M, Hiroshima Y, Toneri M, Bouvet M, Matsubara H, Tsuchiya H, Hoffman RM. Intraperitoneal administration of tumor-targeting *Salmonella typhimurium* A1-R inhibits disseminated human ovarian cancer and extends survival in nude mice. *Oncotarget* 2015;6:11369-77.
  37. Yano S, Zhang Y, Zhao M, Hiroshima Y, Miwa S, Uehara F, Kishimoto H, Tazawa H, Bouvet M, Fujiwara T, and Hoffman RM. Tumor-targeting *Salmonella typhimurium* A1-R decoys quiescent cancer cells to cycle as visualized by FUCCI imaging and become sensitive to chemotherapy. *Cell Cycle* 2014;13:3958-63.
  38. Hiroshima Y, Zhang Y, Zhao M, Zhang N, Murakami T, Maawy A, Mii S, Uehara F, Yamamoto M, Miwa S, Yano S, Momiyama M, Mori R, et al. Tumor-targeting *Salmonella typhimurium* A1-R in combination with Trastuzumab eradicates HER-2-positive cervical cancer cells in patient-derived mouse models. *PLoS One* 2015;10: e0120358.
  39. Hayashi K, Zhao M, Yamauchi K, Yamamoto N, Tsuchiya H, Tomita K, Hoffman RM. Cancer metastasis directly eradicated by targeted therapy with a modified *Salmonella typhimurium*. *J Cell Biochem* 2009;106:992-8.
  40. Hayashi K, Zhao M, Yamauchi K, Yamamoto N, Tsuchiya H, Tomita K, Kishimoto H, Bouvet M, Hoffman RM. Systemic targeting of primary bone tumor and lung metastasis of high-grade osteosarcoma in nude mice with a tumor-selective strain of *Salmonella typhimurium*. *Cell Cycle* 2009; 8:870-5.
  41. Miwa S, Zhang Y, Baek K-E, Uehara F, Yano S, Yamamoto M, Hiroshima Y, Matsumoto Y, Kimura H, Hayashi K, Yamamoto N, Tsuchiya H, Hoffman RM, Zhao M. Inhibition of spontaneous and experimental lung metastasis of soft-tissue sarcoma by tumor-targeting *Salmonella typhimurium* A1-R. *Oncotarget* 2014; 5:12849-61.
  42. Kimura H, Zhang L, Zhao M, Hayashi K, Tsuchiya H, Tomita K, Bouvet M, Wessels J, Hoffman RM. Targeted therapy of spinal cord glioma with a genetically-modified *Salmonella typhimurium*. *Cell Proliferation* 2010;43:41-8.
  43. Momiyama M, Zhao M, Kimura H, Tran B, Chishima T, Bouvet M, Endo I, Hoffman RM. Inhibition and eradication of human glioma with tumor-targeting *Salmonella typhimurium* in an orthotopic nude-mouse model. *Cell Cycle* 2012;11:628-32.
  44. Murakami T, Hiroshima Y, Zhao M, Zhang Y, Chishima T, Tanaka K, Bouvet M, Endo I, Hoffman RM. Therapeutic efficacy of tumor-targeting *Salmonella typhimurium* A1-R on human colorectal cancer liver metastasis in orthotopic nude-mouse models. *Oncotarget*. 2015; doi: 10.18632/oncotarget.5187 [Epub ahead of print].
  45. Zhang W, Song T. The progress in adjuvant therapy after curative resection of liver metastasis from colorectal cancer. *Drug Disc Therap* 2014;8:194-200.
  46. Blagosklonny MV. Matching targets for selective cancer therapy. *Drug Discov Today* 2003;8:1104-7.
  47. Blagosklonny MV. Teratogens as anti-cancer drugs. *Cell Cycle* 2005;4:1518-21.
  48. Blagosklonny MV. Treatment with inhibitors of caspases, that are substrates of drug transporters, selectively permits chemotherapy-induced apoptosis in multidrug-resistant cells but protects normal cells. *Leukemia* 2001;15:936-41.
  49. Blagosklonny MV. Target for cancer therapy: proliferating cells or stem cells. *Leukemia* 2006;20:385-91.
  50. Apontes P, Leontieva OV, Demidenko ZN, Li F, Blagosklonny MV. Exploring long-term protection of normal human fibroblasts and epithelial cells from chemotherapy in cell culture. *Oncotarget* 2011;2:222-33.
  51. Blagosklonny MV. Tissue-selective therapy of cancer. *Br J Cancer* 2003;89:1147-51.
  52. Maawy AA, Hiroshima Y, Zhang Y, Luiken GA, Hoffman RM, Bouvet M. Polyethylene glycol (PEG) linked to near infrared (NIR) dyes conjugated to chimeric anti-carcinoembryonic antigen (CEA) antibody enhances imaging of liver metastases in a nude-mouse model of human colon cancer. *PLoS One* 2014;9:e97965.
  53. Ma H, Li X, Yang Z, Okuno S, Kawaguchi T, Yagi S, Bouvet M, Hoffman RM. High antimetastatic efficacy of MEN4901/T-0128, a novel camptothecin carboxymethyl dextran conjugate. *J Surg Res* 2011;171:684-

90.

54. Katz MH, Takimoto S, Spivack D, Moossa AR, Hoffman RM, Bouvet M. A novel red fluorescent protein orthotopic pancreatic cancer model for the preclinical evaluation of chemotherapeutics. *J Surg Res* 2003;113:151-60.
55. Metildi CA, Kaushal S, Snyder CS, Hoffman RM, Bouvet M. Fluorescence-guided surgery of human colon cancer increases complete resection resulting in cures in an orthotopic nude mouse model. *J Surg Res* 2013;179:87-93.