

UC Berkeley

UC Berkeley Previously Published Works

Title

MicroED-Informed 4D-STEM of MOFs for Carbon Capture

Permalink

<https://escholarship.org/uc/item/68c9704q>

Journal

Microscopy and Microanalysis, 30(Supplement_1)

ISSN

1431-9276

Authors

Karstens, Sarah L

Dods, Matthew N

Saha, Ambarneil

et al.

Publication Date

2024-07-24

DOI

10.1093/mam/ozae044.922

Copyright Information

This work is made available under the terms of a Creative Commons Attribution License, available at <https://creativecommons.org/licenses/by/4.0/>

Peer reviewed

MicroED-informed 4D-STEM of MOFs for Carbon Capture

Sarah L. Karstens¹ Matthew N. Dods², Ambarneil Saha³, Karen C. Bustillo³, Peter Ercius³, Jeffrey R. Long^{1,2} and Andrew M. Minor^{3,4*}

¹ Department of Chemistry, University of California, Berkeley, CA, United States.

² Department of Chemical and Biomolecular Engineering, University of California, Berkeley, CA, United States.

³ National Center for Electron Microscopy, Molecular Foundry, Lawrence Berkeley National Laboratory, Berkeley, CA, United States.

⁴ Department of Materials Science and Engineering, University of California, Berkeley, CA, United States.

* Corresponding author: aminor@lbl.gov

Metal–organic frameworks (MOFs) are cage-like structures composed of metal ions linked together by organic ligands. The metals and linkers in a MOF can be altered based on the desired functionality and structure. The tunable and structurally diverse nature of these materials, coupled with their high porosity and surface areas, make them optimal candidates for gas storage and capture [1]. Amines appended onto the MOF increase its selectivity for CO₂ from air. In particular, diamine-appended Mg₂dobpdc (dobpdc⁴⁻ = 4,4'-dioxidobiphenyl-3,3'-dicarboxylate) has the highest gravimetric capacity used for CO₂ capture from air. Structural characterization via single-crystal X-ray diffraction (SC-XRD) performed on an analogous material, diamine-appended Zn₂dobpdc, showed that CO₂ adsorption proceeded via a cooperative mechanism, where the gas inserts into the metal-N bonds. Given that the strength of the metal-amine bond informs the adsorption properties, it is imperative to understand the structure of the material of interest instead of its metal analogue. Attempts at structural characterization of diamine-appended Mg₂dobpdc have been so far unsuccessful because it has not been possible to grow large enough single crystals for X-ray diffraction [2].

Recently, protocols using transmission electron microscopy (TEM) to solve micro- and nanosized crystals have been developed in the community [3,4,5]. In microcrystal electron diffraction (MicroED), the crystal is rotated continuously during data collection and diffraction patterns are collected as a movie by a fast camera [6]. In this study, MicroED was employed to solve the structure of several variants of diamine-appended Mg₂dobpdc. This information was then used in tandem with scanning nanodiffraction or “4D-STEM” [7] in a low electron dose mode [8] to visualize heterogeneity within a crystal as well as between different crystals. We suggest that this heterogeneity affects the performance of the MOF in terms of its ability to adsorb gas. This idea is explored by in situ activation of the framework during data collection, allowing for structural comparison of an ensemble of CO₂-dosed and activated, or “bare” frameworks. The combined workflow of MicroED and 4D-STEM allows us to understand many performance-related aspects of a previously inaccessible structure.

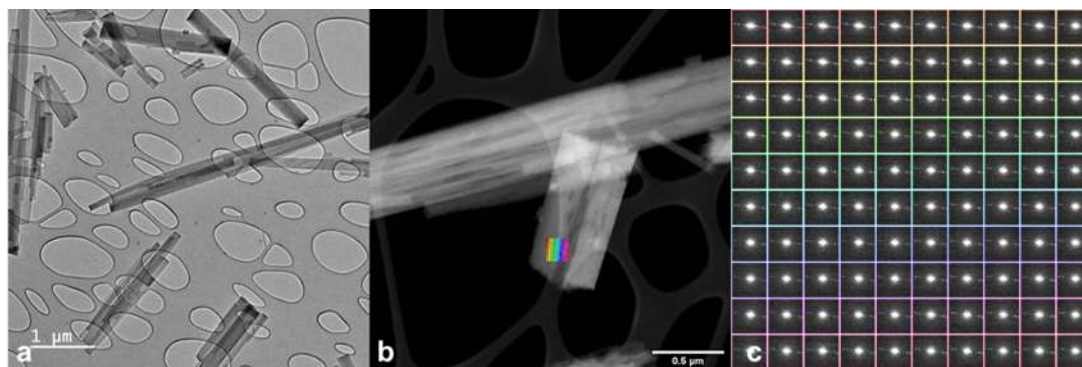


Fig. 1. (a) BFTEM (b) HAADF-STEM and (c) 4D-STEM of a 49x49 nm region (shown overlaid in color on b) of diamine-appended Mg₂dobpdc. Although neighboring diffraction patterns (taken 4.9 nm apart) confirm that the crystal domain sizes are large enough for MicroED, mosaicity is present in the crystal.

References:

1. X Gong, K Gnanasekaran, Z Chen, L Robison, M Wasson, K Bentz, S Cohen, O Farha, N Gianneschi, *J. Am. Chem. Soc.* **142** (2020), p. 17224. <https://doi.org/10.1021/jacs.0c08773>
2. R Siegelman, T McDonald, M Gonzalez, J Martell, P Milner, J Mason, A Berger, A Bhowan, J Long, *J. Am. Chem. Soc.* **139** (2017), p. 10530. <https://doi.org/10.1021/jacs.0c08773>
3. U Kolb, T Gorelik, C Kuebel, M Otten, D Hubert. *Ultramicroscopy* **107** (2007), p. 507-513. <https://doi.org/10.1016/j.ultramic.2006.10.007>
4. J Jiang, J Jorda, J Yu, L Baumes, E Mugnaioli, M Diaz-Cabanias, U Kolb, A Corma, *Science* **333** (2011), p. 1131-1134. <https://doi.org/10.1126/science.1208652>
5. B Nannenga, D Shi, A Leslie, T Gonen, *Nat. Methods* **11** (2014), p. 927-930. <https://doi.org/10.1038/nmeth.3043>
6. T Yang, T Willhammar, H Xu, X Zou, Z Huang, *Nat. Protoc.* **17** (2022), p. 2389. <https://doi.org/10.1038/s41596-022-00720-8>
7. C Ophus, *Microsc. Microanal.* **25** (2019), p. 563. <https://doi.org/10.1017/S1431927619000497>
8. K Bustillo, S Zeltmann, M Chen, J Donohue, J Ciston, C Ophus, A Minor, *Acc. Chem. Res.* **54** (2021), p. 2543-2551.
9. This work was supported through the Electron Microscopy of Soft Matter Program, Office of Science, Office of Basic Energy Sciences, Materials Sciences and Engineering Division of the U.S. Department of Energy (DOE) under Contract No. DE-AC02-05CH11231. This work was also supported by STROBE: A National Science Foundation Science and Technology Center under Grant No. DMR 1548924. Work at the Molecular Foundry was supported by the Office of Science, Office of Basic Energy Sciences, of the U.S. DOE under Contract No. DE-AC02-05CH11231.