

UC Davis

UC Davis Previously Published Works

Title

In silico assessment of genetic variation in KCNA5 reveals multiple mechanisms of human atrial arrhythmogenesis.

Permalink

<https://escholarship.org/uc/item/68p9v2zw>

Journal

PLoS Computational Biology, 13(6)

Authors

Colman, Michael

Ni, Haibo

Liang, Bo

et al.

Publication Date

2017-06-01

DOI

10.1371/journal.pcbi.1005587

Copyright Information

This work is made available under the terms of a Creative Commons Attribution License, available at <https://creativecommons.org/licenses/by/4.0/>

Peer reviewed

RESEARCH ARTICLE

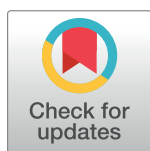
In silico assessment of genetic variation in *KCNA5* reveals multiple mechanisms of human atrial arrhythmogenesis

Michael A. Colman^{1,2} , Haibo Ni¹ , Bo Liang³, Nicole Schmitt³, Henggui Zhang^{1,4} *

1 Biological Physics Group, School of Physics and Astronomy, University of Manchester, Manchester, United Kingdom, **2** School of Biomedical Sciences, Faculty of Biological Sciences, University of Leeds, Leeds, United Kingdom, **3** Department of Biomedical Sciences, Faculty of Health and Medical Sciences, University of Copenhagen, Copenhagen, Denmark, **4** School of Computer Science and Technology, Harbin Institute of Technology, Harbin, China

 These authors contributed equally to this work.

* henggui.zhang@manchester.ac.uk



 OPEN ACCESS

Citation: Colman MA, Ni H, Liang B, Schmitt N, Zhang H (2017) *In silico* assessment of genetic variation in *KCNA5* reveals multiple mechanisms of human atrial arrhythmogenesis. *PLoS Comput Biol* 13(6): e1005587. <https://doi.org/10.1371/journal.pcbi.1005587>

Editor: Alexander V Panfilov, Universiteit Gent, BELGIUM

Received: February 10, 2017

Accepted: May 22, 2017

Published: June 16, 2017

Copyright: © 2017 Colman et al. This is an open access article distributed under the terms of the [Creative Commons Attribution License](https://creativecommons.org/licenses/by/4.0/), which permits unrestricted use, distribution, and reproduction in any medium, provided the original author and source are credited.

Data Availability Statement: All relevant data are within the paper and its Supporting Information files.

Funding: This study was supported by project grants from EPSRC (EP/J00958X/1—HZ), MRC (MR/M014967/1—MAC), NSFC (6117909), BHF (FS/1415/30533), and University of Manchester, UK. BL and NS were supported by the Danish National Research Foundation Centre for Cardiac Arrhythmia. The funders had no role in study

Abstract

A recent experimental study investigating patients with lone atrial fibrillation identified six novel mutations in the *KCNA5* gene. The mutants exhibited both gain- and loss-of-function of the atrial specific ultra-rapid delayed rectifier K⁺ current, I_{Kur} . The aim of this study is to elucidate and quantify the functional impact of these *KCNA5* mutations on atrial electrical activity. A multi-scale model of the human atria was updated to incorporate detailed experimental data on I_{Kur} from both wild-type and mutants. The effects of the mutations on human atrial action potential and rate dependence were investigated at the cellular level. In tissue, we assessed the effects of the mutations on the vulnerability to unidirectional conduction patterns and dynamics of re-entrant excitation waves. Gain-of-function mutations shortened the action potential duration in single cells, and stabilised and accelerated re-entrant excitation in tissue. Loss-of-function mutations had heterogeneous effects on action potential duration and promoted early-after-depolarisations following beta-adrenergic stimulation. In the tissue model, loss-of-function mutations facilitated breakdown of excitation waves at more physiological excitation rates than the wild-type, and the generation of early-after-depolarisations promoted unidirectional patterns of excitation. Gain- and loss-of-function I_{Kur} mutations produced multiple mechanisms of atrial arrhythmogenesis, with significant differences between the two groups of mutations. This study provides new insights into understanding the mechanisms by which mutant I_{Kur} contributes to atrial arrhythmias. In addition, as I_{Kur} is an atrial-specific channel and a number of I_{Kur} -selective blockers have been developed as anti-AF agents, this study also helps to understand some contradictory results on both pro- and anti-arrhythmic effects of blocking I_{Kur} .

Author summary

In a recent study, six mutations resulting in either gain-of-function or loss-of-function in the ultra-rapid delayed rectifier potassium current I_{Kur} , were identified to be associated

design, data collection and analysis, decision to publish, or preparation of the manuscript.

Competing interests: The authors have declared that no competing interests exist.

with atrial fibrillation (AF). However, the causative link between the mutant I_{Kur} (either gain- or loss-of-function) and AF genesis, especially the difference and similarity between the two mutant groups, has not been elucidated. In our study, we used multiscale computational models to investigate the mechanism of arrhythmogenesis mediated by the two groups of mutations. The results suggest that the gain-of-function mutations shortened atrial action potential duration, stabilised and accelerated re-entrant excitation waves in tissue; the loss-of-function mutation promoted early-after-depolarisations following beta-adrenergic stimulation and thus wave breaks in tissue. We show these two groups of mutants carrying I_{Kur} produced multiple mechanisms of atrial arrhythmogenesis, with significant differences between the two groups. Our study provides new insights into understanding the mechanisms by which mutant I_{Kur} contributes to atrial arrhythmias. In addition, as I_{Kur} is an atrial-specific channel and a number of I_{Kur} -selective blockers have been developed as anti-AF agents, this study also helps to understand some contradictory results on both pro- and anti-arrhythmic effects of blocking I_{Kur} .

Introduction

Mutations in genes encoding the proteins involved in cardiac electrophysiology can result in alterations of the electrical action potential (AP) and tissue excitability, which may affect cardiac output and predispose to arrhythmias, such as atrial fibrillation (AF) [1,2].

AF, the world's most common cardiac arrhythmia [3], is characterised by complex and rapid electrical activation of the upper chambers of the heart, impairing cardiac function and significantly increasing the risk of heart failure, stroke and death [4]. Electrical activity driving AF is conjectured to be underlain by ectopic pacing (abnormal spontaneous activity), re-entrant excitation (in the form of scroll waves or wavelets), or an interplay between both [5,6].

AF can arise within the context of other heart conditions, such as heart failure, and is in general associated with large-scale and multi-faceted electrical and structural remodelling [7–9], but may also occur in the presence of individual genetic mutations in the otherwise normal heart (referred to as 'lone' or 'familial' AF). Understanding the pro-arrhythmic role of genetic variation is an essential part of the wider effort to understand and treat the cardiac disorder.

The ultra-rapid potassium current (I_{Kur}) plays an important role in repolarisation of the atrial action potential in human and other animals [2,10]. Alterations to the biophysical properties of I_{Kur} are associated with incidences of AF [2,8]. A recent study analysing patients with lone AF has identified six mutations in the human *KCNA5* gene, which encodes the Kv1.5 channel carrying I_{Kur} [2]. Of the six mutations, three resulted in a gain-of-function (D322H, A305T, E48G) and three in a loss-of-function (P488S, Y155C, D469E) of the current. All mutations resulted in alterations of the channel's maximum current density and kinetics [2], which is likely to manifest as modifications to AP morphology and duration.

AP morphology and duration are critical factors determining complex electrical wave dynamics in tissue, such as those observed during AF. Previous studies have demonstrated that AP duration (APD) abbreviation plays an important role in sustaining re-entrant circuits [11–13]. Moreover, large gradients in AP morphology and duration across different regions of the atria can promote wave-breaks, leading to unidirectional conduction patterns that can develop into self-perpetuating re-entrant excitation [13–15]. I_{Kur} is active during the plateau and early repolarisation phase of the human atrial AP, affecting AP morphology and duration and thus providing the potential to perpetuate and facilitate atrial arrhythmias.

Recent experimental and modelling studies have also demonstrated an important role for I_{Kur} in the incidence of early-after-depolarisations (EADs) during beta-adrenergic stimulation (sympathetic nervous response) in isolated cells [16,17]. After-depolarisations are generally linked with arrhythmogenic mechanisms [18–20] and thus mutations which affect I_{Kur} dynamics may also mediate arrhythmogenesis through the promotion of EADs.

Diversity in I_{Kur} kinetics associated with genetic variation of *KCNA5* therefore presents the possibility to facilitate atrial arrhythmogenesis through different mechanisms. Determining these mechanisms is the aim of the present study. This is achieved through integrating experimental data on diversity in I_{Kur} kinetics into a multi-scale computational model of the human atria, used to elucidate the functional impact of the six identified mutations on electrical activity at the cellular and tissue scale. In order to exclude possible model-dependent results and conclusion, three contemporary mathematical models of human atrial electrophysiology [13,17,21] were implemented in this study.

Results

Gain-of-function mutations

All gain-of-function mutations had a marked effect on AP morphology and duration (Fig 1A, detailed description in S1 Text). In lone AF, the notch and plateau potentials and APD₃₀ were reduced, and APD₉₀ was in general shortened; the APD restitution curves were flattened. With the inclusion of chronic AF (cAF) electrical remodelling, all mutations shortened the APD₉₀ in all models (S2 Text).

In simulations using the *Colman et al.* [13] and *Courtemanche et al.* [21] single cell models mapped onto the 3D reconstruction of human atrial anatomy, all three gain-of-function mutations promoted stable, higher frequency re-entrant scroll waves compared to the WT in all models (Fig 1B, Figure A in S3 Text). Re-entry could also be sustained at larger values of the diffusion coefficient (*D*), closer to control, indicating an increased susceptibility to re-entry in the structurally normal atria, or atria with a normal electrical coupling (Table A in S3 Text). cAF remodelling accelerated and thus stabilised re-entrant excitation in all mutations and WT compared to the lone AF condition and in all mutations compared to the WT (Fig 1Bi,ii).

The extent of APD₉₀ variation across electrically heterogeneous regions was in general reduced by these mutations compared to the WT; APD₉₀ variation was also reduced in coupled tissue compared to single cells for all conditions (Fig 1Ci,ii). However, at the heterogeneous junction of crista terminalis/pectinate muscle (CT/PM), the in-tissue APD₉₀ difference between the two regions was only affected by a small degree by the mutations. Correspondingly, the mutations had only a small effect on the width of the vulnerability windows (VWs) under S1S2 pacing, but caused a marked shift to the excitation cycle-lengths of S2 over which the VVs were observed (Fig 1Ciii, S4 Text).

Loss-of-function mutations

Loss-of-function mutations markedly altered AP morphology, but had a less marked and consistent effect on APD₉₀ among the three models: enhanced plateau/dome phase of the AP and thus APD₃₀ was observed in all mutations, but secondary effects on terminal repolarisation led to variations in modulation of APD₉₀ (Fig 2A and discussed further in S1 Text); in different models and mutations, the effects on APD₉₀ ranged from substantial prolongation to slight shortening (Fig 2A). Note that in previous experimental studies, blocking I_{Kur} either resulted in an increase [7] or decrease [22] in APD of human atrial cells depending on the baseline morphology of the atrial AP.

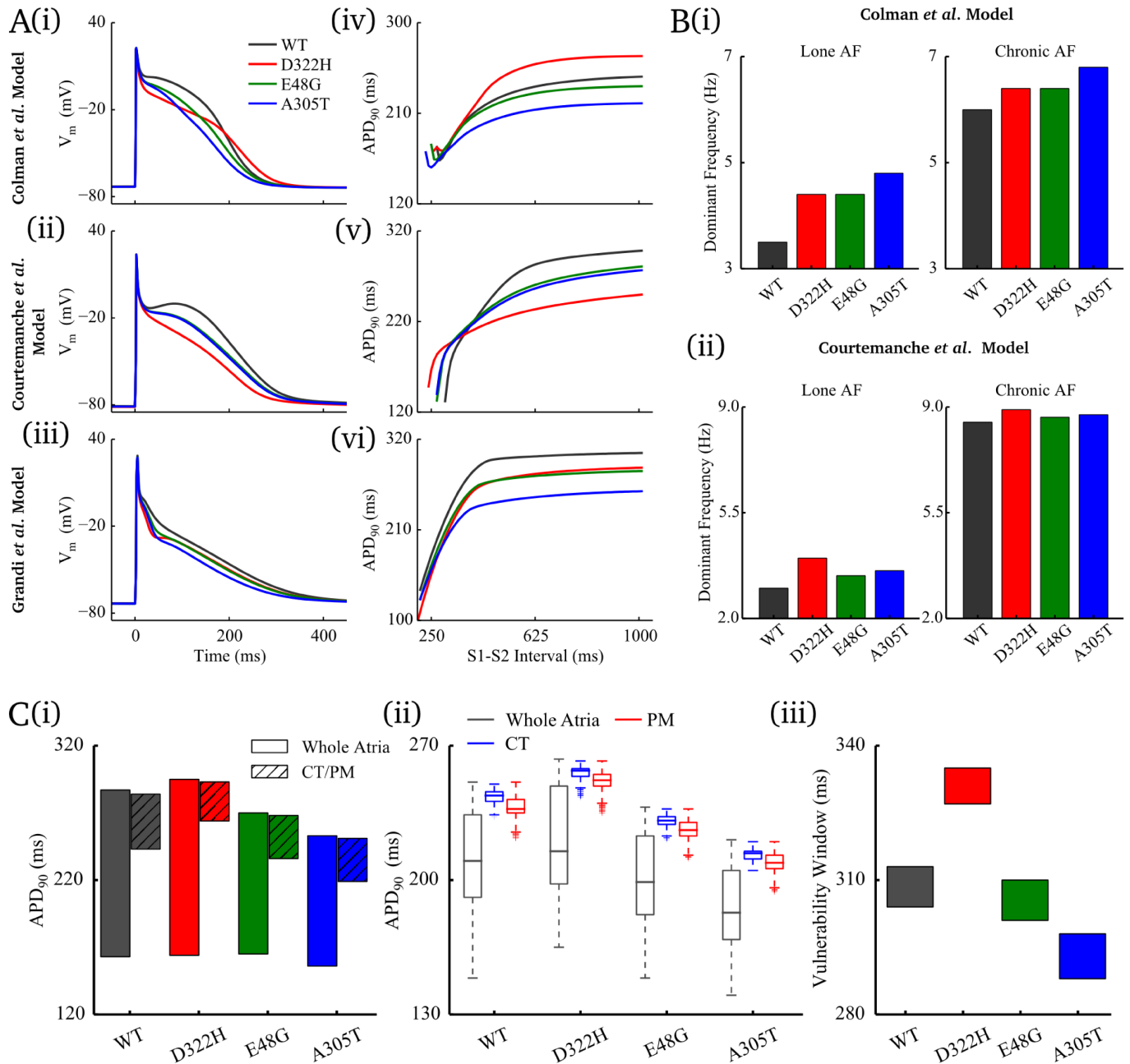


Fig 1. Effects of gain-of-function *KCNA5* mutations. **A** Effects of the mutations on the AP (i-iii) and APD-restitution (iv-vi) properties of human atrial myocytes elicited by updated *Colman et al.* model, *Courtemanche et al.* model and *Grandi et al.* model. **B** Effects of the mutations on the maximum sustained dominant frequency of excitation waves under the lone AF and chronic AF conditions using (i) *Colman et al.* model and (ii) *Courtemanche et al.* model. **C** Effects of the mutations on APD heterogeneity and tissue vulnerability window at the CT/PM junction in *Colman et al.* model. APD distribution among regional cells of whole atria and CT/PM for (i) isolated single cells and (ii) in coupled tissue; the APD distribution in tissue is shown in boxplots with outlier limits of 1.5×IQR (interquartile range). (iii) Temporal vulnerability window to propagation wave break at the CT/PM junction.

<https://doi.org/10.1371/journal.pcbi.1005587.g001>

Under cAF conditions, consistent effects were observed between the individual mutations in the three models (S2 Text): all mutations elevated AP-plateau and prolonged APD₉₀.

In 3D organ-scale simulations, the mutations presented inconsistent effects on the stability of re-entrant excitation: D469E and Y155C had very little effect on the dominant frequency in

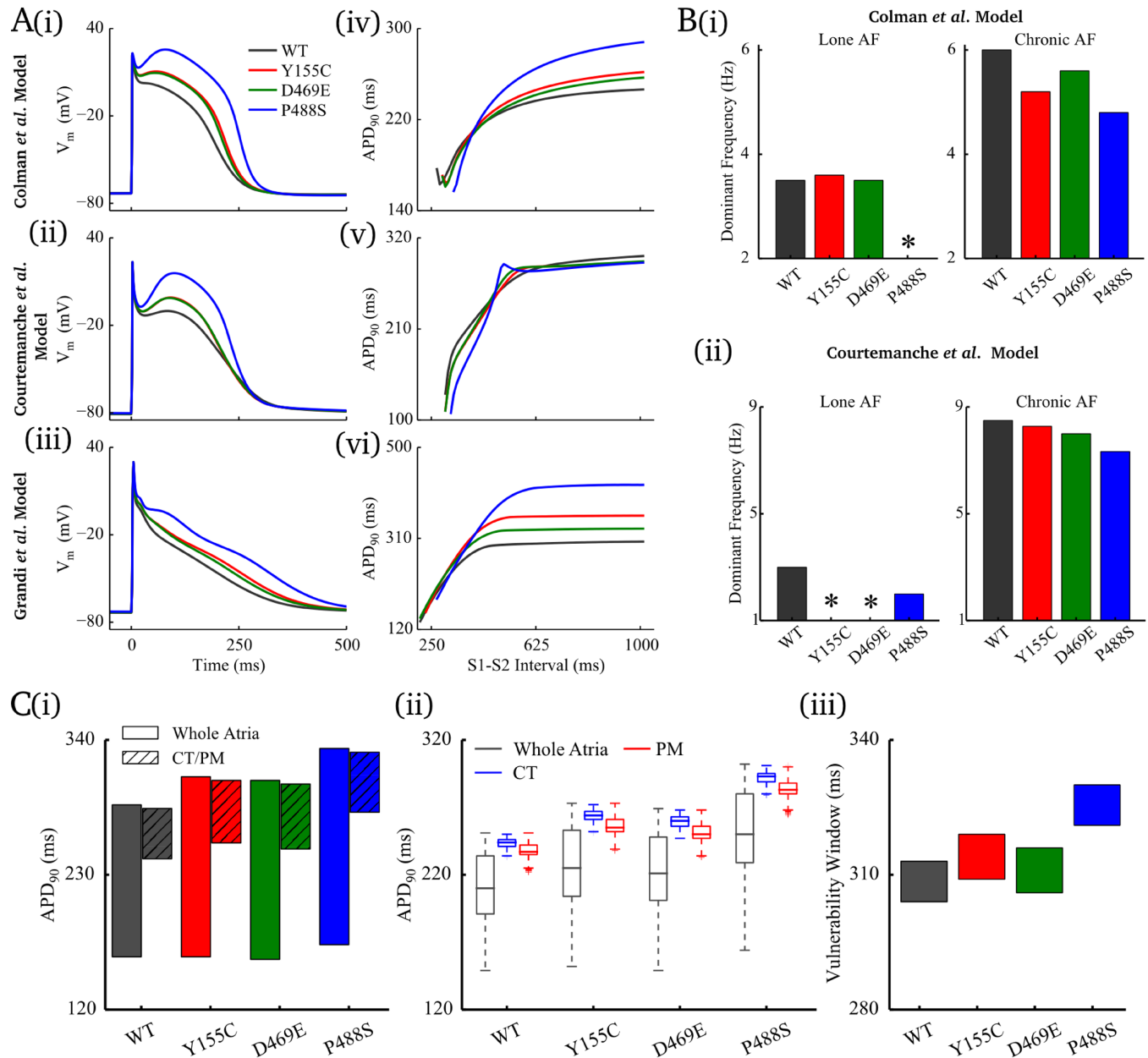


Fig 2. Effects of loss-of-function mutations. **A** Effects of the mutations on AP (i-iii) and APD-restitution (iv-vi) properties of human atrial myocytes elicited by updated *Colman et al.* model, *Courtemanche et al.* model and *Grandi et al.* model. **B** Effects of the mutations on the maximum sustained dominant frequency of excitation waves in the lone AF and chronic AF conditions using (i) *Colman et al.* model and (ii) *Courtemanche et al.* model. **C** Effects of *KCNA5* mutations on APD heterogeneity and tissue vulnerability window at the CT/PM junction in *Colman et al.* model. APD distribution among regional cells of whole atria and CT/PM for in (i) isolated single cells and (ii) in coupled tissue; the APD distribution in tissue is shown in boxplots with outlier limits of 1.5×IQR (interquartile range). (iii) Temporal vulnerability window to wave propagation break at the CT/PM junction. In panel B, * indicates cases in which re-entrant waves could not be sustained.

<https://doi.org/10.1371/journal.pcbi.1005587.g002>

the *Colman et al.* model (Fig 2Bi), whereas re-entry could not be sustained in P488S (transient re-entry had a lifetime of less than a second, even in the severe remodelling condition), but in the *Courtemanche et al.* model, the presence of alternans with D469E and Y155C destabilised the re-entrant waves, leading to termination of rotors (Fig 2Bii, Figure B in S3 Text).

Analogously to gain-of-function mutations, loss-of-function mutations increased APD₉₀ heterogeneity across the atria, but had a relatively small effect on the heterogeneity at the CT/PM junction and correspondingly the size of the VWs, whereas the shift in temporal window of S2 over which wave breaks were observed (shifted to longer values) was more substantial (Fig 2C, S4 Text).

Beta-adrenergic stimulation

The application of Isoprenaline (ISO, 1μM), replicating beta-adrenergic stimulation, had no arrhythmogenic impact on myocytes with gain-of-function mutations or WT I_{Kur} (Figure A in S5 Text). However, for the loss-of-function mutants pronounced EADs were observed in simulations using the *Grandi et al.* model (Fig 3A, Figure B in S5 Text). In simulations across regional cell models, the CT was more susceptible to the development of EADs than the PM and RA (Fig 3A) due to its larger expression of I_{CaL} [13,14]: more substantial EADs were observed in the CT for Y155C and P488S, whereas D469E led to EADs in the CT but none in the PM or RA.

Implications of observed EADs on tissue excitation patterns were evaluated in a 1D strand of human atrial cell models. In these simulations, substantial EADs were observed (Fig 3B). The increased susceptibility of the CT to EADs compared to the surrounding atria (PM, RA) was also observed. Using a 1D strand model of the CT and PMs only, EADs in the CT (for the case of D469E) could not cause a premature propagating excitation wave (*i.e.*, focal activity) into the adjacent PMs or RA (which did not exhibit EADs) under either rapid or slow S1 pacing.

An S1S2 pacing protocol was used to evaluate the effect of EAD-mediated APD prolongation on the VW at the heterogeneous CT/PM junction. For D469E plus ISO, a VW with a substantial width (313 ms) and an upper limit at a long cycle length (689 ms) (Fig 3B) was observed—significantly larger than WT or VWs computed in the absence of EADs. VWs of a similar size were observed in all cases of heterogeneous EAD production resulting from a heterogeneous application of ISO (D469E at the CT/PM junction; non-uniform ISO distributions for loss-of-function mutations).

1D tissue simulations including a spontaneously active sinoatrial node (SAN) with various regional and ISO configurations (Fig 3C) indicated that production of EADs in the CT could interrupt conduction patterns of excitation emanating from the SAN (Fig 3C): significant EADs at both exit pathways from the SAN to the CT caused “skipped beats” through bi-directional block; EADs in only one pathway (non-uniform ISO distribution; short pathway to the PM) resulted in unidirectional conduction block. Applied focal pacing was therefore not necessary to induce potentially arrhythmic conduction patterns.

Discussion

In this study, the impact of six mutations in *KCNA5* on human atrial electrical function was investigated *in silico*, which elucidates and clarifies the arrhythmogenic effect of the six identified *KCNA5* mutations, demonstrating a causal link between the mutations and incidence of arrhythmia—a link which is distinctly different for the two groups of mutations. The opposing effects on the AP due to gain- and loss- of-function mutations, and their respective mechanistic pathways to induction of arrhythmia, indicate that pharmacological intervention to treat the condition may need to be considered specifically for the genotype and the resulting phenotype. The presented results have implications that can be extrapolated beyond the specific mutations, providing general insight into the role of I_{Kur} kinetics in atrial electrical function, further to previous modelling [15,23–25] or experimental [26–28] studies, which primarily have focused on anti-arrhythmic properties of I_{Kur} block/down-regulation alone.

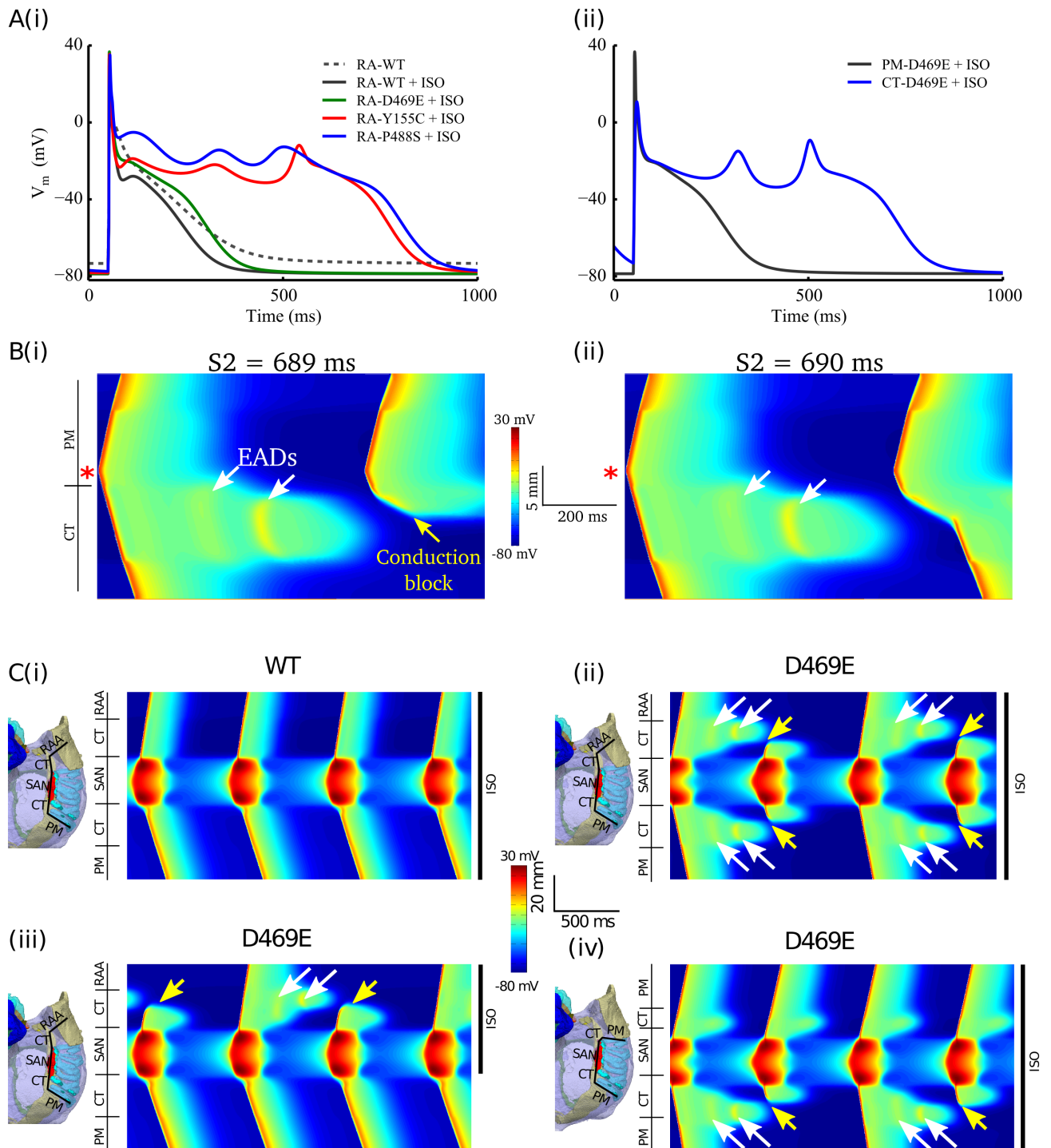


Fig 3. *KCNA5* loss-of-function mutations induced EADs following the beta-adrenergic stimulation. **A(i)** In the presence of ISO, EADs were produced by Y155C and P488S, but not in WT or D469E in RA; **(ii)** EADs were induced by D469E in CT but not in PM. **B** Under uniform application of ISO in a 1D strand model with D469E, EADs in the CT but not PM induced conduction block at an $S2$ of 689 ms **(i)** and success at 690 ms **(ii)**. **C** 1D conduction patterns under mutations and application of ISO in various configurations. On the left of each panel is a breakdown of the regions in the 1D model and an illustration of the anatomical conduction pathway to which they correspond; on the right is the regions of tissue to which ISO was applied. **(i)** Regular conduction pattern under WT and uniform ISO application; **(ii)** Under uniform application of ISO, D469E led to alternating bidirectional conduction block due to EADs in the CT; **(iii)** D469E and non-uniform ISO can lead to unidirectional conduction block, resulting from EADs in the CT regions with ISO; **(iv)** Unidirectional block can also be attained through a different pathway to the PM, in which the CT on one side of the SAN is of insufficient extent to develop significant EADs. In the simulations effects of beta-adrenergic stimulation was modelled by simulated application of ISO (1 μ M).

<https://doi.org/10.1371/journal.pcbi.1005587.g003>

Arrhythmia mechanisms of gain-of-function mutations

Gain-of-function mutations promoted the initiation and sustenance of arrhythmic re-entrant excitation through shortening of the action potential duration and therefore excitation wavelength [13].

In single cells, the increased activity of the repolarising current during phase-2 of the AP led to a significant reduction of the plateau potential. In 8 out of 9 cases this directly contributed to shortened terminal repolarisation and refractory period and flattening of the APD restitution curve, resulting in shorter refractory period across the range of pre-pacing cycle lengths and thus promoting sustained re-entry [6]. The exception is D322H in the *Colman et al.* model, which led to APD₉₀ prolongation in single cells (Figure A in [S1 Text](#)). However, even in this condition, with the additional load of electrotonic coupling (which compensates for the loss of terminal repolarising currents I_{Ks} and I_{Kr} —discussed further in [S3 Text](#)), the in-tissue APD was nonetheless shortened at the rapid rates associated with ectopic pacing and re-entry (Figure A in [S3 Text](#)), leading to promotion of sustained re-entry.

Simulations in this study did not highlight a direct mechanism by which these mutations promoted the initiation of re-entry (i.e. the VWs were not increased). However, other studies have demonstrated that the presence of increased fibrotic lesions [29,30] can lead to conduction wave-breaks and the development of re-entry. In these conditions, it is well established that a shortening of the wavelength enhances the probability of a wave-break developing into self-perpetuating re-entry [5,13], and in the present study we have demonstrated that re-entry is stabilised in these mutations once initiated, and that stable re-entrant waves could be sustained in atria with less severe remodelling in the gap-junctions / structure (Table A in [S3 Text](#)). Therefore, AP shortening due to increased activity of I_{Kur} can promote both the initiation and maintenance of re-entry, associated with AF, when combined with other factors (such as ectopic pacing and fibrosis).

Arrhythmia mechanisms of loss-of-function mutations

Loss-of-function mutations enhanced the susceptibility of atrial tissue to the induction of arrhythmia through a positive shift in the cycle lengths over which the VWs were observed and enhanced vulnerability to EADs, but did not promote the sustenance of re-entrant excitation. Enhanced vulnerability to the induction of wave-breaks may be mechanistically linked to the development and subsequent breakdown of re-entry.

In single cell, the loss of repolarising current during phase 2 of the AP elevated the AP-plateau. This could lead directly to a prolongation of the APD₉₀, but through secondary effects on other currents, the APD₉₀ could be unchanged or slightly shortened compared to the WT ([S1 Text](#)). This inconsistency in the modulation of the refractory period led to variable effects on the maintenance of re-entry.

This loss of repolarising current and elevation of the AP plateau also underlies enhanced susceptibility to EADs when combined with ISO: the increased activity of I_{CaL} is no longer counteracted by sufficient repolarising I_{Kur} , leading to the possibility of re-activation of I_{CaL} driving an EAD ([S5 Text](#)). This mechanism has been previously observed in both experimental and modelling studies in which I_{Kur} is pharmacologically blocked [16,17]. Whereas our simulations did not demonstrate focal activity resulting from EADs (consistent with [19,31] which demonstrated that phase 3 EADs, not phase 2 as observed in the present study, are necessary for the development of focal activity), spatially heterogeneous production of EADs led to significant in-tissue APD gradients and substantial VWs.

EADs in the CT were also observed to block excitation originating from the SAN, providing a potential mechanism for the development of re-entry independent of ectopic pacing. Thus,

these mutations can promote the development of asymmetric conduction patterns which are a precursor to re-entry, and promote both the initiation and recurrence of AF, when combined with factors which promote sustained re-entry, such as connexin and structural remodelling or further electrical remodelling. We note that these latter factors are likely necessary to fully account for the incidence of AF in these patients.

The role of I_{Kur} in action potential morphology

Our results indicate a complex role for I_{Kur} kinetics and magnitude in atrial AP morphology, which differed in variant models. Analysis demonstrated that the interplay between the extent of activation of I_{Ks} and I_{Kr} and deactivation kinetics of I_{Kur} determined the dependence of APD_{90} on I_{Kur} . Details are provided in [S1 Text](#), but briefly: elevation or reduction of the AP plateau led to enhanced or reduced activity in I_{Ks} and I_{Kr} , respectively. The impact of these secondary effects is determined by WT AP morphology, the extent of modulation directly by I_{Kur} , the rapidity of I_{Kur} deactivation, and the formulations of I_{Ks} and I_{Kr} themselves, leading to different behaviour in different models and mutations. Due to inter-subject variations and inter-cellular variations from the same patient, this non-linear behaviour may be clinically relevant. Consistency between the models in cAF conditions results from the similar triangular AP morphology exhibited by all models, wherein cAF remodelling dominates AF modulation.

Use of multiple, independent models of human atrial electrophysiology

Over the years, a number of mathematical models have been developed with different formulations for ionic currents as well as intracellular calcium handling system based on different experimental datasets [13,17,21,32]. Consequently these models produce variable electrophysiological properties which represent the significant variations observed experimentally, including three distinct AP profiles in human atrial myocytes [33]. In this study, three contemporary cell models were implemented to ensure that simulation results and conclusions are model-independent. Whereas the major conclusions were drawn from observations common to all models, some specific behaviour did vary among the implemented models and warrants discussion.

Variation between the models and mutations regarding single cell is explained by the analysis of the non-linear role of I_{Kur} in AP morphology ([S1 Text](#)). In this instance, use of multiple models was essential in revealing this property and directly leads to our conclusions regarding inconsistency in loss-of-function mutations modulating stable re-entry.

The genesis of EADs, and consequently the role in generating unidirectional conduction block, was only observed in the *Grandi et al.* cell model. Whereas this behaviour could also be induced in further simulations using the *Nygren et al.* model [34] (Figure C in [S5 Text](#)) it could not be in the *Courtemanche et al.* and *Colman et al.* models ([S5 Text](#)). The authors note that production of EADs due to ISO and a loss of I_{Kur} is experimentally observed [16] and natively reproduced only by the *Grandi et al.* model, and it follows that such activity could result from a loss-in-function mutation as well as a pharmacological blockade. Therefore it is likely that an enhanced susceptibility to EADs due to loss-of-function mutations may be observed clinically and warrants further investigation. Furthermore, our analysis of the effect of EADs on atrial conduction patterns provides general mechanistic insight, beyond that specific to the mutations studied, to the potentially arrhythmic role of EADs.

Clinical relevance

Whereas the present study provides insight into the link between the identified mutations in *KCNA5* and the incidence of AF, I_{Kur} is also of more general interest as a target for AF management: it is atrial specific [2] and thus provides an attractive prospect for pharmacological

intervention because it can be targeted without adverse effects on the ventricles. Despite this, the efficacy of I_{Kur} blockers to terminate AF has been shown to be controversial in modelling [15,24] and experimental [26] studies.

Our results add insight to the on-going discussion: blocking I_{Kur} may help to terminate re-entry, but also increases tissue's vulnerability to AF initiation. Furthermore, dependent on baseline AP morphology, blocking I_{Kur} may shorten the APD, facilitating sustained re-entry. Moreover, for paroxysmal AF of which AP parameters could be unaltered [35], blocking I_{Kur} may result in pro-arrhythmic consequences, such as EADs.

Limitations

Limitations of the cellular and 3D models, as well as experimental data acquisition, are discussed elsewhere [2,13,14]. Here, only limitations associated with the cellular and tissue modelling of these mutations are discussed.

Due to the limited availability of experimental data, in simulations it was assumed that: the kinetic effect of the mutants on I_{Kur} is homogeneous throughout the atria; the mutants do not affect the relative response of I_{Kur} to beta stimulation; and, the mutant variants of I_{Kur} differ from the WT in the same way for both lone and chronic AF. Moreover, we assumed that these mutations do not directly induce structural remodelling including fibrosis/atrial enlargement. Such assumptions require further experimental verifications.

There are multiple confounding factors associated with the complex excitation patterns observed during AF which were not included in the present study in order to isolate the electrical effects of I_{Kur} modifications: (i) the model includes only idealised fibre structure along the main bundles of the CT/BB and PMs—previous studies have demonstrated a significant role of fibres in determining complex excitation patterns [15,36,37]; (ii) there is no inclusion of fibrosis or regional variation in diffusion coefficient—previous studies have demonstrated the important role of fibrosis and heterogeneous conduction velocity in the breakdown on excitation wavefronts [29,30]; (iii) atrial dilation and hypertrophy are not included and these may also promote complex excitation patterns.

Without inclusion of these factors, the complex and multi-wavelet excitation patterns underlying AF would not be expected to arise. However, the electrical mechanism underlying increased vulnerability to sustained arrhythmia is the same in both conditions: namely, shortening of the effective refractory period and consequently excitation wavelength, permitting faster and shorter re-entrant waves to be maintained. It is therefore reasonable to assume that promotion of re-entrant activity compared to control is a good indication for the isolated electrical modulation of vulnerability to complex excitation underlying AF. Moreover, once re-entrant excitation is initiated (i.e. a mother rotor) the additional factors described above will contribute to the breakdown of the excitation waves leading to the complex activity associated with AF.

Single cell models used in the present study are not suited for investigating delayed-after-depolarisations induced by spontaneous calcium release events, which are being increasingly linked to AF triggers [38]. Loss-of-function mutations were associated with increased incidence of EADs, and APD prolongation and EADs are both linked to increased SR loading and probability of spontaneous release events. These phenomena may play an important role in arrhythmia associated with loss-of-function mutations but could not be investigated in the present study.

The human SAN model implemented is not rigorously based on detailed electrophysiological data from human. However, the model was used in the present study to provide an accurate excitation driving force associated with sinus rhythm (i.e. rate and AP magnitude) and is deemed suitable for this purpose due to the faithful reproduction of SAN AP morphology and conduction. Tissue simulations for the SAN were only performed in 1D because extension to

3D requires the inclusion of additional factors determining SAN excitation patterns [39], beyond the scope of this study, which will have a large influence on the potential generation of unidirectional conduction patterns.

Conclusion

Genetic variation in *KCNA5* promoted multiple mechanisms of arrhythmogenesis for both gain- and loss-of-function mutations, pertaining to the development of re-entrant excitation and early-after-depolarisations. Atrial AP morphology was demonstrated to be highly sensitive to I_{Kur} activation kinetics and had a strong impact on tissue dynamics.

Methods

Development of a novel formulation of I_{Kur}

A new formulation of I_{Kur} was incorporated into the *Colman et al.* model based on experimental data from the wild-type (WT) $K_v1.5$ channel [2]. The new formulation of I_{Kur} is as follows:

$$K_{Q10} = 3.52 \tag{1}$$

Activation gate:

$$a_{inf} = \frac{1.0}{1.0 + \exp\left(\frac{V+17.67}{-5.75}\right)} \cdot \frac{1.0}{1.0 + \exp\left(\frac{V+8.45}{-11.51}\right)} \tag{2}$$

$$\tau_a = \left(\frac{45.67}{1.0 + \exp\left(\frac{V+11.23}{11.53}\right)} + 4.27 \right) \left(\frac{0.26}{1.0 + \exp\left(\frac{V+35.87}{-3.88}\right)} + 0.29 \right) \tag{3}$$

$$\tau_a = \tau_a / K_{Q10} \tag{4}$$

$$\frac{da}{dt} = \frac{a_{inf} - a}{\tau_a} \tag{5}$$

Inactivation gate:

$$i_{inf} = \frac{0.52}{1.0 + \exp\left(\frac{V-15.11}{7.57}\right)} + 0.46 \tag{6}$$

$$\tau_i = \frac{2328}{1.0 + \exp\left(\frac{V-9.44}{3.58}\right)} + 1739.14 \tag{7}$$

$$\tau_i = \tau_i / K_{Q10} \tag{8}$$

$$\frac{di}{dt} = \frac{i_{inf} - i}{\tau_i} \tag{9}$$

I_{Kur} current:

$$I_{Kur} = 0.64 \left(4.51 + \frac{1.90}{1.0 + \exp\left(\frac{V-20.52}{-8.27}\right)} \right) a \cdot i \cdot (V - E_K) \tag{10}$$

The new model mediates an explicit dependence of channel conductivity to the membrane voltage. The maximum channel conductance was tuned so that the ratio of maximum current densities of I_{to} (the transient outward potassium current) and I_{Kur} is close to experimental observations [40]. In accordance with a previous study [21], Q10 correction was carried out to account for the difference in the temperature at which the experiments were carried out and physiological conditions. The new formulation of I_{Kur} closely reproduces the kinetics of the current in experimental conditions (Fig 4). Note that the experimental traces of voltage clamp for I_{Kur} show typically two types of activation—fast and slow (Fig 4B)—for different individual isolated single cells. In the new I_{Kur} model, the time constants of activation gate were modelled by the weighted mean of the fast and slow kinetics observed in the raw data set from the study [2], representing the homogenising effects of coupled cells in tissue.

To obtain models of the six *KCNA5*-mutant currents, parameters of channel conductance, activation and inactivation gates were fitted to individual mutation data from [2], whereas the time constants were kept the same with the WT model. The resultant activation, inactivation gates and I-V relationship measured from simulated voltage clamp are presented in Fig 5.

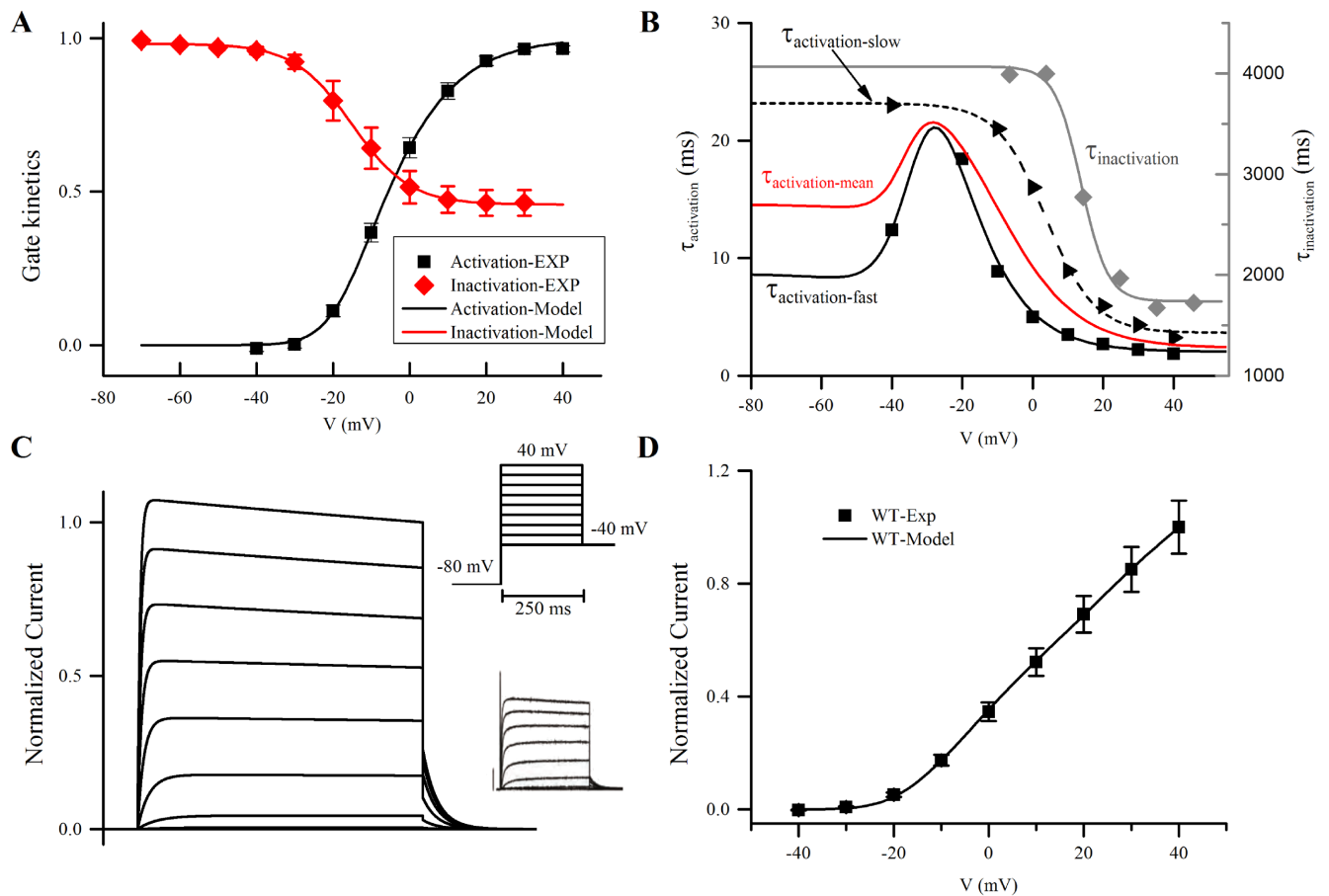


Fig 4. Model representation describing I_{Kur} and simulated voltage clamp. **A** Steady-state activation and inactivation; **B** Time constants; **C** Current trace obtained from a simulated voltage clamp. Inserts: top right—voltage protocol; bottom right—experimental current traces; **D** I-V relationship. In the Fig the simulation data were shown using lines, and experimental data represented by points. Experimental data were taken from [2]; specially, for **B** the time constants were derived from current traces from [2] by fitting the activation phase of the current trace to a mono-exponential equation.

<https://doi.org/10.1371/journal.pcbi.1005587.g004>

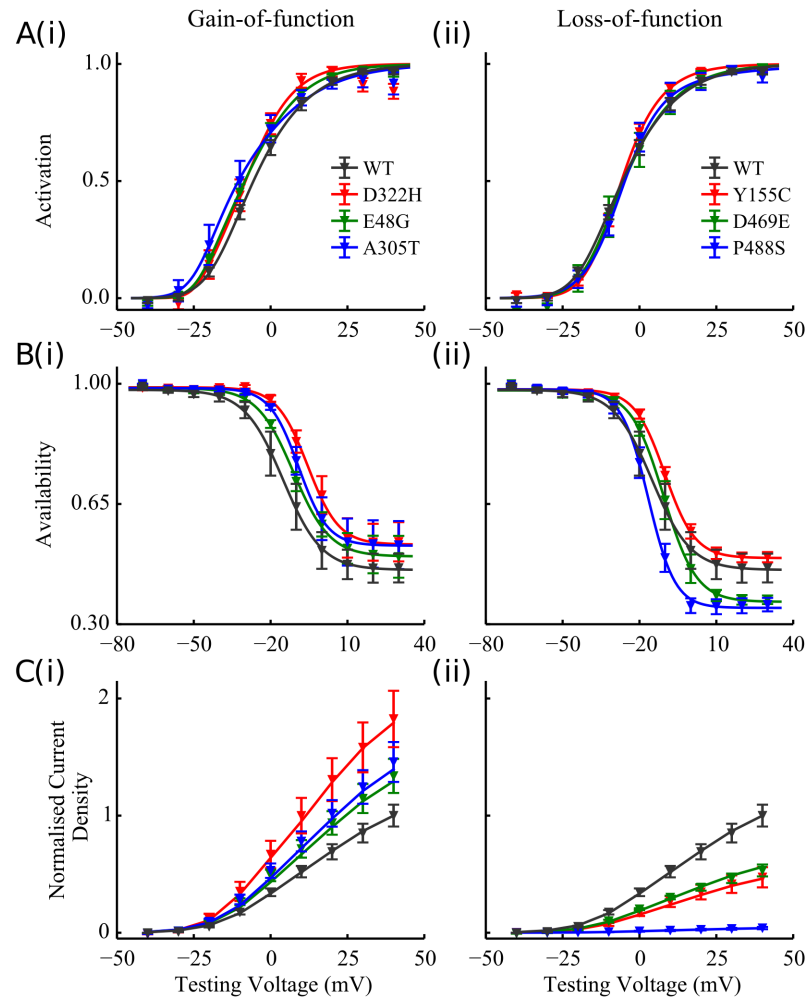


Fig 5. Modelling the electrophysiological properties of I_{Kur} carried by the mutants. **A** Steady-state activation; **B** Steady-state inactivation; **C** I-V relationship of I_{Kur} elicited by voltage clamp step protocol for the (i) gain- and (ii) loss-of-function mutations, compared to the WT (black). In the plots points indicate the experimental data [2] and lines represent simulated results.

<https://doi.org/10.1371/journal.pcbi.1005587.g005>

Single cell models

Multiple contemporary models of human atrial electrophysiology (*Courtemanche et al.* [21]; *Grandi et al.* [17]; and *Colman et al.* [13]) were used in the present study. These models exhibit diverse human atrial action potential properties and profiles.

The novel formulation of I_{Kur} was incorporated into the *Colman et al.* model; the updated model *Colman et al.* model was validated against experimental data (S6 Text). In *Courtemanche et al.* and *Grandi et al.* models, effects of mutations on atrial electrophysiology were simulated by incorporating the relative changes in steady-state gates and conductance relative to the WT I_{Kur} , summarised in Table 1.

S1-S2 stimulation protocol was used to obtain the APD restitution. For each model, a train of 100 S1 stimuli of 1000 ms was applied, which was followed by a further stimulus delayed by S2.

Regional cell models, accounting for variation in APD and AP morphology of difference regions within the atria, were implemented for the *Colman et al.* and *Courtemanche et al.*

Table 1. Changes in parameters of steady-state variables and maximum conductance of I_{Kur} carried by the *KCNA5* mutants relative to WT.

		D332H	E48G	A305T	Y155C	D469E	P488S
Activation	$V_{1/2}$	-3.264	-3.024	-4.068	-0.893	0	0
	K	× 0.809	× 0.956	× 1.101	× 0.757	× 1	× 0.834
Inactivation	$V_{1/2}$	+ 9.615	+ 4.028	+ 6.032	+ 5.013	+ 4.545	- 1.415
	K	× 0.801	× 0.940	× 0.748	× 0.782	× 0.842	× 0.688
	Minimum Availability (MA)	+ 0.074	+ 0.039	+ 0.071	+ 0.035	- 0.093	- 0.110
Maximum Conductance		× 1.799	× 1.323	× 1.445	× 0.475	× 0.546	× 0.038

Steady-state activation and inactivation were described using Boltzmann equation. For activation: $I/I_{max} = 1/\{1 + \exp[(V - V_{1/2})/k]\}$, inactivation $I/I_{max} = (1 - MA)/\{1 + \exp[(V - V_{1/2})/k]\} + MA$. Parameters were fitted to the experimental data digitalised from [2].

<https://doi.org/10.1371/journal.pcbi.1005587.t001>

models from previous modelling studies [13,21] (S7 Text). Regional differences between the electrophysiology of the right atrial bundles of the crista terminalis (CT) and the pectinate muscles (PM) were also incorporated into the Grandi *et al.* model [17] based on the same data (S7 Text).

To study the impact of the mutations on EAD production, the effect of isoproterenol (ISO, a β -agonist reproducing sympathetic activity) was incorporated into the Grandi *et al.* model according to their original study [17] and into the Courtemanche *et al.* and Colman *et al.* models based on the same parameter modifications.

Models of the *KCNA5* mutants were also combined with models of chronic AF-induced electrical remodelling (cAF) (from previous studies [13,17]), affecting the conductance and kinetics of multiple ion channels, in order to provide insight into the integral action of the arrhythmogenic substrate associated with the mutations and that associated with chronic AF (S8 Text).

Tissue modelling

Mathematical model of electrical excitation wave propagation. The wave propagation of atrial excitation was modelled by the well-known reaction-diffusion equation [13], given by:

$$\frac{\partial V_m}{\partial t} = \nabla \cdot (\mathbf{D} \nabla V_m) - \frac{I_{ion}}{C_m} \tag{11}$$

where V_m is the membrane potential, \mathbf{D} the tensor of diffusion coefficient, I_{ion} the total ionic transmembrane current in a single cell and the C_m is the membrane capacitance of the cell.

1D strand models. A simplified tissue model is developed in which a string of single cells are coupled in a 1D strand. Half of the model is the CT and half the PM, representing this region of the right atrium. The diffusion coefficient is set to give a conduction velocity close to the experimentally observed values along the fibre direction of 1.3 m/s. The Grandi *et al.* model was implemented for the purpose of evaluating the behaviour of EADs in tissue.

We also constructed 1D strand models of the conduction pathways from the SAN to the surrounding atria. The CT/PM/RAA cell models are from the Grandi *et al.*, as described previously (S7 Text). The SAN cell model was derived from the Colman *et al.* model and is an identical implementation to previous publications [14,41], based on mRNA data [42,43]. The morphology of simulated AP in the SAN model is comparable to experimental traces (Figure A in S9 Text).

3D anatomical human atrial model. Our previously developed 3D virtual human atria [13,14,44] was applied to assess the functional impact of the mutations on electrical wave behaviour in the organ. Details of the model have been previously published [13,14] and are

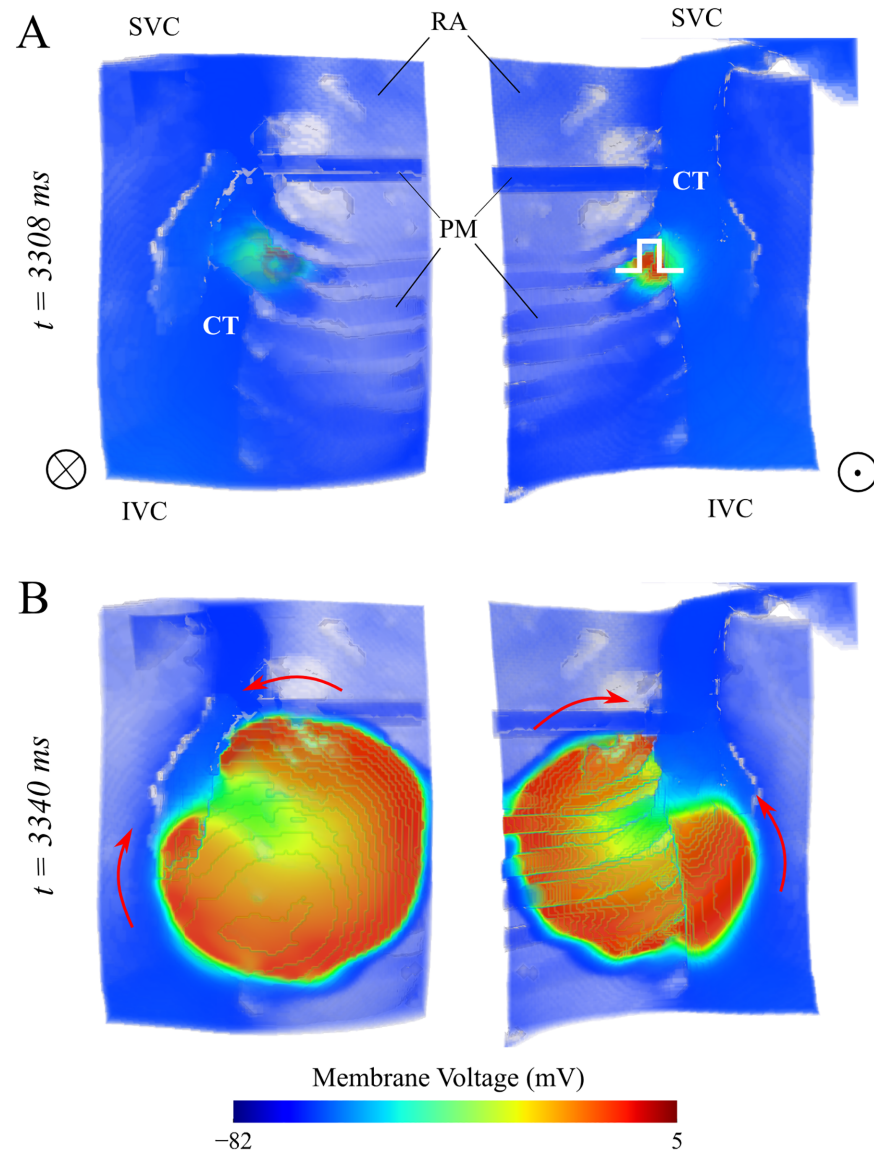


Fig 6. An example of simulated excitation wave break following S1-S2 stimuli at the CT/PM junction. A Volume rendering of the 3D human atrial wedge used in the simulations; S1-S2 were applied to the junction of CT/PM (indicated with white square wave in the top right panel); the labels are: SVC/IVC—superior/inferior vena cava, RA—right atrium, PM—pectinate muscle, CT—crista terminalis; **B** Simulated wave break arising from the S2 stimulus shown in **A**; the arrows indicate the direction of wave propagation.

<https://doi.org/10.1371/journal.pcbi.1005587.g006>

introduced in [S10 Text](#). Briefly, the anatomical atrial model is derived from the visible human dataset [44] and segmented into the major differentiated anatomical regions [13,44]. For all simulations, the model was preconditioned by implementing the initial conditions for all state variables as the stable-state values from a 1D tissue strand paced at 1Hz for 100 beats. Sinus rhythm was simulated by pacing the atria from the sinoatrial node region. APD was measured to an accuracy of 1 ms at each node on the final of 10 beats at 1Hz, using the time at which voltage reaches above -40 mV as the upstroke time.

3D Modelling of atrial vulnerability to unidirectional conduction block. Atrial vulnerability to unidirectional conduction block was quantified by an S1S2 pacing protocol applied to the heterogeneous junction [13,14,45] of the CT with the PM within a 3D atrial wedge ([Fig](#)

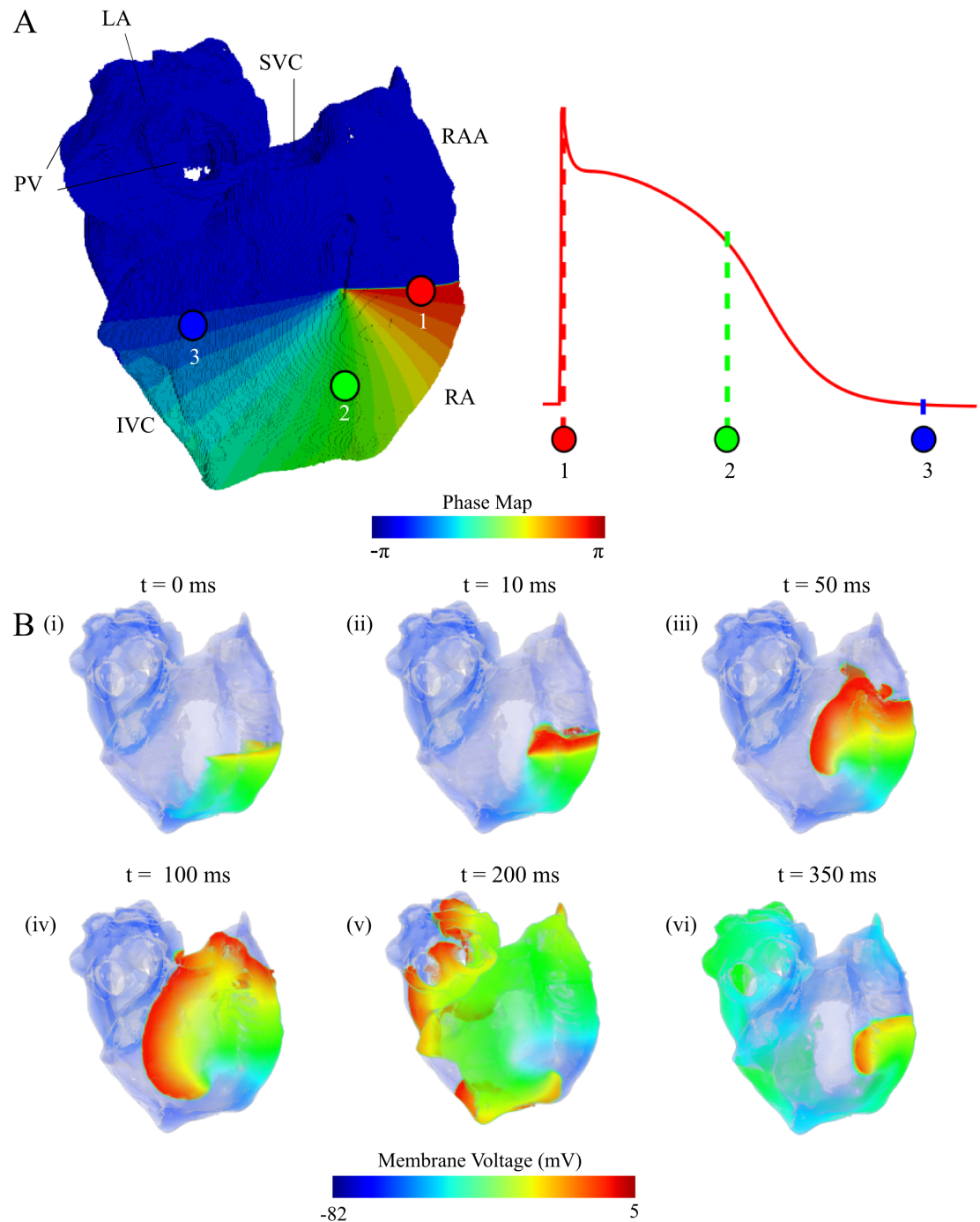


Fig 7. Illustration of the phase distribution method to initiate re-entrant waves in the 3D human atrial model. A The distributed phase map used on the anatomical model, with numbered indications of the stage of the AP which is mapped onto each location; RAA—right atrial appendage, PV—pulmonary vein, LA—left atrium; **B** Demonstration of the development of a spiral wave in the tissue with mapped initial conditions; the time of screenshot is indicated in the top of each panel.

<https://doi.org/10.1371/journal.pcbi.1005587.g007>

6A). A train of 7 S1 stimuli at 500ms was applied to a spherical tissue region of 3.3 mm in radius, which was followed by an S2 at variant intervals applied to the same site. This protocol has been used in previous studies [13]. The temporal vulnerability window was defined as the

temporal range of S2 giving rise to wave break in either direction but not both. An example of simulated wave break is presented in Fig 6B.

Initiation of re-entry in the human atria. To study the effect of the mutation induced alterations to parameters of AP on re-entrant wave dynamics, a phase-distribution method was implemented in order to attain re-entrant excitation independent of initiation methods [46,47]. Whereas this initiation mechanism is artificial, it allows for the investigation of the long term dynamics of excitation.

The phase distribution method involves mapping the state variables from the single cell model onto the anatomical model to create an asymmetric conduction pattern: (1) export the state variables from the resultant AP of the final stimulus applied to a 1D strand of homogeneous tissue, at discrete intervals throughout an entire AP cycle (Fig 7A); (2) use these values as the initial conditions in the 3D model, spatially distributed throughout the anatomy to create an asymmetric propagation wave which will develop into a spiral/scroll (Fig 7B).

Note that in simulations the diffusion coefficient (D , diffusion tensor in the monodomain equation) in the model, mimicking the intercellular electrical coupling, was varied between 100% (control, lone AF) and 40% (severe remodelling) to simulate possible remodelling in the connexin and atrial structures (e.g. 30% increase in the atrial volume) associated with AF [48–50], which resulted in up to 40% reduction in the conduction velocity as seen in previous studies [49,51,52]. A reduction in D promotes sustained re-entry, and thus the extent of the reduction required to sustain re-entry is an indicator of vulnerability. The dominant frequencies (DF) of sustained re-entrant excitation were then computed through Fourier analysis of the electrical activity in multiple single cells in different regions throughout the tissue [13]. DF computation was used as a measure of the ability of the atria to sustain rapid excitation; detailed spatial DF maps to demonstrate regional variation in excitation frequency and identify driving rotors were not computed due to (i) the direct control over the initiation of re-entry and (ii) the single mother rotor excitation observed (see Results).

For each mutation and WT with *Colman et al.* and *Courtemanche et al.* models, the first 5000 ms following initiation of re-entry was simulated and recorded for analysis.

A description of the numerical methods used in this study is given in S11 Text.

Supporting information

S1 Text. Analysis of the role of I_{Kur} in human atrial AP morphology.

(DOCX)

S2 Text. Effects of chronic AF remodelling on single cell electrophysiology.

(DOCX)

S3 Text. Simulated re-entrant spiral wave in the 3D human atria.

(DOCX)

S4 Text. Vulnerability windows in the *Courtemanche et al.* model.

(DOCX)

S5 Text. Effects of beta-adrenergic stimulation on human atrial myocytes.

(DOCX)

S6 Text. Validations to the updated *Colman et al.* model with a new formulation of I_{Kur} .

(DOCX)

S7 Text. Regional cell models.

(DOCX)

S8 Text. Modelling chronic-AF induced electrical remodelling.
(DOCX)

S9 Text. Human SAN model.
(DOCX)

S10 Text. 3D anatomical model of the human atria.
(DOCX)

S11 Text. Numerical methods.
(DOCX)

Acknowledgments

We would like to thank Dr. Sanjay Kharche from School of Medical Sciences, the University of Manchester for providing computer code for simulation of *Grandi et al.* cell model.

Author Contributions

Conceptualization: HZ.

Data curation: MAC HZ HN.

Formal analysis: HN MAC.

Funding acquisition: HZ MAC.

Investigation: HN MAC HZ.

Methodology: HN MAC.

Project administration: HZ.

Resources: HZ NS.

Software: HN MAC.

Supervision: HZ.

Validation: MAC HN.

Visualization: HN MAC.

Writing – original draft: MAC HN HZ NS BL.

Writing – review & editing: MAC HN HZ NS BL.

References

1. Fatkin D, Seidman CE, Seidman JG. Genetics and Disease of Ventricular Muscle. *Cold Spring Harb Perspect Med.* 2014; 4: a021063. <https://doi.org/10.1101/cshperspect.a021063> PMID: 24384818
2. Christophersen IE, Olesen MS, Liang B, Andersen MN, Larsen AP, Nielsen JB, et al. Genetic variation in *KCNA5*: impact on the atrial-specific potassium current *IKur* in patients with lone atrial fibrillation. *Eur Heart J.* 2013; 34: 1517–1525. <https://doi.org/10.1093/eurheartj/ehs442> PMID: 23264583
3. Andrade J, Khairy P, Dobrev D, Nattel S. The Clinical Profile and Pathophysiology of Atrial Fibrillation Relationships Among Clinical Features, Epidemiology, and Mechanisms. *Circ Res.* 2014; 114: 1453–1468. <https://doi.org/10.1161/CIRCRESAHA.114.303211> PMID: 24763464
4. Eckstein J, Conen D, Kuehne M. Atrial fibrillation: A moving target. *Swiss Med Wkly.* 2014; <https://doi.org/10.4414/smw.2014.14078> PMID: 25539064

5. Nattel S. New ideas about atrial fibrillation 50 years on. *Nature*. 2002; 415: 219–226. <https://doi.org/10.1038/415219a> PMID: 11805846
6. Nattel S, Burstein B, Dobrev D. Atrial Remodeling and Atrial Fibrillation Mechanisms and Implications. *Circ Arrhythm Electrophysiol*. 2008; 1: 62–73. <https://doi.org/10.1161/CIRCEP.107.754564> PMID: 19808395
7. Workman AJ, Kane KA, Rankin AC. The contribution of ionic currents to changes in refractoriness of human atrial myocytes associated with chronic atrial fibrillation. *Cardiovasc Res*. 2001; 52: 226–235. [https://doi.org/10.1016/S0008-6363\(01\)00380-7](https://doi.org/10.1016/S0008-6363(01)00380-7) PMID: 11684070
8. Caballero R, de la Fuente MG, Gómez R, Barana A, Amorós I, Dolz-Gaitón P, et al. In Humans, Chronic Atrial Fibrillation Decreases the Transient Outward Current and Ultrarapid Component of the Delayed Rectifier Current Differentially on Each Atria and Increases the Slow Component of the Delayed Rectifier Current in Both. *J Am Coll Cardiol*. 2010; 55: 2346–2354. <https://doi.org/10.1016/j.jacc.2010.02.028> PMID: 20488306
9. Gonzalez de la Fuente M, Barana A, Gomez R, Amoros I, Dolz-Gaiton P, Sacristan S, et al. Chronic atrial fibrillation up-regulates 1-Adrenoceptors affecting repolarizing currents and action potential duration. *Cardiovasc Res*. 2012; 97: 379–388. <https://doi.org/10.1093/cvr/cvs313> PMID: 23060133
10. Schotten U, Haan S de, Verheule S, Harks EGA, Frechen D, Bodewig E, et al. Blockade of atrial-specific K⁺-currents increases atrial but not ventricular contractility by enhancing reverse mode Na⁺/Ca²⁺ + -exchange. *Cardiovasc Res*. 2007; 73: 37–47. <https://doi.org/10.1016/j.cardiores.2006.11.024> PMID: 17157284
11. Pandit S V., Berenfeld O, Anumonwo JMB, Zaritski RM, Kneller J, Nattel S, et al. Ionic Determinants of Functional Reentry in a 2-D Model of Human Atrial Cells During Simulated Chronic Atrial Fibrillation. *Biophys J*. 2005; 88: 3806–3821. <https://doi.org/10.1529/biophysj.105.060459> PMID: 15792974
12. Kharche S, Garratt CJ, Boyett MR, Inada S, Holden A V., Hancox JC, et al. Atrial proarrhythmia due to increased inward rectifier current (I(K1)) arising from KCNJ2 mutation—a simulation study. *Prog Biophys Mol Biol*. 2008; 98: 186–197. <https://doi.org/10.1016/j.pbiomolbio.2008.10.010> PMID: 19041665
13. Colman MA, Aslanidi O V., Kharche S, Boyett MR, Garratt C, Hancox JC, et al. Pro-arrhythmogenic effects of atrial fibrillation-induced electrical remodelling: insights from the three-dimensional virtual human atria. *J Physiol*. 2013; 591: 4249–4272. <https://doi.org/10.1113/jphysiol.2013.254987> PMID: 23732649
14. Aslanidi O V., Colman MA, Stott J, Dobrzynski H, Boyett MR, Holden A V., et al. 3D virtual human atria: A computational platform for studying clinical atrial fibrillation. *Prog Biophys Mol Biol*. 2011; 107: 156–168. <https://doi.org/10.1016/j.pbiomolbio.2011.06.011> PMID: 21762716
15. Colman MA, Varela M, Hancox JC, Zhang H, Aslanidi OV. Evolution and pharmacological modulation of the arrhythmogenic wave dynamics in canine pulmonary vein model. *Europace*. 2014; 16: 416–423. <https://doi.org/10.1093/europace/eut349> PMID: 24569896
16. Olson TM, Alekseev AE, Liu XK, Park S, Zingman L V., Bienengraeber M, et al. Kv1.5 channelopathy due to KCNA5 loss-of-function mutation causes human atrial fibrillation. *Hum Mol Genet*. 2006; 15: 2185–2191. <https://doi.org/10.1093/hmg/ddl143> PMID: 16772329
17. Grandi E, Pandit S V., Voigt N, Workman AJ, Dobrev D, Jalife J, et al. Human Atrial Action Potential and Ca²⁺ Model Sinus Rhythm and Chronic Atrial Fibrillation. *Circ Res*. 2011; 109: 1055–1066. <https://doi.org/10.1161/CIRCRESAHA.111.253955> PMID: 21921263
18. Xie Y, Sato D, Garfinkel A, Qu Z, Weiss JN. So Little Source, So Much Sink: Requirements for Afterdepolarizations to Propagate in Tissue. *Biophys J*. 2010; 99: 1408–1415. <https://doi.org/10.1016/j.bpj.2010.06.042> PMID: 20816052
19. Qu Z, Xie L-H, Olcese R, Karagueuzian HS, Chen P-S, Garfinkel A, et al. Early afterdepolarizations in cardiac myocytes: beyond reduced repolarization reserve. *Cardiovasc Res*. 2013; 99: 6–15. <https://doi.org/10.1093/cvr/cvt104> PMID: 23619423
20. Song Z, Ko CY, Nivala M, Weiss JN, Qu Z. Calcium-voltage coupling in the genesis of early and delayed afterdepolarizations in cardiac myocytes. *Biophys J*. 2015; 108: 1908–1921. <https://doi.org/10.1016/j.bpj.2015.03.011> PMID: 25902431
21. Courtemanche M, Ramirez RJ, Nattel S. Ionic mechanisms underlying human atrial action potential properties: insights from a mathematical model. *Am J Physiol—Heart Circ Physiol*. 1998; 275: H301–H321.
22. Wettwer E, Hála O, Christ T, Heubach JF, Dobrev D, Knaut M, et al. Role of IK_{ur} in Controlling Action Potential Shape and Contractility in the Human Atrium Influence of Chronic Atrial Fibrillation. *Circulation*. 2004; 110: 2299–2306. <https://doi.org/10.1161/01.CIR.0000145155.60288.71> PMID: 15477405
23. Almquist J, Wallman M, Jacobson I, Jirstrand M. Modeling the Effect of Kv1.5 Block on the Canine Action Potential. *Biophys J*. 2010; 99: 2726–2736. <https://doi.org/10.1016/j.bpj.2010.08.062> PMID: 21044569

24. Scholz EP, Carrillo-Bustamante P, Fischer F, Wilhelms M, Zitron E, Dössel O, et al. Rotor Termination Is Critically Dependent on Kinetic Properties of *IK_{ur}* Inhibitors in an In Silico Model of Chronic Atrial Fibrillation. *PLoS ONE*. 2013; 8: e83179. <https://doi.org/10.1371/journal.pone.0083179> PMID: 24376659
25. Tsujimae K, Murakami S, Kurachi Y. In silico study on the effects of *IK_{ur}* block kinetics on prolongation of human action potential after atrial fibrillation-induced electrical remodeling. *Am J Physiol—Heart Circ Physiol*. 2008; 294: H793–H800. <https://doi.org/10.1152/ajpheart.01229.2007> PMID: 18055524
26. Burashnikov A, Antzelevitch C. Can inhibition of *IK_{ur}* promote atrial fibrillation? *Heart Rhythm*. 2008; 5: 1304–1309. <https://doi.org/10.1016/j.hrthm.2008.05.020> PMID: 18774108
27. Christ T, Wettwer E, Voigt N, Hála O, Radicke S, Matschke K, et al. Pathology-specific effects of the *IK_{ur}/I_{to}/I_K*, ACh blocker AVE0118 on ion channels in human chronic atrial fibrillation. *Br J Pharmacol*. 2008; 154: 1619–1630. <https://doi.org/10.1038/bjp.2008.209> PMID: 18536759
28. Tamargo J, Caballero R, Gómez R, Delpón E. *IK_{ur}/Kv1.5* channel blockers for the treatment of atrial fibrillation. *Expert Opin Investig Drugs*. 2009; 18: 399–416. <https://doi.org/10.1517/13543780902762850> PMID: 19335273
29. Morgan R, Colman MA, Chubb H, Seemann G, Aslanidi OV. Slow Conduction in the Border Zones of Patchy Fibrosis Stabilizes the Drivers for Atrial Fibrillation: Insights from Multi-Scale Human Atrial Modeling. *Front Physiol*. 2016; 7. <https://doi.org/10.3389/fphys.2016.00474> PMID: 27826248
30. McDowell KS, Vadakkumpadan F, Blake R, Blauer J, Plank G, Macleod RS, et al. Mechanistic inquiry into the role of tissue remodeling in fibrotic lesions in human atrial fibrillation. *Biophys J*. 2013; 104: 2764–2773. <https://doi.org/10.1016/j.bpj.2013.05.025> PMID: 23790385
31. Chang MG, Sato D, de Lange E, Lee J-H, Karagueuzian HS, Garfinkel A, et al. Bi-stable wave propagation and early afterdepolarization-mediated cardiac arrhythmias. *Heart Rhythm*. 2012; 9: 115–122. <https://doi.org/10.1016/j.hrthm.2011.08.014> PMID: 21855520
32. Wilhelms M, Maleckar MM, Koivumäki JT, Dössel O, Seemann G. Benchmarking electrophysiological models of human atrial myocytes. *Front Comput Physiol Med*. 2013; 3: 487. <https://doi.org/10.3389/fphys.2012.00487> PMID: 23316167
33. Wang Z, Fermi B, Nattel S. Delayed rectifier outward current and repolarization in human atrial myocytes. *Circ Res*. 1993; 73: 276–285. <https://doi.org/10.1161/01.RES.73.2.276> PMID: 8330373
34. Nygren A, Fiset C, Firek L, Clark JW, Lindblad DS, Clark RB, et al. Mathematical Model of an Adult Human Atrial Cell The Role of K^+ Currents in Repolarization. *Circ Res*. 1998; 82: 63–81. <https://doi.org/10.1161/01.RES.82.1.63> PMID: 9440706
35. Voigt N, Heijman J, Wang Q, Chiang DY, Li N, Karck M, et al. Cellular and Molecular Mechanisms of Atrial Arrhythmogenesis in Patients With Paroxysmal Atrial Fibrillation. *Circulation*. 2014; 129: 145–156. <https://doi.org/10.1161/CIRCULATIONAHA.113.006641> PMID: 24249718
36. Varela M, Colman MA, Hancox JC, Aslanidi OV. Atrial Heterogeneity Generates Re-entrant Substrate during Atrial Fibrillation and Anti-arrhythmic Drug Action: Mechanistic Insights from Canine Atrial Models. *PLOS Comput Biol*. 2016; 12: e1005245. <https://doi.org/10.1371/journal.pcbi.1005245> PMID: 27984585
37. Butters TD, Aslanidi OV, Zhao J, Smaill B, Zhang H. A novel computational sheep atria model for the study of atrial fibrillation. *Interface Focus*. 2013; 3: 20120067. <https://doi.org/10.1098/rsfs.2012.0067> PMID: 24427521
38. Nattel S, Dobrev D. The multidimensional role of calcium in atrial fibrillation pathophysiology: mechanistic insights and therapeutic opportunities. *Eur Heart J*. 2012; 33: 1870–1877. <https://doi.org/10.1093/eurheartj/ehs079> PMID: 22507975
39. Fedorov VV, Glukhov AV, Chang R, Kostecki G, Aferol H, Hucker WJ, et al. Optical Mapping of the Isolated Coronary-Perfused Human Sinus Node. *J Am Coll Cardiol*. 2010; 56: 1386–1394. <https://doi.org/10.1016/j.jacc.2010.03.098> PMID: 20946995
40. Bosch RF, Zeng X, Grammer JB, Popovic K, Mewis C, Köhlkamp V. Ionic mechanisms of electrical remodeling in human atrial fibrillation. *Cardiovasc Res*. 1999; 44: 121–131. [https://doi.org/10.1016/S0008-6363\(99\)00178-9](https://doi.org/10.1016/S0008-6363(99)00178-9) PMID: 10615396
41. Colman MA. Development of a Family of Regional Cell Models. *Mechanisms of Atrial Arrhythmias*. Springer International Publishing; 2014. pp. 87–114. Available: http://link.springer.com/chapter/10.1007/978-3-319-01643-6_4
42. Chandler NJ, Greener ID, Tellez JO, Inada S, Musa H, Molenaar P, et al. Molecular architecture of the human sinus node: insights into the function of the cardiac pacemaker. *Circulation*. 2009; 119: 1562–1575. <https://doi.org/10.1161/CIRCULATIONAHA.108.804369> PMID: 19289639
43. Chandler N, Aslanidi O, Buckley D, Inada S, Birchall S, Atkinson A, et al. Computer three-dimensional anatomical reconstruction of the human sinus node and a novel paranodal area. *Anat Rec Hoboken NJ*. 2007. 2011; 294: 970–979. <https://doi.org/10.1002/ar.21379> PMID: 21538926

44. Seemann G, Höper C, Sachse FB, Dössel O, Holden AV, Zhang H. Heterogeneous three-dimensional anatomical and electrophysiological model of human atria. *Philos Transact A Math Phys Eng Sci.* 2006; 364: 1465–1481. <https://doi.org/10.1098/rsta.2006.1781> PMID: 16766355
45. Aslanidi OV, Colman MA, Varela M, Zhao J, Smail BH, Hancox JC, et al. Heterogeneous and anisotropic integrative model of pulmonary veins: computational study of arrhythmogenic substrate for atrial fibrillation. *Interface Focus.* 2013; 3: 20120069. <https://doi.org/10.1098/rsfs.2012.0069> PMID: 24427522
46. Biktashev VN, Holden AV. Reentrant waves and their elimination in a model of mammalian ventricular tissue. *Chaos Woodbury N.* 1998; 8: 48–56. <https://doi.org/10.1063/1.166307> PMID: 12779709
47. Kharche SR, Stary T, Colman MA, Biktasheva IV, Workman AJ, Rankin AC, et al. Effects of human atrial ionic remodelling by β -blocker therapy on mechanisms of AF: a computer simulation. *Eur Eur Pacing Arrhythm Card Electrophysiol J Work Groups Card Pacing Arrhythm Card Cell Electrophysiol Eur Soc Cardiol.* 2014; 16: 1524–1533. <https://doi.org/10.1093/europace/euu084> PMID: 25085203
48. Severs NJ, Bruce AF, Dupont E, Rothery S. Remodelling of gap junctions and connexin expression in diseased myocardium. *Cardiovasc Res.* 2008; 80: 9–19. <https://doi.org/10.1093/cvr/cvn133> PMID: 18519446
49. Stiles MK, John B, Wong CX, Kuklik P, Brooks AG, Lau DH, et al. Paroxysmal Lone Atrial Fibrillation Is Associated With an Abnormal Atrial Substrate: Characterizing the “Second Factor.” *J Am Coll Cardiol.* 2009; 53: 1182–1191. <https://doi.org/10.1016/j.jacc.2008.11.054> PMID: 19341858
50. Bikou O, Thomas D, Trappe K, Lugenbiel P, Kelemen K, Koch M, et al. Connexin 43 gene therapy prevents persistent atrial fibrillation in a porcine model. *Cardiovasc Res.* 2011; 92: 218–225. <https://doi.org/10.1093/cvr/cvr209> PMID: 21799069
51. Igarashi T, Finet JE, Takeuchi A, Fujino Y, Strom M, Greener ID, et al. Connexin Gene Transfer Preserves Conduction Velocity and Prevents Atrial Fibrillation. *Circulation.* 2012; 125: 216–225. <https://doi.org/10.1161/CIRCULATIONAHA.111.053272> PMID: 22158756
52. Platonov PG, Mitrofanova LB, Orshanskaya V, Ho SY. Structural Abnormalities in Atrial Walls Are Associated With Presence and Persistency of Atrial Fibrillation But Not With Age. *J Am Coll Cardiol.* 2011; 58: 2225–2232. <https://doi.org/10.1016/j.jacc.2011.05.061> PMID: 22078429