

UC Irvine

UC Irvine Previously Published Works

Title

Early life adversity exposure and circulating markers of inflammation in children and adolescents: A systematic review and meta-analysis

Permalink

<https://escholarship.org/uc/item/6968g577>

Authors

Kuhlman, Kate R
Horn, Sarah R
Chiang, Jessica J
[et al.](#)

Publication Date

2020-05-01

DOI

10.1016/j.bbi.2019.04.028

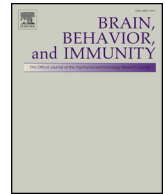
Peer reviewed



ELSEVIER

Contents lists available at ScienceDirect

Brain, Behavior, and Immunity

journal homepage: www.elsevier.com/locate/ybrbi

Early life adversity exposure and circulating markers of inflammation in children and adolescents: A systematic review and meta-analysis

Kate R. Kuhlman^{a,b,*}, Sarah R. Horn^c, Jessica J. Chiang^d, Julienne E. Bower^{b,e}

^a Department of Psychology & Social Behavior, University of California Irvine, Irvine, CA 92697, United States

^b Cousins Center for Psychoneuroimmunology, Semel Institute for Neuroscience & Human Behavior, University of California Los Angeles, Los Angeles, CA 90095, United States

^c Department of Psychology, University of Oregon, Eugene, OR 97403, United States

^d Department of Psychology, Northwestern University, Evanston, IL 60201, United States

^e Department of Psychology, University of California Los Angeles, Los Angeles, CA 90095, United States

ARTICLE INFO

Keywords:

Early life adversity
Childhood
Adolescents
Inflammation
Meta-analysis

ABSTRACT

This study provides a comprehensive review of the published research on the association between early life adversity and markers of inflammation in children and adolescents. We conducted a systematic review of the published literature on the association between early life adversity and markers of inflammation in pediatric populations. To date, 27 studies have been published in this area representing a wide range of global populations and diverse methods of which nearly half were prospective, longitudinal studies. Of these 27, only 13 studies shared an inflammatory outcome with 4 or more other studies; 9 for CRP, and 7 for IL-6. The association between early life adversity and both CRP, $z = 0.06 [-0.01, 0.14]$, and IL-6, $z = 0.06 [-0.17, 0.30]$, was small and non-significant when subjected to meta-analysis, although comparable in magnitude to the effects observed in adult samples. Descriptively, the association between early life adversity and CRP appeared to be stronger in studies conducted in infants and adolescents compared with middle childhood. There was minimal evidence of publication bias for studies measuring CRP, but evidence of publication bias for studies using IL-6. Eight studies have looked at the association between early life adversity and stimulated inflammatory cytokines in vitro, and both the methods and results of these studies were mixed; the majority observed exaggerated production of inflammatory cytokines despite mixed methodological approaches that make comparisons across studies difficult. In summary, the evidence supporting an association between early life adversity and inflammation in pediatric samples is limited so far by the number of studies and their heterogeneous methodological approaches. More research that is grounded in a developmental framework and informed by the complexity of the innate immune system is needed in this area.

1. Introduction

Approximately 12% of youth, from infancy to age 18, will be exposed to early life adversity to such an extent that they will experience lifelong mental and physical health disparities (Felitti et al., 1998; Kalmakis and Chandler, 2015). Early life adversity encompasses abuse by a caregiver, parent psychopathology, poverty, parent separation, household dysfunction, natural disasters, assault, and other unpredictable, potentially traumatic events (Felitti et al., 1998; Kessler et al., 2010; Kuhlman et al., 2018b). This minority of youth will account for nearly half of all psychiatric disorders (Kessler et al., 2010), experience at least a 44% increase in heart attacks and strokes (Korkeila et al., 2010), and an increased risk of all-cause mortality by age 50

(Chen et al., 2016; Kelly-Irving et al., 2013). Yet, the developmental pathways through which early life adversity places youth on a trajectory of lifelong health disparity is not well understood, thus impeding prevention and the development of targeted interventions that could mitigate these lifelong sequelae. One pathway through which early life adversity may presage lifelong psychiatric and cardiovascular health disparities is through alterations to the immune system, particularly by increasing inflammation. The purpose of this review was to synthesize the published research on the association between early life adversity and markers of inflammation measured during childhood and adolescence.

One hypothesized pathway through which early life adversity may lead to these health disparities is through alterations to the innate

* Corresponding author.

E-mail address: krkuhl@uci.edu (K.R. Kuhlman).

<https://doi.org/10.1016/j.bbi.2019.04.028>

Received 2 July 2018; Received in revised form 21 December 2018; Accepted 14 April 2019

0889-1591/© 2019 Elsevier Inc. All rights reserved.

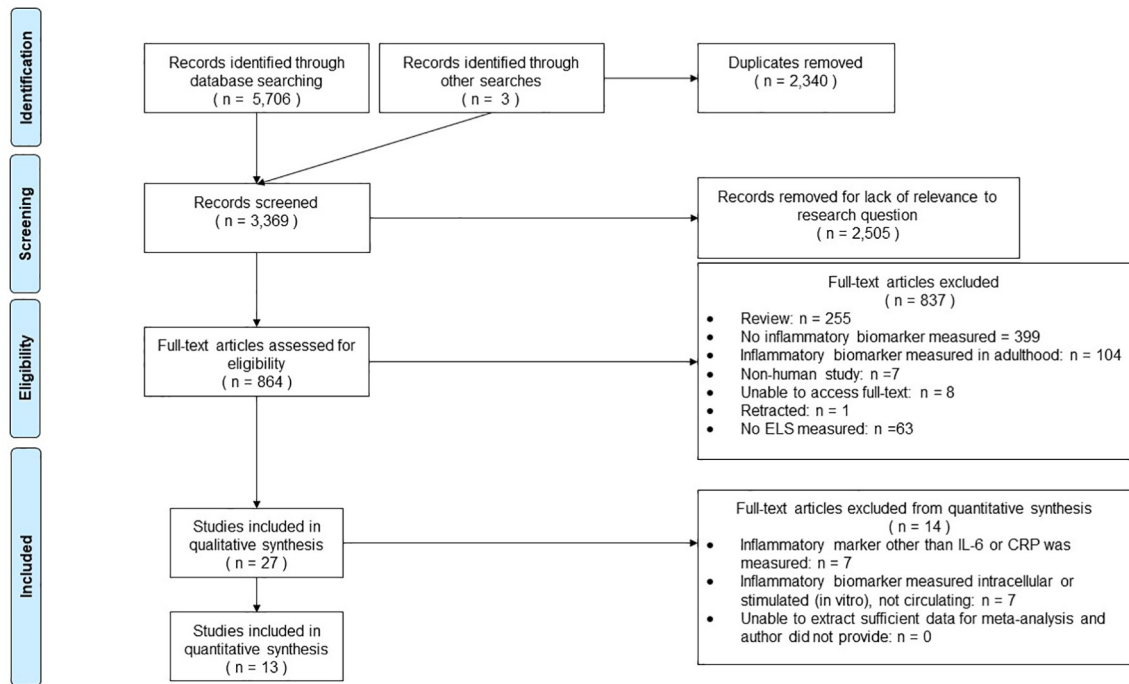


Fig. 1. PRISMA diagram depicting articles identification.

immune system, which is responsible for inflammation or the body's initial defense against pathogens and tissue injury. In the short term, inflammation is protective against a wide range of bacterial and viral infections (See [Mogensen, 2009](#) for review). However, chronic inflammation can also contribute to the pathogenesis of other diseases. For example, inflammation reorganizes human behavior to promote healing and recovery, which can mimic the behavioral phenotype observed in depression ([Dantzer et al., 2008](#); [Eisenberger et al., 2010](#)), and has been prospectively linked to the pathogenesis of depression ([Gimeno et al., 2009](#); [Miller and Raison, 2016](#)). This phenomenon has been the topic of investigation for the past three decades ([Dantzer and Kelley, 2007](#)). Chronic inflammation is also a well-established biological marker of cardiovascular disease risk ([Koenig et al., 1999](#); [Ridker, 2003](#); [Ridker et al., 1997](#)), has been implicated in the development and progression of cancer ([Harris, 2007](#); [Harris et al., 2014](#)), and can lead to a number of serious health conditions commonly observed in older adults ([Franceschi and Campisi, 2014](#)).

There are several methods of assessing inflammatory activity. The most common is to measure circulating concentrations of inflammatory cytokines and markers of inflammation under resting/basal conditions in peripheral tissues (plasma, serum, dried blood spots, and saliva). This approach provides an index of the amount of inflammatory signaling occurring in the body at any given time. Another approach is to stimulate immune cells in vitro with bacterial agents, such as lipopolysaccharide (LPS), or other antigens that activate inflammatory processes. In this method, the amount of pathogen exposure in vitro is tightly controlled, and provides an index of the phenotypic potential for inflammatory reactivity within an individual's immune system.

The association between early life adversity and markers of inflammation in adulthood is well-established ([Baumeister et al., 2016](#); [Danese et al., 2009, 2007](#); [Matthews et al., 2014](#)). Indeed, a meta-analysis of the 25 studies investigating the association between childhood trauma exposure and circulating inflammatory markers in adulthood was published only 2 years ago showing small, yet significant, effect sizes overall; $z = 0.10$ for CRP, $z = 0.08$ for IL-6, and $z = 0.23$ for TNF- α ([Baumeister et al., 2016](#)). Yet, it remains unclear whether relatively healthy youth exposed to early life adversity exhibit a similar exaggerated inflammatory profile to that observed in adults ([Slopen](#)

[et al., 2012](#)).

Inflammation is carefully regulated throughout childhood and adolescence, and accumulates with age through biological aging, behavioral, psychosocial, and environmental pathways that impede effective regulation ([Franceschi and Campisi, 2014](#); [Miller et al., 2011](#)). Thus, it is possible that the association between adversity exposure and inflammatory biomarkers does not emerge before adulthood or may be masked by regulatory processes. That being said, if inflammation is a pathway through which early life adversity contributes to lifelong health disparities, identifying the earliest signs of this pathway will allow early detection of those at greatest risk.

In the present study, we conducted a systematic review of the published literature on the association between early life adversity and inflammation in pediatric populations (ages birth to 18 years) with particular interest in characterizing the methodological landscape of the field to date; a meta-analysis of the studies that have indexed inflammation using circulating CRP and IL-6; and a qualitative analysis of studies looking at inflammatory responses of immune cells following in vitro stimulation. We hypothesized that youth exposed to early life adversity would demonstrate greater circulating markers of inflammation, and an emerging pro-inflammatory phenotype as measured in vitro by stimulated production of inflammatory cytokines.

2. Methods

2.1. Search strategy and inclusion criteria

The literature reviewed and subjected to systematic review and meta-analytic analyses represent a subset of published articles identified for a larger project within our research laboratory ([Horn et al., 2017](#); [Kuhlman et al., 2017](#)). For the larger project, we conducted a systematic review of the literature on early life adversity and peripheral physiological stress systems using the PUBMED database according to the guidelines established in the Preferred Reporting Items for Systematic Reviews and Meta-Analyses (PRISMA) ([Moher et al., 2009](#)). We identified relevant studies conducted in humans using cross-referenced search terms related to adversity (i.e., "child adversity", "child trauma", "child maltreatment", "early life stress", "child poverty", "early life

Table 1
Methodological and descriptive characteristics of published studies on association between childhood adversity and inflammatory biomarkers in pediatric samples ($n = 27$).

	<i>M (SD)</i>	Range	% (<i>n</i>)
<i>Sample characteristics</i>			
Sample size	267.33 (474.20)	27–2,232	
Percent female	58.11 (23.65)	0–100	
Percent Caucasian	40.42 (30.49)	0–100	
Age of participants at adversity assessment	9.59 (1.17)	0–17.80	
Age of participant at inflammatory assessment	10.60 (5.88)	1.42–19.50	
Longitudinal study design			37.0 (10)
Length of follow-up ($n = 14$)	2.85 (4.11)	0–13	
Participants were excluded for steroid medication use			29.6 (8)
Participants were excluded for anti-depressant medication use			29.6 (8)
<i>Childhood adversity measurement characteristics</i>			
Adversity was retrospectively reported			40.7 (11)
Adversity reporter			
Victim/child			37.0 (10)
Caregiver			40.7 (11)
Third party/record review			18.5 (5)
Combination			3.7 (1)
Adversity assessment format			
Self-report questionnaire			48.1 (13)
Clinical interview			22.2 (6)
Record review			22.2 (6)
Multiple			7.4 (2)
<i>Inflammatory biomarker measurement characteristics</i>			
Type of tissue used for inflammatory biomarker ¹			
Blood			70.4 (19)
Saliva			33.3 (9)
Included measure of HPA-axis function			29.6 (8)
Circulating inflammation at rest			74.1 (20)
Inflammatory response to challenge			44.4 (12)

¹ Groups not mutually exclusive.

adversity”, “childhood socioeconomic status”) with search terms related to functioning of the HPA-axis or inflammatory arm of the immune system (i.e., “inflammation”, “inflammatory”, “innate immunity”, “cytokine”, “interleukin”, “cortisol”, “neuroendocrine”, “HPA-axis”). All duplicate articles were removed. Eligibility for article inclusion in the larger project was independently determined by two members of the research staff. Reliability for inclusion across raters was good, $\alpha = 0.88$, and articles where raters were discrepant on inclusion were reviewed individually by the first author to determine eligibility. Criteria for inclusion were full peer-reviewed journal articles, available in English, which examined the association between exposure to adversity during childhood and functioning of either the hypothalamic-pituitary-adrenal (HPA)-axis or the inflammatory arm of the immune system. Articles that were relevant to the scope of the project but had used non-human animals, were reviews, or were retracted were excluded.

For each article, pertinent methodological details regarding the sample, study design, measurement of early life adversity, and measurement of the biological marker were extracted by trained research assistants. Data extracted from each article included: year of publication, journal of publication, study design (longitudinal or cross-sectional), sample size, the percent of participants that were female, percent of participants that were Caucasian, whether the study excluded participants for taking steroid or anti-depressant medication, the early

life adversity measure used, the mean age of the sample at the time of the early life adversity assessment, whether early life adversity was assessed retrospectively, who reported the early life adversity exposure (caregiver, victim, 3rd party), the method of assessing early life adversity (self-report questionnaire, clinical interview, record review), whether the biological outcome was related to the HPA-axis or inflammation, the type of tissue used to measure the biomarker (blood, saliva, hair, urine), the mean age of the sample at the biomarker assessment, and whether the study looked at functioning of these physiological systems under resting/basal conditions or following a stressor/stimulation.

Articles from this larger database selected for inclusion in the present systematic review and meta-analysis were those studies looking specifically at the association between early life adversity and 1) a marker of inflammatory function that was 2) measured during childhood or adolescence. Given the nascent state of this field, inflammatory function was broadly defined and in some cases included markers that are non-specifically linked to both innate and adaptive immune function. For each of these included articles, two of the authors extracted which cytokines were measured in the study, the reported association between early life adversity and each inflammatory marker, and the covariates included in the models used to compute these associations. If results were reported by stratified groups, such as by sex or presence of a physical or mental illness, the coefficient for each group was recorded. Relevant tests of this association are Pearson correlations (r), t -tests (t), F -tests (F), odds ratios (OR), Cohen’s D s (d), standardized betas (β), unstandardized betas (b), Mann Whitney U (z), or mean differences between groups. The effect size extracted from the article and the test used to compute it was recorded by two authors. Discrepancies between authors were discussed until a consensus was reached. For articles where the association between early life adversity and the study’s chosen inflammatory marker were not clear or complete, the corresponding author of that manuscript was emailed to provide the pertinent information or to clarify the details of the model presented in the published article.

2.2. Meta-analysis

Meta-analyses were conducted separately for any inflammatory biomarker with 5 or more studies. This only applied to two inflammatory markers: C-reactive protein (CRP) and interleukin-6 (IL-6). To conduct our meta-analysis, we employed a random-effects model, which is a more conservative meta-analytic approach that accounts for within- and between-study variation. Random-effects models assume a distribution of effect sizes across studies and produce wider confidence intervals compared to the fixed-model approach (Egger et al., 1997; Hedges and Vevea, 1998). All effect sizes were transformed to r -values, with positive r -values signifying a positive relationship between early life adversity and the inflammatory marker. R -values are comparable across studies with different designs (e.g., predictor type) and were easily computable from information extracted from the manuscripts. In the event that studies stratified results by group (e.g., sex, weight), the results were treated as separate analyses. The *metafor* and *userfriendlyscience* packages on RStudio 1.0.136 were utilized to compute and aggregate effect sizes. All results are reported as Fisher’s r -to- z transformed correlation coefficients.

The Q and I^2 statistics were calculated to assess heterogeneity among effect sizes. The Q statistic, distributed as χ^2 , specifies if variability among study outcomes is large enough to reject the null hypothesis that they are drawn from a common population. The I^2 value describes the percentage of variation across studies due to heterogeneity. Moderator analyses were conducted if there was evidence of statistically significant heterogeneity (Higgins and Thompson, 2002). The following moderators were evaluated: 1) average age of participants at the time of the inflammatory measure (i.e., infancy = 0–2 years, childhood = age 3 to 9, late childhood/

Table 2
Childhood adversity and inflammation using circulating markers of inflammation.

Study	Included in meta-analysis	Sample size	Mean Age of sample (years)	Sample characteristics ¹	Adversity exposure	Inflammatory outcomes ²	Main result
David et al. (2017)	Yes	49	1.42	Healthy community sample of mother-infant dyads participating in a larger longitudinal sample	Socioeconomic disadvantage and maternal psychosocial stress	Salivary C-reactive protein	<ul style="list-style-type: none"> • (+) Socioeconomic disadvantage and maternal psychosocial stress independently predicted higher infant CRP levels
Measelle and Ablow (2018)	No	49	1.42	Healthy community sample of mother-infant dyads participating in a larger longitudinal sample	Maternal depression, socioeconomic disadvantage, and familial stress	Composite measure of pro-inflammatory cytokines (IL-1 β , IL-6, IL-8, and TNF- α) and the inflammatory protein C-reactive protein measured via saliva	<ul style="list-style-type: none"> • (+) Maternal depression was associated with infant a greater inflammatory phenotype
Phillips et al. (2004)	No	130	2.67	Rural children in Nigeria	Severe poverty and extensive malnutrition	Th1 and Th2 cytokines, IL-12, IL-6	<ul style="list-style-type: none"> • (–) Measles promoted a TH(1) to TH(2) cytokine shift, with severe depletion of plasma interleukin (IL)-12, a key cytokine in the development of cell mediated immunity. • (+) IL-6, a key stimulator of hepatic acute phase protein response, was prominently increased in plasma in measles-infected children
Hadley and Decaro (2014)	Yes	1387	3.0	Nationally representative study of children in Tanzania	Household size, access to water and indoor plumbing	CRP via dried blood spots	<ul style="list-style-type: none"> • (+) Greater household size was associated with CRP \geq 1.1 mg/l
Tyrka et al. (2015)	Yes	40	4.16	Maltreated children identified through child welfare, and community controls recruited from low-income pediatric clinic	Childhood maltreatment exposure via child welfare records	Salivary IL-1 β and CRP	<ul style="list-style-type: none"> • (+) Number of past month contextual stressors, lifetime contextual stressors, and traumatic life events were associated with higher IL-1β. • (O) CRP was not associated with any adversity variables
Riis et al. (2016)	Yes	125	5.45	Healthy, community sample	Maternal psychological distress	Salivary IL-1 β , IL-6, IL-8, TNF- α	<ul style="list-style-type: none"> • (O) No significant association between maternal distress and cytokines
Hagel et al. (1995)	No	85	8.50	Ascariis-infected children living in an urban slum area of Caracas, Venezuela	Malnutrition	IgE and IL-4	<ul style="list-style-type: none"> • (+) After anthelmintic treatment of the children, the total serum IgE and IL-4 levels decreased significantly in the well-nourished group, while the specific anti-Ascariis IgE antibody response increased
Bücker et al. (2015)	Yes	62	9.44	Community sample of children (ages 3–12) drawn from a Child Protection Programme and foster care system in south Brazil	Met Criteria A for PTSD in DSM-IV via clinical interview	TNF- α , IL-12p70, IL-6, IL-8, IL-10, and IL-1 β	<ul style="list-style-type: none"> • (+) Exposure to childhood trauma was associated with elevated TNF-α, (O) but not any other cytokines
Cicchetti et al. (2015)	Yes	489	9.72	Youth participating in a summer day camp for low-income children	Maltreatment determined via Department of Human Services records	Salivary CRP	<ul style="list-style-type: none"> • (O) No differences in CRP between maltreated and non-maltreated youth
Ullmer-Yaniv et al. (2018)	No	177	10	Israeli families enrolled in a longitudinal study living in comparable towns either near or far from Gaza border.	Exposure to continuous wartime trauma	Salivary IgA	<ul style="list-style-type: none"> • (+) War-exposed children showed higher concentrations of sIgA
Worthman and Panter-Brick (2008)	No	107	11.80	Rural, homeless, and urban Nepali children	Relative socioeconomic disadvantage and homelessness	Alpha 1-antichymotrypsin	<ul style="list-style-type: none"> • (O) Homelessness was not associated with Alpha 1-antichymotrypsin
Goosby et al. (2015)	Yes	58	12.32	Low-income African American and Caucasian mothers with a focal child between the ages of 10 and 15 were recruited through health fairs.	Perceived discrimination	CRP via dried blood spots	<ul style="list-style-type: none"> • (+) Perceived discrimination among youth was significantly associated with higher levels of CRP
Falcone et al. (2015)	No	115	14.20	Youth admitted to child and adolescent psychiatric unit with mood disorders or psychosis	Childhood trauma using the Life Events Checklist and the Adverse Childhood experiences scale	S100B	<ul style="list-style-type: none"> • (+) Patients with greater levels of childhood trauma had significantly higher S100B levels

(continued on next page)

Table 2 (continued)

Study	Included in meta-analysis	Sample size	Mean Age of sample (years)	Sample characteristics ¹	Adversity exposure	Inflammatory outcomes ²	Main result
Chen et al. (2013)	Yes	163	14.50	Community sample of families from Vancouver, British Columbia, Canada	Low childhood socioeconomic status	IL-6 and CRP	<ul style="list-style-type: none"> • (+) Lower SES was associated with higher IL-6, (∅) not associated with CRP
Kılıç et al. (2017)	Yes	27	15	Treatment seeking population in hospital within 72 h of sexual abuse experience in Bursa, Turkey	Sexual abuse	IL-6 and IL-10	<ul style="list-style-type: none"> • (-) Sexually abused children had higher IL-6 compared to non-sexually abused children
Bick et al. (2015)	No	206	15.30	Community sample	History of childhood neglect	Macrophage Migration Inhibitory Factor (MIF)	<ul style="list-style-type: none"> • (-) Severe neglect associated with greater MIF
Chen et al. (2003)	No	30	15.40	Adolescents with persistent asthma	Low SES and cumulative life stress	IL-4, IL-5, IFN- γ	<ul style="list-style-type: none"> • (∅) No differences between low and high SES groups in cytokines
Walsh et al. (2016)	Yes	133	16.50	Pregnant adolescent girls	Exposure to child abuse	IL-6 and CRP	<ul style="list-style-type: none"> • (∅) No significant association between abuse and inflammatory markers
Baldwin et al. (2018)	Yes	2,232	18	Longitudinal birth cohort of British twins in the United Kingdom	Cumulative exposure to several types of victimization (domestic violence between the mother and her partner; frequent bullying by peers; physical maltreatment by an adult; sexual abuse; emotional abuse and neglect; and physical neglect) assessed at ages 5, 7, 10, and 12 years.	CRP	<ul style="list-style-type: none"> • (-) Females exposed to more victimization had higher CRP
Miller and Chen (2010)	Yes	135	18.5	Young women at risk for affective disorders in Vancouver, British Columbia, Canada	Harsh family climate and episodic recent stressors	IL-6	<ul style="list-style-type: none"> • (∅) Harsh family climate was not associated with IL-6
Miller and Cole (2012)	Yes	147	19.5	All female community sample in Vancouver, British Columbia, Canada	Childhood adversity was indexed by parental separation, low socioeconomic status, and familial psychopathology	CRP and IL-6	<ul style="list-style-type: none"> • (-) Early adversity was associated with higher CRP, higher IL-6, and having CRP \geq 3 mg/L

¹ All studies conducted in the United States of America unless otherwise noted.² Measured in blood unless otherwise noted.

Forest Plot of Early Life Adversity and CRP by Age

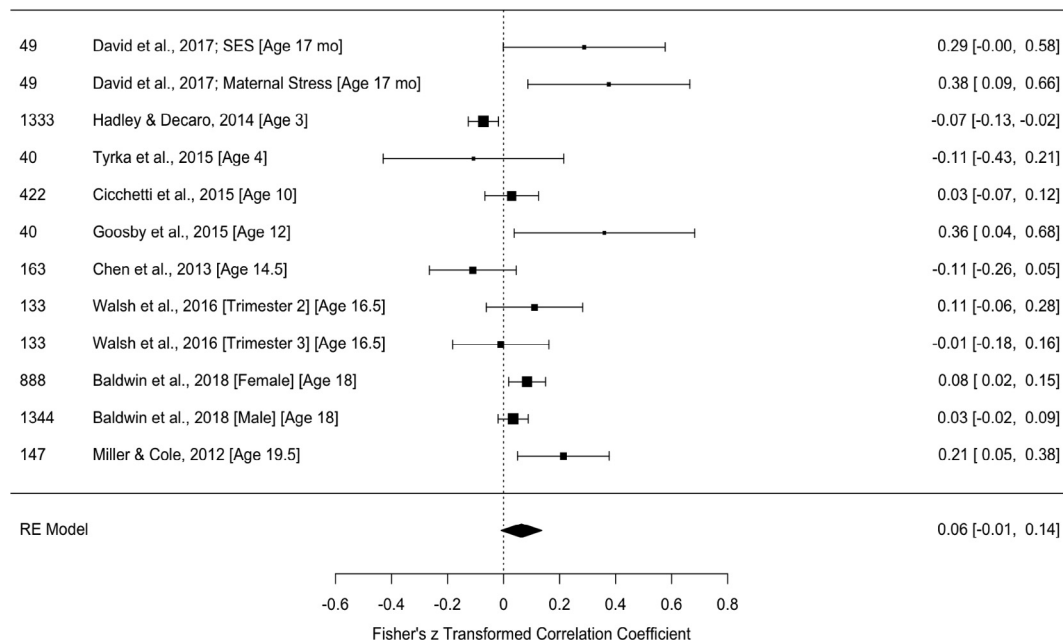


Fig. 2. Forest plot of childhood adversity and CRP. From left to right: Sample size, Author's name with mean age of sample, effect size and 95% Confidence Interval.

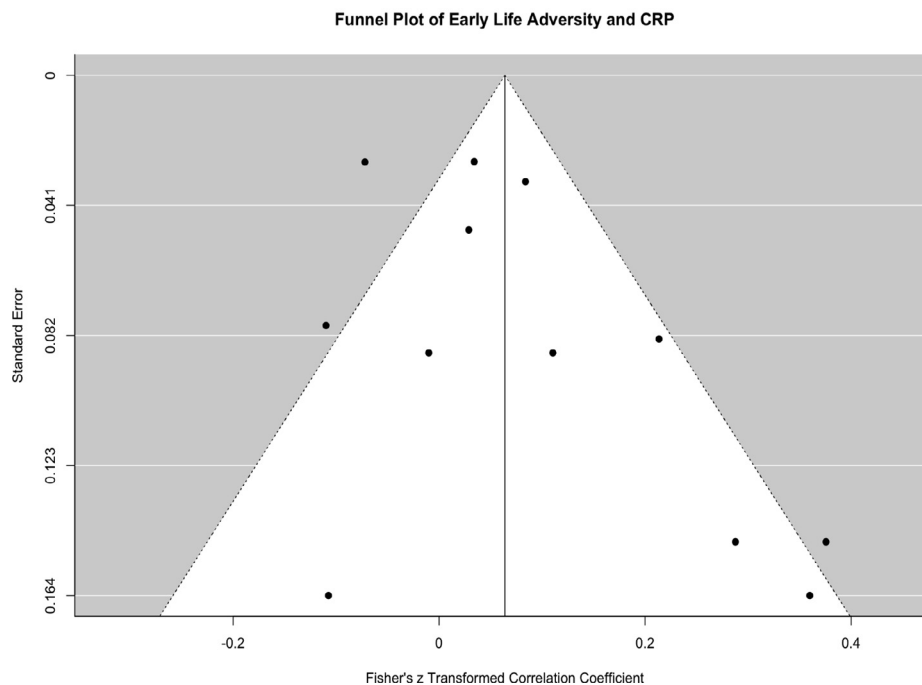


Fig. 3. Funnel plot for studies examining childhood adversity and CRP.

adolescent = 10 years of age or older) (Canadian Paediatric Society, 2003), 2) statistical adjustment for body mass index or waist circumference, 3) statistical adjustment for sex, 4) statistical adjustment for age, 5) tissue type (inflammatory marker measured in blood, saliva, or via dried blood spots), 6) type of early life adversity measure (self-report, clinical interview, record review), and 7) reporter of early life adversity (i.e., victim or caregiver/third party). See O'Connor and colleagues (2009) for a review on why moderators such as BML, sex, and

age should be considered in studies of inflammatory markers.

Forest plots were created to display the effect sizes for each study included in the meta-analysis with associated 95% CIs. To explore potential publication bias, funnel plots that illustrate the distribution of effect sizes by their standard error were created (Sterne and Egger, 2001). Studies falling outside the funnels depicting increasing magnitude effect sizes with decreasing standard errors are considered evidence of publication bias (Sterne and Egger, 2001).

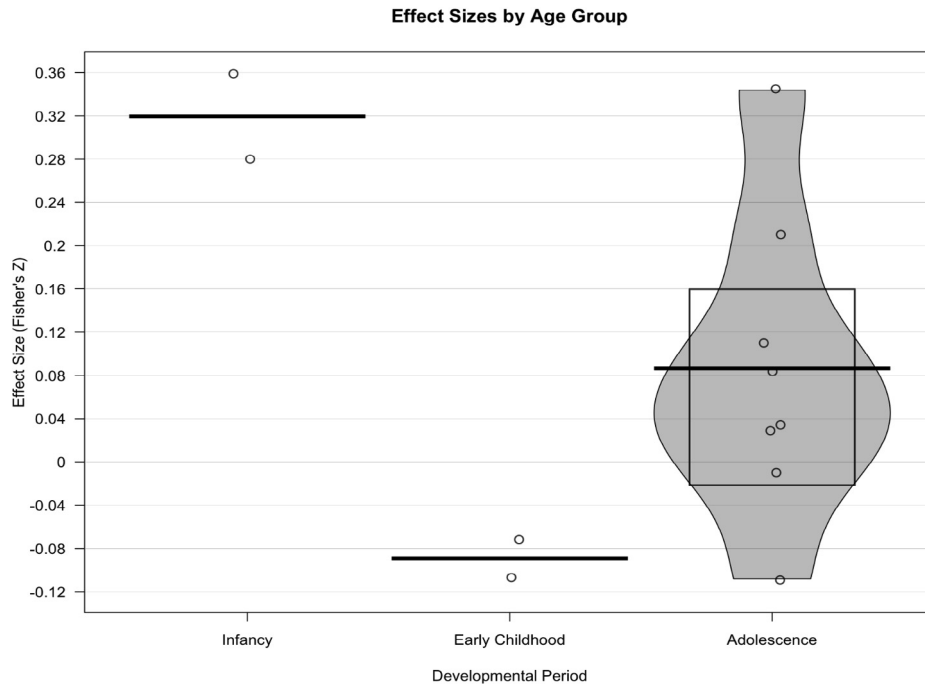


Fig. 4. Violin plot illustrating association between early life adversity and CRP by age groups (infancy, early childhood, adolescence).

Forest Plot of Early Life Adversity and IL-6 by Age

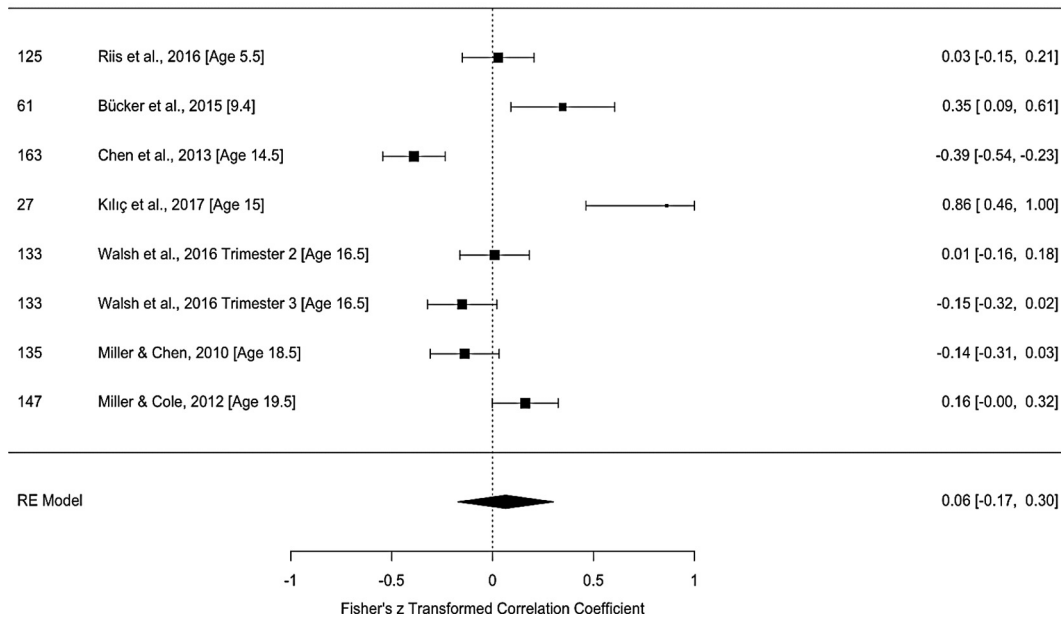


Fig. 5. Forest plot of childhood adversity and circulating IL-6. From left to right: Sample size, Author's name with mean age of sample, effect size and 95% Confidence Interval.

3. Results

We identified 27 published, empirical studies that examined the association between early life adversity and an inflammatory marker in pediatric samples. Fig. 1 contains the PRISMA diagram depicting the article selection process that resulted in these 27 studies published between 1995 and 2018.

First, we provide descriptive analysis of the 27 studies identified in our systematic review. Table 1 provides descriptive characteristics of these 27 studies. This information is organized into information pertaining to the sample, assessment of early life adversity, and measurement of the inflammatory biomarker. Despite the somewhat small number of studies published in this area, they reflect a wide range of methodologies, in diverse samples across the globe. First, these studies

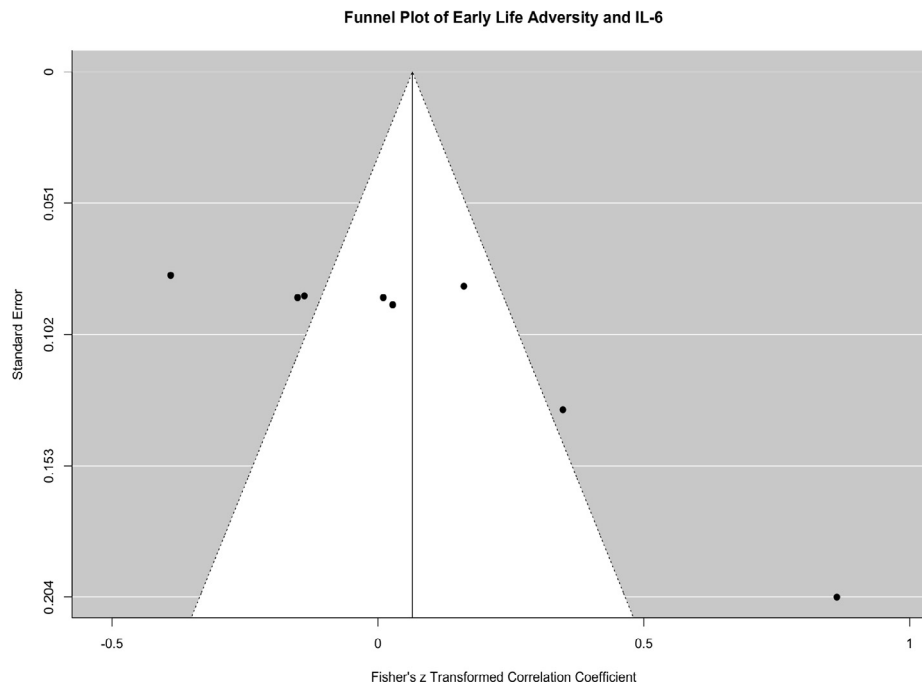


Fig. 6. Funnel plot for studies examining childhood adversity and IL-6.

used samples that ranged from 27 to 2232 participants in youth from birth to age 19 and represented multiple ethnic groups. Notably, almost half used a prospective longitudinal design, where early life adversity was measured before the inflammatory markers; and one third of studies reported that participants were excluded from participating for steroid or antidepressant medication use.

Early life adversity was measured using a number of methods in these studies. Given that the vast majority of studies in adult samples use retrospective self-report of early life adversity, it is notable that only 41% of studies used retrospective reports of adversity, and 37% of studies used victim reported adversity exposure. The remaining studies used adversity exposure that was reported by a caregiver, a third party, or used multiple informants. The distribution of methods used to assess early life adversity was similarly varied such that the most common method was via a questionnaire, yet this only accounted for 48% of studies. A similarly large proportion of studies used clinical interviews or third party record reviews.

The inflammatory biomarkers measured were heterogeneous across these studies, including studies of both circulating and stimulated cytokines. The most commonly measured inflammatory markers were IL-6 ($n = 7$), TNF- α ($n = 2$), CRP ($n = 9$), IFN- γ ($n = 1$), IL-10 ($n = 2$), and IL-1 β ($n = 3$). To avoid spurious results, only studies examining CRP and IL-6 were subjected to meta-analysis because they have been examined in 5 or more studies. Finally, 1/3 of the studies also reported measures of neuroendocrine functioning, such as salivary cortisol or glucocorticoid receptor sensitivity.

3.1. Early life adversity and inflammation using circulating markers

Table 2 summarizes the studies measuring any circulating markers of inflammation, their methods, and results. A total of 14 studies, with $k = 20$ analyses, were included in the meta-analysis. Nine studies examined associations between early life adversity and CRP (Baldwin et al., 2018; Chen et al., 2013; Cicchetti et al., 2015; David et al., 2017; Goosby et al., 2015; Hadley and Decaro, 2014; Miller and Cole, 2012; Tyrka et al., 2015; Walsh et al., 2016) and seven examined associations between early life adversity and IL-6 (Bücker et al., 2015; Chen et al., 2013; Kılıç et al., 2017; Miller and Chen, 2010; Miller and Cole, 2012;

Riis et al., 2016; Walsh et al., 2016).

C-reactive protein. A total of 9 studies, representing data from 4692 youth, with $k = 12$ analyses, were included in the meta-analysis between CRP and early life adversity. Five of these studies examined multiple types of adversity (i.e., physical and sexual abuse, emotional abuse, neglect, family psychopathology, domestic violence, bullying, low SES, or parental separation). One study examined discrimination and three studies examined socioeconomic or poverty status. One study (David et al., 2017) examined two separate types of ELS (SES and maternal stress) and both analyses were included¹. The aggregated effect size was small and not significantly different from zero, $z = 0.06$, $SE = 0.04$, $95\%CI = -0.01, -0.14$, $p = .09$. Moderate heterogeneity was observed, $Q(df = 9) = 38.41$, $p < .001$, $I^2 = 76.56\%$, suggesting that there are moderators of this effect. There was some evidence of publication bias, although it was minimal. Fig. 2 depicts the forest plot of studies looking at early life adversity sorted by the average participant age at the time of the CRP assessment and CRP and Fig. 3 depicts the funnel plot illustrating minimal publication bias across these studies.

Moderators of the association between early life adversity and CRP. Given the heterogeneity observed, all proposed moderators were explored. Type of trauma exposure, reporter of trauma, tissue type, age of participant, and statistical adjustment for age, sex, and BMI were all non-significant moderators. However, the moderation analyses revealed a qualitatively interesting pattern of results by age that this analysis is likely underpowered to detect given the small sample size. Specifically, the association between adversity and CRP appears to be significant and positive during infancy and adolescence, $z = 0.33$, $SE = 0.10$, $p = .002$, $95\%CI[0.13,0.54]$ and $z = 0.06$, $SE = 0.02$, $p = .02$, $95\%CI[0.01,0.10]$ respectively, and negative during early childhood, $z = -0.07$, $SE = 0.03$, $p = .007$, $CI95\%[-0.13,-0.02]$. Fig. 4 uses a violin plot to illustrate the association between adversity and CRP by age group.

Interleukin-6. A total of 7 studies, representing data from 791 youth,

¹ The RE model was also run with only one of the analyses (SES and CRP) from David et al., 2017. The effect size was attenuated to $z = 0.05$, $SE = 0.03$, $p = .17$, $95\%CI[-0.02,0.11]$.

Table 3
Childhood adversity and inflammation using stimulated cytokine production.

Study	Sample size	Age	Health status	Early life stress	Cells stimulated	Pathogen	Inflammatory outcomes	Main result
Wright et al. (2004)	114	2	at risk for asthma or allergy	Caregiver stress	PBMC	dust mite antigen; cockroach extract; phytohemagglutinin	IFN- γ ; TNF- α ; IL-10; IL-13	<ul style="list-style-type: none"> (-) Associated with lower IFN-γ to phytohemagglutinin (+) Associated with higher TNF-α responses to all pathogens; not associated with IL-10 or IL-13
Ramratnam et al. (2017)	419	3	at risk for respiratory disorder	Maternal stress; maternal depression; composite of stress and depression; measured prenatally, child age 1, 2, and 3	PBMC	rhinovirus; respiratory syncytial virus; polyclonal stimulus; antigenic stimulus; cockroach extract, dust mite extract; CD3/aCD28 monoclonal antibody; phytohemagglutinin/tetanus toxoid	IFN- γ ; IL-4; IL-5; IL-13; examined separately	<ul style="list-style-type: none"> (-) Composite during prenatal and first year of child's life associated with lower Th2 cytokine responses to tetanus toxoid, phytohemagglutinin, CD3/aCD28 monoclonal antibody (\emptyset) Not associated with Th1 cytokine responses to rhinovirus and respiratory syncytial virus (+) Associated with greater IL-6
Azad et al. (2012)	267	8 to 10	asthma	Family SES	PBMC	LPS	IL-6	<ul style="list-style-type: none"> (+) Childhood SES associated with greater Th1 and Th2 (\emptyset) Childhood SES not associated with inflammatory composite (+) Family stress associated with higher inflammatory composite (\emptyset) Family stress not associated with Th1 or Th2
Chen et al. (2017)	150	9 to 17	diagnosed asthma	Childhood SES; family relationship stress	PBMC	PMA/INO; Poly I:C	Th1 composite (IFN- γ ; IL-10); Th2 composite (IL-2, IL-4, IL-5, IL-13); inflammatory composite (IL-1beta, IL-6, TNF- α)	<ul style="list-style-type: none"> (+) Low SES was associated with greater stimulated production of IL-5 and IFN-γ
Chen et al. (2003)	30	13-18	Adolescents with persistent asthma	Low neighborhood SES and cumulative life stress	PBMC	phorbol myristate acetate (PMA 25 ng/ml) ionomycin (INO 1 M/ml)	IL-4, IL-5, and IFN- γ	<ul style="list-style-type: none"> (-) Associated with lower IFN-γ (\emptyset) Not associated with TNF-α (+) Associated with greater IL-6 and decreased sensitivity to GCs
Ayaydin et al. (2016)	43	13 to 18	PTSD	Sexual abuse	PBMC	PMA/INO	IFN- γ ; TNF- α	
Ehrlich et al. (2016)	147	15 to 19	at risk for depression	Composite based on whether participants were born to a teenage mother, experienced parent death or parental separation, had parents with an affective illness of parents or came from low family SES backgrounds	monocytes	LPS	IL-6; GC sensitivity	<ul style="list-style-type: none"> (+) Harsh family climate associated with increasing stimulated production of IL-6 over time
Miller and Chen (2010)	135	17-19	Women at risk for affective disorders	Harsh family climate and episodic recent stressors	White blood cells	LPS	IL-6	<ul style="list-style-type: none"> (\emptyset) Harsh family climate not associated with baseline stimulated IL-6 (+) Harsh family climate associated with increasing stimulated production of IL-6 over time

Note: PMA = phorbol myristate acetate, INO = ionomycin, PBMC = peripheral blood mononuclear cells, LPS = Lipopolysaccharide.

with $k = 8$ analyses, were included in the meta-analysis between early life adversity and IL-6. Fig. 5 depicts a forest plot of studies looking at early life adversity and IL-6 sorted by the average participant age at the time of the IL-6 assessment. Three studies examined multiple types of adversity (e.g., index trauma, parental separation, SES, family psychopathology, physical, sexual, and emotional abuse, neglect). Two studies examined family dynamics (i.e., parenting stress and harsh family environment), one study examined low SES, and one study examined sexual abuse. The aggregated effect size was non-significant, $z = 0.06$, $SE = 0.12$, $95\% CI = -0.17 - 0.30$, $p = .59$. High levels of heterogeneity were observed, $Q (df = 6) = 57.46$, $p < .001$, $I^2 = 92.02\%$, suggesting that there may be important moderators to consider in this effect. There was some evidence of publication bias. Fig. 6 depicts the funnel plot illustrating publication bias in studies reporting IL-6 outcomes.

Moderators of the association between early life adversity and IL-6. All proposed moderators were explored given the high degree of heterogeneity observed. All moderators were non-significant (i.e., age of participant, statistical adjustment for age, sex, and BMI, type of trauma exposure, reporter of trauma, and tissue type).

3.2. Early life adversity and inflammation using stimulated cytokine production

We identified 8 studies that have investigated the association between early life adversity and inflammatory processes using stimulated cytokine production in vitro with mixed results (Ayaydin et al., 2016; Azad et al., 2012; Chen et al., 2003, 2017; Ehrlich et al., 2016; Miller and Chen, 2010; Ramratnam et al., 2017; Wright et al., 2004). These studies could not be subjected to meta-analysis due to the significant heterogeneity across studies in the immune cells stimulated, stimulants used, and cytokines measured. Table 3 summarizes each of these studies, their methods, and results. Of the 8 studies published in this area, 6 observed a positive association between early adversity and at least one measure of in vitro production of inflammatory cytokines (Azad et al., 2012; Chen et al., 2017, 2003; Ehrlich et al., 2016; Miller and Chen, 2010; Wright et al., 2004), while three studies observed negative associations between early adversity and in vitro production of pro-inflammatory cytokines (Ayaydin et al., 2016; Ramratnam et al., 2017; Wright et al., 2004). The methodological heterogeneity across these studies may have contributed to some of these mixed results, and few conclusions can be drawn from comparisons across these studies at present.

4. Discussion

To date, this is the first meta-analysis focused specifically on early life adversity and inflammation in pediatric samples. Results from the meta-analysis illustrate the current state of the field and provide preliminary evidence for understanding the association between adversity and inflammatory processes in youth. Of note, only circulating levels of CRP and IL-6 were measured consistently enough across studies to qualify for quantitative analysis. The effect sizes for the association between early life adversity and both CRP and IL-6 were small, and non-significant, although qualitative examination of these effects by the age of the samples suggests that effects may be stronger in infancy and adolescence, and quite reliably positive in adolescence. From our descriptive analysis of stimulated cytokine production in vitro, early life adversity also appears to be related to greater production of cytokines by immune cells following in vitro stimulation, although these studies were also quite mixed in both methods and results. These results should be interpreted with caution because the studies that have been published in this research area are limited in number and quite heterogeneous in study design, population, and inflammatory measures.

Contrary to our hypotheses, the associations between early life adversity exposure on circulating IL-6 and CRP were very small in

magnitude. The effect sizes for IL-6 and CRP were both 0.06, and non-significant. This finding contrasts with the also small, but significant, effect sizes observed in a meta-analysis of similar studies in adult samples, specifically $z = 0.10$ for CRP, $z = 0.08$ for IL-6, and $z = 0.23$ for TNF- α (Baumeister et al., 2016). Importantly, our confidence intervals were wider, and there were too few studies that measured TNF- α (the largest effect in adults) in pediatric populations to subject to meta-analysis. Taken together, there are two possible explanations for the pattern of associations observed in these pediatric studies, one in which dysregulated immune function measured via circulating inflammatory markers does not emerge until later in human development, and one that suggests sensitive periods of immune development that warrant further investigation in the context of early adversity.

In the first scenario, early life adversity may exert proinflammatory effects on immune cells throughout development that are only reliably observed when immune cells are stimulated in vitro, but not necessarily when measured in circulation. This may happen because increasing stress during childhood is associated with parallel increases in activity of the HPA-axis and its end-product, cortisol (Kuhlman et al., 2016, 2018a). When cortisol binds to glucocorticoid receptors in healthy immune cells, the production of inflammatory cytokines is inhibited (Barnes, 1998; Waage et al., 1990). Thus, upregulations in the HPA-axis may be masking the pro-inflammatory phenotype in children as measured via circulating markers. Indeed, the HPA-axis is socially regulated by caregivers during much of childhood such that youth exhibit attenuated HPA-axis activity around supportive caregivers (Gunnar and Donzella, 2002) while youth exposed to maltreatment and neglect exhibit elevated concentrations of cortisol throughout the day (Dozier et al., 2006; Tarullo and Gunnar, 2006). Thus, children exposed to high early life adversity may exhibit lower circulating markers of inflammation as a function of the inhibitory effect elevated circulating glucocorticoids have on the system. This may also explain why a more consistent pattern of exaggerated cytokine production is observed in studies using in vitro stimulation of immune cells, where the influence of glucocorticoids on production of cytokines is either missing or tightly controlled and evaluated. Adolescence is an important turning point for many of these processes in part because the HPA-axis is substantially altered during pubertal development (Gunnar and Quevedo, 2007; Tarullo and Gunnar, 2006), and the influence of caregivers on regulation of the axis is reduced; for example, adolescents exposed to trauma and maltreatment do not as consistently exhibit elevated diurnal cortisol throughout the day (Kuhlman et al., 2015). Consistent with this idea, adolescents exposed to harsh family environments also appear to have immune cells that are less sensitive to the inhibitory effects of glucocorticoids over time (Miller and Chen, 2010). As these glucocorticoid resistant cells accumulate over time, circulating measures of inflammatory proteins are more likely to be observed. These observations underscore the importance of measuring glucocorticoid concentrations in addition to inflammatory markers whenever possible, yet, only one third of the published studies to our knowledge have included an index of HPA-axis functioning in addition to their inflammatory index. The field would greatly benefit if future studies in children simultaneously measured cortisol when assessing inflammatory markers in order to account for whether null associations between early life adversity and inflammation are accounted for by elevated cortisol in exposed youth. Adolescence is also a likely time for proinflammatory phenotypes to emerge in circulating markers of immune function due to increases in risky behaviors, such as smoking, lack of exercise, and unhealthy eating habits that contribute to weight gain (Raposa et al., 2014) as well as impulsive behaviors that increase stress exposure (Hanson et al., 2015; Lovallo, 2013; Rudolph et al., 2000; Rudolph and Hammen, 2003). These risky behaviors may be particularly likely to occur during adolescence given the increase in psychosocial stress exposure that occurs during this phase of development (Rudolph and Hammen, 2003) and decreasing supervision of behavior by adults. Thus, as children develop into young adults there

are multiple biological and behavioral inputs into the immune system that contribute to the production and regulation of inflammation that lead to more reliable elevations in circulating inflammatory markers among at risk populations. This is an important possibility because it introduces a great deal of opportunity for prevention in youth populations.

Alternatively, while age was not a statistically significant moderator, positive associations between early life adversity and inflammation were observed most robustly within infancy and late childhood/adolescent samples, but not in early childhood samples (e.g., Fig. 4). This observation underscores the importance of taking development into account in future studies of inflammatory processes in children, and further supports theoretical frameworks that see infancy and adolescence as sensitive periods for immune development (Kuhlman et al., 2017). That being said, a very small number of studies have been conducted in infancy or early childhood, which leaves us with very little data speaking to whether the association between early life adversity and elevated markers of inflammation is linear or non-linear across development.

From the limited number of studies looking at in vitro stimulation of pro-inflammatory cytokines, there is more consistent evidence for a positive association between early adversity exposure and stimulated cytokine production, although the methodological approaches and subsequent findings have been quite mixed. As a result of this heterogeneity, we were unable to summarize these studies quantitatively, but rather provide a qualitative synthesis of their findings. Together these studies portray a complex story about the potential effects of early adversity on stimulated production of inflammatory cytokines. There may be several reasons for these mixed findings, including the different stimulants used to evoke an inflammatory response, specific cytokines assessed and their role in pathogen defense, the type of adversity exposure, and the age of the sample. For instance, across studies, stimulants used included LPS, PMA/INO, rhinovirus, dust mite extract, cockroach extract, and tetanus toxoid. Similarly, a range of cytokines have been assessed, and while some studies focused on a single cytokine (Azad et al., 2012; Ehrlich et al., 2016), other studies assessed multiple cytokines, with some of these studies aggregating across cytokines (Chen et al., 2017) and others examining each cytokine separately (Ramratnam et al., 2017). It should also be noted that all of these studies focused on youth with or at risk for a physical or psychiatric disorder and findings may differ for otherwise healthy samples of youth. Lastly, studies varied in the types of adversities assessed as well as the age of the participants at the time of the blood collection and in vitro stimulation assay, ranging from toddlerhood to adolescence (i.e., 2–19 years). Although assessing various stressors and focusing on different developmental stages can provide a better understanding of differential stressor and timing effects (see Kuhlman et al., 2017 for review), currently there are too few studies to make any definitive conclusions.

Interest in the role of early life adversity in inflammatory processes has increased since the first study in this area was published thirty years ago (Dantzer and Kelley, 2007). The studies reviewed here represent a relatively large number of youth from a wide range of backgrounds and have utilized a wide range of methodological approaches. More attention to the role of different types of adversity in the development of the immune system will advance the translational value of this research over time. Of greatest importance will be to better understand the immune implications of chronic, compared with acute, forms of childhood adversity. For example, the stimulated cytokine studies varied in their operational definitions of early adversity, including sexual abuse (Ayaydin et al., 2016), maternal stress or mental health (Ramratnam et al., 2017; Wright et al., 2004), low childhood socioeconomic status (Azad et al., 2012; Chen et al., 2017), to mixed adverse childhood events (Ehrlich et al., 2016). See Kuhlman et al. (2017) for more on how different types of adversity may influence psychoneuroimmune development. There is also a need for more consistency in inflammatory

measures across studies to garner a clear understanding of the emergence of exaggerated inflammatory processes in adversity exposed youth. For example, studies examining in vitro production of pro-inflammatory cytokines tend to look at multiple outcomes, including the production of Th1 or Th2 cytokines. Th1 cytokines including IFN- γ defend against intracellular parasites such as bacteria and viruses, whereas Th2 cytokines including IL-4, IL-5, IL-13, protect against helminths and other extracellular parasites (Romagnani, 1994). Yet, no conclusions can be drawn about whether early life adversity is linked to alterations in any specific patterns of cytokine responses. Further, there was a great deal of inconsistency across studies in the adoption of best practices for research on inflammatory biomarkers, particularly with respect to what factors should be controlled for in analyses (O'Connor et al., 2009) which may differ in adult and pediatric samples. Finally, five of the studies included in our meta-analysis used salivary measures of IL-6 or CRP (Cicchetti et al., 2015; David et al., 2017; Measelle and Ablow, 2018; Riis et al., 2016; Tyrka et al., 2015) which have not yet been validated to the extent that blood-based markers have been and may not be comparable. However, given the small number of studies in the field and the importance of non-invasive measures in studies of children, we thought it important to include their results. There was no evidence that the effect of early life adversity on IL-6 or CRP was moderated by collection of these markers in blood or saliva but these analyses need to be replicated as more studies are published.

The association between early life adversity, as measured by CRP and IL-6, appears to be negligible across youth samples, was only observable in CRP among infants and adolescents, and may be more consistent in studies of stimulated cytokine production in vitro. Overall, alterations to lifelong inflammatory processes may not already be instantiated in youth exposed to early life adversity. However, future investigations of this relationship are needed that break down the role of different types of adversity exposure, their timing, and their chronicity. Further, the largest effect size of childhood adversity on inflammation in adults was for TNF- α , which has only been examined in two pediatric samples to our knowledge. The considerable associations between early life adversity and inflammatory markers in adults (Baumeister et al., 2016) may also be compensated for by interdependent systems (i.e., HPA axis), perpetuated by chronic stress exposure, or behaviorally mediated and therefore largely preventable. These associations may be most effectively interrogated in studies using in vitro stimulation of immune cells and experimental models that provoke the immune system in pediatric populations, such as using psychological stress (Steptoe et al., 2007), or vaccines (Kuhlman et al., 2018c). These paradigms may be particularly useful in pediatric populations given the generally low circulating markers of inflammation seen in young people, despite exposure to severe adversity, and therefore more sensitively inform the nuanced development of immune perturbations that follow adverse experiences.

Acknowledgements

The composition of this manuscript was made possible by the National Institute of Mental Health via a Mentored Clinical Scientist Research Career Development Award awarded to Dr. Kuhlman (K08MH112773). We would like to thank the following research assistants for their tireless help reviewing abstracts and extracting pertinent methodological data from articles: Priya Kainth, Christina Keyhey, Emily Koos, Julia Nakamura, Afrida Sara, So Yen “Jamie” Shin, and Katherine Zhuo.

References

- Ayaydin, H., Abali, O., Akdeniz, N.O., Kok, B.E., Gunes, A., Yildirim, A., Deniz, G., 2016. Immune system changes after sexual abuse in adolescents. *Pediatr. Int. Off. J. Jpn. Pediatr. Soc.* 58, 105–112. <https://doi.org/10.1111/ped.12767>.
- Azad, M.B., Lissitsyn, Y., Miller, G.E., Becker, A.B., HayGlass, K.T., Kozyrskyj, A.L., 2012.

- Influence of socioeconomic status trajectories on innate immune responsiveness in children. *PLoS One* 7, e38669. <https://doi.org/10.1371/journal.pone.0038669>.
- Baldwin, J.R., Arseneault, L., Caspi, A., Fisher, H.L., Moffitt, T.E., Odgers, C.L., Pariante, C., Ambler, A., Dove, R., Képa, A., Matthews, T., Menard, A., Sugden, K., Williams, B., Danese, A., 2018. Childhood victimization and inflammation in young adulthood: a genetically sensitive cohort study. *Brain Behav. Immun.* 67, 211–217. <https://doi.org/10.1016/j.bbi.2017.08.025>.
- Barnes, P.J., 1998. Anti-inflammatory actions of glucocorticoids: molecular mechanisms. *Clin. Sci. Lond. Engl.* 1979 (94), 557.
- Baumeister, D., Akhtar, R., Ciufolini, S., Pariante, C.M., Mondelli, V., 2016. Childhood trauma and adulthood inflammation: a meta-analysis of peripheral C-reactive protein, interleukin-6 and tumour necrosis factor- α . *Mol. Psychiatry* 21, 642. <https://doi.org/10.1038/mp.2015.67>.
- Bick, J., Nguyen, V., Leng, L., Piecychna, M., Crowley, M.J., Bucala, R., Mayes, L.C., Grigorenko, E.L., 2015. Preliminary associations between childhood neglect, MIF, and cortisol: potential pathways to long-term disease risk. *Dev. Psychobiol.* 57, 131–139. <https://doi.org/10.1002/dev.12165>.
- Bücker, J., Fries, G.R., Kapczinski, F., Post, R.M., Yatham, L.N., Vianna, P., Bogo Chies, J.A., Gama, C.S., Magalhães, P.V., Aguiar, B.W., Pfaffenseller, B., Kauer-Sant'Anna, M., 2015. Brain-derived neurotrophic factor and inflammatory markers in school-aged children with early trauma. *Acta Psychiatr. Scand.* 131, 360–368. <https://doi.org/10.1111/acps.12358>.
- Canadian Paediatric Society, 2003. Age limits and adolescents. *Paediatr. Child Health* 8, 577.
- Chen, E., Fisher, E.B., Bacharier, L.B., Strunk, R.C., 2003. Socioeconomic status, stress, and immune markers in adolescents with asthma. *Psychosom. Med.* 65, 984–992.
- Chen, E., Lee, W.K., Cavey, L., Ho, A., 2013. Role models and the psychological characteristics that buffer low-socioeconomic-status youth from cardiovascular risk. *Child Dev.* 84, 1241–1252. <https://doi.org/10.1111/cdev.12037>.
- Chen, E., Shalowitz, M.U., Story, R.E., Ehrlich, K.B., Manczak, E.M., Ham, P.J., Le, V., Miller, G.E., 2017. Parents' childhood socioeconomic circumstances are associated with their children's asthma outcomes. *J. Allergy Clin. Immunol.* 140, 828–835.e2. <https://doi.org/10.1016/j.jaci.2016.11.040>.
- Chen, E., Turiano, N.A., Mroczek, D.K., Miller, G.E., 2016. Association of reports of childhood abuse and all-cause mortality rates in women. *JAMA Psychiatry* 73, 920–927. <https://doi.org/10.1001/jamapsychiatry.2016.1786>.
- Cicchetti, D., Handley, E.D., Rogosch, F.A., 2015. Child maltreatment, inflammation, and internalizing symptoms: investigating the roles of C-reactive protein, gene variation, and neuroendocrine regulation. *Dev. Psychopathol.* 27, 553–566. <https://doi.org/10.1017/S0954579415000152>.
- Danese, A., Moffitt, T.E., Harrington, H., et al., 2009. Adverse childhood experiences and adult risk factors for age-related disease: depression, inflammation, and clustering of metabolic risk markers. *Arch. Pediatr. Adolesc. Med.* 163, 1135–1143. <https://doi.org/10.1001/archpediatrics.2009.214>.
- Danese, A., Pariante, C.M., Caspi, A., Taylor, A., Poulton, R., 2007. Childhood maltreatment predicts adult inflammation in a life-course study. *Proc. Natl. Acad. Sci.* 104, 1319–1324. <https://doi.org/10.1073/pnas.0610362104>.
- Dantzer, R., Kelley, K.W., 2007. Twenty years of research on cytokine-induced sickness behavior. *Brain Behav. Immun.* 21, 153–160. <https://doi.org/10.1016/j.bbi.2006.09.006>.
- Dantzer, R., O'Connor, J.C., Freund, G.G., Johnson, R.W., Kelley, K.W., 2008. From inflammation to sickness and depression: when the immune system subjugates the brain. *Nat. Rev. Neurosci.* 9, 46–56. <https://doi.org/10.1038/nrn2297>.
- David, J., Measelle, J., Ostlund, B., Ablow, J., 2017. Association between early life adversity and inflammation during infancy. *Dev. Psychobiol.* 59, 696–702. <https://doi.org/10.1002/dev.21538>.
- Dozier, M., Manni, M., Gordon, M.K., Peloso, E., Gunnar, M.R., Stovall-McClough, K.C., Eldredh, D., Levine, S., 2006. Foster children's diurnal production of cortisol: an exploratory study. *Child Maltreat.* 11, 189–197.
- Egger, M., Smith, G.D., Phillips, A.N., 1997. Meta-analysis: principles and procedures. *BMJ* 315, 1533.
- Ehrlich, K.B., Ross, K.M., Chen, E., Miller, G.E., 2016. Testing the biological embedding hypothesis: is early life adversity associated with a later proinflammatory phenotype? *Dev. Psychopathol.* 28, 1273–1283. <https://doi.org/10.1017/S0954579416000845>.
- Eisenberger, N.I., Berkman, E.T., Inagaki, T.K., Rameson, L.T., Mashal, N.M., Erwin, M.R., 2010. Inflammation-induced anhedonia: endotoxin reduces ventral striatum responses to reward. *Biol. Psychiatry* 68, 748–754. <https://doi.org/10.1016/j.biopsych.2010.06.010>.
- Falcone, T., Janigro, D., Lovell, R., Simon, B., Brown, C.A., Herrera, M., Myint, A.M., Anand, A., 2015. S100B blood levels and childhood trauma in adolescent inpatients. *J. Psychiatr. Res.* 62, 14–22. <https://doi.org/10.1016/j.jpsychires.2014.12.002>.
- Felitti, V.J., Anda, R.F., Nordenberg, D., Williamson, D.F., Spitz, A.M., Edwards, V., Koss, M.P., Marks, J.S., 1998. Relationship of childhood abuse and household dysfunction to many of the leading causes of death in adults: the Adverse Childhood Experiences (ACE) Study. *Am. J. Prev. Med.* 14, 245–258. [https://doi.org/10.1016/S0749-3797\(98\)00017-8](https://doi.org/10.1016/S0749-3797(98)00017-8).
- Franceschi, C., Campisi, J., 2014. Chronic inflammation (inflammaging) and its potential contribution to age-associated diseases. *J. Gerontol. Ser. A* 69, S4–S9. <https://doi.org/10.1093/gerona/glu057>.
- Gimeno, D., Kivimäki, M., Brunner, E.J., Elovainio, M., De Vogli, R., Steptoe, A., Kumari, M., Lowe, G.D.O., Rumley, A., Marmot, M.G., Ferrie, J.E., 2009. Associations of C-reactive protein and interleukin-6 with cognitive symptoms of depression: 12-year follow-up of the Whitehall II study. *Psychol. Med.* 39, 413–423. <https://doi.org/10.1017/S0033291708003723>.
- Goosby, B.J., Malone, S., Richardson, E.A., Cheadle, J.E., Williams, D.T., 2015. Perceived discrimination and markers of cardiovascular risk among low-income African American youth. *Am. J. Hum. Biol. Off. J. Hum. Biol. Council* 27, 546–552. <https://doi.org/10.1002/ajhb.22683>.
- Gunnar, M., Quevedo, K., 2007. The neurobiology of stress and development. *Annu. Rev. Psychol.* 58, 145–173. <https://doi.org/10.1146/annurev.psych.58.110405.085605>.
- Gunnar, M.R., Donzella, B., 2002. Social regulation of the cortisol levels in early human development. *Psychoneuroendocrinology* 27, 199–220. [https://doi.org/10.1016/S0306-4530\(01\)00045-2](https://doi.org/10.1016/S0306-4530(01)00045-2).
- Hadley, C., Decaro, J.A., 2014. Testing hypothesized predictors of immune activation in Tanzanian infants and children: community, household, caretaker, and child effects. *Am. J. Hum. Biol. Off. J. Hum. Biol. Council* 26, 523–529. <https://doi.org/10.1002/ajhb.22558>.
- Hagel, I., Lynch, N.R., Di Prisco, M.C., Sanchez, J., Pérez, M., 1995. Nutritional status and the IgE response against *Ascaris lumbricoides* in children from a tropical slum. *Trans. R. Soc. Trop. Med. Hyg.* 89, 562–565.
- Hanson, J.L., Nacewicz, B.M., Sutterer, M.J., Cayo, A.A., Schaefer, S.M., Rudolph, K.D., Shirliff, E.A., Pollak, S.D., Davidson, R.J., 2015. Behavioral problems after early life stress: contributions of the hippocampus and amygdala. *Biol. Psychiatry* 77, 314–323. <https://doi.org/10.1016/j.biopsych.2014.04.020>.
- Harris, R.E., 2007. Cyclooxygenase-2 (COX-2) and the inflammation of Cancer. In: *Inflammation in the Pathogenesis of Chronic Diseases, Subcellular Biochemistry*. Springer, Dordrecht, pp. 93–126. <https://doi.org/10.1007/1-4020-5688-5-4>.
- Harris, R.E., Casto, B.C., Harris, Z.M., 2014. Cyclooxygenase-2 and the inflammation of breast cancer. *World J. Clin. Oncol.* 5, 677–692. <https://doi.org/10.5306/wjco.v5.i4.677>.
- Hedges, L.V., Vevea, J.L., 1998. Fixed-and random-effects models in meta-analysis. *Psychol. Meth.* 3, 486.
- Higgins, J.P.T., Thompson, S.G., 2002. Quantifying heterogeneity in a meta-analysis. *Stat. Med.* 21, 1539–1558. <https://doi.org/10.1002/sim.1186>.
- Horn, S., Chiang, J., Bower, J., Kuhlman, K., 2017. Methodological approaches to the study of neuroendocrine and inflammatory biomarkers of childhood trauma: a systematic review. *Biol. Psychiatry* 81, S395–S396. <https://doi.org/10.1016/j.biopsych.2017.02.704>.
- Kalmakis, K.A., Chandler, G.E., 2015. Health consequences of adverse childhood experiences: a systematic review. *J. Am. Assoc. Nurse Pract.* 27, 457–465. <https://doi.org/10.1002/2327-6924.12215>.
- Kelly-Irving, M., Lepage, B., Dedieu, D., Bartley, M., Blane, D., Grosclaude, P., Lang, T., Delpierre, C., 2013. Adverse childhood experiences and premature all-cause mortality. *Eur. J. Epidemiol.* 28, 721–734. <https://doi.org/10.1007/s10654-013-9832-9>.
- Kessler, R.C., McLaughlin, K.A., Green, J.G., Gruber, M.J., Sampson, N.A., Zaslavsky, A.M., Aguilar-Gaxiola, S., Alhamzawi, A.O., Alonso, J., Angermeyer, M., Benjet, C., Bromet, E., Chatterji, S., de Girolamo, G., Demeytneare, K., Fayyad, J., Florescu, S., Gal, G., Gureje, O., Haro, J.M., Hu, C., Karam, E.G., Kawakami, N., Lee, S., Lépine, J.-P., Ormel, J., Posada-Villa, J., Sagar, R., Tsang, A., Üstün, T.B., Vassilev, S., Viana, M.C., Williams, D.R., 2010. Childhood adversities and adult psychopathology in the WHO World Mental Health Surveys. *Br. J. Psychiatry* 197, 378–385. <https://doi.org/10.1192/bjp.bp.110.080499>.
- Kılıç, S., Özlem, K., Murat, T., 2017. Inflammatory parameters in sexually abused children. *Saudi Med. J.* 38, 1213–1218. <https://doi.org/10.15537/smj.2017.12.21463>.
- Koenig, W., Sund, M., Fröhlich, M., Fischer, H.-G., Löwel, H., Döring, A., Hutchinson, W.L., Pepys, M.B., 1999. C-Reactive Protein, a sensitive marker of inflammation, predicts future risk of coronary heart disease in initially healthy middle-aged men: results from the MONICA (Monitoring Trends and Determinants in Cardiovascular Disease) Augsburg Cohort Study, 1984 to 1992. *Circulation* 99, 237–242. <https://doi.org/10.1161/01.CIR.99.2.237>.
- Korkeila, J., Vahtera, J., Korkeila, K., Kivimäki, M., Sumanen, M., Koskenvuo, K., Koskenvuo, M., 2010. Childhood adversities as predictors of incident coronary heart disease and cerebrovascular disease. *Heart* 96, 298–303. <https://doi.org/10.1136/hrt.2009.188250>.
- Kuhlman, K.R., Chiang, J.J., Horn, S., Bower, J.E., 2017. Developmental psychoneuroendocrine and psychoneuroimmune pathways from childhood adversity to disease. *Neurosci. Biobehav. Rev.* 80, 166–184. <https://doi.org/10.1016/j.neubiorev.2017.05.020>.
- Kuhlman, K.R., Geiss, E.G., Vargas, I., Lopez-Duran, N.L., 2015. Differential associations between childhood trauma subtypes and adolescent HPA-axis functioning. *Psychoneuroendocrinology* 54, 103–114. <https://doi.org/10.1016/j.psyneuen.2015.01.020>.
- Kuhlman, K.R., Repetti, R.L., Reynolds, B.M., Robles, T.F., 2018a. Interparental conflict and child HPA-axis responses to acute stress: insights using intensive repeated measures. *J. Fam. Psychol.* <https://doi.org/10.1037/fam0000437>.
- Kuhlman, K.R., Repetti, R.L., Reynolds, B.M., Robles, T.F., 2016. Change in parent-child conflict and the HPA-axis: Where should we be looking and for how long? *Psychoneuroendocrinology* 68, 74–81. <https://doi.org/10.1016/j.psyneuen.2016.02.029>.
- Kuhlman, K.R., Robles, T.F., Bower, J.E., Carroll, J.E., 2018b. Screening for childhood adversity: the what and when of identifying individuals at risk for lifespan health disparities. *J. Behav. Med.*
- Kuhlman, K.R., Robles, T.F., Dooley, L.N., Boyle, C.C., Hayden, M.D., Bower, J.E., 2018c. Within-subject associations between inflammation and features of depression: using the flu vaccine as a mild inflammatory stimulus. *Brain Behav. Immun.* 69, 540–547. <https://doi.org/10.1016/j.bbi.2018.02.001>.
- Lovall, W.R., 2013. Early life adversity reduces stress reactivity and enhances impulsive behavior: implications for health behaviors. *Int. J. Psychophysiol. Off. J. Int. Organ. Psychophysiol.* 90, 8–16. <https://doi.org/10.1016/j.ijpsycho.2012.10.006>.
- Matthews, K.A., Chang, Y.-F., Thurston, R.C., Bromberger, J.T., 2014. Child abuse is related to inflammation in mid-life women: role of obesity. *Brain Behav. Immun.* 36, 29–34. <https://doi.org/10.1016/j.bbi.2013.09.013>.

- Measelle, J., Ablow, J., 2018. Contributions of early adversity to pro-inflammatory phenotype in infancy: the buffer provided by attachment security. *Attach. Hum. Dev.* 20, 1–23. <https://doi.org/10.1080/14616734.2017.1362657>.
- Miller, A.H., Raison, C.L., 2016. The role of inflammation in depression: from evolutionary imperative to modern treatment target. *Nat. Rev. Immunol.* 16, 22–34. <https://doi.org/10.1038/nri.2015.5>.
- Miller, G.E., Chen, E., 2010. Harsh family climate in early life presages the emergence of a proinflammatory phenotype in adolescence. *Psychol. Sci.* 21, 848–856. <https://doi.org/10.1177/0956797610370161>.
- Miller, G.E., Chen, E., Parker, K.J., 2011. Psychological stress in childhood and susceptibility to the chronic diseases of aging: moving toward a model of behavioral and biological mechanisms. *Psychol. Bull.* 137, 959–997. <https://doi.org/10.1037/a0024768>.
- Miller, G.E., Cole, S.W., 2012. Clustering of depression and inflammation in adolescents previously exposed to childhood adversity. *Biol. Psychiatry Endocrinol. Epigen. Extinction Early Life Traumatization* 72, 34–40. <https://doi.org/10.1016/j.biopsych.2012.02.034>.
- Mogensen, T.H., 2009. Pathogen recognition and inflammatory signaling in innate immune defenses. *Clin. Microbiol. Rev.* 22, 240–273. <https://doi.org/10.1128/CMR.00046-08>.
- Moher, D., Liberati, A., Tetzlaff, J., Altman, D.G., Group, T.P., 2009. Preferred Reporting Items for Systematic Reviews and Meta-Analyses: The PRISMA Statement 6. <https://doi.org/10.1371/journal.pmed.1000097>.
- O'Connor, M.-F., Bower, J.E., Cho, H.J., Creswell, J.D., Dimitrov, S., Hamby, M.E., Hoyt, M.A., Martin, J.L., Robles, T.F., Sloan, E.K., Thomas, K.S., Irwin, M.R., 2009. To assess, to control, to exclude: effects of biobehavioral factors on circulating inflammatory markers. *Brain. Behav. Immun.* 23, 887–897. <https://doi.org/10.1016/j.bbi.2009.04.005>.
- Phillips, R.S., Enwonwu, C.O., Okolo, S., Hassan, A., 2004. Metabolic effects of acute measles in chronically malnourished Nigerian children. *J. Nutr. Biochem.* 15, 281–288. <https://doi.org/10.1016/j.jnutbio.2003.11.006>.
- Ramratnam, S.K., Visness, C.M., Jaffee, K.F., Bloomberg, G.R., Kattan, M., Sandel, M.T., Wood, R.A., Gern, J.E., Wright, R.J., 2017. Relationships among maternal stress and depression, type 2 responses, and recurrent wheezing at age 3 years in low-income urban families. *Am. J. Respir. Crit. Care Med.* 195, 674–681. <https://doi.org/10.1164/rccm.201602-0272OC>.
- Raposa, E.B., Bower, J.E., Hammen, C.L., Najman, J.M., Brennan, P.A., 2014. A developmental pathway from early life stress to inflammation: the role of negative health behaviors. *Psychol. Sci.* 25, 1268–1274. <https://doi.org/10.1177/0956797614530570>.
- Ridker, P.M., 2003. Clinical application of C-reactive protein for cardiovascular disease detection and prevention. *Circulation* 107, 363–369. <https://doi.org/10.1161/01.CIR.0000053730.47739.3C>.
- Ridker, P.M., Cushman, M., Stampfer, M.J., Tracy, R.P., Hennekens, C.H., 1997. Inflammation, aspirin, and the risk of cardiovascular disease in apparently healthy men. *N. Engl. J. Med.* 336, 973–979. <https://doi.org/10.1056/NEJM199704033361401>.
- Riis, J.L., Granger, D.A., Minkovitz, C.S., Bandeen-Roche, K., DiPietro, J.A., Johnson, S.B., 2016. Maternal distress and child neuroendocrine and immune regulation. *Soc. Sci. Med.* 1982 (151), 206–214. <https://doi.org/10.1016/j.socscimed.2015.12.043>.
- Romagnani, S., 1994. Lymphokine production by human T cells in disease states. *Annu. Rev. Immunol.* 12, 227.
- Rudolph, K.D., Hammen, C., 2003. Age and gender as determinants of stress exposure, generation, and reactions in youngsters: a transactional perspective. *Child Dev.* 70, 660–677. <https://doi.org/10.1111/1467-8624.00048>.
- Rudolph, K.D., Hammen, C., Burge, D., Lindberg, N., Herzberg, D., Daley, S.E., 2000. Toward an interpersonal life-stress model of depression: the developmental context of stress generation. *Dev. Psychopathol.* 12, 215–234.
- Slopen, N., Koenen, K.C., Kubzansky, L.D., 2012. Childhood adversity and immune and inflammatory biomarkers associated with cardiovascular risk in youth: a systematic review. *Brain. Behav. Immun.* 26, 239.
- Steptoe, A., Hamer, M., Chida, Y., 2007. The effects of acute psychological stress on circulating inflammatory factors in humans: a review and meta-analysis. *Brain. Behav. Immun.* 21, 901–912. <https://doi.org/10.1016/j.bbi.2007.03.011>.
- Sterne, J.A.C., Egger, M., 2001. Funnel plots for detecting bias in meta-analysis: guidelines on choice of axis. *J. Clin. Epidemiol.* 54, 1046–1055. [https://doi.org/10.1016/S0895-4356\(01\)00377-8](https://doi.org/10.1016/S0895-4356(01)00377-8).
- Tarullo, A.R., Gunnar, M.R., 2006. Child maltreatment and the developing HPA axis. *Horm. Behav.* 50, 632–639. <https://doi.org/10.1016/j.yhbeh.2006.06.010>.
- Tyrka, A.R., Parade, S.H., Valentine, T.R., Eslinger, N.M., Seifer, R., 2015. Adversity in preschool-aged children: effects on salivary interleukin-1 β . *Dev. Psychopathol.* 27, 567–576. <https://doi.org/10.1017/S0954579415000164>.
- Ulmer-Yaniv, A., Djalovski, A., Yirmiya, K., Halevi, G., Zagoory-Sharon, O., Feldman, R., 2018. Maternal immune and affiliative biomarkers and sensitive parenting mediate the effects of chronic early trauma on child anxiety. *Psychol. Med.* 48, 1020–1033. <https://doi.org/10.1017/S0033291717002550>.
- Waage, A., Slupphaug, G., Shalaby, R., 1990. Glucocorticoids inhibit the production of IL 6 from monocytes, endothelial cells and fibroblasts. *Eur. J. Immunol.* 20, 2439–2443. <https://doi.org/10.1002/eji.1830201112>.
- Walsh, K., Basu, A., Werner, E., Lee, S., Feng, T., Osborne, L.M., Rainford, A., Gilchrist, M., Monk, C., 2016. Associations among child abuse, depression, and interleukin-6 in pregnant adolescents: paradoxical findings. *Psychosom. Med.* 78, 920–930. <https://doi.org/10.1097/PSY.0000000000000344>.
- Worthman, C.M., Panter-Brick, C., 2008. Homeless street children in Nepal: use of allostatic load to assess the burden of childhood adversity. *Dev. Psychopathol.* 20, 233–255. <https://doi.org/10.1017/S0954579408000114>.
- Wright, R.J., Finn, P., Contreras, J.P., Cohen, S., Wright, R.O., Staudenmayer, J., Wand, M., Perkins, D., Weiss, S.T., Gold, D.R., 2004. Chronic caregiver stress and IgE expression, allergen-induced proliferation, and cytokine profiles in a birth cohort predisposed to atopy. *J. Allergy Clin. Immunol.* 113, 1051. <https://doi.org/10.1016/j.jaci.2004.03.032>.