

UCLA

Contemporary Music Score Collection

Title

Awakening

Permalink

<https://escholarship.org/uc/item/6h01f3mj>

Author

Chendler, Yohanan

Publication Date

2020

Copyright Information

This work is made available under the terms of a Creative Commons Attribution-NonCommercial License, available at <https://creativecommons.org/licenses/by-nc/4.0/>

Yohanan Chendler

awakening

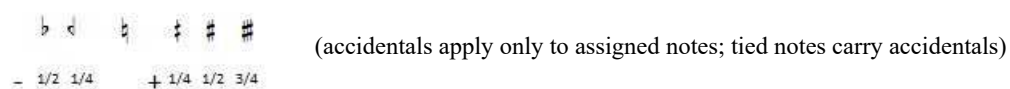
for cello solo

Performance instruction

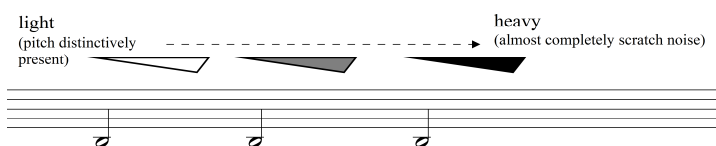
Scordatura



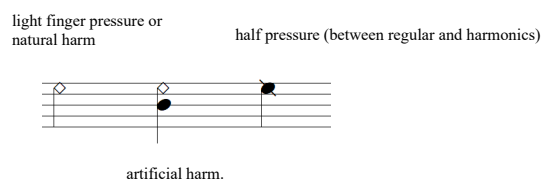
Accidentals



Bow pressure and sound distortion:



Harmonics and finger pressure



Bow speed

- VS
very slow bow - as slow as possible, still hearing sound but sound quality is very much compromised
- S
slow bow - sound quality and color starting to change
- NORM
normal bow speed - ideal bow speed you would normally use

Bow position

- L.h. fingers
- +s.t.
- s.t.
- s.t.
- p.o.
- s.p.
- s.p.
- +s.p.
- Bridge v

Bow technique

- C.L. - col legno
- 1/2C.L. - both wood and hair on the string
- HAIR - normal way of playing

Other

follow printed bowing as much as possible

• very short pause or lift. about 0.5 second

awakening

Scordatura:



Agressive, angry

♩ = 90

♩ = 60

♩ = 90

s → VS
 NORM -s.p. → s.p. → p.o. → VS -s.p.

NORM +s.p. → VS NORM -s.p. → s.p. → p.o.

♩ = 60

♩ = 90
 NORM p.o.

1/2 C.L. +s.p. → C.L. s.t. HAIR p.o.

♩ = 60

* 21♩

VS
-s.p.

IV III II III III IV +s.t.

sfff p *pp*

* exact rhythmis *ad lib.*

S
C.L.
+s.p.

VS

1/2 C.L.
s.p.

+s.t.

f *pp*

sonorous

♩ = 90

NORM
HAIR
p.o.

0.5' - 3'

sfff *ff* *f* *mf* *mp*

8va

♩ = 60
HAIR

0.5' - 3'

1/2 C.L.

0.5' - 3'

ppp

f p

VS

NORM

I II

I II

p

* gliss without changing distance between the stopped note and harmonic

♩ = 90

I

p

mf

5

sfff *mf* *ff* *mf* *p* *sfff*