

Yohanan Chendler

# awakening

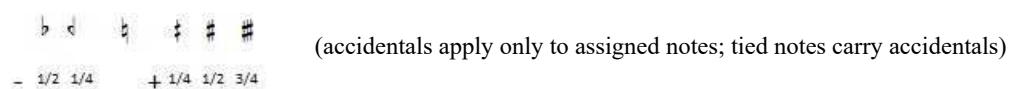
for cello solo

# Performance instruction

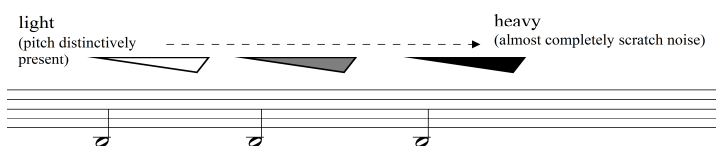
## Scordatura



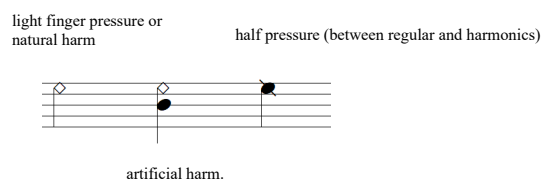
## Accidentals



## Bow pressure and sound distortion:



## Harmonics and finger pressure



## Bow speed

- VS  
very slow bow - as slow as possible, still hearing sound but sound quality is very much compromised
- S  
slow bow - sound quality and color starting to change
- NORM  
normal bow speed - ideal bow speed you would normally use

## Bow position

- L.h. fingers
  - +s.t.
  - s.t.
  - s.t.
  - p.o.
  - s.p.
  - s.p.
  - +s.p.
- Bridge v

## Bow technique

- C.L. - col legno
- 1/2C.L. - both wood and hair on the string
- HAIR - normal way of playing

## Other

follow printed bowing as much as possible

• very short pause or lift. about 0.5 second

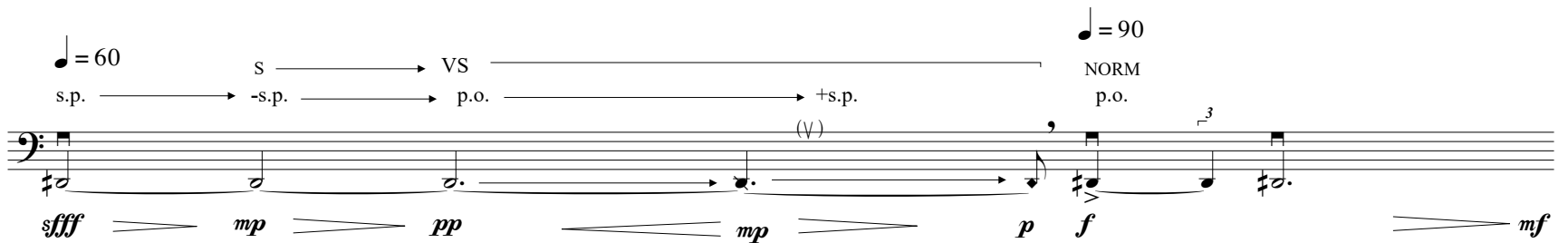
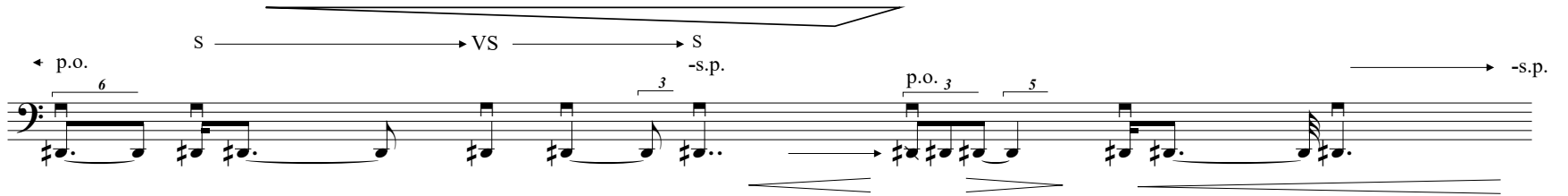
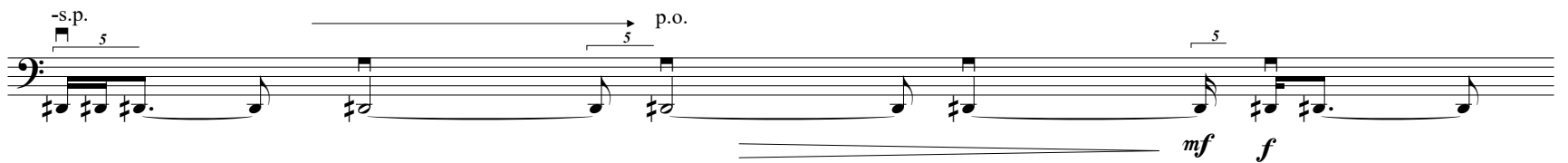
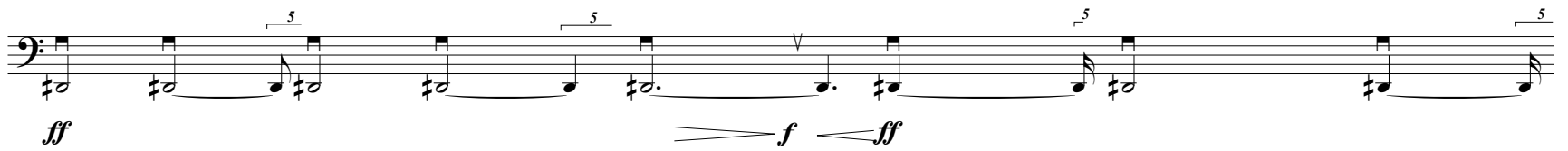
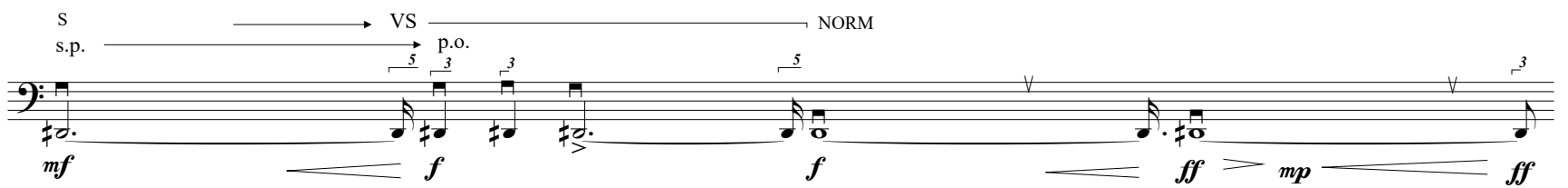
# awakening

Scordatura:



Agressive, angry

♩ = 90



s → VS  
 NORM -s.p. → s.p. → p.o. → VS -s.p.

f, f, ff, mf, ff

NORM +s.p. → VS NORM -s.p. → s.p. → p.o.

f, mf, ff, f, mp, mf

♩ = 60  
 +s.p. → p.o. → VS → s.p. III IV

f(+), ff, p

♩ = 90  
 NORM p.o. → -s.p. → p.o. → s.p. → p.o.

f, sff, f, sfp

1/2 C.L. +s.p. → C.L. s.t. → HAIR p.o.

sfp, mp, pp, p

ff

♩ = 60

\* 21♩

VS  
-s.p.

IV III II III III IV +s.t.

*sfff p* *pp*

\* exact rhythmis *ad lib.*

S  
C.L.  
+s.p.

VS

1/2 C.L.  
s.p.

+s.t.

*f* *pp*

sonorous

♩ = 90

NORM  
HAIR  
p.o.

0.5' - 3'

*sfff* *ff* *f* *mf* *mp*

8va

♩ = 60  
HAIR

0.5' - 3'

1/2 C.L.

0.5' - 3'

ppp

f p

NORM

VS

I  
II

I  
II

V

p

\* gliss without changing distance between the stopped note and harmonic

♩ = 90

I

V

p

mf

5

7

5

3

3

mf

ff

mf

p

fff