

UCSF

UC San Francisco Previously Published Works

Title

CAT-tailing as a fail-safe mechanism for efficient degradation of stalled nascent polypeptides

Permalink

<https://escholarship.org/uc/item/6nz11658>

Journal

Science, 357(6349)

ISSN

0036-8075

Authors

Kostova, Kamena K
Hickey, Kelsey L
Osuna, Beatriz A
[et al.](#)

Publication Date

2017-07-28

DOI

10.1126/science.aam7787

Peer reviewed



Published in final edited form as:

Science. 2017 July 28; 357(6349): 414–417. doi:10.1126/science.aam7787.

CAT-tailing as a fail-safe mechanism for efficient degradation of stalled nascent polypeptides

Kamena K. Kostova^{1,2}, Kelsey L. Hickey¹, Beatriz A. Osuna^{1,7}, Jeffrey A. Hussmann⁵, Adam Frost^{3,7,8,9}, David E. Weinberg^{1,*}, and Jonathan S. Weissman^{1,2,3,4,6,*}

¹Department of Cellular and Molecular Pharmacology, University of California, San Francisco, San Francisco, CA 94158, USA

²Howard Hughes Medical Institute, University of California, San Francisco, San Francisco, CA 94158, USA

³California Institute for Quantitative Biomedical Research, University of California, San Francisco, San Francisco, CA 94158, USA

⁴Center for RNA Systems Biology, University of California, San Francisco, San Francisco, CA 94158, USA

⁵Department of Microbiology and Immunology, University of California, San Francisco, San Francisco, CA 94158, USA

⁶Innovative Genomics Institute, University of California, Berkeley, Berkeley, CA 94720, USA

⁷Department of Biochemistry and Biophysics, University of California, San Francisco, San Francisco, CA 94158, USA

⁸Department of Biochemistry, University of Utah, Salt Lake City, UT, 84112, USA

⁹Chan Zuckerberg Biohub, San Francisco, CA 94158, USA

Abstract

Ribosome stalling leads to recruitment of the Ribosome Quality control Complex (RQC), which targets the partially synthesized polypeptide for proteasomal degradation through the action of the ubiquitin ligase Ltn1p. A second core RQC component, Rqc2p, modifies the nascent polypeptide by adding a Carboxy-terminal Alanine and Threonine (CAT) tail through a non-canonical elongation reaction. Here we explore the role of CATtailing in nascent-chain degradation in budding yeast. We show that Ltn1p can efficiently access only nascent chain lysines immediately proximal to the ribosome exit tunnel. For substrates without Ltn1p-accessible lysines, CAT-tailing enables degradation by exposing lysines sequestered in the ribosome exit tunnel. Thus, CAT-tails do not serve as a degron, but rather provide a fail-safe mechanism that expands the range of RQC-degradable substrates.

*Corresponding authors: jonathan.weissman@ucsf.edu, david.weinberg@ucsf.edu.

Author contribution

K.K., B.A.O., D.E.W., A.F., and J.S.W. conceived the study. All authors evaluated the results and edited the manuscript. K.K. and J.S.W. wrote the manuscript. K.K. and K.H. performed all experiments. J.A.H. performed the computational analysis.

In eukaryotic cells, when translation fails (e.g., due to a faulty mRNA or ribosome stalling) the incomplete nascent chain is targeted for proteasomal degradation (1) by a conserved ribosome-associated quality control pathway (2). This process involves disassociation of the mRNA and 40S subunit followed by recruitment of the Ribosome Quality Control Complex (RQC) (3–7) to the 60S subunit-nascent chain complex (Fig. 1A). The RQC in *Saccharomyces cerevisiae* comprises Rqc1p, Rqc2p, the E3 ubiquitin ligase Ltn1p, and Cdc48p. Rqc2p acts to both recruit Ltn1p and to facilitate tagging of partially synthesized polypeptides with a Carboxy-terminal Alanine and Threonine (CAT) tail in a non-canonical elongation reaction (CAT-tailing) (8). Previous studies established that CATtails facilitate protein aggregation when RQC-mediated degradation is compromised, leading to chaperone sequestration and proteotoxic stress (9–11). However, an Rqc2p mutant defective in CAT-tailing (Rqc2p^{mut}) fully supports Ltn1p-dependent degradation of the limited number of stalling substrates studied so far (8–11). Thus, the biological role of CATtailing in the context of a functional RQC remains undefined.

To investigate the role of CAT-tailing in nascent polypeptide degradation, we designed two stalling constructs (GFP_{20Lys} and GFP_{Lys-free}) that differed in whether or not they encoded lysines, the canonical ubiquitin acceptor (Fig. 1B, C). Both constructs contained a poly-arginine track (R12) that efficiently blocked translation (12, 13) (Fig. S1). The resulting GFP_{20Lys} nascent polypeptide was degraded in an RQC-dependent manner (Fig. 1B, Fig. S2A). In *ltn1* cells, we detected higher molecular weight CAT-tailed species, which collapsed into a discrete band upon removal of C-terminal extensions by TEV protease treatment (Fig. 1B, middle panel). GFP_{20Lys} was not further stabilized in *ltn1* cells upon proteasomal inhibition (Fig. S2C, D). Finally, consistent with previous work (8), GFP_{20Lys} was efficiently degraded in the CAT-tailing deficient *rqc2^{mut}* strain, confirming that CATtails are not necessary for degradation of this substrate (Fig. 1B).

In contrast to GFP_{20Lys}, GFP_{Lys-free} was heavily CAT-tailed even in wild-type (*wt*) cells (Fig. 1C), consistent with previous reports (10). However, these CAT-tails did not trigger degradation, since comparable amounts of GFP_{Lys-free} accumulated in *wt* cells and RQC deletions strains (Fig. 1C, Fig. S2B). Proteasome inhibition did not lead to additional substrate stabilization (Fig. 1D), arguing that CAT-tails do not serve as a degron and that the presence of lysines is a key requirement for nascent polypeptide degradation.

Cryo-electron microscopy structures of Ltn1p bound to the 60S subunit have revealed that the RING domain of Ltn1p, which is required for ubiquitin transfer, is held in close proximity to the ribosome exit tunnel (14, 15). Thus, the position of lysines along the nascent polypeptide may determine the ability of Ltn1p to ubiquitinate them. Indeed, comparing three stalling constructs that differed only in the number of amino acids between the stalling site and the most C-terminal lysine of GFP (Fig. 2A) revealed that the construct with a short (37 amino acids) linker was robustly degraded, but constructs with extended linkers (51 and 75 amino acids) were increasingly resistant to RQC-mediated degradation.

These results suggest that the efficient RQC-dependent degradation of nascent polypeptides requires the presence of lysines in proximity to the Ltn1p RING domain. To further explore this idea, we designed stalling constructs with four lysines in an unstructured region

(3xFLAG tag) that were systematically displaced from the R12 stalling site by 0, 10, 20, 40, or 80 amino acids of neutral XTEN linker (16) (XTEN0-80, respectively) (Fig. 2B, Fig. S3). For these constructs, the four lysines will be either sequestered in (XTEN0), emerging from (XTEN10, XTEN20), or past (XTEN40, XTEN80) the ribosome exit tunnel (Fig. S5A). Initially, we used the relative degradation of the constructs as a proxy for Ltn1p's ability to ubiquitinate the lysines.

In contrast to previous RQC substrates (8), XTEN0 was efficiently degraded only in cells capable of CAT-tailing (Fig. 2B, Fig. S5B), in an Ltn1p-dependent manner (Fig. S4A). Rqc2p^{mut} did not rescue degradation even when overexpressed (Fig. S4B), suggesting that the defect was caused by the lack of CAT-tailing. Similar behaviors were seen for analogous constructs based on yeast His3p (Fig. S6). These data argue that CAT-tail elongation pushes sequestered lysines out of the exit tunnel making them available for Ltn1p-mediated ubiquitination, as hypothesized (2, 17).

Compared to XTEN0, degradation of XTEN10 and XTEN20 became less dependent on CAT-tailing (Fig. 2B). Critically, when the lysines were positioned past a certain distance (XTEN40 and XTEN80), the substrates were completely resistant to RQC-mediated degradation. Consistent with these degradation results, we observed Ltn1p-dependent ubiquitination when lysines were positioned in the exit tunnel or within the Ltn1p-accessible region, and no ubiquitination was observed when the lysines were past the Ltn1p-accessible window (Fig. 2C, Fig. S7, Fig. S8). In addition, we observed similar levels of ubiquitination in cells expressing wild-type or mutant Rqc2p (Fig. 2D). Taken together, these data support a model in which Ltn1p can only access a limited window of amino acids on the nascent polypeptide and that the process of CAT-tailing enables Ltn1p to gain access to lysines sequestered in the exit tunnel.

To determine the effect of sequence and structural context on Ltn1p's ability to ubiquitinate lysines, we generated GFP_{Lys-free} constructs with a 3xHA tag upstream of a single lysine positioned at different distances from the R12 stalling site (Fig. 3A, Fig. S9A). These constructs were degraded in a CAT-tail-dependent manner when the lysine was within or near the ribosome exit tunnel, but not when the lysine was 49 amino acids away. The inability of the RQC to degrade this latter substrate was not caused by steric hindrance, since positioning the lysine between two unstructured regions did not rescue degradation (Fig. 3B). The discrete position of the lysines for these constructs allowed us to refine the Ltn1p accessible window to ~12 amino acids outside the ribosome exit tunnel (Fig. 3C, D). As observed with the FLAG-based constructs, the differences in degradation were consistent with differences in Ltn1p-mediated ubiquitination of the substrates (Fig. S10, Fig. S11). Importantly, the Ltn1p accessible window defined using four lysines (Fig. 2B) was fully consistent with the refined window (Fig. S9B). Thus, the ability of Ltn1p to effectively access residues in a limited window proximal to the exit tunnel is primarily determined by the distance of the lysines from the C-terminus, rather than local sequences or structure.

Non-stop mRNAs are an important source of natural RQC substrates with lysines sequestered in the exit tunnel (2). For such messages, the ribosome translates the poly(A) tail, which appends AAA-encoded lysines to the C-terminus. The resulting lysines are likely

to be sequestered in the ribosome exit tunnel, due to the short length of yeast poly(A) tails (median 27 nucleotides) (18, 19). Indeed, degradation of non-stop GFP_{Lys-free} with a defined poly(A) tail of 30 nucleotides was dependent on CAT-tails (Fig. 3E). Therefore, CAT-tailing can expose lysines that result from translation through the poly(A) tract, allowing efficient ubiquitination and degradation of non-stop decay substrates.

Having established lysine positioning as a critical determinant of CAT-tail-dependent degradation, we next computationally evaluated the frequency with which endogenous substrates would be expected to rely on CAT-tailing for degradation. While the sites of endogenous stalling remain poorly defined, a number of processes such as mRNA fragmentation, oxidative damage (20), or stress from translation inhibitors can cause stalling at any position along a message. We therefore considered the nascent chains produced if ribosomes stall with uniform probability at each codon along every coding sequence in the yeast genome (21), and we calculated the fraction of potential stalling sites for which there are no lysines accessible to Ltn1p but at least one lysine “hidden” in the ribosome exit tunnel (Fig. S12). Based on our experimental estimates of Ltn1p’s reach (~12 amino acids) and previous measurements of the length of the ribosome exit tunnel (~35 amino acids) (22, 23), we estimate that CAT-tailing substantially increases the fraction of RQC-degradable substrates from ~60% of possible nascent chains to ~95% (Fig. 4A).

This analysis suggests that if CAT-tailing is compromised, the accumulation of non-degradable endogenous substrates will lead to growth defects. Although yeast strains with deletions of RQC components do not exhibit a growth defect in rich media (5, 9), such strains have increased sensitivity to the translation inhibitor cycloheximide (CHX) (24). In addition, deletion of mRNA decay factors (e.g., *SKI2*) stabilizes defective or truncated mRNAs, increasing the stalling burden on the cell (25). Indeed, under conditions of widespread stochastic ribosome stalling induced by CHX treatment and mRNA stabilization in a *ski2* background, *rqc2^{mut}* cells exhibited a growth defect intermediate between *wt* and RQC-deletion cells, consistent with the hypothesis that a significant fraction of the stalled nascent polypeptides depend on CAT-tailing for efficient degradation (Fig. 4B).

Collectively, our studies reveal an unanticipated feature of Ltn1p, the key ubiquitin ligase responsible for RQC-mediated degradation of incomplete nascent chains: Ltn1p is only able to efficiently access lysines that lie within a narrow window of the exit tunnel. This spatial specificity could protect the cell from collateral damage (e.g., degradation of ribosomal proteins or the translocation machinery, as well as unregulated quality control signaling (26, 27)) caused by incidental ubiquitination by Ltn1p. However, the limited reach of Ltn1p presents a challenge to the RQC machinery that must deal with a diverse range of substrates: Without a mechanism to relieve this restriction on lysine positioning, many endogenous RQC substrates would be resistant to Ltn1p-mediated degradation. Our studies reveal that, in addition to its previously described role in promoting aggregation and inducing a heat shock response (9–11), CAT-tailing acts as a fail-safe mechanism that enables the degradation of a far broader range of substrates by exposing lysines sequestered in the ribosome exit tunnel (Fig. 4C).

Supplementary Material

Refer to Web version on PubMed Central for supplementary material.

Acknowledgments

We thank P. Shen for providing the Ltn1 RING strain and E. Costa for advice on protein purification. We thank O. Brandman, M. Jost, E. Costa, C. Gross, S. Torres, M. Chan, D. Santos, N. Schirle Oakdale, P. Shen, and P. Walter for scientific input.

This work was supported by HHMI (J.S.W.), UCSF Discovery Fellowship (K.K. and B.A.O.), NIH Center for RNA Systems Biology (J.S.W.), HHMI Faculty Scholar award (A.F.), UCSF Program for Breakthrough Biomedical Research (A.F. and D.E.W.), the Searle Scholars Program (A.F.), and NIH grants 1DP2GM110772-01 (A.F.), DP5OD017895 (D.E.W.), and NIH 5R01AG041826-05 (J.S.W.). B.A.O. is a National Science Foundation Graduate Research Fellow. J.A.H. is the Rebecca Ridley Kry Fellow of the Damon Runyon Cancer Research Foundation (DRG-2262-16). K.K. is a Howard Hughes Medical Institute International Student Research fellow. A.F. is a Chan Zuckerberg Biohub investigator.

References

- Ito-Harashima S, Kuroha K, Tatematsu T, Inada T. *Genes Dev.* 2007; 21:519–24. [PubMed: 17344413]
- Brandman O, Hegde RS. *Nat Struct Mol Biol.* 2016; 23:7–15. [PubMed: 26733220]
- Brandman O, et al. *Cell.* 2012; 151:1042–54. [PubMed: 23178123]
- Verma R, Oania RS, Kolawa NJ, Deshaies RJ. *Elife.* 2013; 2:e00308. [PubMed: 23358411]
- Defenouillère Q, et al. *Proc Natl Acad Sci U S A.* 2013; 110:5046–51. [PubMed: 23479637]
- Shao S, von der Malsburg K, Hegde RS. *Mol Cell.* 2013; 50:637–648. [PubMed: 23685075]
- Shao S, Hegde RS. *Mol Cell.* 2014; 55:880–90. [PubMed: 25132172]
- Shen PS, et al. *Science.* 2015; 347
- Choe YJ, et al. *Nature.* 2016; 531:191–195. [PubMed: 26934223]
- Yonashiro R, et al. *Elife.* 2016; 5:e11794. [PubMed: 26943317]
- Defenouillère Q, et al. *J Biol Chem.* 2016; 291:12245–53. [PubMed: 27129255]
- Dimitrova LN, Kuroha K, Tatematsu T, Inada T. *J Biol Chem.* 2009; 284:10343–52. [PubMed: 19204001]
- Letzring DP, Dean KM, Grayhack EJ. *RNA.* 2010; 16:2516–28. [PubMed: 20971810]
- Malsburg, Kvd, Shao, S., Hegde, RS. *Mol Biol Cell.* 2015; 26:2168–2180. [PubMed: 25877867]
- Lyumkis D, et al. *Proc Natl Acad Sci U S A.* 2014; 111:15981–6. [PubMed: 25349383]
- Schellenberger V, et al. *Nat Biotechnol.* 2009; 27
- Simms CL, Thomas EN, Zaher HS. *Wiley Interdiscip Rev RNA.* 2017; 8
- Subtelný AO, Eichhorn SW, Chen GR, Sive H, Bartel DP. *Nature.* 2014; 508:66–71. [PubMed: 24476825]
- Koutmou KS, et al. *Elife.* 2015; 4:446–452.
- Simms CL, Hudson BH, Mosior JW, Rangwala AS, Zaher HS. *Cell Rep.* 2014; 9:1256–1264. [PubMed: 25456128]
- Engel SR, et al. *G3.* 2014; 4:389–98. [PubMed: 24374639]
- Nissen P, Hansen J, Ban N, Moore PB, Steitz TA. *Science.* 2000; 289
- Ban N, Nissen P, Hansen J, Moore PB, Steitz TA. *Science.* 2000; 289
- Alamgir M, Erukova V, Jessulat M, Azizi A, Golshani A. *BMC Chem Biol.* 2010; 10:6. [PubMed: 20691087]
- Guydosh NR, Green R. *RNA.* 2017; 23:749–761. [PubMed: 28193672]
- Juszkiewicz S, Hegde RS. *Mol Cell.* 2017:743–750. [PubMed: 28065601]
- Higgins R, et al. *Mol Cell.* 2015; 59:35–49. [PubMed: 26051182]
- Rothstein R. *Methods Enzymol.* 1991; 194:281–301. [PubMed: 2005793]

32. Longtine MS, et al. *Yeast*. 1998; 14:953–961. [PubMed: 9717241]
33. Ares M. *Cold Spring Harb Protoc*. 2012; 2012:1082–6. [PubMed: 23028070]

Author Manuscript

Author Manuscript

Author Manuscript

Author Manuscript

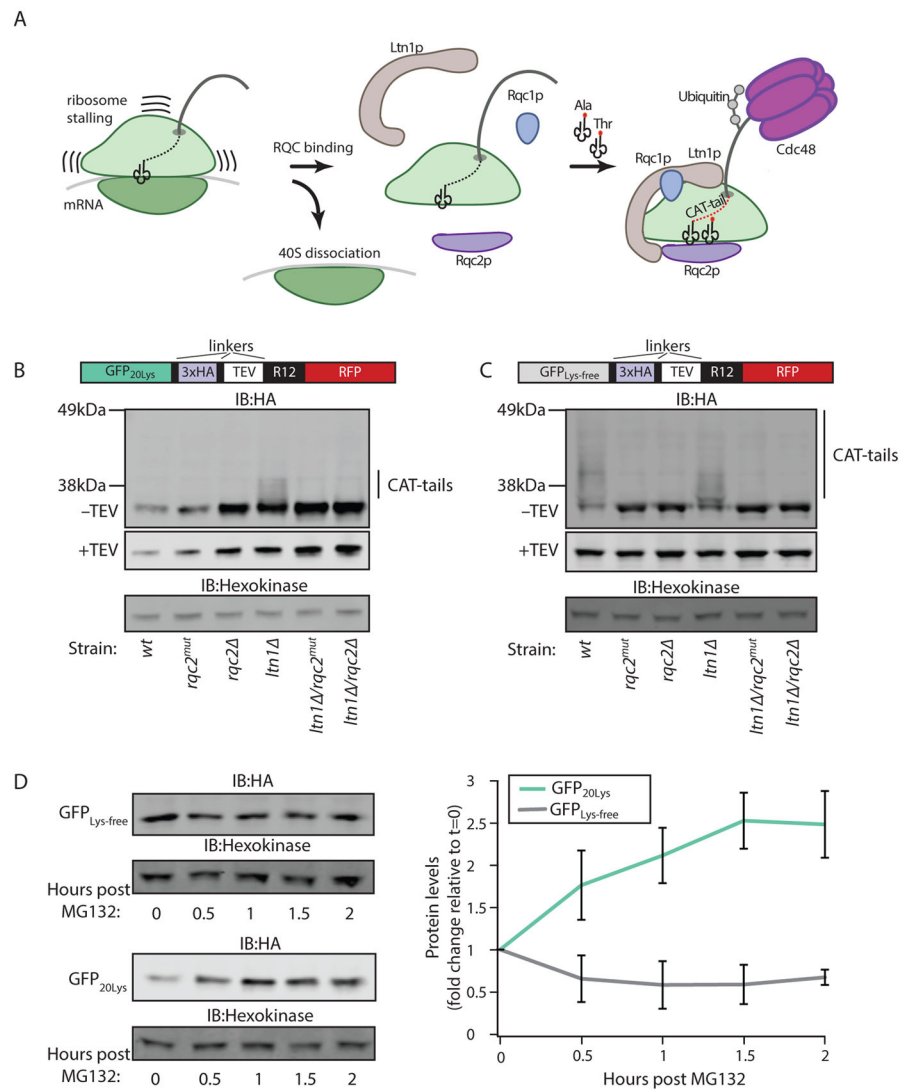


Fig. 1. Degradation of RQC substrates requires lysines

(A) Model for RQC-mediated degradation of nascent polypeptides. (B, C) Immunoblots (IBs) of stalling reporters with or without lysines in RQC deletion strains. (D) Proteasome inhibition time course for stalling constructs expressed in *pdr5* cells. The relative amount of stalling substrate (mean \pm SD, N=3) accumulating over time was visualized by IB (left) and quantified by densitometry (right).

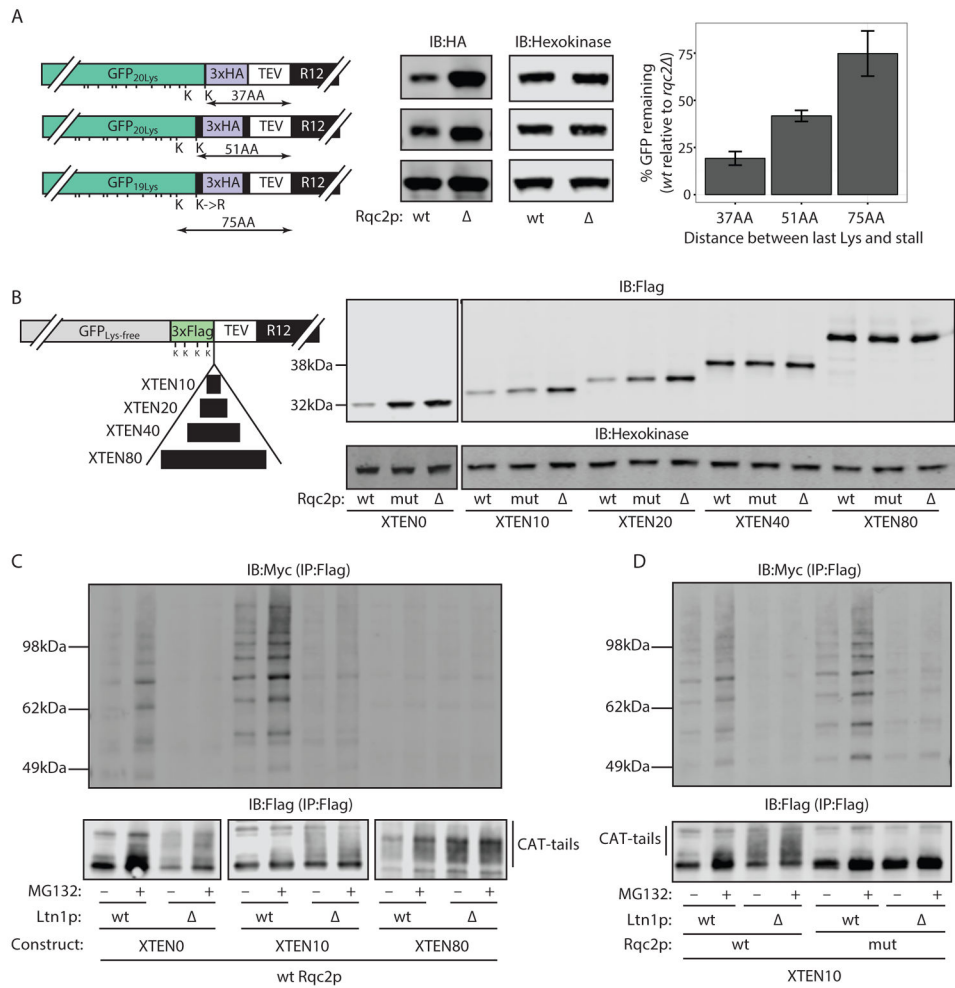


Fig. 2. Lysine positioning is critical for Ltn1p-mediated ubiquitination and proteasomal degradation
(A) IB of stalling constructs with variable number of amino acids (AA) between the most C-terminal lysine of GFP and the first arginine of the stall site. The relative amount of substrate remaining in *wt* cells relative to *rqc2* cells was quantified and normalized to a loading control (bar graph) (mean ± SD, N=3). **(B)** IB of TEV-treated XTEN constructs. **(C, D)** Denaturing immunoprecipitation (Flag IP) of XTEN 0, 10, and 80 stalling constructs from cells expressing Myc-tagged ubiquitin.

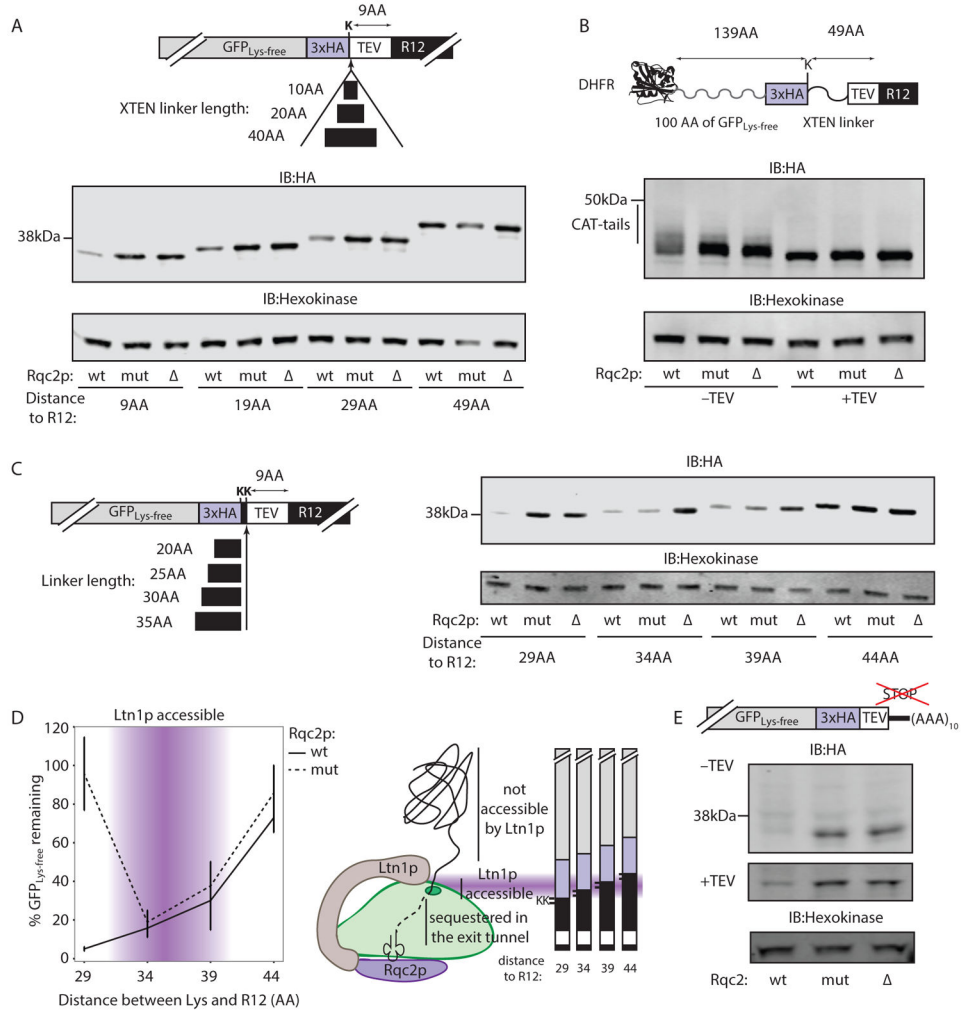


Fig. 3. The ability of Ltn1p to access lysines outside the exit tunnel is primarily determined by the distance of the lysines from the C-terminus
(A, C) IB of TEV-treated GFP_{Lys-free} stalling constructs with XTEN linkers of the indicated length inserted after the lysines. **(B)** IB of a stalling construct with a lysine positioned between two unstructured sequences. **(D)** Quantification of protein levels from the stalling constructs in **(C)** (left). Shown is the percent stalling construct remaining in *wt* or *rqc2^{mut}* cells relative to *rqc2* cells as a function of the distance between the lysines and the R12 stalling site (mean ± SD, N=3). Schematic of Ltn1p's accessible region (shaded area) (right). **(E)** IB of non-stop GFP_{Lys-free} construct.

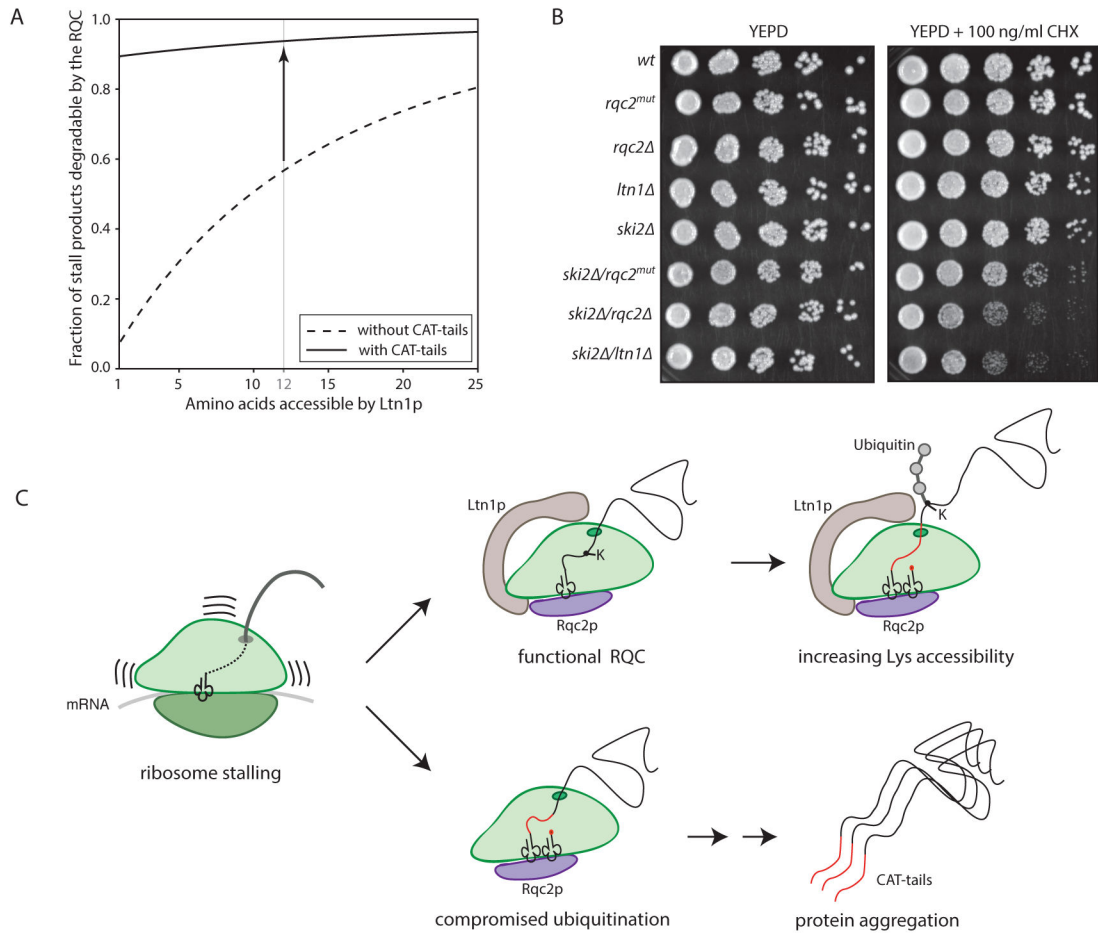


Fig. 4. CAT-tail-dependent degradation of endogenous RQC substrates

(A) Fraction of stalling positions leading to a RQC-degradable nascent polypeptide in the presence (solid line) or absence (dashed line) of CAT-tails, graphed as a function of the number of amino acids accessible to Ltn1p and assuming a fixed exit tunnel length of 35 amino acids. The arrow shows the increase in RQC-degradable substrates in the presence of CAT-tails at the estimated Ltn1p reach of 12 amino acids. (B) Growth phenotypes of RQC mutant strains in the absence or presence of cycloheximide (CHX). (C) Model for the function of CAT-tails in vivo.