

UC San Diego

UC San Diego Previously Published Works

Title

CORRIGENDUM

Permalink

<https://escholarship.org/uc/item/6qh564xt>

Journal

Journal of Climate, 28(20)

ISSN

0894-8755

Authors

Jiang, ChuanLi
Gille, Sarah T
Sprintall, Janet
et al.

Publication Date

2015-10-15

DOI

10.1175/jcli-d-15-0570.1

Peer reviewed



CORRIGENDUM

CHUANLI JIANG

Earth and Space Research, Seattle, Washington

SARAH T. GILLE AND JANET SPRINTALL

Scripps Institution of Oceanography, University of California, San Diego, La Jolla, California

KEI YOSHIMURA

University of Tokyo, Kashiwa, Japan

(Manuscript received and in final form 15 October 2013)

There are two incorrect figures in the paper by [Jiang et al. \(2012\)](#). The right panels of Figs. 5 and 6 therein indicated incorrect phases of seasonal turbulent heat fluxes owing to an error in converting from radians to months. The corrected figures appear below. The text describing the phases in the second part of the fourth paragraph on page 1478 is corrected to “The SST seasonal cycle peaks mainly in February and March ([Fig. 5a](#)), consistent with the upper 100-m XBT temperatures ([Sprintall 2003](#)). Both the seasonal cycle of air temperature ([Fig. 5b](#)) and specific humidity ([Fig. 6b](#)) peak in February, just prior to the peak ocean temperature. Unlike SST and air temperature, the air–sea temperature difference peaks from June to July ([Fig. 5c](#)). The turbulent heat fluxes peak from November to February and show a distinct dependence on latitude ([Figs. 5d](#) and [6c](#)).”

REFERENCES

- Jiang, C., S. T. Gille, J. Sprintall, K. Yoshimura, and M. Kanamitsu, 2012: Spatial variation in turbulent heat fluxes in Drake Passage. *J. Climate*, **25**, 1470–1488, doi:[10.1175/2011JCLI4071.1](https://doi.org/10.1175/2011JCLI4071.1).
- Sprintall, J., 2003: Seasonal to interannual upper-ocean variability in the Drake Passage. *J. Mar. Res.*, **61**, 27–57, doi:[10.1357/002224003321586408](https://doi.org/10.1357/002224003321586408).

Corresponding author address: ChuanLi Jiang, Earth and Space Research, 2101 4th Ave. Suite 1310, Seattle, WA 98121.
E-mail: chjiang@esr.org

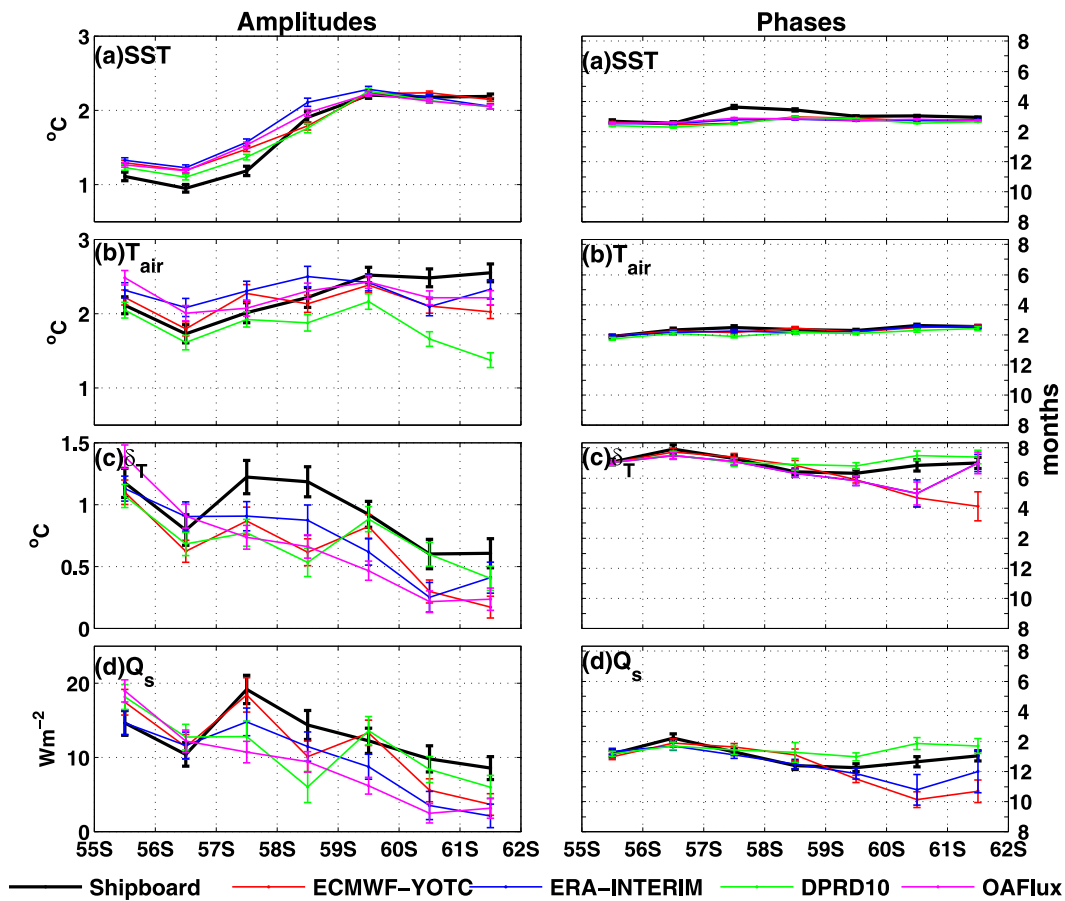


FIG. 5. The (left) amplitudes and (right) phases of the seasonal cycles of the sensible heat fluxes (Q_s) and the flux-related variables: (a) SST, (b) T_{air} , (c) air-sea temperature difference δT , and (d) sensible heat flux Q_s . Error bars denote the standard error of the means ($N = 95$). The phases indicate the month of the maximum in the annual cycle of each variable.

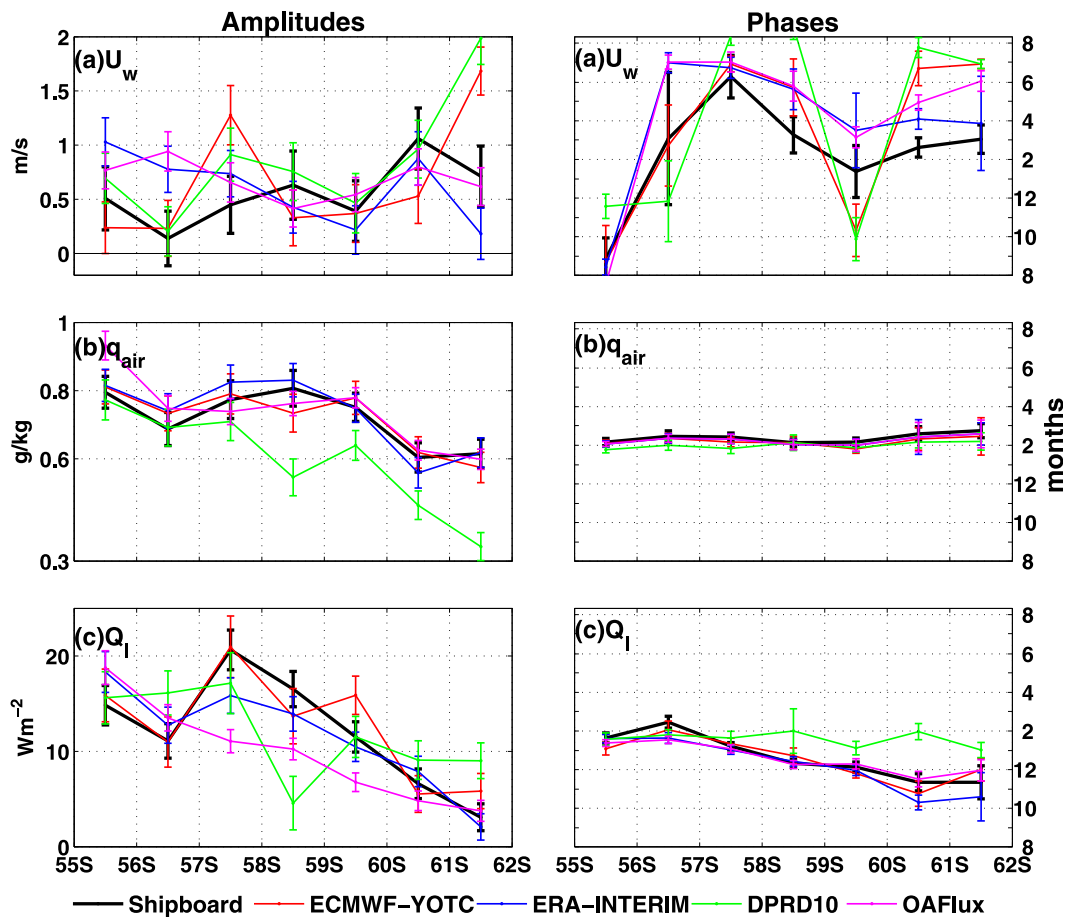


FIG. 6. As in Fig. 5, but of the latent heat fluxes (Q_1) and the flux-related variables: (a) wind speed U_w , (b) air specific humidity q_{air} , and (c) latent heat flux Q_1 .