

UC Berkeley

UC Berkeley Previously Published Works

Title

Plant-associated fungi support bacterial resilience following water limitation

Permalink

<https://escholarship.org/uc/item/6qn2j3r6>

Journal

The ISME Journal: Multidisciplinary Journal of Microbial Ecology, 16(12)

ISSN

1751-7362

Authors

Hestrin, Rachel
Kan, Megan
Lafler, Marissa
[et al.](#)

Publication Date

2022-12-01

DOI

10.1038/s41396-022-01308-6

Peer reviewed

ARTICLE OPEN



Plant-associated fungi support bacterial resilience following water limitation

Rachel Hestrin^{1,2}, Megan Kan¹, Marissa Lafler¹, Jessica Wollard¹, Jeffrey A. Kimbrel¹, Prasun Ray^{3,4}, Steven J. Blazewicz¹, Rhona Stuart¹, Kelly Craven^{4,5}, Mary Firestone⁶, Erin E. Nuccio¹ and Jennifer Pett-Ridge^{1,7}

© The Author(s) 2022

Drought disrupts soil microbial activity and many biogeochemical processes. Although plant-associated fungi can support plant performance and nutrient cycling during drought, their effects on nearby drought-exposed soil microbial communities are not well resolved. We used H₂¹⁸O quantitative stable isotope probing (qSIP) and 16S rRNA gene profiling to investigate bacterial community dynamics following water limitation in the hyphospheres of two distinct fungal lineages (*Rhizophagus irregularis* and *Serendipita bescii*) grown with the bioenergy model grass *Panicum hallii*. In uninoculated soil, a history of water limitation resulted in significantly lower bacterial growth potential and growth efficiency, as well as lower diversity in the actively growing bacterial community. In contrast, both fungal lineages had a protective effect on hyphosphere bacterial communities exposed to water limitation: bacterial growth potential, growth efficiency, and the diversity of the actively growing bacterial community were not suppressed by a history of water limitation in soils inoculated with either fungus. Despite their similar effects at the community level, the two fungal lineages did elicit different taxon-specific responses, and bacterial growth potential was greater in *R. irregularis* compared to *S. bescii*-inoculated soils. Several of the bacterial taxa that responded positively to fungal inocula belong to lineages that are considered drought susceptible. Overall, H₂¹⁸O qSIP highlighted treatment effects on bacterial community structure that were less pronounced using traditional 16S rRNA gene profiling. Together, these results indicate that fungal–bacterial synergies may support bacterial resilience to moisture limitation.

The ISME Journal (2022) 16:2752–2762; <https://doi.org/10.1038/s41396-022-01308-6>

INTRODUCTION

Drought alters plant productivity [1], soil microbial biomass [2, 3] and community composition [4, 5], greenhouse gas emissions [6], and many critical biogeochemical processes [7]. Plant–microbial mutualisms mitigate plant drought response and may aid in post-drought recovery through a variety of mechanisms [8, 9]. In particular, mutualistic root-associated fungi—such as mycorrhizal fungi, which form a symbiosis with most terrestrial plant families [10]—can support plants during drought by facilitating water transport [11], soil aggregation [12], root growth [13], plant nutrient uptake [14], photosynthesis [15, 16], and stomatal conductance [15–17]. While mycorrhizal fungi may also influence the microbial communities that mediate nutrient cycling and other processes in drought-affected soil, multipartite plant–fungal–bacterial feedbacks remain poorly quantified [9].

The soil hyphosphere—the region that surrounds fungal hyphae—is a hotspot for fungal–bacterial interactions that influence microbial community composition [18–22], nutrient cycling [20–27], and plant growth [27, 28]. Interactions between soil bacteria and plant-associated hyphae are likely shaped by resource dynamics. Plants share up to 20% of photosynthates with

their mycorrhizal symbionts [29, 30], which can rapidly transport these resources to surrounding bacteria [24, 31]. Because fungi may explore a volume of soil that is two orders of magnitude greater than the area explored by plant roots [32], they may exert a substantial effect on soil microbiome structure and function. Distinct bacterial communities form in proximity to different fungal lineages [18, 19, 31]. However, we have a limited understanding of how different plant-associated fungi may shape the soil microbiome’s response to environmental stress.

Investigation of fungal–bacterial interactions in hyphosphere soil is methodologically challenging because the hyphosphere is small, dynamic, and may not exert a detectable effect on soil microbial community composition or activity when assessed at a “bulk” scale [18]. Furthermore, a substantial proportion of soil DNA may represent inactive organisms or extracellular “relic” DNA [33, 34]. Stable isotope probing (SIP) coupled with 16S rRNA gene profiling can distinguish active organisms from those that are inactive by tracing isotope incorporation into newly synthesized microbial DNA [35, 36]. With quantitative SIP (qSIP), we can estimate taxon-specific growth based on shifts in DNA buoyant density caused by heavy isotope incorporation [37, 38]. This

¹Lawrence Livermore National Laboratory, Physical and Life Sciences Directorate, Livermore, CA, USA. ²Stockbridge School of Agriculture, University of Massachusetts, Amherst, MA, USA. ³Department of Natural Resources, University of Maryland Eastern Shore, Princess Anne, MD, USA. ⁴Plant Biology Division, Noble Research Institute, Ardmore, OK, USA. ⁵Department of Biochemistry and Molecular Biology, Oklahoma State University, Stillwater, OK, USA. ⁶Department of Environmental Science, Policy, and Management, University of California Berkeley, Berkeley, CA, USA. ⁷Life & Environmental Sciences Department, University of California Merced, Merced, CA, USA. ✉email: rhestri@umass.edu; pettridge2@llnl.gov

Received: 20 December 2021 Revised: 1 August 2022 Accepted: 9 August 2022

Published online: 9 September 2022

enables sensitive detection of actively growing taxa, even in samples where a substantial quantity of DNA belongs to dead or dormant organisms. In experimentally challenging environments like the hyphosphere, qSIP has the potential to provide novel insight into taxon-specific activity and microbial growth potential following experimental treatments.

In this study, we investigated how two plant-associated fungal lineages—the arbuscular mycorrhizal (AM) fungus *Rhizophagus irregularis* and the *Sebacinales* fungus *Serendipita bescii*—mediate bacterial growth potential following water limitation in a marginal soil planted with *Panicum hallii* (Hall's panicgrass), a model species closely related to the bioenergy crop switchgrass. Both AM and *Sebacinales* fungi associate with a wide range of plant species, including switchgrass [39–41], and support plant growth and nutrition during drought [42–44]. However, *R. irregularis* has a reduced enzymatic repertoire [45, 46] and depends largely upon host-provided C and microbial transformation of nutrient sources into bioavailable forms [27, 47, 48]. In contrast, *S. bescii* and other *Serendipita* lineages are facultative symbionts with a broader enzymatic repertoire that enables direct resource acquisition from both living plants and detritus [49–51]. We hypothesized that both fungi would mitigate the effects of moisture limitation, but that bacterial community composition and growth potential would be distinct in the soils colonized by each fungus.

MATERIALS AND METHODS

Soil collection and characterization

Soil used for this study was a Pond Creek fine sandy loam, classified as a superactive, thermic Pachic Argiustoll [52]. Soil was collected from a pasture in Caddo County, OK (35.072417/−98.303667) where switchgrass is endemic, on traditional land of the Anadarko (Nadaco) tribe and the Caddo Nation of Oklahoma. Previous work has characterized this soil as “marginal” due to its high sand content (69%), low pH (~5), and low C, N, and P content (<0.4%, <0.04%, and <6 ppm, respectively) (ref. [53]). Surface soil (0–20 cm) was collected in May 2019, transported to Livermore, CA, sieved to 2 mm, and stored at 4 °C. A soil moisture retention curve was generated from air-dried soil using a pressure plate apparatus (WP4C, METER Environment, Pullman, WA) and the nonlinear fitting program SWRC-Fit to apply a Brooks and Corey model to the data [54].

Fungal inoculum

Spores of *R. irregularis* (formerly *Glomus intraradices*) isolate DAOM-197198 were purchased from Premier Tech (Rivière-du-Loup, Quebec, Canada). *S. bescii* (sourced from the Noble Research Institute) was grown in modified Melin-Norkran's (MMN) broth. Bentonite clay particles were mixed with MMN broth, inoculated with *S. bescii*, and incubated at 24 °C for 8 weeks according to methods described by Ray et al. (ref. [55]). Uninoculated bentonite clay particles were also mixed with MMN broth and incubated under the same conditions.

Greenhouse water limitation experiment

P. hallii seeds collected from the Edwards Plateau in central Texas were grown to seed, scarified, surface sterilized, stratified at 4 °C for 1 week, and germinated in Petri plates. After 5 days, germinated seedlings were transferred into planting cones (Ray Leach Cone-tainers, Steuwe & Sons, Tangent, OR, USA) filled with double-autoclaved sand. Five days after transfer into cones, ~500 *R. irregularis* spores or 500 µL of *S. bescii* inoculum were injected into the sand to inoculate the *P. hallii* seedlings. A subset of seedlings was left uninoculated. Eight weeks after inoculation, seedlings were transplanted into 960 cm³ containers (Anderson Plant Bands, Steuwe & Sons) filled with a 50:50 (v:v) mixture of live soil and double-autoclaved sand (CEMEX Lapis Lustre Specialty Sand, #2/12) packed to 1.7 g mL⁻¹ bulk density at 15% moisture. Additional inocula (consisting of 500 *R. irregularis* spores or 5 g bentonite clay particles coated with *S. bescii*) were placed near the roots of seedlings as they were transplanted. Five g of uncoated bentonite clay particles were placed near the roots of previously uninoculated plants and plants that had been inoculated with *R. irregularis*. Each microcosm contained a 25 µm mesh hyphal ingrowth core (2.3 cm diameter) filled with 75 g of the same live soil (no sand) mixed with 0.5 g finely milled switchgrass biomass as bait for the fungal inocula. The multi-

phase fungal inoculation procedure was intended to give *R. irregularis* and *S. bescii* a colonization advantage over native fungal endophytes present in the soil.

After assembly, each microcosm was covered with 150 g double-autoclaved sand to inhibit cross-contamination of fungal inocula. All microcosms were watered with a total of 20 mL ultrapure H₂O during the first week to facilitate plant and fungal establishment. Half of the microcosms were watered on a weekly or bi-weekly schedule to maintain soil moisture at approximately 15% (based on gravimetric measurements), a level that would not restrict plant growth. The other half of the microcosms were not watered for the remainder of the experiment and declined to 5% soil moisture by 3 months. In a subset of microcosms, the moisture content of the soil surrounding the roots (i.e., not within the hyphal ingrowth cores) was monitored continuously with a volumetric water probe (ECH₂O EC-5, METER Group, Inc., Pullman, WA, USA). Another microcosm per treatment was weighed weekly to assess whole-microcosm gravimetric changes. Three replicate microcosms were maintained for each of the six treatment combinations (three fungal inoculum conditions × two moisture regimes). Average daytime and nighttime temperatures were 27 °C and 24 °C, respectively, with a photoperiod of 16 h. After 3 months, the microcosms were destructively harvested. Soil from hyphal ingrowth cores was homogenized, flash frozen in liquid N₂, and stored at −80 °C for DNA extractions or at room temperature for qSIP assays (see Fig. 1a for experimental design).

Soil characteristics

Soil moisture content following the 3-month harvest was determined by mass difference after drying soil for 48 h at 105 °C. Total soil C and N contents were measured with a Costech ECS 4010 Elemental Analyzer (Costech Analytical Technologies Inc., Valencia, CA).

Soil H₂¹⁸O qSIP assay

To determine bacterial growth potential following water limitation, we conducted an H₂¹⁸O qSIP assay [35, 37, 38]. Three days after the 3-month harvest, soil from three hyphal ingrowth cores per treatment was amended with either H₂¹⁶O or H₂¹⁸O (Fig. 1a). Each soil sample was divided into three subsamples: one 3.0 (±0.2) g dry weight equivalent sample for an initial H₂¹⁶O qSIP timepoint (T0) and two 4.0 (±0.2) g dry weight equivalent samples for the H₂¹⁶O and H₂¹⁸O 7-day qSIP timepoint (T7). Two of the T0 samples contained ~2.0 g due to limited soil availability. This resulted in a total of 54 samples (18 T0 H₂¹⁶O samples, 18 T7 H₂¹⁶O samples, and 18 T7 H₂¹⁸O samples). Each subsample was air-dried to 4.7% gravimetric water content in a biosafety cabinet and then brought up to 22.1% gravimetric water content (60% field capacity) with either ultrapure water at natural isotopic abundance or water enriched with ¹⁸O (98.38 atom % H₂¹⁸O, Isoflex, San Francisco, CA, USA). The final estimated enrichment of the samples containing H₂¹⁸O was 78.76 ¹⁸O atom %. We standardized the soil moisture and soil water isotopic enrichment across treatments to minimize differences across fungal treatments during the growth potential assay. The T0 subsample (amended with H₂¹⁶O) was immediately flash frozen in liquid N₂ and stored at −80 °C. Each of the T7 soil samples was stored in the dark inside a separate 473.2 mL glass jar with a tight-fitting lid containing a septum for gas sampling. After 7 days, the soils were flash frozen in liquid N₂ and stored at −80 °C.

CO₂ efflux measurement

15 mL headspace gas samples were collected at the beginning and end of the qSIP assay. CO₂ concentrations were measured on a gas chromatograph equipped with a thermal conductivity detector (GC-14A, Shimadzu, Columbia, MD).

DNA extraction and density gradient fractionation

DNA was extracted from each soil sample in quadruplicate with the DNeasy PowerSoil Pro kit (Qiagen, Germantown, MD, USA) and then pooled per sample prior to downstream analysis. To separate isotopically enriched DNA from unenriched DNA, samples were subjected to a cesium chloride density gradient formed in an ultracentrifuge as previously described [56, 57] with the following minor modifications. For each sample, 5 µg of DNA in 150 µL 1×TE buffer was mixed with 1.00 mL gradient buffer, and 4.60 mL CsCl stock (1.885 g mL⁻¹) with a final average density of 1.730 g mL⁻¹. Samples were loaded into 5.2 mL ultracentrifuge tubes and spun at 20 °C for 108 h at 176,284 RCF_{avg} (equivalent to 176,284 × g) in a Beckman Coulter Optima XE-90 ultracentrifuge using a VTI65.2 rotor. Sample fractionation was automated using Lawrence Livermore National

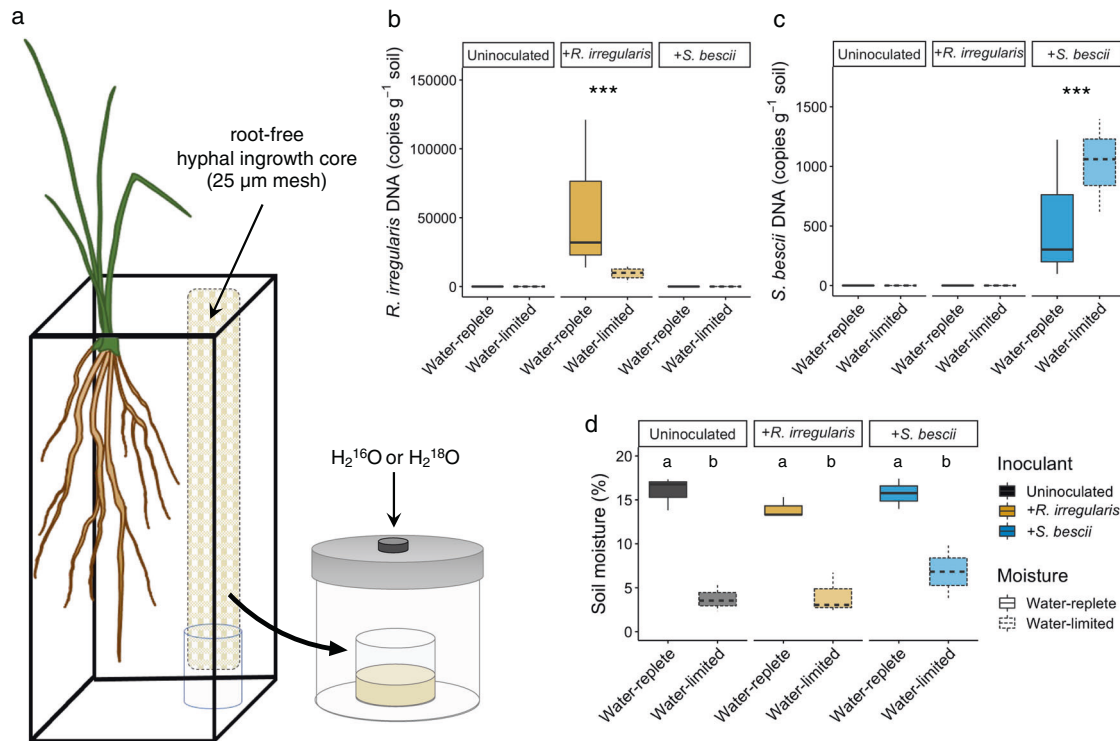


Fig. 1 Experimental design, fungal inoculum abundance, and soil moisture. **a** Microcosm design for H_2^{18}O quantitative stable isotope probing (qSIP) assay of root-free hyphal ingrowth core soils. *P. hallii* plants were inoculated with either *R. irregularis*, *S. bescii*, or left uninoculated (indicated in yellow, blue, or black, respectively) and grown under water-replete or water-limited conditions (indicated in dark or light shades and solid or dashed lines, respectively; $n = 3$ replicates per treatment). After 3 months, hyphal ingrowth core soils were amended with enriched (H_2^{18}O) or natural abundance (H_2^{16}O) water and incubated for 7 days. **b** Abundance of *R. irregularis* and **(c)** *S. bescii* (DNA copies g^{-1} soil) measured with strain-specific qPCR primers after 3 months. **d** Soil moisture after 3 months. Bold lines represent median value; whiskers represent upper and lower quartiles ($n = 6$ replicates per fungal*moisture treatment combination). Asterisks denote the results of a nonparametric Kruskal–Wallis rank sum test performed separately for each qPCR plot ($p < 0.001$). Letters denote a Tukey’s HSD test for soil moisture comparisons ($p < 0.001$).

Laboratory’s high-throughput SIP pipeline, which automates the fractionation and clean-up tasks for the density gradient SIP protocol [57]. The content of each ultracentrifuge tube was fractionated into 22 fractions (~236 μL each) using an Agilent Technologies 1260 isocratic pump to deliver water at 0.25 mL min^{-1} through a 25 G needle inserted through the top of the ultracentrifuge tube. Each tube was mounted in a Beckman Coulter fraction recovery system with a side port needle inserted through the bottom. The side port needle was routed to an Agilent 1260 Infinity fraction collector, and fractions were collected in 96-well deep well plates. The density of each fraction was measured using a Reichart AR200 digital refractometer fitted with a prism covering to facilitate measurement from 5 μL , as previously described [58]. DNA in each fraction was purified and concentrated using a Hamilton Microlab Star liquid handling system programmed to automate glycogen/PEG precipitations [36] (GlycoBlue Coprecipitant, Invitrogen by Thermo Fisher Scientific, Waltham, MA, USA). Washed DNA pellets were suspended in 40 μL of 1xTE buffer and the DNA concentration of each fraction was quantified using a PicoGreen fluorescence assay [57].

Quantitative PCR (qPCR) to assess bacterial and fungal abundance

We conducted qPCR with “universal” bacterial primers [59, 60] to measure 16S rRNA gene copy number in each unfractionated and SIP-fractionated DNA sample (see Table S1 and SI text for additional information). To assess the relative abundance of fungal inocula, we quantified *R. irregularis* and *S. bescii* gene copy number in unfractionated DNA (extracted in triplicate prior to the H_2^{18}O qSIP assay) with qPCR primers designed specifically for each fungal lineage [55, 61] (see Table S1 and SI text for additional information). We note that DNA can be unevenly distributed throughout fungal biomass. While fungal DNA copy number may not necessarily be indicative of total biomass or activity, it is a relative indicator of inoculation success [62, 63].

DNA sequencing

For each sample, we sequenced the 16S rRNA gene in unfractionated DNA as well as DNA fractions containing $>1.0 \text{ ng } \mu\text{L}^{-1}$, resulting in 6–11 sequenced fractions per sample. The V4 region of the 16S rRNA gene was amplified with the 515F/806R primer pair [59, 60], processed and barcoded through the Illumina V2 PE150 sample preparation kit, and sequenced on a MiSeq v2 platform in three runs (Illumina, Inc., San Diego, CA; see SI text and Tables S2, S3 for additional information about taxonomic assignment and amplicon sequence variant (ASV) recovery).

Quantitative stable isotope probing (qSIP) analysis

We calculated taxon-specific growth potential using the H_2^{18}O qSIP approach [35, 37, 38]. Briefly, the qSIP mathematical model estimates taxon-specific ^{18}O incorporation into DNA based on the shift in DNA density following exposure to natural abundance H_2O (H_2^{16}O) or “heavy” H_2^{18}O . We determined baseline densities for each taxon in the absence of an isotopic tracer (i.e., samples amended with H_2^{16}O), because even without tracer assimilation, DNA density varies by GC content [64]. For each ASV, we calculated median ^{18}O atom percent excess (APE) based on the difference in the buoyant density of 16S rRNA gene profiles sequenced from soils amended with H_2^{16}O or H_2^{18}O . We assumed linear population growth and used the change in taxon-specific ^{18}O enrichment and 16S rRNA gene abundance over the course of the qSIP assay (i.e., at T_0 and at T_7) to estimate taxon-specific growth potential with the equation below. In this equation, absolute growth rate for taxon i is estimated as b_i , where for each taxon i at the end of the qSIP assay (time t), $N_{\text{TOTAL}i}$ and $N_{\text{LIGHT}i}$ are the total (unlabeled + ^{18}O -labeled) and unlabeled 16S rRNA gene abundances, respectively.

$$b_i = \frac{N_{\text{TOTAL}i} - N_{\text{LIGHT}i}}{t}$$

We estimated 16S rRNA gene abundance by multiplying the relative abundance of each ASV's 16S rRNA gene by the total 16S rRNA gene copy number measured in each DNA fraction with qPCR. These calculations rest upon the assumptions that (a) bacterial DNA synthesis is proportional to cellular growth and division, (b) for each ASV's population, all new bacterial DNA is synthesized with an equal proportion of ^{18}O , and (c) bacterial taxa have an average of six 16S rRNA gene copies per cell [37]. We note that qSIP-based growth estimates are approximations due to several methodological challenges, including incomplete extraction of microbial DNA from soil [65], inter-taxonomic variation in 16S rRNA gene copies per cell [66], and amplification and sequencing biases [67, 68]. To increase confidence in these estimates, we first filtered out ASVs that were not recovered from all replicates of a particular treatment. This stringent filtering ensured that our estimates were representative of the three independent biological replicates. To quantify uncertainty around each estimate of taxon-specific ^{18}O APE and growth, we calculated 90% confidence intervals using a bootstrapping procedure with 1000 iterations [37].

^{18}O APE represents an integrated measure of new DNA synthesis that occurred during the qSIP assay. We note that while an increase in a taxon's ^{18}O APE indicates new growth, the overall population size might be increasing in abundance, remaining static, or declining depending on whether or not growth outpaces mortality. During population turnover, DNA ^{18}O APE can increase while population-level abundance either increases (if growth outpaces mortality), remains similar (if growth matches mortality), or declines (if mortality outpaces growth). Therefore, a high ^{18}O APE value is not necessarily indicative of a net increase in abundance. In our study, because we maintained all soils at 22.1% moisture during the qSIP assay, growth estimates represent bacterial growth potential immediately following 12 weeks of exposure to contrasting moisture regimes, rather than actual growth rates under water-limited or water-replete conditions.

We calculated a metric of growth efficiency by dividing gross bacterial growth by CO_2 efflux per treatment. Microbial growth efficiency can be defined as the proportion of biomass synthesized per unit C assimilated [69] or the proportion of C allocated towards growth rather than towards other activities [70]. We consider the ratio of new DNA synthesis to CO_2 efflux to be a proxy for growth efficiency since DNA synthesis is proportional to new microbial biomass production, and since CO_2 efflux represents respiration from microbial activities (including both growth and non-growth processes). Based on this metric, a higher proportion of non-growth activities (such as metabolism, osmoregulation, motility, energy spilling reactions, O_2 stress responses, and other maintenance activities) results in a decrease in growth efficiency.

Statistical analyses

We performed all statistical analyses in R [71]. We assessed differences in fungal inoculum gene copy number with a nonparametric Kruskal–Wallis rank sum test. We assessed differences in soil moisture, soil C and N content, DNA extraction efficiency, Inverse Simpson's diversity index, median ASV ^{18}O APE, and CO_2 efflux with a Tukey's HSD test comparing the means of all treatments. First, we created a linear model with a fixed effect for treatment. If the raw data did not meet the assumptions of normality, it was log-transformed prior to further analysis.

We used the R package *vegan* to perform a principal coordinates analysis and permutational multivariate analysis of variance (PERMANOVA) on the weighted UniFrac distance between communities present following different moisture and fungal treatment combinations and at different qSIP timepoints [72, 73].

We used the 90% confidence interval around each ASV's median ^{18}O APE to identify ASVs that incorporated significant quantities of ^{18}O into their DNA: only ASVs whose lower 90% confidence interval did not overlap with zero were considered to be actively growing. To compare taxon-specific growth potential between two treatments, we calculated pairwise ratios of ^{18}O -based growth potential for taxa that were actively growing under both conditions. We calculated these ratios by dividing an ASV's ^{18}O APE following one fungal*moisture treatment by its ^{18}O APE following the other fungal*moisture treatment. For example:

$$\text{ASV } ^{18}\text{O APE Ratio} = \frac{\text{ASV } ^{18}\text{O APE in water-limited soil with } R. \textit{irregularis}}{\text{ASV } ^{18}\text{O APE in water-replete soil with } R. \textit{irregularis}}$$

To assess whether these ratios were significantly greater than or less than one at the phylum level (indicating a significant difference between growth potential in soils maintained under different fungal or moisture

conditions), we conducted a Wilcoxon signed rank test with a Benjamini–Hochberg correction for multiple comparisons on the average of the ASV ^{18}O APE ratios within each phylum.

RESULTS

Plant growth, fungal abundance, and soil characteristics following 3-month water manipulation

After 3 months of growth, *P. hallii* plants reached similar mass across all fungal*moisture treatments (Fig. S1; $p > 0.05$). *R. irregularis* and *S. bescii* abundances (measured with strain-specific qPCR primers) were higher in the hyphal ingrowth cores of microcosms inoculated with each fungus than in the ingrowth cores of microcosms that were not inoculated (Tables S4, S5, Fig. 1b, c; $p < 0.001$). Soil moisture within the water-replete hyphal ingrowth cores was more than three times higher than the moisture content within the water-limited hyphal ingrowth cores (Fig. 1d; $p < 0.001$). Matric suction was higher in water-limited soils, but did not reach a point likely to cause a loss in cell turgor [74] (Fig. S2). Neither plant biomass nor fungal inoculum abundance was associated with differences in soil moisture (Figs. S1, 1d; $p > 0.05$). Total soil C, N, and DNA extracted did not vary between treatments (Figs. S3, S4a; $p > 0.05$).

Effects of water limitation and fungal inoculum on bacterial community structure

Moisture history and fungal inoculum shaped the structure of the bacterial communities present in hyphal ingrowth core soils (Table S6 and Fig. 2a; $p < 0.001$, PERMANOVA of weighted UniFrac distances). We detected only a small shift in bacterial community structure between the beginning and end of the 7-day qSIP assay in the unfractionated DNA samples (6.2% of variance explained; Table S7; $p < 0.001$). With this traditional 16S rRNA gene profiling of unfractionated DNA (sequenced from soils collected at the end of the qSIP assay), we found that moisture regime and fungal inoculum explained only 30.0% of the variation between “total” bacterial communities (i.e., bacteria identified in the total DNA pool, which many include dead and dormant organisms).

We used H_2^{18}O qSIP to filter out non-replicating ASVs (i.e., those that did not incorporate significant quantities of ^{18}O into their DNA) and identify the actively growing subset of the total bacterial community. In this subset, we found that moisture history, fungal inoculum, and their interactive effect explained 86% of the variation in community structure (11.9%, 49.5%, and 24.6%, respectively; Table S8 and Fig. 2b; $p < 0.001$, PERMANOVA). This is more than twice the effect size observed through traditional 16S rRNA gene profiling. qSIP-based filtering also highlighted differences in bacterial alpha diversity. There was no relationship between moisture history or fungal inoculum and the alpha diversity of the total communities sequenced (Fig. 2c; $p > 0.05$). However, for the actively growing communities, water limitation was associated with lower alpha diversity in uninoculated soils (Fig. 2d; $p < 0.01$), no difference in *R. irregularis*-inoculated soils (Fig. 2d; $p > 0.05$), and higher alpha diversity in *S. bescii*-inoculated soils (Fig. 2d; $p < 0.01$).

Overall, DNA from soil amended with H_2^{18}O was denser than DNA from soil amended with H_2^{16}O (Fig. S4b), indicating that many organisms incorporated ^{18}O into newly synthesized DNA. Our qSIP filtering parameters removed ASVs that were not identified in all replicates of a particular treatment, resulting in 989–1,153 bacterial ASVs per treatment (Table S3). The ASVs that remained following this stringent filtering step represent 62–73% of the ASVs sequenced per treatment in unfractionated DNA and 21–25% of the ASVs sequenced per treatment in the SIP-fractionated DNA (Tables S2, S3). Of the ASVs that remained after qSIP filtering, taxon-specific ^{18}O APE ranged from unenriched to 64.2 APE, with a median of 6.1. Between 30 and 60% of the total bacterial ASVs detected per treatment were enriched (Table S3;

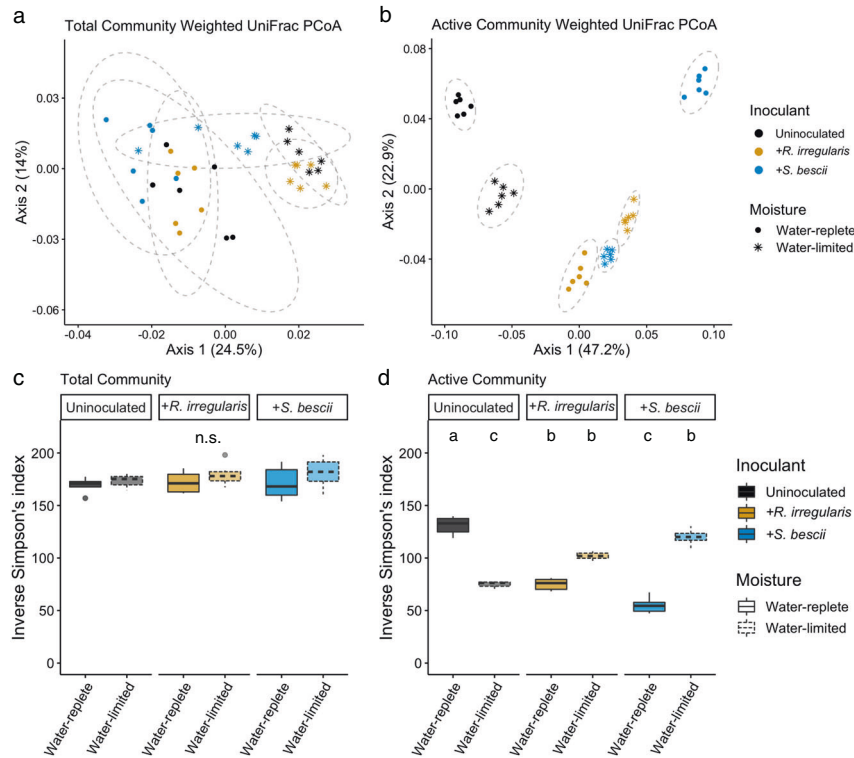


Fig. 2 Structure and alpha diversity of total and actively growing bacterial communities based on traditional and $H_2^{18}O$ qSIP-filtered 16S rRNA gene profiling. Principal coordinates analysis (PCoA) of weighted UniFrac distances between bacterial communities assessed with (a) traditional 16S rRNA gene profiles and (b) $H_2^{18}O$ qSIP-filtered 16S rRNA gene profiles representing the actively growing communities (i.e., ASVs that did not incorporate a significant quantity of ^{18}O were removed prior to analysis). Moisture history and fungal inoculum explained a total of 30% of the variation in total community structure ($p < 0.001$; $n = 6$ replicates) and 86% of variation in actively growing community structure ($p < 0.001$; $n = 6$ replicates). Ellipses show treatment groupings in (a, b). Inverse Simpson's diversity index in (c) total and (d) actively growing communities. Letters denote the results of a Tukey's HSD test (no significant differences between total communities; $p < 0.01$ for comparisons between actively growing communities; $n = 6$ replicates). Bold lines represent median values; whiskers represent upper and lower quartiles. For all plots, uninoculated, *R. irregularis*-inoculated, and *S. bescii*-inoculated soils are represented in black, yellow, and blue, respectively. Water-replete and water-limited soils are represented in dark or light color shades, solid or dashed boxplot outlines, and circles or asterisks, respectively.

lower 90% CI > 0); we refer to these as actively growing taxa. We note that although the stringent filtering parameters increase confidence in the taxon-specific APE estimates, these may result in an overestimate of the proportion of actively growing taxa if less abundant taxa have lower growth rates and are disproportionately filtered from the dataset.

Effects of water limitation and fungal inoculum on bacterial growth potential and growth efficiency

We used $H_2^{18}O$ qSIP and CO_2 efflux measurements to quantify the effects of moisture history and fungal inoculum on bacterial growth potential and growth efficiency. In uninoculated soils, water limitation was associated with more than a 50% reduction in median ASV ^{18}O APE (Fig. 3a; $p < 0.05$). Similarly, bacterial gross growth potential in uninoculated water-limited soil was less than one-third of gross growth potential in water-replete soil (Fig. 3b). In uninoculated soils, moisture history did not result in a difference in total CO_2 efflux during the qSIP assay (Fig. 3c; $p > 0.05$). Because bacterial growth potential was substantially lower following water limitation, this translated into a 72% reduction in growth efficiency (gross growth potential divided by CO_2 efflux) in uninoculated soils (Table S9).

In fungal-inoculated soils, bacterial communities were less affected by water limitation than in uninoculated soils. Moisture history was not associated with a difference in bacterial ASV ^{18}O APE or potential gross growth in soil inoculated with either *R. irregularis* or *S. bescii* (Fig. 3a, b; $p > 0.05$ for ^{18}O APE). CO_2 efflux from *S. bescii*-inoculated soils was higher than from *R. irregularis*-

inoculated soils, but the difference was only significant between the water-replete soils (Fig. 3c; $p < 0.05$). Compared to uninoculated soils, water limitation in fungal-inoculated soils had a less severe effect on potential bacterial growth efficiency, leading to a 17% reduction in *R. irregularis*-inoculated soils and a 37% reduction in *S. bescii*-inoculated soils (Table S9).

Taxon-specific response to water limitation and fungal inoculum

Since compensatory dynamics may obscure taxon-specific response to different conditions [75], we calculated ratios of ^{18}O APE for each actively growing ASV detected under two conditions. For example, for ASVs detected in both water-limited and water-replete soil, a ratio of greater than 1.0 suggests that the ASV could sustain higher growth potential in water-limited soil, a ratio of less than 1.0 suggests that the ASV could sustain higher growth potential in water-replete soil, and a ratio indistinguishable from 1.0 suggests that the ASV could maintain similar growth potential regardless of moisture history. In the absence of fungal inocula, most ASVs were suppressed by water limitation (Fig. 4a). When averaged at the phylum level, ^{18}O APE ratios were significantly less than 1.0 for six of the ten most abundant phyla: *Actinobacteria*, *Bacteroidetes*, *Chloroflexi*, *Gemmatimonadetes*, *Proteobacteria*, and *Verrucomicrobia* (Fig. 4a; adjusted $p < 0.05$). In contrast, bacterial growth potential in fungal-inoculated soils was less strongly affected by moisture history: while water limitation was associated with lower growth potential for many ASVs, many others sustained similar or greater growth potential. When averaged at

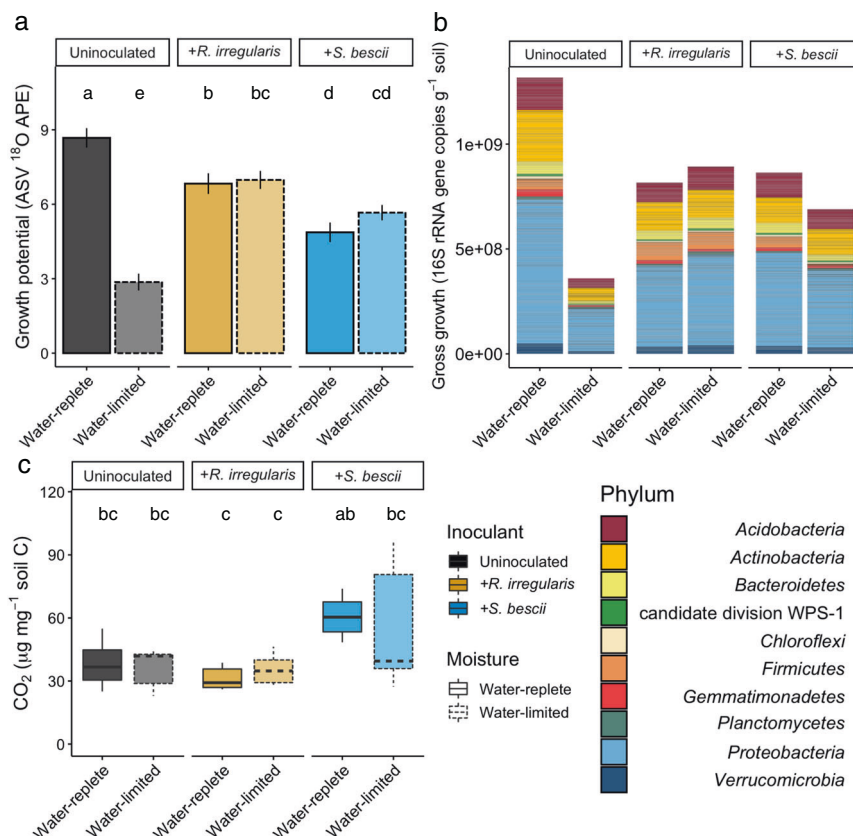


Fig. 3 H_2^{18}O qSIP-based bacterial growth potential, gross growth, and CO_2 efflux from hyphal ingrowth core soils following exposure to different moisture regimes and fungal inocula. **a** Bacterial ASV growth potential represented by median ^{18}O atom percent excess (APE). Uninoculated, *R. irregularis*-inoculated, and *S. bescii*-inoculated soils are represented in black, yellow, and blue, respectively. Water-replete and water-limited soils are represented in dark or light shades and solid or dashed outlines, respectively. Letters denote the results of a Tukey's HSD test comparing the means of all treatments ($p < 0.01$; $n = 3$ replicates). **b** Taxon-specific gross growth (16S rRNA gene copies g^{-1} soil) based on ASV ^{18}O incorporation, summed by phylum for each treatment. Only ASVs that belong to the ten most abundant phyla are represented. **c** CO_2 efflux ($\mu\text{g CO}_2 \text{ mg}^{-1}$ soil C) from hyphal ingrowth core soils during H_2^{18}O qSIP assay. Bold lines represent median values; whiskers represent upper and lower quartiles ($p < 0.05$; $n = 6$ replicates per treatment).

the phylum level, populations belonging to the phyla *Actinobacteria* and *Gemmatimonadetes* were suppressed in water-limited soil inoculated with *R. irregularis* (Fig. 4b; adjusted $p < 0.05$), while *Verrucomicrobia* were suppressed in water-limited soil inoculated with *S. bescii* (Fig. 4c; adjusted $p < 0.05$). Only the *Acidobacteria* present in *R. irregularis*-inoculated soil sustained higher growth potential following water limitation (Fig. 4b; adjusted $p < 0.05$).

To assess whether each fungus promoted or suppressed growth potential of specific bacteria in water-limited soil, we calculated ^{18}O APE ratios for ASVs detected in both uninoculated and fungal-inoculated soils following water limitation. Most ASVs sustained higher growth potential in *R. irregularis*- or *S. bescii*-inoculated soil than in uninoculated soil (Figs. 5, S5). Averaged at the phylum level, populations belonging to the phyla *Acidobacteria*, *Actinobacteria*, *Bacteroidetes*, *Chloroflexi*, *Planctomycetes*, *Proteobacteria*, and *Verrucomicrobia* were significantly more active in *R. irregularis*-inoculated soil (Fig. 5a; adjusted $p < 0.05$). In *S. bescii*-inoculated soils, only the population belonging to the phylum *Actinobacteria* was significantly more active than in uninoculated soil (Fig. 5b; adjusted $p < 0.05$). Some taxa responded positively to both *R. irregularis* and *S. bescii*; others responded positively only to one fungal lineage (Fig. 5c–e). Overall, the magnitude of positive growth response was greater in *R. irregularis*- relative to *S. bescii*-inoculated soils.

Several bacterial ASVs incorporated significant quantities of ^{18}O into their DNA under some conditions, but not under others, as indicated by differences in gross growth potential measured through the H_2^{18}O qSIP assay (Fig. S6–S15). For any ASV that did

not incorporate a significant quantity of ^{18}O into its DNA under a particular moisture*fungal condition, it was not possible to calculate an ^{18}O APE ratio to compare the ASV's growth potential under that moisture*fungal condition to its growth potential under another condition. This was most apparent for the *Firmicutes* in uninoculated soil: none of the *Firmicutes* ASVs incorporated significant quantities of ^{18}O into their DNA following water limitation (Fig. S11). Therefore, the effect of the fungal inocula on *Firmicutes* growth potential following water limitation is not represented in the ^{18}O APE ratios (Fig. 5a, b; no *Firmicutes* bar shown). However, several *Firmicutes* incorporated significant quantities of ^{18}O into their DNA in fungal-inoculated soils following moisture limitation (Fig. S11). More than double the number of *Firmicutes* ASVs were active in *R. irregularis*- compared to *S. bescii*-inoculated soils.

DISCUSSION

We found that plant-associated fungi have a protective effect on bacterial communities exposed to water limitation, and that bacterial responses to different fungal lineages are distinct. Because plant biomass was similar across all conditions investigated, we attribute differences in bacterial community composition and growth potential to direct effects of moisture history and fungal inocula, rather than to indirect effects mediated by plants. We found that H_2^{18}O qSIP highlighted treatment differences that were not apparent through traditional 16S rRNA gene profiling. This

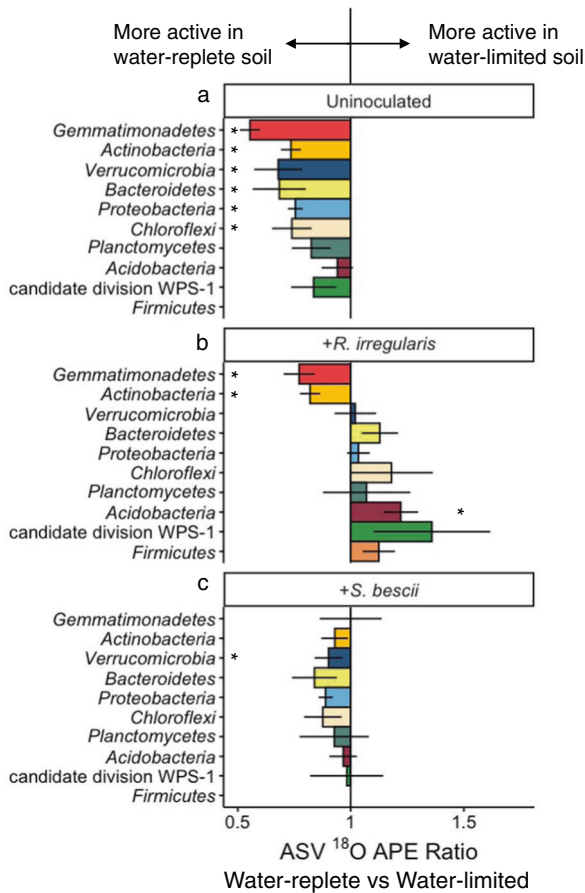


Fig. 4 Comparison of taxon-specific bacterial growth potential following water-limited versus water-replete conditions in uninoculated or fungal-inoculated hyphal ingrowth core soils. ¹⁸O atom percent excess (APE) active growth ratios of ASVs present in both water-limited and water-replete soils that were either (a) uninoculated, (b) inoculated with *R. irregularis*, or (c) inoculated with *S. bescii*. Ratios were averaged at the phylum level. Ratios less than 1.0 (bars located to the left of the central vertical line) indicate that water limitation suppressed growth potential. Ratios greater than 1.0 (bars located to the right of the central line) indicate that water limitation facilitated greater growth potential. Error bars represent the standard error. Asterisks denote phylum-level averages that are significantly greater than or less than 1.0 (adjusted $p < 0.05$ based on Wilcoxon signed rank test and Benjamini–Hochberg correction for multiple comparisons). Only taxa that incorporated a significant quantity of ¹⁸O (lower 90% CI > 0) and belong to the ten most abundant phyla are represented.

demonstrates the utility of DNA qSIP for investigation of the soil hyphosphere and other systems in which it is difficult to discern a microbial signal above a complex background community.

Soil water limitation suppresses bacterial growth potential and growth efficiency

We observed a significant decrease in bacterial growth potential following 3 months of moisture limitation, but little effect of moisture history on respiration potential. Together, these responses resulted in a substantial reduction in bacterial growth efficiency. This may reflect a trade-off between microbial stress tolerance and growth in drought-affected soil [76]. Reduced microbial growth efficiency can occur when biota prioritize essential metabolic activities over cellular growth and replication [7, 56, 76–78]. Slowed growth also helps bacteria persist in the presence of antibiotics [79, 80], which can accumulate in dry soils as microorganisms compete for limited resources [81].

We measured lower growth potential across a broad range of bacterial lineages present in our water-limited soils. Interestingly, this included several monoderm taxa (often referred to as Gram-positive organisms) belonging to the phyla *Actinobacteria*, *Firmicutes*, and *Chloroflexi*. Monoderm taxa have thick cell walls and lack an outer membrane, which can protect them against oxidative damage under dry conditions [7, 82–85]. Several studies report that monoderms maintain greater abundance and activity in dry soils compared to diderms (also known as Gram-negative organisms, such as most of the taxa belonging to the phyla *Acidobacteria*, *Bacteroidetes*, *Proteobacteria*, and *Verrucomicrobia*) [7, 84, 85]. In addition to the protection conferred by the structure of their cellular envelope, monoderms may also be poised to outcompete other organisms in drought-affected soils through their capacity to produce antibiotics [81, 84, 86] or utilize complex C substrates that remain available following water limitation [2, 81]. Our results suggest that even monoderm taxa that are considered relatively drought tolerant can be negatively affected by water limitation.

Plant-associated fungi support bacterial resilience in drought-affected soil, but fungal–bacterial relationships are context dependent

While water limitation had a broad suppressive effect in uninoculated soils, many of the bacteria in soils inoculated with either *R. irregularis* or *S. bescii* maintained similar growth potential following cultivation under either water-replete or water-limited conditions. This protective fungal effect extended throughout the bacterial community, and affected many taxa that are often considered drought susceptible. Relative abundances of *Bacteroidetes*, *Planctomycetes*, *Verrucomicrobia*, and many *Proteobacteria* and *Acidobacteria* have been shown to decrease following drought [4, 5, 87]. However, we found that many ASVs belonging to these phyla sustained similar growth potential in fungal-inoculated soils, regardless of moisture treatment. This suggests that *R. irregularis* and *S. bescii* modified edaphic conditions in some way that broadly supported bacterial resilience to water limitation. Plant-associated fungi can exude plant-derived C [24, 29–32], promote biofilm formation [88], enhance soil aggregation through their interactions with other soil biota [14, 89], and facilitate bacterial transport through soil [90]. Together, these fungal-mediated processes could help maintain soil connectivity, microbial activity, and nutrient cycling under water-limited conditions, thereby preventing bacterial dormancy and death despite a substantial decline in soil moisture. By supporting bacterial function in drought-affected soil, plant-associated fungi may counteract the destabilizing effect of moisture stress [91] and improve capacity for recovery once moisture is restored.

In contrast to their synergistic effects in water-limited soils, *R. irregularis* and *S. bescii* appeared to suppress bacterial growth potential following water-replete conditions. This demonstrates that the relationship between plant-associated fungi and hyphosphere bacteria is context-dependent, and not entirely mutualistic. Plant-associated fungi are known to compete with other biota for N [92] and P [20, 21], and can suppress microbial decomposers [23, 93]. Similarly, bacteria can inhibit mycorrhizal proliferation [20, 21, 92]. Putative bacterial predators have also been found in greater abundance on extraradical mycorrhizal hyphae than in surrounding soil [18]. We did not investigate the potential mechanisms of suppressive interactions between bacteria and plant-associated fungi. However, our observation that bacterial growth potential depends on moisture history in fungal-inoculated soil indicates that there are trade-offs between fungal and bacterial growth. In this trade-off, fungi may limit bacterial growth under resource-replete conditions, but promote bacterial growth under resource-limited conditions. Similar context-dependency is well-documented in other mutualisms [94]. In our system, context-dependency may indicate a stabilizing ecological effect exerted by multipartite hyphosphere interactions.

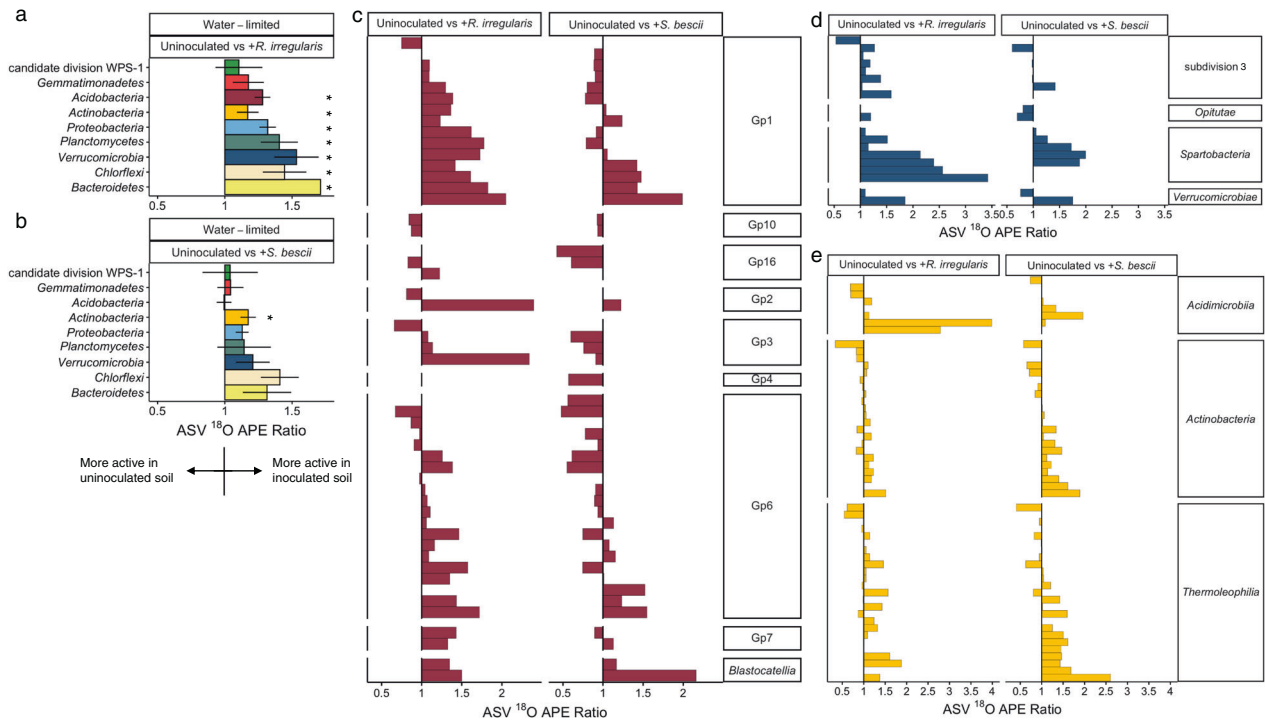


Fig. 5 Comparison of taxon-specific bacterial growth potential in fungal-inoculated versus uninoculated hyphal ingrowth core soils following water limitation. ¹⁸O atom percent excess (APE) active growth ratios of bacterial ASVs present in water-limited soils that were either uninoculated or inoculated with *R. irregularis* or *S. bescii*, averaged at the phylum level (**a**, **b**) or displayed by individual ASV grouped within class for the phyla *Acidobacteria* (**c**), *Verrucomicrobia* (**d**), and *Actinobacteria* (**e**). Ratios greater than 1.0 (to the right of the vertical central line) indicate that fungal inocula supported greater bacterial growth potential. For phylum-level averages, asterisks represent ¹⁸O APE ratios that are significantly greater than 1.0 (adjusted $p < 0.05$ based on Wilcoxon signed rank test and Benjamini–Hochberg correction for multiple comparisons). Error bars represent the standard error within each bacterial phylum. Only taxa that incorporated a significant quantity of ¹⁸O (lower 90% CI > 0) and belong to the ten most abundant phyla are represented.

Since *R. irregularis* and *S. bescii* were not actively associating with their plant hosts in our H₂¹⁸O qSIP assay, we attribute these results to fungal effects that had occurred during the preceding 3-month greenhouse experiment. Although the qSIP assay might have caused a nutrient flush from the perturbed soil and biota, CO₂ efflux from the fungal-inoculated soils was not significantly greater than from the uninoculated soils. Therefore, we conclude that differences in bacterial growth potential, growth efficiency, and diversity of the actively growing community present in fungal-inoculated soil were related to preceding fungal effects on the soil environment rather than to bacterial decomposition of fungal necromass.

Magnitude of bacterial response is fungal lineage-dependent

While both fungal lineages supported bacterial resilience, *R. irregularis* elicited a stronger positive response than *S. bescii*—both with respect to the number of ASVs and the magnitude of individual responses. Distinct microbial consortia associate with different mycorrhizal lineages [18, 19, 31, 89]. Although empirical evidence remains sparse, different mycorrhizal exudate profiles, growth habits, and other functional traits may shape the composition and activity of the surrounding microbial community [48, 89, 95, 96], a phenomenon that has been documented more extensively for root-microbe interactions [97–99]. Lower bacterial growth potential and growth efficiency in *S. bescii*- compared to *R. irregularis*-inoculated soils may be due to *S. bescii*'s wider enzymatic repertoire, which could accelerate decomposition (as indicated by higher CO₂ efflux) or heighten competitive interactions with other soil biota. Additionally, higher gene copy numbers of *R. irregularis* compared to *S. bescii* detected in hyphosphere soil suggest that *R. irregularis* colonization levels were more robust. Greater fungal proliferation could be correlated

with greater resource distribution, enhanced soil structure, or other conditions that support bacterial growth. Together, these findings suggest that diverse fungal lineages promote bacterial resilience to water limitation, but that the individual taxa and magnitude of taxon-specific response to each fungus is distinct.

CONCLUSION

As global precipitation patterns change, it is important to understand how drought influences ecological functions and microbial interactions, both during and after water limitation. Plant-associated fungi are known to support plant growth and nutrition in droughted soils, but their simultaneous effects on the soil bacterial communities that mediate nutrient cycling and other critical terrestrial processes remain poorly explored. With H₂¹⁸O qSIP, we show that plant-associated fungi have a protective effect on bacterial communities exposed to water limitation. Both the AM fungus *R. irregularis* and the *Sebacinales* fungus *S. bescii* facilitated greater growth potential, growth efficiency, and diversity of actively growing hyphosphere bacteria in drought-affected soil. While these divergent fungal lineages stimulated responses of differing magnitude, the broad patterns were similar, suggesting that the dominant underlying mechanisms may be conserved across a substantial portion of the bacterial community rather than limited to interactions with a small number of bacterial taxa. Remarkably, both *R. irregularis* and *S. bescii* had a protective effect on hyphosphere bacteria exposed to water limitation in a “live” soil, which may have included functionally redundant fungal lineages. This finding is relevant for practical evaluation of fungal inoculants, whose ability to persist and elicit a positive effect in natural settings is not well-established. Additionally, our work indicates that H₂¹⁸O qSIP is a useful approach in challenging

systems such as the terrestrial hyphosphere, where microbial dynamics may be difficult to detect with traditional 16S rRNA gene profiling. Together, our findings demonstrate that context-dependent multipartite relationships support bacterial resilience to water limitation and may promote post-drought recovery.

DATA AVAILABILITY

Raw DNA sequence files and associated metadata were deposited in the US National Center for Biotechnology Information (NCBI) sequence read archive under accession number PRJNA852274. The remaining data that support the findings of this study are provided in Supplementary Data Files 1–6.

REFERENCES

- Leng G, Hall J. Crop yield sensitivity of global major agricultural countries to droughts and the projected changes in the future. *Sci Total Environ.* 2019;654:811–21.
- Hueso S, García C, Hernández T. Severe drought conditions modify the microbial community structure, size and activity in amended and unamended soils. *Soil Biol Biochem.* 2012;50:167–73.
- Alster CJ, German DP, Lu Y, Allison SD. Microbial enzymatic responses to drought and to nitrogen addition in a southern California grassland. *Soil Biol Biochem.* 2013;64:68–79.
- Bouskill NJ, Lim HC, Borglin S, Salve R, Wood TE, Silver WL, et al. Pre-exposure to drought increases the resistance of tropical forest soil bacterial communities to extended drought. *ISME J.* 2013;7:384–94.
- Acosta-Martinez V, Cotton J, Gardner T, Moore-Kucera J, Zak J, Wester D, et al. Predominant bacterial and fungal assemblages in agricultural soils during a record drought/heat wave and linkages to enzyme activities of biogeochemical cycling. *Appl Soil Ecol.* 2014;84:69–82.
- O'Connell CS, Ruan L, Silver WL. Drought drives rapid shifts in tropical rainforest soil biogeochemistry and greenhouse gas emissions. *Nat Commun.* 2018;9:1348.
- Schimel JP. Life in dry soils: Effects of drought on soil microbial communities and processes. *Annu Rev Ecol Evol Syst.* 2018;49:409–32.
- Naylor D, Colemann-Derr D. Drought stress and root-associated bacterial communities. *Front Plant Sci.* 2018;8:2223.
- de Vries FT, Griffiths RI, Knight CG, Nicolitch O, Williams A. Harnessing rhizosphere microbiomes for drought-resilient crop production. *Science.* 2020;368:270–4.
- Smith SE, Read D. *Mycorrhizal symbiosis*. 3rd ed. London: Academic Press; 2008. p. 145–90.
- Kakouridis A, Hagen JA, Kan MP, Mambelli S, Feldman LJ, Herman DJ, et al. Routes to roots: direct evidence of water transport by arbuscular mycorrhizal fungi to host plants. *New Phytol.* 2022; <https://doi.org/10.1111/nph.18281>.
- Rillig MC, Mummy DL. Mycorrhizas and soil structure. *N Phytol.* 2006;171:41–53.
- Gong M, You X, Zhang Q. Effects of *Glomus intraradices* on the growth and reactive oxygen metabolism of foxtail millet under drought. *Ann Microbiol.* 2015;65:595–602.
- Ruiz-Lozano JM. Arbuscular mycorrhizal symbiosis and alleviation of osmotic stress. *N Perspect Mol Stud Mycorrhiza.* 2003;13:309–17.
- Morte A, Lovisolo C, Schubert A. Effect of drought stress on growth and water relations of the mycorrhizal association *Helianthemum almeriense*-*Terfezia clayeryi*. *Mycorrhiza.* 2000;10:115–9.
- Birhane E, Sterck F, Fetene M, Bongers F, Kuyper T. Arbuscular mycorrhizal fungi enhance photosynthesis, water use efficiency, and growth of frankincense seedlings under pulsed water availability conditions. *Oecologia.* 2012;169:895–904.
- Duan X, Neuman DS, Reiber JM, Green CD, Saxton AM, Augé RM. Mycorrhizal influence on hydraulic and hormonal factors implicated in the control of stomatal conductance during drought. *J Exp Bot.* 1996;47:1541–50.
- Emmett BD, Levesque-Tremblay V, Harrison MJ. Conserved and reproducible bacterial communities associate with extraradical hyphae of arbuscular mycorrhizal fungi. *ISME J.* 2021;15:2276–88.
- Toljander JF, Artursson V, Paul LR, Jansson JK, Finlay RD. Attachment of different soil bacteria to arbuscular mycorrhizal fungal extraradical hyphae is determined by hyphal vitality and fungal species. *FEMS Microbiol Lett.* 2006;254:34–40.
- Svenningsen NB, Watts-Williams SJ, Joner EJ, Battini F, Efthymiou A, Cruz-Paredes C, et al. Suppression of the activity of arbuscular mycorrhizal fungi by the soil microbiota. *ISME J.* 2018;12:1296–307.
- Cruz-Paredes C, Svenningsen NB, Nybroe O, Kjeller R, Frøsløv TG, Jakobsen I. Suppression of arbuscular mycorrhizal fungal activity in a diverse collection of non-cultivated soils. *FEMS Microbiol Ecol.* 2019;95:fz020.
- Nuccio EE, Hodge A, Pett-Ridge J, Herman DJ, Weber PK, Firestone MK. An arbuscular mycorrhizal fungus significantly modifies the soil bacterial community and nitrogen cycling during litter decomposition. *Environ Microbiol.* 2013;15:1870–81.
- Verbruggen E, Jansa J, Hammer EC, Rillig MC. Do arbuscular mycorrhizal fungi stabilize litter-derived carbon in soil? *J Ecol.* 2016;104:261–9.
- Kaiser C, Kilburn MR, Clode PL, Fuchslueger L, Koranda M, Cliff JP, et al. Exploring the transfer of recent plant photosynthates to soil microbes: mycorrhizal pathway vs direct root exudation. *N Phytol.* 2015;205:1537–51.
- Zhang L, Shi N, Fan J, Wang F, George TS, Feng G. Arbuscular mycorrhizal fungi stimulate organic phosphate mobilization associated with changing bacterial community structure under field conditions. *Environ Microbiol.* 2018a;20:2639–51.
- Hodge A, Campbell CD, Fitter AH. An arbuscular mycorrhizal fungus accelerates decomposition and acquires nitrogen directly from organic matter. *Nature.* 2001;413:297–9.
- Hestrin R, Hammer EC, Mueller CW, Lehmann J. Synergies between mycorrhizal fungi and soil microbial communities increase plant nitrogen acquisition. *Commun Biol.* 2019;2:233.
- Medina A, Probanza A, Gutierrez Mañero FJ, Azcón R. Interactions of arbuscular-mycorrhizal fungi and *Bacillus* strains and their effects on plant growth, microbial rhizosphere activity (thymidine and leucine incorporation) and fungal biomass (ergosterol and chitin). *Appl Soil Ecol.* 2003;22:15–28.
- Drigo B, Pijl AS, Duyts H, Kielak AM, Gamper HA, Houtekamer MJ, et al. Shifting carbon flow from roots into associated microbial communities in response to elevated atmospheric CO₂. *Proc Natl Acad Sci USA.* 2010;107:10938–42.
- Jakobsen I, Rosenthal L. Carbon flow into soil and external hyphae from roots of mycorrhizal cucumber plants. *N Phytol.* 1990;115:77–83.
- Zhou J, Chai X, Zhang L, George TS, Wang F, Feng G. Different arbuscular mycorrhizal fungi cocolonizing on a single plant root system recruit distinct microbiomes. *mSystems.* 2020;5:e00929–0.
- See CR, Keller AB, Hobbie SE, Kennedy PG, Weber PK, Pett-Ridge J. Hyphae move matter and microbes to mineral microsites: Integrating the hyphosphere into conceptual models of soil organic matter stabilization. *Glob Change Biol.* 2022;28:2527–40.
- Carini P, Marsden P, Leff J, Morgan E, Strickland M, Fierer N. Relic DNA is abundant in soil and obscures estimates of soil microbial diversity. *Nat Microbiol.* 2017;2:16242.
- Lennon JT, Muscarella ME, Placella MA, Lehmkuhl BK. How, when, and where relic DNA affects microbial diversity. *mBio.* 2018;9:e00637–18.
- Hungate BA, Mau RL, Schwartz E, Caporaso JG, Dijkstra P, van Gestel N, et al. Quantitative microbial ecology through stable isotope probing. *Appl Environ Microbiol.* 2015;81:7570–81.
- Neufeld JD, Vohra J, Dumont MG, Lueders T, Manefield M, Friedrich MW, et al. DNA stable-isotope probing. *Nat Protoc.* 2007;2:860–6.
- Koch BJ, McHugh TA, Hayer M, Schwartz E, Blazewicz SJ, Dijkstra P, et al. Estimating taxon-specific population dynamics in diverse microbial communities. *Ecosphere.* 2018;9:e02090–15.
- Blazewicz SJ, Hungate BA, Koch BJ, Nuccio EE, Morrissey E, Brodie EL, et al. Taxon-specific microbial growth and mortality patterns reveal distinct temporal population responses to rewetting in a California grassland soil. *ISME J.* 2020;14:1520–32.
- Kilronomos JN. Host-specificity and functional diversity among arbuscular mycorrhizal fungi. In: Proceedings of the 8th International Symposium on Microbial Ecology. Bell CR, Brylinski M, Johnson-Green P, editors. Halifax: Atlantic Canada Society from Microbial Ecology; 2000. p. 845–51.
- Ray P, Guo Y, Chi MH, Krom N, Saha MC, Craven KD. *Serendipita bescii* promotes winter wheat growth and modulates the host root transcriptome under phosphorus and nitrogen starvation. *Environ Microbiol.* 2021;23:1876–88.
- Lee MR, Hawkes CV. Widespread co-occurrence of *Sebacinales* and arbuscular mycorrhizal fungi in switchgrass roots and soils has limited dependence on soil carbon or nutrients. *Plants People Planet.* 2021;3:614–26.
- Ruiz-Lozano JM, Azcon R, Gomez M. Effects of arbuscular-mycorrhizal glomus species on drought tolerance: physiological and nutritional plant responses. *Appl Environ Microbiol.* 1995;61:456–60.
- He F, Sheng M, Tang M. Effects of *Rhizophagus irregularis* on photosynthesis and antioxidative enzymatic system in *Robinia pseudoacacia* L. under drought stress. *Front Plant Sci.* 2017;8:183.
- Ghimire SR, Craven KD. Enhancement of switchgrass (*Panicum virgatum* L.) biomass production under drought conditions by the ectomycorrhizal fungus *Sebacina vermifera*. *Appl Environ Microbiol.* 2011;77:7063–7.
- Tisserant E, Malbreil M, Kuo A, Kohler A, Symeonidi A, Balestrini R, et al. Genome of an arbuscular mycorrhizal fungus provides insight into the oldest plant symbiosis. *Proc Natl Acad Sci USA.* 2013;110:20117–22.
- Kamel L, Keller-Pearson M, Roux C, Ané JM. Biology and evolution of arbuscular mycorrhizal symbiosis in the light of genomics. *N Phytol.* 2017;213:531–6.
- Bukovská P, Bonkowski M, Konvalinková T, Beskid O, Hujšlová M, Püschel D, et al. Utilization of organic nitrogen by arbuscular mycorrhizal fungi—is there a specific role for protists and ammonia oxidizers? *Mycorrhiza.* 2018;28:269–83.

48. Zhang L, Feng G, Declerck S. Signal beyond nutrient, fructose, exuded by an arbuscular mycorrhizal fungus triggers phytate mineralization by a phosphate solubilizing bacterium. *ISME J.* 2018;12:2339.
49. Zuccaro A, Lahrmann U, Güldener U, Langen G, Pffiff S, Biedenkopf D, et al. Endophytic life strategies decoded by genome and transcriptome analyses of the mutualistic root symbiont *Piriformospora indica*. *PLoS Pathog.* 2011;7:e1002290.
50. Ray P, Chi MH, Guo Y, Chen C, Adam C, Kuo A, et al. Genome sequence of the plant growth promoting fungus *Serendipita vermifera* subsp. *bescii*: The first native strain from North America. *Phytophysics J.* 2018;2:62–3.
51. Dias T, Pimentel V, Cogo AJD, Costa R, Bertolazi AA, Miranda C, et al. The free-living stage growth conditions of the endophytic fungus *Serendipita indica* may regulate its potential as plant growth promoting microbe. *Front Microbiol.* 2020;11:562238.
52. Moffatt HH. Soil Survey of Caddo County, Oklahoma. Washington, D.C.: United States Department of 836 Agriculture Soil Conservation Service; 1973.
53. Sher Y, Baker NR, Herman NR, Fossum C, Hale L, Zhang XX, et al. Microbial extracellular polysaccharide production and aggregate stability controlled by Switchgrass (*Panicum virgatum*) root biomass and soil water potential. *Soil Biol Biochem.* 2020;143:107742.
54. Seki K. SWRC fit—a nonlinear fitting program with a water retention curve for soils having unimodal and bimodal pore structure. *Hydrol Earth Syst Sci Discuss.* 2007;4:407–37.
55. Ray P, Ishiga T, Decker SR, Turner GB, Craven KD. A novel delivery system for the root symbiotic fungus, *Sebacina vermifera*, and consequent biomass enhancement of low lignin COMT switchgrass lines. *BioEnergy Res.* 2015;8:922–33.
56. Blazewicz SJ, Schwartz E, Firestone MK. Growth and death of bacteria and fungi underlie rainfall-induced carbon dioxide pulses from seasonally dried soil. *Ecology.* 2014;95:1162–72.
57. Nuccio EE, Blazewicz SJ, Lafler M, Campbell AN, Kakouridis A, Kimbrel JA, et al. HT-SIP: a semi-automated Stable Isotope Probing pipeline identifies interactions in the hyphosphere of arbuscular mycorrhizal fungi. *bioRxiv.* 2022; <https://doi.org/10.1101/2022.07.01.498377v1>.
58. Buckley DH, Huangyutham V, Hsu SF, Nelson TA. Stable isotope probing with ¹⁵N achieved by disentangling the effects of genome G+C content and isotope enrichment on DNA density. *Appl Environ Microbiol.* 2007;73:3189–95.
59. Parada AE, Needham DM, Fuhrman JA. Every base matters: assessing small subunit rRNA primers for marine microbiomes with mock communities, time series and global field samples. *Environ Microbiol.* 2016;18:1403–14.
60. Apprill A, McNally S, Parsons R, Weber L. Minor revision to V4 region SSU rRNA 806R gene primer greatly increases detection of SAR11 bacterioplankton. *Aquat Micro Ecol.* 2015;75:129–37.
61. Badri A, Stefani FOP, Lachance G, Roy-Arcand L, Beaudet D, Vialle A, et al. Molecular diagnostic toolkit for *Rhizophagus irregularis* isolate DAOM-197198 using quantitative PCR assay targeting the mitochondrial genome. *Mycorrhiza.* 2016;26:721–33.
62. Gamper HA, Young JP, Jones DL, Hodge A. Real-time PCR and microscopy: are the two methods measuring the same unit of arbuscular mycorrhizal fungal abundance? *Fungal Genet Biol.* 2008;45:581–96.
63. Tellenbach C, Grünig CR, Sieber TN. Suitability of quantitative real-time PCR to estimate the biomass of fungal root endophytes. *Appl Environ Microbiol.* 2010;76:5764–72.
64. Schildkraut CL, Marmur J, Doty P. Determination of the base composition of deoxyribonucleic acid from its buoyant density in CsCl. *J Mol Biol.* 1962;4:430–43.
65. Martin-Laurent F, Phillipot L, Hallet S, Chaussod R, Germon JC, Soulas G, et al. DNA extraction from soils: old bias for new microbial diversity analysis methods. *Appl Environ Microbiol.* 2001;67:2354–9.
66. Louca S, Doebeli M, Parfrey LW. Correcting for 16S rRNA gene copy numbers in microbiome surveys remains an unsolved problem. *Microbiome.* 2018;6:41.
67. Kanagawa T. Bias and artifacts in multitemplate polymerase chain reactions (PCR). *J Biosci Bioeng.* 2003;96:317–23.
68. Kozarewa I, Ning Z, Quail MA, Sanders MJ, Berriman M, Turner DJ. Amplification-free Illumina sequencing-library preparation facilitates improved mapping and assembly of (G+C)-biased genomes. *Nat Methods.* 2009;6:291–5.
69. Manzoni S, Taylor P, Richter A, Porporato A, Ågren GI. Environmental and stoichiometric controls on microbial carbon-use efficiency in soils. *N Phytol.* 2012;196:79–91.
70. Geyer KM, Dijkstra P, Sinsabaugh R, Frey SD. Clarifying the interpretation of carbon use efficiency in soil through methods comparison. *Soil Biol Biochem.* 2019;128:79–88.
71. R Core Team. R: a language and environment for statistical computing. Vienna: R Foundation for Statistical Computing; 2019.
72. Oksanen J, Blanchet FG, Kindt R, Legendre P, Minchin PR, O'Hara RB, et al. *vegan*: Community Ecology Package R package version 2.3-0. 2015. <http://CRAN.R-project.org/package=vegan>.
73. Lozupone C, Lladser ME, Knights D, Stombaugh J, Knight R. UniFrac: an effective distance metric for microbial community comparison. *ISME J.* 2011;5:169–72.
74. Harris RF. Effect of water potential on microbial growth and activity. In: Water Potential Relations in Soil Microbiology. Parr JF, Gardner WR, Elliott LF, editors. Madison, WI: Am Soc Agron; 1981. p. 23–95.
75. Wagg C, Dudenhöffer JH, Widmer F, van der Heijden MGA. Linking diversity, synchrony and stability in soil microbial communities. *Funct Ecol.* 2018;32:1280–92.
76. Malik AA, Martiny JBH, Brodie EL, Martiny AC, Treseder KK, Allison SD. Defining trait-based microbial strategies with consequences for soil carbon cycling under climate change. *ISME J.* 2020;14:1–9.
77. Tiemann LK, Billings SA. Changes in variability of soil moisture alter microbial community C and N resource use. *Soil Biol Biochem.* 2011;43:1837–47.
78. Domeignoz-Horta LA, Pold G, Liu XJA, Frey SD, Melillo JM, DeAngelis KM. Microbial diversity drives carbon use efficiency in a model soil. *Nat Commun.* 2020;11:3684.
79. Gefen O, Balaban NQ. The importance of being persistent: heterogeneity of bacterial populations under antibiotic stress. *FEMS Microbiol Rev.* 2009;33:704–17.
80. Fridman O, Goldberg O, Ronin I, Shoshani N, Balaban NQ. Optimization of lag time underlies antibiotic tolerance in evolved bacterial populations. *Nature.* 2014;513:418–21.
81. Bouskill NJ, Wood TE, Baran R, Hao Z, Ye Z, Bowen BP, et al. Belowground response to drought in a tropical forest soil. II. Change in microbial function impacts carbon composition. *Front Microbiol.* 2016;7:323.
82. Sutcliffe IC. A phylum level perspective on bacterial cell envelope architecture. *Trends Microbiol.* 2010;18:464–70.
83. Tocheva EI, Ortega DR, Jensen GJ. Sporulation, bacterial cell envelopes and the origin of life. *Nat Rev Microbiol.* 2016;14:535–42.
84. Xu L, Naylor D, Dong Z, Simmons T, Pierroz G, Hixson KK, et al. Drought delays development of the sorghum root microbiome and enriches for monoderm bacteria. *Proc Natl Acad Sci USA.* 2018;115:E4284–93.
85. Santos-Medellin C, Liechty Z, Edwards J, Nguyen B, Huang B, Weimer BC, et al. Prolonged drought imparts lasting compositional changes to the rice root microbiome. *Nat Plants.* 2021;7:1065–77.
86. Otoguro M, Yamamura H, Quintana ET The Family *Streptosporangiaceae*. In: The Prokaryotes. Rosenberg E, DeLong EF, Lory S, Stackebrandt E, Thompson F, editors. Berlin, Heidelberg: Springer; 2104. p. 1011–45.
87. Barnard RL, Osborne CA, Firestone MK. Responses of soil bacterial and fungal communities to extreme desiccation and rewetting. *ISME J.* 2013;7:2229–41.
88. Cruz AF, Ishii T. Arbuscular mycorrhizal fungal spores host bacteria that affect nutrient biodynamics and biocontrol of soil-borne plant pathogens. *Biol Open.* 2012;1:52–7.
89. Rillig MC, Lutgen ER, Ramsey PW, Klironomos JN, Gannon JE. Microbiota accompanying different arbuscular mycorrhizal fungal isolates influence soil aggregation. *Pedobiologia.* 2005;49:251–9.
90. Jiang F, Zhang L, Zhou J, George TS, Feng G. Arbuscular mycorrhizal fungi enhance mineralisation of organic phosphorus by carrying bacteria along their extraradical hyphae. *N Phytol.* 2021;230:304–15.
91. Hernandez DJ, David AS, Menges ES, Searcy CA, Afkhami ME. Environmental stress destabilizes microbial networks. *ISME J.* 2021;15:1722–34.
92. Leigh J, Fitter AH, Hodge A. Growth and symbiotic effectiveness of an arbuscular mycorrhizal fungus in organic matter in competition with soil bacteria. *FEMS Microbiol Ecol.* 2011;76:428–38.
93. Leifheit EF, Verbruggen E, Rillig MC. Arbuscular mycorrhizal fungi reduce decomposition of woody plant litter while increasing soil aggregation. *Soil Biol Biochem.* 2015;81:323–8.
94. Bronstein JL. Conditional outcomes in mutualistic interactions. *Trends Ecol Evol.* 1994;9:214–7.
95. Toljander JF, Lindahl BD, Paul LR, Elfstrand M, Finlay RD. Influence of arbuscular mycorrhizal mycelial exudates on soil bacterial growth and community structure. *FEMS Microbiol Ecol.* 2007;61:295–304.
96. Zhang L, Zhou J, George TS, Limpens E, Feng G. Arbuscular mycorrhizal fungi conducting the hyphosphere bacterial orchestra. *Trends Plant Sci.* 2022;27:402–11.
97. Zhalnina K, Louie KB, Hao Z, Mansoori N, Nunes da Rocha U, Shi S, et al. Dynamic root exudate chemistry and microbial substrate preferences drive patterns in rhizosphere microbial community assembly. *Nat Microbiol.* 2018;3:470–80.
98. Chaparro JM, Badri DV, Bakker MG, Sugiyama A, Manter DK, Vivanco JM. Root exudation of phytochemicals in *Arabidopsis* follows specific patterns that are developmentally programmed and correlate with soil microbial functions. *PLoS ONE.* 2013;8:e55731.
99. Shi S, Richardson AE, O'Callaghan M, DeAngelis KM, Jones EE, Stewart A, et al. Effects of selected root exudate components on soil bacterial communities. *FEMS Microbiol Ecol.* 2011;77:600–10.

ACKNOWLEDGEMENTS

We thank Christine Hawkes for *P. hallii* seeds; Eric Slessarev for soil collection; Aaron Chew for measuring soil water potential; Megan Foley, Anne Kakouridis, Benjamin

Koch, and Alexa Nicolas for scientific discussions; Christina Ramon for procurement; Katerina Estera-Molina, Don Herman, Ilexis Chu Jacoby, Aaron Chew, Christina Fossum, Mengting Yuan, Tasnim Ahmed, Cynthia-Jeanette Mancilla, Melanie Rodriguez-Fuentes, David Sanchez, Laura Adame, Emily Kline, Madeline Moore, Jack Hagen, Anne Kakouridis, Ella Sieradzki, Nameer Baker, Sarah Baker, Alex Greenlon, Heejung Cho, Alexa Nicolas, Peter Weber, Vanessa Brisson, Eric Slessarev, Gareth Trubl, Dinesh Adhikari, Craig See, Maria Guerra, Rachel Neurath, and Evan Starr for their assistance with experimental set up, maintenance, and harvests; and Tibisay Perez and Whendee Silver for assistance with GC access and operation. This work was supported by the Genomic Science Program of the US Department of Energy Office of Biological and Environmental Research as part of the LLNL Biofuels SFA (SCW1039) and a sustainable bioenergy award (PI Firestone) to UC Berkeley (DE-SC0014079), Noble Research Institute, University of Oklahoma, Lawrence Berkeley National Laboratory, and Lawrence Livermore National Laboratory (SCW1555). Research at LLNL was performed under the auspices of the U.S. Department of Energy at Lawrence Livermore National Laboratory under Contract DE-AC52-07NA27344.

AUTHOR CONTRIBUTIONS

RH, JPR, and EEN designed the experiment, with input from MF, KC, RS, and PR. RH conducted the experiment, with help from MK, EEN, JPR, MF, and RS. ML fractionated and quantified the DNA SIP samples. JW conducted qPCR analyses. JAK and SJB assisted with bioinformatic and qSIP analyses. RH analyzed the data and drafted the manuscript, with input from JPR, EEN, RS, JAK, SJB, and MF. All authors contributed to the final paper.

COMPETING INTERESTS

The authors declare no competing interests.

ADDITIONAL INFORMATION

Supplementary information The online version contains supplementary material available at <https://doi.org/10.1038/s41396-022-01308-6>.

Correspondence and requests for materials should be addressed to Rachel Hestrin or Jennifer Pett-Ridge.

Reprints and permission information is available at <http://www.nature.com/reprints>

Publisher's note Springer Nature remains neutral with regard to jurisdictional claims in published maps and institutional affiliations.



Open Access This article is licensed under a Creative Commons Attribution 4.0 International License, which permits use, sharing, adaptation, distribution and reproduction in any medium or format, as long as you give appropriate credit to the original author(s) and the source, provide a link to the Creative Commons licence, and indicate if changes were made. The images or other third party material in this article are included in the article's Creative Commons licence, unless indicated otherwise in a credit line to the material. If material is not included in the article's Creative Commons licence and your intended use is not permitted by statutory regulation or exceeds the permitted use, you will need to obtain permission directly from the copyright holder. To view a copy of this licence, visit <http://creativecommons.org/licenses/by/4.0/>.

© The Author(s) 2022