

# UCLA

## UCLA Previously Published Works

### Title

Single Particle Electron Microscopy Analysis of the Bovine Anion Exchanger 1 Reveals a Flexible Linker Connecting the Cytoplasmic and Membrane Domains

### Permalink

<https://escholarship.org/uc/item/6r3949n0>

### Journal

PLOS ONE, 8(2)

### ISSN

1932-6203

### Authors

Jiang, Jiansen  
Magilnick, Nathaniel  
Tsirulnikov, Kirill  
[et al.](#)

### Publication Date

2013

### DOI

10.1371/journal.pone.0055408

Peer reviewed

# Single Particle Electron Microscopy Analysis of the Bovine Anion Exchanger 1 Reveals a Flexible Linker Connecting the Cytoplasmic and Membrane Domains

Jiansen Jiang<sup>1,2,3</sup>, Nathaniel Magilnick<sup>3,3</sup>, Kirill Tsurulnikov<sup>3,3</sup>, Natalia Abuladze<sup>3</sup>, Ivo Atanasov<sup>1</sup>, Peng Ge<sup>1</sup>, Mohandas Narla<sup>4</sup>, Alexander Pushkin<sup>3\*</sup>, Z. Hong Zhou<sup>1,2\*</sup>, Ira Kurtz<sup>3,5\*</sup>

**1** Department of Microbiology, Immunology and Molecular Genetics, and California NanoSystems Institute, University of California Los Angeles, Los Angeles, California, United States of America, **2** Structural Computational Biology and Molecular Biophysics Program, Baylor College of Medicine, Houston, Texas, United States of America, **3** Department of Medicine, D. Geffen School of Medicine at University of California Los Angeles, Los Angeles, California, United States of America, **4** New York Blood Centre, New York, New York, United States of America, **5** Brain Research Institute, University of California Los Angeles, Los Angeles, California, United States of America

## Abstract

Anion exchanger 1 (AE1) is the major erythrocyte membrane protein that mediates chloride/bicarbonate exchange across the erythrocyte membrane facilitating CO<sub>2</sub> transport by the blood, and anchors the plasma membrane to the spectrin-based cytoskeleton. This multi-protein cytoskeletal complex plays an important role in erythrocyte elasticity and membrane stability. An in-frame AE1 deletion of nine amino acids in the cytoplasmic domain in a proximity to the membrane domain results in a marked increase in membrane rigidity and ovalocytic red cells in the disease Southeast Asian Ovalocytosis (SAO). We hypothesized that AE1 has a flexible region connecting the cytoplasmic and membrane domains, which is partially deleted in SAO, thus causing the loss of erythrocyte elasticity. To explore this hypothesis, we developed a new non-denaturing method of AE1 purification from bovine erythrocyte membranes. A three-dimensional (3D) structure of bovine AE1 at 2.4 nm resolution was obtained by negative staining electron microscopy, orthogonal tilt reconstruction and single particle analysis. The cytoplasmic and membrane domains are connected by two parallel linkers. Image classification demonstrated substantial flexibility in the linker region. We propose a mechanism whereby flexibility of the linker region plays a critical role in regulating red cell elasticity.

**Citation:** Jiang J, Magilnick N, Tsurulnikov K, Abuladze N, Atanasov I, et al. (2013) Single Particle Electron Microscopy Analysis of the Bovine Anion Exchanger 1 Reveals a Flexible Linker Connecting the Cytoplasmic and Membrane Domains. PLoS ONE 8(2): e55408. doi:10.1371/journal.pone.0055408

**Editor:** Michael Koval, Emory University School of Medicine, United States of America

**Received:** September 19, 2012; **Accepted:** December 21, 2012; **Published:** February 5, 2013

**Copyright:** © 2013 Jiang et al. This is an open-access article distributed under the terms of the Creative Commons Attribution License, which permits unrestricted use, distribution, and reproduction in any medium, provided the original author and source are credited.

**Funding:** This work was supported in part by the National Institutes of Health grants DK077162 and DK058563 (I.K.), and GM071940 (Z.H.Z.), and the American Heart Association Western State Affiliate grant 10GRNT4140074 (A.P.). Jiansen Jiang is a recipient of a postdoctoral fellowship from the National Kidney Foundation Serving Southern California and Southern Nevada. The funders had no role in study design, data collection and analysis, decision to publish, or preparation of the manuscript.

**Competing Interests:** The authors have declared that no competing interests exist.

\* E-mail: ikurtz@mednet.ucla.edu (IK); Hong.Zhou@ucla.edu (ZH); apushkin@mednet.ucla.edu (AP)

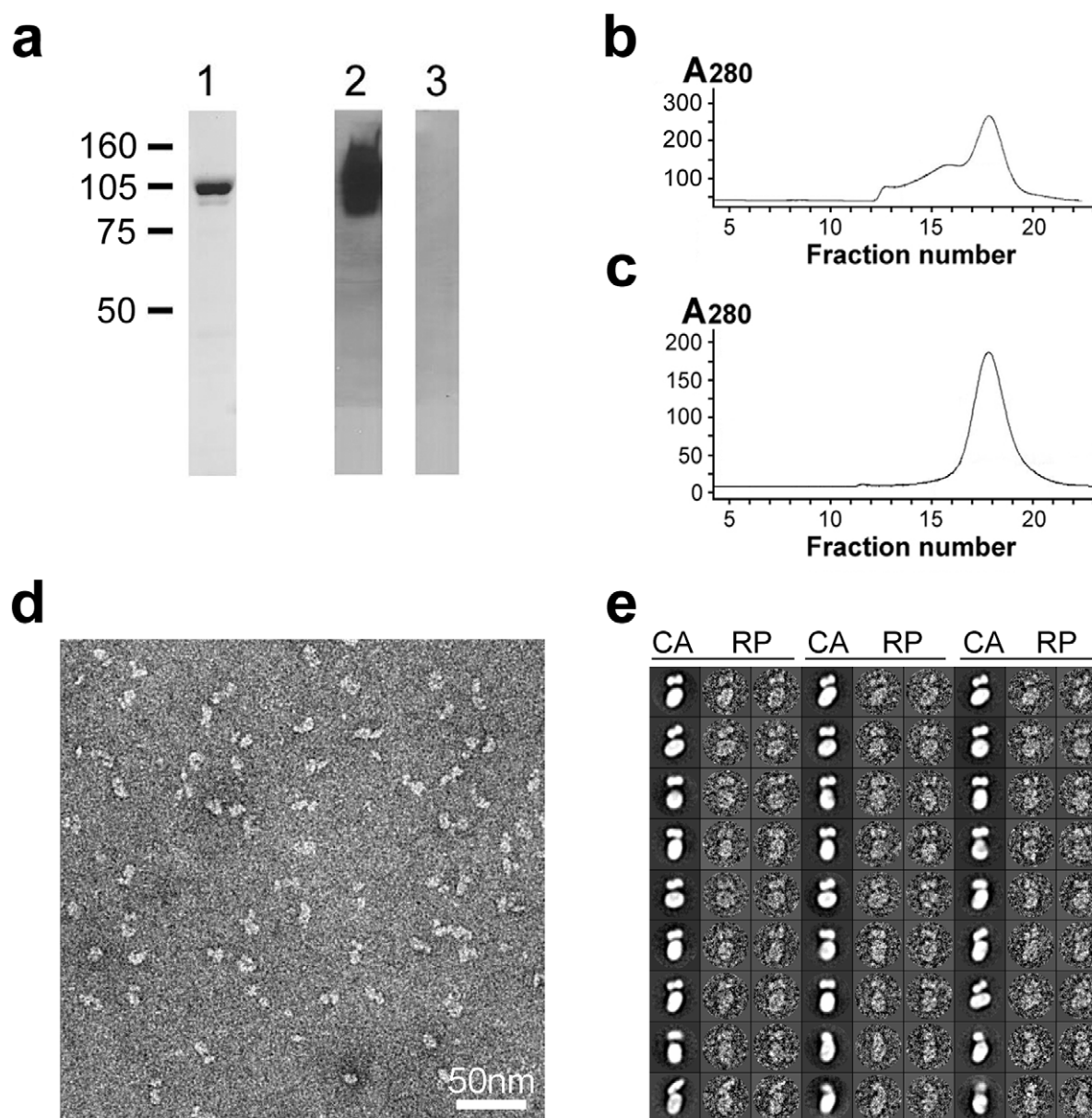
† These authors contributed equally to this work.

## Introduction

AE1 is a major membrane protein in erythrocytes (25 to 30% of the total membrane mass) that mediates anion exchange and participates in control of the erythrocyte shape [1,2,3,4,5,6]. AE1 also participates in the formation of a senescent cell antigen in aged erythrocytes [7]. The structure of AE1 is likely altered in several pathological conditions including thalassemia, sickle cell anemia, and red cells harboring the malaria parasite *Plasmodium falciparum* [8,9,10,11,12,13]. In the erythrocyte membrane, AE1 forms oligomers that are predominantly dimers and tetramers. The AE1 monomer (~100 kDa) consists of an ~45 kDa N-terminal cytoplasmic domain and an ~53 kDa C-terminal membrane domain [1,2]. The C-terminal membrane domain is involved in mediating anion exchange. The N-terminal cytoplasmic domain provides binding sites for many proteins, including ankyrin, band 4.2 and band 4.1 proteins, glycolytic enzymes, hemoglobin, deoxyhemoglobin, hemichromes, p72syk protein tyrosine kinase, adducin and integrin-linked kinase [2,3,6,14,15]. Glycolytic enzymes, hemichromes and deoxyhemoglobin bind to

the negatively charged extreme N-terminus of AE1 via electrostatic interactions. AE1 connects the spectrin-based cytoskeleton to lipid bilayer via ankyrin [1,2,3,15] and adducing [6,16]. It is widely accepted that interactions between AE1 and the membrane cytoskeleton play a role in mediating erythrocyte shape control [2,3,14,15,16]. Quantitative deficiency of AE1 resulting in decreased anchoring of the lipid bilayer to the membrane cytoskeleton leads to loss of membrane cohesion and resultant membrane surface area loss and generation of spherocytic red cells in hereditary spherocytosis [17]. On the other hand, a qualitative defect resulting in an in-frame deletion of nine amino acids in the cytoplasmic domain of AE1 [2,18], results in a marked increase in membrane rigidity and ovalocytic red cells in Southeast Asian Ovalocytosis (SAO).

Since AE1 is a highly abundant membrane protein with a million copies in each red cell and pure plasma membrane can be readily obtained from enucleated red cells, it should be one of the very few membrane proteins that can be directly purified from natural membranes. However, the high heterogeneity of natural



**Figure 1. Purification and EM of bovine AE1.** (a) SDS-PAGE of bovine AE1 after ion-exchange chromatography. Lane 1: Coomassie stained gel; Lanes 2,3: immunoblotting, 2: immune serum; 3: preimmune serum. (b,c) Size-exclusion chromatography examination of bovine AE1 sample after the ion-exchange chromatography step (top) and the dimer fraction after the size-exclusion chromatography step (c) showing a peak corresponding to dimeric AE1. (d) A representative area of transmission EM micrograph of bovine dimeric AE1 stained with 1% uranyl formate. (e) Representative class averages (CA) and the corresponding raw particle (RP) images of AE1. Each class average is obtained by averaging about 100 particle images. The side length of each box is 26 nm.  
doi:10.1371/journal.pone.0055408.g001

AE1 because of various covalent modifications, the presence of different oligomeric forms and complexes with other erythrocyte proteins has made it very difficult to purify in a highly homogeneous form for structural studies. In addition, treatment with chaotropic agents and non-physiological alkaline pH used in the separation of accessory proteins from AE1 can significantly change its native structure [1,19,20,21]. Indeed, an earlier electron microscopy (EM) study of negatively stained AE1 purified from KI/EDTA stripped human erythrocyte membranes revealed a high level of heterogeneity in size and shape [22]. The calculated average mass of AE1-detergent micelles in octyl-POE and  $C_{12}E_8$  was  $\sim 1,500$  and  $\sim 500$  kDa, respectively. Despite its heterogeneity,

octyl-polyoxyethylene solubilized AE1 formed two-dimensional (2D) arrays (unit cell dimensions:  $a=b=\sim 11$  nm) in the presence of dimyristoyl phosphatidylcholine [22]. Each unit cell contained three elongated densities hypothesized to be three AE1 dimers, but the membrane and cytoplasmic domains were not resolved.

Additional attempts to determine the structure of AE1 have involved separately studying the membrane and cytoplasmic domains. The membrane domain generated by trypsin digestion of purified human AE1 was reconstituted into 2D sheets with lipids [19]. Electron crystallography of negatively stained 2D crystals revealed a U-shaped  $6\times 11$  nm structure with a thickness of 8 nm

[20]. Recently, 2D crystals of the human AE1 membrane domain, generated by trypsin digestion of erythrocyte membranes and trihalose-embedding, were used to generate a 7.5 Å resolution structure by electron crystallography [23]. However, the structure revealed only 7 of the expected 14 transmembrane helices, likely because the alkaline treatment with 0.1 M NaOH used for stripping of accessory proteins from AE1 had significantly modified the topology of the membrane domain [24]. A 3D crystal of the membrane domain of the human AE1 was first reported in 2002, but it only diffracted X-rays to ~14 Å and was insufficient for structural determination [21]. The 3D structure of the cytoplasmic domain (aa. 1–379) of human AE1 was solved by X-ray crystallography to 2.6 Å resolution [14]. The structure revealed a rectangular prism-shaped symmetrical dimer stabilized by interlocking arms. Residues 1–54, 202–211 and 357–379 were not visible in this crystal structure, suggesting their flexibility. Because none of these structures provides the spatial organization of full-length AE1, it remains unclear whether the cytoplasmic domain is tightly linked to membrane domain, or whether it can move relative to the membrane domain as has been proposed [18]. Such elasticity could be mediated by a flexible linker region between the cytoplasmic and membrane domains. Although it is currently impossible to precisely localize the linker area, it likely involves aa. 357–408. The selection of the first amino acid residue (aa. 357) is based on the flexibility of aa. 357–379 in the crystallography structure of the cytoplasmic domain [14]. The location of the last residue (aa. 408) is selected on the basis of current topology models predicting the first transmembrane segment in the membrane domain starting from aa. 401 or 409 [1,2,3,4,5,6]. The SAO mutation (aa. 400–408) resulting in a marked increase in membrane rigidity and ovalocytic red cells also suggests that aa. 400–408 are located in the C-terminal part of the linker [18]. In addition, the secondary structure analysis of aa. 357–408 using different prediction models suggests mostly coiled structure for this region.

In the present study, we obtained biochemically homogeneous, native full-length AE1 dimers by using a non-denaturing purification method. By single particle EM reconstruction we show that the AE1 dimer has an elongated structure consisting of a double-humped cytoplasmic domain and an oval-shaped membrane domain tethered by two linkers. Image classification revealed groups of AE1 dimers with different tilt orientations of cytoplasmic domain relative to the membrane domain suggesting flexibility of the two linkers that connect the cytoplasmic domain to the anchored membrane domain. This linker's flexibility points to a novel pivot mechanism by which AE1 is involved in regulating membrane elasticity, a critical determinant of shape changes necessary for the red cells to transit through capillaries whose dimensions are much smaller than that of the cell.

## Materials and Methods

### Preparation of Erythrocyte Ghosts

Bovine AE1 is not glycosylated [25] and less heterogeneous, and therefore was used in our study. Bovine erythrocyte ghosts were prepared from whole bovine blood (Quad Five) according to Casey and Reithmeier [26] with our modifications in order to preserve native structure of AE1. Fresh defibrinated whole bovine blood was washed 5 times with PBS. This and all following steps were performed at 4°C. Supernatant after centrifugation for 10 min at 3,000 g and a thin top layer of white cells were removed. Red cells were suspended (1:10) in 5 mM Na phosphate, pH 8.0, containing complete protease inhibitors cocktail (Roche) and 0.2 mM dithiothreitol (DTT). After overnight incubation the

suspension was centrifuged for 40 min at 30,000 g. The supernatant was discarded and the upper less dense pellet layer was resuspended in the same buffer containing 0.5 M NaCl and 1 mM EDTA, and then centrifuged again for 40 min at 30,000 g. The operation was repeated up to 10 times until the supernatant was colorless (no hemoglobin is present). At this point only one layer was present in the pellet. The pellet was washed twice in PBS and centrifuged at 30,000 g for 40 min. The final pellet was resuspended in PBS (1:10) and used directly for AE1 purification or kept frozen at –80°C.

### AE1 Purification

The heterogeneity of natural human AE1 has prevented its purification in a highly homogeneous form required for structural studies. Given that there is significantly lesser heterogeneity of bovine AE1 [25] and a very high sequencing homology (77% identity, 86% homology) between the human and bovine AE1 proteins, we used bovine AE1 instead of human AE1 in the current study. We also excluded alkaline and chaotropic agent treatments of erythrocyte membranes used in previous studies to strip complexed proteins from AE1 that have been shown to significantly change its native structure [1,27] [24].

The ghost suspension from the previous step was pelleted at 30,000 g for 40 min. The pellet was mixed (1:20) with 100 mM Tris-HCl, pH 7.5, containing complete protease inhibitors cocktail (Roche) and 2% dodecyl maltoside (DDM, Anatrace). After 2 h incubation, the suspension was centrifuged at 18,000 g for 40 min. The supernatant was loaded onto a 3×5 cm column of DE-52 (Whatman) equilibrated with 50 mM Tris-HCl, containing 0.03% DDM. Proteins were eluted from the column with a linear 0–0.5 M NaCl gradient in the same buffer. AE1 was eluted with 0.3–0.5 M NaCl. The fractions containing AE1 were collected and concentrated to ~10 mg/ml protein concentration using a Centricon 50 centrifuge filter device (Millipore). The concentrated sample was further subjected to size-exclusion chromatography to obtain the dimeric form of AE1. Approximately 0.3 ml of the concentrated AE1 solution was loaded on a Superose 6™ 10/300 column (GE HealthCare) equilibrated with 50 mM Tris-HCl, pH 7.5, containing 0.03% DDM and 0.15 M NaCl. The fraction containing the AE1 dimer was immediately used for EM grids preparation.

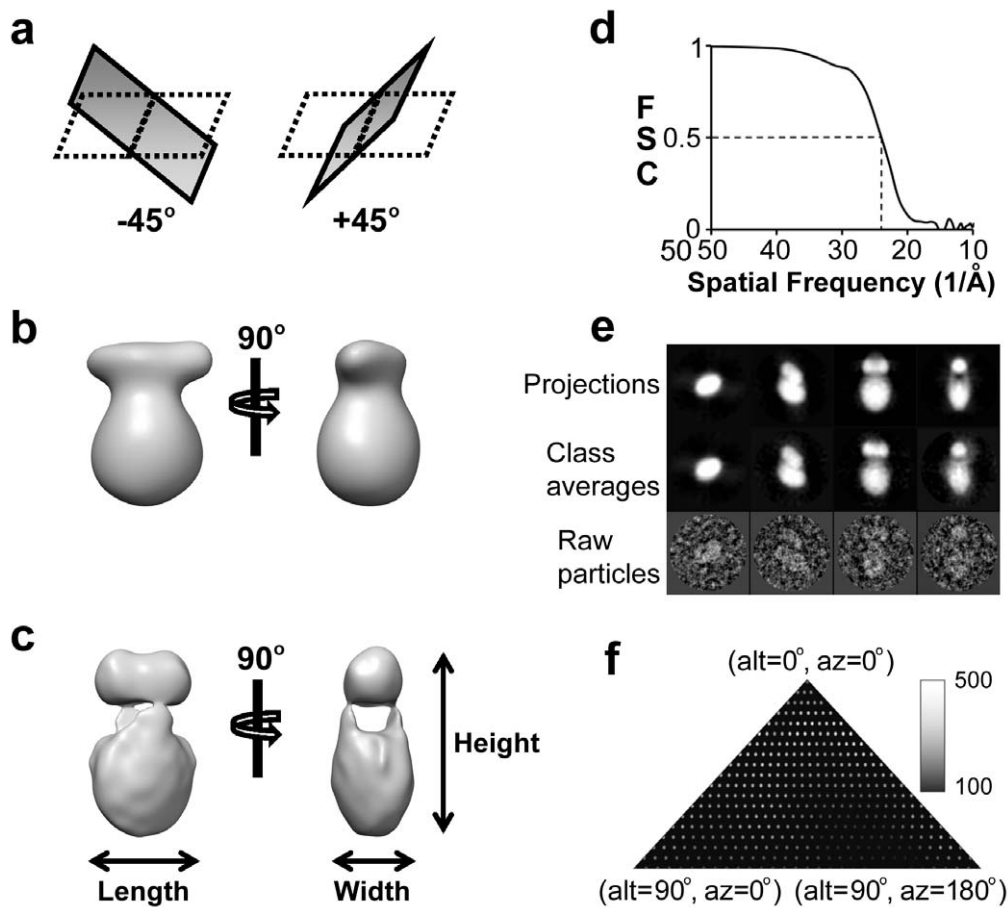
### SDS-PAGE and Immunoblotting

SDS-PAGE was performed using pre-fabricated 7.5% polyacrylamide gels from Bio-Rad [28]. The gels were stained for proteins with Coomassie Blue R (Sigma) or electrotransferred onto PVDF membranes (GE Health Care). Our bovine AE1 specific antibody bAE1-A1 raised in rabbit was used at a 1:1,000 dilution. A secondary horseradish peroxidase (HP) conjugated mouse anti-rabbit antibody (Jackson Immunoresearch) was used at a dilution 1:10,000. AE1 bands were visualized using an ECL kit and Hyperfilm ECL (GE Health Care).

### EM Data Collection

Freshly prepared bovine AE1 dimers were negatively stained with 0.8% uranyl formate on grids coated with carbon film. Micrographs were then recorded on a 4k×4k CCD camera at 70,000× magnification using Legikon [29,30] in an FEI Tecnai F20 electron microscope operated at 200 kV. Two types of images were recorded: tilted for orthogonal tilt reconstruction (OTR) and untilted for in-depth 2D image classification and 3D structure refinement.

For OTR images, the grid was tilted at two orthogonal angles (–45° and +45°) to acquire a pair of micrographs for each



**Figure 2. Single-particle reconstruction of bovine AE1.** (a) Schematic illustration of the OTR data collection method. For each target sample area, two micrographs were recorded with the grid tilted at  $-45^\circ$  and  $+45^\circ$ , respectively. (b) 3D map generated by averaging 25 OTR maps. Two orthogonal views, defined as front view (left panel) and side view (right panel), are shown. (c) Final map obtained by merging 174,197 particle images with single particle reconstruction method. The map in (c) is shown in the same orientations as in (b). (d) Fourier shell correlation (FSC) coefficient between two reconstructions obtained from even- and odd-numbered particle images. The effective resolution is estimated to be 2.4 nm using the 0.5 FSC cut-off. (e) Comparisons of the computed projection, class average, and raw particle. Four representative views (top, tilt, front, and side) are shown from left to right, respectively. (f) Euler angle distribution of classified particles. The brightness of each point indicates the number of particles used in the class average in that orientation. doi:10.1371/journal.pone.0055408.g002

specimen area of interest, one micrograph at each tilt angle. In total, 358 sets of tilt pairs were collected.

For 2D image analysis and 3D structure refinement, 1275 micrographs were collected without tilting the grid. In total, 174,197 particles were extracted from the best 669 micrographs. These micrographs have defocus values ranging from  $-1.0$  to  $-1.8 \mu\text{m}$ , as determined by CTFIND [31].

### Orthogonal Tilt Reconstruction (OTR) using Tilt Images

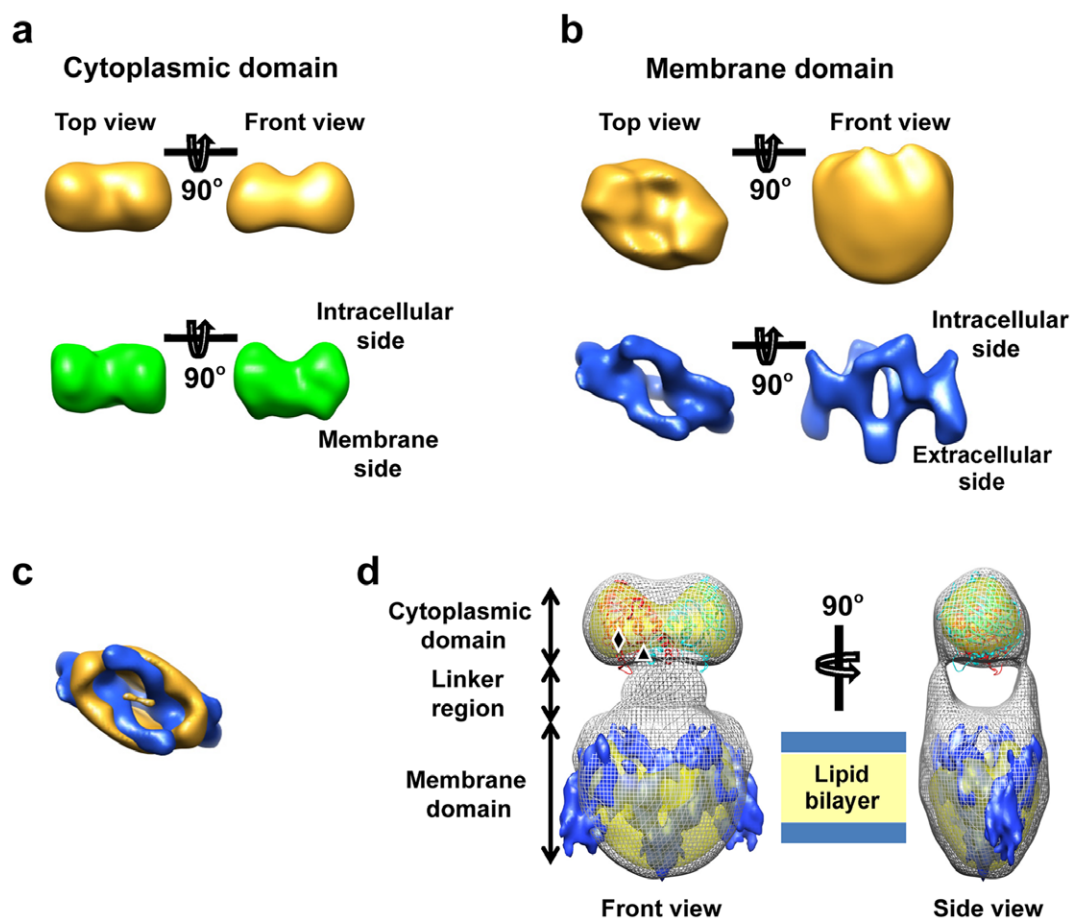
For OTR, we obtained two image data sets for each specimen area: a  $-45^\circ$  tilt set and a  $+45^\circ$  tilt set. Particles in the  $-45^\circ$  tilt set were used for classification and particles in the  $+45^\circ$  tilt set were used for 3D reconstructions. The following procedure was used to obtain reliable 3D maps without using initial models, thus eliminating possible model bias.

Corresponding particles from tilt pairs were picked out automatically by the *ApTiltPicker.py* program in Appion [32,33] and verified by manual inspection. 132,517 pairs of particles were selected. The 132,517 particle images in the  $-45^\circ$  tilt particle set were classified for 9 iterations with the *refine2d.py* program in EMAN to generate 100 class averages. These class averages were

then used as references to align the same particles with SPIDER [34] and subsequently classified these aligned particles into 100 classes using the correspondence analysis method (i.e., *CA S* command) in SPIDER.

All particles in each class of the  $-45^\circ$  tilt set have the same feature (i.e., same view), but their corresponding particles in the  $+45^\circ$  tilt set represent different views, which we called *ortho-views* of the class. Ortho-views of the same class have different orientation parameters, which were calculated based on the  $90^\circ$  tilt angle difference and the in-plane rotation parameters using a custom script called *combine\_ang.bat*. From the ortho-views associated with each class, we obtained one 3D OTR map. Since we had 100 classes in the  $-45^\circ$  tilt particles, we obtained a total of 100 OTR maps from the  $+45^\circ$  tilt particles. These maps were improved iteratively by using center parameters refined by aligning ortho-views against their projections computed from the 3D OTR maps.

To select the best from these 100 OTR 3D maps, we further evaluated them against class averages of the  $-45^\circ$  tilt particle set. In this procedure, for each OTR map, we made one computed projection at orientation (0, 0, 0), which corresponds to the orientation of the associated class average in the  $-45^\circ$  tilt particle



**Figure 3. Fitting of the atomic structure of cytoplasmic domain [14] and the 7.5 Å resolution 2D crystal structure of membrane domain [23] into our 3D map of full-length AE1 dimer.** (a) Shaded surface views of the atomic structure of cytoplasmic domain (PDB ID: 1HYN) filtered to 2.4 nm resolution (green) compared to the corresponding views of cytoplasmic domain resolved in the EM single-particle reconstruction (gold) of full-length AE1 dimer. In the EM map, the membrane domain of AE1 dimer is removed for clarity. The two structures are similar in size and in having a double-humped shape on their cytoplasmic side. (b) Shaded surface views of AE1 membrane domain resolved from 2D crystals embedded in trehalose (EMDB ID: 1645) filtered to 2.4 nm resolution (blue), as compared to the corresponding views of membrane domain resolved in the EM single-particle reconstruction (gold). The extracellular and intracellular sides identified in the published 2D crystal structure were used to define the orientation for comparison. (c) Superposition of the two structures of membrane domains described in (b) viewed from the cytoplasmic side (top view). The EM single-particle reconstruction is rendered at higher density threshold to show the deep canyon, which is consistent with the membrane domain structure from 2D crystals. (d) Fitting the EM single-particle reconstruction of full-length AE1 dimer with the crystal structure of cytoplasmic domain (red and cyan) and 2D crystal structure of membrane domain (blue). The single-particle reconstruction is rendered in two density threshold values: at low threshold (gray mesh) and a high threshold (yellow). The approximate positions of N-terminus and C-terminus of the cytoplasmic domain are labeled with diamond and triangle, respectively.  
doi:10.1371/journal.pone.0055408.g003

set. We visually compared this projection and the class average for feature consistency and selected the best 25 OTR maps. These 25 OTR maps then aligned using the *align3d* program in EMAN [35] and averaged.

### 2D Classification and 3D Structure Refinement

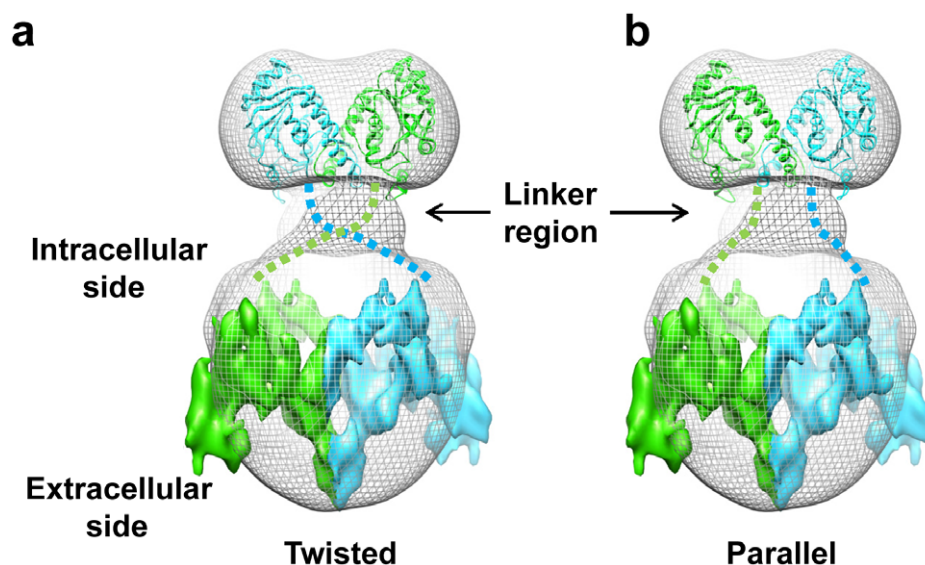
The averaged 3D OTR map was used as the starting model to align the 174,197 particles using the projection matching method in EMAN. A 3D map was obtained by combining the aligned particles and iteratively refined. The angular interval between projections was gradually decreased from 15° to 5° during the course of refinement. The map was corrected for the effect of contrast transfer function with phase flipping and imposed with 2-fold symmetry. The resolution of 3D reconstruction was estimated by FSC calculated with the *eotest* program in EMAN. The 3D model was visualized with the UCSF Chimera [36].

To assess the flexibility of cytoplasmic domain, 16,061 front-view particles and 7,644 side-view particles were selected from 174,197 particles based on the result of projection matching. Both the front-view particles and side-view particles are then classified into subgroups.

## Results

### Purification of Bovine AE1

AE1 in the erythrocyte membrane exists either in a free state or as a multi-protein complex with other erythrocyte proteins. Previous investigators extracted both pools of AE1, and used alkaline and chaotropic agents to strip off accessory proteins that have been shown to significantly change the native structure of AE1 [1,24]. In this study, we developed a non-denaturing extraction method to purify free AE1. Our protocol for AE1 purification included several steps to ensure homogeneity of the



**Figure 4. Two possible modes of monomer-monomer association in AE1 dimer.** (a) The twisted mode of dimerization. (b) The parallel mode of dimerization. The crystal structure of cytoplasmic domain (ribbon) and 2D crystal structure of membrane domain (surface) are fitted into the single-particle reconstruction of full-length AE1 dimer (gray mesh) and the two monomers (each consisting of a cytoplasmic domain and a membrane domain) are colored in green or cyan, respectively. The tentative linkers connecting cytoplasmic and membrane domains are depicted as broken lines.

doi:10.1371/journal.pone.0055408.g004

resulting AE1 preparation: (1) Depletion of erythrocyte membranes (ghosts) from accessory proteins using an optimized buffer at pH 8.0; (2) Ion-exchange chromatography to separate AE1 forms having different covalent modifications; (3) Size-exclusion chromatography to purify AE1 dimers; (4) Use of freshly prepared AE1 dimers for electron microscopy to prevent potential protein oligomerization and aggregation during storage. SDS-PAGE and size-exclusion chromatography showed the homogeneity of our bovine AE1 preparation (Fig. 1a–c).

### 3D Reconstruction of Full-length Dimeric AE1

EM micrograph of negatively stained bovine AE1 particles revealed complexes of different shapes possibly representing AE1 dimers viewed at different orientations (Fig. 1d). The class averages of particle images showed consistent features among these particles (Fig. 1e).

To reconstruct an initial 3D map of AE1 in the absence of a starting model, we used the orthogonal tilt reconstruction (OTR) approach [37], which generated reliable 3D models without having the problem of a missing cone. In total, 358 tilt pairs of micrographs were collected by tilting the EM grid at orthogonal angles ( $-45^\circ$  and  $+45^\circ$ ) for OTR (Fig. 2a). We obtained 100 independent reconstructions, from which 25 consistent ones were selected and further aligned to generate an average 3D model (Fig. 2b).

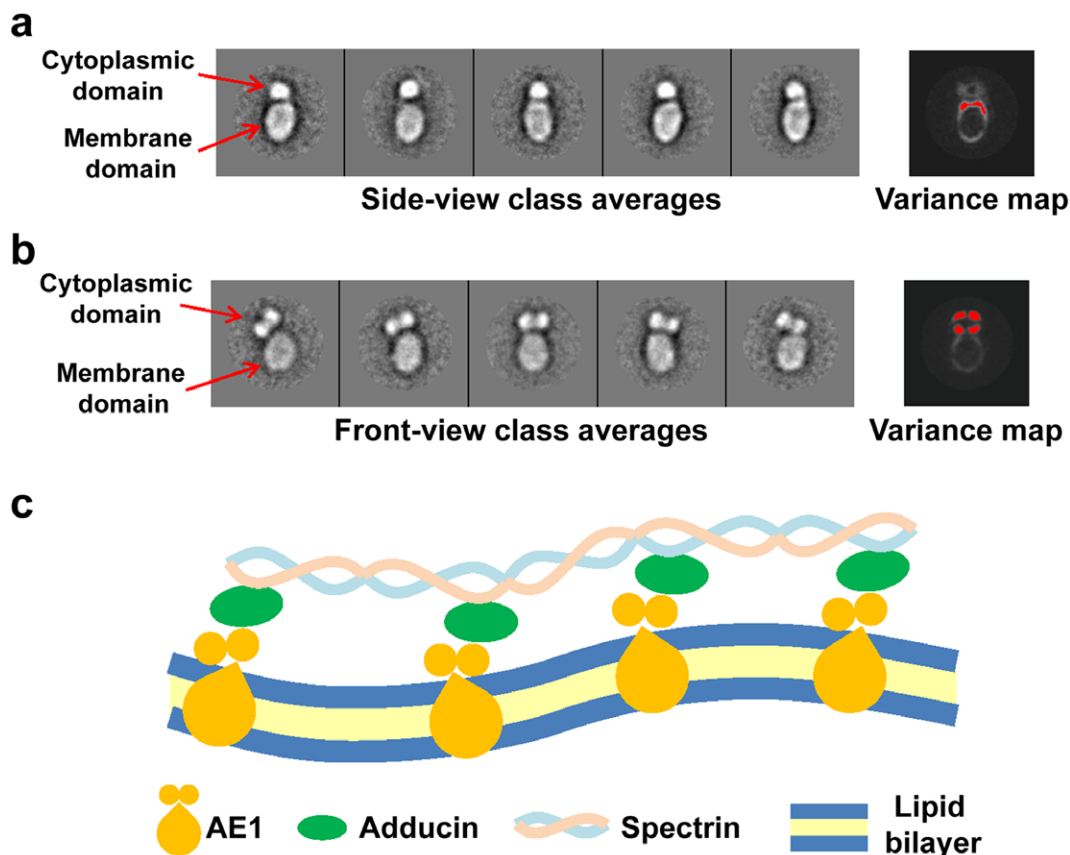
We obtained an improved reconstruction by combining 174,197 particles of untilted samples by projection matching using the above averaged OTR map as a starting model (Fig. 2c). Since the 3D crystal structure of cytoplasmic domain and the 2D crystal structure of membrane domain are available and been shown to possess 2-fold symmetry, and the 3D model from OTR looks consistent with the symmetry, 2-fold symmetry was then forced throughout the course of structure refinement. The refinement was continued until no further improvement in the structures was observed and the reconstruction resolution of the final 3D model converged at 2.4 nm at 0.5 FSC cut-off (Fig. 2d).

The 3D reconstruction was validated by good consistency in the comparisons of the computed projection from the 3D volume with the corresponding class average and raw particles (Fig. 2e). The particles on the carbon support film showed a slightly nonuniform distribution of orientation with a small region of Euler angles containing less particles (Fig. 2f). Since sufficient particle images were used, this issue was negligible to the 3D reconstruction. Even though a large number of particles were used in the 3D reconstruction, the resolution was limited to 2.4 nm due to two possible reasons: (1) the flexible orientation of the cytoplasmic domain (see below), resulting heterogeneous conformations of particles which compromised the resolution when combined to generate a 3D reconstruction; (2) the technical limitation of the negative staining (size of stain microcrystals and penetrability into ultrastuctures), as most of the reported 3D reconstructions from negatively stained samples are limited to a resolution of 2.0 nm [38].

The single-particle reconstruction of the full-length dimeric AE1 has an elongated shape ( $15 \times 9 \times 6.5$  nm) with a small and a larger structure (Fig. 2c). The small structure has a double-humped shape. The large structure has an oval shape and is not separated into two parts likely because bound detergent molecules prevent the penetration of the stain deep into the protein. The small and large portions of the structure are well separated by 3 nm gap crossed with two narrow pillar-like linkers on opposite sides (Fig. 2c).

### Localization of CYTOPLASMIC AND MEMBRANE DOMAINS in the AE1 Dimer

Our antibodies against different parts in the cytoplasmic and membrane domain of bovine AE1 did not work well on immunoelectron microscopy. Therefore we used the published 2.6 Å resolution crystal structure of the human AE1 cytoplasmic domain to localize the cytoplasmic domain in our single-particle reconstruction. Although the crystal structure of the cytoplasmic domain was solved at pH 4.8, site-directed spin labeling studies in



**Figure 5. Flexibility of AE1.** (a,b) Representative class averages and variance maps of the side-view particles (a) and the front-view particles (b). In the variance maps, the white areas indicate high variance and the areas with statistical significance ( $>4\sigma$ ) are highlighted with red color. Note that relative orientation of the projection density corresponding to cytoplasmic domain to that of membrane domain remains uniform in (a) but varies in (b), suggesting flexibility of the connecting linkers in the sideward direction. The variance maps in (a) and (b) were calculated from 24 and 58 class averages, respectively. The side length of boxes in (a) and (b) is 34 nm. (c) Mechanistic diagram illustrating AE1 association with the cytoskeleton and how its connector flexibility contributes to erythrocyte shape control. The tilting of the cytoplasmic membrane is induced when the erythrocyte membrane is deformed. The connector acts as a pivot between the cytoplasmic and the membrane domains.  
doi:10.1371/journal.pone.0055408.g005

combination with conventional electron paramagnetic resonance and double electron resonance spectroscopy performed at neutral pH demonstrated that the structure of the cytoplasmic domain (residues 55–356) is indistinguishable from the crystal structure determined at pH 4.8 [39].

The dimeric crystal structure of the cytoplasmic domain filtered to 2.4 nm resolution resembles the small end of the EM reconstruction, in the overall size and in having a double-humped shape (Fig. 3a). The ribbon models of the crystal structure of the cytoplasmic domain fit well with the smaller end of our map (Fig. 3d). In this fitting, the C-terminus of the atomic structure of the cytoplasmic domain, which is the N-terminal portion of the full-length AE1, is positioned next to the linker density. We therefore conclude that the small portion resolved in the single-particle reconstruction corresponds to two copies of the cytoplasmic domain. By inference, the membrane domain of AE1 was assigned to the large end of the elongated structure. Indeed, the 2.6 Å resolution crystal structure of the human AE1 cytoplasmic domain did not fit the proposed membrane domain (data not shown). The large end of the elongated structure better fit the 7.5 Å resolution structure of the membrane domain determined by electron crystallography (Fig. 3b). The best fit gave an orientation with the extracellular side of the 2D crystal structure away from the cytoplasmic domain and the intracellular side

facing the connector region in our single particle reconstruction model. Both structures have a deep canyon facing the linkers (Fig. 3c). In addition, the canyon-like feature was also observed in the 3D map reconstructed from a negatively stained 2D crystal of the AE1 membrane domain [20]. Flipping the orientation of the fitted 2D crystal structure generated mismatches in many regions, including this canyon. Noticeable differences were identified between our structure and the 2D crystal structure of the membrane domain [23]. First, a small portion of the 2D crystal structure protrudes out from the EM density map (Fig. 3d). Second, the single-particle model has smooth surface without the protruding “spikes” that are present in the 2D crystal structure. These differences are likely due to the alkaline treatment used to deplete accessory proteins from human AE1 to obtain the membrane domain used for 2D crystallization [23] that could have significantly changed/denatured its structure as previously demonstrated [24].

Our single particle reconstruction of full-length AE1 clearly shows that the cytoplasmic and membrane domains are connected through two well separated linker densities (Fig. 3d, right panel). Each linker has a pillar shape and is about  $1.5 \times 3$  nm in dimension. However, due to the limited resolution of the map, we could not separate the two copies of membrane domains in the large end. For this reason, there are two possible linking



topologies, a twisted one or a parallel one, to connect the cytoplasmic and membrane domains between the two ends (Fig. 4).

### Flexibility of Connecting Linkers

To estimate the level of rigidity of the linkers between the cytoplasmic and membrane domains, we selected the front-view and side-view particles (as defined in Fig. 2b,c) and then classified them into sub-classes. In the sub-classes from side-view group, the relative orientations between membrane and cytoplasmic domains are constant (Fig. 5a). In contrast, among the sub-classes from the front-view group, the relative orientations between the two domains vary (Fig. 5b and Movie S1). The distance between cytoplasmic and membrane domains is constant, but the cytoplasmic domain is observed tilting up to 45° along the pivot of the connector region, suggesting significant motions between the domains. The fitting results suggest that the two linkers connecting membrane and cytoplasmic domains are located at the two opposite sides of the side-view particles. Assuming each linker maintains a constant length but hinges around its connecting point with membrane domain, it would allow a tilting motion like that of a teeterboard. The observation that the tilting motion is detected in the front view, but not in the side view, agrees with the teeterboard model of flexibility of the full-length dimeric AE1.

### Discussion

A unique feature of erythrocytes is their ability to squeeze through capillaries of a significantly smaller size than their diameter, and then rapidly restore their original shape following exit into larger blood vessels. Two major mechanisms have been proposed to explain this unique shape and mechanical properties of erythrocytes: the bilayer couple hypothesis and the protein network thesis [40,41]. Although neither hypothesis fully explains all experimental data, majority of the experimental data are compatible with the protein network hypothesis. The key point of this hypothesis is that the spectrin-actin network anchors to the erythrocyte membrane via rigid AE1 [1,2,3,41]. Wong proposed a dynamic role for AE1 in erythrocyte shape control [42]. It was speculated that two active conformations of AE1, inward-facing and outward-facing, each contracted or relaxed the membrane cytoskeleton by folding and unfolding spectrin, thereby contributing to the erythrocyte shape changes. This speculation has never been confirmed experimentally. Our data suggest that AE1 can participate in mediating erythrocyte shape flexibility via a novel pivot mechanism involving flexible connectors between the membrane and cytoplasmic domains of AE1 (Fig. 5c). This mechanism differs from the one proposed by Wong [42], and is supported by the observation that the natural mutation in the proposed connector area of AE1 in SAO patients increases erythrocyte rigidity [2,18].

An earlier study of full-length AE1 by negative staining EM showed different detergents induced different oligomers of AE1,

but did not show a 3D structure with distinguishable domains [22]. Our results provide novel information regarding the overall structure of AE1 and provide unprecedented details about the domain organization of a full-length bicarbonate transporter in the SLC4 family. Our structure shows that the cytoplasmic and membrane domains do not occupy stable positions in the protein but instead can move relative to each other. These movements are possible, likely because the connector region is mainly coiled [15]. Our results, when combined with biochemical and crystallography data, secondary structure and topology prediction analyses, and the location of the natural mutations in AE1 affecting the erythrocyte shape control, suggest that the connector region contains approximately 50 amino acid residues [1,2,14,23].

Mohandas and colleagues proposed that the SAO deletion in AE1 induces a conformational change in the cytoplasmic domain, and this change, in turn, leads to a marked increase in the association of this domain with the cytoskeletal network [18]. We hypothesize that the connector region is sufficiently flexible to generate all the necessary conformations of AE1 under mechanical forces induced by erythrocyte movements through narrow capillaries. Such flexibility would also be advantageous for maintaining the integrity of membrane cytoskeleton. In SAO caused by an in frame deletion of aa. 400–408 in the proposed connector region, the erythrocytes have increased rigidity and are oval in shape suggesting that this represents an “experiment of nature” documenting the importance of the connector region in erythrocyte shape flexibility [2,18].

Two populations of AE1 in the erythrocyte membrane, involved in the cytoskeleton attachment, are currently defined: (1) AE1 tetramer bound to the membrane cytoskeleton via ankyrin, and (2) AE1 dimer linked to the membrane cytoskeleton via adducin. Recent AE1 diffusion measurements in the erythrocyte membrane estimated their near equal relative abundance [43]. Whether a similar pivot mechanism as proposed in the AE1 dimer in our study also exists in tetramers awaits future studies.

### Supporting Information

**Movie S1 Animated view of a series of front-view class averages showing tilting motions of the AE1 cytoplasmic domain relative to the membrane domain.**

(GIF)

### Acknowledgments

We thank Vahram Ornekian and Levi Clancy for initial efforts in electron tomography reconstruction of AE1.

### Author Contributions

Conceived and designed the experiments: JJ AP ZHZ IK. Performed the experiments: JJ NM KT NA IA PG AP. Analyzed the data: JJ PG AP ZHZ IK. Wrote the paper: JJ MN AP ZHZ IK.

### References

1. Pushkin A, Kurtz I (2006) SLC4 base (HCO<sub>3</sub><sup>-</sup>, CO<sub>3</sub><sup>2-</sup>) transporters: classification, function, structure, genetic diseases, and knockout models. *Am J Physiol Renal Physiol* 290: F580–599.
2. Alper SL (2009) Molecular physiology and genetics of Na<sup>+</sup>-independent SLC4 anion exchangers. *Exp Biol* 212: 1672–1683.
3. Bennett V, Stenbuck PJ (1979) The membrane attachment protein for spectrin is associated with band 3 in human erythrocyte membranes. *Nature* 280: 468–473.
4. Garcia-Romeu F, Borgese F, Guizouarn H, Fievet B, Motais R (1996) A role for the anion exchanger AE1 (band 3 protein) in cell volume regulation. *Cell Mol Biol (Noisy-le-grand)* 42: 985–994.
5. Peters LL, Shivdasani RA, Liu SC, Hanspal M, John KM, et al. (1996) Anion exchanger 1 (band 3) is required to prevent erythrocyte membrane surface loss but not to form the membrane skeleton. *Cell* 86: 917–927.
6. Anong WA, Franco T, Chu H, Weis TL, Devlin EE, et al. (2009) Adducin forms a bridge between the erythrocyte membrane and its cytoskeleton and regulates membrane cohesion. *Blood* 114: 1904–1912.
7. Arese P, Turrini F, Schwarzer E (2005) Band 3/complement-mediated recognition and removal of normally senescent and pathological human erythrocytes. *Cell Physiol Biochem* 16: 133–146.
8. Ficarra S, Tellone E, Giardina B, Scatena R, Russo A, et al. (2009) Derangement of erythrocytic AE1 in beta-thalassemia by caspase 3: pathogenic mechanisms and implications in red blood cell senescence. *J Membr Biol* 228: 43–49.
9. Drew C, Ball V, Robinson H, Clive Ellory J, Gibson JS (2004) Oxygen sensitivity of red cell membrane transporters revisited. *Bioelectrochemistry* 62: 153–158.

10. Mgone CS, Koki G, Paniu MM, Kono J, Bhatia KK, et al. (1996) Occurrence of the erythrocyte band 3 (AE1) gene deletion in relation to malaria endemicity in Papua New Guinea. *Trans R Soc Trop Med Hyg* 90: 228–231.
11. Winograd E, Eda S, Sherman IW (2004) Chemical modifications of band 3 protein affect the adhesion of *Plasmodium falciparum*-infected erythrocytes to CD36. *Mol Biochem Parasitol* 136: 243–248.
12. von Kalckreuth V, Evans JA, Timmann C, Kuhn D, Agbenyega T, et al. (2006) Promoter polymorphism of the anion-exchange protein 1 associated with severe malarial anemia and fatality. *J Infect Dis* 194: 949–957.
13. Crandall IE, Szarek WA, Vlahakis JZ, Xu Y, Vohra R, et al. (2007) Sulfated cyclodextrins inhibit the entry of *Plasmodium* into red blood cells. Implications for malarial therapy. *Biochem Pharmacol* 73: 632–642.
14. Zhang D, Kiyatkin A, Bolin JT, Low PS (2000) Crystallographic structure and functional interpretation of the cytoplasmic domain of erythrocyte membrane band 3. *Blood* 96: 2925–2933.
15. Mohandas N, Gallagher PG (2008) Red cell membrane: past, present, and future. *Blood* 112: 3939–3948.
16. Alberts B, Lewis J, Roberts K, Walter P, Baff M (2008) Molecular biology of the cell. *Molecular Biology of the Cell*. 5th Ed. Garland Science Publishing, New York, NY.
17. Butler J, Mohandas N, Waugh RE (2008) Integral protein linkage and the bilayer-skeletal separation energy in red blood cells. *Biophys J* 95: 1826–1836.
18. Mohandas N, Winardi R, Knowles D, Leung A, Parra M, et al. (1992) Molecular basis for membrane rigidity of hereditary ovalocytosis. A novel mechanism involving the cytoplasmic domain of band 3. *J Clin Invest* 89: 686–692.
19. Wang DN, Kuhlbrandt W, Sarabia VE, Reithmeier RA (1993) Two-dimensional structure of the membrane domain of human band 3, the anion transport protein of the erythrocyte membrane. *Embo J* 12: 2233–2239.
20. Wang DN, Sarabia VE, Reithmeier RA, Kuhlbrandt W (1994) Three-dimensional map of the dimeric membrane domain of the human erythrocyte anion exchanger, Band 3. *Embo J* 13: 3230–3235.
21. Lemieux MJ, Reithmeier RA, Wang DN (2002) Importance of detergent and phospholipid in the crystallization of the human erythrocyte anion-exchanger membrane domain. *J Struct Biol* 137: 322–332.
22. Dolder M, Walz T, Hefli A, Engel A (1993) Human erythrocyte band 3. Solubilization and reconstitution into two-dimensional crystals. *J Mol Biol* 231: 119–132.
23. Yamaguchi T, Ikeda Y, Abe Y, Kuma H, Kang D, et al. (2010) Structure of the membrane domain of human erythrocyte anion exchanger 1 revealed by electron crystallography. *J Mol Biol* 397: 179–189.
24. Kang D, Okubo K, Hamasaki N, Kuroda N, Shiraki H (1992) A structural study of the membrane domain of band 3 by tryptic digestion. Conformational change of band 3 in situ induced by alkali treatment. *J Biol Chem* 267: 19211–19217.
25. Ito D, Koshino I, Arashiki N, Adachi H, Tomihari M, et al. (2006) Ubiquitylation-independent ER-associated degradation of an AE1 mutant associated with dominant hereditary spherocytosis in cattle. *J Cell Sci* 119: 3602–3612.
26. Casey JR, Reithmeier RA (1991) Analysis of the oligomeric state of Band 3, the anion transport protein of the human erythrocyte membrane, by size exclusion high performance liquid chromatography. Oligomeric stability and origin of heterogeneity. *J Biol Chem* 266: 15726–15737.
27. Colfen H, Harding SE, Boulter JM, Watts A (1996) Hydrodynamic examination of the dimeric cytoplasmic domain of the human erythrocyte anion transporter, band 3. *Biophys J* 71: 1611–1615.
28. Abuladze N, Azimov R, Newman D, Sassani P, Liu W, et al. (2005) Critical amino acid residues involved in the electrogenic sodium-bicarbonate cotransporter kNBC1-mediated transport. *J Physiol* 565: 717–730.
29. Suloway C, Pulokas J, Fellmann D, Cheng A, Guerra F, et al. (2005) Automated molecular microscopy: the new Legimon system. *J Struct Biol* 151: 41–60.
30. Suloway C, Shi J, Cheng A, Pulokas J, Carragher B, et al. (2009) Fully automated, sequential tilt-series acquisition with Legimon. *J Struct Biol* 167: 11–18.
31. Mindell JA, Grigorieff N (2003) Accurate determination of local defocus and specimen tilt in electron microscopy. *J Struct Biol* 142: 334–347.
32. Lander GC, Stagg SM, Voss NR, Cheng A, Fellmann D, et al. (2009) Appion: an integrated, database-driven pipeline to facilitate EM image processing. *J Struct Biol* 166: 95–102.
33. Voss NR, Yoshioka CK, Radermacher M, Potter CS, Carragher B (2009) DoG Picker and TiltPicker: software tools to facilitate particle selection in single particle electron microscopy. *J Struct Biol* 166: 205–213.
34. Frank J, Radermacher M, Penczek P, Zhu J, Li Y, et al. (1996) SPIDER and WEB: processing and visualization of images in 3D electron microscopy and related fields. *J Struct Biol* 116: 190–199.
35. Ludtke SJ, Baldwin PR, Chiu W (1999) EMAN: semiautomated software for high-resolution single-particle reconstructions. *J Struct Biol* 128: 82–97.
36. Pettersen EF, Goddard TD, Huang CC, Couch GS, Greenblatt DM, et al. (2004) UCSF Chimera—a visualization system for exploratory research and analysis. *J Comput Chem* 25: 1605–1612.
37. Leschziner AE, Nogales E (2006) The orthogonal tilt reconstruction method: an approach to generating single-class volumes with no missing cone for ab initio reconstruction of asymmetric particles. *J Struct Biol* 153: 284–299.
38. Ohi M, Li Y, Cheng Y, Walz T (2004) Negative Staining and Image Classification - Powerful Tools in Modern Electron Microscopy. *Biol Proced Online* 6: 23–34.
39. Zhou Z, DeSensi SC, Stein RA, Brandon S, Dixit M, et al. (2005) Solution structure of the cytoplasmic domain of erythrocyte membrane band 3 determined by site-directed spin labeling. *Biochemistry* 44: 15115–15128.
40. Sheetz MP (1983) Membrane skeletal dynamics: role in modulation of red cell deformability, mobility of transmembrane proteins, and shape. *Semin Hematol* 20: 175–188.
41. Nakao M (2002) New insights into regulation of erythrocyte shape. *Curr Opin Hematol* 9: 127–132.
42. Wong P (1994) Mechanism of control of erythrocyte shape: a possible relationship to band 3. *J Theor Biol* 171: 197–205.
43. Kodippili GC, Spector J, Hale J, Giger K, Hughes MR, et al. (2012) Analysis of the mobilities of band 3 populations associated with ankyrin protein and junctional complexes in intact murine erythrocytes. *J Biol Chem* 287: 4129–4138.