

UCLA
Contemporary Music Score Collection

Title

Morsel

Permalink

<https://escholarship.org/uc/item/6vs8d7pb>

Author

Fitzpatrick, Luke

Publication Date

2020

MUSIC & TEXT
MORSEL (2019) BY LUKE FITZPATRICK

FOR VIOLIN, CELLO, PIANO & INTONING VOICE
WRITTEN & DEDICATED TO THE MORSEL TRIO
FOR THEIR MARCH 8TH, 2019TH PERFORMANCE

MUSIC & TEXT
MORSEL BY LUKE FITZPATRICK, TEXT BY LUKE FITZPATRICK
INSTRUCTIONS

FOR THE VIOLIN: ALL SECTIONS OF MORSEL SHOULD BE PLAYED BETWEEN THE KNEES IN THE STYLE OF HARRY PARTCH'S ADAPTED VIOLA EXCEPT FOR SECTION [B], WHICH IS PLAYED CONVENTIONALLY INTO THE PIANO.

FOR THE PIANO: THE SUSTAINED PEDAL SHOULD BE DEPRESSED FOR THE ENTIRE PIECE USING A BRICK OR HEAVY OBJECT.

INTONING VOICE: THE INTONING VOICE PART SHOULD BE PERFORMED BY THE VIOLINIST, CELLIST OR PIANIST. IT ALSO MAY BE SPLIT BETWEEN THEM AS WELL.

© 2019 BY LUKE FITZPATRICK

MORSEL BY LUKE FITZPATRICK

A & E

VIOLIN (BETWEEN KNEES)

CELLO

PIANO

= (PEDAL DOWN ENTIRE PIECE)

VIOLIN

CELLO

PIANO

=

VIOLIN

CELLO

PIANO

=

(HUM PITCH)

(HUM PITCH)

(HUM PITCH FROM TAP)

(PIZZ STRINGS INSIDE PIANO)

8va # + b+

(LET ALL SOUND DIE WITH PIANO RESONANCE)

(HUM PITCH)

(HUM PITCH)

(HUM PITCH FROM TAP)

(PIZZ STRINGS INSIDE PIANO)

8va b+ b+

(LET ALL SOUND DIE WITH PIANO RESONANCE)

(HUM PITCH)

(HUM PITCH)

(HUM PITCH FROM TAP)

(PIZZ STRINGS INSIDE PIANO)

8va # + b+

(LET ALL SOUND DIE WITH PIANO RESONANCE)

STRUM STRINGS FROM LOWEST STRING TO 2ND CROSSBAR

STRUM STRINGS FROM LOWEST STRING TO 2ND CROSSBAR

STRUM STRINGS FROM LOWEST STRING TO 2ND CROSSBAR

3

1

VIOLIN (PLAYED CONVENTIONALLY)

(PLAYED INTO THE PIANO)

LISTEN TO RESONANCE

LISTEN TO RESONANCE

LISTEN TO RESONANCE

CELLO

PIANO

TAP INSIDE

TAP STRING INSIDE PIANO WITH METAL

1 TRANSITION TO 2 2 TRANSITION TO 3

2

VIOLIN

IMPROVISE IN THE STYLE OF 1

REPEAT 1

CELLO

IMPROVISE IN THE STYLE OF THE VIOLIN MORSELS OF 1

TRANSITION BACK TO 1

PIANO

TAP INSIDE

TAP STRING INSIDE WITH METAL

TRANSITION BACK TO 1

3

PIANO

TAP INSIDE

TAP STRING INSIDE PIANO WITH METAL

TAP INSIDE

TAP STRING INSIDE PIANO WITH METAL

TAP INSIDE

TAP STRING INSIDE PIANO WITH METAL



C

2ND PARTIAL F STRING

OPEN A STRING

2ND PARTIAL F STRING

OPEN A STRING

VIOLIN
(BETWEEN KNEES)

2ND PARTIAL D STRING

2ND PARTIAL D STRING

OPEN G STRING

OPEN A STRING

2ND PARTIAL D STRING

2ND PARTIAL D STRING

CELLO OPEN G STRING

2ND PARTIAL C STRING

OPEN G STRING

2ND PARTIAL C STRING

LOW GLISS

LOW GLISS

LOW GLISS

LOW GLISS

F#, A#, Ab
(ANY OCTAVE)

Ab, A#, G
(ANY OCTAVE)

F#, F#
(HIGHEST OCTAVE)

G, A#, Ab
(ANY OCTAVE)

Ab, A#, F#
(ANY OCTAVE)

(KEYS
CONVENTIONALLY
PLAYED)

D

INTONING VOICE

PIANO

TAP INSIDE ONCE

FF

(FREE) THE TOMB

(PIZZ INSIDE)
(SLOW)



TAP INSIDE ONCE

P

INTONING VOICE

VIOLIN

CELLO

PIANO

PIANO

ENTER THROUGH THE NIGHT	DARKNESS SETS IN	TEAR LONG A PART	THE LIGHT
<p>Violin: $\frac{7}{5}$ - $\frac{4}{3}$ - $\frac{7}{5}$ (C#) 4 (C#) 7 (C#)</p> <p>Cello: $\frac{7}{5}$ (C#) 4 (C#) 7 (C#)</p> <p>Piano: Pizz lowest string</p>	<p>Violin: $\frac{9}{7}$ $\frac{5}{4}$ $\frac{11}{9}$ (B#) 5 (B#) 11 (B#)</p> <p>Cello: $\frac{9}{7}$ (B#) 5 (B#) 11 (B#)</p> <p>Piano: Pizz lowest string</p>	<p>Violin: $\frac{7}{5}$ $\frac{10}{7}$ $\frac{16}{11}$ (A) 8 (A) 14 (A) 3/2</p> <p>Cello: $\frac{7}{5}$ (C#) 10 (C#) 16 (C#) 14 (E#) 3 (D#)</p> <p>Piano: Pizz lowest string</p>	<p>Violin: 12 (A) 11 (A) 9 (A) 6 (Bb) 7 (Bb)</p> <p>Cello: 12 (A) 11 (A) 9 (A) 6 (Bb) 7 (Bb)</p> <p>Piano: Pizz lowest string</p>

4 ENTER THROUGH THE NIGHT

INTONING VOICE

THE DARKNESS FORMS A PATTERN

FEAR BEGINS TO TAKE SHAPE!

VIOLIN

men II

Sul A 3 3 3 2 (G#) 1/1 (G#)

Sul D 2 4 3 (C#) 9 (C#)

CELO

men

Sul C 3 3 (G#) 1/1 (G#)

Sul C 3 2

PIZZ LOWEST STRING

FF

TAP INSIDE

THE DARKNESS FORMS A PATTERN

7/5 10/7 16/11 3/2 14/9 9/5

2 7 10 (C#) 16 (C#) 3 (D#) 14 (C#) 9 (F#)

5 7 11 2 9 5

11 (F#) 15 (F#) 4 (F#) 16 (F#) 1 (G#) 7 (Bb)

6 8 21 8 1 6

7 (C#) 10 (C#) 16 (C#) 3 (D#) 14 (F#) 9 (F#)

5 7 11 2 9 5

PIZZ LOWEST STRING

FF

TAP INSIDE

FEAR BEGINS TO TAKE SHAPE!

D 7 b b b

7/6 9/8 11/10 12/11 9/5

7 (Bb) 9 (A#) 11 (A#) 12 (Ab) 9 (F#)

6 8 10 11 5

3 (D#) 9 (C#) 10 (C#) 7 (C#) 7 (Bb)

2 (D#) 11 (C#) 7 5 6

7 (Bb) 9 (A#) 11 (A#) 12 (Ab) 9 (F#)

6 8 10 11 5

PIZZ LOWEST STRING

FF

TAP INSIDE

4 ENTER THROUGH THE NIGHT

INTONING VOICE

5 THE SERPENT'S FANGS STRIKE

POLSONING THE NIGHT!

VIOLIN

men I

Sul F 9 4/3 9/7

3 9 (A#) 4 (C#) 9 (B#)

8 3 7

Sul A II 2 16 12 (E#) 5 (E#)

11 (C#) 7 (C#) 16 40 (F#)

8 (C#) 5 8 21

CELO

men

Sul C 1 9 (A#) 4 (C#) 9 (B#)

8 3 7

21 (A#) 16 (A#) 3 (D#) 16 (C#)

20 15 2 11

20 15 2 11

PIZZ LOWEST STRING

FF

TAP INSIDE

THE SERPENT'S FANGS STRIKE

21 16 3/2 16/11

21 (Ab) 16 (Ad) 3 (D#) 16 (C#)

20 15 2 11

11 (C#) 7 (C#) 16 40 (F#)

8 (C#) 5 8 21

PIZZ LOWEST STRING

FF

TAP INSIDE

POLSONING THE NIGHT!

9/8 10/9

19 18 (A#)

3 10 7 (C#)

9 8 (A#)

crazy gliss & trem down

crazy gliss & trem down

crazy gliss & trem down

PIZZ LOWEST STRING

FF

TAP INSIDE

INTONING VOICE

(FREE)
CREAM COLORED MIST RISES UP

VIOLIN ^{Sul D III} 2 3 trill (no trem)
2 2 (D#)

CELLO ^{Sul C} 2 16 gliss down (no trem)
2 11 (C#)

INTONING VOICE

4

THE COURSE OF LOSS

3 1/2 4 1/3 7 1/5

VIOLIN ^{Sul A III trem} 3 9 (A#) 33 (A#) 16 (A#)
3 8 32 15

CELLO ^{Sul C II trem} 2 10 (C#) 4 (C#) 7 (C#)
2 7 3 5

PIANO ^{Pizz lowest string} F 3 TAP INSIDE

(SOFTER & SLOWER)

MUMIFIED REAINS.

3 1/2 4 1/3 7 1/5

VIOLIN ^{Sul A III trem} 3 9 (A#) 33 (A#) 16 (A#)
3 8 32 15

CELLO ^{Sul C II trem} 2 10 (C#) 4 (C#) 7 (C#)
2 7 3 5

PIANO ^{Pizz lowest string} F 3 TAP INSIDE

MORSEL BY LUKE FITZPATRICK

A & E

VIOLIN (BETWEEN KNEES)

CELLO

PIANO

= (PEDAL DOWN ENTIRE PIECE)

VIOLIN

CELLO

PIANO

VIOLIN

CELLO

PIANO

=

STRUM STRINGS FROM
LOWEST STRING TO 2ND
CROSSBAR

STRUM STRINGS FROM
LOWEST STRING TO 2ND
CROSSBAR

STRUM STRINGS FROM
LOWEST STRING TO
2ND CROSSBAR

(HUM PITCH)

(HUM PITCH FROM TAP)

(HUM PITCH)

(HUM PITCH FROM TAP)

(HUM PITCH)

(HUM PITCH FROM TAP)

(PIZZ STRINGS INSIDE PIANO)

8VA

+ b+

(LET ALL SOUND DIE WITH PIANO RESONANCE)

(PIZZ STRINGS INSIDE PIANO)

8VA

b+ b+

(LET ALL SOUND DIE WITH PIANO RESONANCE)

(PIZZ STRINGS INSIDE PIANO)

8VA

+ b+

(LET ALL SOUND DIE WITH PIANO RESONANCE)

CODA

VIOLIN

HUM FROM STRUM;
DECAY WITH PIANO

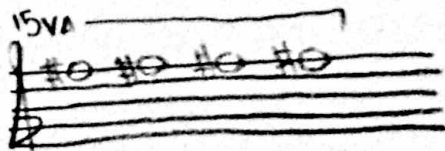
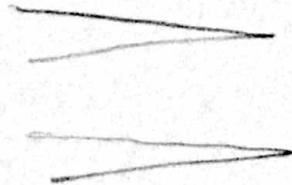
CELLO

HUM FROM STRUM;
DECAY WITH PIANO

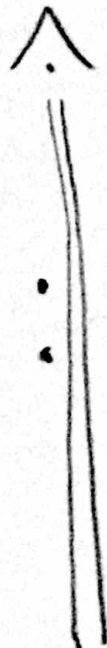
PIANO

STRUM LOW → HIGH → LOW
BETWEEN MIDDLE CROSSBAR

=



KEYS PLAYED CONVENTIONALLY



2019
LF