

# UCLA

## UCLA Previously Published Works

### Title

Histological Subtypes and Response to PD-1/PD-L1 Blockade in Advanced Urothelial Cancer: A Retrospective Study.

### Permalink

<https://escholarship.org/uc/item/6wb4z19b>

### Journal

Investigative urology, 204(1)

### Authors

Miller, Natalie

Khaki, Ali

Diamantopoulos, Leonidas

et al.

### Publication Date

2020-07-01

### DOI

10.1097/JU.0000000000000761

Peer reviewed



Published in final edited form as:

*J Urol.* 2020 July ; 204(1): 63–70. doi:10.1097/JU.0000000000000761.

## Histologic Subtypes and Response to PD-1/PD-L1 Blockade in Advanced Urothelial Cancer: A Retrospective Study

Corresponding author: Petros Grivas, MD PhD, Associate Professor, Clinical Director of Genitourinary Cancers Program, University of Washington, Associate Member, Clinical Research Division, Fred Hutchinson Cancer Research Center, Seattle Cancer Care Alliance, Tel: 206-606-1943, Fax: 206-606-2042, pgrivas@uw.edu.

\*co-first author

Author Contributions statement:

NJ Miller, AR Khaki and P Grivas designed this study.

AR Khaki, LN Diamantopoulos, MM Bilen, V Santos, J Esther, R Morales, M Devitt, A Nelson, E Shreck, H Assi, A Rodriguez-Vida, M Lythgoe, A Drakaki, M Joshi, P Isaacsson Velho, S Liu, LA Buznego, M Moses, J Jain, J Murgic, and P Barata participated in data collection.

AR Khaki and NJ Miller performed statistical analysis.

NJ Miller wrote initial manuscript draft with contributions from AR Khaki and P Grivas

All authors reviewed critically and provided revisions and agreed in the submitted draft.

Disclosures

Dr. M.A. Bilen has a consulting/advisory role with Exelixis, Nektar, Genomichealth, EMD/Serono, and Sanofi and receives research funding from Xencor, Bayer, Bristol-Myers Squibb, Seattle Genetics, Genentech/Roche, Incyte, Nektar, AstraZeneca, Tricon Pharmaceuticals, Peleton, and Pfizer.

Dr. R Morales-Barrera has served in a consulting or advisory and/or speakers bureaus for Sanofi Aventis, Bayer, Janssen, AstraZeneca, Merck Sharp & Dohme, Asofarma; and received travel and accommodations expenses from Roche, Sanofi Aventis, Astellas, Janssen, Merck Sharp & Dohme, Bayer, Pharmacyclics, Clovis Oncology and Lilly.

Dr. M Devitt: advisory role for Bayer

Dr. A Sankin: advisory role for Genentech and Photocure

Dr A. Rodriguez-Vida: advisory role for MSD, Pfizer, BMS, Astellas, Janssen, Bayer, and Roche; receiving lectures fees from Pfizer, MSD, Astellas, BMS, Janssen, Astra Zeneca, Roche, Bayer, and Sanofi Aventis; and receiving research funding from Takeda, Pfizer, and MSD.

Dr. D.J. Pinato: received lecture fees from ViiV Healthcare, Bayer. Advisory role for Mina Therapeutics. Receiving research funding to institution from MSD, BMS.

Dr. A Drakaki: advisory role for BMS, AstraZeneca, Radmetrics and KYNAN Therapeutics; travel/accommodation from Lilly; and research funding from Kite/Gilead.

Dr. M Joshi: Advisory board for Sanofi; and institutional research funds from Pfizer and AstraZeneca

Dr. S Liu: Honorarium from Merck and Exelixis

Dr. A Tripathi: advisory role for Foundation Medicine; and receiving research funding to institution from EMD Serono, Bayer, Clovis Oncology, Aravive Inc., WindMIL therapeutics, Corvus Pharmaceuticals

Dr. Y Zakharia: Advisory Board: Amgen, Roche Diagnostics, Novartis, Jansen, Eisai, Exelixis, Castle Bioscience, Array, Bayer, Pfizer; Grant/research support from: Institution clinical trial support from NewLink Genetics, Pfizer, Exelixis, Eisai. DSMC: Jansen

Dr. I Duran: Advisory board for Roche, BMS, MSD, Pharmacyclics, Jansen, Ipsen and Novartis. Honoraria from Roche, BMS, MSD, Jansen, Ipsen, Novartis, Astellas. Travel funding from Ipsen and Astra-Zeneca. Institutional research funding from Astra-Zeneca and Roche.

Dr. Pedro Barata: Advisory board for BMS, Pfizer, Eisai, Astra Zeneca, Caris. Institutional research funding from Blue Earth Diagnostics, Genomic Health.

Dr. M Galsky: Advisory board for BioMotiv, Janssen, Dendreon, Merck, GlaxoSmithKline, Astella, Genentech, BMS, Novartis, Pfizer, EMD Serono, AZ, Seattle Genetics, Incyte, Aileron, Dracen, Inovio, NuMab, Dragonfly Therapeutics; contracted research for Janssen, Dendreon, Novartis BMS, Merck, Astra Zeneca, Genetech; ownership interest in Rappta Therapeutics

Dr. G Sonpavde: Advisory board for BMS, Exelixis, Bayer, Sanofi, Pfizer, Novartis, Eisai, Janssen, Amgen, Astrazeneca, Merck, Genentech, EMD Serono, Astellas, Seattle Genetics; Research support to institution from Astrazeneca, Bayer, Amgen, Boehringer-Ingelheim, Janssen, Merck, Sanofi, Pfizer; Author for Uptodate; Steering committee for Astrazeneca, BMS, Astellas, Debiopharm, Bavarian Nordic; Speaker for Onclive; Research to Practice; Physician Education Resource (PER)

Dr. E Yu (in last 3 years)

Consulting: Amgen, Astrazeneca, Bayer, Churchill, Clovis, Dendreon, EMD Serono, Incyte, Janssen, Merck, Pharmacyclics, QED, Seattle Genetics, Tolmar; Research Support to Institution from Bayer, Daiichi-Sankyo, Dendreon, Merck, Seattle Genetics

Dr. G Lyman: G1 Therapeutics, Halozyme, Partners Healthcare, Amgen, Pfizer, Agendia, Helsinn Therapeutics, Celldex (I), Janssen Pharmaceuticals (I), Genomic Health, Mylan, Samsung Bioepis, Spectrum Pharmaceuticals.

Dr. P Grivas (all unrelated in the last 3 years):

Consulting: AstraZeneca; Bayer; Bioccept; Bristol-Myers Squibb; Clovis Oncology; Dendreon; Driver; EMD Serono; Exelixis; Foundation Medicine; Genentech; Genzyme; GlaxoSmithKline, Heron Therapeutics; Janssen; Merck & Co.; Mirati Therapeutics; Pfizer; Roche; Seattle Genetics; QED Therapeutics

Educational Program: (not current; with direct input in content): Bristol-Myers Squibb; Genentech

Research Funding to Institution: AstraZeneca, Bayer; Genentech/Roche; Merck & Co.; Mirati Therapeutics; Oncogenex; Pfizer, Clovis Oncology, Bavarian Nordic, Immunomedics, Debiopharm, Bristol-Myers Squibb

**Natalie J Miller, MD PhD<sup>1,\*</sup>, Ali Raza Khaki, MD<sup>1,\*</sup>, Leonidas N Diamantopoulos, MD<sup>1</sup>, Mehmet A Bilen, MD<sup>2</sup>, Victor Santos, MD<sup>3</sup>, Neeraj Agarwal, MD<sup>3</sup>, Rafael Morales-Barrera, MD<sup>4</sup>, Michael Devitt, MD<sup>5</sup>, Ariel Nelson, MD<sup>6</sup>, Christopher J Hoimes, DO<sup>6</sup>, Evan Shreck, MD<sup>7</sup>, Hussein Assi, MD<sup>8</sup>, Benjamin A Gartrell, MD<sup>7</sup>, Alex Sankin, MD<sup>7</sup>, Alejo Rodriguez-Vida, MD PhD<sup>9</sup>, Mark Lythgoe, MBBS<sup>10</sup>, David J Pinato, MD<sup>10</sup>, Alexandra Drakaki, MD PhD<sup>11</sup>, Monika Joshi, MD<sup>12</sup>, Pedro Isaacsson Velho, MD<sup>13</sup>, Noah Hahn, MD<sup>13</sup>, Sandy Liu, MD<sup>11</sup>, Lucia Alonso Buznego, MD<sup>14</sup>, Ignacio Duran, MD<sup>14</sup>, Marcus Moses, MS<sup>15</sup>, Jayanshu Jain, MD<sup>16</sup>, Jure Murgic, MD PhD<sup>17</sup>, Pedro Barata, MD MSc<sup>15</sup>, Abhishek Tripathi, MD<sup>8</sup>, Yousef Zakharia, MD<sup>18</sup>, Matthew D Galsky, MD<sup>19</sup>, Guru Sonpavde, MD<sup>20</sup>, Evan Y Yu, MD<sup>1</sup>, Gary H Lyman, MD MPH<sup>1,21</sup>, Petros Grivas, MD PhD<sup>1</sup>**

<sup>1</sup>Division of Oncology, Department of Medicine, University of Washington, Seattle, WA, USA

<sup>2</sup>Winship Cancer Institute of Emory University, Atlanta, GA, USA

<sup>3</sup>Department of Medicine, University of Utah, Salt Lake City, UT, USA

<sup>4</sup>Vall d'Hebron Institute of Oncology, Vall d'Hebron University Hospital, Universitat Autònoma de Barcelona, Barcelona, Spain

<sup>5</sup>Division of Hematology/Oncology, Department of Medicine, University of Virginia School of Medicine, Charlottesville, VA

<sup>6</sup>Division of Hematology/Oncology, Department of Medicine, Case Comprehensive Cancer Center, Cleveland, OH, USA

<sup>7</sup>Departments of Medical Oncology and Urology, Montefiore Medical Center, Bronx, NY, USA

<sup>8</sup>Stephenson Cancer Center, University of Oklahoma Health Sciences Center, Oklahoma City, OK, USA

<sup>9</sup>Medical Oncology Department, Hospital del Mar Research Institute, Barcelona, Spain

<sup>10</sup>Division of Medicine, Imperial College London, London, UK

<sup>11</sup>Division of Hematology/Oncology, David Geffen School of Medicine at UCLA, Los Angeles, CA, USA

<sup>12</sup>Division of Hematology/Oncology, Department of Medicine, Penn State Cancer Institute, Hershey, PA, USA

<sup>13</sup>Department of Oncology, Sidney Kimmel Comprehensive Cancer Center, Baltimore, MD, USA

<sup>14</sup>Hospital Universitario Marques de Valdecilla. IDIVAL. Santander, Spain

<sup>15</sup>Department of Medicine and Oncology, Tulane University, New Orleans, LA, USA

<sup>16</sup>Department of Medicine, University of Iowa, Iowa City, IA, USA

<sup>17</sup>Department of Oncology and Nuclear Medicine, University Hospital Center Sisters of Charity Zagreb School of Medicine, Zagreb, Croatia

<sup>18</sup>Division of Oncology, Department of Medicine, University of Iowa, Iowa City, IA, USA

<sup>19</sup>Division of Oncology, Department of Medicine, Icahn School of Medicine at Mount Sinai, New York, NY, USA

<sup>20</sup>Genitourinary Oncology Program, Dana-Farber Cancer Institute, Harvard Medical School, Boston, MA, USA

<sup>21</sup>Public Health Sciences Division, Fred Hutchinson Cancer Research Center, Seattle, WA, USA

## Abstract

**Purpose:** Urinary tract cancer can be pure urothelial carcinoma (PUC), pure non-UC, or variant UC (VUC, defined here as mixed UC). Little is known regarding outcomes for patients with VUC receiving immune checkpoint inhibitors (ICI). We hypothesized that VUC does not compromise ICI efficacy in patients with advanced (a)UC.

**Materials and Methods:** We performed a retrospective cohort study across 18 institutions. Demographic, clinicopathologic, treatment and outcomes data were collected for patients with aUC who received ICI. Patients were divided into PUC vs. VUC; VUC further divided by type of variant (i.e. squamous, neuroendocrine, etc). We compared overall response rate (ORR) using univariate and multivariate logistic regression and progression free survival (PFS) and overall survival (OS) using Kaplan-Meier and univariate and multivariate Cox proportional hazards.

**Results:** 519 patients were identified; 395, 406 and 403 included in ORR, OS and PFS analyses, respectively. ORR to ICI between patients with PUC and VUC was comparable (28% vs. 29%,  $p=0.90$ ) without significant differences for individual subtypes vs. PUC. Median OS for patients with PUC was 11.0 months vs. 10.1 months for VUC ( $p=0.60$ ), but only 4.6 months for patients with neuroendocrine (NE) features ( $n=9$ ;  $HR=2.75$  [95% CI 1.40-5.40] vs. PUC;  $p=0.003$ ). Median PFS was 4.1 months for PUC vs. 5.2 months for VUC ( $p=0.43$ ) and 3.7 months for NE ( $HR=1.87$  [95% CI 0.92-3.79] vs. PUC,  $p=0.09$ ).

**Conclusions:** ORR to ICI was comparable across histologic types. However, OS was worse for patients with tumors containing NE features. VUC should not exclude patients from receiving ICI.

## Keywords

Bladder Cancer; urothelial carcinoma; variant urothelial carcinoma; transitional cell; immunotherapy; neuroendocrine bladder cancer

## Introduction:

Bladder cancer is an aggressive malignancy, with approximately 165,000 worldwide deaths annually<sup>1</sup>. Most bladder tumors demonstrate pure urothelial carcinoma (PUC) histology, but there is an increasingly recognized fraction of “urothelial carcinoma (UC) with divergent differentiation”<sup>2</sup> or variant urothelial carcinoma (VUC), which has been documented in 33% of cystectomy<sup>2</sup> and 25% of TURBT<sup>3</sup> specimens. The most common subtypes of VUC are UC with squamous cell features, ~20%, and UC with glandular features, 16-18%<sup>2</sup>. VUC can be more aggressive; VUC with squamous differentiation has been shown to present at higher stage<sup>4</sup> with increased recurrence rate after radical cystectomy<sup>5-6</sup>; while rarer variants, such as plasmacytoid and sarcomatoid are thought to carry the poorest prognosis<sup>7</sup>.

Conflicting reports exist regarding the responsiveness of VUC to conventional therapies; one study of patients with advanced UC treated with systemic chemotherapy found significantly

shorter OS and PFS for patients with VUC compared to PUC<sup>4</sup>. In addition, UC with squamous cell differentiation has had reduced response to radiotherapy<sup>8</sup>. However, larger studies have shown that UC with squamous and/or glandular features has comparable pathologic response to PUC after neoadjuvant cisplatin-based chemotherapy<sup>9</sup>, and that VUC treated with tri-modality bladder-sparing therapy (including chemotherapy/radiation) has similar response rates, overall survival (OS), and disease-specific survival to PUC<sup>10</sup>. Conversely, tumors with neuroendocrine (NE) features often present at more advanced stage with overall poor prognosis<sup>11</sup>.

Immune checkpoint inhibitor therapies (ICI) have changed UC treatment, with 13-29% of patients with locally advanced (unresectable) or metastatic UC (both defined as aUC in this study) experiencing durable responses to anti-PD-(L)1 agents<sup>12-14</sup>. While patients with minority components of variant histology were included in ICI clinical trials, there is no data regarding the overall response rate (ORR) of tumors with variant histology, especially when urothelial is not the dominant histologic type. A trial found that patients with mixed histology had higher OS after receiving pembrolizumab than patients with UC (HR 0.58 vs 0.80 vs. chemotherapy<sup>15</sup>. Limited case studies of ICI in VUC illustrate that striking responses are possible<sup>16-18</sup>. We investigated treatment outcomes of VUC to ICI in a multi-institution retrospective cohort of 519 patients with aUC treated with ICI. We hypothesized that outcomes after ICI initiation would not be significantly different in patients with tumors harboring individual histology variants compared to those with PUC.

## Materials and Methods:

### Patients and Data Collection:

After IRB-approval, data was obtained from 18 institutions to build a database of patients who received anti-PD-1 or PD-L1 for aUC. Patients initiated treatment with ICI between May 2013 and May 2019. The number of patients derived from each institution for response and survival analyses can be found in Supplemental Table 1. Each institution identified patients using provider-driven and electronic health record search algorithms. Variables included demographics, clinicopathologic, laboratory, treatment response and clinical outcomes. Data was collected using secure, web-based, standardized REDCap electronic data capture tools hosted at the Institute of Translational Health Sciences<sup>19</sup>. Patients were excluded if ICI was given for alternate diagnosis, in (neo)adjuvant setting, in combination with chemotherapy, as part of a clinical trial, or if they received >1 anti-PD-(L)1 agent (Figure 1).

Patients underwent standard of care imaging as per treating provider. Evaluation of best response was determined by the data collector based on radiographic studies and clinic notes and did not include formal central radiology review. Progression was defined as clinical or radiologic progression based on investigator review of clinical notes and radiographic study reports. Overall response rate (ORR) was calculated as the sum of patients with complete or partial response among all patients in the analytical cohort. Overall survival (OS) was defined as the time from first ICI dose to death from any cause; alive patients were censored at date of last follow-up. Progression free survival (PFS) was defined as the time interval from first ICI dose to the date of progression or death, whichever occurred earlier. Patients

who were alive and without disease progression or lost to follow-up were censored at the time of last follow-up (Figure 1).

### Histology definitions

Investigators reported histology based on pathology report without central pathology review. Patients were classified as PUC or VUC (UC plus 1 variant histologic subtype; tumors with two or more variant histologies were a minority n= 13 in ORR analysis and n= 12 in survival analysis). For subsequent analysis, PUC was compared to each variant subtype individually (i.e., squamous). Variant histologic subtypes included squamous, micropapillary, sarcomatoid, adenocarcinoma, plasmacytoid, NE/small cell, nested and 'other'. A subset of VUC excluding NE features was used for comparison to NE VUC.

### Statistical Analysis

Baseline characteristics were summarized with descriptive statistics. Categorical and continuous variables were compared with chi-squared and two-sample t-tests, respectively. Associations between tumor histology subtype (PUC vs. VUC; PUC vs. individual variant) and ORR were assessed using univariate and multivariate logistic regression. OS and PFS were estimated using the Kaplan-Meier method. Between-group differences in OS and PFS were determined via univariate and multivariate Cox regression. Multivariate logistic regression and Cox regression was performed utilizing two models, one derived from covariates with  $p < 0.1$  on univariate analysis and a second based on Bellmunt risk factors<sup>20</sup>. Covariates tested included age, sex, race (white vs. other), smoking history, ICI treatment line (first line vs subsequent), history of extirpative surgery, and hemoglobin, albumin, liver metastases and ECOG performance status at ICI initiation (Table 1). Statistical analysis was performed with STATA 16.0 (College Station, Texas). Alpha level was set to 0.05 for all analyses.

### Results:

Data on 519 consecutive patients across 18 institutions was collected. After exclusions (Figure 1), 406 patients were included in OS analysis; 70% had PUC and 30% had VUC. Baseline characteristics of patients by histological subtype, including known prognostic features<sup>20-21</sup>, are in Table 1. There were no significant differences among characteristics between PUC vs. VUC. Patients with tumors containing NE features (n=9) had significantly different distribution of Bellmunt risk factors ( $p=0.03$ ).

A total of 395 patients were included in the ORR analysis; 70% with PUC and 30% with VUC. ORR was not significantly different between PUC vs. VUC (28% vs. 29%, OR 1.03, 95% confidence interval [CI] 0.64-1.66,  $p=0.90$ ) nor among patients with any individual histologic variant (Table 2A). Notably, ORR of patients whose tumors contained NE features was 25%, not significantly different than those with PUC ( $p=0.83$ ). There was no significant difference between the ORR of PUC vs. VUC when patients were stratified by receiving ICI as first line (n=199,  $p=0.46$ ) vs. subsequent therapy (n=196,  $p=0.36$ , Table 2B), nor when patients were stratified by primary tumor in upper ( $p=0.22$ ) or lower tract ( $p=0.47$ , Table 2B). Two multivariate models were used, adjusting for 1) age, Hgb, and albumin, or 2)

Bellmunt risk factors. There were no significant differences between ORR for PUC vs. VUC or between any individual histology type (including NE) compared to PUC with either model (Table 2C).

A total of 406 patients were included in the OS analysis with a median follow-up of 7.5 months. Patients with PUC had median OS of 11.0 months (95% CI 8.8-13.4); those with VUC had median OS of 10.1 months (95% CI 6.8-15.5). OS was not significantly different between PUC and VUC (HR 1.07, 95% CI 0.82-1.41,  $p=0.60$ , Table 3A). All individual variants had similar OS compared to PUC except for NE. Patients with NE features ( $n=9$ ) had significantly shorter median OS of 4.6 months (95% CI 0.2-11.8) compared to PUC (HR 2.75, 95% CI 1.40-5.40,  $p=0.003$ ) and compared to VUC without NE features (HR 2.65, 95% CI 1.30-5.37,  $p=0.007$ ) on univariate analysis (Table 3A, Figure 2). Similar to ORR, there was no significant OS difference between PUC and VUC among patients receiving ICI as first line ( $n=211$ ,  $p=0.30$ ) vs. subsequent therapy ( $n=195$ ,  $p=0.81$ , Table 3B). However, when stratifying by primary site, patients with upper tract VUC had poorer OS vs. PUC ( $p=0.03$ ), while there was no difference in OS among lower tract tumors between histology subtypes ( $p=0.7$ , Table 3B). Two multivariate models were used, adjusting for 1) Hgb, albumin, ECOG PS 0-3 and presence of liver metastases, or 2) Bellmunt risk factors. There was no significant difference in OS between PUC and VUC with either model ( $p=0.62$  and  $p=0.41$ , Table 3C). However, patients with NE features continued to exhibit shorter OS compared to PUC in both multivariate analyses (HR 2.11, 95% CI 1.06-4.19,  $p=0.03$  in model 1; HR 3.76, 95% CI 1.36-5.59,  $p=0.005$  in model 2, Table 3C).

A total of 403 patients were included in the PFS analysis with a median follow-up of 3.5 months. PFS for PUC was not significantly different compared to VUC (HR 0.90, 95% CI 0.70-1.17,  $p=0.43$ ). Conversely, PFS was significantly worse for NE vs. VUC without NE (HR 2.24, 95% CI 1.07-4.69,  $p=0.03$ , Table 4A, Figure 3). Of patients with tumors containing NE features who had clinical response ( $n=2/8$ ), the median duration of response was 13 weeks. There was no significant difference in the PFS between PUC and VUC among patients receiving ICI as first line ( $n=209$ ,  $p=0.62$ ) vs. subsequent therapy ( $n=194$ ,  $p=0.60$ , Table 4B), nor when patients were stratified by primary tumor in upper ( $p=0.38$ ) or lower tract ( $p=0.23$ , Table 4B). Again, two multivariate models were used, adjusting for 1) age, hemoglobin, albumin, ECOG PS 0-3 and presence of liver metastases, or 2) Bellmunt risk factors. There was no significant difference in PFS between PUC vs. VUC ( $p=0.56$  and  $p=0.50$  for model 1 and 2, respectively, Table 4C) or between PUC and NE ( $p=0.24$  and  $p=0.18$  for model 1 and 2, respectively, Table 4C).

## Discussion:

In our retrospective analysis of 519 patients with aUC who received ICI, histologic subtype did not impact ORR, PFS, or OS, except for NE features that portended shorter PFS and OS. Among patients with upper tract tumors, VUC has significantly shorter OS compared to PUC ( $p=0.03$ ). There is conflicting data about the response of VUC to first-line or neoadjuvant chemotherapy and/or radiotherapy<sup>4,8-9</sup>. No robust data exists from clinical trials regarding the impact of histology on ICI outcomes, with histology reported as a baseline characteristic without response data in one phase Ib study of anti-PD(L)1<sup>22</sup>. Considering the



prevalence of VUC, our findings contribute to the ongoing discussion about optimal use of ICI in aUC.

Putative biomarkers that might predict ICI response in aUC patients include tumor tissue PD-L1 expression, molecular subtype by gene expression signature, tumor mutational burden (TMB), T cell receptor clonality/diversity, among others<sup>12-15</sup>. Among VUC, PD-L1 expression by IHC has been found to be comparable between PUC and VUC and highest among VUC with squamous differentiation<sup>23</sup>. In addition, compared to UC, squamous cell bladder cancer<sup>24</sup> and UC with NE features<sup>25</sup> were associated with higher TMB, while bladder adenocarcinoma discordantly had lower TMB and reduced PD-L1 gene amplification<sup>24</sup>. These studies illuminate significant variation among subtypes of VUC and provide a molecular-based rationale for why VUC might respond as well as PUC to ICI, further supporting its use in these patients.

In our study, patients with tumors containing NE features had a shorter OS which remained significant in multivariate analysis. The identification of VUC by pathologic review remains a significant challenge given intra- and inter-tumor heterogeneity. Recently, genomic studies have defined subsets of bladder cancer, often discordant with histologic classification. For example, a subset of tumors termed ‘neuronal’ based on NE gene expression pattern from TCGA, notably without NE features on histology, had the shortest five-year survival<sup>26</sup>. A separate study identified NE-like tumors without concordant histology, which demonstrated poor OS compared to UC when treated with neoadjuvant chemotherapy and/or radical cystectomy<sup>27</sup>. Surprisingly, the TCGA ‘neuronal’ group demonstrated the highest ORR and OS of all subsets treated with atezolizumab in the IMvigor 210 phase II trial, hypothesized secondary to high TMB and/or low TGF- $\beta$  expression<sup>28</sup>. It is unclear why there is a different impact of NE features on OS in our study with similar sample size (n=11). We hypothesize that the different methods of classification of “neuronal” (molecular vs histologic) might have played a role. NE tumors in our study were classified by histology rather than assessment for ‘neuronal’ gene expression pattern. Further, potential selection and confounding factors may exist, including enrollment of healthier patients in other studies compared to our “real world” study. Overall, data suggests that NE tumors warrant further evaluation for new therapies in clinical trials and that gene expression may be used in the future, in addition to histology, for the identification of such cases. Given that overall only 28% of patients with aUC in our study responded to ICI, with a short median PFS, combination therapies may be clinically relevant. Gene expression analysis may identify more aggressive tumors and guide treatment selection. For instance, a small cell (NE-like) subset was found that is associated with poorer prognosis, yet it can overexpress the surface Delta Like Canonical Notch Ligand 3 (DLL3) that can be targeted by DLL3-targeted antibody-drug conjugates in clinical trials<sup>29</sup>. Another study demonstrated that paired urothelial and squamous components from the same tumor have significant transcriptional differences despite having similar driver mutations<sup>30</sup>, and thus may be susceptible to distinct targeted molecular therapies.

The strengths of our study include utilization of “real-world” data, multi-institution representation and a reasonably large cohort size overall. There are several limitations inherent to the retrospective nature of our study, such as lack of randomized comparisons or



external validation, heterogeneity in clinical practice and data collection across institutions, selection and confounding biases and missing data. Patients received different ICI across various lines of therapy and were not stratified by ICI; however, most received pembrolizumab or atezolizumab, which have randomized phase III trial data in platinum-refractory aUC. Patients with NE features had a small sample size. Median follow-up was relatively short. Data was derived from academic centers with UC pathology experts; however, there was no central radiology or pathology review, which is a major limitation. Fraction of VUC in each tumor was not reported and may have varied significantly. Rare tumors with 1 VUC subtype were included in 1 individual subtype analysis. Lastly, we note the ORRs observed in this retrospective analysis were higher than in most clinical trials, which we attribute possibly to differences in methodology. In our study, ORR was assessed by data collected based on reviewing clinician notes and radiographic studies, which might not correspond strictly to RECIST v.1.1 criteria in all cases. Despite these limitations, our study generated relevant hypotheses to be tested in larger cohorts and prospective studies.

## Conclusions:

In summary, there was no significant association between histologic variant subtypes and ORR among patients treated with ICI in this retrospective study. PFS and OS were comparable between PUC and VUC, but shorter in patients with tumors harboring NE features. Our data suggests that histology subtype may not be a biomarker of response to ICI, though patients with NE tumors seem to have poor long-term outcomes. In the absence of high-level definitive evidence, retrospective studies can provide “real world” information relevant to clinical practice. This study supports both routine use and further clinical trial investigation of ICI, including novel combinations, across histologic subtypes in aUC.

## Supplementary Material

Refer to Web version on PubMed Central for supplementary material.

## Acknowledgments:

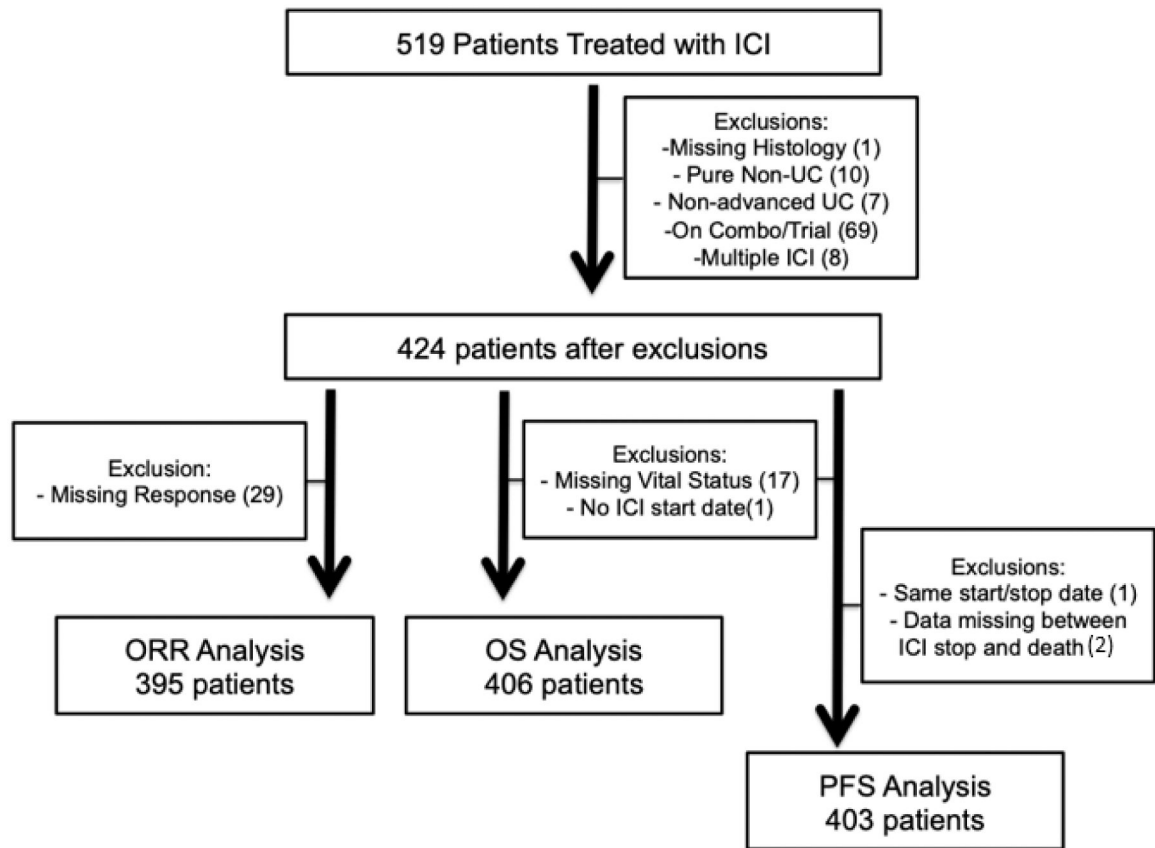
ARK was supported by the National Cancer Institute under training grant, award #T32CA009515. REDCap at ITHS is supported by the National Center for Advancing Translational Sciences of the National Institutes of Health under Award Number UL1 TR002319. EY and PG acknowledge the support from Seattle Translational Tumor Research Program at the Fred Hutchinson Cancer Research Center. DJP acknowledges support from the Imperial Experimental Cancer Medicine Centre, Cancer Research UK Imperial Centre and grant funding from the Wellcome Trust Strategic Fund (PS3416).

## References:

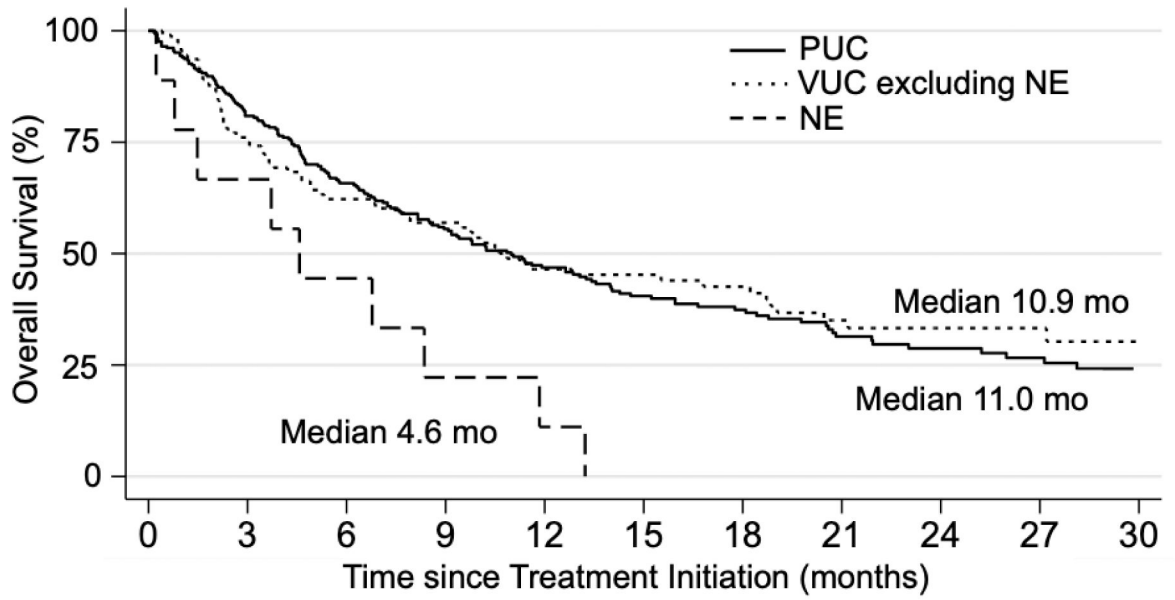
1. Antoni S, Ferlay J, Soerjomataram I, Znaor A, Jemal A & Bray F Bladder Cancer Incidence and Mortality: A Global Overview and Recent Trends. *Eur Urol* 2017;71:96–108. [PubMed: 27370177]
2. Humphrey PA, Moch H, Cubilla AL, Ulbright TM & Reuter VE The 2016 WHO Classification of Tumours of the Urinary System and Male Genital Organs-Part B: Prostate and Bladder Tumours. *Eur Urol* 2016;70:106–119. [PubMed: 26996659]
3. Wasco MJ, Daignault S, Zhang Y, Kunju LP, Kinnaman M, Braun T, et al. Urothelial carcinoma with divergent histologic differentiation (mixed histologic features) predicts the presence of locally advanced bladder cancer when detected at transurethral resection. *Urology* 2007;70:69–74. [PubMed: 17656211]

4. Hsieh MC, Sung MT, Chiang PH, Huang CH, Tang Y & Su YL The Prognostic Impact of Histopathological Variants in Patients with Advanced Urothelial Carcinoma. *PLoS One* 2015;10:e0129268. [PubMed: 26114748]
5. Antunes AA, Nesrallah LJ, Dall'Oglio MF, Maluf CE, Camara C, Leite KR, et al. The role of squamous differentiation in patients with transitional cell carcinoma of the bladder treated with radical cystectomy. *Int Braz J Urol* 2007;33:339–345; discussion 346. [PubMed: 17626650]
6. Honma I, Masumori N, Sato E, Takayanagi A, Takahashi A, Itoh N, et al. Local recurrence after radical cystectomy for invasive bladder cancer: an analysis of predictive factors. *Urology* 2004;64:744–748. [PubMed: 15491713]
7. Chalasani V, Chin JL & Izawa JI Histologic variants of urothelial bladder cancer and nonurothelial histology in bladder cancer. *Can Urol Assoc J* 2009;3:S193–198. [PubMed: 20019984]
8. Martin JE, Jenkins BJ, Zuk RJ, Blandy JP & Baithun SI Clinical importance of squamous metaplasia in invasive transitional cell carcinoma of the bladder. *J Clin Pathol* 1989;42:250–253. [PubMed: 2703540]
9. Scosyrev E, Ely BW, Messing EM, Speights VO, Grossman HB, Wood DP, et al. Do mixed histological features affect survival benefit from neoadjuvant platinum-based combination chemotherapy in patients with locally advanced bladder cancer? A secondary analysis of Southwest Oncology Group-Directed Intergroup Study (S8710). *BJU Int* 2011;108:693–699. [PubMed: 21105991]
10. Krasnow RE, Drumm M, Roberts HJ, Niemierko A, Wu CL, Wu S, et al. Clinical Outcomes of Patients with Histologic Variants of Urothelial Cancer Treated with Trimodality Bladder-sparing Therapy. *Eur Urol* 2017;72:54–60. [PubMed: 28040351]
11. Wang G, Xiao L, Zhang M, Kamat AM, Siefker-Radtke A, Dinney CP, et al. Small cell carcinoma of the urinary bladder: a clinicopathological and immunohistochemical analysis of 81 cases. *Hum Pathol* 2018;79:57–65. [PubMed: 29763719]
12. Fradet Y, Bellmunt J, Vaughn DJ, et al. Randomized phase III KEYNOTE-045 trial of pembrolizumab versus paclitaxel, docetaxel, or vinflunine in recurrent advanced urothelial cancer: results of >2 years of follow-up. *Ann Oncol* 2019;30:970–976. [PubMed: 31050707]
13. Powles T, Duran I, van der Heijden MS, et al. Atezolizumab versus chemotherapy in patients with platinum-treated locally advanced or metastatic urothelial carcinoma (IMvigor211): a multicentre, open-label, phase 3 randomised controlled trial. *Lancet* 2018;391:748–757. [PubMed: 29268948]
14. Sharma P, Siefker-Radtke A, de Braud F, et al. Nivolumab Alone and With Ipilimumab in Previously Treated Metastatic Urothelial Carcinoma: CheckMate 032 Nivolumab 1 mg/kg Plus Ipilimumab 3 mg/kg Expansion Cohort Results. *J Clin Oncol* 2019;37:1608–1616. [PubMed: 31100038]
15. Bellmunt J, de Wit R, Vaughn DJ, et al. Pembrolizumab as Second-Line Therapy for Advanced Urothelial Carcinoma. *N Engl J Med* 2017;376:1015–1026. [PubMed: 28212060]
16. Wilde L, Ali SM, Solomides CC, Ross JS, Trabulsi E & Hoffman-Censits J Response to Pembrolizumab in a Patient With Chemotherapy Refractory Bladder Cancer With Small Cell Variant Histology: A Case Report and Review of the Literature. *Clin Genitourin Cancer* 2017;15:e521–e524. [PubMed: 28143711]
17. Hunter L, Moser J, Sturge C, Barraza G & Colonna S First-line pembrolizumab therapy in a cisplatin-ineligible patient with plasmacytoid urothelial carcinoma: A case report. *J Oncol Pharm Pract* 2019;1078155219835006.
18. Nadal RM, Mortazavi A, Stein M, Pal SK, Davarpanah NN, Parnes HL, et al. Results of phase I plus expansion cohorts of cabozantinib (Cabo) plus nivolumab (Nivo) and CaboNivo plus ipilimumab (Ipi) in patients (pts) with with metastatic urothelial carcinoma (mUC) and other genitourinary (GU) malignancies. *Journal of Clinical Oncology* 2018;36:515–515. [PubMed: 29267131]
19. Harris PA, Taylor R, Thielke R, Payne J, Gonzalez N & Conde JG Research electronic data capture (REDCap)--a metadata-driven methodology and workflow process for providing translational research informatics support. *J Biomed Inform* 2009;42:377–381. [PubMed: 18929686]
20. Bellmunt J, Choueiri TK, Fougeray R, Schutz FA, Salhi Y, Winkquist E, et al. Prognostic factors in patients with advanced transitional cell carcinoma of the urothelial tract experiencing treatment

- failure with platinum-containing regimens. *J Clin Oncol* 2010;28:1850–1855. [PubMed: 20231682]
21. Bajorin DF, Dodd PM, Mazumdar M, Fazzari M, McCaffrey JA, Scher HI, et al. Long-term survival in metastatic transitional-cell carcinoma and prognostic factors predicting outcome of therapy. *J Clin Oncol* 1999;17:3173–3181. [PubMed: 10506615]
  22. Plimack ER, Bellmunt J, Gupta S, Berger R, Chow LQ, Juco J, et al. Safety and activity of pembrolizumab in patients with locally advanced or metastatic urothelial cancer (KEYNOTE-012): a non-randomised, open-label, phase 1b study. *Lancet Oncol* 2017;18:212–220. [PubMed: 28081914]
  23. Reis H, Serrette R, Posada J, Lu V, Chen YB, Gopalan A, et al. PD-L1 Expression in Urothelial Carcinoma With Predominant or Pure Variant Histology: Concordance Among 3 Commonly Used and Commercially Available Antibodies. *Am J Surg Pathol* 2019;43:920–927. [PubMed: 31135485]
  24. Jacob J, Bratslavsky G, Shapiro O, Liu N, Ferry EK, Basnet A, et al. Adenocarcinoma (ACB), urothelial carcinoma (UCB) and squamous cell carcinoma (SCCB) of the bladder: A Comprehensive Genomic Profiling (CGP) Study [abstract]. In: 2019 ASCO Annual Meeting; Chicago, IL: *J Clin Oncol* 37, 2019 (suppl; abstr 4533)
  25. Chang MT, Penson A, Desai NB, Socci ND, Shen R, Seshan VE, et al. Small-Cell Carcinomas of the Bladder and Lung Are Characterized by a Convergent but Distinct Pathogenesis. *Clin Cancer Res* 2018;24:1965–1973. [PubMed: 29180607]
  26. Robertson AG, Kim J, Al-Ahmadie H, Bellmunt J, Guo G, Cherniack AD, et al. Comprehensive Molecular Characterization of Muscle-Invasive Bladder Cancer. *Cell* 2017;171:540–556.e525. [PubMed: 28988769]
  27. Batista da Costa J, Gibb EA, Bivalacqua TJ, Liu Y, Oo HZ, Miyamoto DT, et al. Molecular Characterization of Neuroendocrine-like Bladder Cancer. *Clin Cancer Res* 2019;25:3908–3920. [PubMed: 30952638]
  28. Kim J, Kwiatkowski D, McConkey DJ, Meeks JJ, Freeman SS, Bellmunt J, et al. The Cancer Genome Atlas Expression Subtypes Stratify Response to Checkpoint Inhibition in Advanced Urothelial Cancer and Identify a Subset of Patients with High Survival Probability. *Eur Urol* 2019;75:961–964 [PubMed: 30851984]
  29. Koshkin VS, Garcia JA, Reynolds J, Elson P, Magi-Galluzzi C, McKenney JK, et al. Transcriptomic and Protein Analysis of Small-cell Bladder Cancer (SCBC) Identifies Prognostic Biomarkers and DLL3 as a Relevant Therapeutic Target. *Clin Cancer Res* 2019;25:210–221 [PubMed: 30327311]
  30. Hovelson DH, Udager AM, McDaniel AS, Grivas P, Palmbo P, Tamura S, et al. Targeted DNA and RNA Sequencing of Paired Urothelial and Squamous Bladder Cancers Reveals Discordant Genomic and Transcriptomic Events and Unique Therapeutic Implications. *Eur Urol* 2018;74:741–753. [PubMed: 30033047]

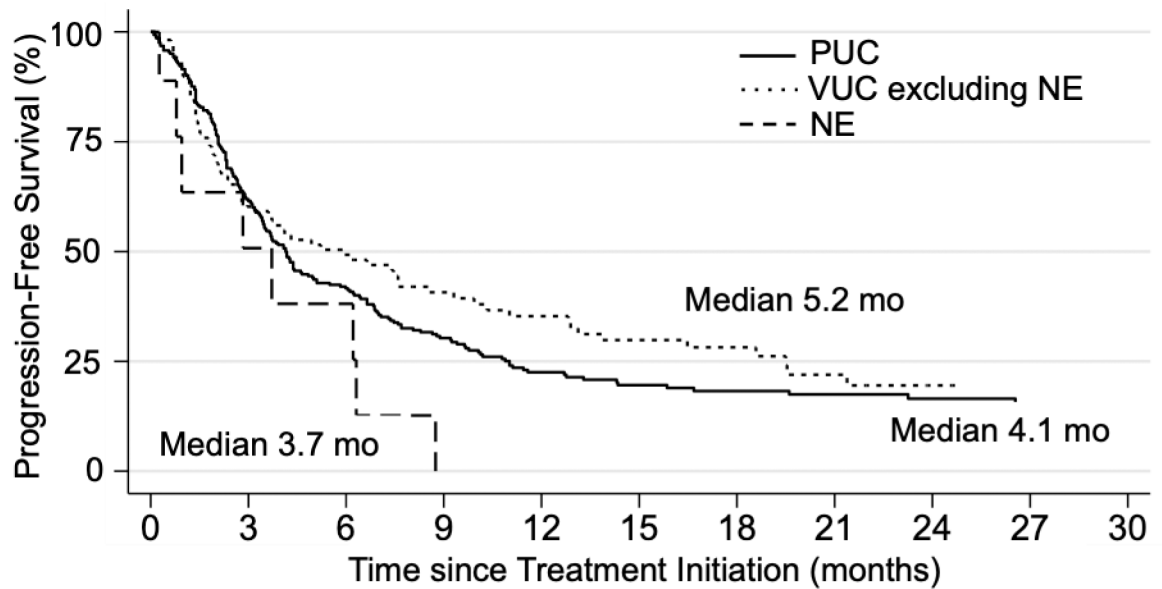


**Figure 1:**  
Consort diagram of patients for multi-institution cohort



# at risk	0	3	6	9	12	15	18	21	24	27	30
Pure	286	223	169	130	94	72	56	38	29	23	17
VUC w/o NE	111	79	60	51	38	35	29	20	14	11	7
NE	9	6	4	2	1	0	0	0	0	0	0

**Figure 2.** Overall survival (OS) after initiating ICI in patients with tumors containing neuroendocrine features compared to patients with PUC or VUC. Overall survival analysis of patients with aUC receiving ICI, with Kaplan-Meier curve depicting OS among patients with PUC (n= 286, solid line), VUC excluding NE (n= 111, dotted line) or tumors with NE features (n= 9, dashed line). Median OS was 11.0 months for patients with PUC vs. 4.6 months for patients with NE features (PUC vs. NE HR 2.75, 95%CI 1.40 – 5.40, p = 0.003). Median OS was 10.9 months for patients with VUC excluding NE (vs. NE HR 2.65, 95%CI 1.30 – 5.37, p = 0.007).



	# at risk										
	0	3	6	9	12	15	18	21	24	27	30
Pure	284	164	103	68	43	31	25	20	17	11	8
VUC w/o NE	110	59	43	31	26	22	14	9	4	2	2
NE	9	4	3	0	0	0	0	0	0	0	0

**Figure 3:**

Progression free survival (PFS) after initiating ICI among patients with tumors containing neuroendocrine features compared to patients with PUC or VUC.

PFS analysis of patients with aUC receiving ICI, with Kaplan-Meier curve depicting PFS among patients with PUC (n= 284, solid line), VUC excluding NE (n= 110, dotted line) or tumors with NE features (n= 9, dashed line). Median PFS was 4.1 months for patients with PUC, 5.2 months for patients with VUC excluding NE, and 3.7 months for patients with NE features (HR 2.24 compared to VUC without NE, 95%CI 1.07 - 4.69, p = 0.03).



**Table 1.**

Baseline characteristics of patients for overall survival analysis cohort.

<b>Histological Type</b>	<b>Pure UC (PUC)</b>	<b>Variant UC (VUC)</b>	<b>Neuro-endocrine (NE)</b>	<b>p value (PUC vs. VUC)</b>	<b>p value (PUC vs. NE)</b>
<b>Number of Patients</b>	<b>286</b>	<b>120</b>	<b>9</b>		
Age (mean ± SD)	69 +/- 11	69 +/- 10	70 +/- 10	0.91	0.73
Male	76%	71%	67%	0.33	0.54
Ever Smoker	65%	69%	78%	0.45	0.44
White race	80%	82%	89%	0.77	0.53
Upper Tract Tumors	14%	16%	14% (1 of 7)	0.74	1.00
Cystectomy or (Nephro)ureterectomy	51%	60%	29% (2 of 7)	0.12	0.24
Hgb<10	24%	28%	22%	0.45	0.88
Liver Metastasis	20%	15%	33%	0.28	0.31
Albumin < 4 g/dL	66%	66%	67%	0.88	0.95
Bellmunt score				0.42	0.03
0	15%	21%	11%		
1	53%	45%	67%		
2	28%	30%	0%		
3	4%	4%	22%		
ECOG PS				0.33	0.94
0	23%	26%	22%		
1	50%	53%	56%		
2	23%	21%	22%		
3	4%	1%	0%		
Type of ICI (# patients)				0.80	0.42
Atezolizumab	51%	50%	67%		
Avelumab	1%	0%	0%		
Durvalumab	3%	5%	11%		
Nivolumab	7%	7%	11%		
Pembrolizumab	38%	38%	11%		

VUC tumors contain both urothelial plus at least one variant histology. In this cohort, variants included squamous (n=51), micropapillary (n=27), sarcomatoid (n=16), plasmacytoid (n=11), adenocarcinoma (n=9), neuroendocrine (n=9), nested (n=2) and other (n=9).

Characteristics and laboratory data represented for date of ICI initiation. Bellmunt score 0-3 based on number of the following present at time of ICI: Hgb <10, presence of liver metastases, or ECOG PS >0.

Abbreviations: ICI, immune checkpoint inhibitor; Hgb, hemoglobin; ECOG, Eastern Cooperative Oncology Group; PS, performance status; NE, neuroendocrine; PUC, pure urothelial carcinoma; VUC, variant urothelial carcinoma

**Table 2A.**

Observed objective response rate (ORR) by tumor histology subtype

	<b>N</b>	<b>ORR (%)</b>	<b>OR (95% CI) vs. PUC</b>	<b>p value</b>
PUC	278	28%		
VUC	117	29%	1.03 (0.64 - 1.66)	0.90
Squamous	50	28%	0.98 (0.50 - 1.91)	0.95
Micropapillary	25	28%	0.98 (0.39 - 2.44)	0.97
Sarcomatoid	16	38%	1.51 (0.53 - 4.30)	0.44
Plasmacytoid	12	17%	0.50 (0.11 - 2.35)	0.38
Adenocarcinoma	10	20%	0.63 (0.13 - 3.03)	0.56
NE	8	25%	0.84 (0.17 - 4.25)	0.83
			<b>OR (95% CI) vs. VUC w/o NE</b>	
VUC without NE	109	29%		
NE	8	25%	0.80 (0.15 - 4.19)	0.79

NE: neuroendocrine, PUC, pure urothelial carcinoma; VUC, variant urothelial carcinoma

**Table 2B.**

Observed ORR by tumor histology subtype, per treatment line or primary tumor site

ORR (%)	PUC	VUC	OR (95% CI) vs. PUC	p value
First line (n= 199; 134 PUC, 65 VUC)	33%	28%	0.78 (0.41 - 1.50)	0.46
Subsequent (n = 196; 144 PUC, 52 VUC)	24%	31%	1.38 (0.69 - 2.79)	0.36
Upper tract (n= 51; 35 PUC, 16 VUC)	29%	13%	0.36 (0.07 – 1.87)	0.22
Lower tract (n= 325; 229 PUC, 96 VUC)	29%	33%	1.21 (0.73 – 2.02)	0.47

PUC, pure urothelial carcinoma; VUC, variant urothelial carcinoma

Author Manuscript

Author Manuscript

Author Manuscript

Author Manuscript

**Table 2C.**

Multivariate analysis of observed ORR by tumor histology subtype compared to PUC, utilizing two separate models with significant covariates

<b>PUC vs. VUC</b>	<b>OR (95% CI)</b>	<b>p value</b>
VUC	1.08 (0.66 - 1.77)	0.75
Age	1.03 (1.01 - 1.06)	0.007
Hgb	1.07 (0.93 - 1.22)	0.33
Albumin	1.47 (0.90 - 2.42)	0.13
VUC	1.07 (0.66 - 1.74)	0.77
Bellmunt 0	<i>reference</i>	<i>reference</i>
Bellmunt 1	1.36 (0.73 - 2.52)	0.33
Bellmunt 2	0.90 (0.45 - 1.79)	0.75
Bellmunt 3	0.60 (0.15 - 2.33)	0.46

<b>PUC vs NE</b>	<b>OR (95% CI)</b>	<b>p value</b>
NE	0.75 (0.15 - 3.88)	0.73
Age	1.04 (1.01 - 1.06)	0.01
Hgb	1.10 (0.94 - 1.29)	0.21
Albumin	1.37 (0.77 - 2.44)	0.29
NE	0.89 (0.17 - 4.69)	0.89
Bellmunt 0	<i>reference</i>	<i>reference</i>
Bellmunt 1	1.69 (0.77 - 3.68)	0.19
Bellmunt 2	1.09 (0.45 - 2.64)	0.85
Bellmunt 3	0.57 (0.11 - 3.04)	0.51

Logistic regression odds ratio (OR) was calculated to compare ORR of patients with PUC versus histology subtype (VUC or NE).

Subsequent therapy = patients received ICI during 2<sup>nd</sup> and beyond line therapy.

Abbreviations: Hgb, hemoglobin; NE, neuroendocrine; PUC, pure urothelial carcinoma; VUC, variant urothelial carcinoma

**Table 3A.**

Overall survival (OS) by tumor histology subtype

	<b>N</b>	<b>OS, months (95% CI)</b>	<b>HR (95% CI) vs. PUC</b>	<b>p value</b>
PUC	286	11.0 (8.8-13.4)		
VUC	120	10.1 (6.8-15.5)	1.08 (0.82 – 1.41)	0.60
Squamous	51	10.5 (4.9-18.8)	1.06 (0.73 – 1.53)	0.78
Micropapillary	27	9.8 (3.0-NR)	0.97 (0.57 – 1.65)	0.91
Sarcomatoid	16	11.5 (2.0-21.2)	1.27 (0.69-2.34)	0.44
Plasmacytoid	11	10.1 (1.0-16.8)	1.16 (0.55 – 2.48)	0.70
Adenocarcinoma	10	NR (1.5-NR)	0.52 (0.19 – 1.41)	0.20
NE	9	4.6 (0.2-11.8)	2.75 (1.40 – 5.40)	0.003
		<b>OS, months (95% CI)</b>	<b>HR (95% CI) vs. VUC w/o NE</b>	<b>p value</b>
VUC without NE	111	10.9 (7.6 – 18.7)		
NE	9	4.6 (0.2-11.8)	2.65 (1.31 – 5.37)	0.007

NE: Neuroendocrine; NR: not reached; PUC, pure urothelial carcinoma; VUC, variant urothelial carcinoma

Author Manuscript

Author Manuscript

Author Manuscript

Author Manuscript

**Table 3B.**

Overall survival (OS) by tumor histology subtype, per treatment line or primary tumor site

<b>OS, months (95% CI)</b>	<b>PUC</b>	<b>Variant UC</b>	<b>HR (95% CI) vs. PUC</b>	<b>p value</b>
First line (n = 211; 142 PUC, 69 VUC)	13.3 (10.2-20.6)	10.1 (6.8 -16.8)	1.22 (0.84-1.77)	0.30
Subsequent (n = 195; 144 PUC, 51 VUC)	9.2 (7.7-11.4)	10.9 (4.6 -19.0)	0.95 (0.64-1.42)	0.81
Upper tract (n= 57; 39 PUC, 18 VUC)	14 (10-28)	4 (2-19)	2.18 (1.10-4.32)	0.03
Lower tract (n= 330; 233 PUC, 97 VUC)	9 (7-13)	11 (7-19)	0.94 (0.69-1.28)	0.07

PUC, pure urothelial carcinoma; VUC, variant urothelial carcinoma

Author Manuscript

Author Manuscript

Author Manuscript

Author Manuscript



**Table 3C.**

Multivariate analysis of observed OS by tumor histology subtype (VUC or NE) compared to PUC, utilizing two distinct models

<b>PUC vs. VUC</b>	<b>HR (95% CI)</b>	<b>p value</b>
VUC	1.07 (0.81 – 1.43)	0.62
Hgb	0.96 (0.89 – 1.04)	0.32
Liver Metastasis	1.67 (1.22 – 2.29)	0.001
Albumin	0.45 (0.34 – 0.60)	<0.001
ECOG PS 0	<i>reference</i>	<i>reference</i>
ECOG PS 1	1.26 (0.89 – 1.77)	0.20
ECOG PS 2	1.36 (0.91 – 2.04)	0.14
ECOG PS 3	2.13 (0.94 – 4.80)	0.07
VUC	1.12 (0.85 – 1.58)	0.41
Bellmunt 0	<i>reference</i>	<i>reference</i>
Bellmunt 1	1.79 (1.19 – 2.69)	0.005
Bellmunt 2	2.90 (1.90 – 4.45)	<0.001
Bellmunt 3	4.27 (2.25 – 8.11)	<0.001
<b>PUC vs. NE</b>	<b>HR (95% CI)</b>	<b>p value</b>
NE	2.11 (1.06 – 4.19)	0.03
Hgb	1.01 (0.92 – 1.09)	0.90
Liver Metastasis	1.80 (1.25 – 2.60)	0.001
Albumin	0.41 (0.30 – 0.57)	<0.001
ECOG PS 0	<i>Reference</i>	<i>reference</i>
ECOG PS 1	1.01 (0.68 – 1.48)	0.98
ECOG PS 2	1.03 (0.65 – 1.64)	0.90
ECOG PS 3	1.79 (0.74 – 4.34)	0.19
NE	3.76 (1.36 – 5.59)	0.005
Bellmunt 0	<i>reference</i>	<i>reference</i>
Bellmunt 1	1.29 (0.82 – 2.05)	0.27
Bellmunt 2	2.32 (1.42 – 3.80)	0.001
Bellmunt 3	2.75 (1.35 – 5.58)	0.005

Cox hazard ratio (HR) was calculated to compare OS of patients with pure urothelial cancer versus each histology subtype (VUC as defined previously, or each variant histology).

Subsequent therapy = patients received ICI during 2<sup>nd</sup> and beyond line therapy.

Abbreviations: Hgb, hemoglobin; ECOG, Eastern Cooperative Oncology Group; PS, performance status, NR, not reached; NE, neuroendocrine; PUC, pure urothelial carcinoma; VUC, variant urothelial carcinoma.

**Table 4A.**

Progression-free survival (PFS) by tumor histology subtype

	<b>N</b>	<b>PFS, months (95% CI)</b>	<b>HR (95% CI) vs. PUC</b>	<b>p value</b>
PUC	284	4.1 (3.5 – 5.0)		
VUC	119	5.2 (3.0 - 7.6)	0.90 (0.70 -1.17)	0.43
Squamous	51	4.1 (2.1 - 7.5)	1.00 (0.70- 1.44)	0.99
Micropapillary	26	7.6 (2.1 - 21.4)	0.71 (0.43 - 1.19)	0.20
Sarcomatoid	16	10.3 (1.6 - 18.6)	0.92 (0.50 – 1.70)	0.80
Plasmacytoid	11	5.9 (1.0 – NR)	0.99 (0.49 - 2.01)	0.98
Adenocarcinoma	10	7.6 (1.2 - NR)	0.57 (0.25 - 1.27)	0.17
NE	9	3.7 (0.3 - 6.3)	1.87 (0.92 - 3.79)	0.09
		<b>PFS, months (95% CI)</b>	<b>HR (95% CI) vs. VUC w/o NE</b>	<b>p value</b>
VUC without NE	110	5.9 (3.0 - 8.5)		
NE	9	3.7 (0.3 - 6.3)	2.24 (1.07 - 4.69)	0.03

NE: Neuroendocrine; UC: urothelial carcinoma; PUC, pure urothelial carcinoma; VUC, variant urothelial carcinoma

**Table 4B.**

Progression-free survival (PFS) by tumor histology subtype, per treatment line or primary tumor site

<b>PFS, months (95% CI)</b>	<b>PUC</b>	<b>VUC</b>	<b>HR (95% CI) vs. PUC</b>	<b>p value</b>
First line (n= 209)	4.2 (3.1 – 6.2)	5.9 (2.7 – 9.3)	0.92 (0.65-1.30)	0.62
Subsequent (n = 194)	4.1 (3.5 - 5.5)	5.2 (2.8 – 8.5)	0.90 (0.61-1.33)	0.60
Upper tract (n= 57; 39 PUC, 18 VUC)	4 (2-7)	2 (1-5)	1.33 (0.70-2.50)	0.38
Lower tract (n= 327; 231 PUC, 96 VUC)	4 (3-6)	6 (4-10)	0.84 (0.63-1.12)	0.23

PUC, pure urothelial carcinoma; VUC, variant urothelial carcinoma

Author Manuscript

Author Manuscript

Author Manuscript

Author Manuscript

**Table 4C.**

Multivariate analysis of PFS by tumor histology subtype compared to PUC, with Bellmunt covariates

<b>PUC vs. VUC</b>	<b>HR (95% CI)</b>	<b>p value</b>
Variant UC	0.92 (0.70 – 1.21)	0.56
Age	0.98 (0.97-1.00)	0.01
Hgb	1.01 (0.94 – 1.08)	0.81
Liver Metastasis	1.85 (1.36 – 2.50)	<0.001
Albumin	0.58 (0.44 – 0.77)	<0.001
ECOG PS 0	<i>Reference</i>	<i>reference</i>
ECOG PS 1	1.19 (0.87 – 1.62)	0.29
ECOG PS 2	1.26 (0.86 – 1.84)	0.24
ECOG PS 3	2.02 (0.98 – 4.15)	0.06
Variant UC	0.91 (0.70 – 1.19)	0.50
Bellmunt 0	<i>reference</i>	<i>reference</i>
Bellmunt 1	1.37 (0.97 – 1.95)	0.08
Bellmunt 2	2.02 (1.40 – 2.93)	<0.001
Bellmunt 3	3.09 (1.70 – 5.60)	<0.001
<b>Pure UC vs. NE</b>	<b>HR (95% CI)</b>	<b>p value</b>
Neuroendocrine	1.57 (0.75 – 3.29)	0.24
Age	0.98 (0.97 – 0.99)	0.003
Hgb	1.05 (0.97 – 1.13)	0.24
Liver Metastasis	2.04 (1.44 – 2.89)	<0.001
Albumin	0.55 (0.40 – 0.76)	<0.001
ECOG PS 0	<i>reference</i>	<i>reference</i>
ECOG PS 1	1.00 (0.69 – 1.42)	0.97
ECOG PS 2	1.11 (0.72 – 1.70)	0.65
ECOG PS 3	1.88 (0.90 – 3.93)	0.09
Neuroendocrine	1.67 (0.78 – 3.55)	0.18
Bellmunt 0	<i>reference</i>	<i>reference</i>
Bellmunt 1	1.14 (0.76 - 1.71)	0.52
Bellmunt 2	1.86 (1.20 – 2.87)	0.01
Bellmunt 3	2.30 (1.17 – 4.54)	0.02

Cox hazard ratio (HR) was calculated to compare OS of patients with pure urothelial cancer versus each histology subtype (VUC as defined previously, or each variant histology).

Abbreviations: Hgb, hemoglobin; ECOG, Eastern Cooperative Oncology Group; NE, neuroendocrine; PS, performance status; PUC, pure urothelial carcinoma; VUC, variant urothelial carcinoma