

# UCLA

## UCLA Previously Published Works

### Title

Autonomic control of ventricular function in health and disease: current state of the art

### Permalink

<https://escholarship.org/uc/item/6x81v379>

### Journal

Clinical Autonomic Research, 33(4)

### ISSN

0959-9851

### Authors

van Weperen, Valerie YH

Ripplinger, Crystal M

Vaseghi, Marmar

### Publication Date

2023-08-01

### DOI

10.1007/s10286-023-00948-8

Peer reviewed



# Autonomic control of ventricular function in health and disease: current state of the art

Valerie Y. H. van Weperen<sup>1</sup> · Crystal M. Ripplinger<sup>2</sup> · Marmar Vaseghi<sup>1</sup>

Received: 2 January 2023 / Accepted: 20 April 2023  
© The Author(s), under exclusive licence to Springer-Verlag GmbH Germany 2023

## Abstract

**Purpose** Cardiac autonomic dysfunction is one of the main pillars of cardiovascular pathophysiology. The purpose of this review is to provide an overview of the current state of the art on the pathological remodeling that occurs within the autonomic nervous system with cardiac injury and available neuromodulatory therapies for autonomic dysfunction in heart failure.

**Methods** Data from peer-reviewed publications on autonomic function in health and after cardiac injury are reviewed. The role of and evidence behind various neuromodulatory therapies both in preclinical investigation and in-use in clinical practice are summarized.

**Results** A harmonic interplay between the heart and the autonomic nervous system exists at multiple levels of the neuraxis. This interplay becomes disrupted in the setting of cardiovascular disease, resulting in pathological changes at multiple levels, from subcellular cardiac signaling of neurotransmitters to extra-cardiac, extra-thoracic remodeling. The subsequent detrimental cycle of sympathovagal imbalance, characterized by sympathoexcitation and parasympathetic withdrawal, predisposes to ventricular arrhythmias, progression of heart failure, and cardiac mortality. Knowledge on the etiology and pathophysiology of this condition has increased exponentially over the past few decades, resulting in a number of different neuromodulatory approaches. However, significant knowledge gaps in both sympathetic and parasympathetic interactions and causal factors that mediate progressive sympathoexcitation and parasympathetic dysfunction remain.

**Conclusions** Although our understanding of autonomic imbalance in cardiovascular diseases has significantly increased, specific, pivotal mediators of this imbalance and the recognition and implementation of available autonomic parameters and neuromodulatory therapies are still lagging.

**Keywords** Autonomic · Sympathetic · Parasympathetic · Heart failure · Ventricular arrhythmias

## Introduction

The autonomic nerves that innervate the heart—in a healthy condition—fine-tune every heartbeat, altering cardiac output to meet the underlying physiological demands of the organism. The beat-to-beat feedback is initiated by afferent nerves traveling from the heart to central and peripheral autonomic integration centers. Upon integration, efferent signals are generated in these relay centers and transmitted to the heart

via the cardiomotor neurons of the sympathetic and/or parasympathetic nervous system [1]. As a result, almost all facets of cardiac function (e.g., chronotropy, dromotropy, inotropy, and lusitropy) are continuously regulated. This multitiered arrangement plays a pivotal role in homeostatic cardiac control under healthy circumstances, but is disrupted in cardiovascular diseases, establishing a cycle in which cardiac deterioration and autonomic dysfunction are reciprocally perpetuated.

✉ Marmar Vaseghi  
mvaseghi@mednet.ucla.edu

<sup>1</sup> Division of Cardiology, Department of Medicine, UCLA Cardiac Arrhythmia Center, University of California, 100 Medical Plaza, Suite 660, Los Angeles, CA 90095, USA

<sup>2</sup> Department of Pharmacology, University of California, Davis, USA

## Afferent innervation

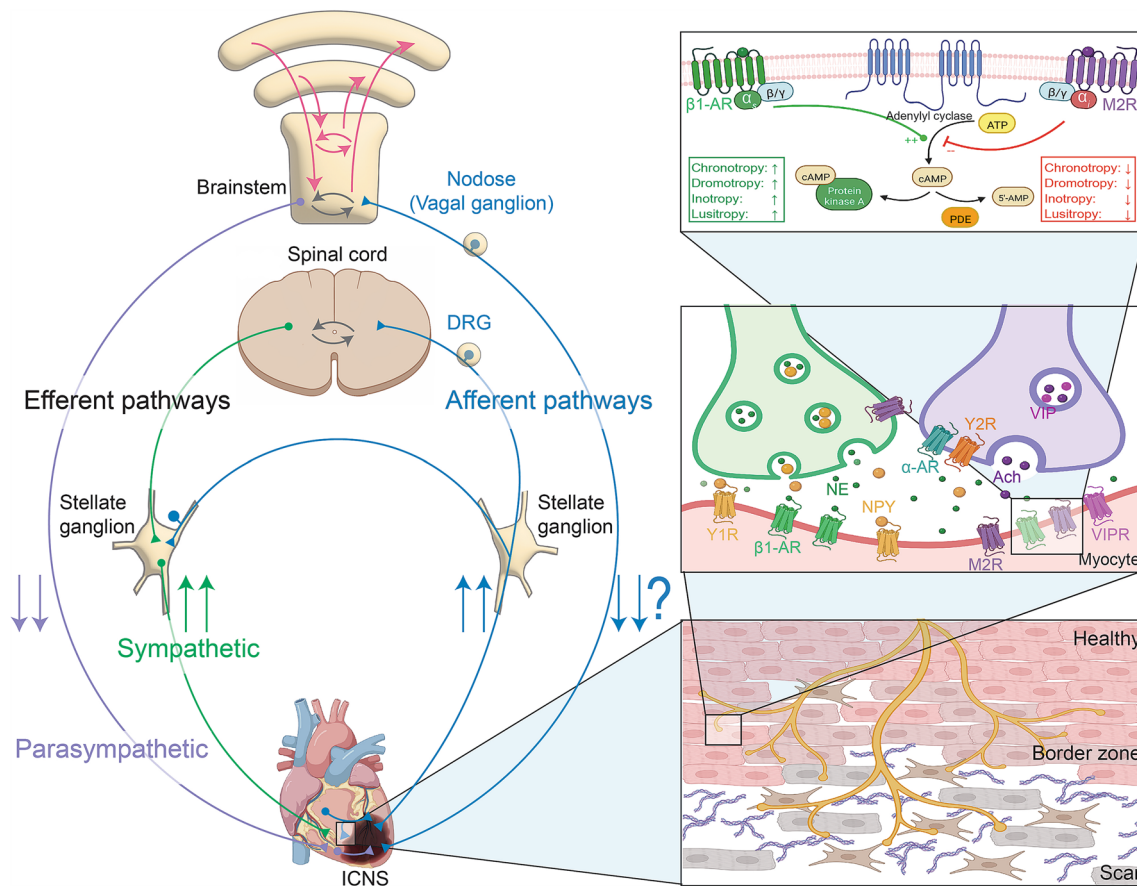
Cardiac autonomic modulation relies on mechano- and chemosensory information transmitted by cardiac afferent neurons. The sensory neurites of these neurons travel with the vagal and sympathetic nerves and relay information to

(1) the cardiac ganglionated plexi and possibly the stellate ganglia and (2) via the dorsal root ganglia and vagal ganglia to the central nervous system (Fig. 1) [1]. The majority of cardiac sensory neurons seem to have the capability to transmit both mechanical and chemosensory information, though some neurons are selective for one or the other [2, 3]. Transmission occurs via different neurotransmitters, including gamma-aminobutyric acid (GABA) and glutamate. GABA, through depolarizing second-order neurons, inhibits sensory transmission, whereas glutamate is the primary excitatory neurotransmitter of cardiac afferent neurons [4–7].

A set of cardiac afferent fibers travel to the central nervous system via the vagus nerve. The cell bodies of these pseudounipolar neurons, which are also named “vagal afferents,” lie in the left and right inferior vagal (nodose) ganglia

[1]. In the medulla, these afferents synapse upon second-order neurons in the nucleus tractus solitarius (NTS), some of which activate vagal efferent outflow via synapses onto the vagal nuclei in the brain stem [2, 8]. No laterality in the territory sensed by vagal afferents has been reported [9].

Conversely, another subset of centrally projecting afferent neurons have their somata in the cervical (C6) to high thoracic (T6) dorsal root ganglia. These pseudounipolar neurons synapse onto second-order neurons in the dorsal horn of the spinal cord, and ultimately communicate with higher brain nuclei via the spinothalamic tract (Fig. 1) [10]. Activation of these “spinal afferents” and subsequent integration of the chemo- and/or mechanosensory information in the thalamus, parabrachial gray, and other brain stem and hypothalamic centers results in a predominantly sympathetic



**Fig. 1** Cardiac autonomic innervation. Autonomic innervation of the heart is regulated through multiple intrathoracic and extrathoracic reflex loops that consist of afferent (sensory) and efferent (motor) neurons and nerves. Sympathetic afferent activation increases sympathetic outflow to the heart, and vagal afferent activation increases cardiac vagal tone. Cardiac injury, such as a myocardial infarction, increases sympathetic afferent activation, further enhancing sympathoexcitation. Novel data on vagal afferents suggest that remodeling in the vagal ganglia results in reduced neurotransmission, hence decreasing vagal outflow. Myocardial infarction also causes cardiac

denervation followed by localized nerve sprouting in the scar and border zone regions. At the level of the nerve–myocyte interface, sympathetic and parasympathetic neurons release different neurotransmitters that establish opposing effects on the heart and inhibit each other’s downstream actions. With sympathoexcitation, acetylcholine (ACh) release appears to be inhibited, and specific remodeling of channels and downstream signaling occurs, further enhancing the effects of sympathetic activation on calcium ( $\text{Ca}^{2+}$ ) and cyclic adenosine monophosphate (cAMP) signaling

motor response. This is also known as the cardiac sympathetic afferent response (CSAR) [11, 12].

Other cardiac afferent nerves appear to synapse onto neurons of the intrathoracic ganglia, including the intrinsic cardiac nervous system, and possibly those of the stellate ganglia and thoracic chain, evoking local reflex loops to modulate cardiac function (Fig. 1) [2, 13].

Lastly, cardiac function is also modulated based on sensory information transmitted by extracardiac afferent nerves. Mechanoreceptors in the aortic arch and carotid arteries sense blood pressure and transmit this information to the brain stem. This in turn induces reflexive changes in autonomic efferent tone to preserve cardiac output [8, 14, 15]. Chemosensory neurites in these same peripheral vessels as well as central chemoreceptors in the ventral medulla and retrotrapezoid nucleus sense and transmit information on hypoxemia and hypercapnia, respectively. The integration of these stimuli affects autonomic efferent outflow to properly match ventilation with perfusion [16–18].

## Cardiac efferent neurons

Sympathetic and parasympathetic motor neurons modulate cardiac function, often in a “yin-yang” manner [13]. Myelinated preganglionic neurons release acetylcholine (ACh), which binds to nicotinic receptors of postganglionic neurons, depolarizing these neurons, which innervate the myocardium.

### Sympathetic efferents

Sympathetic preganglionic neurons receive central input from the rostral ventromedial and ventrolateral medulla, the A5 area of the pons, and the paraventricular nucleus of the hypothalamus (Fig. 1) [1, 13]. Preganglionic sympathetic neurons, which house their cell bodies in the intermediolateral cell column of the spinal cord, synapse onto postganglionic neurons in the left and right sympathetic chain. Cardiac sympathetic postganglionic nerves travel from the stellate ganglia (a fusion of the inferior cervical ganglion and the first thoracic ganglion), T2 to T4, middle cervical, and to a lesser extent, the superior ganglia, to the heart. In addition to central efferent outflow, cardiac afferents synapsing in the stellate ganglia can provoke local intrathoracic extracardiac reflex loops (Fig. 1) [1, 19].

### Adrenergic signaling

At cardiac sympathetic nerve varicosities, norepinephrine (NE) is the primary neurotransmitter. Briefly, NE binds to beta-adrenergic receptors, stimulating adenylyl cyclase to increase production of cyclic adenosine monophosphate

(cAMP), a key second messenger in the cardiomyocyte signaling cascade. cAMP can activate protein kinase A (PKA) to phosphorylate many downstream targets involved in intracellular  $\text{Ca}^{2+}$  handling, including phospholamban (PLB), ryanodine receptors (RyR), and L-type  $\text{Ca}^{2+}$  channels. This leads to an increase in the amount of intracellular  $\text{Ca}^{2+}$  available for contraction, and therefore, enhances inotropy [20–23]. cAMP also directly activates the funny current ( $I_f$ ) in pacemaker cells, which accelerates diastolic depolarization, leading to positive chronotropy [24]. The same PKA-mediated changes to intracellular  $\text{Ca}^{2+}$  handling that contribute to positive inotropy also lead to increased diastolic  $\text{Ca}^{2+}$  leak from the sarcoplasmic reticulum (SR), which activates the  $\text{Na}^+$ - $\text{Ca}^{2+}$  exchanger (NCX) to remove the excess  $\text{Ca}^{2+}$ , leading to a net depolarizing current (NCX exchanges 3  $\text{Na}^+$  ions for 1  $\text{Ca}^{2+}$  ion). This mechanism, termed the “ $\text{Ca}^{2+}$  clock,” further contributes to diastolic depolarization and positive chronotropy upon beta-adrenergic activation [25–27]. Positive lusitropy (faster relaxation) is aided by PKA phosphorylation of PLB, which relieves inhibition of the SR  $\text{Ca}^{2+}$ -ATPase (SERCA) pump to increase the rate of  $\text{Ca}^{2+}$  reuptake into the SR, increasing the rate of relaxation [28]. PKA phosphorylation of troponin I decreases the myofilament’s affinity for  $\text{Ca}^{2+}$ , which also allows for faster  $\text{Ca}^{2+}$  dissociation and positive lusitropy [29]. Beta-adrenergic activity leads to a PKA-mediated increase in the slow delayed rectifier  $\text{K}^+$  ( $I_{Ks}$ ) current [30]. This repolarizing current opposes increases in depolarizing  $I_{\text{CaL}}$ , resulting in shortening of the cardiac action potential, and contributes to sympathetic-mediated changes in repolarization (Fig. 1) [31].

In addition to NE-mediated beta-adrenergic effects, sympathetic responses are enhanced by the release of sympathetic co-transmitters, such as neuropeptide Y (NPY) and galanin (Fig. 1). NPY is believed to be released during higher levels of sympathetic activation, and binds Y1-receptors on the myocardium [32, 33]. Y1-receptor stimulation has been shown to impact SR  $\text{Ca}^{2+}$  handling (in a cAMP-independent manner) and further increases the amount of  $\text{Ca}^{2+}$  available for contraction [34]. In this way, NPY augments the sympathoexcitatory effects of NE, as sympathetic stimulation is capable of inducing cardiac electrophysiological effects and positive inotropy in the presence of complete beta-blockade [35]. In addition, binding of NPY to Y2-receptors on parasympathetic nerve terminals appears to inhibit cardiac parasympathetic acetylcholine release [36], which could further augment the relative effects of the sympathetic nervous system. Galanin is also co-released by sympathetic nerves, although at lower levels than NPY [33]. Galanin’s effects appear to be similar to NPY, as it can also inhibit acetylcholine release by binding to galanin receptors (GalR1) on parasympathetic neurons [33].

Interestingly, even though the postganglionic sympathetic nerves from both the right and the left stellate ganglia release the same neurotransmitters, different cardiac effects are observed by left versus right stellate ganglion stimulation [37, 38]. In part, this difference is due to variability in the areas of innervation; although both sides innervate all aspects of the ventricular myocardium, sympathetic nerves from the right sympathetic chain have more robust innervation of the atria, including the sinoatrial node and the AV-node [39, 40], whereas sympathetic nerves coming from the left sympathetic chain may have more pronounced effects on ventricular contraction [41], though interspecies differences may exist. Furthermore, while stellate ganglia innervate the left ventricular anterior wall, they induce differing electrophysiological effects; left stellate ganglion stimulation enhances electrophysiological heterogeneities to a greater extent than right stellate ganglion stimulation [42], an effect that may be driven by greater heart rate effects of right stellate stimulation, somewhat limiting the extent of regional variability in action potential durations.

### Parasympathetic efferents

Parasympathetic preganglionic neurons have their cell bodies in the dorsal motor nucleus and nucleus ambiguus of the medulla (Fig. 1) [1, 13]. These neurons transmit signals via the vagus nerve and synapse onto postganglionic neurons in the cardiac ganglionated plexus, which is part of the intrinsic cardiac nervous system [43]. Thus, in contrast to the sympathetic nervous system, the postganglionic nerves of the parasympathetic nervous system are found near the end organ, and most of the distance is traversed by the myelinated preganglionic fibers (Fig. 1).

### Muscarinic signaling

The postganglionic parasympathetic nerves release ACh, which binds to muscarinic (M2) ACh receptors on cardiomyocytes of the atria, sinoatrial and atrioventricular node, and to a lesser extent, ventricles. In contrast to sympathetic innervation, no laterality in cervical vagal cardiac innervation has been reported [44–46]. This observation may be related to the fact that experimentally induced stimulation of preganglionic neurons may allow the postganglionic neurons and close connections within the intrinsic cardiac nervous system (ICNS) to establish a more global and homogeneous response [46].

Binding of ACh to M2 receptors on cardiomyocytes inhibits adenylyl cyclase production of cAMP, thereby opposing the effects of sympathetic-mediated beta-adrenergic receptor stimulation. These opposing effects typically cause negative inotropy, chronotropy, dromotropy, and lusitropy (Fig. 1). ACh (via M2 receptor binding) also increases

the ACh-sensitive  $K^+$  current ( $I_{K_{ACh}}$ ), which hyperpolarizes the membrane potential of pacemaker cells, thereby slowing diastolic depolarization and decreasing heart rate [47, 48]. Moreover, the interactions between the sympathetic and parasympathetic nervous system are beyond simply antagonizing myocardial effects. At the level of the nerve terminals, presynaptic receptors modulate sympathetic and parasympathetic neurotransmitter release (Fig. 1) [49]; ACh, released from the parasympathetic nerve terminals, binds to muscarinic receptors on postganglionic sympathetic nerve terminals and inhibits the release of NE [50]. Similarly, activation of alpha-1 receptors and NPY-2 receptors on parasympathetic nerve terminals by NE and NPY has been suggested to decrease release of ACh, though these effects have only been studied in vitro [36, 49, 51].

Finally, the postganglionic parasympathetic nerves also release vasoactive intestinal peptide (VIP), which is released at higher levels of vagal nerve stimulation (Fig. 1). VIP binds to VIP receptors on cardiomyocytes (VPAC1 and VPAC2). These G-protein-coupled receptors stimulate adenylyl cyclase to produce cAMP and have been shown to cause tachycardia via mechanisms similar to those of beta-adrenergic activation [52–54]. VIP may also act at the parasympathetic preganglionic–postganglionic synapses. For example, there is evidence that VIP receptor inhibition enhances the bradycardic response to vagal nerve stimulation, but that VIP receptor inhibition has no effect on resulting bradycardia if postganglionic parasympathetic fibers are activated with nicotine, suggesting a role for VIP in parasympathetic preganglionic–postganglionic signaling [55].

### Autonomic remodeling after myocardial infarction and in heart failure with reduced ejection fraction

Cardiovascular disease, such as a myocardial injury, myocardial infarction, or long-standing volume or pressure overload resulting in heart failure, induce autonomic remodeling and progressive sympathovagal imbalance. This process is initially prompted by decreased cardiac output, which increases sympathetic outflow for hemodynamic compensation. Paradoxically, long-standing sympathoexcitation and subsequent autonomic and cardiac remodeling induce pathological myocardial changes that result in a cycle of autonomic dysfunction and cardiac deterioration.

### Afferent remodeling

Diminished cardiac function is continuously sensed by cardiac afferents, initiating changes that affect not only afferent neurotransmission but also (central) efferent control.



Vagal afferent remodeling in the nodose (vagal) ganglia was studied by Salavatian et al. [9] in a porcine model of chronic myocardial infarction. An increase in the number of nociceptive, but not mechanosensitive, afferent neurons was observed [9]. Paradoxically, the functional output of these afferent neurons was decreased, and this was associated with an increased expression of the inhibitory neurotransmitter GABA and a decrease in neuronal nitric oxide synthase (nNOS), an afferent neuromodulator with homeostatic properties [56]. In addition, glial fibrillary acidic protein (GFAP) expression by satellite glial cells, a marker of glial activation, was increased [9]. Collectively, these results indicated extensive structural and functional remodeling of vagal afferent neurons after myocardial infarction that resulted in decreased vagal nociceptive afferent neurotransmission.

Spinal afferents, on the other hand, become tonically activated in the setting of cardiovascular disease, resulting in an enhanced CSAR [57], and continuous stimulation of the sympathoexcitatory efferent reflex. This is reflected by increased expression of angiotensin 1 receptors in the nucleus of the solitary tract (NTS), paraventricular nucleus (PVN), and rostral ventrolateral medulla (RVLM), and altered availability of signaling molecules, including reduced nitric oxide [58, 59]. In the dorsal root ganglia, the number of afferent neurons thought to be involved in nociception [characterized by the expression of calcitonin gene-related peptide (CGRP)] was increased after myocardial infarction, and the size of these neurons was also increased [60].

Accordingly, experimental studies have also demonstrated that ablation of transient receptor potential vanilloid 1 (TRPV1)-expressing cardiac nociceptive afferents through the injection of the neurotoxin, resiniferatoxin, in the pericardial space (which ablates both vagal and spinal cardiac afferents) decreased susceptibility for ventricular arrhythmias and improved cardiac function [61, 62].

Lastly, afferent nerve activity in the ICNS is also altered in cardiovascular diseases. This local remodeling includes upregulation of VIP in the ICNS, which might enhance local nociceptive signaling [63].

### Sympathetic efferent remodeling

Increased sympathetic efferent outflow is the main outcome of autonomic remodeling in cardiovascular disease, though it may result from multiple pathological adaptations at the level of the central nervous system, the sympathetic chain, and the heart.

As mentioned above, increased spinal afferent signaling promotes central efferent sympathetic outflow to the heart [12, 57]. In the stellate ganglia, postganglionic sympathetic neurons hypertrophy and demonstrate increased synaptic density [64, 65]. Functionally, neurons increase their firing rates and amplitude, while also expressing less

nNOS [66–68]. As nNOS normally inhibits NE release from the sympathetic nerves [68, 69] and dampens cardiac effects by inhibition of the L-type  $\text{Ca}^{2+}$  channels [70], sympathetic activity as well as cardiac effects of sympathetic stimulation become compounded. Interestingly, another hallmark of stellate ganglia remodeling is cholinergic transdifferentiation [71, 72]. Though the exact mechanisms behind this process remains unclear, it is possible that this transdifferentiation may enhance sympathetic outflow through mimicking pre- to postganglionic nerve transmission due to collateral projections from neighboring stellate ganglia neurons [73], as it has now been demonstrated that stellate neurons can activate their neighboring neurons through release of ACh [74]. Moreover, satellite glial cells, which envelope the sympathetic neurons and can modulate their function and activity, also show signs of hyperactivity as indicated by increased expression of GFAP [64].

At the cardiac sympathetic nerve terminals, neural remodeling induces various molecular changes, including a decreased expression of the NE transporter [75] and a paradoxical decrease in NE and tyrosine hydroxylase (TH), the rate-limiting enzyme in NE production [76]. Nevertheless, the increased NE and NPY release due to increased firing rates combined with reduced NE reuptake result in incomplete binding of these neurotransmitters and neuropeptides by their respective cardiac receptors, culminating in their spillover into systemic circulation. Correspondingly, higher plasma levels of NE and NPY have been reported in patients with cardiovascular diseases [77–79]. Increased NE levels may be related to both increased neuronal release of NE and relatively decreased NE reuptake [80]. Increased NE and NPY levels are associated with a poorer survival and increased ventricular arrhythmias after acute myocardial infarction and in heart failure [81–83].

At the level of the heart, autonomic remodeling also alters the distribution and function of sympathetic nerve terminals and their corresponding adrenergic receptors; regions of sympathetic hyperinnervation coexist with patches of sympathetic denervation. For example, nerve growth factor (NGF) becomes acutely upregulated after myocardial infarction and in cardiac hypertrophy, as it tries to promote nerve regeneration (Fig. 1) [84, 85]. However, after chronic myocardial injury, NGF becomes downregulated by continuously increased levels of NE [86, 87]. Even in the setting of elevated NGF, however, many regions of the injured myocardium remain denervated following myocardial infarction, due to the presence of chondroitin sulfate proteoglycans (CSPGs), which can inhibit sympathetic axonal outgrowth [88, 89]. This spatial and temporal variation in neuronal regeneration further enhances heterogeneity in myocardial innervation, predisposing to ventricular arrhythmias [84, 85].

Chronic sympathetic hyperactivity in heart failure results in an overall decrease in beta-1-adrenergic receptor density by approximately 50%, changing the beta-1 to beta-2 receptor ratio (Table 1) [90]. Furthermore, beta-2 receptors, which are normally located within the t-tubules of cardiomyocytes, redistribute to the plasma membrane, resulting in a loss of the normally compartmentalized downstream cAMP signaling [91]. This redistribution may explain the arrhythmogenic consequences of beta-2 stimulation in heart failure [92]. In addition, there is upregulation of the G-protein-coupled receptor kinase 2 (GRK2) [90, 93], which desensitizes the beta-adrenergic receptors on the myocyte and impairs the ability of the heart to respond to sympathoexcitation [94, 95], causing a form of functional denervation, which can exacerbate electrical heterogeneities in response to sympathetic activation. Recently, another kinase in the GRK family, GRK5, has been found to be responsible for switching of the beta-1 signaling from physiological cAMP-PKA to pathological calmodulin-dependent kinase II (CaMKII) activity that contributes to the progression of heart failure [96]. Increased levels of NPY can also cause a downregulation of cardiac NPY-1 receptors in heart failure patients [97], though a paradoxical increase in NPY-2 receptors has been reported in a rat model of heart failure (Table 1)

**Table 1** Changes in expression of cardiac ion currents, channels, and receptors in heart failure

	Up/downregulation
<b>Ion currents and channels</b>	
$I_{CaL}$	↓ in severe heart failure, ↑ in moderate heart failure
$I_{CaT}$	↑
$I_f$	↓ in SA node, ↑ in ventricle
$I_{K1}$	↓
$I_{K,ATP}$	↑
$I_{Kr}$	↓
$I_{Na}$	↓
$I_{Na-K}$	↓
$I_{NCX}$	↑
$I_{to}$	↓↓
CAMKII	↑
Cx43	↓
Phospholamban	↓
SERCA	↓
<b>Receptors</b>	
β1-receptor	↓
β2-receptor	=
α1-receptor	↑
NPY-1 receptor	↓
NPY-2 receptor	(↑, rat model)
RYR2	↓

↑: upregulated, ↓: downregulated, =: expression unchanged

[98]. The functional effects of this upregulation remain to be elucidated. Lastly, density of alpha-1-receptors remains unchanged in the setting of heart failure (Table 1). These receptors seem to exert an important cardioprotective role [99, 100], and blockade of these receptors increases cardiac morbidity and mortality [101, 102]. Heart-failure-induced changes in cardiac receptors and neurotransmitters, coupled with previously described remodeling of ion channels and currents, [103, 104] (Table 1) collectively destabilize cardiac electrophysiology and increase susceptibility to both atrial and ventricular arrhythmias.

Despite the well-known pathological effects of chronic sympathetic hyperactivity in heart failure, loss of sympathetic nerves following myocardial infarction (MI) can also alter signaling and arrhythmia susceptibility. In this respect, the degree of sympathetic nerve loss post-myocardial infarction is an important predictor of arrhythmias and sudden cardiac death [105–107]. Sympathetic denervation can result in areas of beta-adrenergic supersensitivity, observed in patients and large animal models after MI [108, 109]. Denervation is also associated with a downregulation of the transient outward  $K^+$  current ( $I_{to}$ ) [110], which is responsible for the early phase of repolarization. Therefore, in pathological conditions wherein sympathetic hyperactivity occurs along with regional denervation, the combined effects of elevated catecholamines and regional adrenergic supersensitivity may be particularly arrhythmogenic. Indeed, beta-adrenergic supersensitivity has been experimentally shown to be an important contributor to arrhythmias in the setting of sympathetic hypoinnervation and myocardial infarction [89, 111].

### Parasympathetic efferent remodeling

The central and peripheral remodeling processes that underlie parasympathetic withdrawal in the setting of heart failure have been studied to a much lesser extent than sympathetic alterations.

With regard to central parasympathetic function, it was shown that central vagal drive, as reflected by inputs to postganglionic parasympathetic neurons, is reduced after myocardial infarction. Basal activity of neurons in the intrinsic cardiac ganglia that respond to vagal nerve stimulation was decreased, while those that decrease their firing rates with vagus nerve stimulation showed higher baseline activity [112], suggesting reduced central vagal inputs to these neurons. Novel data suggests that vagal afferent neurotransmission is reduced after myocardial infarction, as a result of remodeling that occurs in the vagal (nodose) sensory neurons, reducing efferent vagal tone [9, 113].

In addition, postganglionic neurons in the ICNS express less choline acetyltransferase, whereas muscarinic receptors and VIP expression are upregulated [63, 114, 115]. ICNS

neurons of patients with cardiovascular disease demonstrate hypertrophy, while also exhibiting cytoplasmic inclusions and lipofuscins, markers of degeneration. Nevertheless, myocardial ACh levels and the ICNS neuronal patterns and machinery appear to remain intact. When vagal output is increased with electrical vagal nerve stimulation, myocardial responses remain and are even enhanced in animals after chronic myocardial infarction compared with animals with normal hearts [112].

Lastly, sympathovagal imbalance is further promoted by the antagonizing effects of sympathetic activation on parasympathetic function. As mentioned, release of NPY at the sympathetic nerve terminals has been demonstrated to impede parasympathetic release of ACh *in vitro* [36]. Moreover, increased spinal afferent signaling might similarly affect parasympathetic withdrawal and dysfunction. However, the precise mechanisms through which sympathovagal imbalance is perpetuated after cardiovascular injury and how these processes could be targeted clinically require additional (*in vivo*) investigations.

## Autonomic imbalance in other ventricular pathologies

While this review is focused on ventricular autonomic control, it is important to note that the autonomic nervous system plays a role in a vast array of other cardiovascular pathologies, including postural orthostatic tachycardia syndrome (POTS), syncope, atrial fibrillation, baroreflex failure, and more recently, long coronavirus (COVID-19). Moreover, ventricular autonomic instability can also be iatrogenic, for example, ablation of epicardial ganglionated plexi as a treatment for atrial fibrillation paradoxically increased susceptibility for ventricular arrhythmias in large animal models and patients that have previously suffered from a myocardial infarction [116–118]. Finally, given its global impact, much of the research and data on ventricular autonomic control has focused on changes that occur in heart failure and sudden cardiac death related to myocardial injury/infarction. However, the role of the autonomic nervous system in several pathologies that can affect the ventricles, including hypertension, amyloidosis, Takotsubo cardiomyopathy, and autonomically mediated ventricular arrhythmias in specific channelopathies, deserve special mention.

## Essential hypertension

Essential hypertension, also known as idiopathic hypertension, affects up to 45% of the adult population worldwide [119]. Neurohumoral dysregulation and consequent sympathetic activation appears to be central to the

etiology of hypertension [120–123], and hypertensive animal models and patients exhibit increased plasma norepinephrine spillover compared with normotensive controls [124, 125]. Moreover, autonomic imbalance appears to develop prior to the onset of overt hypertension [126], as reflected by reduced heart rate variability (HRV) with an increased in low-frequency (LF) power and increased NE plasma levels in adults with new-onset hypertension [127].

Sympathetic dysfunction in hypertension has been associated with altered brain stem control of sympathetic outflow from the central nervous system to the periphery [128, 129], as well as increased sympathetic activation via the stellate ganglia [130, 131] and the kidneys [132–134]. Increased renal sympathetic nerve activity results in renal vasoconstriction, thereby decreasing glomerular filtration rate, increasing renal reabsorption of sodium and water, and increasing renal release of renin and norepinephrine, thus promoting increases in arterial pressure and further augmenting sympathoexcitation [132].

In the spontaneously hypertensive rat (SHR), stellate ganglion neurons exhibit greater depolarization-induced calcium transients compared with wild-type control animals [131, 135], which could lead to greater release of NE. At the level of the heart, reductions in presynaptic  $\alpha$ -2 receptors on sympathetic nerves alleviate presynaptic negative feedback, resulting in greater release of NE from these nerve terminals [136]. Lastly a reduction in NE reuptake by the presynaptic NE transporters in the SHR model has been observed (similar to heart failure), further increasing the amount of NE that is available to bind to postsynaptic receptors [137] and further increasing cardiac sympathoexcitation [131].

Chronic uncontrolled hypertension eventually results in left ventricular hypertrophy in both animal models and patients, which predisposes to heart failure [138, 139]. The chronic state of sympathoexcitation can also lead to desensitization of adenylyl cyclase, resulting in contractile dysfunction and further exacerbation of heart failure [138]. Desensitization of adenylyl cyclase could result from downregulation of beta-adrenergic receptors and/or an increase in Gi protein  $\alpha$ -subunits; the latter has been observed in hypertrophied human myocardium from hypertensive patients [140].

Although calcium channel blockers, angiotensin-converting enzyme inhibitors (ACEI), and aldosterone receptor blockers (ARBs) have been demonstrated to be more effective pharmacological therapies in reducing blood pressure [141], beta-blocker therapy has been shown to reduce renin and angiotensin II levels [142], highlighting a beneficial adjuvant role for beta-blockers in pharmacological treatment of hypertension.



## Cardiac amyloidosis

Cardiac amyloidosis is a progressive disease that results in a restrictive cardiomyopathy and heart failure. The continuous extracellular deposition of either amyloid light chains (AL) or amyloid transthyretin (ATTR) can result from different etiologies, including genetic mutations, multiple myeloma, or age [143]. Regardless of the etiology, cardiac interstitial infiltration results in ventricular wall thickening, stiffness, and diastolic dysfunction [144]. In addition, amyloid deposits in nerves, leading to neuronal death throughout the body, including in the sympathetic ganglia and vagus nerve [145, 146]. Consequently, cardiac autonomic balance becomes disrupted due to cardiac denervation of both sympathetic and parasympathetic fibers, resulting in depressed heart rate variability and impaired baroreflex sensitivity [147, 148]. Clinically, Holter monitoring, HRV, and heart rate turbulence (HRT) have demonstrated that the degree of autonomic dysfunction in these patients negatively correlates with survival [149–151]. Treatment of cardiac amyloidosis relies on treating the underlying cause (e.g., chemotherapy in case of multiple myeloma, and/or pharmacological treatment with transthyretin stabilizers). Currently, tafamidis is the only Food and Drug Administration-approved transthyretin stabilizer for ATTR cardiac amyloidosis [152]. Compared with placebo, treatment with tafamidis has been associated with reductions in all-cause mortality, cardiovascular-related hospitalizations, and reduced decline in quality of life [153]. However, the effects of tafamidis on cardiac autonomic remodeling are yet to be determined. Novel therapies that might become implemented in clinical practice in the near future include transthyretin gene silencing agents and anti-transthyretin antibodies [154]. The efficacy of these drugs on restoring cardiac autonomic balance has yet to be established.

Patients suffering from cardiac amyloidosis should also receive pharmacological treatment for heart failure symptoms. Notably, beta-blockers and inhibitors of the renin–angiotensin–aldosterone system, though standard of care for other etiologies of heart failure, are generally poorly tolerated in this setting, and calcium channel blockers are contraindicated [148]. Moreover, even though the incidence of sudden cardiac death in patients with cardiac amyloidosis is high, internal cardiac defibrillators have failed to show a benefit in this patient population [148, 155, 156].

## Takotsubo cardiomyopathy

Takotsubo cardiomyopathy is an acute cardiac syndrome, most frequently seen in postmenopausal women [157]. Its clinical presentation is similar to that of an acute myocardial infarction, often presenting with chest pain, ST-segment deviations on the surface electrogram, and elevated plasma

troponins [158, 159]. However, rather than coronary artery disease, acute heart failure resulting from left ventricular apical and/or mid-ventricular wall motion abnormalities underlie this acute presentation [158, 159]. Central to the pathophysiology of Takotsubo cardiomyopathy are elevated catecholamines [160, 161], triggered by either emotional (primary Takotsubo cardiomyopathy) or physical illness/trauma (secondary Takotsubo cardiomyopathy) [158, 159, 162]. These elevated catecholamine levels, subsequently, induce myocardial stunning, resulting in the characteristic apical ballooning during systole that is observed by echocardiography [159].

Several processes are likely to underlie this pathophysiology, including catecholamine induced microvascular dysfunction and coronary artery spasm [163, 164], as well as direct cardiac effects of catecholamines on ventricular myocytes [165, 166], inducing calcium overload, mitochondrial dysfunction, and reactive oxygen species production, among other effects. Moreover, using an induced pluripotent stem-cell cardiomyocyte model, the myocytes from Takotsubo cardiomyopathy patients were found to have increased sensitivity to beta-1 receptor stimulation compared with healthy age-matched controls [167]. Correspondingly, Vaccaro et al. [168] observed an increase in spontaneous sympathetic nerve activity (as measured via microneurography) and decreased spontaneous baroreflex control in patients suffering from with Takotsubo cardiomyopathy. Finally, HRV measurements are significantly depressed (i.e., representative of greater sympathetic tone) in patients with acute Takotsubo syndrome [169, 170].

In approximately 95% of Takotsubo cardiomyopathy patients, left ventricular ejection fraction makes a full recovery within several weeks. However, a few studies have suggested that long-term mortality and morbidity rates may be similar to patients that suffer from an acute myocardial infarction [171, 172]. Correspondingly, Norcliffe-Kaufmann et al. [173] found that patients who had a history of Takotsubo cardiomyopathy had exaggerated sympathetic and decreased parasympathetic responses during baroreflex testing (Valsalva maneuver and tilt testing, respectively) [173]. This data suggests that, even after functional hemodynamic recovery of Takotsubo cardiomyopathy, autonomic dysfunction persists.

There are no randomized clinical trials that have evaluated optimal medical therapies in patients suffering from either acute or long-term Takotsubo cardiomyopathy. The major objective for treatment of Takotsubo cardiomyopathy in the acute phase appears to be hemodynamic support, in which mechanical support can be considered in patients with progressive circulatory failure and cardiogenic shock [174]. In patients with a left ventricular ejection fraction of <40%, ACEI, ARBs, and beta-blockers should be administered, though in case of left ventricular outflow tract obstruction,

inotropes should not be used [174]. There appears to be no clear consensus on the usage of these drugs long-term. Whereas some studies suggest that ACEI and ARBs reduce the risk of Takotsubo cardiomyopathy recurrence (while beta-blockers do not), other studies suggest that none of these therapies reduce the risk of recurrence [175–177]. Additional studies are, therefore, needed to better understand the role of these medications in the chronic treatment of Takotsubo cardiomyopathy.

### Long QT syndrome

Various congenital mutations have been identified to result in long QT syndromes (LQTS), generally characterized by prolonged repolarization duration and increased susceptibility to sudden cardiac death [178–180]. LQTS1, LQTS2, and LQTS3, with their respective mutations in *KCNQ1*, *HERG* and *SCN5A*, account for the large majority of LQTS cases [181].

Sympathoexcitation, induced by physiological or physical stress, is a notorious cause of ventricular arrhythmias in patients with LQTS1 and LQTS2 [182]. Whereas sustained sympathetic activation promotes ventricular arrhythmias in LQTS1, ventricular arrhythmias in LQTS2 are induced by a sudden increase in sympathetic tone [183, 184]. In contrast to LQTS1 and LQTS2, ventricular arrhythmias in LQTS3 occur in the setting of decreased sympathetic activity (e.g., during sleep) [184].

In a background of prolonged repolarization, an increase in sympathetic tone predisposes to early afterdepolarizations, whilst also increasing repolarization heterogeneity and, thereby, reinforcing the arrhythmogenic substrate [182]. In LQTS1, sympathetically induced increases in depolarization current are insufficiently counterbalanced by repolarization currents, resulting in a paradoxical increase in action potential duration [184]. This effect is clinically replicated through exercise or epinephrine infusion, both resulting in a prolonged QT interval as well as increased spatial dispersion of repolarization (reflected in greater T-peak to T-end intervals) [185–189]. In LQTS2 repolarization is similarly hampered during sympathoexcitation. However, the subsequent prolongation of repolarization is only transient, as intact  $IK_s$  counterbalances the increased depolarization currents [184]. Similar to LQTS1, sympathetic stimulation will also increase spatial dispersion of repolarization, but this effect is also temporary [184]. Clinically, exercise testing and epinephrine infusion corroborate this transient effect of sympathetic activation in LQTS2 [185, 188, 190, 191].

In addition to the increased susceptibility to arrhythmias in the setting of sympathoexcitation, Rizzo et al. [192] observed inflammatory changes in the stellate ganglia of LQTS patients (including LQTS1 and LQTS2), who required cardiac sympathetic denervation for control

of refractory ventricular arrhythmias. It is possible that this T-cell mediated neurotoxicity in the stellate ganglia disrupts cardiac sympathetic innervation and tone, which can further augment electrical instabilities during sympathetic stimulation. Correspondingly, metaiodobenzylguanidine (MIBG) studies on LQTS patients show an overall decrease in sympathetic nerve terminals, combined with heterogeneous patterns of cardiac sympathetic innervation, which could further augment the arrhythmogenic substrate [193, 194].

Due to the clear role of the sympathetic nervous system in ventricular arrhythmogenesis in LQTS1 and LQTS2, sympathetic blockade with beta-blocker therapy (i.e., nadolol or propranolol) remains the cornerstone of treatment in these patients [195–200]. However, in patients in which beta-blockers are contraindicated or who suffer from a high arrhythmia burden despite optimal pharmacological treatment, left cardiac sympathetic denervation (CSD) has been proven to be an effective anti-arrhythmic treatment [180, 199, 201–205].

### Catecholaminergic polymorphic ventricular arrhythmia

Catecholaminergic polymorphic ventricular arrhythmia (CPVT) is inherited arrhythmia syndrome that results most commonly from mutations in *RYR2* or *CASQ2* genes [206–209], causing cellular calcium mishandling. The consequent calcium overload in the sarcoplasmic reticulum and spontaneous calcium release predispose to delayed afterdepolarizations, which can trigger arrhythmias [210–212]. Hence, in a background of sympathoexcitation (e.g., during episodes of physical or physiological stress), calcium handling becomes further disturbed, increasing the susceptibility for both the arrhythmic triggers and the arrhythmic substrate [213, 214]. Moreover, similar to the aforementioned phenotype of chronic ganglionitis in LQTS patients, similar T-cell infiltration has been observed in the stellate ganglia of CPVT patients [192]. Beta-blockers (preferably nadolol) are the first line of therapy for CPVT treatment, possibly in combination with flecainide [215, 216]. The anti-arrhythmic mechanism of flecainide has been studied in CPVT mouse models and shown to inhibit RYR2-mediated calcium release and/or reduce sodium channel availability, thereby increasing the threshold for triggered activity [217, 218]. Similarly, CPVT patients experienced less exercise-induced ventricular arrhythmias while using flecainide, and combined beta-blocker and flecainide therapy were proven to be superior to treatment with beta-blockers alone [216, 219]. In patients in whom pharmacological treatment is not tolerated or insufficiently suppresses arrhythmia episodes, left CSD is a recommended therapeutic option [213, 220, 221].

## Clinical parameters of autonomic dysfunction and evidence for neuromodulatory therapies for ventricular arrhythmias and heart failure

Despite the rapid increase in our understanding of cardiac autonomic function in health and disease, much of these potential prognostic parameters are yet to be used consistently at the bedside, and many neuromodulatory therapies have yet to reach patients. Therefore, the remainder of this review will focus on parameters and treatment modalities that are available for clinical implementation.

### Clinical parameters of autonomic (dys)function

#### Plasma levels of norepinephrine and neuropeptide Y

An accessible method for assessing autonomic dysfunction and sympathoexcitation is measurement of plasma NE and NPY levels. Greater NE levels are associated with increased cardiac symptoms and mortality in heart failure and after myocardial infarction, though not LV dysfunction [78, 79, 222]. It is important to note that plasma NE levels reflect not only NE released by the sympathetic nerve terminals but also renal NE spillover.

Similarly, elevated NPY levels are associated with increased severity and mortality in [223] as well as greater susceptibility to ventricular arrhythmias following myocardial infarction [81, 82]. Though easily accessible and relatively noninvasive, a major drawback of NE and NPY level measurement is that they can be influenced by acute and relatively minor changes in autonomic tone.

#### Heart rate variability

Heart rate variability (HRV) is a noninvasive measure of cardiac autonomic tone that quantifies the beat-to-beat changes in RR intervals, thereby reflecting the relative sympathetic and parasympathetic tone at the level of the sinus node [224]. It can be measured from recordings spanning from minutes to 24 h, though physiological interpretations of the results vary with different recording lengths [225].

Currently, 24-h recordings are often regarded as the “gold standard,” since they were demonstrated to have better predictive power than short-term recordings [226, 227].

HRV can be measured in the time or frequency domain. Temporal indices quantify the extent of beat-to-beat RR interval variability. Of the various measures, the standard deviation of consecutive RR interval [excluding premature ventricular contractions (PVCs); the standard deviation of NN intervals (SDNN)] is most often measured (Fig. 2).

Lower SDNN corresponds with increased cardiac morbidity and mortality in heart failure patients [228, 229], and is currently considered the “gold standard” HRV parameter [224].

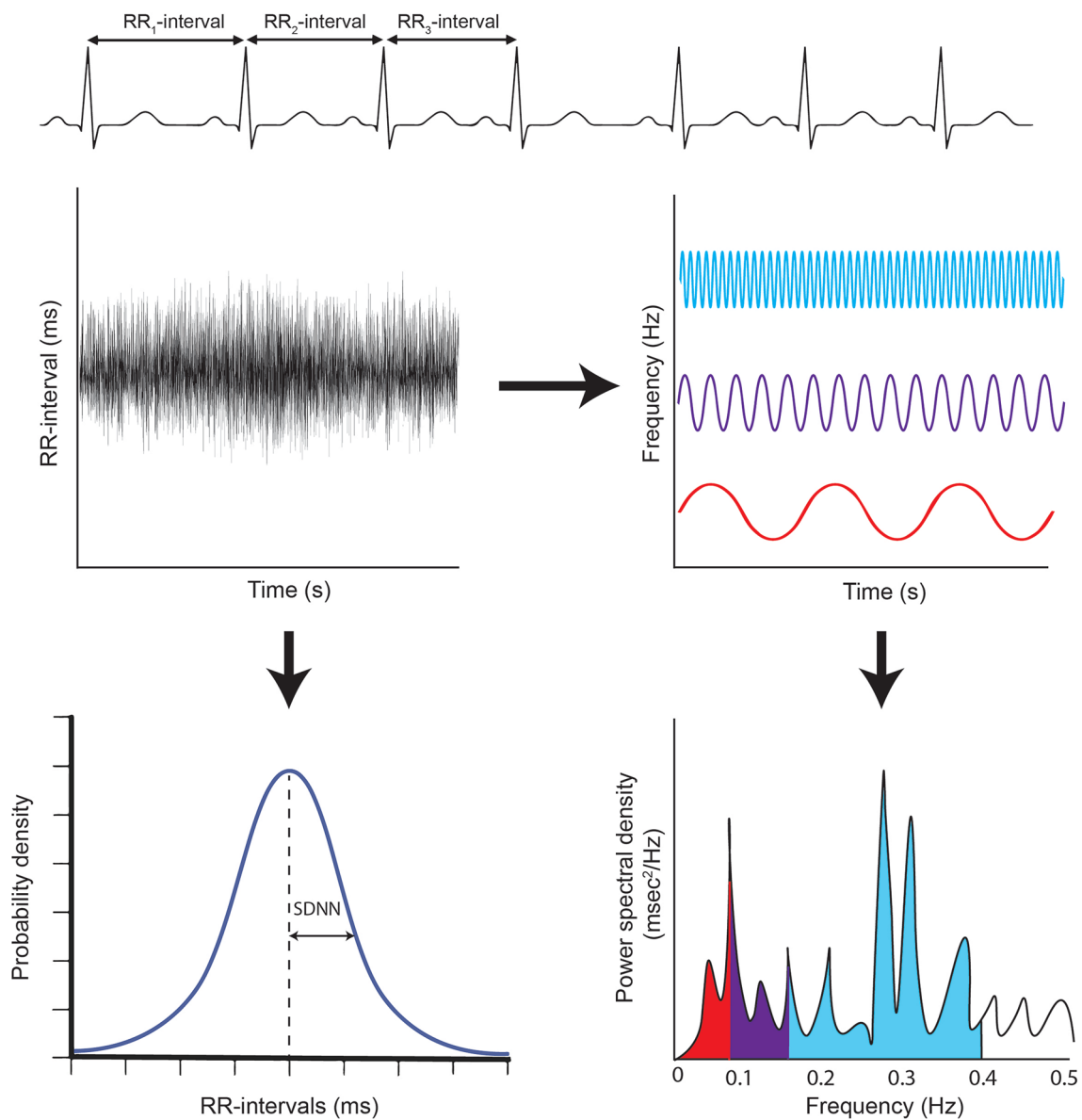
Heart rate fluctuates at different frequencies. Frequency domain indices result from a power spectral analysis of consecutive RR intervals [225, 230], and quantify the extent to which different frequencies are present in heart rate fluctuations (Fig. 2). In general, oscillations are divided into different frequency ranges: high frequency (HF: 0.15–0.4 Hz), low frequency (LF: 0.05–0.15 Hz), very low frequency (VLF: 0.0033–0.04 Hz), or ultra-low frequency (ULF:  $\leq 0.0033$  Hz) [225, 230].

Of these frequencies, VLF is most strongly associated with all-cause mortality and incidence of arrhythmias [231, 232]. Interestingly, rather than reflecting efferent innervation, VLF appears to reflect the frequency at which cardiac afferent nerves are stimulated. This, therefore, suggests that VLF more closely reflects the cardiac state, rather than the provoked response [233, 234]. Nevertheless, out of the different spectral measurements, LF, HF, and LF:HF ratio are most often reported. While LF is often considered a reflection of sympathetic tone, it predominantly reflects baroreflex modulation of cardiac autonomic outflow [230, 235, 236]. HF oscillations, on the other hand, reflect respiration-driven vagal control of heart rate, also known as the respiratory sinus arrhythmia [230, 237]. LF:HF power/ratio is therefore not a pure reflection of sympathovagal balance and should be interpreted with caution [230, 238].

#### Baroreflex sensitivity

The baroreflex serves to regulate mean arterial pressure, and therefore, safeguards proper perfusion of vital organs. Cardiovascular baroreceptors are primarily found in the carotid artery sinuses and aortic arch and relay information about vascular stretch to the CNS [239]. Higher arterial pressures, which cause more stretch of the vascular wall, increase firing rate of these sensory afferent neurons, which activate glutamatergic neurons in the NTS [239, 240]. These neurons excite second-order neurons in the caudal ventrolateral medulla, which in turn release GABA, thereby inhibiting neurons in the RVLM. As central sympathetic outflow is partially derived from the RVLM, this inhibition decreases sympathetic outflow and, as a result, decreases heart rate, contractility, and blood pressure. In the setting of low blood pressures, inhibition of the neurons in the RVLM is relieved, allowing for higher central sympathetic outflow, resulting in a reflexive increase in heart rate [239, 240].

Quantification of this change in heart rate in response to an increase or decrease in blood pressure may be reflective of autonomic (dys)function. Baroreflex sensitivity (BRS), measured as the change in the RR interval per mmHg change in blood pressure, is often assessed using



**Fig. 2** Heart rate variability measures in the time and frequency domain. Heart rate variability is a measure of the beat-to-beat variability in the RR interval. Temporal domain indices, such as SDNN, quantify the extent of beat-to-beat RR-interval variability over time. SDNN reflects the standard deviation of consecutive RR intervals.

pharmacologic interventions with phenylephrine (vasoconstrictor) or sodium nitroprusside (vasodilator). As such, depending on the type of drug used, the sympathetic or parasympathetic baroreflex is tested [241]. Baroreflex can also be measured noninvasively, using finger arterial pressure measurements combined with an ECG. However, these spontaneous measurements do not correspond well with invasive measurements of BRS and have been found to be significantly inferior [241]. Alternative noninvasive methods to quantify BRS utilize neck suction/pressure or

Frequency domain analyses quantify the extent to which different frequencies are present in RR-interval oscillations as the power of a frequency. The different frequencies are reflective of sympathetic, parasympathetic, and/or autonomic reflex loops and, therefore, represent cardiac autonomic input

the Valsalva maneuver for activation of baroreceptors. The various methods of BRS assessment and their respective advantages and disadvantages are described in detail by La Rovere et al. [241].

Autonomic dysfunction, especially parasympathetic withdrawal in cardiovascular diseases, decreases BRS. Correspondingly, a lower BRS correlates with higher cardiovascular mortality and an increased susceptibility to ventricular arrhythmias after myocardial infarction [242] and in heart failure patients [243–245].



## Heart rate turbulence

Heart rate turbulence (HRT) assesses the sequence of autonomic responses to a PVC [246]. During a PVC and the subsequent compensatory pause, less blood is ejected from the heart, causing a decrease in blood pressure. This is sensed via autonomic neurons mediating the baroreflex, which then increase their firing (early acceleration phase). This causes the blood pressure to “overshoot” and reach a higher level than before the PVC, which is subsequently sensed by the autonomic nervous system, inducing a deceleration in heart rate (late deceleration phase). This consecutive acceleration and deceleration of heart rate is quantified as the turbulence onset (TO) and the turbulence slope (TS). TO quantifies the percentage change in heart rate directly after the compensatory pause versus before the PVC. TS, on the other hand, is the maximum regression slope of the late deceleration phase (quantified using at least five consecutive RR intervals) [246]. Clinically, this measure can be extracted from Holter recordings, or be obtained through pacing-induced PVCs at 60–70% of sinus rate cycle length.

HRT has been demonstrated to be an independent predictor of cardiovascular death after myocardial infarction, as well as in congestive heart failure and idiopathic dilated cardiomyopathy [246–248]. Unfortunately, it has low sensitivity (approximately 30%), and its reliability is highly influenced by the baseline heart rate (worse with higher heart rates) [246].

## Imaging modalities

Neuroimaging is a diagnostic tool that visualizes cardiac innervation. The most commonly used compound is metaiodobenzylguanidine (MIBG), a guanethidine derivative, that, upon intravenous administration, is taken up into the sympathetic nerve terminals through similar mechanisms as NE [249]. Following its endocytosis, MIBG is neither metabolized nor catabolized, and thus, accumulates intracellularly. Leveraging these properties, MIBG can be radiolabeled with a marker such as  $^{123}\text{I}$ , thereby allowing for visualization and quantification of cardiac sympathetic nerve density and neurotransmitter reuptake. As autonomic remodeling results in less NE reuptake, more MIBG will be washed out over time. This phenomenon is quantified as the heart:mediastinum ratio (H:M). The AdreView Myocardial Imaging for Risk Evaluation in Heart Failure (ADMIRE-HF) trial assessed the utility of MIBG scintigraphy in identifying heart failure patients at increased risk for sudden cardiac death (SCD). It demonstrated that a lower H/M ratio ( $< 1.6$ ) significantly correlated with a higher risk of SCD [250]. Similarly, a higher H:M ratio corresponded to higher survival rates in heart failure patients [251–253]. Major limitations of this method, however, include the low spatial resolution and the

dependency of the image quality on the collimator that is being used [254].

Alternative imaging compounds using positron emission tomography with NE analogs have been developed, including  $^{11}\text{C}$ -hydroxyephedrine. In comparison to  $^{123}\text{I}$ -mIBG, the affinity of  $^{11}\text{C}$ -hydroxyephedrine for the norepinephrine transporter is higher, allowing for better differentiation between innervated and denervated myocardium [107, 255]. Correspondingly, positron emission photography using  $^{11}\text{C}$ -hydroxyephedrine has been proven to adequately assess the extent of cardiac sympathetic denervation and identify patients that may be at increased risk of ventricular arrhythmias and sudden cardiac death [107]. A major difference between MIBG and  $^{11}\text{C}$ -hydroxyephedrine is the imaging technique employed to visualize the compound. Whereas MIBG uses single photon emission computed tomography (SPECT),  $^{11}\text{C}$ -hydroxyephedrine relies on positron emission tomography, which is less widely available.

## Treatment strategies targeting the autonomic nervous system in heart failure with reduced ejection fraction and ventricular arrhythmias

**Beta-blockers** Beta-blockers remain the corner stone of cardiovascular treatment after myocardial injury, as they improve cardiac function in heart failure, reduce ventricular arrhythmia susceptibility, and decrease mortality [256, 257]. In the setting of heart failure, bisoprolol, metoprolol, and carvedilol have been best evaluated, reducing mortality on average by 35% [257–260].

Even though all beta-blockers impede sympathetic activity via blockade of beta-adrenergic receptors on the heart, understanding the characteristics of different beta-blockers can aid in selecting the best one in a specific situation. One of the major differences between different types of beta-blockers is their specificity for the beta-1 receptor. The first generation of beta-blockers was in general nonselective for beta-1 or beta-2 receptors, whereas second generation beta-blockers are specific for beta-1 receptors (Table 2).

Third generation beta-blockers have additional vasodilatory effects through alpha-receptor blockade or nitric oxide release (Table 2) [261]. These drugs, therefore, also lower peripheral vascular resistance and systemic blood pressure. Moreover, some beta-blockers have intrinsic sympathomimetic properties. These drugs can lower systemic blood pressure, without affecting heart rate and cardiac output. Therefore, these may be more suitable in situations such as sinus bradycardia and/or sick sinus syndrome [262].

Beta-blockers are known to cause several adverse effects due to off-target binding in the CNS, which reduces patient compliance. These included fatigue, reduced ability to concentrate, nightmares, and/or depression [263]. Lipophilicity of a drug (which corresponds to its ability to cross the



**Table 2** Commonly used beta-blockers and their characteristics

Beta-blocker	Generation	$\beta_1$ -selective	$\alpha$ -block	ISA	Half-life (hours)	Lipophilic
Carteolol	1	No		+	6–8	
Nadolol	1	No			12–24	
Penbutolol	1	No		+	18–27	++
Pindolol	1	No		++	3–4	++
Propranolol	1	No			3–4	++
Sotalol	1	No			12	
Timolol	1	No			4–5	++
Acebutolol	2	Yes		+	3–4	+
Atenolol	2	Yes			6–9	
Betaxolol	2	Yes			14–22	+
Bisoprolol	2	Yes			9–12	+
Esmolol	2	Yes			9 min	
Metoprolol	2	Yes			3–4	+
Carvedilol	3	No	+		7–10	+
Celiprolol	3	Yes	+	+	4–5	
Labetalol	3	No	+		3–4	
Nebivolol	3	Yes	+(NO)		8–27	+

NO: vasodilatory effect through increased nitric oxide. ISA: intrinsic sympathomimetic activity

+: Moderate; ++: High

blood–brain barrier) should be considered when deciding an appropriate alternative (Table 2).

**Renin–angiotensin–aldosterone system inhibitors** Decreased cardiac output also stimulates the release of renin by the kidneys, which subsequently leads to increases in angiotensin I and II as well as aldosterone. This systemic activation of the renin–angiotensin–aldosterone system (RAAS) further exacerbates heart failure and sympathovagal balance, but may also have direct effects on autonomic dysfunction.

Angiotensin II heightens sympathetic tone by binding to presynaptic angiotensin I receptors on sympathetic neurons, facilitating NE release [264] and inhibiting norepinephrine reuptake [265]. Moreover, angiotensin II blunts the baroreflex, most likely via reducing cardiac vagal tone [266, 267]. Additionally, CSAR is increased by increases in central angiotensin II receptors [268, 269], which can be inhibited by angiotensin I receptor antagonist losartan [270]. Hence, angiotensin-converting enzyme inhibitors, angiotensin receptor blockers, and mineralocorticoid receptor antagonists have been demonstrated to decrease plasma NE levels, improve cardiac autonomic tone as measured by  $^{123}\text{I}$ -mIBG, and improve BRS [271–274].

Similarly, angiotensin receptor–neprilysin inhibitors (ARNIs) improve outcomes in heart failure patients, reverse cardiac remodeling, and decrease the incidence of ventricular arrhythmias and sudden cardiac death [275]. Interestingly, a more recent study has linked these effects in part to restoration of parasympathetic tone and sympathovagal

balance [276], though additional studies are needed to dissect the effects of ARNIs on vagal function.

**Sodium–glucose cotransporter 2 inhibitors** A more novel group of drugs for patients with heart failure and a reduced ejection fraction are the sodium–glucose cotransporter 2 (SGLT2) inhibitors [257]. Their principal mechanism of action is through increasing glucose excretion in urine, thereby, causing natriuresis and osmotic diuresis, which reduces plasma volume and blood pressure. Reducing volume overload on the heart might very well improve autonomic tone, though additional mechanisms may also be present. Various studies have shown the beneficial effects of SGLT2 inhibitors on autonomic tone [277, 278], including the EMBODY trial, which reported improved autonomic parameters measured by HRV (e.g., LF:HF ratio) in patients with type 2 diabetes on SGLT2 inhibitors, 4 weeks after acute myocardial infarction [279].

**Cardiac resynchronization therapy** Cardiac resynchronization therapy (CRT) has become an established non-pharmacological therapy in heart failure patients with reduced ejection fraction and ventricular dyssynchrony (predominantly in the setting of left bundle branch block), reducing mortality. Reversed autonomic remodeling has been observed after CRT [257]. Cha et al. [280] reported improved H:M ratio on MIBG in CRT responders after 6 months of treatment [280]. In addition, other studies have reported improved

HRV, HRT, and BRS in CRT responders compared with nonresponders or control groups [281–284].

**Cardiac sympathetic denervation** Cardiac sympathetic denervation (CSD) is a permanent therapeutic approach to interrupt cardiac sympathetic efferent and afferent neurotransmission at the level of the stellate and thoracic sympathetic ganglia. In most cases, CSD is performed by surgical excision of the lower half or third of the left or bilateral stellate and T2–T4 thoracic ganglia.

Thus far, CSD has been primarily performed and evaluated as a treatment option for recurrent and refractory ventricular arrhythmias, including in patients with channelopathies (long QT syndrome and catecholaminergic polymorphic VT) and cardiomyopathy/structural heart disease [204, 285–287]. Multiple preclinical and clinical studies as well as case series have demonstrated a robust anti-arrhythmic effect for both polymorphic and monomorphic VT [288]. Additionally, a small, randomized pilot study by Conceicao-Souza et al. [289] reported improvement in LVEF and decreased cardiac morbidity in patients with New York Heart Association (NYHA) Class II or III heart failure that underwent left CSD compared with optimal medical therapy alone.

Side effects of CSD are uncommon, but include (partial) Horner's syndrome, compensatory hyperhidrosis, and neuropathy/neuropathic pain [290, 291].

**Stellate ganglion block** Stellate ganglion block (SGB) also aims to interrupt cardiac sympathetic outflow at the level of the stellate ganglia with the use of anesthetic agents. Hence, its effects are temporary and reversible. The block can either be achieved as a single injection or through continuous infusion upon placement of a catheter [292, 293]. The duration of the block also depends on the half-life of the local anesthetic used, such as bupivacaine or lidocaine. SGB has been described in case series as a treatment modality for electrical storm [294, 295], allowing for acute stabilization of these patients. Its applicability to other settings has not been described.

**Thoracic epidural anesthesia** Thoracic epidural anesthesia (TEA) has also emerged as a promising and relatively noninvasive neuromodulatory approach that was reported to decrease ventricular arrhythmia burden in small case series of patients with structural heart disease and in animal models of myocardial infarction [296–298]. Administration of an anesthetic agent in the epidural space can block both spinal afferent and sympathetic efferent signals in a reversible fashion. TEA can acutely stabilize patients with recurrent VA, allowing these patients to be bridged to more permanent therapies such as CSD, catheter ablation, or cardiac transplantation [296, 297, 299]. Its broader applicability

has been limited by the need for interruption of blood thinners and its potentially unknown effects on hemodynamic parameters, as cardiac sympathetic outflow becomes significantly decreased. Additional preclinical and clinical studies are needed to shed light on the hemodynamic and electrophysiological effects of TEA in the setting of heart disease.

**Renal artery denervation** Both renal efferent and afferent nerves are involved in enhancing systemic sympathetic responses [300, 301]. Whereas the efferent nerves promote renal sodium reabsorption and activate the renin–angiotensin–aldosterone system, renal afferents relay their sensory information through dorsal root ganglia, increasing cardiovascular sympathetic tone [300, 301]. Disrupting this cycle by renal denervation and ablation of the renal nerves was first explored as a treatment for hypertension. Despite the promising results of the SYMPPLICITY HTN-1 and -2 trials [302, 303], the SYMPPLICITY HTN-3 clinical trial failed to show benefit in blood pressure regulation in the treatment arm compared with the control arm [304]. Since then, various randomized sham-controlled studies have demonstrated an overall benefit for renal nerve denervation as an antihypertensive treatment, though individual responses can still vary [305–307]. Recently, renal nerve stimulation has received increasing attention as a method of guiding adequate renal denervation [308, 309]. Renal nerve stimulation prior to ablation can help localize renal plexus; a mitigated increase in blood pressure response to stimulation post-denervation has been reported to positively correlate with long-term benefit of renal denervation [308, 309].

As autonomic dysfunction and increased sympathetic tone are cornerstones in the pathogenesis of ventricular arrhythmias, renal denervation has also been explored as an adjunctive therapeutic option for ventricular tachycardia [310]. In a canine study, bilateral renal denervation (both chemical and mechanical) after creation of myocardial infarction reduced ventricular fibrillation burden by stabilizing the electrical properties of infarct border zone [311]. Moreover, multiple case series have collectively suggested a benefit for renal denervation in patients with refractory ventricular arrhythmias [310], though randomized trials are lacking.

**Baroreflex stimulation** Baroreflex stimulation (BAT) involves implantation of a baroreflex stimulator in the carotid sinus, mimicking afferent signaling of increased vascular stretch and resulting in reduced central sympathetic and increased vagal outflow to the heart. Chronic bilateral baroreflex stimulation improved survival and restored autonomic tone in animal models of both ischemic and nonischemic heart failure [312, 313]. Since then, various studies have demonstrated improved morbidity and mortality in patients with advanced heart failure implanted with BAT. More specifically, BAT

improved NYHA class, quality of life, baroreflex sensitivity, and reversed left ventricular remodeling [314–317]. Notably, right-sided stimulation has been shown to cause more pronounced effects on blood pressure than left-sided stimulation or bilateral stimulation [318]. Baroreflex stimulation has been approved by the FDA in the treatment of heart failure patients (NYHA II or III) who remain symptomatic, have a left ventricular ejection fraction of 35% or lower and NT-proBNP levels below 1600 pg/mL despite optimal medical therapy, and are not eligible for CRT implantation [257].

**Vagal nerve stimulation** Vagal nerve stimulation (VNS) is another treatment modality currently under investigation for heart failure to increase parasympathetic outflow to the heart. Animal studies employing chronic VNS in canine models of heart failure demonstrated efficacy in improving left ventricular systolic function, decreasing plasma levels of heart failure biomarkers, and decreasing mortality [319–321]. Moreover, the first clinical trials in humans showed similar results, including improved left ventricular ejection fraction, quality of life, and NYHA class [322, 323]. However, subsequent larger, randomized, clinical trials failed to replicate these results and found no significant improvement in heart failure patients with or without VNS [324, 325]. The contradicting results in clinical benefit from VNS are largely attributed to differing stimulation parameters [326, 327], warranting further preclinical and clinical studies. Although heart failure has been the primary focus of VNS clinical trials, preclinical studies have also suggested benefit in reducing ventricular arrhythmia inducibility after chronic myocardial infarction [153].

## Conclusion

Autonomic dysfunction, characterized by excessive and deleterious activation of the sympathetic nervous system accompanied by parasympathetic withdrawal and dysfunction, is inherent to the pathophysiology of many cardiovascular diseases. Mechanistic gaps, especially related to causes of vagal dysfunction and specific mediators of chronic sympathetic activation, require further investigation. Improved diagnosis of the degree of autonomic dysfunction and assessment of the extent of sympathovagal imbalance can lead to initiation and implementation of better targeted, more personalized therapies and development of novel treatments that restore cardiac autonomic tone and improve survival for patients with cardiovascular disease.

**Funding** National Institute of Health, R01 HL148190, Marmar Vaseghi.

## References

1. Ardell JL, Armour JA (2016) Neurocardiology: structure-based function. *Compr Physiol* 6:1635–1653. <https://doi.org/10.1002/cphy.c150046>
2. Armour JA (2004) Cardiac neuronal hierarchy in health and disease. *Am J Physiol Regul Integr Comp Physiol* 287:R262–271. <https://doi.org/10.1152/ajpregu.00183.2004>
3. Armour JA, Huang MH, Pelleg A, Sylven C (1994) Responsiveness of in situ canine nodose ganglion afferent neurones to epicardial mechanical or chemical stimuli. *Cardiovasc Res* 28:1218–1225. <https://doi.org/10.1093/cvr/28.8.1218>
4. Du X, Hao H, Yang Y, Huang S, Wang C, Gigout S, Ramli R, Li X, Jaworska E, Edwards I, Deuchars J, Yanagawa Y, Qi J, Guan B, Jaffe DB, Zhang H, Gamper N (2017) Local GABAergic signaling within sensory ganglia controls peripheral nociceptive transmission. *J Clin Invest* 127:1741–1756. <https://doi.org/10.1172/JCI86812>
5. Hanack C, Moroni M, Lima WC, Wende H, Kirchner M, Adelfinger L, Schrenk-Siemens K, Tappe-Theodor A, Wetzel C, Kuich PH, Gassmann M, Roggenkamp D, Bettler B, Lewin GR, Selbach M, Siemens J (2015) GABA blocks pathological but not acute TRPV1 pain signals. *Cell* 160:759–770. <https://doi.org/10.1016/j.cell.2015.01.022>
6. Pagadala P, Park CK, Bang S, Xu ZZ, Xie RG, Liu T, Han BX, Tracey WD Jr, Wang F, Ji RR (2013) Loss of NR1 subunit of NMDARs in primary sensory neurons leads to hyperexcitability and pain hypersensitivity: involvement of Ca(2+)-activated small conductance potassium channels. *J Neurosci* 33:13425–13430. <https://doi.org/10.1523/JNEUROSCI.0454-13.2013>
7. Zhu Y, Lu SG, Gold MS (2012) Persistent inflammation increases GABA-induced depolarization of rat cutaneous dorsal root ganglion neurons in vitro. *Neuroscience* 220:330–340. <https://doi.org/10.1016/j.neuroscience.2012.06.025>
8. Janig W (2006) Integrative action of the autonomic nervous system: neurobiology of homeostasis. Cambridge University Press, Cambridge
9. Salavatian S, Hoang JD, Yamaguchi N, Lokhandwala ZA, Swid MA, Armour JA, Ardell JL, Vaseghi M (2022) Myocardial infarction reduces cardiac nociceptive neurotransmission through the vagal ganglia. *JCI Insight* 7:e155747. <https://doi.org/10.1172/jci.insight.155747>
10. Hopkins DA, Armour JA (1989) Ganglionic distribution of afferent neurons innervating the canine heart and cardiopulmonary nerves. *J Auton Nerv Syst* 26:213–222. [https://doi.org/10.1016/0165-1838\(89\)90170-7](https://doi.org/10.1016/0165-1838(89)90170-7)
11. Malliani A, Montano N (2002) Emerging excitatory role of cardiovascular sympathetic afferents in pathophysiological conditions. *Hypertension* 39:63–68. <https://doi.org/10.1161/hy0102.099200>
12. Wang HJ, Rozanski GJ, Zucker IH (2017) Cardiac sympathetic afferent reflex control of cardiac function in normal and chronic heart failure states. *J Physiol* 595:2519–2534. <https://doi.org/10.1113/JP273764>
13. Armour JA, Ardell JL (2004) Basic and clinical neurocardiology. Oxford University Press, New York
14. Chappleau MW, Hajduczuk G, Sharma RV, Wachtel RE, Cunningham JT, Sullivan MJ, Abboud FM (1995) Mechanisms of baroreceptor activation. *Clin Exp Hypertens* 17:1–13. <https://doi.org/10.3109/10641969509087050>
15. Kirchheim HR (1976) Systemic arterial baroreceptor reflexes. *Physiol Rev* 56:100–177. <https://doi.org/10.1152/physrev.1976.56.1.100>

16. Guyenet PG (2014) Regulation of breathing and autonomic outflows by chemoreceptors. *Compr Physiol* 4:1511–1562. <https://doi.org/10.1002/cphy.c140004>
17. Kumar P, Prabhakar NR (2012) Peripheral chemoreceptors: function and plasticity of the carotid body. *Compr Physiol* 2:141–219. <https://doi.org/10.1002/cphy.c100069>
18. Schultz HD, Marcus NJ, Del Rio R (2015) Role of the carotid body chemoreflex in the pathophysiology of heart failure: a perspective from animal studies. *Adv Exp Med Biol* 860:167–185. [https://doi.org/10.1007/978-3-319-18440-1\\_19](https://doi.org/10.1007/978-3-319-18440-1_19)
19. Bosnjak ZJ, Kampine JP (1989) Cardiac sympathetic afferent cell bodies are located in the peripheral nervous system of the cat. *Circ Res* 64:554–562. <https://doi.org/10.1161/01.res.64.3.554>
20. Kirchberber MA, Tada M, Katz AM (1975) Phospholamban: a regulatory protein of the cardiac sarcoplasmic reticulum. *Recent Adv Stud Cardiac Struct Metab* 5:103–115
21. Nattel S (2002) New ideas about atrial fibrillation 50 years on. *Nature* 415:219–226. <https://doi.org/10.1038/415219a>
22. Shannon TR, Ginsburg KS, Bers DM (2000) Potentiation of fractional sarcoplasmic reticulum calcium release by total and free intra-sarcoplasmic reticulum calcium concentration. *Biophys J* 78:334–343. [https://doi.org/10.1016/S0006-3495\(00\)76596-9](https://doi.org/10.1016/S0006-3495(00)76596-9)
23. Viatchenko-Karpinski S, Gyorke S (2001) Modulation of the Ca(2+)-induced Ca(2+) release cascade by beta-adrenergic stimulation in rat ventricular myocytes. *J Physiol* 533:837–848. <https://doi.org/10.1111/j.1469-7793.2001.t01-1-00837.x>
24. Bucchi A, Baruscotti M, Robinson RB, DiFrancesco D (2007) Modulation of rate by autonomic agonists in SAN cells involves changes in diastolic depolarization and the pacemaker current. *J Mol Cell Cardiol* 43:39–48. <https://doi.org/10.1016/j.yjmcc.2007.04.017>
25. Bogdanov KY, Maltsev VA, Vinogradova TM, Lyashkov AE, Spurgeon HA, Stern MD, Lakatta EG (2006) Membrane potential fluctuations resulting from submembrane Ca<sup>2+</sup> releases in rabbit sinoatrial nodal cells impart an exponential phase to the late diastolic depolarization that controls their chronotropic state. *Circ Res* 99:979–987. <https://doi.org/10.1161/01.RES.0000247933.66532.0b>
26. Lakatta EG, Maltsev VA, Vinogradova TM (2010) A coupled SYSTEM of intracellular Ca<sup>2+</sup> clocks and surface membrane voltage clocks controls the timekeeping mechanism of the heart's pacemaker. *Circ Res* 106:659–673. <https://doi.org/10.1161/CIRCRESAHA.109.206078>
27. Vinogradova TM, Lyashkov AE, Zhu W, Ruknudin AM, Sirenko S, Yang D, Deo S, Barlow M, Johnson S, Caffrey JL, Zhou YY, Xiao RP, Cheng H, Stern MD, Maltsev VA, Lakatta EG (2006) High basal protein kinase A-dependent phosphorylation drives rhythmic internal Ca<sup>2+</sup> store oscillations and spontaneous beating of cardiac pacemaker cells. *Circ Res* 98:505–514. <https://doi.org/10.1161/01.RES.0000204575.94040.d1>
28. Li L, Desantiago J, Chu G, Kranias EG, Bers DM (2000) Phosphorylation of phospholamban and troponin I in beta-adrenergic-induced acceleration of cardiac relaxation. *Am J Physiol Heart Circ Physiol* 278:H769–779. <https://doi.org/10.1152/ajpheart.2000.278.3.H769>
29. Kentish JC, McCloskey DT, Layland J, Palmer S, Leiden JM, Martin AF, Solaro RJ (2001) Phosphorylation of troponin I by protein kinase A accelerates relaxation and crossbridge cycle kinetics in mouse ventricular muscle. *Circ Res* 88:1059–1065. <https://doi.org/10.1161/hh1001.091640>
30. Marx SO, Kurokawa J, Reiken S, Motoike H, D'Armiento J, Marks AR, Kass RS (2002) Requirement of a macromolecular signaling complex for beta-adrenergic receptor modulation of the KCNQ1-KCNE1 potassium channel. *Science* 295:496–499. <https://doi.org/10.1126/science.1066843>
31. Chiamvimonvat N, Chen-Izu Y, Clancy CE, Deschenes I, Dobrev D, Heijman J, Izu L, Qu Z, Ripplinger CM, Vandenberg JJ, Weiss JN, Koren G, Banyasz T, Grandi E, Sanguinetti MC, Bers DM, Nerbonne JM (2017) Potassium currents in the heart: functional roles in repolarization, arrhythmia and therapeutics. *J Physiol* 595:2229–2252. <https://doi.org/10.1113/JP272883>
32. Burnstock G (2009) Autonomic neurotransmission: 60 years since sir Henry Dale. *Annu Rev Pharmacol Toxicol* 49:1–30. <https://doi.org/10.1146/annurev.pharmtox.052808.102215>
33. Herring N, Cranley J, Lokale MN, Li D, Shanks J, Alston EN, Girard BM, Carter E, Parsons RL, Habecker BA, Paterson DJ (2012) The cardiac sympathetic co-transmitter galanin reduces acetylcholine release and vagal bradycardia: implications for neural control of cardiac excitability. *J Mol Cell Cardiol* 52:667–676. <https://doi.org/10.1016/j.yjmcc.2011.11.016>
34. Heredia Mdel P, Delgado C, Pereira L, Perrier R, Richard S, Vassort G, Benitah JP, Gomez AM (2005) Neuropeptide Y rapidly enhances [Ca<sup>2+</sup>]<sub>i</sub> transients and Ca<sup>2+</sup> sparks in adult rat ventricular myocytes through Y1 receptor and PLC activation. *J Mol Cell Cardiol* 38:205–212. <https://doi.org/10.1016/j.yjmcc.2004.11.001>
35. Hoang JD, Salavatian S, Yamaguchi N, Swid MA, David H, Vaseghi M (2020) Cardiac sympathetic activation circumvents high-dose beta blocker therapy in part through release of neuropeptide Y. *JCI Insight* 5:e135519. <https://doi.org/10.1172/jci.insight.135519>
36. Herring N, Lokale MN, Danson EJ, Heaton DA, Paterson DJ (2008) Neuropeptide Y reduces acetylcholine release and vagal bradycardia via a Y2 receptor-mediated, protein kinase C-dependent pathway. *J Mol Cell Cardiol* 44:477–485. <https://doi.org/10.1016/j.yjmcc.2007.10.001>
37. Ophof T, Misier AR, Coronel R, Vermeulen JT, Verberne HJ, Frank RG, Moolijn AC, van Capelle FJ, Janse MJ (1991) Dispersion of refractoriness in canine ventricular myocardium. Effects of sympathetic stimulation. *Circ Res* 68:1204–1215. <https://doi.org/10.1161/01.res.68.5.1204>
38. Yanowitz F, Preston JB, Abildskov JA (1966) Functional distribution of right and left stellate innervation to the ventricles. Production of neurogenic electrocardiographic changes by unilateral alteration of sympathetic tone. *Circ Res* 18:416–428. <https://doi.org/10.1161/01.res.18.4.416>
39. Cinca J, Evangelista A, Montoyo J, Barutell C, Figueras J, Valle V, Rius J, Soler-Soler J (1985) Electrophysiologic effects of unilateral right and left stellate ganglion block on the human heart. *Am Heart J* 109:46–54. [https://doi.org/10.1016/0002-8703\(85\)90414-4](https://doi.org/10.1016/0002-8703(85)90414-4)
40. Rogers MC, Battit G, McPeck B, Todd D (1978) Lateralization of sympathetic control of the human sinus node: ECG changes of stellate ganglion block. *Anesthesiology* 48:139–141. <https://doi.org/10.1097/0000542-197802000-00009>
41. Schlack W, Thamer V (1996) Unilateral changes of sympathetic tone to the heart impair left ventricular function. *Acta Anaesthesiol Scand* 40:262–271. <https://doi.org/10.1111/j.1399-6576.1996.tb04430.x>
42. Vaseghi M, Zhou W, Shi J, Ajijola OA, Hadaya J, Shivkumar K, Mahajan A (2012) Sympathetic innervation of the anterior left ventricular wall by the right and left stellate ganglia. *Heart Rhythm* 9:1303–1309. <https://doi.org/10.1016/j.hrthm.2012.03.052>
43. Armour JA (2008) Potential clinical relevance of the 'little brain' on the mammalian heart. *Exp Physiol* 93:165–176. <https://doi.org/10.1113/expphysiol.2007.041178>
44. Agostoni E, Chinnock JE, De Daly MB, Murray JG (1957) Functional and histological studies of the vagus nerve and its branches to the heart, lungs and abdominal viscera in the cat. *J Physiol* 135:182–205. <https://doi.org/10.1113/jphysiol.1957.sp005703>



45. Brodde OE, Bruck H, Leineweber K, Seyfarth T (2001) Presence, distribution and physiological function of adrenergic and muscarinic receptor subtypes in the human heart. *Basic Res Cardiol* 96:528–538. <https://doi.org/10.1007/s003950170003>
46. Yamakawa K, So EL, Rajendran PS, Hoang JD, Makkar N, Mahajan A, Shivkumar K, Vaseghi M (2014) Electrophysiological effects of right and left vagal nerve stimulation on the ventricular myocardium. *Am J Physiol Heart Circ Physiol* 307:H722–731. <https://doi.org/10.1152/ajpheart.00279.2014>
47. Han SY, Bolter CP (2015) Effects of tertiapin-Q and ZD7288 on changes in sinoatrial pacemaker rhythm during vagal stimulation. *Auton Neurosci* 193:117–126. <https://doi.org/10.1016/j.autneu.2015.10.002>
48. Krapivinsky G, Krapivinsky L, Wickman K, Clapham DE (1995) G beta gamma binds directly to the G protein-gated K<sup>+</sup> channel, IK<sub>ACh</sub>. *J Biol Chem* 270:29059–29062. <https://doi.org/10.1074/jbc.270.49.29059>
49. Manabe N, Foldes FF, Torocsik A, Nagashima H, Goldiner PL, Vizi ES (1991) Presynaptic interaction between vagal and sympathetic innervation in the heart: modulation of acetylcholine and noradrenaline release. *J Auton Nerv Syst* 32:233–242. [https://doi.org/10.1016/0165-1838\(91\)90117-1](https://doi.org/10.1016/0165-1838(91)90117-1)
50. Loffelholz K, Muscholl E (1969) A muscarinic inhibition of the noradrenaline release evoked by postganglionic sympathetic nerve stimulation. *Naunyn Schmiedebergs Arch Pharmacol* 265:1–15. <https://doi.org/10.1007/BF01417206>
51. Ishibashi H, Umezumi M, Jang IS, Ito Y, Akaike N (2003) Alpha 1-adrenoceptor-activated cation currents in neurones acutely isolated from rat cardiac parasympathetic ganglia. *J Physiol* 548:111–120. <https://doi.org/10.1113/jphysiol.2002.033100>
52. Christophe J, Waelbroeck M, Chatelain P, Robberecht P (1984) Heart receptors for VIP, PHI and secretin are able to activate adenylate cyclase and to mediate inotropic and chronotropic effects. Species variations and physiopathology. *Peptides* 5:341–353. [https://doi.org/10.1016/0196-9781\(84\)90232-8](https://doi.org/10.1016/0196-9781(84)90232-8)
53. De Neef P, Robberecht P, Chatelain P, Waelbroeck M, Christophe J (1984) The in vitro chronotropic and inotropic effects of vasoactive intestinal peptide (VIP) on the atria and ventricular papillary muscle from Cynomolgus monkey heart. *Regul Pept* 8:237–244. [https://doi.org/10.1016/0167-0115\(84\)90065-x](https://doi.org/10.1016/0167-0115(84)90065-x)
54. Rigel DF (1988) Effects of neuropeptides on heart rate in dogs: comparison of VIP, PHI, NPY, CGRP, and NT. *Am J Physiol* 255:H311–317. <https://doi.org/10.1152/ajpheart.1988.255.2.H311>
55. Hogan K, Markos F (2006) Vasoactive intestinal polypeptide receptor antagonism enhances the vagally induced increase in cardiac interval of the rat atrium in vitro. *Exp Physiol* 91:641–646. <https://doi.org/10.1113/expphysiol.2006.033605>
56. Danson EJ, Choate JK, Paterson DJ (2005) Cardiac nitric oxide: emerging role for nNOS in regulating physiological function. *Pharmacol Ther* 106:57–74. <https://doi.org/10.1016/j.pharmthera.2004.11.003>
57. Wang W, Schultz HD, Ma R (1999) Cardiac sympathetic afferent sensitivity is enhanced in heart failure. *Am J Physiol* 277:H812–817. <https://doi.org/10.1152/ajpheart.1999.277.2.H812>
58. Ma R, Zucker IH, Wang W (1999) Reduced NO enhances the central gain of cardiac sympathetic afferent reflex in dogs with heart failure. *Am J Physiol* 276:H19–26. <https://doi.org/10.1152/ajpheart.1999.276.1.H19>
59. Patel KP, Zhang K, Zucker IH, Krukoff TL (1996) Decreased gene expression of neuronal nitric oxide synthase in hypothalamus and brainstem of rats in heart failure. *Brain Res* 734:109–115. [https://doi.org/10.1016/0006-8993\(96\)00620-8](https://doi.org/10.1016/0006-8993(96)00620-8)
60. Nakamura K, Ajjjola OA, Aliotta E, Armour JA, Ardell JL, Shivkumar K (2016) Pathological effects of chronic myocardial infarction on peripheral neurons mediating cardiac neurotransmission. *Auton Neurosci* 197:34–40. <https://doi.org/10.1016/j.autneu.2016.05.001>
61. Wang HJ, Wang W, Cornish KG, Rozanski GJ, Zucker IH (2014) Cardiac sympathetic afferent denervation attenuates cardiac remodeling and improves cardiovascular dysfunction in rats with heart failure. *Hypertension* 64:745–755. <https://doi.org/10.1161/HYPERTENSIONAHA.114.03699>
62. Yoshie K, Rajendran PS, Massoud L, Mistry J, Swid MA, Wu X, Sallam T, Zhang R, Goldhaber JL, Salavatian S, Ajjjola OA (2020) Cardiac TRPV1 afferent signaling promotes arrhythmogenic ventricular remodeling after myocardial infarction. *JCI Insight* 5:e124477. <https://doi.org/10.1172/jci.insight.124477>
63. Rajendran PS, Nakamura K, Ajjjola OA, Vaseghi M, Armour JA, Ardell JL, Shivkumar K (2016) Myocardial infarction induces structural and functional remodelling of the intrinsic cardiac nervous system. *J Physiol* 594:321–341. <https://doi.org/10.1113/JP271165>
64. Ajjjola OA, Hoover DB, Simerly TM, Brown TC, Yanagawa J, Biniwale RM, Lee JM, Sadeghi A, Khanlou N, Ardell JL, Shivkumar K (2017) Inflammation, oxidative stress, and glial cell activation characterize stellate ganglia from humans with electrical storm. *JCI Insight* 2:e94715. <https://doi.org/10.1172/jci.insight.94715>
65. Han S, Kobayashi K, Joung B, Piccirillo G, Maruyama M, Vinters HV, March K, Lin SF, Shen C, Fishbein MC, Chen PS, Chen LS (2012) Electroanatomic remodeling of the left stellate ganglion after myocardial infarction. *J Am Coll Cardiol* 59:954–961. <https://doi.org/10.1016/j.jacc.2011.11.030>
66. Bardsley EN, Paterson DJ (2020) Neurocardiac regulation: from cardiac mechanisms to novel therapeutic approaches. *J Physiol* 598:2957–2976. <https://doi.org/10.1113/JP276962>
67. Davis H, Herring N, Paterson DJ (2020) Downregulation of M current is coupled to membrane excitability in sympathetic neurons before the onset of hypertension. *Hypertension* 76:1915–1923. <https://doi.org/10.1161/HYPERTENSIONAHA.120.15922>
68. Wang L, Li D, Plested CP, Dawson T, Teschemacher AG, Paterson DJ (2006) Noradrenergic neuron-specific overexpression of nNOS in cardiac sympathetic nerves decreases neurotransmission. *J Mol Cell Cardiol* 41:364–370. <https://doi.org/10.1016/j.yjmcc.2006.05.007>
69. Schwarz P, Diem R, Dun NJ, Forstermann U (1995) Endogenous and exogenous nitric oxide inhibits norepinephrine release from rat heart sympathetic nerves. *Circ Res* 77:841–848. <https://doi.org/10.1161/01.res.77.4.841>
70. Balligand JL (1999) Regulation of cardiac beta-adrenergic response by nitric oxide. *Cardiovasc Res* 43:607–620. [https://doi.org/10.1016/s0008-6363\(99\)00163-7](https://doi.org/10.1016/s0008-6363(99)00163-7)
71. Kanazawa H, Ieda M, Kimura K, Arai T, Kawaguchi-Manabe H, Matsuhashi T, Endo J, Sano M, Kawakami T, Kimura T, Monkawa T, Hayashi M, Iwanami A, Okano H, Okada Y, Ishibashi-Ueda H, Ogawa S, Fukuda K (2010) Heart failure causes cholinergic transdifferentiation of cardiac sympathetic nerves via gp130-signaling cytokines in rodents. *J Clin Invest* 120:408–421. <https://doi.org/10.1172/JCI39778>
72. Olivas A, Gardner RT, Wang L, Ripplinger CM, Woodward WR, Habecker BA (2016) Myocardial infarction causes transient cholinergic transdifferentiation of cardiac sympathetic nerves via gp130. *J Neurosci* 36:479–488. <https://doi.org/10.1523/JNEUROSCI.3556-15.2016>
73. Clyburn C, Andresen MC, Ingram SL, Habecker BA (2022) Untangling peripheral sympathetic neurocircuits. *Front Cardiovasc Med* 9:842656. <https://doi.org/10.3389/fcvm.2022.842656>
74. Clyburn C, Li MH, Ingram SL, Andresen MC, Habecker BA (2023) Cholinergic collaterals arising from noradrenergic sympathetic neurons in mice. *J Physiol*. <https://doi.org/10.1113/JP284059>



75. Liang CS (2007) Cardiac sympathetic nerve terminal function in congestive heart failure. *Acta Pharmacol Sin* 28:921–927. <https://doi.org/10.1111/j.1745-7254.2007.00585.x>
76. Kimura K, Ieda M, Kanazawa H, Yagi T, Tsunoda M, Ninomiya S, Kurosawa H, Yoshimi K, Mochizuki H, Yamazaki K, Ogawa S, Fukuda K (2007) Cardiac sympathetic rejuvenation: a link between nerve function and cardiac hypertrophy. *Circ Res* 100:1755–1764. <https://doi.org/10.1161/01.RES.0000269828.62250.ab>
77. Chidsey CA, Harrison DC, Braunwald E (1962) Augmentation of the plasma nor-epinephrine response to exercise in patients with congestive heart failure. *N Engl J Med* 267:650–654. <https://doi.org/10.1056/NEJM196209272671305>
78. Levine TB, Francis GS, Goldsmith SR, Simon AB, Cohn JN (1982) Activity of the sympathetic nervous system and renin-angiotensin system assessed by plasma hormone levels and their relation to hemodynamic abnormalities in congestive heart failure. *Am J Cardiol* 49:1659–1666. [https://doi.org/10.1016/0002-9149\(82\)90243-0](https://doi.org/10.1016/0002-9149(82)90243-0)
79. Thomas JA, Marks BH (1978) Plasma norepinephrine in congestive heart failure. *Am J Cardiol* 41:233–243. [https://doi.org/10.1016/0002-9149\(78\)90162-5](https://doi.org/10.1016/0002-9149(78)90162-5)
80. Eisenhofer G, Friberg P, Rundqvist B, Quyyumi AA, Lambert G, Kaye DM, Kopin IJ, Goldstein DS, Esler MD (1996) Cardiac sympathetic nerve function in congestive heart failure. *Circulation* 93:1667–1676. <https://doi.org/10.1161/01.cir.93.9.1667>
81. Gibbs T, Tapoulal N, Shanmuganathan M, Burrage MK, Borlotti A, Banning AP, Choudhury RP, Neubauer S, Kharbanda RK, Ferreira VM, Channon KM, Herring N, Ox AMIS (2022) Neuropeptide-Y levels in ST-segment-elevation myocardial infarction: relationship with coronary microvascular function, heart failure, and mortality. *J Am Heart Assoc* 11:e024850. <https://doi.org/10.1161/JAHA.121.024850>
82. Kalla M, Hao G, Tapoulal N, Tomek J, Liu K, Woodward L, Oxford Acute Myocardial Infarction S, Dall'Armellina E, Banning AP, Choudhury RP, Neubauer S, Kharbanda RK, Channon KM, Ajjijola OA, Shivkumar K, Paterson DJ, Herring N (2020) The cardiac sympathetic co-transmitter neuropeptide Y is proarrhythmic following ST-elevation myocardial infarction despite beta-blockade. *Eur Heart J* 41:2168–2179. <https://doi.org/10.1093/eurheartj/ehz852>
83. Ullman B, Hulting J, Lundberg JM (1994) Prognostic value of plasma neuropeptide-Y in coronary care unit patients with and without acute myocardial infarction. *Eur Heart J* 15:454–461. <https://doi.org/10.1093/oxfordjournals.eurheartj.a060526>
84. Cao JM, Chen LS, KenKnight BH, Ohara T, Lee MH, Tsai J, Lai WW, Karagueuzian HS, Wolf PL, Fishbein MC, Chen PS (2000) Nerve sprouting and sudden cardiac death. *Circ Res* 86:816–821. <https://doi.org/10.1161/01.res.86.7.816>
85. Fukuda K, Kanazawa H, Aizawa Y, Ardell JL, Shivkumar K (2015) Cardiac innervation and sudden cardiac death. *Circ Res* 116:2005–2019. <https://doi.org/10.1161/CIRCRESAHA.116.304679>
86. Kaye DM, Vaddadi G, Gruskin SL, Du XJ, Esler MD (2000) Reduced myocardial nerve growth factor expression in human and experimental heart failure. *Circ Res* 86:E80–84. <https://doi.org/10.1161/01.res.86.7.e80>
87. Kimura K, Kanazawa H, Ieda M, Kawaguchi-Manabe H, Miyake Y, Yagi T, Arai T, Sano M, Fukuda K (2010) Norepinephrine-induced nerve growth factor depletion causes cardiac sympathetic denervation in severe heart failure. *Auton Neurosci* 156:27–35. <https://doi.org/10.1016/j.autneu.2010.02.005>
88. Gardner RT, Habecker BA (2013) Infarct-derived chondroitin sulfate proteoglycans prevent sympathetic reinnervation after cardiac ischemia-reperfusion injury. *J Neurosci* 33:7175–7183. <https://doi.org/10.1523/JNEUROSCI.5866-12.2013>
89. Gardner RT, Wang L, Lang BT, Cregg JM, Dunbar CL, Woodward WR, Silver J, Ripplinger CM, Habecker BA (2015) Targeting protein tyrosine phosphatase sigma after myocardial infarction restores cardiac sympathetic innervation and prevents arrhythmias. *Nat Commun* 6:6235. <https://doi.org/10.1038/ncomms7235>
90. Ungerer M, Bohm M, Elce JS, Erdmann E, Lohse MJ (1993) Altered expression of beta-adrenergic receptor kinase and beta 1-adrenergic receptors in the failing human heart. *Circulation* 87:454–463. <https://doi.org/10.1161/01.cir.87.2.454>
91. Nikolaev VO, Moshkov A, Lyon AR, Miragoli M, Novak P, Paur H, Lohse MJ, Korchev YE, Harding SE, Gorelik J (2010) Beta2-adrenergic receptor redistribution in heart failure changes cAMP compartmentation. *Science* 327:1653–1657. <https://doi.org/10.1126/science.1185988>
92. Desantiago J, Ai X, Islam M, Acuna G, Ziolo MT, Bers DM, Pogwizd SM (2008) Arrhythmogenic effects of beta2-adrenergic stimulation in the failing heart are attributable to enhanced sarcoplasmic reticulum Ca load. *Circ Res* 102:1389–1397. <https://doi.org/10.1161/CIRCRESAHA.107.169011>
93. Rengo G, Perrone-Filardi P, Femminella GD, Liccardo D, Zin-carelli C, de Lucia C, Pagano G, Marsico F, Lymperopoulos A, Leosco D (2012) Targeting the beta-adrenergic receptor system through G-protein-coupled receptor kinase 2: a new paradigm for therapy and prognostic evaluation in heart failure: from bench to bedside. *Circ Heart Fail* 5:385–391. <https://doi.org/10.1161/CIRCHEARTFAILURE.112.966895>
94. Ferguson SS (2001) Evolving concepts in G protein-coupled receptor endocytosis: the role in receptor desensitization and signaling. *Pharmacol Rev* 53:1–24
95. Reiter E, Lefkowitz RJ (2006) GRKs and beta-arrestins: roles in receptor silencing, trafficking and signaling. *Trends Endocrinol Metab* 17:159–165. <https://doi.org/10.1016/j.tem.2006.03.008>
96. Xu B, Li M, Wang Y, Zhao M, Morotti S, Shi Q, Wang Q, Barbagallo F, Teoh JP, Reddy GR, Bayne EF, Liu Y, Shen A, Puglisi JL, Ge Y, Li J, Grandi E, Nieves-Cintrón M, Xiang YK (2020) GRK5 controls SAP97-dependent cardiotoxic beta(1) adrenergic receptor-CaMKII signaling in heart failure. *Circ Res* 127:796–810. <https://doi.org/10.1161/CIRCRESAHA.119.316319>
97. Gullestad L, Aass H, Ross H, Ueland T, Geiran O, Kjekshus J, Simonsen S, Fowler M, Kobilka B (1998) Neuropeptide Y receptor 1 (NPY-Y1) expression in human heart failure and heart transplantation. *J Auton Nerv Syst* 70:84–91. [https://doi.org/10.1016/s0165-1838\(98\)00032-0](https://doi.org/10.1016/s0165-1838(98)00032-0)
98. Callanan EY, Lee EW, Tilan JU, Winaver J, Haramati A, Mulroney SE, Zukowska Z (2007) Renal and cardiac neuropeptide Y and NPY receptors in a rat model of congestive heart failure. *Am J Physiol Renal Physiol* 293:F1811–1817. <https://doi.org/10.1152/ajprenal.00191.2007>
99. Bohm M, Diet F, Feiler G, Kemkes B, Erdmann E (1988) Alpha-adrenoceptors and alpha-adrenoceptor-mediated positive inotropic effects in failing human myocardium. *J Cardiovasc Pharmacol* 12:357–364. <https://doi.org/10.1097/00005344-198809000-00015>
100. Bristow MR, Minobe W, Rasmussen R, Hershberger RE, Hoffman BB (1988) Alpha-1 adrenergic receptors in the nonfailing and failing human heart. *J Pharmacol Exp Ther* 247:1039–1045
101. Cohn JN (1993) The vasodilator-heart failure trials (V-HeFT). Mechanistic data from the VA cooperative studies introduction. *Circulation* 87:VII-4
102. Dhaliwal AS, Habib G, Deswal A, Verduzco M, Soucek J, Ramasubbu K, Aguilar D, Ma TS, Jneid HM, Bolos M, Bozkurt B (2009) Impact of alpha 1-adrenergic antagonist use for benign prostatic hypertrophy on outcomes in patients with heart failure.

- Am J Cardiol 104:270–275. <https://doi.org/10.1016/j.amjcard.2009.03.030>
103. Nass RD, Aiba T, Tomaselli GF, Akar FG (2008) Mechanisms of disease: ion channel remodeling in the failing ventricle. *Nat Clin Pract Cardiovasc Med* 5:196–207. <https://doi.org/10.1038/npcardio1130>
  104. Nattel S, Maguy A, Le Bouter S, Yeh YH (2007) Arrhythmogenic ion-channel remodeling in the heart: heart failure, myocardial infarction, and atrial fibrillation. *Physiol Rev* 87:425–456. <https://doi.org/10.1152/physrev.00014.2006>
  105. Boogers MJ, Borleffs CJ, Henneman MM, van Bommel RJ, van Ramshorst J, Boersma E, Dibbets-Schneider P, Stokkel MP, van der Wall EE, Schalij MJ, Bax JJ (2010) Cardiac sympathetic denervation assessed with 123-iodine metaiodobenzylguanidine imaging predicts ventricular arrhythmias in implantable cardioverter-defibrillator patients. *J Am Coll Cardiol* 55:2769–2777. <https://doi.org/10.1016/j.jacc.2009.12.066>
  106. Fallavollita JA, Dare JD, Carter RL, Baldwa S, Canty JM Jr (2017) Denervated myocardium is preferentially associated with sudden cardiac arrest in ischemic cardiomyopathy: a pilot competing risks analysis of cause-specific mortality. *Circ Cardiovasc Imaging* 10:e006446. <https://doi.org/10.1161/CIRCIMAGING.117.006446>
  107. Fallavollita JA, Heavey BM, Luisi AJ Jr, Michalek SM, Baldwa S, Mashtare TL Jr, Hutson AD, Dekemp RA, Haka MS, Sajjad M, Cimato TR, Curtis AB, Cain ME, Canty JM Jr (2014) Regional myocardial sympathetic denervation predicts the risk of sudden cardiac arrest in ischemic cardiomyopathy. *J Am Coll Cardiol* 63:141–149. <https://doi.org/10.1016/j.jacc.2013.07.096>
  108. Vaseghi M, Lux RL, Mahajan A, Shivkumar K (2012) Sympathetic stimulation increases dispersion of repolarization in humans with myocardial infarction. *Am J Physiol Heart Circ Physiol* 302:H1838–1846. <https://doi.org/10.1152/ajpheart.01106.2011>
  109. Warner MR, Wisler PL, Hodges TD, Watanabe AM, Zipes DP (1993) Mechanisms of denervation supersensitivity in regionally denervated canine hearts. *Am J Physiol* 264:H815–820. <https://doi.org/10.1152/ajpheart.1993.264.3.H815>
  110. Aflaki M, Qi XY, Xiao L, Ordog B, Tadevosyan A, Luo X, Maguy A, Shi Y, Tardif JC, Nattel S (2014) Exchange protein directly activated by cAMP mediates slow delayed-rectifier current remodeling by sustained beta-adrenergic activation in guinea pig hearts. *Circ Res* 114:993–1003. <https://doi.org/10.1161/CIRCRESAHA.113.302982>
  111. Tapa S, Wang L, Francis Stuart SD, Wang Z, Jiang Y, Habecker BA, Ripplinger CM (2020) Adrenergic supersensitivity and impaired neural control of cardiac electrophysiology following regional cardiac sympathetic nerve loss. *Sci Rep* 10:18801. <https://doi.org/10.1038/s41598-020-75903-y>
  112. Vaseghi M, Salavatian S, Rajendran PS, Yagishita D, Woodward WR, Hamon D, Yamakawa K, Irie T, Habecker BA, Shivkumar K (2017) Parasympathetic dysfunction and antiarrhythmic effect of vagal nerve stimulation following myocardial infarction. *JCI Insight* 2:e86715. <https://doi.org/10.1172/jci.insight.86715>
  113. Lokhandwala Z, Devarajan A, Wang K, Shannon K, Tompkins JD, Vaseghi M (2021) Abstract: myocardial infarction selectively decreases cardiac vagal afferent neurotransmission: implications for mechanisms behind cardiac parasympathetic dysfunction. *Circulation* 144:A14090. [https://doi.org/10.1161/circ.144.suppl\\_1.14090](https://doi.org/10.1161/circ.144.suppl_1.14090)
  114. Dunlap ME, Bibevski S, Rosenberry TL, Ernsberger P (2003) Mechanisms of altered vagal control in heart failure: influence of muscarinic receptors and acetylcholinesterase activity. *Am J Physiol Heart Circ Physiol* 285:H1632–1640. <https://doi.org/10.1152/ajpheart.01051.2002>
  115. Mazzadi AN, Pineau J, Costes N, Le Bars D, Bonnefoi F, Croisille P, Porcher R, Chevalier P (2009) Muscarinic receptor upregulation in patients with myocardial infarction: a new paradigm. *Circ Cardiovasc Imaging* 2:365–372. <https://doi.org/10.1161/CIRCIMAGING.108.822106>
  116. He B, Lu Z, He W, Wu L, Cui B, Hu X, Yu L, Huang C, Jiang H (2013) Effects of ganglionated plexi ablation on ventricular electrophysiological properties in normal hearts and after acute myocardial ischemia. *Int J Cardiol* 168:86–93. <https://doi.org/10.1016/j.ijcard.2012.09.067>
  117. Jungen C, Scherschel K, Eickholt C, Kuklik P, Klatt N, Bork N, Salzbrunn T, Alken F, Angendoer S, Klene C, Mester J, Klockner N, Veldkamp MW, Schumacher U, Willems S, Nikolaev VO, Meyer C (2017) Disruption of cardiac cholinergic neurons enhances susceptibility to ventricular arrhythmias. *Nat Commun* 8:14155. <https://doi.org/10.1038/ncomms14155>
  118. Wu B, Xu S, Dai R, Hong M, Wu H, Lin R (2019) Epicardial ganglionated plexi ablation increases the inducibility of ventricular tachyarrhythmias in a canine postmyocardial infarction model. *J Cardiovasc Electrophysiol* 30:741–746. <https://doi.org/10.1111/jce.13912>
  119. Collaboration NCDRF (2017) Worldwide trends in blood pressure from 1975 to 2015: a pooled analysis of 1479 population-based measurement studies with 19.1 million participants. *Lancet* 389:37–55. [https://doi.org/10.1016/S0140-6736\(16\)31919-5](https://doi.org/10.1016/S0140-6736(16)31919-5)
  120. Esler M (2015) The sympathetic nervous system in hypertension: back to the future? *Curr Hypertens Rep* 17:11. <https://doi.org/10.1007/s11906-014-0519-8>
  121. Grassi G (2009) Assessment of sympathetic cardiovascular drive in human hypertension: achievements and perspectives. *Hypertension* 54:690–697. <https://doi.org/10.1161/HYPERTENSI.0NAHA.108.119883>
  122. Greenwood JP, Stoker JB, Mary DA (1999) Single-unit sympathetic discharge: quantitative assessment in human hypertensive disease. *Circulation* 100:1305–1310. <https://doi.org/10.1161/01.cir.100.12.1305>
  123. Schlaich MP, Kaye DM, Lambert E, Sommerville M, Socratous F, Esler MD (2003) Relation between cardiac sympathetic activity and hypertensive left ventricular hypertrophy. *Circulation* 108:560–565. <https://doi.org/10.1161/01.CIR.0000081775.72651.B6>
  124. de Champlain J (1990) Pre- and postsynaptic adrenergic dysfunctions in hypertension. *J Hypertens Suppl* 8:S77–85
  125. Esler MD, Hasking GJ, Willett IR, Leonard PW, Jennings GL (1985) Noradrenaline release and sympathetic nervous system activity. *J Hypertens* 3:117–129. <https://doi.org/10.1097/00004872-198504000-00003>
  126. Masuo K, Kawaguchi H, Mikami H, Ogihara T, Tuck ML (2003) Serum uric acid and plasma norepinephrine concentrations predict subsequent weight gain and blood pressure elevation. *Hypertension* 42:474–480. <https://doi.org/10.1161/01.HYP.0000091371.53502.D3>
  127. Singh JP, Larson MG, Tsuji H, Evans JC, O'Donnell CJ, Levy D (1998) Reduced heart rate variability and new-onset hypertension: insights into pathogenesis of hypertension: the Framingham Heart Study. *Hypertension* 32:293–297. <https://doi.org/10.1161/01.hyp.32.2.293>
  128. Fisher JP, Paton JF (2012) The sympathetic nervous system and blood pressure in humans: implications for hypertension. *J Hum Hypertens* 26:463–475. <https://doi.org/10.1038/jhh.2011.66>
  129. Zucker IH, Schultz HD, Li YF, Wang Y, Wang W, Patel KP (2004) The origin of sympathetic outflow in heart failure: the roles of angiotensin II and nitric oxide. *Prog Biophys Mol Biol* 84:217–232. <https://doi.org/10.1016/j.pbiomolbio.2003.11.010>
  130. Larsen HE, Lefkimmatis K, Paterson DJ (2016) Sympathetic neurons are a powerful driver of myocyte function in

- cardiovascular disease. *Sci Rep* 6:38898. <https://doi.org/10.1038/srep38898>
131. Shanks J, Manou-Stathopoulou S, Lu CJ, Li D, Paterson DJ, Herring N (2013) Cardiac sympathetic dysfunction in the prehypertensive spontaneously hypertensive rat. *Am J Physiol Heart Circ Physiol* 305:H980-986. <https://doi.org/10.1152/ajpheart.00255.2013>
  132. DiBona GF (2002) Sympathetic nervous system and the kidney in hypertension. *Curr Opin Nephrol Hypertens* 11:197-200. <https://doi.org/10.1097/00041552-200203000-00011>
  133. Krum H, Schlaich M, Whitbourn R, Sobotka PA, Sadowski J, Bartus K, Kapelak B, Walton A, Sievert H, Thambar S, Abraham WT, Esler M (2009) Catheter-based renal sympathetic denervation for resistant hypertension: a multicentre safety and proof-of-principle cohort study. *Lancet* 373:1275-1281. [https://doi.org/10.1016/S0140-6736\(09\)60566-3](https://doi.org/10.1016/S0140-6736(09)60566-3)
  134. Schlaich MP, Sobotka PA, Krum H, Lambert E, Esler MD (2009) Renal sympathetic-nerve ablation for uncontrolled hypertension. *N Engl J Med* 361:932-934. <https://doi.org/10.1056/NEJMc0904179>
  135. Li D, Lee CW, Buckler K, Parekh A, Herring N, Paterson DJ (2012) Abnormal intracellular calcium homeostasis in sympathetic neurons from young prehypertensive rats. *Hypertension* 59:642-649. <https://doi.org/10.1161/HYPERTENSIONAHA.111.186460>
  136. Zugck C, Lossnitzer D, Backs J, Kristen A, Kinscherf R, Haass M (2003) Increased cardiac norepinephrine release in spontaneously hypertensive rats: role of presynaptic alpha-2A adrenoceptors. *J Hypertens* 21:1363-1369. <https://doi.org/10.1097/00004872-200307000-00026>
  137. Shanks J, Mane S, Ryan R, Paterson DJ (2013) Ganglion-specific impairment of the norepinephrine transporter in the hypertensive rat. *Hypertension* 61:187-193. <https://doi.org/10.1161/HYPERTENSIONAHA.112.202184>
  138. Castellano M, Bohm M (1997) The cardiac beta-adrenoceptor-mediated signaling pathway and its alterations in hypertensive heart disease. *Hypertension* 29:715-722. <https://doi.org/10.1161/01.hyp.29.3.715>
  139. Palatini P, Julius S (2009) The role of cardiac autonomic function in hypertension and cardiovascular disease. *Curr Hypertens Rep* 11:199-205. <https://doi.org/10.1007/s11906-009-0035-4>
  140. Bohm M, Kirchmayr R, Erdmann E (1995) Myocardial Gi alpha-protein levels in patients with hypertensive cardiac hypertrophy, ischemic heart disease and cardiogenic shock. *Cardiovasc Res* 30:611-618
  141. Bradley HA, Wiysonge CS, Volmink JA, Mayosi BM, Opie LH (2006) How strong is the evidence for use of beta-blockers as first-line therapy for hypertension? Systematic review and meta-analysis. *J Hypertens* 24:2131-2141. <https://doi.org/10.1097/01.hjh.0000249685.58370.28>
  142. Blumenfeld JD, Sealey JE, Mann SJ, Bragat A, Marion R, Pecker MS, Sotelo J, August P, Pickering TG, Laragh JH (1999) Beta-adrenergic receptor blockade as a therapeutic approach for suppressing the renin-angiotensin-aldosterone system in normotensive and hypertensive subjects. *Am J Hypertens* 12:451-459. [https://doi.org/10.1016/s0895-7061\(99\)00005-9](https://doi.org/10.1016/s0895-7061(99)00005-9)
  143. Sipe JD, Benson MD, Buxbaum JN, Ikeda SI, Merlini G, Saraiva MJ, Westermarck P (2016) Amyloid fibril proteins and amyloidosis: chemical identification and clinical classification international society of amyloidosis 2016 nomenclature guidelines. *Amyloid* 23:209-213. <https://doi.org/10.1080/13506129.2016.1257986>
  144. Cueto-Garcia L, Reeder GS, Kyle RA, Wood DL, Seward JB, Naessens J, Offord KP, Greipp PR, Edwards WD, Tajik AJ (1985) Echocardiographic findings in systemic amyloidosis: spectrum of cardiac involvement and relation to survival. *J Am Coll Cardiol* 6:737-743. [https://doi.org/10.1016/s0735-1097\(85\)80475-7](https://doi.org/10.1016/s0735-1097(85)80475-7)
  145. Ikeda S, Yanagisawa N, Hongo M, Ito N (1987) Vagus nerve and celiac ganglion lesions in generalized amyloidosis. A correlative study of familial amyloid polyneuropathy and AL-amyloidosis. *J Neurol Sci* 79:129-139. [https://doi.org/10.1016/0022-510x\(87\)90267-x](https://doi.org/10.1016/0022-510x(87)90267-x)
  146. Ikeda S-i (2022) Amyloid neuropathy and autonomic dysfunction. *Neurol Clin Neurosci* 10:137-146. <https://doi.org/10.1111/ncn3.12601>
  147. Bernardi L, Passino C, Porta C, Anesi E, Palladini G, Merlini G (2002) Widespread cardiovascular autonomic dysfunction in primary amyloidosis: does spontaneous hyperventilation have a compensatory role against postural hypotension? *Heart* 88:615-621. <https://doi.org/10.1136/heart.88.6.615>
  148. King P, Kates AM (2022) Management of cardiac symptoms in amyloidosis. *Am J Med* 135(Suppl 1):S9-S12. <https://doi.org/10.1016/j.amjmed.2022.02.005>
  149. Gemmi F, Miliani A, Bergesio F, Salvadori M, Merlini G (1996) Functional study of autonomic neuropathy in primary (AL) amyloidosis. *Amyloid* 3:167-172. <https://doi.org/10.3109/13506129609045517>
  150. Reyners AK, Hazenberg BP, Reitsma WD, Smit AJ (2002) Heart rate variability as a predictor of mortality in patients with AA and AL amyloidosis. *Eur Heart J* 23:157-161. <https://doi.org/10.1053/ehj.2001.2972>
  151. Yamada S, Yoshihisa A, Hijioka N, Kamioka M, Kaneshiro T, Yokokawa T, Misaka T, Ishida T, Takeishi Y (2020) Autonomic dysfunction in cardiac amyloidosis assessed by heart rate variability and heart rate turbulence. *Ann Noninvasive Electrocardiol* 25:e12749. <https://doi.org/10.1111/anec.12749>
  152. Lamb YN (2021) Tafamidis: a review in transthyretin amyloid cardiomyopathy. *Am J Cardiovasc Drugs* 21:113-121. <https://doi.org/10.1007/s40256-020-00461-7>
  153. Maurer MS, Schwartz JH, Gundapaneni B, Elliott PM, Merlini G, Waddington-Cruz M, Kristen AV, Grogan M, Witteles R, Damy T, Drachman BM, Shah SJ, Hanna M, Judge DP, Barsdorf AI, Huber P, Patterson TA, Riley S, Schumacher J, Stewart M, Sultan MB, Rapezzi C, Investigators A-AS (2018) Tafamidis treatment for patients with transthyretin amyloid cardiomyopathy. *N Engl J Med* 379:1007-1016. <https://doi.org/10.1056/NEJMoa1805689>
  154. Stern LK, Patel J (2022) Cardiac amyloidosis treatment. *Methodist Debakey Cardiovasc J* 18:59-72. <https://doi.org/10.14797/mdcvj.1050>
  155. Kim EJ, Holmes BB, Huang S, Lugo R, Al Aboud A, Goodman S, Hung RR, Slosky D, Stevenson WG, Michaud GF, John RM (2020) Outcomes in patients with cardiac amyloidosis and implantable cardioverter-defibrillator. *Europace* 22:1216-1223. <https://doi.org/10.1093/europace/euaa094>
  156. Lin G, Dispenzieri A, Kyle R, Grogan M, Brady PA (2013) Implantable cardioverter defibrillators in patients with cardiac amyloidosis. *J Cardiovasc Electrophysiol* 24:793-798. <https://doi.org/10.1111/jce.12123>
  157. Akashi YJ, Nef HM, Lyon AR (2015) Epidemiology and pathophysiology of Takotsubo syndrome. *Nat Rev Cardiol* 12:387-397. <https://doi.org/10.1038/nrcardio.2015.39>
  158. Lyon AR, Bossone E, Schneider B, Sechtem U, Citro R, Underwood SR, Sheppard MN, Figtree GA, Parodi G, Akashi YJ, Ruschitzka F, Filippatos G, Mebazaa A, Omerovic E (2016) Current state of knowledge on Takotsubo syndrome: a position statement from the taskforce on Takotsubo syndrome of the heart failure association of the European society of cardiology. *Eur J Heart Fail* 18:8-27. <https://doi.org/10.1002/ejhf.424>
  159. Lyon AR, Citro R, Schneider B, Morel O, Ghadri JR, Templin C, Omerovic E (2021) Pathophysiology of Takotsubo syndrome:



- JACC state-of-the-art review. *J Am Coll Cardiol* 77:902–921. <https://doi.org/10.1016/j.jacc.2020.10.060>
160. Redfors B, Ali A, Shao Y, Lundgren J, Gan LM, Omerovic E (2014) Different catecholamines induce different patterns of Takotsubo-like cardiac dysfunction in an apparently afterload dependent manner. *Int J Cardiol* 174:330–336. <https://doi.org/10.1016/j.ijcard.2014.04.103>
  161. Wittstein IS, Thiemann DR, Lima JA, Baughman KL, Schulman SP, Gerstenblith G, Wu KC, Rade JJ, Bivalacqua TJ, Champion HC (2005) Neurohumoral features of myocardial stunning due to sudden emotional stress. *N Engl J Med* 352:539–548. <https://doi.org/10.1056/NEJMoa043046>
  162. Ghadri JR, Wittstein IS, Prasad A, Sharkey S, Dote K, Akashi YJ, Cammann VL, Crea F, Galiuto L, Desmet W, Yoshida T, Manfredini R, Eitel I, Kosuge M, Nef HM, Deshmukh A, Lerman A, Bossone E, Citro R, Ueyama T, Corrado D, Kurisu S, Ruschitzka F, Winchester D, Lyon AR, Omerovic E, Bax JJ, Meimoun P, Tarantino G, Rihal C, Yh S, Migliore F, Horowitz JD, Shimokawa H, Luscher TF, Templin C (2018) International expert consensus document on Takotsubo syndrome (Part I): clinical characteristics, diagnostic criteria, and pathophysiology. *Eur Heart J* 39:2032–2046. <https://doi.org/10.1093/eurheartj/ehy076>
  163. Martin EA, Prasad A, Rihal CS, Lerman LO, Lerman A (2010) Endothelial function and vascular response to mental stress are impaired in patients with apical ballooning syndrome. *J Am Coll Cardiol* 56:1840–1846. <https://doi.org/10.1016/j.jacc.2010.03.107>
  164. Redfors B, Shao Y, Ali A, Omerovic E (2014) Are ischemic stunning, conditioning, and “Takotsubo” different sides to the same coin? *Int J Cardiol* 172:490–491. <https://doi.org/10.1016/j.ijcard.2014.01.052>
  165. Land S, Niederer SA, Louch WE, Roe AT, Aronsen JM, Stuckey DJ, Sikkil MB, Tranter MH, Lyon AR, Harding SE, Smith NP (2014) Computational modeling of Takotsubo cardiomyopathy: effect of spatially varying beta-adrenergic stimulation in the rat left ventricle. *Am J Physiol Heart Circ Physiol* 307:H1487–1496. <https://doi.org/10.1152/ajpheart.00443.2014>
  166. Paur H, Wright PT, Sikkil MB, Tranter MH, Mansfield C, O’Gara P, Stuckey DJ, Nikolaev VO, Diakonov I, Pannell L, Gong H, Sun H, Peters NS, Petrou M, Zheng Z, Gorelik J, Lyon AR, Harding SE (2012) High levels of circulating epinephrine trigger apical cardiodepression in a beta2-adrenergic receptor/Gi-dependent manner: a new model of Takotsubo cardiomyopathy. *Circulation* 126:697–706. <https://doi.org/10.1161/CIRCULATIONAHA.112.111591>
  167. Borchert T, Hubscher D, Guessoum CI, Lam TD, Ghadri JR, Schellinger IN, Tiburcy M, Liaw NY, Li Y, Haas J, Sossalla S, Huber MA, Cyganek L, Jacobshagen C, Dressel R, Raaz U, Nikolaev VO, Guan K, Thiele H, Meder B, Wollnik B, Zimmermann WH, Luscher TF, Hasenfuss G, Templin C, Streckfuss-Bomeke K (2017) Catecholamine-dependent beta-adrenergic signaling in a pluripotent stem cell model of Takotsubo cardiomyopathy. *J Am Coll Cardiol* 70:975–991. <https://doi.org/10.1016/j.jacc.2017.06.061>
  168. Vaccaro A, Despas F, Delmas C, Lairez O, Lambert E, Lambert G, Labrunee M, Guiraud T, Esler M, Galinier M, Senard JM, Pathak A (2014) Direct evidences for sympathetic hyperactivity and baroreflex impairment in Tako Tsubo cardiopathy. *PLoS ONE* 9:e93278. <https://doi.org/10.1371/journal.pone.0093278>
  169. Akashi YJ, Barbaro G, Sakurai T, Nakazawa K, Miyake F (2007) Cardiac autonomic imbalance in patients with reversible ventricular dysfunction Takotsubo cardiomyopathy. *QJM* 100:335–343. <https://doi.org/10.1093/qjmed/hcm028>
  170. Ortak J, Khattab K, Barantke M, Wiegand UK, Bansch D, Ince H, Nienaber CA, Bonnemeier H (2009) Evolution of cardiac autonomic nervous activity indices in patients presenting with transient left ventricular apical ballooning. *Pacing Clin Electrophysiol* 32(Suppl 1):S21–25. <https://doi.org/10.1111/j.1540-8159.2008.02221.x>
  171. Redfors B, Vedad R, Angeras O, Ramunddal T, Petursson P, Haraldsson I, Ali A, Dworeck C, Odenstedt J, Ioaness D, Libungan B, Shao Y, Albertsson P, Stone GW, Omerovic E (2015) Mortality in Takotsubo syndrome is similar to mortality in myocardial infarction—a report from the SWEDEHEART registry. *Int J Cardiol* 185:282–289. <https://doi.org/10.1016/j.ijcard.2015.03.162>
  172. Stiermaier T, Moeller C, Oehler K, Desch S, Graf T, Eitel C, Vonthein R, Schuler G, Thiele H, Eitel I (2016) Long-term excess mortality in Takotsubo cardiomyopathy: predictors, causes and clinical consequences. *Eur J Heart Fail* 18:650–656. <https://doi.org/10.1002/ejhf.494>
  173. Norcliffe-Kaufmann L, Kaufmann H, Martinez J, Katz SD, Tully L, Reynolds HR (2016) Autonomic findings in Takotsubo cardiomyopathy. *Am J Cardiol* 117:206–213. <https://doi.org/10.1016/j.amjcard.2015.10.028>
  174. Medina de Chazal H, Del Buono MG, Keyser-Marcus L, Ma L, Moeller FG, Berrocal D, Abbate A (2018) Stress cardiomyopathy diagnosis and treatment: JACC state-of-the-art review. *J Am Coll Cardiol* 72:1955–1971. <https://doi.org/10.1016/j.jacc.2018.07.072>
  175. Santoro F, Ieva R, Musaico F, Ferraretti A, Triggiani G, Tarantino N, Di Biase M, Brunetti ND (2014) Lack of efficacy of drug therapy in preventing Takotsubo cardiomyopathy recurrence: a meta-analysis. *Clin Cardiol* 37:434–439. <https://doi.org/10.1002/clc.22280>
  176. Singh K, Carson K, Usmani Z, Sawhney G, Shah R, Horowitz J (2014) Systematic review and meta-analysis of incidence and correlates of recurrence of Takotsubo cardiomyopathy. *Int J Cardiol* 174:696–701. <https://doi.org/10.1016/j.ijcard.2014.04.221>
  177. Templin C, Ghadri JR, Diekmann J, Napp LC, Bataiosu DR, Jaguszewski M, Cammann VL, Sarcon A, Geyer V, Neumann CA, Seifert B, Hellermann J, Schwyzer M, Eisenhardt K, Jenewein J, Franke J, Katus HA, Burgdorf C, Schunkert H, Moeller C, Thiele H, Bauersachs J, Tschope C, Schultheiss HP, Laney CA, Rajan L, Michels G, Pfister R, Ukena C, Bohm M, Erbel R, Cuneo A, Kuck KH, Jacobshagen C, Hasenfuss G, Karakas M, Koenig W, Rottbauer W, Said SM, Braun-Dullaeus RC, Cuculi F, Banning A, Fischer TA, Vasankari T, Airaksinen KE, Fijalkowski M, Rynkiewicz A, Pawlak M, Opolski G, Dworakowski R, MacCarthy P, Kaiser C, Osswald S, Galiuto L, Crea F, Dichtl W, Franz WM, Empen K, Felix SB, Delmas C, Lairez O, Erne P, Bax JJ, Ford I, Ruschitzka F, Prasad A, Luscher TF (2015) Clinical features and outcomes of Takotsubo (stress) cardiomyopathy. *N Engl J Med* 373:929–938. <https://doi.org/10.1056/NEJMoa1406761>
  178. Ackerman MJ, Clapham DE (1997) Ion channels—basic science and clinical disease. *N Engl J Med* 336:1575–1586. <https://doi.org/10.1056/NEJM199705293362207>
  179. Keating MT, Sanguinetti MC (2001) Molecular and cellular mechanisms of cardiac arrhythmias. *Cell* 104:569–580. [https://doi.org/10.1016/s0092-8674\(01\)00243-4](https://doi.org/10.1016/s0092-8674(01)00243-4)
  180. Moss AJ, Schwartz PJ, Crampton RS, Locati E, Carleen E (1985) The long QT syndrome: a prospective international study. *Circulation* 71:17–21. <https://doi.org/10.1161/01.cir.71.1.17>
  181. Napolitano C, Priori SG, Schwartz PJ, Bloise R, Ronchetti E, Nastoli J, Bottelli G, Cerrone M, Leonardi S (2005) Genetic testing in the long QT syndrome: development and validation of an efficient approach to genotyping in clinical practice. *JAMA* 294:2975–2980. <https://doi.org/10.1001/jama.294.23.2975>

182. Schwartz PJ (2001) Another role for the sympathetic nervous system in the long QT syndrome? *J Cardiovasc Electrophysiol* 12:500–502. <https://doi.org/10.1046/j.1540-8167.2001.00500.x>
183. Moss AJ, Robinson JL, Gessman L, Gillespie R, Zareba W, Schwartz PJ, Vincent GM, Benhorin J, Heilbron EL, Towbin JA, Priori SG, Napolitano C, Zhang L, Medina A, Andrews ML, Timothy K (1999) Comparison of clinical and genetic variables of cardiac events associated with loud noise versus swimming among subjects with the long QT syndrome. *Am J Cardiol* 84:876–879. [https://doi.org/10.1016/s0002-9149\(99\)00458-0](https://doi.org/10.1016/s0002-9149(99)00458-0)
184. Saadeh K, Shivkumar K, Jeevaratnam K (2020) Targeting the beta-adrenergic receptor in the clinical management of congenital long QT syndrome. *Ann N Y Acad Sci* 1474:27–46. <https://doi.org/10.1111/nyas.14425>
185. Noda T, Takaki H, Kurita T, Suyama K, Nagaya N, Taguchi A, Aihara N, Kamakura S, Sunagawa K, Nakamura K, Ohe T, Horie M, Napolitano C, Towbin JA, Priori SG, Shimizu W (2002) Gene-specific response of dynamic ventricular repolarization to sympathetic stimulation in LQT1, LQT2 and LQT3 forms of congenital long QT syndrome. *Eur Heart J* 23:975–983. <https://doi.org/10.1053/euhj.2001.3079>
186. Shimizu W, Antzelevitch C (2000) Differential effects of beta-adrenergic agonists and antagonists in LQT1, LQT2 and LQT3 models of the long QT syndrome. *J Am Coll Cardiol* 35:778–786. [https://doi.org/10.1016/s0735-1097\(99\)00582-3](https://doi.org/10.1016/s0735-1097(99)00582-3)
187. Shimizu W, Noda T, Takaki H, Kurita T, Nagaya N, Satomi K, Suyama K, Aihara N, Kamakura S, Sunagawa K, Echigo S, Nakamura K, Ohe T, Towbin JA, Napolitano C, Priori SG (2003) Epinephrine unmasks latent mutation carriers with LQT1 form of congenital long-QT syndrome. *J Am Coll Cardiol* 41:633–642. [https://doi.org/10.1016/s0735-1097\(02\)02850-4](https://doi.org/10.1016/s0735-1097(02)02850-4)
188. Swan H, Viitasalo M, Piippo K, Laitinen P, Kontula K, Toivonen L (1999) Sinus node function and ventricular repolarization during exercise stress test in long QT syndrome patients with KvLQT1 and HERG potassium channel defects. *J Am Coll Cardiol* 34:823–829. [https://doi.org/10.1016/s0735-1097\(99\)00255-7](https://doi.org/10.1016/s0735-1097(99)00255-7)
189. Takenaka K, Ai T, Shimizu W, Kobori A, Ninomiya T, Otani H, Kubota T, Takaki H, Kamakura S, Horie M (2003) Exercise stress test amplifies genotype-phenotype correlation in the LQT1 and LQT2 forms of the long-QT syndrome. *Circulation* 107:838–844. <https://doi.org/10.1161/01.cir.0000048142.85076.a2>
190. Ackerman MJ, Khositseth A, Tester DJ, Hejlik JB, Shen WK, Porter CB (2002) Epinephrine-induced QT interval prolongation: a gene-specific paradoxical response in congenital long QT syndrome. *Mayo Clin Proc* 77:413–421. <https://doi.org/10.4065/77.5.413>
191. Tanabe Y, Inagaki M, Kurita T, Nagaya N, Taguchi A, Suyama K, Aihara N, Kamakura S, Sunagawa K, Nakamura K, Ohe T, Towbin JA, Priori SG, Shimizu W (2001) Sympathetic stimulation produces a greater increase in both transmural and spatial dispersion of repolarization in LQT1 than LQT2 forms of congenital long QT syndrome. *J Am Coll Cardiol* 37:911–919. [https://doi.org/10.1016/s0735-1097\(00\)01200-6](https://doi.org/10.1016/s0735-1097(00)01200-6)
192. Rizzo S, Basso C, Troost D, Aronica E, Frigo AC, Driessen AH, Thiene G, Wilde AA, van der Wal AC (2014) T-cell-mediated inflammatory activity in the stellate ganglia of patients with ion-channel disease and severe ventricular arrhythmias. *Circ Arrhythm Electrophysiol* 7:224–229. <https://doi.org/10.1161/CIRCEP.113.001184>
193. Kies P, Paul M, Gerss J, Stegger L, Monnig G, Schober O, Wichter T, Schafers M, Schulze-Bahr E (2011) Impaired cardiac sympathetic innervation in symptomatic patients with long QT syndrome. *Eur J Nucl Med Mol Imaging* 38:1899–1907. <https://doi.org/10.1007/s00259-011-1852-7>
194. Muller KD, Jakob H, Neuzner J, Grebe SF, Schleppe M, Pitschner HF (1993) 123I-metaiodobenzylguanidine scintigraphy in the detection of irregular regional sympathetic innervation in long QT syndrome. *Eur Heart J* 14:316–325. <https://doi.org/10.1093/eurheartj/14.3.316>
195. Ahn J, Kim HJ, Choi JI, Lee KN, Shim J, Ahn HS, Kim YH (2017) Effectiveness of beta-blockers depending on the genotype of congenital long-QT syndrome: a meta-analysis. *PLoS ONE* 12:e0185680. <https://doi.org/10.1371/journal.pone.0185680>
196. Moss AJ, Shimizu W, Wilde AA, Towbin JA, Zareba W, Robinson JL, Qi M, Vincent GM, Ackerman MJ, Kaufman ES, Hofman N, Seth R, Kamakura S, Miyamoto Y, Goldenberg I, Andrews ML, McNitt S (2007) Clinical aspects of type-1 long-QT syndrome by location, coding type, and biophysical function of mutations involving the KCNQ1 gene. *Circulation* 115:2481–2489. <https://doi.org/10.1161/CIRCULATIONAHA.106.665406>
197. Moss AJ, Zareba W, Hall WJ, Schwartz PJ, Crampton RS, Benhorin J, Vincent GM, Locati EH, Priori SG, Napolitano C, Medina A, Zhang L, Robinson JL, Timothy K, Towbin JA, Andrews ML (2000) Effectiveness and limitations of beta-blocker therapy in congenital long-QT syndrome. *Circulation* 101:616–623. <https://doi.org/10.1161/01.cir.101.6.616>
198. Priori SG, Napolitano C, Schwartz PJ, Grillo M, Bloise R, Ronchetti E, Moncalvo C, Tulipani C, Veia A, Bottelli G, Nastoli J (2004) Association of long QT syndrome loci and cardiac events among patients treated with beta-blockers. *JAMA* 292:1341–1344. <https://doi.org/10.1001/jama.292.11.1341>
199. Schwartz PJ, Ackerman MJ, Antzelevitch C, Bezzina CR, Borggrefe M, Cuneo BF, Wilde AAM (2020) Inherited cardiac arrhythmias. *Nat Rev Dis Primers* 6:58. <https://doi.org/10.1038/s41572-020-0188-7>
200. Shimizu W, Moss AJ, Wilde AA, Towbin JA, Ackerman MJ, January CT, Tester DJ, Zareba W, Robinson JL, Qi M, Vincent GM, Kaufman ES, Hofman N, Noda T, Kamakura S, Miyamoto Y, Shah S, Amin V, Goldenberg I, Andrews ML, McNitt S (2009) Genotype-phenotype aspects of type 2 long QT syndrome. *J Am Coll Cardiol* 54:2052–2062. <https://doi.org/10.1016/j.jacc.2009.08.028>
201. De Ferrari GM, Locati EH, Priori SG, Schwartz PJ (1995) Left cardiac sympathetic denervation in long QT syndrome patients. *J Interv Cardiol* 8:776–781. <https://doi.org/10.1111/j.1540-8183.1995.tb00930.x>
202. Dusi V, De Ferrari GM, Pugliese L, Schwartz PJ (2019) Cardiac sympathetic denervation in channelopathies. *Front Cardiovasc Med* 6:27. <https://doi.org/10.3389/fcvm.2019.00027>
203. Dusi V, Pugliese L, De Ferrari GM, Odero A, Crotti L, Dagradi F, Castelletti S, Vicentini A, Rordorf R, Li C, Shkolnikova M, Spazzolini C, Schwartz PJ (2022) Left cardiac sympathetic denervation for long QT syndrome: 50 years' experience provides guidance for management. *JACC Clin Electrophysiol* 8:281–294. <https://doi.org/10.1016/j.jacep.2021.09.002>
204. Schwartz PJ, Locati EH, Moss AJ, Crampton RS, Trazzi R, Ruberti U (1991) Left cardiac sympathetic denervation in the therapy of congenital long QT syndrome. A worldwide report. *Circulation* 84:503–511. <https://doi.org/10.1161/01.cir.84.2.503>
205. Schwartz PJ, Priori SG, Cerrone M, Spazzolini C, Odero A, Napolitano C, Bloise R, De Ferrari GM, Klersy C, Moss AJ, Zareba W, Robinson JL, Hall WJ, Brink PA, Toivonen L, Epstein AE, Li C, Hu D (2004) Left cardiac sympathetic denervation in the management of high-risk patients affected by the long-QT syndrome. *Circulation* 109:1826–1833. <https://doi.org/10.1161/01.CIR.0000125523.14403.1E>
206. Cerrone M, Napolitano C, Priori SG (2009) Catecholaminergic polymorphic ventricular tachycardia: a paradigm to understand mechanisms of arrhythmias associated to impaired Ca(2+)



- regulation. *Heart Rhythm* 6:1652–1659. <https://doi.org/10.1016/j.hrthm.2009.06.033>
207. Lahat H, Pras E, Olender T, Avidan N, Ben-Asher E, Man O, Levy-Nissenbaum E, Khoury A, Lorber A, Goldman B, Lancet D, Eldar M (2001) A missense mutation in a highly conserved region of CASQ2 is associated with autosomal recessive catecholamine-induced polymorphic ventricular tachycardia in Bedouin families from Israel. *Am J Hum Genet* 69:1378–1384. <https://doi.org/10.1086/324565>
  208. Priori SG, Napolitano C, Tiso N, Memmi M, Vignati G, Bloise R, Sorrentino V, Danieli GA (2001) Mutations in the cardiac ryanodine receptor gene (hRyR2) underlie catecholaminergic polymorphic ventricular tachycardia. *Circulation* 103:196–200. <https://doi.org/10.1161/01.cir.103.2.196>
  209. Wehrens XH (2007) The molecular basis of catecholaminergic polymorphic ventricular tachycardia: what are the different hypotheses regarding mechanisms? *Heart Rhythm* 4:794–797. <https://doi.org/10.1016/j.hrthm.2006.12.016>
  210. Jiang D, Wang R, Xiao B, Kong H, Hunt DJ, Choi P, Zhang L, Chen SR (2005) Enhanced store overload-induced Ca<sup>2+</sup> release and channel sensitivity to luminal Ca<sup>2+</sup> activation are common defects of RyR2 mutations linked to ventricular tachycardia and sudden death. *Circ Res* 97:1173–1181. <https://doi.org/10.1161/01.RES.0000192146.85173.4b>
  211. Lehnart SE, Wehrens XH, Laitinen PJ, Reiken SR, Deng SX, Cheng Z, Landry DW, Kontula K, Swan H, Marks AR (2004) Sudden death in familial polymorphic ventricular tachycardia associated with calcium release channel (ryanodine receptor) leak. *Circulation* 109:3208–3214. <https://doi.org/10.1161/01.CIR.0000132472.98675.EC>
  212. Liu N, Colombi B, Memmi M, Zissimopoulos S, Rizzi N, Negri S, Imbriani M, Napolitano C, Lai FA, Priori SG (2006) Arrhythmogenesis in catecholaminergic polymorphic ventricular tachycardia: insights from a RyR2 R4496C knock-in mouse model. *Circ Res* 99:292–298. <https://doi.org/10.1161/01.RES.0000235869.50747.e1>
  213. De Ferrari GM, Dusi V, Spazzolini C, Bos JM, Abrams DJ, Berul CI, Crotti L, Davis AM, Eldar M, Kharlap M, Khoury A, Krahn AD, Leenhardt A, Moir CR, Odero A, Olde Nordkamp L, Paul T, Roses INF, Shkolnikova M, Till J, Wilde AA, Ackerman MJ, Schwartz PJ (2015) Clinical management of catecholaminergic polymorphic ventricular tachycardia: the role of left cardiac sympathetic denervation. *Circulation* 131:2185–2193. <https://doi.org/10.1161/CIRCULATIONAHA.115.015731>
  214. Hayashi M, Denjoy I, Extramiana F, Maltret A, Buisson NR, Lupoglazoff JM, Klug D, Hayashi M, Takatsuki S, Villain E, Kamblock J, Messali A, Guicheney P, Lunardi J, Leenhardt A (2009) Incidence and risk factors of arrhythmic events in catecholaminergic polymorphic ventricular tachycardia. *Circulation* 119:2426–2434. <https://doi.org/10.1161/CIRCULATIONAHA.108.829267>
  215. Ackerman MJ, Priori SG, Dubin AM, Kowey P, Linker NJ, Slotwiner D, Triedman J, Van Hare GF, Gold MR (2017) Beta-blocker therapy for long QT syndrome and catecholaminergic polymorphic ventricular tachycardia: are all beta-blockers equivalent? *Heart Rhythm* 14:e41–e44. <https://doi.org/10.1016/j.hrthm.2016.09.012>
  216. van der Werf C, Kannankeril PJ, Sacher F, Krahn AD, Viskin S, Leenhardt A, Shimizu W, Sumitomo N, Fish FA, Bhuiyan ZA, Willems AR, van der Veen MJ, Watanabe H, Laborde J, Hais-saguerre M, Knollmann BC, Wilde AA (2011) Flecainide therapy reduces exercise-induced ventricular arrhythmias in patients with catecholaminergic polymorphic ventricular tachycardia. *J Am Coll Cardiol* 57:2244–2254. <https://doi.org/10.1016/j.jacc.2011.01.026>
  217. Liu N, Denegri M, Ruan Y, Avelino-Cruz JE, Perissi A, Negri S, Napolitano C, Coetsee WA, Boyden PA, Priori SG (2011) Short communication: flecainide exerts an antiarrhythmic effect in a mouse model of catecholaminergic polymorphic ventricular tachycardia by increasing the threshold for triggered activity. *Circ Res* 109:291–295. <https://doi.org/10.1161/CIRCRESAHA.111.247338>
  218. Watanabe H, Chopra N, Laver D, Hwang HS, Davies SS, Roach DE, Duff HJ, Roden DM, Wilde AA, Knollmann BC (2009) Flecainide prevents catecholaminergic polymorphic ventricular tachycardia in mice and humans. *Nat Med* 15:380–383. <https://doi.org/10.1038/nm.1942>
  219. Kannankeril PJ, Moore JP, Cerrone M, Priori SG, Kertesz NJ, Ro PS, Batra AS, Kaufman ES, Fairbrother DL, Saarel EV, Etheridge SP, Kanter RJ, Carboni MP, Dzurik MV, Fountain D, Chen H, Ely EW, Roden DM, Knollmann BC (2017) Efficacy of flecainide in the treatment of catecholaminergic polymorphic ventricular tachycardia: a randomized clinical trial. *JAMA Cardiol* 2:759–766. <https://doi.org/10.1001/jamacardio.2017.1320>
  220. Collura CA, Johnson JN, Moir C, Ackerman MJ (2009) Left cardiac sympathetic denervation for the treatment of long QT syndrome and catecholaminergic polymorphic ventricular tachycardia using video-assisted thoracic surgery. *Heart Rhythm* 6:752–759. <https://doi.org/10.1016/j.hrthm.2009.03.024>
  221. Wilde AA, Bhuiyan ZA, Crotti L, Facchini M, De Ferrari GM, Paul T, Ferrandi C, Koolbergen DR, Odero A, Schwartz PJ (2008) Left cardiac sympathetic denervation for catecholaminergic polymorphic ventricular tachycardia. *N Engl J Med* 358:2024–2029. <https://doi.org/10.1056/NEJMoa0708006>
  222. Cohn JN, Levine TB, Olivari MT, Garberg V, Lura D, Francis GS, Simon AB, Rector T (1984) Plasma norepinephrine as a guide to prognosis in patients with chronic congestive heart failure. *N Engl J Med* 311:819–823. <https://doi.org/10.1056/NEJM198409273111303>
  223. Maisel AS, Scott NA, Motulsky HJ, Michel MC, Boublik JH, Rivier JE, Ziegler M, Allen RS, Brown MR (1989) Elevation of plasma neuropeptide Y levels in congestive heart failure. *Am J Med* 86:43–48. [https://doi.org/10.1016/0002-9343\(89\)90228-3](https://doi.org/10.1016/0002-9343(89)90228-3)
  224. Task Force of the European Society of Cardiology and the North American Society of Pacing and Electrophysiology (1996) Heart rate variability: standards of measurement, physiological interpretation and clinical use. *Circulation* 93:1043–1065
  225. Shaffer F, Ginsberg JP (2017) An overview of heart rate variability metrics and norms. *Front Public Health* 5:258. <https://doi.org/10.3389/fpubh.2017.00258>
  226. Fei L, Copie X, Malik M, Camm AJ (1996) Short- and long-term assessment of heart rate variability for risk stratification after acute myocardial infarction. *Am J Cardiol* 77:681–684. [https://doi.org/10.1016/s0002-9149\(97\)89199-0](https://doi.org/10.1016/s0002-9149(97)89199-0)
  227. Kleiger RE, Stein PK, Bigger JT Jr (2005) Heart rate variability: measurement and clinical utility. *Ann Noninvasive Electrocardiol* 10:88–101. <https://doi.org/10.1111/j.1542-474X.2005.10101.x>
  228. Jiang W, Hathaway WR, McNulty S, Larsen RL, Hansley KL, Zhang Y, O'Connor CM (1997) Ability of heart rate variability to predict prognosis in patients with advanced congestive heart failure. *Am J Cardiol* 80:808–811. [https://doi.org/10.1016/s0002-9149\(97\)00526-2](https://doi.org/10.1016/s0002-9149(97)00526-2)
  229. Nolan J, Batin PD, Andrews R, Lindsay SJ, Brooksby P, Mullen M, Baig W, Flapan AD, Cowley A, Prescott RJ, Neilson JM, Fox KA (1998) Prospective study of heart rate variability and mortality in chronic heart failure: results of the United Kingdom heart failure evaluation and assessment of risk trial (UK-heart). *Circulation* 98:1510–1516. <https://doi.org/10.1161/01.cir.98.15.1510>

230. Shaffer F, McCraty R, Zerr CL (2014) A healthy heart is not a metronome: an integrative review of the heart's anatomy and heart rate variability. *Front Psychol* 5:1040. <https://doi.org/10.3389/fpsyg.2014.01040>
231. Hadase M, Azuma A, Zen K, Asada S, Kawasaki T, Kamitani T, Kawasaki S, Sugihara H, Matsubara H (2004) Very low frequency power of heart rate variability is a powerful predictor of clinical prognosis in patients with congestive heart failure. *Circ J* 68:343–347. <https://doi.org/10.1253/circj.68.343>
232. Tsuji H, Venditti FJ Jr, Manders ES, Evans JC, Larson MG, Feldman CL, Levy D (1994) Reduced heart rate variability and mortality risk in an elderly cohort the Framingham heart study. *Circulation* 90:878–883. <https://doi.org/10.1161/01.cir.90.2.878>
233. Kember GC, Fenton GA, Armour JA, Kalyaniwalla N (2001) Competition model for aperiodic stochastic resonance in a Fitzhugh-Nagumo model of cardiac sensory neurons. *Phys Rev E Stat Nonlin Soft Matter Phys* 63:041911. <https://doi.org/10.1103/PhysRevE.63.041911>
234. Kember GC, Fenton GA, Collier K, Armour JA (2000) Aperiodic stochastic resonance in a hysteretic population of cardiac neurons. *Phys Rev E Stat Phys Plasmas Fluids Relat Interdiscip Topics* 61:1816–1824. <https://doi.org/10.1103/physreve.61.1816>
235. Akselrod S, Gordon D, Ubel FA, Shannon DC, Berger AC, Cohen RJ (1981) Power spectrum analysis of heart rate fluctuation: a quantitative probe of beat-to-beat cardiovascular control. *Science* 213:220–222. <https://doi.org/10.1126/science.6166045>
236. McCraty R, Shaffer F (2015) Heart rate variability: new perspectives on physiological mechanisms, assessment of self-regulatory capacity, and health risk. *Glob Adv Health Med* 4:46–61. <https://doi.org/10.7453/gahmj.2014.073>
237. Grossman P, Taylor EW (2007) Toward understanding respiratory sinus arrhythmia: relations to cardiac vagal tone, evolution and biobehavioral functions. *Biol Psychol* 74:263–285. <https://doi.org/10.1016/j.biopsycho.2005.11.014>
238. Billman GE (2013) The LF/HF ratio does not accurately measure cardiac sympatho-vagal balance. *Front Physiol* 4:26. <https://doi.org/10.3389/fphys.2013.00026>
239. Wehrwein EA, Joyner MJ (2013) Regulation of blood pressure by the arterial baroreflex and autonomic nervous system. *Handb Clin Neurol* 117:89–102. <https://doi.org/10.1016/B978-0-444-53491-0.00008-0>
240. Chapple MW, Li Z, Meyrelles SS, Ma X, Abboud FM (2001) Mechanisms determining sensitivity of baroreceptor afferents in health and disease. *Ann N Y Acad Sci* 940:1–19. <https://doi.org/10.1111/j.1749-6632.2001.tb03662.x>
241. La Rovere MT, Pinna GD, Raczk G (2008) Baroreflex sensitivity: measurement and clinical implications. *Ann Noninvasive Electrocardiol* 13:191–207. <https://doi.org/10.1111/j.1542-474X.2008.00219.x>
242. La Rovere MT, Bigger JT Jr, Marcus FI, Mortara A, Schwartz PJ (1998) Baroreflex sensitivity and heart-rate variability in prediction of total cardiac mortality after myocardial infarction. ATRAMI (Autonomic Tone And Reflexes After Myocardial Infarction) Investigators. *Lancet* 351:478–484. [https://doi.org/10.1016/s0140-6736\(97\)11144-8](https://doi.org/10.1016/s0140-6736(97)11144-8)
243. Lanfranchi PA, Somers VK (2002) Arterial baroreflex function and cardiovascular variability: interactions and implications. *Am J Physiol Regul Integr Comp Physiol* 283:R815–826. <https://doi.org/10.1152/ajpregu.00051.2002>
244. Mortara A, La Rovere MT, Pinna GD, Prpa A, Maestri R, Febo O, Pozzoli M, Opasich C, Tavazzi L (1997) Arterial baroreflex modulation of heart rate in chronic heart failure: clinical and hemodynamic correlates and prognostic implications. *Circulation* 96:3450–3458. <https://doi.org/10.1161/01.cir.96.10.3450>
245. Pinna GD, Maestri R, Capomolla S, Febo O, Robbi E, Cobelli F, La Rovere MT (2005) Applicability and clinical relevance of the transfer function method in the assessment of baroreflex sensitivity in heart failure patients. *J Am Coll Cardiol* 46:1314–1321. <https://doi.org/10.1016/j.jacc.2005.06.062>
246. Schmidt G, Malik M, Barthel P, Schneider R, Ulm K, Rolnitzky L, Camm AJ, Bigger JT Jr, Schomig A (1999) Heart-rate turbulence after ventricular premature beats as a predictor of mortality after acute myocardial infarction. *Lancet* 353:1390–1396. [https://doi.org/10.1016/S0140-6736\(98\)08428-1](https://doi.org/10.1016/S0140-6736(98)08428-1)
247. Huikuri HV, Exner DV, Kavanagh KM, Aggarwal SG, Mitchell LB, Messier MD, Becker D, Sheldon RS, Bloch Thomsen PE, Carisma IR (2010) Attenuated recovery of heart rate turbulence early after myocardial infarction identifies patients at high risk for fatal or near-fatal arrhythmic events. *Heart Rhythm* 7:229–235. <https://doi.org/10.1016/j.hrthm.2009.11.004>
248. Koyama J, Watanabe J, Yamada A, Koseki Y, Konno Y, Toda S, Shinozaki T, Miura M, Fukuchi M, Ninomiya M, Kagaya Y, Shirato K (2002) Evaluation of heart-rate turbulence as a new prognostic marker in patients with chronic heart failure. *Circ J* 66:902–907. <https://doi.org/10.1253/circj.66.902>
249. Wieland DM, Mangner TJ, Inbasekaran MN, Brown LE, Wu JL (1984) Adrenal medulla imaging agents: a structure-distribution relationship study of radiolabeled aralkylguanidines. *J Med Chem* 27:149–155. <https://doi.org/10.1021/jm00368a008>
250. Jacobson AF, Senior R, Cerqueira MD, Wong ND, Thomas GS, Lopez VA, Agostini D, Weiland F, Chandna H, Narula J, Investigators A-H (2010) Myocardial iodine-123 meta-iodobenzylguanidine imaging and cardiac events in heart failure. Results of the prospective ADMIRE-HF (AdreView myocardial imaging for risk evaluation in heart failure) study. *J Am Coll Cardiol* 55:2212–2221. <https://doi.org/10.1016/j.jacc.2010.01.014>
251. Merlet P, Valette H, Dubois-Rande JL, Moysé D, Duboc D, Dove P, Bourguignon MH, Benvenuti C, Duval AM, Agostini D et al (1992) Prognostic value of cardiac metaiodobenzylguanidine imaging in patients with heart failure. *J Nucl Med* 33:471–477
252. Nakata T, Miyamoto K, Doi A, Sasao H, Wakabayashi T, Kobayashi H, Tsuchihashi K, Shimamoto K (1998) Cardiac death prediction and impaired cardiac sympathetic innervation assessed by MIBG in patients with failing and nonfailing hearts. *J Nucl Cardiol* 5:579–590. [https://doi.org/10.1016/s1071-3581\(98\)90112-x](https://doi.org/10.1016/s1071-3581(98)90112-x)
253. Schofer J, Spielmann R, Schuchert A, Weber K, Schluter M (1988) Iodine-123 meta-iodobenzylguanidine scintigraphy: a noninvasive method to demonstrate myocardial adrenergic nervous system disintegrity in patients with idiopathic dilated cardiomyopathy. *J Am Coll Cardiol* 12:1252–1258. [https://doi.org/10.1016/0735-1097\(88\)92608-3](https://doi.org/10.1016/0735-1097(88)92608-3)
254. Asghar O, Arumugam P, Armstrong I, Ray S, Schmitt M, Malik RA (2017) Iodine-123 metaiodobenzylguanidine scintigraphy for the assessment of cardiac sympathetic innervation and the relationship with cardiac autonomic function in healthy adults using standardized methods. *Nucl Med Commun* 38:44–50. <https://doi.org/10.1097/MNM.0000000000000608>
255. Luisi AJ Jr, Suzuki G, Dekemp R, Haka MS, Toorongian SA, Canty JM Jr, Fallavollita JA (2005) Regional 11C-hydroxyephedrine retention in hibernating myocardium: chronic inhomogeneity of sympathetic innervation in the absence of infarction. *J Nucl Med* 46:1368–1374
256. Antman EM, Anbe DT, Armstrong PW, Bates ER, Green LA, Hand M, Hochman JS, Krumholz HM, Kushner FG, Lamas GA, Mullany CJ, Ornato JP, Pearle DL, Sloan MA, Smith SC Jr, American College of C, American Heart A, Canadian Cardiovascular S (2004) ACC/AHA guidelines for the management of patients with ST-elevation myocardial infarction—executive summary. A report of the American college of cardiology/

- American heart association task force on practice guidelines (writing committee to revise the 1999 guidelines for the management of patients with acute myocardial infarction). *J Am Coll Cardiol* 44:671–719. <https://doi.org/10.1016/j.jacc.2004.07.002>
257. Heidenreich PA, Bozkurt B, Aguilar D, Allen LA, Byun JJ, Colvin MM, Deswal A, Drazner MH, Dunlay SM, Evers LR, Fang JC, Fedson SE, Fonarow GC, Hayek SS, Hernandez AF, Khazanie P, Kittleson MM, Lee CS, Link MS, Milano CA, Nwacheta LC, Sandhu AT, Stevenson LW, Vardeny O, Vest AR, Yancy CW (2022) 2022 AHA/ACC/HFSA guideline for the management of heart failure: executive summary: a report of the American college of cardiology/American heart association joint committee on clinical practice guidelines. *J Am Coll Cardiol* 79:1757–1780. <https://doi.org/10.1016/j.jacc.2021.12.011>
  258. CIBIS Investigators and Committees (1999) The Cardiac Insufficiency Bisoprolol Study II (CIBIS-II): a randomised trial. *Lancet* 353:9–13
  259. MERIT-HF Study Group (1999) Effect of metoprolol CR/XL in chronic heart failure: metoprolol CR/XL randomised intervention trial in congestive heart failure (MERIT-HF). *Lancet* 353:2001–2007
  260. Packer M, Bristow MR, Cohn JN, Colucci WS, Fowler MB, Gilbert EM, Shusterman NH (1996) The effect of carvedilol on morbidity and mortality in patients with chronic heart failure. US carvedilol heart failure study group. *N Engl J Med* 334:1349–1355. <https://doi.org/10.1056/NEJM199605233342101>
  261. Vanhoutte PM, Gao Y (2013) Beta blockers, nitric oxide, and cardiovascular disease. *Curr Opin Pharmacol* 13:265–273. <https://doi.org/10.1016/j.coph.2012.12.002>
  262. Jaillon P (1990) Relevance of intrinsic sympathomimetic activity for beta blockers. *Am J Cardiol* 66:21C–23C. [https://doi.org/10.1016/0002-9149\(90\)90758-s](https://doi.org/10.1016/0002-9149(90)90758-s)
  263. McAinsh J, Cruickshank JM (1990) Beta-blockers and central nervous system side effects. *Pharmacol Ther* 46:163–197. [https://doi.org/10.1016/0163-7258\(90\)90092-g](https://doi.org/10.1016/0163-7258(90)90092-g)
  264. Zimmerman BG (1981) Adrenergic facilitation by angiotensin: does it serve a physiological function? *Clin Sci (Lond)* 60:343–348. <https://doi.org/10.1042/cs0600343>
  265. Peach MJ, Bumpus FM, Khairallah PA (1969) Inhibition of norepinephrine uptake in hearts by angiotensin II and analogs. *J Pharmacol Exp Ther* 167:291–299
  266. Huber G, Schuster F, Raasch W (2017) Brain renin-angiotensin system in the pathophysiology of cardiovascular diseases. *Pharmacol Res* 125:72–90. <https://doi.org/10.1016/j.phrs.2017.06.016>
  267. Reid IA (1992) Interactions between ANG II, sympathetic nervous system, and baroreceptor reflexes in regulation of blood pressure. *Am J Physiol* 262:E763–778. <https://doi.org/10.1152/ajpheart.1992.262.6.E763>
  268. Shi Z, Chen AD, Xu Y, Chen Q, Gao XY, Wang W, Zhu GQ (2009) Long-term administration of tempol attenuates postinfarct ventricular dysfunction and sympathetic activity in rats. *Pflugers Arch* 458:247–257. <https://doi.org/10.1007/s00424-008-0627-x>
  269. Wang HJ, Zhang F, Zhang Y, Gao XY, Wang W, Zhu GQ (2005) AT1 receptor in paraventricular nucleus mediates the enhanced cardiac sympathetic afferent reflex in rats with chronic heart failure. *Auton Neurosci* 121:56–63. <https://doi.org/10.1016/j.autneu.2005.07.003>
  270. Ma R, Schultz HD, Wang W (1999) Chronic central infusion of ANG II potentiates cardiac sympathetic afferent reflex in dogs. *Am J Physiol* 277:H15–22. <https://doi.org/10.1152/ajpheart.1999.277.1.H15>
  271. De Tommasi E, Iacoviello M, Romito R, Ceconi C, Guida P, Massari F, Francolini G, Bertocchi F, Ferrari R, Rizzon P, Pitzalis MV (2003) Comparison of the effect of valsartan and lisinopril on autonomic nervous system activity in chronic heart failure. *Am Heart J* 146:E17. [https://doi.org/10.1016/S0002-8703\(03\)00366-1](https://doi.org/10.1016/S0002-8703(03)00366-1)
  272. Grassi G, Cattaneo BM, Seravalle G, Lanfranchi A, Pozzi M, Morganti A, Carugo S, Mancia G (1997) Effects of chronic ACE inhibition on sympathetic nerve traffic and baroreflex control of circulation in heart failure. *Circulation* 96:1173–1179. <https://doi.org/10.1161/01.cir.96.4.1173>
  273. Hikosaka M, Yuasa F, Yuyama R, Mimura J, Kawamura A, Motohiro M, Iwasaki M, Sugiura T, Iwasaka T (2002) Candesartan and arterial baroreflex sensitivity and sympathetic nerve activity in patients with mild heart failure. *J Cardiovasc Pharmacol* 40:875–880. <https://doi.org/10.1097/00005344-200212000-00008>
  274. Takeishi Y, Atsumi H, Fujiwara S, Takahashi K, Tomoike H (1997) ACE inhibition reduces cardiac iodine-123-MIBG release in heart failure. *J Nucl Med* 38:1085–1089
  275. Solomon SD, Claggett B, Desai AS, Packer M, Zile M, Swedberg K, Rouleau JL, Shi VC, Starling RC, Kozan O, Dukat A, Lefkowitz MP, McMurray JJ (2016) Influence of ejection fraction on outcomes and efficacy of sacubitril/valsartan (LCZ696) in heart failure with reduced ejection fraction: the prospective comparison of ARNI with ACEI to determine impact on global mortality and morbidity in heart failure (PARADIGM-HF) trial. *Circ Heart Fail* 9:e002744. <https://doi.org/10.1161/CIRCHEARTFAILURE.115.002744>
  276. Boehmer AA, Schubert T, von Stuelpnagel L, Bauer A, Dobre B, Kaess BM, Ehrlich JR (2022) Abstract 13303: influence of ARNI on cardiac autonomic nervous system. *Circulation* 146:A13303
  277. Matthews VB, Elliot RH, Rudnicka C, Hricova J, Herat L, Schlaich MP (2017) Role of the sympathetic nervous system in regulation of the sodium glucose cotransporter 2. *J Hypertens* 35:2059–2068. <https://doi.org/10.1097/HJH.0000000000001434>
  278. Wan N, Rahman A, Hitomi H, Nishiyama A (2018) The effects of sodium-glucose cotransporter 2 inhibitors on sympathetic nervous activity. *Front Endocrinol (Lausanne)* 9:421. <https://doi.org/10.3389/fendo.2018.00421>
  279. Shimizu W, Kubota Y, Hoshika Y, Mozawa K, Tara S, Tokita Y, Yodogawa K, Iwasaki YK, Yamamoto T, Takano H, Tsukada Y, Asai K, Miyamoto M, Miyauchi Y, Kodani E, Ishikawa M, Maruyama M, Ogano M, Tanabe J, investigators Et (2020) Effects of empagliflozin versus placebo on cardiac sympathetic activity in acute myocardial infarction patients with type 2 diabetes mellitus: the EMBODY trial. *Cardiovasc Diabetol* 19:148. <https://doi.org/10.1186/s12933-020-01127-z>
  280. Cha YM, Oh J, Miyazaki C, Hayes DL, Rea RF, Shen WK, Asirvatham SJ, Kemp BJ, Hodge DO, Chen PS, Chareonthaitawee P (2008) Cardiac resynchronization therapy upregulates cardiac autonomic control. *J Cardiovasc Electrophysiol* 19:1045–1052. <https://doi.org/10.1111/j.1540-8167.2008.01190.x>
  281. Alvarez CK, Cronin E, Baker WL, Kluger J (2019) Heart failure as a substrate and trigger for ventricular tachycardia. *J Interv Card Electrophysiol* 56:229–247. <https://doi.org/10.1007/s10840-019-00623-x>
  282. Fantoni C, Raffa S, Regoli F, Giraldo F, La Rovere MT, Prentice J, Pastori F, Fratini S, Salerno-Uriarte JA, Klein HU, Auricchio A (2005) Cardiac resynchronization therapy improves heart rate profile and heart rate variability of patients with moderate to severe heart failure. *J Am Coll Cardiol* 46:1875–1882. <https://doi.org/10.1016/j.jacc.2005.06.081>
  283. Sarzi Braga S, La Rovere MT, Pedretti RF (2006) Baroreflex sensitivity normalization after cardiac resynchronization therapy. *Int J Cardiol* 109:118–120. <https://doi.org/10.1016/j.ijcard.2005.03.072>
  284. Sredniawa B, Lenarczyk R, Musialik-Lydkka A, Kowalski O, Kowalczyk J, Cebula S, Sliwiska A, Szulik M, Kalarus Z (2009)



- Effects of cardiac resynchronization therapy on heart rate turbulence. *Pacing Clin Electrophysiol* 32(Suppl 1):S90-93. <https://doi.org/10.1111/j.1540-8159.2008.02260.x>
285. Irie T, Yamakawa K, Hamon D, Nakamura K, Shivkumar K, Vaseghi M (2017) Cardiac sympathetic innervation via middle cervical and stellate ganglia and antiarrhythmic mechanism of bilateral stellectomy. *Am J Physiol Heart Circ Physiol* 312:392–405. <https://doi.org/10.1152/ajpheart.00644.2016>
  286. Schwartz PJ, Stone HL (1980) Left stellectomy in the prevention of ventricular fibrillation caused by acute myocardial ischemia in conscious dogs with anterior myocardial infarction. *Circulation* 62:1256–1265. <https://doi.org/10.1161/01.cir.62.6.1256>
  287. Vaseghi M, Barwad P, Malavassi Corrales FJ, Tandri H, Mathuria N, Shah R, Sorg JM, Gima J, Mandal K, Saenz Morales LC, Lokhandwala Y, Shivkumar K (2017) Cardiac sympathetic denervation for refractory ventricular arrhythmias. *J Am Coll Cardiol* 69:3070–3080. <https://doi.org/10.1016/j.jacc.2017.04.035>
  288. Dusi V, Gornbein J, Do DH, Sorg JM, Khakpour H, Krokhalava Y, Ajijola OA, Macias C, Bradfield JS, Buch E, Fujimura OA, Boyle NG, Yanagawa J, Lee JM, Shivkumar K, Vaseghi M (2021) Arrhythmic risk profile and outcomes of patients undergoing cardiac sympathetic denervation for recurrent monomorphic ventricular tachycardia after ablation. *J Am Heart Assoc* 10:e018371. <https://doi.org/10.1161/JAHA.120.018371>
  289. Conceicao-Souza GE, Pego-Fernandes PM, Cruz F, Guimaraes GV, Bacal F, Vieira ML, Grupi CJ, Giorgi MC, Consolim-Colombo FM, Negrao CE, Rondon MU, Moreira LF, Bocchi EA (2012) Left cardiac sympathetic denervation for treatment of symptomatic systolic heart failure patients: a pilot study. *Eur J Heart Fail* 14:1366–1373. <https://doi.org/10.1093/eurjhf/hfs132>
  290. Vaseghi M, Gima J, Kanaan C, Ajijola OA, Marmureanu A, Mahajan A, Shivkumar K (2014) Cardiac sympathetic denervation in patients with refractory ventricular arrhythmias or electrical storm: intermediate and long-term follow-up. *Heart Rhythm* 11:360–366. <https://doi.org/10.1016/j.hrthm.2013.11.028>
  291. Waddell-Smith KE, Ertresvaag KN, Li J, Chaudhuri K, Crawford JR, Hamill JK, Haydock D, Skinner JR, Cardiac Inherited Disease Group New Z (2015) Physical and psychological consequences of left cardiac sympathetic denervation in long-QT syndrome and catecholaminergic polymorphic ventricular tachycardia. *Circ Arrhythm Electrophysiol* 8:1151–1158. <https://doi.org/10.1161/CIRCEP.115.003159>
  292. Cha YM, Li X, Yang M, Han J, Wu G, Kapa SC, McLeod CJ, Noseworthy PA, Mulpuru SK, Asirvatham SJ, Brady PA, Rho RH, Friedman PA, Lee HC, Tian Y, Zhou S, Munger TM, Ackerman MJ, Shen WK (2019) Stellate ganglion block and cardiac sympathetic denervation in patients with inappropriate sinus tachycardia. *J Cardiovasc Electrophysiol* 30:2920–2928. <https://doi.org/10.1111/jce.14233>
  293. Sanghai S, Abbott NJ, Dewland TA, Henrikson CA, Elman MR, Wollenberg M, Ivie R, Gonzalez-Sotomayor J, Nazer B (2021) Stellate Ganglion blockade with continuous infusion versus single injection for treatment of ventricular arrhythmia storm. *JACC Clin Electrophysiol* 7:452–460. <https://doi.org/10.1016/j.jacep.2020.09.032>
  294. Fudim M, Qadri YJ, Waldron NH, Boertz-Marx RL, Ganesh A, Patel CB, Podgoreanu MV, Sun AY, Milano CA, Tong BC, Harpole DH Jr, Mathew JP, Piccini JP (2020) Stellate ganglion blockade for the treatment of refractory ventricular arrhythmias. *JACC Clin Electrophysiol* 6:562–571. <https://doi.org/10.1016/j.jacep.2019.12.017>
  295. Wittwer ED, Radosevich MA, Ritter M, Cha YM (2020) Stellate ganglion blockade for refractory ventricular arrhythmias: implications of ultrasound-guided technique and review of the evidence. *J Cardiothorac Vasc Anesth* 34:2245–2252. <https://doi.org/10.1053/j.jvca.2019.12.015>
  296. Basantwani S, Shinde SR, Tendolkar B (2019) Management of ventricular storm with thoracic epidural anesthesia. *Ann Card Anaesth* 22:439–441. [https://doi.org/10.4103/aca.ACA\\_98\\_18](https://doi.org/10.4103/aca.ACA_98_18)
  297. Do DH, Bradfield J, Ajijola OA, Vaseghi M, Le J, Rahman S, Mahajan A, Nogami A, Boyle NG, Shivkumar K (2017) Thoracic epidural anesthesia can be effective for the short-term management of ventricular tachycardia storm. *J Am Heart Assoc* 6:e007080. <https://doi.org/10.1161/JAHA.117.007080>
  298. Howard-Quijano K, Takamiya T, Dale EA, Yamakawa K, Zhou W, Buckley U, Mahajan A (2017) Effect of thoracic epidural anesthesia on ventricular excitability in a porcine model. *Anesthesiology* 126:1096–1106. <https://doi.org/10.1097/ALN.0000000000001613>
  299. Bourke T, Vaseghi M, Michowitz Y, Sankhla V, Shah M, Swapna N, Boyle NG, Mahajan A, Narasimhan C, Lokhandwala Y, Shivkumar K (2010) Neuraxial modulation for refractory ventricular arrhythmias: value of thoracic epidural anesthesia and surgical left cardiac sympathetic denervation. *Circulation* 121:2255–2262. <https://doi.org/10.1161/CIRCULATIONAHA.109.929703>
  300. Fujisawa Y, Nagai Y, Lei B, Nakano D, Fukui T, Hitomi H, Mori H, Masaki T, Nishiyama A (2011) Roles of central renin-angiotensin system and afferent renal nerve in the control of systemic hemodynamics in rats. *Hypertens Res* 34:1228–1232. <https://doi.org/10.1038/hr.2011.115>
  301. Zhou H, Li Y, Xu Y, Liu H, Lai Y, Tan K, Liu X, Ou Z, Chen W, Du H, Liu Z, Yin Y (2022) Mapping renal innervations by renal nerve stimulation and characterizations of blood pressure response patterns. *J Cardiovasc Transl Res* 15:29–37. <https://doi.org/10.1007/s12265-021-10149-1>
  302. Symplicity HTNI (2011) Catheter-based renal sympathetic denervation for resistant hypertension: durability of blood pressure reduction out to 24 months. *Hypertension* 57:911–917. <https://doi.org/10.1161/HYPERTENSIONAHA.110.163014>
  303. Symplicity HTNI, Esler MD, Krum H, Sobotka PA, Schlaich MP, Schmieder RE, Bohm M (2010) Renal sympathetic denervation in patients with treatment-resistant hypertension (The Symplicity HTN-2 Trial): a randomised controlled trial. *Lancet* 376:1903–1909. [https://doi.org/10.1016/S0140-6736\(10\)62039-9](https://doi.org/10.1016/S0140-6736(10)62039-9)
  304. Bhatt DL, Kandzari DE, O'Neill WW, D'Agostino R, Flack JM, Katzen BT, Leon MB, Liu M, Mauri L, Negoita M, Cohen SA, Oparil S, Rocha-Singh K, Townsend RR, Bakris GL, SYMPPLICITY HTN-3 Investigators (2014) A controlled trial of renal denervation for resistant hypertension. *N Engl J Med* 370:1393–1401. <https://doi.org/10.1056/NEJMoa1402670>
  305. Bohm M, Kario K, Kandzari DE, Mahfoud F, Weber MA, Schmieder RE, Tsioufis K, Pocock S, Konstantinidis D, Choi JW, East C, Lee DP, Ma A, Ewen S, Cohen DL, Wilensky R, Devireddy CM, Lea J, Schmid A, Weil J, Agdirlioglu T, Reedus D, Jefferson BK, Reyes D, D'Souza R, Sharp ASP, Sharif F, Fahy M, DeBruin V, Cohen SA, Brar S, Townsend RR, Investigators SH-OMP (2020) Efficacy of catheter-based renal denervation in the absence of antihypertensive medications (SPYRAL HTN-OFF MED Pivotal): a multicentre, randomised, sham-controlled trial. *Lancet* 395:1444–1451. [https://doi.org/10.1016/S0140-6736\(20\)30554-7](https://doi.org/10.1016/S0140-6736(20)30554-7)
  306. Kandzari DE, Bohm M, Mahfoud F, Townsend RR, Weber MA, Pocock S, Tsioufis K, Tousoulis D, Choi JW, East C, Brar S, Cohen SA, Fahy M, Pilcher G, Kario K, Investigators SH-OMT (2018) Effect of renal denervation on blood pressure in the presence of antihypertensive drugs: 6-month efficacy and safety results from the SPYRAL HTN-ON MED proof-of-concept randomised trial. *Lancet* 391:2346–2355. [https://doi.org/10.1016/S0140-6736\(18\)30951-6](https://doi.org/10.1016/S0140-6736(18)30951-6)

307. Townsend RR, Mahfoud F, Kandzari DE, Kario K, Pocock S, Weber MA, Ewen S, Tsioufis K, Tousoulis D, Sharp ASP, Watkins AF, Schmieder RE, Schmid A, Choi JW, East C, Walton A, Hopper I, Cohen DL, Wilensky R, Lee DP, Ma A, Devireddy CM, Lea JP, Lurz PC, Fengler K, Davies J, Chapman N, Cohen SA, DeBruin V, Fahy M, Jones DE, Rothman M, Bohm M (2017) Catheter-based renal denervation in patients with uncontrolled hypertension in the absence of antihypertensive medications (SPYRAL HTN-OFF MED): a randomised, sham-controlled, proof-of-concept trial. *Lancet* 390:2160–2170. [https://doi.org/10.1016/S0140-6736\(17\)32281-X](https://doi.org/10.1016/S0140-6736(17)32281-X)
308. de Jong MR, Adiyaman A, Gal P, Smit JJ, Delnoy PP, Heeg JE, van Hasselt BA, Lau EO, Persu A, Staessen JA, Ramdat Misier AR, Steinberg JS, Elvan A (2016) Renal nerve stimulation-induced blood pressure changes predict ambulatory blood pressure response after renal denervation. *Hypertension* 68:707–714. <https://doi.org/10.1161/HYPERTENSIONAHA.116.07492>
309. Hoogerwaard AF, Adiyaman A, de Jong MR, Smit JJ, Heeg JE, van Hasselt B, Elvan A (2021) Renal nerve stimulation: complete versus incomplete renal sympathetic denervation. *Blood Press* 30:376–385. <https://doi.org/10.1080/08037051.2021.1982376>
310. Hawson J, Harmer JA, Cowan M, Virk S, Campbell T, Bennett RG, Anderson RD, Kalman J, Lee G, Kumar S (2021) Renal denervation for the management of refractory ventricular arrhythmias: a systematic review. *JACC Clin Electrophysiol* 7:100–108. <https://doi.org/10.1016/j.jacep.2020.07.019>
311. Zhang WH, Zhou QN, Lu YM, Li YD, Zhang L, Zhang JH, Xing Q, Lv WK, Cheng XC, Zhang GG, Wang XS, Gu Q, Lou X, Guli B, Tang BP, Zhou XH (2018) Renal denervation reduced ventricular arrhythmia after myocardial infarction by inhibiting sympathetic activity and remodeling. *J Am Heart Assoc* 7:e009938. <https://doi.org/10.1161/JAHA.118.009938>
312. Sabbah HN, Gupta RC, Imai M, Irwin ED, Rastogi S, Rossing MA, Kieval RS (2011) Chronic electrical stimulation of the carotid sinus baroreflex improves left ventricular function and promotes reversal of ventricular remodeling in dogs with advanced heart failure. *Circ Heart Fail* 4:65–70. <https://doi.org/10.1161/CIRCHEARTFAILURE.110.955013>
313. Zucker IH, Hackley JF, Cornish KG, Hiser BA, Anderson NR, Kieval R, Irwin ED, Serdar DJ, Peuler JD, Rossing MA (2007) Chronic baroreceptor activation enhances survival in dogs with pacing-induced heart failure. *Hypertension* 50:904–910. <https://doi.org/10.1161/HYPERTENSIONAHA.107.095216>
314. Abraham WT, Zile MR, Weaver FA, Butter C, Ducharme A, Halbach M, Klug D, Lovett EG, Muller-Ehmsen J, Schafer JE, Senni M, Swarup V, Wachter R, Little WC (2015) Baroreflex activation therapy for the treatment of heart failure with a reduced ejection fraction. *JACC Heart Fail* 3:487–496. <https://doi.org/10.1016/j.jchf.2015.02.006>
315. Bisognano JD, Bakris G, Nadim MK, Sanchez L, Kroon AA, Schafer J, de Leeuw PW, Sica DA (2011) Baroreflex activation therapy lowers blood pressure in patients with resistant hypertension: results from the double-blind, randomized, placebo-controlled rheos pivotal trial. *J Am Coll Cardiol* 58:765–773. <https://doi.org/10.1016/j.jacc.2011.06.008>
316. Gronda E, Seravalle G, Trevano FQ, Costantino G, Casini A, Alsheraei A, Lovett EG, Vanoli E, Mancica G, Grassi G (2015) Long-term chronic baroreflex activation: persistent efficacy in patients with heart failure and reduced ejection fraction. *J Hypertens* 33:1704–1708. <https://doi.org/10.1097/HJH.0000000000000603>
317. Zile MR, Lindenfeld J, Weaver FA, Zannad F, Galle E, Rogers T, Abraham WT (2020) Baroreflex activation therapy in patients with heart failure with reduced ejection fraction. *J Am Coll Cardiol* 76:1–13. <https://doi.org/10.1016/j.jacc.2020.05.015>
318. de Leeuw PW, Anima T, Lovett E, Sica D, Bisognano J, Haller H, Kroon AA (2015) Bilateral or unilateral stimulation for baroreflex activation therapy. *Hypertension* 65:187–192. <https://doi.org/10.1161/HYPERTENSIONAHA.114.04492>
319. Hamann JJ, Ruble SB, Stolen C, Wang M, Gupta RC, Rastogi S, Sabbah HN (2013) Vagus nerve stimulation improves left ventricular function in a canine model of chronic heart failure. *Eur J Heart Fail* 15:1319–1326. <https://doi.org/10.1093/eurjhf/hft118>
320. Li M, Zheng C, Sato T, Kawada T, Sugimachi M, Sunagawa K (2004) Vagal nerve stimulation markedly improves long-term survival after chronic heart failure in rats. *Circulation* 109:120–124. <https://doi.org/10.1161/01.CIR.0000105721.71640.DA>
321. Sabbah HN, Ilsar I, Zaretsky A, Rastogi S, Wang M, Gupta RC (2011) Vagus nerve stimulation in experimental heart failure. *Heart Fail Rev* 16:171–178. <https://doi.org/10.1007/s10741-010-9209-z>
322. Premchand RK, Sharma K, Mittal S, Monteiro R, Dixit S, Libbus I, DiCarlo LA, Ardell JL, Rector TS, Amurthur B, KenKnight BH, Anand IS (2014) Autonomic regulation therapy via left or right cervical vagus nerve stimulation in patients with chronic heart failure: results of the ANTHEM-HF trial. *J Card Fail* 20:808–816. <https://doi.org/10.1016/j.cardfail.2014.08.009>
323. Schwartz PJ, De Ferrari GM (2009) Vagal stimulation for heart failure: background and first in-man study. *Heart Rhythm* 6:S76–81. <https://doi.org/10.1016/j.hrthm.2009.08.012>
324. Gold MR, Van Veldhuisen DJ, Hauptman PJ, Borggrefe M, Kubo SH, Lieberman RA, Milasinovic G, Berman BJ, Djordjevic S, Neelaguru S, Schwartz PJ, Starling RC, Mann DL (2016) Vagus nerve stimulation for the treatment of heart failure: the INOVATE-HF trial. *J Am Coll Cardiol* 68:149–158. <https://doi.org/10.1016/j.jacc.2016.03.525>
325. Zannad F, De Ferrari GM, Tuinenburg AE, Wright D, Brugada J, Butter C, Klein H, Stolen C, Meyer S, Stein KM, Ramuzat A, Schubert B, Daum D, Neuzil P, Botman C, Castel MA, D'Onofrio A, Solomon SD, Wold N, Ruble SB (2015) Chronic vagal stimulation for the treatment of low ejection fraction heart failure: results of the NEural Cardiac TherApy foR Heart Failure (NECTAR-HF) randomized controlled trial. *Eur Heart J* 36:425–433. <https://doi.org/10.1093/eurheartj/ehu345>
326. Anand IS, Konstam MA, Klein HU, Mann DL, Ardell JL, Gregory DD, Massaro JM, Libbus I, DiCarlo LA, Udelson JJE, Butler J, Parker JD, Teerlink JR (2020) Comparison of symptomatic and functional responses to vagus nerve stimulation in ANTHEM-HF, INOVATE-HF, and NECTAR-HF. *ESC Heart Fail* 7:75–83. <https://doi.org/10.1002/ehf2.12592>
327. Ardell JL, Nier H, Hammer M, Southerland EM, Ardell CL, Beaumont E, KenKnight BH, Armour JA (2017) Defining the neural fulcrum for chronic vagus nerve stimulation: implications for integrated cardiac control. *J Physiol* 595:6887–6903. <https://doi.org/10.1113/JP274678>

Springer Nature or its licensor (e.g. a society or other partner) holds exclusive rights to this article under a publishing agreement with the author(s) or other rightsholder(s); author self-archiving of the accepted manuscript version of this article is solely governed by the terms of such publishing agreement and applicable law.