

# UCSF

## UC San Francisco Previously Published Works

### Title

Within-household clustering of genetically related Plasmodium falciparum infections in a moderate transmission area of Uganda

### Permalink

<https://escholarship.org/uc/item/6xr6f44x>

### Journal

Malaria Journal, 20(1)

### ISSN

1475-2875

### Authors

Briggs, Jessica  
Kuchta, Alison  
Murphy, Max  
[et al.](#)

### Publication Date

2021-12-01

### DOI

10.1186/s12936-021-03603-7


Peer reviewed

RESEARCH

Open Access



# Within-household clustering of genetically related *Plasmodium falciparum* infections in a moderate transmission area of Uganda

Jessica Briggs<sup>1\*</sup> , Alison Kuchta<sup>1</sup>, Max Murphy<sup>1</sup>, Sofonias Tessema<sup>1</sup>, Emmanuel Arinaitwe<sup>2</sup>, John Rek<sup>2</sup>, Anna Chen<sup>1</sup>, Joaniter I. Nankabirwa<sup>2,3</sup>, Chris Drakeley<sup>4</sup>, David Smith<sup>5</sup>, Teun Bousema<sup>6</sup>, Moses Kanya<sup>2,3</sup>, Isabel Rodriguez-Barraquer<sup>1</sup>, Sarah Staedke<sup>7</sup>, Grant Dorsey<sup>1</sup>, Philip J. Rosenthal<sup>1</sup> and Bryan Greenhouse<sup>1</sup>

## Abstract

**Background:** Evaluation of genetic relatedness of malaria parasites is a useful tool for understanding transmission patterns, but patterns are not easily detectable in areas with moderate to high malaria transmission. To evaluate the feasibility of detecting genetic relatedness in a moderate malaria transmission setting, relatedness of *Plasmodium falciparum* infections was measured in cohort participants from randomly selected households in the Kihhi sub-county of Uganda (annual entomological inoculation rate of 27 infectious bites per person).

**Methods:** All infections detected via microscopy or *Plasmodium*-specific loop mediated isothermal amplification from passive and active case detection during August 2011-March 2012 were genotyped at 26 microsatellite loci, providing data for 349 samples from 230 participants living in 80 households. Pairwise genetic relatedness was calculated using identity by state (IBS).

**Results:** As expected, genetic diversity was high (mean heterozygosity [ $H_e$ ] = 0.73), and the majority (76.5%) of samples were polyclonal. Despite the high genetic diversity, fine-scale population structure was detectable, with significant spatiotemporal clustering of highly related infections. Although the difference in malaria incidence between households at higher (mean 1127 metres) versus lower elevation (mean 1015 metres) was modest (1.4 malaria cases per person-year vs. 1.9 per person-year, respectively), there was a significant difference in multiplicity of infection (2.2 vs. 2.6,  $p = 0.008$ ) and, more strikingly, a higher proportion of highly related infections within households (6.3% vs. 0.9%,  $p = 0.0005$ ) at higher elevation compared to lower elevation.

**Conclusions:** Genetic data from a relatively small number of diverse, multi-allelic loci reflected fine scale patterns of malaria transmission. Given the increasing interest in applying genetic data to augment malaria surveillance, this study provides evidence that genetic data can be used to inform transmission patterns at local spatial scales even in moderate transmission areas.

**Keywords:** Malaria, Genotyping, Uganda, Transmission, Microsatellite, Clustering, Molecular epidemiology

## Background

Falciparum malaria remains one of the most important infectious diseases in the world, causing significant morbidity and mortality. More than 90% of malaria deaths occur in sub-Saharan Africa, with the majority of these in children less than 5 years old [1]. Considerable progress

\*Correspondence: jessica.briggs@ucsf.edu

<sup>1</sup> Department of Medicine, University of California San Francisco, San Francisco, CA, USA

Full list of author information is available at the end of the article



© The Author(s) 2021. This article is licensed under a Creative Commons Attribution 4.0 International License, which permits use, sharing, adaptation, distribution and reproduction in any medium or format, as long as you give appropriate credit to the original author(s) and the source, provide a link to the Creative Commons licence, and indicate if changes were made. The images or other third party material in this article are included in the article's Creative Commons licence, unless indicated otherwise in a credit line to the material. If material is not included in the article's Creative Commons licence and your intended use is not permitted by statutory regulation or exceeds the permitted use, you will need to obtain permission directly from the copyright holder. To view a copy of this licence, visit <http://creativecommons.org/licenses/by/4.0/>. The Creative Commons Public Domain Dedication waiver (<http://creativecommons.org/publicdomain/zero/1.0/>) applies to the data made available in this article, unless otherwise stated in a credit line to the data.

has been made in the past decade in reducing the burden of malaria in Africa, largely due to interventions such as long-lasting insecticidal nets (LLINs), indoor residual spraying (IRS), and the use of artemisinin-based combination therapy [2]. However, the effectiveness of such large-scale interventions is non-uniform in part due to significant heterogeneity in baseline malaria transmission, demonstrating the need for targeted control and elimination programs that prioritize the most successful techniques [3]. To most efficiently target interventions, the ability to stratify risk within a population is necessary, potentially including an understanding of fine-scale transmission. Traditional methods of evaluating transmission lack the resolution to differentiate the burden of disease over small spatial scales, especially in high transmission areas like Uganda, where an estimated 12 million clinical cases are treated annually in the public health system alone [4].

As with most infectious diseases, malaria transmission within a geographical area is heterogeneous and can vary greatly between villages and between households in a village [5–10]. Variations in malaria burden may reflect differences in vector distribution by habitat, human-vector contact, and human host factors [5, 8]. More specifically, spatial clustering of malaria cases is well-described, which can be observed at scales as small as the household level [8, 9]. While it has been proposed that parasite genetic data can be used to identify active clusters of infection, or “hotspots”, and to assess their contribution to onward transmission, these techniques are best established in areas of relatively low transmission, and it is less clear if these techniques can identify clustering of related infections in moderate to high transmission settings. To evaluate whether parasite genetic data can be used to elucidate heterogeneity in malaria transmission at fine spatial scales in a moderate transmission area, this study analysed data from 26 microsatellites in 349 *Plasmodium falciparum* infections identified in participants living in 80 households in Kihhi, Uganda.

## Methods

### Study design and participants

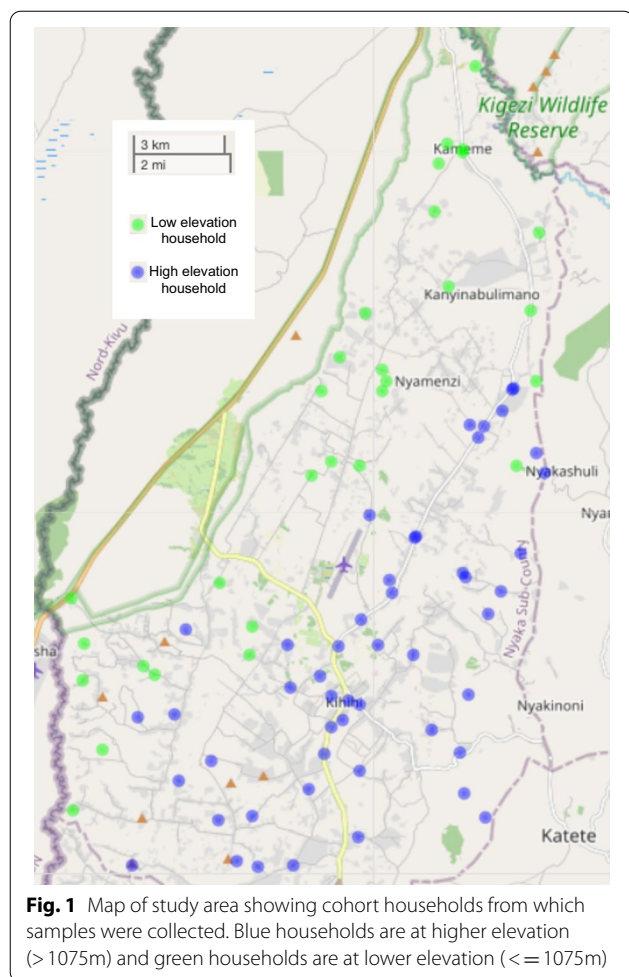
Samples for this study were obtained from a previously described cohort study conducted in Kihhi sub-county, Kanungu District in southwestern Uganda, an area spanning approximately  $12 \times 24$  km<sup>2</sup> in southwestern Uganda [11–13]. Kihhi sub-county is predominantly rural and has a moderate malaria transmission intensity, with an estimated annual entomological inoculation rate (EIR) of 27 in 2012 [13]. Briefly, participants were recruited from 80 randomly selected households within the catchment area of the participating health facility. All children aged 6 months to 10 years and a primary adult caretaker (at

least 18 years of age) in a household were enrolled. Participants agreed to come to the study clinic for any febrile illness and to avoid anti-malarial medications administered outside the study. Study participants attended the clinic at enrollment and then every 90 days for routine visits. Participants who reported a history of fever in the previous 24 hours or had a tympanic temperature  $\geq 38.0$  °C and had a positive blood smear were diagnosed with malaria and treated with artemether-lumefantrine. At routine visits, participants received a history and physical examination and blood was obtained for thick blood smear and dried blood spots (DBS). DBS specimens were prepared by spotting whole blood onto filter paper and drying completely. If a participant was microscopy negative at a routine visit, loop-mediated isothermal amplification (LAMP) was performed to assess for sub-microscopic parasitaemia.

For this analysis, DBS samples from cohort participants who were parasitaemic by microscopy or LAMP from August 2011 to March 2012 were included. In addition, DBS samples were included from additional household adults (not enrolled in the cohort) who provided a one-time dried blood spot sample within 30 days of household enrollment for genotyping. Median elevation of households from which samples were collected was 1075 m (min 949 – max 1311 m). For simplicity, participants living in households above the median elevation were defined for the purposes of this study as living at higher elevation, while those at or below the median were considered to be at lower elevation (Fig. 1). Entomological surveys, in which mosquitoes were collected once a month from each household using miniature CDC light traps, as described previously, were also performed [12]. Malaria incidence and entomological data are reported for all households in the cohort for the first full year of the study (August 2011–August 2012).

### Laboratory methods

To determine presence of parasitaemia, samples were evaluated by microscopy and *Plasmodium*-specific LAMP as previously described [14]. Briefly, thick blood smears were prepared with 2% Giemsa. Light microscopy was performed by an experienced laboratory technician who was not involved in direct patient care. A second technician performed quality control for detection of parasites for all microscopy results and a third technician resolved discrepancies if needed. LAMP was performed on all DBS specimens for which a participant had a negative blood smear. DNA was extracted for LAMP using saponin-Chelex extraction, as previously described [14]. LAMP was performed using Eiken Loopamp™ Malaria Pan Detection Kit reaction tubes [15]. For all samples positive by light microscopy or LAMP, parasite density



was quantified using varATS qPCR as described previously [16]. Samples with parasite density > 5 parasites/ $\mu$ L of blood were then genotyped using 26 microsatellite loci [17]. Two rounds of PCR were conducted for all loci, and PCR products were diluted and sized by capillary electrophoresis using an Applied Biosystems 3730xl DNA Analyzer. Alleles were sized from electropherograms using microSPAT software, which includes a probabilistic algorithm to filter artifacts [18].

#### Data analysis

All data were analysed using R (version 3.5.0) with R studio (version 1.1.453; Rstudio team). Expected heterozygosity ( $H_e$ ) was calculated by using the formula  $H_e = [n/(n-1)] [(1 - \sum P_i^2)]$ , where  $n$  = sample size and  $P_i$  = allele frequency. The mean multiplicity of infection (MOI) was calculated by dividing the total number of clones by the number of PCR-positive samples for each marker gene. Pairwise time was calculated as the difference in days between obtaining the two samples. Pairwise

spatial distance was calculated as the Euclidian distance in metres between the households from which samples were obtained. Pairwise identity by state (IBS) was calculated from allele similarity between isolates using a modified IBS metric to measure parasite relatedness [19–21]. Briefly, IBS was computed based on the number of shared alleles between pairs of infections in both monoclonal and polyclonal infections. The overall pairwise IBS was calculated as  $\frac{1}{n} \sum_{i=1}^n \frac{S_i}{X_i Y_i}$ , where  $n$  = number of genotyped loci,  $S_i$  = total number of shared alleles at locus  $i$  between samples  $X$  and  $Y$ ;  $X_i$  = number of alleles in sample  $X$  at locus  $i$  and  $Y_i$  = number of alleles in sample  $Y$  at locus  $i$ . An IBS of  $\geq 0.6$  was used as a cut off for the most highly related samples, as per Fig. 2a. This is similar to other studies in which a cut off of  $\geq 0.5$  was used [20, 21].

Negative binomial regression was used to estimate malaria incidence and to calculate incident rate ratios (IRR). Comparisons of proportions were performed using generalized estimating equations to account for repeated measures. Pairwise distance and time means were compared using the Wilcoxon test for independent samples.

## Results

### Transmission intensity by elevation

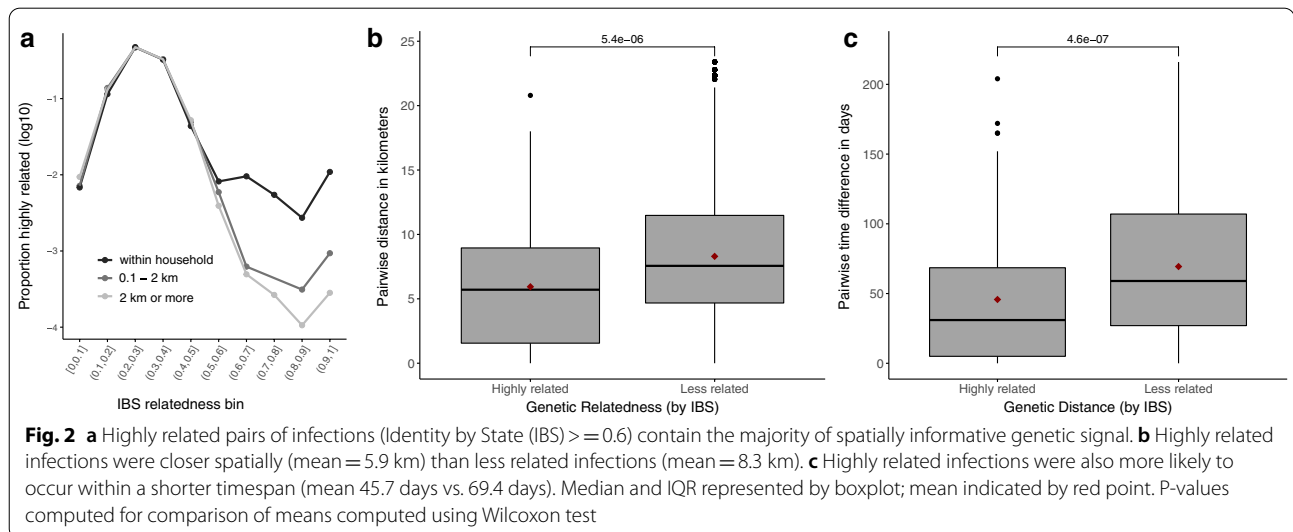
Despite the small size of the study area, there were noticeable differences in transmission intensity comparing cohort households above the median elevation (higher elevation) *versus* below the median (lower elevation). Using data from all children in the cohort through one year, there was lower malaria incidence in children living at higher compared to lower elevation (1.4 versus 1.9 episodes per person-year (ppy) (IRR = 0.73, 95% CI: 0.53–1.00). In addition, the daily human biting rate for anopheline mosquitoes (dHBR) was considerably lower in households at higher versus lower elevations (2.01 vs. 8.9,  $p = 0.08$ ), adding evidence to support higher transmission at lower elevation. Thus, the data suggest modest but meaningful differences in transmission within the study area by both clinical and entomologic measures, with transmission higher in houses at lower elevation.

### Study population and genotyping

A total of 408 samples with  $\geq 5$  parasites/ $\mu$ L of blood from 80 households were genotyped using 26 microsatellite markers. Of these, 349 (85.5%) samples were successfully genotyped at 15 or more loci and included in subsequent analysis; these samples were collected from 230 unique individuals (142 children and 88 adults) (Table 1). Of these, 128 (51.2%) children and 4 (4.0%) adults reported and/or had objective fever at the time of their sampled infections.

**Table 1** Descriptive statistics of 349 successfully genotyped *P. falciparum* infections from the Kihihi Subcounty of Uganda

	Children (0.5–11 years)	Adults (> 18 years)	Total
Number of individuals	142	88	230
Samples (coverage at $\geq 15$ markers)	250	99	349
Symptomatic infections, n (%)	128 (51.2%)	4 (4.0%)	132 (37.8%)
Microscopy positive, n (%)	161 (64.4%)	5 (5.1%)	166 (47.6%)
Monoclonal infections, n (%)	75 (30.0%)	9 (7.1%)	82 (23.5%)
	Higher Elevation	Lower Elevation	Total
Unique Households	50	30	80
Avg number of children/household (mean)	1.6	2.1	1.8
Average child age in years (mean)	5.8	5.5	5.6
Monoclonal infections, n (%)	43 (24.9%)	39 (22.2%)	82 (23.5%)
Mean Heterozygosity	0.72	0.72	0.73
Mean Multiplicity of Infection	2.2	2.6	2.4



### Complexity and genetic diversity of infections

The majority of genotyped infections were polyclonal (76.5%) with a mean MOI of 2.4 (range=1–6, Additional file 1: Fig. S1 and Table S1). Children tended to have less complex infections, with 30.0% monoclonal infections in children compared to only 7.1% monoclonal infections in adults ( $p=0.0002$ , Table 1). Samples from lower elevation households had a higher mean MOI than samples from the higher elevation households (2.6 vs. 2.2,  $p=0.008$ ); this was driven by differences in MOI between children at lower vs. higher elevation (2.4 vs. 2.1,  $p=0.024$ ). However, populations at both elevations had a similar proportion of monoclonal infections: 24.9% for higher elevation and 22.2% for lower elevation samples

( $p=0.56$ ). The overall population level genetic diversity was high in Kihihi, with a mean heterozygosity ( $H_e$ ) of 0.73 (range: 0.37–0.91) with no difference between elevations or between adults and children.

### Spatial scale of genetic relatedness

Pairwise genetic relatedness was determined between all genotyped samples obtained from different individuals, including those with polyclonal infections, resulting in 60,568 pairwise comparisons. Of these, there were 733 intra-household pairs and 3,306 pairs of monoclonal infections. Infections from the same household were more likely to be genetically related than infections from

participants that did not (Fig. 2a); a similar result was seen when limiting this analysis to only monoclonal samples. There was suggestion of a small increase in relatedness between infections from participants in different households living <2 km vs. >= 2km apart, though statistical power to evaluate this question was limited due to small numbers. A total of 93 (0.14%) infection pairs were highly related (IBS >= 0.6). Highly related pairs showed significant spatiotemporal clustering compared to those with IBS < 0.6. (Fig. 2b, c). 79/93 (84.9%) of highly related infections were from participants who lived within 10km of each other, and 78/93 (83.9%) of highly related infections occurred within 90 days of each other.

**Within-population and within-household transmission**

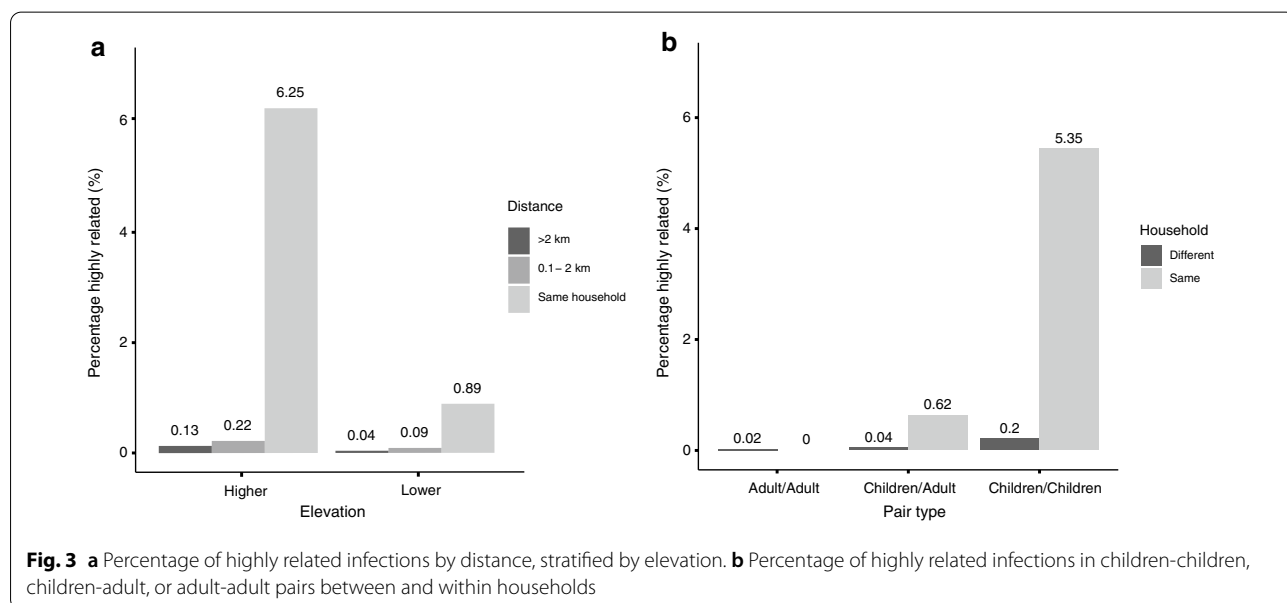
On a finer spatial scale, a higher proportion of highly related infections was found in members of the same household compared to individuals living in different households (2.9% vs. 0.1%,  $p < 0.0001$ ), suggesting that transmission-related infections cluster within households. To test the hypothesis that highly related infections were more likely to be observed within the same household where transmission was lower, the proportion of highly related infections within households was compared by elevation. As hypothesized, a higher proportion of highly related pairs of infections was found within households at higher elevation compared to lower elevation (6.3% vs. 0.9%,  $p = 0.0005$ ) (Fig. 3a).

There were too few within-household highly related infection pairs ( $n = 21$ ) to evaluate within-household transmission events. However, the proportions of highly related infections in child-child, child-adult, and

adult-adult paired samples both within and between households were calculated. In child-child pairwise comparisons, the proportion of highly related infections was higher than in comparisons for child-adult or adult-adult pairs (Fig. 3), although the greater MOI observed in adults complicated interpretation of this result. However, when the analysis was restricted to monoclonal samples, there was again a higher proportion of highly related samples in child-child pairs than in child-adult pairs (0.5% vs. 0.06%,  $p = 0.005$ ), and no adult-adult pairs were highly related. As might be expected given other evidence for within-household clustering, this pattern was more pronounced within households, with 5.4% of child-child pairs within households highly related compared to 0.2% of child-child pairs from different households ( $p < 0.0001$ ) (Fig. 3). When the analysis was restricted to monoclonal samples, this pattern held, with 6.8% of child-child pairs within-households highly related compared to 0.4% of child-child pairs from different households ( $p < 0.0001$ ).

**Discussion**

To evaluate the potential to detect genetic relatedness of malaria parasites in a moderate malaria transmission setting, relatedness of infections was measured using 26 microsatellites in Kihhi sub-county, southwestern Uganda. As expected, genetic diversity was high and the majority of samples were polyclonal. Despite the high diversity, spatiotemporal structure in genotypes was detectable, with significant spatial and temporal clustering of highly related infections identified in both higher and lower transmission areas of Kihhi, including marked clustering of related infections within households.





Despite modest differences in malaria incidence found at higher vs. lower elevations within the study site, there were differences in MOI and spatial clustering of infections, reflecting underlying differences in transmission identified using detailed entomologic measures. Of note, statistical power for both of these molecular metrics was higher than that observed for malaria incidence. Thus, these data demonstrate the potential utility for genetic measures of parasite diversity in stratifying malaria transmission, even in moderate to high transmission settings where the majority of infections are polyclonal.

While it is clear that there is heterogeneity in malaria transmission at all levels of endemicity, this phenomenon is most obvious in areas of low transmission [8, 22]. Therefore, genetic epidemiology of malaria often focuses on low transmission settings. For example, to look at the contribution of importation *versus* local transmission in Namibia, Tessema et al. showed that microsatellite data could capture strong spatial signals over both local and regional scales in a study with limited travel history and without cross-border mobile phone data. In a study conducted along the Thai-Myanmar border, single nucleotide polymorphism (SNP) barcode data were used to show that identity by descent (IBD), a measure of parasite relatedness, declined with increasing inter-clinic distance [23]. In Zambia, a country targeted for elimination, Pringle et al. used microsatellite genotyping of samples collected through reactive case detection (RCD) to show that participants from the same RCD event harboured more genetically related parasites than those from different RCD events [20]. Two other studies in moderate to high transmission areas showed clustering of infections at distances of <1km [24] or at the household level [25], using SNP genotyping and amplicon sequencing, respectively. Other molecular epidemiology studies of malaria in settings of various endemicity have failed to observe any parasite population genetic structure, either geographically or temporally [26–28]. Notably, using only 349 samples from 80 households, within-household clustering of infections was detected, suggesting that genetic data in this setting reflect what is known about clustering of malaria at the household level from epidemiological studies [22]. These data show that by focusing on the most highly related infections in a population, as prior studies have done in lower transmission settings, micro-epidemiological patterns can be revealed even in a moderate transmission setting.

Additionally, this study showed that relatedness of infections between children was greater than that of infections between children and adults or infections between adults. This pattern was evident both between and within households, but was much more pronounced within households. This pattern may be due

to age-related immunity, since adults may more readily suppress or clear a proportion of parasites to which they had been previously exposed. Alternatively, because children harbour higher parasite densities than adults, they may be more likely to transmit to other children, including those in the same household [29]. A recent study by Nelson et al. that employed targeted amplicon deep sequencing to genotype parasites found that symptomatic children more commonly shared haplotypes with asymptotically infected household members; however, household members were not stratified by age in this study [25]. Understanding fine-scale transmission networks and whether household clustering is driven by transmission between household members or whether household members acquire related infections from exposure to the same vector would be helpful in determining the best method for spatially targeting malaria interventions in lower transmission settings, including interventions targeting the human parasite reservoir.

The study had some limitations. For example, IBS is a biased measure of parasite relatedness if one is attempting to compare IBS measures across different studies or populations, because it is sensitive to allele frequencies [30]. An advantage of this measure, however, is its simplicity and applicability to polyclonal samples, and it has been used successfully in other studies [20, 21]. Ideally, computationally tractable but more generalizable metrics of relatedness applicable to multiallelic, polyclonal samples would provide more robust analyses from this type of data. Unfortunately, methods to calculate such metrics, e.g. unbiased estimates of identity by descent (IBD) from these types of data are not currently available. Another limitation is the small sample size, with only 349 genotyped infections, which did not allow analyses to determine the dynamics of within-household transmission. However, this sample size was sufficient to observe clustering of highly related infections and differentiate neighbouring geographic regions that had only modest differences in transmission intensity. Notably, the ability to detect signal in small sample sizes is an advantage in studies that aim to utilize genetic data for surveillance due to lower cost and easier collection. Another strength of this study was the ability to capture information from polyclonal infections, leveraging the high diversity and multiallelic nature of the microsatellite loci. Each time an analysis in this study was replicated using only monoclonal samples, a similar but less well-defined pattern was found, suggesting that polyclonal samples contribute important information and help to better define aspects of population structure relevant for transmission. However, while the multiallelic, high-diversity nature of microsatellite loci has some advantages, this type of marker can be cumbersome to evaluate, particularly

when considering larger numbers of loci to more accurately define relatedness between infections. Other genotyping techniques that are able to resolve multiallelic loci, such as multiplex amplicon or “microhaplotype” sequencing, can provide rich data from polyclonal infections and leverage current sequencing technologies to more easily allow evaluation of larger numbers of loci, providing higher resolution to evaluate transmission particularly in moderate-high transmission settings [25, 31–34]. While these methods are more expensive and require more extensive laboratory and bioinformatics structure than the methods used in this study, they may be preferred techniques in the future as sequencing costs continue to decline.

## Conclusions

In this study, spatiotemporal clustering of malaria infections was identified in a moderate transmission setting by analysing all infections and focusing on those which were highly related. There was also evidence of clustering of related malaria infections within households, which was more evident in areas of lower transmission. Importantly, genetic data were able to clearly discriminate transmission intensity in this small study area where only modest differences in malaria incidence were evident. Given the increasing interest in applying genetic data to augment malaria surveillance, this study provides evidence that genetic data can be used to inform transmission patterns at local spatial scales even in moderate transmission areas.

## Supplementary Information

The online version contains supplementary material available at <https://doi.org/10.1186/s12936-021-03603-7>.

**Additional file 1: Table S1.** Diversity at each microsatellite marker. Avg  $H_e$  0.73. **Figure S1.** MOI distribution. A) Overall distribution of MOI B) Distribution of MOI at lower elevation C) Distribution of MOI at higher elevation.

## Acknowledgements

We would like to acknowledge all of the PRISM participants for their involvement in the study and all study staff who helped to successfully complete the study.

## Authors' contributions

JB, AK, and BG conceived and planned the study. JB and AK took the lead in writing the manuscript. JB, AK, MM, and ST analysed the data and contributed to the interpretation of the results. EA, JR, JN, and MK contributed to study supervision in Uganda. AC performed the experiments. CD, DS, TB, IRB, SS, GD, PR, and BG provided critical feedback and helped shape the analysis and manuscript. All authors read and approved the final manuscript.

## Funding

Funding was provided by the National Institutes of Health as part of the International Centers of Excellence in Malaria Research (ICMER) program

(U19AI089674). The funders had no role in study design, data collection and analysis, decision to publish, or preparation of the manuscript.

## Availability of data and materials

The full PRISM epidemiological dataset is available at ClinEpiDb.org at: [https://clinepidb.org/ce/app/record/dataset/DS\\_0ad509829e](https://clinepidb.org/ce/app/record/dataset/DS_0ad509829e). The microsatellite data used in this study can be found at: [https://github.com/EPPIcenter/Kihihi\\_MS\\_genotyping](https://github.com/EPPIcenter/Kihihi_MS_genotyping).

## Ethics approval and consent to participate

This study was approved by the Makerere University School of Medicine Research and Ethics Committee (ref. 2011 – 167), the Uganda National Council for Science and Technology (ref. HS-1019), the University of California, San Francisco Committee on Human Research (ref. 11-05995), and the London School of Hygiene and Tropical Medicine Ethics Committee (ref. 5943). Written informed consents (with assent from minors) were obtained from all study participants before enrollment.

## Competing interests

The authors declare that no competing interests exist.

## Author details

<sup>1</sup> Department of Medicine, University of California San Francisco, San Francisco, CA, USA. <sup>2</sup> Infectious Diseases Research Collaboration, Kampala, Uganda. <sup>3</sup> Department of Medicine, Makerere University College of Health Sciences, Kampala, Uganda. <sup>4</sup> Department of Immunology and Infection, London School of Hygiene and Tropical Medicine, London, UK. <sup>5</sup> Institute for Health Metrics & Evaluation, University of Washington, Seattle, WA, USA. <sup>6</sup> Department of Medical Microbiology, Radboud University Nijmegen Medical Centre, Nijmegen, The Netherlands. <sup>7</sup> Department of Clinical Research, London School of Hygiene and Tropical Medicine, London, UK.

Received: 19 November 2020 Accepted: 22 January 2021

Published online: 02 February 2021

## References

- WHO. World malaria report 2019. Geneva: World Health Organization; 2019. <https://www.who.int/publications-detail-redirect/9789241565721>.
- Bhatt S, Weiss DJ, Cameron E, Bisanzio D, Mappin B, Dalrymple U, et al. The effect of malaria control on *Plasmodium falciparum* in Africa between 2000 and 2015. *Nature*. 2015;526:207–11.
- Bannister-Tyrrell M, Verdonck K, Hausmann-Muela S, Gryseels C, Muela Ribera J, Peeters Grietens K. Defining micro-epidemiology for malaria elimination: systematic review and meta-analysis. *Malar J*. 2017;16:164.
- Republic of Uganda. The Uganda Malaria Reduction Strategic Plan 2014–2020. Malaria Control Programme; 2015.
- Greenwood BM. The microepidemiology of malaria and its importance to malaria control. *Trans R Soc Trop Med Hyg*. 1989;83 Suppl:25–9.
- Carter R, Mendis KN, Roberts D. Spatial targeting of interventions against malaria. *Bull World Health Organ*. 2000;78:1401–11.
- Bousema T, Drakeley C, Gesase S, Hashim R, Magesa S, Mosha F, et al. Identification of hot spots of malaria transmission for targeted malaria control. *J Infect Dis*. 2010;201:1764–74.
- Bousema T, Griffin JT, Sauerwein RW, Smith DL, Churcher TS, Takken W, et al. Hitting hotspots: spatial targeting of malaria for control and elimination. *PLoS Med*. 2012;9:e1001165.
- Bejon P, Williams TN, Liljander A, Noor AM, Wambua J, Ogada E, et al. Stable and unstable malaria hotspots in longitudinal cohort studies in Kenya. *PLoS Med*. 2010;7:e1000304.
- Bejon P, Williams TN, Nyundo C, Hay SI, Benz D, Gething PW, et al. A micro-epidemiological analysis of febrile malaria in Coastal Kenya showing hotspots within hotspots. *eLife*. 2014;3:e02130.
- Katureebe A, Zinszer K, Arinaitwe E, Rek J, Kakande E, Charland K, et al. Measures of malaria burden after long-lasting insecticidal net distribution and indoor residual spraying at three sites in Uganda: a prospective observational study. *PLoS Med*. 2016;13:e1002167.
- Kanya MR, Arinaitwe E, Wanzira H, Katureebe A, Barusya C, Kigozi SP, et al. Malaria transmission, infection, and disease at three sites with varied



- transmission intensity in Uganda: Implications for malaria control. *Am J Trop Med Hyg.* 2015;92:903–12.
13. Yeka A, Nankabirwa J, Mpimbaza A, Kigozi R, Arinaitwe E, Drakeley C, et al. Factors associated with malaria parasitaemia, anemia and serological responses in a spectrum of epidemiological settings in Uganda. *PLoS One.* 2015;10:e0118901.
  14. Rek J, Katrak S, Obasi H, Nayebare P, Katureebe A, Kakande E, et al. Characterizing microscopic and submicroscopic malaria parasitaemia at three sites with varied transmission intensity in Uganda. *Malar J.* 2016;15:470.
  15. Katrak S, Murphy M, Nayebare P, Rek J, Smith M, Arinaitwe E, et al. Performance of loop-mediated isothermal amplification for the identification of submicroscopic *Plasmodium falciparum* infection in Uganda. *Am J Trop Med Hyg.* 2017;97:1777–81.
  16. Hofmann N, Mwingira F, Shekalaghe S, Robinson LJ, Mueller I, Felger I. Ultra-sensitive detection of *Plasmodium falciparum* by amplification of multi-copy subtelomeric targets. *PLoS Med.* 2015;12:e1001788.
  17. Liu Y, Tessema SK, Murphy M, Xu S, Schwartz A, Wang W, et al. Confirmation of the absence of local transmission and geographic assignment of imported falciparum malaria cases to China using microsatellite panel. *Malar J.* 2020;19:244.
  18. Maxwell Murphy. Greenhouse-Lab/MicroSPAT: v2.0.3. Zenodo; 2019. <https://zenodo.org/record/2564160>. Accessed 29 Sept 2020.
  19. Jacquard A. The genetic structure of populations. Berlin Heidelberg: Springer-Verlag; 1974. <https://www.springer.com/gp/book/9783642884177>.
  20. Pringle JC, Tessema S, Wesolowski A, Chen A, Murphy M, Carpi G, et al. Genetic evidence of focal *Plasmodium falciparum* transmission in a pre-elimination setting in Southern Province, Zambia. *J Infect Dis.* 2019;219:1254–63.
  21. Tessema S, Wesolowski A, Chen A, Murphy M, Wilhelm J, Mupiri A-R, et al. Using parasite genetic and human mobility data to infer local and cross-border malaria connectivity in Southern Africa. *eLife.* 2019;8:e43510.
  22. Stresman G, Bousema T, Cook J. Malaria hotspots: is there epidemiological evidence for fine-scale spatial targeting of interventions? *Trends Parasitol.* 2019;35:822–34.
  23. Taylor AR, Schaffner SF, Cerqueira GC, Nkhoma SC, Anderson TJC, Sriprawat K, et al. Quantifying connectivity between local *Plasmodium falciparum* malaria parasite populations using identity by descent. *PLoS Genet.* 2017;13:e1007065.
  24. Omedo I, Mogeni P, Bousema T, Rockett K, Amambua-Ngwa A, Oyier I, et al. Micro-epidemiological structuring of *Plasmodium falciparum* parasite populations in regions with varying transmission intensities in Africa. *Wellcome Open Res.* 2017;2:10.
  25. Nelson CS, Sumner KM, Freedman E, Saelens JW, Obala AA, Mangeni JN, et al. High-resolution micro-epidemiology of parasite spatial and temporal dynamics in a high malaria transmission setting in Kenya. *Nat Commun.* 2019;10:5615.
  26. Zhu X, Zhao P, Wang S, Liu F, Liu J, Wang J, et al. Analysis of Pvama1 genes from China-Myanmar border reveals little regional genetic differentiation of *Plasmodium vivax* populations. *Parasit Vectors.* 2016;9:614.
  27. Ingasia LA, Cheruiyot J, Okoth SA, Andagalu B, Kamau E. Genetic variability and population structure of *Plasmodium falciparum* parasite populations from different malaria ecological regions of Kenya. *Infect Genet Evol.* 2016;39:372–80.
  28. Omedo I, Mogeni P, Rockett K, Kamau A, Hubbart C, Jeffreys A, et al. Geographic-genetic analysis of *Plasmodium falciparum* parasite populations from surveys of primary school children in Western Kenya. *Wellcome Open Res.* 2017;2:29.
  29. Gonçalves BP, Kapulu MC, Sawa P, Guelbéogo WM, Tiono AB, Grignard L, et al. Examining the human infectious reservoir for *Plasmodium falciparum* malaria in areas of differing transmission intensity. *Nat Commun.* 2017;8:1133.
  30. Taylor AR, Jacob PE, Neafsey DE, Buckee CO. Estimating relatedness between malaria parasites. *Genetics.* 2019;212:1337–51.
  31. Aydemir O, Janko M, Hathaway NJ, Verity R, Mwandagaliwa MK, Tshetu AK, et al. Drug-resistance and population structure of *Plasmodium falciparum* across the Democratic Republic of Congo using high-throughput molecular inversion probes. *J Infect Dis.* 2018;14:218:946–55.
  32. Lerch A, Koepfli C, Hofmann NE, Messerli C, Wilcox S, Kattenberg JH, et al. Development of amplicon deep sequencing markers and data analysis pipeline for genotyping multi-clonal malaria infections. *BMC Genom.* 2017;18:864.
  33. Tessema SK, Hathaway NJ, Teyssier NB, Murphy M, Chen A, Aydemir O, et al. Sensitive, highly multiplexed sequencing of microhaplotypes from the *Plasmodium falciparum* heterozygote. *J Infect Dis.* 2020;jiaa527 (Online ahead of print).
  34. Jacob CG, Thuy-Nhien N, Mayxay M, Maude RJ, Quang HH, Hongvanthong B, et al. Genetic surveillance in the Greater Mekong Subregion and South Asia to support malaria control and elimination. *medRxiv.* 2020.

## Publisher's note

Springer Nature remains neutral with regard to jurisdictional claims in published maps and institutional affiliations.

Ready to submit your research? Choose BMC and benefit from:

- fast, convenient online submission
- thorough peer review by experienced researchers in your field
- rapid publication on acceptance
- support for research data, including large and complex data types
- gold Open Access which fosters wider collaboration and increased citations
- maximum visibility for your research: over 100M website views per year

At BMC, research is always in progress.

Learn more [biomedcentral.com/submissions](https://biomedcentral.com/submissions)

