

# Lawrence Berkeley National Laboratory

## LBL Publications

### Title

Bioconversion of cellulose into bisabolene using *Ruminococcus flavefaciens* and *Rhodospiridium toruloides*

### Permalink

<https://escholarship.org/uc/item/6xt0536n>

### Authors

Walls, Laura E

Otoupal, Peter

Ledesma-Amaro, Rodrigo

et al.

### Publication Date

2023

### DOI

10.1016/j.biortech.2022.128216

### Copyright Information

This work is made available under the terms of a Creative Commons Attribution License, available at <https://creativecommons.org/licenses/by/4.0/>

Peer reviewed



## Bioconversion of cellulose into bisabolene using *Ruminococcus flavefaciens* and *Rhodospiridium toruloides*

Laura E. Walls<sup>a,b</sup>, Peter Otopal<sup>c,d,e</sup>, Rodrigo Ledesma-Amaro<sup>f</sup>, Sharon B. Velasquez-Orta<sup>g</sup>, John M. Gladden<sup>c,d,e</sup>, Leonardo Rios-Solis<sup>a,b,h,\*</sup>

<sup>a</sup> Institute for Bioengineering, School of Engineering, University of Edinburgh, Edinburgh EH9 3BF, UK

<sup>b</sup> Centre for Synthetic and Systems Biology (SynthSys), University of Edinburgh, Edinburgh EH9 3BF, UK

<sup>c</sup> Joint BioEnergy Institute, Lawrence Berkeley National Laboratory, Emeryville, CA 94608, USA

<sup>d</sup> Agile BioFoundry, Department of Energy, Emeryville, CA 94608, USA

<sup>e</sup> Biomaterials and Biomufacturing Department, Sandia National Laboratories, Livermore, CA 94551, USA

<sup>f</sup> Department of Bioengineering and Imperial College Centre for Synthetic Biology, Imperial College London, London SW7 2AZ, UK

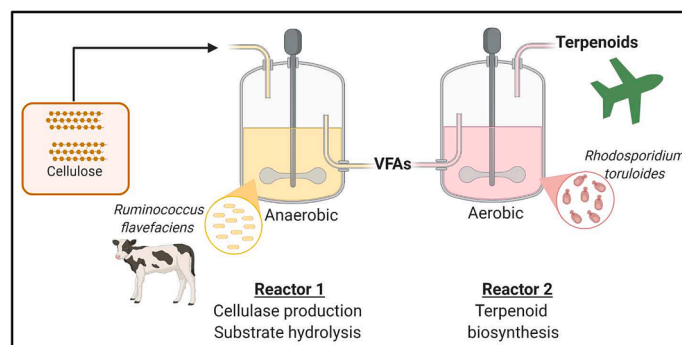
<sup>g</sup> School of Engineering, Merz Court, Newcastle University, Newcastle upon Tyne NE1 7RU, UK

<sup>h</sup> School of Natural and Environmental Sciences, Molecular Biology and Biotechnology Division, Newcastle University, Newcastle Upon Tyne NE1 7RU, UK

### HIGHLIGHTS

- Sequential bioprocess demonstrated effective conversion of cellulose to bisabolene.
- Maximum bisabolene titre of 7.8 g/L achieved, the highest reported microbial titre.
- Organic acids are an effective carbon source for *R. toruloides*.
- Bisabolene titres improved 7.4-fold through pH controlled organic acid feeding.
- Fermentation of cellulose by *R. flavefaciens* yielded up to 5.1 g/L organic acids.

### GRAPHICAL ABSTRACT



### ARTICLE INFO

#### Keywords:

*Rhodospiridium toruloides*  
*Ruminococcus flavefaciens*  
 Biofuel  
 Lignocellulose  
 Bisabolene  
 Rumen bacteria  
 Metabolic engineering  
 Sequential bioreactors  
 Microscale tools

### ABSTRACT

In this study, organic acids were demonstrated as a promising carbon source for bisabolene production by the non-conventional yeast, *Rhodospiridium toruloides*, at microscale with a maximum titre of  $1055 \pm 7$  mg/L. A 125-fold scale-up of the optimal process, enhanced bisabolene titres 2.5-fold to 2606 mg/L. Implementation of a pH controlled organic acid feeding strategy at this scale lead to a further threefold improvement in bisabolene titre to 7758 mg/L, the highest reported microbial titre. Finally, a proof-of-concept sequential bioreactor approach was investigated. Firstly, the cellulolytic bacterium *Ruminococcus flavefaciens* was employed to ferment cellulose, yielding 4.2 g/L of organic acids. *R. toruloides* was subsequently cultivated in the resulting supernatant, producing  $318 \pm 22$  mg/L of bisabolene. This highlights the feasibility of a sequential bioprocess for the

\* Corresponding author at: School of Natural and Environmental Sciences, Molecular Biology and Biotechnology Division, Newcastle University, Newcastle Upon Tyne, NE1 7RU, UK.

E-mail address: [Leo.Rios@ncl.ac.uk](mailto:Leo.Rios@ncl.ac.uk) (L. Rios-Solis).

<https://doi.org/10.1016/j.biortech.2022.128216>

Received 7 September 2022; Received in revised form 24 October 2022; Accepted 25 October 2022

Available online 5 November 2022

0960-8524/© 2022 The Author(s). Published by Elsevier Ltd. This is an open access article under the CC BY license (<http://creativecommons.org/licenses/by/4.0/>).

bioconversion of cellulose, into biojet fuel candidates. Future work will focus on enhancing organic acid yields and the use of real lignocellulosic feedstocks to further enhance bisabolene production.

## 1. Introduction

As the fastest mode of transport, the aircraft is a major driver for globalisation and economic growth. However, sustainable development is a major ongoing challenge in the sector. Although the introduction of low emission electric vehicles has been demonstrated as a viable alternative to petroleum based fuels for powering small road vehicles, state-of-the-art lithium ion batteries have an energy density of around 250 Wh/kg (KOKAM, 2019), just 2% of that of the aircraft fuel, Jet A. This capacity is simply insufficient for powering larger vehicles such as those required for aviation, shipping and heavy goods vehicles and as a result reliance on liquid fuels is likely to continue for some time (The Royal Academy of Engineering, 2017).

Currently, biodiesel, which is produced through the transesterification of vegetable oils using homogeneous or heterogeneous catalysts (Ma et al., 2021), is the predominant liquid biofuel in Europe. Homogeneous alkaline or acid catalysts are typically preferred due to their ease of use, high selectivity and low cost, however, they are not reusable and require extensive downstream processing to remove (Li et al., 2022; Ma et al., 2021). Heterogeneous metal organic framework catalysts have gained attention recently as they can be recovered and reused, greatly improving sustainability (Li et al., 2022; Ma et al., 2021). Biodiesel's comparable calorific value and cetane number to mineral diesel along with its good lubricity renders it excellent alternative for use in diesel engines. The higher viscosity, density and poor cold flow properties of biodiesel compared to Jet A, however, limit its suitability for use in aviation. The development of alternative, advanced liquid biofuels with properties similar to petroleum based aviation fuels is therefore crucial meeting the ambitious renewable energy targets recently introduced across Europe (The European Parliament and of the Council of the European Union, 2018; Walls and Rios-Solis, 2020) and the United States (The White House, 2021). With comparable chain lengths, high energy densities and favourable cold flow properties, isoprenoid derived advanced biojet fuels demonstrate excellent potential in this context (Walls and Rios-Solis, 2020). The bioconversion of low cost renewable materials into such compounds by engineered microbial hosts is an auspicious production route.

Cellulose, as the most abundant organic material on earth (Carere et al., 2008), holds great promise as a sustainable feedstock for the production of such advanced isoprenoid biofuels. However, the complex crystalline structure thwarts its metabolism by most conventional microbial hosts. As a result, a series of pre-treatment, cellulase production and hydrolysis steps are typically required prior to fermentation of the resulting monomeric sugars (Torres-Sebastián et al., 2021). As traditional approaches involve the use of separate unit operations for each step, economic feasibility is limited for the production of low value chemicals such as biofuels (Navarrete et al., 2020). In addition, 30–50 mg of commercial enzymes are required to hydrolyse each gram of crystalline cellulose (Ali et al., 2016), further increasing operational costs. Process intensification is an innovative engineering approach, which aims to dramatically improve efficiency through considerable reductions in plant volume (ideally 100 to 1000-fold) (Boodhoo and Harvey, 2013). In the context of lignocellulosic biofuel production, process intensification has been achieved through simultaneous saccharification and fermentation (SSF) approaches (Olofsson et al., 2008), in which the enzymatic feedstock degradation and biofuel production steps are combined in a single unit. More recently, a novel one-pot process for the pretreatment, saccharification and bioconversion of sorghum biomass into bisabolene using *R. toruloides* (Sundstrom et al., 2018). Whilst these intensified processes demonstrate considerable progress, the high cost of the required commercial cellulase enzymes

still hinders economic feasibility.

Consolidated bioprocessing (CBP) is an innovative approach, which has gained substantial interest due to its potential to simplify and reduce the costs associated with cellulosic biofuel production. In a CBP cellulose production, saccharification and fermentation all take place inside a single unit operation. Ruminants are an excellent example of a natural consolidated bioprocess and can be considered the “largest commercial fermentation process” ( $2 \times 10^{11}$  L) (Seshadri et al., 2018; Weimer, 1992; Weimer et al., 2009). Ruminants are capable of effective bioconversion of cellulose-rich biomass into valuable products (i.e. meat and milk) within a single process unit (See Supplementary Material).

Within the rumen, a consortium of bacteria, protozoa, archaea and fungi efficiently break down lignocellulosic biomass. The predominant products are volatile fatty acids, which are metabolised by the ruminant, along with CO<sub>2</sub> and methane. As a result, the rumen is gaining interest as a source of CBP hosts. *Ruminococcus flavefaciens*, for example, is one of the most abundant cellulolytic bacteria in bovine and equine rumen (Jullian et al., 1999; Ozbayram et al., 2018) and is capable of efficient cellulose and hemicellulose fermentation. The predominant products of cellulose fermentation by the species are succinic and acetic acids (Latham and Wolin, 1977). Although, organic acids such as acetic acid are not suitable for advanced liquid biofuel applications (Zuroff et al., 2013), they have been demonstrated as a potential carbon source for oleaginous yeasts (Huang et al., 2016; Liu et al., 2017). The oleaginous yeast, *Rhodospiridium toruloides* (also known as *Rhodotorula toruloides*), for example, was successfully cultivated with 4–20% acetic acid as the sole carbon source, for the production of lipids (Huang et al., 2016). *R. toruloides* has also gained recent interest as a model host for the production of advanced isoprenoid derived biofuel compounds such as bisabolene, *epi*-isozizaene and prespatane (Geiselman et al., 2020; Kirby et al., 2021). With properties synonymous with petroleum derived fuels, such compounds hold great promise as “drop-in” replacement jet fuels. As a carotogenic yeast, flux through the mevalonate pathway is considerably higher in these species compared to the traditionally employed yeast, *Saccharomyces cerevisiae*. As a result, through integration of bisabolene synthase genes alone, bisabolene titres of up to 2.2 g/L could be achieved (Kirby et al., 2021). In comparison, extensive mevalonate pathway engineering was required to facilitate the maximum reported titre of 0.99 g/L in *S. cerevisiae* (Peralta-Yahya et al., 2011). In addition, *R. toruloides* is more suited to lignocellulosic hydrolysates as it is capable of simultaneous xylose and glucose metabolism (Zhuang et al., 2019) and has a much greater tolerance for inhibitory compounds such as vanillin and furfural (Yaegashi et al., 2017), which are often generated during the pretreatment step.

A bottleneck in CBP approaches, however, is the stark differences in cultivation requirements of each step (Navarrete et al., 2020; Walls and Rios-Solis, 2020). Most rumen bacteria such as *R. flavefaciens* are obligate anaerobes and grow well at around 37 °C. Most oleaginous yeasts like *R. toruloides*, on the other hand are obligate aerobes and are typically cultivated at a lower temperature of around 30 °C. One potential solution is a sequential bioreactor approach (Navarrete et al., 2020; Walls and Rios-Solis, 2020). To reduce the metabolic burden associated with the expression of the heterologous pathways required for feedstock degradation and product biosynthesis, two microorganisms can be employed, each engineered for optimal performance of one step (Navarrete et al., 2020). Co-cultivation of the two microorganisms in the same reactor may result in competition or necessitate the use of sub-optimal operational conditions due to the different requirements of the two species. A sequential bioreactor approach, in which cellulose degradation occurs in the first reactor, followed by bioconversion of the resulting organic acids into the biofuel of interest in a second reactor

could effectively overcome these critical challenges.

In this study, a proof-of-concept sequential bioprocess was developed for the bioconversion of cellulose to bisabolene using rumen bacteria and non-conventional yeast. The feasibility of succinic and acetic acids as a carbon source for bisabolene production by engineered *R. toruloides* cell factories was assessed in detail at micro- (~2 mL) and mini-bioreactor (250–500 mL) scale. The ability of *R. flavefaciens* to ferment microcrystalline cellulose under strict anaerobic conditions was also evaluated. Finally, the two steps were combined to test the proposed sequential bioprocess.

## 2. Materials and methods

### 2.1. Microbial strains

The yeast strains used in this study were originally derived from *R. toruloides* IFO0880, mating type A2. Strain GB2 (IFO0880/ $P_{GAPDH}$ -BIS- $T_{NOS}$ ,  $P_{ANT}$ -BIS- $T_{NOS}$ ) was engineered for the production of bisabolene through the integration of ten copies of bisabolene synthase into IFO0880 under the control of the native promoter  $P_{GAPDH}$  and six copies under the control of  $P_{ANT}$ , as described in detail previously (Kirby et al., 2021). Strain GB2.485 (GB2/ $P_{ANT}$ -SpHMGR- $T_{NOS}$ - $P_{SKPI}$ -McMK- $T_{SKP1}$ - $P_{DUF}$ -SpPMK- $T_{DUF}$ ) was then constructed with the aim of improving bisabolene production by GB2 through targeted over-expression of key mevalonate pathway genes, HMGR, MK and PMK in GB2 (Kirby et al., 2021). Further details on strains GB2 and GB2.485 can be found within the Agile BioFoundry Strain Registry (<http://public-registry.agilebiofoundry.org>), registry IDs ABFPUB\_000311 and ABFPUB\_000319, respectively. Strain EIZS2 (IFO0880/ $P_{GAPDH}$ -RtEIZS-NAT<sup>R</sup>) was engineered for the production of *epi*-isozizaene through the integration of an *epi*-isozizaene synthase from *Streptomyces coelicolor* codon optimised for expression by *R. toruloides*, under the control of the native GAPDH promoter into IFO0880 as described previously (Geiselman et al., 2020). Construction of the prespatane producing strain, PPS5 (IFO0880/ $P_{ANT}$ -RtPPS- $P_{TEF1}$ -RtPPS-NAT<sup>R</sup>/ $P_{TEF1}$ -RtPPS-HYG<sup>R</sup>), was achieved through integration of a prespatane synthase gene from *Laurencia pacifica*, codon optimised for expression by *R. toruloides* under the control of native promoters ANT and TEF1 as described in detail previously (Geiselman et al., 2020). Further information on EIZS2 and PPS5 can be found in the Joint BioEnergy Institute Strain Registry (<https://public-registry.jbei.org>) using registry IDs JPUB\_013532 and JPUB\_013541, respectively. The biosynthetic pathways for the production of each of the isoprenoid fuel candidates are summarised in Supplementary Material.

The cellulolytic bacteria *Ruminococcus flavefaciens* strain 17, originally derived from bovine rumen, was obtained as a freeze-dried pellet

within a double glass ampoule from the German Collection of Microorganisms and Cell Cultures (DSMZ).

### 2.2. Preliminary high-throughput design of experiments guided screening

To assess the feasibility of succinic and acetic acids as carbon sources for the production of bisabolene by *R. toruloides*, a definitive screening design was created using JMP Pro 14 statistical software. The effect of six factors on bisabolene accumulation was considered (See Supplementary Material). Each of the 14 factor combinations included in the experimental design were tested in triplicate in 24-deep-well plates (Axygen, USA). As execution of the design necessitated the use of two 24-well plates across two separate runs, blocking was used to account for any experimental error that may arise as a result. Treatments evaluated in the first plate were assigned block 1 and those in the second were assigned block 2 (Table 1). Inocula preparation was achieved by transferring single colonies of *R. toruloides* strain GB2.485 to 5 mL of rich YPD medium (1% yeast extract; 2% peptone; and 2% glucose) and incubating at 30 °C and 200 rpm overnight. Aliquots of the inocula were diluted with appropriate volumes of each of the media combinations (Table 1) to give a 1.6 mL culture with the desired initial OD<sub>600</sub>. A 400-μL dodecane overlay was added for *in situ* extraction of the bisabolene product. The resulting cultures were incubated at 30 °C and 400 rpm for 96 h using an Eppendorf ThermoMixer® C thermal mixer. At the end of the cultivation, the contents of each well were centrifuged and the organic layer extracted for analysis of bisabolene production via gas chromatography-mass spectrometry (GC-MS). Biomass accumulation was also evaluated at the end of each cultivation using a Nanodrop 2000c spectrophotometer (ThermoFisher Scientific, UK).

### 2.3. Cultivation of *Ruminococcus flavefaciens*

#### 2.3.1. Cultivation media

*Ruminococcus albus* medium (Medium 436, DSMZ) with minor modifications was used for preliminary cultivations of *Ruminococcus flavefaciens*, containing the following per 100 mL: Peptone 0.5 g; Yeast extract 0.2 g; Glucose 0.3 g/L; Cellobiose 0.2 g; Mineral solution 1 (K<sub>2</sub>HPO<sub>4</sub> 0.6%) 7.5 mL; Mineral solution 2 (KH<sub>2</sub>PO<sub>4</sub> 0.6%; (NH<sub>4</sub>)<sub>2</sub>SO<sub>4</sub> 2%; NaCl 1.2%; MgSO<sub>4</sub> × 7 H<sub>2</sub>O 0.25%; CaCl<sub>2</sub> × 7 H<sub>2</sub>O 0.16%) 7.5 mL; Resazurin 0.1 mg; Na<sub>2</sub>CO<sub>3</sub> 0.4 g; Isobutyric acid 10 μ L; Isovaleric acid 10 μ L; 2-Methylbutyric acid 10 μ L; Cysteine-HCl × H<sub>2</sub>O 50 mg. Once growth was established on Medium 436 *R. flavefaciens* was adapted to growth on microcrystalline cellulose (Avicel PH-101, 50 μm particle size, Sigma-Aldrich, UK) as the main carbon source, firstly the glucose was removed and replaced with 1 g of cellulose (1% (w/v)). In subsequent cultivations the cellobiose was also excluded from the modified

**Table 1**  
Screening design for high-throughput microscale screening.

Factor combination	Block	Glucose (g/L)	Acetic acid (g/L)	Succinic acid (g/L)	Initial OD <sub>600</sub>	Yeast extract (g/L)	Peptone (g/L)
1	1	10	5	10	0.1	40	40
2	1	5	10	10	0.55	25	25
3	1	5	5	5	0.1	10	10
4	1	0	5	5	1	25	40
5	1	0	15	10	1	10	10
6	1	10	15	15	0.1	25	10
7	1	5	15	15	1	40	40
8	2	10	5	15	1	10	25
9	2	10	15	5	0.55	10	40
10	2	0	15	5	0.1	40	25
11	2	10	10	5	1	40	10
12	2	5	10	10	0.55	25	25
13	2	0	10	15	0.1	10	40
14	2	0	5	15	0.55	40	10
YPD control 1	1	20	0	0	1	10	20
YPD control 2	2	20	0	0	1	10	20
YP control	3	0	0	0	1	10	20

medium 436, yielding cellulose medium. For sequential bioprocess cultivations bacteria-yeast media was used, which contained all the elements of the cellulose medium except the concentrations of yeast extract and peptone were increased to 40 and 10 g/L to reflect the optimal concentrations elucidated for *R. toruloides*.

### 2.3.2. Cultivation conditions

Cultivations of *R. flavefaciens* were performed under strict anaerobic conditions in Hungate type anaerobic cultivation tubes (Siquip, UK), following a modified Hungate technique (Hungate, 1950). Briefly, the cultivation media was boiled under CO<sub>2</sub> to eliminate oxygen and distributed in 5–7 mL aliquots into Hungate tubes. Each tube was sealed with a butyl rubber stopper and the media was simultaneously heated and bubbled with CO<sub>2</sub> via a hypodermic needle until elimination of oxygen was confirmed visually due to decolourisation of the resazurin dye. The resulting sealed anoxic tubes were then sterilised via autoclaving prior to use. For cultivation, 0.5 mL of a previous *R. flavefaciens* culture was transferred to each Hungate tube containing anoxic sterile media using a 1 mL syringe and hypodermic needle. Prior to transfer, the syringe was flushed thoroughly with sterile CO<sub>2</sub> to prevent contamination with oxygen. Following inoculation, the tubes were incubated at 37 °C either with shaking (150–200 rpm) or without shaking as indicated.

### 2.3.3. Acid quantification

Fermentation of cellulose could be confirmed visually through generation of the characteristic yellow pigment associated with cellulase production in *R. flavefaciens*. Quantification of the major fermentation products, succinic acid and acetic acid, was achieved via enzymatic assay using Succinic Acid Assay Kit (K-SUCC, Megazyme) and Acetic Acid Assay kits (K-ACET, Megazyme), respectively. Prior to analysis, samples were clarified to prevent interference. Briefly, a 100 µL sample was diluted with 700 µL of deionised water before adding 50 µL Carrez solution I (K<sub>3</sub>Fe(CN)<sub>6</sub>, 3.6% (w/v)), 50 µL of Carrez solution II (ZnSO<sub>4</sub>·7H<sub>2</sub>O, 7.2% (w/v)) and 100 µL of 100 mM NaOH. Samples were mixed after each addition and the resulting mixture was centrifuged to precipitate contaminants. In both cases, the enzymatic assays were conducted in 96-well plates (Greiner Bio-One) according to the manufacturer's instructions and absorbance at 340 nm was measured using a CLARIOstar microplate reader (BMG-LABTECH).

## 2.4. Minibioreactor cultivations

### 2.4.1. Batch validation cultivation

Cultivations were conducted in MiniBio500 bioreactors (Applikon Biotechnology) with a working volume of 250 mL. Pre-inoculum cultures were prepared by transferring from a single GB2.485 colony to 5 mL of YPD and incubating at 30 °C and 200 rpm for 8 h. A 1 mL aliquot of the resulting culture was subsequently used to inoculate a secondary 10 mL YPD culture, which was incubated overnight. An aliquot of the resulting culture was diluted with the optimised acid medium to give a 200 mL culture with an initial OD<sub>600</sub> = 0.5.

To prevent excess foam production polypropylene glycol P2000 (Alfa Aesar) was added, and a Rushton turbine was placed at the medium-air interface. A 20% dodecane overlay was added for *in situ* extraction of the isoprenoid products. Temperature, DO, and pH were measured online. The adaptive my-control system (Applikon Biotechnology) was used to control process parameters in the MiniBio 500 bioreactors. A set point of 30% was implemented for DO and the culture temperature was maintained at 30 °C. The pH was maintained around six through the automatic addition of 3 M NaOH or 2 M H<sub>2</sub>SO<sub>4</sub>. Biomass was measured as optical density at 600 nm via offline manual sampling twice daily using a Nanodrop 2000c spectrophotometer (Thermo Fisher Scientific). Samples were also taken twice daily for bisabolene and organic acid quantification via GC-MS and enzymatic assay as per Section 2.4 and Section 2.2.3, respectively.

### 2.4.2. Feasibility of pH-controlled fed-batch

In the pH-controlled fed-batch cultivation the conditions were as described in Section 2.4.1, however, pH control was achieved using a 5X concentrated organic acid solution (Succinic acid 47.5 g/L, acetic acid 25 g/L) instead of 3 M NaOH and 2 M H<sub>2</sub>SO<sub>4</sub>. The pH was maintained above six through automatic addition of the 5X concentrated acid solution.

## 2.5. Metabolite identification and quantification

Production of bisabolene, *epi*-isozizaene and prespatane by the engineered *R. toruloides* strains was achieved via gas chromatography – mass spectrometry (GC-MS). Prior to analysis culture samples were centrifuged at 5000 rpm for 5 min to separate the aqueous and organic phases. Aliquots of the dodecane overlay containing the respective isoprenoid product were subsequently diluted with dodecane, microplate and initial miniBio 500 samples were diluted fourfold, this dilution was increased up to 20-fold for the miniBio 500 samples to ensure concentrations were within the range of the calibration standards (0 – 1000 mg/L). A 1-µL sample of the resulting mixture was then injected into a TRACE™ 1300 Gas Chromatograph (Thermo Fisher Scientific) coupled to an ISQ LT single quadrupole mass spectrometer (Thermo Fisher Scientific). Chromatographic separation was achieved using a Trace Gold TG-5MS (30 m × 0.25 mm × 0.25 µm) gas chromatography column using a previously described method (Kirby et al., 2021). To confirm production and quantify bisabolene an organic standard solution was used (1000 mg/L, SPEX Certiprep). Production of *epi*-isozizaene and prespatane was estimated relative to standard concentrations of bisabolene.

## 3. Results and discussion

### 3.1. Feasibility of bisabolene production from organic acids

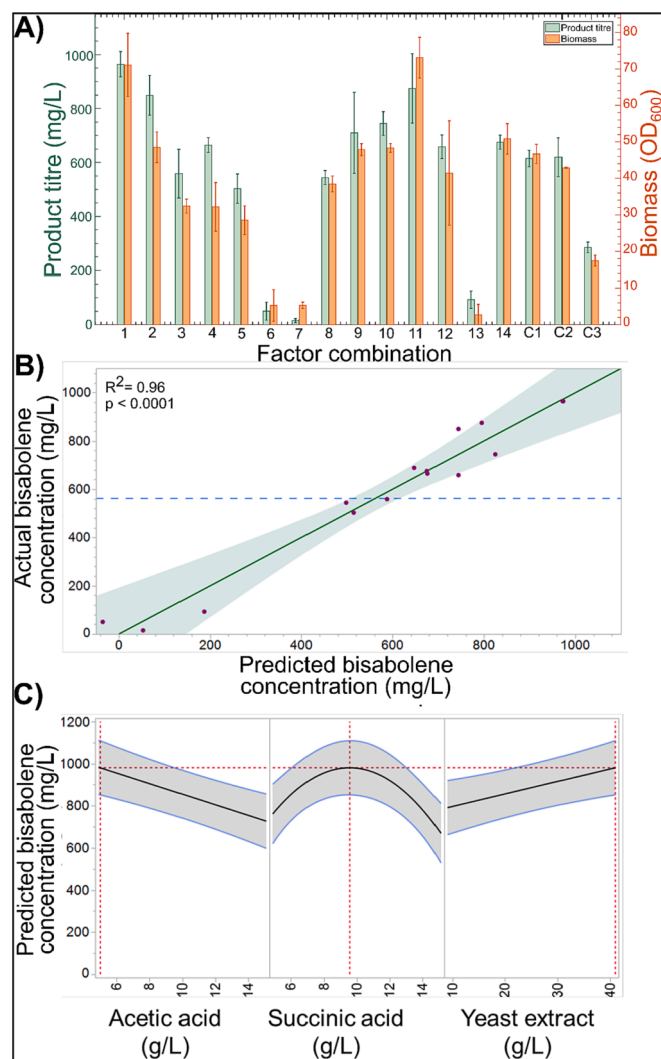
#### 3.1.1. Design of experiments guided preliminary screening

To investigate the feasibility of organic acids as a carbon source for bisabolene production by an engineered *R. toruloides* strain GB2.485, a design-of-experiments-guided high-throughput screening study was conducted. A definitive screening design (DSD) was selected, as this type of screening design was found to be extremely efficient and informative for the optimisation of isoprenoid production by *Saccharomyces cerevisiae* (Walls et al., 2022, Walls et al., 2021b) The initial concentrations of succinic and acetic acids were deemed critical factors in the study. Previous studies have demonstrated the suitability of acetic acid as a carbon source for lipid (Huang et al., 2016; Robles-Iglesias et al., 2021) and bisabolene production in the species (Magurudeniya et al., 2021; Sundstrom et al., 2018). However, previous studies found that at concentrations above ~ 16 g/L acetic acid had a significant inhibitory effect resulting in an extended lag phase and restricted growth (Robles-Iglesias et al., 2021). As tolerance to succinic acid and the suitability of these organic acids for heterologous isoprenoid biosynthesis have been less extensively characterised, these were a focus of the preliminary characterisation study. It was hypothesised that supplementation with a more preferred carbon source may be necessary to generate sufficient biomass for bisabolene synthesis. Glucose supplementation was therefore also included as a factor. Previous studies using *Saccharomyces cerevisiae* microbial cell factories engineered for production of isoprenoid precursors to the chemotherapy drug, Taxol, revealed that the initial biomass concentration had a significant effect on isoprenoid accumulation (Walls et al., 2021a). The initial OD<sub>600</sub> of the culture was therefore also included as a factor in the design. Finally, the initial concentrations of common complex media components, yeast extract and peptone were considered. The effect of peptone concentration was of particular interest as previous studies have found that carotenoid production is enhanced under nitrogen limited conditions (Zheng et al., 2021). To evaluate the effect of the six factors of interest a DSD was



created using JMP Pro 14 statistical software (Table 1). The results of the microscale screening study are summarised in Fig. 1.

Of the 14 medium combinations investigated, factor combinations 1, 2 and 11 gave rise to the highest bisabolene titres of  $964 \pm 47$ ,  $849 \pm 74$  and  $874 \pm 129$  mg/L, respectively. Interestingly, factor combinations 4, 10 and 14 resulted in comparable or slightly higher bisabolene titres to the control YPD cultivations despite using organic acids as the sole carbon source. As the yeast extract and peptone provided an additional source of carbon, a further control cultivation (C3) was performed in which no additional carbon source was added. Bisabolene production was detected with a final titre of  $285 \pm 19$ , despite the lack of additional carbon source. To determine which factors had a significant effect on bisabolene production, a statistical model was fitted using the optimised

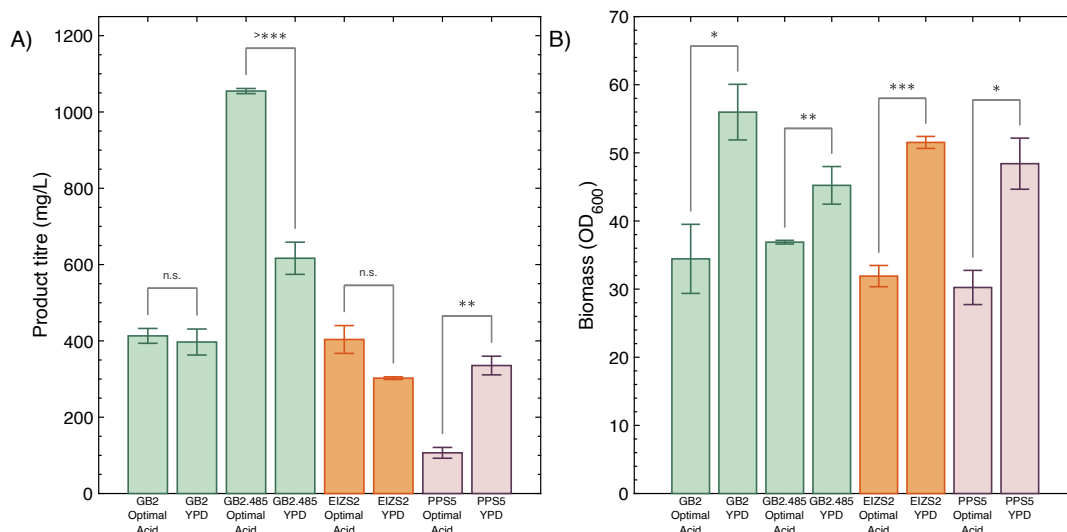


**Fig. 1.** High-throughput design-of-experiments-guided screening summary. A) Biomass and bisabolene accumulation evaluated at the end of 96 h GB2.485 cultivations performed using each of the 14 media combinations (See Supplementary Material). Control cultivations (C1 and C2) were performed in each of the two 24-deep-well plates using standard YPD media with an initial  $OD_{600} = 1$ , an additional control (C3) was performed using YP media alone. Values are mean  $\pm$  standard deviation for triplicate cultivations. B) Results of the statistical model fitted using JMP Pro 14 statistical software. Experimental bisabolene titres were plotted against those predicted by the statistical model and reliability of the model estimated. Blue dashed line corresponds to mean, solid green line corresponds to fit. C) Optimal setting for the significant main effects as predicted using the prediction profiler and statistical model. (For interpretation of the references to colour in this figure legend, the reader is referred to the web version of this article.)

Fit Definitive Screening Design algorithm (Jones and Nachtsheim, 2017) in JMP. Terms with p-values greater than 0.05 were deemed insignificant and therefore manually removed from the model. The final model identified three significant main effects, succinic acid ( $p = 2.0 \times 10^{-5}$ ), acetic acid ( $p = 3.9 \times 10^{-4}$ ) and yeast extract ( $p = 6.6 \times 10^{-3}$ ) concentrations. In addition, an interaction effect was detected between succinic acid and acetic acid concentrations ( $p = 2.2 \times 10^{-4}$ ). This was expected as previous studies have shown that above organic acid concentrations of around 15–20 g/L, growth is inhibited (Huang et al., 2016; Robles-Iglesias et al., 2021). The effect of succinic acid concentration was also found to be non-linear ( $p = 6.6 \times 10^{-4}$ ). The bisabolene titres predicted by the statistical model were plotted against the experimental data using JMP as summarised in Fig. 1B. The model achieved an  $R^2$  of 0.96 and most of the data points were contained within the 95% confidence interval, indicating a good predictive capability. To determine the optimal settings for each of the factors with a significant effect on the response, the prediction profiler function was used (Fig. 1A). According to the statistical model, initial succinic acid, acetic acid and yeast extract concentrations of 9.5, 5 and 40 g/L, respectively, would give rise to an optimal bisabolene titre of 964 mg/L. As significant bisabolene production was detected in the YP control cultivation, a further experiment was conducted to determine whether the organic acids contributed to improvements in titre or whether it was solely due to increased yeast extract. When strain GB2.485 was cultivated at microscale in the optimal media without any organic acids (yeast extract 40 g/L, peptone 10 g/L), the resulting bisabolene titre was  $314 \pm 25$ . This was comparable to the titre obtained in the YP control (C3, Fig. 1) and around threefold lower than the 964 mg/L predicted for the optimal media by the statistical model (Fig. 1B), confirming that bisabolene production is enhanced in cultivations supplemented with organic acids.

### 3.1.2. Validation of optimal conditions and additional strain testing

To validate the statistical model, the optimal medium conditions were tested at microscale (Fig. 2). The levels of those factors, which did not have a significant effect on bisabolene production were set to the lower limit to conserve resources. In addition to strain GB2.485, a further three strains were also grown in the optimised acid medium for comparison (Fig. 2). Strain GB2 is another *R. toruloides* strain previously engineered for bisabolene production (Kirby et al., 2021), however, unlike in GB2.485 no mevalonate pathway genes were overexpressed in GB2. Strains EIZS2 and PPS5 were engineered for *epi*-isozizaene and prespatane production, respectively (Geiselman et al., 2020). For all four strains investigated, biomass accumulation was significantly greater in the control YPD medium compared to the optimised acid medium (Fig. 2B). The final  $OD_{600}$  values were 38% lower for strains GB2, EIZS2 and PPS5 cultivated in the optimised medium compared to the control. Interestingly, for strain GB2.485, a lower reduction in biomass accumulation of 18% was observed (Fig. 2). Despite the reduced growth, bisabolene production was significantly greater for optimised media cultivations of strain GB2.485 ( $p = 2.11 \times 10^{-5}$ ). The final bisabolene titre was  $1055 \pm 7$  mg/L representing a 1.7-fold improvement compared to the YPD control. In addition, this was just 9% higher than the 964 mg/L predicted by the statistical model (Fig. 1C), demonstrating the ability of the derived model to predict performance with a relatively high degree of accuracy. There was no significant difference in bisabolene ( $p = 0.528$ ) and *epi*-isozizaene ( $p = 0.159$ ) production for strains GB2 and EIZS2, respectively (Fig. 2A). Prespatane production by strain PPS5, however, was around 68% lower in the optimised medium, with a final titre of just 107 mg/L. These results showed that although glucose supplementation was favourable for growth, in three out of four of the engineered *R. toruloides* strains investigated, isoprenoid production was comparable or enhanced when organic acids were used as the main carbon source.



**Fig. 2.** Validation of the statistical model and additional strain testing at microscale. Isoprenoid (A) and biomass (B) accumulation were evaluated at the end of 96 h cultivations performed using 24-deep-well plates. The isoprenoid products for each strain investigated were as follows: GB2 – bisabolene (green); GB2.485 – bisabolene (green); EISZ2 – *epi*-isozizaene (orange); PPS5–prespatane (purple). Each strain was cultivated in the optimal acid medium (Yeast extract 40 g/L; Peptone 10 g/L; Succinic acid 9.5 g/L; Acetic acid 5 g/L) and standard YPD (Yeast extract 10 g/L; Peptone 20 g/L; Glucose 20 g/L) as a control. Values are mean  $\pm$  standard deviation ( $n = 3$ ; n.s. if  $p$  greater than 0.05, \* -  $p < 0.05$ , \*\* -  $p < 0.01$ , \*\*\* -  $p < 0.001$ ; paired  $t$ -test). (For interpretation of the references to colour in this figure legend, the reader is referred to the web version of this article.)

### 3.2. Scale up using miniBio 500 bioreactors

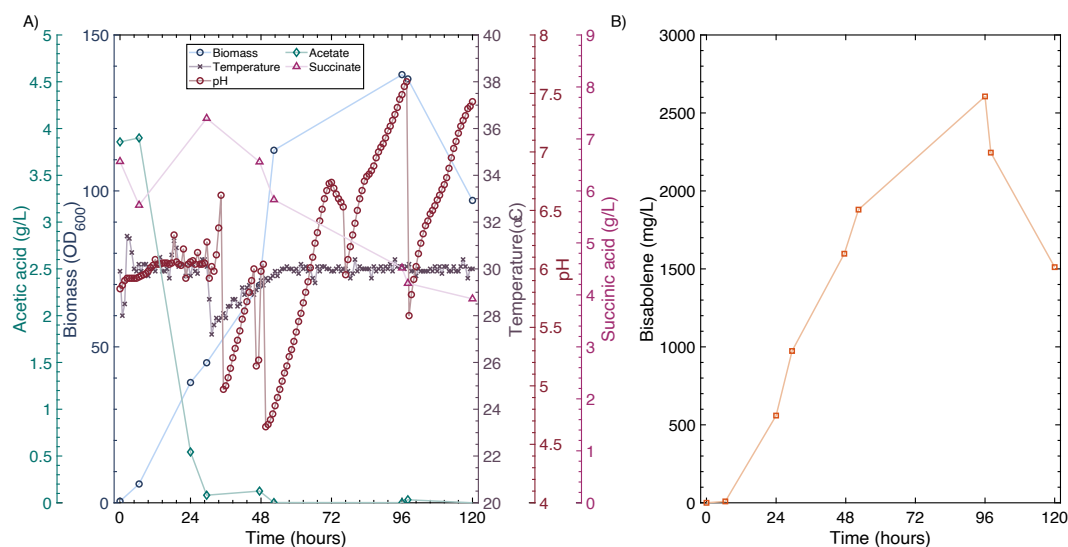
#### 3.2.1. Preliminary GB2.485 bioreactor cultivation

The optimal media combination elucidated during the microscale screening was tested at increased scale using a miniBio 500 bioreactor to investigate performance under more industrially relevant conditions as summarised in Fig. 3.

Despite the application of dissolved oxygen control, oxygen quickly became limiting during exponential growth in the mini-bioreactor. Between 12 and 60 h, the dissolved oxygen remained well below the set-point of 30% (See Supplementary Material). This suggested that a constant air supply throughout cultivations is likely to be beneficial to

minimise oxygen limitation. Control of pH was also found to be challenging in the system, with the culture pH varying between 4.5 and 7.5 during the cultivation despite the implementation of pH control with a set point of pH 6. This was partly due to the consumption of the acid substrate causing dramatic increases in culture pH. Back pressure due to the relatively high airflow inside the mini-bioreactor also contributed, through hindering performance of the peristaltic pumps employed for pH control.

Despite process control challenges in the preliminary mini-bioreactor cultivation, a maximum OD<sub>600</sub> of 137 was achieved at 96 h, representing a 3.7-fold improvement compared to the  $37 \pm 0.04$  achieved using the same media at microscale (Fig. 2B). Bisabolene



**Fig. 3.** Validation of optimised bioreactor at increased scale. GB2.485 was cultivated in the optimised acid medium (Yeast extract 40 g/L; Peptone 10 g/L; Succinic acid 9.5 g/L; Acetic acid 5 g/L) in a miniBio 500 bioreactor (Applikon Biotechnology). A) Temperature and pH were monitored and controlled online to set points of 30 °C and 6, respectively. Control of pH was achieved through the automatic addition of 2 M H<sub>2</sub>SO<sub>4</sub> or 3 M NaOH. Biomass, succinic acid and acetic acid concentrations were monitored via analysis of offline samples taken twice daily. B) Bisabolene production was monitored via GC–MS analysis of dodecane samples taken twice daily.

accumulation was also enhanced 2.5-fold to a maximum titre of 2606 mg/L (Fig. 3B).

### 3.2.2. GB2.485 bioreactor cultivation with pH-controlled acid feeding

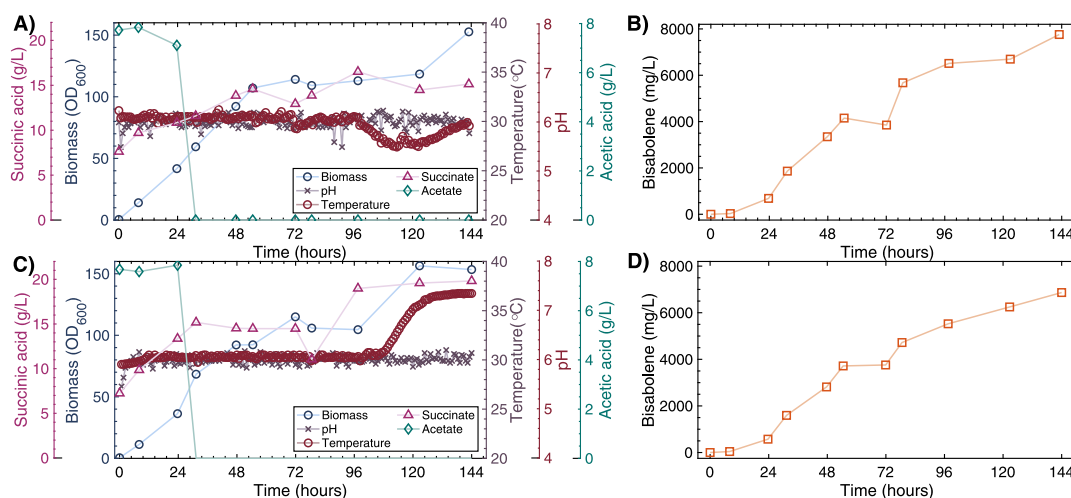
Substrate utilisation was readily detectable in the initial bioreactor cultivation, through an increase in culture pH. It was therefore hypothesised that pH controlled organic acid feeding could provide a dual benefit of stabilising conditions inside the reactor and increasing productivity through the provision of additional carbon source, without allowing acids to accumulate to inhibitory levels. To investigate this, a bioreactor cultivation was performed in which a 100 mL, 5X concentrated acid feed (succinic acid, 47 g/L; acetic acid, 25 g/L) was employed for single sided pH control. The results of this experiment are summarised in Fig. 4A & B. As increasing the initial yeast extract concentration was found to improve bisabolene production at microscale (Fig. 1), it was hypothesised that supplementing the organic acid feed with an additional supply of nutrients may be beneficial for bisabolene production. An additional fed-batch cultivation was therefore performed in which the feed contained all components of the media at 5X concentration (succinic acid, 47 g/L; acetic acid, 25 g/L; yeast extract, 200 g/L; peptone, 50 g/L). The results of this experiment are summarised in Fig. 4C & D.

Prior to the start of the cultivations, the proportional-integral-derivative (PID) settings of the adaptive pH controller of the myControl system (Applikon Biotechnology) were reset, to ensure a slower initial pump rate and reduce the risk of overcorrection. The condenser set up was also modified to prevent pooling of water and thereby ensure unobstructed gas flow through the condenser outlet. These alterations improved pH control in the reactors dramatically, with the pH remaining close to the set-point of 6 for the first 96 h (Fig. 4A & C). In the concentrated acid fed reactor, exponential growth of *R. toruloides* strain GB2.485, was observed between 0 and 54 h with an  $OD_{600}$  of 107 reached after 54 h of cultivation. The concentration of acetic acid in the cultivation medium rapidly dropped close to 0 g/L during exponential growth and did not increase during substrate feeding. The concentration of succinic acid, on the other hand, increased up to a maximum of 16.5 g/L after 98 h of cultivation. This indicates that, although succinic acid concentration was deemed to have a significant effect on bisabolene production by the statistical model (Fig. 1), it was largely unconsumed at bioreactor scale. The differences in operational mode between scales may have contributed to the discrepancies observed as recent studies

have shown that the ability of microscale batch screening experiments to predict performance of larger scale fed-batch processes is limited (Teworte et al., 2022). Future optimisation studies should therefore focus on the incorporation of fed-batch microscale tools to allow closer mimicry of large scale bioreactor conditions from the outset. A plateau in growth was observed between 54 and 123 h, followed by an increase to an  $OD_{600} = 153$  between 123 and 144 h (Fig. 4A). This increase followed a dip in pH at 120 h to pH 5.5, as no additional feed was supplied during this period due to the low pH, and no consumption of succinic acid was observed, this additional growth was likely due to consumption of additional carbon sources present within the complex medium.

Bisabolene accumulation was observed throughout the 144 h cultivation, with a maximum titre of 7758 mg/L observed at 144 h (Fig. 4B). This represents a threefold improvement in titre compared to the batch cultivation with pH control via  $H_2SO_4$  and NaOH (Fig. 3B). This titre was also around threefold higher than the previously reported maximum microbial bisabolene titre of 2600 mg/L, which was achieved using a hydrolysate containing ~ 115 g/L of sugars (Kirby et al., 2021). Whilst succinic acid consumption was limited, acetic acid proved to be an excellent low-cost carbon source for bisabolene production by *R. toruloides* strain GB2.485.

Supplementation of the feed with additional yeast extract and peptone did not further improve growth, with a comparable  $OD_{600}$  of 115 observed after 72 h of cultivation (Fig. 4C). As for the concentrated acid fed reactor (Fig. 4A), a plateau in growth was observed between 72 and 108 h. At 108 h, the concentrated media solution was depleted and the pH rose from the set point of 6 to 7.4. This increase in pH was coupled with an increase in  $OD_{600}$  to 156 (Fig. 4C), as in the concentrated acid fed cultivation (Fig. 4A), succinic acid was not consumed and accumulated in the cultivation medium, this additional growth was therefore likely the result of consumption of additional carbon sources present. Bisabolene production was also comparable in the concentrated media (Fig. 4D) and concentrated acid (Fig. 4B) fed bioreactors, with final bisabolene titres of 6865 and 7758 mg/L, respectively. As supplementation of the feed with additional yeast extract and peptone did not improve growth and resulted in a slight decrease in bisabolene accumulation, it was deemed inappropriate.



**Fig. 4.** Optimised medium cultivation with pH controlled feeding. Strain GB2.485 was cultivated in the optimised acid medium (Yeast extract 40 g/L; Peptone 10 g/L; Succinic acid 9.5 g/L; Acetic acid 5 g/L) in miniBio 500 bioreactors (Applikon Biotechnology). Single-sided pH control was achieved through automatic addition of either 5X concentrated acid (succinic acid, 47 g/L; acetic acid, 25 g/L; A&B) or 5X concentrated media (succinic acid, 47 g/L; acetic acid, 25 g/L; yeast extract 200 g/L; peptone 50 g/L; C&D), whenever the pH rose above the setpoint of 6. Biomass, succinic acid and acetic acid concentrations were monitored via analysis of offline samples taken twice daily for the concentrated acid (A) and media (C) fed reactors, respectively. Bisabolene production in the concentrated acid (B) and media (D) fed reactors was monitored via GC-MS analysis of dodecane samples taken twice daily.



### 3.3. Feasibility of bioconversion of cellulose to organic acids by *Ruminococcus flavefaciens*

#### 3.3.1. Preliminary ruminococcosus flavefaciens cultivations

Preliminary cultivations of *Ruminococcus flavefaciens* were performed using medium 436 (DSMZ, Germany) under strictly anaerobic conditions. The species was gradually adapted to growth on cellulose as the sole carbon source by replacing glucose with 1% w/v cellulose. Once metabolism of cellulose could be confirmed through production of a yellow pigment associated with cellulase production (Kopečný and Hodrová, 1997; Sijpesteijn, 1951), the cellobiose was also removed from the medium, yielding cellulose medium. Acid accumulation was evaluated in preliminary cellulose medium cultivations (See Supplementary Material). As the optimal cultivation time was not known, the effect of incubation period was investigated, through measuring total acid concentration after five and seven days. The resulting titres were highly comparable at 3.47 and 3.57 g/L, respectively (See Supplementary Material). Control measurements of the medium without any bacteria were also performed to ensure the acids were produced by the bacterium and not already present in the medium. As only a small amount (~0.1 g/L) of acetic acid and no succinic acid were detected in the control, it can be assumed that the organic acids detected in the cultures were the result of cellulose fermentation by *R. flavefaciens*. Although the total acid concentration was around fourfold lower than the optimal concentration for bisabolene production determined during high-throughput micro-scale screening (Fig. 1), the anaerobic bacteria were found to reliably produce gram per litre quantities of both of the acids of interest from cellulose.

Although pure microcrystalline cellulose was employed in this proof-of-concept study, a real application of this technology would envisage the use of lignocellulosic waste materials to minimise feedstock costs and improve sustainability.

### 3.4. Proof of concept: Sequential bioreactor approach for the bioconversion of cellulose to bisabolene

#### 3.4.1. Testing a suitable medium for sequential cultivations

As the concentrations of yeast extract and peptone in the bacterial cellulose medium were 20 and twofold lower, respectively, than those of

the optimised acid medium, it was hypothesised that the nutrient content of bacterial medium would be insufficient to support growth of the yeast, especially after fermentation. A bacteria-yeast medium was therefore developed in which the initial concentrations of yeast extract and peptone were increased to 40 and 10 g/L, respectively. *R. flavefaciens* fermentation performance in this bacteria-yeast medium was characterised as summarised in Fig. 5.

When *R. flavefaciens* was cultivated in the yeast-bacteria medium, succinic acid and acetic acid production was observed during the first five days of cultivation, with maximum titres of  $3.51 \pm 0.24$  and  $1.63 \pm 0.06$  g/L observed after five days, respectively (Fig. 5). The succinic acid titre plateaued between five and seven days, and a slight decrease in acetic acid titre was observed. This further confirmed that an incubation time of five days is likely to be optimal for the cellulose fermentation step.

#### 3.4.2. Testing the sequential bioprocess approach

Finally, the sequential bioprocess was tested through first cultivating *R. flavefaciens* in the bacteria-yeast medium for five days. At the end of the five-day fermentations, the resulting cultures were centrifuged and the supernatant used for subsequent microscale cultivations of *R. toruloides* strain GB2.485.

Fermentation of cellulose by *R. flavefaciens* yielded a total organic acid concentration 4.2 g/L, consisting of 2.8 g/L of succinic acid and 1.4 g/L of acetic acid, at the end of the five day cultivation. The resulting bacterial culture was centrifuged and the organic acid containing supernatant recovered. Aerobic cultivation of *R. toruloides* strain GB2.485 in this supernatant for four days resulted in a bisabolene titres of  $318 \pm 22$  mg/L. Although the maximum titre obtained for the fermented bacteria-yeast medium was 3.3-fold lower than the 1055 mg/L achieved using the optimised acid medium at microscale (Fig. 2), the product yield coefficients ( $Y_{\frac{\text{bisabolene}}{\text{totalorganicacid}}}$ ) were highly comparable at 0.076 and 0.073 g/g, respectively. However, it is worth noting that this titre is highly comparable to that of the YP control (C3, Fig. 1A) without any organic acids. Future studies using synthetic media will further clarify the potential of this sequential approach using organic acids as sole carbon source. Nevertheless, this early data suggests that through optimisation of the first step to improve the conversion of cellulose and enhance organic acid yields, particularly acetic acid, gram per litre quantities of

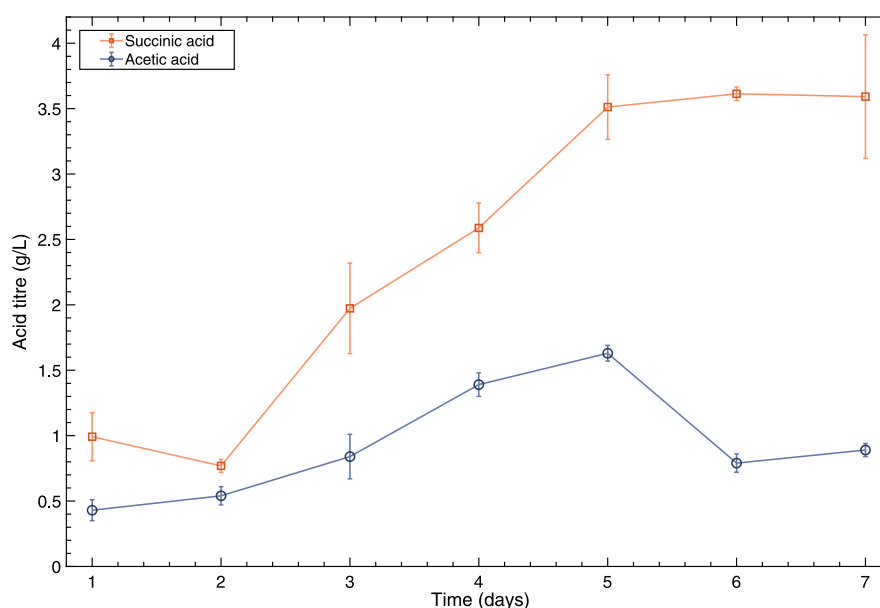


Fig. 5. Further characterisation of *R. flavefaciens* fermentation performance. *R. flavefaciens* was cultivated under strict anaerobic conditions in bacteria-yeast medium. Succinic (◻) and acetic (◊) acid production kinetics were monitored via offline samples taken daily from cultures incubated at 200 rpm and 37 °C for seven days values are mean ± standard deviation, n = 5.

bisabolene could be generated from cellulose without the need for commercial enzymes to support the growth of our engineered *R. toruloides* strains.

Although cellulose is the most abundant natural polymer on earth, it is cross-linked with the two additional major components of plant cells, hemicelluloses and lignin, rendering it highly recalcitrant to microbial degradation. As a result, various energy intensive and costly pre-treatment processes are often required (Fonoll et al., 2021; Navarrete et al., 2020), which has hindered the capitalisation of cellulose as a feedstock for biofuel production to date. The immense microbial species diversity of the rumen maximises lignocellulose degradation as many species have evolved to degrade different components of the highly complex feed (Henderson et al., 2015; Hungate, 1966). Whilst this study demonstrated effective fermentation of the cellulosic fraction, to improve economic feasibility, future work should focus on the establishment of robust synthetic consortia to allow use of widely available lignocellulosic feedstocks, with minimal pre-treatment. In addition, in the natural rumen environment, methanogens act as an important hydrogen sink, sequestering hydrogen and CO<sub>2</sub>, yielding methane (Ungerfeld, 2015). This is favourable for overall fermentation performance as reduced co-factors are re-oxidised during methanogenesis allowing fermentation to continue (Ungerfeld, 2015). Previous studies have found that co-cultivation of *Ruminococci* with acetogens, as alternative hydrogen sinks, can improve fermentation performance and shift flux toward acetic acid production (Miller and Wolin, 1995; Williams et al., 1994). Co-cultivation of the cellulolytic rumen bacterium, *Ruminococcus albus*, with an acetogenic bacterium, for example, improved acetic acid accumulation threefold compared to monoculture (Miller and Wolin, 1995). This strategy could potentially improve bisabolene titres in the sequential bioprocess of this study, as bisabolene production was found to occur predominantly during acetic acid metabolism.

#### 4. Conclusion

This study demonstrated a proof-of-concept sequential bioprocess for the bioconversion of cellulose into bisabolene. Preliminary microscale screening revealed organic acids as a promising carbon source for bisabolene production by *R. toruloides*, with a maximum titre of 1055 ± 7 mg/L. Implementation of pH controlled organic acid feeding at bioreactor scale improved titres 7.4-fold to 7758 mg/L, the highest reported microbial titre. *Ruminococcus flavefaciens*, successfully fermented cellulose, yielding 4.2 g/L of organic acids, which were subsequently converted into 318 ± 22 mg/L of bisabolene by *R. toruloides*. Future work should focus on improving organic acid titres and using real lignocellulosic feedstocks.

#### Declaration of Competing Interest

The authors declare that they have no known competing financial interests or personal relationships that could have appeared to influence the work reported in this paper.

#### Data availability

Data will be made available on request.

#### Acknowledgements

The authors would like to thank Mr Stuart Martin and Mr Mark Lauchlan at The School of Engineering, University of Edinburgh, UK for their kind assistance and technical support with GC-MS analysis. This work was supported by the Engineering and Physical Sciences Research Council (Grant number EP/R513209/1) and The British Council (Grant Number: 527429894). The *R. toruloides* strains used in this work were developed by the Joint BioEnergy Institute through the U.S. Department of Energy, Office of Science, Office of Biological and Environmental

Research, through contract DE-AC02-05CH11231 between Lawrence Berkeley National Laboratory and the U.S. Department of Energy.

#### Appendix A. Supplementary data

Supplementary data to this article can be found online at <https://doi.org/10.1016/j.biortech.2022.128216>.

#### References

- Ali, S.S., Nugent, B., Mullins, E., Doohan, F.M., 2016. Fungal-mediated consolidated bioprocessing: the potential of *Fusarium oxysporum* for the lignocellulosic ethanol industry. *AMB Express* 6, 13. <https://doi.org/10.1186/s13568-016-0185-0>.
- Boodhoo, K., Harvey, A., 2013. *Process Intensification: An Overview of Principles and Practice*. Process Intensif. Green Chem. Wiley Online Books <https://doi.org/https://doi.org/10.1002/9781118498521.ch1>.
- Carere, C., Sparling, R., Cicek, N., Levin, D., 2008. Third generation biofuels via direct cellulose fermentation. *Int. J. Mol. Sci.* 9 (7), 1342–1360.
- Fonoll, X., Shrestha, S., Khanal, S.K., Dosta, J., Mata-Alvarez, J., Raskin, L., 2021. Understanding the anaerobic digestibility of lignocellulosic substrates using rumen content as a cosubstrate and an inoculum. *ACS ES&T Eng.* 1, 424–435. <https://doi.org/10.1021/acsestengg.0c00164>.
- Geiselman, G.M., Kirby, J., Landera, A., Otoupal, P., Papa, G., Barcelos, C., Sundstrom, E. R., Das, L., Magurudeniya, H.D., Wehres, M., Rodriguez, A., Simmons, B.A., Magnuson, J.K., Mukhopadhyay, A., Lee, T.S., George, A., Gladden, J.M., 2020. Conversion of poplar biomass into high-energy density tricyclic sesquiterpene jet fuel blendstocks. *Microb. Cell Fact.* 19, 208. <https://doi.org/10.1186/s12934-020-01456-4>.
- Henderson, G., Cox, F., Ganesh, S., Jonker, A., Young, W., Abecia, L., Collaborators, G.R. C., et al., 2015. Rumen microbial community composition varies with diet and host, but a core microbiome is found across a wide geographical range. *Sci. Rep.* 5, 14567. <https://doi.org/10.1038/srep14567>.
- Huang, X.-F., Liu, J.-N., Lu, L.-J., Peng, K.-M., Yang, G.-X., Liu, J.-N., 2016. Culture strategies for lipid production using acetic acid as sole carbon source by *Rhodospiridium toruloides*. *Bioresour. Technol.* 206, 141–149. <https://doi.org/10.1016/j.biortech.2016.01.073>.
- Hungate, R.E., 1966. CHAPTER II - The Rumen bacteria. In: R.E.B.T.-T.R. and its M.R.E. B.T.-T.R. and its M. (Ed.), Hungate. Academic Press, pp. 8–90 <https://doi.org/https://doi.org/10.1016/B978-1-4832-3308-6.50005-X>.
- Hungate, R.E., 1950. The anaerobic mesophilic cellulolytic bacteria. *Bacteriol. Rev.* 14, 1–49. <https://doi.org/10.1128/br.14.1.1-49.1950>.
- Jones, B., Nachtsheim, C.J., 2017. Effective design-based model selection for definitive screening designs. *Technometrics* 59, 319–329. <https://doi.org/10.1080/00401706.2016.1234979>.
- Julliard, V., de Vaux, A., Millet, L., Fonty, G., 1999. Identification of *Ruminococcus flavefaciens* as the predominant cellulolytic bacterial species of the equine cecum. *Appl. Environ. Microbiol.* 65, 3738–3741. <https://doi.org/10.1128/AEM.65.8.3738-3741.1999>.
- Kirby, J., Geiselman, G.M., Yaegashi, J., Kim, J., Zhuang, X., Tran-Gymfi, M.B., Prah, J.-P., Sundstrom, E.R., Gao, Y., Munoz, N.M., Burnum-Johnson, K.E., Benites, V.T., Baidoo, E.E.K., Fuhrmann, A., Seibel, K., Webb-Robertson, B.-J.-M., Zucker, J., Nicora, C.D., Tanjore, D., Magnuson, J.K., Skerker, J.M., Gladden, J.M., 2021. Further Engineering of *R. Toruloides* for the Production of Terpenes From Lignocellulosic Biomass. *Biotechnol. Biofuels* 14. <https://doi.org/10.1186/s13068-021-01950-w>.
- Kokam, 2019. KOKAM Li-ion/Polymer Cell [WWW Document]. accessed 9.6.19. [http://k-okam.com/data/2019\\_Kokam\\_Cell\\_ver\\_4.2.pdf](http://k-okam.com/data/2019_Kokam_Cell_ver_4.2.pdf).
- Kopečný, J., Hodrová, B., 1997. The effect of yellow affinity substance on cellulases of *Ruminococcus flavefaciens*. *Lett. Appl. Microbiol.* 25, 191–196. <https://doi.org/10.1046/j.1472-765X.1997.00202.x>.
- Latham, M.J., Wolin, M.J., 1977. Fermentation of cellulose by *Ruminococcus flavefaciens* in the presence and absence of *Methanobacterium ruminantium*. *Appl. Environ. Microbiol.* 34, 297–301. <https://doi.org/10.1128/aem.34.3.297-301.1977>.
- Li, H., Wang, Y., Ma, X., Guo, M., Li, Y., Li, G., Cui, P., Zhou, S., Yu, M., 2022. Synthesis of CaO/ZrO<sub>2</sub> based catalyst by using UiO-66(Zr) and calcium acetate for biodiesel production. *Renew. Energy* 185, 970–977. <https://doi.org/10.1016/j.renene.2021.12.096>.
- Liu, J., Yuan, M., Liu, J.N., Huang, X.F., 2017. Bioconversion of mixed volatile fatty acids into microbial lipids by *Cryptococcus curvatus* ATCC 20509. *Bioresour. Technol.* 241, 645–651. <https://doi.org/10.1016/j.biortech.2017.05.085>.
- Ma, X., Liu, F., Helian, Y., Li, C., Wu, Z., Li, H., Chu, H., Wang, Y., Wang, Y., Lu, W., Guo, M., Yu, M., Zhou, S., 2021. Current application of MOFs based heterogeneous catalysts in catalyzing transesterification/esterification for biodiesel production: A review. *Energy Convers. Manag.* 229, 113760 <https://doi.org/10.1016/j.enconman.2020.113760>.
- Magurudeniya, H.D., Baral, N.R., Rodriguez, A., Scown, C.D., Dahlberg, J., Putnam, D., George, A., Simmons, B.A., Gladden, J.M., 2021. Use of ensiled biomass sorghum increases ionic liquid pretreatment efficiency and reduces biofuel production cost and carbon footprint. *Green Chem.* 23, 3127–3140. <https://doi.org/10.1039/D0GC03260C>.
- Miller, T.L., Wolin, M.J., 1995. Bioconversion of cellulose to acetate with pure cultures of *Ruminococcus albus* and a hydrogen-using acetogen. *Appl. Environ. Microbiol.* 61, 3832–3835. <https://doi.org/10.1128/AEM.61.11.3832-3835.1995>.

- Navarrete, C., Jacobsen, I.H., Martínez, J.L., Procentese, A., 2020. Cell Factories for Industrial Production Processes: Current Issues and Emerging Solutions. *Processes* 8. <https://doi.org/https://doi.org/10.3390/pr8070768>.
- Olofsson, K., Bertilsson, M., Lidén, G., 2008. A short review on SSF – an interesting process option for ethanol production from lignocellulosic feedstocks. *Biotechnol. Biofuels* 1, 7. <https://doi.org/10.1186/1754-6834-1-7>.
- Ozbayram, E.G., Akyol, Ç., Ince, B., Karakoç, C., Ince, O., 2018. Rumen bacteria at work: bioaugmentation strategies to enhance biogas production from cow manure. *J. Appl. Microbiol.* 124, 491–502. <https://doi.org/10.1111/jam.13668>.
- Peralta-Yahya, P.P., Ouellet, M., Chan, R., Mukhopadhyay, A., Keasling, J.D., Lee, T.S., 2011. Identification and microbial production of a terpene-based advanced biofuel. *Nat. Commun.* 2, 483.
- Robles-Iglesias, R., Veiga, M.C., Kennes, C., 2021. Carbon dioxide bioconversion into single cell oils (lipids) in two reactors inoculated with *Acetobacterium woodii* and *Rhodospiridium toruloides*. *J. CO2 Util.* 52, 101668 <https://doi.org/10.1016/j.jcou.2021.101668>.
- Seshadri, R., Leahy, S.C., Attwood, G.T., Teh, K.H., Lambie, S.C., Cookson, A.L., Eloe-Fadrosch, E.A., Pavlopoulos, G.A., Hadjithomas, M., Varghese, N.J., Paez-Espino, D., Palevich, N., Janssen, P.H., Ronimus, R.S., Noel, S., Soni, P., Reilly, K., Atherly, T., Ziemer, C., Wright, A.-D., Ishaq, S., Cotta, M., Thompson, S., Crosley, K., McKain, N., Wallace, R.J., Flint, H.J., Martin, J.C., Forster, R.J., Gruninger, R.J., McAllister, T., Gilbert, R., Ouwerkerk, D., Klieve, A., Jassim, R.A., Denman, S., McSweeney, C., Rosewarne, C., Koike, S., Kobayashi, Y., Mitsumori, M., Shinkai, T., Cravero, S., Cucchi, M.C., Perry, R., Henderson, G., Creevey, C.J., Terrapon, N., Lapebie, P., Drula, E., Lombard, V., Rubin, E., Kyrpides, N.C., Henrissat, B., Woyke, T., Ivanova, N.N., Kelly, W.J., collaborators, H. project, 2018. Cultivation and sequencing of rumen microbiome members from the Hungate1000 Collection. *Nat. Biotechnol.* 36, 359–367. <https://doi.org/10.1038/nbt.4110>.
- Sijpesteijn, A.K., 1951. On *Ruminococcus flavefaciens*, a Cellulose-decomposing: Bacterium from the Rumen of Sheep and Cattle. *J. Gen. Microbiol.* 5, 869–879. <https://doi.org/10.1099/00221287-5-869>.
- Sundstrom, E., Yaegashi, J., Yan, J., Masson, F., Papa, G., Rodriguez, A., Mirsiaghi, M., Liang, L., He, Q., Tanjore, D., Pray, T.R., Singh, S., Simmons, B., Sun, N., Magnuson, J., Gladden, J., 2018. Demonstrating a separation-free process coupling ionic liquid pretreatment, saccharification, and fermentation with *Rhodospiridium toruloides* to produce advanced biofuels. *Green Chem.* 20, 2870–2879. <https://doi.org/10.1039/C8GC00518D>.
- Teworte, S., Malcı, K., Walls, L.E., Halim, M., Rios-Solis, L., 2022. Recent advances in fed-batch microscale bioreactor design. *Biotechnol. Adv.* 55, 107888 <https://doi.org/10.1016/j.biotechadv.2021.107888>.
- The European Parliament and of the Council of the European Union, 2018. Directive (EU) 2018/2001 of the European Parliament and of the Council of 11 December 2018 on the promotion of the use of energy from renewable sources (recast). *Off. J. Eur. Union* 328, 82–209.
- The White House, 2021. FACT SHEET: Biden Administration Advances the Future of Sustainable Fuels in American Aviation [WWW Document]. URL <https://www.whitehouse.gov/briefing-room/statements-releases/2021/09/09/fact-sheet-biden-administration-advances-the-future-of-sustainable-fuels-in-american-aviation/>.
- The Royal Academy of Engineering, 2017. Sustainability of liquid biofuels. <https://raeng.org.uk/media/pk1k5mie/raeng-biofuels-report-1-1.pdf>. (Accessed 12 Nov 2022).
- Torres-Sebastián, M.J., Colli-Mull, J.G., Escobedo-Sánchez, L., Martínez-Fong, D., Rios-Solis, L., Gutiérrez-Castillo, M.E., López-Jiménez, G., Moreno-Rivera, M.L., Tovar-Gálvez, L.R., Espadas-Álvarez, A.J., 2021. Methane, a renewable biofuel: from organic waste to bioenergy. *Biofuels* 13 (7), 907–917.
- Ungerfeld, E.M., 2015. Shifts in metabolic hydrogen sinks in the methanogenesis-inhibited ruminal fermentation: a meta-analysis. *Front. Microbiol.*
- Walls, L.E., Malcı, K., Nowrouzi, B., Li, R.A., d’Espaux, L., Wong, J., Dennis, J.A., Semiao, A.J.C., Wallace, S., Martinez, J.L., Keasling, J.D., Rios-Solis, L., 2021a. Optimizing the biosynthesis of oxygenated and acetylated Taxol precursors in *Saccharomyces cerevisiae* using advanced bioprocessing strategies. *Biotechnol. Bioeng.* 118, 279–293. <https://doi.org/10.1002/bit.27569>.
- Walls, L.E., Martinez, J.L., del Rio Chanona, E.A., Solis, L.R., 2021b. Definitive screening for accelerated Taxol biosynthetic pathway optimization and scale up in *Saccharomyces cerevisiae* cell factories. *Biotechnol. J.* 2100414. <https://doi.org/10.1002/biot.202100414>.
- Walls, L.E., Martinez, J.L., Rios-Solis, L., 2022. Enhancing *Saccharomyces cerevisiae* Taxane biosynthesis and overcoming nutritional stress-induced pseudohyphal growth. *Microorg* 10 (1), 163.
- Walls, L.E., Rios-Solis, L., 2020. Sustainable production of microbial isoprenoid derived advanced biojet fuels using different generation feedstocks: A review. *Front. Bioeng. Biotechnol.*
- Weimer, P.J., 1992. Cellulose degradation by ruminal microorganisms. *Crit. Rev. Biotechnol.* 12, 189–223. <https://doi.org/10.3109/07388559209069192>.
- Weimer, P.J., Russell, J.B., Muck, R.E., 2009. Lessons from the cow: What the ruminant animal can teach us about consolidated bioprocessing of cellulosic biomass. *Bioresour. Technol.* 100, 5323–5331. <https://doi.org/10.1016/j.biortech.2009.04.075>.
- Williams, A.G., Withers, S.E., Joblin, K.N., 1994. The effect of cocultivation with hydrogen-consuming bacteria on xylanolysis by *Ruminococcus flavefaciens*. *Curr. Microbiol.* 29, 133–138. <https://doi.org/10.1007/BF01570753>.
- Yaegashi, J., Kirby, J., Ito, M., Sun, J., Dutta, T., Mirsiaghi, M., Sundstrom, E.R., Rodriguez, A., Baidoo, E., Tanjore, D., Pray, T., Sale, K., Singh, S., Keasling, J.D., Simmons, B.A., Singer, S.W., Magnuson, J.K., Arkin, A.P., Skerker, J.M., Gladden, J.M., 2017. *Rhodospiridium toruloides*: a new platform organism for conversion of lignocellulose into terpene biofuels and bioproducts. *Biotechnol. Biofuels* 10, 241. <https://doi.org/10.1186/s13068-017-0927-5>.
- Zheng, X., Hu, R., Chen, D., Chen, J., He, W., Huang, L., Lin, C., Chen, H., Chen, Y., Zhu, J., Qi, F., Xue, T., 2021. Lipid and carotenoid production by the *Rhodospiridium toruloides* mutant in cane molasses. *Bioresour. Technol.* 326, 124816 <https://doi.org/10.1016/j.biortech.2021.124816>.
- Zhuang, X., Kilian, O., Monroe, E., Ito, M., Tran-Gymfi, M.B., Liu, F., Davis, R.W., Mirsiaghi, M., Sundstrom, E., Pray, T., Skerker, J.M., George, A., Gladden, J.M., 2019. Monoterpene production by the carotenogenic yeast *Rhodospiridium toruloides*. *Microb. Cell Fact.* 18, 54. <https://doi.org/10.1186/s12934-019-1099-8>.
- Zuroff, T.R., Xiques, S.B., Curtis, W.R., 2013. Consortia-mediated bioprocessing of cellulose to ethanol with a symbiotic *Clostridium* phytofermentans/yeast co-culture. *Biotechnol. Biofuels* 6, 59. <https://doi.org/10.1186/1754-6834-6-59>.