

UC Berkeley

UC Berkeley Previously Published Works

Title

Acetylene-Fueled Trichloroethene Reductive Dechlorination in a Groundwater Enrichment Culture

Permalink

<https://escholarship.org/uc/item/70k2q240>

Journal

mBio, 12(1)

ISSN

2161-2129

Authors

Gushgari-Doyle, Sara
Oremland, Ronald S
Keren, Ray
et al.

Publication Date

2021-02-23




DOI

10.1128/mbio.02724-20

Peer reviewed



Acetylene-Fueled Trichloroethene Reductive Dechlorination in a Groundwater Enrichment Culture

 Sara Gushgari-Doyle,^a Ronald S. Oremland,^b  Ray Keren,^{a,c} Shaun M. Baesman,^b  Denise M. Akob,^d Jillian F. Banfield,^c Lisa Alvarez-Cohen^{a,e}

^aDepartment of Civil and Environmental Engineering, University of California, Berkeley, California, USA

^bU. S. Geological Survey, Menlo Park, California, USA

^cDepartment of Earth and Planetary Sciences, University of California, Berkeley, California, USA

^dU. S. Geological Survey, Reston, Virginia, USA

^eEarth and Environmental Sciences Division, Lawrence Berkeley National Laboratory, Berkeley, California, USA

ABSTRACT In aquifers, acetylene (C₂H₂) is a product of abiotic degradation of trichloroethene (TCE) catalyzed by *in situ* minerals. C₂H₂ can, in turn, inhibit multiple microbial processes including TCE dechlorination and metabolisms that commonly support dechlorination, in addition to supporting the growth of acetylenotrophic microorganisms. Previously, C₂H₂ was shown to support TCE reductive dechlorination in synthetic, laboratory-constructed cocultures containing the acetylenotroph *Pelobacter* sp. strain SFB93 and *Dehalococcoides mccartyi* strain 195 or strain BAV1. In this study, we demonstrate TCE and perchloroethene (PCE) reductive dechlorination by a microbial community enriched from contaminated groundwater and amended with C₂H₂ as the sole electron donor and organic carbon source. The metagenome of the stable, enriched community was analyzed to elucidate putative community functions. A novel anaerobic acetylenotroph in the phylum *Actinobacteria* was identified using metagenomic analysis. These results demonstrate that the coupling of acetylenotrophy and reductive dechlorination can occur in the environment with native bacteria and broaden our understanding of biotransformation at contaminated sites containing both TCE and C₂H₂.

IMPORTANCE Understanding the complex metabolisms of microbial communities in contaminated groundwaters is a challenge. PCE and TCE are among the most common groundwater contaminants in the United States that, when exposed to certain minerals, exhibit a unique abiotic degradation pathway in which C₂H₂ is a product. C₂H₂ can act as both an inhibitor of TCE dechlorination and of supporting metabolisms and an energy source for acetylenotrophic bacteria. Here, we combine laboratory microcosm studies with computational approaches to enrich and characterize an environmental microbial community that couples two uncommon metabolisms, demonstrating unique metabolic interactions only yet reported in synthetic, laboratory-constructed settings. Using this comprehensive approach, we have identified the first reported anaerobic acetylenotroph in the phylum *Actinobacteria*, demonstrating the yet-undescribed diversity of this metabolism that is widely considered to be uncommon.

KEYWORDS acetylene, TCE, dechlorination, enrichment, trichloroethene

Acetylene (C₂H₂) is a colorless, volatile hydrocarbon that is present in trace amounts in Earth's modern atmosphere (1). In microbiology, C₂H₂ is commonly known as an inhibitor of microbial processes (2), including trichloroethene (TCE) reductive dechlorination (3) and supporting metabolisms such as fermentation (4), nitrogen fixation (5), denitrification (6), and methane oxidation (7). Despite its role as an inhibitor, C₂H₂ can also be used as a metabolic substrate supporting the growth of anaerobic and aerobic

Citation Gushgari-Doyle S, Oremland RS, Keren R, Baesman SM, Akob DM, Banfield JF, Alvarez-Cohen L. 2021. Acetylene-fueled trichloroethene reductive dechlorination in a groundwater enrichment culture. *mBio* 12: e02724-20. <https://doi.org/10.1128/mBio.02724-20>.

Editor Daniel Barkan, The Hebrew University of Jerusalem

Copyright © 2021 Gushgari-Doyle et al. This is an open-access article distributed under the terms of the [Creative Commons Attribution 4.0 International license](https://creativecommons.org/licenses/by/4.0/).

Address correspondence to Lisa Alvarez-Cohen, alvarez@ce.berkeley.edu.

Received 24 September 2020

Accepted 23 November 2020

Published 2 February 2021

acetylenotrophic microorganisms (8). To date, there are 15 known strains of acetylenotrophs; aerobic acetylenotrophs include *Mycobacterium lacticola*, multiple *Rhodococcus* spp., and *Bacillus* spp. (8). To date, the only known anaerobic acetylenotrophs belong to the genus *Pelobacter* including *P. acetylenicus* and *Pelobacter* sp. strain SFB93 (8–10). These *Pelobacter* strains use acetylene hydratase to hydrate acetylene which is then fermented to produce H₂, acetate, and ethanol (9–12). The enzyme from *P. acetylenicus* is the only well-characterized acetylene hydratase and is suggested to be structurally different from acetylene-transforming enzymes found in aerobic acetylenotrophs, although no such enzyme from aerobic acetylenotrophs has yet been characterized (13).

H₂ is widely utilized as an electron donor for many microbial metabolisms, including TCE and perchloroethene (PCE) reductive dechlorination (14, 15). TCE and PCE are toxic chlorinated solvents that have become prevalent groundwater contaminants due to improper storage and handling practices (16). The only organisms known to reductively dechlorinate PCE and TCE entirely to the benign end product ethene are bacterial *Dehalococcoides mccartyi* strains (14, 17–19). *D. mccartyi* has strict requirements for exogenous substances such as hydrogen as electron donor, acetate as carbon source, and cofactor vitamin B₁₂ (14, 15, 20, 21). Even when all metabolic requirements are met, *D. mccartyi* commonly does not grow well in axenic culture (15, 20). Since *D. mccartyi* strains are heavily reliant on other members of their microbial communities for robust growth, previous studies have focused on the characterization of constructed consortia and environmental enrichments to develop sustainable PCE and TCE bioremediation strategies (3, 15, 21–28).

Interestingly, C₂H₂ can be produced at TCE-contaminated sites by means of the abiotic transformation of TCE catalyzed by zero-valent iron or other minerals including iron sulfide (29–32). A number of previous studies have evaluated the effects of acetylene and other inhibitors on TCE dechlorination by *D. mccartyi* strains (3, 28, 33, 34) and consumption of acetylene produced by abiotic TCE degradation (35). However, the promotion of PCE and TCE bioremediation driven by their abiotic transformation products has been much less studied. Mao et al. reported the successful utilization of acetylene as the sole electron donor supporting TCE dechlorination in laboratory-constructed cocultures containing the acetylenotroph *Pelobacter* sp. strain SFB93 with *D. mccartyi* strains (3). That study also reported successful utilization of acetylene as the sole electron donor in a TCE-dechlorinating enrichment culture bioaugmented with *Pelobacter* sp. strain SFB93 (3). Based on the results of the laboratory-based experiments, we hypothesize that this unique coupling of acetylenotrophy and TCE dechlorination occurs in natural systems. As C₂H₂ is known to inhibit TCE dechlorination and organisms supporting biotic TCE dechlorination (26, 36), it is important to develop engineered solutions for remediation of TCE-contaminated sites with conditions promoting acetylene production.

In this study, we cultivated a groundwater enrichment culture that utilized C₂H₂ as the sole electron donor and organic carbon source while reducing PCE and TCE to vinyl chloride (VC). The culture (36BR-A-TCE) was enriched from groundwater collected from well 36BR-A at the Naval Air Warfare Center (NAWC) in Trenton, NJ. 16S rRNA gene analysis was conducted to identify the community structure within the microcosms, and metagenomic analysis was performed to determine the organisms responsible for acetylenotrophy. A novel anaerobic acetylenotroph was identified from the phylum *Actinobacteria*, which contains no other reported anaerobic acetylenotrophs. The results of this study will assist in the development of robust bioremediation strategies at complex contaminated sites.

RESULTS

C₂H₂ fuels PCE and TCE dechlorination in 36BR-A-TCE. Anaerobic, acetylenotrophic enrichment cultures were established from groundwater collected from NAWC wells 36BR-A and 73BR-D2 with the addition of mineral medium to provide nutrients and C₂H₂ as the sole electron donor and organic carbon source (see Table S1 and Fig. S1 in the supplemental material). Groundwater amended with acetylene (but no

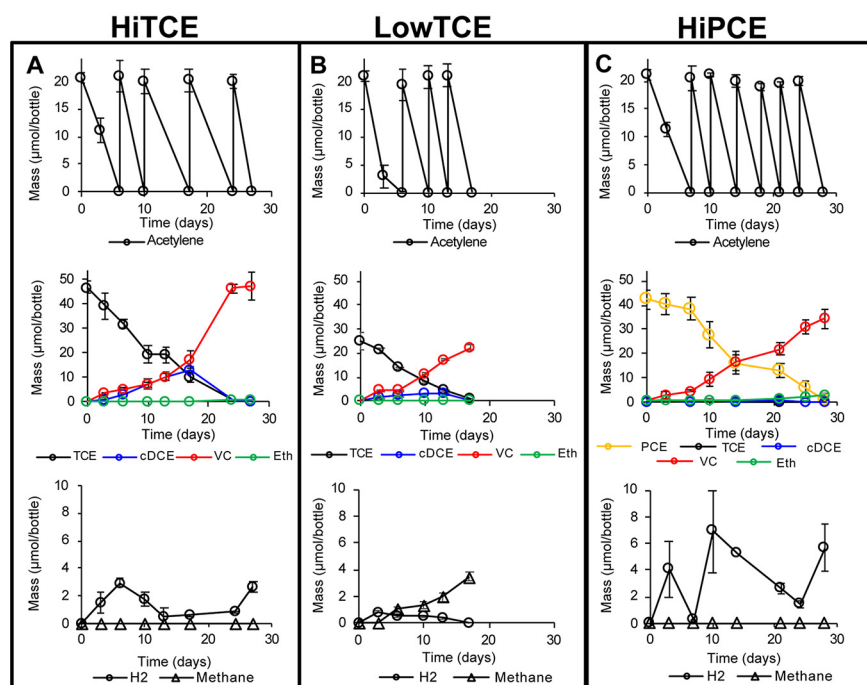


FIG 1 C_2H_2 consumption (top row), ethene and chlorinated ethene consumption and production (middle row), and H_2 and methane production (bottom row) for HiTCE (A), LowTCE (B), and HiPCE (C) growth conditions. Quantities shown in total mass (dissolved plus headspace) per 160-ml serum bottle (100-ml liquid volume). Each acetylene peak denotes external amendment of acetylene. Error bars represent 1 standard deviation of experimental triplicates.

nutrients) showed no consumption of acetylene (Fig. S1). Cultures established from well 36BR-A consumed the most acetylene (50 to 437 μ moles) and were the only cultures that produced methane over the course of incubation (Fig. S1). Therefore, the NAWC acetylenotrophic culture 36BR-A1 was selected for subsequent enrichment with chlorinated solvents.

Culture 36BR-A-TCE was enriched from the NAWC acetylenotrophic culture 36BR-A1 using C_2H_2 as the sole electron donor and organic carbon source, TCE as the terminal electron acceptor, and CO_2 as inorganic carbon source. Complete fermentation of 1 mol C_2H_2 produces 1 mol hydrogen (H_2), which can then serve as the electron donor to reduce 0.5 mol TCE to VC (3). 36BR-A-TCE cultures were amended with 50 μ mol TCE (HiTCE), 25 μ mol TCE (LowTCE), or 50 μ mol PCE (HiPCE) per bottle. C_2H_2 was readily consumed within 7 days of each amendment under all conditions, and $100 \pm 9.4 \mu$ mol, $82 \pm 7.5 \mu$ mol, and $140 \pm 6.6 \mu$ mol C_2H_2 per bottle was amended over the course of the experiment in HiTCE (Fig. 1A), LowTCE (Fig. 1B), and HiPCE (Fig. 1C), respectively. Under the HiTCE condition, $47 \pm 2.4 \mu$ mol of TCE was reduced and $47 \pm 5.7 \mu$ mol of VC per bottle accumulated as the primary reduction product, with trivial amounts of *cis*-dichloroethene (cDCE) and ethene accumulated (Fig. 1A). Aqueous H_2 concentrations in HiTCE remained below 2.9 μ mol/bottle during TCE dechlorination (Fig. 1A), indicating that the H_2 generation rate was roughly equal to its consumption rate and that interspecies hydrogen transfer occurred in the enrichment. No methane production was observed in HiTCE. Under LowTCE conditions, $24 \pm 3.3 \mu$ mol of TCE was reduced and $22 \pm 0.9 \mu$ mol of VC accumulated per bottle, with trivial amounts of *cis*-DCE and ethene (Fig. 1B). Aqueous H_2 concentrations in LowTCE ranged from 0.04 to 0.88 μ mol/bottle during TCE dechlorination, and $3.5 \pm 0.3 \mu$ mol/bottle methane was produced over the course of the experiment (Fig. 1B). Under HiPCE conditions, $42 \pm 4.1 \mu$ mol of PCE was reduced and $41 \pm 3.5 \mu$ mol of VC and $6.1 \pm 1.3 \mu$ mol ethene accumulated per bottle with trivial amounts of TCE and *cis*-DCE (Fig. 1C). Aqueous H_2 concentrations in HiPCE

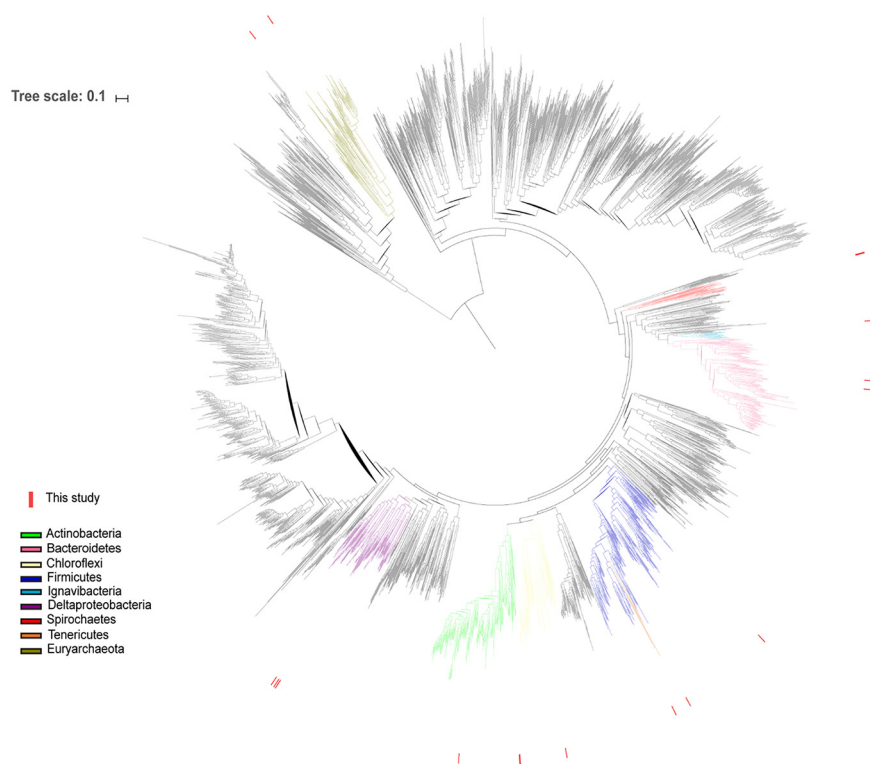


FIG 2 Maximum likelihood phylogenetic tree of organisms in the TCE/acetylene-consuming enrichment culture 36BR-A-TCE and reference organisms from *Bacteria* and *Archaea*. Phyla found in the enrichment are colored, and red marks around the perimeter identify organisms from this study.

ranged from 0.25 to 6.9 $\mu\text{mol}/\text{bottle}$ during PCE-dechlorination, and no methane was produced over the course of the experiment (Fig. 1C). Assuming complete fermentation of C_2H_2 , all H_2 produced by C_2H_2 fermentation under all 3 growth conditions (HiTCE, LowTCE, and HiPCE) could be accounted for by chlorinated solvent reduction, methane production, and residual H_2 measurement within 5% error.

Composition of acetylenotrophic enrichment cultures. 16S rRNA gene analysis was initially performed to identify community structure in 36BR-A-TCE, the NAWC acetylenotrophic enrichment cultures, and the commercial dechlorinating community KB-1, which was augmented to the NAWC field site in 2008 (37, 38). It was determined that no known anaerobic acetylenotrophs, e.g., *Pelobacter acetylenicus* and *Pelobacter* sp. SFB93 from the family *Desulfuromonadaceae* (8), were present in any of the cultures (Fig. S1). An in-depth description of all samples and community diversity can be found in Tables S1, S2, and S3.

To identify the acetylenotroph in 36BR-A-TCE, a genome-centric metagenomic analysis was performed on 36BR-A-TCE, resulting in 10 nearly complete (>90% complete) genomes, three genomes of good quality (>75% complete), and five moderately complete (55 to 65% complete) genomes (Fig. 2 and Table S4). From the metagenome sequence reads, the recovered *D. mccartyi* genome, presumed to be responsible for TCE dechlorination in 36BR-A-TCE, exhibited a relative community abundance of 40.6%. The genome for *D. mccartyi* encoded 7 reductive dehalogenase proteins *rdhA* and their corresponding anchor proteins *rdhB*. The average nucleotide identity (ANI) of *D. mccartyi* from 36BR-A-TCE was compared with 32 *D. mccartyi* strains with complete genomes available from the NCBI database (Fig. S2) and exhibited highest similarity (>99.5%) to *D. mccartyi* strain DCMB5. The qPCR analysis of reductive dehalogenase genes showed that *tceA* was present in $(460 \pm 100) \times 10^6$ copies/ml, *bvcA* was present in $(1.2 \pm 0.1) \times 10^6$ copies/ml, and *vcrA* was not observed in the enrichment.

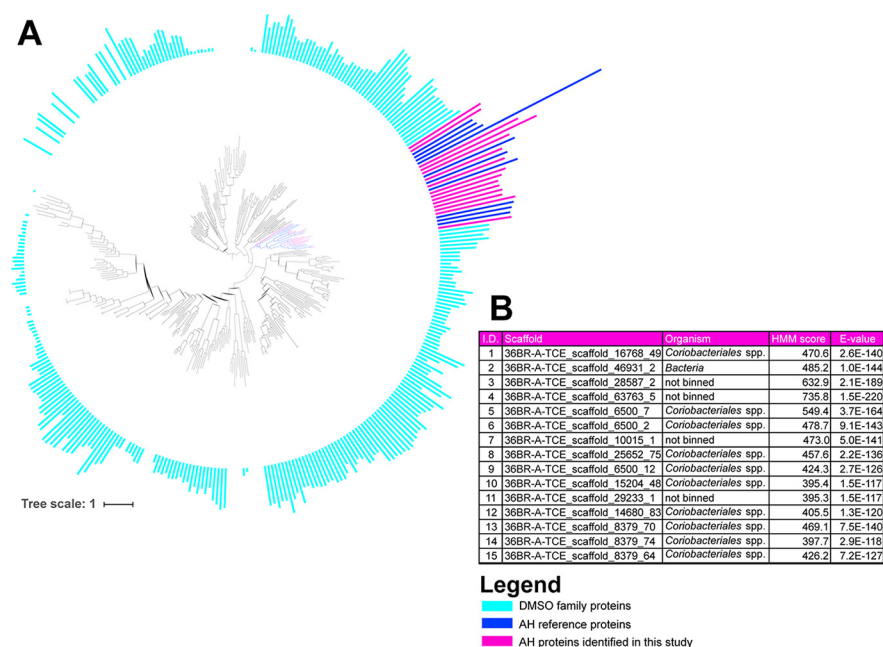


FIG 3 (A) Maximum likelihood tree of MopB superfamily of proteins. Branches colored dark blue are proteins that fall within the acetylene hydratase (AH) cluster from published references. Branches colored magenta are identified AH proteins from this study. Bars around the perimeter quantify the HMM score corresponding to each protein. Magenta bars are identified starting with 1 at the top to 15 at the bottom. DMSO, dimethyl sulfoxide. (B) The table details the scaffold containing the protein-encoding gene, binned organism, and HMM score of the protein. All *Coriobacteriales* scaffolds are from a single binned genome. The HMM score cutoff for AH identification in this analysis was 385.

The *Coriobacteriales* genome exhibited the second-highest relative abundance at 28.5% of the community. The hidden Markov model (HMM) constructed in this study for identification of putative acetylene hydratases yielded a significant similarity of the identified genes to known acetylene hydratases (scores = [395.3, 735.8], cutoff score = 385.0, E values = [1.0×10^{-117} , 1.5×10^{-220}], cutoff E value = 1.9×10^{-113}), and the identified genes clustered within the acetylene hydratase cluster of the MopB superfamily (Fig. 3A and B). Based on the HMM analysis, the genes most likely to be responsible for acetylenotrophic metabolism in 36BR-A-TCE were from the *Coriobacteriales* genome. The genomic contexts of the identified genes were compared to those of the anaerobic acetylenotrophs *P. acetylenicus* and *Pelobacter* sp. SFB93 (Fig. 4). NCBI BLASTp was performed on amino acid sequences inferred from protein-encoding genes surrounding the acetylene hydratase genes in all three compared genomes, including the phenol/MetA degradation superfamily proteins, which were found to be transporters. Other metabolic genes found in the *Coriobacteriales* genome include those for nitrate and nitrite reduction (LAC_acetylene_scaffold_13414_67-68), sulfate and sulfite reduction (LAC_acetylene_scaffold_8379_87), and fermentation (multiple scaffolds), indicating this organism is a facultative acetylenotroph.

We identified two methanogenic archaea in 36BR-A-TCE: *Methanosaeta concilii* and *Methanobacterium* species with a combined 12 genes encoding subunits of methanogenesis marker gene methyl-coenzyme M reductase.

DISCUSSION

In this study, we report the first successful environmental enrichment with the capacity to dechlorinate PCE and TCE to VC using acetylene as the sole electron donor and organic carbon source via fermentation. These results demonstrate that microbial communities in chlorinated solvent-contaminated groundwater have the potential for dechlorination supported by acetylenotrophy.

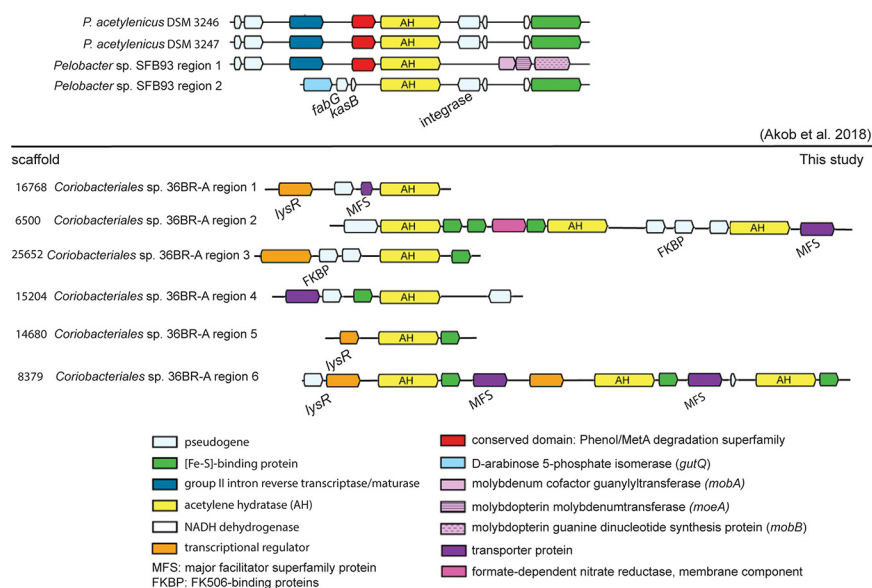


FIG 4 Genomic context of acetylene hydratase genes in *Coriobacteriales* spp. (this study) versus *P. acetylenicus* and *Pelobacter* sp. SFB93 (8).

In 36BR-A-TCE, *D. mccartyi* was responsible for PCE and TCE dechlorination, while acetylenotrophy was attributed to *Coriobacteriales* spp. The enrichment also exhibited methanogenesis under LowTCE conditions, likely performed by *Methanosaeta concilii* and *Methanobacterium* spp., as indicated by the metagenomic analysis. In LowTCE, between 46 and 75% of produced H_2 was used to reduce TCE to VC and between 13 and 20% was used to produce methane. C_2H_2 has been previously shown to inhibit both methanogenesis and reductive dehalogenation (3, 39), while high concentrations of TCE have been shown to inhibit methanogenesis (40). However, continuous C_2H_2 fermentation allowed for TCE dechlorination and methanogenesis to both occur under LowTCE conditions by removing the potential inhibitor and providing H_2 and acetate to the enrichment, which are both metabolic requirements of *D. mccartyi* (14). In this study, H_2 mass balances indicated that 1 mol C_2H_2 yielded 1 mol H_2 and PCE/TCE reductive dechlorination and methanogenesis accounted for all H_2 consumption within 5% error.

Microbial community characterization based on 16S rRNA gene sequence analysis showed similarity between communities in acetylenotrophic enrichment cultures from NAWC groundwater wells 36BR-A and 73BR-D2 (see Fig. S3 in the supplemental material). Similar phyla were reported using 16S rRNA gene sequencing and metagenomic analysis in 36BR-A-TCE. The presence of *Actinobacteria* in enrichments from both 36BR-A and 73BR-D2 groundwaters and lack thereof in the KB-1 commercial culture indicate that the acetylenotrophic *Coriobacteriales* species (*Actinobacteria*) was indigenous to the NAWC site. Additionally, the increase in relative abundance of *Dehalococcoidaceae* (the family to which belongs TCE-dechlorinating *D. mccartyi*) from 36BR-A1 to 36BR-A-TCE supports that *D. mccartyi* is responsible for PCE and TCE dechlorination. It should be noted that differences in relative abundance of community members in 36BR-A-TCE between 16S rRNA gene sequencing and metagenomic analysis may be due to copy number variance in the 16S rRNA gene or differences in sequencing depth.

The *D. mccartyi* strain in culture 36BR-A-TCE contains the reductive dehalogenase *tceA*, as evident by qPCR with gene-specific probes and primers and confirmed with metagenome analysis. Reductive dehalogenase *bvcA* was also found in 36BR-A-TCE via qPCR; however, it was present at concentrations 2 orders of magnitude lower than *tceA*. To investigate the presence of *bvcA*, a protein-protein BLAST was performed using *BvcA* against all predicted proteins in the 36BR-A-TCE metagenome, which

returned one positive hit of an unnamed reductive dehalogenase in the *D. mccartyi* genome (LAC_acetylene_scaffold_8379_87, E value = $9e-131$). Due to sequence similarity (but not full sequence identity), it is likely that the *bvcA* primers amplified this reductive dehalogenase with low fidelity, causing a false-positive qPCR result for *bvcA*. DCMB5, the strain with the highest ANI to the 36BR-A-TCE *D. mccartyi* strain, also contains the reductive dehalogenase *tceA*. The reductive dehalogenase *bvcA* was initially identified in *D. mccartyi* BAV1 and has been shown to metabolically transform DCE and VC to ethene (41). Because significant VC dechlorination was not observed in the cultures, it is not likely that the VC is the metabolic substrate for the unnamed reductive dehalogenase that caused the *bvcA* qPCR result. The reductive dehalogenase *vcrA* was not found in 36BR-A-TCE.

DCMB5, the *D. mccartyi* strain most closely related to the one in 36BR-A-TCE, was isolated from a contaminated site in Bitterfeld, Germany, that was not bioaugmented with the KB-1 commercial community (42, 43). An ANI of >99.5% constitutes identification of the same strain (44). While the *D. mccartyi* strain from this study is in the same clade as the KB-1 strain, its phylogenetic proximity to DCMB5 rather than the KB-1 strains suggests this *D. mccartyi* strain was native to the NAWC site.

The *Coriobacteriales* species identified in this study is the first reported anaerobic acetylenotroph outside the *Deltaproteobacteria* phylum. Rather, *Coriobacteriales* belongs to the phylum *Actinobacteria*, the same phylum as aerobic acetylenotrophs *M. lacticola* and *Rhodococcus* spp. While organisms from the order *Coriobacteriales* have historically been associated with animal host microbiomes, there have been several reports of environmental *Coriobacteriales* in the past decade as more environmental communities are studied (45–50). The identified acetylene hydratase genes were analyzed using NCBI BLAST (51) against the genomes of *P. acetylenicus*, *Pelobacter* sp. SFB93, and aerobic acetylenotrophs belonging to the phylum *Actinobacteria*. It was found that the acetylene hydratases identified here show highest sequence similarity to acetylene hydratases and genes identified as molybdopterin oxidoreductase family proteins in *P. acetylenicus*, *Pelobacter* sp. SFB93, and *Rhodococcus opacus* (Table S5). The acetylene hydratase of *R. opacus* is known to differ from that of *P. acetylenicus* as it does not show cross-reactivity with antibodies raised to the enzyme of *P. acetylenicus* and it is molybdenum dependent, as opposed to tungsten dependent (12, 13). As *R. opacus* is an aerobic acetylenotroph, the results from NCBI BLAST indicate that enzymes using acetylene as the substrate have conserved regions, even between aerobic and anaerobic bacteria. It is important to note that the only acetylene hydratase enzyme isolated and characterized to date is that of *P. acetylenicus* (52, 53). Further research is required to biochemically verify the acetylene hydratases identified in this study and in other previous work.

Based on genomic context analysis and comparison of the acetylene hydratase genes, it can be deduced that Fe-S-binding proteins are important for acetylene hydratase function due to their presence nearly adjacent to all putative and reference acetylene hydratases but one (*Coriobacteriales* sp. scaffold 16768). In four of six *Coriobacteriales* scaffolds containing acetylene hydratases, transporter proteins (mostly from the major facilitator superfamily) are found adjacent. As the phenol/MetA degradation superfamily proteins found adjacent to *Pelobacter* acetylene hydratases are also transporter proteins, these transporters may also be essential to acetylene hydratase function. Lastly, the transcriptional regulator *lysR* was found in three of six acetylene hydratase-containing *Coriobacteriales* scaffolds, while the *marR* transcriptional regulator was found upstream of the *Pelobacter* sp. SFB93 acetylene hydratase (8, 54). The *lysR* and *marR* transcriptional regulators both contain helix-turn-helix motifs and have been found to regulate degradation of organic compounds, among many other cellular functions (55, 56). These similar genetic contexts suggest positive identification of the acetylene hydratase proteins in the *Coriobacteriales* species from 36BR-A-TCE.

The identification of an anaerobic acetylenotroph outside the *Deltaproteobacteria* phylum suggests that acetylenotrophy may be a more common metabolism than originally thought, as postulated by Akob et al. (8). Future research efforts aimed at isolating

and characterizing the organism responsible for acetylenotrophy in this enrichment culture, as well as isolating and characterizing more acetylene hydratase enzymes, will increase knowledge of this relatively undescribed metabolism. Furthermore, it has become increasingly clear over the past few decades that organisms performing reductive dehalogenation, including *D. mccartyi* strains, are commonly found in a variety of environments. In this work, PCE and TCE were dechlorinated to VC. In future work, or for application of this community physiology for bioremediation, additional optimization should be enacted to increase ethene yield by the presence of VC reducers *in situ* or bioaugmentation with a *D. mccartyi* strain capable of metabolic transformation of VC to ethene. As characterization and remediation strategies for single environmental contaminants become more robust, it is important to begin synthesizing remediation strategies that cover a broader range of potential environments. This study begins to identify potential remediation strategies for environments that fostered production of acetylene in PCE- and TCE-contaminated sites.

MATERIALS AND METHODS

Chemicals. TCE and PCE (99.6%, American Chemical Society [ACS] reagent) were obtained from Acros Organics (Geel, Belgium). C_2H_2 (>99.2%) was obtained from Praxair, Inc. (San Ramon, CA, USA), or generated in the laboratory by reacting calcium carbide (CaC_2) with water. All other chemicals used were of reagent-grade quality or higher. All other gases (air, nitrogen, hydrogen, and nitrogen- CO_2 mixture) were obtained from Praxair, Inc. (San Ramon, CA, USA).

Field sampling. The Naval Air Warfare Center (NAWC) site is a long-term U.S. Geological Survey (USGS) study site with extensive groundwater TCE contamination (57–59). The site is a 0.24-km² facility in West Trenton, NJ, and the hydrogeology and extent of TCE, *cis*-dichloroethene (cDCE), and VC plumes have been previously described (57, 59). An *in situ* bioaugmentation experiment was initiated at the NAWC site on 15 October 2008 by injecting emulsified soybean oil and sodium lactate (EOS) as an electron donor and the KB-1 bacterial consortium as a source of dehalogenating bacteria (37, 38, 60). For this study, groundwater was collected from wells 36BR-A and 73BR-D2, which are injection and monitoring wells for the bioaugmentation experiment, respectively. Unfiltered groundwater samples were collected by peristaltic pumping into sterile, 1-liter amber glass bottles (without headspace) on 11 June 2015. Samples were stored on ice and shipped to the USGS in Menlo Park, CA. Upon arrival at the USGS, groundwater was transferred to crimp-sealed, nitrogen-flushed serum bottles and stored at 5°C until further analysis.

Bacterial cultures and growth conditions. To enrich acetylenotrophs, groundwater samples were mixed with an equal volume of anaerobic freshwater culture medium SeFr1 (10, 61). SeFr1 (pH 7.3) contains, per liter, 0.225 g K_2HPO_4 , 0.225 g KH_2PO_4 , 0.46 g NaCl, 0.225 g $(NH_4)_2SO_4$, 0.117 g $MgSO_4 \cdot 7H_2O$, 0.06 g $CaCl_2 \cdot 2H_2O$, 3 mg $Na_2WO_4 \cdot 2H_2O$, 4.2 g NaHCO₃, 1.0 ml SL10 trace element solution (90), and 1.0 ml vitamin solution (61). Twenty milliliters of the 1:1 groundwater-SeFr1 mixture was then transferred to gas-tight 60-ml serum bottles with 100% nitrogen headspace and 0.05 ml or 0.1 ml 100% acetylene. When acetylene concentrations were depleted below detection using gas chromatography with flame ionization detection (GC-FID), more acetylene was added. After depletion of multiple acetylene doses, a 5-ml subsample of the enrichment culture was transferred to 50 ml of new SeFr1 medium and amended with 0.1 ml 100% acetylene. Bottles were incubated at 28°C in the dark without agitation. All cultivation was performed using anaerobic, aseptic techniques.

To enrich for TCE dechlorination, enrichment cultures from well 36BR-A were first initiated for acetylenotrophy and then for TCE dechlorination once stable acetylene consumption was observed. 36BR-A-TCE was grown in the BAV1 defined mineral salts medium (previously described) in 160-ml serum bottles with 100 ml liquid volume and 80:20 N_2/CO_2 headspace (21), $46 \pm 1.5 \mu\text{mol}$ TCE as terminal electron acceptor, $230 \pm 11 \mu\text{mol}$ acetylene as sole electron donor and additional carbon source, and vitamins including 100 μM vitamin B₁₂ (62). 36BR-A-TCE was grown under these conditions and continuously subcultured for 18 months to achieve a stable community structure before the described experimental characterization. Heat-killed controls were created by autoclaving (121°C, 203 kPa, 1 h) and monitored (data not shown). Bottles were incubated at 28°C without light or shaking.

Analytical methods. Acetylene concentrations in the initial acetylenotrophic enrichments were measured using GC-FID using a HayeSep A (80/100; 3.2 mm outside diameter [o.d.] \times 2.44 m) column as described previously (10). Chloroethenes, ethene, methane, and acetylene were measured with 100- μl headspace samples on an Agilent 7890A gas chromatograph equipped with a flame ionization detector and a 30-m J&W capillary column with an inside diameter of 0.32 mm (Agilent Technologies, Santa Clara, CA, USA). A gradient temperature program method was used as previously described (63). Hydrogen was measured by reduced gas detection-gas chromatography using 100- μl headspace samples on a Peak Laboratories Peak Performer 1 gas chromatograph equipped with a reducing compound photometer (RCP) equipped with 16-inch Uni 1S 60/80 and 81-inch MS13X 60/80 columns according to the manufacturer's instructions (Peak Laboratories, Mountain View, CA, USA). The mass of each compound was calculated based on gas-liquid equilibrium by using Henry's law constants at 28°C according to mass ($\mu\text{mol}/\text{bottle}$) = $C_1 \times V_1 + C_g \times V_g$.

DNA extraction and cell number quantification. Liquid samples (1.5 ml) were collected for cell density measurements, and cells were pelleted by centrifugation (21,000 $\times g$, 10 min at 4°C). Samples were taken from 36BR-A-TCE on day 27 of the HiTCE experiment, once all TCE was consumed. For all

other enrichments, samples were taken after consumption of all amended acetylene (see Table S1 in the supplemental material). Genomic DNA of 36BR-A-TCE was extracted from cell pellets using the DNeasy blood and tissue kit (Qiagen, Valencia, CA, USA) according to the manufacturer's instructions for Gram-positive bacteria. Genomic DNA of all other enrichments was extracted from cell pellets using the Mo Bio PowerSoil kit according to the manufacturer's instructions (Mo Bio, CA). DNA quantification was performed using the Qubit 3 fluorometer (Invitrogen, Carlsbad, CA, USA) with the Qubit double-stranded DNA (dsDNA) high-sensitivity (HS) assay kit per manufacturer's instructions. qPCR using SYBR green-based detection reagents was applied to quantify gene copy numbers of common reductive dehalogenases associated with TCE-reducing bacteria with *D. mccartyi* *tceA*, *bvcA*, and *vcrA* gene probes and primers as previously described (64).

Microbial community structure analysis. Liquid samples (20 ml) were collected for genomic DNA (gDNA) extraction and community structure analysis via 16S rRNA gene v4 hypervariable region. Cells were harvested and DNA extracted as described above. For 36BR-A-TCE, 10 μ l of 10-ng/ μ l gDNA was sent to the QB3 Vincent J. Coates Genomics Sequencing Laboratory at UC Berkeley for Illumina 16S iTag sequencing. For all other enrichments, DNA extracts were sent to Michigan State University's Research Technology Support Facility (RTSF; East Lansing, MI, USA) for Illumina 16S iTag sequencing. Microbial sequence data were processed for quality control, alignment, and taxonomic assignment using MOTHUR v.1.38.1, based on the Silva 123 nonredundant database (65–68) using the USGS Advanced Research Computing (ARC) Yeti high-performance computing facility. Diversity indices were calculated using MOTHUR v.1.38.1 (66).

Metagenome community analysis. A liquid sample (20 ml) was collected for gDNA extraction and community structure analysis via metagenome sequencing. Cells were harvested and DNA extracted as described above. Eighty microliters of 20-ng/ μ l gDNA was sent to the QB3 Vincent J. Coates Genomics Sequencing Laboratory at UC Berkeley for library preparation and sequencing on the Illumina HiSeq4000 (Illumina, San Diego, CA). The raw data sequence reads were processed and analyzed following the ggKbase standard operating procedure (SOP) (<https://ggkbase-help.berkeley.edu/overview/data-preparation-metagenome/>). In summary, Illumina adapters and trace contaminants were removed (BBTools, JGI), and raw sequences were quality-trimmed with Sickle (69). Paired-end reads were assembled using IDBA_UD with the precorrection option and default settings (70). For coverage calculations, reads were mapped with bowtie2 (71). Genes were predicted by Prodigal (72), and predicted protein sequences were annotated using usearch (73) against KEGG, UniRef100, and UniProt databases. The 16S rRNA gene and tRNA prediction was done with an in-house script and tRNAscan-SE (74), respectively. At this point, the processed data were uploaded to ggKbase for binning.

Manual binning was performed using the ggKbase tool. The parameters for binning were GC% and coverage (CV) distribution, phylogeny of the scaffolds, and single-copy gene inventory. Quality of the manual bins was assessed by the number of bacterial single-copy genes (BSCG) and ribosomal proteins (RP) found in each bin (aiming at finding the full set of genes, while minimizing the multiple copies). In addition to manual binning, automated binning was performed using four binners: ABAWACA1, ABAWACA2 (75), MetaBAT (76), and MaxBin2 (77). For all, the default parameters were chosen.

All bins from both automatic and manual binning tools were input into DASTool (78) to iterate through bins and choose the optimal set. CheckM was run to analyze genome completeness (79). The scaffold-to-bin file created by DASTool was uploaded back to ggKbase, and all scaffolds were rebinned to match the DASTool output. Each of the new bins was manually inspected and refined to remove scaffolds with aberrant GC, coverage, and phylogenetic profile. In all, 13.1 Gbp were sequenced and 98% of the reads were assembled into a total assembly length of 64.45 Mbp (minimum scaffold length of 1,000 bp). Of that, 39.67 Mbp were included in the refined bins.

Phylogenetic analysis of the genomes was based on a set of 15 ribosomal proteins that were selected because they are consistently colocated in a single genomic region, thus avoiding binning-based chimeras (80). Each gene was aligned separately to a set of 3,225 reference genomes, followed by concatenation while keeping the aligned length of each gene intact. A preliminary tree was created by adding the queried genomes to the reference tree using pplacer v1.1.alpha19 (81) and a set of in-house scripts. The tree was uploaded to iTOL (82) for visualization and editing. The final tree was constructed with RAxML in the CIPRES Science Gateway V. 3.3 (83). Relative abundance of organisms in the community was calculated based on (bin coverage)/(sum of all bin coverages).

Analysis of *D. mccartyi* strain diversity was determined by the dereplication tool, dRep (84), using a 99.5% threshold (strain level) for clustering.

Hidden Markov model analysis. A hidden Markov model (HMM) was developed for similarity analysis of putative acetylene hydratase proteins in the 36BR-A-TCE enrichment. The seed sequences used to create the HMM were the confirmed acetylene hydratases of *P. acetylenicus* and *Pelobacter* sp. strain SFB93 and additional sequences found using BLASTp in NCBI. Prior to creating the HMM, the sequence placement in the correct gene cluster within the MopB superfamily tree was checked. Reference sequences for the tree were taken from the NCBI Conserved Domain database as well as from the work of Castelle et al. (85). Sequences were aligned using MAFFT (86), and a tree was constructed with FastTree (87).

Once the seed sequences were selected, an HMM was created using the HMMER suite (88), and cut-off score was assigned based on scores from the reference sequences. The HMM was then used to search for homologous sequences in the metagenome using HMMER suite default parameters. The sequences above the cutoff were added to the reference sequences and aligned, and a RAxML tree was constructed. The tree with the HMM scores was visualized in iTOL.

Data availability. The metagenome of culture 36BR-A-TCE is available from the NCBI GenBank database under BioProject number [PRJNA615907](https://www.ncbi.nlm.nih.gov/bioproject/PRJNA615907). 16S rRNA gene sequence data are deposited in the NCBI Sequence Read Archive under BioProject number [PRJNA615907](https://www.ncbi.nlm.nih.gov/bioproject/PRJNA615907) and accession numbers [SRX8026671](https://www.ncbi.nlm.nih.gov/seq/submit/seqs/SRX8026671) to

SRX8026678. Resolved genomes from metagenome analysis have been made public (https://ggkbase.berkeley.edu/LAC_acetylene_final/organisms). Data from acetylenotrophic cultivation and dechlorination studies are available from the work of Baesman et al. (89).

SUPPLEMENTAL MATERIAL

Supplemental material is available online only.

FIG S1, TIF file, 2.6 MB.

FIG S2, TIF file, 2.7 MB.

FIG S3, TIF file, 2.8 MB.

TABLE S1, DOCX file, 0.01 MB.

TABLE S2, DOCX file, 0.01 MB.

TABLE S3, DOCX file, 0.02 MB.

TABLE S4, DOCX file, 0.02 MB.

TABLE S5, DOCX file, 0.02 MB.

ACKNOWLEDGMENTS

This research was supported by NIEHS Superfund grants P42ES004705 and R01ES024255-03, as well as NASA ROSES-2013, Astrobiology: Exobiology and Evolutionary Biology Program Element grant 13-EXO13-0001, and the U.S. Geological Survey Toxic Substances Hydrology Program and the Water Resources Mission Area.

We thank Yesha Shrestha and Cassandra Harris for laboratory assistance.

Any use of trade, firm, or product names is for descriptive purposes only and does not imply endorsement by the U.S. Government.

REFERENCES

- Cronn D, Robinson E. 1979. Tropospheric and lower stratospheric vertical profiles of ethane and acetylene. *Geophys Res Lett* 6:641–644. <https://doi.org/10.1029/GL006i008p00641>.
- Hyman MR, Arp D. 1988. Acetylene inhibition of metalloenzymes. *Anal Biochem* 173:207–220. [https://doi.org/10.1016/0003-2697\(88\)90181-9](https://doi.org/10.1016/0003-2697(88)90181-9).
- Mao X, Oremland RS, Liu T, Gushgari S, Landers AA, Baesman SM, Alvarez-Cohen L. 2017. Acetylene fuels TCE reductive dechlorination by defined Dehalococcoides/Pelobacter consortia. *Environ Sci Technol* 51:2366–2372. <https://doi.org/10.1021/acs.est.6b05770>.
- Flather DH, Beauchamp EG. 1992. Inhibition of the fermentation process in soil by acetylene. *Soil Biol Biochem* 24:905–911. [https://doi.org/10.1016/0038-0717\(92\)90013-N](https://doi.org/10.1016/0038-0717(92)90013-N).
- Dilworth M. 1966. Acetylene reduction by nitrogen-fixing preparations from *Clostridium pasteurianum*. *Biochim Biophys Acta* 127:285–294. [https://doi.org/10.1016/0304-4165\(66\)90383-7](https://doi.org/10.1016/0304-4165(66)90383-7).
- Fedorova RI, Milekhina EI, Il'ukhina NI. 1973. Possibilities of the method of "gas exchange" for detecting extraterrestrial life—identification of nitrogen-fixing microorganisms. *Izv Akad Nauk SSSR Biol* 6:797–806. (In Russian.)
- De Bont JAM, Mulder EG. 1974. Nitrogen fixation and co-oxidation of ethylene by a methane-utilizing bacterium. *J Gen Microbiol* 83:113–121. <https://doi.org/10.1099/00221287-83-1-113>.
- Akob DM, Sutton JM, Fierst JL, Haase KB, Baesman S, Luther GW, III, Miller LG, Oremland RS. 2018. Acetylenotrophy: a hidden but ubiquitous microbial metabolism? *FEMS Microbiol Ecol* 94:fy103. <https://doi.org/10.1093/femsec/fy103>.
- Schink B. 1985. Fermentation of acetylene by an obligate anaerobe, *Pelobacter acetylenicus* sp. nov. *Arch Microbiol* 142:295–301. <https://doi.org/10.1007/BF00693407>.
- Miller LG, Baesman SM, Kirshtein J, Voytek MA, Oremland RS. 2013. A biogeochemical and genetic survey of acetylene fermentation by environmental samples and bacterial isolates. *Geomicrobiol J* 30:501–516. <https://doi.org/10.1080/01490451.2012.732662>.
- Seitz H-J, Siñeriz F, Schink B, Conrad R. 1990. Hydrogen production during fermentation of acetoin and acetylene by *Pelobacter acetylenicus*. *FEMS Microbiol Lett* 71:83–87. <https://doi.org/10.1111/j.1574-6968.1990.tb03802.x>.
- Rosner BM, Schink B. 1995. Purification and characterization of acetylene hydratase of *Pelobacter acetylenicus*, a tungsten iron-sulfur protein. *J Bacteriol* 177:5767–5772. <https://doi.org/10.1128/jb.177.20.5767-5772.1995>.
- Rosner BM, Rainey FA, Kroppenstedt RM, Schink B. 1997. Acetylene degradation by new isolates of aerobic bacteria and comparison of acetylene hydratase enzymes. *FEMS Microbiol Lett* 148:175–180. <https://doi.org/10.1111/j.1574-6968.1997.tb10285.x>.
- Maymó-Gatell X, Chien Y, Gossett JM, Zinder SH. 1997. Isolation of a bacterium that reductively dechlorinates tetrachloroethene to ethene. *Science* 276:1568–1571. <https://doi.org/10.1126/science.276.5318.1568>.
- He J, Ritalahti KM, Aiello MR, Löffler FE. 2003. Complete detoxification of vinyl chloride by an anaerobic enrichment culture and identification of the reductively dechlorinating population as a *Dehalococcoides* species. *Appl Environ Microbiol* 69:996–1003. <https://doi.org/10.1128/aem.69.2.996-1003.2003>.
- Hopple JA, Delzer GC, Kingsbury JA. 2009. Anthropogenic organic compounds in source water of selected community water systems that use groundwater, 2002–05. Scientific investigations report 2009-5200. US Geological Survey, Reston, VA. <https://pubs.er.usgs.gov/publication/sir20095200>.
- Freedman DL, Gossett JM. 1989. Biological reductive dechlorination of tetrachloroethylene and trichloroethylene to ethylene under methanogenic conditions. *Appl Environ Microbiol* 55:2144–2151. <https://doi.org/10.1128/AEM.55.9.2144-2151.1989>.
- He J, Sung Y, Dollhopf ME, Fathepure BZ, Tiedje JM, Löffler FE. 2002. Acetate versus hydrogen as direct electron donors to stimulate the microbial reductive dechlorination process at chloroethene-contaminated sites. *Environ Sci Technol* 36:3945–3952. <https://doi.org/10.1021/es025528d>.
- Cupples AM, Spormann AM, McCarty PL. 2003. Growth of a *Dehalococcoides*-like microorganism on vinyl chloride and cis-dichloroethene as electron acceptors as determined by competitive PCR. *Appl Environ Microbiol* 69:953–959. <https://doi.org/10.1128/aem.69.2.953-959.2003>.
- He J, Ritalahti KM, Yang K-L, Koenigsberg SS, Löffler FE. 2003. Detoxification of vinyl chloride to ethene coupled to growth of an anaerobic bacterium. *Nature* 424:62–65. <https://doi.org/10.1038/nature01717>.
- He J, Holmes VF, Lee PKH, Alvarez-Cohen L. 2007. Influence of vitamin B₁₂ and cocultures on the growth of *Dehalococcoides* isolates in defined medium. *Appl Environ Microbiol* 73:2847–2853. <https://doi.org/10.1128/AEM.02574-06>.
- Duhamel M, Wehr SD, Yu L, Rizvi H, Seepersad D, Dworatzek S, Cox EE, Edwards EA. 2002. Comparison of anaerobic dechlorinating enrichment cultures maintained on tetrachloroethene, trichloroethene, cis-dichloroethene and vinyl chloride. *Water Res* 36:4193–4202. [https://doi.org/10.1016/S0043-1354\(02\)00151-3](https://doi.org/10.1016/S0043-1354(02)00151-3).
- Freeborn RA, West KA, Bhupathiraju VK, Chauhan S, Rahm BG, Richardson

- RE, Alvarez-Cohen L. 2005. Phylogenetic analysis of TCE-dechlorinating consortia enriched on a variety of electron donors. *Environ Sci Technol* 39:8358–8368. <https://doi.org/10.1021/es048003p>.
24. Men Y, Feil H, Verberkmoes NC, Shah MB, Johnson DR, Lee PKH, West KA, Zinder SH, Andersen GL, Alvarez-Cohen L. 2012. Sustainable syntrophic growth of *Dehalococcoides ethenogenes* strain 195 with *Desulfovibrio vulgaris* Hildenborough and *Methanobacterium congolense*: global transcriptomic and proteomic analyses. *ISME J* 6:410–421. <https://doi.org/10.1038/ismej.2011.111>.
 25. Brisson VL, West KA, Lee PKH, Tringe SG, Brodie EL, Alvarez-Cohen L. 2012. Metagenomic analysis of a stable trichloroethene-degrading microbial community. *ISME J* 6:1702–1714. <https://doi.org/10.1038/ismej.2012.15>.
 26. Hug LA, Beiko RG, Rowe AR, Richardson RE, Edwards EA. 2012. Comparative metagenomics of three *Dehalococcoides*-containing enrichment cultures: the role of the non-dechlorinating community. *BMC Genomics* 13:327. <https://doi.org/10.1186/1471-2164-13-327>.
 27. Mao X, Stenuit B, Polasko A, Alvarez-Cohen L. 2015. Efficient metabolic exchange and electron transfer within a syntrophic trichloroethene-degrading coculture of *Dehalococcoides mccartyi* 195 and *Syntrophomonas wolfei*. *Appl Environ Microbiol* 81:2015–2024. <https://doi.org/10.1128/AEM.03464-14>.
 28. Mao X, Polasko A, Alvarez-Cohen L. 2017. Effects of sulfate reduction on trichloroethene dechlorination by *Dehalococcoides*-containing microbial communities. *Appl Environ Microbiol* 83:e03384-16. <https://doi.org/10.1128/AEM.03384-16>.
 29. Roberts AL, Totten LA, Arnold WA, Burris DR, Campbell TJ. 1996. Reductive elimination of chlorinated ethylenes by zero-valent metals. *Environ Sci Technol* 30:2654–2659. <https://doi.org/10.1021/es9509644>.
 30. Campbell TJ, Burris DR, Roberts AL, Wells JR. 1997. Trichloroethylene and tetrachloroethylene reduction in a metallic iron–water–vapor batch system. *Environ Toxicol Chem* 16:625–630.
 31. Butler EC, Hayes KF. 1999. Kinetics of the transformation of trichloroethylene and tetrachloroethylene by iron sulfide. *Environ Sci Technol* 33:2021–2027. <https://doi.org/10.1021/es9809455>.
 32. Arnold WA, Roberts AL. 2000. Pathways and kinetics of chlorinated ethylene and chlorinated acetylene reaction with Fe(0) particles. *Environ Sci Technol* 34:1794–1805. <https://doi.org/10.1021/es990884q>.
 33. Pon G, Hyman MR, Semprini L. 2003. Acetylene inhibition of trichloroethene and vinyl chloride reductive dechlorination. *Environ Sci Technol* 37:3181–3188. <https://doi.org/10.1021/es026352i>.
 34. Gushgari-Doyle S, Alvarez-Cohen L. 2020. Effects of arsenic on trichloroethene–dechlorination activities of *Dehalococcoides mccartyi* 195. *Environ Sci Technol* 54:1276–1285. <https://doi.org/10.1021/acs.est.9b06527>.
 35. Yu R, Andrachek RG, Lehmicke LG, Freedman DL. 2018. Remediation of chlorinated ethenes in fractured sandstone by natural and enhanced biotic and abiotic processes: a crushed rock microcosm study. *Sci Total Environ* 626:497–506. <https://doi.org/10.1016/j.scitotenv.2018.01.064>.
 36. Lee PKH, Dill BD, Louie TS, Shah M, Verberkmoes NC, Andersen GL, Zinder SH, Alvarez-Cohen L. 2012. Global transcriptomic and proteomic responses of *Dehalococcoides ethenogenes* strain 195 to fixed nitrogen limitation. *Appl Environ Microbiol* 78:1424–1436. <https://doi.org/10.1128/AEM.06792-11>.
 37. Shapiro AM, Tiedeman CR, Imbrigiotta TE, Goode DJ, Hsieh PA, Lacombe PJ, DeFlaun MF, Drew SR, Curtis GP. 2018. Bioremediation in fractured rock: 2. Mobilization of chloroethene compounds from the rock matrix. *Ground Water* 56:317–336. <https://doi.org/10.1111/gwat.12586>.
 38. Tiedeman CR, Shapiro AM, Hsieh PA, Imbrigiotta TE, Goode DJ, Lacombe PJ, DeFlaun MF, Drew SR, Johnson CD, Williams JH, Curtis GP. 2018. Bioremediation in fractured rock: 1. Modeling to inform design, monitoring, and expectations. *Ground Water* 56:300–316. <https://doi.org/10.1111/gwat.12585>.
 39. Yu Z, Smith GB. 2000. Inhibition of methanogenesis by C1- and C2-polychlorinated aliphatic hydrocarbons. *Environ Toxicol Chem* 19:2212–2217. [https://doi.org/10.1897/1551-5028\(2000\)019<2212:IOBMCA>2.3.CO;2](https://doi.org/10.1897/1551-5028(2000)019<2212:IOBMCA>2.3.CO;2).
 40. Oremland RS, Taylor BF. 1975. Inhibition of methanogenesis in marine sediments by acetylene and ethylene: validity of the acetylene reduction assay for anaerobic microcosms. *Appl Microbiol* 30:707–709. <https://doi.org/10.1128/AEM.30.4.707-709.1975>.
 41. Krajmalnik-Brown R, Holscher T, Thomson IN, Saunders FM, Ritalahti KM, Löffler FE. 2004. Genetic identification of a putative vinyl chloride reductase in *Dehalococcoides* sp. strain BAV1. *Appl Environ Microbiol* 70:6347–6351. <https://doi.org/10.1128/AEM.70.10.6347-6351.2004>.
 42. Bunge M, Kähkönen MA, Rämisch W, Opel M, Vogler S, Walkow F, Salkinoja-Salonen M, Lechner U. 2007. Biological activity in a heavily organohalogen-contaminated river sediment. *Environ Sci Pollut Res Int* 14:3–10. <https://doi.org/10.1065/espr2006.03.298>.
 43. Pöritz M, Goris T, Wubet T, Tarkka MT, Buscot F, Nijenhuis I, Lechner U, Adrian L. 2013. Genome sequences of two dehalogenation specialists—*Dehalococcoides mccartyi* strains BTF08 and DCMB5 enriched from the highly polluted Bitterfeld region. *FEMS Microbiol Lett* 343:101–104. <https://doi.org/10.1111/1574-6968.12160>.
 44. Olm MR, Crits-Christoph A, Diamond S, Lavy A, Matheus Carnevali PB, Banfield JF. 2020. Consistent metagenome-derived metrics verify and delineate bacterial species boundaries. *mSystems* 5:e00731-19. <https://doi.org/10.1128/mSystems.00731-19>.
 45. Ferraz Júnior ADN, Etchebehere C, Zaiat M. 2015. High organic loading rate on thermophilic hydrogen production and metagenomic study at an anaerobic packed-bed reactor treating a residual liquid stream of a Brazilian biorefinery. *Bioresour Technol* 186:81–88. <https://doi.org/10.1016/j.biortech.2015.03.035>.
 46. Ferraz Júnior ADN, Etchebehere C, Zaiat M. 2015. Mesophilic hydrogen production in acidogenic packed-bed reactors (APBR) using raw sugarcane vinasse as substrate: influence of support materials. *Anaerobe* 34:94–105. <https://doi.org/10.1016/j.anaerobe.2015.04.008>.
 47. Mohanrao MM, Singh DP, Kanika K, Goyal E, Singh AK. 2016. Deciphering the microbial diversity of Tattapani hot water spring using metagenomic approach. *Int J Agric Sci Res* 6:371–382.
 48. Andreote APD, Dini-Andreote F, Rigonato J, Machineski GS, Souza BCE, Barbiero L, Rezende-Filho AT, Fiore MF. 2018. Contrasting the genetic patterns of microbial communities in soda lakes with and without cyanobacterial bloom. *Front Microbiol* 9:244. <https://doi.org/10.3389/fmicb.2018.00244>.
 49. Pedron R, Esposito A, Bianconi I, Pasolli E, Tett A, Asnicar F, Cristofolini M, Segata N, Jousson O. 2019. Genomic and metagenomic insights into the microbial community of a thermal spring. *Microbiome* 7:8. <https://doi.org/10.1186/s40168-019-0625-6>.
 50. Matsushita M, Ishikawa S, Magara K, Sato Y, Kimura H. 2020. The potential for CH₄ production by syntrophic microbial communities in diverse deep aquifers associated with an accretionary prism and its overlying sedimentary layers. *Microbes Environ* 35:ME19103. <https://doi.org/10.1264/jmsme2.ME19103>.
 51. Madden T. 2002. The BLAST sequence analysis tool. *In* McEntyre J, Ostell J (ed), *The NCBI handbook*. National Center for Biotechnology Information, Bethesda, MD.
 52. Boill M, Einsle O, Ermler U, Kroneck PMH, Ullmann GM. 2016. Structure and function of the unusual tungsten enzymes acetylene hydratase and class II benzoyl-coenzyme A reductase. *J Mol Microbiol Biotechnol* 26:119–137. <https://doi.org/10.1159/000440805>.
 53. Kroneck PMH. 2016. Acetylene hydratase: a non-redox enzyme with tungsten and iron–sulfur centers at the active site. *J Biol Inorg Chem* 21:29–38. <https://doi.org/10.1007/s00775-015-1330-y>.
 54. Akob DM, Baesman SM, Sutton JM, Fierst JL, Mumford AC, Shrestha Y, Poret-Peterson AT, Bennett S, Dunlap DS, Haase KB, Oremland RS. 2017. Detection of diazotrophy in the acetylene-fermenting anaerobe *Pelobacter* sp. strain SFB93. *Appl Environ Microbiol* 83:e01198-17. <https://doi.org/10.1128/AEM.01198-17>.
 55. Maddocks SE, Oyston PCF. 2008. Structure and function of the LysR-type transcriptional regulator (LSTR) family proteins. *Microbiology (Reading)* 154:3609–3623. <https://doi.org/10.1099/mic.0.2008/022772-0>.
 56. Deochand DK, Grove A. 2017. MarR family transcription factors: dynamic variations on a common scaffold. *Crit Rev Biochem Mol Biol* 52:595–613. <https://doi.org/10.1080/10409238.2017.1344612>.
 57. Lacombe PJ. 2000. Hydrogeologic framework, water levels, and trichloroethylene contamination, Naval Air Warfare Center, West Trenton, New Jersey, 1993-97. Water resources investigations report 98-4167. US Geological Survey, Reston, VA.
 58. Goode DJ. 2007. Contamination in fractured-rock aquifers: research at the former Naval Air Warfare Center, West Trenton, New Jersey. Fact sheet 2007-3074. US Geological Survey, Reston, VA.
 59. Lacombe PJ, Burton WC. 2010. Hydrogeologic framework of fractured sedimentary rock, Newark Basin, New Jersey. *Ground Water Monit Remediat* 30:35–45. <https://doi.org/10.1111/j.1745-6592.2010.01275.x>.
 60. Révész K, Coplen TB, Baedeker MJ, Hult M. 1993. Use of carbon and hydrogen stable isotopes to investigate the production and fate of methane at a toxic waste site, Bemidji, Minnesota. *In* U.S. Geological Survey Toxic Substances Hydrology Program—Proceedings of the Technical Meeting, Colorado Springs, Colorado, September 20–24, 1993, water-resources investigations report 94-4015. US Geological Survey, Reston, VA.

61. Oremland RS, Blum JS, Culbertson CW, Visscher PT, Miller LG, Dowdle P, Strohmaier FE. 1994. Isolation, growth, and metabolism of an obligately anaerobic, selenate-respiring bacterium, strain SES-3. *Appl Environ Microbiol* 60:3011–3019. <https://doi.org/10.1128/AEM.60.8.3011-3019.1994>.
62. Wolin EA, Wolin MJ, Wolfe RS. 1963. Formation of methane by bacterial extracts. *J Biol Chem* 238:2882–2886.
63. Men Y, Lee PKH, Harding KC, Alvarez-Cohen L. 2013. Characterization of four TCE-dechlorinating microbial enrichments grown with different cobalamin stress and methanogenic conditions. *Appl Microbiol Biotechnol* 97:6439–6450. <https://doi.org/10.1007/s00253-013-4896-8>.
64. Holmes VF, He J, Lee PKH, Alvarez-Cohen L. 2006. Discrimination of multiple Dehalococcoides strains in a trichloroethene enrichment by quantification of their reductive dehalogenase genes. *Appl Environ Microbiol* 72:5877–5883. <https://doi.org/10.1128/AEM.00516-06>.
65. Pruesse E, Quast C, Knittel K, Fuchs BM, Ludwig W, Peplies J, Glöckner FO. 2007. SILVA: a comprehensive online resource for quality checked and aligned ribosomal RNA sequence data compatible with ARB. *Nucleic Acids Res* 35:7188–7196. <https://doi.org/10.1093/nar/gkm864>.
66. Schloss PD, Westcott SL, Ryabin T, Hall JR, Hartmann M, Hollister EB, Lesniewski RA, Oakley BB, Parks DH, Robinson CJ, Sahl JW, Stres B, Thallinger GG, Van Horn DJ, Weber CF. 2009. Introducing mothur: open-source, platform-independent, community-supported software for describing and comparing microbial communities. *Appl Environ Microbiol* 75:7537–7541. <https://doi.org/10.1128/AEM.01541-09>.
67. Quast C, Pruesse E, Yilmaz P, Gerken J, Schweer T, Yarza P, Peplies J, Glöckner FO. 2013. The SILVA ribosomal RNA gene database project: improved data processing and web-based tools. *Nucleic Acids Res* 41: D590–D596. <https://doi.org/10.1093/nar/gks1219>.
68. Yilmaz P, Parfrey LW, Yarza P, Gerken J, Pruesse E, Quast C, Schweer T, Peplies J, Ludwig W, Glöckner FO. 2014. The SILVA and 'All-species Living Tree Project (LTP)' taxonomic frameworks. *Nucleic Acids Res* 42: D643–D648. <https://doi.org/10.1093/nar/gkt1209>.
69. Joshi NA, Fass JN. 2011. Sickle: a sliding-window, adaptive, quality-based trimming tool for FastQ files (version 1.33). <https://github.com/najoshi/sickle>.
70. Peng Y, Leung HCM, Yiu SM, Chin FYL. 2012. IDBA-UD: a de novo assembler for single-cell and metagenomic sequencing data with highly uneven depth. *Bioinformatics* 28:1420–1428. <https://doi.org/10.1093/bioinformatics/bts174>.
71. Langmead B, Salzberg SL. 2012. Fast gapped-read alignment with Bowtie 2. *Nat Methods* 9:357–359. <https://doi.org/10.1038/nmeth.1923>.
72. Hyatt D, Chen G-L, Locascio PF, Land ML, Larimer FW, Hauser LJ. 2010. Prodigal: prokaryotic gene recognition and translation initiation site identification. *BMC Bioinformatics* 11:119. <https://doi.org/10.1186/1471-2105-11-119>.
73. Edgar RC. 2010. Search and clustering orders of magnitude faster than BLAST. *Bioinformatics* 26:2460–2461. <https://doi.org/10.1093/bioinformatics/btq461>.
74. Lowe TM, Eddy SR. 1997. tRNAscan-SE: a program for improved detection of transfer RNA genes in genomic sequence. *Nucleic Acids Res* 25:955–964. <https://doi.org/10.1093/nar/25.5.955>.
75. Brown CT, Hug LA, Thomas BC, Sharon I, Castelle CJ, Singh A, Wilkins MJ, Wrighton KC, Williams KH, Banfield JF. 2015. Unusual biology across a group comprising more than 15% of domain Bacteria. *Nature* 523:208–211. <https://doi.org/10.1038/nature14486>.
76. Kang DD, Froula J, Egan R, Wang Z. 2015. MetaBAT, an efficient tool for accurately reconstructing single genomes from complex microbial communities. *PeerJ* 3:e1165. <https://doi.org/10.7717/peerj.1165>.
77. Wu Y-W, Simmons BA, Singer SW. 2016. MaxBin 2.0: an automated binning algorithm to recover genomes from multiple metagenomic datasets. *Bioinformatics* 32:605–607. <https://doi.org/10.1093/bioinformatics/btv638>.
78. Sieber CMK, Probst AJ, Sharrar A, Thomas BC, Hess M, Tringe SG, Banfield JF. 2018. Recovery of genomes from metagenomes via a dereplication, aggregation and scoring strategy. *Nat Microbiol* 3:836–843. <https://doi.org/10.1038/s41564-018-0171-1>.
79. Parks DH, Imelfort M, Skennerton CT, Hugenholtz P, Tyson GW. 2015. CheckM: assessing the quality of microbial genomes recovered from isolates, single cells, and metagenomes. *Genome Res* 25:1043–1055. <https://doi.org/10.1101/gr.186072.114>.
80. Hug LA, Baker BJ, Anantharaman K, Brown CT, Probst AJ, Castelle CJ, Butterfield CN, Hermsdorf AW, Amano Y, Ise K, Suzuki Y, Dudek N, Relman DA, Finstad KM, Amundson R, Thomas BC, Banfield JF. 2016. A new view of the tree of life. *Nat Microbiol* 1:16048. <https://doi.org/10.1038/nmicrobiol.2016.48>.
81. Matsen FA, Kodner RB, Armbrust EV. 2010. pplacer: linear time maximum-likelihood and Bayesian phylogenetic placement of sequences onto a fixed reference tree. *BMC Bioinformatics* 11:538. <https://doi.org/10.1186/1471-2105-11-538>.
82. Letunic I, Bork P. 2016. Interactive tree of life (iTOL) v3: an online tool for the display and annotation of phylogenetic and other trees. *Nucleic Acids Res* 44:W242–W245. <https://doi.org/10.1093/nar/gkw290>.
83. Miller MA, Pfeiffer W, Schwartz T. 2010. Creating the CIPRES Science Gateway for inference of large phylogenetic trees, p 1–8. *In* 2010 Gateway Computing Environments Workshop (GCE), New Orleans, LA. <https://doi.org/10.1109/GCE.2010.5676129>.
84. Olm MR, Brown CT, Brooks B, Banfield JF. 2017. dRep: a tool for fast and accurate genomic comparisons that enables improved genome recovery from metagenomes through de-replication. *ISME J* 11:2864–2868. <https://doi.org/10.1038/ismej.2017.126>.
85. Castelle CJ, Hug LA, Wrighton KC, Thomas BC, Williams KH, Wu D, Tringe SG, Singer SW, Eisen JA, Banfield JF. 2013. Extraordinary phylogenetic diversity and metabolic versatility in aquifer sediment. *Nat Commun* 4:2120. <https://doi.org/10.1038/ncomms3120>.
86. Katoh K, Misawa K, Kuma K, Miyata T. 2002. MAFFT: a novel method for rapid multiple sequence alignment based on fast Fourier transform. *Nucleic Acids Res* 30:3059–3066. <https://doi.org/10.1093/nar/gkf436>.
87. Price MN, Dehal PS, Arkin AP. 2010. FastTree 2—approximately maximum-likelihood trees for large alignments. *PLoS One* 5:e9490. <https://doi.org/10.1371/journal.pone.0009490>.
88. Eddy SR. 2011. Accelerated profile HMM searches. *PLoS Comput Biol* 7: e1002195. <https://doi.org/10.1371/journal.pcbi.1002195>.
89. Baesman SM, Akob DM, Gushgari-Doyle S, Oremland R, Keren R, Banfield JF, Alvarez-Cohen L. 2020. Acetylene consumption and dechlorination by a groundwater microbial enrichment culture: U.S. Geological Survey data release. US Geological Survey, Reston, VA. <https://doi.org/10.5066/P9BF8LM4>.
90. Widdel F, Kohring G-W, Mayer F. 1983. Studies on dissimilatory sulfate-reducing bacteria that decompose fatty acids. III. Characterization of the filamentous gliding *Desulfonema limicola* gen. nov. sp. nov., and *Desulfonema magnum* sp. nov. *Arch Microbiol* 134:286–294. <https://doi.org/10.1007/BF00407804>.