

UC Irvine

UC Irvine Previously Published Works

Title

DIC score in pregnant women--a population based modification of the International Society on Thrombosis and Hemostasis score.

Permalink

<https://escholarship.org/uc/item/71225989>

Journal

PLoS One, 9(4)

Authors

Erez, Offer

Novack, Lena

Beer-Weisel, Ruthy

et al.

Publication Date

2014

DOI

10.1371/journal.pone.0093240

Peer reviewed



DIC Score in Pregnant Women – A Population Based Modification of the International Society on Thrombosis and Hemostasis Score

Offer Erez^{1*}, Lena Novack², Ruthy Beer-Weisel¹, Doron Dukler¹, Fernanda Press¹, Alexander Zlotnik³, Nandor Gabor Than⁴, Aaron Tomer⁵, Moshe Mazor¹

1 Department of Obstetrics and Gynecology, Soroka University Medical Center, School of Medicine, Faculty of Health Sciences, Ben Gurion University of the Negev, Beer Sheva, Israel, **2** Department of Epidemiology, School of Medicine, Faculty of Health Sciences, Ben Gurion University of the Negev, Beer Sheva, Israel, **3** Department of Anesthesiology and Intensive Care, Soroka University Medical Center, School of Medicine, Faculty of Health Sciences, Ben Gurion University of the Negev, Beer Sheva, Israel, **4** Department of Obstetrics and Gynecology, School of Medicine, Wayne State University, Detroit, Michigan, United States of America, **5** Blood Bank and Transfusion Medicine, Soroka University Medical Center, School of Medicine, Faculty of Health Sciences, Ben Gurion University of the Negev, Beer Sheva, Israel

Abstract

Objectives: The objectives of this study were: 1) To determine the component needed to generate a validated DIC score during pregnancy. 2) To validate such scoring system in the identification of patients with clinical diagnosis of DIC.

Material and Methods: This is a population based retrospective study, including all women who gave birth at the 'Soroka University Medical Center' during the study period, and have had blood coagulation tests including complete blood cell count, prothrombin time (PT)(seconds), partial thromboplastin time (aPTT), fibrinogen, and D-dimers. Nomograms for pregnancy were established, and DIC score was constructed based on ROC curve analyses.

Results: 1) maternal plasma fibrinogen concentrations increased during pregnancy; 2) maternal platelet count decreased gradually during gestation; 3) the PT and PTT values did not change with advancing gestation; 4) PT difference had an area under the curve (AUC) of 0.96 ($p < 0.001$), and a PT difference ≥ 1.55 had an 87% sensitivity and 90% specificity for the diagnosis of DIC; 5) the platelet count had an AUC of 0.87 ($p < 0.001$), an 86% sensitivity and 71% specificity for the diagnosis of DIC; 6) fibrinogen concentrations had an AUC of 0.95 ($p < 0.001$) and a cutoff point ≤ 3.9 g/L had a sensitivity of 87% and a specificity of 92% for the development of DIC; and 7) The pregnancy adjusted DIC score had an AUC of 0.975 ($p < 0.001$) and at a cutoff point of ≥ 26 had a sensitivity of 88%, a specificity of 96%, a LR(+) of 22 and a LR(-) of 0.125 for the diagnosis of DIC.

Conclusion: We could establish a sensitive and specific pregnancy adjusted DIC score. The positive likelihood ratio of this score suggests that a patient with a score of ≥ 26 has a high probability to have DIC.

Citation: Erez O, Novack L, Beer-Weisel R, Dukler D, Press F, et al. (2014) DIC Score in Pregnant Women – A Population Based Modification of the International Society on Thrombosis and Hemostasis Score. PLoS ONE 9(4): e93240. doi:10.1371/journal.pone.0093240

Editor: Hugo ten Cate, Maastricht University Medical Center, Netherlands

Received: October 17, 2013; **Accepted:** March 4, 2014; **Published:** April 11, 2014

Copyright: © 2014 Erez et al. This is an open-access article distributed under the terms of the Creative Commons Attribution License, which permits unrestricted use, distribution, and reproduction in any medium, provided the original author and source are credited.

Funding: The authors have no support or funding to report.

Competing Interests: The authors have declared that no competing interests exist.

* E-mail: erezof@bgu.ac.il

Introduction

The process of labor and delivery is associated with an increased risk for severe maternal hemorrhage [1]. Therefore, as an adaptive physiologic mechanism, pregnancy is associated with a physiologic prothrombotic state [2,3] resulting in increased thrombin generation locally and systemically. Sufficient local hemostasis is achieved by the abundance of tissue factor in the decidua [4,5], chorionic membranes and amniotic fluid [6–8]. In addition, systemic changes are observed in the maternal plasma including: 1) increased concentrations of clotting factors VII, VIII, IX, X and XII [3,9–13] and fibrinogen; 2) a reduction in the concentration of anticoagulant proteins such as protein S and tissue factor pathway inhibitor (TFPI)-1 [14–18]; 3) acquired resistance to activated protein C sensitivity [18–20]; and 4) reduced fibrinolysis as a result

of low activation of plasminogen activator inhibitor (PAI) I and II [13,21–25].

In spite of these physiologic changes in maternal hemostasis, uncontrolled peripartum bleeding, resulting in consumption coagulopathy and disseminated intravascular coagulation (DIC), is one of the leading causes for maternal mortality worldwide [26]. Although DIC results from a wide spread activation of both clotting and fibrinolysis systems leading to: 1) systemic production of fibrin split products, and thrombi that leads to end-organ ischemia; 2) increased vascular permeability due to activation of the kinin system; and 3) microangiopathic hemolysis, during pregnancy hemorrhage is the leading mechanisms for the development DIC. The most prevalent etiologies for such bleeding are post-partum hemorrhage, placental abruption, placenta previa, uterine rupture, cervical and vaginal lacerations, as well

as infection [27]. In modern obstetrics, the development of advanced pharmacological and surgical techniques to control bleeding, as well as the availability of advance transfusion services are the major factors that led to the substantial reduction in maternal mortality as a result of hemorrhage in developed countries. Nevertheless, severe peri-partum bleeding is still a leading cause for maternal morbidity and mortality even in these countries [26,27]. Currently, aside a clinical assessment, there are no effective tools to identify patients with acute bleeding at risk for DIC.

The International Society for Thrombosis and Hemostasis has adopted a score that assists in the diagnosis and the identification of patients at risk for the development of DIC [28]. This score is based on readily available coagulation assays including PT, PTT, fibrinogen and D-dimer or fibrin split products. In non-pregnant patients, there is a good correlation between an abnormal score result and the development of DIC [28]. However, in light of the physiologic changes of the coagulation cascade during gestation, this score could not be implemented in pregnant women. On the other hand, the morbidity and mortality associated with severe hemorrhage and consumption coagulopathy leading to DIC during pregnancy emphasizes the need for the adjustment of this ISTH DIC score to these patients. Therefore, the objectives of this study were: 1) to determine the component needed to generate a validated DIC score during pregnancy; and 2) to validate a new scoring system for the identification of patients with clinical DIC;

Materials and Methods

Study population

This is a population based retrospective study, including all women who gave birth at the 'Soroka University Medical Center' during the study period, and have had blood coagulation tests including complete blood cell count, prothrombin time (PT)(seconds), partial thromboplastin time (aPTT)(seconds), fibrinogen (g/L), and D-dimers (mg/L).

Exclusion criteria included: multiple gestation, chromosomal abnormalities or structural defects of the fetus. The use of the database was possible as the 'Soroka' University Medical Center is a tertiary medical center, which exclusively serves the population of the Negev, and all deliveries of the region takes place in its labor and delivery suites. The Department of Obstetrics and Gynecology has a computerized database of all the deliveries, the information is captured from the patients' medical records and coded according to the ICD-9 diagnosis into the database by trained secretaries. The information of all the laboratory results was incorporated into the patient's file in the computerized database.

There were 19,889 women who met the inclusion criteria and had 24,693 deliveries; 87 deliveries were complicated with DIC and comprised the study group; the rest (n = 24,606) comprised the comparison group. The diagnosis of DIC in the data base was according to ICD -9 code 776.2. The coding of DIC in the database was based upon the clinical diagnosis reported in the medical records. The clinical diagnosis of DIC at the Soroka University Medical Center in based upon severe maternal hemorrhage associated with prolonged PT as well as PTT, and low fibrinogen concentrations that required blood products transfusion.

The study was approved by the Soroka University Medical Center institutional review board

Outcome variables

In order to construct our DIC score, we performed several steps of analysis: 1) Calculating the 5th, 50th, and 95th percentiles of the platelet count ($\times 10^3/\mu\text{L}$), fibrinogen concentrations (g/L), prothrombin time (PT)(seconds), partial thromboplastin time (aPTT)(seconds), and D-dimer according to gestational age at sample collection. 2) Generating the cutoff values based on Receiver Operator Characteristic curves of each analyte with the chance to develop DIC including platelet count ($\times 10^9/\text{L}$), fibrinogen concentrations (g/L), and PT difference defined as the difference between the result of the patient and that of the laboratory normal control. 3) Constructing a multiple logistic regression model in which the cutoff values were derived from the ROC curves analysis and clinically relevant values were tested for their association with the development of DIC. 4) Building a DIC scoring system and comparing its diagnostic values to those of the existing International Society on Thrombosis and Hemostasis score.

Clinical definitions

Please see Supplementary information S1 in File S1.

Statistical analysis

Continuous variables were presented as mean \pm standard deviation (SD) and compared by t-test, ANOVA and Wilcoxon rank-sum test depending on their distribution. Categorical variables were presented as proportion out of available observations and compared between groups using Chi-square test and Fisher's exact test.

To build a DIC score, the contribution of each of the analytes tested was assessed using a log-binomial regression predicting the DIC diagnosis. We used robust estimates of standard errors in order to adjust for multiple deliveries of the same women. The model was built based on 75% of the study population that were used as the training sample and the remaining 25% were used for validation. The weight of each of the analytes in the resulting DIC score was determined based on the relative risk (RR) effect that was estimated by regression, whereas the analyte with the minimal impact was assigned as the reference value of "1" and weights of the rest of the factors represented their relative effect, i.e. RR of a factor divided by RR of a minimal factor.

Goodness-of-fit of the DIC score was assessed by the Area-Under-the Curve (AUC) of the Receiver Operator Curve (ROC) calculated on the training, and validated on the validation samples. As a part of a sensitivity analysis, the resultant DIC score was calculated within deliveries at risk (defined by preeclampsia, or post-partum hemorrhage or ante-partum death of a fetus) and within deliveries with abruption of placenta. P-value of less than 0.05 was considered significant. Analysis was done by SAS package (SAS Institute Inc, Cary, NC, USA).

Results

Study population

The rate of DIC in the study cohort was 0.35% (87/24,693) of all deliveries. Pregnancies complicated with DIC included older women, and those were more likely to be grand multiparous or to have infertility treatments (Table 1). The leading pregnancy complications associated with DIC were the following: placental abruption (49.4%), post-partum hemorrhage (29.9%), severe preeclampsia (12.6%), and uterine rupture (5.7%) (Table 1). The most prominent neonatal outcomes associated with DIC were lower mean birth weight, small for gestational age neonates,

Table 1. Maternal Characteristics - by DIC Diagnosis.

Maternal Characteristics	Comparison group N = 24,606 Deliveries	DIC group N = 87 Deliveries	P-value
Age, years (n)	29.6±6.2 (24579)	31.9±6.1 (87)	<.001
Jewish Origin	52.2% (12846/24606)	37.9% (33/87)	0.01
Gravidity			
1st Pregnancy	25.5% (6280/24601)	8.0% (7/87)	<0.001
2–5 Pregnancies	50.1% (12320/24601)	41.4% (36/87)	
6+ Pregnancies	24.4% (6001/24601)	50.6% (44/87)	
Parity			
1st Delivery	33.3% (7764/23325)	13.2% (10/76)	<0.001
2–5 Deliveries	53.0% (12372/23325)	60.5% (46/76)	
6+ Deliveries	13.7% (3189/23325)	26.3% (20/76)	
Infertility Treatments	7.7% (1888/24606)	13.8% (12/87)	0.04
Chronic Hypertension	5.7% (1402/24606)	0.0% (0/87)	0.01
GDM Class A	6.5% (1598/24606)	3.4% (3/87)	0.38
GDM Class B-R	2.4% (601/24606)	0.0% (0/87)	0.28
Severe Preeclampsia	5.3% (1312/24606)	12.6% (11/87)	0.01
Mild Preeclampsia	14.0% (3433/24606)	3.4% (3/87)	0.003
Abruption of Placenta	2.6% (641/24606)	49.4% (43/87)	<0.001
Uterine Rupture	0.2% (56/24606)	5.7% (5/87)	<0.001
Post-Partum Hemorrhage	2.6% (646/24606)	29.9% (26/87)	<0.001

GDM – gestational diabetes mellitus.
doi:10.1371/journal.pone.0093240.t001

Table 2. Neonatal Characteristics - by DIC Diagnosis.

Newborn Characteristics	No DIC Diagnosis N = 25,573 Newborns	DIC Diagnosis N = 91 Newborns	P-value
Birthweight, gr Mean±SD (N)	2953.3±748.4 (25564)	2376.3±972.6 (91)	<.001
Male gender	51.9% (13279/25573)	51.6% (47/91)	1.0
Small for Gestational Age	7.5% (1922/25573)	14.3% (13/91)	0.03
Large for Gestational Age	9.1% (2329/25573)	6.6% (6/91)	0.58
Weight			
<1,500gr	5.4% (1376/25564)	22.0% (20/91)	<0.001
1,500–2,500gr	16.0% (4096/25564)	26.4% (24/91)	
>2,500gr	78.6% (20092/25564)	51.6% (47/91)	
Gestational Age, wk			
<28	2.1% (532/25573)	12.1% (11/91)	<0.001
28–32	3.0% (773/25573)	13.2% (12/91)	
32–34	3.0% (774/25573)	2.2% (2/91)	
34–37	12.1% (3093/25573)	24.2% (22/91)	
37+	79.8% (20401/25573)	48.4% (44/91)	
APD	2.5% (629/25573)	30.8% (28/91)	<0.001
IPD	0.1% (35/25573)	3.3% (3/91)	<.001
PPD	1.4% (365/25573)	9.9% (9/91)	<.001
Total perinatal mortality	4.0% (1027/25573)	44.0% (40/91)	<.001

APD- ante-partum death; IPD – intra-partum death; PPD – post-partum death; wk- weeks; and gr- grams.
doi:10.1371/journal.pone.0093240.t002

preterm birth, and increased total perinatal mortality (DIC group: 44% vs. comparison group: 4%, $p < 0.001$) (Table 2).

Changes in the results of the diagnostic tests with advancing gestation

The PT difference decreased during pregnancy (Figure 1a), the maternal plasma platelet count decreased throughout gestation (Figure 1b), while the maternal plasma fibrinogen concentrations increased during pregnancy (Figure 1c). The mean and the percentiles of the PT difference, the platelets, and fibrinogen concentrations according to gestational age are presented in Tables S1–3 in File S1, respectively.

The association between maternal plasma concentrations and the PT difference with the development of DIC

We performed ROC Curves analysis to determine the diagnostic value of each analyte near the development of DIC. The PT difference had an area under the curve (AUC) of 0.96 ($p < 0.001$), whereas a PT difference above 1.55 yielded a sensitivity of 87% and specificity of 90% for the diagnosis of DIC (Figure 2a). The maternal plasma platelet count was significantly associated with the development of DIC and had an AUC of 0.87 ($p < 0.001$), with platelet count of $\leq 186 \times 10^3/\mu\text{L}$ provided with sensitivity of 86% and a specificity of 71% for the diagnosis of DIC (Figure 2b). The maternal plasma fibrinogen concentrations were significantly associated with the development of DIC, and had an AUC = 0.95 ($p < 0.001$) and a cutoff point ≤ 3.9 g/L characterized by a sensitivity of 87% and a specificity of 92% for the development of DIC (Figure 2c).

The log-binomial regression analysis for the association of the different analytes according to the cutoff generated from the ROC curves analysis for the development of DIC is presented in Table 3. A PT difference of beyond 1.5 presented the highest risk for the development of DIC [RR 60.3, 95% confidence interval (CI) 6.9–525.6], followed by fibrinogen below 3.0 g/L (RR 59.0 95% CI 20.7–168.7), and platelet count of $< 50 \times 10^3/\mu\text{L}$ had an adjusted RR of 3.1 95% CI (2.8–272.9). According to the results of the log-binomial regression we composed a score that is presented in Table 3 which takes into account the relative contribution of each analyte to the diagnosis of DIC. The resultant DIC score was 1 for half of the study population and 6.1 on average, with minimal and maximal values 0 and 52, respectively. The modified DIC score was then tested in its diagnostic value for DIC and the ROC analysis yielded an area under the curve of 0.98 ($p < 0.001$) and at a cutoff point of ≥ 26 had a sensitivity of 88% and a specificity of 96%, this indices are better than the results of the individual analytes (Figure 3). The cutoff point of the score = 26 was based on the maximal Youden statistic calculation. At a cutoff point of ≥ 26 the pregnancy adjusted DIC score had a positive likelihood ratio of 22 and a negative likelihood ratio of 0.125. Analysis of DIC in the validation samples (25% of the study population) yielded similar results with area under the curve equal 0.97.

Sensitivity Analysis

When we included in the model only patients with abruption, preeclampsia, and post-partum hemorrhage the area under the curve of the ROC analysis was 0.969 ($p < 0.001$) and a cutoff point of ≥ 26 had a sensitivity of 85.4% and a specificity of 96.8%, this indices are better than the results of the individual analytes (Figure 3). At a cutoff point of ≥ 26 the pregnancy adjusted DIC score had a positive likelihood ratio of 26.7 and a negative

likelihood ratio of 0.15. The area under the curve for patients diagnosed with abruption of placenta was 0.97 ($p < 0.001$) and the DIC score at or above 26 yielded sensitivity of 93% and specificity of 90.5%, with corresponding negative and positive likelihood ratios equal 9.79 and 0.08.

The comparisons of the performance of the obstetric DIC score with the current DIC scores available

In order to further validate our results, the performance of the DIC score we have developed were compared to that of a modified version of the DIC score adopted by the International Society of Thrombosis and Hemostasis (ISTH) (we have excluded the D-Dimer from the score). Due to the differences in patient selection and definition we could not compare our score to that proposed by Terao in 2007 [29].

Since abruption was the most prevalent cause for blood transfusion and DIC in our population, we used these patients for the comparison between the DIC scores. Out of 684 women with abruption, 150 (21.93%) needed blood transfusion and 43 (6.29%) had DIC. The first comparison was in the ability to identify patients with abruption who needed blood and blood product transfusion. Our DIC score at a cutoff point of 26 had an area under the curve of = 0.98; 95%CI: (0.96; 0.99), a sensitivity of 88% and a specificity of 96%. The modified ISTH score at a cutoff point of 0.5 had an AUC = 0.85; 95%CI: (0.78; 0.91), a sensitivity of 74%, and a specificity of 95%.

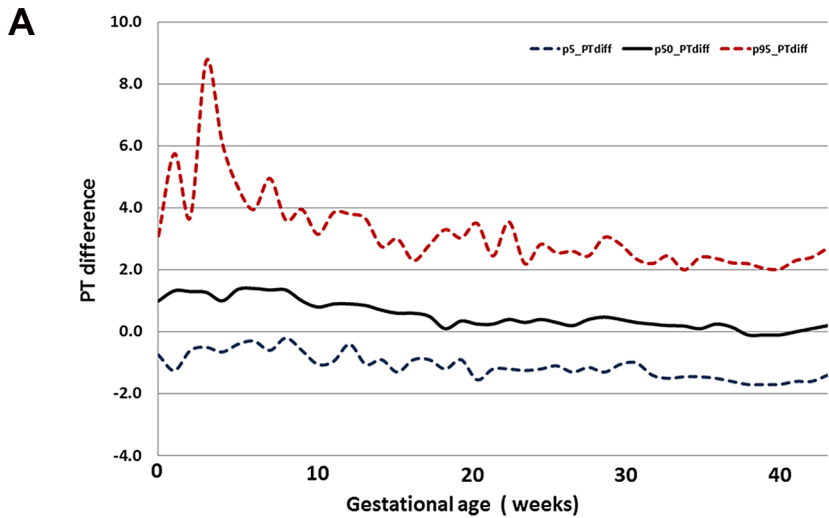
Discussion

Principal findings of the study

1) pregnancy is associated with significant changes in the major components of the ISTH overt DIC score; 2) by using only three components of this score, platelet count, fibrinogen concentrations and the PT difference, we were able to construct a pregnancy modified DIC score that had an area the curve of 0.975 ($p < 0.001$), and at a cutoff of ≥ 26 points had a sensitivity of 88% and a specificity of 96% for the diagnosis of DIC; and 3) at this cutoff the pregnancy modified DIC score had a positive likelihood ratio score of 22 and a negative likelihood ratio score of 0.125.

Why is a DIC score important?

DIC is a serious and life threatening complication that can result from several mechanisms, including acute and chronic consumptive coagulopathy, endothelial dysfunction and platelets activation, and acute liver dysfunction [28,30–41]. The most prominent obstetrical pathologies associated with the development of DIC are post-partum hemorrhage, placental abruption, HELLP syndrome, preeclampsia, retained dead fetus, acute fatty liver, and septic abortion [42–50]. The effect of these pathologies on the coagulation profile of the patients and the risk to develop DIC is not evident in all cases [42–50]. In addition, there is no single laboratory or clinical test that is sensitive and specific enough to diagnose DIC. In light of the above three DIC scores were previously developed [28,51,52]. All these scores use simple and readily available coagulation tests including platelet count, PT elongation, fibrinogen and fibrin split products/D-dimer concentrations [28,51,52]. The three DIC scores currently in use include the following: 1) the Japanese Ministry of Health and Welfare (JMHW) score that was proposed in 1983 [51]; 2) the ISTH overt DIC score that was published in 2001 [28]; and 3) the Japanese Association for Acute Medicine (JAAM) score that was published in 2005 [52]. All these three use the same components to generate their scores, which have good predictive value for the diagnosis of



PT difference defined as the difference between the result of the patient and that of the laboratory normal control.

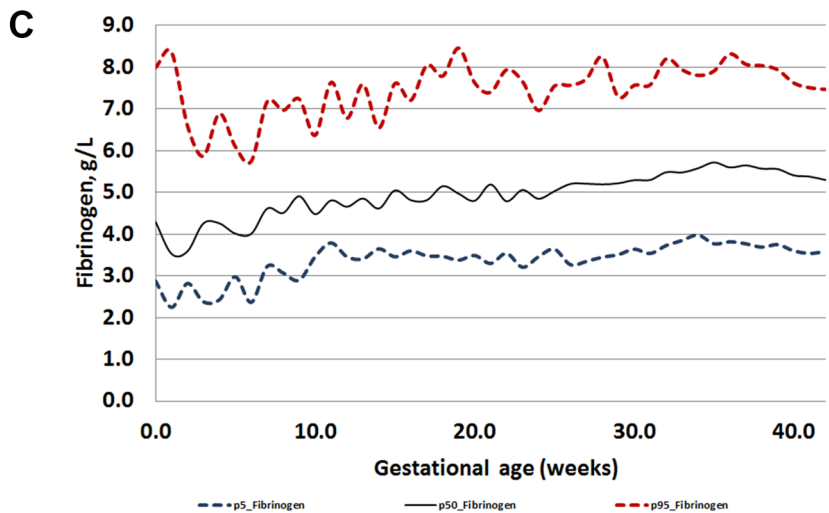
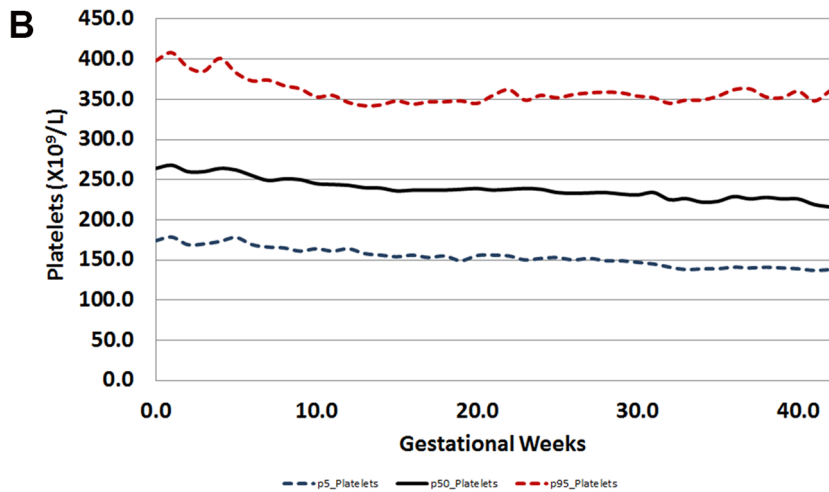


Figure 1. The changes in the major components of the pregnancy modified DIC score: a)- PT- difference; b)- platelets; and c)- fibrinogen, with advancing gestations.

doi:10.1371/journal.pone.0093240.g001

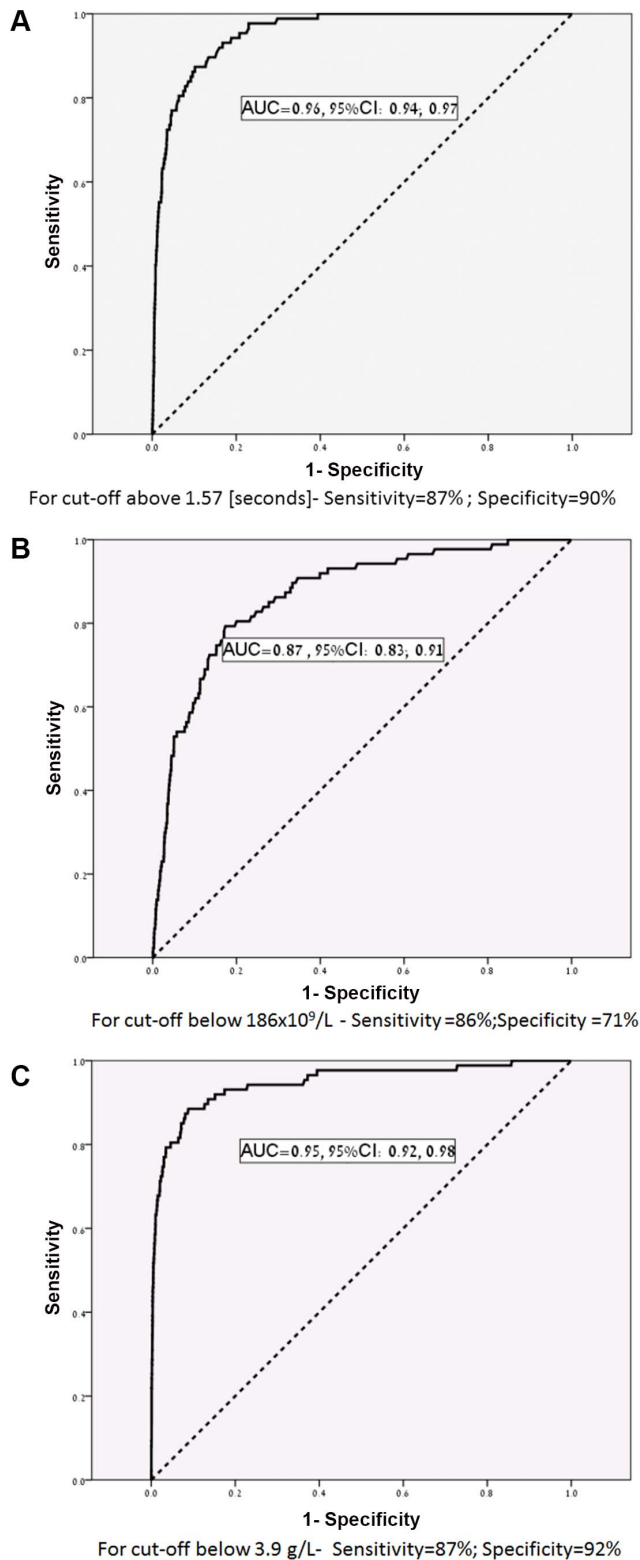


Figure 2. ROC curve analysis for the association of the major components of the pregnancy modified DIC score: a)- PT-difference; b)- platelets; and c)- fibrinogen, with the development of DIC.

doi:10.1371/journal.pone.0093240.g002

DIC and the identification of critically ill non-pregnant patients that are about to die. These scores can be used not only as a diagnostic but also as prognostic tool. Thus, in the non-pregnant state a DIC score is important in the diagnosis of patients with DIC and carries a diagnostic and prognostic value [53–58].

Terao et al [29] suggested in 1987 an obstetrical DIC score based on 77 patients with DIC identified in 100 centers in Japan, of which their score identified 70 (90%). The score included three main categories: 1) etiology- stating whether there is a prominent etiology that can explain the development of DIC; 2) clinical manifestation- including bleeding and organ dysfunction; and 3) laboratory tests- including PT, fibrinogen, FDP, and platelets; a minimum score of ≥ 7 needed for the diagnosis of DIC. However, this score was not validated in comparison to the normal obstetric population, and it is currently not in wide clinical use [29].

What are the changes in the components of the DIC score during pregnancy?

The ISTH overt DIC score is based on four components including platelet count, fibrinogen concentrations, PT difference (elongation of PT) and the concentrations of D-dimer or fibrin split products. Three of these parameters change during pregnancy [28]. Indeed, fibrinogen increases during gestation especially through the third trimester and declines only two days after delivery [59–64]. The underlying mechanisms leading to this change are not clear, is it a physiological change of pregnancy, or is it due to the fact that fibrinogen is an acute phase reactant, and its concentration reflect the changes in the maternal inflammatory status during gestation. An animal model suggests that the concentrations of fibrinogen are influenced by changes in estrogen concentrations which increase as labor approaches [65].

DIC is associated with a low platelet count, indeed thrombocytopenia is reported in up to 98% of patients with this condition [66,67]. Moreover, about 50% of patients with DIC will have a platelet count lower than $50 \times 10^9/L$ [66,67]. Pregnancy is a unique state in which the platelet count slightly decreases with advancing gestation [68–70], and about 7% of all pregnant women will suffer from thrombocytopenia [70]; moreover, it has been proposed that pregnancy is a compensated state of platelet consumption [69]. However, thrombocytopenia is a hallmark of severe pregnancy complications such as preeclampsia and hemolysis, elevated liver enzymes and low platelets (HELLP) syndrome [41,49,50,71–76]. The latter is a leading cause for DIC during pregnancy [47,49,50]; and the severity of HELLP syndrome was defined by some according to the degree of the thrombocytopenia [41,49,50,71–76], and women with HELLP syndrome who had a platelet count of $< 50 \times 10^9/L$ were at increased risk for DIC and liver hematoma/rupture [49,50,73,74]. Indeed, in the modified score presented herein, thrombocytopenia of $< 50 \times 10^9/L$ platelets is a strong identifier of DIC in pregnant women.

The PT difference (the difference between the result of the patient and that of the laboratory normal control) is a crude marker for DIC [28]. Prolongation of PT suggests that the concentration of the coagulation factors is below 50%. Indeed, Chakraverty et al [77] reported that among 235 patients admitted to an adult intensive care unit, clinical coagulopathy, defined as bleeding unexplained by local or surgical factors, was identified in 13.6% of patients; moreover, a prothrombin time (PT) difference $> \text{ or } = 1.5$ was found in 66% of patients and a platelet count $< 100 \times 10^9/L$ in 38% of patients. Both factors were predictive of excessive bleeding and poor outcome [77]. Although during normal pregnancy the values of PT do not change substantially, the PT difference gives fast information regarding the status of the

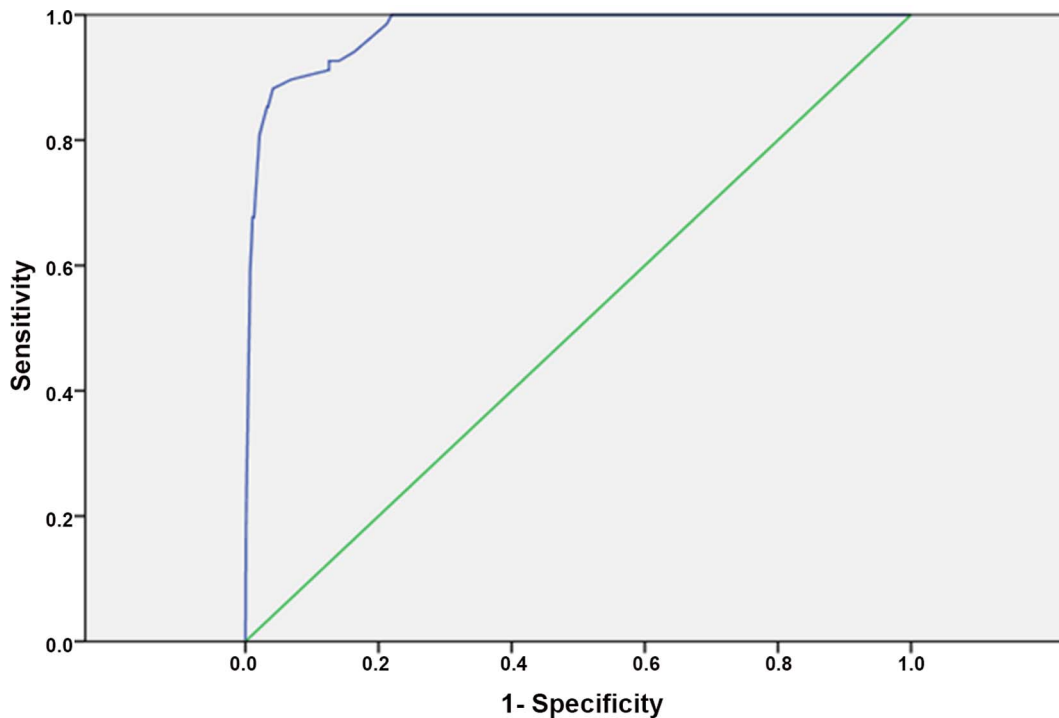


Figure 3. ROC curve analysis for the association of the modified DIC score with the development of DIC.
doi:10.1371/journal.pone.0093240.g003

clotting factors. Indeed, in our modified score, a PT difference of >1.5 was associated with an adjusted relative risk of 558.1 95%CI 75.6–4120.8 to have DIC, and its assigned weight in the pregnancy modified DIC score was 25 points, while 26 points is the diagnostic cutoff for DIC.

The fourth component of the ISTH overt DIC score is the concentrations of D-dimer or fibrin split products [28]. These parameters are also increased in thromboembolic diseases, recent surgery, and inflammatory condition; thus, they can poorly differentiate these patients from those with DIC [78]. Moreover, Hatada et al [79] studied the cutoff values of fibrin related markers

Table 3. An effect of components of the new DIC score – results of logistic regression.

	Effect of individual analytes		Effect of individual analytes adjusted to other tests		Assigned Weight ¹
	Relative Risk	p-value	Relative Risk	p-value	
PT difference (seconds)					
<0.5	1.0		1.0		0
0.5–1	12.7	0.031	29.3	<0.001	5
1.0–1.5	27.7	0.005	68.8	<0.001	12
>1.5	60.3	<0.001	558.1	<0.001	25
Platelets ($10^9/L$)					
<50	3.1	0.06	89.2	<0.001	1
50–100	5.2	<0.001	56.2	<0.001	2
100–185	2.9	0.001	12.8	<0.001	1
>185	1.0		1.0		0
Fibrinogen (g/L)					
<3.0	59.0	<0.001	662.9	<0.001	25
3.0–4.0	13.4	<0.001	59.1	<0.001	6
4.0–4.5	2.4	0.320	6.8	0.03	1
>4.5	1.00		1.0		0

¹Weight was calculated as relative risk of each of the adjusted factors to the relative risk of a factor with minimal effect.
doi:10.1371/journal.pone.0093240.t003

in the diagnosis of overt DIC. The authors reported that the use of fibrin related markers including D-dimer were useful in the diagnosis and prognosis of DIC resulting from infection [79]; however, it was less useful in the diagnosis of DIC resulting from solid or hematologic tumors [79]. During pregnancy, the concentrations of D-dimer or fibrin split products changes extensively, and it has been proposed that they have no diagnostic value during gestation [25,63,64]. Indeed, D-dimer concentration of 0.5 mg/L is considered as the upper limit of the normal value in non-pregnant patients [80–82]. However, during pregnancy, D-dimer level increases substantially after 20 weeks of gestation [63]; and during the third trimester practically all patients have a concentration >0.5 mg/L [25,63,64]. Therefore, the diagnostic value of this parameter is very low during pregnancy, and we, at the Soroka University Medical, hardly use the concentrations of D-dimer or fibrin split products in the clinical management of our pregnant patients. In light of the changes in the maternal concentrations of D-dimer during pregnancy, the lack of its clinical utility during gestation, and the small number of D-dimer tests performed at our medical center, this marker was not included in our score.

What are differences between the modified DIC score and the ISTH overt DIC score?

We present here for the first time a DIC score that is specific to pregnancy. Our pregnancy modified DIC score has a high sensitivity and specificity to identify patients with DIC in the general obstetric population. The positive Likelihood Ratio score above 10 suggest a high probability that a positive test in our score will be really diagnostic for DIC. This is also correct for the negative Likelihood Ratio score suggesting that a negative result is true and the probability that such patient has DIC is very low.

The ISTH overt DIC score has proven to be both sensitive and specific for the diagnosis of DIC in non-pregnant patients [28]. Moreover, it was also associated with a good survival prediction of non-pregnant patients hospitalized in intensive care units [52,83,84]. Nevertheless, the reference values for the calculation of the ISTH score do not take into account the physiological changes that occur in these parameters during pregnancy. Indeed, when we used a modified version of this score according to data we have available (i.e. excluding D-dimer) the ISTH DIC score did not performed as well as it does in non-pregnant patients.

References

- Hahn L (1974) On fibrinolysis and coagulation during parturition and menstruation. *Acta Obstet Gynecol Scand Suppl* 28: 7–40.
- Brenner B, Aharon A, Lanir N (2005) Hemostasis in normal pregnancy. *Thromb Res* 115 Suppl 1: 6–10.
- Brenner B (2004) Haemostatic changes in pregnancy. *Thromb Res* 114: 409–14.
- Lockwood CJ, Krikun G, Schatz F (1999) The decidua regulates hemostasis in human endometrium. *Semin Reprod Endocrinol* 17: 45–51.
- Lockwood CJ, Krikun G, Schatz F (2001) Decidual cell-expressed tissue factor maintains hemostasis in human endometrium. *Ann N Y Acad Sci* 943: 77–88.
- Erez O, Gotsch F, Mazaki-Tovi S, Vaisbuch E, Kusanovic JP, et al. (2009) Evidence of maternal platelet activation, excessive thrombin generation, and high amniotic fluid tissue factor immunoreactivity and functional activity in patients with fetal death. *J Matern Fetal Neonatal Med* 22: 672–87.
- Lockwood CJ, Bach R, Guha A, Zhou XD, Miller WA, et al. (1991) Amniotic fluid contains tissue factor, a potent initiator of coagulation. *Am J Obstet Gynecol* 165: 1335–41.
- Uszynski M, Zekanowska E, Uszynski W, Kuczynski J (2001) Tissue factor (TF) and tissue factor pathway inhibitor (TFPI) in amniotic fluid and blood plasma: implications for the mechanism of amniotic fluid embolism. *Eur J Obstet Gynecol Reprod Biol* 95: 163–66.
- Stirling Y, Woolf L, North WR, Seghatchian MJ, Meade TW (1984) Haemostasis in normal pregnancy. *Thromb Haemostasis* 52: 176–82.
- Beller FK, Ebert C (1982) The coagulation and fibrinolytic enzyme system in pregnancy and in the puerperium. *Eur J Obstet Gynecol Reprod Biol* 13: 177–97.
- Donohoe S, Quenby S, Mackie I, Panal G, Farquharson R, et al. (2002) Fluctuations in levels of antiphospholipid antibodies and increased coagulation activation markers in normal and heparin-treated antiphospholipid syndrome pregnancies. *Lupus* 11: 11–20.
- Bremme KA (2003) Haemostatic changes in pregnancy. *Best Pract Res Clin Haematol* 16: 153–68.
- Hellgren M, Blomback M (1981) Studies on blood coagulation and fibrinolysis in pregnancy, during delivery and in the puerperium. I. Normal condition. *Gynecol Obstet Invest* 12: 141–54.
- Clark P, Brennand J, Conkie JA, McCall F, Greer IA, et al. (1998) Activated protein C sensitivity, protein C, protein S and coagulation in normal pregnancy. *Thromb Haemost* 79: 1166–70.
- Faught W, Garner P, Jones G, Ivey B (1995) Changes in protein C and protein S levels in normal pregnancy. *Am J Obstet Gynecol* 172: 147–50.
- Oruc S, Saruc M, Koyuncu FM, Ozdemir E (2000) Changes in the plasma activities of protein C and protein S during pregnancy. *Aust N Z J Obstet Gynaecol* 40: 448–50.
- Lefkowitz JB, Clarke SH, Barbour LA (1996) Comparison of protein S functional and antigenic assays in normal pregnancy. *Am J Obstet Gynecol* 175: 657–60.
- Mahieu B, Jacobs N, Mahieu S, Naclaerts K, Vertessen F, et al. (2007) Haemostatic changes and acquired activated protein C resistance in normal pregnancy. *Blood Coagul Fibrinolysis* 18: 685–88.

We agree with the approach presented by Terao and his colleagues [29] regarding the need for a predisposing event that puts the mother at risk for DIC as an essential condition for calculating the DIC score. However, we could not compare our results to their findings due to the large diversity in the definition of risk factors and score calculation.

Of note, our score is based on a retrospective study and analysis of an already established clinical database. In order to validate this score a large prospective clinical trial is needed. Moreover, this score will not be complete without the implementation of bedside point of care assays like thromboelstgram that can give an indication of the type of coagulopathy and the needed blood products to amend it.

Strengths and weakness of our study

The major weakness of our study is its retrospective nature that carries the inherited limitation of working with an established dataset. Nevertheless, this is the largest cohort of pregnant patients with DIC published so far with a large reference population of women without DIC who had normal and complicated pregnancies.

Conclusions

We present herein a novel DIC score for pregnant women. This score is sensitive as well as specific, and can serve clinicians worldwide. This pregnancy modified DIC score can be used to identify women who develop DIC even in Labor and Delivery departments that lack advance laboratories facilities.

Supporting Information

File S1 Table S1, PT difference percentiles according to gestational age. Table S2, Platelets concentration ($10^9/L$) percentiles according to gestational age. Table S3, Fibrinogen concentration percentiles according to gestational age. Supplementary information S1, clinical definitions. (DOCX)

Author Contributions

Conceived and designed the experiments: OE LN MM. Analyzed the data: OE LN NGT AT. Wrote the paper: OE LN NGT AT FP RBW DD MM AZ.

19. Mimuro S, Lahoud R, Beutler L, Trudinger B (1998) Changes of resistance to activated protein C in the course of pregnancy and prevalence of factor V mutation. *Aust N Z J Obstet Gynaecol* 38: 200–04.
20. Cumming AM, Tait RC, Fildes S, Yoong A, Keeney S, et al. (1995) Development of resistance to activated protein C during pregnancy. *Br J Haematol* 90: 725–27.
21. BIEZENSKI JJ, MOORE HC (1958) Fibrinolysis in normal pregnancy. *J Clin Pathol* 11: 306–10.
22. NAIDOO SS, HATHORN M, GILLMAN T (1960) Fibrinolytic and antifibrinolytic activity in pregnancy. *J Clin Pathol* 13: 224–5.
23. Thorsen S (1973) The inhibition of tissue plasminogen activator and urokinase-induced fibrinolysis by some natural proteinase inhibitors and by plasma and serum from normal and pregnant subjects. *Scand J Clin Lab Invest* 31: 51–59.
24. Arias F, Andrinopoulos G, Zamora J (1979) Whole-blood fibrinolytic activity in normal and hypertensive pregnancies and its relation to the placental concentration of urokinase inhibitor. *Am J Obstet Gynecol* 133: 624–29.
25. Kline JA, Williams GW, Hernandez-Nino J (2005) D-dimer concentrations in normal pregnancy: new diagnostic thresholds are needed. *Clin Chem* 51: 825–29.
26. Berg CJ, Callaghan WM, Syverson C, Henderson Z (2010) Pregnancy-related mortality in the United States, 1998 to 2005. *Obstet Gynecol* 116: 1302–09.
27. Wallfish M, Neuman A, Wlody D (2009) Maternal haemorrhage. *Br J Anaesth* 103 Suppl 1:i47–56.
28. Taylor FB Jr, Toh CH, Hoots WK, Wada H, Levi M (2001) Towards definition, clinical and laboratory criteria, and a scoring system for disseminated intravascular coagulation. *Thromb Haemost* 86: 1327–30.
29. Terao T, Maki M, Ikenoue T (1987) A prospective study in 38 patients with abruptio placentae of 70 cases complicated by DIC. *Asia Oceania J Obstet Gynaecol* 13: 1–13.
30. Levi M (2009) Disseminated intravascular coagulation in cancer patients. *Best Pract Res Clin Haematol* 22: 129–36.
31. Levi M (2007) Disseminated intravascular coagulation. *Crit Care Med* 35: 2191–95.
32. Levi M (2005) Pathogenesis and treatment of DIC. *Thromb Res* 115 Suppl 1: 54–5.
33. Levi M, de Jonge E, van der Poll T (2003) Sepsis and disseminated intravascular coagulation. *J Thromb Thrombolysis* 16: 43–47.
34. Levi M (2001) Pathogenesis and treatment of disseminated intravascular coagulation in the septic patient. *J Crit Care* 16: 167–77.
35. Cauchie P, Cauchie C, Boudjeltia KZ, Carlier E, Deschepper N, et al. (2006) Diagnosis and prognosis of overt disseminated intravascular coagulation in a general hospital – meaning of the ISTH score system, fibrin monomers, and lipoprotein-C-reactive protein complex formation. *Am J Hematol* 81: 1414–19.
36. Fourrier F, Chopin C, Goudemand J, Hendrycx S, Caron C, et al. (1992) Septic shock, multiple organ failure, and disseminated intravascular coagulation. Compared patterns of antithrombin III, protein C, and protein S deficiencies. *Chest* 101: 816–23.
37. Gando S, Kameue T, Nanzaki S, Nakanishi Y (1996) Disseminated intravascular coagulation is a frequent complication of systemic inflammatory response syndrome. *Thromb Haemost* 75: 224–28.
38. Gando S, Kameue T, Matsuda N, Sawamura A, Hayakawa M, et al. (2004) Systemic inflammation and disseminated intravascular coagulation in early stage of ALI and ARDS: role of neutrophil and endothelial activation. *Inflammation* 28: 237–44.
39. Gando S, Saitoh D, Ogura H, Mayumi T, Koseki K, et al. (2008) Natural history of disseminated intravascular coagulation diagnosed based on the newly established diagnostic criteria for critically ill patients: results of a multicenter, prospective survey. *Crit Care Med* 36: 145–50.
40. Levi M, van der Poll T (2013) Disseminated intravascular coagulation: a review for the internist. *Intern Emerg Med* 8: 23–32.
41. Levi M, ten Cate H, van der Poll T, van Deventer SJ (1993) Pathogenesis of disseminated intravascular coagulation in sepsis. *JAMA* 270: 975–79.
42. Levi M (2009) Disseminated intravascular coagulation (DIC) in pregnancy and the peri-partum period. *Thromb Res* 123 Suppl 2:S63–4.
43. Thachil J, Toh CH (2009) Disseminated intravascular coagulation in obstetric disorders and its acute haematological management. *Blood Rev* 23: 167–76.
44. Romero R, Kadar N, Vaisbuch E, Hassan SS (2010) Maternal death following cardiopulmonary collapse after delivery: amniotic fluid embolism or septic shock due to intrauterine infection? *Am J Reprod Immunol* 64: 113–25.
45. Rattray DD, O'Connell CM, Baskett TF (2012) Acute disseminated intravascular coagulation in obstetrics: a tertiary centre population review (1980 to 2009). *J Obstet Gynaecol Can* 34: 341–47.
46. Montagnana M, Franchi M, Danese E, Gotsch F, et al. (2010) Disseminated intravascular coagulation in obstetric and gynecologic disorders. *Semin Thromb Hemost* 36: 404–18.
47. Lurie S, Feinstein M, Mamet Y (2000) Disseminated intravascular coagulopathy in pregnancy: thorough comprehension of etiology and management reduces obstetricians' stress. *Arch Gynecol Obstet* 263: 126–30.
48. Liao WC, Jaw FS (2011) A noninvasive evaluation analysis of amniotic fluid embolism and disseminated intravascular coagulopathy. *J Matern Fetal Neonatal Med* 24: 1411–15.
49. Levi M (2013) Pathogenesis and management of peripartum coagulopathic calamities (disseminated intravascular coagulation and amniotic fluid embolism). *Thromb Res* 131 Suppl 1:S32–4.
50. Gasem T, Al Jama FE, Burshaid S, Rahman J, Al Sulciman SA, et al. (2009) Maternal and fetal outcome of pregnancy complicated by HELLP syndrome. *J Matern Fetal Neonatal Med* 22: 1140–43.
51. Kobayashi N, Maekawa T, Takada M, Tanaka H, Gonmori H (1983) Criteria for diagnosis of DIC based on the analysis of clinical and laboratory findings in 345 DIC patients collected by the Research Committee on DIC in Japan. *Bibl Haematol* 265–75.
52. Gando S, Iba T, Eguchi Y, Ohtomo Y, Okamoto K, et al. (2006) A multicenter, prospective validation of disseminated intravascular coagulation diagnostic criteria for critically ill patients: comparing current criteria. *Crit Care Med* 34: 625–31.
53. Angstwurm MW, Dempfle CE, Spannagl M (2006) New disseminated intravascular coagulation score: A useful tool to predict mortality in comparison with Acute Physiology and Chronic Health Evaluation II and Logistic Organ Dysfunction scores. *Crit Care Med* 34: 314–20.
54. Asakura H, Wada H, Okamoto K, Iba T, Uchiyama T, et al. (2006) Evaluation of haemostatic molecular markers for diagnosis of disseminated intravascular coagulation in patients with infections. *Thromb Haemost* 95: 282–87.
55. Bakhtiari K, Meijers JC, de Jonge E, Levi M (2004) Prospective validation of the International Society of Thrombosis and Haemostasis scoring system for disseminated intravascular coagulation. *Crit Care Med* 32: 2416–21.
56. Cavkaytar S, Ugurlu EN, Karaer A, Tapisiz OL, Danisman N (2007) Are clinical symptoms more predictive than laboratory parameters for adverse maternal outcome in HELLP syndrome? *Acta Obstet Gynecol Scand* 86: 648–51.
57. Sundberg E, Hultdin J, Nilsson S, Ahlm C (2006) Evidence of disseminated intravascular coagulation in a hemorrhagic fever with renal syndrome-scoring models and severe illness. *PLoS One* 6:e21134.
58. Park KS, Choi KH, Kim YS, Hong BS, Kim OY, et al. (2010) Outer membrane vesicles derived from *Escherichia coli* induce systemic inflammatory response syndrome. *PLoS One* 2010 5:e11334.
59. Ganrot PO. (1972) Variation of the concentrations of some plasma proteins in normal adults, in pregnant women and in newborns. *Scand J Clin Lab Invest Suppl* 124: 83–8.
60. van Buul EJ, Steegers EA, Jongsma HW, Eskes TK, Thomas CM, et al. (1995) Haematological and biochemical profile of uncomplicated pregnancy in nulliparous women; a longitudinal study. *Neth J Med* 46: 73–85.
61. Hansen AT, Andreasen BH, Salvig JD, Hvas AM (2011) Changes in fibrin D-dimer, fibrinogen, and protein S during pregnancy. *Scand J Clin Lab Invest* 71: 173–76.
62. Cerneca F, Ricci G, Simeone R, Malisano M, Alberico S, et al. (1997) Coagulation and fibrinolysis changes in normal pregnancy. Increased levels of procoagulants and reduced levels of inhibitors during pregnancy induce a hypercoagulable state, combined with a reactive fibrinolysis. *Eur J Obstet Gynecol Reprod Biol* 73: 31–36.
63. Szecs PB, Jorgensen M, Klajnbard A, Andersen MR, Colov NP, et al. (2010) Haemostatic reference intervals in pregnancy. *Thromb Haemost* 103: 718–27.
64. Francalanci I, Comeglio P, Liotta AA, Cellai AP, Fedi S, et al. (1995) D-dimer concentrations during normal pregnancy, as measured by ELISA. *Thromb Res* 78: 399–405.
65. Muller-Berghaus G, Moeller RM, Mahn I (1978) Fibrinogen turnover in pregnant rabbits during the first and last thirds of gestation. *Am J Obstet Gynecol* 131: 655–60.
66. Spero JA, Lewis JH, Hasiba U (1980) Disseminated intravascular coagulation. Findings in 346 patients. *Thromb Haemost* 43: 28–33.
67. Levi M, Toh CH, Thachil J, Watson HG (2009) Guidelines for the diagnosis and management of disseminated intravascular coagulation. British Committee for Standards in Haematology. *Br J Haematol* 145: 24–33.
68. Hellgren M (2003) Hemostasis during normal pregnancy and puerperium. *Semin Thromb Hemost* 29: 125–30.
69. Tygart SG, McRoyan DK, Spinnato JA, McRoyan CJ, Kitay DZ (1986) Longitudinal study of platelet indices during normal pregnancy. *Am J Obstet Gynecol* 154: 883–87.
70. Erez O, Wiznitzer A, Mazor M (2000) Thrombocytopenia in pregnancy. *Harefuah* 139: 292–98.
71. Sibai BM, Ramadan MK, Usta I, Salama M, Mercer BM, et al. (1993) Maternal morbidity and mortality in 442 pregnancies with hemolysis, elevated liver enzymes, and low platelets (HELLP syndrome). *Am J Obstet Gynecol* 169: 1000–06.
72. Martin JN Jr, Rinehart BK, May WL, Magann EF, Terrone DA, et al. (1999) The spectrum of severe preeclampsia: comparative analysis by HELLP (hemolysis, elevated liver enzyme levels, and low platelet count) syndrome classification. *Am J Obstet Gynecol* 180: 1373–84.
73. Martin JN Jr, Brewer JM, Wallace K, Sunesara I, Canizaro A, et al. (2013) HELLP syndrome and composite major maternal morbidity: importance of Mississippi classification system. *J Matern Fetal Neonatal Med* 26: 1201–06.
74. Martin JN Jr (2013) Milestones in the quest for best management of patients with HELLP syndrome (microangiopathic hemolytic anemia, hepatic dysfunction, thrombocytopenia). *Int J Gynecol Obstet* 121: 202–07.
75. Isler CM, Rinehart BK, Terrone DA, Martin RW, Magann EF, et al. (1999) Maternal mortality associated with HELLP (hemolysis, elevated liver enzymes, and low platelets) syndrome. *Am J Obstet Gynecol* 181: 924–28.
76. Haddad B, Barton JR, Livingston JC, Chahine R, Sibai BM (2000) Risk factors for adverse maternal outcomes among women with HELLP (hemolysis, elevated

- liver enzymes, and low platelet count) syndrome. *Am J Obstet Gynecol* 183: 444–48.
77. Chakraverty R, Davidson S, Peggs K, Stross P, Garrard C, et al. (1996) The incidence and cause of coagulopathies in an intensive care population. *Br J Haematol* 93: 460–63.
 78. Levi M, Meijers JC (2011) DIC: which laboratory tests are most useful. *Blood Rev* 25: 33–37.
 79. Hatada T, Wada H, Kawasugi K, Okamoto K, Uchiyama T, et al. (2012) Analysis of the cutoff values in fibrin-related markers for the diagnosis of overt DIC. *Clin Appl Thromb Hemost* 18: 495–500.
 80. Brown MD, Rowe BH, Reeves MJ, Bermingham JM, Goldhaber SZ (2002) The accuracy of the enzyme-linked immunosorbent assay D-dimer test in the diagnosis of pulmonary embolism: a meta-analysis. *Ann Emerg Med* 40: 133–44.
 81. Stein PD, Hull RD, Patel KC, Olson RE, Ghali WA, et al. (2004) D-dimer for the exclusion of acute venous thrombosis and pulmonary embolism: a systematic review. *Ann Intern Med* 140: 589–602.
 82. British Thoracic Society guidelines for the management of suspected acute pulmonary embolism (2003) *Thorax* 58: 470–83.
 83. Voves C, Wuillemin WA, Zeerleder S (2006) International Society on Thrombosis and Haemostasis score for overt disseminated intravascular coagulation predicts organ dysfunction and fatality in sepsis patients. *Blood Coagul Fibrinolysis* 17: 445–51.
 84. Rizoli S, Nascimento B Jr, Key N, Tien HC, Muraca S, et al. (2011) Disseminated intravascular coagulopathy in the first 24 hours after trauma: the association between ISTH score and anatomopathologic evidence. *J Trauma* 71: S441–S447.