

UNIVERSITY OF
CALIFORNIA

Ernest O. Lawrence

*Radiation
Laboratory*

TWO-WEEK LOAN COPY

*This is a Library Circulating Copy
which may be borrowed for two weeks.
For a personal retention copy, call
Tech. Info. Division, Ext. 5545*

BERKELEY, CALIFORNIA

DISCLAIMER

This document was prepared as an account of work sponsored by the United States Government. While this document is believed to contain correct information, neither the United States Government nor any agency thereof, nor the Regents of the University of California, nor any of their employees, makes any warranty, express or implied, or assumes any legal responsibility for the accuracy, completeness, or usefulness of any information, apparatus, product, or process disclosed, or represents that its use would not infringe privately owned rights. Reference herein to any specific commercial product, process, or service by its trade name, trademark, manufacturer, or otherwise, does not necessarily constitute or imply its endorsement, recommendation, or favoring by the United States Government or any agency thereof, or the Regents of the University of California. The views and opinions of authors expressed herein do not necessarily state or reflect those of the United States Government or any agency thereof or the Regents of the University of California.

non in form
~~R. Baber~~
Aug 4
Δc. 2

UNITED STATES ATOMIC ENERGY COMMISSION

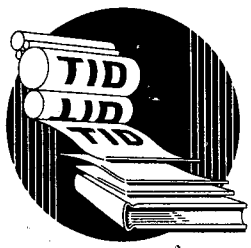
UCRL-814

THE γ -RAY SPECTRUM RESULTING FROM CAPTURE
OF NEGATIVE π MESONS IN HYDROGEN

By
Wolfgang K. H. Panofsky
Lee Aamodt
James Hadley
Robert Phillips

July 1950

University of California
Radiation Laboratory



Technical Information Division, ORE, Oak Ridge, Tennessee

THE γ -RAY SPECTRUM RESULTING FROM CAPTURE OF NEGATIVE π MESONS IN HYDROGEN

By Wolfgang K. H. Panofsky, Lee Aamodt, James Hadley, and Robert Phillips

Preliminary results concerning the γ -ray spectrum resulting from the capture of π^- mesons in hydrogen have been reported in a previous letter.* The purpose of this note is to present more conclusive data and to indicate the resultant mass values for the neutral meson. A more detailed report is in preparation.

The apparatus and geometrical arrangement used is similar to the instrumentation previously reported.* The principal improvement is the use of a 32-channel pair spectrometer (Fig. 1). Two sets of spectra are shown: one (Fig. 2) taken with the center of the spectrometer set at 100 Mev and one (Fig. 3) with the center set at 70 Mev. Figure 2 clearly shows that both processes discussed previously coexist, namely:

$$\pi^- + p \rightarrow n + \gamma \quad (1)$$

$$\pi^- + p \rightarrow n + \pi^0 \quad (2)$$

└ 2γ

Figure 3 permits a fairly accurate determination of the π^0 mass. We obtain from Fig. 3 and the kinematics pertaining to Eq. 2:

$$M_{\pi^-} - M_{\pi^0} = 10.6 \pm 2.0 \text{ electron masses.}$$

Figure 2 permits an estimate of the branching ratio between processes (1) and (2). The result is

$$\frac{\Gamma_{\pi^0}}{\Gamma_{\gamma}} = 0.96 \pm 0.20$$

and the available momentum space for the π^0 is $p/M_{\pi^0}c = 0.23 \pm 0.03$.

The authors are greatly indebted to Dr. Herbert F. York for cooperation during the early parts of the experiment.

*W. K. H. Panofsky, Lee Aamodt, and H. F. York, Phys. Rev., 78: 825 (1950).

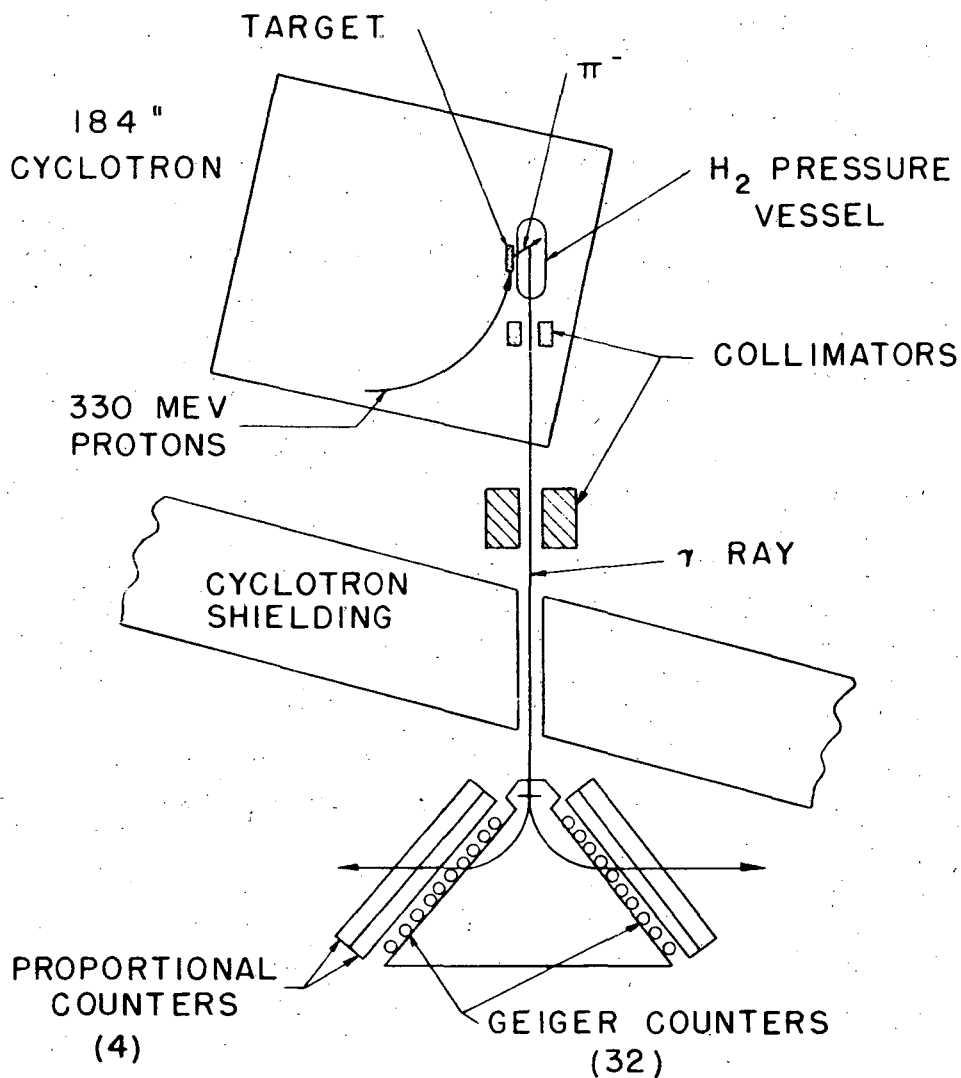


Fig. 1 — Geometrical layout (not to scale) of components of the π^- absorption experiment. π^- mesons from the primary target struck by 330-Mev protons are absorbed in the H₂ pressure vessel. The resultant gamma rays are collimated and analyzed in a 90° pair spectrometer.

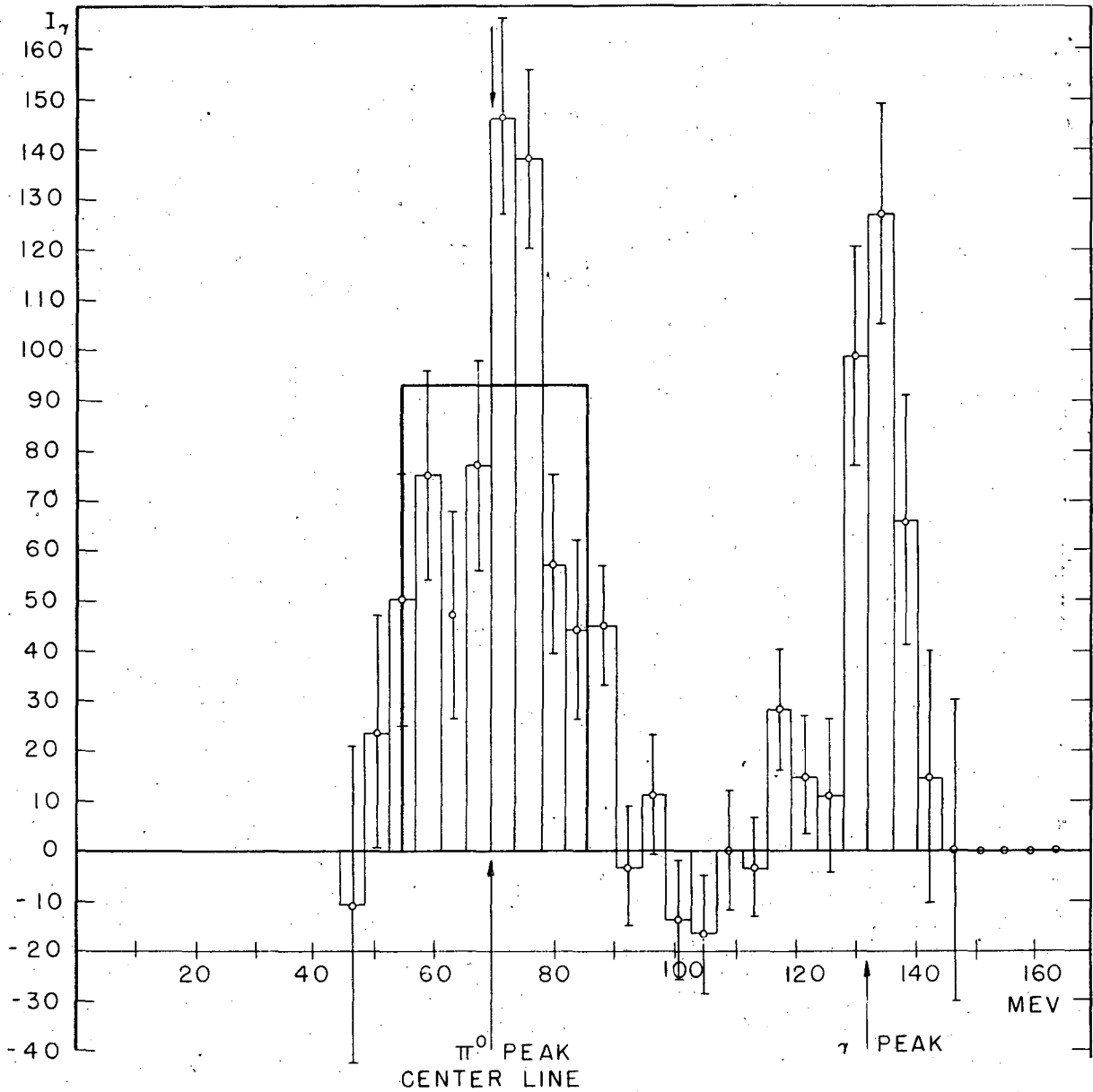


Fig. 2—Gamma-ray spectrum from the absorption of π^- mesons in H_2 with center of spectrometer set near a gamma-ray energy of 100 Mev. The center line of the π^0 peak and the γ peak as computed from a π^- rest energy of 141 Mev are marked. Also the theoretical π^0 spectrum (rectangular contour) is shown to correspond in area to the observed constant and in width to the curve of Fig. 3.

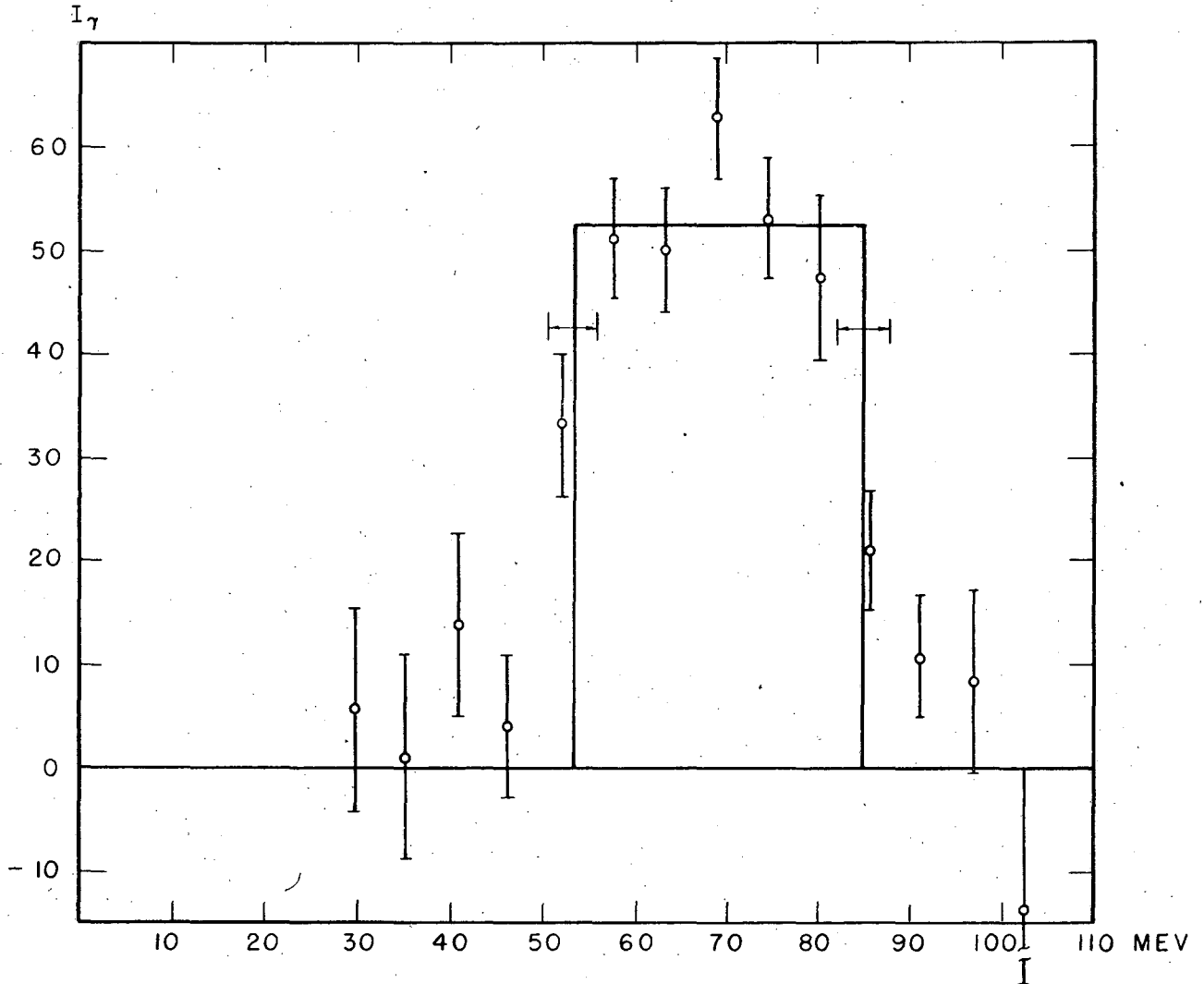


Fig. 3—Gamma-ray spectrum with center of spectrometer set near 70 Mev. The best fit of rectangular contour is shown and the estimate of the probable error of the lower and upper limit of the spectrum is indicated.

END OF DOCUMENT