

UCSF

UC San Francisco Previously Published Works

Title

Progranulin Stimulates the In Vitro Maturation of Pro-Cathepsin D at Acidic pH.

Permalink

<https://escholarship.org/uc/item/71t5d579>

Journal

Journal of molecular biology, 431(5)

ISSN

0022-2836

Authors

Butler, Victoria J
Cortopassi, Wilian A
Argouarch, Andrea R
[et al.](#)

Publication Date

2019-03-01

DOI

10.1016/j.jmb.2019.01.027

Peer reviewed



Published in final edited form as:

J Mol Biol. 2019 March 01; 431(5): 1038–1047. doi:10.1016/j.jmb.2019.01.027.

Progranulin stimulates the *in vitro* maturation of pro-cathepsin D at acidic pH

Victoria J. Butler¹, Wilian A. Cortopassi², Andrea R. Argouarch¹, Sam L. Ivry^{2,3}, Charles S. Craik², Matthew P. Jacobson^{2,*}, and Aimee W. Kao^{1,*}

¹Department of Neurology, University of California, San Francisco, California, 94143, U.S.A.

²Department of Pharmaceutical Chemistry, University of California, San Francisco, California, 94143, U.S.A.

³Pharmaceutical Sciences and Pharmacogenomics Graduate Program, University of California, San Francisco, California, 94143, U.S.A

Abstract

Single-copy loss-of-function mutations in the progranulin gene (*PGRN*) underlie the neurodegenerative disease frontotemporal lobar degeneration, while homozygous loss-of-function of *PGRN* results in the lysosomal storage disorder, neuronal ceroid lipofuscinosis. Despite evidence that normal PGRN levels are critical for neuronal health, the function of this protein is not yet understood. Here, we show that PGRN stimulates the *in vitro* maturation of the lysosomal aspartyl protease cathepsin D (CTSD). CTSD is delivered to the endolysosomal system as an inactive precursor (proCTSD) and requires sequential cleavage steps via intermediate forms to achieve the mature state (matCTSD). In co-immunoprecipitation experiments PGRN interacts predominantly with immature pro- and intermediate forms of CTSD. PGRN enhances *in vitro* conversion of proCTSD to matCTSD in a concentration-dependent manner. Differential scanning fluorimetry shows a destabilizing effect induced by PGRN on proCTSD folding ($T_m = -1.7^\circ\text{C}$ at a 3:1 molar ratio). We propose a mechanism whereby PGRN binds to proCTSD, destabilizing the propeptide from the enzyme catalytic core and favoring conversion to mature forms of the enzyme. Further understanding of the role of PGRN in CTSD maturation will assist in the development of targeted therapies for neurodegenerative disease.

Keywords

progranulin; cathepsin D; maturation; propeptide; neurodegeneration; lysosome; protease

*Co-corresponding authors. Correspondence to: matt.jacobson@ucsf.edu and aimee.kao@ucsf.edu.

Publisher's Disclaimer: This is a PDF file of an unedited manuscript that has been accepted for publication. As a service to our customers we are providing this early version of the manuscript. The manuscript will undergo copyediting, typesetting, and review of the resulting proof before it is published in its final citable form. Please note that during the production process errors may be discovered which could affect the content, and all legal disclaimers that apply to the journal pertain.

INTRODUCTION

Progranulin (PGRN) is a highly conserved glycoprotein implicated in diverse biological processes^{1; 2; 3}. Loss-of-function mutations in one copy of the progranulin gene (*PGRN*) cause the adult-onset neurodegenerative disease, frontotemporal lobar degeneration (FTLD)^{4; 5}, whereas homozygous null mutations result in the childhood-onset lysosomal storage disorder, neuronal ceroid lipofuscinosis (NCL)⁶. In addition, PGRN is over-expressed in cancerous cells, where it can promote tumor growth and metastasis^{7; 8; 9}. This suggests an important role for PGRN in regulating cellular growth, lysosome function and neuronal health. Indeed, loss of PGRN results in dysfunctional lysosomes^{10; 11; 12}, and PGRN repletion has a beneficial effect on disease pathology in animal models of both Alzheimer's¹³ and Parkinson's disease¹⁴.

Cathepsin D (CTSD) is a lysosomal aspartyl protease with nearly ubiquitous tissue expression^{15; 16}. In striking parallel to PGRN, CTSD loss-of-function is implicated in lysosomal storage disorders^{17; 18} and neurodegeneration^{19; 20}. In addition, it is over-expressed and secreted from multiple cancerous cell types^{21; 22}, where it stimulates invasion and metastasis^{23; 24; 25}. CTSD is synthesized as an inactive pro-protein (proCTSD, ~52kDa) and undergoes several proteolytic processing steps to a mature active protease (matCTSD, ~30kDa) in the lysosomal compartment²⁶. These include removal of a forty-four amino acid propeptide²⁶ and the cleavage of the single-chain protein into a ~30kDa heavy chain and a ~15kDa light chain, held together in the mature enzyme through non-covalent interactions^{26; 27; 28}.

The propeptide of CTSD is required for proper folding of the proenzyme, lysosomal targeting and ensures the enzyme remains inactive until activation in the appropriate environment²⁹. It obstructs access to the active site cleft, thereby preventing protease activity^{30; 31}, although there is evidence of proCTSD activity on small peptides³². The propeptide can be removed by cysteine proteases *in vivo*^{28; 33; 34} and in an autocatalytic manner triggered by acidification *in vitro*^{32; 35; 36}. An exon 2 polymorphism within the propeptide region of CTSD can disrupt normal maturation of proCTSD and has been associated with neurodegenerative disease^{20; 37; 38}. This Ala38Val substitution results in higher proCTSD secretion, reduced maturation of the enzyme³⁸ and increased levels of beta-amyloid³⁹ and tau protein³⁷ in Alzheimer's disease.

Recently, several studies have reported an interaction between PGRN and CTSD^{40; 41; 42}, and have proposed that PGRN may stimulate CTSD protease activity^{43; 44}. Indeed, CTSD activity is reduced in both mouse and patient-derived cell models of PGRN deficiency^{41; 43; 44; 45}. Despite these advances, the molecular basis of the CTSD/PGRN interaction remains elusive. In this study, we demonstrate that PGRN induces a destabilizing effect on proCTSD which promotes its maturation to the enzymatically active mature form. We propose a kinetic model whereby PGRN binds the CTSD propeptide to destabilize its interaction with the enzyme catalytic core. Our results suggest a potential mechanism for PGRN deficiency contributing to lysosomal dysfunction and neuronal cell loss.

RESULTS AND DISCUSSION

PGRN binds predominantly to pro-forms of CTSD in a co-immunoprecipitation assay

Several recent studies have shown that PGRN can bind to CTSD, where it may function to regulate CTSD stability and protease activity^{41; 43; 44}. We confirmed this interaction through the expression and co-immunoprecipitation of tagged PGRN and proCTSD in HEK293FT cells (Figure 1). Here, we noted that primarily pro- (~52kDa) and intermediate (~40-50kDa) forms of CTSD bind to PGRN, rather than the final mature forms of CTSD, consisting of the heavy (~30kDa) and light (~15kDa) chains. This was a first indication that PGRN may bind to CTSD primarily via the propeptide and could thereby effectively function in regulating the maturation of proCTSD to matCTSD. Such a preferential interaction with proCTSD has also been shown for prosaposin⁴⁶, a lysosomal protein of modulatory structure like PGRN⁴⁷ which is known to interact with PGRN^{48; 49}.

PGRN reduces the melting temperature of proCTSD through a destabilizing effect

As our immunoprecipitation results suggest a specific interaction between PGRN and proCTSD, we sought to evaluate how this interaction impacts the conformational stability of proCTSD *in vitro*. Differential scanning fluorimetry (DSF) is a technique that can measure the melting temperature (T_m), or stability, of recombinant proteins alone or in complexes. We first confirmed the purity and correct molecular weight of commercially available recombinant PGRN and proCTSD proteins by silver stain and SDS-PAGE (Figure S1). We next performed DSF on these proteins at neutral pH to assess their stability in the absence of auto-activation of proCTSD to matCTSD. When subjected to DSF, PGRN alone did not show an unfolding transition on increasing temperature (Figure 2A and Figure S2). This suggests that recombinant PGRN is thermally stable, as expected from its highly disulfide-bonded structure^{50; 51}. ProCTSD alone showed an unfolding transition at a T_m of 50.7°C (Figure 2A and Figure S2). The addition of PGRN to proCTSD at a 3:1 molar ratio caused a significant destabilizing effect on the T_m of proCTSD ($T_m = -1.7^\circ\text{C}$) (Figure 2A). Lower molar ratios of PGRN to proCTSD (2:1 and 1:1) resulted in a concentration-dependent temperature shift of -0.6°C and -0.3°C , respectively (Figure 2B and Figure S2).

We noted that the unfolding curve for the proCTSD:PGRN complex presented with a larger change in fluorescence than for proCTSD alone ($F_{\text{proCTSD:PGRN}} > 1500\text{a.u.}$; $F_{\text{proCTSD}} < 1000\text{a.u.}$) (Figure S2A), suggesting an increase in exposure of proCTSD hydrophobic residues and cooperativity in unfolding in the presence of PGRN. Interestingly, a similar mechanism of action has been proposed for sulfated polysaccharides on both aspartyl³¹ and cysteine proteases^{52; 53; 54}, whereby destabilization of the propeptide favors its cleavage. These negatively charged compounds are hypothesized to interact with Arg3 and Arg11 residues of the CTSD propeptide, reducing their electrostatic interaction with residues Asp181 and Asp12 of the enzyme catalytic core³¹.

PGRN increases the conversion rate of proCTSD to matCTSD

Given that PGRN binds to and destabilizes proCTSD, we next evaluated a potential role for PGRN in proCTSD maturation at an acidic pH of 3.4. In the presence of PGRN we noted an increase in the formation of matCTSD (Figure 3A-D). We observed the same result with a

differentially-tagged recombinant PGRN purchased from an alternate source (Figure S3). To test for a concentration-dependent effect of PGRN on proCTSD conversion to matCTSD, we estimated the kinetics of maturation from the immunoblot signals. First, we assessed whether there was a concentration-dependent conversion of proCTSD to matCTSD in the absence of PGRN. Indeed, we observed a concentration-dependence in the maturation of proCTSD alone (Figure S4). Calculation of the initial velocities (V_0) of these reactions with increasing proCTSD concentration demonstrated that V_0 increases non-linearly with proCTSD concentration, consistent with a quadratic relationship (Appendix 1), as predicted from an intermolecular activation mechanism (Figure S4). We next calculated V_0 for proCTSD maturation in the presence of increasing concentrations of PGRN. We found that V_0 increased with increasing PGRN concentration (Figure 3E-F), confirming a concentration-dependent increase in proCTSD maturation in the presence of PGRN. Both PGRN and proCTSD undergo direct trafficking to the lysosome via the mannose-6-phosphate receptor pathway^{49; 55; 56}. It is possible that at least part of this trafficking may occur in complex together. On reaching the lysosome, this may allow PGRN to regulate the maturation and/or activity of the protease. Such a role for PGRN in proCTSD maturation may help to explain the impaired CTSD activity observed in models of PGRN deficiency^{41; 43; 44}. Indeed, CTSD activity (V_{max}) was increased by approximately 50% in the presence of PGRN at a 3:1 molar ratio (Figure S5).

A kinetic model for the role of PGRN in proCTSD maturation

ProCTSD undergoes *in vitro* maturation to its heavy (~30kDa) and light (~15kDa) chains at acidic pH, a process that involves the cleavage of the 44 residue propeptide³². Initially, the first molecules of proCTSD are processed to matCTSD through a slow intramolecular cleavage mechanism³². The newly formed matCTSD then accelerates the maturation process further by cleaving the propeptide from proCTSD through an intermolecular activation mechanism³². We developed a simple kinetic model for the role of PGRN in converting proCTSD to matCTSD (Appendix 1) and hypothesize that destabilizing the interaction of the propeptide with the enzyme catalytic core facilitates its cleavage by matCTSD molecules (Figure 4).

Our kinetic model suggests that the concentration of matCTSD in cells would depend on the concentration of PGRN (Appendix 1). As such, loss-of-function mutations in PGRN would be expected to impair the maturation of proCTSD to matCTSD and thus reduce protease activity. Such a reduction in CTSD enzymatic activity has been observed in several recent studies^{41; 43; 44; 45}. Despite these observed impairments in CTSD enzymatic activity, studies also report an increase in pro-CTSD and/or matCTSD expression levels on loss of PGRN^{43; 44; 57; 58; 59}. It is possible that these changes in CTSD expression level represent a compensatory transcriptional response to promote lysosome function^{60; 61}. Such cellular compensatory responses highlight the importance of utilizing *in vitro* assays to isolate the direct molecular effect of PGRN on CTSD. Furthermore, CTSD expression is nearly ubiquitous but there are certain cell types where progranulin expression is low (e.g. neurons, muscle, adipose, soft tissue). As CTSD can undergo a slow auto-activation mechanism by itself at acidic pH, it is likely that the presence of PGRN for CTSD maturation is not an absolute requirement in all cell types under all conditions. PGRN expression may perhaps be

a regulatory mechanism to “tune up” CTSD activity. Furthermore, PGRN is a secreted glycoprotein, and therefore cell autonomous expression is not required in order for PGRN to affect protease function. We also cannot exclude other mechanisms regulating CTSD maturation, such as other proteases. Despite this, the data presented here suggest that the impairment of CTSD activity observed in cell models of PGRN deficiency may result from a role for PGRN in proCTSD maturation.

CONCLUSION

In this work, we investigated the nature of the interaction between PGRN and proCTSD and discovered a function for PGRN in promoting the *in vitro* maturation of this aspartyl protease. DSF studies highlight a potential mechanism for this, whereby PGRN may bind the propeptide region of proCTSD, destabilizing its interaction with the CTSD catalytic core. This may increase accessibility for intermolecular cleavage of the inhibitory propeptide, promoting formation of the active matCTSD. Further investigation will be required to determine which domains of the PGRN molecule mediate the interaction with, and stimulate the maturation of, proCTSD. A potential role for PGRN in lysosomal aspartyl protease maturation will aid in understanding of the mechanism underlying neurodegenerative diseases that are linked to PGRN loss-of-function.

METHODS

HEK293FT transfections and co-immunoprecipitation assays

The cDNAs for human progranulin (a generous gift from Professor Robert Farese) and proCTSD (GenScript #OHu26913) were sub-cloned into the pSecTag2B vector (ThermoFisher, #V90020). Progranulin was expressed with an N-terminal FLAG tag and proCTSD was expressed with an N-terminal His tag. HEK293FT cells (3×10^6) were seeded into 10cm plates and grown to 60% confluency. 5 μ g total DNA was transfected (Opti-MEM, ThermoFisher, #31985070, X-tremeGENE HP DNA Transfection Reagent, Sigma Aldrich, #6366236001). Cells were collected forty-eight hours later and re-suspended in lysis buffer with protease inhibitor (50mM Tris pH 7.4 (Teknova #T5074), 150mM NaCl (Fisher #S271-3), 1% Nonidet P-40 (Thermo Scientific #85124), cOmplete protease inhibitor (Roche, #04693124001). Cells were lysed for one hour on ice, centrifuged at 20,000g for 20 minutes and the supernatant was collected. The protein concentration of samples was measured by BCA. Immunoprecipitation was carried out against the FLAG tag on progranulin (Sigma Aldrich, #M8823).

ProCTSD thermal denaturation by DSF

DSF measurements ($\lambda_{\text{ex}} = 490\text{nm}$, $\lambda_{\text{em}} 610\text{nm}$) were performed in 96-well plates (USA Scientific #1402-9590) on a Biorad CFX96 instrument. Thermal denaturation assays (70 μ l) for 1.5 μ M proCTSD (R&D Systems Inc., #1014-AS) were measured in the presence and absence of PGRN (R&D Systems, #2420-PG-050) in 50mM Tris-HCl (Teknova #T5074), 150mM NaCl (Fisher #S271-3) pH 7.4. SyproOrange (Sigma #S5692) was added to all wells. Thermal denaturation curves were recorded over a temperature range from 25–95°C with 1°C min⁻¹ increments. All measurements were carried out in triplicate.

Time-dependent immunoblotting for proCTSD maturation

Assays were run in 20 μ l of 100mM sodium citrate buffer (pH 3.4). 75nM of recombinant cathepsin D (R&D Systems, #1014-AS) was incubated in the absence or presence of 75, 100 or 150nM recombinant progranulin (R&D Systems, #2420-PG-050). Reactions were incubated at 37°C and then immediately terminated through the addition of 4 x LDS (Thermo #NP0007) and 10% sample reducing agent (Thermo #NP0009). Samples were boiled at 70°C for 10 minutes, analyzed by SDS PAGE on 10% gradient Bis Tris gels (Thermo #NP0302BOX) and transferred to PVDF membrane (Bio-Rad #1620177). Membranes were immunoblotted with an anti-cathepsin D primary antibody (R&D Systems Inc., #AF1014, 1:250 dilution) and a donkey anti-goat secondary antibody (LI-COR IRDye 800CW, #925-32214, 1:10,000 dilution). Membranes were imaged on the Licor Odyssey system and quantified in Licor Image Studio Lite version 5.2 software. Background-corrected signal for 30kDa CTSD bands were divided by total signal (30kDa + 50kDa bands) to obtain a fraction of conversion. This was plotted against time and points were fitted to Michaelis-Menten equation. Initial velocities were calculated using the first four time points of incubation (0, 2, 5 and 10 minutes). Linear regression analysis was performed in GraphPad Prism Version 6. Initial velocities were plotted against proCTSD or PGRN concentration. Silver staining of commercial recombinant protein was carried out using the SilverQuest Silver Staining Kit (Thermo Fisher #LC6070). The anti-paragranulin antibody was made in-house (GRN P.1, epitope TRCPDGQFCPVACCLDPGGASYSCCRPLLD, 1:500 dilution) and used with a goat anti-mouse secondary antibody (LI-COR IRDye 800CW, #925-32210, 1:10,000 dilution).

In vitro cathepsin D activity assays

Fluorescent protease activity assays were performed in triplicate in black, flat-bottom 384 well plates (Greiner #781091). Assays were run for 2 hours in 15 μ l of sodium acetate buffer (pH 3.5). 20nM of cathepsin D (R&D Systems Inc., #1014-AS) was used for all assays with 5 μ M of a fluorescent substrate that was identified previously (Lys(7-methoxycoumarin-4-acetic acid) Arg-Gly-Leu-Tyr-Phe-Ile-Thr-His-Lys(dinitrophenol))⁶². Assays were run in the absence or presence of 65nM progranulin (R&D Systems Inc., #2420-PG-050). Fluorescent substrate cleavage was monitored every 30 seconds with a Biotek Synergy HT plate reader using excitation and emission wavelengths of 328nm and 393nm, respectively. Linear regression analysis was performed in GraphPad Prism Version 6 on 20 consecutive time points to calculate the maximal CTSD enzymatic activity in the presence of unlimited substrate (maximal velocity, V_{max}). Data were normalized to the CTSD alone condition.

Supplementary Material

Refer to Web version on PubMed Central for supplementary material.

ACKNOWLEDGMENTS

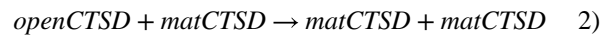
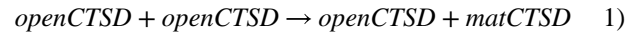
This work was supported by National Institutes of Health R21NS082709 and R01NS095257, the Alzheimer's Disease Research Center, the Consortium for Frontotemporal Dementia Research, the UCSF School of Medicine Irene Perstein Award, the John Douglas French Alzheimer's Foundation and the Brain Research Foundation (A.W.K.). We also thank The James and Barbara Knappe Family Foundation for research support. We thank Joseph Lobel for technical advice with DSF assays, and members of the Kao lab for helpful discussions.

Appendix 1

We developed a simple kinetic model for the role of PGRN in converting proCTSD to matCTSD. We propose a multi-step mechanism involving the destabilization of the propeptide, where $openCTSD = proCTSD$ with destabilized propeptide:



Therefore, matCTSD can be generated through:



Here, we assume the destabilized propeptide may not interfere with CTSD activity and we consider that 1) and 2) may have the kinetic rate constants $2k_1$ and k_1 , respectively. We also assume that proOPEN is catalytically active, with similar activity to matCTSD, i.e. removing the auto-inhibition of the propeptide can occur reversibly by conformational changes, as well as irreversibly by cleavage.

For 1):

$$\frac{\delta[matCTSD]}{\delta t} = 2k_1[openCTSD]^2$$

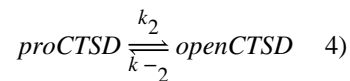
For 2):

$$\frac{\delta[matCTSD]}{\delta t} = k_1[openCTSD][matCTSD]$$

Summing 1) and 2) to calculate total matCTSD produced:

$$\frac{\delta[matCTSD]}{\delta t} = k_1[openCTSD](2[openCTSD] + [matCTSD]) \quad 3)$$

In addition, proCTSD will convert to openCTSD with a kinetic rate constant of k_2 :



Where:

$$\frac{\delta[\textit{openCTSD}]}{\delta t} = k_2[\textit{proCTSD}] - k_{-2}[\textit{openCTSD}] \quad 5)$$

Considering equilibrium:

$$k_2[\textit{proCTSD}] - k_{-2}[\textit{openCTSD}] = 0$$

$$[\textit{openCTSD}] = \frac{k_2}{k_{-2}}[\textit{proCTSD}]$$

Substituting for equation 5) into equation 3):

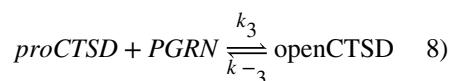
$$\frac{\delta[\textit{matCTSD}]}{\delta t} = 2k_1 \cdot \left[\frac{k_2}{k_{-2}} \right]^2 [\textit{proCTSD}]^2 + k_1[\textit{matCTSD}] \cdot \left[\frac{k_2}{k_{-2}} \right] [\textit{proCTSD}] \quad 6)$$

At the initiation of the reaction, $[\textit{matCTSD}] \rightarrow 0$, therefore:

$$\frac{\delta[\textit{matCTSD}]}{\delta t} \approx 2k_1 \cdot \left[\frac{k_2}{k_{-2}} \right]^2 [\textit{proCTSD}]^2 \quad 7)$$

Therefore, the rate of production of matCTSD is predicted to depend quadratically on the concentration of proCTSD. The observed kinetics (Figure S4) appears to be even “steeper” than quadratic, but it is clearly not linear.

If PGRN binds the propeptide, in the presence of PGRN;



where:

$$\frac{k_3}{k_{-3}} = \frac{[\textit{openCTSD}]}{[\textit{proCTSD}][\textit{PGRN}]} \quad 9)$$

Combining equations 9) and 5):

$$\frac{k_2}{k_{-2}} = \frac{k_3}{k_{-3}}[PGRN] \quad 10)$$

Combining equations 10) and 7):

$$\frac{\delta[\text{matCTSD}]}{\delta t} \approx 2k_1 \cdot \left[\frac{k_3}{k_{-3}} \right]^2 [PGRN]^2 [\text{proCTSD}]^2 \quad 11)$$

Therefore, the production of matCTSD is also predicted to depend quadratically on the concentration of PGRN which is consistent with Figure 3F.

REFERENCES

1. Bateman A & Bennett HP (2009). The granulin gene family: from cancer to dementia. *Bioessays* 31, 1245–54. [PubMed: 19795409]
2. Cenik B, Sephton CF, Kutluk Cenik B, Herz J & Yu G (2012). Progranulin: a proteolytically processed protein at the crossroads of inflammation and neurodegeneration. *J Biol Chem* 287, 32298–306. [PubMed: 22859297]
3. Kao AW, McKay A, Singh PP, Brunet A & Huang EJ (2017). Progranulin, lysosomal regulation and neurodegenerative disease. *Nat Rev Neurosci*.
4. Baker M, Mackenzie IR, Pickering-Brown SM, Gass J, Rademakers R, Lindholm C, Snowden J, Adamson J, Sadovnick AD, Rollinson S, Cannon A, Dwosh E, Neary D, Melquist S, Richardson A, Dickson D, Berger Z, Eriksen J, Robinson T, Zehr C, Dickey CA, Crook R, McGowan E, Mann D, Boeve B, Feldman H & Hutton M (2006). Mutations in progranulin cause tau-negative frontotemporal dementia linked to chromosome 17. *Nature* 442, 916–9. [PubMed: 16862116]
5. Cruts M, Kumar-Singh S & Van Broeckhoven C (2006). Progranulin mutations in ubiquitin-positive frontotemporal dementia linked to chromosome 17q21. *Curr Alzheimer Res* 3, 485–91. [PubMed: 17168647]
6. Smith KR, Damiano J, Franceschetti S, Carpenter S, Canafoglia L, Morbin M, Rossi G, Pareyson D, Mole SE, Staropoli JF, Sims KB, Lewis J, Lin WL, Dickson DW, Dahl HH, Bahlo M & Berkovic SF (2012). Strikingly different clinicopathological phenotypes determined by progranulin-mutation dosage. *Am J Hum Genet* 90, 1102–7. [PubMed: 22608501]
7. He Z & Bateman A (1999). Progranulin gene expression regulates epithelial cell growth and promotes tumor growth in vivo. *Cancer Res* 59, 3222–9. [PubMed: 10397269]
8. Tangkeangsirisin W & Serrero G (2004). PC cell-derived growth factor (PCDGF/GP88, progranulin) stimulates migration, invasiveness and VEGF expression in breast cancer cells. *Carcinogenesis* 25, 1587–92. [PubMed: 15117809]
9. Monami G, Emiliozzi V, Bitto A, Lovat F, Xu SQ, Goldoni S, Fassan M, Serrero G, Gomella LG, Baffa R, Iozzo RV & Morrione A (2009). Proepithelin regulates prostate cancer cell biology by promoting cell growth, migration, and anchorage-independent growth. *Am J Pathol* 174, 1037–47. [PubMed: 19179604]
10. Ahmed Z, Sheng H, Xu Y, Lin W, Innes A, Gass J, Yu X, Hou H, Chiba S, Yamanouchi K, Leissring M, Petrucelli L, Nishihara M, Hutton M, McGowan E, Dickson D & Lewis J (2010). Accelerated Lipofuscinosis and Ubiquitination in Granulin Knockout Mice Suggests a Role for Progranulin in Successful Aging. *Am J Pathol* 177, 311–24. [PubMed: 20522652]
11. Petkau TL, Neal SJ, Milnerwood A, Mew A, Hill AM, Orban P, Gregg J, Lu G, Feldman HH, Mackenzie IR, Raymond LA & Leavitt BR (2012). Synaptic dysfunction in progranulin-deficient mice. *Neurobiol Dis* 45, 711–22. [PubMed: 22062772]

12. Wils H, Kleinberger G, Pereson S, Janssens J, Capell A, Van Dam D, Cuijt I, Joris G, De Deyn PP, Haass C, Van Broeckhoven C & Kumar-Singh S (2012). Cellular ageing, increased mortality and FTLN-TDP-associated neuropathology in progranulin knockout mice. *J Pathol* 228, 67–76. [PubMed: 22733568]
13. Minami SS, Min SW, Krabbe G, Wang C, Zhou Y, Asgarov R, Li Y, Martens LH, Elia LP, Ward ME, Mucke L, Farese RV Jr. & Gan L (2014). Progranulin protects against amyloid beta deposition and toxicity in Alzheimer's disease mouse models. *Nat Med* 20, 1157–64. [PubMed: 25261995]
14. Van Kampen JM, Baranowski D & Kay DG (2014). Progranulin gene delivery protects dopaminergic neurons in a mouse model of Parkinson's disease. *PLoS One* 9, e97032. [PubMed: 24804730]
15. Benes P, Vetvicka V & Fusek M (2008). Cathepsin D--many functions of one aspartic protease. *Crit Rev Oncol Hematol* 68, 12–28. [PubMed: 18396408]
16. Zaidi N, Maurer A, Nieke S & Kalbacher H (2008). Cathepsin D: a cellular roadmap. *Biochem Biophys Res Commun* 376, 5–9. [PubMed: 18762174]
17. Steinfeld R, Reinhardt K, Schreiber K, Hillebrand M, Kraetzner R, Bruck W, Saftig P & Gartner J (2006). Cathepsin D deficiency is associated with a human neurodegenerative disorder. *Am J Hum Genet* 78, 988–98. [PubMed: 16685649]
18. Tyynela J, Sohar I, Sleat DE, Gin RM, Donnelly RJ, Baumann M, Haltia M & Lobel P (2000). A mutation in the ovine cathepsin D gene causes a congenital lysosomal storage disease with profound neurodegeneration. *EMBO J* 19, 2786–92. [PubMed: 10856224]
19. Davidson Y, Gibbons L, Pritchard A, Hardicre J, Wren J, Tian J, Shi J, Stopford C, Julien C, Thompson J, Payton A, Thaker U, Hayes AJ, Iwatsubo T, Pickering-Brown SM, Pendleton N, Horan MA, Burns A, Purandare N, Lendon CL, Neary D, Snowden JS & Mann DM (2006). Genetic associations between cathepsin D exon 2 C->T polymorphism and Alzheimer's disease, and pathological correlations with genotype. *J Neurol Neurosurg Psychiatry* 77, 515–7. [PubMed: 16543533]
20. Papassotiropoulos A, Bagli M, Kurz A, Kornhuber J, Forstl H, Maier W, Pauls J, Lautenschlager N & Heun R (2000). A genetic variation of cathepsin D is a major risk factor for Alzheimer's disease. *Ann Neurol* 47, 399–403. [PubMed: 10716266]
21. Bossard N, Descotes F, Bremond AG, Bobin Y, De Saint Hilaire P, Golfier F, Awada A, Mathevet PM, Berrerd L, Barbier Y & Esteve J (2003). Keeping data continuous when analyzing the prognostic impact of a tumor marker: an example with cathepsin D in breast cancer. *Breast Cancer Res Treat* 82, 47–59. [PubMed: 14672403]
22. Vetvicka V, Vetvickova J, Hilgert I, Voburka Z & Fusek M (1997). Analysis of the interaction of procathepsin D activation peptide with breast cancer cells. *Int J Cancer* 73, 403–9. [PubMed: 9359488]
23. Vignon F, Capony F, Chambon M, Freiss G, Garcia M & Rochefort H (1986). Autocrine growth stimulation of the MCF 7 breast cancer cells by the estrogenregulated 52 K protein. *Endocrinology* 118, 1537–45. [PubMed: 3948791]
24. Vetvicka V, Vektvickova J & Fusek M (1994). Effect of human procathepsin D on proliferation of human cell lines. *Cancer Lett* 79, 131–5. [PubMed: 8019970]
25. Vashishta A, Ohri SS, Proctor M, Fusek M & Vetvicka V (2006). Role of activation peptide of procathepsin D in proliferation and invasion of lung cancer cells. *Anticancer Res* 26, 4163–70. [PubMed: 17201128]
26. Erickson AH, Conner GE & Blobel G (1981). Biosynthesis of a lysosomal enzyme. Partial structure of two transient and functionally distinct NH₂-terminal sequences in cathepsin D. *J Biol Chem* 256, 11224–31. [PubMed: 6116713]
27. Conner GE & Richo G (1992). Isolation and characterization of a stable activation intermediate of the lysosomal aspartyl protease cathepsin D. *Biochemistry* 31, 1142–7. [PubMed: 1734961]
28. Gieselmann V, Hasilik A & von Figura K (1985). Processing of human cathepsin D in lysosomes in vitro. *J Biol Chem* 260, 3215–20. [PubMed: 3972822]
29. Stoka V, Turk V & Turk B (2016). Lysosomal cathepsins and their regulation in aging and neurodegeneration. *Ageing Res Rev* 32, 22–37. [PubMed: 27125852]

30. Dunn BM (2002). Structure and mechanism of the pepsin-like family of aspartic peptidases. *Chem Rev* 102, 4431–58. [PubMed: 12475196]
31. Masa M, Maresova L, Vondrasek J, Horn M, Jezek J & Mares M (2006). Cathepsin D propeptide: mechanism and regulation of its interaction with the catalytic core. *Biochemistry* 45, 15474–82. [PubMed: 17176069]
32. Wittlin S, Rosel J, Hofmann F & Stover DR (1999). Mechanisms and kinetics of procathepsin D activation. *Eur J Biochem* 265, 384–93. [PubMed: 10491196]
33. Samarel AM, Ferguson AG, Decker RS & Lesch M (1989). Effects of cysteine protease inhibitors on rabbit cathepsin D maturation. *Am J Physiol* 257, C1069–79. [PubMed: 2610247]
34. Laurent-Matha V, Derocq D, Prebois C, Katunuma N & Liaudet-Coopman E (2006). Processing of human cathepsin D is independent of its catalytic function and auto-activation: involvement of cathepsins L and B. *J Biochem* 139, 363–71. [PubMed: 16567401]
35. Hasilik A, von Figura K, Conzelmann E, Nehrkorn H & Sandhoff K (1982). Lysosomal enzyme precursors in human fibroblasts. Activation of cathepsin D precursor in vitro and activity of beta-hexosaminidase A precursor towards ganglioside GM2. *Eur J Biochem* 125, 317–21. [PubMed: 6214395]
36. James MN & Sielecki AR (1986). Molecular structure of an aspartic proteinase zymogen, porcine pepsinogen, at 1.8 Å resolution. *Nature* 319, 33–8. [PubMed: 3941737]
37. Riemenschneider M, Blennow K, Wagenpfeil S, Andreassen N, Prince JA, Laws SM, Forstl H & Kurz A (2006). The cathepsin D rs17571 polymorphism: effects on CSF tau concentrations in Alzheimer disease. *Hum Mutat* 27, 532–7. [PubMed: 16652347]
38. Touitou I, Capony F, Brouillet JP & Rochefort H (1994). Missense polymorphism (C/T224) in the human cathepsin D pro-fragment determined by polymerase chain reaction--single strand conformational polymorphism analysis and possible consequences in cancer cells. *Eur J Cancer* 30A, 390–4. [PubMed: 8204364]
39. Papassotiropoulos A, Lewis HD, Bagli M, Jessen F, Ptok U, Schulte A, Shearman MS & Heun R (2002). Cerebrospinal fluid levels of beta-amyloid(42) in patients with Alzheimer's disease are related to the exon 2 polymorphism of the cathepsin D gene. *Neuroreport* 13, 1291–4. [PubMed: 12151789]
40. Beel S, Moisse M, Damme M, De Muynck L, Robberecht W, Van den Bosch L, Saftig P & Van Damme P (2017). Progranulin functions as a cathepsin D chaperone to stimulate axonal outgrowth in vivo. *Human Molecular Genetics* 26, 2850–2863. [PubMed: 28453791]
41. Zhou X, Paushter DH, Feng T, Pardon CM, Mendoza CS & Hu F (2017). Regulation of cathepsin D activity by the FTL D protein progranulin. *Acta Neuropathol* 134, 151–153. [PubMed: 28493053]
42. Valdez C, Wong YC, Schwake M, Bu G, Wszolek ZK & Krainc D (2017). Progranulin-mediated deficiency of cathepsin D results in FTD and NCL-like phenotypes in neurons derived from FTD patients. *Hum Mol Genet* 26, 4861–4872. [PubMed: 29036611]
43. Beel S, Moisse M, Damme M, De Muynck L, Robberecht W, Van Den Bosch L, Saftig P & Van Damme P (2017). Progranulin functions as a cathepsin D chaperone to stimulate axonal outgrowth in vivo. *Hum Mol Genet* 26, 2850–2863. [PubMed: 28453791]
44. Valdez C, Wong YC, Schwake M, Bu G, Wszolek ZK & Krainc D (2017). Progranulin-mediated deficiency of cathepsin D results in FTD and NCL-like phenotypes in neurons derived from FTD patients. *Hum Mol Genet*.
45. Ward ME, Chen R, Huang HY, Ludwig C, Telpoukhovskaia M, Taubes A, Boudin H, Minami SS, Reichert M, Albrecht P, Gelfand JM, Cruz-Herranz A, Cordano C, Alavi MV, Leslie S, Seeley WW, Miller BL, Bigio E, Mesulam MM, Bogoy MS, Mackenzie IR, Staropoli JF, Cotman SL, Huang EJ, Gan L & Green AJ (2017). Individuals with progranulin haploinsufficiency exhibit features of neuronal ceroid lipofuscinosis. *Sci Transl Med* 9.
46. Gopalakrishnan MM, Grosch HW, Locatelli-Hoops S, Werth N, Smolenova E, Nettersheim M, Sandhoff K & Hasilik A (2004). Purified recombinant human prosaposin forms oligomers that bind procathepsin D and affect its autoactivation. *Biochem J* 383, 507–15. [PubMed: 15255780]
47. O'Brien JS & Kishimoto Y (1991). Saposin proteins: structure, function, and role in human lysosomal storage disorders. *FASEB J* 5, 301–8. [PubMed: 2001789]

48. Nicholson AM, Finch NA, Almeida M, Perkerson RB, van Blitterswijk M, Wojtas A, Cenik B, Rotondo S, Inskip V, Almasy L, Dyer T, Peralta J, Jun G, Wood AR, Frayling TM, Fuchsberger C, Fowler S, Teslovich TM, Manning AK, Kumar S, Curran J, Lehman D, Abecasis G, Duggirala R, Pottier C, Zahir HA, Crook JE, Karydas A, Mitic L, Sun Y, Dickson DW, Bu G, Herz J, Yu G, Miller BL, Ferguson S, Petersen RC, Graff-Radford N, Blangero J & Rademakers R (2016). Prosaposin is a regulator of progranulin levels and oligomerization. *Nat Commun* 7, 11992. [PubMed: 27356620]
49. Zhou X, Sun L, Bastos de Oliveira F, Qi X, Brown WJ, Smolka MB, Sun Y & Hu F (2015). Prosaposin facilitates sortilin-independent lysosomal trafficking of progranulin. *J Cell Biol* 210, 991–1002. [PubMed: 26370502]
50. Tolkatchev D, Malik S, Vinogradova A, Wang P, Chen Z, Xu P, Bennett HP, Bateman A & Ni F (2008). Structure dissection of human progranulin identifies well-folded granulin/epithelin modules with unique functional activities. *Protein Sci* 17, 711–24. [PubMed: 18359860]
51. Tolkatchev D, Ng A, Vranken W & Ni F (2000). Design and solution structure of a well-folded stack of two beta-hairpins based on the amino-terminal fragment of human granulin A. *Biochemistry* 39, 2878–86. [PubMed: 10715107]
52. Almeida PC, Nantes IL, Chagas JR, Rizzi CC, Faljoni-Alario A, Carmona E, Juliano L, Nader HB & Tersariol IL (2001). Cathepsin B activity regulation. Heparin-like glycosaminoglycans protect human cathepsin B from alkaline pH-induced inactivation. *J Biol Chem* 276, 944–51. [PubMed: 11016923]
53. Rozman J, Stojan J, Kuhelj R, Turk V & Turk B (1999). Autocatalytic processing of recombinant human procathepsin B is a bimolecular process. *FEBS Lett* 459, 358–62. [PubMed: 10526165]
54. Yasuda Y, Li Z, Greenbaum D, Bogyo M, Weber E & Bromme D (2004). Cathepsin V, a novel and potent elastolytic activity expressed in activated macrophages. *J Biol Chem* 279, 36761–70. [PubMed: 15192101]
55. Fortenberry SC, Schorey JS & Chirgwin JM (1995). Role of glycosylation in the expression of human procathepsin D. *J Cell Sci* 108 (Pt 5), 2001–6. [PubMed: 7657720]
56. von Figura K & Hasilik A (1986). Lysosomal enzymes and their receptors. *Annu Rev Biochem* 55, 167–93. [PubMed: 2943218]
57. Gotzl JK, Colombo AV, Fellerer K, Reifschneider A, Werner G, Tahirovic S, Haass C & Capell A (2018). Early lysosomal maturation deficits in microglia triggers enhanced lysosomal activity in other brain cells of progranulin knockout mice. *Mol Neurodegener* 13, 48. [PubMed: 30180904]
58. Gotzl JK, Mori K, Damme M, Fellerer K, Tahirovic S, Kleinberger G, Janssens J, van der Zee J, Lang CM, Kremmer E, Martin JJ, Engelborghs S, Kretzschmar HA, Arzberger T, Van Broeckhoven C, Haass C & Capell A (2014). Common pathobiochemical hallmarks of progranulin-associated frontotemporal lobar degeneration and neuronal ceroid lipofuscinosis. *Acta Neuropathol* 127, 845–60. [PubMed: 24619111]
59. Tanaka Y, Suzuki G, Matsuwaki T, Hosokawa M, Serrano G, Beach TG, Yamanouchi K, Hasegawa M & Nishihara M (2017). Progranulin regulates lysosomal function and biogenesis through acidification of lysosomes. *Hum Mol Genet*.
60. Sardiello M, Palmieri M, di Ronza A, Medina DL, Valenza M, Gennarino VA, Di Malta C, Donaudo F, Embrione V, Polishchuk RS, Banfi S, Parenti G, Cattaneo E & Ballabio A (2009). A gene network regulating lysosomal biogenesis and function. *Science* 325, 473–7. [PubMed: 19556463]
61. Settembre C, Di Malta C, Polito VA, Garcia Arencibia M, Vetrini F, Erdin S, Erdin SU, Huynh T, Medina D, Colella P, Sardiello M, Rubinsztein DC & Ballabio A (2011). TFEB links autophagy to lysosomal biogenesis. *Science* 332, 1429–33. [PubMed: 21617040]
62. Ivry SL, Sharib JM, Dominguez DA, Roy N, Hatcher SE, Yip-Schneider MT, Schmidt CM, Brand RE, Park WG, Hebrok M, Kim GE, O'Donoghue AJ, Kirkwood KS & Craik CS (2017). Global Protease Activity Profiling Provides Differential Diagnosis of Pancreatic Cysts. *Clin Cancer Res* 23, 4865–4874. [PubMed: 28424202]

Highlights

- Interaction of progranulin and pro-cathepsin D was investigated *in vitro*.
- Progranulin binds to pro- and intermediate forms of cathepsin D in co-immunoprecipitation experiments.
- Progranulin stimulates the maturation of pro-cathepsin D to its mature form *in vitro* at acidic pH.
- We propose a kinetic model for the stimulation of pro-cathepsin D maturation by progranulin, involving destabilization of the cathepsin D propeptide.

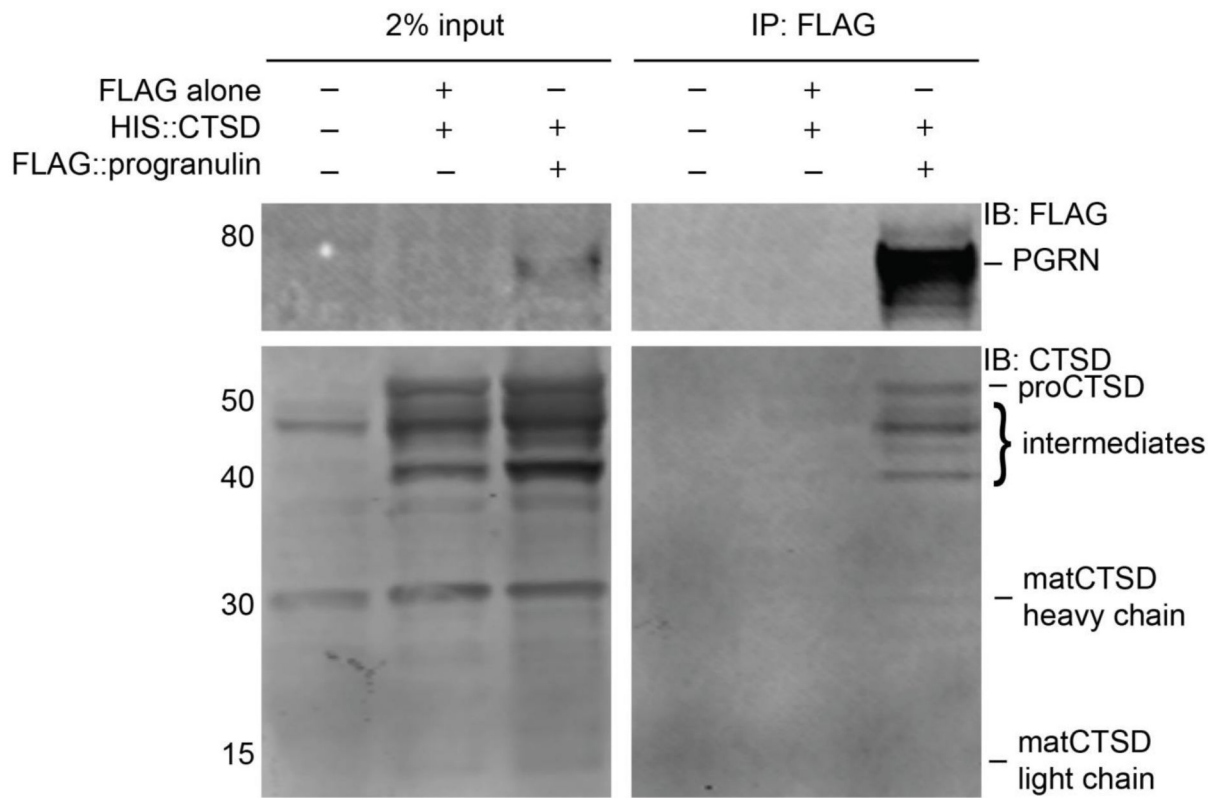


Figure 1. PGRN binds predominantly to pro- and intermediate forms of CTSD.

Pulldown of proCTSD with PGRN expressed in HEK293FT cells. Immunoprecipitation was performed against the FLAG epitope on FLAG-tagged PGRN. Immunoblotting was performed with anti-FLAG and anti-CTSD antibodies. Immunoblots are representative of three independent experiments.

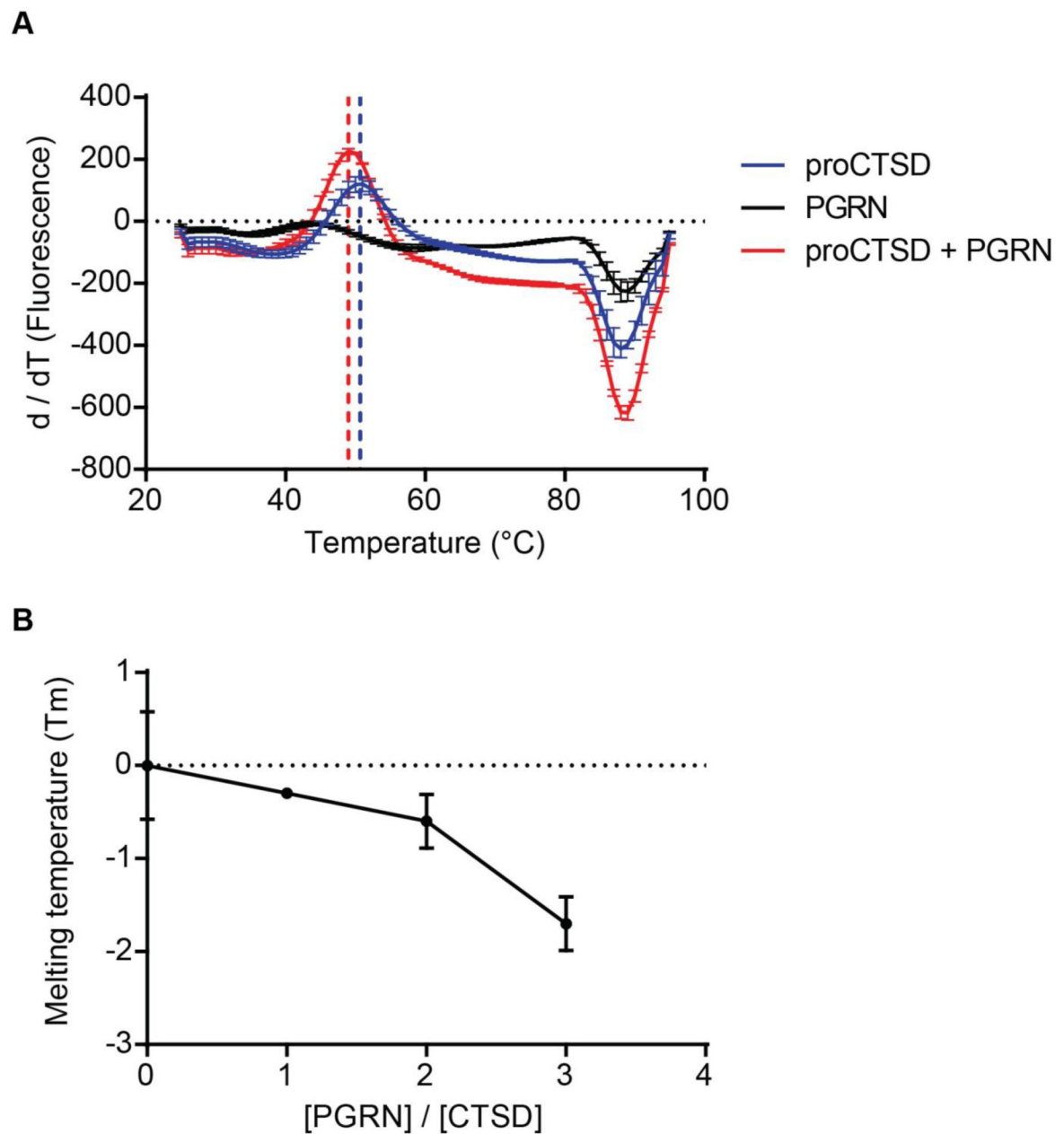


Figure 2. PGRN reduces the melting temperature of proCTSD through a destabilizing effect. (A) Differential scanning fluorimetry (DSF) was used to obtain fluorescent intensity curves versus temperature, and the curve derivatives are plotted for recombinant proteins: 1.5 μM HIS-tagged proCTSD alone (blue), 4.5 μM HIS-tagged PGRN alone (black), and 1.5 μM proCTSD with 4.5 μM PGRN (red). DSF was performed at neutral pH 7.4. Assays were run in triplicate and values plotted are mean \pm SEM. (B) Melting temperature, T_m , for PGRN:proCTSD complex at increasing molar ratios of PGRN.

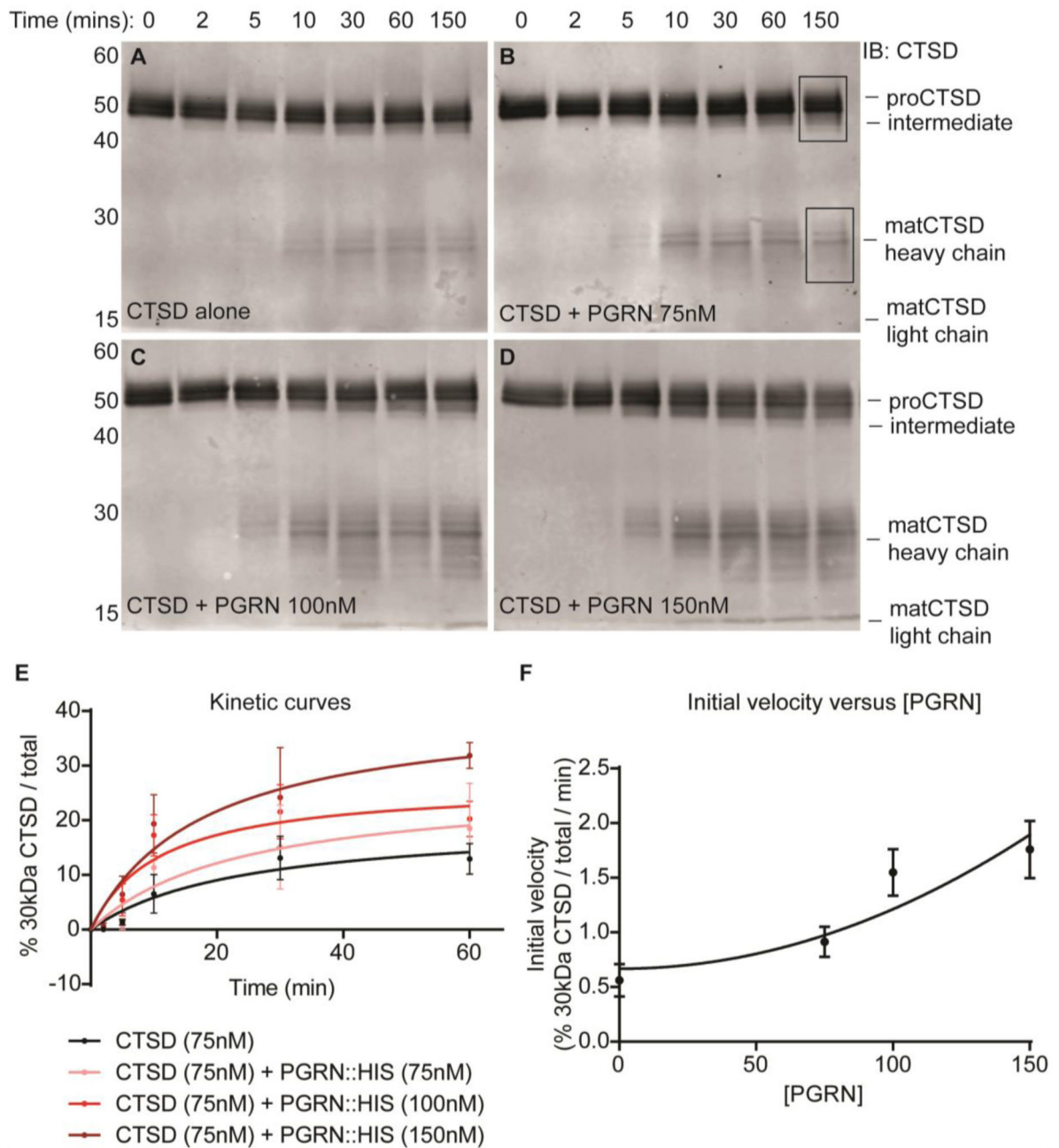


Figure 3. PGRN increases the conversion rate of proCTSD to matCTSD.

(A-D) *In vitro* maturation time-course assays for recombinant HIS-tagged proCTSD at pH 3.4 in the **(A)** absence ($n = 4$) and presence of **(B)** 75nM ($n = 3$), **(C)** 100nM ($n = 3$) and **(D)** 150nM ($n = 3$) HIS-tagged PGRN. Membranes were immunoblotted with anti-CTSD antibody. Boxed regions in panel B indicate the signal measured for quantification of % 30kDa CTSD / total. **(E)** Michaelis-Menten kinetic curves for the conversion of proCTSD to matCTSD. **(F)** Correlation between initial velocity of reaction (V_0) and PGRN concentration.

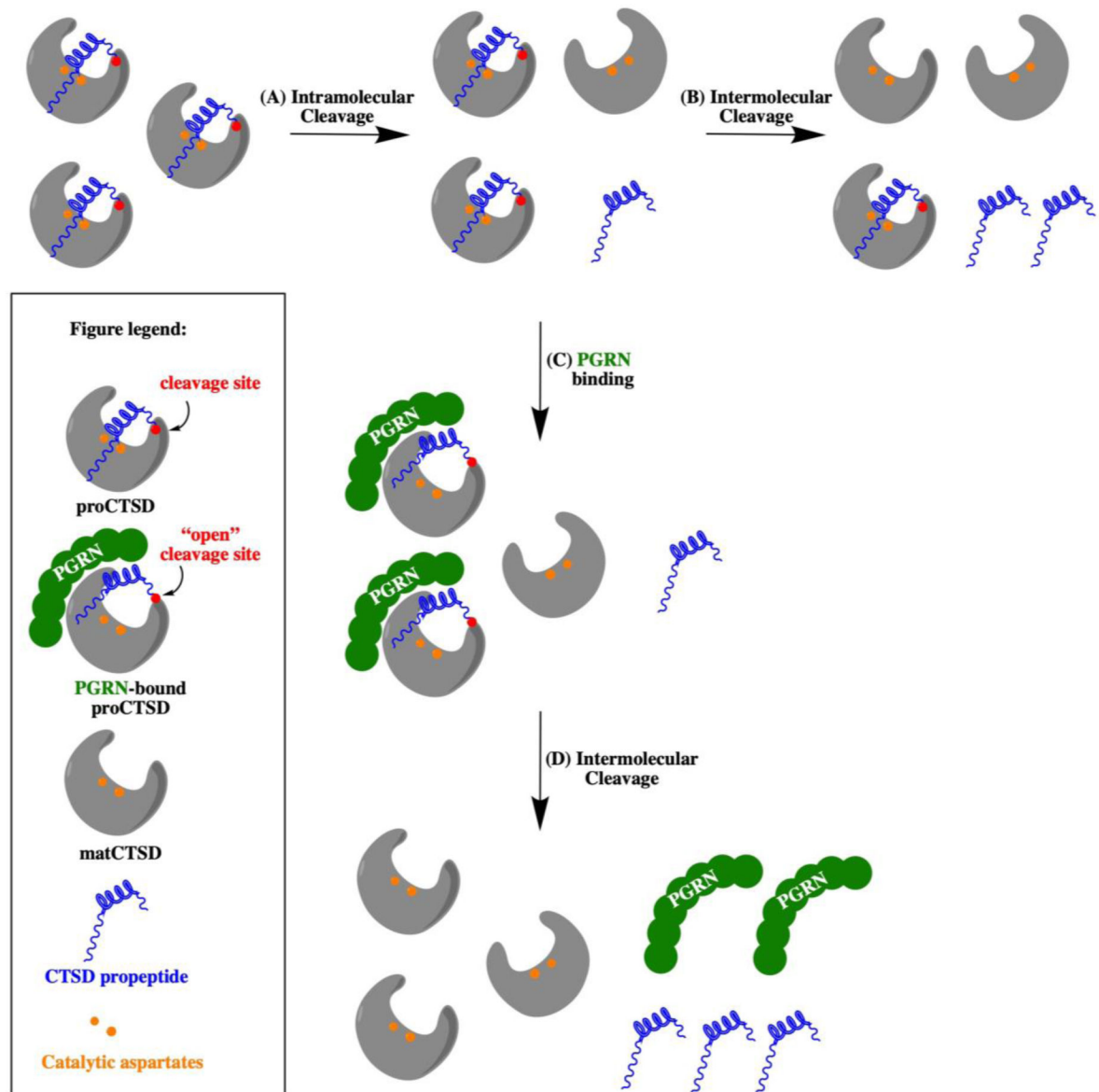


Figure 4. A model for the role of PGRN in the conversion of proCTSD to matCTSD.

(A) ProCTSD undergoes an autocatalytic activation mechanism for the formation of initial matCTSD molecules at a low rate. (B) Once formed, matCTSD can convert proCTSD to matCTSD through an intermolecular cleavage of the propeptide. (C) PGRN binds around the propeptide region of proCTSD to destabilize its interaction with the enzyme catalytic core, (D) facilitating propeptide cleavage by matCTSD. Catalytic aspartyl residues are represented as orange dots, the propeptide in blue and the propeptide cleavage site in red.