

# UCSF

## UC San Francisco Previously Published Works

### Title

A randomized, controlled trial on the effects of almonds on lipoprotein response to a higher carbohydrate, lower fat diet in men and women with abdominal adiposity

### Permalink

<https://escholarship.org/uc/item/7261s3fd>

### Journal

Lipids in Health and Disease, 18(1)

### ISSN

1476-511X

### Authors

Williams, Paul T  
Bergeron, Nathalie  
Chiu, Sally  
[et al.](#)

### Publication Date

2019-12-01

### DOI

10.1186/s12944-019-1025-4

Peer reviewed

RESEARCH

Open Access



# A randomized, controlled trial on the effects of almonds on lipoprotein response to a higher carbohydrate, lower fat diet in men and women with abdominal adiposity

Paul T. Williams<sup>1†</sup>, Nathalie Bergeron<sup>1,2†</sup>, Sally Chiu<sup>1</sup> and Ronald M. Krauss<sup>1\*</sup>

## Abstract

**Background:** Almonds have been shown to lower LDL cholesterol but there is limited information regarding their effects on the dyslipidemia characterized by increased levels of very low density lipoproteins (VLDL) and small, dense low-density lipoprotein (LDL) particles that is associated with abdominal adiposity and high carbohydrate intake. The objective of the present study was to test whether substitution of almonds for other foods attenuates carbohydrate-induced increases in small, dense LDL in individuals with increased abdominal adiposity.

**Methods:** This was a randomized cross-over study of three 3wk diets, separated by 2wk washouts: a higher-carbohydrate (CHO) reference diet (CHO<sub>high</sub>), a higher-CHO diet with isocaloric substitution of 20% kcal (E) from almonds (CHO<sub>high + almonds</sub>), and a lower-CHO reference diet (CHO<sub>low</sub>) in 9 men and 15 women who were overweight or obese. The two CHO<sub>high</sub> diets contained 50% carbohydrate, 15% protein, 35% fat (6% saturated, 21% monounsaturated, 8% polyunsaturated), while the CHO<sub>low</sub> diet contained 25% carbohydrate, 28% protein, 47% fat (8% saturated, 28% monounsaturated, 8% polyunsaturated). Lipoprotein subfraction concentrations were measured by ion mobility.

**Results:** Relative to the CHO<sub>low</sub> diet: 1) the CHO<sub>high + almonds</sub> diet significantly increased small, dense LDLIIIa (mean difference  $\pm$  SE:  $28.6 \pm 10.4$  nmol/L,  $P = 0.008$ ), and reduced LDL-peak diameter ( $-1.7 \pm 0.6$  Å,  $P = 0.008$ ); 2) the CHO<sub>high</sub> diet significantly increased medium-sized LDLIIb ( $24.8 \pm 11.4$  nmol/L,  $P = 0.04$ ) and large VLDL ( $3.7 \pm 1.8$  nmol/L,  $P = 0.05$ ). Relative to CHO<sub>low</sub>, the effects of CHO<sub>high</sub> on LDLIIIa ( $17.7 \pm 10.6$  nmol/L) and LDL-peak diameter ( $-1.1 \pm 0.6$  Å) were consistent with those of CHO<sub>high + almonds</sub>, and the effects of CHO<sub>high + almonds</sub> on LDLIIb ( $21.0 \pm 11.2$  nmol/L) and large VLDL ( $2.8 \pm 1.8$  nmol/L) were consistent with those of CHO<sub>high</sub>, but did not achieve statistical significance ( $P > 0.05$ ). None of the variables examined showed a significant difference between the CHO<sub>high + almonds</sub> and CHO<sub>high</sub> diets ( $P > 0.05$ ).

**Conclusion:** Our analyses provided no evidence that deriving 20% E from almonds significantly modifies increases in levels of small, dense LDL or other plasma lipoprotein changes induced by a higher carbohydrate low saturated fat diet in individuals with increased abdominal adiposity.

**Trial registration:** Clinicaltrials.gov [NCT01792648](https://clinicaltrials.gov/ct2/show/study/NCT01792648).

**Keywords:** Almonds, Triglycerides, Lipids, Lipoprotein size, High carbohydrate

\* Correspondence: [rkrauss@chori.org](mailto:rkrauss@chori.org)

<sup>†</sup>Paul T. Williams and Nathalie Bergeron contributed equally to this work.

<sup>1</sup>Children's Hospital Oakland Research Institute, Oakland, California, USA

Full list of author information is available at the end of the article



## Background

Almonds appear to promote healthy blood lipid and lipoprotein levels [1]. A recent meta-analysis of randomized controlled clinical trials found that almond consumption reduced plasma total cholesterol concentrations by 0.15 mmol/L, LDL-cholesterol concentrations by 0.12 mmol/L, and triglyceride concentrations by 0.07 mmol/L [2]. Moreover, a meta-analysis of prospective epidemiologic studies reported that increased consumption of almonds and other nuts was associated with a substantial reduction in CVD mortality (RR 0.73; 95% CI 0.68–0.78) for the highest vs lowest quintile of intake [3].

Low density lipoproteins include multiple subclasses that range from small, dense, lipid-depleted LDL particles to large, buoyant, cholesterol-enriched LDL particles [4]. Small LDL particles have been shown to be more strongly associated with increased CVD risk than larger LDL [5–7]. High plasma concentrations of small LDL particles and triglyceride, and low HDL-cholesterol concentrations define atherogenic dyslipidemia [8]. This dyslipidemia is one component of metabolic syndrome, which also includes abdominal obesity (defined by increased waist circumference), and/or dysglycemia, and/or high blood pressure.

The optimal dietary macronutrient distribution for improving blood lipids and overall CVD risk may differ across individuals. Replacement of dietary total and saturated fat with carbohydrates effectively lowers total and LDL-cholesterol [9]. However, we have shown that in most healthy individuals, low fat, high carbohydrate diets do not result in overall improvements in lipoprotein profiles and can instead increase plasma triglycerides and small, dense LDL particle concentration [10–12]. Analysis of combined data from several dietary intervention studies, in which carbohydrate and fat intakes varied inversely over a broad range and where protein intake was constant, revealed a strong linear relationship between increasing carbohydrate intake and the atherogenic lipoprotein phenotype defined by high concentrations of small dense LDL particles [9].

A triglyceride-lowering effect of almonds may be especially beneficial to the approximately one-third of Americans with metabolic syndrome [13], particularly if levels of small LDL are also reduced with almond supplementation (triglycerides and small LDL being concordantly related [8]). While increasing evidence supports the cardiometabolic benefit of restricting dietary carbohydrates in individuals with the atherogenic dyslipidemia of metabolic syndrome, for those unwilling to do so, we sought to test whether almond consumption can reduce levels of small and medium LDL particles without the need to restrict dietary carbohydrates to levels below those currently recommended.

## Methods

### Participants and recruitment

The study was conducted between July 2012 and January 2016 at the Cholesterol Research Center (Berkeley, CA). Twenty four men and women were recruited from participants in our previous dietary studies and from the local community through internet and newspaper advertisements, outreach programs, bulk mailing and referrals through collaborations with other academic or corporate institutions. Participants who passed a self-administered web-based pre-screening questionnaire were contacted by a recruiter to review the eligibility requirements and study protocol, and by the study nutritionist to discuss the dietary requirements. Those who agreed to the study protocol received a clinical assessment and blood draw during their initial screening visit. This study was conducted according to the guidelines laid down in the Declaration of Helsinki and the procedures involving human subjects were approved by the Children's Hospital and Research Center Oakland Institutional Review Board. Written informed consent was obtained from all subjects. This clinical trial was registered on ClinicalTrials.gov under the identifier NCT01792648 (<https://clinicaltrials.gov/ct2/show/NCT01792648>).

Our initial intent was to study individuals with atherogenic dyslipidemia of the metabolic syndrome, defined by triglycerides  $\geq 1.69$  mmol/L, HDL-cholesterol  $< 1.03$  mmol/L (men) or  $< 1.29$  mmol/L (women), and with at least one additional characteristic of metabolic syndrome (waist circumference  $> 102$  cm (men) or  $> 88$  cm (women), blood pressure  $\geq 130/\geq 85$  mmHg, or fasting glucose  $\geq 6.1$  mmol/L) [14]. Of the screened participants who had triglycerides  $> 1.69$  mmol/L, only  $\sim 65\%$  had low HDL-cholesterol levels consistent with atherogenic dyslipidemia. Of these, less than 10% had one additional criterion for metabolic syndrome and were willing to take part in the study. Such low prevalence of atherogenic dyslipidemia with features of the metabolic syndrome may be a consequence of our stringent enrollment criteria which excluded individuals taking lipid- or glucose-lowering medications, smokers, and the presence of comorbidities. As such, and after sustained difficulty identifying participants who met these criteria, only abdominal obesity (waist circumference  $> 88$  cm for women and  $> 102$  cm for men) was retained as the selection criterion. Of the 24 participants who completed the study, 2 did not meet the waist criterion but had other characteristics of metabolic syndrome. Exclusion of these two participants from data analysis did not affect any of the parameters measured (lipids, lipoproteins, blood pressure, insulin, glucose, inflammatory markers). Changes to the enrollment criteria were approved by our Institutional Review Board.

Additional screening inclusion criteria included: 1)  $\geq 20$  years; 2) no history of coronary heart disease,

cerebrovascular disease, peripheral vascular disease, bleeding disorder, liver or renal disease, diabetes, lung disease, HIV, or cancer (other than skin cancer) in the last 5 years; 3) not pregnant or breast feeding, and agreeing to use appropriate barrier contraception throughout the study for women of childbearing potential; 4) no current use of hormones or drugs known to affect lipid metabolism or blood pressure; 5) no current use of nicotine products or recreational drugs; 6) willingness to abstain from alcohol or dietary supplements during the study; 7) systolic blood pressure < 160 mmHg and diastolic blood pressure < 95 mmHg; 8) body mass index (BMI)  $\leq$  38 kg/m<sup>2</sup>; 9) total- and LDL-cholesterol < 95th percentile for sex and age, 10) fasting triglycerides > 0.56 mmol/L and < 5.65 mmol/L, 11) fasting blood sugar < 7.0 mmol/L; 12) thyroid stimulating hormone (TSH) within normal range; and 13) weight stable for > 3 months.

#### Experimental design and setting of the study

The diet intervention was carried out on an outpatient basis with careful monitoring of compliance. In a randomized crossover design, each participant consumed the three experimental diets (a higher-carbohydrate (CHO) reference diet (CHO<sub>high</sub>); a higher-CHO diet with almonds (CHO<sub>high + almonds</sub>); and a lower-CHO reference diet (CHO<sub>low</sub>)) for 3 weeks each, separated by 2-week washout periods during which participants consumed their habitual diet (see Additional file 1: Table S1). Diet assignments were kept in sequentially numbered sealed envelopes and assigned to the participant by the clinic staff 1–2 days before starting the intervention. Investigators and laboratory staff were blinded to diet assignment, while clinic staff were not. Participants were not informed of their diet assignment, but due to the nature of the experimental diets, they were likely able to identify them. The three experimental diets consisted of a higher carbohydrate reference diet (CHO<sub>high</sub> diet: 50% E carbohydrate; 15% protein; 35% total fat); an almond-supplemented (20% E) diet with similar macronutrient composition to the higher carbohydrate reference diet (CHO<sub>high + almond</sub> diet: 50% E carbohydrate; 15% protein; 35% total fat); and a lower carbohydrate reference diet (CHO<sub>low</sub>: 25% E carbohydrate; 28% protein; 47% total fat). The CHO<sub>high</sub> diet followed current dietary recommendations that focus on restricting saturated fat and increasing intake of unsaturated fat (Table 1). The CHO<sub>high + almond</sub> diet provided 20% E from almonds in partial replacement for cooking oils and other fat sources (avocados, olives, etc.), with all other foods being otherwise comparable among the standard reference and almond-supplemented diets. Almonds (nonpareil variety) were provided by the Almond Board of California. They were distributed to participants in pre-weighed packets when consumed as raw whole

**Table 1** Composition of experimental diets<sup>a</sup>

|                      | CHO <sub>high + almond</sub> | CHO <sub>high</sub> | CHO <sub>low</sub> |
|----------------------|------------------------------|---------------------|--------------------|
| Carbohydrate, % kcal | 50                           | 50                  | 25                 |
| Protein, % kcal      | 15                           | 15                  | 28                 |
| Total fat, % kcal    | 35                           | 35                  | 47                 |
| SFA                  | 6                            | 6                   | 8                  |
| MUFA                 | 21                           | 21                  | 28                 |
| PUFA                 | 8                            | 8                   | 8                  |
| Cholesterol (mg/d)   | 218                          | 257                 | 265                |
| Fiber (g/d)          | 39                           | 32                  | 31                 |

<sup>a</sup>Calculated values (Nutrition Data System for Research software 2010) for 2500 kcal 3-day menus. MUFA monounsaturated fatty acids, PUFA polyunsaturated fatty acids

unsalted almonds (10% E), with the remaining almonds (10% E) consumed as raw almond meal integrated in customized unit foods (a choice of either roasted pepper almond spread, almond soup or almond cake). For both the CHO<sub>high</sub> and CHO<sub>high + almond</sub> diets, the ratio of starch to total sugars was 60/40, with fruit and dairy products constituting the bulk of total sugars, and added sugars representing 6% of daily calories. The composition of the CHO<sub>low</sub> diet was based on our earlier findings that more extreme carbohydrate restriction, from 54% E to 26% E, is required to significantly reduce LDL-cholesterol as well as small and very small LDL particles, whereas more moderate carbohydrate restriction (39% E) failed to significantly reduce LDL-cholesterol or its component subclasses [15]. For the CHO<sub>low</sub> diet, the ratio of starch to total sugars was 70/30, with fruit constituting the bulk of total sugars and added sugars representing < 3% of daily calories. During the washout period the participants consumed their usual home diets. Comparable amounts of total fat in the standard reference and almond-supplemented diets were achieved primarily by limiting intake of foods rich in unsaturated fat and partially replacing cooking oils with almonds.

Participants were provided ~ 65% daily energy in the form of two frozen entrees (lunch and dinner) and snacks. In addition, participants received detailed dietary instructions, standardized menus, checklists, and shopping lists for home preparation of breakfast and sides for the remaining food items on the menu. Itemized grocery receipts were collected regularly from participants to verify their purchase of perishable foods on their shopping list. Participants were instructed to eat all food items provided/prescribed, and to report any deviations from the protocol. A compliance score (1–5-point scale, where 5 is indicative of high compliance) was assigned to each study participant by the staff nutritionist, based on menu checklists, itemized grocery receipts and information gathered from weekly interactions.

The nutrient composition of the diets was assessed using ProNutra software (Viocare Technologies, Inc.) and the Nutrition Data System for Research (University of Minnesota). Three-day rotating menus were provided at four calorie levels (2000, 2500, 3000, 3500 kcal) for each of the diets, and snacks (200–350 kcal) similar in nutrient composition to the experimental diets were provided for individuals whose calorie needs were intermediate to the 4 calorie levels available. The participants' energy requirements for maintaining stable weight were estimated using the Institute of Medicine equation [16]. During the study, participants were required to maintain their body weight within  $\pm 3\%$  of their initial weight over the course of any consecutive two weeks.

Height and weight were measured during the clinic visits. Participants wore a pedometer to monitor daily steps. Baseline steps per day were measured during the study run-in period and participants were asked to maintain this level of activity throughout the study. Number of steps and other physical activities were recorded in logs and reviewed during weekly diet visits. Fasting blood samples were collected at the end of each dietary period for measurement of plasma lipids, lipoproteins, lipoprotein subfractions, and apolipoproteins B and AI, as well as markers of insulin resistance and inflammation after fasting overnight for 12–14 h. Plasma was separated immediately by centrifugation at 4 °C. Including the screening visit, participants visited the clinic for a total of 7 blood draws and met with the research nutritionist weekly on 14 separate occasions.

#### Laboratory measurements

Plasma triglycerides, total- and HDL-cholesterol were measured by enzymatic endpoint analysis on a clinical chemistry analyzer (Liasys 330) using methodology previously described [17–19]. Triglyceride and cholesterol measurements are standardized through the CDC-NHLBI lipid standardization program. LDL-cholesterol was calculated from the Friedewald equation [20]. ApoB and apoAI were determined by immunoturbidimetric assay using the ITA reagent kit [21, 22]. Plasma particle concentrations of VLDL, intermediate density lipoprotein (IDL), LDL and HDL subfractions were analyzed by gas-phase electrophoresis (i.e., ion mobility [23, 24]). Inter-assay variations of the subfraction measurements were minimized by the inclusion of two in-house controls in each preparatory process and by duplicate analysis (CV < 15%).

Fasting glucose was measured by enzymatic endpoint analysis and fasting insulin by ELISA (EZHI-14K Human Insulin ELISA kit; Millipore, Billerica, MA, USA), with two in-house quality control standards. HOMA-IR was calculated as a marker of insulin resistance (insulin

( $\mu\text{U/mL}$ )  $\times$  glucose (mg/dL)/405) [25]. Plasma samples were assayed for a multi-analyte panel of inflammatory biomarkers (interleukins 1, 6, 8, and 10, resistin, TNF-alpha, PAI-1, leptin, MCP, SAA, lipocalin, and BAFF) using a multiplex immunoassay method through a CLIA certified commercial laboratory (Rules Based Medicine Austin, TX).

#### Statistical analyses

Randomization of the dietary sequence within random size blocks was performed by the statistician assigned to the study using a uniform random-number generator. Treatment, sequence, period and carryover effects were calculated using ANOVA for a cross-over design with the statistical package Stata (version 11, Austin, TX). The primary hypotheses were tested by comparing the effects of the almond-supplemented diet (20% E) with those of the two reference diets that did not contain almond products: one with similar content of carbohydrate, protein, and total, saturated, monounsaturated, and polyunsaturated fat ( $\text{CHO}_{\text{high}}$ ), and the other in which carbohydrate content was substantially reduced by substitution of protein and monounsaturated fat ( $\text{CHO}_{\text{low}}$ ). The  $\text{CHO}_{\text{high}}$  diet was compared to the  $\text{CHO}_{\text{low}}$  diet to ensure that the study design, interventions and duration of the experimental diets and washout periods produced the expected diet-induced changes. The primary hypothesis was that almond supplementation would significantly attenuate the increase in small, dense LDL and apolipoprotein B relative to the  $\text{CHO}_{\text{high}}$  standard reference diet while maintaining or enhancing the reduction in total cholesterol and LDL-cholesterol relative to a  $\text{CHO}_{\text{low}}$  diet. Secondary hypotheses included the effects of these dietary interventions on total: HDL-cholesterol ratio, LDL peak particle size, triglycerides, HDL measures (HDL-cholesterol, HDL subclasses, apoAI), and insulin resistance as estimated by HOMA-IR, as well as a panel of inflammatory biomarkers. The study was initially designed to detect a 5.3 mg/dL difference in LDL-cholesterol reduction between the  $\text{CHO}_{\text{high} + \text{almond}}$  diet and  $\text{CHO}_{\text{high}}$  standard diet in 40 subjects. This detectable difference is smaller than the expected 9.5 mg/dl reduction in LDL-cholesterol for 20% E from almonds calculated in the meta-analysis by Sabate et al. [26]. Interim analyses determined midway through the study that almond supplementation would be highly unlikely to improve LDL-cholesterol levels by the study's completion. Recruitment was therefore terminated at 24 subjects. Specifically, even if the remaining 16 subjects all had LDL-cholesterol differences of 9.5 mg/dL, we still would not have achieved the 5.3 mg/dL



difference between diets which the study was designed to detect.

## Results

Figure 1 shows the details of participant recruitment and enrollment. Table 2 presents the baseline characteristics of the study participants. Fifteen participants (62.5%) had total cholesterol  $\geq 5.17$  mmol/L, 17 (71%) had LDL-cholesterol  $\geq 2.59$  mmol/L, 9 patients (37.5%) had triglycerides  $\geq 1.69$  mmol/L, 7 patients (29.1%) had HDL-cholesterol  $< 1.03$  mmol/L if male and  $< 1.29$  mmol/L if female, and all but 1 patient had at least one screening lipid value outside the desirable range according to the National Cholesterol Education Program-III guidelines. One-third of the participants had fasting plasma glucose  $> 6.1$  mmol/L.

Participants were compliant with the dietary protocol, with nutritionist-rated scores, on a scale of 1 to 5, averaging  $4.5 \pm 0.9$  (SD);  $4.6 \pm 0.8$  and  $4.4 \pm 0.8$ , for the CHO<sub>high</sub>, CHO<sub>high + almond</sub> and CHO<sub>low</sub> diets, respectively.

The overall significance levels for the effects of treatment, period, sequence, and carryforward are presented in Additional file 1: Table S2. Overall treatment effects were significant for diastolic blood pressure ( $P = 0.01$ ) and medium-sized LDLIib ( $P = 0.02$ ). Period and carryforward effects were significant for diastolic blood pressure ( $p = 0.02$  for both), large LDLIIa ( $P = 0.03$  and  $P = 0.02$ , respectively), and large LDLI ( $P = 0.05$  and  $P = 0.02$ , respectively). There were no significant sequence effects.

Table 3 presents the differences in the primary outcome variables after completing each diet (the mean

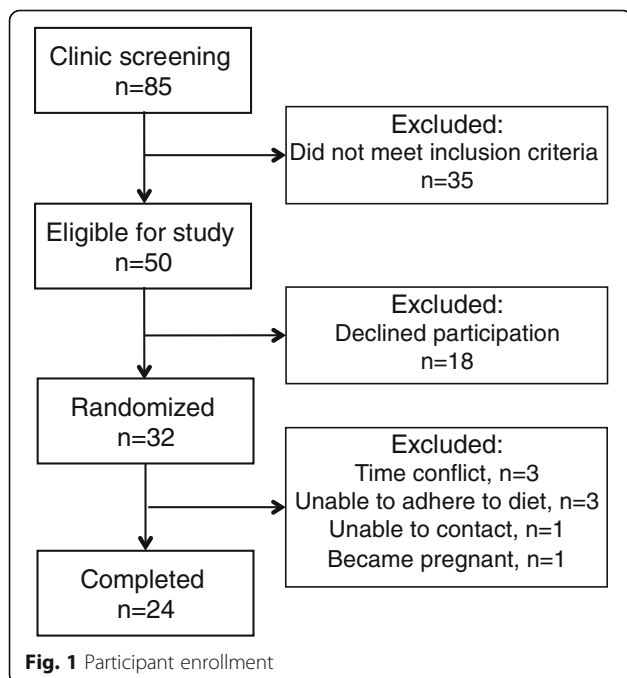
**Table 2** Screening characteristics of the study participants

|                                      | Males (N = 9) |      | Females (N = 15) |      |
|--------------------------------------|---------------|------|------------------|------|
|                                      | Mean          | SD   | Mean             | SD   |
| Age, y                               | 41            | 15   | 52               | 9    |
| Body mass index (kg/m <sup>2</sup> ) | 31.7          | 4.2  | 31.0             | 3.3  |
| Waist circumference (cm)             | 106.8         | 10.0 | 99.4             | 7.9  |
| Systolic blood pressure (mmHg)       | 130           | 13   | 122              | 17   |
| Diastolic blood pressure (mmHg)      | 75            | 8    | 71               | 10   |
| Triglycerides (mmol/L)               | 1.76          | 0.34 | 1.39             | 0.68 |
| Total cholesterol (mmol/L)           | 4.61          | 0.50 | 5.29             | 0.61 |
| LDL-cholesterol (mmol/L)             | 2.79          | 0.43 | 2.92             | 0.60 |
| HDL-cholesterol (mmol/L)             | 1.01          | 0.21 | 1.73             | 0.47 |
| Total-/HDL-cholesterol               | 4.6           | 0.6  | 3.2              | 0.8  |
| Glucose (mmol/L)                     | 5.9           | 0.4  | 5.9              | 0.5  |

levels after each diet are presented in Additional file 1: Table S3). There were no significant weight changes on any of the diets. There were no significant differences in LDL-cholesterol or small to medium LDL subclasses between the CHO<sub>high + almonds</sub> diet and the CHO<sub>high</sub> diet (the primary hypothesis). With 95% confidence, the difference between the CHO<sub>high + almonds</sub> vs. CHO<sub>high</sub> diet was between  $-0.18$  and  $0.23$  mmol/L for LDL-cholesterol and between  $-11.08$  and  $33.07$  nmol/L for LDL IIIa.

With respect to secondary hypotheses, relative to the CHO<sub>low</sub> diet: 1) the CHO<sub>high + almonds</sub> diet significantly increased plasma concentrations of small, dense LDLIIIa (mean difference  $\pm$  SE:  $28.6 \pm 10.4$  nmol/L,  $P = 0.008$ ), and reduced LDL-peak diameter ( $-1.7 \pm 0.6$  Å,  $P = 0.008$ ); and 2) the CHO<sub>high</sub> diet significantly increased plasma concentrations of medium sized LDLIib ( $24.8 \pm 11.4$  nmol/L,  $P = 0.04$ ) and large VLDL ( $3.7 \pm 1.8$  nmol/L,  $P = 0.05$ ). While not achieving statistical significance, the effects of CHO<sub>high</sub> on LDLIIIa ( $17.7 \pm 10.6$  nmol/L,  $P = 0.10$ ) and LDL-peak diameter ( $-1.1 \pm 0.6$  Å,  $P = 0.08$ ) were consistent with those of CHO<sub>high + almonds</sub>, and the effects of CHO<sub>high + almond</sub> on LDLIib ( $21.0 \pm 11.2$  nmol/L,  $P = 0.07$ ) and large VLDL ( $2.8 \pm 1.8$  nmol/L,  $P = 0.13$ ) were consistent with those of CHO<sub>high</sub>, when compared to CHO<sub>low</sub>. None of the lipoprotein variables showed significant differences between the CHO<sub>high + almonds</sub> and CHO<sub>high</sub> diets ( $p > 0.05$ ). The results in Table 3 also show no significant differences among the diets for standard plasma lipid measurements, glucose, insulin, HOMA-IR, apolipoproteins A1 and B, and HDL particle concentrations.

The corresponding analyses for differences in interleukin, resistin, tumor necrosis factor alpha (TNF- $\alpha$ ), plasminogen activator inhibitor-1 (PAI-1), leptin, monocyte chemotactic protein (MCP), serum amyloid A (SAA), lipocalin, B lymphocyte activating factor (BAFF), and



**Table 3** Mean differences in weight, blood pressure, lipoproteins and insulin resistance between diets

|                                      | Mean and SE for differences between diets          |      |   |      |   |      |
|--------------------------------------|--|------|---|------|---|------|
|                                      | CHO <sub>High + almonds</sub> -CHO <sub>High</sub> |      | CHO <sub>High + almonds</sub> -CHO <sub>Low</sub> |      | CHO <sub>High</sub> -CHO <sub>Low</sub> |      |
|                                      | Mean   | SE   | Mean  | SE   | Mean                                    | SE   |
| Body mass (kg)                       | -0.1   | 0.4  | 0.4   | 0.3  | 0.6                                     | 0.4  |
| Body mass index (kg/m <sup>2</sup> ) | -0.1   | 0.1  | 0.1   | 0.1  | 0.2                                     | 0.1  |
| Waist circumference (cm)             | 0.4  | 0.6  | 0.7   | 0.6  | 0.3                                     | 0.6  |
| Systolic BP (mmHg)                   | -1   | 1    | 1   | 1    | 2                                       | 1    |
| Diastolic BP (mmHg)                  | -1   | 1    | 0   | 1    | 1                                       | 1    |
| Triglycerides (mmol/L)               | 0.03   | 0.20 | 0.02  | 0.20 | -0.02                                   | 0.20 |
| Total cholesterol (mmol/L)           | -0.05  | 0.10 | 0.11  | 0.10 | 0.16                                    | 0.10 |
| LDL-cholesterol (mmol/L)             | 0.02   | 0.10 | 0.04  | 0.10 | 0.02                                    | 0.10 |
| HDL-cholesterol (mmol/L)             | -0.08  | 0.06 | -0.01   | 0.06 | 0.07                                    | 0.06 |
| nonHDL-cholesterol (mmol/L)          | 0.02   | 0.12 | 0.11  | 0.11 | 0.09                                    | 0.11 |
| Total-/HDL-cholesterol               | 0.0  | 0.1  | 0.1   | 0.1  | 0.0                                     | 0.1  |
| Glucose (mmol/L)                     | 0.1  | 0.1  | -0.1  | 0.1  | -0.1                                    | 0.1  |
| Insulin (pmol/L)                     | 1.6  | 1.7  | 0.6   | 1.7  | -1.1                                    | 1.7  |
| HOMA-IR                              | 0.4  | 0.5  | 0.13  | 0.46 | -0.30                                   | 0.46 |
| Apolipoprotein A1 (g/L)              | 0.01   | 0.02 | 0.03  | 0.02 | 0.03                                    | 0.02 |
| Apolipoprotein B (g/L)               | -0.05  | 0.04 | -0.01   | 0.04 | 0.04                                    | 0.04 |
| HDL3&2a (nmol/L)                     | 100  | 400  | 569   | 397  | 469                                     | 405  |
| HDL2b (nmol/L)                       | -267   | 327  | -18   | 316  | 249                                     | 323  |
| LDL IVc (nmol/L)                     | -0.6   | 2.6  | 2.5   | 2.6  | 2.5                                     | 2.6  |
| LDL IVb (nmol/L)                     | 3.9  | 5.2  | 7.7   | 5.0  | 3.8                                     | 5.1  |
| LDL IVa (nmol/L)                     | 8.7  | 10.6 | 14.0  | 10.3 | 5.3                                     | 10.3 |
| LDL IIIb (nmol/L)                    | 7.5  | 5.8  | 10.3  | 5.6  | 2.8                                     | 5.76 |
| LDL IIIa (nmol/L)                    | 11.0   | 10.7 | 28.6†   | 10.4 | 17.7                                    | 10.6 |
| LDL IIb (nmol/L)                     | -3.8   | 11.5 | 21.0  | 11.2 | 24.8*                                   | 11.4 |
| LDL IIa (nmol/L)                     | -7.0   | 11.2 | 0.2   | 10.8 | 7.2                                     | 11.1 |
| LDL I (nmol/L)                       | -1.8   | 16.4 | -19.7   | 16.2 | -19.7                                   | 15.2 |
| IDL2 (nmol/L)                        | 5.9  | 10.5 | -5.8  | 10.1 | -11.7                                   | 10.4 |
| IDL1 (nmol/L)                        | 4.2  | 7.3  | 11.3  | 7.0  | 7.0                                     | 7.2  |
| Small VLDL (nmol/L)                  | 1.4  | 3.3  | 3.3   | 3.2  | 1.9                                     | 3.2  |
| Intermediate VLDL (nmol/L)           | -0.7   | 3.9  | 6.3   | 3.8  | 7.0                                     | 3.9  |
| Large VLDL (nmol/L)                  | -0.9   | 1.9  | 3.7   | 1.8  | 3.7*                                    | 1.8  |
| LDL peak diameter (Å)                | -0.6   | 0.6  | -1.7†   | 0.6  | -1.1                                    | 0.6  |

\*  $P \leq 0.05$ ; †  $P \leq 0.01$ 

hepatocyte growth factor (HGF) between diets are presented in Additional file 1: Tables S4-S6. Among these inflammatory measures, only a borderline significant increase in interleukin-1 was observed for the CHO<sub>high + almonds</sub> diet compared to the CHO<sub>low</sub> diet ( $4.6 \pm 2.3$ ,  $P = 0.05$ ).

## Discussion

Numerous studies have shown significant lowering of plasma and LDL-cholesterol levels when almonds are

substituted for carbohydrates in the diet, but little is known of their metabolic effects in the context of higher carbohydrate intake. In the present study we tested whether lipoprotein measures of CVD risk are reduced by almond supplementation in the context of a diet higher in carbohydrate, and with fat and protein content that conform to current guidelines. Our analyses provided no evidence that modifying the standard reference diet (50% E carbohydrates, 15% protein, 35% total fat) with 20% E derived from almonds

significantly lowers plasma LDL-cholesterol or total cholesterol. Moreover, increases in small and midsize LDL concentrations and reductions in LDL-peak diameter were essentially the same for the higher carbohydrate reference diet with or without the inclusion of almond-derived products. Both renditions of the higher carbohydrate diet increased LDLIIIa and LDLIIb plasma concentrations and reduced LDL particle diameter relative to the lower-carbohydrate higher-fat diet.

The present findings differ from that of a recent study in 31 overweight and obese individuals in which diets providing almonds (42.5 g/d) or almonds and dark chocolate (42.5 g/d almonds, plus 43 g/d dark chocolate and 18 g/d cocoa powder) reduced LDL-cholesterol, and lowered large LDL (almond diet) and small LDL (almond plus dark chocolate diet) in comparison to an average American diet [27]. Discrepancies with the present findings may reflect differences in the comparator diet which was low in saturated fat (8% E) and high in fiber (31 g/d) in the present study, but high in saturated fat (13% E) and low in fiber (23 g/d) in the study by Lee et al. [27]. These findings suggest that the high unsaturated fatty acid profile of almonds may contribute, at least in part, to their lipid-lowering effects.

Almonds have been found to promote healthy blood lipid levels, manifest as reductions in total cholesterol, LDL-cholesterol and triglycerides [2]. To date, their effects on plasma lipoprotein concentrations have been investigated in eighteen publications that encompass 27 almond vs. control group comparisons, 17 from parallel trials and 10 from cross-over designs [2]. These included studies in healthy subjects, subjects with high cholesterol, and in diabetic patients. Reductions in total- and LDL-cholesterol are reported to be greatest for almond intake  $\geq 45$  g and in studies of individuals with non-optimal baseline lipid levels as defined by the National Cholesterol Education Program Adult Treatment Panel III guidelines (total cholesterol  $\geq 200$  mg/dl; LDL-cholesterol  $\geq 100$  mg/dl) [28]. In the current study, all but one patient had at least one screening lipid value outside the desirable range according to the National Cholesterol Education Program-III guidelines. Nevertheless we cannot rule out an effect of almond consumption in patients with metabolic syndrome who display a greater degree of atherogenic dyslipidemia.

Several of the studies that contributed to the above meta-analyses of almonds and lipoproteins [2] included significant weight loss, although they were not among the studies showing the most significant decreases in total cholesterol, LDL-cholesterol, or plasma triglyceride concentrations. In the present study, the subjects were closely monitored to maintain stable weight, which could have diminished improvements in LDL and other lipoproteins.

In accordance with the initial protocol, the study was terminated early when interim analyses showed no indication that almond mitigated the increases in small LDL and triglycerides on a high carbohydrate diet. The 3-week interventions were also shorter than other almond feeding studies ( $\geq 4$  weeks) [2]. Nevertheless, a 3-week intervention in 24 subjects was sufficient to produce the expected increases in medium- and small-sized LDL particle concentrations associated with increased carbohydrate intake (Table 3). Significant carry forward effects for diastolic blood pressure, LDL-cholesterol, total cholesterol/HDL-cholesterol, apo B, and larger LDL (Supplemental Table 2) suggest that the design could have benefitted from a longer than 2-week wash-out period, although prior crossover studies had wash-outs of 2 weeks or less.

Limitations of the study include the small sample size, relatively short feeding duration, and significant carryforward effects which may have contributed to the nonsignificant almond effect on the primary endpoints. In the 24 subjects who completed the study, we showed that the LDL-cholesterol difference between the CHO<sub>high</sub> + almonds diet and CHO<sub>high</sub> diet without almonds was  $0.02 \pm 0.20$  mmol/L (mean difference  $\pm$  95% confidence interval) which excludes the 0.25 mmol/L average reduction in LDL-cholesterol for 20% E from almonds reported by Sabate et al. [26]. The LDL-cholesterol difference was nonsignificant when adjusted for carryforward effect ( $P = 0.38$ ) and the carryforward effect did not prevent the expected increase in LDLIIb for the high vs. low fat diet. Addition of the 24 participants studied here to the 837 included in a meta-analysis of almond effects on plasma lipoproteins [2] would be unlikely to alter the conclusion that “consumption of nuts as part of a healthy diet should be encouraged to help in the maintenance of healthy blood lipid levels and to reduce the risk of heart disease”.

## Conclusion

The absence of differences in plasma LDL-cholesterol and small dense LDL (primary endpoints), and other lipoproteins (secondary endpoints) with CHO<sub>high</sub> + almonds vs. CHO<sub>high</sub> diets provides evidence that in men and women with abdominal obesity, almond supplementation in amounts representing 20% E does not attenuate features of atherogenic dyslipidemia induced by higher carbohydrate feeding. Thus, consumption of almonds should not be considered a means of improving this dyslipidemia in the setting of higher CHO intake.

## Additional file

**Additional file 1: Table S1.** Habitual dietary intake of study participants.  
**Table S2.** Statistical analyses of body weight, blood pressure, lipoproteins, and insulin resistance during a crossover study in 24 men



and women. **Table S3.** Mean weight, blood pressure, lipoproteins and insulin resistance at the end of each diet. **Table S4.** Statistical analyses of interleukin, resistin, tumor necrosis factor alpha (TNF- $\alpha$ ), plasminogen activator inhibitor-1 (PAI-1), leptin, monocyte chemoattractant protein (MCP), serum amyloid A (SAA), lipocalin, and B lymphocyte activating factor (BAFF) during a crossover study in 24 men and women. **Table S5.** Mean differences in interleukin, resistin, tumor necrosis factor alpha (TNF- $\alpha$ ), plasminogen activator inhibitor-1 (PAI-1), leptin, monocyte chemoattractant protein (MCP), serum amyloid A (SAA), lipocalin, and B lymphocyte activating factor (BAFF) at the end of each diet. (PDF 377 kb)

### Abbreviations

CHO: Carbohydrate; CHO<sub>high + almonds</sub>: Higher-CHO diet with isocaloric substitution of 20%E from almonds; CHO<sub>high</sub>: Higher-carbohydrate reference diet; CHO<sub>low</sub>: Lower-CHO reference diet; HDL: High density lipoproteins; IDL: Intermediate density lipoproteins; LDL: Low density lipoproteins; MUFA: Monounsaturated fatty acids; PUFA: Polyunsaturated fatty acids; VLDL: Very low density lipoproteins

### Acknowledgements

We thank the staff of the Cholesterol Research Center for their help with conducting the study. We also thank the staff of the Bionutrition Core of the University of California, San Francisco Clinical and Translational Science Institute for their help preparing study unit foods.

### Funding

Almond Board of California. The funding body had no role in the design of the study or the collection, analysis, interpretation of data, and writing of the manuscript.

### Availability of data and materials

The datasets used and/or analysed during the current study are available from the corresponding author on reasonable request.

### Authors' contributions

The authors' contributions were as follows: NB, SC and RMK designed the study. PW, NB and RMK analyzed the data, performed statistical analysis and wrote the manuscript. NB, SC and RMK conducted the human study. PW, NB and RMK had primary responsibility for the final content. All authors reviewed and accepted the final content of the manuscript. All authors read and approved the final manuscript.

### Ethics approval and consent to participate

This study was conducted according to the guidelines laid down in the Declaration of Helsinki and the procedures involving human subjects were approved by the Children's Hospital and Research Center Oakland Institutional Review Board. Written informed consent was obtained from all subjects.

### Consent for publication

Not applicable.

### Competing interests

RMK and NB are recipients of a grant from Dairy Management Inc., but this grant is not for the submitted work; RMK holds licensed patents for ion mobility analyses.

### Publisher's Note

Springer Nature remains neutral with regard to jurisdictional claims in published maps and institutional affiliations.

### Author details

<sup>1</sup>Children's Hospital Oakland Research Institute, Oakland, California, USA.  
<sup>2</sup>College of Pharmacy, Touro University California, Vallejo, California, USA.

Received: 26 November 2018 Accepted: 21 March 2019

Published online: 03 April 2019

### References

- Berryman CE, Preston AG, Karmally W, Deckelbaum RJ, Kris-Etherton PM. Effects of almond consumption on the reduction of LDL-cholesterol: a discussion of potential mechanisms and future research directions. *Nutr Rev.* 2011;69(4):171–85.
- Musa-Veloso K, Paulonis L, Poon T, Lee HY. The effects of almond consumption on fasting blood lipid levels: a systematic review and meta-analysis of randomised controlled trials. *J Nutr Sci.* 2016;5:e34.
- Mayhew AJ, de Souza RJ, Meyre D, Anand SS, Mentz A. A systematic review and meta-analysis of nut consumption and incident risk of CVD and all-cause mortality. *Br J Nutr.* 2016;115(2):212–25.
- Krauss RM, Burke DJ. Identification of multiple subclasses of plasma low density lipoproteins in normal humans. *J Lipid Res.* 1982;23(1):97–104.
- Musunuru K, Orho-Melander M, Caulfield MP, Li S, Salameh WA, Reitz RE, et al. Ion mobility analysis of lipoprotein subfractions identifies three independent axes of cardiovascular risk. *Arterioscler Thromb Vasc Biol.* 2009;29(11):1975–80. PMC2772123.
- Mora S, Szklo M, Otvos JD, Greenland P, Psaty BM, Goff DC Jr, et al. LDL particle subclasses, LDL particle size, and carotid atherosclerosis in the multi-ethnic study of atherosclerosis (MESA). *Atherosclerosis.* 2007;192(1):211–7.
- St-Pierre AC, Cantin B, Dagenais GR, Mauriege P, Bernard PM, Despres JP, et al. Low-density lipoprotein subfractions and the long-term risk of ischemic heart disease in men: 13-year follow-up data from the Quebec cardiovascular study. *Arterioscler Thromb Vasc Biol.* 2005;25(3):553–9.
- Austin MA, King MC, Vranizan KM, Krauss RM. Atherogenic lipoprotein phenotype. A proposed genetic marker for coronary heart disease risk. *Circulation.* 1990;82(2):495–506.
- Siri-Tarino PW, Chiu S, Bergeron N, Krauss RM. Saturated fats versus polyunsaturated fats versus carbohydrates for cardiovascular disease prevention and treatment. *Annu Rev Nutr.* 2015;35:17–43.
- Dreon DM, Fernstrom HA, Miller B, Krauss RM. Low-density lipoprotein subclass patterns and lipoprotein response to a reduced-fat diet in men. *FASEB J.* 1994;8(1):121–6.
- Dreon DM, Fernstrom HA, Williams PT, Krauss RM. LDL subclass patterns and lipoprotein response to a low-fat, high-carbohydrate diet in women. *Arterioscler Thromb Vasc Biol.* 1997;17(4):707–14.
- Dreon DM, Fernstrom HA, Williams PT, Krauss RM. A very low-fat diet is not associated with improved lipoprotein profiles in men with a predominance of large, low-density lipoproteins. *Am J Clin Nutr.* 1999;69(3):411–8.
- Aguilar M, Bhuket T, Torres S, Liu B, Wong RJ. Prevalence of the metabolic syndrome in the United States, 2003–2012. *JAMA.* 2015;313(19):1973–4.
- Expert Panel on Detection E, Treatment of High Blood Cholesterol in A. Executive summary of the third report of the National Cholesterol Education Program (NCEP) expert panel on detection, evaluation, and treatment of high blood cholesterol in adults (adult treatment panel III). *JAMA.* 2001;285(19):2486–97.
- Krauss RM, Blanche PJ, Rawlings RS, Fernstrom HS, Williams PT. Separate effects of reduced carbohydrate intake and weight loss on atherogenic dyslipidemia. *Am J Clin Nutr.* 2006;83(5):1025–31 quiz 205.
- Institute of Medicine of the National Academies. Dietary reference intakes for energy, carbohydrate, Fiber, fat, fatty Acids,Cholesterol, Protein,and amino acids. The: National Academies Press; 2005.
- Allain CC, Poon LS, Chan CS, Richmond W, Fu PC. Enzymatic determination of total serum cholesterol. *Clin Chem.* 1974;20(4):470–5.
- Nagele U, Hagele EO, Sauer G, Wiedemann E, Lehmann P, Wahlefeld AW, et al. Reagent for the enzymatic determination of serum total triglycerides with improved lipolytic efficiency. *J Clin Chem Clin Biochem.* 1984;22(2):165–74.
- Warnick GR, Nguyen T, Albers AA. Comparison of improved precipitation methods for quantification of high-density lipoprotein cholesterol. *Clin Chem.* 1985;31(2):217–22.
- Friedewald WT, Levy RI, Fredrickson DS. Estimation of the concentration of low-density lipoprotein cholesterol in plasma, without use of the preparative ultracentrifuge. *Clin Chem.* 1972;18(6):499–502.
- Rifai N, King ME. Immunoturbidimetric assays of apolipoproteins a, AI, AII, and B in serum. *Clin Chem.* 1986;32(6):957–61.

22. Smith SJ, Cooper GR, Henderson LO, Hannon WH. An international collaborative study on standardization of apolipoproteins A-I and B. Part I. Evaluation of a lyophilized candidate reference and calibration material. *Clin Chem*. 1987;33(12):2240–9.
23. Caulfield MP, Li S, Lee G, Blanche PJ, Salameh WA, Benner WH, et al. Direct determination of lipoprotein particle sizes and concentrations by ion mobility analysis. *Clin Chem*. 2008;54(8):1307–16.
24. Otvos JD, Rudel LL, McConnell JP. Author reply to: concerns regarding lipoprotein particle measurement by ion mobility analysis. *Clin Chem*. 2008; 54(12):2086–7 author reply 8–9.
25. Bravata DM, Wells CK, Concato J, Kernan WN, Brass LM, Gulanski BI. Two measures of insulin sensitivity provided similar information in a U.S. population. *J Clin Epidemiol*. 2004;57(11):1214–7.
26. Sabate J, Oda K, Ros E. Nut consumption and blood lipid levels: a pooled analysis of 25 intervention trials. *Arch Intern Med*. 2010;170(9):821–7.
27. Lee Y, Berryman CE, West SG, Chen CO, Blumberg JB, Lapsley KG, et al. Effects of dark chocolate and almonds on cardiovascular risk factors in overweight and obese individuals: a randomized controlled-feeding trial. *J Am Heart Assoc*. 2017;6(12).
28. Third Report of the National Cholesterol Education Program (NCEP). Expert panel on detection, evaluation, and treatment of high blood cholesterol in adults (adult treatment panel III) final report. *Circulation*. 2002;106(25):3143–421.

**Ready to submit your research? Choose BMC and benefit from:**

- fast, convenient online submission
- thorough peer review by experienced researchers in your field
- rapid publication on acceptance
- support for research data, including large and complex data types
- gold Open Access which fosters wider collaboration and increased citations
- maximum visibility for your research: over 100M website views per year

**At BMC, research is always in progress.**

Learn more [biomedcentral.com/submissions](https://biomedcentral.com/submissions)

