

UCSF

UC San Francisco Previously Published Works

Title

A lung rescue team improves survival in obesity with acute respiratory distress syndrome

Permalink

<https://escholarship.org/uc/item/73j4j1tk>

Journal

Critical Care, 24(1)

ISSN

1364-8535

Authors

Florio, Gaetano

Ferrari, Matteo

Bittner, Edward A

et al.

Publication Date

2020-12-01

DOI

10.1186/s13054-019-2709-x

Copyright Information

This work is made available under the terms of a Creative Commons Attribution License, available at <https://creativecommons.org/licenses/by/4.0/>


Peer reviewed

RESEARCH

Open Access



A lung rescue team improves survival in obesity with acute respiratory distress syndrome

Gaetano Florio¹, Matteo Ferrari¹, Edward A. Bittner¹, Roberta De Santis Santiago¹, Massimiliano Pirrone¹, Jacopo Fumagalli¹, Maddalena Teggia Droghi¹, Cristina Mietto¹, Riccardo Pinciroli¹, Sheri Berg¹, Aranya Bagchi¹, Kenneth Shelton¹, Alexander Kuo¹, Yvonne Lai¹, Abraham Sonny¹, Peggy Lai², Kathryn Hibbert², Jean Kwo¹, Richard M. Pino¹, Jeanine Wiener-Kronish¹, Marcelo B. P. Amato³, Pankaj Arora⁴, Robert M. Kacmarek^{1,5}, Lorenzo Berra^{1*} , For the investigators of the lung rescue team

Abstract

Background: Limited data exist regarding ventilation in patients with class III obesity [body mass index (BMI) > 40 kg/m²] and acute respiratory distress syndrome (ARDS). The aim of the present study was to determine whether an individualized titration of mechanical ventilation according to cardiopulmonary physiology reduces the mortality in patients with class III obesity and ARDS.

Methods: In this retrospective study, we enrolled adults admitted to the ICU from 2012 to 2017 who had class III obesity and ARDS and received mechanical ventilation for > 48 h. Enrolled patients were divided in two cohorts: one cohort (2012–2014) had ventilator settings determined by the ARDSnet table for lower positive end-expiratory pressure/higher inspiratory fraction of oxygen (*standard protocol-based cohort*); the other cohort (2015–2017) had ventilator settings determined by an individualized protocol established by a lung rescue team (*lung rescue team cohort*). The lung rescue team used lung recruitment maneuvers, esophageal manometry, and hemodynamic monitoring.

Results: The standard protocol-based cohort included 70 patients (BMI = 49 ± 9 kg/m²), and the lung rescue team cohort included 50 patients (BMI = 54 ± 13 kg/m²). Patients in the standard protocol-based cohort compared to lung rescue team cohort had almost double the risk of dying at 28 days [31% versus 16%, *P* = 0.012; hazard ratio (HR) 0.32; 95% confidence interval (CI95%) 0.13–0.78] and 3 months (41% versus 22%, *P* = 0.006; HR 0.35; CI95% 0.16–0.74), and this effect persisted at 6 months and 1 year (incidence of death unchanged 41% versus 22%, *P* = 0.006; HR 0.35; CI95% 0.16–0.74).

Conclusion: Individualized titration of mechanical ventilation by a lung rescue team was associated with decreased mortality compared to use of an ARDSnet table.

Keywords: ARDS, Obesity, Mechanical ventilation, Cardiopulmonary physiology, Mortality

* Correspondence: lberra@mgh.harvard.edu

¹Department of Anesthesia, Critical Care and Pain Medicine, Massachusetts General Hospital, Harvard Medical School, 55 Fruit Street, Boston, MA 02141, USA

Full list of author information is available at the end of the article



Background

Approximately 40% of all adults in the USA are obese [1]. The prevalence of the most severe form of obesity [class III obesity: body mass index (BMI) > 40 kg/m²] is approaching 10% (> 30 million Americans) [2]. Little has been done in the intensive care unit (ICU) to study this healthcare epidemic, which is associated with overall reduced life expectancy [3]. A common cause of ICU admission for patients with class III obesity is acute respiratory distress syndrome (ARDS) [4], often leading to dependency on mechanical ventilation, high incidence of tracheostomy [5], severe kidney failure [6], multiple organ failure, and significantly higher all-cause mortality [7, 8].

Appropriate protective mechanical ventilation is the cornerstone for treatment of patients with ARDS [9–13]. To improve lung healing and survival, several ventilation strategies have been tested with different degrees of success. Positive end-expiratory pressure (PEEP) and lung recruitment maneuvers (LRM) are two ventilation strategies aimed to decrease overstretching of lung parenchyma and cyclic opening and closing of small airways and alveoli (i.e., barotrauma, volutrauma, and atelectrauma). Obesity has been an exclusion criterion in most of the major ARDS trials testing different modalities to titrate mechanical ventilation [9, 11, 14, 15]. Despite a lack of evidence of benefit to patients with obesity, most clinicians use the ARDSnet PEEP/inspiratory fraction of oxygen (F_IO₂) protocol [9, 11] to titrate mechanical ventilation in all ARDS patients.

Our recent studies confirm that pleural pressure in patients with class III obesity is higher than in patients with lean body habitus [16–19]. Increased pleural pressure significantly reduces lung volume (especially functional residual capacity) and leads to formation of atelectasis, which is associated with shunting and hypoxemia [17–19]. Patients with obesity often have highly recruitable lungs, and common PEEP levels used in the ICU are not sufficient to prevent atelectasis [17–19]. As a result, in this population, only an individualized physiological titration of PEEP with a LRM is effective to counter the detrimental effects of increased pleural pressure, resulting in lung re-expansion [17–19].

We tested the hypothesis that implementation of a specialized team (the lung rescue team) exclusively assessing patients with both obesity and ARDS would reduce mortality due to individualized physiologic treatment of such unique patients. To provide individualized titration of mechanical ventilation in patients with class III obesity, the Massachusetts General Hospital (MGH) Respiratory Care Service together with the Critical Care Group implemented a lung rescue team in 2014.

Methods

Patients and measurements

The Institutional Review Board approved the study (MGH-IRB-2017P000544) with waiver of patient consent.

Adult patients (≥ 18 years of age) with the following entry criteria were enrolled: (I) class III obesity (BMI > 40 kg/m²), (II) diagnosis of ARDS [4], (III) mechanical ventilation for > 48 h, and (IV) admission to MGH surgical or medical ICU from January 1, 2012, to December 31, 2017. None of these patients participated in any MGH ARDS ongoing interventional trials.

This retrospective study compared two cohorts of patients. During 2012–2014, mechanical ventilation settings of the first cohort of patients (standard protocol-based cohort) was titrated according to ARDSnet PEEP/F_IO₂ guidelines [9, 11]. During 2015–2017, mechanical ventilation of the second cohort of patients (lung rescue team cohort) was treated by the lung rescue team.

During ICU admission and the first 4 days of mechanical ventilation, patient characteristics together with cardiopulmonary and hemodynamic were recorded. Patients' outcomes up to 1-year follow-up were also recorded.

Interventions

All ARDS patients at MGH were ventilated in volume-controlled or pressure-controlled ventilation mode, with tidal volumes of 4–8 mL/kg of predicted body weight while maintaining plateau pressure of < 28 cmH₂O and respiratory rate titrated to maintain 88%–95% SpO₂ and permissive hypercapnia with pH > 7.25 and PaCO₂ < 60 mmHg [20, 21]. To prevent ventilation asynchrony and for ARDS treatment, patients were paralyzed with cisatracurium to suppress train-of-four to 0 to 1 [22].

For the standard protocol-based cohort (Fig. 1, panel 1), ventilation of patients with class III obesity was managed using ARDSnet PEEP/F_IO₂ tables [11]. Due to the absence of benefit associated with the higher PEEP/lower F_IO₂ table [11], the lower PEEP/higher F_IO₂ table was used.

For the lung rescue team cohort (Fig. 1, panel 2), ventilation was started based on the lower PEEP/higher F_IO₂ table. Subsequently, ventilation was titrated by the lung rescue team, composed of a critical care physician, two critical care fellows, and an ICU respiratory therapist. The lung rescue team represents the clinical evolution of the research activity performed by our group. In recent years, our group extensively investigated ventilatory management of patients with obesity and acute respiratory failure, and these studies often led to a dramatic improvement in the levels of hypoxemia. Consequently, the ICUs of MGH started to request a respiratory consult and a clinical team was implemented. The lung rescue team evaluated patients within the first day

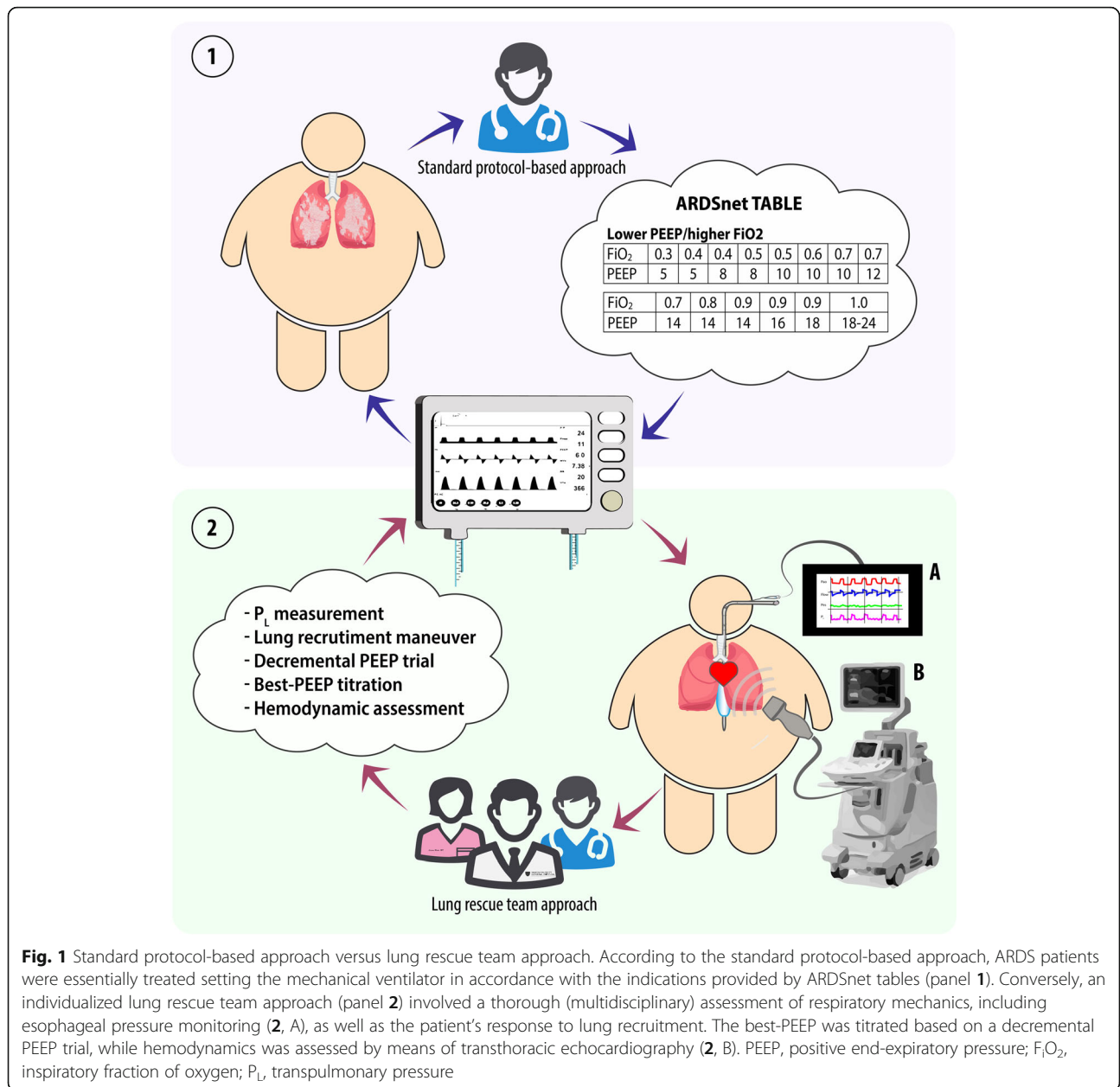


Fig. 1 Standard protocol-based approach versus lung rescue team approach. According to the standard protocol-based approach, ARDS patients were essentially treated setting the mechanical ventilator in accordance with the indications provided by ARDSnet tables (panel 1). Conversely, an individualized lung rescue team approach (panel 2) involved a thorough (multidisciplinary) assessment of respiratory mechanics, including esophageal pressure monitoring (2, A), as well as the patient’s response to lung recruitment. The best-PEEP was titrated based on a decremental PEEP trial, while hemodynamics was assessed by means of transthoracic echocardiography (2, B). PEEP, positive end-expiratory pressure; FiO₂, inspiratory fraction of oxygen; P_L, transpulmonary pressure

from the beginning of mechanical ventilation. The clinical decisions of the lung rescue team were based on multiple measurements of respiratory mechanics and hemodynamics; mechanical ventilation was accurately titrated using LRM and choosing the correct value of PEEP matching information from decremental PEEP trial, end-expiratory transpulmonary pressure measurements, and the use of electrical impedance tomography. Hemodynamics was carefully analyzed through standard hemodynamic parameters and right heart echocardiography with the aim to intensively study the interaction between lung and heart/vascular function [23].

In both cohorts of patients, the weaning process from mechanical ventilation was performed according to the recommendations of the 2005 International Consensus Conference [24].

Statistical analysis

Baseline characteristics, respiratory mechanics, and hemodynamics during the first 4 days of ICU admission and outcomes were compared between the two groups with two-sample parametric or nonparametric tests as appropriate. Normality of distribution was assessed using the Shapiro-Wilk test. T-test/Wilcoxon rank-sum and chi-square test were used for group

comparison among continuous/categorical and categorical/categorical variables, respectively.

The primary outcome was mortality at 28 days and was decided a priori during the study design process. The effect of lung rescue ventilation strategy on mortality up to 1-year follow-up was assessed using Kaplan-Meier curves, and hazard ratio was calculated using the Cox proportional hazard model. Kaplan-Meier analysis was used to examine unadjusted differences in survival in the two groups. The Cox proportional hazard model was used to examine differences in survival after adjusting for predetermined potential confounders (BMI, age, APACHE, PaO₂/FiO₂ ratio). A two-sided *P* value of <0.05 was considered statistically significant. Data from all patients admitted to the ICU that met inclusion criteria were collected and included in the analysis; an a priori sample size calculation was not performed. All statistical analysis and all graphs were performed using STATA version 13 (STATA Corp., USA).

Please see supplementary materials for details regarding patient screening, recordings, measurements, and interventions.

Results

Patient characteristics

From 2012 to 2014, 70 ARDS patients (BMI = 49 ± 9 kg/m²) were managed according to a standard protocol-based approach. From 2015 to 2017, 50 ARDS patients (BMI = 54 ± 13 kg/m²) were managed by the lung rescue team. Upon ICU admission, patients in the first cohort were slightly older (57 ± 13 years versus 52 ± 14 years, *P* = 0.03). No other baseline comorbidities differed between the groups (Table 1).

Ventilation settings

At ICU admission, P_aO₂/F_iO₂ was higher in the standard protocol-based cohort (PaO₂/FiO₂ ratio of 197 mmHg [CI95% 177–217], compared to 154 mmHg [CI95% 127–179] in the lung rescue group, *P* = 0.003) (Table 2 and Additional file 1: Table S1). No other differences were observed in baseline lung mechanics between the two cohorts (Table 2 and Additional file 1: Table S1).

Patients in the standard protocol-based cohort were all ventilated according to the ARDSnet lower PEEP/higher F_iO₂ table [11] for >48 h (average 198 ± 278 h). PEEP levels and respiratory mechanics did not change during the first 4 days of ventilation. By day 4, only 10 patients (14%) had improved oxygenation to >300 mmHg (Table 2 and Additional file 1: Table S1).

Upon admission to the ICU, patients in the lung rescue group were also initially ventilated according to the ARDSnet lower PEEP/higher F_iO₂ table [11]. Within 24 h after initiation of mechanical ventilation, the lung rescue team performed esophageal manometry, LRM, and a

decremental PEEP trial. As a result of the lung rescue approach, PEEP increased an average of 10 cmH₂O (9 ± 2 cmH₂O on day 1 versus 19 ± 4 cmH₂O on day 2, *P* < 0.001) and end-expiratory transpulmonary pressure passed from -6.3 ± 3.7 cmH₂O to +1.7 ± 3.2 cmH₂O (*P* < 0.001). All patients in the lung rescue team cohort were ventilated for >48 h (299 ± 322 h). Comparison of time of ventilation, measured as ventilation-free days, did not reveal a difference between the two cohorts (Table 3).

In contrast to the standard protocol-based cohort, the lung rescue team cohort showed a remarkable improvement in respiratory mechanics and oxygenation throughout the first 4 days of ventilation. Driving pressure decreased an average of 3.4 cmH₂O, while compliance of the respiratory system improved an average of 12 mL/cmH₂O, suggesting considerable lung recruitment. This result was also documented by improved PaO₂/FiO₂ ratio from 153 ± 88 mmHg at admission to 282 ± 102 mmHg on day 2, after titration of PEEP (Table 2). On day 4, 28 patients (56%) improved oxygenation to >300 mmHg.

Hemodynamics

A large proportion of patients in both groups (70% of patients in the standard protocol-based cohort and 76% of patients in lung rescue team cohort) presented in shock, requiring similar intravenous doses of inotropic and vasopressor agents (16, CI95% 11–21 in the standard protocol-based cohort versus 15, CI95% 9–21 in the lung rescue team cohort, *P* = 0.79). In the first 4 days of ICU admission, the average dose of required inotropics and vasopressors in the standard protocol-based cohort did not substantially change (Table 2). In the lung rescue team cohort, despite the PEEP increase of 10 cmH₂O, average VIS decreased during the first 4 days of ICU admission. By day 4, the proportion of patients requiring vasopressors decreased to 30%, requiring lower doses of intravenous inotropic agents and vasopressors (Table 2).

To monitor right heart function of hemodynamically unstable patients, the lung rescue team performed bedside transthoracic echocardiography (TTE) before and after titration of ventilation. Both tricuspid annular plane systolic excursion (TAPSE) and peak systolic velocity (*S'*) were unchanged by LRM and PEEP titration (TAPSE measured in 27 patients 2.3 cm [CI95% 2.10–2.43] before versus 2.2 cm [CI95% 2.05–2.34] after PEEP setting, *P* = 0.51; *S'*: 15 cm/s [CI95% 13.22–16.88] before versus 14 cm/s [CI95% 12.29–15.84] after PEEP setting, *P* = 0.40), suggesting no adverse impact on right heart function.

Mortality and in-hospital outcomes

Patients in the standard protocol-based cohort compared to those in the lung rescue team had almost double the

Table 1 Baseline characteristics of patients

	Standard protocol-based cohort	Lung rescue team cohort	<i>P</i>
Patients, <i>n</i> (%)	70 (100)	50 (100)	
Women, <i>n</i> (%)	37 (53)	23 (46)	0.46
Caucasian, <i>n</i> (%)	64 (91)	48 (96)	0.32
Others, <i>n</i> (%)	6 (9)	2 (4)	
Age, years, mean (SD)	57 (13)	52 (14)	0.03
BMI, kg/m ² , mean (SD)	49 (9)	54 (13)	0.11
Cause of admission, <i>n</i> (%)			
Postoperative respiratory failure after elective surgery	14 (20)	11 (22)	0.79
Postoperative respiratory failure after urgent surgery	17 (24)	11 (22)	0.77
Medical	39 (56)	28 (56)	0.85
Pneumonia	12 (17)	9 (18)	0.96
Septic shock	14 (20)	12 (24)	0.62
Others	13 (18)	7 (14)	0.56
APACHE II, mean (SD)	19 (7)	19 (8)	0.82
SOFA, mean (SD)	9.9 (3.6)	9.8 (3.5)	0.62
Comorbidities, <i>n</i> (%)			
Diabetes	29 (41)	21 (42)	0.95
Oral agents	14 (20)	10 (20)	0.96
Oral agents + insulin	15 (21)	11 (22)	0.96
Hypertension	48 (68)	34 (68)	0.95
Asthma	9 (13)	5 (12)	0.89
COPD	20 (28)	14 (28)	0.94
OSA	18 (25)	14 (28)	0.78
Smoking	24 (34)	21 (42)	0.39
Actual	12 (17)	9 (18)	0.90
Former	12 (17)	12 (24)	0.35
CHF	15 (21)	9 (18)	0.64
Stroke, TIA	4 (6)	2 (4)	0.67
CKD	11 (16)	6 (12)	0.56
PVD	7 (10)	6 (12)	0.73
AF	12 (17)	9 (18)	0.90
Cancer	5 (7)	7 (14)	0.22

Abbreviation: *SD* standard deviation, *BMI* body mass index, *APACHE* acute physiologic assessment and chronic health evaluation scoring, *SOFA* sequential organ failure assessment, *COPD* chronic obstructive pulmonary disease, *OSA* obstructive sleep apnea, *CHF* congestive heart failure, *TIA* transient ischemic attack, *CKD* chronic kidney disease, *PVD* peripheral vascular disease, *AF* atrial fibrillation (chronic atrial fibrillation on anticoagulant therapy)

risk of dying from an ARDS diagnosis at 28 days and 3 months (Fig. 2 and Table 3).

No deaths occurred in either group after 3 months, and the increased risk of mortality persisted in the standard protocol-based cohort at 6 months and at 1 year after admission. The mortality difference between cohorts was even greater when corrected for potential confounders (BMI, APACHE, age, PaO₂/FiO₂ ratio), suggesting that a lung rescue approach is a strong independent variable of improved survival (Fig. 2 and Table 3).

The main cause of death was multi-organ failure in the standard protocol-based cohort (93%; Additional file 1: Table S2) and lung rescue team cohort (64%; Additional file 1: Table S3). In the remaining cases, care was withdrawn in the standard protocol-based cohort for severe and diffuse ischemic brain injury (two patients, 7%) and in the lung rescue team cohort for advanced metastatic cancer (four patients, 36%). All treatments were withdrawn based on patient's and proxy's wishes, with the exception of palliative and comfort care.

Table 2 Ventilation settings and hemodynamics—standard protocol-based cohort and lung rescue team cohort

Variable	Group	Day 1	Day 2	Day 3	Day 4
PEEP, cmH ₂ O, mean (CI 95%)	Standard protocol-based cohort	9 (8–10)	9 (8–10)	9 (8–10)	9 (8–10)
	Lung rescue team cohort	9 (9–10)	19 (18–20)	20 (18–21)	20 (18–21)
TV/IBW, mL/kg, mean (CI 95%)	Standard protocol-based cohort	6.4 (6.2–6.6)	6.5 (6.3–6.8)	6.4 (6.1–6.6)	6.5 (6.3–6.7)
	Lung rescue team cohort	6.2 (5.9–6.5)	6.2 (5.9–6.5)	6.2 (5.9–6.5)	6.2 (5.9–6.6)
DP ^a , cmH ₂ O, mean (CI 95%)	Standard protocol-based cohort	13 (12.1–14.1)	13 (12.2–14.8)	13 (11.9–15.2)	13 (11.8–15.1)
	Lung rescue team cohort	13 (12.0–14.3)	10 (8.7–10.4)	9 (8.2–9.9)	8 (7.3–9.6)
C _{RS} ^b , mL/cmH ₂ O, mean (CI 95%)	Standard protocol-based cohort	35 (31–38)	33 (27–39)	36 (27–46)	33 (27–40)
	Lung rescue team cohort	33 (29.7–37.1)	45 (41–49)	48 (41–56)	52 (42–62)
P _a /F _i O ₂ , mmHg, mean (CI 95%)	Standard protocol-based cohort	197 (177–217)	224 (203–245)	220 (199–242)	218 (194–242)
	Lung rescue team cohort	154 (127–179)	282 (252–312)	284 (256–312)	276 (243–309)
RIV No. (%)	Standard protocol-based cohort	49/70 (70)	51/70 (73)	41/70 (58)	39/70 (56)
	Lung rescue team cohort	38/50 (76)	32/50 (64)	20/50 (40)	15/50 (30)
V _I S, mean (CI 95%)	Standard protocol-based cohort	16 (11–21)	15 (10–20)	14 (9–20)	15 (6–24)
	Lung rescue team cohort	15 (9–21)	9 (5–12)	5 (2–8)	4 (1–8)

Abbreviations: PEEP positive end-expiratory pressure, CI confidence interval, TV tidal volume, IBW ideal body weight, DP driving pressure, CFS compliance of respiratory system, RIV requirement for inotropics and vasopressors, V_IS vasoactive-inotropic score

^aDriving pressure is difference between plateau pressure (measured at the end of an end-inspiratory pause) and total positive end-expiratory pressure (measured at the end of an end-expiratory pause)

^bRespiratory system compliance is the ratio of tidal volume to driving pressure

Information at days 3 and 4 were available for more than 80% of patients and statistics were performed only on available data

Table 3 Mortality, cause of death, and in-hospital outcomes

	Standard protocol-based cohort (N = 70)	Lung rescue team cohort (N = 50)	P ^a	Hazard ratio (CI 95%) ^a
ICU mortality, n (%)	24/70 (34)	9/50 (18)	0.004	0.29 (0.12–0.67)
Hospital mortality, n (%)	29/70 (41)	9/50 (18)	< 0.001	0.22 (0.10–0.51)
28-day mortality, n (%)	22/70 (31)	8/50 (16)	0.001	0.31 (0.13–0.78)
3-month mortality, n (%)	29/70 (41)	11/50 (22)	0.006	0.35 (0.16–0.74)
6-month mortality, n (%)	29/70 (41)	11/50 (22)	0.006	0.35 (0.16–0.74)
1-year mortality, n (%)	29/70 (41)	11/50 (22)	0.006	0.35 (0.16–0.74)
Cause of death				
Multi-organ failure	27/29	7/11		
Brain injury/advanced cancer	2/29	4/11		
ICU length of stay, days, mean (CI 95%)	13 (9–16)	17 (14–20)	< 0.001	
Days not in ICU at day 28, days, mean (CI 95%) ^b	12 (9–14)	11 (8–13)	0.413	
Hospital length of stay, days, mean (CI 95%)	19 (15–23)	28 (23–33)	< 0.001	
Days not in hospital at day 28, days, mean (CI 95%) ^b	7 (5–9)	5 (3–7)	0.121	
Ventilation-free days, days, mean (CI 95%) ^b	14 (11–16)	15 (12–18)	0.859	
Reintubation, n (%)	12/70 (17)	8/50 (16)	0.868	
Tracheostomy, n (%)	11/70 (16)	14/50 (28)	0.061	
AKI, n (%)	37/70 (52)	26/50 (54)	0.902	
RRT, n (%)	16/70 (23)	12/50 (24)	0.884	

Abbreviations: CI confidence interval, ICU intensive care unit, AKI acute kidney injury, RRT renal replacement therapy

^aP values and hazard ratios for mortality calculated after correction for common ICU confounding factors (APACHE, age, BMI, P_aO₂/F_iO₂)

^bIf in-hospital death occurred before day 29, the ventilation-free days, the days not in ICU at day 28, and the days not in hospital at day 28 were considered to be zero

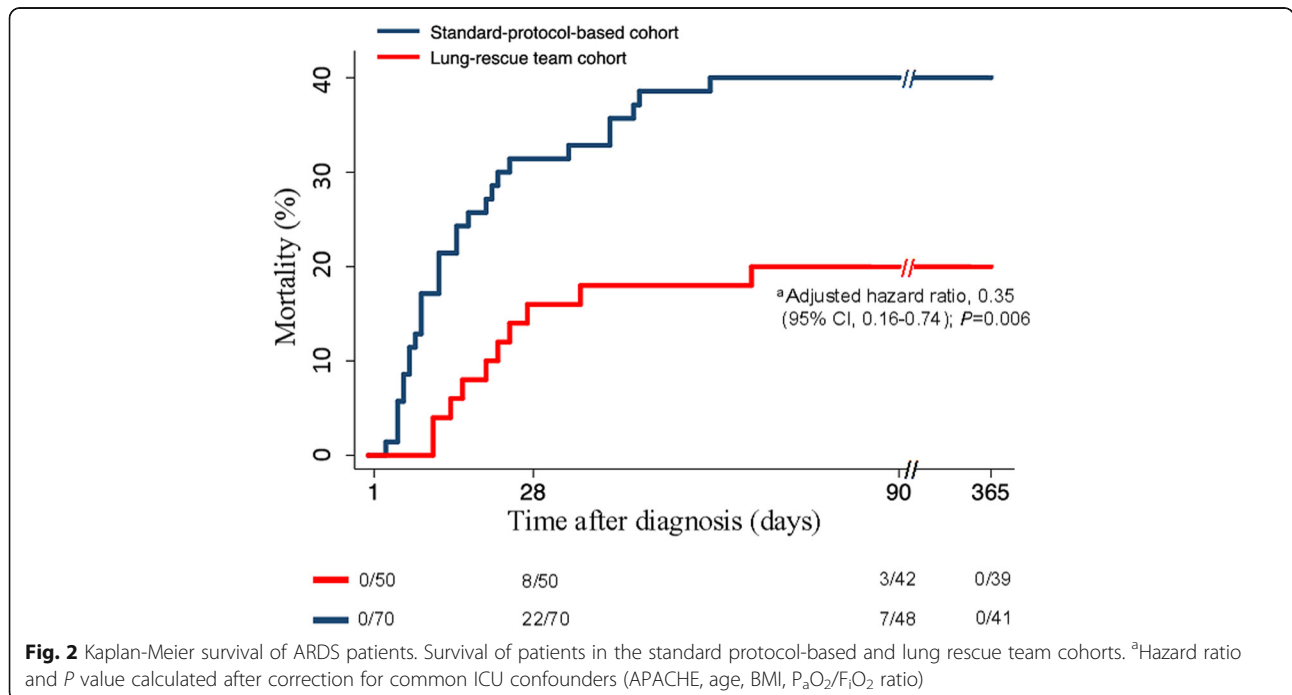


Fig. 2 Kaplan-Meier survival of ARDS patients. Survival of patients in the standard protocol-based and lung rescue team cohorts. ^aHazard ratio and P value calculated after correction for common ICU confounders (APACHE, age, BMI, P_aO₂/F_iO₂ ratio)

To evaluate the effects of time on mortality of patients with obesity and ARDS, the two cohorts of patients were subdivided in two further subgroups of equal number of patients. The standard protocol-based cohort mortality was 40% in the first 35 patients (2012–2013) and 42% in the second 35 patients (2013–2014) indicating that mortality did not change over the 3 years. The mortality in the first 25 patients of the lung rescue team cohort was 28% (2015–2016) and 16% in the remaining 25 patients (2016–2017), showing a decrease compared to the standard protocol-based cohort.

When mortality was accounted for, days not in hospital at day 28 [25] and days not in ICU at day 28 [25] were similar in the two groups. The increased ICU length of stay and hospital length of stay in the lung rescue team cohort have to be ascribed exclusively to improved survival (Table 3). No differences were observed in the incidence of reintubation, tracheostomy, and renal acute injury between cohorts.

Safety of procedures

No safety concerns were recorded associated with the lung rescue procedures (please see Additional file 1: Supplementary Materials).

Discussion

Major findings

The implementation of a lung rescue team to individually titrate mechanical ventilation according to physiological parameters in patients with class III obesity and ARDS was associated with significantly decreased mortality at 28 days and at 3 months compared with use of the ARDSnet lower PEEP/higher F_iO_2 table. The mortality difference persisted at 1-year follow-up.

The largest epidemiologic study on ARDS was conducted in 2016 and reported an overall ICU mortality of 35.3% (95%CI 33.3%–37.2%) and hospital mortality of 40.0% (95CI 38.1%–42.1%) [7], similar to what we observed in the standard protocol-based cohort treated according to the ARDSnet protocol. In 2019, two large randomized US trials in ARDS reported a mortality rate at 1 year of 44% [26] and at 90 days of 42% [25]. MGH was part of those two studies. Thus, the improved survival observed in the lung rescue group might be attributed to a prompt and sustained improvement in cardiopulmonary physiology following the individualized titration of mechanical ventilation.

In the USA, the largest trial in ARDS patients that systematically changed the common practice of mechanical ventilation was the original ARDSnet trial [9], a study sponsored by NIH and completed in 2000. This trial developed simple and clear mechanical ventilation protocols (ARDSnet tables) to guide clinicians to deliver mechanical ventilation for ARDS patients [11]. However,

obesity was a criterion of exclusion from the trial and for many subsequent ARDS trials focused on best practice of mechanical ventilation [9, 11, 14, 15, 27].

Despite the high prevalence of class III obesity [2] in the USA and increasing health issues related to this condition, to date no study has primarily evaluated this population with ARDS. The PROBESE study [28] showed no difference between two protocolized ventilator strategies (low PEEP, [4 cmH₂O] versus lung recruitment maneuvers and high PEEP [12 cmH₂O]) during general anesthesia for surgery in patients with obesity and without ARDS. To our knowledge, our observational study is the first to investigate the effects on survival of an alternative individualized and physiologically driven approach of care, rather than use of ARDSnet protocols in patients with class III obesity and ARDS. In the absence of definitive guidance, over the past years we have meticulously studied pulmonary physiology and hemodynamics in mechanically ventilated patients with obesity [17–19].

The question in ARDS patients is whether non-functional atelectatic lung can be re-opened without subjecting the normal lung to further injury.

ARDS patients are often said to have a “baby lung,” a reduced lung volume but with a highly variable amount of recruitable lung parenchyma [29]. The increased pleural pressure in patients with class III obesity [16–19] causes atelectasis of >40% of lung parenchyma. Atelectasis in patients with class III obesity can easily be recruited [17, 19]. Our study intervention sought to maximize recruitment of atelectatic lung. This occurred, as shown by the decrease in driving pressure in the lung rescue group. Amato et al. [12] documented that low driving pressure predicts increased survival in ARDS patients. Driving pressure declined only in patients who received individualized physiologic measurements in the second cohort. Decreased driving pressure, improved compliance of the respiratory system, and improved oxygenation all confirm lung recruitment [30].

In both the cohorts of patients, pressure-volume curves were not performed, thus careful airway closure was not estimated; however, as shown by Grieco [31] in people with obesity, airway closure might be a common phenomenon in the obese population and could co-exist with alveolar derecruitment in our patients as well. Despite the real value of alveolar pressure, it is unknown when airway closure is detected, it was shown [31] that theoretically it could be close to the airway opening pressure; consequently, the alveolar pressure at the end of expiration is independent of the applied PEEP when its value is below the opening airway pressure.

Contrary to the common association between high levels of airway pressure and reduced right heart function with hemodynamic impairment, the lung rescue

approach was associated with a decreased proportion of patients requiring vasoactive and inotropic agents. During LRM and after titration of PEEP, most patients' hemodynamics remained unchanged, as shown by TTE right systolic measurements and unchanged doses of vasoactive and inotropic drug infusions. In contrast to the recently published ART trial [13], a large study of ARDS patients, we found neither barotrauma nor cardiac arrest in our population. Differences in response to increased airway pressure found in the ART trial compared to hemodynamic stability observed in the lung rescue cohort might be explained by the large amount of recruitable lung parenchyma. When atelectatic lung is recruited, there is a decrease in pulmonary vascular resistance and right heart workload. While our study did not invasively measure cardiac output, pulmonary pressures, or filling pressures, our prior work using a porcine model of obesity documented unchanged pulmonary vascular resistance and hemodynamics with both LRM and decremental PEEP trial [18]. In patients treated according to the lung rescue approach, hemodynamic stability continues if ventilation can establish a homogeneous distribution of ventilation, physiological lung volumes with low transpulmonary pressures, and minimal alveolar overstretch, even when higher levels of airway pressures are required. Prior physiological studies have confirmed that hemodynamics of critically ill patients with high pleural pressure and obesity tolerate LRM and increased airway pressures [17, 18].

Limitations

First, this report is not a randomized controlled trial but a single-center retrospective study with a limited number of patients, evaluating two cohorts of patients treated with different approaches to mechanical ventilation. Notably, at ICU admission, patients in the lung rescue team cohort had worse oxygenation, which is associated with a higher severity of illness, than patients in the standard protocol-based cohort [32]. Despite increased critical illness, the lung rescue team cohort had decreased mortality in multivariate analysis after adjusting for common ICU mortality confounders, including age, BMI, APACHE, and PaO₂/FiO₂ ratio (Additional file 1: Table S4). The strength of the physiological rationale and improvement in mortality suggests future multicenter prospective randomized trials should be done to confirm these findings.

Second, survival benefits observed in the lung rescue team cohort might result from recent improvements in care of patients with obesity and novel ARDS therapies. However, since 2012 at MGH, there have not been changes in the care of patients with class III obesity, in titration of mechanical ventilation, or in treatment of

septic shock, except those discussed in this study. Further, as mentioned in the "Methods", none of our patients were enrolled in any MGH clinical trials. Although we cannot exclude other factors beyond our knowledge that might have affected the outcomes in the two cohorts, we know that, accounting for patients enrolled in trials, ARDS mortality did not change at MGH over the past 10 years (unpublished data) and did not change in the most recent US ARDS trials [25, 26].

Third, benefits associated with the lung rescue approach might be difficult to reproduce in other centers, unless a dedicated team has expertise in advanced measurements of lung physiology and hemodynamics. In 2014, we implemented a lung rescue team at MGH to optimize mechanical ventilation in patients with class III obesity. The research fellows that participated in the specialized team received ongoing training over a year in measurements of respiratory and cardiac physiology, including use of TTE, transpulmonary pressure measurement, and respiratory mechanics, which allowed personalized assessment of each patient in the lung rescue team cohort.

Fourth, despite we considered patients with an average BMI higher than 50 kg/m², in the present study, we did not take into account the possible differences between abdominal and non-abdominal obesity and their correlation with BMI.

Conclusions

To our knowledge, this is the first observational study to specifically investigate the impact of different mechanical ventilation approaches in patients with class III obesity and ARDS on survival. We found that in patients with an average BMI of > 50 kg/m², an individualized lung rescue approach based on individualized cardiopulmonary physiology is associated with a decreased in-hospital mortality. Based on our findings and considering the increasingly large group of hypoxic ARDS patients with obesity, the present study justifies the conduction of a randomized control trial testing whether a titration of mechanical ventilation based on an individualized strategy with a dedicated health professionals' team might be superior to a fixed protocol based on the ARDSnet lower PEEP/higher FiO₂ table.

Supplementary information

The online version of this article (<https://doi.org/10.1186/s13054-019-2709-x>) contains supplementary material, which is available to authorized users.

Additional file 1: Supplementary material. Additional information and tables about methods and results.

Abbreviations

BMI: Body mass index; ICU: Intensive care unit; ARDS: Acute respiratory distress syndrome; PEEP: Positive end-expiratory pressure; LRM: Lung

recruitment maneuver; TTE: Transthoracic echocardiography; TAPSE: Tricuspid annular plane systolic excursion; S': Peak systolic velocity

Acknowledgements

The investigators of the lung rescue team:

Gaetano Florio, Matteo Ferrari, Edward A Bittner, Roberta De Santis Santiago, Massimiliano Pirrone, Jacopo Fumagalli, Maddalena Teggia Droghi, Cristina Mietto, Riccardo Pinciroli, Sheri Berg, Aranya Bagchi, Kenneth Shelton, Alexander Kuo, Yvonne Lai, Abraham Sonny, Peggy Lai, Kathryn Hibbert, Jean Kwo, Richard M Pino, Jeanine Wiener-Kronish, Marcelo BP Amato, Pankaj Arora, Robert M Kacmarek, Lorenzo Berra, David Imber, Daniel Fisher, Daniel Chipman, Carolyn LaVita.

Funding

The study was funded by the Department of Anesthesia, Critical Care and Pain Medicine at Massachusetts General Hospital, Boston MA, USA. Dr. Lorenzo Berra was supported in part by NIH/NHLBI grant No. 1 K23 HL128882-01A1.

Availability of data and materials

The datasets used and/or analyzed during the current study are available from the corresponding author on reasonable request.

Authors' contributions

FG, BEA, DSSR, KRM, and BL conceived and designed the study. FG, FM, DSSR, PM, FJ, TDM, MC, and PR collected and analyzed the data. GF, BEA, AMBP, AP, KRM, and BL did the statistical analysis and interpreted the data. GF, KRM, and BL wrote the manuscript. All authors revised the manuscript for important intellectual content and approved the final version.

Ethics approval and consent to participate

The Institutional Review Board approved the study (MGH-IRB-2017P000544) with waiver of patient consent.

Consent for publication

Not applicable.

Competing interests

Dr. MBP Amato reports that his research laboratory has received grants from the Covidien/Medtronic (research on mechanical ventilation), Orange Med and Timpel S.A. (Electrical Impedance Tomography) outside the submitted work. Dr. R. Kacmarek is a consultant for Medtronic and Orange Med and has received research grants from Medtronic and Venner Medical. Dr. L. Berra is supported by National Institutes of Health/National Heart, Lung and Blood Institute (Bethesda, Maryland) grant n 1 K23 HL128882- AQ21 01A1 for the project titled "Hemolysis and Nitric Oxide". The other authors declare that they have no competing interests.

Publisher's Note

Springer Nature remains neutral with regard to jurisdictional claims in published maps and institutional affiliations.

Author details

¹Department of Anesthesia, Critical Care and Pain Medicine, Massachusetts General Hospital, Harvard Medical School, 55 Fruit Street, Boston, MA 02141, USA. ²Division of Pulmonary and Critical Care, Massachusetts General Hospital, Boston, MA, USA. ³Pulmonary Division, Cardio-Pulmonary Department, Heart Institute (Incor), Hospital Das Clinicas da FMUSP, University of Sao Paulo, Sao Paulo, Brazil. ⁴Division of Cardiovascular Disease, University of Alabama at Birmingham, Birmingham, AL, USA. ⁵Department of Respiratory Care, Massachusetts General Hospital and Harvard Medical School, Boston, MA, USA.

Received: 3 September 2019 Accepted: 16 December 2019

Published online: 15 January 2020

References

1. Hales CM, Carroll MD, Fryar CD, Ogden CL. Prevalence of Obesity Among Adults and Youth: United States, 2015-2016. *NCHS Data Brief*. 2017;(288):1-8.

2. Hales CM, Fryar CD, Carroll MD, Freedman DS, Ogden CL. Trends in obesity and severe obesity prevalence in US youth and adults by sex and age, 2007-2008 to 2015-2016. *JAMA*. 2018;319:1723-5.
3. Di Angelantonio E, Bhupathiraju SN, Wormser D, Gao P, Kaptoge S, de Gonzalez AB, et al. Body-mass index and all-cause mortality: individual-participant-data meta-analysis of 239 prospective studies in four continents. *Lancet*. 2016;388:776-86.
4. Definition Task Force ARDS, Ranieri VM, Rubenfeld GD, Thompson BT, Ferguson ND, Caldwell E, et al. Acute respiratory distress syndrome: the Berlin Definition. *JAMA*. 2012;307:2526-33.
5. Marshall RV, Haas PJ, Schweinurth JM, Replogle WH. Tracheotomy outcomes in super obese patients. *JAMA Otolaryngol Neck Surg*. 2016; 142:772.
6. Soto GJ, Frank AJ, Christiani DC, Gong MN. Body mass index and acute kidney injury in the acute respiratory distress syndrome. *Crit Care Med*. 2012;40:2601-8.
7. Bellani G, Laffey JG, Pham T, Fan E, Brochard L, Esteban A, et al. Epidemiology, patterns of care, and mortality for patients with acute respiratory distress syndrome in intensive care units in 50 countries. *JAMA*. 2016;315:788-800.
8. El-Solh A, Sikka P, Bozkanat E, Jaafar W, Davies J. Morbid obesity in the medical ICU. *Chest*. 2001;120:1989-97.
9. Acute Respiratory Distress Syndrome Network, Brower RG, Matthay MA, Morris A, Schoenfeld D, Thompson BT, et al. Ventilation with lower tidal volumes as compared with traditional tidal volumes for acute lung injury and the acute respiratory distress syndrome. *N Engl J Med*. 2000;342:1301-8.
10. Amato MB, Barbas CS, Medeiros DM, Magaldi RB, Schettino GP, Lorenzi-Filho G, et al. Effect of a protective-ventilation strategy on mortality in the acute respiratory distress syndrome. *N Engl J Med*. 1998;338:347-54.
11. Brower RG, Lanken PN, MacIntyre N, Matthay MA, Morris A, Ancukiewicz M, et al. Higher versus lower positive end-expiratory pressures in patients with the acute respiratory distress syndrome. *N Engl J Med*. 2004;351:327-36.
12. Amato MBP, Meade MO, Slutsky AS, Brochard L, Costa ELV, Schoenfeld DA, et al. Driving pressure and survival in the acute respiratory distress syndrome. *N Engl J Med*. 2015;372:747-55.
13. Writing Group for the Alveolar Recruitment for Acute Respiratory Distress Syndrome Trial (ART) Investigators, Cavalcanti AB, Suzumura EA, Laranjeira LN, de Paisani DM, Damiani LP, et al. Effect of lung recruitment and titrated positive end-expiratory pressure (PEEP) vs low PEEP on mortality in patients with acute respiratory distress syndrome: a randomized clinical trial. *JAMA*. 2017;318:1335-45.
14. Brochard L, Roudot-Thoraval F, Roupie E, Delclaux C, Chastre J, Fernandez-Mondéjar E, et al. Tidal volume reduction for prevention of ventilator-induced lung injury in acute respiratory distress syndrome. The Multicenter Trial group on tidal volume reduction in ARDS. *Am J Respir Crit Care Med*. 1998;158:1831-8.
15. Meade MO, Cook DJ, Guyatt GH, Slutsky AS, Arabi YM, Cooper DJ, et al. Ventilation strategy using low tidal volumes, recruitment maneuvers, and high positive end-expiratory pressure for acute lung injury and acute respiratory distress syndrome. *JAMA*. 2008;299:637.
16. Behazin N, Jones SB, Cohen RI, Loring SH. Respiratory restriction and elevated pleural and esophageal pressures in morbid obesity. *J Appl Physiol*. 2010;108:212-8.
17. Pirrone M, Fisher D, Chipman D, Imber DAE, Corona J, Mietto C, et al. Recruitment maneuvers and positive end-expiratory pressure titration in morbidly obese ICU patients. *Crit Care Med*. 2016;44:300-7.
18. Fumagalli J, Berra L, Zhang C, Pirrone M, Santiago RRS, Gomes S, et al. Transpulmonary pressure describes lung morphology during decremental positive end-expiratory pressure trials in obesity. *Crit Care Med*. 2017;45: 1374-81.
19. Fumagalli J, Santiago RRS, Teggia Droghi M, Zhang C, Fintelmann FJ, Troschel FM, et al. Lung recruitment in obese patients with acute respiratory distress syndrome. *Anesthesiology*. 2019;130:791-803.
20. Hickling KG, Henderson SJ, Jackson R. Low mortality associated with low volume pressure limited ventilation with permissive hypercapnia in severe adult respiratory distress syndrome. *Intensive Care Med*. 1990;16:372-7.
21. Hickling KG, Walsh J, Henderson S, Jackson R. Low mortality rate in adult respiratory distress syndrome using low-volume, pressure-limited ventilation with permissive hypercapnia: a prospective study. *Crit Care Med*. 1994;22: 1568-78.

22. Papazian L, Forel J-M, Gacouin A, Penot-Ragon C, Perrin G, Loundou A, et al. Neuromuscular blockers in early acute respiratory distress syndrome. *N Engl J Med*. 2010;363:1107–16.
23. Spina S, Capriles M, De Santis SR, Florio G, Teggia Droghi M, et al. Development of a Lung rescue team to improve care of patients with refractory acute respiratory failure. *Resp Care*. 2019; in press
24. Boles J-M, Bionc J, Et A. Conference de Consensus Internationale. Weaning from mechanical ventilation. Statement of the Seventh International Consensus Conference on intensive Care Medicine. *Eur Respir J*. 2007;29(5): 1033–56.
25. National Heart, Lung and BIPCTN, Moss M, Huang DT, Brower RG, Ferguson ND, Ginde AA, et al. Early neuromuscular blockade in the acute respiratory distress syndrome. *N Engl J Med*. 2019;380:1997–2008.
26. Beitler JR, Sarge T, Banner-Goodspeed VM, Gong MN, Cook D, Novack V, et al. Effect of titrating positive end-expiratory pressure (PEEP) with an esophageal pressure–guided strategy vs an empirical high PEEP-F io 2 strategy on death and days free from mechanical ventilation among patients with acute respiratory distress syndrome. *JAMA*. 2019;321(9):846–57.
27. Mercat A, Richard J-CM, Vielle B, Jaber S, Osman D, Diehl J-L, et al. Positive end-expiratory pressure setting in adults with acute lung injury and acute respiratory distress syndrome. *JAMA*. 2008;299:646.
28. Writing Committee for the PROBESE Collaborative Group of the PROtective VEntilation Network (PROVEnet) for the Clinical Trial Network of the European Society of Anaesthesiology, Bluth T, Serpa Neto A, Schultz MJ, Pelosi P, Gama de Abreu M. Effect of intraoperative high positive end-expiratory pressure (PEEP) with recruitment maneuvers vs low PEEP on postoperative pulmonary complications in obese patients: a randomized clinical trial. *JAMA*. 2019;321(23):2292–2305.
29. Gattinoni L, Pesenti A. The concept of “baby lung”. *Intensive Care Med*. 2005;31:776–84.
30. Gattinoni L, Caironi P, Cressoni M, Chiumello D, Ranieri VM, Quintel M, et al. Lung recruitment in patients with the acute respiratory distress syndrome. *N Engl J Med*. 2006;354:1775–86.
31. Grieco DL, Anzellotti GM, Russo A, Bongiovanni F, Costantini B, D'Indinosante M, et al. Airway closure during surgical pneumoperitoneum in obese patients. *Anesthesiology*. 2019;131(1):58–73.
32. Maiolo G, Collino F, Vasques F, Rapetti F, Tonetti T, Romitti F, et al. Reclassifying acute respiratory distress syndrome. *Am J Respir Crit Care Med*. 2018;197:1586–95.

Ready to submit your research? Choose BMC and benefit from:

- fast, convenient online submission
- thorough peer review by experienced researchers in your field
- rapid publication on acceptance
- support for research data, including large and complex data types
- gold Open Access which fosters wider collaboration and increased citations
- maximum visibility for your research: over 100M website views per year

At BMC, research is always in progress.

Learn more biomedcentral.com/submissions

