

UC Irvine

UC Irvine Previously Published Works

Title

Neuroanatomical changes observed over the course of a human pregnancy

Permalink

<https://escholarship.org/uc/item/73w7c7pk>

Journal

bioRxiv, 5(01-02)

ISSN

2692-8205

Authors

Pritschet, Laura

Taylor, Caitlin M

Cossio, Daniela

et al.

Publication Date

2024-05-10

DOI

10.1101/2023.12.14.571688

Copyright Information

This work is made available under the terms of a Creative Commons Attribution License, available at <https://creativecommons.org/licenses/by/4.0/>

Peer reviewed

Neuroanatomical changes observed over the course of a human pregnancy

Received: 23 August 2023

Accepted: 29 July 2024

Published online: 16 September 2024

 Check for updates

Laura Pritschet¹✉, Caitlin M. Taylor¹✉, Daniela Cossio²,
Joshua Faskowitz³✉, Tyler Santander¹, Daniel A. Handwerker³,
Hannah Grotzinger¹, Evan Layher¹, Elizabeth R. Chrastil^{2,5}✉ &
Emily G. Jacobs^{1,4,5}✉

Pregnancy is a period of profound hormonal and physiological changes experienced by millions of women annually, yet the neural changes unfolding in the maternal brain throughout gestation are not well studied in humans. Leveraging precision imaging, we mapped neuroanatomical changes in an individual from preconception through 2 years postpartum. Pronounced decreases in gray matter volume and cortical thickness were evident across the brain, standing in contrast to increases in white matter microstructural integrity, ventricle volume and cerebrospinal fluid, with few regions untouched by the transition to motherhood. This dataset serves as a comprehensive map of the human brain across gestation, providing an open-access resource for the brain imaging community to further explore and understand the maternal brain.

Worldwide, nearly 85% of women experience one or more pregnancies in their lifetime¹, with 140 million women becoming pregnant each year. Over an approximately 40-week gestational window, the maternal body undergoes profound physiological adaptations to support the development of the fetus, including increases in plasma volume, metabolic rate, oxygen consumption and immune regulation². These rapid adaptations are initiated by 100-fold to 1,000-fold increases in hormone production, including estrogen and progesterone. These neuromodulatory hormones also drive significant reorganization of the central nervous system. Evidence from animal models and human studies converge on pregnancy as a period of remarkable neuroplasticity^{3–10} (see ref. 10 for one of the earliest known observations). Gestational increases in steroid hormone synthesis drive neurogenesis, dendritic spine growth, microglial proliferation, myelination and astrocyte remodeling (for review, see ref. 11). These cellular changes are pronounced in brain circuits that promote maternal behavior. For example, Ammari et al. recently discovered that steroid hormones can fine-tune the response properties of galanin neurons in the rodent medial preoptic area of the hypothalamus (mPOA), leading to enhanced sensitivity in dams to sensory cues from newborn pups¹².

In humans, reductions in gray matter volume (GMV) have been observed postpartum^{13–16}, particularly in regions central to theory-of-mind processing¹³. These GMV changes persist at 6 years postpartum¹⁷ and are traceable decades later^{18,19}, underscoring the permanence of this major remodeling event. And yet the changes that occur within the maternal brain during gestation itself are virtually unknown (see ref. 20 for early neuroimaging insight). A recent study by Paternina-Die et al. offers intriguing clues²¹. Women were scanned once in the third trimester and again in the postpartum period, revealing a reduction of cortical volume observable in the late pregnancy scan. These findings suggest that pregnancy is a highly dynamic period for neural remodeling, yet neuroscientists lack a detailed map of how the human brain changes throughout the gestational period.

Here we conducted a precision imaging study of pregnancy in which a healthy 38-year-old primiparous woman underwent 26 magnetic resonance imaging (MRI) scans and venipuncture beginning 3 weeks preconception through 2 years postpartum. We observed widespread reductions in cortical GMV and cortical thickness (CT) occurring in step with advancing gestational week and the dramatic rise in sex hormone production. Remodeling was also evident within

¹Department of Psychological & Brain Sciences, University of California, Santa Barbara, CA, USA. ²Department of Neurobiology and Behavior, University of California, Irvine, CA, USA. ³Section on Functional Imaging Methods, Laboratory of Brain and Cognition, National Institute of Mental Health, National Institutes of Health, Bethesda, MD, USA. ⁴Neuroscience Research Institute, University of California, Santa Barbara, CA, USA. ⁵These authors contributed equally: Elizabeth R. Chrastil, Emily G. Jacobs. ✉ e-mail: laura.pritschet@pennteam.upenn.edu; chrastil@uci.edu; emily.jacobs@psych.ucsb.edu

subcortical structures, including the ventral diencephalon, caudate, thalamus, putamen and hippocampus. High-resolution imaging and segmentation of the medial temporal lobe (MTL) extend these findings further, revealing specific volumetric reductions within hippocampal subfields CA1, CA2/CA3 and parahippocampal cortex (PHC). In contrast to widespread decreases in cortical and subcortical GMV, correlational tractography analyses revealed nonlinear increases in white matter quantitative anisotropy (QA) throughout the brain—indicating greater tract integrity—as gestational week progressed. Together, these findings reveal the highly dynamic changes that unfold in a human brain across pregnancy, demonstrating a capacity for extensive neural remodeling well into adulthood.

Results

Serological evaluations

Serological evaluations captured canonical hormone fluctuations characteristic of the prenatal, perinatal and postnatal periods (Fig. 1b). Serum hormone concentrations increased significantly over the course of pregnancy and dropped precipitously postpartum (preconception, estradiol (E) = 3.42 pg ml⁻¹ and progesterone (P) = 0.84 ng ml⁻¹; 3 weeks preparturition, E = 12,400 pg ml⁻¹ and P = 103 ng ml⁻¹; 3 months postparturition, E = 11.50 pg ml⁻¹ and P = 0.04 ng ml⁻¹).

Whole-brain dynamics from baseline through postpartum

To begin, we characterized broad neuroanatomical changes over the course of the entire experimental window (baseline–2 years postpartum, 26 scans; Fig. 1d). Generalized additive models revealed strong nonlinear (effective degrees of freedom > 3) relationships between weeks since conception and summary brain metrics. Total GMV ($F = 27.87, P < 0.001$, deviance explained = 93.9%, $R^2_{\text{adj}} = 0.91$), summary CT ($F = 15.79, P < 0.001$, deviance explained = 78.6%, $R^2_{\text{adj}} = 0.75$) and total brain volume ($F = 26.12, P < 0.001$, deviance explained = 93.4%, $R^2_{\text{adj}} = 0.90$) linearly decreased during gestation and appeared to partially rebound postpartum. In contrast, global microstructural integrity (QA) of white matter increased throughout the first and second trimesters before returning to baseline levels in the postpartum period (whole-brain QA, $F = 4.62, P = 0.007$, deviance explained = 60.2%, $R^2_{\text{adj}} = 0.51$). We also observed nonlinear patterns of lateral ventricle expansion ($F = 10.44, P < 0.001$, deviance explained = 83.8%, $R^2_{\text{adj}} = 0.77$) and increased cerebrospinal fluid (CSF; $F = 13.32, P < 0.001$, deviance explained = 83.8%, $R^2_{\text{adj}} = 0.79$) rising in the second and third trimesters before dropping sharply postpartum.

Cortical volume and thickness changes tied to gestation

We then narrowed the aperture to capture changes unfolding within gestation itself (baseline–36 weeks pregnant, 19 scans). Relationships between summary brain metrics were evident over the gestational period as follows: total brain volume, GMV and CT were positively associated with one another, whereas lateral ventricles, CSF and global QA demonstrated negative relationships with GMV (Supplementary Fig. 1).

Changes in GMV were near-ubiquitous across the cortical mantle (Fig. 2a). Most large-scale brain networks exhibited decreases in GMV (Fig. 2b and Supplementary Table 1); indeed, 80% of the 400 regions of interest (ROI) demonstrated negative relationships between GMV and gestation week (Fig. 2a and Supplementary Table 2). Together, these results provide evidence of a global decrease in cortical volume across pregnancy. Several sensory and attention subnetworks were particularly sensitive to gestation, including the control (subnetwork B), salience/ventral attention (subnetwork A), dorsal attention (subnetwork B), default (subnetwork A) and somatomotor (subnetworks A and B) networks (Supplementary Table 1). Regions driving these network-level changes include the bilateral inferior parietal lobe, postcentral gyri, insulae, prefrontal cortex, posterior cingulate and somatosensory cortex (Fig. 2c, Supplementary Table 2 and validation of findings using alternate pipeline in Supplementary Tables 1 and 3). These regions and

associated brain networks appear to decrease in volume at a faster rate than the rest of the brain throughout pregnancy, as determined by a subsequent analysis controlling for total GMV (Supplementary Tables 1 and 2). GMV reductions were also significantly correlated with the participant's estradiol and progesterone concentrations (Supplementary Table 1). A highly similar pattern of results was observed when examining pregnancy-related CT changes (Supplementary Fig. 3 and Supplementary Tables 4 and 5). Significant reductions in cortical GMV over gestation remained after controlling for standard quality control (QC) metrics, albeit with some influence on the magnitude and location of the observed effects (Supplementary Figs. 4 and 5).

In contrast, GMV within regions of the default mode (subnetwork C), limbic (subnetworks A and B) and visual peripheral networks buck the global trend by slightly increasing (for example, temporal poles), remaining constant (for example, orbitofrontal cortex) or reducing at a much slower rate (for example, extrastriate cortex) than total GMV (Fig. 2a,b and Supplementary Tables 1 and 2). CT changes in these regions exhibit similar patterns (Supplementary Fig. 3 and Supplementary Tables 4 and 5).

Subcortical GMV changes tied to gestation

Consistent with the broader cortical reductions in GMV, several subcortical regions significantly reduced in volume across gestation (Fig. 3a, left). This included bilateral ventral diencephalon (right hemisphere values shown in Fig. 3a, right); encompasses hypothalamus, substantia nigra, mammillary body, lateral geniculate nucleus and red nucleus among others²²), caudate, hippocampus and thalamus, along with left putamen and brain stem (Supplementary Table 6, $q < 0.05$).

Next, high-resolution segmentation of the MTL allowed us to interrogate subcortical structures at a finer resolution, revealing nonlinear volumetric decreases in CA1 ($F(2,15) = 5.84, q = 0.031, R^2_{\text{adj}} = 0.36$; Fig. 3b, left) and CA2/CA3 ($F(2,15) = 6.82, q = 0.027, R^2_{\text{adj}} = 0.41$; Fig. 3b, middle) across gestation. PHC exhibited linear volumetric decreases across gestation ($F(1,16) = 24.87, q < 0.001, R^2_{\text{adj}} = 0.58$; Fig. 3b, right) which was also tied to estradiol ($F(1,12) = 20.21, q = 0.005, R^2_{\text{adj}} = 0.60$). All three relationships remained significant after proportional correction for total GMV. There was no significant change in other subregions or total volume of the hippocampal body, or in the parahippocampal gyrus (Supplementary Table 7 and Supplementary Fig. 8).

White matter microstructure changes tied to gestation

In contrast to decreasing global GMV, correlational tractography of white matter, which tests for linear trends in the data, revealed increasing microstructural integrity across the whole brain during gestation (Fig. 4a), concomitant with the rise in 17 β -estradiol and progesterone (all $q < 0.001$; Supplementary Fig. 9). Tracts displaying robust correlations with gestational week included the corpus callosum, arcuate fasciculus, inferior fronto-occipital fasciculus and inferior longitudinal fasciculus (Fig. 4b), as well as the cingulum bundle, middle and superior longitudinal fasciculus, corticostriatal, corticospinal and corticopontine tracts (see Supplementary Table 9 for complete list).

Comparing brain changes across pregnancy against controls

We then compared the changes in GMV across gestation to that of typical variability over time, derived from eight densely-sampled controls²³. The GMV changes we see across pregnancy far exceed normative brain variability (Supplementary Fig. 11). On average, change in cortical GMV was nearly three times higher than controls scanned over a similar duration (Supplementary Fig. 11a,b). This extends to MTL subfields, wherein change in volume was three to four times greater across gestation than normative brain variability (Supplementary Fig. 11c,d). We contextualized these findings further by comparing gestational GMV change against our participant's preconception brain volumes; average GMV change during pregnancy was six times (cortical) and three times (MTL) higher than the variability observed between baseline sessions.

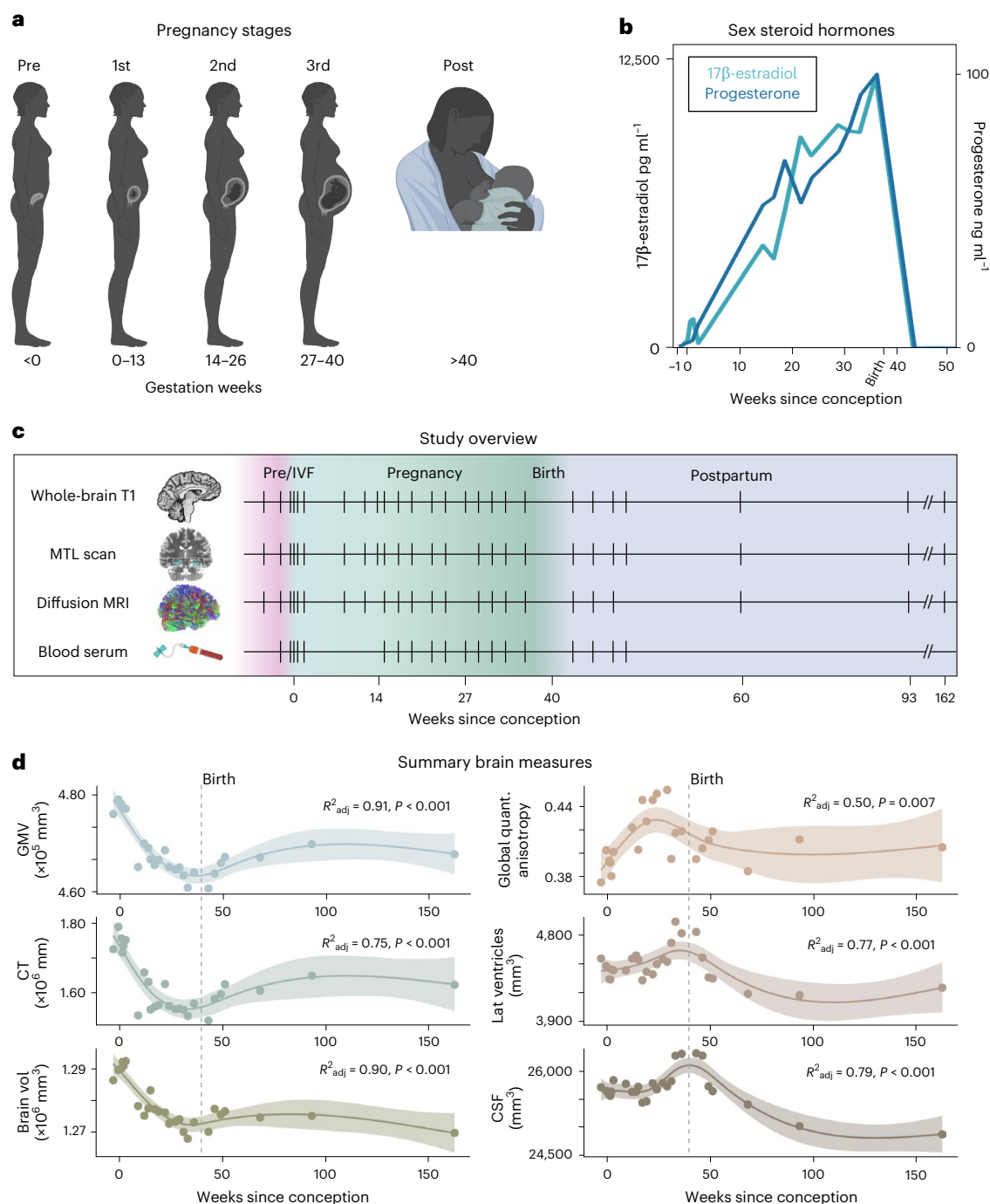


Fig. 1 | Precision imaging reveals neuroanatomical changes throughout gestation. **a**, Standard medical demarcations for pregnancy stages (that is, trimesters) by gestation week (the image is created with BioRender.com). **b**, Steroid hormones increased significantly throughout pregnancy and dropped precipitously postpartum, as is characteristic of the prenatal and postnatal periods. **c**, A healthy 38-year-old primiparous woman underwent 26 scanning sessions from 3 weeks preconception through 2 years postpartum. Scans were distributed throughout preconception (four scans), first trimester (four scans), second trimester (six scans), third trimester (five scans) and postpartum (seven scans); tick marks indicate when major measures were collected and

colors denote pregnancy stage. The participant underwent IVF to achieve pregnancy, allowing for precise mapping of ovulation, conception and gestation week. **d**, Summary (that is, total) of brain measures throughout the experiment. Generalized additive models revealed GMV, CT and total brain volume decreased throughout pregnancy (see Methods for validation with cubic regression), with a slight recovery postpartum. Global QA, lateral ventricle and CSF volumes displayed nonlinear increases across gestation, with a notable rise in the second and third trimesters before dropping sharply postpartum. Shaded regions represent 95% confidence bands; solid lines indicate model fit; dashed line indicates parturition.

Discussion

Converging evidence across mammalian species points to pregnancy as a remarkable period of neuroplasticity, revealing the brain's ability to undergo adaptive, hormonally-driven neuroanatomical changes beyond adolescence^{13-15,20,21,24-26}. Investigations that compare women

prepregnancy and then again postpartum provide the strongest evidence to date that the human brain undergoes such neural changes^{11,27}. But what about pregnancy itself? Over what time course do anatomical changes in the maternal brain manifest? Are they tied to the substantial increase in sex hormone production? Here we begin to address these

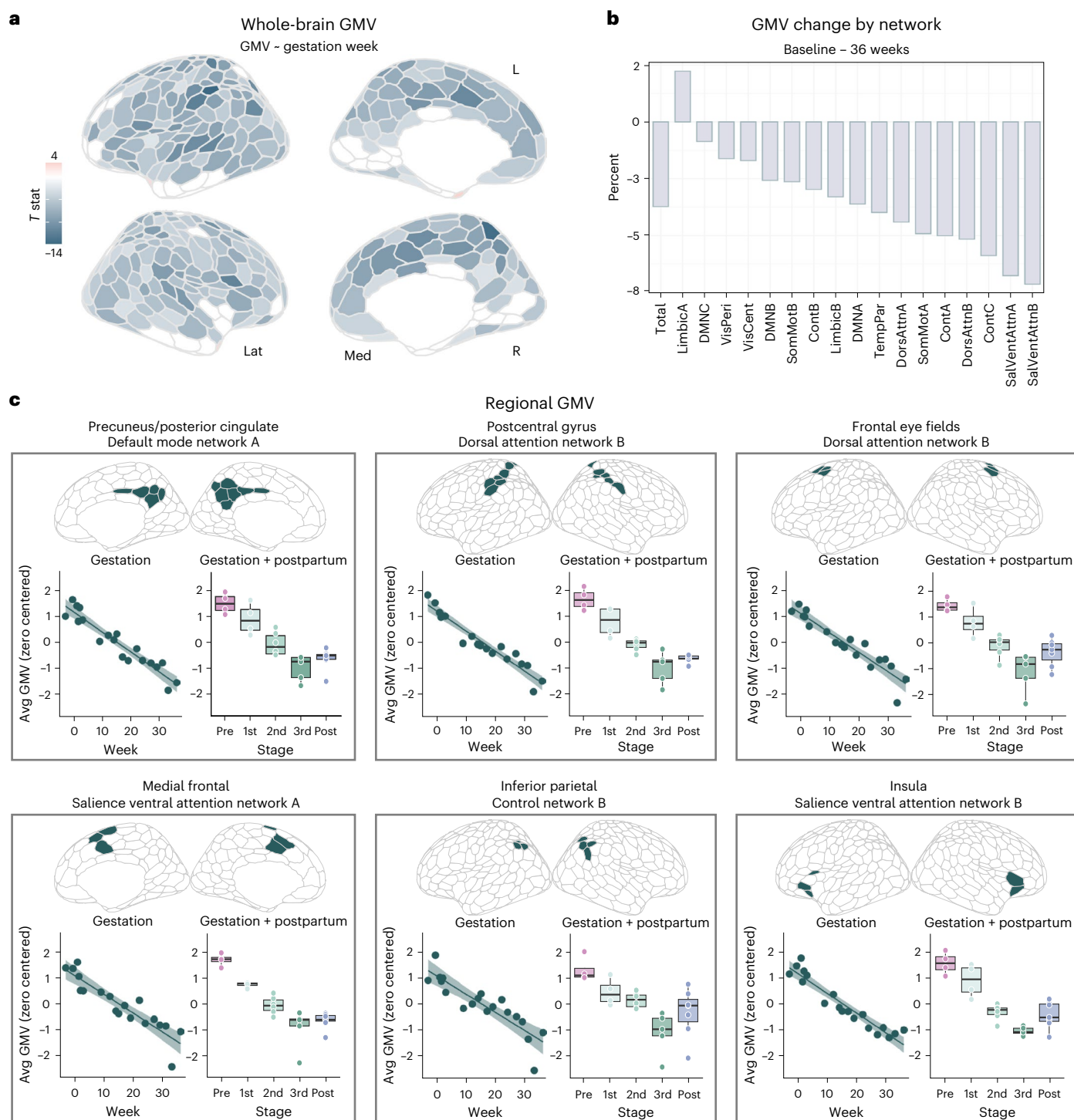
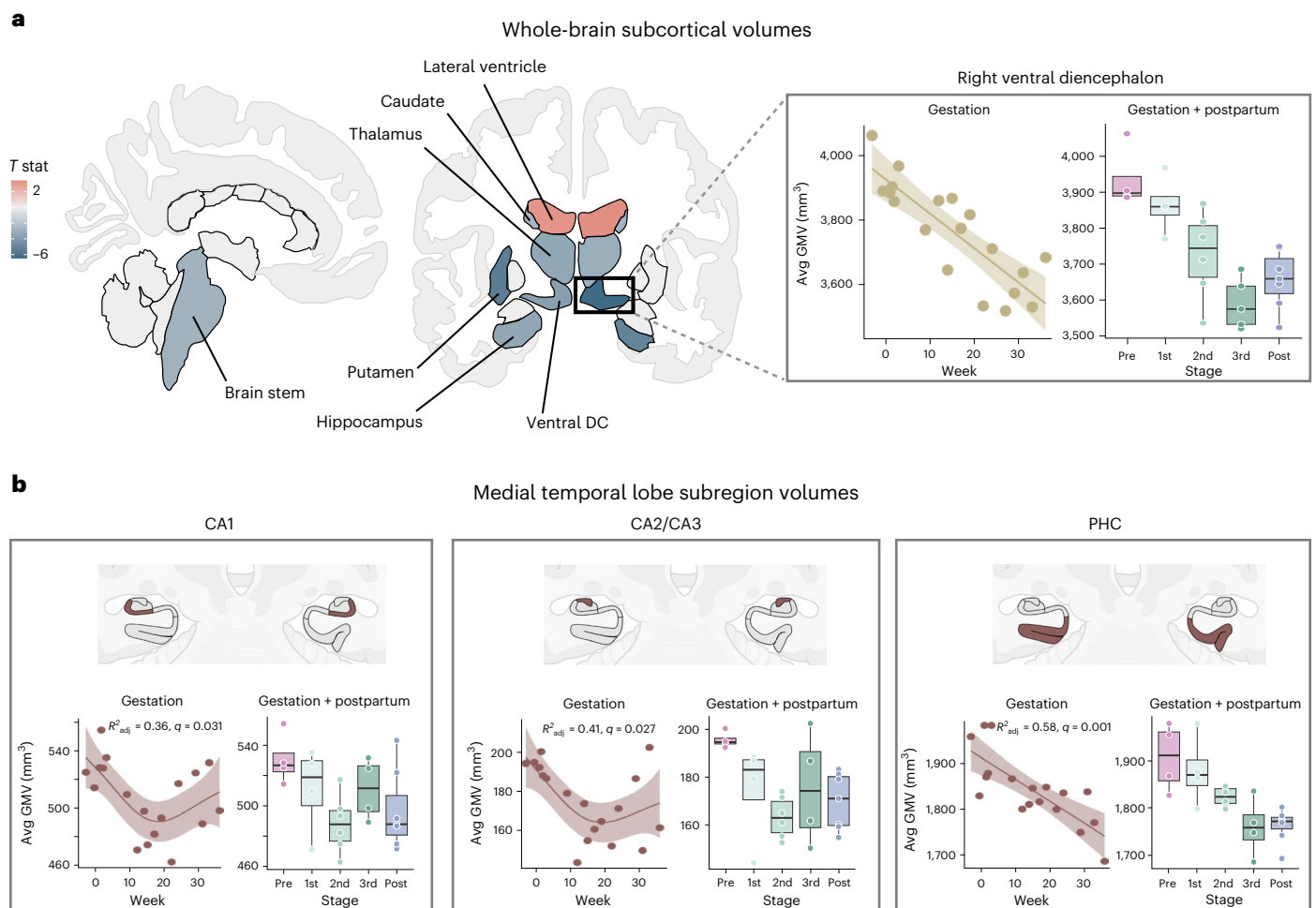


Fig. 2 | Cortical GMV showed widespread change through gestation and postpartum. **a**, Multivariate regression analyses reveal largely negative relationships between gestation week and regional GMV, with only a minority of regions unaffected or increasing over the gestational window (baseline–36 weeks). All associations presented here were corrected for multiple comparisons (FDR at $q < 0.05$; nonsignificant values set to zero for interpretability). **b**, Average network change was calculated by estimating GMV percent change from baseline (initial) to 36 weeks gestation (final). Attention and control networks appear most affected. **c**, Six representative regions, classified by major subnetworks, that exhibit pronounced GMV change across gestation. For each panel, we display a scatterplot between average GMV of the ROIs and gestation week (left; gestation sessions only, 19 scans), and summary GMV of ROIs by pregnancy stage across the whole study (right; gestation and postpartum sessions, 26 scans).

Shaded regions in scatterplots represent a 95% confidence interval. Each boxplot represents IQR for each stage, with a horizontal line representing the median value. The whiskers indicate variability outside (± 1.5) of this range. Outside values are $>1.5\times$ and $<3\times$ IQR beyond either end of the box. All statistical tests were corrected for multiple comparisons (FDR at $q < 0.05$) and values were z scored and transformed to have a mean of zero and s.d. of one for easier comparison across regions. Please note that the data values shown here are raw (see Supplementary Tables 1 and 2 and Supplementary Data 1 for exhaustive list). Brain visualizations created with R package ggseg⁴⁸. IQR, interquartile range; Lat, lateral; Med, medial; DMN, default mode network; VisPeri, visual peripheral network; SomMot, somatomotor network; VisCent, visual central network; Cont, control network; TempPar, temporal parietal network; DorsAttn, dorsal attention network; SalVentAttn, salience/ventral attention network.



into seven bilateral subregions. Quadratic (CA1, CA2/CA3) and linear regression analyses (PHC) revealed subfields were negatively associated with gestation week (baseline–36 weeks, 18 scans) and did not return to baseline postpartum (gestation and postpartum, 25 scans). Shaded regions in scatterplots represent a 95% confidence interval. Each boxplot represents IQR for each stage, with a horizontal line representing the median value. The whiskers indicate variability outside (± 1.5) of this range. Outside values are $>1.5\times$ and $<3\times$ IQR beyond either end of the box. FDR-corrected at $q < 0.05$. For **a** and **b**, nonsignificant regions were set to zero for interpretability. See Supplementary Fig. 6 for complete labeling of regions in both segmentations. Brain visualizations created with R package ggseg⁴⁸. DC, diencephalon.

outstanding questions. This study and corresponding open-access dataset offer neuroscientists a detailed map of the human brain across gestation, a resource for which a wide range of previously unattainable neurobiological questions can now be explored.

Our findings from this precision imaging study show that pregnancy is characterized by reductions in GMV, cortical thinning and enhanced white matter microstructural integrity that unfold week by week. These changes were also tied to the significant rise in steroid hormone concentrations over pregnancy. Some of these changes persist at 2 years postpartum (for example, global reductions in GMV and CT), while others, including markers of white matter integrity, appear to be transient. Ventricular expansion and contraction parallel these cortical changes. These widespread patterns, and the notable increase in CSF volume across gestation, could reflect increased water retention and subsequent compression of cortical tissue. However, the persistence of these changes at 2 years postpartum and regional variation in GMV, CT and QA, hint at cellular underpinnings, such as alterations in glia

or neuron number, synaptic density and myelination (for review on the latter, see ref. 4). Future studies of the relationship between fluid dynamics and volumetric changes will help clarify the factors that drive global neural changes during pregnancy; such insights will have broad implications for maternal health (for example, neurological effects tied to pre-eclampsia or edema).

Critically, dynamic neural changes occurred within the pregnancy window itself, a nuance not captured by studies limited to comparisons between prepregnancy and postpregnancy. For example, we observed large increases in white matter microstructural integrity (QA) throughout the first and second trimesters of pregnancy, but these measures fully returned to baseline values by the first postpartum scan. This pattern may explain why previous studies report no pregnancy-related differences in white matter tractography¹⁴. Other measures, such as GMV and CT, decreased throughout gestation and displayed only a modest rebound postpartum. These nonlinear patterns suggest that only quantifying prepregnancy and postpartum brain structure may

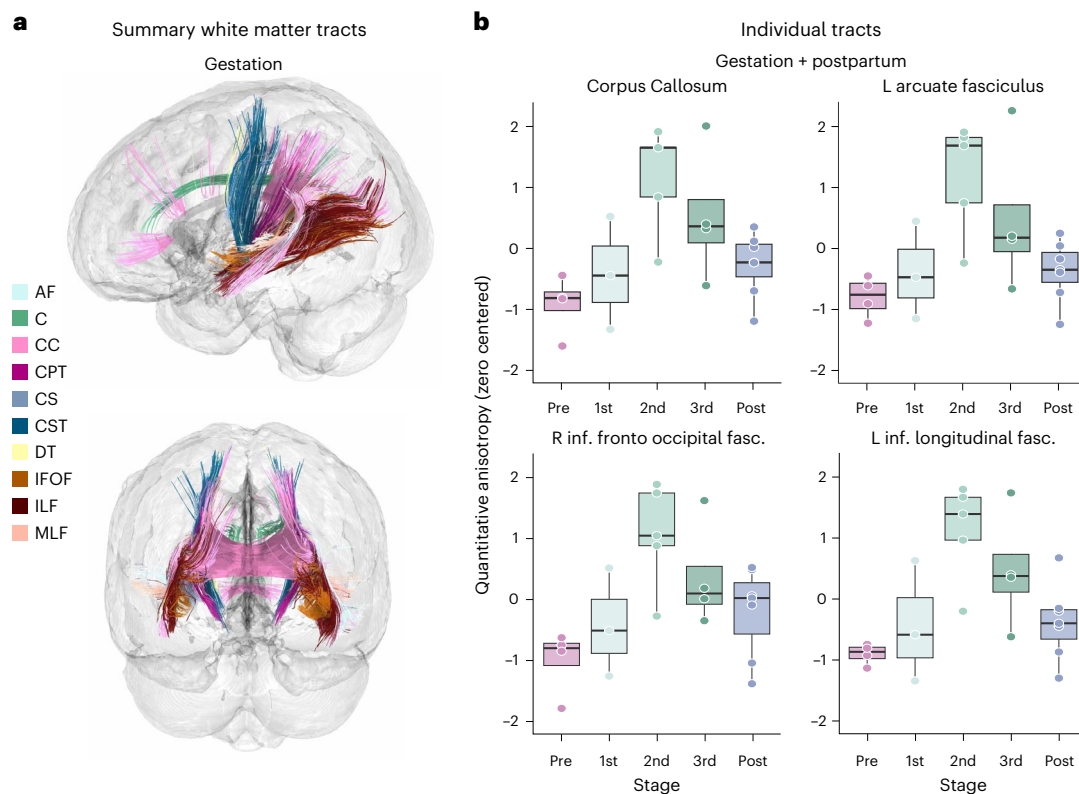


Fig. 4 | White matter microstructure changes throughout the experiment.

a, Numerous white matter tracts demonstrate increasing QA in relation to advancing gestation week (baseline—36 weeks, 16 scans), as determined by correlational tractography analysis (FDR, $q < 0.0001$). See Supplementary Table 9 for complete list of tracts with a significant correlation between QA and gestation week. **b**, Summary of QA values by pregnancy stage (gestation and postpartum, 23 scans) for representative ROIs significantly tied to gestation. ROI-based tractometry was used to extract QA values. Each boxplot represents

IQR for each stage, with a horizontal line representing the median value. The whiskers indicate variability outside (± 1.5) of this range. Outside values are $>1.5 \times$ and $<3 \times$ IQR beyond either end of the box. Values were z scored and transformed to have a mean of zero and s.d. of one for easier comparison across individual tracts. AF, arcuate fasciculus; C, cingulum bundle; CC, corpus callosum; CPT, corticopontine tracts; CS, corticostriatal tracts; CST, corticospinal tracts; DT, dentatorubrothalamic tract; IFOF, inferior frontal occipital fasciculus; ILF, inferior longitudinal fasciculus; MLF, middle longitudinal fasciculus.

overlook the full range of changes that unfold within the gestational window, and underrepresent the brain's metamorphosis during pregnancy. Furthermore, although observed changes were largely global, some regions displayed notable stability (for example, extrastriate cortex). The subcortical region that displayed the strongest relationship with gestation week was the ventral diencephalon, which encompasses the hypothalamus and subsequent medial preoptic area and paraventricular nucleus—structures critical for inducing maternal behavior^{12,16}. The hippocampus exhibited a reduction in volume across gestation, and with higher spatial resolution, this reduction was revealed to be driven by changes in CA1 and CA2/CA3 subfield volumes, while other hippocampal subfields remained stable. Adjacent PHC within the MTL also exhibited volume reduction across gestation. While our hippocampal findings are consistent with pre/post studies of pregnancy¹³, the precision lens applied within gestation revealed the nonlinear nature of this reduction. Recapitulating and clarifying these regionally specific patterns of volume change throughout the MTL merits further investigation.

Similar precision imaging studies have captured dynamic brain reorganization across other neuroendocrine transitions, such as the menstrual cycle (see review in ref. 28), underscoring the powerful role steroid hormones have in shaping the mammalian brain²⁹. Endocrine changes across pregnancy dwarf those that occur across the menstrual cycle, which highlights the critical need to map the brain's response to this unique hormonal state. Broad physiological changes occur in tandem with the rise in steroid hormones, including changes in body mass composition, water retention, immune function and

sleep patterns¹¹. These factors could have a role in the brain changes observed here, with some driving neurobiological changes and others, like water retention, potentially affecting MRI-based measurements. Note that, although cortical reductions in GMV over gestation were stable across analyses, accounting for QC measures influenced the magnitude and location of these results. These metrics all fell within the standard range, but there may be meaningful reductions in signal that accompany volumetric reductions (for example, increased CSF and decreased GM)—a methodological nuance that goes beyond the scope of this resource study. Ultimately, identifying the shared and unique contributions of these factors to the neuroanatomical changes that unfold across gestation warrants further investigation. Deeply phenotyping a large and diverse cohort of women across pregnancy will open up new avenues of exploration, for example, allowing researchers to link blood-based proteomic signatures to pregnancy outcomes; deploying wearable devices to monitor changes in sleep, cognition and mood; and probing the broader social and environmental determinants of maternal health²⁷.

The neuroanatomical changes that unfold during matrescence may have broad implications for understanding individual differences in parental behavior^{13,24,30,31}, vulnerability to mental health disorders^{32,33} and patterns of brain aging^{18,19,34–36}. Decreases in GMV may reflect 'fine-tuning' of the brain by neuromodulatory hormones in preparation for parenthood²⁶. For example, in rodents, steroid hormones promote parental behavior by remodeling specific neural circuits in the medial preoptic area of the hypothalamus. These behavioral adaptations are critical to the dam's ability to meet the demands of caring for

the offspring¹². Human studies have revealed GMV reductions in areas of the brain important for social cognition and the magnitude of these changes corresponds with increased parental attachment¹³. Deeper examination of cellular and systems-level mechanisms will improve our understanding of how pregnancy remodels specific circuits to promote maternal behavior.

Although studied to a lesser degree, ties between maternal behavior and white matter microstructure (particularly connectivity between temporal and occipital lobes) have been noted³¹. Here we reveal pronounced GMV changes in regions within sensory, attention and default mode networks over the gestational window. In parallel, we observed increased anisotropy in white matter tracts that facilitate communication between emotional and visual processing hubs^{37–39}, including the inferior longitudinal fasciculus and inferior fronto-occipital fasciculus. Pinpointing the synchrony of gray and white matter changes that unfold in the maternal brain could be key to understanding the behavioral adaptations that emerge during and after pregnancy, such as honing the brain's visual and auditory responses to infant cues and eliciting maternal behavior. Research into other major transition periods supports this idea. For instance, adolescence is a dynamic period characterized by region-specific, nonlinear decreases in GMV and increases in WMV, maturational brain changes that are tied to gains in executive function and social cognition⁴⁰. For both adolescence⁴¹ and matrescence, the considerable rise in steroid hormone production appears to remodel the brain (see ref. 25 for comparative analysis), promoting a suite of behaviors adaptive to that life stage. How specific neural changes give rise to specific behavioral adaptations has yet to be fully explored with respect to human pregnancy.

This precision imaging study mapped neuroanatomical changes across pregnancy in a single individual, precluding our ability to generalize to the broader population. To benchmark our findings, we compared the magnitude of GMV changes observed throughout pregnancy against data from nonpregnant individuals sampled over a similar time course. Doing so provided compelling evidence that pregnancy-related neuroanatomical shifts far exceed normative day-to-day brain variability and measurement error. Evidence suggests that white matter microstructure remains fairly stable over a six-month period⁴², but more studies are needed to compare the degree of white matter changes observed during pregnancy to normative change over time. Further, sampling larger cohorts of women will generate much-needed normative models of brain change (akin to ref. 43) throughout pregnancy to establish what constitutes a typical degree of neuroanatomical change expected during gestation and postpartum recovery.

These findings provide a critical rationale for conducting further precision imaging studies of pregnancy in demographically enriched cohorts to determine the universality and idiosyncrasy of these adaptations and their role in maternal health. Are the changes observed in our participant reflective of the broader population? Do deviations from the norm lead to maladaptive outcomes? A precision imaging approach can help determine whether the pace of pregnancy-induced neuroanatomical changes drives divergent brain health outcomes in women, as may be the case during other rapid periods of brain development⁴⁴. One in five women experiences perinatal depression⁴⁵ and while the first FDA-approved treatment is now available⁴⁶, early detection remains elusive. Precision imaging studies could offer clues about an individual's risk for or resilience to depression before symptom onset, helping clinicians better determine when and how to intervene. Neuroscientists and clinicians also lack tools to facilitate detection and treatment of neurological disorders that co-occur, worsen or remit with pregnancy, such as epilepsy, headaches, multiple sclerosis and intracranial hypertension⁴⁷. Precision mapping of the maternal brain lays the groundwork for a greater understanding of the subtle and sweeping structural, functional, behavioral and clinical changes that unfold across pregnancy. Such pursuits will advance our basic

understanding of the human brain and its remarkable ability to undergo protracted plasticity in adulthood.

Online content

Any methods, additional references, Nature Portfolio reporting summaries, source data, extended data, supplementary information, acknowledgements, peer review information; details of author contributions and competing interests; and statements of data and code availability are available at <https://doi.org/10.1038/s41593-024-01741-0>.

References

- World Health Organization. Maternal, newborn, child and adolescent health and ageing. platform.who.int/data/maternal-newborn-child-adolescent-ageing (2022).
- Thornburg, K. L., Bagby, S. P. & Giraud, G. D. *Knobil and Neill's Physiology of Reproduction* pp. 1927–1955 (Elsevier, 2015).
- Brunton, P. J. & Russell, J. A. The expectant brain: adapting for motherhood. *Nat. Rev. Neurosci.* **9**, 11–25 (2008).
- Gregg, C. Pregnancy, prolactin and white matter regeneration. *J. Neurol. Sci.* **285**, 22–27 (2009).
- Haim, A. et al. A survey of neuroimmune changes in pregnant and postpartum female rats. *Brain Behav. Immun.* **59**, 67–78 (2017).
- Barrière, D. A. et al. Brain orchestration of pregnancy and maternal behavior in mice: a longitudinal morphometric study. *NeuroImage* **230**, 117776 (2021).
- Celik, A., Somer, M., Kukreja, B., Wu, T. & Kalish, B. T. The genomic architecture of pregnancy-associated plasticity in the maternal mouse hippocampus. *eNeuro* **9**, ENEURO.0117-22.2022 (2022).
- Puri, T. A., Richard, J. E. & Galea, L. A. M. Beyond sex differences: short- and long-term effects of pregnancy on the brain. *Trends Neurosci.* **46**, 459–471 (2023).
- Chaker, Z. et al. Pregnancy-responsive pools of adult neural stem cells for transient neurogenesis in mothers. *Science* **382**, 958–963 (2023).
- Diamond, M. C., Johnson, R. E. & Ingham, C. Brain plasticity induced by environment and pregnancy. *Int. J. Neurosci.* **2**, 171–178 (1971).
- Servin-Barthet, C. et al. The transition to motherhood: linking hormones, brain and behaviour. *Nat. Rev. Neurosci.* **24**, 605–619 (2023).
- Ammari, R. et al. Hormone-mediated neural remodeling orchestrates parenting onset during pregnancy. *Science* **382**, 76–81 (2023).
- Hoekzema, E. et al. Pregnancy leads to long-lasting changes in human brain structure. *Nat. Neurosci.* **20**, 287–296 (2017).
- Hoekzema, E. et al. Mapping the effects of pregnancy on resting state brain activity, white matter microstructure, neural metabolite concentrations and grey matter architecture. *Nat. Commun.* **13**, 6931 (2022).
- Martínez-García, M., Paternina-Die, M., Desco, M., Vilarroya, O. & Carmona, S. Characterizing the brain structural adaptations across the motherhood transition. *Front. Glob. Womens Health* **2**, 742775 (2021).
- Spalek, K. et al. Pregnancy renders anatomical changes in hypothalamic substructures of the human brain that relate to aspects of maternal behavior. *Psychoneuroendocrinology* **164**, 107021 (2024).
- Martínez-García, M. et al. Do pregnancy-induced brain changes reverse? The brain of a mother six years after parturition. *Brain Sci.* **11**, 168 (2021b).
- De Lange, A.-M. G. et al. Population-based neuroimaging reveals traces of childbirth in the maternal brain. *Proc. Natl Acad. Sci. USA* **116**, 22341–22346 (2019).

19. Orchard, E. R. et al. Neuroprotective effects of motherhood on brain function in late life: a resting-state fMRI study. *Cereb. Cortex* **31**, 1270–1283 (2021).
20. Oatridge, A. et al. Change in brain size during and after pregnancy: study in healthy women and women with preeclampsia. *Am. J. Neuroradiol.* **23**, 19–26 (2002).
21. Paternina-Di, M. et al. Women's neuroplasticity during gestation, childbirth and postpartum. *Nat. Neurosci.* **27**, 319–327 (2024).
22. Makris, N. et al. Decreased volume of the brain reward system in alcoholism. *Biol. Psychiatry* **64**, 192–202 (2008).
23. Filevich, E. et al. Day2day: investigating daily variability of magnetic resonance imaging measures over half a year. *BMC Neurosci.* **18**, 65 (2017).
24. Dulac, C., O'Connell, L. A. & Wu, Z. Neural control of maternal and paternal behaviors. *Science* **345**, 765–770 (2014).
25. Carmona, S. et al. Pregnancy and adolescence entail similar neuroanatomical adaptations: a comparative analysis of cerebral morphometric changes. *Hum. Brain Mapp.* **40**, 2143–2152 (2019).
26. Pawluski, J. L., Hoekzema, E., Leuner, B. & Lonstein, J. S. Less can be more: fine tuning the maternal brain. *Neurosci. Biobehav. Rev.* **133**, 104475 (2022).
27. Martínez-García, M., Jacobs, E. G., de Lange, A. M. G. & Carmona, S. Advancing the neuroscience of human pregnancy. *Nat. Neurosci.* **27**, 805–807 (2024).
28. Pritschet, L., Taylor, C. M., Santander, T. & Jacobs, E. G. Applying dense-sampling methods to reveal dynamic endocrine modulation of the nervous system. *Curr. Opin. Behav. Sci.* **40**, 72–78 (2021).
29. Taxier, L. R., Gross, K. S. & Frick, K. M. Oestradiol as a neuromodulator of learning and memory. *Nat. Rev. Neurosci.* **21**, 535–550 (2020).
30. Kohl, J. et al. Functional circuit architecture underlying parental behaviour. *Nature* **556**, 326–331 (2018). Article 7701.
31. Rodrigo, M. J. et al. Inferior fronto-temporo-occipital connectivity: a missing link between maltreated girls and neglectful mothers. *Soc. Cogn. Affect. Neurosci.* **11**, 1658–1665 (2016).
32. Pawluski, J. L., Lonstein, J. S. & Fleming, A. S. The neurobiology of postpartum anxiety and depression. *Trends Neurosci.* **40**, 106–120 (2017).
33. Barba-Müller, E., Craddock, S., Carmona, S. & Hoekzema, E. Brain plasticity in pregnancy and the postpartum period: links to maternal caregiving and mental health. *Arch. Womens Ment. Health* **22**, 289–299 (2019).
34. Barth, C. & de Lange, A.-M. G. Towards an understanding of women's brain aging: the immunology of pregnancy and menopause. *Front. Neuroendocrinol.* **58**, 100850 (2020).
35. Orchard, E. R., Rutherford, H. J. V., Holmes, A. J. & Jamadar, S. D. Matrescence: lifetime impact of motherhood on cognition and the brain. *Trends Cogn. Sci.* **27**, 302–316 (2023).
36. Duarte-Guterman, P. et al. Cellular and molecular signatures of motherhood in the adult and ageing rat brain. *Open Biol.* **13**, 230217 (2023).
37. Herbet, G., Zemmoura, I. & Duffau, H. Functional anatomy of the inferior longitudinal fasciculus: from historical reports to current hypotheses. *Front. Neuroanat.* **12**, 77 (2018).
38. Wang, Y., Metoki, A., Alm, K. H. & Olson, I. R. White matter pathways and social cognition. *Neurosci. Biobehav. Rev.* **90**, 350–370 (2018).
39. Zekelman, L. R. et al. White matter association tracts underlying language and theory of mind: an investigation of 809 brains from the Human Connectome Project. *Neuroimage* **246**, 118739 (2022).
40. Blakemore, S. J. & Choudhury, S. Development of the adolescent brain: implications for executive function and social cognition. *J. Child Psychol. Psychiatry* **47**, 296–312 (2006).
41. Blakemore, S. J., Burnett, S. & Dahl, R. E. The role of puberty in the developing adolescent brain. *Hum. Brain Mapp.* **31**, 926–933 (2010).
42. Lövdén, M. et al. Experience-dependent plasticity of white-matter microstructure extends into old age. *Neuropsychologia* **48**, 3878–3883 (2010).
43. Bethlehem, R. A. et al. Brain charts for the human lifespan. *Nature* **604**, 525–533 (2022).
44. Tooley, U. A., Bassett, D. S. & Mackey, A. P. Environmental influences on the pace of brain development. *Nat. Rev. Neurosci.* **22**, 372–384 (2021).
45. Wang, Z. et al. Mapping global prevalence of depression among postpartum women. *Transl. Psychiatry* **11**, 543 (2021).
46. Deligiannidis, K. M. et al. Zuranolone for the treatment of postpartum depression. *Am. J. Psychiatry* **180**, 668–675 (2023).
47. Shehata, H. A. & Okosun, H. Neurological disorders in pregnancy. *Curr. Opin. Obstet. Gynecol.* **16**, 117–122 (2004).
48. Mowinckel, A. M. & Vidal-Piñeiro, D. Visualization of brain statistics with R packages ggseg and ggseg3d. *Adv. Methods Pract. Psychol. Sci.* **3**, 466–483 (2020).

Publisher's note Springer Nature remains neutral with regard to jurisdictional claims in published maps and institutional affiliations.

Open Access This article is licensed under a Creative Commons Attribution 4.0 International License, which permits use, sharing, adaptation, distribution and reproduction in any medium or format, as long as you give appropriate credit to the original author(s) and the source, provide a link to the Creative Commons licence, and indicate if changes were made. The images or other third party material in this article are included in the article's Creative Commons licence, unless indicated otherwise in a credit line to the material. If material is not included in the article's Creative Commons licence and your intended use is not permitted by statutory regulation or exceeds the permitted use, you will need to obtain permission directly from the copyright holder. To view a copy of this licence, visit <http://creativecommons.org/licenses/by/4.0/>.

© The Author(s) 2024

Methods

Participant

Our participant (E.R.C.) was a healthy 38-year-old primiparous woman who underwent in-vitro fertilization (IVF) to achieve pregnancy. Previous studies reported no observable differences in neural changes from prepregnancy to postpregnancy between women who conceived naturally versus women who conceived via IVF¹³, and doing so provides a controlled way of monitoring pregnancy status. The participant experienced no pregnancy complications (for example, gestational diabetes and hypertension), delivered at full term via vaginal birth, nursed through 16 months postpartum, and had no history of neuropsychiatric diagnosis, endocrine disorders, prior head trauma or history of smoking. The participant gave written informed consent and the study was approved by the University of California, Irvine Human Subjects Committee.

Study design

The participant underwent 26 MRI scanning sessions from 3 weeks before conception through 2 years postpartum (162 weeks), during which high-resolution anatomical and diffusion spectrum imaging scans of the brain were acquired. Scans were distributed throughout this period, including prepregnancy (four scans), first trimester (four scans), second trimester (six scans), third trimester (five scans) and postpartum (seven scans; Fig. 1c). The first 6 sessions took place at the UCSB Brain Imaging Center (BIC), the final 20 sessions took place at the UCI Facility for Imaging and Brain Research (FIBRE). The majority of scans took place between 9 AM and 2 PM, limiting significant AM–PM fluctuations⁴⁹. The MRI protocol, scanner (Siemens 3T Prisma) and software (version MR E11) were identical across sites. Each scanner was checked weekly for the duration of the study and passed all QC reports indicating no significant alterations in the geometry. To ensure the robustness of the findings, after the final study session, the participant completed back-to-back validation scans at UCI and UCSB within a 12-h window to assess reliability between scanners. Intraclass correlation coefficients (two-way, random effects, absolute agreement, single rater) reveal ‘excellent’ test–retest reliability between scanners, including ROI-level GMV (ICC = 0.97, 95% CI: 0.80–0.99), ROI-level CT (ICC = 0.96, 95% CI: 0.90–0.98), MTL subfield volume (ICC = 0.99, 95% CI: 0.97–0.99) and ROI-level QA (ICC = 0.94, 95% CI: 0.91–0.97). Furthermore, when examining the relationship between gestation week and GMV among UCI-only gestational sessions, findings were consistent (Supplementary Fig. 12), indicating that site differences are highly unlikely to have contributed meaningfully to the observed effects. Although not applicable here, we note that having a control participant scanned over a similar duration within the same scanner is critical for estimating how much variation in the brain can be attributed to within-scanner variability.

To monitor state-dependent mood and lifestyle measures, the following scales were administered on each experiment day: Perceived Stress Scale⁵⁰, Pittsburgh Sleep Quality Index⁵¹, State-Trait Anxiety Inventory for Adults⁵² and Profile of Mood States⁵³. Correlation analyses between state-dependent measures, summary brain metrics and gestation week revealed little to no relationships. The only exception to this was a moderate negative association between global QA and state anxiety (Spearman’s correlation (ρ) = -0.65, q = 0.04; baseline–36 weeks, n = 16). By making this data openly accessible, we encourage a more nuanced approach toward exploring mood and lifestyle measures in relation to brain changes over pregnancy.

Endocrine procedures

The participant underwent a blood draw (n = 19; Fig. 1c) before MRI scanning. Sex steroid concentrations were determined via ultra-sensitive liquid chromatography–mass spectrometry at the Brigham and Women’s Hospital Research Assay Core (BRAC). Assay sensitivities, dynamic range and intra-assay coefficients of variation

were as follows: estradiol–1.0 pg ml⁻¹, 1–500 pg ml⁻¹, <5% relative s.d. (RSD); progesterone–0.05 ng ml⁻¹, 0.05–10 ng ml⁻¹, 9.33% RSD. Serological samples were not acquired in five sessions due to scheduling conflicts with UC Irvine’s Center for Clinical Research.

MRI acquisition. MRI scanning sessions at the University of California, Santa Barbara and Irvine were conducted on 3T Prisma scanners equipped with 64-channel phased-array head/neck coil (of which 50 coils are used for axial brain imaging). High-resolution anatomical scans were acquired using a T1-weighted (T1w) magnetization prepared rapid gradient echo (MPRAGE) sequence (repetition time (TR) = 2,500 ms, time to echo (TE) = 2.31 ms, inversion time (TI) = 934 ms, flip angle = 7°, 0.8 mm thickness) followed by a gradient echo field map (TR = 758 ms, TE1 = 4.92 ms, TE2 = 7.38 ms, flip angle = 60°). A T2-weighted (T2w) turbo spin echo scan was also acquired with an oblique coronal orientation positioned orthogonally to the main axis of the hippocampus (TR/TE = 9,860/50 ms, flip angle = 122°, 0.4 × 0.4 mm² in-plane resolution, 2-mm slice thickness, 38 interleaved slices with no gap, total acquisition time = 5 min and 42 sec). The Diffusion Spectrum Imaging (DSI) protocol sampled the entire brain with the following parameters: single phase, TR = 4,300 ms, echo time = 100.2 ms, 139 directions, b -max = 4,990, FoV = 259 × 259 mm, 78 slices, 1.7986 × 1.7986 × 1.8 mm voxel resolution. These images were linearly registered to the whole-brain T1w MPRAGE image. A custom foam headcase was used to provide extra padding around the head and neck, as well as to minimize head motion. Additionally, a custom-built sound-absorbing foam girdle was placed around the participant’s waist to attenuate sound near the fetus during second-trimester and third-trimester scanning.

Image processing. *Cortical volume and thickness.* CT and GMV were measured with Advanced Normalization Tools⁵⁴ version 2.1.0 (ANTs). We first built a subject-specific template (SST) (antsMultivariateTemplateConstruction2) and tissue priors (antsCookTemplatePriors) based on our participant’s two preconception whole-brain T1-weighted scans to examine neuroanatomical changes relative to the participant’s prepregnancy baseline. We used labels from the OASIS population template, provided by ANTs, as priors for this step. For each session, the structural image was processed and registered to the SST using the ANTs CT pipeline (antsCorticalThickness). This begins with an N4 bias field correction for field inhomogeneity, then brain extraction using a hybrid registration/segmentation method⁵⁵. Tissue segmentation was performed using Atropos⁵⁴ to create tissue masks of CSF, gray matter, white matter and deep gray matter. Atropos allows prior knowledge to guide the segmentation algorithm, and we used labels from our SST as priors to minimize warping and remain in native participant space. CT measurements were then estimated using the DiReCT algorithm⁵⁶, which estimates the gray–white matter interface and the gray matter–CSF interface and computes a diffeomorphic mapping between the two interactions, from which thickness is derived. Each gray matter tissue mask was normalized to the template and multiplied to a Jacobian image that was computed via affine and nonlinear transforms. Using MATLAB (version 2022a), summary, regional-level estimates of CT, GMV and CSF for each scan were obtained by taking the first eigenvariate (akin to a ‘weighted mean’⁵⁷) across all voxels within each parcel of the Schaefer 400-region atlas⁵⁸. We then averaged ROIs across networks, which were defined by the 17-network Schaefer scheme^{58,59}. Global measures of CT, GMV and CSF were computed for each session by summing across all voxels within the respective output image; total brain volume was computed by summing across all voxels within each session’s brain extraction mask. Our findings held when using an SST derived from all 26 MRIs (pregnancy through postpartum), as well as when estimating the mean (versus weighted mean) of all voxels within each parcel. The ANTs CT pipeline is highly validated with good test–retest reproducibility and improved ability to predict variables such as age and gender from region-wise CT measurements

compared to surface-based FreeSurfer⁵⁵. However, to reproduce our findings across software packages, we also ran the T1w data through the longitudinal FreeSurfer (v.7) CT pipeline^{60,61}, which corroborated our findings using both the Schaefer-400 (Supplementary Fig. 2 and Supplementary Tables 1 and 4) and popular Desikan–Killiany⁶² (Supplementary Table 3) cortical parcellations. Whole-brain T1w-based subcortical volume estimates (including cerebellum and lateral ventricles) were also derived using this FreeSurfer pipeline, wherein we derived 28 region-of-interest estimates via the commonly used ‘aseg’ parcellation scheme⁶³ (Supplementary Fig. 6a). A complete reporting of findings can be found in Supplementary Data 1.

Mean framewise displacement (FWD) estimates from gestation sessions with a 10-min resting-state scan ($n = 18$) were used to indirectly assess whether motion increased throughout pregnancy. Average FWD (mm) was extremely minimal across the entire experiment ($M = 0.13$, s.d. = 0.02, range = 0.09–0.17) and varied only slightly by pregnancy stage (pre, $M = 0.11$ and s.d. = 0.004; first, $M = 0.11$ and s.d. = 0.01; second, $M = 0.13$ and s.d. = 0.02; third, $M = 0.16$ and s.d. = 0.007; post, $M = 0.13$ and s.d. = 0.01). While mean FWD did correspond with gestation week ($r = 0.88$, $P < 0.001$), controlling for this did not alter our main findings (for example, total GMV remained negatively associated with gestation after partial correlation with FWD ($r = -0.87$ and $P < 0.001$) because motion differences between stages were minuscule (Supplementary Fig. 4a).

As a further test of the robustness of the dataset, we ran QC assessments on all T1w images using the IQMs pipeline⁶⁴ from MRIQC (version 23.1). Assessments of interest included (1) coefficient of joint variation (CJV), (2) signal-to-noise ratio for gray matter (SNR) and (3) contrast-to-noise ratios (CNR). All QC metrics fell within expected standard ranges⁶⁵ (Supplementary Fig. 4b–d). Although relationships existed between gestation week and QC measures (CJV, $r = 0.70$ and $P < 0.001$; SNR and CNR, $r = -0.83$ and $P < 0.001$), including these variables in the regression models did not detract from our finding suggesting cortical GMV reductions occur over gestation, especially within regions belonging to attention and somatosensory networks (Supplementary Fig. 5). When looking across all MRIQC outputs, discrepancies were noted in session seven (gestation week nine, first trimester). Removing this day from the analyses only strengthened observed relationships between cortical volume and gestation; however, for completeness, data from this day is included in the main findings. These QC outputs for each session of the experiment can be found in Supplementary Data 1. Finally, we used FreeSurfer’s Euler number to evaluate a field-standard quantitative assessment of each T1w structural image⁶⁶. We observed no significant relationships between the Euler number and gestation week or summary brain metrics. A discrepancy (for example, two s.d. below average) was noted in session eight; however, again, removing this session did not detract from our main findings showing reductions in GMV over gestation.

Hippocampal segmentation. T1- and T2-weighted images ($n = 25$) were submitted to the automatic segmentation of hippocampal subfields package (ASHS⁶⁷, version July 2018) for parcellation of seven MTL subregions: CA1, CA2/CA3, dentate gyrus, subiculum, perirhinal cortex, entorhinal cortex and PHC (Supplementary Fig. 6b). The ASHS segmentation pipeline automatically segmented the hippocampus in the T2w MRI scans using a segmented population atlas, the Princeton Young Adult 3T ASHS Atlas template⁶⁸ ($n = 24$, mean age = 22.5 years). A rigid-body transformation aligned each T2w image to the respective T1w scan for each day. Using ANTs deformable registration, the T1w was registered to the population atlas. The resulting deformation fields were used to resample the data into the space of the left and right template MTL ROI. Within each template ROI, each of the T2w scans of the atlas package was registered to that day’s T2w scan. The manual atlas segmentations were then mapped into the space of the T2w scan, with segmentation of the T2w scan computed using joint

label fusion⁶⁹. Finally, the corrective learning classifiers contained in ASHS were applied to the consensus segmentation produced by joint label fusion. The output of this step is a corrected segmentation of the T2w scan. Further description of the ASHS protocol can be found here⁶⁷. T2w scans and segmentations were first visually examined using ITK-SNAP⁷⁰ for quality assurance and then subjected to manual editing in native space using ITK-SNAP (v.3.8.0-b; C.M.T.). One session (scan 15, third trimester) was discarded due to erroneous scan orientation. The anterior extent of the segmented labels was anchored 4 mm (two slices) anterior to the appearance of the limen insulae, and the posterior extent was anchored to the disappearance of hippocampal gray matter from the trigone of the lateral ventricle. Boundaries between perirhinal, entorhinal and parahippocampal cortices were established in keeping with the Olsen–Amaral–Palombo (OAP) segmentation protocol⁷¹. In instances where automatic segmentation did not clearly correspond to the underlying neuroanatomy, such as when a certain label was missing several gray matter voxels, manual retouching allowed for individual voxels to be added or removed. All results are reported using the manually retouched subregion volumes to ensure the most faithful representation of the underlying neuroanatomy. Scans were randomized and segmentation was performed in a random order, blind to pregnancy stage. To assess intrarater reliability for the present analyses, two days underwent manual editing a second time. The generalized Dice similarity coefficient⁷² across subregions was 0.87 and the intraclass correlation coefficient was 0.97, suggesting robust reliability in segmentation.

White matter microstructure. Diffusion scans were preprocessed using the automation software QSIprep (version 0.16.1) compiled using a singularity container⁷³ and run primarily with the default parameters, with the exceptions ‘–output resolution 1.8’, ‘–dwi denoise window 5’, ‘–force-spatial-normalization’, ‘–hmc model 3dSHORE’, ‘–hmc-transform Rigid’ and ‘–shoreline iters 2’. Twenty-three sessions were preprocessed and analyzed, with the remaining three scans excluded due to missing DSI scans (sessions 9 and 15) or corresponding field map for distortion correction (session 7). Despite passing QC assessments during preprocessing, visual inspection of the field maps in session 10 revealed a slight artifact. However, removal of this session had minimal impact on the overall results and remained in the final analyses. T1w images were corrected for intensity nonuniformity (N4BiasFieldCorrection) and skull-stripped (antsBrainExtraction). The images underwent spatial normalization and registration to the ICBM 152 Nonlinear Asymmetric template. Finally, brain tissue segmentation of CSF, GM and WM was performed on each brain-extracted T1w using FMRIB’s Automated Segmentation Tool (FAST). Preprocessing of diffusion images began by implementing MP-PCA denoising with a 5-voxel window using MRtrix3’s dwidenoise function. B1 field inhomogeneity was corrected using dwibiascorrect from MRtrix3 with the N4 algorithm. Motion was corrected using the SHORELine method. Susceptibility distortion correction was based on GRE field maps. Preprocessed Nifti scans were prepared for tractography using DSI Studio via singularity container version Chen-2022-07-31 (ref. 74). Diffusion images were converted to source code files using the DSI Studio command line ‘--action=src’ and a custom script to convert all images. The diffusion data were reconstructed in MNI space using q-space diffeomorphic reconstruction⁷⁵ with a diffusion sampling of 1.25 and output resolution of 1.8 mm isotropic. The following output metrics were specified to be included in the output FIB file: QA and mean diffusivity (MD). The quality and integrity of reconstructed images were assessed using ‘QC1: SRC Files Quality Control’. First, the consistency of image dimension, resolution, DWI count and shell count was checked for each image. Second, each image was assessed for the ‘neighboring DWI correlation’ which calculates the correlation coefficient of low b DWI volumes that have similar gradient direction. Lower correlation values may indicate issues with the diffusion signal due to artifacts or head motion. Finally, DSI Studio

performed an outlier check, labeling images as a ‘low-quality outlier’ if the correlation coefficient was >3 s.d. from the absolute mean. None of our scans were flagged as outliers. The reconstructed participant files were aggregated into one connectometry database per metric.

Day2Day control dataset. To compare our findings against a control group of nonpregnant densely-sampled individuals, we used the Day2Day dataset²³ which offered comparable whole-brain T1 and T2 MTL scans for eight participants (two male) scanned 12–50 times over 2–7 months. Each participant was run through the ANTs CT and ASHS processing pipelines as outlined above (‘Cortical volume and thickness’ and ‘Hippocampal segmentation’). To note, for each participant, we created an SST based on their first two sessions for consistency with the primary dataset; subfield volumes for the T2 MTL scans did not undergo manual retouching. Due to missing header information on the publicly available diffusion scans, we were unable to benchmark our white matter changes with the Day2Day dataset.

Statistical analysis. Statistical analyses were conducted using R (sMRI; version 3.4.4) and DSI Studio (dMRI; Chen-2022-07-31).

Summary brain metrics. To reflect the existing literature, we first explored brain metrics across the entire study duration (prepregnancy through postpartum, $n = 26$ scans). When including all sessions, total brain volume, GMV, CT, global QA, ventricle volume and CSF displayed nonlinear trends over time; therefore, we used generalized additive models (GAM; cubic spline basis, $k = 10$, smoothing = GCV), a method of nonparametric regression analysis (R package, *mgcv*⁷⁶), to explore the relationship between summary brain metrics (outcome variables) and gestation week (smooth term). Each model underwent examination (*gam.check* function) to ensure it was correctly specified with regards to (1) the choice of basis dimension (k) and (2) the distribution of model residuals (see *mgcv* documentation in ref. 76). The general pattern of results held after toggling model parameters; however, we note the risk of overinterpreting complex models with small sample sizes⁷⁷. To address overfitting and cross-validate our basis type selection, we also fit the data using nonpenalized general linear models (GLM) with both linear and polynomial terms for gestation week. We compared the performance of each GLM (that is, models using only a linear term versus models with polynomial terms) via the Akaike information criterion (AIC), which revealed that cubic models consistently outperformed both linear and quadratic models ($AIC_{diff} > 3$), providing additional evidence for nonlinear changes in structural brain variables over time. Determining whether these patterns replicate in larger cohorts and whether complex models are better suited to capture data patterns across individuals will be a necessary next step.

Cortical GMV and CT. We then narrowed our analyses to the first 19 sessions (baseline–36 weeks gestation) to assess novel brain changes occurring over the gestational window. We first computed Pearson’s product-moment correlation matrices between the following variables: gestation week, estradiol, progesterone and the 17 network-level average GMV values. We then ran a multivariate regression analysis predicting ROI-level GMV changes by gestation week. To identify which regions were changing at a rate different from the global decrease, we then ran the analyses again to include total GMV in the regression model (Supplementary Table 2). This was extended to the network level, where we ran partial correlations accounting for total GMV. These same analyses were then run with CT measures. Globally-corrected results provided in Supplementary Tables 1–5. Percent change at the network level was computed by subtracting the final pregnancy value (36 weeks pregnant) from the first prepregnancy baseline value, then dividing that difference by said first prepregnancy baseline value. All analyses underwent multiple comparisons testing (false discovery rate (FDR)-corrected at $q < 0.05$).

Subcortical GMV. A similar statistical approach was taken for subcortical volume estimates. We ran a multivariate regression analysis predicting GMV changes over gestation in 28 ROIs (Supplementary Fig. 6a) by gestation week (FDR-corrected at $q < 0.05$).

To evaluate the relationship between gestation week and MTL subregion volume over pregnancy ($n = 7$ bilateral subregions and $n = 18$ MTL scans), we used a combination of linear and nonlinear models based on individual subregion data patterns. Models were compared for best fit with each subregion via AIC from the GLM output (as described in ‘Summary brain metrics’). A linear regression model was most appropriate for PHC ($AIC_{diff} < 3$), whereas a quadratic model performed best for CA1 and CA2/CA3. As a control, we repeated the analyses with MTL subregion volumes after proportional volume correction of total GMV calculated by ASHS. Finally, we evaluated the relationship between endogenous sex hormones (estrogen and progesterone) and subregion volumes using linear regression. Relationships were considered significant only if they met FDR correction at $q < 0.05$.

White matter microstructure. DSI Studio’s correlational tractography⁷⁴ was used to analyze the relationship between white matter structure and gestational week ($n = 16$). A truncated model was run to examine the relationship between white matter and sex steroid hormones ($n = 14$) for the subset of diffusion scans with paired endocrine data during gestation. A nonparametric Spearman’s correlation was used to derive the correlation between gestational week and endocrine factors and our metrics of interest (QA and MD; see Supplementary Table 9 and Supplementary Fig. 10 for MD results) because the data were not normally distributed. Statistical inference was reached using connectometry, a permutation-based approach that tests the strength of coherent associations found between the local connectome and our variables of interest. It provides higher reliability and replicability by correcting for multiple comparisons. This technique provides a high-resolution characterization of local axonal orientation. The correlational tractography was run with the following parameters: t score threshold of 2.5, four pruning iterations and a length threshold of 25 voxel distance. To estimate the FDR, a total of 4,000 randomized permutations were applied to obtain the null distribution of the track length. Reported regions were selected based on FDR cutoff ($FDR < 0.2$, suggested by DSI Studio), and contained at least ten tracts. For visualization of global and tract QA at each gestational stage, mean QA values were extracted using DSI Studio’s whole-brain fiber tracking algorithm and ROI-based tracking using the default HCP842 atlas⁷⁸.

Day2Day dataset: measurement variability. To establish a marker of normative variability over half a year, we computed metrics of measurement variability using the Day2Day dataset²³, which provided both whole-brain T1 and high-resolution T2 MTL scans. For each region, j , of the Schaefer parcellation, we assessed across-session variability, ε_j , as

$$\varepsilon_j = 100 \times \text{mean} \left(\frac{|t_s - \bar{t}|}{\bar{t}} \right)$$

Where t_s is the morphometric measurement of a parcel for session s and \bar{t} is the mean of t across sessions^{55,79}. Thus, we defined variability as the mean absolute percent difference between each individual and the mean across sessions. Across-session variability estimates for all 400 regions were then averaged across eight participants, and a global measure of cortical GMV variability was computed by averaging across the 400 regions. This approach was repeated independently for the T2 hippocampal scans, wherein we computed across-session variability for each parcel of the ASHS parcellation scheme ($n = 7$ bilateral subfields). However, it is important to note that raw subfield values (that is, no manual retouching) were used for Day2Day variability assessments and should be interpreted with caution. Finally, to better compare against our own data, we repeated this approach using our

participant's first two baseline scans (that is, preconception) to derive within-participant variability estimates.

Benchmarking our data in this way allows us to capture the degree of change expected due to factors such as image processing and instrumentation variability or other day-to-day changes that could potentially modulate brain size and shape (see ref. 80 for review). The percent change observed over pregnancy (baseline versus 36 weeks gestation) far exceeds the expected variability estimated using both the Day2Day dataset (Supplementary Fig. 11) and our within-participant control data. This was quantified by dividing the observed percent change in GMV metrics (baseline versus 36 weeks) by the global measure of GMV percent variability of each control group (that is, Day2Day, within-participant control), independently for cortex and subcortex.

Reporting summary

Further information on research design is available in the Nature Portfolio Reporting Summary linked to this article.

Data availability

The dataset consists of 26 MRI scans (T1w, T2w and diffusion scans) alongside state-dependent measures and serum assessments of ovarian sex hormones for each session. The raw data is publicly available at <https://openneuro.org/datasets/ds005299>. Source data are provided with this paper.

Code availability

No custom code was used.

References

49. Karch, J. D. et al. Identifying predictors of within-person variance in MRI-based brain volume estimates. *NeuroImage* **200**, 575–589 (2019).
50. Cohen, S., Kamarck, T. & Mermelstein, R. A global measure of perceived stress. *J. Health Soc. Behav.* **24**, 385–396 (1983).
51. Buisse, D. J., Reynolds, C. F. III, Monk, T. H., Berman, S. R. & Kupfer, D. J. The Pittsburgh sleep quality index: a new instrument for psychiatric practice and research. *Psychiatry Res.* **28**, 193–213 (1989).
52. Spielberger, C. D. & Vagg, P. R. Psychometric properties of the STAI: a reply to Ramanaiah, Franzen, and Schill. *J. Pers. Assess.* **48**, 95–97 (1984).
53. Pollock, V., Cho, D. W., Reker, D. & Volavka, J. Profile of mood states: the factors and their physiological correlates. *J. Nerv. Ment. Dis.* **167**, 612–614 (1979).
54. Avants, B. B. et al. A reproducible evaluation of ANTs similarity metric performance in brain image registration. *NeuroImage* **54**, 2033–2044 (2011).
55. Tustison, N. J. et al. Large-scale evaluation of ANTs and FreeSurfer cortical thickness measurements. *NeuroImage* **99**, 166–179 (2014).
56. Das, S. R., Avants, B. B., Grossman, M. & Gee, J. C. Registration based cortical thickness measurement. *NeuroImage* **45**, 867–879 (2009).
57. Friston, K. J., Rotshtein, P., Geng, J. J., Sterzer, P. & Henson, R. N. A critique of functional localisers. *NeuroImage* **30**, 1077–1087 (2006).
58. Schaefer, A. et al. Local-global parcellation of the human cerebral cortex from intrinsic functional connectivity MRI. *Cereb. Cortex* **28**, 3095–3114 (2018).
59. Yeo, B. T. et al. The organization of the human cerebral cortex estimated by intrinsic functional connectivity. *J. Neurophysiol.* **106**, 1125–1165 (2011).
60. Dale, A. M., Fischl, B. & Sereno, M. I. Cortical surface-based analysis: I. Segmentation and surface reconstruction. *NeuroImage* **9**, 179–194 (1999).
61. Reuter, M., Schmansky, N. J., Rosas, H. D. & Fischl, B. Within-subject template estimation for unbiased longitudinal image analysis. *NeuroImage* **61**, 1402–1418 (2012).
62. Desikan, R. S. et al. An automated labeling system for subdividing the human cerebral cortex on MRI scans into gyral based regions of interest. *NeuroImage* **31**, 968–980 (2006).
63. Fischl, B. et al. Whole brain segmentation: automated labeling of neuroanatomical structures in the human brain. *Neuron* **33**, 341–355 (2002).
64. Esteban, O. et al. MRIQC: advancing the automatic prediction of image quality in MRI from unseen sites. *PLoS ONE* **12**, e0184661 (2017).
65. Esteban, O. et al. MRIQC Web-API: crowdsourcing image quality metrics and expert quality ratings of structural and functional MRI. Preprint at *bioRxiv* <https://doi.org/10.1101/216671> (2017).
66. Rosen, A. F. et al. Quantitative assessment of structural image quality. *NeuroImage* **169**, 407–418 (2018).
67. Yushkevich, P. A. et al. Automated volumetry and regional thickness analysis of hippocampal subfields and medial temporal cortical structures in mild cognitive impairment. *Hum. Brain Mapp.* **36**, 258–287 (2015).
68. Aly, M. & Turk-Browne, N. B. Attention stabilizes representations in the human hippocampus. *Cereb. Cortex* **26**, 783–796 (2016).
69. Wang, H. et al. Multi-atlas segmentation with joint label fusion. *IEEE Trans. Pattern Anal. Mach. Intell.* **35**, 611–623 (2013).
70. Yushkevich, P. A. et al. User-guided 3D active contour segmentation of anatomical structures: significantly improved efficiency and reliability. *NeuroImage* **31**, 1116–1128 (2006).
71. Palombo, D. J. et al. KIBRA polymorphism is associated with individual differences in hippocampal subregions: evidence from anatomical segmentation using high-resolution MRI. *J. Neurosci.* **33**, 13088–13093 (2013).
72. Crum, W. R., Camara, O. & Hill, D. L. Generalized overlap measures for evaluation and validation in medical image analysis. *IEEE Trans. Med. Imaging* **25**, 1451–1461 (2006).
73. Cieslak, M. et al. QSIprep: an integrative platform for preprocessing and reconstructing diffusion MRI data. *Nat. Methods* **18**, 775–778 (2021).
74. Yeh, F. C., Badre, D. & Verstynen, T. Connectometry: a statistical approach harnessing the analytical potential of the local connectome. *NeuroImage* **125**, 162–171 (2016).
75. Yeh, F. C. & Tseng, W. Y. I. NTU-90: a high angular resolution brain atlas constructed by q-space diffeomorphic reconstruction. *NeuroImage* **58**, 91–99 (2011).
76. Wood, S. N. *Generalized Additive Models: An Introduction With R, Second Edition* (Chapman and Hall/CRC, 2017).
77. Sullivan, K. J., Shadish, W. R. & Steiner, P. M. An introduction to modeling longitudinal data with generalized additive models: applications to single-case designs. *Psychol. Methods* **20**, 26–42 (2015).
78. Yeh, F. C., Verstynen, T. D., Wang, Y., Fernández-Miranda, J. C. & Tseng, W. Y. I. Deterministic diffusion fiber tracking improved by quantitative anisotropy. *PLoS ONE* **8**, e80713 (2013).
79. Jovicich, J. et al. Brain morphometry reproducibility in multi-center 3T MRI studies: a comparison of cross-sectional and longitudinal segmentations. *NeuroImage* **83**, 472–484 (2013).
80. Hedges, E. P. et al. Reliability of structural MRI measurements: the effects of scan session, head tilt, inter-scan interval, acquisition sequence, FreeSurfer version and processing stream. *NeuroImage* **246**, 118751 (2022).

Acknowledgements

The authors would like to thank M. Mendoza for his phlebotomy and MRI assistance at the UCSB Brain Imaging Center; C. Stark and R. Tain for MRI assistance at the UCI Facility for Imaging and Brain

Research (FIBRE) and the UCI Institute for Clinical and Translational Science for phlebotomy assistance; B. Tranquada-Torres, R. Woodry and N. Hatamian for their assistance with data collection, as well as P. Mozayeni, C. Taylor, B. Peng and P.J.C. Peng for their support; and S. Kühn and colleagues at the Max Planck Institute for Human Development for creating the Day2Day dataset and sharing it with our team. The authors would also like to thank M. Martínez-García, S. Carmona, S. Grafton, J. Gonzalez-Castillo and P. Bandettini for their insightful discussions and feedback on this project. This study was supported by the Ann S. Bowers Women's Brain Health Initiative (to E.G.J. and C.T.), UC Irvine Campus Funds (to E.R.C.), UC Academic Senate (to E.G.J.), ReproGrants (to H.G., E.G.J. and E.R.C.), NIH F99AG07979 (to L.P.), NIH T32 AG00096-40 (to D.C.), NIH AG063843 (to E.G.J.) and NIH ZIAMH002783 (to J.F. and D.A.H.).

Author contributions

L.P., C.M.T., E.R.C. and E.G.J. conceived the overall study. L.P., C.M.T., D.C., T.S., E.L., E.R.C. and E.G.J. performed the experiments. L.P., C.M.T., D.C., J.F., T.S., D.A.H., E.R.C. and E.G.J. conceived the data analysis strategy. L.P., C.M.T. and D.C. implemented the data analysis strategy.

L.P., C.M.T., D.C., E.R.C. and E.G.J. wrote the manuscript. J.F., T.S., H.G., D.A.H. and E.L. edited the manuscript.

Competing interests

The authors declare no competing interests.

Additional information

Supplementary information The online version contains supplementary material available at <https://doi.org/10.1038/s41593-024-01741-0>.

Correspondence and requests for materials should be addressed to Laura Pritschet, Elizabeth R. Chrastil or Emily G. Jacobs.

Peer review information *Nature Neuroscience* thanks Jessica Bernard and the other, anonymous, reviewer(s) for their contribution to the peer review of this work.

Reprints and permissions information is available at www.nature.com/reprints.

Reporting Summary

Nature Portfolio wishes to improve the reproducibility of the work that we publish. This form provides structure for consistency and transparency in reporting. For further information on Nature Portfolio policies, see our [Editorial Policies](#) and the [Editorial Policy Checklist](#).

Statistics

For all statistical analyses, confirm that the following items are present in the figure legend, table legend, main text, or Methods section.

n/a Confirmed

- The exact sample size (n) for each experimental group/condition, given as a discrete number and unit of measurement
- A statement on whether measurements were taken from distinct samples or whether the same sample was measured repeatedly
- The statistical test(s) used AND whether they are one- or two-sided
Only common tests should be described solely by name; describe more complex techniques in the Methods section.
- A description of all covariates tested
- A description of any assumptions or corrections, such as tests of normality and adjustment for multiple comparisons
- A full description of the statistical parameters including central tendency (e.g. means) or other basic estimates (e.g. regression coefficient) AND variation (e.g. standard deviation) or associated estimates of uncertainty (e.g. confidence intervals)
- For null hypothesis testing, the test statistic (e.g. F , t , r) with confidence intervals, effect sizes, degrees of freedom and P value noted
Give P values as exact values whenever suitable.
- For Bayesian analysis, information on the choice of priors and Markov chain Monte Carlo settings
- For hierarchical and complex designs, identification of the appropriate level for tests and full reporting of outcomes
- Estimates of effect sizes (e.g. Cohen's d , Pearson's r), indicating how they were calculated

Our web collection on [statistics for biologists](#) contains articles on many of the points above.

Software and code

Policy information about [availability of computer code](#)

Data collection

All data collection was done on a Siemens 3T Prisma with software version MR E11. All sequences were standard Siemens protocols, with the exception to the T2-hippocampal scan: A T2-weighted (T2w) turbo spin echo (TSE) scan was also acquired with an oblique coronal orientation positioned orthogonally to the main axis of the hippocampus (TR/TE = 9860/50 ms, flip angle = 122°, 0.4 × 0.4 mm² in-plane resolution, 2 mm slice thickness, 38 interleaved slices with no gap, total acquisition time = 5:42 min). No other custom software was used for data collection.

Data analysis

The following software packages were used:
 Advanced Normalization Tools (ANTs), version 2.1.0
 FreeSurfer, version 7
 Automatic Segmentation of Hippocampal Subfields (ASHS), version 7/2018
 IQM Pipeline from MRIQC, version 23.1
 Matlab, version 2022a
 QSIprep, version 0.15.3
 DSI Studio, version Chen-2022-07-31
 R/R Studio, version 3.4.4
 ITK-SNAP, v.3.8.0-b

For manuscripts utilizing custom algorithms or software that are central to the research but not yet described in published literature, software must be made available to editors and reviewers. We strongly encourage code deposition in a community repository (e.g. GitHub). See the Nature Portfolio [guidelines for submitting code & software](#) for further information.

Data

Policy information about [availability of data](#)

All manuscripts must include a [data availability statement](#). This statement should provide the following information, where applicable:

- Accession codes, unique identifiers, or web links for publicly available datasets
- A description of any restrictions on data availability
- For clinical datasets or third party data, please ensure that the statement adheres to our [policy](#)

The dataset consists of 26 MRI scans (T1w, T2w, and diffusion scans) alongside state-dependent measures and serum assessments of ovarian sex hormones for each session. The data is publicly available on <https://openneuro.org/datasets/ds005299>.

Research involving human participants, their data, or biological material

Policy information about studies with [human participants or human data](#). See also policy information about [sex, gender \(identity/presentation\), and sexual orientation](#) and [race, ethnicity and racism](#).

Reporting on sex and gender	Our study focused on a single female participant to explore how pregnancy shapes the human brain.
Reporting on race, ethnicity, or other socially relevant groupings	The subject was white.
Population characteristics	This was a precision imaging study of one 38-year old primiparous woman.
Recruitment	Our participant (corresponding author E.R.C.) was a healthy primiparous woman who underwent in-vitro fertilization (IVF) to achieve pregnancy. The project was conceived by E.R.C. and she wished to use herself as the participant, as has been done in previous "dense-sampling" studies (cf. Poldrack et al., 2015; Pritschet et al., 2020).
Ethics oversight	The participant gave written informed consent and the study was approved by the University of California, Irvine Human Subjects Committee.

Note that full information on the approval of the study protocol must also be provided in the manuscript.

Field-specific reporting

Please select the one below that is the best fit for your research. If you are not sure, read the appropriate sections before making your selection.

- Life sciences Behavioural & social sciences Ecological, evolutionary & environmental sciences

For a reference copy of the document with all sections, see [nature.com/documents/nr-reporting-summary-flat.pdf](https://www.nature.com/documents/nr-reporting-summary-flat.pdf)

Life sciences study design

All studies must disclose on these points even when the disclosure is negative.

Sample size	We used precision imaging to deeply-phenotype, densely-sample an individual over the gestational window. As this study was the first of its kind, our sample size was an N=1 design. Although this limits the generalizability of our findings, this project serves as a proof-of-concept, showcasing the value and feasibility of studying a woman's brain during the transition to motherhood.
Data exclusions	no history of neuropsychiatric diagnosis, endocrine disorders, prior head trauma or history of smoking
Replication	This is the first study of its kind; therefore, there are no study replications as of yet. However, to reproduce our results internally across software packages, we also ran the T1w data through the longitudinal FreeSurfer cortical thickness pipeline (Dale et al., 1999), which corroborated our finding that gray matter volume declines throughout gestation (e.g., successful internal replication). This pattern of results not only held across software packages, but also brain parcellations (e.g., Schaefer 400-cortical atlas and Desikan-Killiany cortical atlas).
Randomization	This was an observational study design, and therefore not randomized.
Blinding	For medial temporal lobe segmentation, scans were randomized and segmentation was performed in a random order, blind to pregnancy stage. No other blinding was applicable, given the observational study of brain changes in response to advancing gestational week.

Reporting for specific materials, systems and methods

We require information from authors about some types of materials, experimental systems and methods used in many studies. Here, indicate whether each material, system or method listed is relevant to your study. If you are not sure if a list item applies to your research, read the appropriate section before selecting a response.

Materials & experimental systems

n/a	Involvement
<input checked="" type="checkbox"/>	<input type="checkbox"/> Antibodies
<input checked="" type="checkbox"/>	<input type="checkbox"/> Eukaryotic cell lines
<input checked="" type="checkbox"/>	<input type="checkbox"/> Palaeontology and archaeology
<input checked="" type="checkbox"/>	<input type="checkbox"/> Animals and other organisms
<input checked="" type="checkbox"/>	<input type="checkbox"/> Clinical data
<input checked="" type="checkbox"/>	<input type="checkbox"/> Dual use research of concern
<input checked="" type="checkbox"/>	<input type="checkbox"/> Plants

Methods

n/a	Involvement
<input checked="" type="checkbox"/>	<input type="checkbox"/> ChIP-seq
<input checked="" type="checkbox"/>	<input type="checkbox"/> Flow cytometry
<input type="checkbox"/>	<input checked="" type="checkbox"/> MRI-based neuroimaging

Magnetic resonance imaging

Experimental design

Design type	Structural & Diffusion MRI
Design specifications	No task-based fMRI used in this manuscript.
Behavioral performance measures	N/A; no performance metrics collected

Acquisition

Imaging type(s)	Structural
Field strength	3
Sequence & imaging parameters	High-resolution anatomical scans were acquired using a T1-weighted (T1w) magnetization prepared rapid gradient echo (MPRAGE) sequence (TR = 2500 ms, TE = 2.31 ms, T1 = 934 ms, flip angle = 7°, 0.8 mm thickness) followed by a gradient echo fieldmap (TR = 758 ms; TE1 = 4.92 ms; TE2 = 7.38 ms; flip angle = 60°). A T2-weighted (T2w) turbo spin echo (TSE) scan was also acquired with an oblique coronal orientation positioned orthogonally to the main axis of the hippocampus (TR/TE = 9860/50 ms, flip angle = 122°, 0.4 × 0.4 mm ² in-plane resolution, 2 mm slice thickness, 38 interleaved slices with no gap, total acquisition time = 5:42 min).
Area of acquisition	T1-weighted and dMRI scans = whole-brain T2-weighted scan = high-resolution imaging of medial temporal lobe
Diffusion MRI	<input checked="" type="checkbox"/> Used <input type="checkbox"/> Not used
Parameters	TR = 4300 ms, echo time = 100.2 ms, 139 directions, b-max = 4990, FoV = 259 x 259 mm, 78 slices, 1.7986 x 1.7986 x 1.8 mm voxel resolution

Preprocessing

Preprocessing software	<p>Gray Matter Volume & Cortical Thickness: Advanced Normalization Tools (ANTs), version 2.1.0 FreeSurfer, version 7</p> <p>T2-weighted MTL scans: Automatic Segmentation of Hippocampal Subfields (ASHS), version 7/2018</p> <p>Diffusion imaging: QSIprep, version 0.15.3 DSI Studio, version Chen-2022-07-31</p>
Normalization	<p>Normalization differed by modality due to inherent limitations of applicable processing pipelines.</p> <p>Gray Matter Volume & Cortical Thickness: All analyses were kept in native subject-space to limit the amount of warping and leverage the advantages of a precision imaging design.</p> <p>T2-weighted MTL scans: T2w images were registered to the segmentation template (see below) using ANTs deformable registration.</p> <p>Diffusion imaging: Initial preprocessing through QSIprep normalized diffusion images to the skull-stripped T1w images. Diffusion images were then reconstructed in MNI space using DSI studio's Q-space Diffeomorphic Reconstruction.</p>

Normalization template	<p>T2-weighted MTL scans: Princeton Young Adult 3T ASHS Atlas Template (n=24, mean age = 22.5; Aly & Turk-Browne, 2016).</p> <p>Diffusion imaging: All diffusion images were reconstructed using the ICBM152 template.</p>
Noise and artifact removal	<p>Gray Matter Volume & Cortical Thickness: All T1-weighted images underwent denoising ('denoiseImage') and N4 bias field correction ('N4BiasFieldCorrection') for field inhomogeneity via ANTs.</p> <p>T2-weighted MTL scans: All T2-weighted MTL images underwent denoising ('denoiseImage') via ANTs.</p> <p>Diffusion: All diffusion images underwent denoising, motion and distortion correction using MRtrix3's <code>dwidenoise</code> and <code>dwibiascorrect</code> with the N4 algorithm. All diffusion images were quality checked using DSI studio's 'QC1: SRC Files Quality Control'. All images passed QC checks.</p> <p>Motion: Mean framewise displacement (FWD) estimates from gestation sessions with a 10-minute resting state scan (n = 18) were used to indirectly assess whether motion increased throughout pregnancy. Average FWD (millimeters) was extremely minimal across the entire experiment (M = 0.13, SD = 0.02, range = 0.09–0.17) and varied only slightly by pregnancy stage (pre: M = 0.11, SD = 0.004; first: M = 0.11, SD = 0.01; second: M = 0.13, SD = 0.02; third: M = 0.16, SD = 0.007; post: M = 0.13, SD = 0.01). While mean FWD did correspond with gestation week (r = 0.88, p < .001), controlling for this did not alter our main findings (e.g., total GMV negatively associated with gestation; partial correlation: r = -0.87, p < 0.001) owing to the fact that motion differences between stages were minuscule.</p>
Volume censoring	<p>Gray Matter Volume & Cortical Thickness: All images were visually assessed for QC. Further, we computed quality control (QC) assessments on all T1w images using the IQMs pipeline from MRIQC (Esteban et al., 2017). Metrics of interest included 1) coefficient of joint variation (CJV), 2) signal-to-noise ratio for gray matter (SNR), and 3) contrast-to-noise ratios (CNR). All QC metrics fell within expected standard ranges. We also used FreeSurfer's Euler number to evaluate a field-standard quantitative assessment of each T1w structural image. We observed no significant relationships between the Euler number and gestation week or summary brain metrics. A discrepancy (e.g., 2 SD below average) was noted in session eight; however, again, removing this session did not detract from our main findings showing reductions in gray matter volume over gestation.</p> <p>T2-weighted MTL scans: Volumes were visually assessed for QC. Volumes were removed from the analysis if unable to be reliably segmented.</p> <p>Diffusion imaging: All images were assessed using the DSI studio quality control and a visual inspection. DSI studio performed an outlier check, labeling images as a "low quality outlier" if the correlation coefficient was greater than 3 standard deviations from the absolute mean. No images were labeled as a low quality outlier.</p>

Statistical modeling & inference

Model type and settings	<p>Summary brain metrics: To reflect the existing literature, we first explored brain metrics across the entire study duration (pre-conception through postpartum). When including all sessions, total brain volume, GMV, CT, global QA, ventricle volume and CSF displayed non-linear trends over time; therefore, we used generalized additive models (GAM; cubic spline basis, k = 10, smoothing = GCV), a method of non-parametric regression analysis (R package: <code>mgcv</code>), to explore the relationship between summary brain metrics (outcome variables) and gestation week (smooth term). Each model underwent examination (<code>gam.check</code> function) to ensure it was correctly specified with regards to 1) the choice of basis dimension (k) and 2) the distribution of the model residuals (see <code>mgcv</code> documentation; Wood, 2017). The general pattern of results held after toggling model parameters; however, we note the risk of overinterpreting complex models with small sample sizes (see Sullivan et al., 2015). To address overfitting and cross-validate our basis type selection, we also fit the data using nonpenalized general linear models (GLM) with both linear and polynomial terms for gestation week. We compared the performance of each GLM (i.e., models using only a linear term vs. models with polynomial terms) via the Akaike information criterion (AIC), which revealed that cubic models consistently outperformed both linear and quadratic models (AICdiff > 3), providing additional evidence for non-linear changes in structural brain variables over time.</p> <p>Gray Matter Volume & Cortical Thickness: We first computed Pearson's product-moment correlation matrices between the following variables (n = 19 pregnancy scans): gestation week, estradiol, progesterone, total GMV, and the 17 network-level average GMV values. We then ran a multivariate regression analysis predicting ROI-level GMV changes by gestation week. To identify which regions were changing at a rate different from the global decrease, we then re-ran the analyses to include total GMV as a variable of non-interest in the regression model. A similar statistical approach was taken for T1w-derived subcortical volume estimates. We ran a multivariate regression analysis predicting GMV changes over gestation in 28 regions-of-interest by gestation week (FDR-corrected at q < 0.05).</p> <p>T2-weighted MTL scans: To evaluate the relationship between gestation week and medial temporal lobe (MTL) subregion volume over pregnancy (n = 7 bilateral subregions; n = 18 MTL scans), we used a combination of linear and non-linear models based on individual subregion data patterns. Models were compared for best fit with each subregion via AIC from the GLM output (as described</p>
-------------------------	--

above). A linear regression model was most appropriate for PHC ($AIC_{diff} < 3$), whereas a quadratic model performed best for CA1 and CA2/3. As a control, we repeated the analyses with MTL subregion volumes after proportional volume correction of total gray matter volume calculated by ASHS. Finally, we evaluated the relationship between endogenous sex hormones (estrogen and progesterone) and subregion volumes using linear regression. Relationships were considered significant only if they met FDR correction at $q < .05$.

Diffusion imaging:

DSI Studio's correlational tractography (Yeh et al., 2016) was used to analyze the relationship between white matter structure and gestational week ($n = 16$). A truncated model was run to examine the relationship between white matter and sex steroid hormones ($n = 14$) for the subset of diffusion scans with paired endocrine data during gestation. A non-parametric Spearman correlation was used to derive the correlation between gestational week and endocrine factors and our metrics of interest (QA and MD; see Table S9 and Fig. S10 for MD results) because the data were not normally distributed. Statistical inference was reached using connectometry, a permutation-based approach that tests the strength of coherent associations found between the local connectome and our variables of interest. It provides higher reliability and replicability by correcting for multiple comparisons. This technique provides a high-resolution characterization of local axonal orientation. The correlational tractography was run with the following parameters: T-score threshold of 2.5, 4 pruning iterations, and a length threshold of 25 voxel distance. To estimate the false discovery rate (FDR), a total of 4000 randomized permutations were applied to obtain the null distribution of the track length. Reported regions were selected based on FDR cutoff ($FDR < 0.2$, suggested by DSI Studio), and contained at least 10 tracts. For visualization of global and tract QA at each gestational stage, mean QA values were extracted using DSI Studio's whole brain fiber tracking algorithm and ROI-based tracking using the default HCP842 atlas (Yeh et al., 2013).

Effect(s) tested

Predicting global, network, and regional volumetric change (GMV, CT, MTL subregion, microstructure) by pregnancy-related indicators (gestation week, estrogen, progesterone).

Specify type of analysis: Whole brain ROI-based Both

Anatomical location(s)

Global measures of gray matter volume, cortical thickness, and cerebrospinal fluid were computed by ANTs and validated with FreeSurfer. A whole-brain probabilistic atlas (e.g., Schaefer 400-region parcellation) was used for ROI analysis of cortical thickness and volume and the Yeo/Schaefer 17-network scheme was used for network-level analyses. The 'aseg' segmentation was used for ROI analysis of subcortical gray matter volume. The Princeton Young Adult 3T ASHS Atlas Template was used to examine volume among 7 MTL subfields: CA1, CA 2/3, dentate gyrus, subiculum, entorhinal cortex, perirhinal cortex, and the parahippocampal gyrus. Whole-brain white matter structure was assessed for the diffusion imaging analysis, wherein every tract and bundle was evaluated.

Statistic type for inference

N/A; s and diffusion MRI only.

(See [Eklund et al. 2016](#))

Correction

FDR-correction

Models & analysis

- | | |
|-------------------------------------|--|
| n/a | Involvement in the study |
| <input checked="" type="checkbox"/> | <input type="checkbox"/> Functional and/or effective connectivity |
| <input checked="" type="checkbox"/> | <input type="checkbox"/> Graph analysis |
| <input type="checkbox"/> | <input checked="" type="checkbox"/> Multivariate modeling or predictive analysis |

Multivariate modeling and predictive analysis

Multivariate regression analyses were used to explore brain structure in relation to gestation. Regional, network, and summary brain measures (dependent variables) were examined in relation to gestation week (independent variable). In follow-up statistical analyses (noted in Methods), various quality control metrics and global brain volume were included into the model to account for variables of non-interest (e.g., motion) and to identify highly impacted brain areas (e.g., controlling for total GMV).