

UCLA

UCLA Previously Published Works

Title

Longitudinal clonal tracking in humanized mice reveals sustained polyclonal repopulation of gene-modified human-HSPC despite vector integration bias

Permalink

<https://escholarship.org/uc/item/73w9v220>

Journal

Stem Cell Research & Therapy, 12(1)

ISSN

1757-6512

Authors

Suryawanshi, Gajendra W

Arokium, Hubert

Kim, Sanggu

et al.

Publication Date

2021-12-01

DOI

10.1186/s13287-021-02601-5

Copyright Information

This work is made available under the terms of a Creative Commons Attribution License, available at <https://creativecommons.org/licenses/by/4.0/>


Peer reviewed

RESEARCH

Open Access



Longitudinal clonal tracking in humanized mice reveals sustained polyclonal repopulation of gene-modified human-HSPC despite vector integration bias

Gajendra W. Suryawanshi^{1,2}, Hubert Arokium^{1,2}, Sanggu Kim^{6,7,8}, Wannisa Khamaikawin^{4,5}, Samantha Lin⁴, Saki Shimizu⁴, Koollawat Chupradit⁴, YooJin Lee^{1,2}, Yiming Xie^{1,2}, Xin Guan^{1,2}, Vasantika Suryawanshi⁹, Angela P. Presson^{10,11}, Dong-Sung An^{2,4} and Irvin S. Y. Chen^{1,2,3*} 

Abstract

Background: Current understanding of hematopoiesis is largely derived from mouse models that are physiologically distant from humans. Humanized mice provide the most physiologically relevant small animal model to study human diseases, most notably preclinical gene therapy studies. However, the clonal repopulation dynamics of human hematopoietic stem and progenitor cells (HSPC) in these animal models is only partially understood. Using a new clonal tracking methodology designed for small sample volumes, we aim to reveal the underlying clonal dynamics of human cell repopulation in a mouse environment.

Methods: Humanized bone marrow-liver-thymus (hu-BLT) mice were generated by transplanting lentiviral vector-transduced human fetal liver HSPC (FL-HSPC) in NOD.Cg-Prkdc^{scid}Il2rg^{tm1Wjl}/SzJ (NSG) mice implanted with a piece of human fetal thymus. We developed a methodology to track vector integration sites (VIS) in a mere 25 µl of mouse blood for longitudinal and quantitative clonal analysis of human HSPC repopulation in mouse environment. We explored transcriptional and epigenetic features of human HSPC for possible VIS bias.

Results: A total of 897 HSPC clones were longitudinally tracked in hu-BLT mice—providing a first-ever demonstration of clonal dynamics and coordinated expansion of therapeutic and control vector-modified human cell populations simultaneously repopulating in the same humanized mice. The polyclonal repopulation stabilized at 19 weeks post-transplant and the contribution of the largest clone doubled within 4 weeks. Moreover, 550 (~60%) clones persisted over 6 weeks and were highly shared between different organs. The normal clonal profiles confirmed the safety of our gene therapy vectors. Multi-omics analysis of human FL-HSPC revealed that 54% of vector integrations in repopulating clones occurred within ± 1 kb of H3K36me3-enriched regions.

Conclusions: Human repopulation in mice is polyclonal and stabilizes more rapidly than that previously observed in humans. VIS preference for H3K36me3 has no apparent negative effects on HSPC repopulation. Our study provides a methodology to longitudinally track clonal repopulation in small animal models extensively used for stem cell and

*Correspondence: syuchen@mednet.ucla.edu

¹ Department of Microbiology, Immunology and Molecular Genetics, University of California, 615 Charles E. Young Dr. South, BSRB, Rm 173, Los Angeles, CA 90095, USA

Full list of author information is available at the end of the article



© The Author(s) 2021. **Open Access** This article is licensed under a Creative Commons Attribution 4.0 International License, which permits use, sharing, adaptation, distribution and reproduction in any medium or format, as long as you give appropriate credit to the original author(s) and the source, provide a link to the Creative Commons licence, and indicate if changes were made. The images or other third party material in this article are included in the article's Creative Commons licence, unless indicated otherwise in a credit line to the material. If material is not included in the article's Creative Commons licence and your intended use is not permitted by statutory regulation or exceeds the permitted use, you will need to obtain permission directly from the copyright holder. To view a copy of this licence, visit <http://creativecommons.org/licenses/by/4.0/>. The Creative Commons Public Domain Dedication waiver (<http://creativecommons.org/publicdomain/zero/1.0/>) applies to the data made available in this article, unless otherwise stated in a credit line to the data.

gene therapy research and with lentiviral vectors designed for clinical applications. Results of this study provide a framework for understanding the clonal behavior of human HPSC repopulating in a mouse environment, critical for translating results from humanized mice models to the human settings.

Keywords: HSPC, Gene therapy, Humanized mouse, LoVIS-Seq, VIS tracking, MDA, Clonal dynamics

Background

Hematopoietic stem cells (HSC) are an ideal vehicle for introducing gene-modified cells to treat genetic disorders, cancers, and viral infections. Humanized mouse models—immunodeficient mice transplanted with human stem cells or tissues that generate a functioning human immune system—provide the most practical in vivo system for human stem cell and disease research (reviewed in [1, 2]). In particular, humanized bone marrow-liver-thymus mouse (hu-BLT mouse) models can support the development of human T cells, B cells, monocytes, macrophages, and dendritic cells. Comprehensive analysis of human T-cell development, diversity, and function in hu-BLT mice found intact TCR β sequence diversity, thymic development, and differentiation to memory and effector cells [3]. The hu-BLT mice demonstrate human MHC-restricted T cell response to Epstein-Barr virus (EBV) infection and human dendritic cells-mediated T cell response against toxic shock syndrome toxin 1 (TSST1) [4]. The hu-BLT mouse models have been used in the field of cancer research to explore treatment strategy for non-Hodgkin's lymphoma [5]. As models for sepsis studies, hu-BLT mice had high levels of human IL-6 in sera after cecal ligation and puncture (CLP)-surgery and are more susceptible to CLP-induced sepsis than C57BL/6 mice [6]. A triple knockout (C57BL/6 Rag2^{-/-} γ c^{-/-}CD47^{-/-}) -bone marrow, liver, thymus (TKO-BLT) humanized mouse model was able to recapitulate the early in vivo human immune response against Ebola virus (EBOV) and Marburg virus (MARV) [7]. The Human Cytomegalovirus (HCMV) latently infected hu-BLT mice developed human effector and central memory CD4⁺ and CD8⁺ T-cell responses and HCMV specific IgM and IgG B-cell responses [8]. Thus, hu-BLT mice provide a valuable animal model system to study virus-induced cellular and humoral immune response and to evaluate anti-viral treatments. To mimic anti-HIV gene therapy in HIV patients, a recent study used an HIV-1 pre-infected hu-BLT mouse model and demonstrated that HIV-1 infection induces selective expansion of anti-HIV-1 dual shRNA gene-modified (protected) CD4⁺ T cells over control vector-modified unprotected CD4⁺ T cells [9]. Another recent study utilized HIV-infected hu-BLT mouse models to iteratively test CD28 and 4-1BB costimulation for optimizing anti-HIV CAR T cell therapy [10]. These studies reaffirm that hu-BLT mouse

model provides an invaluable in vivo system for cancer, virus, and stem cell research and is particularly indispensable for preclinical gene therapy studies. However, translating results from xenograft mouse models to human setting is challenging as it remains unclear whether the human HSPC in mouse environment exhibit their human traits or clonally behave like mouse HSPC.

Understanding the clonal behavior of human cells in mouse environment is essential for interpreting results of humanized mice studies and effect of gene modification on the HSPC repopulation. In humans and macaques, longitudinal clonal tracking of transplanted HSPC revealed a biphasic expansion: an early phase of rapid and transient expansion of short-term HSC and a late phase (~1 year post-transplant) of sustained expansion of long-term HSC [11, 12]. In mice transplanted with limited number of vector-transduced mouse HSC, clonal tracking showed that clones start to stabilize around week 12 post-transplant and progressively fewer clones contribute to the overall repopulation [13]. Clonal tracking in mouse bone marrow also indicated similar time scale for clonal stabilization [14]. Another clonal tracking study in mice suggested transplantation dose-dependent change in HSC differentiation [15]. Clonal tracking in these mouse studies is done using genetic barcodes introduced in HSC using lentiviral vectors. Mice were transplanted with a limited number of mouse HSC that were transduced with lentiviral vector library consisting of individual vectors having a unique sequence tag or barcode. Integration of a barcoded vector in the DNA of host HSC introduces a unique genetic tag that can be used to identify and track individual HSC clones. This genetic barcoding assays enable quantitative clonal analysis and have been useful to study hematopoiesis and post-transplant clonal repopulation. However, generating a well-curated barcode library for quantitative clonal tracking is both expensive and time consuming. Moreover, low DNA availability, lack of a universal barcode counting method, small barcode library size and other limitations [16] affect the accuracy and usability of vector barcoding techniques. Inability to identify genomic location of inserted barcode limits the use of genetic barcoding techniques to detect insertional mutagenesis-induced clonal expansion.

Vector integration site (VIS) assays take advantage of a unique vector-host DNA junction sequence in each transduced HSPC due to the vector randomly integrating

into host genome of these cells. A high-throughput integration sites (IS) sequencing assay can simultaneously identify multiple VIS and can quantitate relative contribution of each VIS clone to detect probable vector insertion-induced clonal expansion. Our quantitative high-throughput VIS tracking study revealed that of all HSPC transplanted in rhesus macaques, ~0.01% are long-term HSC and start contributing >1.5 years post-transplant [12]. Recently, our VIS assay found polyclonal repopulation of anti-HIV CAR-modified HSPC in peripheral blood of pigtail macaques [17] indicating normal clonal expansion of stem cell-derived CAR cells. Our long terminal repeat indexing-mediated integration site sequencing (LTRi-seq) method now enables multiplexed and unbiased quantitative clonal analysis of cells gene-modified with anti-HIV or control vector and that of HIV-1 IS—all in the same hu-BLT mouse [18]. Clonal analysis of different tissues/organs showed HIV-1 infection-induced selective clonal expansion in the anti-HIV (H1 LTR-index) gene-modified population without adverse impact on clonal expansion of the control (H5 LTR-index) vector-modified population [18]. While these results show the potential of an anti-HIV gene therapy, the underlying dynamics of clonal selection remain unknown owing to lack of a reliable quantitative clonal tracking technique for small animal models.

Although self-inactivating lentiviral vectors are low risk, a strong promoter within the vector can upregulate the expression of endogenous genes where the vector integrated [19, 20]. In rhesus macaques, use of lentiviral vector containing a strong murine stem cell virus (MSCV) constitutive promoter-enhancer in the LTR induced aberrant clonal expansion [21]. Thus, promoter and transgene in vector can adversely impact the clonal behavior of transduced cells despite no obvious genotoxicity. Additionally, vector integrations near certain genes may impact behavior of stem cells, an *in vitro* study found lentiviral vector integration preference for active genes [22] and specifically associated with H3K36me3 [23] in activated human CD34+HSC. In absence of appropriate *in vivo* longitudinal clonal tracking and vector integration data, the association between VIS preference for genes and histone modifications and its impact on *in vivo* proliferation, differentiation, and repopulation of gene-modified human HSPC remains partially explored.

Developing a reliable quantitative VIS assay for longitudinal clonal tracking in small animal models is challenging due to low sample volume. Only 100 μ l blood/biweekly can be safely drawn from a typical humanized mouse (~0.6 μ g of DNA assuming 1000 cell/ μ l), whereas VIS assays require more than 1 μ g DNA. Multiple displacement amplification (MDA), a whole genome amplification technique, can increase the DNA amount from

few nanograms to micrograms with a very low error rate (1 in 10^6 to 10^7 nucleotides) [24] and high coverage [25]. MDA-amplified DNA has been used for various sequence sensitive applications such as single nucleotide polymorphism (SNP), next generation sequencing studies [26], detection of retroviral IS, and sequencing full-length HIV-1 proviruses including the IS [27, 28]. We hypothesize that MDA-amplified DNA from low-volume samples can be used with VIS assay for quantitative longitudinal clonal tracking in hu-BLT mouse. A VIS assay for low-volume sample will provide an essential tool to study the clonal dynamics of HSPC repopulating in a mouse environment, to assess the safety of gene therapy vectors, and to explore the association between *in vivo* clonal behavior of gene-modified HSPC and location of vector integration in host genome.

In this study, we developed a quantitative low-volume vector integration site sequencing (LoVIS-Seq) assay, a combined MDA and VIS assay for low-volume samples, for longitudinal clonal tracking in small animal models. We longitudinally tracked hundreds of clones in two different gene-modified cell populations simultaneously repopulating in hu-BLT mice. Human cell repopulation in a mouse environment is polyclonal and resembles typical after-transplant HSPC expansion in other small and large animal models. Analysis of multi-omics data of FL-HSPC and VIS in repopulating clones shows vector integration bias for actively transcribed regions of the genome. Our assay provides an efficient tool to study clonal repopulation in murine and humanized-mouse models used for stem cell and gene therapy research. Results of clonal and genomic analysis revealed valuable insight into the clonal dynamics of human HSPC repopulation in a mouse environment.

Methods

Human fetal thymus and isolation of FL-CD34+ cells from fetal tissue

Human fetal thymus and livers were obtained from Advanced Bioscience Resources (ABR) and the UCLA CFAR Gene and Cellular Therapy Core. Human fetal liver CD34+HSPC and thymus pieces were processed as previously described [29]. Briefly, a single cell suspension of fetal liver cells was strained through 70 μ m mesh and layered onto density gradient separation media (Ficol Paque PLUS, GE Healthcare). After 20 min of centrifugation, the mononuclear cells layer was collected. Anti-CD34+ microbeads (Miltenyi Biotec, San Diego, CA) were used for magnetic isolation of CD34+ cells from mononuclear cells. Calvanese et al. [30] also obtained fetal liver from the UCLA CFAR Gene and Cellular Therapy Core and followed identical CD34+ magnetic sorting

to isolate uncultured FL-HSPC for RNA-seq, ATAC-seq, and ChIP-seq assay.

Vector transduction of FL-CD34+ cells

The isolated FL-CD34+ cells were transduced overnight using either mCherry or EGFP vector at MOI (multiplicity of infection) of 1 and 3, respectively. We used higher MOI for EGFP vector to achieve gene marking level comparable to mCherry vector. Fraction of vector-transduced cells were cultured for 4 days and percentage of EGFP or mCherry expressing cells were measured by flow cytometry (Additional file 2: Fig. 2A). Our data showed of the FL-CD34 cells transduced with mCherry vector, 68.4% cells were mCherry+ and of the FL-CD34 cells transduced with EGFP vector 88.5% cells were EGFP+.

Humanized BLT mouse and sample collection

NOD.Cg-Prkdc^{scid}Il2rg^{tm1Wjl}/SzJ (NSG) mice, 6–8 week old, were myeloablated 1 day before transplant by intraperitoneal (i.p.) injection with 10 mg/kg of 6-thioguanine (6TG) (Sigma-Aldrich, Saint Louis, MO) or 35 mg/kg of Busulfan for mouse m860. Myelo-preconditioned mice were transplanted with human fetal liver CD34+ HSPCs transduced with Anti-HIV vector (EGFP+) (0.5×10^6 cells/mouse) and mixed with HSPCs transduced with the control (mCherry+) vector (0.5×10^6 cells/mouse). The mice were transplanted with a two-step procedure: half the mixture of EGFP+ and mCherry+ transduced FL-CD34+ cells was solidified by matrigel (BD Bioscience, San Jose, CA), mixed with CD34- cells as feeder cells (4.5×10^6 cells), and implanted with a piece of human thymus under the mouse kidney capsule. Then, mice were injected with the other half of the mixed EGFP+ and mCherry+ transduced cells via retro-orbital vein plexus using a 27-gauge needle on the same day. All hu-BLT mice were constructed using donor-matched fetal liver cells and thymus tissues. Two different donors were used to set up hu-BLT mouse m860 and mice m591, m598, and m599.

Bone marrow cells for MDA were harvested from mouse m860 at week 25 post-transplant. Low human reconstitutions at early timepoints and graft versus host-disease-related illnesses at very late timepoints post-transplant have potential to impact interpretation of the clonal data. In order to avoid these potential confounding effects, we longitudinally tracked clones between week 13 to 19 post-transplant. Every two weeks from weeks 13–19 post-transplant, 100 μ l of mouse blood was collected from the retro-orbital vein for longitudinal clonal tracking and for monitoring reconstitution of human leukocyte and level of the EGFP+ and mCherry+ marked cells. Plasma was removed and peripheral blood cells were stained with monoclonal antibodies for 30 min

(Additional file 2: Fig. 9). Red blood cells were lysed with red blood cell lysis buffer (4.15 g of NH₄Cl, 0.5 g of KHCO₃, and 0.019 g of ethylenediaminetetraacetic acid in 500 mL of H₂O) for 10 min and washed with FACS buffer (2% fetal calf serum in phosphate-buffered saline [PBS]). Stained cells were resuspended in 16 μ l PBS, of which 8 μ l was split equally into two tubes for MDA replicates. The remaining 8 μ l was mixed with 300 μ l of 1% formaldehyde in PBS and examined with Fortessa (BD Biosciences) flow cytometers. Flow cytometry data were utilized to monitor human reconstitution (Additional file 2: table 2) and count human cells, mCherry+ cells, and EGFP+ cells, as well as human T and B cells in blood (Additional file 2: Fig. 2B). The following monoclonal antibodies with fluorochromes were used: human CD45-eFluor 450 (HI30, eBioscience), CD3-APC-H7 (SK7: BD Pharmingen), and CD19-BV605 (HIB19: BioLegend). Data were analyzed on FlowJo (TreeStar, Ashland, OR) software.

LoVIS-Seq workflow with whole genome amplification and quantitative VIS assay

Multiple displacement amplification for whole genome amplification: To estimate the minimum number of cells required for LoVIS-Seq, we collected 81,000, 27,000, 18,000, 9,000, 3,000, and 1,000 bone marrow cells from mouse m860 by serial dilution and stored in 4 μ l of PBS at -20°C. MDA was done directly on cells (Additional file 2: Fig. 9) using the REPLI-g Single Cell Kit from Qiagen (Cat #150,343) following kit-specific protocol. For longitudinal clonal tracking in the blood compartment, 100 μ l blood was drawn at weeks 13, 15 & 17. At end point (week 19), max blood (\approx 1 ml) was collected, out of which 100 μ l was used for flow cytometric analysis along with MDA; the remainder was used to isolate unamplified whole blood DNA. Cells for MDA were isolated as described above and stored in 4 μ l of PBS at -20°C. MDA-amplified DNA was then used for quantitative VIS assay. A Qiagen DNeasy Blood & Tissue Kit was used to extract unamplified DNA from max blood cells, splenocytes, and bone marrow cells.

Quantitative VIS assay and data analysis workflow: For VIS sequencing, we followed the procedures described in our previous publication [12, 18, 31, 32] and focused on analyzing only the right LTR junctions using CviQI and RsaI restriction enzymes. For our VIS assay, we used one microgram MDA-amplified or unamplified genomic DNA for animal m860 samples and two micrograms MDA-amplified or unamplified genomic DNA for different timepoint samples, with a few exceptions (see Additional file 2: Tables 1 and 2). DNA samples were subject to extension PCR using LTR specific biotinylated primers /5BiotinTEG/CTGGCTAACTAG

GGAACCCACT 3' and /5BiotinTEG/CAGATCTGAGCCTGGGAGCTC 3'. The extension PCR product was then digested using CviQI and RsaI restriction enzymes and biotin primer-bound DNAs isolated using streptavidin-agarose Dynabeads using magnetic separator as per manufacturer's instructions. The vector-host junctions captured on streptavidin beads were processed for linker-mediated PCR (LM-PCR) methods as described previously [31, 32]. The linker ligated vector-host junction DNA was subjected to two-step PCR. First step amplification was done using primer 5' CTGGCTAAC TAGGGAACCCACT 3' and first linker primer GTG TCACACCTGGAGATAT. We removed the internal vector sequence by restriction enzyme (SfoI) digestion. The digested product of first PCR was then amplified using primer 5'ACTCTGGTAACTAGAGATCC 3' and second linker primer 5' GGAGATATGATGCGGGATC 3'. Since the LTR index sequence is included in the vector-host junction, we obtain unbiased amplification of all the H1, H5 and/or WT VIS sequences. Lentiviral vectors used in this study are derived from FG12-mCherry lentiviral vector [29] and all the primers are designed accordingly. A detailed protocol for VIS assay is provided in Additional file 1. The amplicon libraries were prepared using custom made Illumina (Illumina, San Diego, CA) sequencing primers for Illumina MiSeq (m860 samples) or iSeq100 (m599, m599, and m591 samples) sequencer. Sequences with a virus-host junction with the 3' end LTR, including both the 3'-end U5 LTR DNA and ≥ 25 base host DNA (with $\geq 95\%$ homology to the human genome), were considered true VIS read-outs. The sequence mapping and counting method was performed as described previously [18]. In brief, sequences that matched the 3' end LTR sequence attached to genomic DNA, as well as LTR-indexes (H1-TGGAAAATCTCCAACA, H5-TGGAAAATATCCAACA or WT- TGGAAAATCTCTAGCA), were identified using a modified version of SSW library in C++ [33]. Reads were classified as H1, H5, or WT VIS based on the LTR barcodes used in the experiment. VIS sequences were mapped onto the human genome (Version hg38 downloaded from <https://genome.ucsc.edu/>) using Burrows-Wheeler Aligner (BWA) software. Mapped genomic regions were then used as reference and VIS reads were remapped using BLAST to further remove poorly mapped reads to get an accurate estimate of sequence count. Final VIS counting was done after correcting for VIS collision events and signal crossover as described previously. VIS with a final sequence count less than the total number of samples analyzed per animal were removed. VIS clones with maximum frequency values below first quartile were classified as "low frequency," clones with maximum frequency value above third quartile were classified as "high frequency," and clones with

maximum frequency between the first and third quartiles were designated "medium frequency." VIS clones that were detected with frequency > 0 at every week from 13–19 are termed "persistent clones." The 10 high-frequency VIS clones at each timepoint were selected as top 10 VIS. All the VIS data and list of VIS-proximal genes are provided in Additional file 1.

Random integration sites

Random integration sites were generated in silico using a custom python script. To mimic our VIS assay, we randomly selected 1000 integration sites that were within ± 1500 bp of the nearest CviQI/RsaI (GTAC) site in the human genome (hg38).

Clonal diversity analysis

For diversity analysis, we used Rényi's diversity/entropy [34] of order α defined as follows

$$H_{\alpha} = \frac{1}{1 - \alpha} \log \left(\sum p_i^{\alpha} \right),$$

where p_i is the proportional abundance of the i th VIS clone for $i = 1, \dots, n$. At each timepoint, an average Rényi's diversity profile was obtained by calculating average values of H_{α} for $\alpha \geq 0$. The α is considered as a weighting parameter such that increasing α leads to increased influence of high-frequency VIS clones. The proportional abundance is calculated as $p_i = s_i/S$, where s_i is the sequence count of the i th VIS clone and S is the sum of sequence counts from all VIS clones. The Rényi's diversity H_{α} values are averaged over two replicates and plotted as a function of α . If all VIS clones contributed equally, i.e., $p_i = \frac{1}{n}$ for all $i = 1, \dots, n$, then H_{α} for all values of α would be equal and the profile (line) would be horizontal. VIS clones expanding at different rates would show decreasing H_{α} values as α increases, generating a downward-sloped diversity profile that is steeper with more non-uniform clonal expansion. H_{α} indicates clonal diversity of the repopulating cells, such that consistently higher values of H_{α} indicate a more diverse clonal population. If the profiles for two populations/samples cross, then their relative diversities are similar. For $\alpha = 0$, $H_0 = \log(n)$ and the antilogarithm of this value equates to the richness or number of unique IS. H_{α} at $\alpha = 1$ and $\alpha = 2$ are the Shannon and 1/Simpson indexes, respectively. We calculated Rényi's diversity using the R package BiodiversityR (<https://cran.r-project.org/web/packages/BiodiversityR/index.html>). For the above analysis, we used raw sequence counts from two replicates without distinguishing between mCherry-H5 VIS and EGFP-WT VIS.

RNA-seq data analysis

Raw sequence data of uncultured FL-HSPC (in triplicate) were pre-processed for quality using Fastqc. Trimmomatic was used to remove adaptors and for quality trimming. After this, reads were aligned onto human genome hg38 using RNA STAR aligner [35]. SAMtools was used to remove reads with low mapping scores (<20) and to generate BAM files. Cufflinks [36] was used to calculate FPKM values for all genes. The human cancer consensus gene list is from Catalogue of Somatic Mutations In Cancer (<https://cancer.sanger.ac.uk/census>).

ATAC-seq analysis

Raw sequence data of uncultured FL-HSPC (in triplicate) were pre-processed for quality using Fastqc. Adaptor removal and quality trimming was done using Trimmomatic. After this, reads were mapped onto human genome hg38 using bowtie2 with parameter—very-sensitive -X 2000 -k 1. SAMtools was used to remove reads with low mapping (<20) scores, blacklisted regions, and to generate BAM files. Picard tool kit was used to remove duplicate reads. We used Genrich, a paired end peak caller, to identify ATAC peaks. Software deepTools [37] was used to generate coverage (.bw) files and for visualization of open DNA in genes and VIS-proximal regions.

ChIP-seq data analysis

Raw sequence data of uncultured FL-HSPC for histones, RNAPolIII, and input were pre-processed for quality using Fastqc. Trimmomatic was used to remove adaptors and for quality trimming. After this, reads were mapped onto human genome hg38 using bowtie2 with parameter—local. SAMtools was used to remove reads with low mapping (<20) scores, blacklisted regions, and to convert SAM to BAM format. Picard tool kit was used to remove duplicates. MACS2 tool was used to call peaks for all histone marks and RNAPolIII using input sample as control. Software deepTools [37] was used to generate coverage.bw files and for visualization of histone/RNAPolIII in genes and VIS proximal regions. Proximity

of VIS to a peak was calculated by measuring the distance between VIS and the coordinates of the nearest peak; for VIS within the peak distance is 0 bp.

Statistical analysis

Relative clonal frequencies are summarized as means \pm standard deviations (SDs). Pearson correlation (r) is used to assess similarity in terms of a linear relationship among pairs of samples. The interclass correlation coefficient, ICC(3,1) two-way mixed effects, absolute agreement is used to compare the reproducibility (ICC) of clonal profiles among replicates [38]. ICC, Pearson's r and p values are calculated using statistical software R (version 3.6, <https://www.r-project.org/>). To determine if VIS preference for genomic and epigenetic features differs significantly from random IS, we used Pearson's chi-squared test with Yate's continuity correction (function `chisq.test()` in software R). We used principal component analysis (PCA) to reduce the complexity of read coverage data of multiple chromatin feature in proximity to VIS. The dimensionality reduction by PCA method is similar to clustering and allows detection of patterns in the data. In this study, PCA was done using software deepTools [37].

Results

Minimum 10,000 bone marrow cells or 25 μ l of blood is sufficient for LoVIS-Seq

To estimate the minimum number of cells sufficient for LoVIS-seq assay to provide a quantitative clonal analysis, we collected bone marrow (BM) cells from hu-BLT (bone marrow-liver-thymus) mouse (m860). Fetal liver CD34+ cells transduced with sh1005(anti-CCR5 shRNA)-EGFP vector or control mCherry vector were mixed in equal ratio and transplanted in the mouse (Fig. 1a-b, details in Methods). We first estimated clonal composition of the EGFP-WT (WT LTR-index) and mCherry-H1 (H1 LTR-index) populations using unamplified bulk DNA, in triplicate, as described previously [18]. A total of 300 ± 42 SD (216 ± 22 SD mCherry-H1 VIS and 84 ± 20 SD EGFP-WT) VIS were detected

(See figure on next page.)

Fig. 1 LoVIS-Seq reproduces clonal distribution of entire mouse blood using 25 μ l blood. **a** Diagram showing Anti-HIV-EGFP-WT and control mCherry-H1/H5 vectors having WT, H1, or H5 LTR-index and strategy for VIS assay with LTRi-seq. LTR index sequences are shown in magenta box. **b** Hu-BLT mouse model: Fetal liver CD34+ cells were separately transduced with either anti-HIV or control vectors and transduced cells were mixed 1:1 for transplant. The mix of transduced cells was transplanted in myeloablated NSG mice with a fetal thymus tissue implant. **c** Stacked bar plot showing clonal frequencies of VIS in BM of hu-BLT mouse. Clones from mCherry-H1 and EGFP-WT cells were identified by corresponding LTR barcodes. In the stacked bar plot, each band represents a unique VIS (HSPC clone) and thickness of the band shows clonal frequency or abundance of that HSPC clone. Percentage of mCherry+ or EGFP+ cells within human cell (hCD45+) population are shown on top of the corresponding stacked bar. **d** Plot showing Pearson's r for correlations of mCherry-H1 (red dots) and EGFP-WT (green dots) VIS clonal profiles between unamplified DNA replicates and replicates of MDA-amplified DNA samples for different cell numbers. **e** Experimental protocol for longitudinal clonal tracking in humanized BLT mice. **f** Scatter plot showing VIS clonal frequencies between unamplified whole blood DNA and two replicates of MDA-amplified DNA from 25 μ l blood at week 19 (r = Pearson's r , diagonal line is $r = 1$) for m599 and m598. Clonal frequency of mCherry-H5 (red dots) and EGFP-WT (green dots) VIS clones in unamplified DNA samples (y-axis) and MDA replicates (x-axis)

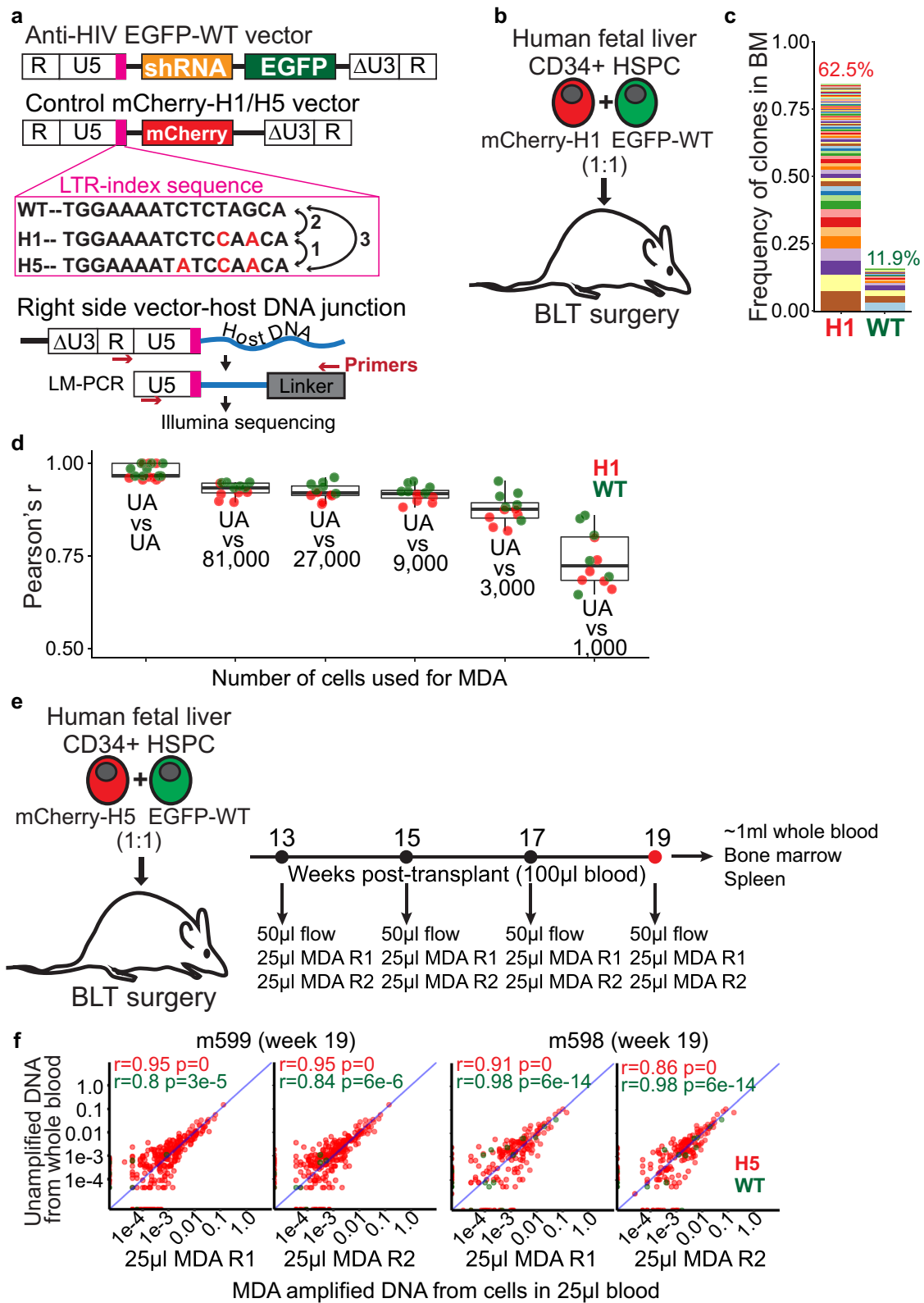


Fig. 1 (See legend on previous page.)

indicating polyclonal expansion. The clonal size distribution in the mouse bone marrow (Fig. 1c) resembled that of recently observed hu-BLT mice [18] and pigtail macaques [17] by us, as well as that of observed by others in mice [13], autologously transplanted nonhuman primates [12, 39], and humans [11, 40] overall, indicating normal clonal repopulations.

For low-volume sample with DNA yield of $<1 \mu\text{g}$, we propose to increase the quantity of DNA by whole genome amplification with MDA. Our LoVIS-seq protocol combines whole genome amplification and VIS assays. To prevent losses during extraction of genomic DNA from cells, we perform MDA directly on the cells and use the MDA-amplified DNA for VIS assay (Additional file 2: Fig. 9). We hypothesized that LoVIS-seq assay can be used for clonal analysis of low-volume samples without loss of quantitative accuracy. To test our hypothesis, we first performed MDA directly on 81,000, 27,000, 9,000, 3,000, and 1,000 bone marrow cells, each in duplicate (Additional file 2: Fig. 1A, details in Methods section). We used equal amounts of MDA-amplified DNA and unamplified bulk DNA for the VIS assay (Additional file 2: table 1). We assessed reproducibility of clonal profiles in MDA-amplified DNA of 81,000, 27,000, 9,000, 3,000, and 1,000 bone marrow cells against that of unamplified DNA sample from bulk BM cells. We performed routinely used Pearson correlation analysis and also did intraclass correlation coefficient (ICC) analysis to test the reproducibility of clonal abundances (details in Method section). We found high reproducibility of clonal profiles in different MDA samples and within-MDA replicates of 81,000 to 9,000 cells (avg. Pearson's r value >0.91) (Fig. 1d and Additional file 2: Fig. 1B-F). To determine the minimum number of BM cells that are required for obtaining high quantitative accuracy, we compared the reproducibility of MDA-amplified 81,000, 27,000, 9,000, 3,000, and 1,000 bone marrow cells and found that for less than 9,000 cells, the reproducibility dropped (avg. Pearson's $r = 0.87$ for 3,000 and 0.73 for 1,000 cells). Importantly, reduced cell numbers caused a modest reduction in VIS detection (Additional file 2: Fig. 1G) showing minimal impact on the sensitivity of our assays. In order to further validate the reproducibility of our assay, we used ICC analysis. ICC can be used to simultaneously compare replicates of unamplified DNA against replicates of MDA-amplified samples. The ICC values (Additional file 2: Fig. 1H) were similar to Pearson's r , further indicating loss of reproducibility when fewer cells were used as source material for MDA. Overall, both the Pearson and ICC analyses validate that MDA-amplified DNA from $>10,000$ bone marrow cells is sufficient for LoVIS-Seq.

After establishing the accuracy and reproducibility using BM cells, we tested LoVIS-seq assays with hu-BLT mouse blood. We collected $100 \mu\text{l}$ blood at week 13, 15, 17 and $\sim 1 \text{ ml}$ of whole blood at week 19 post-transplant from hu-BLT mice. These mice were transplanted with an equal mix of human CD34+ cells transduced with anti-HIV EGFP-WT vector and control mCherry-H5 vector (Fig. 1e). Cells from $50 \mu\text{l}$ blood were used for flow cytometry and the remaining cells were used for MDA duplicates; each $25 \mu\text{l}$ of blood (~ 400 and ~ 600 human cells/ μl blood for mouse m599 and m598, respectively). High correlation (median Pearson's $r = 0.93$) of mCherry-H5 and EGFP-WT VIS clonal frequencies between unamplified and MDA-amplified DNA from blood cells (Fig. 1f) indicates clonality of entire mouse blood can be captured with $25 \mu\text{l}$ of blood. Importantly, the MDA replicates also showed high reproducibility (median Pearson's $r > 0.95$, Additional file 2: Fig. 3A). To further validate the reproducibility, we simultaneously compared two MDA replicates and unamplified DNA from whole blood. The ICC values of >0.95 further confirmed reproducibility of our assay with mere $25 \mu\text{l}$ blood. In conclusion, our LoVIS-Seq assay accurately captured the clonality of two vector-modified cell populations in hu-BLT mouse blood using mere $25 \mu\text{l}$ of blood or as few as 10,000 cells. These results indicate that LoVIS-Seq assay can be used to study clonal repopulation of gene-modified cells in mouse blood using only a fraction of (approximately 2.5%) of whole blood.

Simultaneous clonal tracking of therapeutic vector-modified and control vector-modified populations

After demonstrating the high accuracy and reproducibility of LoVIS-Seq assay, we aim to examine clonal dynamics of anti-HIV EGFP-WT vector and control mCherry-H5 vector-modified two human cell populations simultaneously repopulating the mouse blood. We collected $25 \mu\text{l}$ of hu-BLT mouse blood samples for each MDA replicate on week 13, 15, 17 and 19 post-transplant. Despite the variation in cell count over time, each replicate/sample had $>10,000$ (avg. $21,189 \pm 7,364$) cells (Additional file 2: table 4 and Additional file 2: Fig. 2B). After performing LoVIS-Seq assay on these cell samples, we identified 329 VIS in m599, 222 VIS in m598, and 346 VIS in m591 (total 897 VIS clones) and longitudinally tracked change in the relative contribution of these clones to the repopulation from week 13 to 19 (Fig. 2a). From total 897 VIS clones, we classified mCherry-H5 (792) and EGFP-WT (105) VIS clones using LTR-indexes in the two vectors. Consistent with our previous study [18], we observed high correlations between the total mCherry-H5 VIS clonal frequency and mCherry⁺ cell percentage by flow cytometry (Pearson's $r = 0.8$), as well

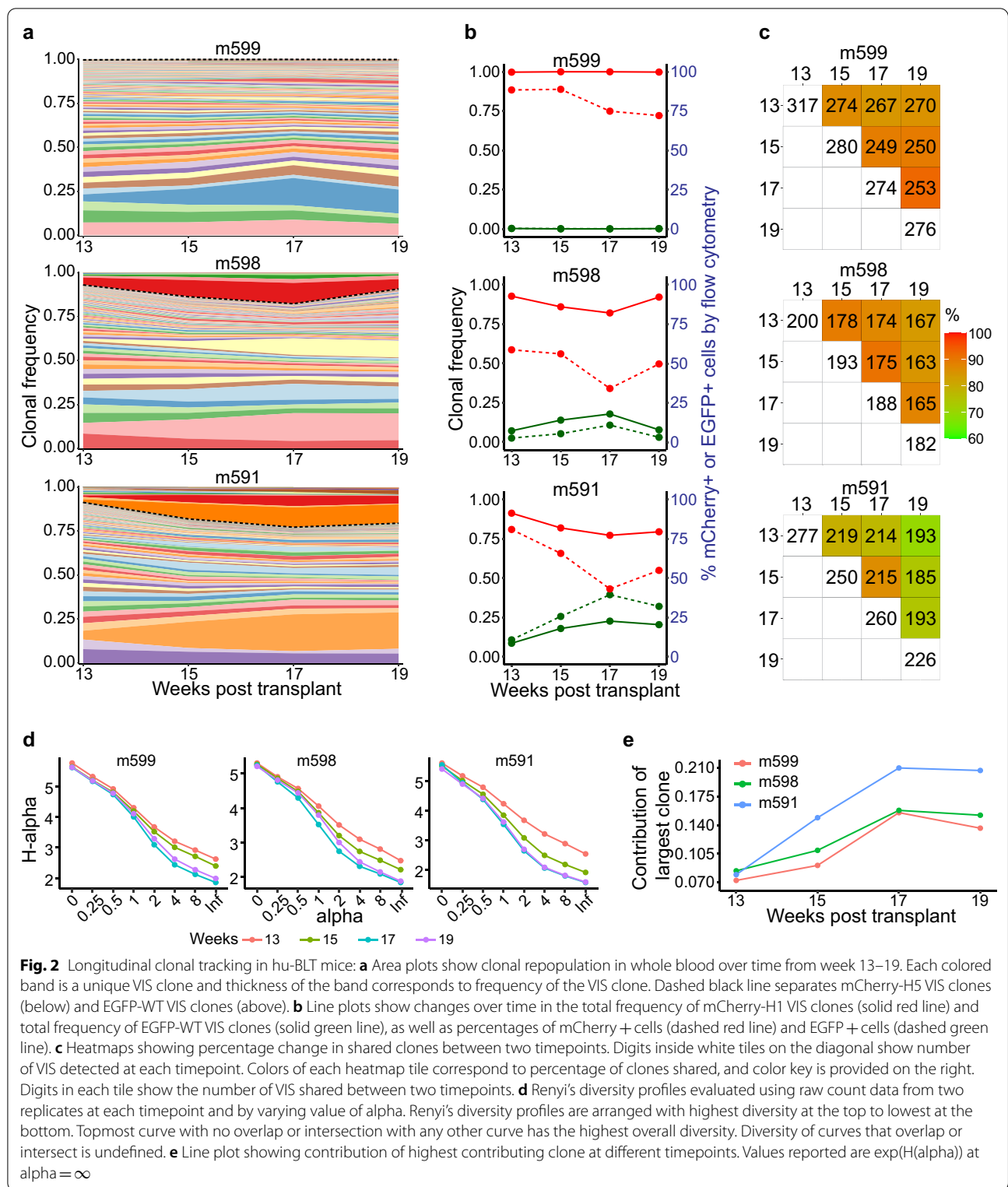


Fig. 2 Longitudinal clonal tracking in hu-BLT mice: **a** Area plots show clonal repopulation in whole blood over time from week 13–19. Each colored band is a unique VIS clone and thickness of the band corresponds to frequency of the VIS clone. Dashed black line separates mCherry-H5 VIS clones (below) and EGFP-WT VIS clones (above). **b** Line plots show changes over time in the total frequency of mCherry-H1 VIS clones (solid red line) and total frequency of EGFP-WT VIS clones (solid green line), as well as percentages of mCherry + cells (dashed red line) and EGFP + cells (dashed green line). **c** Heatmaps showing percentage change in shared clones between two timepoints. Digits inside white tiles on the diagonal show number of VIS detected at each timepoint. Colors of each heatmap tile correspond to percentage of clones shared, and color key is provided on the right. Digits in each tile show the number of VIS shared between two timepoints. **d** Renyi's diversity profiles evaluated using raw count data from two replicates at each timepoint and by varying value of alpha. Renyi's diversity profiles are arranged with highest diversity at the top to lowest at the bottom. Topmost curve with no overlap or intersection with any other curve has the highest overall diversity. Diversity of curves that overlap or intersect is undefined. **e** Line plot showing contribution of highest contributing clone at different timepoints. Values reported are $\exp(H(\alpha))$ at $\alpha = \infty$

as between total EGFP-WT VIS clonal frequency and EGFP+ cells percentage (Pearson's $r=0.9$, Additional file 2: Fig. 3B). The high correlation between flow cytometry and clonal frequency data indicates quantitative

accuracy of LoVIS-Seq assay and ability to simultaneously track clonal expansion of two human cell populations repopulating in the same animal using a mere 25 μ l of blood. In addition, longitudinal clonal tracking

further shows expansion in EGFP-WT clones coincided with reduction in mCherry-H5 contribution and vice versa (Fig. 2b; solid lines); these changes closely match the change in EGFP⁺ and mCherry⁺ cell percentages measured by flow cytometry (Fig. 2b; dashed lines). Furthermore, repopulation in both EGFP-WT and mCherry-H5 populations is largely driven by expansion of a few HSPC clones—a characteristic feature of after-transplant repopulation. The coordinated expansion of EGFP⁺ and mCherry⁺ cell populations reveals that some HSPC clones in one population expand to compensate for drop in contribution from HSPC of other population, possibly to maintain blood homeostasis. These results present a first-ever demonstration of coordinated expansion of HSPC clones from two populations, therapeutic vector-modified and control vector-modified, repopulating in the same hu-BLT mice.

Sustained polyclonal repopulation with rapid clonal expansion and stabilization

The clonal analysis revealed that at each timepoint, hundreds of VIS clones contributed to the repopulation and contributions of EGFP-WT and mCherry-H5 clones changed over time. To investigate the properties of the clonal dynamics of human cell repopulation in mouse environment, we analyzed the quantitative clonal tracking data from different timepoints. We found that the maximum number of VIS were detected at week 13 and on average, only 13% ($\pm 5\%$) fewer VIS were detected at week 19 compared to week 13. Also, the number of total VIS contributing to repopulation at each timepoint decreased with time (Fig. 2c). On average, 61% ($\pm 12.8\%$) of persistent VIS clones (m599: 235 clones, m598: 150 clones, and m591: 165 clones; total 550 clones) consistently contributed for 6 weeks and provided stable polyclonal repopulation (Fig. 2a area plots). While the number of VIS clones steadily dropped over time in both the mCherry-H5 and EGFP-WT populations, their clonal profiles became increasingly similar (Additional file 2: Fig. 4A-B), comparable to polyclonal repopulation patterns that have been reported in nonhuman primates [12]. Moreover, correlation between timepoints indicates that clonal distribution at week 13 differs from week 19, with clonal expansion stabilizing around week 17 (Additional file 2: Fig. 4B). We also examined Rényi's diversity profiles for each animal at each timepoint (details in Methods section). The clonal diversity at week 13 was highest and subsequently decreased with time (Fig. 2d). Diversities were similar between weeks 17 and 19 as indicated by their overlapping diversity profiles. The two commonly used diversity indexes Shannon Index [41] ($\alpha = 1$) and $\ln(1/\text{Simpson index})$ ($\alpha = 2$) referred here on as

Simpson index [42] to capture the overall change in the diversity using single numerical values. Shannon index is more sensitive to number of VIS clones and Simpson index to the relative frequency of each VIS clone. The Shannon [41] and Simpson [42] indices dropped between weeks 13 and 17, indicating expansion of fewer clones (Additional file 2: Fig. 4C). The similarity of the indices between weeks 17 and 19 suggests stabilization of clones. Contribution by the most frequent clone rose ~ 2.2 times, from 0.078 (± 0.005 , $n = 3$) at week 13 to 0.174 (± 0.030 , $n = 3$) at week 17 (Fig. 2e), signaling rapid expansion of a few clones. Compared to humans, wherein stable clones appear > 1 year post-transplant [11], in hu-BLT mice the clonal repopulation remained normal despite faster expansion and earlier stabilization of human HSPC clones. Overall, these results indicate notable difference in the time scale of clonal repopulation of human cells in mouse from that in human environment and these findings have larger implication while interpreting and translating results from hu-BLT mouse models to human settings.

Clonal sharing between organs reveals normal repopulation and unique tissue distribution pattern

We showed first-ever demonstration of clonal repopulation of two human cell populations in mouse environment with sustained polyclonal repopulation and coordinated expansion of two human cell populations in mouse blood. However, clonal studies in nonhuman primates revealed that clonal expansion patterns in blood during early phase of repopulation differ from other organs [43]. In hu-BLT mice, whether clonality of blood differs from the tissue/organ is unknown. We determined the clone profiles in bone marrow (BM) and spleen compartments of these mice using bulk cells for our VIS assay. Similar to blood, BM and spleen compartments also showed normal polyclonal repopulation. Between organ/tissue comparison of clonal size distributions showed a highly correlated clonal expansion pattern (avg. Pearson's $r = 0.96$) between blood and spleen (Fig. 3; Polar area plots); however, clonal expansion in bone marrow was less correlated to blood or spleen. Importantly, we observed that in all three tissue compartments, persistent clones contributed the most to repopulation. These results show substantial clonal sharing among different tissues yet, differential clonal contributions and distribution of cell lineages in human cell population (Fig. 3; Barplots). Our data also indicate that clonal tracking using BM samples would reflect the clonality only of the BM compartment. Compared to serial bone marrow extractions, clonal tracking using blood is more practical and closely reflect the clonal composition of spleen.

Influence of genomic location and proximal genes on clonal growth

We found normal and polyclonal expansion in human cell populations in mouse blood and tissue compartment yet mutagenic insertions causing abnormal growth remains a major concern for gene therapy vectors. For each VIS, our assay provided both relative frequency and genomic location of integration allowing us to identify possibility of insertional mutagenesis-induced clonal growth. Our VIS data from in vivo repopulating clones showed preference for high gene density chromosomes (Additional file 2: Fig. 5A) also observed with the HIV-1 integration pattern [44]. Additionally, similar genomic distribution of low, medium, and high frequency in vivo repopulating VIS clones (Fig. 4a) suggests that clonal expansion is unrelated to genomic location of integration. We found that in ~80% of the total detected clones, VIS occurred within ± 1 Kb of protein-coding genes, significantly higher than 54% of 1000 random IS ($p < 0.001$, Additional file 2: Fig. 6A). About 8% of VIS were within ± 1 Kb of long non-coding RNA (lncRNA) and 10% were outside ± 1 Kb of any genes (distal VIS, Fig. 4b inside pie chart). Persistent and top 10 VIS clones (top 10 high-frequency VIS clones collected from each timepoint) showed similar preference for gene biotypes (Fig. 4b inside pie chart). Out of all VIS, only 66 (including 1 out of 42 top 10 VIS) were proximal to known cancer consensus genes (Fig. 4a Circos plot). Gene ontology analysis of proximal genes and their mouse orthologs showed significant enrichment ($P < 0.01$) in various biological pathways such as cell–cell interaction, viral process and transcription regulation (Additional file 2: Fig. 5B). In vitro data of VIS-proximal gene in vector-transduced human CD34+HSC showed enrichment in similar biological processes [22]. A recent study claims that biological function of genes near HIV integration sites influences in vivo clonal expansion of HIV-infected cells [45]. However, we found no strong evidence of link between in vivo differentiation potential of VIS clones and genomic location of its VIS or biological function of the VIS-proximal genes.

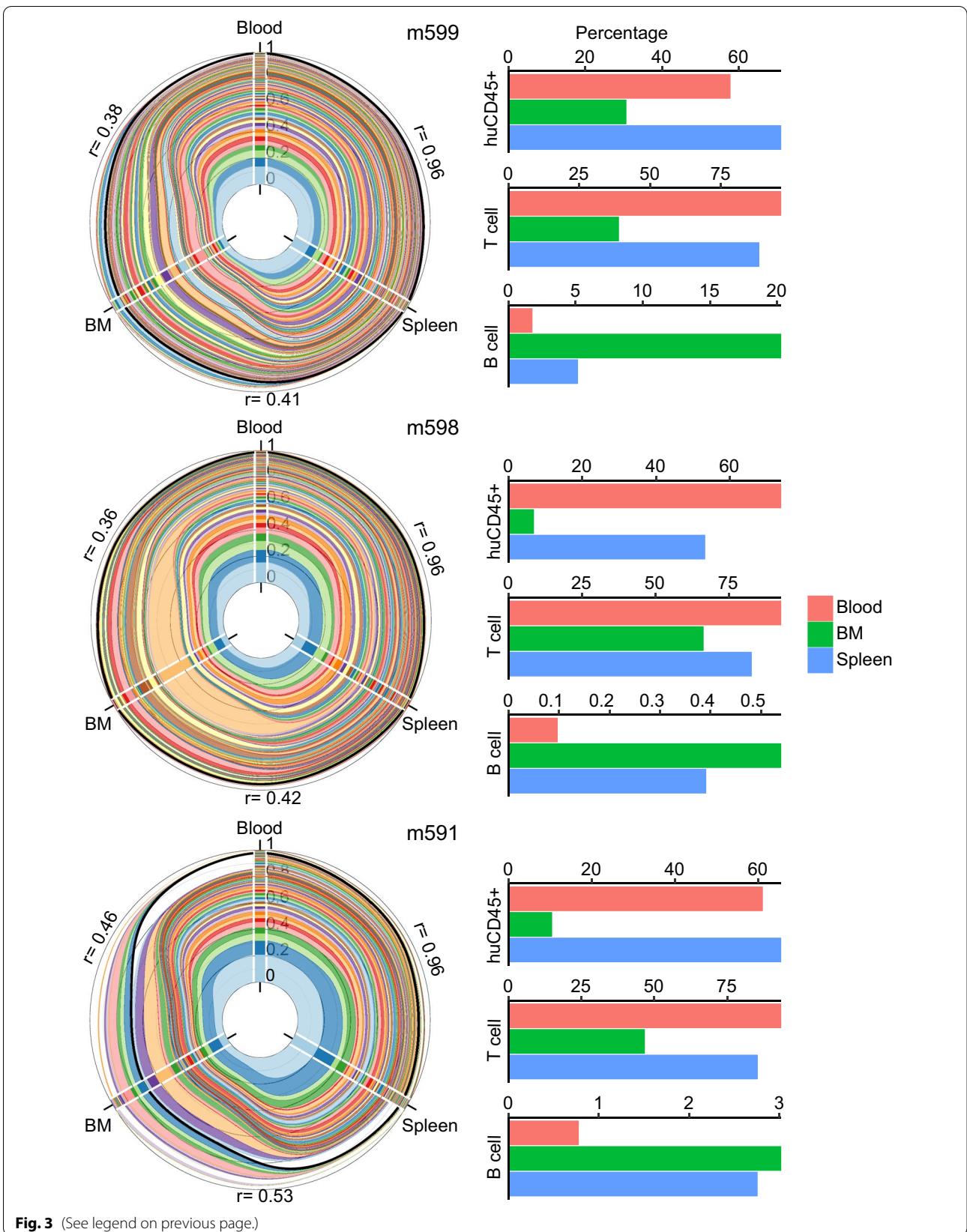
Vector integration bias for transcriptionally active genes in human fetal liver HSPC

For in vivo repopulating clones, we found VIS preference for genic regions in FL-HSPC; however, the transcriptional state and expression level of the VIS-proximal genes prior to vector integration remain unknown. To address this, we analyzed transcriptomic (RNA-seq) and functional genomic (ATAC-seq and ChIP-seq) data from uncultured human FL-HSPC[30] isolated and processed using protocol identical to one used in our study (see Methods). Owing to the direct biological relevance of human FL-HSPC to our humanized BLT mice models, the multi-omics data are well suited to investigate the impact of vector integration on stemness and in vivo repopulation of vector-modified HSPC.

The gene expression (RNA-seq) data show that of all in vivo detected clones, including the persistent clones and top 10 VIS clones, 694 out of 897 VIS (>77%) are within ± 1 Kb of transcriptionally active genes (FPKM > 1) (Fig. 4b outer donut chart). These VIS-proximal active genes include 668 protein coding genes, 17 lncRNA (non-coding genes) and 9 other genes (other non-coding genes and pseudogenes). This is significantly higher than the ~27% of random IS proximal to active genes ($p < 0.001$, Additional file 2: Fig. 6A). The level of transcriptional activity of VIS-proximal genes (based on the FPKM value) was slightly higher than the median expression level of all active genes (Additional file 2: Fig. 5C). Moreover, the median gene activity level (FPKM) varied based on gene biotype, with protein coding proximal genes of all, persistent, and top 10 VIS clones having higher activity than proximal lncRNA or pseudogenes. Similar to in vitro observations using cell lines, primary cells have reported vector integration bias for active genes with low-to-moderate expression [22, 46]. Our in vivo clonal tracking data show VIS bias for moderately active genes and against highly active genes in repopulating clones. These findings suggest that similar to in vitro, in vivo viability and repopulation of gene-modified HSPC is likely linked to expression level of VIS proximal gene.

(See figure on next page.)

Fig. 3 Unique clonal sharing pattern between different tissues. Polar area plots of clonal expansion and sharing in peripheral blood, spleen, and bone marrow (BM). There are three axes, one for each tissue. Stacked bar plot on each axis shows size distribution of clones in the tissue. Each colored stack represents a VIS clone and its thickness shows abundance of the clone. Clones shared between tissues are connected using ribbons with colors matching the clone's stack color in the bar plot. Black line encompasses total size distribution of persistent clones that continuously contributed from week 13 till 19. Clones did not continuously contribute for 6 weeks and were detected at week 19 in blood, spleen, and BM are outside black line. Pearson's r values are shown in black. Bar plots on the right show the percentage of human lymphocytes (huCD45+ cells within the total lymphocytes), human T cell (CD3+ within huCD45 population), and human B cell (CD19+ within huCD45 population) in blood, BM, and spleen of each animal



Epigenetics of FL-HSPC reveals VIS bias for actively transcribed genes

We speculate that similar to expression activity of genes, the chromatin structure of active genes strongly influences vector integration. Previous in vitro studies in cell lines suggested vector integration preference for genomic features such as select histone modification and DNase I hypersensitivity sites. However, neither is such analysis available for human FL-HSPC nor the influence of genomic location of VIS on in vivo engraftment of these HSPC has been explored. To investigate this, we analyzed functional genomic data of uncultured human FL-HSPC [30] with direct biological relevance to our humanized BLT mice models which are constructed by transplanting FL-HSPC in NSG mice. To investigate whether vector preferred open chromatin or chromatin-associated proteins, we analyzed chromatin accessibility (ATAC-seq) ChIP-seq data of eight histone modifications H3K4me3, H3K9ac, H3K9cr, H3K27ac, H3K4me1, H3K79me2, H3K36me3, and H3K27me3 and RNAPolII (chromatin-associated RNA polymerase II), all from uncultured human FL-HSPC [30].

We explored the epigenetic landscape of all the VIS-proximal genes in FL-HSPC using the multi-omics data (Fig. 5a profile plots and heatmaps). For active VIS-proximal genes (FPKM > 1), our analysis showed active transcription markers such as open chromatin region (ATAC-seq peaks) and H3K4me3, H3K9ac, H3K9cr, and H3K27ac enriched regions near TSS, as well as active enhancer markers (H3K27ac and H3K4me1 enriched regions). H3K36me3 and H3K79me2-enriched regions within the gene body of VIS-proximal active genes indicated genes being actively transcribed. We also detected the enrichment of RNAPolII-bound chromatin (RNAPolII) in active gene that coincided with TSS regions. For inactive (FPKM < 1) VIS-proximal genes, these active gene marks were less prominent. Random IS-proximal genes showed similar enrichment profiles in active genes and their lack in inactive genes (Additional file 2: Fig. 6B). Overall, the epigenetic markers of the VIS-proximal genes show that the vector integration is biased for actively transcribed genes. However, further

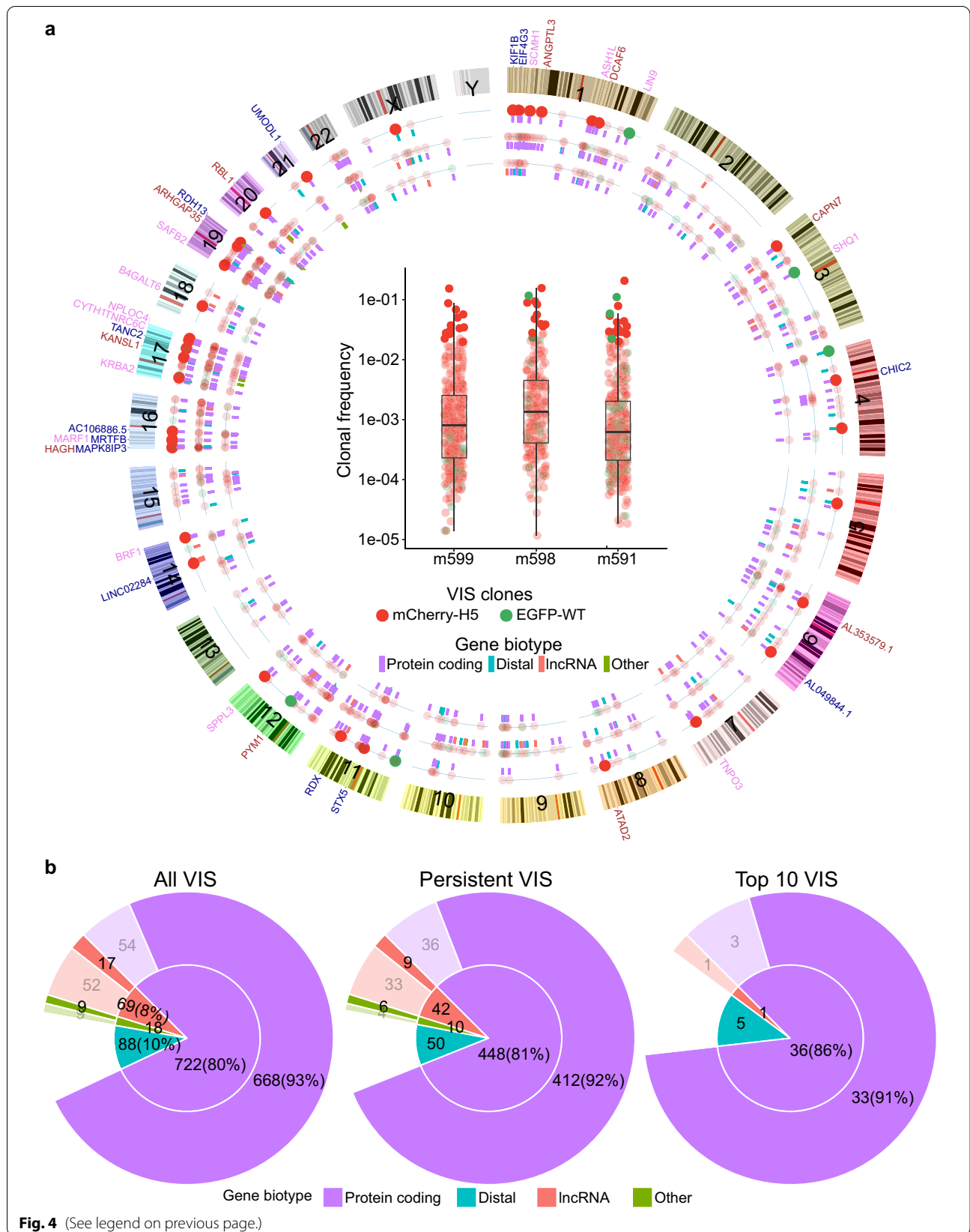
analysis was needed to determine the presence of VIS bias for particular epigenetic features. We investigated possible enrichment of epigenetic features within ± 1 Kb region of VIS (Fig. 5b). We found that vector integration did not occur near open chromatin (ATAC-seq) regions. Similarly, for histones H3K4me3, H3K9ac, H3K9cr, and H3K27ac, high enrichment was not detected near VIS (Fig. 5b lineplots), indicating that vector integration likely avoids transcription regulatory regions such as TSS and enhancers. The enrichment of RNAPolII-bound chromatin (RNAPolII) was also not visible near VIS further confirming that transcription regulatory regions are avoided. In contrast, enrichment of H3K36me3 and H3K79me2 near VIS shows clear preference for actively transcribed regions within gene body. A principal component analysis (PCA) on normalized enrichment levels (RPKM values) over a ± 1 Kb region of VIS (Fig. 5b data) clearly separated H3K36me3 and H3K79me2 from all other features and showed no bias for random IS (Additional file 2: Fig. 7). These results further confirmed the VIS bias for actively transcribed regions.

Vector integrations in repopulating clones were outside gene regulatory regions

In order to further investigate the proximity of VIS to epigenetic features at finer resolution, we called peaks for all the epigenetic markers (described in Methods) and measured the distance between the VIS and the center of the peak. Our analysis showed that 659 (73.5% of total) VIS were near (± 1 Kb) one of the 10 epigenetic features (Additional file 2: Fig. 8). Previous study using epigenetic data from different cell lines found a strong positive association of HIV integration with histones H3K4me1, H3K4me2, H3K4me3, and H3K9ac [47]. However, our analysis showed that only 6 out of 897 VIS were near H3K4me3, a marker for gene TSS, indicating vectors avoided transcription regulatory regions. Occurrence of only 63 VIS in H3K4me1 enriched regions indicating disfavoring of both H3K4 mono- and tri-methylation. Interestingly, compared to H3K4me1 and H3K4me3, more VIS are associated with H3K9ac, H3K9cr, and H3K27ac (Additional file 2: Fig. 8A). Consistent with previous

(See figure on next page.)

Fig. 4 Chromosomal distribution of VIS and its bias for transcriptionally active genes. **a** Circos plot shows genomic location of all 897 VIS from mice m599, m598, and m591. Box plots in the center show maximum frequency of mCherry-H5 (filled red dots) and EGFP-WT (filled green dots) VIS clones in mice m599, m598, and m591 over 6 weeks. Genomic location of mCherry-H5 (filled red dots) and EGFP-WT (filled green dots) VIS clones is plotted on three concentric circles depending on their maximum frequency over 6 weeks: Low-frequency clones with maximum frequency below the first quartile value (innermost concentric circle), High-frequency clones above third quartile value (outermost concentric circle), and medium-frequency clones between first and third quartile (middle concentric circle). Top 10 high-frequency VIS clones are shown in darker colors. Color-coded short line segments under each VIS show gene biotypes of VIS-proximal genes. Gene symbols above ideograms represent genes proximal to the top 10 VIS clones from mice m599 (blue), m598 (brown), and m591 (light pink). **b** Classification of all, persistent, and Top 10 VIS clones based on biotype of VIS-proximal gene. Inner pie chart shows clones classified based on gene biotype of the most proximal gene. Outer Donut plots show number of VIS (in bracket % of VIS) proximal to active (dark color) or inactive (faded colors) genes. Active proximal genes have FPKM > 1



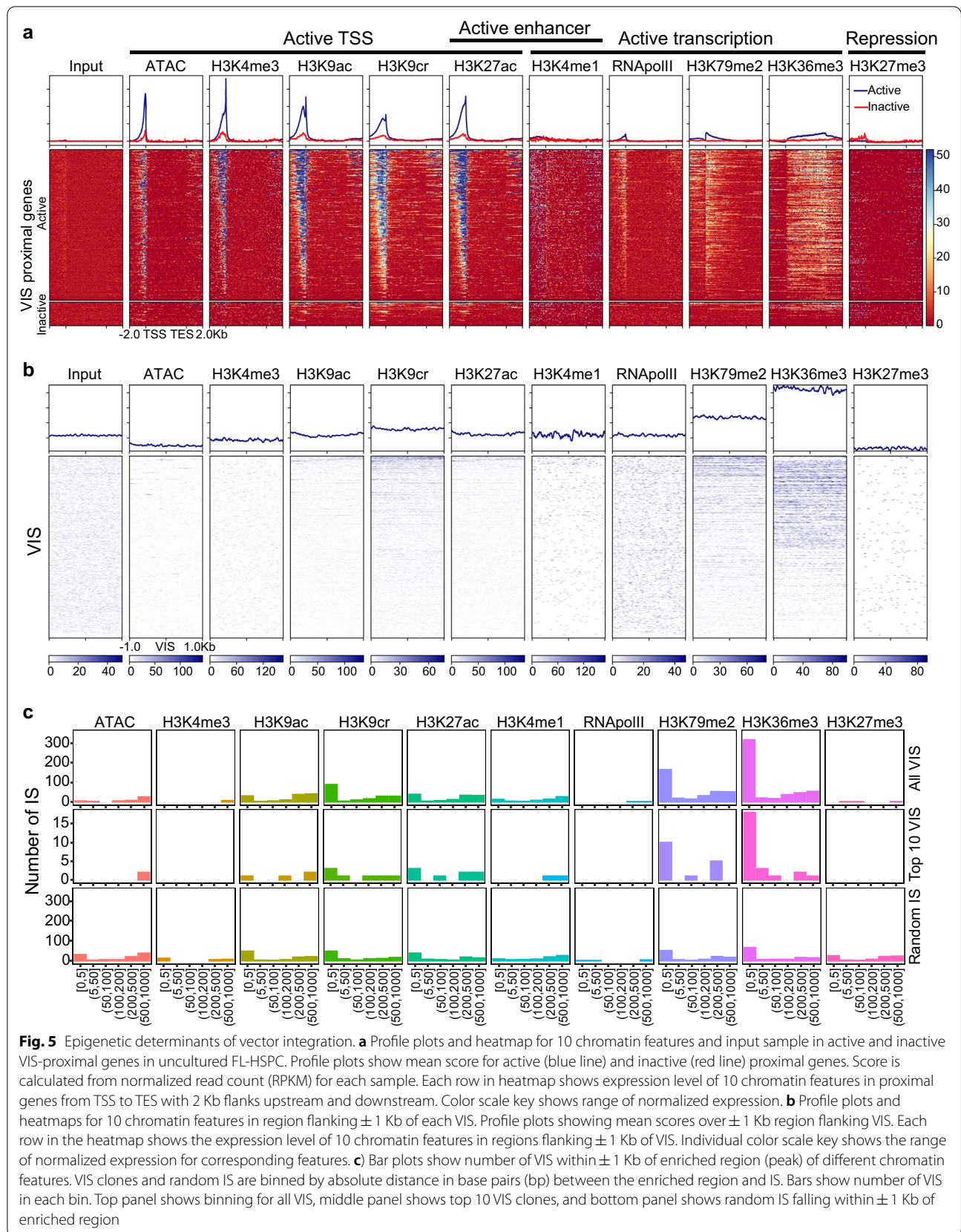


Fig. 5 Epigenetic determinants of vector integration. **a** Profile plots and heatmap for 10 chromatin features and input sample in active and inactive VIS-proximal genes in uncultured FL-HSPC. Profile plots show mean score for active (blue line) and inactive (red line) proximal genes. Score is calculated from normalized read count (RPKM) for each sample. Each row in heatmap shows expression level of 10 chromatin features in proximal genes from TSS to TES with 2 Kb flanks upstream and downstream. Color scale key shows range of normalized expression. **b** Profile plots and heatmaps for 10 chromatin features in region flanking ± 1 Kb of each VIS. Profile plots showing mean scores over ± 1 Kb region flanking VIS. Each row in the heatmap shows the expression level of 10 chromatin features in regions flanking ± 1 Kb of VIS. Individual color scale key shows the range of normalized expression for corresponding features. **c** Bar plots show number of VIS within ± 1 Kb of enriched region (peak) of different chromatin features. VIS clones and random IS are binned by absolute distance in base pairs (bp) between the enriched region and IS. Bars show number of VIS in each bin. Top panel shows binning for all VIS, middle panel shows top 10 VIS clones, and bottom panel shows random IS falling within ± 1 Kb of enriched region

studies, we also observed that very few integration events (3 VIS) were near H3K27me3 enriched regions indicating that in repopulating clones vector integration happened outside of transcriptionally repressed regions (Fig. 5b and c top panel, Additional file 2: Fig. 8). Analysis of open chromatin regions revealed that only 42 out of 897 VIS were in proximity of ATAC-seq peaks. Overall, fewer vector integration events happened in proximity of open chromatin (ATAC peak) or histones modification H3K4me3 and H3K4me1. These findings show that despite preference for active genes, in majority of repopulating clones, vector integration occurred outside the transcription regulatory regions (TSS and enhancers) of the genes. These finding also suggest that integration in regulatory regions may adversely impact the survival of vector-transduced FL-HSPC.

Vector integrations predominantly occurred in H3K36me3 enriched regions

In repopulating clones, we observed bias against transcription regulatory regions of VIS-proximal genes despite significant VIS bias for active genes. While random IS were evenly distributed across all 10 histone marks (Fig. 5c bottom panel, Additional file 2: Fig. 8C), in repopulating clones, VIS distribution skewed toward H3K36me3 and/or H3K79me2 (Fig. 5c top panel; Additional file 2: Fig. 8A-B). Out of 897 repopulating clones, 486 VIS (54% of total VIS) were within ± 1 Kb of histone marks H3K36me3, significantly higher compared to only 11.6% random IS being associated with the histone ($p < 0.001$, Additional file 2: Fig. 6C). For the top 10 most frequent VIS clones, preference for all chromatin features (Fig. 5c middle panel) was also similar to that for all VIS (Fig. 5c top panel). A previous in vitro study using HIV-based vector found that in human CD34+ cells, only 14.5% of vector integrations occurred within ± 1 Kb of H3K36me3 [23]. Compared to in vitro, we found 3.7 times more VIS to be within ± 1 Kb of H3K36me3 [23] for in vivo repopulating clones. Despite significant integration bias for active genes and in particular for histone H3K36me3, the clonal size distribution and repopulation of human cell in hu-BLT mice remained normal. These in vivo findings signify that both the vectors are safe and that vector integration near H3K36me3 appears less detrimental to engraftment and in vivo differentiation of vector-transduced HSPC.

Discussion

In this study, we presented LoVIS-Seq, a new longitudinal clonal tracking method requiring a mere 25 μ l blood or less to monitor clonal behavior of gene-modified cells in small-animal models. LoVIS-Seq quantitatively captured the clonality of both control (mCherry-H1/

H5) and anti-HIV (EGFP-WT) populations in whole blood. We provide the first-ever demonstration of simultaneous polyclonal repopulation of therapeutic vector-modified and control vector-modified cell populations in hu-BLT mouse blood. The polyclonal expansion resembles normal post-transplant HSPC clonal repopulation in mice [13], nonhuman primates [12, 17, 39] and humans [11, 40]. Notably, the clonal frequency data recapitulated the flow cytometric measurements. Persistent clones are major contributors in blood, BM, and spleen. The multi-omics data from uncultured FL-HSPC revealed that vector integration in VIS clones that repopulated in mouse environment is significantly biased toward H3K36me3 and/or H3K79me2 enriched regions. Remarkably, this vector integration bias appears inconsequential with respect to clonal repopulation, as gene-modified HSPC differentiated normally in vivo; this confirms the safety of our therapeutic and control lentiviral vectors.

We recently showed that in hu-BLT mice, monitoring clonal expansion of gene-modified and control populations within the same animal gives an unbiased analysis and allows a more direct assessment of therapeutic vectors [18]. In the current study, we longitudinally tracked both anti-HIV gene-modified and control vector-modified populations in the same hu-BLT mouse. A previous study observed functional compensation wherein highly differentiating HSC clones expand to compensate for other HSC with differentiation deficiencies [48]. Interestingly, our VIS data show coordinated growth of two populations, with few clones from one population expanding to compensate for the decrease in other population. Longitudinal clonal tracking further revealed the dynamics of the HSPC clones that coordinated their expansion to compensate for other HSPC. Despite few clones from each population leading the expansion, the clonal profiles in both populations resemble typical after transplant clonal repopulation confirming safety of both vectors. Since safety and efficacy of multiple vectors can be tested in the same humanized mouse, LoVIS-Seq can reduce both cost and time of vector development.

Previous studies propose that in myeloablated mice, hematopoiesis tends to stabilize around 22 weeks post-transplant [15, 49] while a recent study suggested 16 to 24 weeks [50]; our data indicate clonal stabilization between 17 and 19 weeks post-transplant. Overall, the time scale of clonal repopulation of human HSPC in hu-BLT mice resembles that of mouse HSPC after transplant in mice. Cord blood HSPC transplanted in NGS mice also showed similar clonal behavior, with clonal stabilization starting near week 18 to 20 post-transplant [51, 52]. Although the timescales compare well with other studies, caution is due to consideration of high incidence of graft

versus host-disease-related illnesses in xenograft mouse models.

HIV-1- and HIV-1-based vectors are known to favor transcriptionally active gene dense regions [44, 46], with preference for histone modification H3 acetylation, H4 acetylation and H3K4 methylation [47]. Some studies found no preference for DNase I hypersensitive sites [53] and H3K4 methylation being disfavored [54] and preference for H3K36me3 in Jurkat cells [54]. However, the implications of HIV-1 integration on cell fate are compounded by infection-induced cytotoxicity. Another important study provides a link between HIV-1 integrations in genes related to viral replication and in vivo expansion and persistence of HIV-1-infected cells [45]. However, influence of epigenetic features proximal to HIV-1 IS on clonal expansion and persistence remained unexplored. The HIV-1 integration occurs with assistance from nuclear pore complex and targets the active genes closer to the nuclear pore and disfavor heterochromatin regions and active regions located centrally in the nucleus [55]. In partial agreement with previous studies, our analysis of repopulating VIS clones shows that clones with vector integration in transcriptionally active genes in FL-HSPC have higher probability of in vivo expansion; however, RNA-Seq data indicate bias against highly expressed genes. For in vitro-activated cord blood and BM-derived CD34+HSC, the lentiviral vector showed no preference for highly active genes [22]. This is likely due to either obstruction by transcriptional machinery or detrimental effect of vector integration on survival of the cell. Further investigation of 10 chromatin features showed that vector integration had strong bias toward actively transcribed regions marked by histone modifications H3K36me3 and H3K79me2. This bias could be attributed to LEDGF/p75, a chromatin binding protein essential for efficient HIV-1 integration [56, 57], that binds to integrases of HIV-1 [58, 59] and protects the pre-integration complex from degradation [60], whereas the N-terminal PWWP domain of LEDGF is known to preferentially interact with H3K36me3 [61, 62]. A recent study showed that inhibiting binding of LEDGF to integrases leads to increased distance between IS and H3K36me3 regions. H3K79me2 and H3K36me3 mark the gene body and H3K36me3 marks exons and is positioned near the 5' end of the exon and is correlated with alternative splicing [63, 64]. Thus, VIS in proximity of H3K36me3 are likely to influence co-transcriptional splicing of the proximal gene, as well as expression of the vector itself. Human HSPC clones reconstituting the mice blood have significant vector integration bias that suggest a link between in vivo differentiation of VIS clones and proximity of vector integration to H3K36me3. We are uncertain if these are integration in true pluripotent HSC, but at a minimum

are long-lived multipotent cells. However, tracking of hundreds of single HSPC clones indicated that such transcription events have no adverse impact on the stemness of repopulating vector-modified HSPC.

Another recent study demonstrated use of CRISPR/Cas to introduce barcodes in the long-term HSPC and longitudinally tracked a very limited number of HSPC clones [52]. Comparatively, using LoVIS-Seq, we have tracked ~10 times more HSPC clones per animal with high accuracy and reproducibility. It is pertinent to note that to enable insertion of barcoded donor DNA into the host genome, HSPC need to undergo in vitro preconditioning and incubation before transplantation. The double-stranded breaks introduced by CRISPR/Cas activate DNA damage responses causing significant delays in HSPC proliferation and affect their in vivo repopulation [65]. Additionally, off-target gene-editing by CRISPR/Cas remains a concern. In contrast, LoVIS-Seq does not require preconditioning of HSPC and provides a ready-to-use high-throughput clonal tracking assay for small-animal models. Furthermore, LoVIS-Seq has wider applicability owing to its adaptability to many lentiviral vectors commonly used to insert transgenes or reporter gene such as GFP.

LoVIS-Seq with whole genome amplification allows for quantitative assessment of clonal behavior in small-animal models. However, the accuracy and reproducibility of our assay depend on the initial number of cells used for MDA (Fig. 1d). To minimize sampling errors, it is important to have a sufficient number of gene-marked human cells in each 25 μ l of blood or 10,000 cells to represent each clone in similar proportions as in the bulk population. Higher human reconstitution and gene marking are often desirable and necessary conditions, wherein our assay provides optimal results.

Conclusions

Our study revealed the in vivo dynamics of clonal expansion, emergence of stable stem cell clones, and consequences of vector integration bias on repopulation of human HSPC in mouse environment. Using a mere 25 μ l blood and LTR-indexed vectors, we provide first ever demonstration of dynamic polyclonal expansion in both control and therapeutic vector-modified populations in the same hu-BLT mice. Our study provides insights into clonal dynamics of human HSPC revealing a faster yet normal repopulation of human HSPC in mouse environment. In repopulating clones, we found significant VIS bias for actively transcribed regions specifically for H3K36me3-enriched regions indicative of vector integration in these regions being less detrimental to HSPC. These results provide a framework for understanding the clonal behavior of

human HPSC repopulating in a mouse environment, critical for translating results from humanized mice models to the human settings. Moreover, our new assay provides an efficient tool for multifaceted analysis of clonal dynamics in murine and humanized-mouse models used extensively in infectious disease, cancer, gene therapy, and stem cell research.

Abbreviations

HSPC: Hematopoietic stem and progenitor cells; LoVIS-Seq: Low-volume vector integration site sequencing; BLT: Bone marrow-liver-thymus; FL: Fetal liver; MDA: Multiple displacement amplification.

Supplementary Information

The online version contains supplementary material available at <https://doi.org/10.1186/s13287-021-02601-5>.

Additional file 1. Supplementary data.

Additional file 2. Supplementary text and figures.

Acknowledgements

We thank the technical support from the UCLA Center for AIDS research (CFAR) research cores including the CFAR Gene and Cellular Therapy Core and the CFAR Humanized Mouse Core. We would like also to thank Anna Sahakyan and Ruth Cortado for their help with making lentiviral vectors, transducing human CD34+ HSPC, and performing humanized mouse experiments.

Authors' contributions

GWS, HA and ISYC conceptualized and designed the study; GWS, HA and SK carried out optimization of VIS assays; GWS performed IS sequencing and data analysis; WK, SL, SS, KC and DSA carried out the animal and cell biology experiments and performed flow cytometry; GWS, HA, YL, YX, and XG performed MDA and VIS assays; GWS developed computational workflow; GWS, VS and APP performed statistical and bioinformatics analysis; GWS and ISYC wrote the manuscript; APP, DSA, and SK provided critical appraisal of the manuscript. All authors have read and approved the manuscript.

Funding

This work was supported by grants from the NIH (5U19AI117941, AI110297, AI145038, HL125030, HL126544), CIRM (DR1-01431, TRX-01431-1), the James B. Pendleton Charitable Trust, and the McCarthy Family Foundation (I.S.Y.C).

Availability of data and materials

All VIS data with sequence counts for all the mice are provided in the Additional file 1. Additional file 1 also contains list of VIS-proximal genes. Raw RNA-seq, ATAC-seq, ChIP-seq data of uncultured FL-HSPC from published reference are available in Gene Expression Omnibus (GEO) with the accession code GSE111484 [30].

Declarations

Ethics approval and consent to participate

The UCLA Institutional Review Board (IRB) has determined that fetal tissues from diseased fetuses obtained without patient identification information are not human subjects and its use is exempt from IRB approval. Written informed consent was obtained from patients for use of these tissues for research purposes. All mice were maintained at the UCLA Center for AIDS Research (CFAR) Humanized Mouse Core Laboratory in accordance with a protocol approved by the UCLA Animal Research Committee.

Consent for publication

Not applicable.

Competing interests

Dr. Irvin S.Y. Chen has a financial interest in CSL Behring and Calimmune Inc. No funding was provided by these companies to support this work; Dr. Dong Sung An has a financial interest in Calimmune Inc and CSL Behring that the University of California Regents have licensed intellectual property invented by Dong Sung An, that is being used in the research, to Calimmune Inc. No funding was provided by these companies to support this work. All other authors declare no competing interests.

Author details

¹Department of Microbiology, Immunology and Molecular Genetics, University of California, 615 Charles E. Young Dr. South, BSRB, Rm 173, Los Angeles, CA 90095, USA. ²UCLA AIDS Institute, Los Angeles, CA 90095, USA. ³Division of Hematology-Oncology, David Geffen School of Medicine at UCLA, Los Angeles, CA 90095, USA. ⁴School of Nursing, University of California, Los Angeles, CA 90095, USA. ⁵Present Address: Faculty of Medicine, King Mongkut's Institute of Technology Ladkrabang, Bangkok 10520, Thailand. ⁶Department of Veterinary Biosciences, College of Veterinary Medicine, The Ohio State University, Columbus, OH 43210, USA. ⁷Center for Retrovirus Research, The Ohio State University, Columbus, OH 43210, USA. ⁸Infectious Disease Institute, The Ohio State University, Columbus, OH 43210, USA. ⁹Department of Molecular and Computational Biology, University of Southern California, Los Angeles, CA 90089, USA. ¹⁰Division of Epidemiology, Department of Internal Medicine, University of Utah, Salt Lake City 84108, USA. ¹¹Department of Biostatistics, University of California, Los Angeles 90095, USA.

Received: 21 July 2021 Accepted: 27 August 2021

Published online: 07 October 2021

References

- Shultz LD, Ishikawa F, Greiner DL. Humanized mice in translational biomedical research. *Nat Rev Immunol*. 2007;7(2):118–30.
- Saito Y, Shultz LD, Ishikawa F. Understanding normal and malignant human hematopoiesis using next-generation humanized mice. *Trends Immunol*. 2020;41(8):706–20.
- Garcia-Beltran WF, Claiborne DT, Maldini CR, Phelps M, Vrbanc V, Karpel ME, Krupp KL, Power KA, Boutwell CL, Balazs AB et al: Innate Immune reconstitution in humanized bone marrow-liver-thymus (HuBLT) mice governs adaptive cellular immune function and responses to HIV-1 Infection. *Front Immunol* 2021, 12:667393.
- Melkus MW, Estes JD, Padgett-Thomas A, Gatlin J, Denton PW, Othieno FA, Wege AK, Haase AT, Garcia JV. Humanized mice mount specific adaptive and innate immune responses to EBV and TSST-1. *Nat Med*. 2006;12(11):1316–22.
- Wen J, Wu D, Qin M, Liu C, Wang L, Xu D, Vinters HV, Liu Y, Kranz E, Guan X, et al. Sustained delivery and molecular targeting of a therapeutic monoclonal antibody to metastases in the central nervous system of mice. *Nat Biomed Eng*. 2019;3(9):706–16.
- Heipertz EL, Walker WE: Creation of BLT Humanized mice for sepsis studies. In: *Methods in Molecular Biology*. Springer US; 2021: 137–154.
- Lavender KJ, Williamson BN, Saturday G, Martellaro C, Griffin A, Hasenkrug KJ, Feldmann H, Prescott J: Pathogenicity of ebola and marburg viruses is associated with differential activation of the myeloid compartment in humanized triple knockout-bone marrow, liver, and thymus mice. *The Journal of Infectious Diseases* 2018, 218(suppl_5):S409-S417.
- Crawford LB, Tempel R, Streblow DN, Kreklywich C, Smith P, Picker LJ, Nelson JA, Caposio P. Human cytomegalovirus induces cellular and humoral virus-specific immune responses in humanized BLT mice. *Sci Rep*. 2017;7(1):937.
- Khamaikawin W, Shimizu S, Kamata M, Cortado R, Jung Y, Lam J, Wen J, Kim P, Xie Y, Kim S, et al. Modeling anti-HIV-1 HSPC-based gene therapy in humanized mice previously infected with HIV-1. *Mol Ther Methods Clin Dev*. 2018;9:23–32.
- Maldini CR, Claiborne DT, Okawa K, Chen T, Dopkin DL, Shan X, Power KA, Trifonova RT, Krupp K, Phelps M, et al. Dual CD4-based CAR T cells with distinct costimulatory domains mitigate HIV pathogenesis in vivo. *Nat Med*. 2020;26(11):1776–87.
- Biasco L, Pellin D, Scala S, Dionisio F, Basso-Ricci L, Leonardelli L, Scaramuzza S, Baricordi C, Ferrua F, Cicalessi MP, et al. In vivo tracking of human

- hematopoiesis reveals patterns of clonal dynamics during early and steady-state reconstitution phases. *Cell Stem Cell*. 2016;19(1):107–19.
12. Kim S, Kim N, Presson AP, Metzger ME, Bonifacino AC, Seh1 M, Chow SA, Crooks GM, Dunbar CE, An DS, et al. Dynamics of HSPC repopulation in nonhuman primates revealed by a decade-long clonal-tracking study. *Cell Stem Cell*. 2014;14(4):473–85.
 13. Verovskaya E, Broekhuis MJ, Zwart E, Ritsema M, van Os R, de Haan G, Bystrykh LV. Heterogeneity of young and aged murine hematopoietic stem cells revealed by quantitative clonal analysis using cellular barcoding. *Blood*. 2013;122(4):523–32.
 14. Cheung AM, Nguyen LV, Carles A, Beer P, Miller PH, Knapp DJ, Dhillon K, Hirst M, Eaves CJ. Analysis of the clonal growth and differentiation dynamics of primitive barcoded human cord blood cells in NSG mice. *Blood*. 2013;122(18):3129–37.
 15. Brewer C, Chu E, Chin M, Lu R. Transplantation dose alters the differentiation program of hematopoietic stem cells. *Cell Rep*. 2016;15(8):1848–57.
 16. Thielecke L, Aranyosy T, Dahl A, Tiwari R, Roeder I, Geiger H, Fehse B, Glauche I, Cornils K. Limitations and challenges of genetic barcode quantification. *Sci Rep*. 2017;7:43249.
 17. Barber-Axthelm IM, Barber-Axthelm V, Sze KY, Zhen A, Suryawanshi GW, Chen IS, Zack JA, Kitchen SG, Kiem HP, Peterson CW: Stem cell-derived CART cells traffic to HIV reservoirs in macaques. *JCI Insight* 2021, 6(1).
 18. Suryawanshi GW, Khamaikawin W, Wen J, Shimizu S, Arokium H, Xie Y, Wang E, Kim S, Choi H, Zhang C et al: The clonal repopulation of HSPC gene modified with anti-HIV-1 RNAi is not affected by preexisting HIV-1 infection. *Sci Adv* 2020, 6(30):eaay9206.
 19. Modlich U, Navarro S, Zychlinski D, Maetzig T, Knoess S, Brugman MH, Schambach A, Charrier S, Galy A, Thrasher AJ, et al. Insertional transformation of hematopoietic cells by self-inactivating lentiviral and gammaretroviral vectors. *Mol Ther*. 2009;17(11):1919–28.
 20. Montini E, Cesana D, Schmidt M, Sanvito F, Bartholomae CC, Ranzani M, Benedicenti F, Sergi LS, Ambrosi A, Ponzoni M, et al. The genotoxic potential of retroviral vectors is strongly modulated by vector design and integration site selection in a mouse model of HSC gene therapy. *J Clin Invest*. 2009;119(4):964–75.
 21. Espinoza DA, Fan X, Yang D, Cordes SF, Truitt LL, Calvo KR, Yabe IM, Demirci S, Hope KJ, Hong SG, et al. Aberrant clonal hematopoiesis following lentiviral vector transduction of HSPCs in a rhesus macaque. *Mol Ther*. 2019;27(6):1074–86.
 22. Cattoglio C, Facchini G, Sartori D, Antonelli A, Miccio A, Cassani B, Schmidt M, von Kalle C, Howe S, Thrasher AJ, et al. Hot spots of retroviral integration in human CD34+ hematopoietic cells. *Blood*. 2007;110(6):1770–8.
 23. Cattoglio C, Pellin D, Rizzi E, Maruggi G, Corti G, Miselli F, Sartori D, Guffanti A, Di Serio C, Ambrosi A, et al. High-definition mapping of retroviral integration sites identifies active regulatory elements in human multipotent hematopoietic progenitors. *Blood*. 2010;116(25):5507–17.
 24. Esteban JA, Salas M, Blanco L: Fidelity of phi 29 DNA polymerase. Comparison between protein-primed initiation and DNA polymerization. *J Biol Chem* 1993, 268(4):2719–2726.
 25. Paez JG, Lin M, Beroukhir M, Lee JC, Zhao X, Richter DJ, Gabriel S, Herman P, Sasaki H, Altshuler D et al: Genome coverage and sequence fidelity of phi29 polymerase-based multiple strand displacement whole genome amplification. *Nucleic Acids Res* 2004, 32(9):e71.
 26. He F, Zhou W, Cai R, Yan T, Xu X. Systematic assessment of the performance of whole-genome amplification for SNP/CNV detection and beta-thalassemia genotyping. *J Hum Genet*. 2018;63(4):407–16.
 27. Einkauf KB, Lee GQ, Gao C, Sharaf R, Sun XM, Hua S, Chen SMY, Jiang CY, Lian XD, Chowdhury FZ, et al. Intact HIV-1 proviruses accumulate at distinct chromosomal positions during prolonged antiretroviral therapy. *J Clin Invest*. 2019;129(3):988–98.
 28. Patro SC, Brandt LD, Bale MJ, Halvas EK, Joseph KW, Shao W, Wu XL, Guo S, Murrell B, Wiegand A, et al. Combined HIV-1 sequence and integration site analysis informs viral dynamics and allows reconstruction of replicating viral ancestors. *Proc Natl Acad Sci USA*. 2019;116(51):25891–9.
 29. Shimizu S, Hong P, Arumugam B, Pokomo L, Boyer J, Koizumi N, Kittipongdaja P, Chen A, Bristol G, Galic Z, et al. A highly efficient short hairpin RNA potently down-regulates CCR5 expression in systemic lymphoid organs in the hu-BLT mouse model. *Blood*. 2010;115(8):1534–44.
 30. Calvanese V, Nguyen AT, Bolan TJ, Vavilina A, Su T, Lee LK, Wang Y, Lay FD, Magnusson M, Crooks GM, et al. MLLT3 governs human haematopoietic stem-cell self-renewal and engraftment. *Nature*. 2019;576(7786):281–6.
 31. Kim S, Kim N, Presson AP, An DS, Mao SH, Bonifacino AC, Donahue RE, Chow SA, Chen IS. High-throughput, sensitive quantification of repopulating hematopoietic stem cell clones. *J Virol*. 2010;84(22):11771–80.
 32. Suryawanshi GW, Xu S, Xie Y, Chou T, Kim N, Chen ISY, Kim S: Bidirectional retroviral integration site PCR methodology and quantitative data analysis workflow. *J Vis Exp* 2017(124).
 33. Zhao M, Lee WP, Garrison EP, Marth GT: SSW library: an SIMD Smith-Waterman C/C++ library for use in genomic applications. *PLoS One* 2013, 8(12):e82138.
 34. Rényi A: On measures of entropy and information. *Proceedings of the Fourth Berkeley Symposium on Mathematical Statistics and Probability, Volume 1: Contributions to the Theory of Statistics* 1961.
 35. Dobin A, Davis CA, Schlesinger F, Drenkow J, Zaleski C, Jha S, Batut P, Chaisson M, Gingeras TR. STAR: ultrafast universal RNA-seq aligner. *Bioinformatics*. 2013;29(1):15–21.
 36. Trapnell C, Roberts A, Goff L, Pertea G, Kim D, Kelley DR, Pimentel H, Salzberg SL, Rinn JL, Pachter L. Differential gene and transcript expression analysis of RNA-seq experiments with TopHat and Cufflinks. *Nat Protoc*. 2012;7(3):562–78.
 37. Ramirez F, Ryan DP, Gruning B, Bhardwaj V, Kilpert F, Richter AS, Heyne S, Dundar F, Manke T. deepTools2: a next generation web server for deep-sequencing data analysis. *Nucleic Acids Res*. 2016;44(W1):W160–165.
 38. Koo TK, Li MY. A guideline of selecting and reporting intraclass correlation coefficients for reliability research (vol 15, pg 155, 2016). *J Chiropr Med*. 2017;16(4):346–346.
 39. Wu C, Li B, Lu R, Koelle SJ, Yang Y, Jares A, Krouse AE, Metzger M, Liang F, Lore K, et al. Clonal tracking of rhesus macaque hematopoiesis highlights a distinct lineage origin for natural killer cells. *Cell Stem Cell*. 2014;14(4):486–99.
 40. Aiuti A, Biasco L, Scaramuzza S, Ferrua F, Cicalese MP, Baricordi C, Dionisio F, Calabria A, Giannelli S, Castiello MC, et al. Lentiviral hematopoietic stem cell gene therapy in patients with Wiskott-Aldrich syndrome. *Science*. 2013;341(6148):1233151.
 41. Shannon CE. A mathematical theory of communication. *Bell Syst Tech J*. 1948;27(3):379–423.
 42. Simpson EH. Measurement of diversity. *Nature*. 1949;163(4148):688–688.
 43. Wu C, Espinoza DA, Koelle SJ, Potter EL, Lu R, Li B, Yang D, Fan X, Donahue RE, Roederer M, et al. Geographic clonal tracking in macaques provides insights into HSPC migration and differentiation. *J Exp Med*. 2018;215(1):217–32.
 44. Schroder AR, Shinn P, Chen H, Berry C, Ecker JR, Bushman F. HIV-1 integration in the human genome favors active genes and local hotspots. *Cell*. 2002;110(4):521–9.
 45. Haworth KG, Scheffer LE, Norgaard ZK, Ironside C, Adair JE, Kiem HP: HIV infection results in clonal expansions containing integrations within pathogenesis-related biological pathways. *JCI Insight* 2018, 3(13).
 46. Mitchell RS, Beitzel BF, Schroder AR, Shinn P, Chen H, Berry CC, Ecker JR, Bushman FD. Retroviral DNA integration: ASLV, HIV, and MLV show distinct target site preferences. *PLoS Biol*. 2004;2(8):E234.
 47. Wang GP, Ciuffi A, Leipzig J, Berry CC, Bushman FD. HIV integration site selection: analysis by massively parallel pyrosequencing reveals association with epigenetic modifications. *Genome Res*. 2007;17(8):1186–94.
 48. Nguyen L, Wang Z, Chowdhury AY, Chu E, Eerdeng J, Jiang D, Lu R: Functional compensation between hematopoietic stem cell clones in vivo. *Embo Rep* 2018, 19(8).
 49. Lu R, Czechowicz A, Seita J, Jiang D, Weissman IL. Clonal-level lineage commitment pathways of hematopoietic stem cells in vivo. *Proc Natl Acad Sci U S A*. 2019;116(4):1447–56.
 50. Rodriguez-Fraticelli AE, Weinreb C, Wang SW, Migueles RP, Jankovic M, Usart M, Klein AM, Lowell S, Camargo FD. Single-cell lineage tracing unveils a role for TCF15 in haematopoiesis. *Nature*. 2020;583(7817):585–9.
 51. Belderbos ME, Jacobs S, Koster TK, Ausema A, Weersing E, Zwart E, de Haan G, Bystrykh LV. Donor-to-donor heterogeneity in the clonal dynamics of transplanted human cord blood stem cells in murine xenografts. *Biol Blood Marrow Transplant*. 2020;26(1):16–25.
 52. Ferrari S, Jacob A, Beretta S, Unali G, Albano L, Vavassori V, Cittaro D, Lazarevic D, Brombin C, Cugnata F et al: Efficient gene editing of human long-term hematopoietic stem cells validated by clonal tracking. *Nat Biotechnol* 2020.
 53. Lewinski MK, Yamashita M, Emerman M, Ciuffi A, Marshall H, Crawford G, Collins F, Shinn P, Leipzig J, Hannehalli S et al: Retroviral DNA integration:

- viral and cellular determinants of target-site selection. *PLoS Pathog* 2006, 2(6):e60.
54. Lelek M, Casartelli N, Pellin D, Rizzi E, Souque P, Severgnini M, Di Serio C, Fricke T, Diaz-Griffero F, Zimmer C et al: Chromatin organization at the nuclear pore favours HIV replication. *Nat Commun* 2015, 6.
 55. Marini B, Kertesz-Farkas A, Ali H, Lucic B, Lisek K, Manganaro L, Pongor S, Luzzati R, Recchia A, Mavilio F, et al. Nuclear architecture dictates HIV-1 integration site selection. *Nature*. 2015;521(7551):227–31.
 56. Llano M, Saenz DT, Meehan A, Wongthida P, Peretz M, Walker WH, Teo W, Poeschla EM. An essential role for LEDGF/p75 in HIV integration. *Science*. 2006;314(5798):461–4.
 57. Ciuffi A, Llano M, Poeschla E, Hoffmann C, Leipzig J, Shinn P, Ecker JR, Bushman F. A role for LEDGF/p75 in targeting HIV DNA integration. *Nat Med*. 2005;11(12):1287–9.
 58. Vanegas M, Llano M, Delgado S, Thompson D, Peretz M, Poeschla E. Identification of the LEDGF/p75 HIV-1 integrase-interaction domain and NLS reveals NLS-independent chromatin tethering. *J Cell Sci*. 2005;118(Pt 8):1733–43.
 59. Cherepanov P, Sun ZYJ, Rahman S, Maertens G, Wagner G, Engelman A. Solution structure of the HIV-1 integrase-binding domain in LEDGF/p75. *Nat Struct Mol Biol*. 2005;12(6):526–32.
 60. Llano M, Delgado S, Vanegas M, Poeschla EM. Lens epithelium-derived growth factor/p75 prevents proteasomal degradation of HIV-1 integrase. *J Biol Chem*. 2004;279(53):55570–7.
 61. Eidahl JO, Crowe BL, North JA, McKee CJ, Shkriabai N, Feng L, Plumb M, Graham RL, Gorelick RJ, Hess S, et al. Structural basis for high-affinity binding of LEDGF PWWP to mononucleosomes. *Nucleic Acids Res*. 2013;41(6):3924–36.
 62. Pradeepa MM, Sutherland HG, Ule J, Grimes GR, Bickmore WA: Psip1/Ledgf p52 binds methylated histone H3K36 and splicing factors and contributes to the regulation of alternative splicing. *PLoS Genet* 2012, 8(5):e1002717.
 63. Hon G, Wang W, Ren B: Discovery and annotation of functional chromatin signatures in the human genome. *PLoS Comput Biol* 2009, 5(11):e1000566.
 64. Luco RF, Pan Q, Tominaga K, Blencowe BJ, Pereira-Smith OM, Misteli T. Regulation of alternative splicing by histone modifications. *Science*. 2010;327(5968):996–1000.
 65. Schirotti G, Conti A, Ferrari S, Della Volpe L, Jacob A, Albano L, Beretta S, Calabria A, Vavassori V, Gasparini P, et al. Precise gene editing preserves hematopoietic stem cell function following transient p53-Mediated DNA damage response. *Cell Stem Cell*. 2019;24(4):551–65.

Publisher's Note

Springer Nature remains neutral with regard to jurisdictional claims in published maps and institutional affiliations.

Ready to submit your research? Choose BMC and benefit from:

- fast, convenient online submission
- thorough peer review by experienced researchers in your field
- rapid publication on acceptance
- support for research data, including large and complex data types
- gold Open Access which fosters wider collaboration and increased citations
- maximum visibility for your research: over 100M website views per year

At BMC, research is always in progress.

Learn more biomedcentral.com/submissions

