

# UCSF

## UC San Francisco Previously Published Works

### Title

SOX9 maintains human foetal lung tip progenitor state by enhancing WNT and RTK signalling.

### Permalink

<https://escholarship.org/uc/item/76v87865>

### Journal

The EMBO Journal, 41(21)

### Authors

Sun, Dawei

Llora Batlle, Oriol

van den Aamele, Jelle

et al.

### Publication Date












2022-11-02

### DOI

10.15252/emj.2022111338

Peer reviewed

# SOX9 maintains human foetal lung tip progenitor state by enhancing WNT and RTK signalling

Dawei Sun<sup>1,2</sup> , Oriol Llorca Batlle<sup>1,2</sup> , Jelle van den Aamele<sup>1,2,†</sup> , John C Thomas<sup>1,3</sup> , Peng He<sup>4,5</sup> , Kyungtae Lim<sup>1,2</sup> , Walfred Tang<sup>1,2</sup> , Chufan Xu<sup>1,‡</sup>, Kerstin B Meyer<sup>4</sup> , Sarah A Teichmann<sup>4,6</sup>, John C Marioni<sup>4,5,7</sup>, Stephen P Jackson<sup>1,3</sup> , Andrea H Brand<sup>1,2</sup>  & Emma L Rawlins<sup>1,2,\*</sup> 

## Abstract

The balance between self-renewal and differentiation in human foetal lung epithelial progenitors controls the size and function of the adult organ. Moreover, progenitor cell gene regulation networks are employed by both regenerating and malignant lung cells, where modulators of their effects could potentially be of therapeutic value. Details of the molecular networks controlling human lung progenitor self-renewal remain unknown. We performed the first CRISPRi screen in primary human lung organoids to identify transcription factors controlling progenitor self-renewal. We show that SOX9 promotes proliferation of lung progenitors and inhibits precocious airway differentiation. Moreover, by identifying direct transcriptional targets using Targeted DamID, we place SOX9 at the centre of a transcriptional network, which amplifies WNT and RTK signalling to stabilise the progenitor cell state. In addition, the proof-of-principle CRISPRi screen and Targeted DamID tools establish a new workflow for using primary human organoids to elucidate detailed functional mechanisms underlying normal development and disease.

**Keywords** CRISPRi screen; ETVs; Lung organoids; SOX9; Targeted DamID

**Subject Categories** Chromatin, Transcription & Genomics; Development; Stem Cells & Regenerative Medicine

**DOI** 10.15252/emj.2022111338 | Received 3 April 2022 | Revised 11 August 2022 | Accepted 16 August 2022 | Published online 19 September 2022

**The EMBO Journal (2022) 41: e111338**

## Introduction

Respiratory disease is a leading cause of human mortality and morbidity worldwide (Labaki & Han, 2020). Multiple studies suggest

that changes in human lung development can contribute to adult-onset respiratory disease (Smith *et al*, 2018; Sakornsakolpat *et al*, 2019). Lung adenocarcinomas often take on an embryonic progenitor phenotype (Pacheco-Pinedo *et al*, 2011; Laughney *et al*, 2020). Moreover, it is speculated that a long-term cure for many respiratory diseases would be to trigger developmental processes in diseased lungs to regenerate the tissue (Morrisey & Hogan, 2010; Kotton & Morrisey, 2014; Nikolić *et al*, 2018). It is therefore crucial to understand the detailed molecular networks, which control human foetal lung progenitor self-renewal and differentiation.

Mouse research has revealed that cells located at the distal tips of the branching lung epithelium are multipotent progenitors, which give rise to all lung epithelial lineages during development (Rawlins *et al*, 2009; Alanis *et al*, 2014). The cell signalling and transcription factor (TF) networks controlling mouse tip progenitors are increasingly well described (Okubo *et al*, 2005; Zhang *et al*, 2008; Chang *et al*, 2013; Rockich *et al*, 2013; Herriges *et al*, 2015; Ostrin *et al*, 2018; Gerner-Mauro *et al*, 2020). Analogous tip progenitor cells with similar gene expression profiles and multipotent differentiation capacity are also found in the developing human lung (Nikolić *et al*, 2017; Danopoulos *et al*, 2018; Miller *et al*, 2018). Moreover, induced pluripotent stem cell (iPSC)-based and human tissue-derived 3D organoid culture systems have been established to recapitulate key features of the *in vivo* human tip progenitors (Chen *et al*, 2017; Nikolić *et al*, 2017; Miller *et al*, 2018). These human models require many of the signals known to function in mouse lung development, including WNT and FGFs (Nikolić *et al*, 2017; Miller *et al*, 2018). Human *in vitro* models provide new opportunities to elucidate the details of the molecular events, which control human lung development. However, accounting for the variable genetic background of primary human samples to reach a robust conclusion on biological questions remains challenging, particularly

1 Wellcome Trust/CRUK Gurdon Institute, University of Cambridge, Cambridge, UK

2 Department of Physiology, Development and Neuroscience, University of Cambridge, Cambridge, UK

3 Department of Biochemistry, University of Cambridge, Cambridge, UK

4 Wellcome Sanger Institute, Cambridge, UK

5 European Molecular Biology Laboratory, European Bioinformatics Institute (EMBL-EBI), Cambridge, UK

6 Department of Physics/Cavendish Laboratory, University of Cambridge, Cambridge, UK

7 Cancer Research UK Cambridge Institute, University of Cambridge, Cambridge, UK

\*Corresponding author. Tel: +44 1223 331164; E-mail: elr21@cam.ac.uk

†Present address: Department of Clinical Neurosciences and MRC Mitochondrial Biology Unit, University of Cambridge, Cambridge, UK

‡Present address: Department of Anaesthesiology and Surgical Intensive Care Unit, Xinhua Hospital, Shanghai Jiaotong University School of Medicine, Shanghai, China

as little data are available on the extent of biological variability in these cells.

CRISPR genetic perturbation tools have transformed biology research (Jinek et al, 2012; Cho et al, 2013; Cong et al, 2013; Mali et al, 2013). Large-scale functional genomic studies using genome-wide screens in cancer cell lines have revealed previously unappreciated genetic regulators and accelerated the drug discovery process (Sanjana et al, 2014; Doench et al, 2016; Bowden et al, 2020). CRISPR screens have started to be applied to 3D organoid systems, which can more faithfully recapitulate *in vivo* biological processes (Planas-Paz et al, 2019; Ringel et al, 2020; Murakami et al, 2021), but so far have required large cell numbers to overcome variability. CRISPR interference (CRISPRi) is particularly useful for the generation of homogenous knock-downs to study essential gene function (Gilbert et al, 2013, 2014; Mandegar et al, 2016). CRISPRi screens have been established in cancer cell lines and iPSCs (Gilbert et al, 2014; Horlbeck et al, 2016; Tian et al, 2019, 2021), but not yet in organoid cultures.

We used a CRISPRi screen to probe systematically the function of 49 transcription factors (TFs) in human foetal lung tip progenitors. Our screen identified TFs that positively and negatively regulate tip progenitor self-renewal, including SOX9. We show that SOX9 functions by both promoting proliferation and inhibiting differentiation. Moreover, by combining an inducible CRISPRi system with Targeted DamID (TaDa) (Southall et al, 2013; Marshall & Brand, 2015; Cheatham et al, 2018), we have identified direct SOX9 transcriptional targets. These include two receptor tyrosine kinase (RTK) signalling effectors, *ETV4* and *ETV5*, which we show work with SOX9 to coregulate the tip progenitor programme, and *LGR5*, which is known to enhance WNT signalling activity. These data place SOX9 at the intersection of WNT and RTK signalling in the developing human lungs. Our use of a state-of-the-art CRISPRi screen and TaDa to study TF function in a human tissue-derived organoid system will facilitate future functional studies of the coding and noncoding genome in organoid-based research.

## Results

### A CRISPRi screen identified TFs that regulate lung progenitor self-renewal

To investigate systematically the TF network that regulates developing human lung epithelial tip progenitor cells, we performed a pooled CRISPRi screen in primary organoids. We used a tip progenitor cell organoid system, which faithfully recapitulates key markers and signalling pathways of the *in vivo* cells (Nikolić et al, 2017). Our knock-down system (Sun et al, 2021) uses sequential lentiviral induction of an inducible CRISPRi vector, in which catalytically inactive Cas9 fused to the transcriptional repressor KRAB is controlled by doxycycline (Dox) and trimethoprim (TMP), and a constitutive gRNA (Fig 1A and B). After 4–5 day of drug treatment, targeted gene knock-down can be achieved (Fig 1C).

We designed a “drop-out” screening strategy to identify TFs which promoted, or inhibited, human foetal lung tip progenitor self-renewal (Fig 1D). We curated a lentiviral CRISPRi gRNA library containing on average 5 gRNAs per gene against 49 TFs exhibiting transcriptional enrichment and/or high abundance in tip progenitor cells (Fig EV1A; Dataset EV1), together with positive controls (4 essential genes) and negative controls (33 non-targeting gRNAs), 300 gRNAs total. Library sequencing confirmed that all gRNAs were successfully cloned, except one gRNA against *MYCN* (Fig EV1B). Two independent parental organoid lines (biological replicates) with inducible CRISPRi were dissociated to single cells and transduced with the gRNA library at ~15% infection rate (Fig 1D), to ensure that most infected cells received one gRNA. At least 500 cells were infected per gRNA. TagRFP<sup>+</sup>EGFP<sup>+</sup> double positive cells (containing both inducible CRISPRi and gRNA) were harvested 3 days after infection and we observed highly consistent gRNA abundance between transduced parental lines (biological replicates) (Fig EV1C). To test the robustness of the human foetal lung organoids for such screens, we also split the TagRFP<sup>+</sup>EGFP<sup>+</sup> cells from one of the

**Figure 1. A CRISPRi screen identified crucial factors regulating human foetal lung progenitor cell self-renewal.**

- Schematic of introducing inducible CRISPRi system into the organoid cells using serial lentiviral infection.
  - Schematic of the inducible CRISPRi system. The inducible CRISPRi system was controlled by both Dox inducible system at mRNA level and TMP stabilisation of DHFR destabilising domain at protein level to achieve a tight control of CRISPRi function as previously reported (Sun et al, 2021).
  - Representative flow cytometry results showing CD71, a cell surface marker, can be efficiently knocked-down in the majority of organoid cells after 5 day of Dox and TMP treatment.  $N = 3$  different organoid lines and 3 different gRNAs for CD71 were used. Mean  $\pm$  SEM is labelled.
  - Workflow for a focussed library CRISPRi screen for transcription factors regulating human foetal lung tip progenitor cell self-renewal. Parental organoid lines with inducible CRISPRi system were established by lentiviral transduction and expanded. A CRISPRi gRNA library of 300 gRNAs was packaged into lentivirus and was used to infect single cells from two independent parental inducible CRISPRi organoid lines with an infection efficiency of ~15%. TagRFP<sup>+</sup>EGFP<sup>+</sup> double positive organoid cells were collected. A fraction of cells was frozen for analysis of gRNA abundance in the starting population. The rest were seeded in Matrigel, given 8 day to recover and grown into small organoid colonies before treatment with Dox and TMP. Organoids were cultured in self-renewing medium with Dox and TMP for 2 week before harvest. Organoids were physically broken into pieces for passaging twice during this period. TagRFP<sup>high</sup>EGFP<sup>+</sup> and TagRFP<sup>low</sup>EGFP<sup>+</sup> fractions were collected separately for downstream genomic DNA isolation and analysis.
  - Volcano plot summarising gRNA abundance changes for each target gene. Strong depletion hits ( $-\log_{10}(\text{FDR}) > 2$  and  $\log_2(\text{FC}) < 0$ ) dark blue; strong enrichment hits ( $-\log_{10}(\text{FDR}) > 2$  and  $\log_2(\text{FC}) > 0$ ) red; intermediate depletion hits ( $1 < -\log_{10}(\text{FDR}) < 2$  and  $\log_2(\text{FC}) < 0$ ) light blue; unchanged genes grey. FDR, false discovery rate.
  - Schematic of the experimental design for serial passaging assay to validate gene knock-down effects on self-renewal. ~3,000 TagRFP<sup>high</sup>EGFP<sup>+</sup> double positive cells were harvested for each condition and seeded in Matrigel. Organoid cells were given 8 day to recover and grown into small colonies before treating with Dox and TMP. Organoids were then maintained in Dox and TMP and serially passaged by breaking into pieces every 3–4 day.
  - Summary of serial passaging assay results for different knock-downs. Three independent organoid lines each were transduced with two different gRNAs against the gene targets, making six organoid lines altogether.
  - Representative wide field images to show organoid growth of the indicated gene knock-down organoids at the indicated passage number. Scale bars denote 1 mm.
- Source data are available online for this figure.

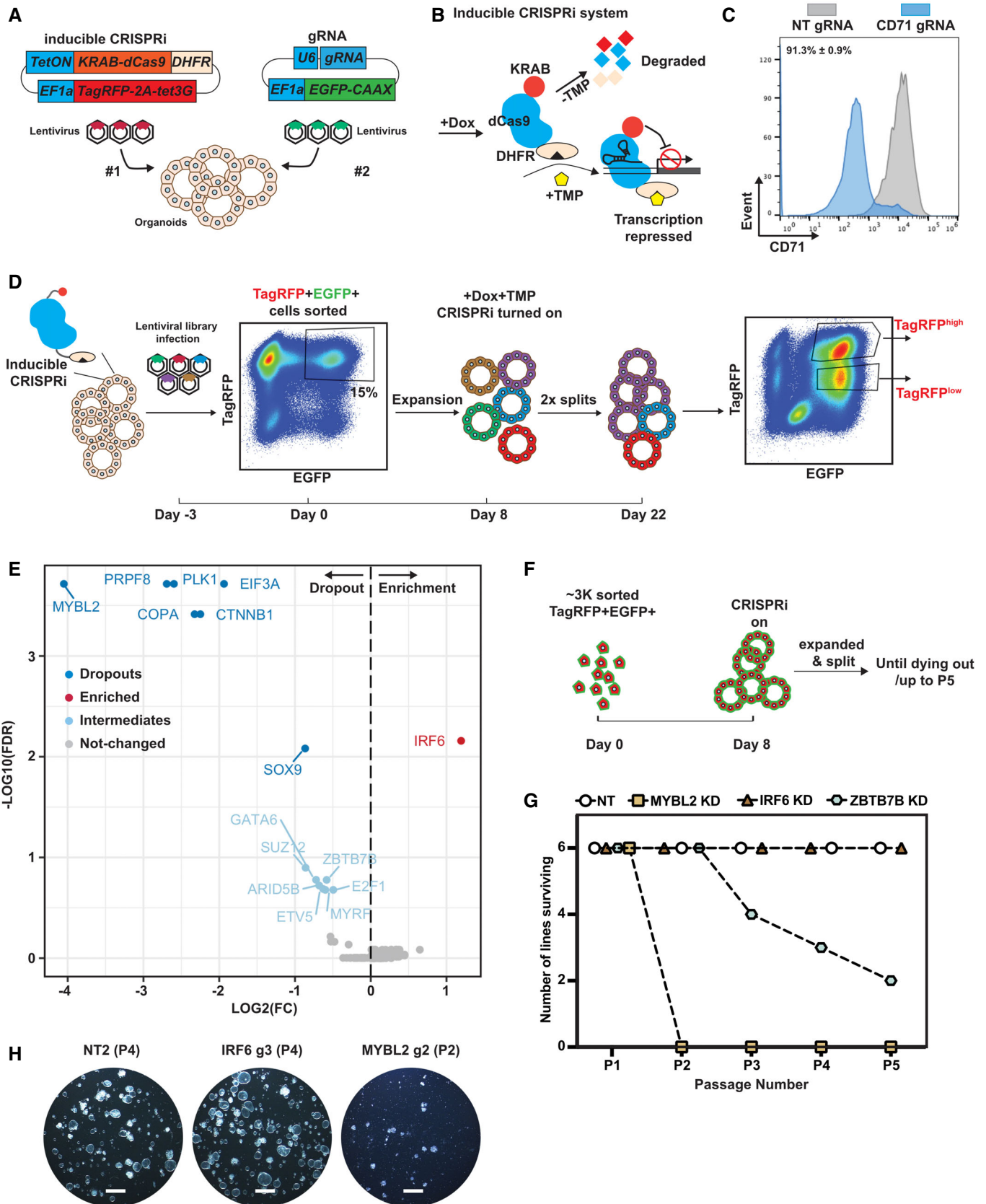


Figure 1.

biological replicates and assayed them separately as technical replicates. Organoid cells were recovered for 8 days, then CRISPRi was switched on for 2 weeks of culture. Two different cell populations (TagRFP<sup>high</sup>EGFP<sup>+</sup> and TagRFP<sup>low</sup>EGFP<sup>+</sup>) emerged at the end of the screen (Fig 1D). This was likely due to the inducible CRISPRi vector being modified by the cellular epigenetic machinery in long-term cultures. We harvested TagRFP<sup>high/low</sup> populations separately for downstream gRNA abundance analysis using next-generation sequencing (NGS).

All expected gRNA sequences were present in all downstream NGS results (Dataset EV2). The consistency between the technical replicates ( $R = 0.79\text{--}0.89$ ) demonstrated the feasibility of performing a pooled CRISPRi screen using ~ 500 cells per gRNA in the human foetal lung organoid system (Fig EV1D). Our gRNA correlation dropped to 0.57 when comparing different parental lines (biological replicates) (Fig EV1E), as might be expected due to the variable nature of organoids from different donors. The gRNA abundance of the TagRFP<sup>high</sup>EGFP<sup>+</sup> versus TagRFP<sup>low</sup>EGFP<sup>+</sup> populations correlated to a similar extent between technical (0.79 and 0.72) and biological (0.58 and 0.55) replicates (Fig EV1D and E). This suggested that these two populations behaved similarly, despite different TagRFP levels. Therefore, we treated them as technical replicates to find the most robust changes in gRNA abundance following passaging, “hits.”

gRNAs targeting all four positive-control essential genes (*PRPF8*, *PLK1*, *COPA* and *EIF3A*) were strongly depleted in the screen (Fig 1E). Strong depletion of gRNAs targeting *MYBL2* and *CTNNB1* (Fig 1E) was consistent with *MYBL2* being a central factor regulating cell proliferation and the importance of WNT signalling for tip progenitor cell growth (Musa et al, 2017; Hein et al, 2022). gRNAs targeting *SOX9* were moderately depleted suggesting a role in tip progenitor self-renewal, consistent with previous studies (Chang et al, 2013; Rockich et al, 2013; Li et al, 2021). By contrast, depletion of *SOX2* did not markedly influence progenitor self-renewal, consistent with a recent knockout study (Sun et al, 2021). We also obtained intermediate hits, with gRNAs being mildly depleted, including *GATA6*, *SUZ12*, *ARID5B*, *ETV5*, *ZBTB7B*, *E2F1* and *MYRF*. Mild depletion could result from there being a few effective gRNAs buffered by the effects of nonfunctional gRNAs targeting the same gene; alternatively, non-specific effects of a small group of gRNAs that influenced cell viability. Perhaps surprisingly, we discovered that gRNAs targeting *IRF6* were enriched in the screen, indicating a normal function in suppressing self-renewal, consistent with reports of a tumour suppressor role (Botti et al, 2011). These results indicate that the CRISPRi screen was able to effectively identify crucial factors regulating tip progenitor cell self-renewal.

### Validation of CRISPRi hits confirmed screen robustness

To validate the screen results, we cloned individual gRNAs separately into the gRNA vector and tested their effects on progenitor self-renewal (Fig 1F). We selected *MYBL2*, *IRF6* and *ZBTB7B/ARID5B* as representative of strongly depleted, enriched and intermediately depleted genes, respectively. The gRNAs targeting *IRF6*, *MYBL2* and *ZBTB7B* were able to efficiently downregulate the expression of their targeted gene (Fig EV2A). We performed a serial passaging assay to test the effects of target gene knock-down on organoid self-renewal. *MYBL2* knock-down organoids were rapidly

lost after two serial passages in all the different organoid lines tested (6 of 6), whereas *ZBTB7B* knock-down organoids were slowly lost in some of the organoid lines tested (4 of 6, by Passage 5) (Fig 1F–H). These data correlated well with the relative “strength” of hits in the screen. *IRF6* knock-down led to better organoid growth compared with non-targeting (NT) control organoids, consistent with its gRNA enrichment in the screen (Fig 1F–H). We further tested the effects of *IRF6* and *MYBL2* knock-down on organoid proliferation using an EdU incorporation assay. *IRF6* knock-down organoids exhibited a higher proportion of EdU<sup>+</sup> cells compared with NT controls (Fig EV2B and C). Consistent with the serial passaging data, in *MYBL2* knock-down organoids, the percentage of EdU<sup>+</sup> cells was reduced (Fig EV2B and C). We did not observe any significant depletion of *ARID5B* mRNA following knock-down (Fig EV2D), suggesting that the depletion of this gRNA in the screen might be due to off-target effects. Overall, we were able to validate the strong, and some intermediate, hits in our screen confirming that the CRISPRi screening conditions were robust enough to discover TFs that regulate tip progenitor cell self-renewal.

### SOX9 promotes proliferation and suppresses differentiation to govern progenitor self-renewal

*SOX9* is an established lung epithelial tip progenitor marker. Moreover, *SOX9* knockouts in the developing mouse lung give phenotypes that are consistent with a progenitor self-renewal defect, but the mechanism underlying the observed effects has not been elucidated (Chang et al, 2013; Rockich et al, 2013). In addition, although *SOX9* has a reported phenotype in iPSC-derived human lung cells, the molecular mechanisms underlying these effects are not clear (Li et al, 2021). We therefore used our human foetal lung progenitor organoids, which capture key TF expression patterns (Fig 2A), to explore the detailed mechanisms of *SOX9* function in multipotent lung progenitor cells. We reasoned that SOX proteins elicit diverse functions in distinct biological processes by changing their binding partners (Kamachi & Kondoh, 2013); therefore, the use of the self-renewing organoids would provide a simple and isolated system to understand the cellular and molecular mechanisms of *SOX9* in self-renewal.

We first validated that the gRNAs used in the screen were able to knock-down *SOX9* effectively (Fig 2B and C). *SOX9* knock-down organoid cells were gradually lost in a serial passaging assay in all the organoid lines tested (6 of 6) (Fig 2D and E), confirming that *SOX9* is an important regulator of tip progenitor cell self-renewal.

We performed RNA-seq on *SOX9* knock-down organoids to characterise downstream targets. To account for biological variation between organoids from different donors and identify the most robust downstream targets we used the following: (i) two different gRNAs targeting *SOX9* to circumvent potential gRNA-dependent non-specific effects; (ii) two different NT control gRNAs to eliminate lentiviral transduction-dependent non-specific effects; (iii) two independent organoid lines to avoid possible organoid line non-specific effects. *SOX2* knock-down organoids were included for comparison. Organoids were harvested after 5-day Dox/TMP treatment to probe the early effects of *SOX9* knock-down (Fig 2F).

Unsupervised hierarchical clustering of the RNA-seq transcriptome data revealed that the two independent organoid lines clustered separately (Fig EV3A), indicating that there was an organoid

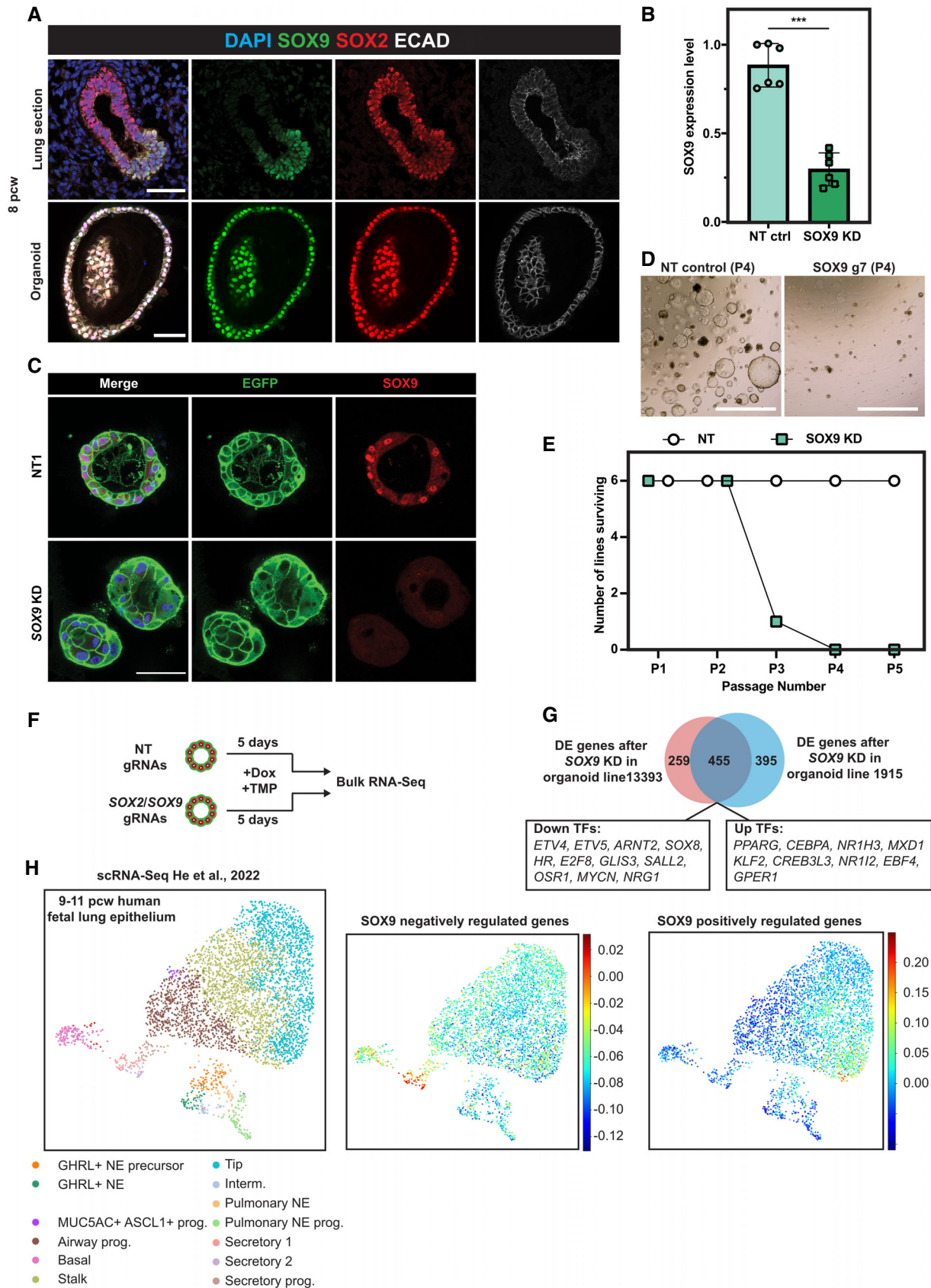


Figure 2.

**Figure 2. SOX9 regulates human foetal lung progenitor cell self-renewal.**

- A Human foetal lung tip organoids faithfully express *in vivo* tip progenitor markers, SOX2 and SOX9. Upper panel: SOX2/SOX9 dual expression in human foetal lungs. Lower panel: SOX2/SOX9 in human foetal lung tip organoids. SOX9 green, SOX2 red, E-Cadherin white.
- B qRT-PCR showing that SOX9 gRNAs effectively knocked-down SOX9 transcript levels using inducible CRISPRi after 5 day of Dox and TMP treatment. Three different organoid lines and two different SOX9 gRNAs were used. Error bars: mean  $\pm$  SEM. Two-sided Student's *t*-test with equal variance \*\*\**P* < 0.001.
- C SOX9 was knocked down at the protein level using the inducible CRISPRi system after 4 day of Dox/TMP treatment.
- D SOX9 knock-down organoids at Passage #4 (P4).
- E Summary of the serial passaging assay results for SOX9 knock-downs. Three independent organoid lines each were transduced with two different gRNAs against SOX9, making six different organoid lines altogether. For serial passaging assay, organoids were maintained in Dox and TMP and broken into pieces every 3–4 day.
- F Schematic of RNA-seq to identify SOX9 downstream targets. Two independent inducible CRISPRi parental organoid lines were transduced with 2 different non-targeting control gRNAs, two different SOX9 gRNAs and two different SOX2 gRNAs, respectively. Organoids were supplemented with Dox/TMP for 5 day before harvesting for RNA-seq.
- G Venn Diagram showing the overlapping number of differentially expressed (DE) genes in SOX9 knock-down organoids from different parental lines.
- H All SOX9 positively and negatively regulated genes were used to score against an scRNA-Seq dataset from 9 to 11 pcw human foetal lung epithelium (left panel, preprint: He *et al.*, 2022). SOX9 negatively regulated genes were primarily enriched in secretory lineage populations (middle panel). SOX9 positively regulated genes were primarily enriched in tip progenitor cells (right panel).

Data information: Scale bars denote 50  $\mu$ m (A, C) and 100  $\mu$ m (D).

Source data are available online for this figure.

line-dependent effect. However, within each cluster, NT controls and SOX2 knock-down organoids clustered separately from SOX9 knock-down organoids, suggesting that SOX9 knock-down led to unique gene expression profiles (Fig EV3A). To obtain the most robust differentially expressed (DE) genes, we first identified DE genes between the SOX9, or SOX2, knock-down groups and NT controls of the same organoid line using a 2-fold change in gene expression and an adjusted *P*-value  $\leq$  0.05 as cut-offs. We then overlapped the DE gene lists between biological replicates.

For SOX2 knock-down, this strategy identified 54 genes in organoid line 1915 and 133 genes in organoid line 13393 with an overlap of only 20 genes (including SOX2) (Fig EV3B; Dataset EV3), supporting our previous conclusion that SOX2 is dispensable for progenitor cell self-renewal (Sun *et al.*, 2021). By contrast, 850 genes (organoid line 1915) and 714 genes (organoid line 13393) were differentially expressed after SOX9 knock-down, with an overlap of 455 genes, including 20 TFs (Fig 2G; Dataset EV3). For SOX9, > 50% of the DE genes were shared between biological replicates (53.5% for line 1915 and 63.7% for line 13393) (Fig 2G), indicating that the experimental design was able to remove most non-specific effects. To confirm that the DE gene list was robust, we repeated the SOX9 knock-down in a further two biologically independent organoid lines and confirmed the gene expression changes of a small number of these DE genes (Fig EV3C).

SOX9 itself was not in the SOX9 knock-down DE gene list (Fig 2G), even though we had previously validated both mRNA and protein depletion (Fig 2B–C). We hypothesised that an alternative splicing event might be enhanced by CRISPRi-induced knock-down, buffering overall SOX9 locus transcription. We therefore used sashimi plots to visualise the splice junctions (Fig EV3D). This showed that there was an alternative transcriptional start site(s) (TSS) within SOX9 intron #1 and that hybrid reads of intron #1 and exon #2 emerged after SOX9 knock-down. However, the “new” SOX9 transcript was unlikely to be functional as it lacked the dimerization domain and part of the HMG domain encoded in SOX9 exon #1 (Fig EV3D). Additionally, following knock-down, we were unable to detect SOX9 using an antibody against the C-terminus of the protein (Fig 2C).

To test whether the SOX9 knock-down cells altered their differentiation status, we took advantage of our human foetal lung scRNA-

seq dataset (preprint: He *et al.*, 2022). We subset the human foetal lung scRNA-seq data from 9 to 11 postconception weeks (pcw) and used all SOX9 positively and negatively regulated genes to score the epithelial compartment (Fig 2H). SOX9 negatively regulated genes were primarily expressed in secretory cells and their progenitors, indicating that SOX9 suppresses premature differentiation (Fig 2H, middle panel). By contrast, SOX9 positively regulated genes were primarily enriched in the tip progenitor cells, confirming that SOX9 functions to drive tip progenitor cell gene expression programmes (Fig 2H, right panel).

Gene ontology (GO) revealed that genes involved in cell metabolic processes were upregulated after SOX9 knock-down (Fig EV3E and F; Dataset EV4). Additionally, other foregut lineage markers, including from liver (*APOL1* and *ALB*) and stomach (*GKN1*, *GKN2* and *TFF1*), were upregulated (Fig EV3E). Cell division GO terms were enriched in the downregulated genes (Fig EV3F; Dataset EV5), consistent with the observation that SOX9 knock-down organoids were gradually lost in the serial passaging assay (Fig 2D and E). Overall, our results showed that SOX9 acts as a true self-renewal factor in human lung tip progenitors by: (i) promoting tip cell proliferation; (ii) inhibiting differentiation by suppressing secretory cell lineage-related metabolic genes and non-lung lineage genes.

### Targeted DamID (TaDa) identified SOX9 direct transcriptional targets

To identify genes directly activated or repressed by SOX9, we used SOX9 Targeted DamID (TaDa) to probe genomic occupancy (Southall *et al.*, 2013; Marshall & Brand, 2015; Marshall *et al.*, 2016; Cheetham *et al.*, 2018). We introduced the TaDa system into organoids via lentivirus and harvested cells 48–72 h after transduction (Fig 3A). 4845 SOX9 binding peaks were called with high confidence (FDR < 10<sup>-50</sup>) versus Dam-only controls (no SOX9 fusion) and shared by four independent organoid lines (Dataset EV6). *De novo* motif analysis revealed the enrichment of a SOX motif (Fig EV4A), suggesting that the SOX9-Dam fusion protein faithfully bound to SOX9 targets. We overlapped the SOX9 knock-down DE gene list with peak annotations (<http://great.stanford.edu/public/html/>, GREAT analysis) and identified 171 genes directly regulated by SOX9 (Fig 3B; Dataset EV3). SOX9 positively regulated genes

were enriched in tip progenitor cells and negatively regulated genes enriched in secretory cell lineages (Fig EV4B). Direct transcriptional targets included *ETV4*, *ETV5*, *MYCN*, *LGR5*, *ROR1*, *CD44*, *CXCR4* and *SHH*, many of which have been previously reported to be important for lung development in mouse (Fig 3C) (Weaver et al, 2003; Okubo et al, 2005; Herriges et al, 2015; Hein et al, 2022). *SHH* expression in human tip progenitor cells was confirmed by *in situ* HCR (hybridization chain reaction) (Fig EV4C).

Human lung bud tip progenitors are dependent on WNT activation for their *in vitro* growth (Nikolić et al, 2017; Miller et al, 2018). Confirming this, *CTNNB1* encoding  $\beta$ -catenin, an intracellular signal transducer of the WNT signalling pathway, was a strong hit in our screen (Fig 1E). We confirmed that CD44 protein (Fig 3D) and *LGR5* mRNA (Fig 3E) localised in *SOX9*-expressing tip regions, consistent with these genes being direct *SOX9*-targets and with previous reports of *LGR5* expression (Ostrin et al, 2018; Hein et al, 2022). *LGR5* and *CD44* are WNT signalling amplifiers (Schuijers & Clevers, 2012; Schmitt et al, 2015), suggesting that *SOX9* could enhance WNT signalling in tip progenitors. We also observed that known WNT targets and feedback inhibitors including, *NOTUM* (Gerhardt et al, 2018), *LEF1* (Gerner-Mauro et al, 2020) and *WIF1* (Hsieh et al, 1999) are enriched in human lung bud tip progenitors (Figs 3F and EV4D) confirming that human lung bud tips are highly WNT responsive. This prompted us to investigate whether WNT signalling influenced *SOX9* expression. We removed WNT signalling activators (R-spondin1 and CHIR99021) from tip progenitor organoid culture for 6 days, leading to loss of *SOX9* transcript and protein (Fig 3H and I). We further showed that the regulation is via  $\beta$ -catenin, canonical WNT signalling, by overexpressing a constitutively activated  $\beta$ -catenin (DeltaN90- $\beta$ -catenin) (Guo et al, 2012) in the absence of WNT signalling activators (Fig 3G), rescuing *SOX9* expression (Fig 3H and I). Therefore, *SOX9* is regulated by canonical WNT signalling and itself directly regulates *LGR5* and *CD44*, which are likely to further enhance WNT signalling. This is consistent with a recent report showing that WNT signalling is amplified by *RSPO2-LGR5* in the distal lung region and is required for human lung bud tip maintenance and *SOX9* expression (Hein et al, 2022).

We used *SOX9* overexpression in tip progenitor organoids to test some of the predicted direct transcriptional targets (Fig EV4E–G). *ETV5* and *MYCN* were significantly upregulated upon *SOX9* overexpression, further supporting the direct regulation (Fig EV4G).

However, *ETV4* and *CFTR* remained unchanged, likely due to already saturated binding at these loci (Fig EV4G). These results marked the first application of TaDa in organoids to identify TF binding targets.

### SOX9 and ETVs coordinate the tip progenitor self-renewal programme

We were intrigued to discover that *ETV4* and *ETV5* are *SOX9* direct binding targets. We showed that *ETV5* and *ETV4* are enriched in *SOX9* expressing tip progenitor cells *in vivo* (Fig 4A and B). *ETV4* and *ETV5* are redundant in mouse lung development (Herriges et al, 2015). This is consistent with our screen results in which *ETV5* was an intermediate hit and *ETV4* gRNAs had no effect (Fig 1E). To test whether *ETV4* and *ETV5* function with *SOX9* in human foetal lung progenitor self-renewal, we knocked down *ETV4* and *ETV5* simultaneously using inducible CRISPRi (Fig 4C). *ETV4*; *ETV5* double knock-down organoids were gradually lost during serial passaging, similar to *SOX9* knock-down (Fig 4D).

ETVs are RTK signalling effectors (Zhang et al, 2009; Herriges et al, 2015) and RTK ligands are required for long-term tip organoid self-renewal (Nikolić et al, 2017). We reasoned that *SOX9* influences RTK signalling, thereby influencing progenitor self-renewal. Therefore, we tested the effects of removing RTK ligands (EGF, FGF10 and FGF7) from our self-renewal medium; both *ETV4* and *ETV5* were down-regulated and organoids could not proliferate normally (Fig 4E and F). *SOX9* transcription was not affected by 6 days of RTK ligand removal, suggesting its transcription is not directly controlled by RTK signalling (Fig 4F), even when high levels of FGF10 were supplied in combination with a reduction in WNT activation (Fig EV5A). These results show that *SOX9* can directly activate *ETV4* and *ETV5* expression, enhancing RTK signalling.

To identify *ETV4* and *ETV5* binding targets, we performed TaDa. *ETV4* and *ETV5* TaDa exhibited > 90% similarity (Fig EV5B), and we primarily used the *ETV5* data for analysis. Motif analysis on *ETV5* bound regions identified the ETS binding motif, suggesting *ETV5* TaDa recapitulated *ETV5* binding events (Fig EV5C). The *SOX* motif was also mildly enriched in *ETV5* binding regions. We explored the possibility of *SOX9* and *ETV5* coregulation of targets. Both *SOX9* and *ETV5* primarily bind to intronic regions (Fig EV5D), consistent with previous results (Shih et al, 2015). *SOX9* and *ETV5*

#### Figure 3. Targeted DamID (TaDa) identified *SOX9* directly regulated targets.

- A Schematic of *SOX9* TaDa lentiviral construct design. *SOX9* is fused with *E. coli* DNA adenine methylase (Dam). The fusion protein binds to *SOX9* binding targets and methylates adenine in the sequence *GATC*. Methylated *GATC* is specifically recognised and cleaved by DpnI restriction enzyme. TaDa is designed to produce an extremely low level of Dam-*SOX9* fusion protein: an mNeonGreen open reading frame (ORF1) was placed in front of *Dam-SOX9* fusion (ORF2). The two ORFs were separated by two stop codons and a frame-shift C (represented by 2 black diamonds), such that the Dam-*SOX9* fusion protein is translated at very low levels after rare translational re-initiation events.
- B Venn Diagram showing the overlap between DE genes identified in the *SOX9* knock-down RNA-seq experiment and genes annotated from *SOX9* TaDa peaks.
- C Heatmap showing expression level of all 171 *SOX9* directly regulated genes across nontargeting control and *SOX9* knock-down organoid lines.
- D CD44 protein expression in *SOX9*<sup>+</sup> tip progenitor cells. *SOX9* green, *SOX2* red, CD44 white.
- E *LGR5* mRNA expression enrichment in *SOX9* expressing tip progenitor cells. *SOX9* red, *LGR5* cyan.
- F Tip progenitor cells are of high WNT signalling activity. *NOTUM* yellow, *SOX9* red.
- G Design of constitutively activated  $\beta$ -catenin overexpression lentiviral construct.
- H qRT-PCR showing rescue of *SOX9* transcription after constitutively activated  $\beta$ -catenin overexpression in organoids cultured without WNT activators. *N* = 3 different organoid lines. Error bars: mean  $\pm$  SEM.
- I WB showing *SOX9* protein was rescued after constitutively activated  $\beta$ -catenin overexpression in organoids cultured without WNT activators.

Data information: Scale bars = 50  $\mu$ m in all panels.

Source data are available online for this figure.



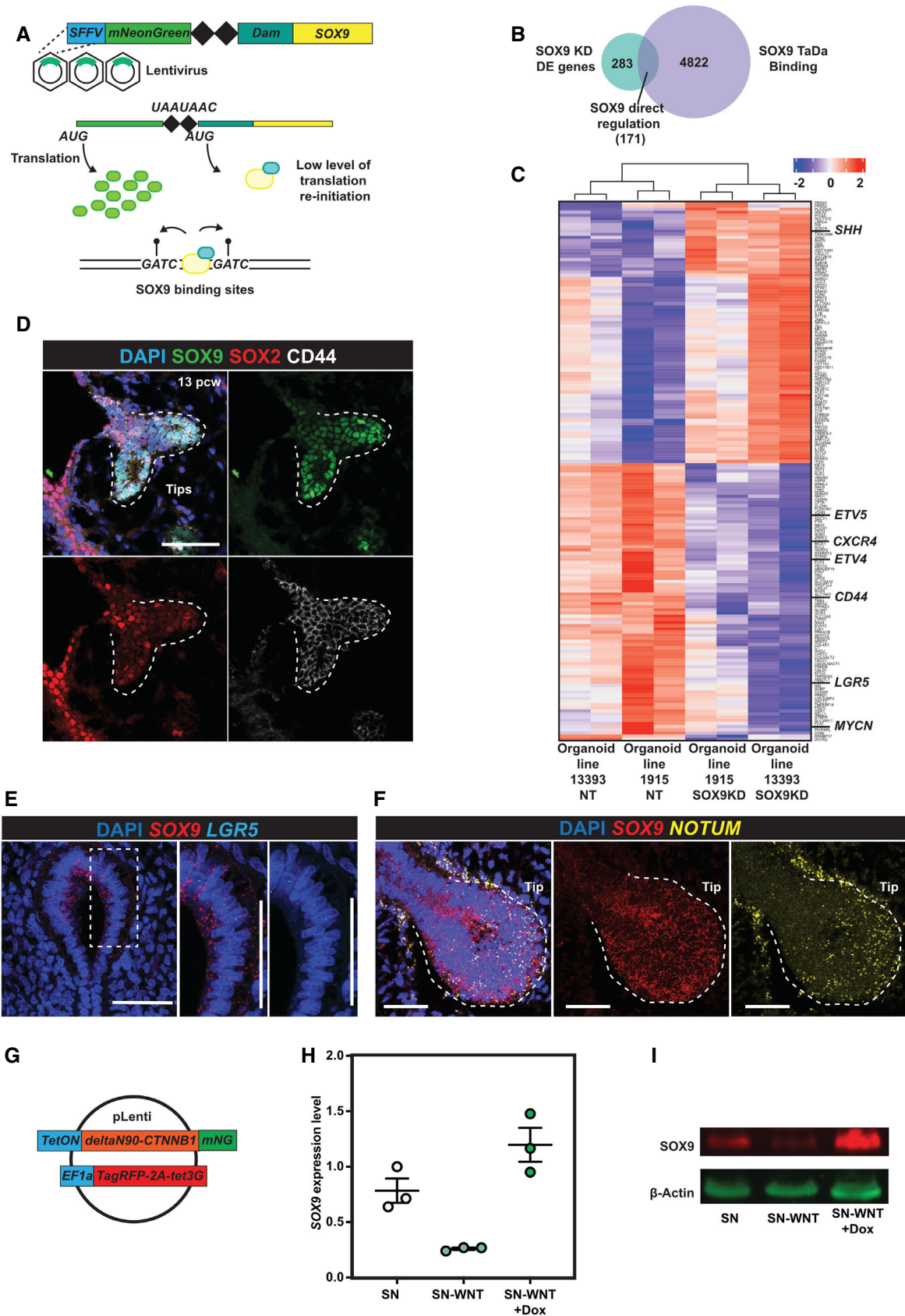


Figure 3.

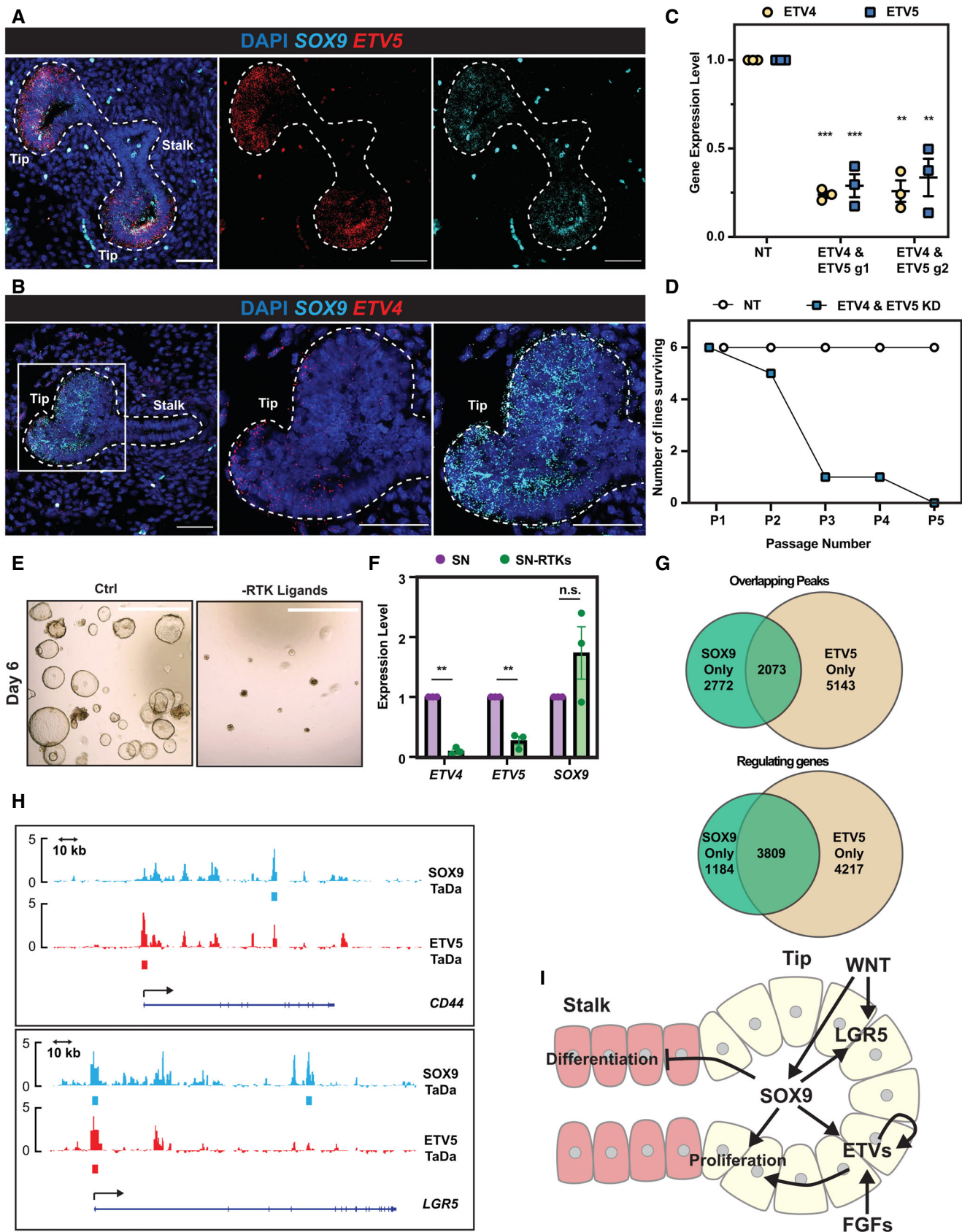


Figure 4.

**Figure 4. SOX9 directly regulates ETV4 and ETV5 expression, thereby enhancing FGF signalling.**

- A, B HCR images showing *ETV5* (A) and *ETV4* (B) expression in *SOX9* expressing tip progenitors. *ETV4/5* red, *SOX9* cyan.
- C qRT-PCR showing *ETV4* and *ETV5* dual knock-down in tip organoids.  $N = 3$  different organoid lines and 2 different *ETV4* and *ETV5* gRNA combinations were used. Error bars: mean  $\pm$  SEM. Two-tailed paired  $t$ -test: \*\* $P < 0.01$ ; \*\*\* $P < 0.001$ .
- D Summary of the serial passaging assay results for *ETV4*; *ETV5* dual knock-downs. Three independent organoid lines each were transduced with 2 different *ETV4*; *ETV5* gRNA combinations, making 6 different organoid lines altogether. Organoid cells were given 8 days to recover after plating and grown into small colonies before treating with Dox and TMP. Organoids were then maintained in Dox and TMP and serially passaged by breaking into pieces every 3–4 day.
- E Representative images of organoids grown in self-renewing medium (left) and self-renewing medium without RTK ligands (EGF, FGF7 and FGF10) (right).
- F qRT-PCR of *ETV4*, *ETV5* and *SOX9* expression level in organoids in self-renewing medium and self-renewing medium without RTK ligands.  $N = 3$  different organoid lines used. Error bars: mean  $\pm$  SEM. Two-tailed paired  $T$ -test: \*\* $P < 0.01$ ; n.s. nonsignificant.
- G Venn diagrams showing overlap of *SOX9*-*ETV5* TaDa peak regions (upper) and overlapping genes from TaDa peak annotations (lower).
- H Examples of *SOX9* and *ETV5* genomic occupancies showing co-regulation. At the *CD44* locus (upper), *SOX9* binds to an intron, whereas *ETV5* primarily occupied the promoter. By contrast, for the *LGR5* gene (lower), *SOX9* and *ETV5* both showed occupancy at the promoter.
- I Schematic model of *SOX9* regulation of tip progenitor cell self-renewal.

Data information: Scale bars denote 50  $\mu$ m (A, B) and 100  $\mu$ m (E).

Source data are available online for this figure.

binding peaks overlapped  $< 50\%$  (*SOX9*: 42.8%; *ETV5*: 28.7%). However, peak annotation by GREAT analysis revealed a much greater overlap (*SOX9*: 76.3%; *ETV5*: 47.5%) (Fig 4G), suggesting *SOX9* and *ETV5* bind to different regions of the same loci to coordinate the tip progenitor self-renewal programme (Fig 4H).

To identify gene expression changes following *ETV4*; *ETV5* double knock-down, we performed RNA-seq. Using a less-stringent cut-off (1.5-fold change and  $FDR \leq 0.05$ ), *ETV4*; *ETV5* double knock-down resulted in many fewer gene expression changes when compared with *SOX9* knock-down (Fig EV5E, compare with Fig 2G). Only 42 differentially expressed genes were identified that were common to both *ETV4*; *ETV5* double knock-down organoid lines and both sets of gRNAs; these were predominantly related to cell proliferation (Fig EV5E and F; Dataset EV7). Of the 42 differentially expressed genes, 26 were bound by *ETV5* in the TaDa assay (Fig EV5F; Dataset EV7) suggesting direct regulation. Only six of these were also *SOX9* direct regulated targets (*CENPE*, *ETV4*, *ETV5*, *RGS5*, *SHISA2* and *TNS4*). Taken together, the *ETV5* TaDa binding data and *ETV4*; *ETV5* double knock-down DE genes show that *ETV4* and *ETV5* are binding widely throughout the genome of lung bud tip progenitors, but on their own are only activating or repressing transcription to a detectable level at a small number of loci (mostly concerned with cell proliferation). This is analogous to other studies where *ETV5* binding has been compared with transcriptional changes following its depletion (Zhang et al, 2017; Kalkan et al, 2019) and suggests that it mostly works cooperatively with other TFs, such as *SOX9*, at the majority of its binding sites.

Our results suggest a model for *SOX9* function in human foetal lung progenitors (Fig 4I), in which it promotes self-renewal by: (i) promoting progenitor cell proliferation, via a feed-forward WNT signalling loop and by enhancing RTK signalling via ETV factors; (ii) suppressing metabolic processes favourable for precocious differentiation in early lung development; (iii) suppressing other non-lung lineage gene expression to maintain human foetal lung progenitor states.

## Discussion

CRISPR-related screens have rarely been applied to organoids because of the difficulties in manipulating 3D culture systems. We have performed the first pooled CRISPRi dropout screen in a tissue-

derived organoid system, followed by detailed characterisation of selected gene function. Previous reports challenged the robustness of CRISPR screens in organoid systems (Ringel et al, 2020), or used an enormous cell number (10,000 cells per guide) (Planas-Paz et al, 2019). Here, we achieved a pooled CRISPRi screen of high robustness and sensitivity with a starting population of  $\sim 500$  cells per gRNA (Figs 1 and EV1 and EV2). Our  $\sim 500$  cell representation per gRNA is similar to screens carried out in cancer cell lines (Joung et al, 2017; Bowden et al, 2020). We envision that similar screens can be practically and affordably scaled-up for targeting hundreds of genes, for example the mammalian TFome (Ng et al, 2021). Moreover, the future use of functional genomics, including CRISPR and compound library screening, for modifiers of respiratory disease-relevant phenotypes in human organoid models will be a powerful clinical research tool. Such screens could be performed in pooled or arrayed format. They could assay cell survival/proliferation as in this work, or specific phenotypes such as protein expression or localisation, or be combined with Perturb-seq (Dixit et al, 2016; Datlinger et al, 2017) to directly assay cell states.

There is great potential for clinical research based on respiratory organoid functional genomics. However, it is important to be aware of the limitations of such screens. We chose to use CRISPRi to modulate gene expression because we had a tightly inducible system (Sun et al, 2021), human CRISPRi gRNA libraries were available (Horlbeck et al, 2016), and we find that gene expression is very homogenous within a population of knocked-down cells (Fig 1C). No genetic manipulation system is perfect, and even within this small-scale screen, we found genes that we could not knock down (*ARID5B*), had cryptic transcriptional start sites following knock-down (*SOX9*), or were highly redundant (*ETV4* and *ETV5*). It is likely that similar limitations would have been encountered with any CRISPR system. It is therefore important to be aware that any screen will have false-positives and negatives and require detailed mechanistic follow-up. Similarly, human organoid systems are proving to be important models of disease, but they are reductionist models and effective selection of disease-relevant phenotypes will be crucial for their future impact in clinical research. Finally, we found that within the screen, there was variability between organoid lines (Fig EV1E;  $r = 0.55, 0.58$ ), introducing additional complexity compared with screens performed on mouse cells or immortalised cell lines. However, this genetic background variability could also be viewed as introducing the potential to couple functional

genomics with human genetics for the development of future precision medicine therapies.

During this study, we performed RNA-seq on primary human tissue-derived organoids following knock-down of *SOX2*, *SOX9* and *ETV4/5*. Each time we observed a significant level of transcriptome-level variability between biological replicates, even though the cellular level phenotypes observed were robust across multiple organoid lines. This transcriptome-level variability is a further challenge of working with primary human samples that is rarely discussed. In our NGS experiments, we chose to perform controls for lentiviral infection (2 non-targeting gRNAs per experiment), gRNA effectiveness (2 targeting gRNAs per experiment) and biological variation (2 independent biological replicates per experiment) and to focus on differentially expressed genes that were identified between all conditions; a pragmatic approach between affordability and replication. However, it is possible that this strategy will under-represent transcriptional changes when the fold-changes are low, as potentially observed in the *ETV4/5* double knock-down.

Our study is the first to use TaDa in human organoids (Figs 3 and 4). TaDa is independent of ChIP-grade antibodies and requires a relatively low cell number (400 K cells for TaDa in this study, typically > 1 million cells for ChIP-Seq) (Southall *et al*, 2013; Cheetham *et al*, 2018; Tosti *et al*, 2018). We discovered *ETV4* and *ETV5* (Fig 3C), among others, as *SOX9* directly regulated targets. Interestingly, such regulation was not discovered in *SOX9* knockout mouse lungs. This could be due to gene expression changes being masked by non-*SOX9* expressing cells in the previous mouse study (Chang *et al*, 2013), or species-specific roles. We demonstrate that *SOX9* promotes FGF signalling by activating *ETV4/5* transcription (Fig 3). However, in the short-term culture experiments we have performed, FGF ligands (Fig 4F) and *ETV4/5* DNA binding (Fig EV5) are not required to activate *SOX9* transcription, placing *SOX9* “higher” in the self-renewal network. This is consistent with a mouse study of *ETV4/5* knockout, which did not lead to *SOX9* expression pattern changes (Herriges *et al*, 2015). Additionally, in support of an upstream role for *SOX9*, our analysis of gene expression changes following knock-down shows that *SOX9* both promotes proliferation and represses differentiation, whereas *ETV4/5* promote proliferation only.

It is of great interest that *ETV4/5* bind widely in the genome and are predicted to coregulate many genes with *SOX9* (Fig 4G). Moreover, binding site analysis of both the *SOX9* and the *ETV4/5* TaDa data identified motifs for other TFs that are known to be expressed in the tip progenitors (Figs EV4A and EV5A), including FOXA, GATA and HNF1 families. These data suggest that a highly redundant network of TFs may regulate the tip progenitor self-renewal gene regulation network (GRN) and that future combinatorial manipulation of TF expression, combined with binding site analysis, will be required to determine their effects.

We have shown that WNT signalling is highly active in tip progenitor cells, that *SOX9* directly regulates WNT pathway activators and that *SOX9* expression is controlled by canonical WNT signalling (Fig 3C–I). These findings were consistent with previous mouse research showing that  $\beta$ -catenin knockout led to *SOX9* loss in tip progenitors (Ostrin *et al*, 2018) and also with the finding that blocking the LGR5-WNT signalling axis in human foetal lung explants reduced the number of *SOX9*-positive tip cells (Hein *et al*, 2022). Depletion of *SOX9* also results in an increased expression of

gastrointestinal tract markers, some of which are direct *SOX9* binding targets (*APOL1*, *TFF1*; Fig 3C). In mouse studies, both a reduction (Ostrin *et al*, 2018) and an increase (Okubo *et al*, 2005) in WNT signalling have been associated with the acquisition of gastrointestinal transcriptional phenotypes in the developing lung. However, our lung organoids were grown in the presence of the strong WNT activator, CHIR99021, making it difficult to determine whether WNT is also contributing to gastrointestinal gene expression in our experiments.

We have made the first effort to systematically identify transcription factors with roles in human lung development. These approaches and results will deepen our understanding of human lung development and disease, and greatly benefit future functional organoid-based studies of the coding and non-coding genome.

## Materials and Methods

### Human embryonic and foetal lung tissue

The sources of human foetal lung tissues were the MRC/Wellcome Trust Human Developmental Biology Resource (www.hdbr.org; London site REC reference: 18/LO/0822; Newcastle site REC reference: 18/NE/0290; Project 200454) and Cambridge University Hospitals NHS Foundation Trust under NHS Research Ethical Committee permission (96/085). None of the samples used for the current study had any known genetic abnormalities.

### Derivation and maintenance of human foetal lung organoid culture

Human foetal lung organoids were derived and maintained as previously reported (Nikolić *et al*, 2017). Briefly, human foetal lung tissues were dissociated with Dispase (8 U/ml Thermo Fisher Scientific, 17105041) at room temperature (RT) for 2 min. Mesenchyme was carefully removed by needles. Branching epithelial tips were micro-dissected, transferred into 50  $\mu$ l of Matrigel (356231, Corning) and seeded in 24-well low-attachment plate wells (M9312-100EA, Greiner). The plate was incubated at 37°C for 5 min to solidify the Matrigel. 600  $\mu$ l of self-renewing medium containing: N2 (1: 100, ThermoFisher Scientific, 17502-048), B27 (1: 50, ThermoFisher Scientific, 12587-010), N-acetylcysteine (1.25 mM, Merck, A9165), EGF (50 ng/ml, PeproTech, AF-100-15), FGF10 (100 ng/ml, PeproTech, 100–26), FGF7 (100 ng/ml, PeproTech, 100–19), Noggin (100 ng/ml, PeproTech, 120-10C), R-spondin (5% v/v, Stem Cell Institute, University of Cambridge), CHIR99021 (3  $\mu$ M, Stem Cell Institute, University of Cambridge) and SB 431542 (10  $\mu$ M, biotechne, 1614), was added. The plate was incubated under standard tissue culture conditions (37°C, 5% CO<sub>2</sub>). Once formed, organoids were maintained in self-renewing medium and passaged for routine maintenance by mechanically breaking using P200 pipettes every 3–7 days.

### Whole mount immunostaining for human foetal lung organoids

Organoids were fixed with 4% paraformaldehyde (PFA) in the culture plates on ice for 30 min. After two PBS washes, 0.5% (w/v) bovine serum albumin (BSA), 0.2% Triton-X in PBS (washing

solution) was added and left on ice overnight to dissolve Matrigel. Organoids were then transferred into multiple CellCarrier-96 Ultra Microplates (PerkinElmer, 6055300) for staining. Blocking was performed in washing solution with 5% donkey serum (Stratech, 017–000-121-JIR), 0.5% (w/v) bovine serum albumin (BSA) (blocking solution) at 4°C overnight. For primary antibody staining, the following antibodies in blocking solution were used at 4°C for 24–48 h: SOX2 (1: 500, Bio-technie, AF2018), SOX9 (1: 500, Sigma, AB5535), E-cadherin (1: 1,500, Thermo Fisher Scientific, 13-1900), GFP (1: 500, AbCam, ab13970). After washing off the primary antibodies, the following secondary antibodies in washing buffer were used at 4°C overnight: donkey anti-chick Alexa 488 (1: 2,000, Jackson Immune, 703-545-155), donkey anti-rabbit Alexa 488 (1: 2,000, Thermo Fisher Scientific, A21206), donkey anti-rabbit Alexa 594 (1: 2,000, Thermo Fisher Scientific, A-21207), donkey anti-goat Alexa 594 (1: 2,000, Thermo Fisher Scientific, A-11058), donkey anti-rat Alexa 647 (1: 2,000, Jackson Immune, 712-605-153). The following day, DAPI (Sigma, D9542) staining was performed in washing solution at 4°C for 30 min. After two washes with PBS, 97% (v/v) 2'-2'-thio-diethanol (TDE, Sigma, 166782) in PBS was used for mounting. Confocal z stacks were acquired using Leica SP8 at an optical resolution of 1,024 × 1,024 using a 40× lens. Images were processed using ImageJ (version 2.0.0).

### Immunofluorescence for human foetal lung sections

Human foetal lung sections were rinsed PBS twice and were permeabilized with 0.3% Triton-X in PBS for 10 min. After three PBS washes were carried out, 5% donkey serum (Stratech, 017–000-121-JIR), 0.5% (w/v) bovine serum albumin (BSA), 0.1% Triton-X in PBS (blocking solution) was used for blocking at RT for 1 h, or at 4°C overnight. Primary antibodies, including SOX2 (1: 500, Bio-technie, AF2018), SOX9 (1: 500, Sigma, AB5535), E-cadherin (1: 1,500, Thermo Fisher Scientific, 13-1900) and CD44 (1:100, Thermo Fisher Scientific, 14-0441-82), in blocking solution were used at 4°C overnight. After washing off the primaries, the secondary antibodies in 0.1% Triton-X in PBS were used at 4°C overnight. The following day, DAPI (Sigma, D9542) staining was performed in 0.1% Triton-X in PBS at RT for 20 min. After three washes in PBS, Fluoromount™ Aqueous Mounting Medium (Sigma, F4680) was used for mounting. Samples were not blinded prior to imaging or analysis. Confocal z stacks or single planes were acquired using Leica SP8 at an optical resolution of 1,024 × 1,024 at 40x. Single plane images are shown. Images were processed using ImageJ (version 2.0.0).

### Lentiviral production

HEK293T cells were grown in 10-cm dishes to 80% confluency before transfection with the lentiviral vector (10 µg) with packaging vectors including pMD2.G (3 µg, Addgene plasmid # 12259), psPAX2 (6 µg, Addgene plasmid # 12260) and pAdVantage (3 µg, E1711, Promega) using Lipofectamine 2000 Transfection Reagent (11668019, Thermo Fisher Scientific) according to the manufacturer's protocol. After 16 h, medium was refreshed. Supernatant containing lentivirus was harvested at 24 and 48 h after medium refreshing and pooled together. Supernatant was centrifuged at 300 g to remove cell fragments and passed through 0.45 µm filter. Lentivirus containing > 10 kb length insert (inducible CRISPRi) was

concentrated using AVANTI J-301 centrifuge (Beckman Coulter) with JS-24.38 swing rotor at 72,000 g for 2 h at 4°C and pellets were dissolved in 200 µl PBS. Other lentivirus, including individual gRNAs, constructively active β-catenin and SOX9 inducible overexpression, were concentrated using Lenti-X™ Concentrator (631232, Takara) and pellets were dissolved in 400 µl PBS.

### gRNA library cloning

gRNA plasmid (Addgene #167936) was linearized with BbsI-HF restriction enzyme overnight at 37°C. Linearized plasmid was gel purified with QIAquick® Gel Extraction Kit (28704, Qiagen).

The top 5 gRNA sequences for each targeted gene and #0-#32 non-targeting control gRNA sequences were selected from (Horlbeck *et al*, 2016). The gRNA library sequences are listed in Dataset EV1. Twenty-five nucleotide homology sequences flanking the BbsI cleavage sites of the gRNA plasmid were added at 5' and 3' ends of the gRNA sequences for cloning. Oligos were purchased as oPools™ Oligo Pools from IDT at 10 pmol per oligo scale.

A 1.0 pmol of oligo pool and 0.005 pmol linearized plasmid were mixed with NEBuilder® HiFi DNA Assembly Master Mix (E2621, New England BioLabs) according to the manufacturer's instructions. The mixture was incubated at 50°C for 1 h and cooled down on ice. Three transformation reactions were performed with 2 µl of the reaction mixture in 50 µl Stellar™ Competent Cells (636763, Takara) each according to the manufacturer's manual. A small fraction of the competent cells was plated to calculate the amount needed for 500X representation per gRNA as seeding in Maxiprep. A total of 10 colonies were randomly picked, miniprep (27104, Qiagen) and sequenced. No repetitive gRNA sequence or backbone sequence were observed. At the same time, the same amount of linearized vector was transformed in the same way for background control (colony number < 5% of the library construction transformation). gRNA library pool plasmid was harvested using EndoFree Plasmid Maxi Kit (12362, Qiagen). gRNA library quality was subsequently checked by next-generation sequencing (NGS). Primer sequences used are listed in Dataset EV8.

### Lentiviral production for CRISPRi gRNA library

The gRNA library packaging was slightly modified from a previous method reported (Tian *et al*, 2019). Two 15-cm dishes with 80–90% confluent HEK293T cells were used for transfection. 10 µg CRISPRi gRNA library plasmid, pMD2.G (2.2 µg, Addgene plasmid # 12259), psPAX2 (4 µg, Addgene plasmid # 12260) and pAdVantage (1.6 µg, E1711, Promega) were diluted into 2 ml Opti-MEM I Reduced Serum Medium (51985034, Thermo Fisher Scientific). 250 µl Lipofectamine 2000 Transfection Reagent (11668027, Thermo Fisher Scientific) was added into 2 ml Opti-MEM and incubated at room temperature for 5 min. The diluted DNA mixture was added to the diluted Lipofectamine solution, inverted several times to mix, and incubated at room temperature for 15 min. The transfection mixture was then distributed dropwise to each 15-cm dish with HEK293T cells and mixed well. The next morning, medium was refreshed with DMEM/F12 with 10% FBS. Two days later, the medium was harvested, spun down and filtered through 0.45 µm filters. Lenti-X™ Concentrator (631231, Takara) was added to the supernatant at 1: 3 (v/v) ratio. After 48 h, lentivirus

was pelleted at 1,500 g for 45 min at 4°C. Lentivirus pellets were resuspended with 20 ml of self-renewing medium with ROCK inhibitor (ROCKi, Y-27632, 10 µM, 688000, Merck), aliquoted and stored in -80°C before use.

### CRISPRi screen

Lentivirus titration was first performed to determine the amount of CRISPRi gRNA lentivirus needed for the screen. BRC1915 and HDBR-13393 inducible CRISPRi parental organoid lines were dissociated with TrypLE (Thermo Fisher Scientific, 12605028) at 37°C for 10–20 min (with pipette trituration every 5 min). Organoid single cells were counted and resuspended to achieve 100 K cells/500 µl of self-renewing medium with ROCKi in each 24-well plates well. A serial gradient of the CRISPRi gRNA library lentivirus was added and incubated at 37°C overnight. The next morning, organoid cells were collected, washed twice with PBS and seeded back to 2x 24-well plates well/condition. Flow cytometry analysis was performed after 3 days to determine the amount of virus needed to reach 10–30% of infection rate per 100 K cells per 500 µl of medium.

BRC1915 and HDBR-13393 inducible CRISPRi parental organoid lines were expanded and dissociated with TrypLE at 37°C for 10–20 min (with pipette trituration every 5 min). 4.2 million and 5 million organoid cells from each parental organoid lines were used for infection respectively. Organoid cells were counted and resuspended at 100 K cells per 500 µl of medium. The infection was performed in a 15-cm dish with the appropriate amount of lentivirus determined by titration. Organoid cells were collected the next morning, washed and seeded back to Matrigel with 50 K cells/50 µl Matrigel dome in six-well plates with 8 Matrigel domes per well. Self-renewing medium with ROCKi was supplemented for 3 days before organoids were dissociated with TrypLE and prepared for cell sorting. The TagRFP<sup>+</sup>EGFP<sup>+</sup> double positive population was harvested. Organoid cells from BRC1915 line were divided into 3 parts, each with 983x cell representation per gRNA. One part was snap frozen for gRNA abundance analysis and the two remaining parts were separated as technical replicates and seeded back into Matrigel with 10 K cells/50 µl Matrigel dome in 6-well plates with 8 Matrigel domes per well. Organoid cells from HDBR-13393 were divided into 2 parts, each with 480x representation per gRNA. One part was snap frozen for gRNA abundance analysis, and the other part was seeded back to Matrigel with 10 K cells/50 µl Matrigel dome in six-well plates with 8 Matrigel domes per well. Organoid cells were cultured in self-renewing medium with ROCKi for 8 days before Dox (Doxycycline hyclate, 2 µg/ml, Merck, D9891) and TMP (Trimethoprim, 10 µM, Merck, 92131) were administered and cultured for 2 weeks further. Organoids were passaged (physically split by breaking into pieces) twice during this time. Organoid cells were then dissociated into single cells and prepared for flow cytometry cell sorting. TagRFP<sup>high</sup>EGFP<sup>+</sup> and TagRFP<sup>low</sup>EGFP<sup>+</sup> cells were sorted, harvested separately and snap frozen for gRNA abundance analysis.

Genomic DNA was isolated with Macherey-Nagel<sup>TM</sup> NucleoSpin<sup>TM</sup> Blood kit (740951.50, Macherey-Nagel) according to the manufacturer's instruction. A 2 µg of genomic DNA for BRC1915 organoid line and 1 µg genomic DNA for HDBR-N 13393 organoid line was used for PCR amplification of gRNA for NGS. NEBNext Ultra II Q5 Master Mix (M0544S, New England BioLabs) and primers

(Dataset EV8) were used for amplification with 29 cycles. PCR products were gel purified with Monarch<sup>®</sup> DNA Gel Extraction Kit (T1020S, New England BioLabs) according to manufacturer's instructions and sent for NGS at the Gurdon Institute NGS core using an Illumina HiSeq 1500.

### CRISPRi screen analysis

Guide abundances were quantified by mapping reads present in sequencing data to the CRISPRi library sequences. The initial nucleotide was omitted from both library sequences and reads, as the initial base of a read is often not certain. Mapped read counts are available in Dataset EV2. MAGeCK (Li et al, 2014) was used to determine significantly enriched or depleted genes. As MAGeCK expects the majority of genes targeted to have no effect, the 33 non-targeting guides were bootstrapped to form 102 synthetic genes by drawing five unique random guides from the non-targeting group. MAGeCK version 0.5.9.3 was run with "--remove-zero both" and "--remove-zero-threshold 1" options. CRISPRi screen results are summarised in Dataset EV9.

### CRISPRi screen hit validation

The two most effective gRNA sequences in the screen for *MYBL2*, *IRF6*, *ARID5B* and *ZBTB7B* were selected (Dataset EV8). These gRNAs were individually cloned into the gRNA plasmids and packaged into lentivirus as described above.

Three independent inducible CRISPRi parental organoid lines were transduced individually with specific gRNAs. TagRFP and EGFP double positive organoid cells were sorted and seeded in Matrigel with 2,000–3,000 cells per 50 µl Matrigel (for gRNAs targeting the same gene, the same number of cells were used from each parental organoid line). Organoid cells were cultured with self-renewing medium plus ROCKi for 8 days before Dox and TMP were administered for 5 days. One-third of the organoids was harvested for mRNA isolation to check for targeted gene knock-down. RNA extraction was performed using RNeasy Mini Kit (74104, Qiagen) with RNase-Free DNase Set (Qiagen) according to the manufacturer's instructions. Reverse transcription was performed using MultiScribe<sup>TM</sup> Reverse Transcriptase system (4311235, Thermo Fisher Scientific) according to the manufacturer's instructions. qRT-PCR primers for each target genes are listed in Dataset EV8. One-third of the organoids was used for EdU incorporation assay with 1-h pulse labelling, fixed and staining with Click-iT<sup>TM</sup> EdU Cell Proliferation Kit for Imaging (C10340, Thermo Fisher Scientific) according to the manufacturer's instructions. The rest of the organoids were passaged at 1 to 3 ratio till Passage #5, or the line was lost.

### SOX2, SOX9 and ETVs double knock-down RNA-Seq

BRC1915 and HDBR-N 13393 inducible CRISPRi parental organoid lines were used for *SOX2* and *SOX9* knock-down experiments. BRC1915 and BRC2174 inducible CRISPRi parental organoid lines were used for *ETV4* and *ETV5* double knock-down. For each parental line, NT gRNAs (#1, #2), *SOX2* gRNAs (#2, #8), *SOX9* gRNAs (#1, #7) and *ETV* gRNAs (#1, #2, both containing gRNAs targeting to *ETV4* and *ETV5* in the same vector) were introduced via lentivirus transduction (gRNA sequences in Dataset EV8). TagRFP

and EGFP double positive cells were sorted, replated and expanded. Organoids were treated with Dox and TMP for 5 days, before harvesting for RNA extraction, which was performed using RNeasy Mini Kit (Qiagen) with RNase-Free DNase Set (Qiagen) according to the manufacturer's instructions.

RNA was quantified by NanoDrop (Thermo Fisher Scientific) and Tape Station (Agilent) with High-Sensitivity RNA Screen Tape (5067-5579, Agilent). Half of the RNA was used for cDNA synthesis and qRT-PCR analysis to validate *SOX2*, *SOX9* and *ETVs* knock-down effect. The other half of the RNA was sent for Eukaryotic RNA-seq library preparation and sequencing (PE150) at Novogene (Cambridge, UK).

### RNA-Seq data analysis

Raw sequencing data were aligned to human genome (hg38) using STAR aligner (v 2.7.1a). Sequencing reads were counted using FeatureCount (v 2.0.0). DESeq2 was used for differential gene expression analysis. Differentially expressed (DE) gene lists were generated using DESeq2 packaged with a cut-off of fold change  $\geq 2$  and  $FDR \leq 0.05$  for *SOX2* KD and *SOX9* KD and a cut-off of fold change  $\geq 1.5$  and  $FDR \leq 0.05$  for *ETVs* KD. *SOX2* KD, *SOX9* KD, *ETVs* KD or NT control with different gRNAs of the same organoid line were first grouped for DE gene analysis. DE genes shared by two independent organoid lines were taken as the most robust DE gene list for downstream analysis. Differentially expressed genes were used for GO analysis with ShinyGO v0.61 (<http://bioinformatics.sdstate.edu/go/>).

### Comparing *SOX9* targets with human foetal lung scRNA-Seq data

Upregulated and downregulated genes in *SOX9* knock-down DE gene list and *SOX9* direct transcriptional target list were used to score epithelial cells from 9 to 11 pcw human foetal lungs (preprint: He *et al.*, 2022), using Scanpy's `tl.score_genes` function.

### *SOX9*, *ETV4* and *ETV5* TaDa

Four organoid lines (HDBR-N 13393, BRC1915, BRC1929 and BRC1938) were used for *SOX9*, *ETV4* and *ETV5* TaDa experiments. For each organoid line,  $4 \times 10^5$  organoid single cells were prepared by the aforementioned method and resuspended in 500  $\mu$ l self-renewing medium with ROCKi in one 24-well plates well. 40  $\mu$ l of *SOX9*, *ETV4*, *ETV5* or Dam-only TaDa lentivirus was added per well and incubated overnight. The next morning, organoid single cells were harvested and washed twice with PBS before being resuspended with 200  $\mu$ l of Matrigel and seeded back to four 24-well plates wells. After 48–72 h, organoids were harvested for genomic DNA isolation.

### DamID-seq

DamID samples were processed as described previously and prepared for Illumina sequencing with an adapted TruSeq protocol (Marshall *et al.*, 2016). All sequencing runs were performed as single end 50 bp reads using an Illumina HiSeq 1500, or single end 100 bp reads using an Illumina NovaSeq 6000 from the Gurdon Institute NGS Core facility.

### DamID-seq data processing

Analysis of the raw fastq files was performed with the damidseq pipeline script (Marshall & Brand, 2015) that maps reads to an indexed bowtie2 genome, bins into GATC-fragments according to GATC-sites and normalises reads against a Dam-only control. For our data, the fastq files were mapped to the GRCh38 genome assembly (hg38). The different patient-derived organoid samples were treated as individual replicates. For each replicate, the signal from the Dam-fusion samples was normalised against its own Dam-only sample with a modified version of the damidseq\_pipeline (RPM normalisation, 300 bp bin size). Binding intensities were quantile normalised across all replicates for the same Dam-fusion and subsequently averaged and inversed ("unlog"). Files were converted to the bigwig file format with bedGraphToBigWig (v4) for visualisation with the Integrative Genomics Viewer (IGV) (v2.4.19).

### Peak calling and analysis

Macs2 (v2.1.2) was used to call broad peaks for every Dam-fusion and Dam-only pair using the bam files generated by the damidseq\_pipeline. Peaks were selected when present in all replicates for a particular experimental condition with a  $FDR < 10^{-50}$ . Overlapping genomic features were identified by uploading the peak coordinates to the GREAT online platform (<http://great.stanford.edu/public/html/>). Motif analysis was performed using HOMER (v 4.11) analysis with `findMotifsGenome.pl` function. Genomic occupancy feature annotation was performed using HOMER (v 4.11) analysis with `annotatePeaks.pl` function. Correlation analysis of different TaDa results was performed using deepTools (v 3.5.0) `multiBigwigSummary` function.

### In situ hybridization chain reaction (in situ HCR)

*In situ* HCR v3.0 was performed according to the manufacturer's procedure (Molecular Instruments). A set of DNA HCR probes were designed according to the protocol (Choi *et al.*, 2018), and the HCR amplifiers with buffers were purchased from Molecular Instruments. Sequence information for the DNA HCR probes for *SOX9*, *ETV4*, *ETV5*, *LGR5* and *NOTUM* mRNA targets are listed in Dataset EV10. In brief, 14  $\mu$ m frozen human tissue sections were rinsed in nuclease-free water and prehybridised for 10 min in 37°C humidified chamber. Each DNA HCR probe was diluted to 2 pmol and incubated with the tissues at 37°C overnight. After a series of washes in probe wash buffer, the tissue slices were incubated with 6 pmol of HCR amplifiers at room temperature overnight for amplification reaction. The HCR amplifier comprised of two hairpins, B1 and B2, labelled with Alexa 546 and 647, respectively, were snap-cooled separately at 3  $\mu$ M before adding to the tissue sections. After removing excess hairpins in 5X SSCT (sodium chloride sodium citrate) buffer, nuclei were stained with DAPI. Samples were not blinded prior to imaging or analysis. Images were collected on a Leica SP8 confocal microscope.

### Western blot

Organoids were harvested and washed twice with Advanced DMEM/F12 and twice with PBS, before organoids were resuspended in 100–200  $\mu$ l of RIPA buffer with protease inhibitor (1x,

Thermo Fisher Scientific, 78440) added. Organoid suspension was incubated for 30 min on ice, with strong vortex every 5 min. Cell pieces and debris were removed by centrifugation at 21,300 g. Supernatant was harvested. Protein concentration was measured by BCA assay (Thermo Fisher Scientific). Equal amount of each protein sample was mixed with Sample Buffer (Bio-rad) and beta-mercaptoethanol (Merck, M6250) according to the manufacturer's protocol. Mixture was heated at 95°C for 5 min and cooled down to room temperature.

Samples were separated on a 4–12% SDS–PAGE and transferred to nitrocellulose membranes. Proteins were detected by incubation with primary antibodies, SOX9 (1: 1,000, Merck, AB5535) and  $\beta$ -Actin (1: 5,000, Merck, A3854) at 4°C overnight and subsequently secondary antibodies, donkey anti-Mouse IRDye 800CW (1: 1,000, AbCam, ab216774) and donkey anti-Rabbit IRDye 680RD (1: 1,000, AbCam, ab216779). Protein bands were visualised using Li-Cor Odyssey system.

### Molecular cloning

Inducible CRISPRi and gRNA plasmids (Addgene: #167935 and #167936, respectively) were previously deposited at Addgene. The TaDa Dam-only plasmid was generated by In-fusion cloning of mNeonGreen and *E.coli* Dam methylase into a linearized plasmid pHR-SFFV-dCas9-BFP-KRAB (a gift from Stanley Qi & Jonathan Weissman, Addgene plasmid # 46911), with MluI and SbfI restriction enzymes. SOX9, ETV4 and ETV5 TaDa plasmids (N-terminal Dam fusion) were generated by In-fusion cloning of the target gene sequence (amplified from cDNA library) into the linearized TaDa Dam-only plasmid with NotI restriction enzyme. The constitutively activated  $\beta$ -catenin overexpression plasmid was generated by In-fusion cloning of deltaN90  $\beta$ -catenin (amplified from cDNA library) and mNeonGreen into the linearized inducible CRISPRi plasmid with XhoI and BamHI restriction enzymes.

### Data availability

SOX9 and SOX2 CRISPRi knock-down RNA-seq data, ETV4/ETV5 CRISPRi double knock-down RNA-seq data and SOX9/ETV4/ETV5 targeted DamID data have been deposited to GEO (GSE189885; <https://www.ncbi.nlm.nih.gov/geo/query/acc.cgi?acc=GSE189885>) and are publicly available. Any additional information required to reanalyse the data reported in this paper is available from the corresponding author upon request.

**Expanded View** for this article is available online.

### Acknowledgements

We acknowledge the Gurdon Institute Imaging Facility, Gurdon Institute NGS core and Pathology Department Flow Cytometry Facility. DS is supported by a Wellcome Trust PhD studentship (109146/Z/15/Z) and the Department of Pathology, University of Cambridge. PH holds a non-stipendiary research fellowship at St Edmund's College, University of Cambridge. KL is supported by the Basic Science Research Program through the National Research Foundation of Korea (NRF) funded by the Ministry of Education (2018R1A6A3A03012122). ELR is supported by the MRC (MR/P009581/1; MR/S035907/1). KBM, JCM and SAT acknowledge funding from the MRC (MR/

S035907/1) and from Wellcome (WT211276/Z/18/Z and Sanger core grant WT206194); Research in the Andrea Brand lab was funded by Wellcome Trust Senior Investigator Award (103792) and the Royal Society Darwin Trust Research Professorship to AHB and Wellcome Trust Postdoctoral Training Fellowship for Clinicians (105839) to JvdA. Research in the Steve Jackson lab is funded by Cancer Research UK Discovery Award DRCPGM\100005, ERC Synergy Grant 855741 (DDREAMM), and Wellcome Investigator Award [206388/Z/17/Z]. We acknowledge core funding to the Gurdon Institute from the Wellcome Trust (203144/Z/16/Z) and CRUK (C6946/A14492).

### Author contributions

**Dawei Sun:** Conceptualization; data curation; formal analysis; investigation; methodology; writing – original draft; writing – review and editing. **Oriol Llorca Batlle:** Software; formal analysis. **Jelle van den Aamele:** Software; formal analysis. **John C Thomas:** Software; formal analysis. **Peng He:** Software; formal analysis. **Kyungtae Lim:** Validation; investigation; methodology. **Walfred Tang:** Software; formal analysis. **Chufan Xu:** Validation; investigation; methodology. **Kerstin B Meyer:** Supervision; funding acquisition; writing – review and editing. **Sarah A Teichmann:** Supervision; funding acquisition. **John C Marioni:** Supervision; funding acquisition. **Stephen P Jackson:** Supervision; funding acquisition; writing – review and editing. **Andrea H Brand:** Supervision; funding acquisition; writing – review and editing. **Emma L Rawlins:** Conceptualization; supervision; funding acquisition; writing – review and editing.

### Disclosure and competing interests statement

Dr Sarah Teichmann is a member of the Scientific Advisory Board for the following companies: Biogen, Foresite Labs, GSK, Qiagen, CRG Barcelona, Jax Labs, Scilife Lab, Allen Institute. She is a consultant for Genentech and Roche. She is co-founder of Transition Bio and a member of the Board.

### References

- Alanis DM, Chang DR, Akiyama H, Krasnow MA, Chen J (2014) Two nested developmental waves demarcate a compartment boundary in the mouse lung. *Nat Commun* 5: 3923
- Botti E, Spallone G, Moretti F, Marinari B, Pinetti V, Galanti S, De Meo PD, De Nicola F, Ganci F, Castrignanò T *et al* (2011) Developmental factor IRF6 exhibits tumor suppressor activity in squamous cell carcinomas. *Proc Natl Acad Sci U S A* 108: 13710–13715
- Bowden AR, Morales-Juarez DA, Sczaniecka-Clift M, Agudo MM, Lukashchuk N, Thomas JC, Jackson SP (2020) Parallel CRISPR-Cas9 screens clarify impacts of p53 on screen performance. *Elife* 9: e55325
- Chang DR, Martinez Alanis D, Miller RK, Ji H, Akiyama H, McCrea PD, Chen J (2013) Lung epithelial branching program antagonizes alveolar differentiation. *Proc Natl Acad Sci U S A* 110: 18042–18051
- Cheatham SW, Gruhn WH, van den Aamele J, Krautz R, Southall TD, Kobayashi T, Surani MA, Brand AH (2018) Targeted DamID reveals differential binding of mammalian pluripotency factors. *Development* 145: dev170209
- Chen Y-W, Huang SX, de Carvalho ALRT, Ho S-H, Islam MN, Volpi S, Notarangelo LD, Ciancanelli M, Casanova J-L, Bhattacharya J *et al* (2017) A three-dimensional model of human lung development and disease from pluripotent stem cells. *Nat Cell Biol* 19: 542–549
- Cho SW, Kim S, Kim JM, Kim J-S (2013) Targeted genome engineering in human cells with the Cas9 RNA-guided endonuclease. *Nat Biotechnol* 31: 230–232



- Choi HMT, Schwarzkopf M, Fornace ME, Acharya A, Artavanis G, Stegmaier J, Cunha A, Pierce NA (2018) Third-generation *in situ* hybridization chain reaction: multiplexed, quantitative, sensitive, versatile, robust. *Development* 145: dev165753
- Cong L, Ran FA, Cox D, Lin S, Barretto R, Habib N, Hsu PD, Wu X, Jiang W, Marraffini LA et al (2013) Multiplex genome engineering using CRISPR/Cas systems. *Science* 339: 819–823
- Danopoulos S, Alonso I, Thornton ME, Grubbs BH, Bellusci S, Warburton D, Alam AI D (2018) Human lung branching morphogenesis is orchestrated by the spatiotemporal distribution of ACTA2, SOX2, and SOX9. *Am J Physiol Lung Cell Mol Physiol* 314: L144–L149
- Datlinger P, Rendeiro AF, Schmid C, Krausgruber T, Traxler P, Klughammer J, Schuster LC, Kuchler A, Alpar D, Bock C (2017) Pooled CRISPR screening with single-cell transcriptome readout. *Nat Methods* 14: 297–301
- Dixit A, Parnas O, Li B, Chen J, Fulco CP, Jerby-Arnon L, Marjanovic ND, Dionne D, Burks T, Raychowdhury R et al (2016) Perturb-Seq: dissecting molecular circuits with scalable single-cell RNA profiling of pooled genetic screens. *Cell* 167: 1853–1866.e17
- Doench JG, Fusi N, Sullender M, Hegde M, Vaimberg EW, Donovan KF, Smith I, Tothova Z, Wilen C, Orchard R et al (2016) Optimized sgRNA design to maximize activity and minimize off-target effects of CRISPR-Cas9. *Nat Biotechnol* 34: 184–191
- Gerhardt B, Leesman L, Burra K, Snowball J, Rosenzweig R, Guzman N, Ambalavanan M, Sinner D (2018) Notum attenuates Wnt/ $\beta$ -catenin signaling to promote tracheal cartilage patterning. *Dev Biol* 436: 14–27
- Gerner-Mauro KN, Akiyama H, Chen J (2020) Redundant and additive functions of the four *Lef1/Tcf* transcription factors in lung epithelial progenitors. *Proc Natl Acad Sci U S A* 117: 12182–12191
- Gilbert LA, Horlbeck MA, Adamson B, Villalta JE, Chen Y, Whitehead EH, Guimaraes C, Panning B, Ploegh HL, Bassik MC et al (2014) Genome-scale CRISPR-mediated control of gene repression and activation. *Cell* 159: 647–661
- Gilbert LA, Larson MH, Morsut L, Liu Z, Brar GA, Torres SE, Stern-Ginossar N, Brandman O, Whitehead EH, Doudna JA et al (2013) CRISPR-mediated modular RNA-guided regulation of transcription in eukaryotes. *Cell* 154: 442–451
- Guo W, Keckesova Z, Donaher JL, Shibue T, Tischler V, Reinhardt F, Itzkovitz S, Noske A, Zürrer-Härdi U, Bell G et al (2012) Slug and Sox9 cooperatively determine the mammary stem cell state. *Cell* 148: 1015–1028
- He P, Lim K, Sun D, Pett JP, Jeng Q, Polanski K, Dong Z, Bolt L, Richardson L, Mamanova L et al (2022) A human foetal lung cell atlas uncovers proximal-distal gradients of differentiation and key regulators of epithelial fates. *bioRxiv* <https://doi.org/10.1101/2022.01.11.474933> [PREPRINT]
- Hein RFC, Wu JH, Holloway EM, Frum T, Conchola AS, Tsai Y-H, Wu A, Fine AS, Miller AJ, Szenker-Ravi E et al (2022) R-SPONDIN2+ mesenchymal cells form the bud tip progenitor niche during human lung development. *Dev Cell* 57: 1598–1614.e8
- Herriges JC, Verheyden JM, Zhang Z, Sui P, Zhang Y, Anderson MJ, Swing DA, Zhang Y, Lewandoski M, Sun X (2015) FGF-regulated ETV transcription factors control FGF-SHH feedback loop in lung branching. *Dev Cell* 35: 322–332
- Horlbeck MA, Gilbert LA, Villalta JE, Adamson B, Pak RA, Chen Y, Fields AP, Park CY, Corn JE, Kampmann M et al (2016) Compact and highly active next-generation libraries for CRISPR-mediated gene repression and activation. *Elife* 5: e19760
- Hsieh JC, Kodjabachian L, Rebbert ML, Rattner A, Smallwood PM, Samos CH, Nusse R, Dawid IB, Nathans J (1999) A new secreted protein that binds to Wnt proteins and inhibits their activities. *Nature* 398: 431–436
- Jinek M, Chylinski K, Fonfara I, Hauer M, Doudna JA, Charpentier E (2012) A programmable dual-RNA-guided DNA endonuclease in adaptive bacterial immunity. *Science* 337: 816–821
- Joung J, Konermann S, Gootenberg JS, Abudayyeh OO, Platt RJ, Brigham MD, Sanjana NE, Zhang F (2017) Genome-scale CRISPR-Cas9 knockout and transcriptional activation screening. *Nat Protoc* 12: 828–863
- Kalkan T, Bornelöv S, Mulas C, Diamanti E, Lohoff T, Ralsler M, Middelkamp S, Lombard P, Nichols J, Smith A (2019) Complementary activity of ETV5, RBPJ, and TCF3 drives formative transition from naive pluripotency. *Cell Stem Cell* 24: 785–801.e7
- Kamachi Y, Kondoh H (2013) Sox proteins: regulators of cell fate specification and differentiation. *Development* 140: 4129–4144
- Kotton DN, Morrisey EE (2014) Lung regeneration: mechanisms, applications and emerging stem cell populations. *Nat Med* 20: 822–832
- Labaki WW, Han MK (2020) Chronic respiratory diseases: a global view. *Lancet Respir Med* 8: 531–533
- Laughney AM, Hu J, Campbell NR, Bakhomou SF, Setty M, Lavallée V-P, Xie Y, Masilionis I, Carr AJ, Kottapalli S et al (2020) Regenerative lineages and immune-mediated pruning in lung cancer metastasis. *Nat Med* 26: 259–269
- Li L, Feng J, Zhao S, Rong Z, Lin Y (2021) SOX9 inactivation affects the proliferation and differentiation of human lung organoids. *Stem Cell Res Ther* 12: 343
- Li W, Xu H, Xiao T, Cong L, Love MI, Zhang F, Irizarry RA, Liu JS, Brown M, Liu XS (2014) MAGeCK enables robust identification of essential genes from genome-scale CRISPR/Cas9 knockout screens. *Genome Biol* 15: 554–512
- Mali P, Yang L, Esvelt KM, Aach J, Guell M, DiCarlo JE, Norville JE, Church GM (2013) RNA-guided human genome engineering via Cas9. *Science* 339: 823–826
- Mandegar MA, Huebsch N, Frolov EB, Shin E, Truong A, Olvera MP, Chan AH, Miyaoka Y, Holmes K, Spencer CI et al (2016) CRISPR interference efficiently induces specific and reversible gene silencing in human iPSCs. *Cell Stem Cell* 18: 541–553
- Marshall OJ, Brand AH (2015) damidseq\_pipeline: an automated pipeline for processing DamID sequencing datasets. *Bioinformatics* 31: 3371–3373
- Marshall OJ, Southall TD, Cheetham SW, Brand AH (2016) Cell-type-specific profiling of protein-DNA interactions without cell isolation using targeted DamID with next-generation sequencing. *Nat Protoc* 11: 1586–1598
- Miller AJ, Hill DR, Nagy MS, Aoki Y, Dye BR, Chin AM, Huang S, Zhu F, White ES, Lama V et al (2018) *In vitro* induction and *in vivo* engraftment of lung bud tip progenitor cells derived from human pluripotent stem cells. *Stem Cell Reports* 10: 101–119
- Morrisey EE, Hogan BLM (2010) Preparing for the first breath: genetic and cellular mechanisms in lung development. *Dev Cell* 18: 8–23
- Murakami K, Terakado Y, Saito K, Jomen Y, Takeda H, Oshima M, Barker N (2021) A genome-scale CRISPR screen reveals factors regulating Wnt-dependent renewal of mouse gastric epithelial cells. *Proc Natl Acad Sci U S A* 118: e2016806118
- Musa J, Aynaud M-M, Mirabeau O, Delattre O, Grünwald TG (2017) MYBL2 (B-Myb): a central regulator of cell proliferation, cell survival and differentiation involved in tumorigenesis. *Cell Death Dis* 8: e2895
- Ng AHM, Khoshakhlagh P, Rojo Arias JE, Pasquini G, Wang K, Swiersy A, Shipman SL, Appleton E, Kiaee K, Kohman RE et al (2021) A comprehensive library of human transcription factors for cell fate engineering. *Nat Biotechnol* 39: 510–519
- Nikolić MZ, Caritg O, Jeng Q, Johnson J-A, Sun D, Howell KJ, Brady JL, Laresgoiti U, Allen G, Butler R et al (2017) Human embryonic lung epithelial tips are multipotent progenitors that can be expanded *in vitro* as long-term self-renewing organoids. *Elife* 6: e26575

- Nikolić MZ, Sun D, Rawlins EL (2018) Human lung development: recent progress and new challenges. *Development* 145: dev163485
- Okubo T, Knoepfler PS, Eisenman RN, Hogan BLM (2005) Nmyc plays an essential role during lung development as a dosage-sensitive regulator of progenitor cell proliferation and differentiation. *Development* 132: 1363–1374
- Ostrin EJ, Little DR, Gerner-Mauro KN, Sumner EA, Ríos-Corzo R, Ambrosio E, Holt SE, Forcioli-Conti N, Akiyama H, Hanash SM et al (2018)  $\beta$ -Catenin maintains lung epithelial progenitors after lung specification. *Development* 145: dev160788
- Pacheco-Pinedo EC, Durham AC, Stewart KM, Goss AM, Lu MM, DeMayo FJ, Morrisey EE (2011) Wnt/ $\beta$ -catenin signaling accelerates mouse lung tumorigenesis by imposing an embryonic distal progenitor phenotype on lung epithelium. *J Clin Invest* 121: 1935–1945
- Planas-Paz L, Sun T, Pikiolek M, Cochran NR, Bergling S, Orsini V, Yang Z, Sigoillot F, Jetzer J, Syed M et al (2019) YAP, but Not RSPO-LGR4/5, signaling in biliary epithelial cells promotes a ductular reaction in response to liver injury. *Cell Stem Cell* 25: 39–53.e10
- Rawlins EL, Clark CP, Xue Y, Hogan BLM (2009) The Id2<sup>+</sup> distal tip lung epithelium contains individual multipotent embryonic progenitor cells. *Development* 136: 3741–3745
- Ringel T, Frey N, Ringnald F, Janjuha S, Cherkaoui S, Butz S, Srivatsa S, Pirkel M, Russo G, Villiger L et al (2020) Genome-scale CRISPR screening in human intestinal organoids identifies drivers of TGF- $\beta$  resistance. *Cell Stem Cell* 26: 431–440.e8
- Rockich BE, Hrycaj SM, Shih HP, Nagy MS, Ferguson MAH, Kopp JL, Sander M, Wellik DM, Spence JR (2013) Sox9 plays multiple roles in the lung epithelium during branching morphogenesis. *Proc Natl Acad Sci U S A* 110: E4456–E4464
- Sakornsakolpat P, Prokopenko D, Lamontagne M, Reeve NF, Guyatt AL, Jackson VE, Shrine N, Qiao D, Bartz TM, Kim DK et al (2019) Genetic landscape of chronic obstructive pulmonary disease identifies heterogeneous cell-type and phenotype associations. *Nat Genet* 51: 494–505
- Sanjana NE, Shalem O, Zhang F (2014) Improved vectors and genome-wide libraries for CRISPR screening. *Nat Methods* 11: 783–784
- Schmitt M, Metzger M, Gradl D, Davidson G, Orian-Rousseau V (2015) CD44 functions in Wnt signaling by regulating LRP6 localization and activation. *Cell Death Differ* 22: 677–689
- Schuijers J, Clevers H (2012) Adult mammalian stem cells: the role of Wnt, Lgr5 and R-spondins. *EMBO J* 31: 2685–2696
- Shih HP, Seymour PA, Patel NA, Xie R, Wang A, Liu PP, Yeo GW, Magnuson MA, Sander M (2015) A gene regulatory network cooperatively controlled by Pdx1 and Sox9 governs lineage allocation of foregut progenitor cells. *Cell Rep* 13: 326–336
- Smith BM, Traboulsi H, Austin JHM, Manichaikul A, Hoffman EA, Bleecker ER, Cardoso WV, Cooper C, Couper DJ, Dashnaw SM et al (2018) Human airway branch variation and chronic obstructive pulmonary disease. *Proc Natl Acad Sci U S A* 115: E974–E981
- Southall TD, Gold KS, Egger B, Davidson CM, Caygill EE, Marshall OJ, Brand AH (2013) Cell-type-specific profiling of gene expression and chromatin binding without cell isolation: assaying RNA Pol II occupancy in neural stem cells. *Dev Cell* 26: 101–112
- Sun D, Evans L, Perrone F, Sokleva V, Lim K, Rezakhani S, Lutolf M, Zilbauer M, Rawlins EL (2021) A functional genetic toolbox for human tissue-derived organoids. *Elife* 10: e67886
- Tian R, Abarientos A, Hong J, Hashemi SH, Yan R, Dräger N, Leng K, Nalls MA, Singleton AB, Xu K et al (2021) Genome-wide CRISPRi/a screens in human neurons link lysosomal failure to ferroptosis. *Nat Neurosci* 24: 1020–1034
- Tian R, Gachechiladze MA, Ludwig CH, Laurie MT, Hong JY, Nathaniel D, Prabhu AV, Fernandopulle MS, Patel R, Abshari M et al (2019) CRISPR interference-based platform for multimodal genetic screens in human iPSC-derived neurons. *Neuron* 104: 239–255.e12
- Tosti L, Ashmore J, Tan BSN, Carbone B, Mistri TK, Wilson V, Tomlinson SR, Kaji K (2018) Mapping transcription factor occupancy using minimal numbers of cells *in vitro* and *in vivo*. *Genome Res* 28: 592–605
- Weaver M, Batts L, Hogan BLM (2003) Tissue interactions pattern the mesenchyme of the embryonic mouse lung. *Dev Biol* 258: 169–184
- Zhang Y, Goss AM, Cohen ED, Kadzik R, Lepore JJ, Muthukumaraswamy K, Yang J, DeMayo FJ, Whitsett JA, Parmacek MS et al (2008) A Gata6-Wnt pathway required for epithelial stem cell development and airway regeneration. *Nat Genet* 40: 862–870
- Zhang Z, Newton K, Kummerfeld SK, Webster J, Kirkpatrick DS, Phu L, Eastham-Anderson J, Liu J, Lee WP, Wu J et al (2017) Transcription factor ETV5 is essential for the maintenance of alveolar type II cells. *Proc Natl Acad Sci U S A* 114: 3903–3908
- Zhang Z, Verheyden JM, Hassell JA, Sun X (2009) FGF-regulated ETV genes are essential for repressing Shh expression in mouse limb buds. *Dev Cell* 16: 607–613



**License:** This is an open access article under the terms of the [Creative Commons Attribution](https://creativecommons.org/licenses/by/4.0/) License, which permits use, distribution and reproduction in any medium, provided the original work is properly cited.