

**UCLA**

**UCLA Previously Published Works**

**Title**

Inequity in Cardio-Oncology: Identifying Disparities in Cardiotoxicity and Links to Cardiac and Cancer Outcomes.

**Permalink**

<https://escholarship.org/uc/item/7889r0mk>

**Authors**

Ohman, Rachel E

Yang, Eric H

Abel, Melissa L

**Publication Date**

2021-12-16

Peer reviewed

CONTEMPORARY REVIEW

# Inequity in Cardio-Oncology: Identifying Disparities in Cardiotoxicity and Links to Cardiac and Cancer Outcomes

Rachel E. Ohman , MD; Eric H. Yang , MD; Melissa L. Abel , MD

**ABSTRACT:** Minority and underresourced communities experience disproportionately high rates of fatal cancer and cardiovascular disease. The intersection of these disparities within the multidisciplinary field of cardio-oncology is in critical need of examination, given the risk of perpetuating health inequities in the growing vulnerable population of patients with cancer and cardiovascular disease. This review identifies 13 cohort studies and 2 meta-analyses investigating disparate outcomes in treatment-associated cardiotoxicity and situates these data within the context of oncologic disparities, preexisting cardiovascular disparities, and potential system-level inequities. Black survivors of breast cancer have elevated risks of cardiotoxicity morbidity and mortality compared with White counterparts. Adolescent and young adult survivors of cancer with lower socioeconomic status experience worsened cardiovascular outcomes compared with those of higher socioeconomic status. Female patients treated with anthracyclines or radiation have higher risks of cardiotoxicity compared with male patients. Given the paucity of data, our understanding of these racial and ethnic, socioeconomic, and sex and gender disparities remains limited and large-scale studies are needed for elucidation. Prioritizing this research while addressing clinical trial inclusion and access to specialist care is paramount to reducing health inequity.

**Key Words:** cardiotoxicity ■ cardio-oncology ■ disparities ■ social determinants of health

Cardiovascular disease (CVD) and cancer are the leading causes of death in the United States, with a disproportionate burden of illness among Black patients, lower income communities, and other minority groups.<sup>1–5</sup> Incidence and mortality disparities in cancer and CVD remain pervasive because of complex interactions of social determinants of health including social, economic, geographic, and cultural factors that affect underlying biology and health-related behaviors.<sup>1–3,6–11</sup> These social determinants of health are thought to be modulated by sex and gender<sup>12</sup> and structural racism<sup>13,14</sup>—defined as economic, institutional, cultural, and historical forces that systematically advantage White populations and disadvantage racial and ethnic minority populations. Such disparities have been magnified by the COVID-19 pandemic, which unevenly has affected underresourced communities

and racial and ethnic minority patients in the United States.<sup>15–17</sup> Cancer health disparities may be intertwined with cardiac outcomes, particularly given the rising overall incidence of cancer (owing to improved cancer screening and survival among common cancers)<sup>1,2,4</sup> that coincides with the increasing prevalence of CVD among patients with cancer.

Metabolic effects of malignancy, direct adverse effects of cancer therapeutics, and indirect effects of treatment (eg, physical deconditioning) have profound impacts on the cardiovascular health of patients with cancer.<sup>18–21</sup> Indeed, CVD has become a significant cause of morbidity and mortality among survivors of cancer.<sup>22,23</sup> For instance, among postmenopausal women with hormone receptor positive breast cancer, CVD has been shown to rival or exceed recurrent malignancy as the most common cause of death.<sup>24</sup> Now

Correspondence to: Rachel Ohman, MD, Department of Medicine, University of California at Los Angeles, 757 Westwood Plaza, Los Angeles, CA 90095.  
E-mail: rohman@mednet.ucla.edu

Supplementary Material for this article is available at <https://www.ahajournals.org/doi/suppl/10.1161/JAHA.121.023852>

For Sources of Funding and Disclosures, see page 14.

© 2021 The Authors. Published on behalf of the American Heart Association, Inc., by Wiley. This is an open access article under the terms of the Creative Commons Attribution-NonCommercial-NoDerivs License, which permits use and distribution in any medium, provided the original work is properly cited, the use is non-commercial and no modifications or adaptations are made.

JAHA is available at: [www.ahajournals.org/journal/jaha](http://www.ahajournals.org/journal/jaha)

## Nonstandard Abbreviations and Acronyms

<b>AIAN</b>	American Indian and Alaska Native
<b>API</b>	Asian and Pacific Islander
<b>AYA</b>	adolescent and young adult

with an estimated 16.9 million people in the United States living with a history of cancer,<sup>4</sup> the prevalence of CVD among survivors of cancer continues to increase.

The multidisciplinary field of cardio-oncology has emerged to balance cancer treatment with the prevention and management of associated cardiac disease. Collaborations across oncology and cardiology have developed rapidly to address this imperative, with a growing understanding of the cardiotoxicity of cancer treatment in context of other cardiovascular risk factors. Preexisting cardiovascular risk factors and CVD are now known to be associated strongly with post-treatment cardiac dysfunction.<sup>25–29</sup>

Given the cross-talk between cancer and cardiac disease, it is critical that we elucidate disparities in cardio-oncology in order to improve health outcomes for the most vulnerable patients including Black populations and other minority populations with cancer. Unfortunately, our current understanding of intersectional disparities within cardio-oncology is limited by a marked paucity of data. Two recently published reviews focus on racial and ethnic disparities in cardio-oncology,<sup>30,31</sup> but our narrative review summarizes the available literature on disparities in cardiotoxicity outcomes across race and ethnicity, sex and gender, and socioeconomic status (SES) among patients with cancer in the United States. We situate these data in the context of disparities in cancer and preexisting CVD, as these bodies of knowledge provide important context for data interpretation. Studies to date on disparities in cardiotoxicity are limited in number and scope, but the available data presented here merit discussion to inform future investigations on disparities in cardio-oncology and help create actionable strategies for equitable care.

## OVERVIEW OF CANCER DISPARITIES

It is important for even the general cardiologist to understand basic cancer disparities together with cardiovascular ones given that most patients with cancer are more likely to have access to a general cardiologist than a cardio-oncology specialist. Disparities exist across nearly all aspects of oncologic care from screening to survivorship.<sup>1,8</sup> On average, patients of lower SES have increased cancer incidence and decreased survival compared with their higher SES

counterparts.<sup>2</sup> Individual SES is shaped by a multitude of factors including education, employment status and occupation, income, wealth, and health insurance. Unfortunately, the socioeconomic gap in cancer appears to be widening: a 2017 longitudinal study of cancer mortality demonstrated that inequalities based on SES increased from 1979 to 2011, primarily because of disproportionately improved mortality for high SES patients.<sup>32</sup> The impact of this widening gap is likely to be felt broadly given the rising overall incidence of cancer.

Even after controlling for income, significant disparities persist for racial and ethnic minority patients with cancer in the United States.<sup>33</sup> Within this review, we refer to “racial and ethnic” populations with the understanding that race and ethnicity are social constructs that reference diverse groups of people. Racial and ethnic minority populations are categorized by the US Office of Management and Budget into Black populations, Hispanic/Latino populations (referred to as Hispanic/Latinx in this review), Asian populations and Native Hawaiian/other Pacific Islander populations (referred to as Asian and Pacific Islander in this review), and American Indian and Alaska Native (AIAN) populations,<sup>6</sup> though it bears noting that this grouping does not address ancestry, genetic admixture, immigration status, or regional communities. For most cancers, White patients are more likely than patients of other races and ethnicities to be diagnosed at earlier stages, receive aggressive care, and have improved chances of survival even when accounting for staging.<sup>1,4,7,34</sup> Survival rates are lower for Black patients and AIAN patients in comparison to White patients for each major type of cancer except for renal and pancreatic cancer, for which mortality is approximately the same.<sup>1</sup> Although there are some instances of genetic differences in tumor biology (eg, the increased incidence of triple hormone receptor negative breast cancer in Black women), tumor genetics do not equate germline genetics and differential treatment responses alone do not account for racial and ethnic disparities in cancer outcomes.<sup>7,35</sup> Similarly, SES alone does not account for racial and ethnic cancer disparities.<sup>33</sup> Various other social determinants of health including environmental pollution exposures, neighborhood safety-related concerns, and perceived racial discrimination have been implicated in these disparities,<sup>2,7,8</sup> influenced by ongoing structural racism.<sup>36,37</sup>

Sex and gender disparities as well as geographic disparities also persist among patients with cancer. Male patients across different races/ethnicities and ages continue to have increased rates of cancer and worsened prognosis in comparison to female patients.<sup>1</sup> The reasons for this are not understood completely but are thought to reflect differences in health-related behaviors, comorbid risk factors, and sex hormones.<sup>1,38</sup> Geographic disparities are most prominent among

highly preventable cancers including lung and cervical cancer, reflecting the influences of existing risk factors, health-related behaviors, and regional screening practices.<sup>1</sup>

## DISPARITIES IN PREEXISTING CARDIOVASCULAR DISEASE

Disparities within preexisting cardiovascular risk factors and CVD must be addressed given their strong association with posttreatment cardiac dysfunction.<sup>25–29</sup> Additionally, understanding cardiovascular disparities may provide valuable insight for discussions on understudied disparities in cardio-oncology. Despite a decline in cardiovascular mortality nationwide, the burden of CVD remains disparately distributed among under-resourced communities and racial and ethnic minority populations.<sup>9–11</sup> These disparities are discussed comprehensively in recent scientific statements and advisories from the American Heart Association,<sup>9,10,39–42</sup> in a recent workshop from the National Heart, Lung, and Blood Institute,<sup>11</sup> and most recently in a comprehensive narrative review.<sup>43</sup> Race and ethnicity, SES, neighborhood resources and environmental features, sex and gender, and cultural factors including psychosocial stress (eg, from racial discrimination), acculturation among immigrant communities, and social cohesion have been associated with disparate incidence and mortality from CVD.<sup>9–11,39–42,44,45</sup> As described in a recent American Heart Association presidential advisory,<sup>13</sup> these factors are in turn influenced by structural racism. Forces of structural racism as well as other forms of racism, including interpersonal, are known to have downstream effects that modulate social determinants of health and perpetuate social, economic, and health inequities in general as well as cardiovascular health.<sup>13,14,46,47</sup> However, racism is infrequently named in published literature as a contributor to health disparities, and little research has been done to evaluate in detail its effects on health.<sup>13,48</sup> Some genome-wide association studies have identified genetic loci differentially associated with CVD in Black populations<sup>9</sup> and AIAN populations<sup>41</sup> as well as some polymorphisms associated with CVD across racial and ethnic groups,<sup>40</sup> but these data must be considered in context of the variability of results from replication studies, complex interaction between genes and environment, and risks of overattributing importance to genetic risk alleles at the expense of addressing significant contributions from social and structural determinants of health.<sup>9,40,41</sup>

Black populations bear a disproportionately high burden of CVD and associated cardiovascular risk factors when compared with White counterparts.<sup>9,43</sup> Black patients have been shown to have earlier ages of onset as well as higher incidence of hypertension,

dyslipidemia, diabetes, and obesity when compared with White patients. They also have been shown to experience earlier onset as well as higher incidence and mortality of heart failure, sudden cardiac arrest, cerebrovascular disease, and peripheral arterial disease.<sup>9</sup> Additionally, they have experienced smaller decreases in the incidence of coronary artery disease in comparison to White populations.<sup>9</sup> These disparities have been associated with a multitude of factors including SES and other social determinants of health.<sup>9,10</sup> However, persistence of these disparities among Black patients across the socioeconomic spectrum also implicates social epigenetic factors including psychosocial stress from racial discrimination and structural racism itself,<sup>13</sup> although the scope of its impact requires further investigation as mentioned previously. In addition to explicit forms of racism, implicit bias continues to contribute to disparities.<sup>10</sup> For example, Black patients are less likely than White counterparts to receive cardiac catheterization for suspected angina<sup>49</sup> and, together with other racial and ethnic minority patients, are less likely than White patients to receive cardiopulmonary resuscitation for out-of-hospital arrest.<sup>50</sup> Genetic differences alone do not explain these differences for the reasons mentioned previously, as well as the clear genetic heterogeneity and admixture among populations of African descent.<sup>51,52</sup>

Disparities among Hispanic/Latinx as well as Asian and Pacific Islander (API) populations are masked by the reporting of disparities data in aggregate. Although some studies have shown a lower incidence of CVD among Hispanic/Latinx populations, recent discussions have emphasized the heterogeneity among this population and the variability of cardiac risk profiles among groups of different national origin or ancestral heritage.<sup>39,43,53</sup> Preliminary investigations suggest contributions from social determinants of health including language discordance, health literacy, cultural traditions, and psychosocial stress from perceived discrimination.<sup>39</sup> Heterogeneity among people of API descent also continues to be masked by surveys and studies that gather data on API patients in aggregate.<sup>40</sup> Among immigrant Hispanic/Latinx populations as well as immigrant API populations born outside the United States, acculturation and duration of US residence have been associated with worsened cardiovascular risk factors and CVD.<sup>39,40</sup> However, the direct relationship between social determinants of health, perceived discrimination, acculturation, and structural racism has not been explored for any of these groups.<sup>13,39,40</sup>

AIAN populations experience the highest morbidity and mortality from CVD of any subgroup in the United States.<sup>41,54</sup> These populations share the same traditional cardiovascular risk factors as other groups, but with some distinctions: among AIAN populations, diabetes is the single-most important risk factor for CVD,

with a 3-fold elevated risk of diabetes in comparison to White populations.<sup>41</sup> Additionally, renal impairment is a unique independent risk factor for predicting CVD.<sup>41</sup> Common social determinants of health including poverty, education, unemployment, and housing also affect CVD in this population, as well as distinct environmental factors including toxic metal exposure and groundwater contamination.<sup>41</sup> The influence of governmental exploitation and structural discrimination has been referenced in relation to these CVD disparities but has not been investigated comprehensively.

The absolute numbers of women living with and dying from CVD are greater than those for men, and coronary artery disease mortality rates are rising for women aged 35 to 44 years.<sup>12</sup> Although women and men share the same cardiovascular risk factors, the prevalence of some risk factors differ: women older than 65 years old and women older than 20 years old have a higher prevalence than men for hypertension and diabetes, respectively.<sup>12</sup> Additionally, rates of physical inactivity are higher for women than men.<sup>12</sup> These differences may be influenced by gender-based health behaviors.<sup>12</sup> Additionally, psychosocial stress from marital tension and the stress of traditional caregiving gender roles may contribute to cardiovascular risk factors.<sup>12</sup> Upstream factors of sexism also have been associated with increased risk of posttraumatic stress disorder, psychosocial stress, and health-related behaviors like alcohol and tobacco use.<sup>12,55</sup> In the medical domain, inadequate treatment by providers in the management of acute and chronic cardiac disease may also be contributing to sex and gender disparities. Women with known coronary artery disease are less likely to be on appropriate lipid-lowering therapy and aspirin for secondary prevention.<sup>56,57</sup> Although women are more likely to be treated for hypertension than men, they have achieved poorer levels of blood pressure control when matched for age, ethnicity, and comorbidities.<sup>56</sup> Women are also less likely to achieve a hemoglobin A1c target of <7% for appropriate diabetes control and cardiac risk mitigation.<sup>56</sup> It is well-established that the clinical presentation and inpatient treatment of acute coronary syndrome differs between men and women, and several studies have demonstrated that fewer women are started on evidence-based secondary prevention medications on discharge.<sup>57</sup> The reasons for these examples of substandard treatment need to be explored further, but implicit bias may play a contributory role. Implicit bias has been shown to influence gender-based decision-making in coronary artery disease,<sup>49,58</sup> but additional research is needed.

The persistence of race and ethnicity, socioeconomic, and sex and gender disparities among patients with CVD is deeply concerning, and raises the alarm for parallel disparities in interdisciplinary areas of medical care including cardio-oncology.

## CARDIO-ONCOLOGY

Although many studies on treatment-associated cardiotoxicity primarily define this entity as clinical heart failure and/or radiographic measurements of left ventricular systolic dysfunction, possible adverse short- and long-term cardiovascular effects encompass systolic and/or diastolic dysfunction, valvular disease, conduction abnormalities, coronary artery disease, impaired cardiac remodeling, disrupted mechanisms of cardiac homeostasis, vascular disease, and thrombosis.<sup>59,60</sup> Such adverse effects have been associated with nearly all categories of cancer therapy.

To inform our discussion of disparities in treatment-associated cardiotoxicity, the most common and clinically relevant cardiotoxicity manifestations are summarized here (Table 1).<sup>61–68</sup> Comprehensively documenting the heterogeneous spectrum of short- and long-term cardiotoxicities seen in both historical and novel cancer therapeutics is beyond the scope of this review; these cardiotoxicities are described elsewhere.<sup>59,60,62,63,69–72</sup>

In the available guidelines for the prevention, screening, surveillance, and attenuation of cancer treatment-associated cardiotoxicity from the American Society of Clinical Oncology,<sup>25</sup> European Society of Medical Oncology,<sup>73</sup> and the American Heart Association,<sup>74</sup> the identification of patients at elevated risk is viewed as the first step in reducing cardiotoxicity. In identifying these patients, it is imperative to recognize which patients have predisposing cardiovascular risk factors and preexisting cardiac disease. Age as well as preexisting diabetes, hypertension, hyperlipidemia, and tobacco smoking have been associated with an increased risk of cardiac dysfunction among patients with cancer treated with anthracyclines or trastuzumab.<sup>26–29</sup> A large-scale retrospective study found that among patients treated for breast cancer, lung cancer, multiple myeloma, and non-Hodgkin lymphoma, the presence of 2 or more cardiovascular risk factors conferred an even higher risk of post-treatment CVD.<sup>75</sup> The presence of preexisting reduced systolic function and coronary artery disease has also been linked to increased rates of treatment-associated cardiotoxicity.<sup>27–29</sup> The shared risk factors for cancer and CVD are thought to influence the pathogenesis of both disease entities as well as treatment-associated cardiotoxicity.<sup>76,77</sup>

## RISKS OF SYSTEM-LEVEL INEQUITY IN CARDIO-ONCOLOGY: ACCESS TO SPECIALTY CARE

We suspect that the screening, surveillance, and management of treatment-associated cardiotoxicity is influenced by social and structural determinants of health

**Table 1. Cardiotoxicities Associated With Common Cancer Therapeutics**

Chemotherapy	Cardiotoxicity (relative incidence*)
<b>Anthracyclines</b>	
Doxorubicin/ Daunorubicin	Heart failure/left ventricular dysfunction (common), arrhythmias
Epirubicin	Heart failure/left ventricular dysfunction (common)
<b>Antimetabolites</b>	
5-Fluorouracil	Cardiac ischemia (intermediate), arrhythmias, angina, heart failure
Methotrexate	Pericardial effusion
Capecitabine	Cardiac ischemia (intermediate)
<b>Platinum-based</b>	
Cisplatin	Arrhythmias (rare), angina (rare)
<b>Microtubule inhibitors</b>	
Paclitaxel	Heart failure/left ventricular dysfunction (intermediate), cardiac ischemia (rare), QTc prolongation (rare), arrhythmia (rare)
Docetaxel	Heart failure/left ventricular dysfunction (intermediate), cardiac ischemia (rare)
<b>Alkylating agents</b>	
Cyclophosphamide	Heart failure/left ventricular dysfunction (intermediate), angina
Ifosfamide	Heart failure/left ventricular dysfunction (rare), arrhythmias
Mitomycin	Heart failure (common)
<b>Immunotherapy</b>	
<b>Monoclonal antibodies</b>	
Trastuzumab (HER-2)	Heart failure (intermediate-common), hypertension (intermediate)
Bevacizumab (vascular endothelial growth factor)	Hypertension (common), myocardial ischemia (intermediate-common), heart failure (intermediate)
Rituximab (CD-20)	Arrhythmia, heart failure, myocardial ischemia
<b>Immune checkpoint inhibitors</b>	
Pembrolizumab/ Nivolumab (PD-1)	Myocarditis/pericarditis (intermediate, more common with combined immune checkpoint inhibitor therapy), heart failure (rare), arrhythmias (rare), pericardial disease (rare), atherosclerotic disease
Ipilimumab (CTLA-4)	
<b>Chimeric antigen T-cell therapies</b>	
Tisagenlecleucel	Arrhythmia <sup>†</sup> (common), ventricular dysfunction <sup>†</sup> (common)
Axicabtagene ciloleucel	
<b>Tyrosine kinase inhibitors</b>	
Imatinib	Heart failure (rare), arrhythmias (rare)
Dasatinib	Heart failure (common), pulmonary hypertension (rare)
Nilotinib	Heart failure, myocardial ischemia (common), QT prolongation (intermediate)
Sunitinib	Hypertension (common), heart failure (intermediate-common)
Sorafenib	Hypertension (common), heart failure (intermediate-common)

(Continued)

**Table 1. Continued**

Ponatinib	Myocardial ischemia (common), hypertension (common), heart failure (intermediate-common), arrhythmias (intermediate), peripheral vascular disease
<b>Proteasome inhibitors</b>	
Bortezomib	Heart failure (intermediate-common), arrhythmia, myocardial ischemia
Thoracic radiation <sup>‡</sup>	Myocardial ischemia (common), conduction abnormalities (common), peripheral vascular disease (common), heart failure (common), valvular disease (intermediate-common), pericardial disease (intermediate)

\*When possible, the incidence of each reported cardiotoxicity is categorized as rare <1%, intermediate 1% to 5%, or common >5%. However, the incidence of many toxicities cannot be determined reliably owing to insufficient data.

<sup>†</sup>Occur in setting of cytokine release syndrome.

<sup>‡</sup>The overall incidence of radiation-induced cardiotoxicity varies depending on dose and historical era. Incidence of fatal radiation-associated cardiotoxicity is estimated at 1% to 7%.

References: 61–68.

including health insurance status, geographic distance from specialty care, and transportation barriers.

Many people with cancer still do not have access to health insurance: among states that did not pursue Affordable Care Act Medicaid expansions, 1 in 5 survivors of cancer remains uninsured.<sup>78</sup> Even among those with insurance, cardio-oncology specialists are not readily accessible to most people. Despite the rapid growth of the field,<sup>79</sup> specialized cardio-oncology training and patient access to cardio-oncology care is still limited world- and nationwide. Indeed, few cardiology fellowships offer formal training in cardio-oncology<sup>80</sup> and institutions with cardio-oncology services are clustered geographically in the Northeast and California.<sup>80</sup> Even in communities with access to cardio-oncology providers, some patients may face local barriers to transportation that can impede regular access to specialist care. Among the general population in the United States, transportation barriers to medical care have been shown to have a disproportionately powerful influence on patients of lower SES and those with chronic conditions.<sup>81</sup> Ultimately, patients with cancer may find it difficult to access cardio-oncology care because of inadequate insurance coverage, distance from cardio-oncology providers, and barriers to transportation. The degree to which these barriers mediate disparities in cardiotoxicity screening and management must be explored further.

## RISKS OF SYSTEM-LEVEL INEQUITY IN CARDIO-ONCOLOGY: COST DIFFERENTIALS FOR TREATMENT WITH REDUCED CARDIOTOXICITY

Among strategies for cardiotoxicity prevention, additional socioeconomic factors may contribute to

cardiotoxicity disparities. Liposomal doxorubicin (used for multiple myeloma, Kaposi's sarcoma, ovarian cancer, and breast cancer) has been associated with lower rates of reduced left ventricular ejection fraction and clinical heart failure<sup>82,83</sup> but is substantially more expensive than standard formulations. Continuous infusion of anthracycline therapy has been associated with lower risks of subclinical and clinical cardiotoxicity<sup>84</sup> but comes with elevated costs. The degree to which these cost differentials for less cardiotoxic therapies contribute to disparate cardiac outcomes among patients with cancer is not yet known.

## **RISKS OF SYSTEM-LEVEL INEQUITY IN CARDIO-ONCOLOGY: INADEQUATE REPRESENTATION IN CLINICAL TRIALS**

We suspect that inadequate representation of diverse study participants in clinical studies on cardioprotective strategies for prevention of treatment-associated cardiotoxicity may also contribute to outcome disparities. It is well-established that racial and ethnic minority patients have been underrepresented in seminal clinical trials that resulted in Food and Drug Administration drug approvals for cancer therapeutics.<sup>85</sup> Cardioprotection studies have investigated neurohormonal agents (including angiotensin-converting enzyme inhibitors, angiotensin II receptor blockers, and beta blockers), statins, exercise, and dexrazoxane. Only 21% of identified cohort studies and clinical trials on cardioprotective therapies provide either demographic information on the race and ethnicity of study participants or demographic information on participants' socioeconomic status or other social determinants of health, though it does bear noting that some of the included studies were conducted in European countries with universal health care (Table S1).<sup>86-114</sup> In accordance with the National Institutes of Health Revitalization Act,<sup>115</sup> achieving diverse representation in clinical trials on cardioprotective therapies must be made a priority. Doing so will require direct targeting of known barriers to clinical trial enrollment (including patient trust, healthcare access, education, and communication)<sup>116</sup> as well as explorations of factors specific to cardioprotection studies.

## **RISKS OF SYSTEM-LEVEL INEQUITY IN CARDIO-ONCOLOGY: PATIENT DISTRUST**

Additional investigation is needed on the impact of healthcare system distrust on cardio-oncology care delivery. Many racial and ethnic minority populations

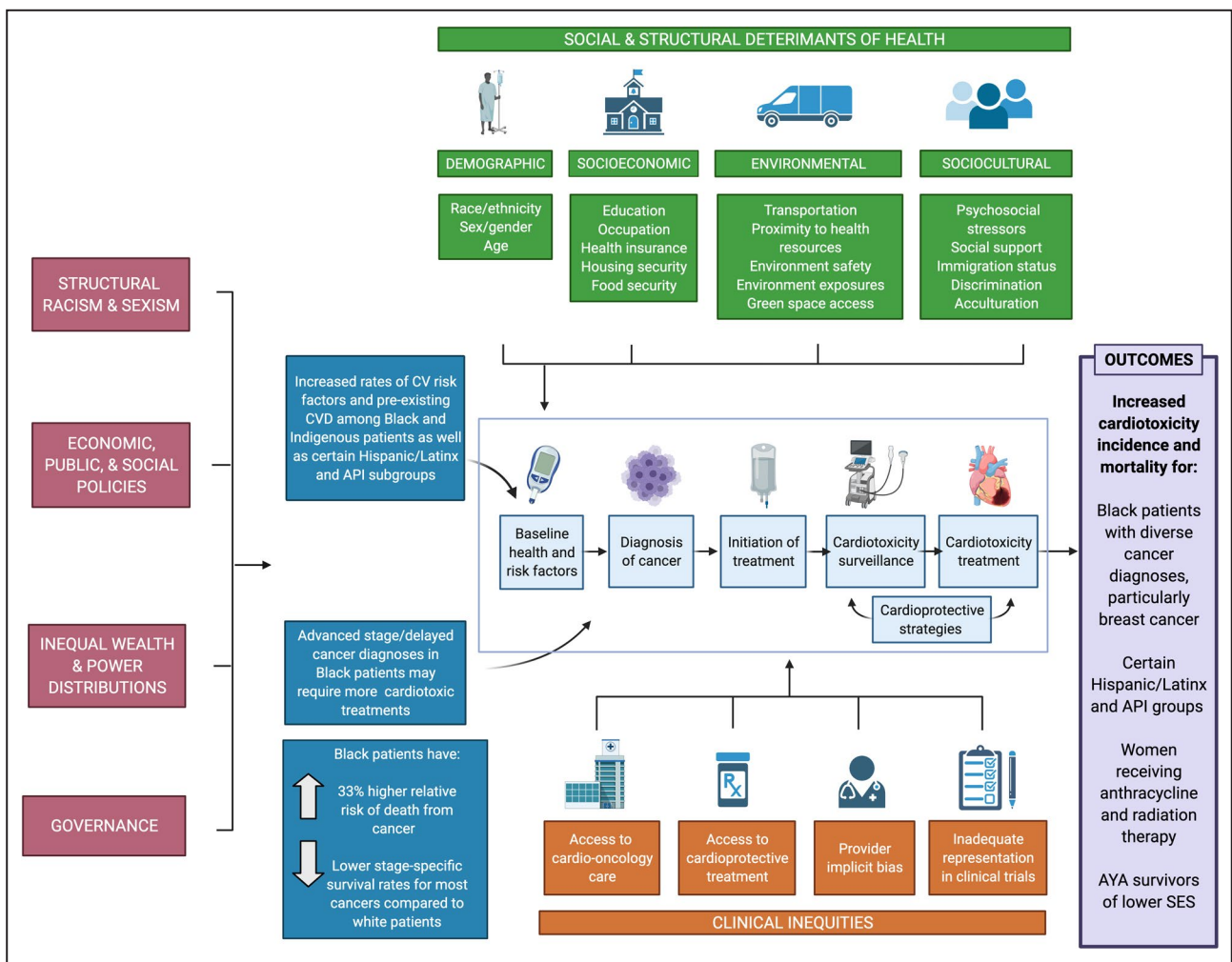
in the United States have developed distrust of institutionalized healthcare settings,<sup>117</sup> influenced by the history of slavery, living legacy of oppression, and exploitation of Black and brown bodies in instances such as the Tuskegee syphilis experiment<sup>118</sup> and government-sanctioned coerced sterilization of women of color, immigrants, and people with disabilities during the eugenics movement in the United States.<sup>119</sup> Medical distrust has been associated with decreased participation in clinical research and decreased use of general healthcare services as well as oncologic care.<sup>120-122</sup> The unstudied impact of medical distrust on participations in cardio-oncology care is of great concern. Specifically, we must investigate how patient distrust shapes participation in preventative cardiotoxicity screening as well as treatment for detected cardiac dysfunction in the context of noxious medical and radiation treatments for cancer.

## **DISPARITIES IN CARDIO-ONCOLOGY**

There are limited data on outcome disparities in treatment-related cardiotoxicity. Our literature review identified 13 observational cohort studies and 2 systematic reviews with meta-analyses. Most of the studies identified in our review addressed disparate outcomes according to race and ethnicity among patients with breast cancer. Few investigations have examined disparities in other types of cancer or among other underrepresented groups. The major findings on outcomes disparities in treatment-associated cardiotoxicity are presented in the following sections and summarized visually (Figure 1).

## **RACE AND ETHNICITY DISPARITIES AMONG BLACK PATIENTS WITH CANCER AND ASIAN AND PACIFIC ISLANDER PATIENTS WITH CANCER**

Most studies to date explore differences in cardiovascular outcomes between Black and White patients with breast cancer. Black women diagnosed with breast cancer are 40% more likely to die than their White counterparts.<sup>123</sup> Differences in cardiotoxicity are hypothesized to contribute to this disparity, particularly as Black women are more likely to have underlying CVD and more frequently have high-risk cancer requiring cardiotoxic treatment.<sup>124</sup> Available research on this topic collectively supports this hypothesis (Table 2<sup>125-133</sup> and summarized in Figure 1). Black patients with HER2+ breast cancer treated with trastuzumab are more likely to develop cardiotoxicity as defined by declines in left ventricular ejection fraction.<sup>128,131</sup> In a retrospective cohort study at Johns Hopkins University, this risk persisted even after controlling for age, disease state, and



**Figure 1. Disparities in cardio-oncology.**

A visual summary of disparities in cardio-oncology with a depiction of contributing etiologies. This figure demonstrates the influence of upstream factors (including structural racism and sexism) and intermediary factors (including social and structural determinants of health as well as clinical inequities in cardio-oncology) on preexisting CVD and cancer disparities in the context of cardio-oncologic care and summarizes the major outcome disparities in cardiotoxicity from studies presented in this review. API indicates Asian and Pacific Islander; CV, cardiovascular; CVD, cardiovascular disease; and SES, socioeconomic status. Created by biorender.com.

cardiovascular risk factors,<sup>131</sup> although it is not clear that the degree of risk factor control was evaluated. Importantly, the development of cardiotoxicity correlated strongly with treatment cessation. An earlier retrospective cohort study at Howard University also found that Black patients treated with doxorubicin were more likely than non-Black patients to develop early cardiotoxicity,<sup>125</sup> although these patients were compared with non-Black control subjects in a separate cohort study. A national multicenter prospective cohort study of patients with metastatic HER2+ breast cancer found that Black patients with diabetes or hypertension were more likely to experience cardiotoxicity after trastuzumab compared with White counterparts with the same conditions, although levels of statistical significance were not reported.<sup>127</sup> In a meta-analysis of

18 studies across North America and Europe in which patients were treated with anthracycline therapy for a variety of cancers, Black race as well as cardiovascular risk factors were independent predictors of clinical and subclinical cardiotoxicity<sup>134</sup>; this analysis is not shown in Table 2.

Mortality from CVD among Black patients with breast cancer is strikingly elevated (summarized in Figure 1). One of the largest studies on this topic used SEER (Surveillance, Epidemiology, and End Results) data to compare death from breast cancer and CVD retrospectively between 43 562 Black and 364 025 White patients with invasive breast cancer.<sup>132</sup> Note that these groups were characterized as non-Hispanic Black and White patients. The results showed that the cumulative incidence of CVD-related mortality was



**Table 2. Cardiotoxicity Disparities by Race and Ethnicity Among Patients With Breast Cancer**

Author, setting, sample, follow-up	Diagnosis/treatment	Study design	Results	Conclusions
Hasan, 2004 <sup>125</sup> Howard University Black n=100 Non-Black n=399 (from separate study) Median follow-up: 1.3 y	Breast cancer treated with doxorubicin	Retrospective cohort study measuring development of congestive heart failure or LVEF ≤45%	Higher incidence of cardiotoxicity among Black patients in registry in comparison to control population of non-Black patients (7/100 in comparison to 10/399, <i>P</i> <0.027 with OR, 2.93; 95% CI, 0.98–8.6)	Black patients with breast cancer developed early cardiotoxicity after treatment with doxorubicin more frequently than non-Black controls
Braithwaite, 2009 <sup>126</sup> Kaiser Permanente Northern California White n=838 Black n=416 Mean follow-up: 9 y	Invasive breast cancer, any treatment	Retrospective cohort study comparing overall crude mortality and breast cancer mortality	Higher all-cause mortality in Black patients compared with White patients (165 [39.7%] vs 279 [33.3%], <i>P</i> =0.03). Hypertension was associated with lower all-cause survival after controlling for race, age, tumor characteristics, and treatment (HR, 1.33; 95% CI, 1.07–1.67). Hypertension alone explained 30.3% of racial disparity in all-cause survival	Hypertension is an independent predictor of the survival disparity between Black and White survivors of invasive breast cancer
Rugo, 2013 <sup>127</sup> Multicenter (United States) White n=793 Black n=126 Median follow-up: 27 mo	Metastatic HER2+ breast cancer treated with trastuzumab	Prospective cohort study measuring cardiac safety events as well as progression-free and overall survival	Higher incidence <sup>a</sup> of cardiac safety events among Black patients with diabetes, hypertension, or CVD who were treated with trastuzumab in comparison to White patients with the same conditions: 3/15 (20%) Black vs 4/48 (8.3%) White patients with diabetes; 2/14 (14.2%) Black vs 2/29 (6.9%) White patients with hypertension; 5/36 (13.9%) Black/African American vs 12/117 (10.3%) White patients with any CVD	More Black patients with HER2+ breast cancer and cardiovascular risk factors (diabetes, hypertension) or CVD experienced cardiotoxicity following treatment with trastuzumab compared with White counterparts with the same conditions, although statistical significance was not reported
Baron, 2014 <sup>128</sup> University of Maryland Black n=48 White n=25 Hispanic/Latinx or API n=3 Follow-up: every 3 mo up to 12 mo after treatment (mean not reported)	Stage I to IV HER2+ breast cancer treated with trastuzumab	Retrospective cohort study measuring decline in LVEF over first year after treatment	More Black patients than White patients experienced decreased LVEF (17 vs 4 patients of total 21, <i>P</i> <0.05). No significant difference in cardiovascular risk factors or adjunctive treatment with anthracycline or radiation between patients with and without LVEF decline	Black patients with HER2+ breast cancer developed reduced ejection fraction following treatment with trastuzumab more frequently than White patients
Berkman, 2014 <sup>129</sup> Multicenter (United States), SEER White n=54 518 Other <sup>a</sup> n=6487 Black n=6113 Unknown n=401 Follow up: 1, 5, 10, 20 y post-diagnosis (mean not reported)	DCIS, any treatment	Retrospective cohort study comparing cardiovascular, breast cancer, and all-cause mortalities	Higher hazard of cardiovascular death in Black survivors of breast cancer compared with White survivors breast cancer with DCIS at ages 40–49, 50–59, and 60–69 (HR, 14.99; 95% CI, 5.39–41.67; HR, 6.43; 95% CI, 3.61–11.46; HR, 2.26; 95% CI, 1.63–3.14). No significant difference in hazard of cardiovascular death between Black and White patients 70 y and older	Black survivors of DCIS had a higher risk of mortality from CVD, with a more pronounced effect in younger patients
Solanki, 2016 <sup>130</sup> Multicenter (United States), SEER White n=462 005 API n=44 531 Follow-up: Through 2012 for diagnoses between 1991 and 2001 (mean not reported)	Stage I to III invasive breast cancer, any treatment	Retrospective cohort study comparing cardiovascular, breast cancer, and all-cause mortalities	Mortality rates varied by national origin. Filipino, Asian Indian and Pakistani, and Pacific Islander groups had a risk of cardiovascular mortality similar to White women. Hawaiian women had a higher risk of cardiovascular mortality (HR, 1.43; 95% CI, 1.17–1.75) compared with White women. US-born API survivors of breast cancer had higher risk of cardiovascular mortality (HR, 1.29; 95% CI, 1.08–1.54) compared with immigrant API survivors of breast cancer	Despite reports of lower mortality risks among API patients in aggregate, risks of cardiovascular mortality among API survivors of breast cancer vary according to national origin and immigration status

(Continued)

**Table 2. Continued**

Author, setting, sample*, follow-up	Diagnosis/treatment	Study design	Results	Conclusions
Litvak, 2018 <sup>31</sup> Sidney Kimmel Cancer Center, Johns Hopkins White n=157 Black n=59 Median follow-up: 5.2 y	Stage I to III HER2+ breast cancer treated with trastuzumab	Retrospective cohort study measuring decline in LVEF and rates of incomplete therapy	Higher 1-y probability of LVEF decline among Black women (24%, 95% CI, 12–34%) in comparison to White women (7%, 95% CI, 3–11%). Race was significant predictor of cardiotoxicity even after controlling for patient age, disease state, receipt of anthracycline, and presence of other cardiovascular risk factors (HR, 2.73; 95% CI, 1.24–6.01, P=0.012). Black patients had greater probability of incomplete therapy compared with White patients (OR, 4.61; 95% CI, 1.70–13.07; P=0.002). High correlation was observed between cardiotoxicity and incomplete therapy (96% concordance)	Black survivors of HER2+ breast cancer had higher risk of cardiotoxicity following treatment with trastuzumab even after controlling for age, disease state, and cardiovascular risk factors, with cardiotoxicity correlating with more frequent treatment cessation
Troeschel, 2019 <sup>32</sup> Multicenter (United States), SEER White n=364,025 Black n=43,562 Median follow-up: 6.7 y	Invasive breast cancer, any treatment	Retrospective cohort study comparing incidence and hazard of CVD mortality	20-y cumulative incidence of CVD mortality was higher in Black patients compared with White patients in groups age <69 (13.3% vs 8.9%). Hazard of CVD mortality was 173% higher in Black patients age <55 (HR, 2.73; 95% CI, 2.42–3.08) and 72% higher in age 55–68 compared with White patients (HR, 1.72; 95% CI, 1.60–1.85). Similar hazard detected among women 69 y and older	Black survivors of breast cancer had a higher risk of mortality from CVD, with a more pronounced effect in younger patients
Collin, 2020 <sup>33</sup> Georgia Cancer Registry White n=4923 Black n=3580 Follow-up: Until 2018 for diagnoses between 2010 and 2014 (mean not reported)	Invasive breast cancer, any treatment	Prospective cohort study comparing hazards of CVD mortality following treatment with hormone therapy or chemotherapy	Hormone therapy was associated with a nonsignificant higher hazard of CVD mortality among Black women (HR, 2.18; 95% CI, 0.78–6.12) but not in White women (HR, 0.66; 95% CI, 0.39–1.13). Chemotherapy was associated with a nonsignificant higher hazard among Black (HR, 1.45; 95% CI, 0.60–3.51) but not among White women (HR, 0.86; 95% CI, 0.40–1.88). Neither result reached statistical significance	Treatment with hormone therapy or chemotherapy may contribute to the CVD mortality disparities between Black and White survivors of breast cancer, but results in this study did not reach statistical significance

API indicates Asian and Pacific Islander; CVD, cardiovascular disease; DCIS, ductal carcinoma in situ; HR, hazard ratio; LVEF, left ventricle ejection fraction; OR, odds ratio, and SEER, Surveillance, Epidemiology and End Results (national cancer registry).

\*For brevity, patients described in the referenced studies as Black, African American, African-American, or Non-Hispanic Black are referred to as Black. Patients described as non-Hispanic White in the referenced studies are referred to as White.

<sup>†</sup>Measures of statistical significance not reported.

<sup>‡</sup>Study authors included a category of “Other” but did not provide additional details about the participant races or ethnicities. References: 125–133.

significantly higher among Black patients in comparison to White patients in age groups under 69, with cumulative incidences reported up to time points of 25 years. There was no difference in CVD-related mortality between Black and White patients 69 years and older. After accounting for the influence of other causes of death on CVD-related mortality, Black patients were observed to have 173% higher hazard of CVD-related mortality for ages <55 years and 72% higher hazard of CVD-related mortality for ages 55 to 68. This difference in mortality between White and Black patients with breast cancer is greater than the difference in CVD-related mortality between Black and White patients in the general population. Similar results were obtained in a different retrospective cohort study using SEER data from patients with ductal carcinoma in situ.<sup>129</sup> This survival disparity may be due partially to differences in preexisting cardiovascular risk factors: in a regional retrospective cohort study among 1254 patients with invasive breast cancer, hypertension was an independent predictor of the survival disparity between Black American and White survivors.<sup>126</sup>

Preliminary research suggests that cardiovascular risk among API patients with breast cancer varies by national origin and immigration status (included in Table 2 and summarized in Figure 1). A retrospective cohort study used SEER registry data to investigate mortality differences among 44 531 API patients with invasive breast cancer in comparison to 462 005 White counterparts.<sup>130</sup> Although API patients in aggregate had lower risks of CVD-related mortality, breast cancer mortality, and all-cause mortality, Hawaiian women had a higher hazard of cardiovascular mortality compared with White patients. Pacific Islander women had elevated risk for breast cancer-specific and all-cause mortalities in comparison to White women. The grouping of API patients together in clinical research may mask such underlying disparities, and groups at higher risk such as Hawaiian and Pacific Islander women may need additional screening. Interestingly, US-born API survivors of breast cancer were found to have a higher hazard of cardiovascular mortality when compared with immigrant API survivors of breast cancer. The effects of acculturation and associated lifestyle changes likely contribute to the higher risk of CVD among API women born in the United States.

## SOCIOECONOMIC DISPARITIES AMONG PATIENTS WITH CANCER

There are even fewer published studies on socioeconomic disparities in treatment-associated cardiotoxicity, although preliminary data demonstrate the impact

of health insurance status, poverty, and geographic region (summarized in Figure 1). Among adolescent and young adult (AYA) survivors of various types of cancer, Black race as well as lower SES have been associated independently with increased risks of CVD and CVD-associated mortality. In a retrospective cohort study of 79 167 survivors of AYA cancer ages 15 to 39 years old, Black patients had an elevated risk of CVD in comparison to White patients (hazard ratio [HR], 1.55; 95% CI, 1.33–1.81).<sup>135</sup> Cancer types included breast cancer, thyroid cancer, melanoma, testicular cancer, Hodgkin lymphoma, non-Hodgkin lymphoma, acute lymphoid leukemia, acute myeloid leukemia, soft tissue sarcoma, bone sarcoma, colorectal cancer, central nervous system cancer, cervical cancer, and ovarian cancer. Additionally, uninsured or publicly insured patients had an elevated risk of CVD in comparison to patients with private or military insurance (HR, 1.78; 95% CI, 1.61–1.96), and those who resided in lower SES neighborhoods had increased risks of CVD in comparison to patients living in the highest SES neighborhoods (HR, 1.66; 95% CI, 1.42–1.93).<sup>135</sup> An even larger retrospective cohort study from SEER registry data among 242 940 AYA women and 158 347 AYA men with a broad spectrum of primary malignancies found that increasingly severe degrees of poverty were associated with increased risks of CVD mortality even after adjusting for race and ethnicity (HR, 1.18; 95% CI, 1.01–1.38 for quartile 2; HR, 1.37; 95% CI, 1.18–1.60 for quartile 3; HR, 1.41; 95% CI, 1.17–1.70 for quartile 4 below poverty line for women; HR, 1.11; 95% CI, 0.96–1.29 for quartile 2; HR, 1.35; 95% CI, 1.16–1.57 for quartile 3; and HR, 1.31; 95% CI, 1.09–1.58 for quartile 4 below the poverty line for men).<sup>136</sup> Additionally, education below high school levels was associated with increased risks of CVD mortality among both AYA women and men with cancer even after adjusting for race and ethnicity.<sup>136</sup> Geographic region was also found to have a significant impact: AYA patients residing in the South had increased risks of CVD mortality in comparison to patients living in the Northeast (HR, 1.40; 95% CI, 1.15–1.71 for AYA women and HR, 1.42; 95% CI, 1.16–1.73 for AYA men); no other regions demonstrated significant differences.<sup>136</sup>

## SEX AND GENDER DISPARITIES AMONG PATIENTS WITH CANCER

There is a notable paucity of published studies on cardiotoxicity outcome disparities according to sex and gender (Table 3<sup>137–139</sup> and summarized in Figure 1). A retrospective cohort study of 6493 survivors of various childhood cancers treated with anthracycline therapy found that risk factors for early cardiotoxicity included female sex (relative risk, 1.89; 95% CI, 1.28–2.78,

$P < 0.01$ ) and Black race and ethnicity (relative risk, 1.68; 95% CI, 1.06–2.66,  $P = 0.03$ ).<sup>138</sup> Notably, White patients made up 75% of this study. A smaller retrospective cohort study of pediatric survivors of cancer treated with doxorubicin showed that 45% of female patients developed depressed contractility compared with 12% of male patients.<sup>137</sup> This disparate cardiotoxicity incidence widened with higher cumulative doses of doxorubicin. Similarly, a recent meta-analysis of 10 observational studies among patients receiving radiation for Hodgkin lymphoma discovered sex and gender disparities for cardiovascular mortality.<sup>139</sup> Women had an aggregate incidence of life-threatening cardiovascular events and mortality almost 4 times higher than men. However, this study did not match male and female patients by radiation therapy dose, age of cancer diagnosis, or method of cardiotoxicity diagnosis. Additionally, none of the 3 mentioned studies presented data on preexisting CVD or risk factors, nor did they control for other covariates such as SES or healthcare access.

## STRATEGIES AND FUTURE DIRECTIONS

We provide a visual summary of our findings on outcome disparities according to race and ethnicity, socioeconomic status, and sex and gender in treatment-associated cardiotoxicity with a depiction of contributing etiologies (Figure 1). The studies reviewed here have prominent limitations—most notably, size and the lack of controlling for relevant covariates. Many of these studies did not account for variables such as disease stage, preexisting cardiovascular risk factors, or CVD. Most studies did not control for socioeconomic factors, geographic factors, or other social variables.

Further research is necessary to determine to what degree the observed disparities among Black women with breast cancer exist within other cancer types, as well as among other racial and ethnic groups including diverse API, Hispanic/Latinx, and AIAN communities. Additional research is needed to examine the interactions of individual and neighborhood SES with other social determinants of health as well as broader dynamics of structural racism within the context of CVD among patients with cancer. Further research is required to elucidate the conflicting difference in sex and gender disparities among women described here in comparison to prior literature that cites worsened outcomes in men. Additionally, future investigations on sex and gender disparities should be broadened to include other groups subject to sex- and gender-based discrimination, including lesbian, gay, bisexual, transgender, queer (or questioning), asexual (or allied), and intersex patients.

The intersection of these different disparities is deeply worrisome for potential compounding effects on disparities in cardiotoxicity and extreme vulnerability to inequity. This should be explored further not only for Black women with cancer but also for Hispanic/Latinx and API women (with attention paid to acculturation effects) as well as AIAN women. It is important to note that although AIAN communities have the highest risk for CVD in the general population, there are no available studies on cardiotoxicity among this population. In addition, younger women who receive oncologic therapy with elevated risk of atherosclerotic disease<sup>70</sup> should be considered in the context of the increasing rates of coronary artery disease among the general population of young women ages 35 to 44 years old.<sup>12</sup> Given that the culprit contributing variables to general cardiovascular disparities extend beyond socioeconomic factors alone and include other social determinants of health as well as upstream structural racism and sexism<sup>10,13,43,55</sup> (Figure 1), future research in cardio-oncology must also investigate the relationship of these factors to cardiotoxicity outcomes.

Based on our review of the literature and current practices, we propose actionable strategies within clinical practice, investigative research, and community engagement to reduce disparities in cardio-oncology (Figure 2). In addition to developing standardized protocols for cardiovascular screening, risk factor optimization, and cardiotoxicity treatment per American Society of Clinical Oncology and American Heart Association guidelines, we propose developing effective tools to assess patient social and structural vulnerabilities at the time of care establishment in order to identify patients in need of additional interdisciplinary resources. Leveraging telehealth services from the COVID-19 era may improve healthcare access for some patients without immediate access to cardio-oncology providers or with personal or structural circumstances that challenge regular care. However, creative and informed approaches will be needed for populations with limited resources, as preliminary research on telehealth use during the COVID-19 pandemic demonstrates that patients of color, older patients, patients who do not speak English, and patients from disadvantaged backgrounds have participated less in telemedicine and virtual video visits.<sup>140,141</sup> Additionally, we recommend longitudinal implicit bias training for all healthcare workers to decrease the interference of implicit bias with equitable care and recommend peer review of practice patterns to reduce substandard or inappropriate treatment of under-represented minorities and women.

Among research-based strategies, we call for an expansion of health disparities research as discussed previously to the level of rigorous large-scale studies investigating different types of disparities among

**Table 3. Cardiotoxicity Disparities by Sex/Gender Among Patients Treated With Anthracyclines or Radiation**

Author, setting, sample, follow-up	Diagnosis/treatment	Study design	Results	Conclusions
Lipshultz, 1995 <sup>137</sup> Boston Female sex, n=62 Male sex, n=58 Mean time since therapy completion: 8.1 y	Childhood acute lymphoblastic leukemia or osteogenic sarcoma treated with doxorubicin	Retrospective cohort study measuring cardiac stress velocity in comparison to data from 296 normal subjects	45% of female patients (28 of 62) had depressed contractility more than 2 SDs below normal as compared with 12% of male patients (7 of 58; P<0.001). Interactive relation between sex and cumulative dose with the higher the cumulative dose, the greater the difference in contractility between female and male patients	Female patients were more likely to have depressed left ventricular contractility after doxorubicin than male patients, with more disparate frequencies observed with higher cumulative doses
Krischer, 1997 <sup>138</sup> Multicenter (United States) Pediatric patients n=6493 Mean follow-up: not specified	Leukemia, lymphoma (Hodgkin and non-Hodgkin), sarcoma, neuroblastoma, brain tumors treated with anthracyclines	Retrospective cohort study measuring event-free survival until cardiotoxic event	Increased risk of early cardiotoxicity among female pediatric patients (relative risk, 1.89; 95% CI, 1.28–2.78, P<0.01) in multivariate analysis.	Female patients treated with anthracyclines had a higher risk of early cardiotoxicity in comparison to male patients.
Khalid, 2020 <sup>139</sup> Multicenter (North America, Europe)	Hodgkin lymphoma treated with radiation	Systematic review evaluating incidence of cardiovascular events and cardiovascular mortality among 10 observational studies	Higher aggregate incidence of cardiovascular events and cardiovascular mortality in women compared with men (OR, 3.74; 95% CI, 2.44–5.72, P<0.001) with higher all-cause mortality in women compared with men (OR, 1.94; 95% CI, 1.10–3.44, P<0.023)	Women with Hodgkin lymphoma who received radiation had high risk of cardiovascular events or mortality in comparison to men

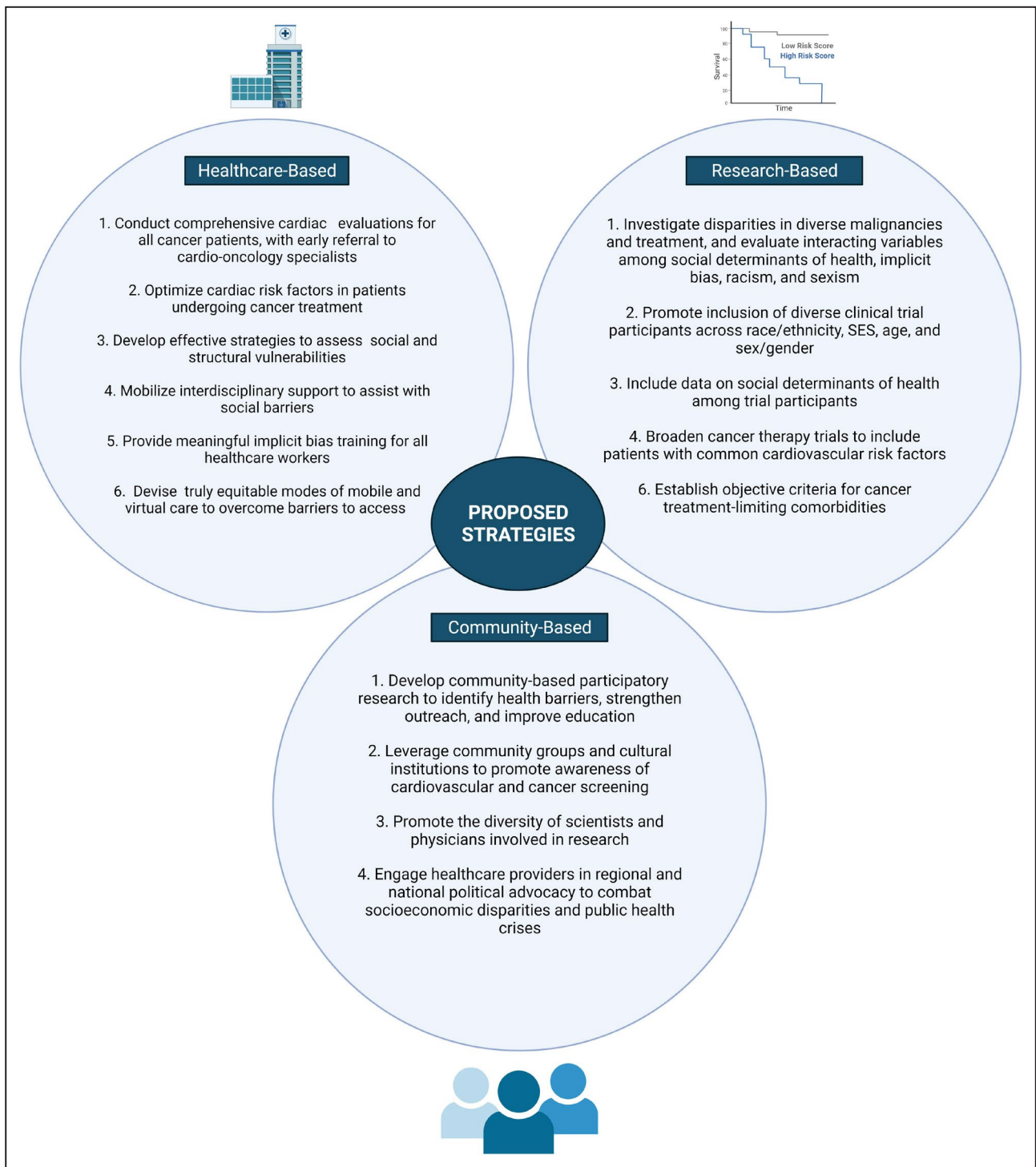
OR indicates odds ratio.  
References: 137–139.

diverse types of cancer and cardiotoxic treatment. These disparities should be evaluated in the context of comprehensive social determinants of health and forces of systemic discrimination. Encouragingly, the American Heart Association recently solicited research on cardio-oncology disparities, with the aim to devise a disparities research network focused on collaborative basic, clinical, and population-based investigations.<sup>142</sup> In addition to research expansion, we urge the robust recruitment of underrepresented groups to clinical trials for cancer therapeutics and cardioprotective agents, inclusive of patients with known cardiovascular comorbidities. In both health disparities studies and therapy-based clinical trials, we recommend that data on social determinants of health be collected among all study participants. To inform these investigations, cultural and structural competency training should be pursued to improve clinician and scientist understanding of health determinants.

These strategies should be partnered with community initiatives to improve care access and patient outcomes. Initiatives to consider include community-based participatory research to explore barriers to cardio-oncologic care as well as community group collaborations to improve outreach to community members. Ongoing efforts should also be made to promote the diverse representation of clinicians and scientists involved in cardio-oncology clinical care and research. Although addressing broader system-level policies requires collaboration among many political, legal, and social groups, there is also a critical need for physician political advocacy in conversations on public health crises including poverty, housing insecurity, insufficient health insurance, and structural racism.

The general cardiologist has an important role in the collaborative work of reducing cardio-oncology disparities. General cardiology practitioners are needed to help screen for CVD, aggressively manage cardiovascular risk factors, and refer early to cardio-oncologists when possible. In areas where cardio-oncology providers are not available, general cardiologists should assume the collaborative role with a patient's oncology team. This requires diligent screening practices as well as an accurate understanding of which patients are most at risk for CVD and treatment-associated cardiotoxicity. Individual cardiology and oncology providers are not able to single-handedly change social or structural determinants of health, but they can commit to some of the clinical, research, and community strategies offered here to help reduce disparities.

Disparities in CVD and CVD-related mortality will be an important area of study as the landscape of cancer treatment modalities continues to evolve. By further



**Figure 2. Strategies to reduce inequity in cardio-oncology.** Strategies that can be taken by individual clinicians, scientists, and provider groups to reduce outcome disparities and improve cardiovascular and cancer-associated health equity in the cardio-oncology population. SES indicates socioeconomic status. Created by biorender.com.

elucidating disparate cardiotoxicity outcomes among patients with cancer, we may improve our understanding of the relationship between cancer and cardiovascular disparities while guiding future research and

equity-focused care practices within cardio-oncology. Eradicating cardio-oncologic disparities among under-resourced communities and minority groups including Black populations, who carry the brunt of both cancer

Downloaded from <http://ahajournals.org> by on December 16, 2021

mortality and cardiac disease, is a matter of compelling urgency—and ultimately, a matter of social justice. The improvement of cardiovascular health for all patients with cancer is critical for patient survival, quality of life, and health equity.

## ARTICLE INFORMATION

### Affiliations

Department of Medicine, University of California Los Angeles, Los Angeles, CA (R.E.O.); UCLA Cardio-Oncology Program, Division of Cardiology, Department of Medicine, University of California at Los Angeles, CA (E.H.Y.); and Center for Cancer Research, National Cancer Institute, Bethesda, MD (M.L.A.).

### Sources of Funding

None.

### Disclosures

Dr Yang receives research funding from CSL Behring (nonrelevant). The remaining authors have no disclosures to report.

### Supplementary Material

Table S1

## REFERENCES

- Siegel RL, Miller KD, Jemal A. Cancer statistics, 2020. *CA Cancer J Clin*. 2020;70:7–30. doi: 10.3322/caac.21590
- Siegel RL, Miller KD, Jemal A. Cancer statistics, 2019. *CA Cancer J Clin*. 2019;69:7–34. doi: 10.3322/caac.21551
- Virani SS, Alonso A, Benjamin EJ, Bittencourt MS, Callaway CW, Carson AP, Chamberlain AM, Chang AR, Cheng S, Delling FN, et al. Heart disease and stroke statistics-2020 update: a report from the American Heart Association. *Circulation*. 2020;141:e139–e596. doi: 10.1161/CIR.0000000000000757
- Miller KD, Nogueira L, Mariotto AB, Rowland JH, Yabroff KR, Alfano CM, Jemal A, Kramer JL, Siegel RL. Cancer treatment and survivorship statistics, 2019. *CA Cancer J Clin*. 2019;69:363–385. doi: 10.3322/caac.21565
- Sengupta R, Honey K. AACR Cancer Disparities Progress Report 2020: achieving the bold vision of health equity for racial and ethnic minorities and other underserved populations. *Cancer Epidemiol Biomarkers Prev*. 2020;29:1843. doi: 10.1158/1055-9965.EPI-20-0269
- Alvidrez J, Castille D, Laude-Sharp M, Rosario A, Tabor D. The National Institute on Minority Health and Health Disparities Research framework. *Am J Public Health*. 2019;109:S16–S20. doi: 10.2105/AJPH.2018.304883
- Ellis L, Canchola AJ, Spiegel D, Ladabaum U, Haile R, Gomez SL. Racial and ethnic disparities in cancer survival: the contribution of tumor, sociodemographic, institutional, and neighborhood characteristics. *J Clin Oncol*. 2018;36:25–33. doi: 10.1200/JCO.2017.74.2049
- Zavala VA, Bracci PM, Carethers JM, Carvajal-Carmona L, Coggins NB, Cruz-Correa MR, Davis M, de Smith AJ, Dutil J, Figueiredo JC, et al. Cancer health disparities in racial/ethnic minorities in the United States. *Br J Cancer*. 2021;124:315–332. doi: 10.1038/s41416-020-01038-6
- Carnethon MR, Pu J, Howard G, Albert MA, Anderson CAM, Bertoni AG, Mujahid MS, Palaniappan L, Taylor HA Jr, Willis M, et al. Cardiovascular health in African Americans: a scientific statement from the American Heart Association. *Circulation*. 2017;136:e393–e423. doi: 10.1161/CIR.0000000000000534
- Havraneck EP, Mujahid MS, Barr DA, Blair IV, Cohen MS, Cruz-Flores S, Davey-Smith G, Dennison-Himmelfarb CR, Lauer MS, Lockwood DW, et al. Social determinants of risk and outcomes for cardiovascular disease: a scientific statement from the American Heart Association. *Circulation*. 2015;132:873–898. doi: 10.1161/CIR.0000000000000228
- Mensah GA, Cooper RS, Siega-Riz AM, Cooper LA, Smith JD, Brown CH, Westfall JM, Ofili EO, Price LN, Artega S, et al. Reducing cardiovascular disparities through community-engaged implementation research: a National Heart, Lung, and Blood Institute Workshop Report. *Circ Res*. 2018;122:213–230. doi: 10.1161/CIRCRESAHA.117.312243
- Mosca L, Barrett-Connor E, Wenger NK. Sex/gender differences in cardiovascular disease prevention: what a difference a decade makes. *Circulation*. 2011;124:2145–2154. doi: 10.1161/CIRCULATIONAHA.110.968792
- Churchwell K, Elkind MSV, Benjamin RM, Carson AP, Chang EK, Lawrence W, Mills A, Odom TM, Rodriguez CJ, Rodriguez F, et al. Call to action: structural racism as a fundamental driver of health disparities: a presidential advisory from the American Heart Association. *Circulation*. 2020;142:e454–e468. doi: 10.1161/CIR.0000000000000936
- Bailey ZD, Feldman JM, Bassett MT. How structural racism works—racist policies as a root cause of U.S. racial health inequities. *N Engl J Med*. 2021;384:768–773. doi: 10.1056/NEJMms2025396
- Webb Hooper M, Napoles AM, Perez-Stable EJ. COVID-19 and racial/ethnic disparities. *JAMA*. 2020;323:2466–2467. doi: 10.1001/jama.2020.8598
- Bibbins-Domingo K. This time must be different: disparities during the COVID-19 pandemic. *Ann Intern Med*. 2020;173:233–234. doi: 10.7326/M20-2247
- Wang Q, Berger NA, Xu R. Analyses of risk, racial disparity, and outcomes among US patients with cancer and COVID-19 infection. *JAMA Oncol*. 2021;7:220–227. doi: 10.1001/jamaoncol.2020.6178
- Campia U, Moslehi JJ, Amiri-Kordestani L, Barac A, Beckman JA, Chism DD, Cohen P, Groarke JD, Herrmann J, Reilly CM, et al. Cardio-oncology: vascular and metabolic perspectives: a scientific statement from the American Heart Association. *Circulation*. 2019;139:e579–e602. doi: 10.1161/CIR.0000000000000641
- Blaes AH, Thavendiranathan P, Moslehi J. Cardiac toxicities in the era of precision medicine: underlying risk factors, targeted therapies, and cardiac biomarkers. *Am Soc Clin Oncol Educ Book*. 2018;38:764–774. doi: 10.1200/EDBK\_208509
- Blaes A, Prizment A, Koene RJ, Konety S. Cardio-oncology related to heart failure: common risk factors between cancer and cardiovascular disease. *Heart Fail Clin*. 2017;13:367–380. doi: 10.1016/j.hfc.2016.12.006
- de Haas EC, Oosting SF, Lefrandt JD, Wolffenbuttel BH, Sleijfer DT, Gietema JA. The metabolic syndrome in cancer survivors. *Lancet Oncol*. 2010;11:193–203. doi: 10.1016/S1470-2045(09)70287-6
- Albini A, Pennesi G, Donatelli F, Cammarota R, De Flora S, Noonan DM. Cardiotoxicity of anticancer drugs: the need for cardio-oncology and cardio-oncological prevention. *J Natl Cancer Inst*. 2010;102:14–25. doi: 10.1093/jnci/djp440
- Yeh ET, Bickford CL. Cardiovascular complications of cancer therapy: incidence, pathogenesis, diagnosis, and management. *J Am Coll Cardiol*. 2009;53:2231–2247. doi: 10.1016/j.jacc.2009.02.050
- Patnaik JL, Byers T, DiGuiseppi C, Dabelea D, Denberg TD. Cardiovascular disease competes with breast cancer as the leading cause of death for older females diagnosed with breast cancer: a retrospective cohort study. *Breast Cancer Res*. 2011;13:R64. doi: 10.1186/bcr2901
- Armenian SH, Lacchetti C, Barac A, Carver J, Constine LS, Denduluri N, Dent S, Douglas PS, Durand J-B, Ewer M, et al. Prevention and monitoring of cardiac dysfunction in survivors of adult cancers: American Society of Clinical Oncology Clinical Practice Guideline. *J Clin Oncol*. 2017;35:893–911. doi: 10.1200/JCO.2016.70.5400
- Armenian SH, Sun CL, Shannon T, Mills G, Francisco L, Venkataraman K, Wong FL, Forman SJ, Bhatia S. Incidence and predictors of congestive heart failure after autologous hematopoietic cell transplantation. *Blood*. 2011;118:6023–6029. doi: 10.1182/blood-2011-06-358226
- Romond EH, Jeong J-H, Rastogi P, Swain SM, Geyer CE Jr, Ewer MS, Rathi V, Fehrenbacher L, Brufsky A, Azar CA, et al. Seven-year follow-up assessment of cardiac function in NSABP B-31, a randomized trial comparing doxorubicin and cyclophosphamide followed by paclitaxel (ACP) with ACP plus trastuzumab as adjuvant therapy for patients with node-positive, human epidermal growth factor receptor 2-positive breast cancer. *J Clin Oncol*. 2012;30:3792–3799. doi: 10.1200/JCO.2011.40.0010
- Pinder MC, Duan Z, Goodwin JS, Hortobagyi GN, Giordano SH. Congestive heart failure in older women treated with

- adjuvant anthracycline chemotherapy for breast cancer. *J Clin Oncol*. 2007;25:3808–3815. doi: 10.1200/JCO.2006.10.4976
29. Advani PP, Ballman KV, Dockter TJ, Colon-Otero G, Perez EA. Long-term cardiac safety analysis of NCCTG N9831 (Alliance) adjuvant trastuzumab trial. *J Clin Oncol*. 2016;34:581–587. doi: 10.1200/JCO.2015.61.8413
  30. Prasad P, Branch M, Asemota D, Elsayed R, Addison D, Brown S-A. Cardio-oncology preventive care: racial and ethnic disparities. *Curr Cardiovasc Risk Rep*. 2020;14:18. doi: 10.1007/s12170-020-00650-8
  31. Fazal M, Malisa J, Rhee J-W, Witteles RM, Rodriguez F. Racial and ethnic disparities in cardio-oncology. *JACC CardioOncol*. 2021;3:201–204. doi: 10.1016/j.jacc.2021.05.001
  32. Singh GK, Jemal A. Socioeconomic and racial/ethnic disparities in cancer mortality, incidence, and survival in the United States, 1950–2014: over six decades of changing patterns and widening inequalities. *J Environ Public Health*. 2017;2017:2819372.
  33. Ward E, Jemal A, Cokkinides V, Singh GK, Cardinez C, Ghafoor A, Thun M. Cancer disparities by race/ethnicity and socioeconomic status. *CA Cancer J Clin*. 2004;54:78–93. doi: 10.3322/canjclin.54.2.78
  34. Singh GK, Miller BA, Hankey BF, Edwards BK. *Area Socioeconomic Variations in U.S. Cancer Incidence, Mortality, Stage, Treatment, and Survival, 1975–1999*. Bethesda, Maryland: National Cancer Institute; 2003.
  35. Shavers VL, Brown ML. Racial and ethnic disparities in the receipt of cancer treatment. *J Natl Cancer Inst*. 2002;94:334–357. doi: 10.1093/jnci/94.5.334
  36. Chabner BA. Racism and cancer care: a call for recognition and reform. *Oncologist*. 2020;25:729. doi: 10.1634/theoncologist.2020-0752
  37. Speaking up against inequity and racism. *Nat Cancer*. 2020;1(6):563–564. doi: 10.1038/s43018-020-0091-x
  38. Mauvais-Jarvis F, Bairey Merz N, Barnes PJ, Brinton RD, Carrero J-J, DeMeo DL, De Vries GJ, Epperson CN, Govindan R, Klein SL, et al. Sex and gender: modifiers of health, disease, and medicine. *Lancet*. 2020;396:565–582. doi: 10.1016/S0140-6736(20)31561-0
  39. Rodriguez CJ, Allison M, Daviglus ML, Isasi CR, Keller C, Leira EC, Palaniappan L, Piña IL, Ramirez SM, Rodriguez B, et al. Status of cardiovascular disease and stroke in Hispanics/Latinos in the United States: a science advisory from the American Heart Association. *Circulation*. 2014;130:593–625. doi: 10.1161/CIR.0000000000000071
  40. Palaniappan LP, Araneta MRG, Assimes TL, Barrett-Connor EL, Carnethon MR, Criqui MH, Fung GL, Narayan KMV, Patel H, Taylor-Piliae RE, et al. Call to action: cardiovascular disease in Asian Americans: a science advisory from the American Heart Association. *Circulation*. 2010;122:1242–1252. doi: 10.1161/CIR.0b013e3181f22af4
  41. Breathett K, Sims M, Gross M, Jackson EA, Jones EJ, Navas-Acien A, Taylor H, Thomas KL, Howard BV; American Heart Association Council on E. Cardiovascular health in American Indians and Alaska Natives: a scientific statement from the American Heart Association. *Circulation*. 2020;141:e948–e959. doi: 10.1161/CIR.00000000000000773
  42. Sims M, Kershaw KN, Breathett K, Jackson EA, Lewis LM, Mujahid MS, Suglia SF; American Heart Association Council on E, Prevention, Council on Quality of C. Importance of housing and cardiovascular health and well-being: a scientific statement from the American Heart Association. *Circ Cardiovasc Qual Outcomes*. 2020;13:e000089. doi: 10.1161/HCQ.0000000000000089
  43. Diaz CL, Shah NS, Lloyd-Jones DM, Khan SS. State of the nation's cardiovascular health and targeting health equity in the United States: a narrative review. *JAMA Cardiol*. 2021;6:963. doi: 10.1001/jamacardio.2021.1137
  44. Mensah GA, Goff DC, Gibbons GH. Cardiovascular mortality differences—place matters. *JAMA*. 2017;317:1955–1957. doi: 10.1001/jama.2017.4168
  45. Mujahid MS, Diez Roux AV, Shen M, Gowda D, Sanchez B, Shea S, Jacobs DR Jr, Jackson SA. Relation between neighborhood environments and obesity in the Multi-Ethnic Study of Atherosclerosis. *Am J Epidemiol*. 2008;167:1349–1357. doi: 10.1093/aje/kwn047
  46. Williams DR, Lawrence JA, Davis BA. Racism and health: evidence and needed research. *Annu Rev Public Health*. 2019;40:105–125. doi: 10.1146/annurev-publhealth-040218-043750
  47. Phelan JC, Link BG. Is racism a fundamental cause of inequalities in health? *Annu Rev Sociol*. 2015;41:311–330. doi: 10.1146/annurev-soc-073014-112305
  48. Hardeman RR, Murphy KA, Karbeah J, Kozhimannil KB. Naming Institutionalized racism in the public health literature: a systematic literature review. *Public Health Rep*. 2018;133:240–249. doi: 10.1177/0033354918760574
  49. Schulman KA, Berlin JA, Harless W, Kerner JF, Sistrunk S, Gersh BJ, Dubé R, Taleghani CK, Burke JE, Williams S, et al. The effect of race and sex on physicians' recommendations for cardiac catheterization. *N Engl J Med*. 1999;340:618–626. doi: 10.1056/NEJM199902253400806
  50. McNally B, Robb R, Mehta M, Vellano K, Valderrama AL, Yoon PW, Sasson C, Crouch A, Perez AB, Merritt R, et al. Out-of-hospital cardiac arrest surveillance—cardiac arrest registry to enhance survival (CARES), United States, October 1, 2005–December 31, 2010. *MMWR Surveill Summ*. 2011;60:1–19.
  51. Campbell MC, Tishkoff SA. African genetic diversity: implications for human demographic history, modern human origins, and complex disease mapping. *Annu Rev Genomics Hum Genet*. 2008;9:403–433. doi: 10.1146/annurev.genom.9.081307.164258
  52. Tishkoff SA, Reed FA, Friedlaender FR, Ehret C, Ranciaro A, Froment A, Hirbo JB, Awomoyi AA, Bodo J-M, Doumbo O, et al. The genetic structure and history of Africans and African Americans. *Science*. 2009;324:1035–1044. doi: 10.1126/science.1172257
  53. Daviglus ML, Talavera GA, Avilés-Santa ML, Allison M, Cai J, Criqui MH, Gellman M, Giachello AL, Gouskova N, Kaplan RC, et al. Prevalence of major cardiovascular risk factors and cardiovascular diseases among Hispanic/Latino individuals of diverse backgrounds in the United States. *JAMA*. 2012;308:1775–1784. doi: 10.1001/jama.2012.14517
  54. Howard BV, Lee ET, Cowan LD, Devereux RB, Galloway JM, Go OT, Howard WJ, Rhoades ER, Robbins DC, Sievers ML, et al. Rising tide of cardiovascular disease in American Indians. The Strong Heart Study. *Circulation*. 1999;99:2389–2395. doi: 10.1161/01.CIR.99.18.2389
  55. Molix L. Sex differences in cardiovascular health: does sexism influence women's health? *Am J Med Sci*. 2014;348:153–155. doi: 10.1097/MAJ.0000000000000300
  56. Jarvie JL, Foody JM. Recognizing and improving health care disparities in the prevention of cardiovascular disease in women. *Curr Cardiol Rep*. 2010;12:488–496. doi: 10.1007/s11886-010-0135-4
  57. Redfors B. Women are less likely to get secondary prevention medications and cardiac rehabilitation. Expert Analysis, American College of Cardiology. Available at: <https://www.acc.org/latest-in-cardiology/articles/2017/10/30/15/02/women-are-less-likely-to-get-secondary-prevention-medications-and-cr>. Accessed March 31, 2021.
  58. Daugherty SL, Blair IV, Havranek EP, Furniss A, Dickinson LM, Karimkhani E, Main DS, Masoudi FA. Implicit gender bias and the use of cardiovascular tests among cardiologists. *J Am Heart Assoc*. 2017;6:e006872. doi: 10.1161/JAHA.117.006872
  59. Lenneman CG, Sawyer DB. Cardio-oncology: an update on cardiotoxicity of cancer-related treatment. *Circ Res*. 2016;118:1008–1020. doi: 10.1161/CIRCRESAHA.115.303633
  60. Babiker HM, McBride A, Newton M, Boehmer LM, Drucker AG, Gowan M, Cassagnol M, Camenisch TD, Anwer F, Hollands JM. Cardiotoxic effects of chemotherapy: a review of both cytotoxic and molecular targeted oncology therapies and their effect on the cardiovascular system. *Crit Rev Oncol Hematol*. 2018;126:186–200. doi: 10.1016/j.critrevonc.2018.03.014
  61. Shah CP, Moreb JS. Cardiotoxicity due to targeted anticancer agents: a growing challenge. *Ther Adv Cardiovasc Dis*. 2019;13:1753944719843435.
  62. Curigliano G, Cardinale D, Dent S, Criscitiello C, Aseyev O, Lenihan D, Cipolla CM. Cardiotoxicity of anticancer treatments: epidemiology, detection, and management. *CA Cancer J Clin*. 2016;66:309–325. doi: 10.3322/caac.21341
  63. Pai VB, Nahata MC. Cardiotoxicity of chemotherapeutic agents: incidence, treatment and prevention. *Drug Saf*. 2000;22:263–302. doi: 10.2165/00002018-200022040-00002
  64. Trent JC, Patel SS, Zhang J, Araujo DM, Plana JC, Lenihan DJ, Fan D, Patel SR, Benjamin RS, Khakoo AY. Rare incidence of congestive heart failure in gastrointestinal stromal tumor and other sarcoma patients receiving imatinib mesylate. *Cancer*. 2010;116:184–192. doi: 10.1002/cncr.24683
  65. Adams MJ, Hardenbergh PH, Constine LS, Lipshultz SE. Radiation-associated cardiovascular disease. *Crit Rev Oncol Hematol*. 2003;45:55–75. doi: 10.1016/S1040-8428(01)00227-X



66. Raghunathan D, Khilji MI, Hassan SA, Yusuf SW. Radiation-induced cardiovascular disease. *Curr Atheroscler Rep*. 2017;19:22. doi: 10.1007/s11883-017-0658-x
67. Upadhrasta S, Elias H, Patel K, Zheng L. Managing cardiotoxicity associated with immune checkpoint inhibitors. *Chronic Dis Transl Med*. 2019;5:6–14. doi: 10.1016/j.cdtm.2019.02.004
68. Jamal FA, Khaled SK. The cardiovascular complications of chimeric antigen receptor T cell therapy. *Curr Hematol Malig Rep*. 2020;15:130–132. doi: 10.1007/s11899-020-00567-4
69. Moslehi JJ. Cardiovascular toxic effects of targeted cancer therapies. *N Engl J Med*. 2016;375:1457–1467. doi: 10.1056/NEJMra1100265
70. Herrmann J. Vascular toxic effects of cancer therapies. *Nat Rev Cardiol*. 2020;17:503–522. doi: 10.1038/s41569-020-0347-2
71. Herrmann J, Yang EH, Iliescu CA, Cilingiroglu M, Charitakis K, Hakeem A, Toutouzas K, Leeser MA, Grines CL, Marmagkiolis K. Vascular toxicities of cancer therapies: the old and the new—an evolving avenue. *Circulation*. 2016;133:1272–1289. doi: 10.1161/CIRCULATIONAHA.115.018347
72. Herrmann J. Adverse cardiac effects of cancer therapies: cardiotoxicity and arrhythmia. *Nat Rev Cardiol*. 2020;17:474–502. doi: 10.1038/s41569-020-0348-1
73. Curigliano G, Cardinale D, Suter T, Plataniotis G, de Azambuja E, Sandri MT, Criscitiello C, Goldhirsch A, Cipolla C, Roila F, et al. Cardiovascular toxicity induced by chemotherapy, targeted agents and radiotherapy: ESMO Clinical Practice Guidelines. *Ann Oncol*. 2012;23(suppl 7):vii155–vii166. doi: 10.1093/annonc/mds293
74. Mehta LS, Watson KE, Barac A, Beckie TM, Bittner V, Cruz-Flores S, Dent S, Kondapalli L, Ky B, Okwuosa T, et al. Cardiovascular disease and breast cancer: where these entities intersect: a scientific statement from the American Heart Association. *Circulation*. 2018;137:e30–e66. doi: 10.1161/CIR.0000000000000556
75. Armenian SH, Xu L, Ky B, Sun C, Farol LT, Pal SK, Douglas PS, Bhatia S, Chao C. Cardiovascular disease among survivors of adult-onset cancer: a community-based retrospective cohort study. *J Clin Oncol*. 2016;34:1122–1130. doi: 10.1200/JCO.2015.64.0409
76. Meijers WC, de Boer RA. Common risk factors for heart failure and cancer. *Cardiovasc Res*. 2019;115:844–853. doi: 10.1093/cvr/cvz035
77. Bertero E, Ameri P, Maack C. Bidirectional relationship between cancer and heart failure: old and new issues in cardio-oncology. *Card Fail Rev*. 2019;5:106–111. doi: 10.15420/cfr.2019.1.2
78. Angier HE, Marino M, Springer RJ, Schmidt TD, Huguot N, DeVoe JE. The Affordable Care Act improved health insurance coverage and cardiovascular-related screening rates for cancer survivors seen in community health centers. *Cancer*. 2020;126:3303–3311. doi: 10.1002/cncr.32900
79. Alvarez-Cardona JA, Ray J, Carver J, Zaha V, Cheng R, Yang E, Mitchell JD, Stockerl-Goldstein K, Kondapalli L, Dent S, et al. Cardio-oncology education and training: JACC council perspectives. *J Am Coll Cardiol*. 2020;76:2267–2281. doi: 10.1016/j.jacc.2020.08.079
80. Hayek SS, Ganatra S, Lenneman C, Scherrer-Crosbie M, Leja M, Lenihan DJ, Yang E, Ryan TD, Liu J, Carver J, et al. Preparing the cardiovascular workforce to care for oncology patients: JACC review topic of the week. *J Am Coll Cardiol*. 2019;73:2226–2235. doi: 10.1016/j.jacc.2019.02.041
81. Wolfe MK, McDonald NC, Holmes GM. Transportation barriers to health care in the United States: findings from the National Health Interview Survey, 1997–2017. *Am J Public Health*. 2020;110:815–822. doi: 10.2105/AJPH.2020.305579
82. Harris L, Batist G, Belt R, Rovira D, Navari R, Azarnia N, Welles L, Winer E, Group TDS. Liposome-encapsulated doxorubicin compared with conventional doxorubicin in a randomized multicenter trial as first-line therapy of metastatic breast carcinoma. *Cancer*. 2002;94:25–36. doi: 10.1002/cncr.10201
83. van Dalen EC, Michiels EM, Caron HN, Kremer LC. Different anthracycline derivatives for reducing cardiotoxicity in cancer patients. *Cochrane Database Syst Rev*. 2010;5:CD005006.
84. Smith LA, Cornelius VR, Plummer CJ, Levitt G, Verrill M, Canney P, Jones A. Cardiotoxicity of anthracycline agents for the treatment of cancer: systematic review and meta-analysis of randomised controlled trials. *BMC Cancer*. 2010;10:337. doi: 10.1186/1471-2407-10-337
85. Loree JM, Anand S, Dasari A, Unger JM, Gothwal A, Ellis LM, Varadhachary G, Kopetz S, Overman MJ, Raghav K. Disparity of race reporting and representation in clinical trials leading to cancer drug approvals from 2008 to 2018. *JAMA Oncol*. 2019;5:e191870. doi: 10.1001/jamaoncol.2019.1870
86. Kirkham AA, Eves ND, Shave RE, Bland KA, Bovard J, Gelmon KA, Virani SA, McKenzie DC, Stohr EJ, Waburton DER, et al. The effect of an aerobic exercise bout 24 h prior to each doxorubicin treatment for breast cancer on markers of cardiotoxicity and treatment symptoms: a RCT. *Breast Cancer Res Treat*. 2018;167:719–729.
87. Nakamae H, Tsumura K, Terada Y, Nakane T, Nakamae M, Ohta K, Yamane T, Hino M. Notable effects of angiotensin II receptor blocker, valsartan, on acute cardiotoxic changes after standard chemotherapy with cyclophosphamide, doxorubicin, vincristine, and prednisolone. *Cancer*. 2005;104:2492–2498. doi: 10.1002/cncr.21478
88. Cardinale D, Colombo A, Lamantia G, Colombo N, Civelli M, De Giacomo G, Rubino M, Veglia F, Fiorentini C, Cipolla CM. Anthracycline-induced cardiomyopathy: clinical relevance and response to pharmacologic therapy. *J Am Coll Cardiol*. 2010;55:213–220. doi: 10.1016/j.jacc.2009.03.095
89. Cardinale D, Colombo A, Sandri MT, Lamantia G, Colombo N, Civelli M, Martinelli G, Veglia F, Fiorentini C, Cipolla CM. Prevention of high-dose chemotherapy-induced cardiotoxicity in high-risk patients by angiotensin-converting enzyme inhibition. *Circulation*. 2006;114:2474–2481. doi: 10.1161/CIRCULATIONAHA.106.635144
90. Georgakopoulos P, Roussou P, Matsakas E, Karavidas A, Anagnostopoulos N, Marinakis T, Galanopoulos A, Georgiakodis F, Zimeras S, Kyriakidis M, et al. Cardioprotective effect of metoprolol and enalapril in doxorubicin-treated lymphoma patients: a prospective, parallel-group, randomized, controlled study with 36-month follow-up. *Am J Hematol*. 2010;85:894–896. doi: 10.1002/ajh.21840
91. Bosch X, Rovira M, Sitges M, Domenech A, Ortiz-Perez JT, de Caralt TM, Morales-Ruiz M, Perea RJ, Monzo M, Esteve J. Enalapril and carvedilol for preventing chemotherapy-induced left ventricular systolic dysfunction in patients with malignant hemopathies: the OVERCOME trial (preventiOn of left Ventricular dysfunction with Enalapril and caRvedilol in patients submitted to intensive Chemotherapy for the treatment of Malignant hEmopathies). *J Am Coll Cardiol*. 2013;61:2355–2362. doi: 10.1016/j.jacc.2013.02.072
92. Kaya MG, Ozkan M, Gunebakmaz O, Akkaya H, Kaya EG, Akpek M, Kalay N, Dikilitas M, Yarlioglu M, Karaca H, et al. Protective effects of nebivolol against anthracycline-induced cardiomyopathy: a randomized control study. *Int J Cardiol*. 2013;167:2306–2310. doi: 10.1016/j.ijcard.2012.06.023
93. Gulati G, Heck SL, Ree AH, Hoffmann P, Schulz-Menger J, Fagerland MW, Gravdehaug B, von Knobelsdorff-Brenkenhoff F, Bratland A, Storås TH, et al. Prevention of cardiac dysfunction during adjuvant breast cancer therapy (PRADA): a 2 x 2 factorial, randomized, placebo-controlled, double-blind clinical trial of candesartan and metoprolol. *Eur Heart J*. 2016;37:1671–1680.
94. Kalay N, Basar E, Ozdogru I, Er O, Cetinkaya Y, Dogan A, Oguzhan A, Eryol NK, Topsakal R, Ergin A, et al. Protective effects of carvedilol against anthracycline-induced cardiomyopathy. *J Am Coll Cardiol*. 2006;48:2258–2262. doi: 10.1016/j.jacc.2006.07.052
95. Cardinale D, Colombo A, Bacchiani G, Tedeschi I, Meroni CA, Veglia F, Civelli M, Lamantia G, Colombo N, Curigliano G, et al. Early detection of anthracycline cardiotoxicity and improvement with heart failure therapy. *Circulation*. 2015;131:1981–1988. doi: 10.1161/CIRCULATIONAHA.114.013777
96. Pituskin E, Mackey JR, Koshman S, Jassal D, Pitz M, Haykowsky MJ, Pagano JJ, Chow K, Thompson RB, Vos LJ, et al. Multidisciplinary approach to novel therapies in cardio-oncology research (MANTICORE 101-Breast): a randomized trial for the prevention of trastuzumab-associated cardiotoxicity. *J Clin Oncol*. 2017;35:870–877. doi: 10.1200/JCO.2016.68.7830
97. Avila MS, Ayub-Ferreira SM, de Barros Wanderley MR Jr, das Dores Cruz F, Gonçalves Brandão SM, Rigaud VOC, Higuchi-dos-Santos MH, Hajjar LA, Kalli Filho R, Hoff PM, et al. Carvedilol for prevention of chemotherapy-related cardiotoxicity: the CECCY trial. *J Am Coll Cardiol*. 2018;71:2281–2290. doi: 10.1016/j.jacc.2018.02.049
98. Cardinale D, Ciceri F, Latini R, Franzosi MG, Sandri MT, Civelli M, Cucchi G, Menatti E, Mangiavacchi M, Cavina R, et al. Anthracycline-induced cardiotoxicity: a multicenter randomised trial comparing two strategies for guiding prevention with enalapril: the International CardioOncology Society-one trial. *Eur J Cancer*. 2018;94:126–137.
99. Guglin M, Krischer J, Tamura R, Fink A, Bello-Matricaria L, McCaskill-Stevens W, Munster PN. Randomized trial of lisinopril versus carvedilol

- to prevent trastuzumab cardiotoxicity in patients with breast cancer. *J Am Coll Cardiol*. 2019;73:2859–2868.
100. Acar Z, Kale A, Turgut M, Demircan S, Durna K, Demir S, Meric M, Agac MT. Efficiency of atorvastatin in the protection of anthracycline-induced cardiomyopathy. *J Am Coll Cardiol*. 2011;58:988–989. doi: 10.1016/j.jacc.2011.05.025
  101. Seicean S, Seicean A, Plana JC, Budd GT, Marwick TH. Effect of statin therapy on the risk for incident heart failure in patients with breast cancer receiving anthracycline chemotherapy: an observational clinical cohort study. *J Am Coll Cardiol*. 2012;60:2384–2390. doi: 10.1016/j.jacc.2012.07.067
  102. Calvillo-Arguelles O, Abdel-Qadir H, Michalowska M, Billia F, Suntheralingam S, Amir E, Thavendiranathan P. Cardioprotective effect of statins in patients with HER2-positive breast cancer receiving trastuzumab therapy. *Can J Cardiol*. 2019;35:153–159.
  103. Speyer JL, Green MD, Zeleniuch-Jacquotte A, Wernz JC, Rey M, Sanger J, Kramer E, Ferrans V, Hochster H, Meyers M, et al. ICRF-187 permits longer treatment with doxorubicin in women with breast cancer. *J Clin Oncol*. 1992;10:117–127. doi: 10.1200/JCO.1992.10.117
  104. Venturini M, Michelotti A, Del Mastro L, Gallo L, Carnino F, Garrone O, Tibaldi C, Molea N, Bellina RC, Pronzato P, et al. Multicenter randomized controlled clinical trial to evaluate cardioprotection of dexrazoxane versus no cardioprotection in women receiving epirubicin chemotherapy for advanced breast cancer. *J Clin Oncol*. 1996;14:3112–3120. doi: 10.1200/JCO.1996.14.12.3112
  105. Wexler LH, Andrich MP, Venzon D, Berg SL, Weaver-McClure L, Chen CC, Dilsizian V, Avila N, Jarosinski P, Balis FM, et al. Randomized trial of the cardioprotective agent ICRF-187 in pediatric sarcoma patients treated with doxorubicin. *J Clin Oncol*. 1996;14:362–372. doi: 10.1200/JCO.1996.14.2.362
  106. Swain SM, Whaley FS, Gerber MC, Weisberg S, York M, Spicer D, Jones SE, Wadler S, Desai A, Vogel C, et al. Cardioprotection with dexrazoxane for doxorubicin-containing therapy in advanced breast cancer. *J Clin Oncol*. 1997;15:1318–1332. doi: 10.1200/JCO.1997.15.4.1318
  107. Lopez M, Vici P, Di Lauro K, Conti F, Paoletti G, Ferrarioni A, Sciuto R, Giannarelli D, Maini CL. Randomized prospective clinical trial of high-dose epirubicin and dexrazoxane in patients with advanced breast cancer and soft tissue sarcomas. *J Clin Oncol*. 1998;16:86–92. doi: 10.1200/JCO.1998.16.1.86
  108. Lipshultz SE, Rifai N, Dalton VM, Levy DE, Silverman LB, Lipsitz SR, Colan SD, Asselin BL, Barr RD, Clavell LA, et al. The effect of dexrazoxane on myocardial injury in doxorubicin-treated children with acute lymphoblastic leukemia. *N Engl J Med*. 2004;351:145–153. doi: 10.1056/NEJMoa035153
  109. Galetta F, Franzoni F, Cervetti G, Cecconi N, Carpi A, Petrini M, Santoro G. Effect of epirubicin-based chemotherapy and dexrazoxane supplementation on QT dispersion in non-Hodgkin lymphoma patients. *Biomed Pharmacother*. 2005;59:541–544.
  110. Marty M, Espie M, Lombart A, Monnier A, Rapoport BL, Stahlova V; Dexrazoxane Study G. Multicenter randomized phase III study of the cardioprotective effect of dexrazoxane (Cardioxane) in advanced/metastatic breast cancer patients treated with anthracycline-based chemotherapy. *Ann Oncol*. 2006;17:614–622. doi: 10.1093/annonc/mdj134
  111. Sun F, Qi X, Geng C, Li X. Dexrazoxane protects breast cancer patients with diabetes from chemotherapy-induced cardiotoxicity. *Am J Med Sci*. 2015;349:406–412. doi: 10.1097/MAJ.0000000000000432
  112. Tahover E, Segal A, Isacson R, Rosengarten O, Grenader T, Gips M, Cherny N, Heching NI, Mesika L, Catane R, et al. Dexrazoxane added to doxorubicin-based adjuvant chemotherapy of breast cancer: a retrospective cohort study with a comparative analysis of toxicity and survival. *Anticancer Drugs*. 2017;28:787–794. doi: 10.1097/CAD.0000000000000514
  113. Kim IH, Lee JE, Youn HJ, Song BJ, Chae BJ. cardioprotective effect of dexrazoxane in patients with HER2-positive breast cancer who receive anthracycline based adjuvant chemotherapy followed by trastuzumab. *J Breast Cancer*. 2017;20:82–90. doi: 10.4048/jbc.2017.20.1.82
  114. Ganatra S, Nohria A, Shah S, Groarke JD, Sharma A, Venesy D, Patten R, Gunturu K, Zarwan C, Neilan TG, et al. Upfront dexrazoxane for the reduction of anthracycline-induced cardiotoxicity in adults with preexisting cardiomyopathy and cancer: a consecutive case series. *Cardiooncology*. 2019;5:1. doi: 10.1186/s40959-019-0036-7
  115. United States. Congress. House. Committee on Energy and Commerce. Subcommittee on Health and the Environment. *NIH Revitalization Act: hearing before the Subcommittee on Health and the Environment of the Committee on Energy and Commerce, House of Representatives, One Hundred Third Congress, first session, on H.R. 4, a bill to amend the Public Health Service Act*. Washington: U.S. G.P.O.: For sale by the U.S. G.P.O., Supt. of Docs., Congressional Sales Office; 1993.
  116. Woods-Burnham L, Johnson JR, Hooker SE Jr, Bedell FW, Dorff TB, Kittles RA. The role of diverse populations in US clinical trials. *Med*. 2021;2:21–24. doi: 10.1016/j.medj.2020.12.009
  117. Jaiswal J, Halkitis PN. Towards a more inclusive and dynamic understanding of medical mistrust informed by science. *Behav Med*. 2019;45:79–85. doi: 10.1080/08964289.2019.1619511
  118. Thomas SB, Quinn SC. The Tuskegee Syphilis Study, 1932 to 1972: implications for HIV education and AIDS risk education programs in the black community. *Am J Public Health*. 1991;81:1498–1505. doi: 10.2105/AJPH.81.11.1498
  119. Reilly PR. Eugenics and involuntary sterilization: 1907–2015. *Annu Rev Genomics Hum Genet*. 2015;16(1):351–368. doi: 10.1146/annurev-genom-090314-024930
  120. LaVeist TA, Isaac LA, Williams KP. Mistrust of health care organizations is associated with underutilization of health services. *Health Serv Res*. 2009;44:2093–2105. doi: 10.1111/j.1475-6773.2009.01017.x
  121. Mouslim MC, Johnson RM, Dean LT. Healthcare system distrust and the breast cancer continuum of care. *Breast Cancer Res Treat*. 2020;180:33–44. doi: 10.1007/s10549-020-05538-0
  122. Dean LT, Moss SL, McCarthy AM, Armstrong K. Healthcare system distrust, physician trust, and patient discordance with adjuvant breast cancer treatment recommendations. *Cancer Epidemiol Biomarkers Prev*. 2017;26:1745–1752. doi: 10.1158/1055-9965.EPI-17-0479
  123. Howlader N, Noone AM, Krapcho M, Miller D, Brest A, Yu M, Ruhl J, Tatalovich Z, Mariotto AB, Lewis DR, et al. *SEER cancer statistics review, 1975–2017*. Bethesda, Maryland: National Cancer Institute. Available at: [https://seer.cancer.gov/csr/1975\\_2017/](https://seer.cancer.gov/csr/1975_2017/). Based on November 2019 SEER data submission. Posted to the SEER web site, April 2020.
  124. Agurs-Collins T, Dunn BK, Browne D, Johnson KA, Lubet R. Epidemiology of health disparities in relation to the biology of estrogen receptor-negative breast cancer. *Semin Oncol*. 2010;37:384–401. doi: 10.1053/j.seminoncol.2010.05.002
  125. Hasan S, Dinh K, Lombardo F, Kark J. Doxorubicin cardiotoxicity in African Americans. *J Natl Med Assoc*. 2004;96:196–199.
  126. Braithwaite D, Tammemagi CM, Moore DH, Ozanne EM, Hiatt RA, Belkora J, West DW, Satariano WA, Liebman M, Esserman L. Hypertension is an independent predictor of survival disparity between African-American and white breast cancer patients. *Int J Cancer*. 2009;124:1213–1219. doi: 10.1002/ijc.24054
  127. Rugo HS, Brufsky AM, Ulcickas Yood M, Tripathy D, Kaufman PA, Mayer M, Yoo B, Abidoye OO, Yardley DA. Racial disparities in treatment patterns and clinical outcomes in patients with HER2-positive metastatic breast cancer. *Breast Cancer Res Treat*. 2013;141:461–470. doi: 10.1007/s10549-013-2697-5
  128. Baron KB, Brown JR, Heiss BL, Marshall J, Tait N, Tkaczuk KH, Gottlieb SS. Trastuzumab-induced cardiomyopathy: incidence and associated risk factors in an inner-city population. *J Card Fail*. 2014;20:555–559. doi: 10.1016/j.cardfail.2014.05.012
  129. Berkman A, Cole B, Ades PA, Dickey S, Higgins ST, Trentham-Dietz A, Sprague BL, Lakoski SG. Racial differences in breast cancer, cardiovascular disease, and all-cause mortality among women with ductal carcinoma in situ of the breast. *Breast Cancer Res Treat*. 2014;148:407–413. doi: 10.1007/s10549-014-3168-3
  130. Solanki PA, Ko NY, Qato DM, Calip GS. Risk of cancer-specific, cardiovascular, and all-cause mortality among Asian and Pacific Islander breast cancer survivors in the United States, 1991–2011. *SpringerPlus*. 2016;5:82. doi: 10.1186/s40064-016-1726-3
  131. Litvak A, Batukbhai B, Russell SD, Tsai H-L, Rosner GL, Jeter SC, Armstrong D, Emens LA, Fetting J, Wolff AC, et al. Racial disparities in the rate of cardiotoxicity of HER2-targeted therapies among women with early breast cancer. *Cancer*. 2018;124:1904–1911. doi: 10.1002/cncr.31260
  132. Troeschel AN, Liu Y, Collin LJ, Bradshaw PT, Ward KC, Gogineni K, McCullough LE. Race differences in cardiovascular disease and breast cancer mortality among US women diagnosed with invasive breast cancer. *Int J Epidemiol*. 2019;48:1897–1905. doi: 10.1093/ije/dyz108

133. Collin LJ, Troeschel AN, Liu Y, Gogineni K, Borger K, Ward KC, McCullough LE. A balancing act: racial disparities in cardiovascular disease mortality among women diagnosed with breast cancer. *Ann Cancer Epidemiol*. 2020;4:4. doi: 10.21037/ace.2020.01.02
134. Lotrionte M, Biondi-Zoccai G, Abbate A, Lanzetta G, D'Ascenzo F, Malavasi V, Peruzzi M, Frati G, Palazzoni G. Review and meta-analysis of incidence and clinical predictors of anthracycline cardiotoxicity. *Am J Cardiol*. 2013;112:1980–1984. doi: 10.1016/j.amjcard.2013.08.026
135. Keegan THM, Kushi LH, Li Q, Brunson A, Chawla X, Chew HK, Malogolowkin M, Wun T. Cardiovascular disease incidence in adolescent and young adult cancer survivors: a retrospective cohort study. *J Cancer Surviv*. 2018;12:388–397. doi: 10.1007/s11764-018-0678-8
136. Anderson C, Lund JL, Weaver MA, Wood WA, Olshan AF, Nichols HB. Disparities in mortality from noncancer causes among adolescents and young adults with cancer. *Cancer Epidemiol Biomarkers Prev*. 2019;28:1417–1426. doi: 10.1158/1055-9965.EPI-18-1384
137. Lipshultz SE, Lipsitz SR, Mone SM, Goorin AM, Sallan SE, Sanders SP, Orav EJ, Gelber RD, Colan SD. Female sex and higher drug dose as risk factors for late cardiotoxic effects of doxorubicin therapy for childhood cancer. *N Engl J Med*. 1995;332:1738–1743. doi: 10.1056/NEJM199506293322602
138. Krischer JP, Epstein S, Cuthbertson DD, Goorin AM, Epstein ML, Lipshultz SE. Clinical cardiotoxicity following anthracycline treatment for childhood cancer: the Pediatric Oncology Group experience. *J Clin Oncol*. 1997;15:1544–1552. doi: 10.1200/JCO.1997.15.4.1544
139. Khalid Y, Fradley M, Dasu N, Dasu K, Shah A, Levine A. Gender disparity in cardiovascular mortality following radiation therapy for Hodgkin's lymphoma: a systematic review. *Cardiooncology*. 2020;6:12. doi: 10.1186/s40959-020-00067-7
140. Eberly LA, Kallan MJ, Julien HM, Haynes N, Khatana SAM, Nathan AS, Snider C, Chokshi NP, Eneanya ND, Takvorian SU, et al. Patient characteristics associated with telemedicine access for primary and specialty ambulatory care during the COVID-19 pandemic. *JAMA Netw Open*. 2020;3:e2031640. doi: 10.1001/jamanetworkopen.2020.31640
141. Eberly LA, Khatana SAM, Nathan AS, Snider C, Julien HM, Deleener ME, Adusumalli S. Telemedicine outpatient cardiovascular care during the COVID-19 pandemic: bridging or opening the digital divide? *Circulation*. 2020;142:510–512. doi: 10.1161/CIRCULATIONAHA.120.048185
142. American Heart Association. Request for Applications for the Disparities in Cardio-Oncology Strategically Focused Research Network 2020. 2020.

# **SUPPLEMENTAL MATERIAL**

**Table S1. Representation in Clinical Studies on Cardioprotective Interventions.**

Author, Year, Name of Study	Study Type	Country	Malignancy	Main Treatment	Cardio-protective Intervention	CV Risk Factors*	Demographics Sex/Gender	Demographics Race/Ethnicity	Inclusion of Socioeconomic Variables
<b>Lifestyle</b>									
<b>Kirkham, 2018<sup>86</sup></b>	RCT	Canada	Breast cancer	Doxorubicin	Vigorous intensity exercise	Yes	N/A	75% white, 21% Asian, 4% other	Education level, marital status
<b>Neurohormonal agents<sup>†</sup></b>									
<b>Nakamae, 2005<sup>87</sup></b>	RCT	Japan	NHL	CHOP	Valsartan	No	53% female	No information	None
<b>Cardinale, 2006<sup>88</sup></b>	RCT	Italy	Breast cancer, HL, NHL, myeloma, AML, Ewing's sarcoma	Chemo-therapy <sup>‡</sup>	Enalapril	Yes	63% female	No information	None

<b>Cardinale, 2010<sup>89</sup></b>	Cohort	Italy	Breast cancer, HL, NHL, leukemia, other	Anthracycline-based therapy	Enalapril or enalapril and carvedilol	Yes	74% female	No information	None
<b>Georgakopoulos, 2010<sup>90</sup></b>	RCT	Greece	HL and NHL	Doxorubicin-based therapy	Enalapril or metoprolol	Yes	48% female	No information	None
<b>Bosch, 2013<sup>91</sup></b> OVERCOME	RCT	Spain	Leukemia, HL, NHL, multiple myeloma	Chemo-therapy <sup>‡</sup> and HSCT	Enalapril and carvedilol	Yes	43% female	No information	None
<b>Kaya, 2013<sup>92</sup></b>	RCT	Turkey	Breast cancer	Anthracycline-based therapy	Nebivolol	Yes	N/A	No information	None
<b>Gulati, 2016<sup>93</sup></b> PRADA	RCT	Norway	Breast cancer	5-fluorouracil, epirubicin, cyclophosphamide	Candesartan or metoprolol succinate	Yes	N/A	No information	None

<b>Kalay, 2006<sup>94</sup></b>	RCT	Turkey	Breast cancer, lymphoma, other	Anthracycline-based therapy	Carvedilol	No	88% female	No information	None
<b>Cardinale, 2015<sup>95</sup></b>	Cohort	Italy	Breast cancer, HL, NHL, myeloma, ovarian, other	Anthracycline-based therapy	Enalapril or enalapril and beta blockers	Yes	74% female	No information	None
<b>Pituskin, 2017<sup>96</sup></b>	RCT	Canada	HER2 positive breast cancer	Trastuzumab-based therapy	Perindopril or bisoprolol	Yes	N/A	No information	None
MANTICORE 101-Breast									
<b>Avila, 2018<sup>97</sup></b>	RCT	Brazil	HER2 negative	Doxorubicin, cyclophospha-	Carvedilol	Yes	N/A	No information	None
CECCY									

			breast cancer	mide, paclitaxel					
<b>Cardinale, 2018<sup>98</sup></b>	RCT	Italy	Breast cancer, acute leukemia, HL, NHL, and sarcoma	Anthracycline- based therapy	Enalapril	Yes	88% female	No information	None
<b>ICOS-ONE</b>									
<b>Guglin, 2019<sup>99</sup></b>	RCT	United States	HER2 positive breast cancer	Trastuzumab- based therapy	Lisinopril or carvedilol	Yes	N/A	86% white, 7% Black, 6% other	None
<b>Statins</b>									
<b>Acar, 2011<sup>100</sup></b>	RCT	Turkey	Leukemia, NHL,	Anthracycline- based therapy	Atorvastatin	No	58% female	No information	None



---

multiple  
myeloma

---

<b>Seicean, 2012<sup>101</sup></b>	Cohort	United States	Breast cancer	Anthracycline-based therapy	Statin	Yes	N/A	71% white (no other races specified)	Education level, family income, marital status, healthcare access
--	--------	---------------	---------------	-----------------------------	--------	-----	-----	--------------------------------------	---

<b>Calvillo-Argüelles, 2019<sup>102</sup></b>	Cohort	Canada	HER2 positive breast cancer	Trastuzumab-based therapy	Statin	Yes	N/A	No information	None
---	--------	--------	-----------------------------	---------------------------	--------	-----	-----	----------------	------

---

**Dexrazoxane**

---

<b>Speyer, 1992<sup>103</sup></b>	RCT	United States	Breast cancer	5-fluorouracil, doxorubicin,	Dexrazoxane	Yes	N/A	No information	None
---------------------------------------	-----	---------------	---------------	------------------------------	-------------	-----	-----	----------------	------

---

cyclophospha-  
mide

<b>Venturini, 1996</b> <sup>104</sup>	RCT	Italy	Breast cancer	Epirubicin-based therapy	Dexrazoxane	Yes	N/A	No information	None
<b>Wexler, 1996</b> <sup>105</sup>	RCT	United States	Sarcoma	Doxorubicin-based therapy	Dexrazoxane	No	37% female	76% white, 12% Black, 10% Hispanic/Latinx, 2% Asian	None
<b>Swain, 1997</b> <sup>106</sup>	RCT	United States	Breast cancer, lung carcinoma	Doxorubicin-based therapy	Dexrazoxane	No	88% female	77% white, 15% Black, 8% other	None
<b>Lopez, 1998</b> <sup>107</sup>	RCT	Italy	Breast cancer and soft-	Epirubicin-based therapy	Dexrazoxane	No	41% female with sarcoma;	No information	None

			tissue sarcoma				N/A for patients with breast cancer		
<b>Lipshultz, 2004<sup>108</sup></b>	RCT	United States	Acute lymphoid leukemia	Doxorubicin	Dexrazoxane	No	42% female patients	No information	None
<b>Galetta, 2005<sup>109</sup></b>	RCT	Italy	NHL	Epirubicin- based chemotherapy	Dexrazoxane	No	45% female	No information	None
<b>Marty, 2006<sup>110</sup></b>	RCT	France	Breast cancer	Anthracycline therapy	Dexrazoxane	Yes	N/A	87% white, 7% Black, 2% other	None
<b>Sun, 2015<sup>111</sup></b>	RCT	China	Breast cancer	Epirubicin- based therapy	Dexrazoxane	Yes	N/A	No information	None
<b>Tahover, 2017<sup>112</sup></b>	Cohort	Israel	Breast cancer	Doxorubicin- based therapy	Dexrazoxane	No	N/A	No information	None

<b>Kim, 2017</b> <sup>113</sup>	Cohort	Korea	HER2 positive breast cancer	Doxorubicin-based therapy	Dexrazoxane	Yes	N/A	No information	None
<b>Ganatra, 2019</b> <sup>114</sup>	Cohort	United States	Breast, ovarian, HL, NHL, DLBCL, PTCL, AML	Anthracycline-based therapy	Dexrazoxane	No	50% female	No information	None

AML=acute myeloid leukemia, CHOP=cyclophosphamide, doxorubicin, vincristine, prednisolone, CV=cardiovascular, CVD=cardiovascular disease, DLBCL=diffuse large B-cell lymphoma, HL=Hodgkin lymphoma, NHL=Non-Hodgkin lymphoma, PTCL=peripheral T-cell lymphoma

\*Cardiovascular risk factors include age, body mass index, diabetes, hypertension, dyslipidemia, history of smoking, family history of cardiac disease.

†Including angiotensin converting enzyme inhibitors, angiotensin II receptor blockers, and beta blockers.

‡Including any of the following: Anthracyclines, anti-metabolites, alkylating agents, vinca alkaloids, antitumor antibiotics.

References: 86-114