

UCSF

UC San Francisco Previously Published Works

Title

Application of Parallel Reaction Monitoring in ^{15}N Labeled Samples for Quantification

Permalink

<https://escholarship.org/uc/item/78c75273>

Authors

Reyes, Andres V
Shrestha, Ruben
Baker, Peter R
[et al.](#)

Publication Date

2022

DOI

10.3389/fpls.2022.832585

Peer reviewed



Application of Parallel Reaction Monitoring in ^{15}N Labeled Samples for Quantification

Andres V. Reyes^{1,2†}, Ruben Shrestha^{1†}, Peter R. Baker³, Robert J. Chalkley³ and Shou-Ling Xu^{1,2*}

¹Department of Plant Biology, Carnegie Institution for Science, Stanford, CA, United States, ²Carnegie Mass Spectrometry Facility, Carnegie Institution for Science, Stanford, CA, United States, ³Department of Pharmaceutical Chemistry, University of California, San Francisco, San Francisco, CA, United States

OPEN ACCESS

Edited by:

Jesus V. Jorin Novo,
University of Cordoba, Spain

Reviewed by:

Eliel Ruiz May,
Instituto de Ecología (INECOL),
Mexico

Sumio Ohtsuki,
Kumamoto University, Japan

Zhu Yang,
Hong Kong Baptist University,
Hong Kong SAR, China

*Correspondence:

Shou-Ling Xu
slxu@stanford.edu

[†]These authors have contributed
equally to this work

Specialty section:

This article was submitted to
Plant Proteomics and Protein
Structural Biology,
a section of the journal
Frontiers in Plant Science

Received: 10 December 2021

Accepted: 28 March 2022

Published: 03 May 2022

Citation:

Reyes AV, Shrestha R, Baker PR,
Chalkley RJ and Xu S-L (2022)
Application of Parallel Reaction
Monitoring in ^{15}N Labeled Samples
for Quantification.
Front. Plant Sci. 13:832585.
doi: 10.3389/fpls.2022.832585

Accurate relative quantification is critical in proteomic studies. The incorporation of stable isotope ^{15}N to plant-expressed proteins *in vivo* is a powerful tool for accurate quantification with a major advantage of reducing preparative and analytical variabilities. However, ^{15}N labeling quantification has several challenges. Less identifications are often observed in the heavy-labeled samples because of incomplete labeling, resulting in missing values in reciprocal labeling experiments. Inaccurate quantification can happen when there is contamination from co-eluting peptides or chemical noise in the MS¹ survey scan. These drawbacks in quantification can be more pronounced in less abundant but biologically interesting proteins, which often have very few identified peptides. Here, we demonstrate the application of parallel reaction monitoring (PRM) to ^{15}N labeled samples on a high resolution, high mass accuracy Orbitrap mass spectrometer to achieve reliable quantification even of low abundance proteins in samples.

Keywords: parallel reaction monitoring, ^{15}N metabolic labeling, proteomics, targeted quantification, skyline

INTRODUCTION

Relative quantitative comparisons between biological samples are critical in proteomic studies to uncover key differences of interest. The incorporation of stable isotope ^{15}N to labeled proteins in plants is one powerful strategy that can be used to achieve such information. In such a quantitative experiment, one sample contains the most common light isotope (^{14}N), and the other is labeled with a stable heavy isotope (^{15}N) in the form of nitrogen salts, such as $^{15}\text{NH}_4^{15}\text{NO}_3$, K^{15}NO_3 , or $^{15}\text{NH}_4\text{Cl}$. After mixing these samples, relative quantitative information is achieved by comparing the intensity between the light and heavy isotopic peptide peaks. As the samples can be mixed at the beginning of sample processing, ^{15}N metabolic labeling significantly reduces preparative and analytical variabilities, and allows extensive fractionation with little detrimental effect on quantification, enabling the relative quantification of thousands of proteins simultaneously (Wang et al., 2002; Skirycz et al., 2011; Arsova et al., 2012; Shrestha et al., 2022).

Our group has used this approach to identify and quantify immunoprecipitated plant Transport Protein Particle (TRAPP) complexes (Garcia et al., 2020) and ACINUS-mediated alternative splicing protein complexes (Bi et al., 2021), and affinity-purified BIN2 proximity-labeled protein

interaction network (Kim et al., 2019). ^{15}N labeling has also been applied to phosphoproteomics studies. For example, we identified and quantified S251 phosphorylation on BSU1 and demonstrated its flagellin-dependent manner (Park et al., 2019), and the Sussman laboratory has performed quantitative phosphoproteomics and identified RALF receptor FERONIA from Arabidopsis plasma membrane proteins (Haruta et al., 2014).

Despite its great promise, ^{15}N labeling experiment has some drawbacks (Shrestha et al., 2022). As the data are typically acquired in data-dependent mode (DDA), missing values due to selecting different peptides for analysis in related runs are common. To ensure the most precursors are selected for fragmentation analysis in each run, DDA selects the most abundant ions observed in MS^1 full scans for MS^2 analysis. However, this will result in a different subset of peptides in the sample being measured in each experiment. Secondly, even with high-resolution data acquisition, co-eluting peptides or chemical noise in the MS^1 scan still exists, especially in highly complex samples, resulting in inaccurate quantification. Thirdly, incomplete labeling in heavy-labeled samples leads to fewer proteins being identified, causing missing values among the different replicates (Minkoff et al., 2015; Shrestha et al., 2022). These drawbacks are more pronounced in lower abundance proteins where very few peptides are typically identified and quantified. Notably, these challenges are not all unique to ^{15}N labeling quantification, yet better solutions are desired to improve the quantification quality.

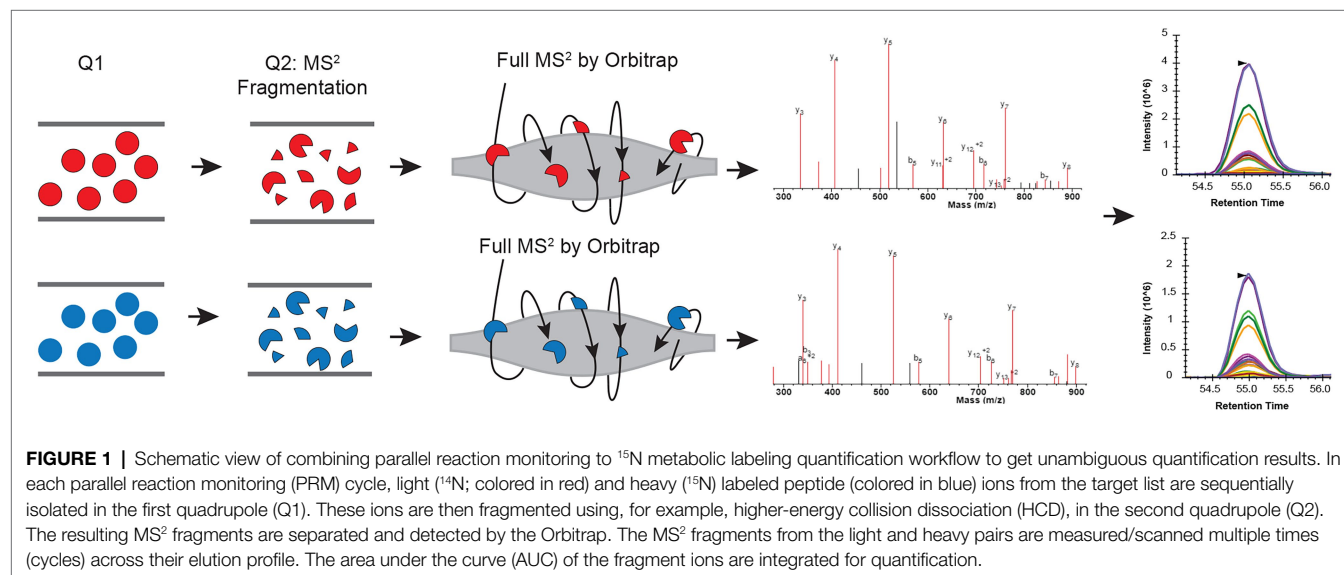
Here, we present utilizing Parallel Reaction Monitoring (PRM; Peterson et al., 2012) in ^{15}N labeling experiments to achieve more accurate quantification results (Park et al., 2019; Bi et al., 2021). In the PRM method, a pre-determined list of targeted peptide ions is mass filtered, usually using a quadrupole; they are fragmented, and all the yielded fragment ions are then detected, in our case, using a high-resolution Orbitrap mass analyzer (Figure 1). Because this is a targeted method, all peptides of interest are fragmented in reciprocal labeled replicates.

Also, because the quantification is done using MS^2 fragment ions measured in a high resolution, high accuracy instrument, signals from co-eluting peptides, or chemical noise can be easily eliminated, leading to more accurate quantification.

In this methods paper, we present the challenges of ^{15}N quantification using MS^1 scans of protein SAP18 that was acquired using data-dependent acquisition mode (Shrestha et al., 2022). We then show step-by-step how to remedy these challenges by setting up a PRM targeted method for the light ^{14}N and heavy ^{15}N target peptides using Skyline. We show how to set up a PRM acquisition method on an Orbitrap Q-Exactive HF (the method would be almost identical on any quadrupole-Orbitrap instrument such as Thermo Exploris or Tribrid instrument) and discuss the effects of different parameters such as the monitoring time window, numbers of peptides monitored at a particular retention time, cycle time, and scan numbers across the chromatographic elution profile. Finally, we demonstrate using Skyline examples of how PRM provides unambiguous quantification for SAP18. We highlight the additional advantage of PRM on the light and heavy peptides that generate the same pattern of fragment ions which co-elute but with different mass. Instead of using synthetic peptides to validate the targeted results in most of label-free experiments (Picotti et al., 2009), the heavy-labeled peptides in ^{15}N labeling experiments can serve as natural synthetic peptides. This method is applicable to protein-level quantifications in ^{15}N labeling samples and can also be applied to post-translational modified peptides with slight modifications (Park et al., 2019; Bi et al., 2021).

MATERIALS AND EQUIPMENT

Data from two batches of samples are presented. In the first set, materials and data acquisition were detailed in Bi et al. (2021). Briefly, the wild type (Col) and *acinus-2 pinin-1*



plants were grown on Hoagland medium containing ¹⁴N or ¹⁵N [1.34 g/L Hogland's No. 2 salt mixture without nitrogen, 6 g/L Phytoblend, and 1 g/L KNO₃ or 1 g/L K¹⁵NO₃ (Cambridge Isotope Laboratories), pH 5.8] for 14 days under the constant light condition at 21°C–22°C on vertical plates. Proteins were extracted from six biological samples (one ¹⁴N-labeled Col sample –1, two of ¹⁵N-labeled Col samples –2, –3, one ¹⁵N-labeled *acinus-2 pinin-1* sample –4, and two of ¹⁴N-labeled *acinus-2 pinin-1* sample –5 and –6) individually using SDS sample buffer and mixed as the following: one forward sample F1 (¹⁴N Col/¹⁵N *acinus-2 pinin-1*, Mix 1 + 4) and two reverse samples R1 and R2 (¹⁴N *acinus-2 pinin-1*/¹⁵N Col, Mix 2 + 5, and Mix 3 + 6) and separated by the SDS-PAGE gel with a very short run (~3 cm). Two segments [upper part (U) ranging from the loading well to ~50 KD; lower part (L) ranging from ~50 KD to the dye front] were excised, trypsin digested, and analyzed by liquid chromatography-mass spectrometry (LC-MS) as described in Bi et al. (2021) and Shrestha et al. (2022) on a Q-Exactive HF instrument using 50 cm column ES803 (50 cm × 75 μm ID, PepMap RSLC C18, 2 μm, Thermo Fisher). For data-dependent acquisition, precursor scan was from mass-to-charge ratio (*m/z*) 375 to 1,600 and the 20 most intense multiply charged precursors eluting at any given time were selected for fragmentation. Peptides were fragmented with higher-energy collision dissociation (HCD). The above untargeted acquisition data were analyzed using Protein Prospector Protein Prospector (Chalkley et al., 2005; Shrestha et al., 2022). The targeted method is described below in “method” section and analyzed by Skyline (Schilling et al., 2012).

The second batch of samples was generated using the same seedling growth conditions as described in Bi et al. (2021). Detailed descriptions can be found in Supplemental Method. Briefly, ¹⁴N labeled Col and ¹⁵N labeled *acinus-2 pinin-1* were mixed about 1:1 ratio and data-dependent acquisition (DDA) and targeted quantification (PRM) data were acquired on Q-Exactive HF instrument with trapping column Acclaim PepMap 100 (75 μm × 2 cm, C18, 3 μm, Thermo Fisher), then separated using analytical column Acclaim PepMap RSLC (75 μm × 25 cm, C18, 2 μm, Thermo Fisher).

The following items are required for data analysis in this method.

1. Skyline software (free download from <https://skyline.ms/>).
2. (Optional) Microsoft office, including Excel.
3. (Optional) R studio.

METHOD

Generate the Target Peptides List

To target proteins of interest (POI) for PRM analysis, it is necessary to get peptide information for those targets, including peptide sequence, *m/z* (mass-to-charge ratio), and retention time. This information can be retrieved either from prior

¹⁵N DDA data analysis or from publicly available databases. If from the latter, then a wider monitoring window is required since the retention time can shift due to different columns or gradients.

As peptides serve as a proxy to proteins, selecting target peptides that enable the best results is critical to yield the most accurate ratio that is truly representative of POI. Criteria for compatible target peptides:

- Peptide length: 6–25 amino acids long.
- Missed cleavages: peptides should have no missed cleavages. Using peptides containing missed enzyme cleavage sites is not ideal because if the digestion is more complete in one of the biological repeats, then the missed cleavage version may not be present.
- Not expected to be modified: Peptides containing methionines or tryptophans are generally not a good choice as they could become partly oxidized, splitting the signal between multiple masses.
- Intensity: Peptides from the same protein have different ionization efficiencies, so choosing a peptide that gave a strong signal when previously analyzed will give better quantification accuracy.
- Unique to the protein of interest.

Note: if there are multiple peptides to choose from, then following the criteria above will generate optimal results. If few peptides have been previously identified, then users are presented with a limited choice and may be forced to use the less ideal peptides for quantification.

Generate the Skyline Template and Export the Information

After creating a list of target peptides, the next step is to create a Skyline template for them. This will serve as a method to calculate the masses of the light and heavy versions of the peptides and will be used downstream to import and quantify peptide ratios once the PRM data are acquired.

Organize the Peptide Sequence and Protein Name Into a Two-Column Excel File

Example of Skyline peptide list is provided in **Table 1**.

Import Peptides Into Skyline

Peptide templates in Skyline may be generated manually, using an R script or by using a library.

TABLE 1 | Example of Skyline peptide list.

Peptide sequence	Protein name
EVGETMAYPNR	SAP18
LSFAFVYPNNK	SAP18
LAVNLIPFPR	TUB2
YTGDSDLQLER	TUB2

TABLE 2 | Light ¹⁴N to heavy ¹⁵N amino acid conversion for 20 amino acids.

Amino acid	Conversion
A,D,E,F,G,I,L,M,P,S,T,V,Y	[+1]
K,N,Q,W	[+2]
H	[+3]
R	[+4]
C + Carbamidomethylation	[+58]
M + oxidation	[+17]

TABLE 3 | Output from the R script that converts peptide sequence to heavy peptide sequence recognizable by Skyline.

Peptide sequence	Protein name
E[+1]V[+1]G[+1]E[+1]T[+1]M[+1]A[+1] Y[+1]P[+1]N[+2]R[+4]	SAP18
L[+1]S[+1]F[+1]A[+1]F[+1]V[+1]Y[+1] P[+1]N[+2]N[+2]K[+2]	SAP18
L[+1]A[+1]V[+1]N[+2]L[+1][+1]P[+1] F[+1]P[+1]R[+4]	TUB2
Y[+1]T[+1]G[+1]D[+1]S[+1]D[+1]L[+1] Q[+2]L[+1]E[+1]R[+4]	TUB2

Manual Template Generation

Manual template generation involves two steps: (1) generate the light version; (2) modify the sequence to the heavy version with heavy isotope modification. Once modified, Skyline will automatically include the light version.

To generate the light version, the most straightforward way is to copy the peptide sequences and protein names from an Excel spreadsheet like that shown in **Table 1** and paste it into the peptides menu in Skyline. The peptides can be inserted into Skyline using the option:

Skyline > Edit > Insert > Peptides > copy excel into skyline box > insert

Modify the sequence to the heavy version with heavy isotope modification. Right-click on the peptide and click on edit modification. It is important to add ¹⁵N isotope heavy modification to Skyline. Detailed instructions are described in **Supplementary Figure 1**. Once all amino acids in the sequence have been modified with a heavy isotope; then, the heavy version of the peptide is generated. Skyline will automatically include the light version.

Generate Template Using an R Script

A faster way to insert target peptide pairs is by using an R script (available upon request) that can automatically generate heavy peptide sequences recognizable by Skyline. The sequence of the peptide is converted to a heavy version using the formula as listed in **Table 2**. The input file for the R script is the same as **Table 1**, and the output after running the script is a CSV file containing the heavy peptide sequences (**Table 3**). Insert the peptide sequence and protein name to Skyline as described above and Skyline will generate both light and heavy peptide templates.

Generate the Template Using a Library

Templates can be generated using the library function. Identified peptide information is first exported from the search engine

results and imported into Skyline. Detailed instructions can be found in Skyline tutorials¹ and will not be covered here. The advantage of using a library is that it allows the generation of templates for hundreds or more peptides and it can contain a retention time which potentially can be used for data filtering in the subsequent steps. The downside of using the library is that the light and heavy peptides are input as separate entries, creating potential problems for data analysis unless users manually curate the template using the steps outlined above.

Export List Containing Mass Information of Paired Peptides From Skyline

Once all the appropriate target peptides are represented in the Skyline session; the light and heavy lists are exported to help generate the spreadsheet needed for the PRM acquisition method in the Orbitrap mass spectrometer.

The path to export the skyline list is as:

Skyline > File > Export > Report

Export a custom report that only contains peptide sequence, precursor charge, protein name, and precursor *m/z*.

To create a custom report, navigate:

Edit List > Add > Check Peptide Sequence, Precursor Charge, Protein Name, and Precursor Mz.

Add Retention Time and Create PRM Template (Inclusion List)

Add Retention Time Window

A critical component of the PRM assay is the inclusion of a retention time window. From either a previous data-dependent acquisition MS run or from a public database, copy and paste the recorded retention time for those target peptides into the report file generated by Skyline with a header labeled retention time. Next add a monitoring window that specifically corresponds to the precursor survey retention time window. A narrow window (± 5 min or less) can be chosen if the same chromatographic conditions in DDA are to be used for targeted quantification. Otherwise, a wider window is recommended to make certain that the target peptides are monitored. Notably, the numbers of the targets, cycle time, and the data points across the elution profile for the PRM method are detailed in Peterson et al. (2012), Gallien et al. (2014), and Rauniyar (2015). Typically, peptides elute in a 15–60 s window, depending on the column used. However, retention times in liquid chromatograph can vary slightly between runs; therefore, the actual monitoring window is normally wider than the actual peptide elution profile. **Figure 2** compares a 20 min' window (A) to a 5 min' window (C), illustrating the consequences on the increased number of monitored target peptides at a given time when a wider window is used (B,D).

The PRM cycle time will increase significantly when the target number increases in a cycle (**Figure 3**), and this will affect the number of data points across the chromatographic

¹https://skyline.ms/_webdav/home/software/Skyline/%40files/tutorials/MethodEdit-2_5.pdf?listing=html

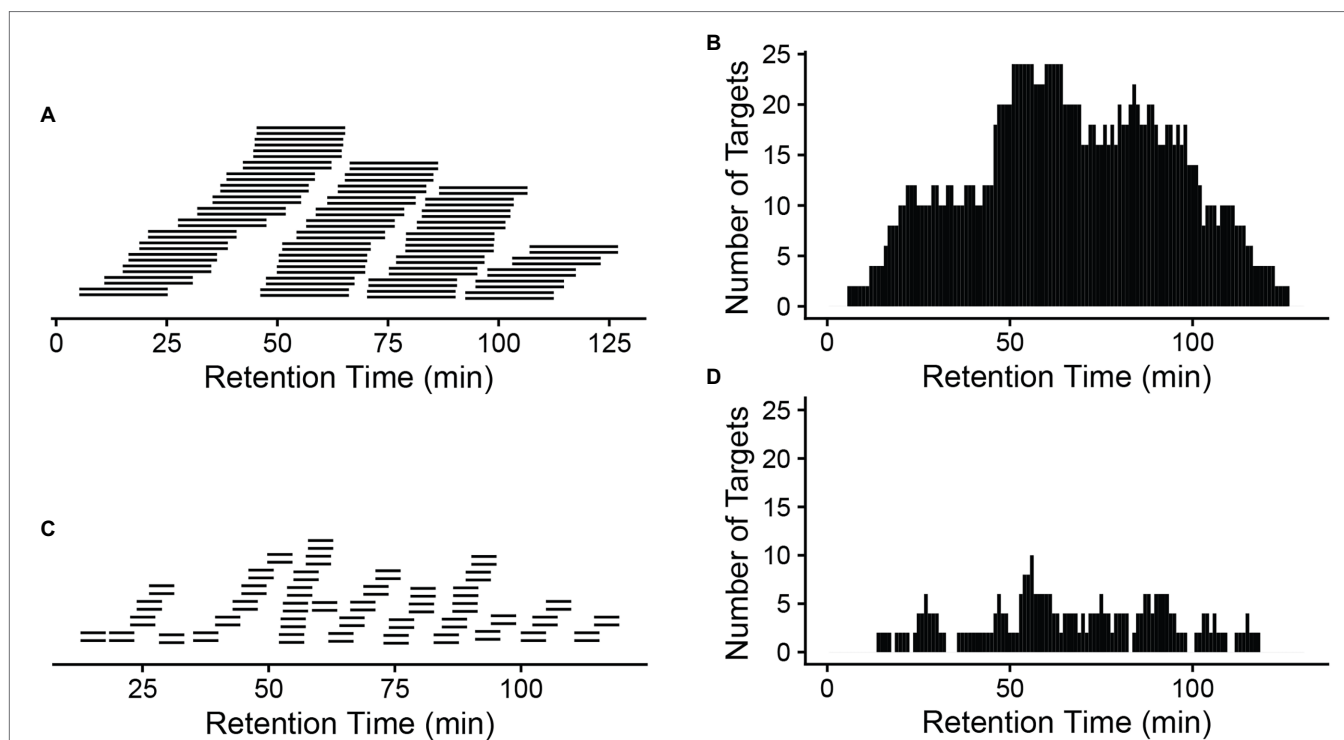


FIGURE 2 | A narrow window is preferred to reduce monitored targets at a given time. A 20-min window (**A**) will result in a longer target list (**B**) that will be monitored at a given time than a 5-min window (**C,D**). x-axis: retention time (gradient). A total of 42 peptide pairs (light and heavy) are in the targeted list across the whole gradient (**A,C**). More monitored targets in (**B**) will result in a longer cycle time (the time to cycle through the entire list of the target peptides at a given time on the gradient), meaning longer time between data points for a given peptide, so fewer measurements across the elution of the peptide.

peaks. For reliable quantification, usually 8–10 scans across the peak are recommended (Gallien and Domon, 2015). If there are many precursors to target at a given time one may need to reduce the injection time (time accumulating a given precursor) to produce 8–10 data points across the peak. As a longer injection time is generally preferred to boost signal to noise, reduced injection time will impact sensitivity. Thus, target list, cycle time, and scan numbers (data points) need to be well balanced to achieve the best quantification results.

Make a PRM Template

This adapted Skyline report now has all the information needed to produce the form needed by the Orbitrap instrument to target these peptides. The next step is to create a csv file with the following headers, which can be imported into the PRM template *via* global list/inclusion list (**Table 4**).

For a Q-Exactive HF, we recommend the “(N)CE” column should be “27” for all rows; the same as used in the DDA method. The first column numbers are generated from Skyline. Only the mass, polarity, retention time window, and collision energy information are required in the inclusion list. For other instruments, we recommend using the same collision energy used for DDA analysis in the PRM studies, as different collision energy can affect the fragment (transition) patterns (Diedrich et al., 2013).

Create PRM Method on Orbitrap Analyzer

The PRM method is set up using PRM in the Q-Exactive HF Orbitrap MS. Recommended parameters include MS² resolution: 60,000, AGC target: 2e5, Maximum injection time IT: 200 ms, and Isolation window: 1.4 m/z, (N)CE: 27. Method runtime and chromatography conditions should be the same as used in DDA. Note: The Maximum injection time can be varied depending on the abundance of peptides and the number of peptides targeted at a particular retention time.

Import to Skyline, Analyze the Data, and Export the Result

Once the targeted data are acquired, it can be analyzed in the Skyline software.

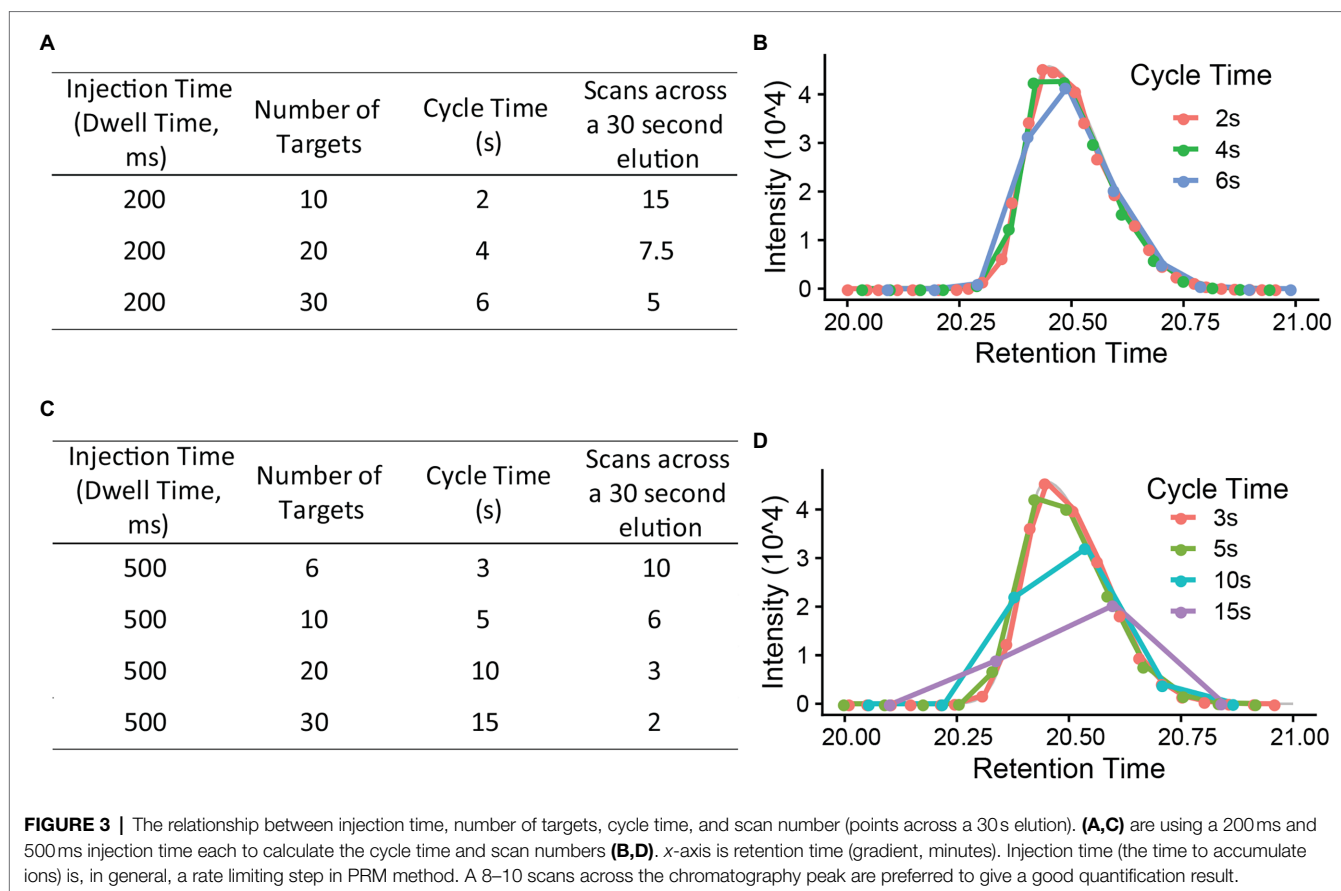
With the previously created peptide template in the section “Import peptides into Skyline,” we must first adjust the transition settings so that the raw data can be properly imported into Skyline (see **Supplementary Figure 2**). Raw data can be imported directly into Skyline using the option:

File > Import > Results >...

Once imported, quantification between the light and heavy version of each target peptide can be analyzed. Then, we will export the results using the option:

File > Export >...

The following will be selected for the report, including: Precursor m/z, Best Retention Time, Peptide Sequence, Protein

**TABLE 4** | PRM template as an inclusion list.

Mass [m/z]	Formula [M]	Formula type	Species	CS [z]	Polarity	Start [min]	End [min]	(N)CE	(N)CE type	MSX ID	Comment
650.3402				2	Positive	87.35	107.35	27	NCE		LSFAFVYPNNK
657.3195				2	Positive	87.35	107.35	27	NCE		L[+1]S[+1]F[+1] A[+1]F[+1]V[+1] Y[+1]P[+1]N[+2] N[+2]K[+2]
633.7928				2	Positive	36.43	56.43	27	NCE		EVGETMAYPNR
641.2706				2	Positive	36.43	56.43	27	NCE		E[+1]V[+1]G[+1] E[+1]T[+1]M[+1] A[+1]Y[+1]P[+1] N[+2]R[+4]

Name, Total Area Fragment, and File Name. The Total Area Fragment field contains the sum of the all areas under the curve of the elution profiles of each transition ions.

RESULTS

Two common challenges in ¹⁵N quantification using DDA acquisition and quantification: missing values and contamination from co-eluting peptides.

The goals of our discovery experiments were to understand: (1) Are *acinus-2* and *pinin-1* mutant null alleles? (2) Do SAP18

and SR45, two interactors of ACINUS and PININ, have less accumulation when ACINUS and PININ are absent? and (3) What proteins are over-accumulated or less accumulated in *acinus-2 pinin-1* double mutant? We performed three ¹⁵N metabolic labeling experiments, including one forward sample F1 (¹⁴N Col/¹⁵N *acinus-2 pinin-1*) and two reverse samples R1 and R2 (¹⁴N *acinus-2 pinin-1*/¹⁵N Col) experiments. Using a non-targeted DDA method, we were able to quantify thousands of proteins and demonstrate ACINUS and SR45 proteins have dramatically reduced levels in the double mutant. We also identified proteins that are over-accumulated or less accumulated in the mutants (Shrestha et al., 2022). However, as is common in DDA data,

there were missing values in reciprocal labeled experiments, particularly for some of the lower abundance proteins. In the following, we used SAP18 as an example to demonstrate the challenge using DDA and how the use of targeted quantification improved the sensitivity and accuracy of quantification.

Using DDA, we were only able to identify and quantify SAP18 in two experiments (F1, R1), but not in the R2 experiment (Figures 4A,B). In F1, we observed SAP18 had a dramatic reduction in the *acinus-2 pinin-1* double mutant. Four peptides were identified by MS/MS in F1 (all from the Col ¹⁴N channel), with three peptides showing consistent reductions in the mutant, such as the peptide shown in Figure 4C, while one peptide quantification showed an outlier result (Figures 4A,D). The quantification ratio 0.386 of peptide “EVGETMAYPNR” was an outlier result because the matching peak of the ¹⁵N peptide was contaminated with a co-eluting ¹⁴N labeled peptide. We reason this is a co-eluting ¹⁴N labeled peptide based on the isotope pattern and that the M-1 peak is missing (labeled with black arrow), which we would expect to be about 73% of the intensity of the M peak based on the observed labeling efficiency of 94%. In contrast, in the reverse labeling experiment R1 in which Col was ¹⁵N labeled, SAP18 was only identified with a single peptide from Col, but quantification based on this peptide is wrong because the ¹⁴N peak isotope cluster is incorrect (Figure 4E) and the ¹⁴N monoisotopic peak is likely contaminated with chemical noise. In the reverse labeling experiment R2, no peptides were identified from SAP18 in both Col and *acinus-2 pinin-1*; hence, no quantification was possible (Figures 4A,B).

Parallel Reaction Monitoring on ¹⁵N Metabolic Samples

Targeted quantification using MS² can address the challenges illustrated above. We have previously employed PRM to phosphopeptides in label-free samples (Ni et al., 2017) and in ¹⁵N samples (Park et al., 2019). Targeted quantification of ¹⁵N samples has also been implemented by the Sussman laboratory using selected reaction monitoring (SRM) using a low-resolution triple quadrupole mass spectrometer (Minkoff et al., 2015). Due to the high complexity of the samples because all proteins were extracted, PRM on a high resolution, high mass accuracy Orbitrap mass spectrometer should provide more accurate results. Two peptides from TUBLIN2 proteins (Figure 5), as well as 42 different peptide pairs (light and heavy) from 30 relatively abundant proteins in the samples (Supplementary Figure 3), were set up for PRM targeted quantification. From this data, we observed that (1) ¹⁴N and ¹⁵N peptides almost co-elute, with ¹⁵N eluting about 2–4 s earlier in a 2-h gradient (Supplementary Figure 3). (2) The light and heavy pair of peptides produce similar fragmentation patterns with different fragment masses, as illustrated in Figure 5 and Supplementary Figure 3. Each colored line represents the same fragment ion between the light and heavy pairs. (3) Peptides from the same protein give consistent quantification in PRM. The PRM measurement on TUB2 shows that samples were not mixed exactly at 1:1, similar to quantification result using MS¹ level (Figure 4A). The ratios from TUB2 quantification were

utilized for normalization for sample loading as the level of this protein is not expected to be altered in the mutants.

We set up targeted quantifications for the peptides “EVGETMAYPNR” and “LSFAFVYPNNK” from SAP18 as described in the section “Method.” The PRM quantification of “EVGETMAYPNR” showed a consistent reduction of this peptide in the *acinus-2 pinin* double mutant in all three replicates, confirming the ¹⁵N peak quantification in MS¹ spectra was indeed incorrect due to co-eluting peptide contamination (Figures 4D, 6A). For the peptide “LSFAFVYPNNK,” the PRM quantification also showed a consistent reduction of signal in the double mutant (Figure 6B). More importantly, both peptides were quantified in the R2 sample, which was not quantified in the non-targeted analysis. We also performed targeted quantification of a third peptide “QGGGRPLPPPPR” (Bi et al., 2021). Altogether, we concluded SAP18 protein levels were dramatically reduced to ~2.7% of WT levels after normalization (median number of all the measured ratios), indicating that the stability of the other members of the ASAP and PSAP complexes is dependent on ACINUS and PININ in Arabidopsis.

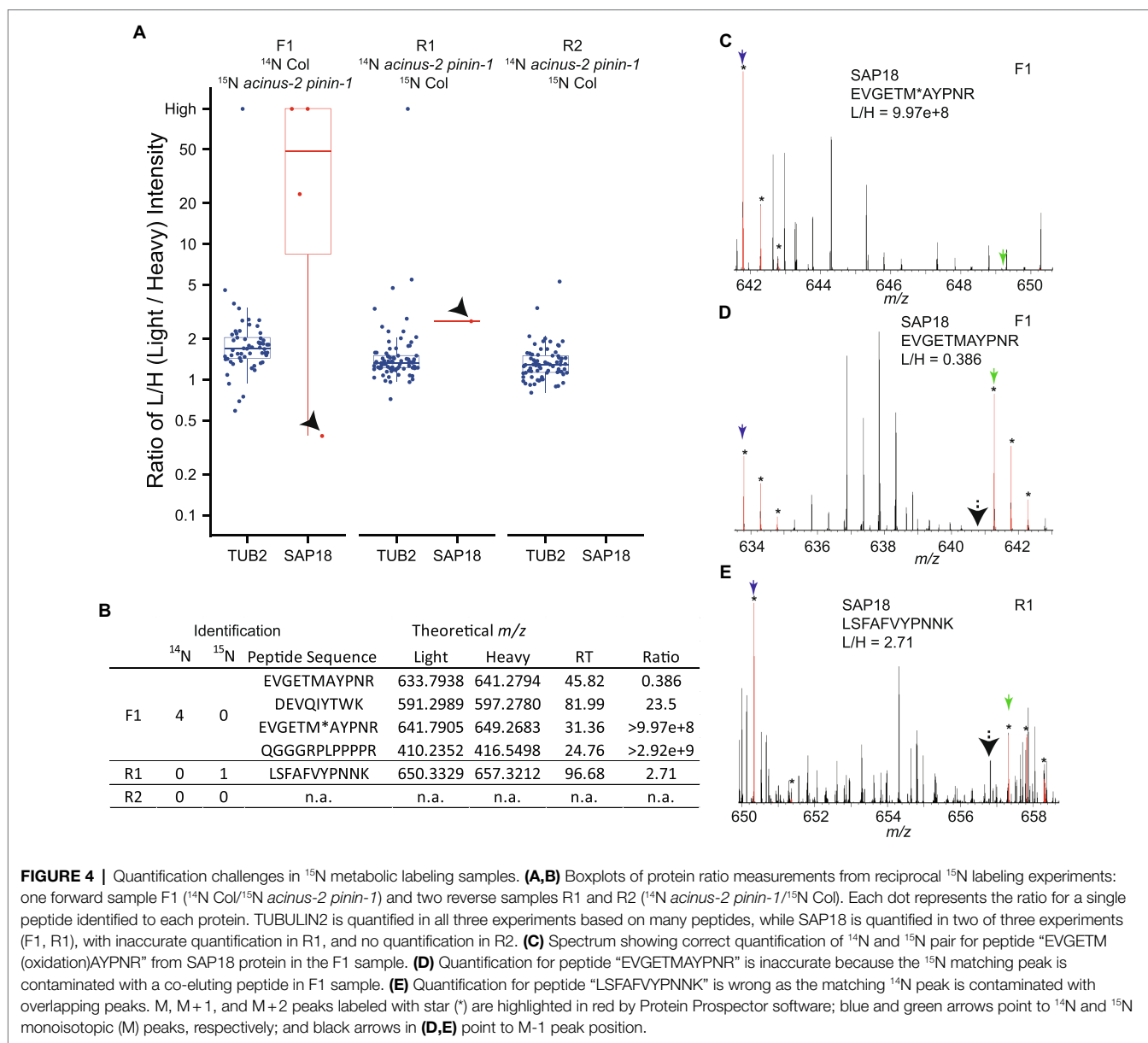
Using the same approach, we also performed a targeted assay to prove *pinin-1* mutant was a null allele (Supplementary Figure 4). Notably, the PININ protein was of relatively low abundance and was not detected in DDA data. We were able to set up PRM for PININ using the retention time and peptide information obtained from previous immunoprecipitation results (unpublished). Using the PRM method, we showed both the N- and C-termini of PININ (before and after the T-DNA insertion; Supplementary Figure 4) were detectable in Col but were not detectable in the double mutant (Bi et al., 2021).

DISCUSSION

Data-dependent mode is the most commonly used data acquisition approach in proteomics. It allows identification and quantification of many proteins without prior knowledge of the sample composition, so it is often used for the discovery stage (Shrestha et al., 2022). However, DDA can suffer from missing values for low abundance proteins due to its stochastic nature of selecting peaks for MS/MS. Furthermore, DDA of ¹⁵N heavy-labeled samples often leads to less identifications and missing quantification values due errors in monoisotopic peak assignment caused by incomplete labeling (Shrestha et al., 2022). In addition, quantification using the MS¹ scan often suffers from signal contamination from co-eluting peptides or chemical noise which will produce inaccurate ratios. To improve the quantification, we performed targeted quantification on these ¹⁵N labeled samples.

Targeted acquisition of ¹⁵N samples has previously been reported (Hart-Smith et al., 2017), where an inclusion list for POI was added to data acquisition, such that more proteins were repeatedly identified and quantified across multiple runs. However, the quantification was done at the MS¹ level, so although this addresses the missing value problem, the quantification accuracy can still be affected by contaminating co-eluting peaks.

We demonstrated using PRM targeted quantification we were able to consistently quantify SAP18 in all replicates. SAP18 is



not only of low abundance but it is also relatively small (18 KDa) so it produces few peptides, both of which contribute to the challenge of quantifying this protein. We were also able to quantify PININ proteins using PRM targeted assay even PININ proteins were not detected by DDA.

For PRM analysis at initial testing, it is recommended that users start with five peptides, as suggested by Picotti et al. (2009). After testing, the two best peptides (combination of high ionization efficiency and multiple transitions) are chosen for final analysis. Employing PRM measurements on high-resolution high accuracy instruments produces quantification results with low contamination from background. Sometimes there is interference in one or two transitions, but this can be easily spotted due to it being unlikely that the contaminating signal perfectly co-elutes with the other transitions from the peptide of interest, so one can

simply not use the problematic transitions for the quantification of that peptide. This is one of the advantages of PRM over SRM, as the full MS^2 of the targeted peptides is measured; thus, users can afford to remove one or two contaminated transitions without compromising the final quantifications results.

For reliable quantification, it is recommended to quantify based on at least three intense transitions and using more is typically better. However, some peptides (particularly those containing prolines) can produce one or two dominant transitions so sometimes a smaller number must be used. Fragment ions with an m/z above the precursor m/z are desirable as they are more specific. However, these are often not the most intense transitions, and so selecting only these transitions can decrease the sensitivity.

Combining PRM and ^{15}N labeling has additional advantages. As shown in Figure 6, SAP18 is quantified using both ^{14}N

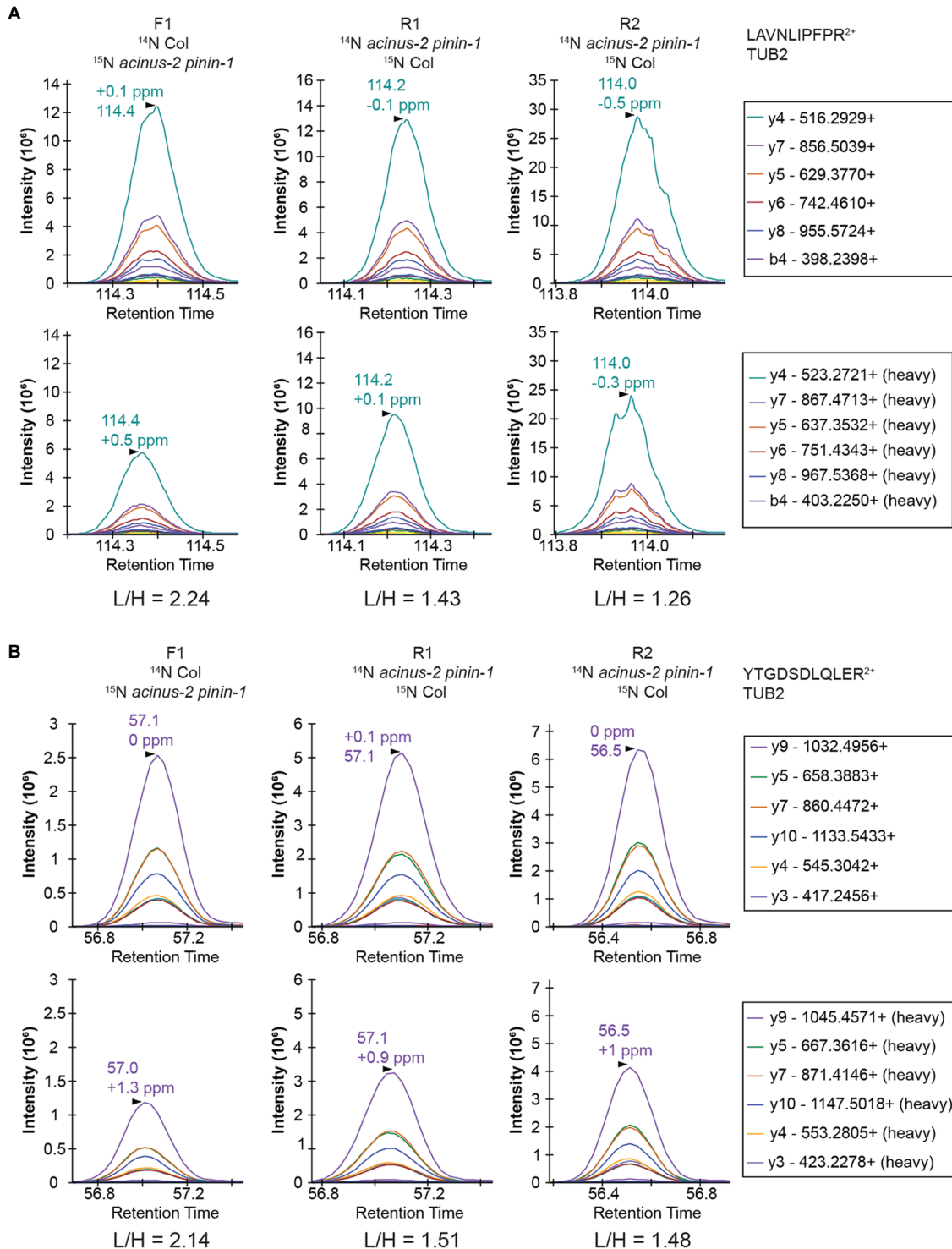


FIGURE 5 | PRM quantification on TUBULIN2. Peptides “LAVNLIPFPR” (A) and “YTGDSLQLER” (B) from TUB2 were quantified in three samples. The six most abundant fragment ions are annotated with mass in the right legend with the order from most to the least abundant. The light and heavy peptides generate the same pattern of fragment ions with different mass.

labeled and ¹⁵N labeled peptides that co-elute, and as MS² of these pairs produce the same fragments with the same pattern (the order of most abundant to the least) but with

different masses, the false-discovery rate of these peptides is minimal; thus, the quantification of the proteins is even more reliable than using label-free samples. Many practitioners

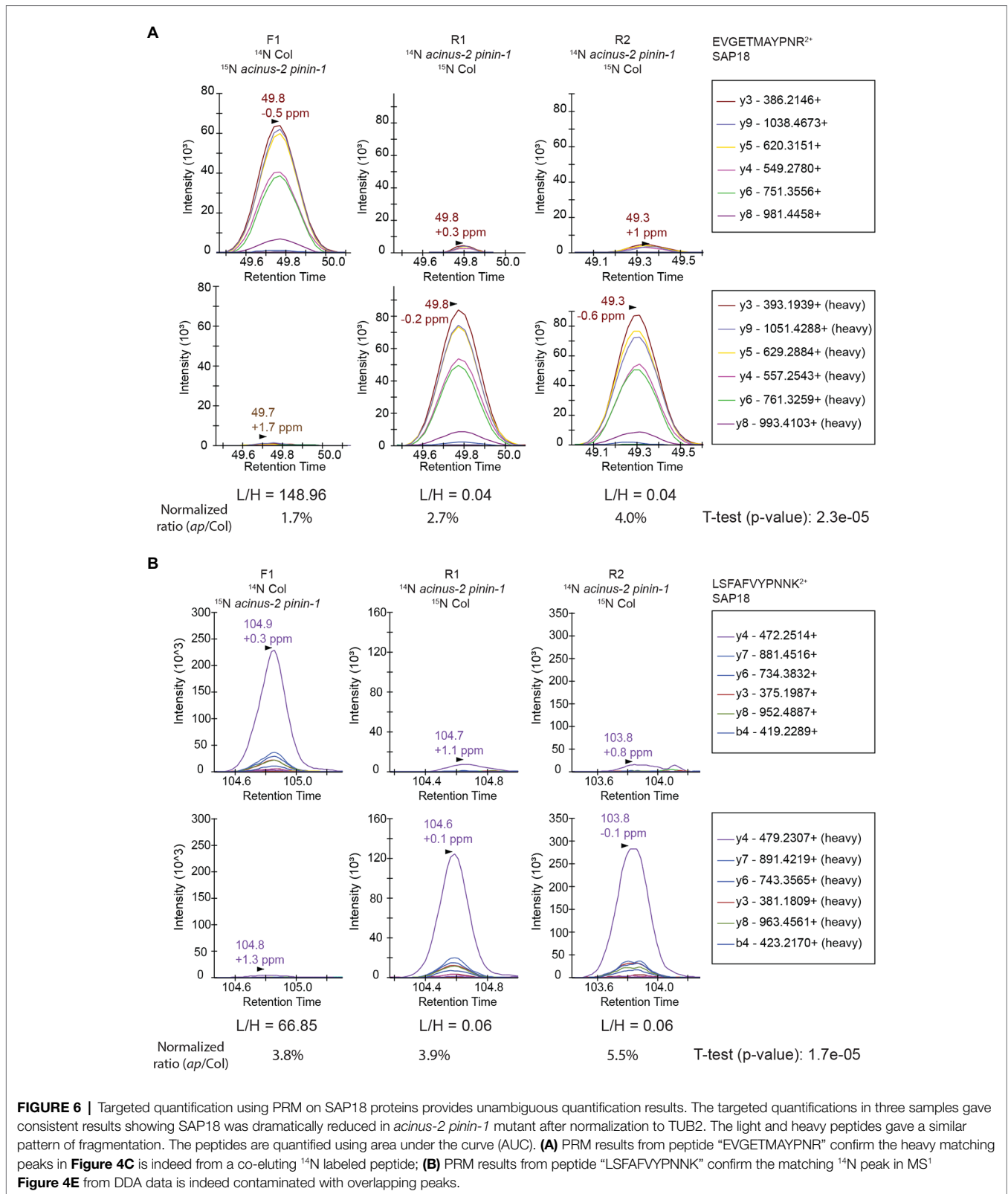


FIGURE 6 | Targeted quantification using PRM on SAP18 proteins provides unambiguous quantification results. The targeted quantifications in three samples gave consistent results showing SAP18 was dramatically reduced in *acinus-2 pinin-1* mutant after normalization to TUB2. The light and heavy peptides gave a similar pattern of fragmentation. The peptides are quantified using area under the curve (AUC). **(A)** PRM results from peptide “EVGETMAYPNR” confirm the heavy matching peaks in **Figure 4C** is indeed from a co-eluting ¹⁴N labeled peptide; **(B)** PRM results from peptide “LSFADFVYPNNK” confirm the matching ¹⁴N peak in MS¹ **Figure 4E** from DDA data is indeed contaminated with overlapping peaks.

of the PRM experiments include synthetic (heavy) peptides to validate targeted quantification results (Picotti et al., 2009; Gallien and Domon, 2015). The ¹⁵N labeled heavy

peptides in our experiments can serve as the same role as “natural” heavy peptides to provide this extra level of reliability.

DATA AVAILABILITY STATEMENT

The datasets presented in this study can be found in online repositories. The names of the repository/repositories and accession number(s) can be found at: <https://www.ebi.ac.uk/pride/archive/>, PXD030096, <https://www.ebi.ac.uk/pride/archive/>, PXD030098, and <https://www.ebi.ac.uk/pride/archive/>, PXD030112.

AUTHOR CONTRIBUTIONS

AVR, RS, and S-LX designed the experiments, analyzed the data sets, generated the figures, and wrote the manuscript. AVR and RS performed the experiment. PRB and RJC provided technical support for Protein Prospector and revised the manuscript.

REFERENCES

- Arsova, B., Kierszniowska, S., and Schulze, W. X. (2012). The use of heavy nitrogen in quantitative proteomics experiments in plants. *Trends Plant Sci.* 17, 102–112. doi: 10.1016/j.tplants.2011.11.001
- Bi, Y., Deng, Z., Ni, W., Shrestha, R., Savage, D., Hartwig, T., et al. (2021). Arabidopsis ACINUS is O-glycosylated and regulates transcription and alternative splicing of regulators of reproductive transitions. *Nat. Commun.* 12:945. doi: 10.1038/s41467-021-20929-7
- Chalkley, R. J., Baker, P. R., Huang, L., Hansen, K. C., Allen, N. P., Rexach, M., et al. (2005). Comprehensive analysis of a multidimensional liquid chromatography mass spectrometry dataset acquired on a quadrupole selecting, quadrupole collision cell, time-of-flight mass spectrometer: II. New developments in protein prospector allow for reliable and comprehensive automatic analysis of large datasets. *Mol. Cell. Proteomics* 4, 1194–1204. doi: 10.1074/mcp.D500002-MCP200
- Diedrich, J. K., Pinto, A. F., and Yates, J. R. 3rd. (2013). Energy dependence of HCD on peptide fragmentation: stepped collisional energy finds the sweet spot. *J. Am. Soc. Mass Spectrom.* 24, 1690–1699. doi: 10.1007/s13361-013-0709-7
- Gallien, S., Bourmaud, A., Kim, S. Y., and Domon, B. (2014). Technical considerations for large-scale parallel reaction monitoring analysis. *J. Proteome* 100, 147–159. doi: 10.1016/j.jprot.2013.10.029
- Gallien, S., and Domon, B. (2015). Detection and quantification of proteins in clinical samples using high resolution mass spectrometry. *Methods* 81, 15–23. doi: 10.1016/j.ymeth.2015.03.015
- Garcia, V. J., Xu, S. L., Ravikumar, R., Wang, W., Elliott, L., Gonzalez, E., et al. (2020). TRIPP is a plant-specific component of the Arabidopsis TRAPP II membrane trafficking complex with important roles in plant development. *Plant Cell* 32, 2424–2443. doi: 10.1105/tpc.20.00044
- Hart-Smith, G., Reis, R. S., Waterhouse, P. M., and Wilkins, M. R. (2017). Improved quantitative plant proteomics via the combination of targeted and untargeted data acquisition. *Front. Plant Sci.* 8:1669. doi: 10.3389/fpls.2017.01669
- Haruta, M., Sabat, G., Stecker, K., Minkoff, B. B., and Sussman, M. R. (2014). A peptide hormone and its receptor protein kinase regulate plant cell expansion. *Science* 343, 408–411. doi: 10.1126/science.1244454
- Kim, T.-W., Park, C.H., Hsu, C.C., Zhu, J., Hsiao, Y., Branon, T.C., et al. (2019). Application of TurboID-mediated proximity labeling for mapping a GSK3 kinase signaling network in Arabidopsis. bioRxiv [Preprint]. doi: 10.1101/636324
- Minkoff, B. B., Stecker, K. E., and Sussman, M. R. (2015). Rapid phosphoproteomic effects of abscisic acid (ABA) on wild-type and ABA receptor-deficient *A. thaliana* mutants. *Mol. Cell. Proteomics* 14, 1169–1182. doi: 10.1074/mcp.M114.043307
- Ni, W., Xu, S.-L., González-Grandío, E., Chalkley, R. J., Huhmer, A. F. R., Burlingame, A. L., et al. (2017). PPKs mediate direct signal transfer from phytochrome photoreceptors to transcription factor PIF3. *Nat. Commun.* 8:15236. doi: 10.1038/ncomms15236

All authors contributed to the article and approved the submitted version.

FUNDING

This research was funded by the NIH grant R01GM135706 to S-LX and Carnegie endowment fund to Carnegie mass spectrometry facility.

SUPPLEMENTARY MATERIAL

The Supplementary Material for this article can be found online at: <https://www.frontiersin.org/articles/10.3389/fpls.2022.832585/full#supplementary-material>

- Park, C.H., Youn, J.-H., Xu, S.-L., Kim, J.-G., Bi, Y., Xu, N., et al. (2019). BSU1 family phosphatases mediate Flagellin-FLS2 signaling through a specific phosphocode. bioRxiv [Preprint]. doi: 10.1101/685610
- Peterson, A. C., Russell, J. D., Bailey, D. J., Westphall, M. S., and Coon, J. J. (2012). Parallel reaction monitoring for high resolution and high mass accuracy quantitative, targeted proteomics. *Mol. Cell. Proteomics* 11, 1475–1488. doi: 10.1074/mcp.O112.020131
- Picotti, P., Bodenmiller, B., Mueller, L. N., Domon, B., and Aebersold, R. (2009). Full dynamic range proteome analysis of *S. cerevisiae* by targeted proteomics. *Cell* 138, 795–806. doi: 10.1016/j.cell.2009.05.051
- Rauniyar, N. (2015). Parallel reaction monitoring: a targeted experiment performed using high resolution and high mass accuracy mass spectrometry. *Int. J. Mol. Sci.* 16, 28566–28581. doi: 10.3390/ijms161226120
- Schilling, B., Rardin, M. J., MacLean, B. X., Zawadzka, A. M., Frewen, B. E., Cusack, M. P., et al. (2012). Platform-independent and label-free quantitation of proteomic data using MS1 extracted ion chromatograms in skyline: application to protein acetylation and phosphorylation. *Mol. Cell. Proteomics* 11, 202–214. doi: 10.1074/mcp.M112.017707
- Shrestha, R., Reyes, A. V., Baker, P. R., Wang, Z. Y., Chalkley, R. J., and Xu, S. L. (2022). (¹⁵N) metabolic labeling quantification workflow in Arabidopsis using protein prospector. *Front. Plant Sci.* 13:832562. doi: 10.3389/fpls.2022.832562
- Skirycz, A., Memmi, S., De Bodt, S., Maleux, K., Obata, T., Fernie, A. R., et al. (2011). A reciprocal ¹⁵N-labeling proteomic analysis of expanding Arabidopsis leaves subjected to osmotic stress indicates importance of mitochondria in preserving plastid functions. *J. Proteome Res.* 10, 1018–1029. doi: 10.1021/pr100785n
- Wang, Y. K., Ma, Z., Quinn, D. F., and Fu, E. W. (2002). Inverse ¹⁵N-metabolic labeling/mass spectrometry for comparative proteomics and rapid identification of protein markers/targets. *Rapid Commun. Mass Spectrom.* 16, 1389–1397. doi: 10.1002/rcm.725

Conflict of Interest: The authors declare that the research was conducted in the absence of any commercial or financial relationships that could be construed as a potential conflict of interest.

Publisher's Note: All claims expressed in this article are solely those of the authors and do not necessarily represent those of their affiliated organizations, or those of the publisher, the editors and the reviewers. Any product that may be evaluated in this article, or claim that may be made by its manufacturer, is not guaranteed or endorsed by the publisher.

Copyright © 2022 Reyes, Shrestha, Baker, Chalkley and Xu. This is an open-access article distributed under the terms of the Creative Commons Attribution License (CC BY). The use, distribution or reproduction in other forums is permitted, provided the original author(s) and the copyright owner(s) are credited and that the original publication in this journal is cited, in accordance with accepted academic practice. No use, distribution or reproduction is permitted which does not comply with these terms.