

UC Berkeley

UC Berkeley Previously Published Works

Title

Measurement of Collins asymmetries in inclusive production of charged pion pairs in $e+e-$ annihilation at BABAR

Permalink

<https://escholarship.org/uc/item/79d7q0mf>

Journal

Physical Review D, 90(5)

ISSN

2470-0010

Authors

Lees, JP
Poireau, V
Tisserand, V
[et al.](#)

Publication Date

2014-09-01

DOI

10.1103/physrevd.90.052003

Copyright Information

This work is made available under the terms of a Creative Commons Attribution License, available at <https://creativecommons.org/licenses/by/4.0/>

Peer reviewed

Measurement of Collins asymmetries in inclusive production of charged pion pairs in e^+e^- annihilation at BABAR

J. P. Lees,¹ V. Poireau,¹ V. Tisserand,¹ E. Grauges,² A. Palano,^{3a,3b} G. Eigen,⁴ B. Stugu,⁴ D. N. Brown,⁵ L. T. Kerth,⁵ Yu. G. Kolomensky,⁵ M. J. Lee,⁵ G. Lynch,⁵ H. Koch,⁶ T. Schroeder,⁶ C. Hearty,⁷ T. S. Mattison,⁷ J. A. McKenna,⁷ R. Y. So,⁷ A. Khan,⁸ V. E. Blinov,^{9a,9c} A. R. Buzykaev,^{9a} V. P. Druzhinin,^{9a,9b} V. B. Golubev,^{9a,9b} E. A. Kravchenko,^{9a,9b} A. P. Onuchin,^{9a,9c} S. I. Serednyakov,^{9a,9b} Yu. I. Skovpen,^{9a,9b} E. P. Solodov,^{9a,9b} K. Yu. Todyshev,^{9a,9b} A. N. Yushkov,^{9a} D. Kirkby,¹⁰ A. J. Lankford,¹⁰ M. Mandelkern,¹⁰ B. Dey,¹¹ J. W. Gary,¹¹ O. Long,¹¹ G. M. Vitug,¹¹ C. Campagnari,¹² M. Franco Sevilla,¹² T. M. Hong,¹² D. Kovalskiy,¹² J. D. Richman,¹² C. A. West,¹² A. M. Eisner,¹³ W. S. Lockman,¹³ B. A. Schumm,¹³ A. Seiden,¹³ D. S. Chao,¹⁴ C. H. Cheng,¹⁴ B. Echenard,¹⁴ K. T. Flood,¹⁴ D. G. Hitlin,¹⁴ P. Ongmongkolkul,¹⁴ F. C. Porter,¹⁴ R. Andreassen,¹⁵ Z. Huard,¹⁵ B. T. Meadows,¹⁵ B. G. Pushpawela,¹⁵ M. D. Sokoloff,¹⁵ L. Sun,¹⁵ P. C. Bloom,¹⁶ W. T. Ford,¹⁶ A. Gaz,¹⁶ U. Nauenberg,¹⁶ J. G. Smith,¹⁶ S. R. Wagner,¹⁶ R. Ayad,^{17,†} W. H. Toki,¹⁷ B. Spaan,¹⁸ R. Schwierz,¹⁹ D. Bernard,²⁰ M. Verderi,²⁰ S. Playfer,²¹ D. Bettoni,^{22a} C. Bozzi,^{22a} R. Calabrese,^{22a,22b} G. Cibinetto,^{22a,22b} E. Fioravanti,^{22a,22b} I. Garzia,^{22a,22b} E. Luppi,^{22a,22b} L. Piemontese,^{22a} V. Santoro,^{22a} R. Baldini-Ferroli,²³ A. Calcaterra,²³ R. de Sangro,²³ G. Finocchiaro,²³ S. Martellotti,²³ P. Patteri,²³ I. M. Peruzzi,^{23,‡} M. Piccolo,²³ M. Rama,²³ A. Zallo,²³ R. Contri,^{24a,24b} E. Guido,^{24a,24b} M. Lo Vetere,^{24a,24b} M. R. Monge,^{24a,24b} S. Passaggio,^{24a} C. Patrignani,^{24a,24b} E. Robutti,^{24a} B. Bhuyan,²⁵ V. Prasad,²⁵ M. Morii,²⁶ A. Adametz,²⁷ U. Uwer,²⁷ H. M. Lacker,²⁸ P. D. Dauncey,²⁹ U. Mallik,³⁰ C. Chen,³¹ J. Cochran,³¹ W. T. Meyer,³¹ S. Prell,³¹ A. V. Gritsan,³² N. Arnaud,³³ M. Davier,³³ D. Derkach,³³ G. Grosdidier,³³ F. Le Diberder,³³ A. M. Lutz,³³ B. Malaescu,^{33,§} P. Roudeau,³³ A. Stocchi,³³ G. Wormser,³³ D. J. Lange,³⁴ D. M. Wright,³⁴ J. P. Coleman,³⁵ J. R. Fry,³⁵ E. Gabathuler,³⁵ D. E. Hutchcroft,³⁵ D. J. Payne,³⁵ C. Touramanis,³⁵ A. J. Bevan,³⁶ F. Di Lodovico,³⁶ R. Sacco,³⁶ G. Cowan,³⁷ J. Bougher,³⁸ D. N. Brown,³⁸ C. L. Davis,³⁸ A. G. Denig,³⁹ M. Fritsch,³⁹ W. Gradl,³⁹ K. Griessinger,³⁹ A. Hafner,³⁹ E. Principe,³⁹ K. R. Schubert,³⁹ R. J. Barlow,^{40,||} G. D. Lafferty,⁴⁰ E. Behn,⁴¹ R. Cenci,⁴¹ B. Hamilton,⁴¹ A. Jawahery,⁴¹ D. A. Roberts,⁴¹ R. Cowan,⁴² D. Dujmic,⁴² G. Sciolla,⁴² R. Cheaib,⁴³ P. M. Patel,^{43,*} S. H. Robertson,⁴³ P. Biassoni,^{44a,44b} N. Neri,^{44a} F. Palombo,^{44a,44b} L. Cremaldi,⁴⁵ R. Godang,^{45,¶} P. Sonnek,⁴⁵ D. J. Summers,⁴⁵ M. Simard,⁴⁶ P. Taras,⁴⁶ G. De Nardo,^{47a,47b} D. Monorchio,^{47a,47b} G. Onorato,^{47a,47b} C. Sciacca,^{47a,47b} M. Martinelli,⁴⁸ G. Raven,⁴⁸ C. P. Jessop,⁴⁹ J. M. LoSecco,⁴⁹ K. Honscheid,⁵⁰ R. Kass,⁵⁰ J. Brau,⁵¹ R. Frey,⁵¹ N. B. Sinev,⁵¹ D. Strom,⁵¹ E. Torrence,⁵¹ E. Feltresi,^{52a,52b} M. Margoni,^{52a,52b} M. Morandin,^{52a} M. Posocco,^{52a} M. Rotondo,^{52a} G. Simi,^{52a} F. Simonetto,^{52a,52b} R. Stroili,^{52a,52b} S. Akar,⁵³ E. Ben-Haim,⁵³ M. Bomben,⁵³ G. R. Bonneau,⁵³ H. Briand,⁵³ G. Calderini,⁵³ J. Chauveau,⁵³ Ph. Leruste,⁵³ G. Marchiori,⁵³ J. Ocariz,⁵³ S. Sitt,⁵³ M. Biasini,^{54a,54b} E. Manoni,^{54a} S. Pacetti,^{54a,54b} A. Rossi,^{54a} C. Angelini,^{55a,55b} G. Batignani,^{55a,55b} S. Bettarini,^{55a,55b} M. Carpinelli,^{55a,55b,**} G. Casarosa,^{55a,55b} A. Cervelli,^{55a,55b} F. Forti,^{55a,55b} M. A. Giorgi,^{55a,55b} A. Lusiani,^{55a,55c} B. Oberhof,^{55a,55b} E. Paoloni,^{55a,55b} A. Perez,^{55a} G. Rizzo,^{55a,55b} J. J. Walsh,^{55a} D. Lopes Pegna,⁵⁶ J. Olsen,⁵⁶ A. J. S. Smith,⁵⁶ R. Faccini,^{57a,57b} F. Ferrarotto,^{57a} F. Ferroni,^{57a,57b} M. Gaspero,^{57a,57b} L. Li Gioi,^{57a} G. Piredda,^{57a} C. Bünger,⁵⁸ O. Grünberg,⁵⁸ T. Hartmann,⁵⁸ T. Leddig,⁵⁸ C. Voß,⁵⁸ R. Waldi,⁵⁸ T. Adye,⁵⁹ E. O. Olaiya,⁵⁹ F. F. Wilson,⁵⁹ S. Emery,⁶⁰ G. Hamel de Monchenault,⁶⁰ G. Vasseur,⁶⁰ Ch. Yèche,⁶⁰ F. Anulli,^{61,††} D. Aston,⁶¹ D. J. Bard,⁶¹ J. F. Benitez,⁶¹ C. Cartaro,⁶¹ M. R. Convery,⁶¹ J. Dorfan,⁶¹ G. P. Dubois-Felsmann,⁶¹ W. Dunwoodie,⁶¹ M. Ebert,⁶¹ R. C. Field,⁶¹ B. G. Fulsom,⁶¹ A. M. Gabareen,⁶¹ M. T. Graham,⁶¹ C. Hast,⁶¹ W. R. Innes,⁶¹ P. Kim,⁶¹ M. L. Kocian,⁶¹ D. W. G. S. Leith,⁶¹ P. Lewis,⁶¹ D. Lindemann,⁶¹ B. Lindquist,⁶¹ S. Luitz,⁶¹ V. Luth,⁶¹ H. L. Lynch,⁶¹ D. B. MacFarlane,⁶¹ D. R. Muller,⁶¹ H. Neal,⁶¹ S. Nelson,⁶¹ M. Perl,⁶¹ T. Pulliam,⁶¹ B. N. Ratcliff,⁶¹ A. Roodman,⁶¹ A. A. Salnikov,⁶¹ R. H. Schindler,⁶¹ A. Snyder,⁶¹ D. Su,⁶¹ M. K. Sullivan,⁶¹ J. Va'vra,⁶¹ A. P. Wagner,⁶¹ W. F. Wang,⁶¹ W. J. Wisniewski,⁶¹ M. Wittgen,⁶¹ D. H. Wright,⁶¹ H. W. Wulsin,⁶¹ V. Ziegler,⁶¹ W. Park,⁶² M. V. Purohit,⁶² R. M. White,^{62,‡‡} J. R. Wilson,⁶² A. Randle-Conde,⁶³ S. J. Sekula,⁶³ M. Bellis,⁶⁴ P. R. Burchat,⁶⁴ T. S. Miyashita,⁶⁴ E. M. T. Puccio,⁶⁴ M. S. Alam,⁶⁵ J. A. Ernst,⁶⁵ R. Gorodeisky,⁶⁶ N. Guttman,⁶⁶ D. R. Peimer,⁶⁶ A. Soffer,⁶⁶ S. M. Spanier,⁶⁷ J. L. Ritchie,⁶⁸ A. M. Ruland,⁶⁸ R. F. Schwitters,⁶⁸ B. C. Wray,⁶⁸ J. M. Izen,⁶⁹ X. C. Lou,⁶⁹ F. Bianchi,^{70a,70b} F. De Mori,^{70a,70b} A. Filippi,^{70a} D. Gamba,^{70a,70b} S. Zambito,^{70a,70b} L. Lanceri,^{71a,71b} L. Vitale,^{71a,71b} F. Martinez-Vidal,⁷² A. Oyanguren,⁷² P. Villanueva-Perez,⁷² H. Ahmed,⁷³ J. Albert,⁷³ Sw. Banerjee,⁷³ F. U. Bernlochner,⁷³ H. H. F. Choi,⁷³ G. J. King,⁷³ R. Kowalewski,⁷³ M. J. Lewczuk,⁷³ T. Lueck,⁷³ I. M. Nugent,⁷³ J. M. Roney,⁷³ R. J. Sobie,⁷³ N. Tasneem,⁷³ T. J. Gershon,⁷⁴ P. F. Harrison,⁷⁴ T. E. Latham,⁷⁴ H. R. Band,⁷⁵ S. Dasu,⁷⁵ Y. Pan,⁷⁵ R. Prepost,⁷⁵ and S. L. Wu⁷⁵

(BABAR Collaboration)

¹Laboratoire d'Annecy-le-Vieux de Physique des Particules (LAPP), Université de Savoie, CNRS/IN2P3, F-74941 Annecy-Le-Vieux, France

²Facultat de Física, Departament ECM, Universitat de Barcelona, E-08028 Barcelona, Spain

^{3a}INFN Sezione di Bari, I-70126 Bari, Italy

^{3b}Dipartimento di Fisica, Università di Bari, I-70126 Bari, Italy

- ⁴*University of Bergen, Institute of Physics, N-5007 Bergen, Norway*
- ⁵*Lawrence Berkeley National Laboratory and University of California, Berkeley, California 94720, USA*
- ⁶*Ruhr Universität Bochum, Institut für Experimentalphysik 1, D-44780 Bochum, Germany*
- ⁷*University of British Columbia, Vancouver, British Columbia V6T 1Z1, Canada*
- ⁸*Brunel University, Uxbridge, Middlesex UB8 3PH, United Kingdom*
- ^{9a}*Budker Institute of Nuclear Physics SB RAS, Novosibirsk 630090, Russia*
- ^{9b}*Novosibirsk State University, Novosibirsk 630090, Russia*
- ^{9c}*Novosibirsk State Technical University, Novosibirsk 630092, Russia*
- ¹⁰*University of California at Irvine, Irvine, California 92697, USA*
- ¹¹*University of California at Riverside, Riverside, California 92521, USA*
- ¹²*University of California at Santa Barbara, Santa Barbara, California 93106, USA*
- ¹³*University of California at Santa Cruz, Institute for Particle Physics, Santa Cruz, California 95064, USA*
- ¹⁴*California Institute of Technology, Pasadena, California 91125, USA*
- ¹⁵*University of Cincinnati, Cincinnati, Ohio 45221, USA*
- ¹⁶*University of Colorado, Boulder, Colorado 80309, USA*
- ¹⁷*Colorado State University, Fort Collins, Colorado 80523, USA*
- ¹⁸*Fakultät Physik, Technische Universität Dortmund, D-44221 Dortmund, Germany*
- ¹⁹*Technische Universität Dresden, Institut für Kern- und Teilchenphysik, D-01062 Dresden, Germany*
- ²⁰*Laboratoire Leprince-Ringuet, Ecole Polytechnique, CNRS/IN2P3, F-91128 Palaiseau, France*
- ²¹*University of Edinburgh, Edinburgh EH9 3JZ, United Kingdom*
- ^{22a}*INFN Sezione di Ferrara, I-44122 Ferrara, Italy*
- ^{22b}*Dipartimento di Fisica e Scienze della Terra, Università di Ferrara, I-44122 Ferrara, Italy*
- ²³*INFN Laboratori Nazionali di Frascati, I-00044 Frascati, Italy*
- ^{24a}*INFN Sezione di Genova, I-16146 Genova, Italy*
- ^{24b}*Dipartimento di Fisica, Università di Genova, I-16146 Genova, Italy*
- ²⁵*Indian Institute of Technology Guwahati, Guwahati, Assam 781 039, India*
- ²⁶*Harvard University, Cambridge, Massachusetts 02138, USA*
- ²⁷*Universität Heidelberg, Physikalisches Institut, D-69120 Heidelberg, Germany*
- ²⁸*Humboldt-Universität zu Berlin, Institut für Physik, D-12489 Berlin, Germany*
- ²⁹*Imperial College London, London SW7 2AZ, United Kingdom*
- ³⁰*University of Iowa, Iowa City, Iowa 52242, USA*
- ³¹*Iowa State University, Ames, Iowa 50011-3160, USA*
- ³²*Johns Hopkins University, Baltimore, Maryland 21218, USA*
- ³³*Laboratoire de l'Accélérateur Linéaire, IN2P3/CNRS et Université Paris-Sud 11, Centre Scientifique d'Orsay, F-91898 Orsay Cedex, France*
- ³⁴*Lawrence Livermore National Laboratory, Livermore, California 94550, USA*
- ³⁵*University of Liverpool, Liverpool L69 7ZE, United Kingdom*
- ³⁶*Queen Mary, University of London, London E1 4NS, United Kingdom*
- ³⁷*University of London, Royal Holloway and Bedford New College, Egham, Surrey TW20 0EX, United Kingdom*
- ³⁸*University of Louisville, Louisville, Kentucky 40292, USA*
- ³⁹*Johannes Gutenberg-Universität Mainz, Institut für Kernphysik, D-55099 Mainz, Germany*
- ⁴⁰*University of Manchester, Manchester M13 9PL, United Kingdom*
- ⁴¹*University of Maryland, College Park, Maryland 20742, USA*
- ⁴²*Laboratory for Nuclear Science, Massachusetts Institute of Technology, Cambridge, Massachusetts 02139, USA*
- ⁴³*McGill University, Montréal, Québec H3A 2T8, Canada*
- ^{44a}*INFN Sezione di Milano, I-20133 Milano, Italy*
- ^{44b}*Dipartimento di Fisica, Università di Milano, I-20133 Milano, Italy*
- ⁴⁵*University of Mississippi, Oxford, Mississippi 38677, USA*
- ⁴⁶*Physique des Particules, Université de Montréal, Montréal, Québec H3C 3J7, Canada*
- ^{47a}*INFN Sezione di Napoli, I-80126 Napoli, Italy*
- ^{47b}*Dipartimento di Scienze Fisiche, Università di Napoli Federico II, I-80126 Napoli, Italy*
- ⁴⁸*NIKHEF, National Institute for Nuclear Physics and High Energy Physics, NL-1009 DB Amsterdam, The Netherlands*
- ⁴⁹*University of Notre Dame, Notre Dame, Indiana 46556, USA*
- ⁵⁰*Ohio State University, Columbus, Ohio 43210, USA*
- ⁵¹*University of Oregon, Eugene, Oregon 97403, USA*
- ^{52a}*INFN Sezione di Padova, I-35131 Padova, Italy*
- ^{52b}*Dipartimento di Fisica, Università di Padova, I-35131 Padova, Italy*

- ⁵³Laboratoire de Physique Nucléaire et de Hautes Energies, IN2P3/CNRS,
Université Pierre et Marie Curie-Paris 6, Université Denis Diderot-Paris 7, F-75252 Paris, France
- ^{54a}INFN Sezione di Perugia, I-06123 Perugia, Italy
- ^{54b}Dipartimento di Fisica, Università di Perugia, I-06123 Perugia, Italy
- ^{55a}INFN Sezione di Pisa, I-56127 Pisa, Italy
- ^{55b}Dipartimento di Fisica, Università di Pisa, I-56127 Pisa, Italy
- ^{55c}Scuola Normale Superiore di Pisa, I-56127 Pisa, Italy
- ⁵⁶Princeton University, Princeton, New Jersey 08544, USA
- ^{57a}INFN Sezione di Roma, I-00185 Roma, Italy
- ^{57b}Dipartimento di Fisica, Università di Roma La Sapienza, I-00185 Roma, Italy
- ⁵⁸Universität Rostock, D-18051 Rostock, Germany
- ⁵⁹Rutherford Appleton Laboratory, Chilton, Didcot, Oxon OX11 0QX, United Kingdom
- ⁶⁰CEA, Irfu, SPP, Centre de Saclay, F-91191 Gif-sur-Yvette, France
- ⁶¹SLAC National Accelerator Laboratory, Stanford, California 94309, USA
- ⁶²University of South Carolina, Columbia, South Carolina 29208, USA
- ⁶³Southern Methodist University, Dallas, Texas 75275, USA
- ⁶⁴Stanford University, Stanford, California 94305-4060, USA
- ⁶⁵State University of New York, Albany, New York 12222, USA
- ⁶⁶School of Physics and Astronomy, Tel Aviv University, Tel Aviv 69978, Israel
- ⁶⁷University of Tennessee, Knoxville, Tennessee 37996, USA
- ⁶⁸University of Texas at Austin, Austin, Texas 78712, USA
- ⁶⁹University of Texas at Dallas, Richardson, Texas 75083, USA
- ^{70a}INFN Sezione di Torino, I-10125 Torino, Italy
- ^{70b}Dipartimento di Fisica, Università di Torino, I-10125 Torino, Italy
- ^{71a}INFN Sezione di Trieste, I-34127 Trieste, Italy
- ^{71b}Dipartimento di Fisica, Università di Trieste, I-34127 Trieste, Italy
- ⁷²IFIC, Universitat de Valencia-CSIC, E-46071 Valencia, Spain
- ⁷³University of Victoria, Victoria, British Columbia V8W 3P6, Canada
- ⁷⁴Department of Physics, University of Warwick, Coventry CV4 7AL, United Kingdom
- ⁷⁵University of Wisconsin, Madison, Wisconsin 53706, USA
- (Received 24 September 2013; published 9 September 2014)

We present measurements of Collins asymmetries in the inclusive process $e^+e^- \rightarrow \pi\pi X$, where π stands for charged pions, at a center-of-mass energy of 10.6 GeV. We use a data sample of 468 fb^{-1} collected by the *BABAR* experiment at the PEP-II *B* factory at SLAC, and consider pairs of charged pions produced in opposite hemispheres of hadronic events. We observe clear asymmetries in the distributions of the azimuthal angles in two distinct reference frames. We study the dependence of the asymmetry on several kinematic variables, finding that it increases with increasing pion momentum and momentum transverse to the analysis axis, and with increasing angle between the thrust and beam axis.

DOI: 10.1103/PhysRevD.90.052003

PACS numbers: 13.66.Bc, 13.87.Fh, 13.88.+e, 14.65.-q

I. INTRODUCTION

Parton fragmentation functions describe the probability for a parton to fragment into a hadron carrying a certain

fraction z of the parton momentum. These functions are denoted $D_h^i(z)$, where i represents the fragmenting parton ($g, u, \bar{u}, d, \bar{d}, \dots$), and h is the produced hadron. Since the $D_h^i(z)$ incorporate the long distance, nonperturbative physics of the hadronization processes, they cannot be calculated in perturbative QCD, but can be evolved from a starting distribution at a defined energy scale. Fragmentation processes have been studied in lepton-hadron and hadron-hadron scattering, as well as in e^+e^- annihilation, which provides the cleanest environment since no hadrons are present in the initial state. Due to the large amount of experimental data collected at several e^+e^- facilities, mainly LEP [1–3] and SLC [4–6] at high energies, and, recently, PEP-II [7] and KEKB [8] at the center-of-mass energy $\sqrt{s} \sim 10 \text{ GeV}$, the unpolarized functions are presently well known.

*Deceased.

†Present address: University of Tabuk, Tabuk 71491, Saudi Arabia.

‡Also at Università di Perugia, Dipartimento di Fisica, Perugia, Italy.

§Present address: Laboratoire de Physique Nucléaire et de Hautes Energies, IN2P3/CNRS, Paris, France.

||Present address: University of Huddersfield, Huddersfield HD1 3DH, United Kingdom.

¶Present address: University of South Alabama, Mobile, Alabama 36688, USA.

**Also at Università di Sassari, Sassari, Italy.

††Also at INFN Sezione di Roma, Roma, Italy.

‡‡Now at Universidad Técnica Federico Santa María, Valparaíso 2390123, Chile.

Transverse spin-dependent effects in fragmentation processes were first proposed by Collins [9,10], who introduced the chiral-odd polarized Collins fragmentation function H_1^\perp . It describes the relation between the transverse spin of the fragmenting quark and the azimuthal distribution of final-state hadrons around the quark momentum (spin-orbit correlation). In the transverse-momentum approach, H_1^\perp depends on the hadron fractional energy $z = 2E_h/\sqrt{s}$, where E_h and $\sqrt{s}/2$ are, respectively, the hadron and beam energy in the center-of-mass system, and on the magnitude of the hadron transverse momentum \mathbf{P}_h^\perp with respect to the three-momentum of the fragmenting quark.

The number density for finding a spinless hadron h , with mass M_h , produced from a transversely polarized quark (q^\uparrow) is defined in terms of the leading-twist unpolarized D_1^q , and Collins $H_1^{\perp q}$ fragmentation functions, as [11]

$$D_h^{q\uparrow}(z, \mathbf{P}_h^\perp) = D_1^q(z, P_h^{\perp 2}) + H_1^{\perp q}(z, P_h^{\perp 2}) \frac{(\hat{\mathbf{k}} \times \mathbf{P}_h^\perp) \cdot \mathbf{S}_q}{zM_h} \quad (1)$$

The term containing the Collins function depends on the spin vector of the quark \mathbf{S}_q , and introduces an azimuthal asymmetry in the distribution of hadrons around the quark three-momentum direction $\hat{\mathbf{k}}$. The triple product of Eq. (1), in fact, produces a $\cos\phi$ modulation, where ϕ is the azimuthal angle between the plane perpendicular to the quark spin, and the plane determined by \mathbf{P}_h^\perp and $\hat{\mathbf{k}}$, as shown in Fig. 1. In the literature, the amplitude of this modulation is called the Collins asymmetry or the Collins effect.

Experimental evidence for a nonzero Collins function was found by the HERMES [12,13] and COMPASS [14,15] Collaborations, from the analysis of semi-inclusive deep inelastic scattering (SIDIS) of leptons off transversely polarized hydrogen and/or deuteron targets. The cross sections for these processes are proportional to the convolution of the Collins function and the chiral-odd transversity function [16]. The latter is the least well known among the twist-two parton distribution functions of the

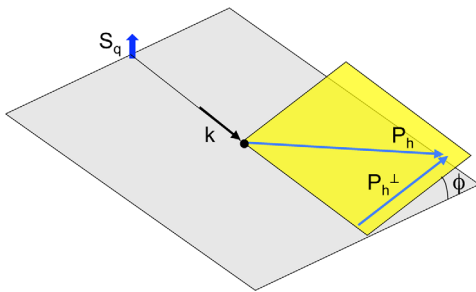


FIG. 1 (color online). Definition of the azimuthal angle ϕ for a quark with transverse spin \mathbf{S}_q which fragments into a spinless hadron of momentum \mathbf{P}_h with a component \mathbf{P}_h^\perp transverse to the quark momentum \mathbf{k} .

nucleon, and plays a crucial role in understanding the spin properties. In order to extract the transversity and the Collins functions from SIDIS data, independent measurement of at least one of them is needed.

In e^+e^- annihilation to a quark-antiquark pair, each quark spin is unknown: the Collins asymmetry in a single jet ($q \rightarrow hX$) will be zero. However, the Collins effect can be observed when the products of the quark and antiquark fragmentation are simultaneously considered. Experimentally, this is achieved by studying the process $e^+e^- \rightarrow q\bar{q} \rightarrow h_1 h_2 X$, where h_1 (h_2) is a spinless hadron (π or K) coming from the fragmenting quark (\bar{q}). Events with a two-jet topology are selected, and the correlation between the azimuthal angles of pairs of hadrons detected in opposite hemispheres with respect to the plane perpendicular to the jet axis is analyzed. The resulting azimuthal asymmetry is proportional to the product of two Collins functions.

The first efforts to measure Collins asymmetries in e^+e^- annihilation, by studying $Z^0 \rightarrow 2$ jets events, were performed by the DELPHI Collaboration [17], while the first observation was obtained by the Belle Collaboration [18–20], from a study of inclusive production of charged pion pairs at a center-of-mass (c.m.) energy of approximately 10.6 GeV. Assuming the universality of the Collins function [21,22], a global analysis of SIDIS and e^+e^- annihilation data has been carried out by the authors of Refs. [23,24], allowing the simultaneous extraction of the transversity and Collins functions for the pion system.

We report the measurements of the azimuthal modulation due to the Collins effect (Collins asymmetries) in the process $e^+e^- \rightarrow q\bar{q} \rightarrow \pi\pi X$, where π stands for charged pion and q for a light quark: u, d, s . We reproduce the Belle analysis [19,20] of the azimuthal asymmetries as a function of the pions fractional energy in two reference frames. We also perform a new measurement of the asymmetries as a function of the transverse momentum p_t of pions with respect to the analysis axis.

II. ANALYSIS OVERVIEW

Charged pions are selected in opposite jets of hadronic events according to the thrust axis of the event [25,26], which permits the identification of two hemispheres (called 1 and 2, respectively, along and opposite to the thrust axis direction) and to label the two pions as π_1 and π_2 . The analysis is performed in two convenient reference frames: the thrust reference frame, defined in Sec. II A, and the second hadron momentum frame, defined in Sec. II B. This choice follows the scheme outlined by authors of Refs. [27,28], and allows a direct comparison of our results with the Belle measurements. Section III summarizes the data sets used, while Sec. IV describes in detail the event and track selection. The analysis method is discussed in Secs. V and VI. Dilutions of the asymmetries induced by background sources and by detector effects not related to

the Collins function are discussed in Secs. VII and VIII, respectively. Studies of possible systematic effects are summarized in Sec. IX, while the final results on Collins asymmetry for light quark fragmentation are reported in Sec. X.

A. Thrust reference frame: RF12

As mentioned in Sec. I, the Collins asymmetry manifests itself as an azimuthal modulation of two final state pions around the fragmenting quark-antiquark momentum. The $q\bar{q}$ direction is not accessible to a direct measurement and is approximated by the thrust axis of the event [26]. The kinematics in the e^+e^- c.m. system corresponding to $e^+e^- \rightarrow \pi_1\pi_2 X$, together with the definition of the two azimuthal angles, are schematically represented in Fig. 2. We refer to this frame as the thrust reference frame or RF12, since the thrust axis serves as reference axis for the azimuthal angles. The correlation of the quark and antiquark Collins functions in opposite hemispheres gives a product of two modulations for the azimuthal angles ϕ_1 and ϕ_2 , resulting in a $\cos(\phi_1 + \phi_2)$ modulation. The azimuthal angles are defined as

$$\phi_{1,2} = \text{sign}[\hat{\mathbf{n}} \cdot \{(\hat{\mathbf{u}} \times \hat{\mathbf{n}}) \times (\hat{\mathbf{n}} \times \hat{\mathbf{P}}_{1,2})\}] \times \arccos\left(\frac{\hat{\mathbf{u}} \times \hat{\mathbf{n}}}{|\hat{\mathbf{u}} \times \hat{\mathbf{n}}|} \cdot \frac{\hat{\mathbf{n}} \times \mathbf{P}_{1,2}}{|\hat{\mathbf{n}} \times \mathbf{P}_{1,2}|}\right), \quad (2)$$

$$\frac{d\sigma(e^+e^- \rightarrow \pi_1\pi_2 X)}{dz_1 dz_2 d\phi_1 d\phi_2 d\cos\theta_{\text{th}}} = \sum_{q,\bar{q}} \frac{3\alpha^2 e_q^2}{s} \frac{z_1^2 z_2^2}{4} \times \{(1 + \cos^2\theta_{\text{th}})D_1^{q,[0]}(z_1)\bar{D}_1^{\bar{q},[0]}(z_2) + \sin^2\theta_{\text{th}} \cos(\phi_1 + \phi_2)H_1^{\perp q,[1]}(z_1)\bar{H}_1^{\perp \bar{q},[1]}(z_2)\}, \quad (3)$$

where the summation runs over all quark flavors accessible at the c.m. energy \sqrt{s} , e_q is the charge of the quark q in units of e , and the antiquark fragmentation function is denoted by a bar. The so-called transverse moments of the fragmentation functions are defined as [28]

$$F^{[n]}(z) = \int d|\mathbf{k}_T^2| \left(\frac{|\mathbf{k}_T|}{M_\pi}\right)^n F(z, \mathbf{k}_T^2), \quad (4)$$

with $F \equiv D_1^q, \bar{D}_1^{\bar{q}}, H_1^{\perp q}$, and $\bar{H}_1^{\perp \bar{q}}$. In this equation, the pion transverse momentum has been rewritten in terms of the quark intrinsic transverse momentum \mathbf{k}_T^{\perp} : $\mathbf{P}_h^{\perp} = z\mathbf{k}_T^{\perp}$, and M_π is the pion mass. The Collins asymmetry can be extracted by measuring the cosine modulation of the distribution of the quantity $(\phi_1 + \phi_2)$ on top of the uniform

¹Throughout the paper we use the subscript T to denote the transverse component of a vector to the di-pion axis in the frame where they are collinear, while the superscript \perp indicates the component transverse to the $q\bar{q}$ axis.

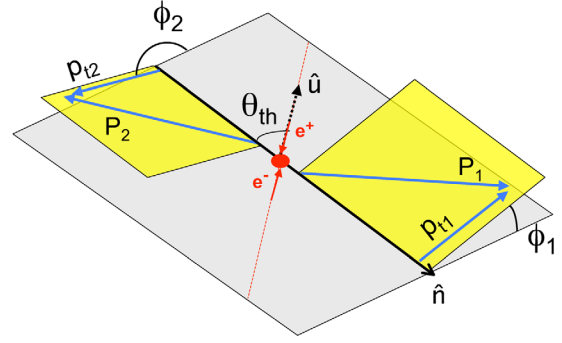


FIG. 2 (color online). Thrust reference frame (RF12). The azimuthal angles ϕ_1 and ϕ_2 are the angles between the scattering plane and the transverse pion momenta \mathbf{p}_{ti} around the thrust axis. The polar angle θ_{th} is defined as the angle between the beam axis and the thrust axis $\hat{\mathbf{n}}$. The pion transverse momenta \mathbf{p}_{ti} used in the analysis differ from the corresponding \mathbf{P}_h^{\perp} , which refer to the true $q\bar{q}$ direction.

where $\hat{\mathbf{u}}$ is a unit vector defined along the direction of the electron beam, $\hat{\mathbf{n}}$ is the thrust axis, and $\mathbf{P}_{1,2}$ is the three-momentum vector of the pion detected in the first (π_1) or in the second (π_2) hemisphere.

The differential cross section depends on the fractional energies z_1 and z_2 of the two pions, and on the sum of the azimuthal angles ϕ_1 and ϕ_2 . It can be written as [28]

distribution due to the unpolarized part of the fragmentation function. Dividing the full $(\phi_1 + \phi_2)$ range into one hundred intervals, we define the normalized azimuthal distribution as

$$R_{12}(\phi_1 + \phi_2) = \frac{N(\phi_1 + \phi_2)}{\langle N_{12} \rangle}, \quad (5)$$

with $N(\phi_1 + \phi_2)$ the di-pion yield in each $(\phi_1 + \phi_2)$ subdivision, and $\langle N_{12} \rangle$ the average bin contents.

B. Second-pion reference frame: RF0

The azimuthal asymmetries can also be measured in a different reference frame: Following Ref. [27], we use the direction of the observed pion π_2 as the reference axis, and we define the scattering plane by the beam axis and the momentum \mathbf{P}_2 of that pion, as illustrated in Fig. 3. Also in this frame, the kinematic variables are calculated in the e^+e^- c.m. system, but only one azimuthal angle, ϕ_0 , is defined:

$$\phi_0 = \text{sign}[\mathbf{P}_2 \cdot \{(\hat{\mathbf{u}} \times \mathbf{P}_2) \times (\mathbf{P}_2 \times \mathbf{P}_1)\}] \times \arccos\left(\frac{\hat{\mathbf{u}} \times \mathbf{P}_2 \cdot \mathbf{P}_2 \times \mathbf{P}_1}{|\hat{\mathbf{u}} \times \mathbf{P}_2| |\mathbf{P}_2 \times \mathbf{P}_1|}\right). \quad (6)$$

$$\frac{d\sigma(e^+e^- \rightarrow \pi_1\pi_2 X)}{dz_1 dz_2 d^2\mathbf{q}_T d\cos(\theta_2) d\phi_0} = \frac{3\alpha^2 z_1^2 z_2^2}{s} \times \left\{ (1 + \cos^2\theta_2) \mathcal{F}(D_1(z_1)\bar{D}_1(z_2)) + \sin^2\theta_2 \cos(2\phi_0) \times \mathcal{F}\left[(2\hat{\mathbf{h}} \cdot \mathbf{k}_T \hat{\mathbf{h}} \cdot \mathbf{p}_T - \mathbf{k}_T \cdot \mathbf{p}_T) \frac{H_1^+(z_1)\bar{H}_1^+(z_2)}{M_\pi^2}\right] \right\}, \quad (7)$$

where $|\mathbf{q}_T| = Q_T$ is the transverse momentum of the virtual photon from e^+e^- annihilation in the frame where P_1 and P_2 are collinear [28]. \mathcal{F} is a convolution integral over the transverse momenta $\mathbf{P}_1^\perp = z_1\mathbf{k}_T$ and $\mathbf{P}_2^\perp = z_2\mathbf{p}_T$, with \mathbf{k}_T and \mathbf{p}_T the transverse momenta of the two fragmenting quarks,

$$\mathcal{F}(X\bar{X}) = \sum_{a,\bar{a}} e_a^2 \int d^2\mathbf{k}_T d^2\mathbf{p}_T \delta^2(\mathbf{p}_T + \mathbf{k}_T - \mathbf{q}_T) \times X(z_1, z_1^2\mathbf{k}_T^2) \bar{X}(z_2, z_2^2\mathbf{p}_T^2), \quad (8)$$

and $\hat{\mathbf{h}}$ is the unit vector in the direction of the transverse momentum of the first hadron relative to the axis defined by the second hadron.

In this frame, the modulation due to the Collins effect is in the cosine of twice the azimuthal angle ϕ_0 , and the normalized distribution is defined as

$$R_0(2\phi_0) = \frac{N(2\phi_0)}{\langle N_0 \rangle}. \quad (9)$$

The differential cross sections in Eq. (3) and Eq. (7) for the two reference frames are related to each other. Integrating the first equation over ϕ_1 and ϕ_2 , and the second over ϕ_0 and \mathbf{q}_T , the same unpolarized cross section is obtained. A similar relation exists for the Collins contributions. However, due to the additional convolution

We refer to this frame as the second-pion reference frame, or RF0. At leading order in the strong coupling α_s , the differential cross section is given by [27]

over the transverse momentum \mathbf{q}_T , the intrinsic transverse momentum dependence of the Collins function should be known to exploit it. The majority of authors assume that the Collins function is a Gaussian in k_T , as is the unpolarized fragmentation function, with a different width from the unpolarized case. More details can be found, for example, in Refs. [29–31].

C. Unlike, like, and charged pion pairs

The possibility to select pion pairs with equal or opposite charges allows sensitivity to “favored” and “disfavored” fragmentation processes. A favored fragmentation function describes the fragmentation of a quark of flavor q into a hadron containing a valence quark of the same flavor: for example, $u \rightarrow \pi^+$ and $d \rightarrow \pi^-$. Vice versa, we refer to $u \rightarrow \pi^-$ and $d \rightarrow \pi^+$ as disfavored fragmentation processes. Therefore, the production of pion pairs with opposite charge from the fragmentation of a $u\bar{u}$ pair ($e^+e^- \rightarrow u\bar{u} \rightarrow \pi^\pm\pi^\mp X$) can proceed through two favored fragmentation processes ($u \rightarrow \pi^+$ and $\bar{u} \rightarrow \pi^-$) or through two disfavored fragmentation processes ($u \rightarrow \pi^-$ and $\bar{u} \rightarrow \pi^+$). Neglecting heavy quark fragmentation and introducing the favored functions $D_u^{\text{fav}}(z) = D_u^{\pi^+}(z) = D_d^{\pi^-}(z)$, and $\bar{D}^{\text{fav}}(z) = D_u^{\pi^-}(z) = D_d^{\pi^+}(z)$, as well as the disfavored functions $D^{\text{dis}}(z) = D_u^{\pi^-}(z) = D_d^{\pi^+}(z) = D_s^{\pi^\pm}(z)$ and $\bar{D}^{\text{dis}}(z) = D_u^{\pi^+}(z) = D_d^{\pi^-}(z) = D_s^{\pi^\pm}(z)$, the cross section for charged pion pair production can be written as [31]

$$\begin{aligned} N^U(\phi) &= \frac{d\sigma(e^+e^- \rightarrow \pi^\pm\pi^\mp X)}{d\Omega dz_1 dz_2} \propto \frac{5}{9} D^{\text{fav}}(z_1)\bar{D}^{\text{fav}}(z_2) + \frac{7}{9} D^{\text{dis}}(z_1)\bar{D}^{\text{dis}}(z_2) \\ N^L(\phi) &= \frac{d\sigma(e^+e^- \rightarrow \pi^\pm\pi^\pm X)}{d\Omega dz_1 dz_2} \propto \frac{5}{9} D^{\text{fav}}(z_1)\bar{D}^{\text{dis}}(z_2) + \frac{5}{9} D^{\text{dis}}(z_1)\bar{D}^{\text{fav}}(z_2) + \frac{2}{9} D^{\text{dis}}(z_1)\bar{D}^{\text{dis}}(z_2) \\ N^C(\phi) &= \frac{d\sigma(e^+e^- \rightarrow \pi\pi X)}{d\Omega dz_1 dz_2} = N^U(\phi) + N^L(\phi) \propto \frac{5}{9} [D^{\text{fav}}(z_1) + D^{\text{dis}}(z_1)] [\bar{D}^{\text{fav}}(z_2) + \bar{D}^{\text{dis}}(z_2)] + \frac{4}{9} D^{\text{dis}}(z_1)\bar{D}^{\text{dis}}(z_2) \end{aligned} \quad (10)$$

where π stands for a generic charged pion, ϕ is the azimuthal angle $\phi_1 + \phi_2$ in RF12 or ϕ_0 in RF0, $d\Omega = d\phi d\cos\theta$ with θ the polar angle of the analysis axis, and the upper index indicates unlike (U), like (L), and charged (C) sign pion pairs.

III. BABAR EXPERIMENT AND DATA SAMPLE

The results presented here are based on a sample of data collected with the BABAR detector at the PEP-II asymmetric-energy e^+e^- collider, at the SLAC National Accelerator Laboratory. A total integrated luminosity of

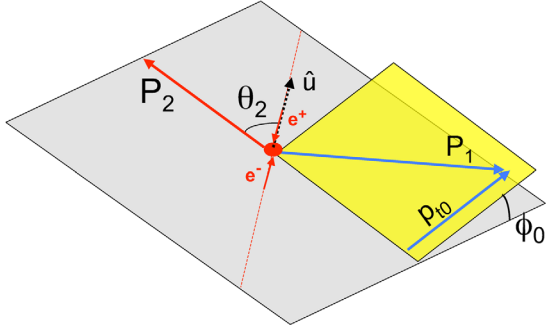


FIG. 3 (color online). Second-pion reference frame (RF0). The azimuthal angle ϕ_0 is defined as the angle between the plane spanned by the beam axis and the second-pion momentum \mathbf{P}_2 , and the transverse momentum \mathbf{p}_{10} of the first pion around the second-pion direction. The polar angle θ_2 is defined as the angle between the beam axis and the momentum \mathbf{P}_2 of the second pion.

about 468 fb^{-1} [32] is used, consisting of 424 fb^{-1} collected at the peak of the $\Upsilon(4S)$ resonance, and about 44 fb^{-1} collected 40 MeV below the peak.

The *BABAR* detector is described in detail in references [33,34]. Charged particle momenta are measured by a combination of a 5-layer, double-sided silicon vertex tracker (SVT), and a 40-layer drift chamber (DCH) that covers 92% of the solid angle in the c.m. frame, both located inside a 1.5 T superconducting solenoidal magnet. Discrimination between charged pions, kaons, and protons is obtained from measurements of the specific ionization (dE/dx) in the tracking system, and from the Cherenkov light collected by an internally reflecting ring-imaging Cherenkov detector (DIRC). The DIRC covers 84% of the c.m. solid angle in the central region of the *BABAR* detector and has a 95% (95%) identification efficiency for pions (kaons) with momenta above 1.5 GeV .² Photons and electrons are identified and their energies measured with a high resolution CsI(Tl) crystal electromagnetic calorimeter. Muons are identified in the instrumented flux return, which consists of 18 layers of steel interleaved with single-gap resistive plate chambers or limited-streamer tubes.

Detailed Monte Carlo (MC) simulation is used to test and optimize the selection criteria, to study the detector acceptance, and to estimate the contribution of various background sources. The simulation package JETSET [35] is used to generate hadronic events in nonresonant e^+e^- annihilation. Separate MC samples are generated for light quarks, $e^+e^- \rightarrow q\bar{q}$ ($q = u, d, s$), called generic *uds* MC, and charm quarks, $e^+e^- \rightarrow c\bar{c}$. Samples of $B\bar{B}$ events with generic *B* decays are generated with the EVTGEN [36] package. Finally, $\tau^+\tau^-$ and $\mu^+\mu^-$ event samples are produced with the KK2F [37] generator, and $\mu^+\mu^-\gamma$ events with AFKQED [38]. The generated events undergo a full detector simulation based on GEANT4 [39] and are

analyzed in the same way as the experimental data. No transverse spin effects are implemented in the MC generation, so it can be used to evaluate detector biases. In addition, the *uds* MC samples are reweighted to simulate Collins asymmetries and to study the analyzing power of the method.

IV. EVENT AND TRACK SELECTION

We focus on the measurement of the Collins effect in light quark fragmentation, as the helicity is conserved only in the approximation of massless quarks, and the correlation between the fragmenting quark and antiquark may be lost for heavy quarks. In this section, we summarize the event and track selection requirements.

Multihadronic events are selected by requiring at least three reconstructed charged particles and the value of the second divided by the zeroth Fox-Wolfman moment [40], calculated from charged tracks only, $R_2' < 0.98$. To suppress backgrounds from $e^+e^- \rightarrow \tau^+\tau^-$, $\gamma\gamma$ processes, and events characterized by emission of a very energetic photon via initial state radiation, we require the visible energy of the event in the laboratory frame (E_{vis}), defined as the sum of the energies of all reconstructed charged tracks and neutral candidates, to be higher than 7 GeV.

Only good-quality reconstructed tracks with momenta transverse to the beam direction of at least 0.1 GeV are considered for the asymmetry measurements. Every track is required to originate from the vicinity of the interaction point (IP) by requiring the distance of closest approach to the IP in the transverse plane $d_{XY} < 0.2 \text{ cm}$ and along the electron beam $|d_Z| < 1.5 \text{ cm}$, and to fall within the detector acceptance region: $0.41 < \theta_{\text{lab}} < 2.54 \text{ rad}$, where θ_{lab} is the polar angle of the track with respect to the beamline axis.

The thrust of the event is calculated using tracks with relaxed cuts $d_{XY} < 1.5 \text{ cm}$ and $|d_Z| < 10 \text{ cm}$, as well as neutral candidates lying within the calorimeter fiducial region with an energy greater than 0.030 GeV. To avoid possible biases originating from the different forward/backward detector configuration, the sign of the thrust axis is chosen at random.

Since the correlation between the q and the \bar{q} spin is lost in the case of emission of energetic gluons, we select the two-jet topology and suppress $e^+e^- \rightarrow q\bar{q}g$ events by requiring a value of the event thrust $T > 0.8$. As shown in Fig. 4 the distribution of the thrust for *uds* events peaks at values higher than 0.85, but has a long tail at lower values, which is mainly due to hard gluon radiation. The requirement $T > 0.8$ also removes the majority of the more spherical $B\bar{B}$ events produced in $\Upsilon(4S)$ decays. Events with charm quarks have a shape similar to the light quarks; their contribution to the asymmetry is evaluated and subtracted as described in Sec. VII.

Events from the $e^+e^- \rightarrow \tau^+\tau^-$ reaction populate the region at higher thrust values T and lower E_{vis} , as is evident from Fig. 5, which shows a scatter plot of E_{vis} vs T for

²Natural units are used throughout this article.

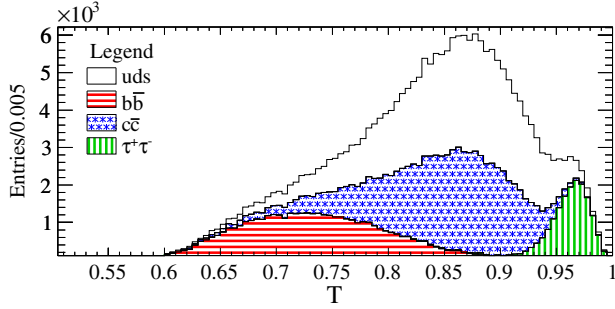


FIG. 4 (color online). Thrust distributions for simulated events under the $Y(4S)$ resonance for multihadronic events with at least one pair of good quality tracks: $e^+e^- \rightarrow B\bar{B}$ (horizontal lines), $e^+e^- \rightarrow c\bar{c}$ (asterisks), $e^+e^- \rightarrow q\bar{q}$, $q = uds$ (white histogram) and $e^+e^- \rightarrow \tau\tau$ (vertical lines). The samples are normalized to an arbitrary luminosity.

events having at least one good hadron pair. The small accumulation visible at lower energies and $T > 0.94$ is due to $\tau^+\tau^-$ events, and it is removed by applying a cut around this region, as indicated by the line in Fig. 5.

Radiative $e^+e^- \rightarrow e^+e^-\gamma$ and $e^+e^- \rightarrow \mu^+\mu^-\gamma$ events are the sources of the background peaking at $E_{\text{vis}} = 12$ GeV and concentrated in particular at high T . This kind of background is suppressed by requiring at least three charged hadrons in the event. However, some $\mu^+\mu^-\gamma$ events, with the initial state photon converting to a e^+e^- pair, can pass this selection. These events are characterized by small multiplicity and by two very energetic muons. We reduce this contamination to a negligible level by requiring that for events with multiplicity lower than five, the two most energetic tracks are not identified as muons, and no electrons are present.

Reconstructed tracks in the selected events are used for the study of the Collins asymmetries if they are identified as pions and fail to pass specific muon and electron selectors. The efficiencies estimated for the latter are about 70% and 98%, and the pion misidentification rate of about 2% and 4%, for muons and electrons, respectively.

Two-body decays of $b\bar{b}$ bound states, mainly produced via initial state radiation, generate a significant amount of unlike-sign pairs, with both tracks of c.m. momentum above 4.5 GeV. On the other hand, we expect to have very small signal from fragmentation processes with two such energetic tracks. In particular no like-sign pairs are observed in the data sample with z_1 and z_2 above 0.9. We therefore limit the study to tracks with $z < 0.9$.

The residual contributions of all other background sources ($c\bar{c}$, $B\bar{B}$, and $\tau^+\tau^-$) are evaluated, and the measured asymmetry corrected as described in Sec. VII.

The fragmentation functions depend on the light cone momentum fraction z of the produced hadron with respect to the fragmenting quark [27], which is equivalent to the fractional energy at large c.m. energy and not too small values of z [23],

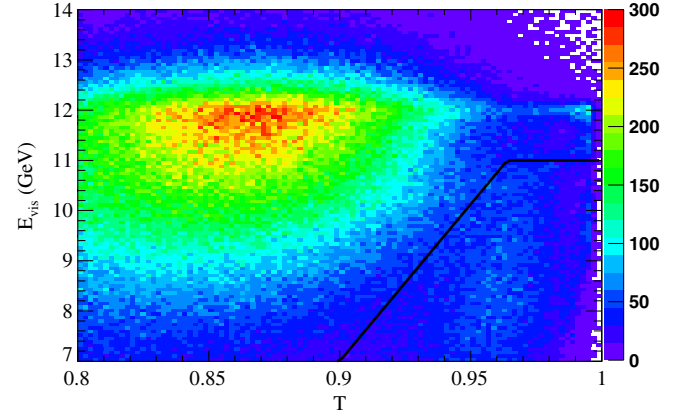


FIG. 5 (color online). Total visible energy of the event in the laboratory frame vs the thrust value for the on-resonance data sample. The events at high thrust value and low total energy are due to the $e^+e^- \rightarrow \tau^+\tau^-$ process. The black line is the cut applied in the analysis in order to remove this background. The peak at $E_{\text{vis}} \sim 12$ GeV and high thrust values, is due to radiative Bhabha and $\mu^+\mu^-(\gamma)$ events.

$$\frac{2E_h}{\sqrt{s}} = z + \frac{P_{\perp}^2}{zs} \simeq z.$$

It may be of interest to extend the study also for very low z values, in order to assess when this approximation fails. On the other hand, low momentum tracks pose severe experimental difficulties due to the association of the hadrons to the incorrect jet. For these reasons, the measurement of Collins asymmetry is performed only for candidate pions with $z > 0.15$.

The selected pions are separated in opposite hemispheres according to the thrust axis (\hat{n}), and are combined if they satisfy the following condition

$$W_{\text{hemi}} = (\mathbf{P}_1 \cdot \hat{n})(\mathbf{P}_2 \cdot \hat{n}) < 0, \quad (11)$$

where $\mathbf{P}_{1,2}$ are the pions momenta. For pairs with values of W_{hemi} near to zero there is a higher probability that one of the two tracks has been assigned to the wrong hemisphere. This effect is particularly evident for pions with low fractional energies. The requirement that the pions are emitted within a cone of 45° around the thrust axis removes the ambiguous tracks.

One of the most important contributions to azimuthal asymmetries not connected to the Collins effect originates from low energy gluon radiation $e^+e^- \rightarrow q\bar{q}g$, which is not completely removed by the event selection. As reported in Refs. [28,41], the angular distribution of the gluon radiation process $e^+e^- \rightarrow q\bar{q}g \rightarrow h_1h_2X$ is given by

$$\frac{dN}{d\Omega} \propto \frac{Q_t^2}{s + Q_t^2} \sin^2\theta \cos(2\phi). \quad (12)$$

In addition, all the formalism used so far is valid in the region where the transverse momentum Q_t is small

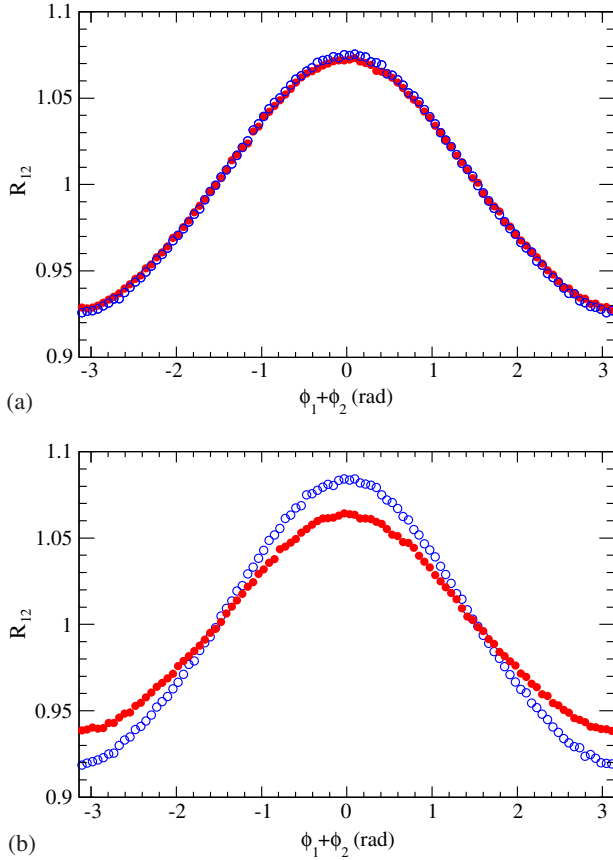


FIG. 6 (color online). Normalized azimuthal distributions for like-sign (R^L , full circles) and unlike-sign (R^U , open circles) pion pairs, for (a) MC simulation and (b) data, in RF12.

compared to $\sqrt{s}(Q_t^2 \ll s)$ [28], and a safe compromise is to require $Q_t < 3.5$ GeV.

The same selection is applied to same-charge and opposite-charge pion pairs. About 10^8 pion pairs are selected and used in the analysis.

V. NORMALIZED AZIMUTHAL DISTRIBUTIONS

Following Eqs. (3) and (7), the azimuthal distributions of the normalized yields R_α , defined in Sec. II, can be parametrized as

$$R_\alpha^i = b_\alpha + a_\alpha \cos(\beta_\alpha), \quad (13)$$

where $\alpha = 0, 12$ indicates the reference frame, $i = U, L, C$ the charge combination of the pion pair, and β is the azimuthal angle combination $\phi_1 + \phi_2$ or $2\phi_0$, according to the frame used. The parameter b_α should be consistent with unity, while a_α gives the amplitude of the asymmetries. The normalized azimuthal distributions, presented in Fig. 6 for MC and data samples, are strongly affected by detector acceptances and show apparent modulations. This is clearly visible in the simulated sample, for which a flat distribution is expected since the polarized $D(z)$ are not implemented in

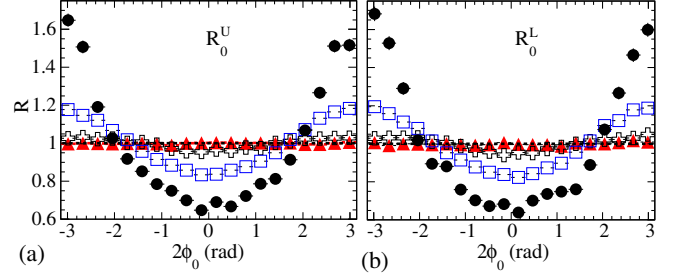


FIG. 7 (color online). Normalized azimuthal distributions for different intervals of $\cos\theta_{\text{th}}$ measured in the RF0 frame for unlike-sign (a) and like-sign (b) pion pairs. The $\cos\theta_{\text{th}}$ intervals are as follows: $0.8 < \cos\theta_{\text{th}} < 0.9$ for circles, $0.5 < \cos\theta_{\text{th}} < 0.7$ for squares, $0.3 < \cos\theta_{\text{th}} < 0.5$ for crosses, $0 < \cos\theta_{\text{th}} < 0.3$ for triangles.

the MC generator. However, the R^L and R^U distributions are almost coincident in the MC sample [Fig. 6(a)], while a clear difference is observed in data [Fig. 6(b)]. This difference is the observable effect of the azimuthal asymmetry produced by the Collins effect.

Detector effects depend on the jet direction. When the $q\bar{q}$ pair is created at low polar angle with respect to the beam axis, there is a higher probability that part of the jet falls outside the detector coverage, and the thrust can be badly reconstructed. The result is a distortion of the distribution, as visible in Fig. 7, which shows R^U and R^L in the RF0 frame for different intervals of $\cos(\theta_{\text{th}})$. The same effect is also visible in the RF12 frame. The triangles in Fig. 7 also show the residual effects of gluon radiation to be small. We can parameterize the acceptance effects on the normalized distribution as an additional contribution to the $\cos(\beta_\alpha)$ modulation, whose amplitude varies with θ : $a_\alpha^\epsilon(\theta)$. Therefore, Eq. (13) becomes

$$\begin{aligned} R_\alpha^i &= (1 + a_\alpha^\epsilon(\theta) \cos(\beta_\alpha)) \cdot (b_\alpha + a_\alpha \cos(\beta_\alpha)) \\ &= b_\alpha + [a_\alpha + a_\alpha^\epsilon(\theta)b_\alpha] \cos(\beta_\alpha) + a_\alpha a_\alpha^\epsilon(\theta) \cos^2(\beta_\alpha), \end{aligned} \quad (14)$$

and shows a coupling between the Collins and detector acceptance effects proportional to $\cos^2(\beta_\alpha)$.

In principle, it would be possible to estimate detector acceptance effects with simulated events, and correct the asymmetries measured in the data sample, but this procedure would introduce large uncertainties. All these considerations suggest the possibility to form a suitable double ratio of azimuthal distributions, in order to reduce the effect of detector acceptance and perform a measurement almost independent from simulation.

VI. DOUBLE RATIOS

Given the difficulties in separating the Collins effect from asymmetries produced by detector acceptances and radiative effects, we exploit the fact that most of the

instrumental effects should largely cancel in ratios of asymmetries, as for example, the ratio of unlike-sign over like-sign asymmetries,

$$\begin{aligned} \frac{R_{12}^U}{R_{12}^L} &\simeq \frac{1 + \left\langle \frac{\sin^2 \theta_{\text{th}}}{1 + \cos^2 \theta_{\text{th}}} \right\rangle G^U \cos(\phi_1 + \phi_2)}{1 + \left\langle \frac{\sin^2 \theta_{\text{th}}}{1 + \cos^2 \theta_{\text{th}}} \right\rangle G^L \cos(\phi_1 + \phi_2)} \\ &\simeq 1 + \left\langle \frac{\sin^2 \theta_{\text{th}}}{1 + \cos^2 \theta_{\text{th}}} \right\rangle \{G^U - G^L\} \cos(\phi_1 + \phi_2). \end{aligned} \quad (15)$$

Here, G^L and G^U are, respectively,

$$\begin{aligned} G^U &\propto \frac{5H_1^{\text{fav}} \overline{H}_1^{\text{fav}} + 7H_1^{\text{dis}} \overline{H}_1^{\text{dis}}}{5D_1^{\text{fav}} \overline{D}_1^{\text{fav}} + 7D_1^{\text{dis}} \overline{D}_1^{\text{dis}}}, \\ G^L &\propto \frac{5H_1^{\text{fav}} \overline{H}_1^{\text{dis}} + 5H_1^{\text{dis}} \overline{H}_1^{\text{fav}} + 2H_1^{\text{dis}} \overline{H}_1^{\text{dis}}}{5D_1^{\text{fav}} \overline{D}_1^{\text{dis}} + 5D_1^{\text{dis}} \overline{D}_1^{\text{fav}} + 2D_1^{\text{dis}} \overline{D}_1^{\text{dis}}}, \end{aligned} \quad (16)$$

where we omitted the z and p_t dependence in order to simplify the notation. The double ratio (DR) is performed after the integration over the polar angle θ_{th} , so that the average values of the quantity $\sin^2 \theta_{\text{th}} / (1 + \cos^2 \theta_{\text{th}})$ appear. These average values do not differ for like-, unlike-, and all charged pion pairs. In Eq. (15) we assume that the detector acceptance effects do not depend on the charge combination of the pion pairs, that is $a^{e,L}(\theta_{\text{th}}) = a^{e,U}(\theta_{\text{th}})$. We also neglect the extra term proportional to $\cos^2(\phi_1 + \phi_2)$, which couple the detector acceptance to the true Collins asymmetries, and stop the series expansion at the first order in $\cos(\phi_1 + \phi_2)$. We have checked for the presence of these and other terms in addition to the $\cos(\phi_1 + \phi_2)$ modulation and found them negligible. Also the assumption of acceptance effects independent on the charge combination of the pion pairs seems to hold, and noting that also the asymmetries produced by gluon radiation do not depend on the charge combination, the asymmetry amplitudes resulting from the double ratio should mainly depend on a different combination of favored and disfavored fragmentation functions (see also discussion in Sec. IX).

Similarly, the DR of the normalized distributions of unlike-sign and charged pion pairs is given by

$$\frac{R_{12}^U}{R_{12}^C} \simeq 1 + \left\langle \frac{\sin^2 \theta_{\text{th}}}{1 + \cos^2 \theta_{\text{th}}} \right\rangle \{G^U - G^C\} \cos(\phi_1 + \phi_2), \quad (17)$$

with

$$G^C \propto \frac{5(H_1^{\text{fav}} + H_1^{\text{dis}})(\overline{H}_1^{\text{fav}} + \overline{H}_1^{\text{dis}}) + 4H_1^{\text{dis}} \overline{H}_1^{\text{dis}}}{5(D_1^{\text{fav}} + D_1^{\text{dis}})(\overline{D}_1^{\text{fav}} + \overline{D}_1^{\text{dis}}) + 4D_1^{\text{dis}} \overline{D}_1^{\text{dis}}}. \quad (18)$$

The measured U/L and U/C double ratios can be used to derive information about the relative sign and magnitude

of favored and disfavored fragmentation functions [31]. Analogous expressions can be obtained in the RF0 reference frame, with modulations in $\cos(2\phi_0)$ instead of $\cos(\phi_1 + \phi_2)$.

The DRs are still parametrized by a cosine function

$$\frac{R_\alpha^i}{R_\alpha^j} = B_\alpha^{ij} + A_\alpha^{ij} \cdot \cos(\beta_\alpha), \quad (19)$$

where B and A are free parameters. The constant term B should be consistent with unity and the parameter A , which depends on z , p_t , and the average value of $\sin^2 \theta / (1 + \cos^2 \theta)$, should mainly contain the Collins effect.

Figure 8 shows the DR of unlike- to like-sign pion pairs for samples of simulated and data events. The distribution for the MC sample is now essentially flat as expected; however, a slight deviation from zero asymmetry, of the order of 0.2%, is measured. The origin and the effect of this bias will be discussed in Sec. IX A. A clear cosine modulation is instead visible in the data sample [Fig. 8(b)], which can be attributed to the Collins effect.

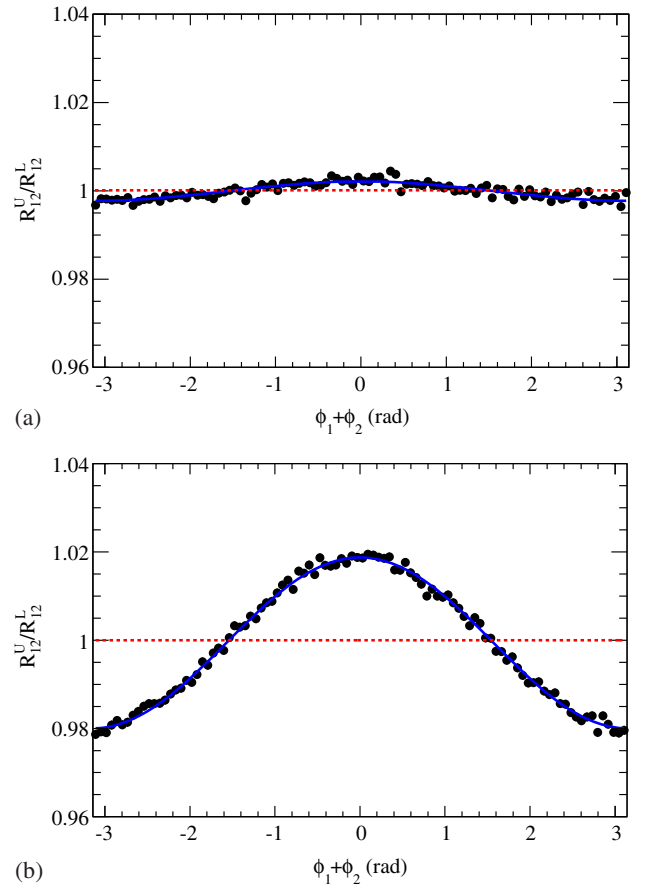


FIG. 8 (color online). Double ratio of azimuthal distributions of unlike- over like- sign pion pairs for Monte Carlo (a) and data (b) samples, in the RF12 system. The solid lines are the result of the fits with the function reported in Eq. (19).

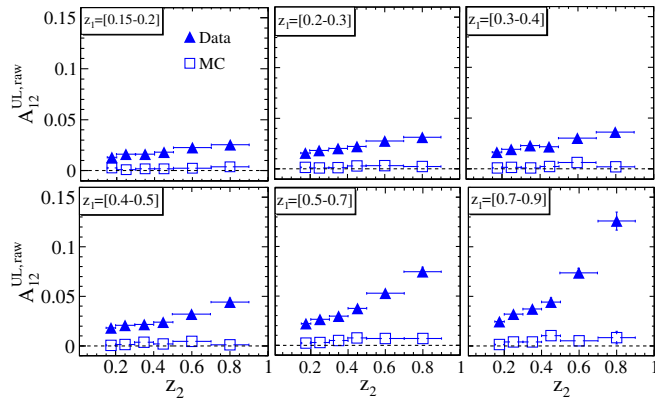


FIG. 9 (color online). Comparison of raw DR asymmetries as a function of 6×6 (z_1, z_2)-bin subdivision calculated in data (triangles) and MC samples (squares). In each plot, z_1 is fixed following the interval subdivisions described in the text, and z_2 ranges between 0.15 to 0.9.

Thanks to the large amount of data, we can study the dependence of the asymmetry as a function of fractional energies (z_1 and z_2) and transverse momenta (p_{t1} and p_{t2} , and p_{t0}) of the selected pions. We choose 6×6 (z_1, z_2) bins, with the following z intervals: [0.15–0.2], [0.2–0.3], [0.3–0.4], [0.4–0.5], [0.5–0.7], [0.7–0.9]; we use 4×4 (p_{t1}, p_{t2}) bins in the RF12 frame, and 9 p_{t0} bins in the RF0 frame. The p_t intervals are defined in Table III.

Figure 9 shows the asymmetries obtained from fits to the UL double ratio (A^{UL}) in the RF12 frame for data and MC samples in every (z_1, z_2) bin. The asymmetries are not corrected for the effects described in the next three sections, and report only the statistical errors. Similar results are obtained for the asymmetries measured in the RF0 frame, and as a function of pion transverse momenta.

VII. CONTRIBUTION OF BACKGROUND EVENTS TO THE ASYMMETRIES

The presence of background processes modifies the measured asymmetry A_α^{meas} . This is obtained by fitting the double ratio of the selected sample, and can be written as

$$A_\alpha^{\text{meas}} = \left(1 - \sum_i F_i\right) \cdot A_\alpha + \sum_i F_i \cdot A_\alpha^i. \quad (20)$$

Here, A_α is the true Collins asymmetry produced by the fragmentation of light quarks, while A_α^i and F_i are, respectively, the asymmetry and the fraction of pion pairs in the selected sample due to the i th background component.

The background processes giving a significant contribution after the selection procedure are $e^+e^- \rightarrow \tau^+\tau^-$, $e^+e^- \rightarrow c\bar{c}$, and $e^+e^- \rightarrow \Upsilon(4S) \rightarrow B\bar{B}$. We refer to them as the τ , charm, and bottom backgrounds, respectively. In

the former process, azimuthal asymmetries can arise from parity violation in the weak decay of the heavy leptons. For charm processes the Collins effect is expected to be suppressed by the heavy mass of the fragmenting quarks. The study of the azimuthal asymmetries for $c\bar{c}$ processes would be interesting on its own, but larger data samples and an optimized analysis would be necessary to perform precise measurements. No asymmetries arising from the Collins effect are expected from $\Upsilon(4S) \rightarrow B\bar{B}$ decays.

The fractions F_i and the asymmetries A_α^i of the background components are determined using both MC and data control samples specific to each process, and evaluated for each bin of z and p_t .

A. The $e^+e^- \rightarrow \tau^+\tau^-$ background

In order to assess whether a significant asymmetry is produced by $e^+e^- \rightarrow \tau^+\tau^-$ processes we study a τ -enhanced data sample, consisting of the events in the lower-right side of the E_{vis} -vs- T distribution of Fig. 5, and rejected by the cut shown in the same picture. The purity of this control sample is estimated to be about 75%; the fitted asymmetries are very small and consistent with zero within about two standard deviations. We also perform the analysis on a sample of simulated $\tau^+\tau^-$ events, applying the same event selection as for the data, and obtain asymmetries consistent with the small bias observed in the uds MC sample.

The contribution of the $e^+e^- \rightarrow \tau^+\tau^-$ background appears in Eq. (20) as the product of the asymmetry A_α^τ multiplied by the pion pairs fraction F_τ . We estimate F_τ from the number of pion pairs selected in a MC sample of $\tau^+\tau^-$ events scaled by the data/MC luminosity ratio, independently for every z and p_t bin. The values of F_τ range from about 1% at low z_i , to more than 18% at high z_i , and are around 2% independently of p_t .

Considering that the asymmetries measured in the τ -enhanced samples are consistent with zero or give only very small deviations from zero, and that the contamination from $\tau^+\tau^-$ events is significant only at large z_i , where the Collins effect from uds is large (see Fig. 9), we set $A_\alpha^\tau = 0$ everywhere.

B. The $e^+e^- \rightarrow c\bar{c}$ and $e^+e^- \rightarrow B\bar{B}$ backgrounds

The fraction of pion pairs due to $e^+e^- \rightarrow c\bar{c}$ events is much larger than the $\tau^+\tau^-$ component, because of the higher production cross section and of event shapes similar to those for light quark production. The fraction F_c , estimated with a generic $c\bar{c}$ -MC sample, amounts to about 25% for the whole data sample, roughly independent of p_t , but ranging from about 30% for pairs with low fractional energies down to less than one percent at the highest z_i values.

The $B\bar{B}$ events are strongly suppressed by the event selection, mainly because of the cut on the event thrust, and the fractions F_B are estimated to be at most 2% for low

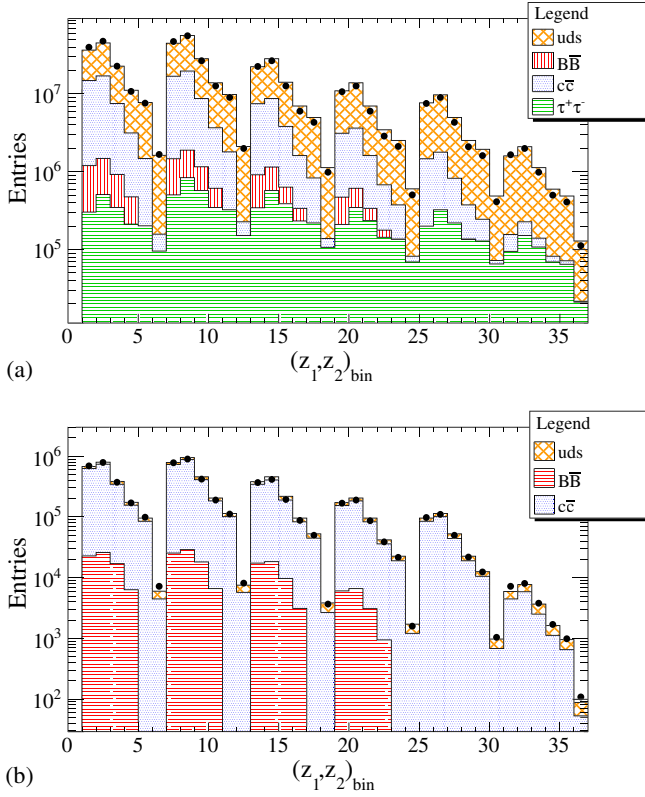


FIG. 10 (color online). Comparison between the number of pion pairs in the data (a) and D^* -enhanced data (b) samples (points) and the sum of the contribution due to $\tau^+\tau^-$, $B\bar{B}$, $c\bar{c}$, and uds components estimated with MC simulation as a function of (z_1, z_2) bins.

fractional energies, with no tracks with $z > 0.5$. As a consequence even a sizable asymmetry in the $B\bar{B}$ sample would have negligible effect on the measured asymmetry, and we set $A_\alpha^B = 0$.

On the contrary, given the large fractions, the azimuthal asymmetries of the selected charm sample, even if small, can have a significant impact on the total asymmetries, and therefore have to be independently measured. For this purpose, we select a charm-enhanced data sample requiring at least one $D^{*\pm}$ candidate from the decay $D^{*\pm} \rightarrow D^0\pi^\pm$, with the D^0 candidate reconstructed in the following Cabibbo-favored decay channels: $K^-\pi^+$, $K^-\pi^+\pi^-\pi^+$, $K_S^0\pi^+\pi^-$, and $K^-\pi^+\pi^0$. Note that a control sample built in this way will contain also a fraction of $B\bar{B}$ events.

The reconstructed D^0 mass is required to be within 30 MeV of the world average value [42]. A low momentum pion is then combined with the D^0 candidate in order to obtain the D^* candidate. We retain events with at least one D^* candidate for which $0.1425 < \Delta M < 0.1485$ GeV, where ΔM is the mass difference between the reconstructed D^* and D^0 candidates.

As for the full data sample, we measure the azimuthal asymmetry $A_\alpha^{D^*}$ by fitting the double ratio of pion pair distributions in the D^* -enhanced control sample. The

estimated fractions f_c of pion pairs in this sample that are from $c\bar{c}$ events average about 90%, with values for the individual (z_1, z_2) -bins ranging from more than 90% to about 60% with decreasing fractional energies, and almost constant with p_T . Fractions f_B from $B\bar{B}$ events amount to a few percent at low energies, and vanish for $z_i > 0.5$.

C. Corrections to the measured asymmetries

Using the asymmetries A_α^{meas} and $A_\alpha^{D^*}$ fitted respectively in the full and D^* -enhanced data samples, together with the fractions F_i and f_i , and assuming $A_\alpha^c = A_\alpha^B = 0$ and that the charm asymmetry is the same in both samples, we can write

$$\begin{aligned} A_\alpha^{\text{meas}} &= (1 - F_c - F_B - F_\tau) \cdot A_\alpha + F_c \cdot A_\alpha^c, \\ A_\alpha^{D^*} &= (1 - f_c - f_B) \cdot A_\alpha + f_c \cdot A_\alpha^c. \end{aligned} \quad (21)$$

The unknown background-corrected Collins asymmetries A_α and the charm contribution A_α^c are obtained solving these equations in each bin of z and p_T .

A significant source of systematic error in this procedure can arise from the fractions F_i and f_i , which are estimated with MC simulation. The π^\pm cross sections in $e^+e^- \rightarrow q\bar{q}$ processes are known at no better than the few percent level; furthermore, only a fraction of all charmed-hadrons and B -meson decays have been measured and included in the EVTGEN generator. Also τ decays with many hadrons in the final state are known with significant uncertainties only. In order to evaluate the effect of these uncertainties on the measured fractions, we compare bin-by-bin the number of pion pairs selected in the data with those selected in the uds , τ , charm, and bottom MC samples, summed according to the nominal production cross sections. The observed data-MC differences are at most at the few percent level as can be deduced by Fig. 10. Conservatively, we assign these differences as additional uncertainties on the charm (F_c , and f_c) and tau (F_τ) fractions, which are the most significant contributions in the extraction of A_α and A_α^c from Eq. (21). This choice has a very little effect on the final result, given that the uncertainties on the background subtraction procedure are dominated by the statistical errors of the fit to the D^* control sample, in particular for bins of high fractional energies.

We check the consistency of the D^* -enhanced sample by performing the correction of the measured asymmetries, and the estimation of the charm contributions independently for the four D^0 decay modes, finding no significant differences.

VIII. ASYMMETRY DILUTION DUE TO DETECTOR EFFECTS

The experimental method uses the thrust axis to estimate the $q\bar{q}$ axis. The distribution of the opening angle between the two axes for simulated events, shown in Fig. 11, peaks

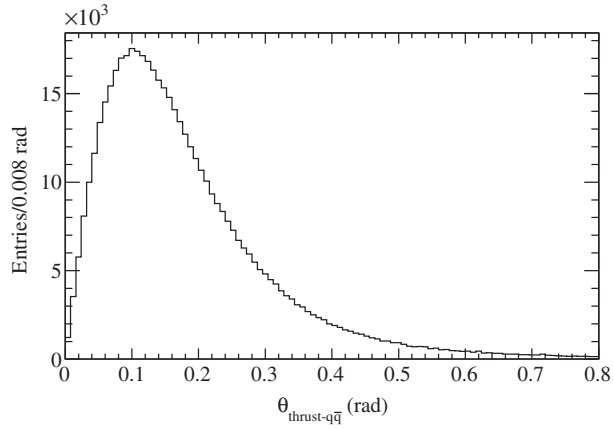
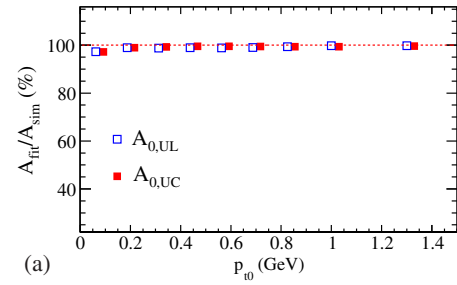


FIG. 11. Opening angle in radians between the thrust axis calculated from reconstructed particles in simulated events and the generated $q\bar{q}$ axis.

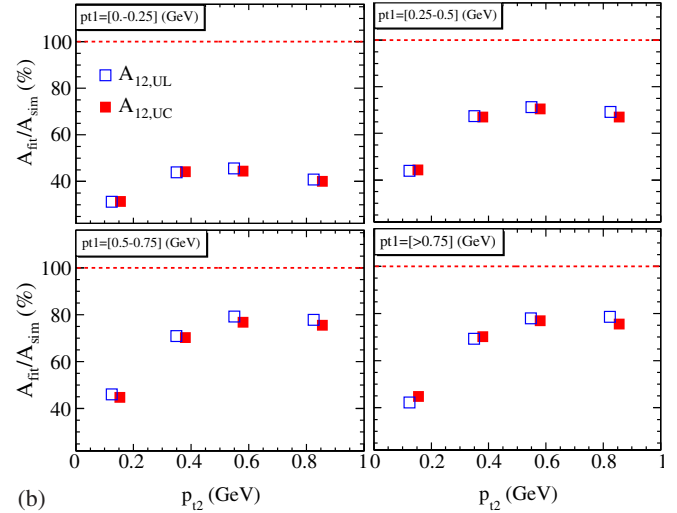
at about 100 mrad, and has a long tail at higher values. This produces a dilution of the asymmetries, in particular in the thrust reference frame, where the azimuthal angles ϕ_1 and ϕ_2 are calculated with respect to the thrust axis (see Fig. 2). The impact on the measurement of the azimuthal angle ϕ_0 in RF0 is small. Particle identification and tracking resolution have small effects in both frames.

An additional smearing of the azimuthal angles can occur when the track is very close to the analysis axis, where a small mismeasurement of the track results in a large shift in the azimuthal angle. A larger effect is expected in RF12 where, by construction, energetic tracks are close to the thrust axis.

These and other detector effects can be studied via MC simulation, comparing the fitted asymmetries with those introduced in the simulation. The MC generator does not include the Collins effect, so we remodulate the generated azimuthal distributions applying to every selected pion pair a weight defined as $w^i = 1 + a^i \cdot \cos(\beta_{\alpha,\text{gen}})$, with $i = U, L, C$ and $\alpha = 12$ or 0 . In RF12 the angle $\beta_{12,\text{gen}}$ is the sum of the azimuthal angles $\phi_{1,\text{gen}}$ and $\phi_{2,\text{gen}}$ for generated particles calculated with respect to the true quark-antiquark axis, while in RF0 the angle $\beta_{0,\text{gen}} = 2\phi_{0,\text{gen}}$ is calculated with respect to the three-momentum of one of the generated pions which makes the pair. The ratio of the fitted to the simulated asymmetry should be unity for perfect reconstruction, i.e. if all $\beta_\alpha = \beta_{\alpha,\text{gen}}$, where β_α are the proper combinations of azimuthal angles in the reconstructed MC sample. We verify that for $a_i = 0$ the fitted asymmetry is consistent with the biases observed in Sec. VI. We consider several a_i values between zero to 0.1, independent of z , p_t and $\theta_{\text{th}(2)}$. Subtracting the bias and taking the ratio for each, we obtain dilution values that vary by less than their statistical error in each z , p_t , and $\sin^2 \theta_{\text{th}(2)}/(1 + \cos^2 \theta_{\text{th}(2)})$ bin. We therefore average these values in each bin and use them to correct the background-corrected data.



(a)



(b)

FIG. 12 (color online). Ratio (in percent) of the fitted to the simulated asymmetries as described in the text, as a function of p_t bin. Open and full squares refer to the UL and UC double ratios, respectively. In the RF0 frame (a) the fitted asymmetry is consistent with the simulated one, while in the RF12 frame (b) it is systematically underestimated.

As shown in Fig. 12(a), the results for RF0 are essentially consistent with the simulated asymmetries for every bin. On the contrary, the fitted asymmetries for RF12 [Fig. 12(b)] systematically underestimate the generated values, with correction factors ranging from about 1.3 to 2.3 with increasing values of z , and from about 3 to 1.3 with increasing values of p_t . The errors on weighted averages of the correction factors are assigned as systematic errors.

Collins asymmetries are expected to depend on the polar angle of the analysis axis, as well as on the two pions' z and p_t , and any strongly dependence might affect the dilution factors. We have evaluated these factors using weights in which a^i has the expected linear dependence on the quantity $\sin^2 \theta_{\text{th}(2)}/(1 + \cos^2 \theta_{\text{th}(2)})$, and weights that contain a linear combination of z , such as $a^i(z_1, z_2) = a^i \cdot z_1 \cdot z_2$. The measured dilutions are in good agreement each other and the shifts in the values are within the uncertainties. Since from the results of the tests performed there are no indications of the dependence of the dilution on the true asymmetry, we report the results using uniform weighting.

IX. STUDY OF SYSTEMATIC EFFECTS

We have identified a number of systematic effects that can potentially influence the measurement of the asymmetries. The sizable effects are corrected as described above; here we discuss the origins and uncertainties of these and other effects. Unless otherwise stated, all the systematic uncertainties are evaluated in each bin.

A. Test of the DR method on Monte Carlo sample

The MC generator describes the radiative gluon effects, but does not contain asymmetries based on the Collins effect. Nevertheless, as discussed in Sec. VI and visible in Fig. 9, the fitted asymmetries for the uds -MC samples show deviations from zero at all values of the pion transverse momenta and fractional energies. The fitted asymmetries are small with respect to the data everywhere, but not negligible in several cases, being of the same order as other systematic uncertainties. In order to understand the origin of this bias we compare three different MC samples: the first sample is built at generator level, that is taking the momenta of pions as produced by the event generator; the second sample also uses generator level momenta, but only pions with associated reconstructed and identified tracks; the last sample is the standard fully reconstructed MC sample. We also compare the results using as reference axis the true $q\bar{q}$ axis, instead of the thrust axis, and varying the criteria that define the track detector acceptance, as track polar angle and number of hits per track in the DCH. As a result of these investigations we conclude that the small bias observed in RF0 is due to a nonperfect cancellation of the detector effects in the double ratio procedure, while in RF12 the main effects come from the use of the thrust axis as a reference axis. We subtract the estimated bias from the asymmetry, and take as systematic uncertainty the combination in quadrature of the largest variation of the performed tests with the statistical error of the bias measured with the standard fit.

B. Uncertainties due to the p_t resolution

The Collins effect also depends on the pion momentum transverse to the direction of the fragmenting quark (P^\perp , as in Fig. 1). In the RF12 frame, this quantity is not accessible because the momenta of the fragmenting quarks is not known, and the asymmetries are measured as a function of the momenta of the pions transverse to the thrust axis (p_{t1} and p_{t2}). In order to convert the measured asymmetries to the asymmetries with respect to the true P^\perp momenta, one must account not only for the dilution effect discussed in the previous section, but also for the migration of pion pairs from one momentum-bin to another. The P^\perp resolution function is obtained for different p_t ranges making use of the uds MC sample. We fit the distribution of the difference between the true P^\perp and the reconstructed p_t transverse momentum with a double Gauss function, or a

crystal-ball function for $p_t < 0.25\text{GeV}$; the width of the dominant Gaussian component results of the order of 100 MeV. These resolution functions are then used to redistribute the pion pairs in the various (p_{t1}, p_{t2}) bins according to the probability that they were generated in that particular bin, and the fit to the azimuthal distributions of the new bin contents is performed. The relative difference between the asymmetries obtained with this and the standard procedure are of the order of 10% for every bin, with the exception of the lower (p_{t1}, p_{t2}) bin, where it amounts to about 30%; these differences are assigned as systematic uncertainties.

C. Uncertainties due to particle identification

With the algorithm used, the probability of misidentifying kaons and protons as pions has been measured to be a few percent per track. This results in a purity for the selected pion pair sample of about 96%, with the remaining 4% of pairs made of a true pion and a true kaon. We repeat the study with both more stringent and more loose selection criteria, and compare the results with the standard selection. Good agreement is found among the different selections; the absolute values of the differences amount to at most a few percent of the measured asymmetries and are assigned as systematic errors.

D. Uncertainties due to the fit procedure

The dependence of the measured asymmetries on the binning is checked by comparing the results with three different bin sizes of the azimuthal angles $\beta_{12} = \phi_1 + \phi_2$ and $\beta_0 = 2\phi_0$: 18° , 4.5° , and 1.8° (used for the standard analysis). The largest deviations are less than 1% and are taken as systematic errors. The DR distributions are fitted by Eq. (19), which approximates the series expansion to the first order in $\cos(\beta_\alpha)$, with β the azimuthal angles in the respective reference frame and $\alpha = 12, 0$, and neglects a possible $\cos^2(\beta_\alpha)$ contribution due to the detector acceptance. In order to check for the sensitivity to these contributions, we use different fitting functions with additional higher harmonic terms. No significant changes in the values of the cosine moments with respect to the standard fits are observed. A certain level of correlation among the entries of the double ratio distributions is expected because the same pion can be used to form several pion pairs, so that the statistical error returned by the fits could be underestimated. We check for this effect, performing a set of 3000 pseudoexperiments. For each pseudoexperiment we randomly generate according to the fit model a statistical sample of the same size of that selected by the analysis procedure. Gaussian fits to the pull distributions of the values of the fitted asymmetries give results consistent with a vanishing mean and a unit width, as expected for an unbiased fit model.

E. Test of the double ratio with same sign pion pairs

The Collins effect does not depend on the electric charge, but only on the combination of favored and disfavored fragmentation functions in the particular charge combination of the paired pions. In particular, the same combination appears when a $\pi^+\pi^+$ or a $\pi^-\pi^-$ pair is considered. Gluonic radiative effects do not depend on the electric charge either. Therefore, we can test the double ratio procedure and the possible charge dependence of the detector response by probing the ratio of normalized azimuthal distributions for positively charged over negatively charged pion pairs. Results consistent with unity are obtained.

F. Subtraction method and double ratio

As a cross-check of the double ratio method we also extract the asymmetry by using a different procedure which consists of taking the difference, instead of the ratio, of pion pair rates. In this case, gluon radiation effects cancel at all orders, while the cancellation of the acceptance effects could be nonoptimal. The asymmetries measured with the two methods are consistent, making us confident that possible radiative and detector effects not canceling in the double ratio procedure do not significantly affect the results.

G. Study of beam polarization effects

Charged particles circulating in a magnetic field become polarized transverse to the beam direction due to the emission of spin-flipping synchrotron radiation, known as the Sokolov-Ternov effect [43]. Beam polarization can affect the angular distribution of produced hadrons in $e^+e^- \rightarrow hX$ introducing an azimuthal asymmetry with respect to the beam spin direction. This asymmetry has in common with the Collins asymmetry that both are transverse single spin asymmetries: the former concerning lepton spins, the latter quark spins. The beam polarization is expected to be negligible at the PEP-II interaction point. This can be verified by studying the reaction $e^+e^- \rightarrow \mu^+\mu^-$, whose cross section can be written as [44]

$$\frac{d\sigma(e^+e^- \rightarrow \mu^+\mu^-)}{d\Omega} \propto 1 + \cos^2\theta + P^2\sin^2\theta \cos(2\phi) \quad (22)$$

where P is the degree of transverse polarization of the beams, and θ and ϕ are the polar and azimuthal angles of the produced muons in the e^+e^- center of mass system.

We analyze the $\cos\theta$ and ϕ distributions of selected muon pairs, emitted at a polar angle $|\cos\theta| < 0.75$, in order to ensure that they fall within the SVT coverage. We perform the fit to the whole sample and separately to the samples corresponding to the different data taking periods. In all cases the fits are consistent with expectations for unpolarized beams. We conclude that no significant

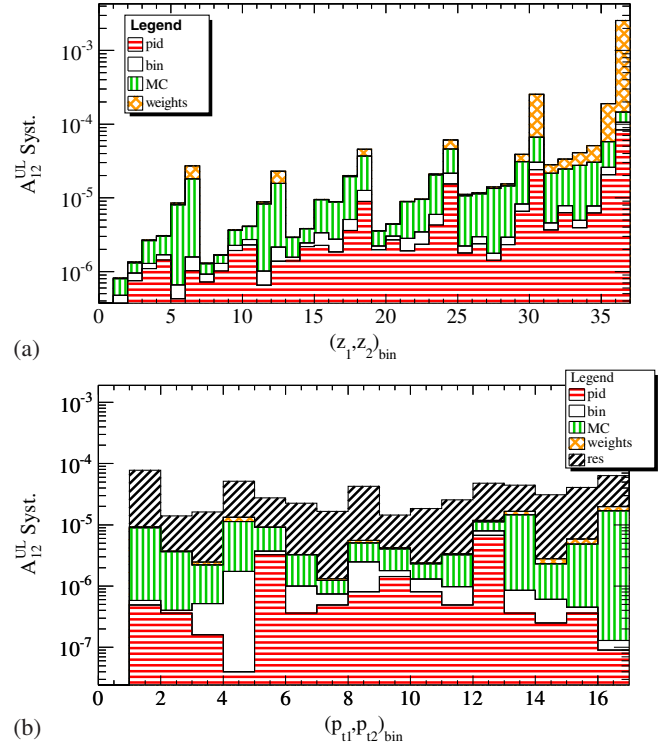


FIG. 13 (color online). Squared contributions to the systematic error on the asymmetry (for the UL double ratio in the RF12 frame) as a function of (z_1, z_2) bins (a) and (p_{t1}, p_{t2}) bins (b). The reported uncertainties are due to particle identification (pid), the binning in the azimuthal angle (bin), the bias observed in MC (MC), the correction for the asymmetry dilution (weights), and the p_t resolution with respect to the $q\bar{q}$ axis (res).

systematic errors need to be assigned for possible buildup of beam polarization.

H. Consistency of asymmetries in different data sets

The results reported in this paper are obtained combining the data taken at two different c.m. energies, at the peak of the $\Upsilon(4S)$ resonance and 40 MeV below. While the slightly different energy is not a problem, the two sets of data differ for the background due to $\Upsilon(4S) \rightarrow B\bar{B}$. We perform a consistency check of the results obtained fitting separately the two data sets (a and b) as follows:

$$\chi^2 = \sum_i \frac{(A_i^a - A_i^b)^2}{(\delta A_i^a)^2 + (\delta A_i^b)^2}, \quad (23)$$

with \sum_i the summation over z or p_t bins, and δA the statistical error on the measured asymmetry A . We find the overall χ^2 per degree of freedom ranging between 1.2 and 0.7. Analogous checks performed on subsamples of data collected in different data-taking periods show a general consistency of the results.

TABLE I. Azimuthal asymmetries, in percent, obtained by fitting the UL double ratio in bins (z_1, z_2) . The errors are statistical and systematic. The table also reports the average values of $z_{1,2}$, $p_{t1,t2,t0}$, and $s_i^2/(1+c_i^2)$, with $s = \sin \theta$, $c = \cos \theta$, $i = th, 2$.

z_1	$\langle z_1 \rangle$	$\langle p_{t1} \rangle$ (GeV)	z_2	$\langle z_2 \rangle$	$\langle p_{t2} \rangle$ (GeV)	$\langle p_{t0} \rangle$ (GeV)	$\langle \frac{s_{th}}{1+c_{th}} \rangle$	$\langle \frac{s_2}{1+c_2} \rangle$	A_{12}^{UL} (%)	A_0^{UL} (%)
[0.15,0.2]	0.174	0.308	[0.15,0.2]	0.174	0.307	0.372	0.716	0.687	$2.16 \pm 0.20 \pm 0.09$	$1.11 \pm 0.14 \pm 0.05$
[0.15,0.2]	0.174	0.310	[0.2,0.3]	0.244	0.369	0.364	0.715	0.683	$3.07 \pm 0.18 \pm 0.12$	$1.43 \pm 0.12 \pm 0.05$
[0.15,0.2]	0.174	0.313	[0.3,0.4]	0.344	0.431	0.356	0.711	0.676	$2.99 \pm 0.27 \pm 0.16$	$1.34 \pm 0.16 \pm 0.06$
[0.15,0.2]	0.174	0.315	[0.4,0.5]	0.444	0.475	0.351	0.706	0.671	$3.42 \pm 0.28 \pm 0.17$	$1.44 \pm 0.17 \pm 0.06$
[0.15,0.2]	0.174	0.318	[0.5,0.7]	0.577	0.506	0.346	0.697	0.663	$4.77 \pm 0.39 \pm 0.29$	$1.76 \pm 0.20 \pm 0.07$
[0.15,0.2]	0.174	0.322	[0.7,0.9]	0.772	0.439	0.339	0.683	0.655	$7.02 \pm 0.71 \pm 0.50$	$2.48 \pm 0.26 \pm 0.08$
[0.2,0.3]	0.244	0.369	[0.15,0.2]	0.174	0.309	0.511	0.715	0.685	$2.99 \pm 0.18 \pm 0.11$	$1.24 \pm 0.12 \pm 0.05$
[0.2,0.3]	0.244	0.372	[0.2,0.3]	0.244	0.372	0.490	0.713	0.682	$3.55 \pm 0.18 \pm 0.13$	$1.53 \pm 0.11 \pm 0.06$
[0.2,0.3]	0.244	0.376	[0.3,0.4]	0.344	0.435	0.467	0.710	0.676	$3.99 \pm 0.27 \pm 0.19$	$1.83 \pm 0.17 \pm 0.06$
[0.2,0.3]	0.244	0.378	[0.4,0.5]	0.444	0.479	0.453	0.706	0.672	$4.38 \pm 0.27 \pm 0.20$	$1.76 \pm 0.17 \pm 0.06$
[0.2,0.3]	0.244	0.380	[0.5,0.7]	0.577	0.511	0.438	0.698	0.665	$5.93 \pm 0.36 \pm 0.30$	$2.32 \pm 0.19 \pm 0.08$
[0.2,0.3]	0.244	0.379	[0.7,0.9]	0.772	0.442	0.412	0.685	0.658	$8.98 \pm 0.65 \pm 0.49$	$3.07 \pm 0.24 \pm 0.08$
[0.3,0.4]	0.344	0.430	[0.15,0.2]	0.174	0.311	0.707	0.710	0.682	$2.69 \pm 0.27 \pm 0.17$	$1.27 \pm 0.16 \pm 0.06$
[0.3,0.4]	0.344	0.434	[0.2,0.3]	0.244	0.375	0.661	0.710	0.680	$3.34 \pm 0.25 \pm 0.20$	$1.41 \pm 0.16 \pm 0.06$
[0.3,0.4]	0.344	0.438	[0.3,0.4]	0.344	0.438	0.613	0.706	0.674	$4.80 \pm 0.42 \pm 0.31$	$2.26 \pm 0.31 \pm 0.12$
[0.3,0.4]	0.344	0.440	[0.4,0.5]	0.444	0.482	0.580	0.702	0.671	$4.33 \pm 0.41 \pm 0.30$	$1.95 \pm 0.29 \pm 0.11$
[0.3,0.4]	0.344	0.439	[0.5,0.7]	0.577	0.515	0.548	0.696	0.665	$5.71 \pm 0.53 \pm 0.45$	$2.74 \pm 0.32 \pm 0.18$
[0.3,0.4]	0.344	0.433	[0.7,0.9]	0.772	0.442	0.493	0.684	0.659	$9.62 \pm 0.93 \pm 0.71$	$4.31 \pm 0.35 \pm 0.22$
[0.4,0.5]	0.444	0.475	[0.15,0.2]	0.174	0.313	0.901	0.706	0.680	$3.21 \pm 0.27 \pm 0.19$	$1.03 \pm 0.17 \pm 0.06$
[0.4,0.5]	0.444	0.479	[0.2,0.3]	0.244	0.377	0.828	0.706	0.678	$3.70 \pm 0.25 \pm 0.21$	$1.69 \pm 0.17 \pm 0.06$
[0.4,0.5]	0.444	0.483	[0.3,0.4]	0.344	0.439	0.752	0.702	0.673	$4.40 \pm 0.41 \pm 0.30$	$2.04 \pm 0.29 \pm 0.11$
[0.4,0.5]	0.444	0.484	[0.4,0.5]	0.444	0.483	0.699	0.699	0.669	$4.87 \pm 0.47 \pm 0.31$	$1.96 \pm 0.31 \pm 0.11$
[0.4,0.5]	0.444	0.481	[0.5,0.7]	0.578	0.516	0.647	0.693	0.664	$6.20 \pm 0.57 \pm 0.46$	$3.36 \pm 0.34 \pm 0.20$
[0.4,0.5]	0.445	0.471	[0.7,0.9]	0.774	0.441	0.564	0.681	0.659	$12.62 \pm 1.36 \pm 0.82$	$4.84 \pm 0.51 \pm 0.24$
[0.5,0.7]	0.577	0.506	[0.15,0.2]	0.174	0.315	1.155	0.697	0.677	$4.81 \pm 0.39 \pm 0.33$	$1.62 \pm 0.20 \pm 0.10$
[0.5,0.7]	0.577	0.510	[0.2,0.3]	0.244	0.379	1.042	0.698	0.675	$5.55 \pm 0.36 \pm 0.34$	$2.07 \pm 0.19 \pm 0.10$
[0.5,0.7]	0.577	0.514	[0.3,0.4]	0.344	0.438	0.921	0.696	0.671	$6.09 \pm 0.55 \pm 0.37$	$2.85 \pm 0.32 \pm 0.19$
[0.5,0.7]	0.578	0.514	[0.4,0.5]	0.444	0.481	0.840	0.693	0.667	$7.82 \pm 0.60 \pm 0.39$	$3.17 \pm 0.34 \pm 0.19$
[0.5,0.7]	0.579	0.515	[0.5,0.7]	0.579	0.515	0.769	0.688	0.662	$10.97 \pm 0.73 \pm 0.62$	$4.57 \pm 0.37 \pm 0.25$
[0.5,0.7]	0.580	0.508	[0.7,0.9]	0.775	0.440	0.653	0.675	0.656	$19.80 \pm 1.50 \pm 1.57$	$7.66 \pm 0.62 \pm 0.31$
[0.7,0.9]	0.772	0.437	[0.15,0.2]	0.174	0.319	1.515	0.683	0.672	$7.28 \pm 0.75 \pm 0.55$	$2.37 \pm 0.26 \pm 0.11$
[0.7,0.9]	0.772	0.442	[0.2,0.3]	0.244	0.379	1.314	0.685	0.672	$8.67 \pm 0.62 \pm 0.56$	$2.99 \pm 0.24 \pm 0.11$
[0.7,0.9]	0.773	0.443	[0.3,0.4]	0.344	0.433	1.111	0.684	0.668	$9.52 \pm 0.88 \pm 0.61$	$4.00 \pm 0.35 \pm 0.20$
[0.7,0.9]	0.774	0.442	[0.4,0.5]	0.445	0.469	0.978	0.682	0.665	$11.92 \pm 1.29 \pm 0.69$	$5.91 \pm 0.52 \pm 0.24$
[0.7,0.9]	0.775	0.440	[0.5,0.7]	0.580	0.506	0.869	0.676	0.659	$20.73 \pm 1.59 \pm 1.41$	$7.26 \pm 0.61 \pm 0.30$
[0.7,0.9]	0.776	0.458	[0.7,0.9]	0.776	0.461	0.735	0.664	0.651	$39.31 \pm 3.26 \pm 5.06$	$11.10 \pm 1.19 \pm 0.39$

I. Summary of systematic uncertainties

All systematic effects are evaluated for each bin of fractional energy and pion transverse momentum. As an example, the sizable contributions to the absolute systematic errors for A_{12}^{UL} are shown as a function of the 36 (z_1, z_2) bins in Fig. 13(a), and as a function of the 16 (p_{t1}, p_{t2}) bins in Fig. 13(b). The histograms report the squared errors assigned for uncertainties due to particle identification, bin size of the azimuthal distributions, estimate of the bias observed in the MC sample, and estimate of the correction factors for the dilution of the asymmetry. The two latter sources dominate at high fractional energies, while at low- z values all contributions are comparable. In Fig. 13(b) is also reported the squared uncertainty due to the p_t resolution (res). This, and the uncertainty in the estimate of the bias, are the dominant sources at all values of transverse

momenta in the RF12 frame. The total systematic error is obtained by adding in quadrature the individual contributions.

The contribution of the various background sources ($c\bar{c}$, $b\bar{b}$, and $\tau^+\tau^-$ events) to the measured asymmetries is subtracted with the procedure described in Sec. VII. Through Eq. (21), the statistical error of the Collins asymmetries account for the statistical uncertainties of the asymmetries measured in the full and in the D^* -enhanced data sample, and for the statistical and systematic uncertainties in the determination of the relative fractions F_i and f_i .

X. RESULTS

This section summarizes the measured asymmetries as a function of fractional energies z , transverse momenta p_t ,

TABLE II. Azimuthal asymmetries, in percent, obtained by fitting the UC double ratio in bins (z_1, z_2) . The errors are statistical and systematic. The table also reports the average values of $z_{1,2}$, $p_{11,12,10}$, and $s_i^2/(1+c_i^2)$, with $s = \sin \theta$, $c = \cos \theta$, $i = \text{th}, 2$.

z_1	$\langle z_1 \rangle$	$\langle p_{11} \rangle$ (GeV)	z_2	$\langle z_2 \rangle$	$\langle p_{12} \rangle$ (GeV)	$\langle p_{10} \rangle$ (GeV)	$\langle \frac{s_{1h}}{1+c_{1h}} \rangle$	$\langle \frac{s_2}{1+c_2} \rangle$	A_{12}^{UC} (%)	A_0^{UC} (%)
[0.15,0.2]	0.174	0.308	[0.15,0.2]	0.174	0.307	0.372	0.716	0.687	$1.01 \pm 0.16 \pm 0.05$	$0.52 \pm 0.11 \pm 0.03$
[0.15,0.2]	0.174	0.310	[0.2,0.3]	0.244	0.369	0.364	0.715	0.683	$1.41 \pm 0.15 \pm 0.06$	$0.66 \pm 0.10 \pm 0.03$
[0.15,0.2]	0.174	0.313	[0.3,0.4]	0.344	0.431	0.356	0.711	0.676	$1.37 \pm 0.22 \pm 0.09$	$0.61 \pm 0.14 \pm 0.04$
[0.15,0.2]	0.174	0.315	[0.4,0.5]	0.444	0.475	0.351	0.706	0.671	$1.54 \pm 0.23 \pm 0.09$	$0.65 \pm 0.14 \pm 0.04$
[0.15,0.2]	0.174	0.318	[0.5,0.7]	0.577	0.506	0.346	0.697	0.663	$2.19 \pm 0.33 \pm 0.16$	$0.78 \pm 0.17 \pm 0.06$
[0.15,0.2]	0.174	0.322	[0.7,0.9]	0.772	0.439	0.339	0.683	0.655	$3.16 \pm 0.61 \pm 0.26$	$1.05 \pm 0.21 \pm 0.06$
[0.2,0.3]	0.244	0.369	[0.15,0.2]	0.174	0.309	0.511	0.715	0.685	$1.38 \pm 0.15 \pm 0.06$	$0.57 \pm 0.10 \pm 0.03$
[0.2,0.3]	0.244	0.372	[0.2,0.3]	0.244	0.372	0.490	0.713	0.682	$1.67 \pm 0.14 \pm 0.07$	$0.70 \pm 0.09 \pm 0.03$
[0.2,0.3]	0.244	0.376	[0.3,0.4]	0.344	0.435	0.467	0.710	0.676	$1.81 \pm 0.21 \pm 0.10$	$0.82 \pm 0.13 \pm 0.04$
[0.2,0.3]	0.244	0.378	[0.4,0.5]	0.444	0.479	0.453	0.706	0.672	$1.94 \pm 0.21 \pm 0.10$	$0.77 \pm 0.13 \pm 0.04$
[0.2,0.3]	0.244	0.380	[0.5,0.7]	0.577	0.511	0.438	0.698	0.665	$2.65 \pm 0.30 \pm 0.16$	$1.00 \pm 0.15 \pm 0.06$
[0.2,0.3]	0.244	0.379	[0.7,0.9]	0.772	0.442	0.412	0.685	0.658	$3.86 \pm 0.55 \pm 0.26$	$1.25 \pm 0.19 \pm 0.06$
[0.3,0.4]	0.344	0.430	[0.15,0.2]	0.174	0.311	0.707	0.710	0.682	$1.24 \pm 0.22 \pm 0.08$	$0.58 \pm 0.14 \pm 0.04$
[0.3,0.4]	0.344	0.434	[0.2,0.3]	0.244	0.375	0.661	0.710	0.680	$1.51 \pm 0.20 \pm 0.09$	$0.63 \pm 0.13 \pm 0.04$
[0.3,0.4]	0.344	0.438	[0.3,0.4]	0.344	0.438	0.613	0.706	0.674	$2.11 \pm 0.31 \pm 0.15$	$0.95 \pm 0.19 \pm 0.07$
[0.3,0.4]	0.344	0.440	[0.4,0.5]	0.444	0.482	0.580	0.702	0.671	$1.84 \pm 0.31 \pm 0.15$	$0.80 \pm 0.19 \pm 0.07$
[0.3,0.4]	0.344	0.439	[0.5,0.7]	0.577	0.515	0.548	0.696	0.665	$2.50 \pm 0.43 \pm 0.24$	$1.11 \pm 0.22 \pm 0.11$
[0.3,0.4]	0.344	0.433	[0.7,0.9]	0.772	0.442	0.493	0.684	0.659	$3.84 \pm 0.76 \pm 0.35$	$1.66 \pm 0.28 \pm 0.12$
[0.4,0.5]	0.444	0.475	[0.15,0.2]	0.174	0.313	0.901	0.706	0.680	$1.44 \pm 0.23 \pm 0.09$	$0.47 \pm 0.14 \pm 0.04$
[0.4,0.5]	0.444	0.479	[0.2,0.3]	0.244	0.377	0.828	0.706	0.678	$1.63 \pm 0.21 \pm 0.09$	$0.74 \pm 0.13 \pm 0.04$
[0.4,0.5]	0.444	0.483	[0.3,0.4]	0.344	0.439	0.752	0.702	0.673	$1.87 \pm 0.31 \pm 0.15$	$0.84 \pm 0.19 \pm 0.07$
[0.4,0.5]	0.444	0.484	[0.4,0.5]	0.444	0.483	0.699	0.699	0.669	$1.99 \pm 0.36 \pm 0.15$	$0.78 \pm 0.22 \pm 0.07$
[0.4,0.5]	0.444	0.481	[0.5,0.7]	0.578	0.516	0.647	0.693	0.664	$2.59 \pm 0.47 \pm 0.24$	$1.32 \pm 0.24 \pm 0.11$
[0.4,0.5]	0.445	0.471	[0.7,0.9]	0.774	0.441	0.564	0.681	0.659	$4.80 \pm 1.07 \pm 0.37$	$1.77 \pm 0.39 \pm 0.12$
[0.5,0.7]	0.577	0.506	[0.15,0.2]	0.174	0.315	1.155	0.697	0.677	$2.22 \pm 0.33 \pm 0.17$	$0.72 \pm 0.17 \pm 0.06$
[0.5,0.7]	0.577	0.510	[0.2,0.3]	0.244	0.379	1.042	0.698	0.675	$2.49 \pm 0.30 \pm 0.17$	$0.90 \pm 0.15 \pm 0.06$
[0.5,0.7]	0.577	0.514	[0.3,0.4]	0.344	0.438	0.921	0.696	0.671	$2.64 \pm 0.43 \pm 0.23$	$1.13 \pm 0.22 \pm 0.10$
[0.5,0.7]	0.578	0.514	[0.4,0.5]	0.444	0.481	0.840	0.693	0.667	$3.25 \pm 0.48 \pm 0.23$	$1.23 \pm 0.24 \pm 0.11$
[0.5,0.7]	0.579	0.515	[0.5,0.7]	0.579	0.515	0.769	0.688	0.662	$4.56 \pm 0.60 \pm 0.37$	$1.74 \pm 0.28 \pm 0.16$
[0.5,0.7]	0.580	0.508	[0.7,0.9]	0.775	0.440	0.653	0.675	0.656	$7.69 \pm 1.15 \pm 0.62$	$2.70 \pm 0.44 \pm 0.17$
[0.7,0.9]	0.772	0.437	[0.15,0.2]	0.174	0.319	1.515	0.683	0.672	$3.18 \pm 0.63 \pm 0.27$	$1.00 \pm 0.21 \pm 0.06$
[0.7,0.9]	0.772	0.442	[0.2,0.3]	0.244	0.379	1.314	0.685	0.672	$3.79 \pm 0.54 \pm 0.27$	$1.22 \pm 0.19 \pm 0.07$
[0.7,0.9]	0.773	0.443	[0.3,0.4]	0.344	0.433	1.111	0.684	0.668	$3.93 \pm 0.74 \pm 0.32$	$1.53 \pm 0.28 \pm 0.11$
[0.7,0.9]	0.774	0.442	[0.4,0.5]	0.445	0.469	0.978	0.682	0.665	$4.72 \pm 1.05 \pm 0.34$	$2.16 \pm 0.40 \pm 0.12$
[0.7,0.9]	0.775	0.440	[0.5,0.7]	0.580	0.506	0.869	0.676	0.659	$7.72 \pm 1.18 \pm 0.61$	$2.56 \pm 0.44 \pm 0.17$
[0.7,0.9]	0.776	0.458	[0.7,0.9]	0.776	0.461	0.735	0.664	0.651	$1350 \pm 2.34 \pm 1.50$	$3.52 \pm 0.83 \pm 0.18$

and polar angle of the analysis axis, after all corrections and systematic uncertainties discussed in the previous sections are applied. We also report the asymmetry measured in RF12 in a four-dimensional space, as a function of $(z_1, z_2, p_{11}, p_{12})$.

A. Collins asymmetries vs fractional energies

The Collins asymmetries measured for each (z_1, z_2) bin are summarized in Tables I and II, and illustrated in Fig. 14 and Fig. 15, for RF12 and RF0, respectively. In each plot the asymmetries are reported for every z_2 bin in a given interval of z_1 . We note a very good consistency among symmetric bins, with z_1 and z_2 exchanged, giving additional confidence on the correctness of the fitting procedure. A rise of the asymmetries with increasing pion energies is clearly visible in all plots, in agreement with

theoretical predictions [45–47] and Belle results [19,20]. The measured values span more than an order of magnitude, being about 1–2% in the lower (z_1, z_2) bins, and close to 40% for A_{12}^{UL} at the highest energies.

The measured UC asymmetries are smaller than the UL asymmetries by roughly a factor of 2. This behavior was already observed by Belle, and should reflect the different contribution of favored and disfavored fragmentation functions to the UC and UL ratios, as discussed in Sec. VI. An analysis of Belle data, under the assumption

$$H_1^{\text{fav}(\text{dis})}(z) = C_{\text{fav}(\text{dis})} z D_1^{\text{fav}(\text{dis})}(z), \quad (24)$$

found values for the parameters C_{fav} and C_{dis} consistent with a large disfavored Collins fragmentation function with

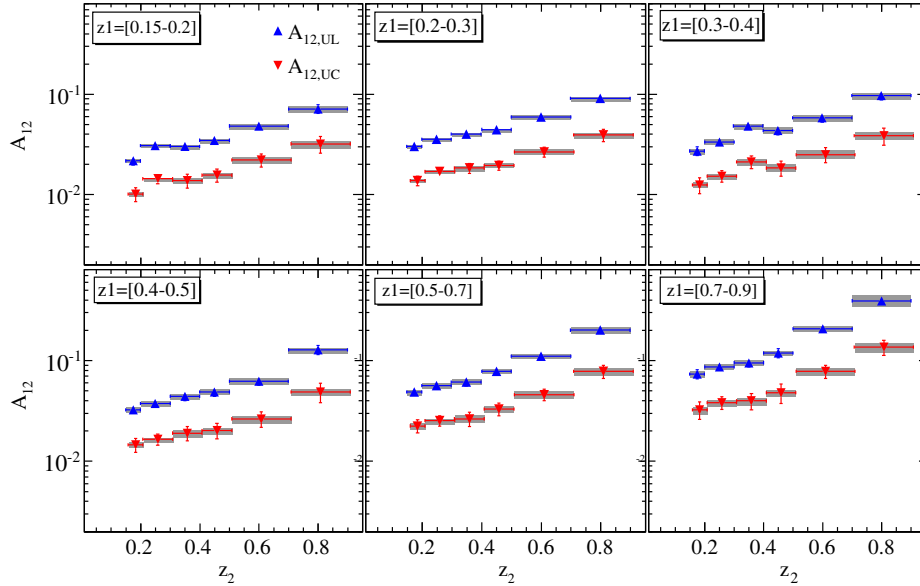


FIG. 14 (color online). Collins asymmetries for light quarks measured in bins of fractional energies (z_1, z_2) , in RF12. Asymmetries for the UL (up triangles) and UC (down triangles) ratios are reported, with statistical error bars and systematic uncertainties represented by the bands around the points.

sign opposite to the favored one [31], as also suggested by the HERMES experiment [13].

B. Collins asymmetries vs transverse momenta

The Collins asymmetries measured in the two reference frames, in bins of (p_{t1}, p_{t2}) and p_{t0} , are shown in Fig. 16 and Table III. The results from the two double ratios are reported. This is the first measurement of the dependence

on the pion transverse momenta in e^+e^- annihilation, and is important for a theoretical understanding of the evolution of the Collins fragmentation function. In RF0 the measured asymmetries are consistent with zero at very low p_{t0} , rise almost linearly up to about 2% for UL and 1% for UC, at 0.8 GeV, and then flat. In RF12 the asymmetries slightly differ from zero at low transverse momenta, and exhibit also in this case a smooth rise of the asymmetries with (p_{t1}, p_{t2}) up to a maximum of about 7% and 3% for UL and

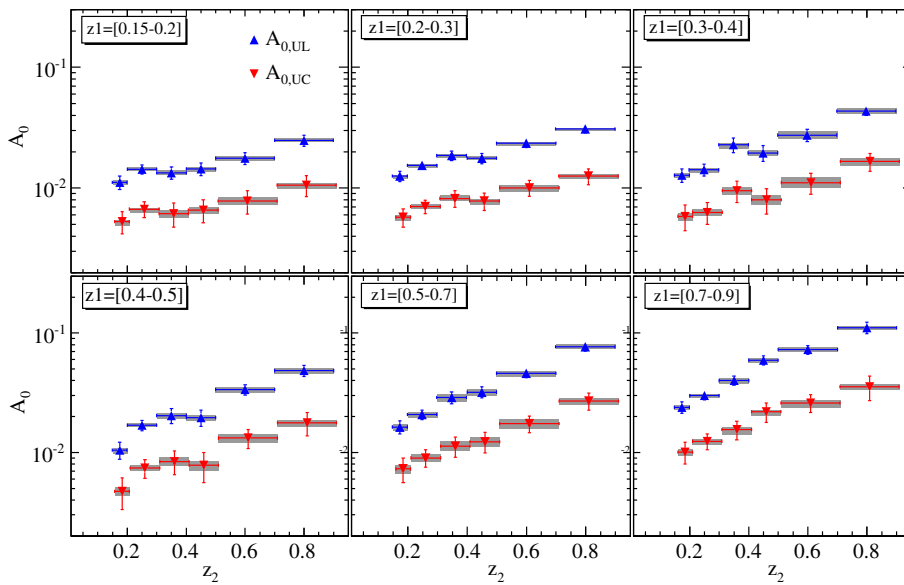


FIG. 15 (color online). Collins asymmetries for light quarks measured in bins of fractional energies (z_1, z_2) , in RF0. Asymmetries for the UL (up triangles) and UC (down triangles) ratios are reported, with statistical error bars and systematic uncertainties represented by the bands around the points.

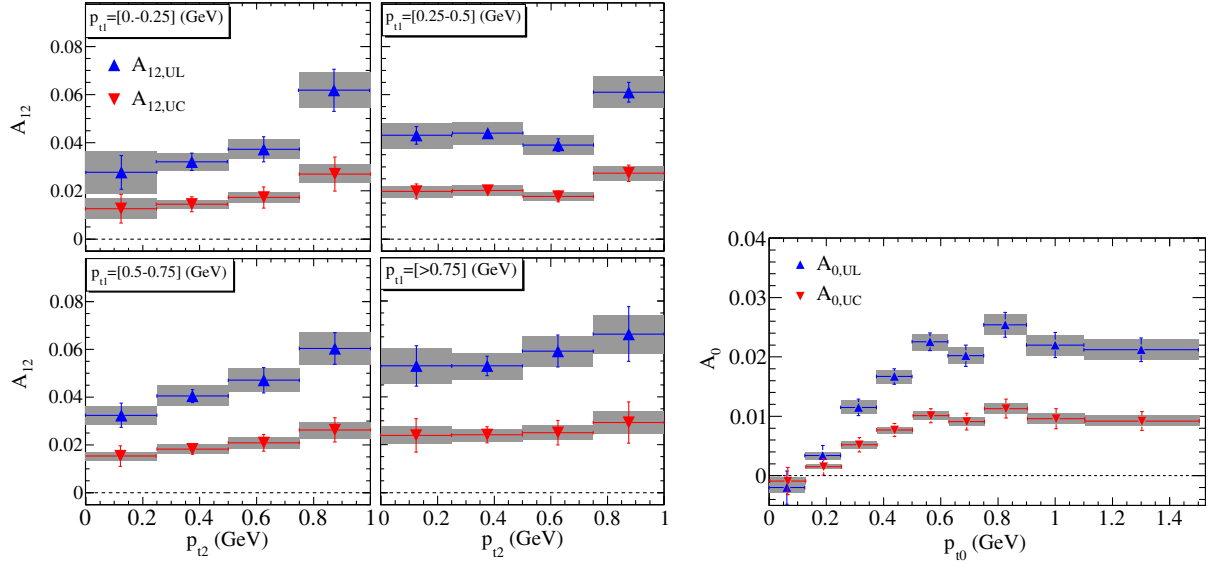


FIG. 16 (color online). Collins asymmetries for light quarks measured in (p_{t1}, p_{t2}) bins in RF12 (left plots), and in nine bins of p_{t0} (right plot) in RF0. Asymmetries for the UL (up triangles) and UC (down triangles) ratios are reported, with statistical error bars and systematic uncertainties represented by the bands around the points.

TABLE III. Azimuthal asymmetries obtained by fitting the UL and UC double ratios in bins of p_r . The upper (lower) table summarizes the results for RF12 (RF0). The errors are statistical and systematic. The table also reports the average values of z_i and p_{ti} and $\sin^2 \theta / (1 + \cos^2 \theta)$ in the corresponding (p_{t1}, p_{t2}) or p_{t0} bin.

p_{t1} (GeV)	$\langle p_{t1} \rangle$ (GeV)	$\langle z_1 \rangle$	p_{t2} (GeV)	$\langle p_{t2} \rangle$ (GeV)	$\langle z_2 \rangle$	$\langle \frac{\sin^2 \theta_{th}}{1 + \cos^2 \theta_{th}} \rangle$	A_{12}^{UL}	A_{12}^{UC}
[0.,0.25]	0.163	0.258	[0.,0.25]	0.163	0.258	0.690	$2.77 \pm 0.70 \pm 0.88$	$1.26 \pm 0.59 \pm 0.43$
[0.,0.25]	0.163	0.260	[0.25,0.5]	0.370	0.263	0.700	$3.18 \pm 0.36 \pm 0.37$	$1.44 \pm 0.31 \pm 0.18$
[0.,0.25]	0.161	0.261	[0.5,0.75]	0.596	0.308	0.708	$3.73 \pm 0.52 \pm 0.41$	$1.73 \pm 0.44 \pm 0.21$
[0.,0.25]	0.161	0.263	[> 0.75]	0.895	0.412	0.708	$6.17 \pm 0.87 \pm 0.73$	$2.70 \pm 0.71 \pm 0.39$
[0.25,0.5]	0.370	0.263	[0.,0.25]	0.163	0.260	0.700	$4.28 \pm 0.37 \pm 0.53$	$1.95 \pm 0.31 \pm 0.23$
[0.25,0.5]	0.367	0.270	[0.25,0.5]	0.366	0.270	0.711	$4.40 \pm 0.18 \pm 0.47$	$2.01 \pm 0.15 \pm 0.22$
[0.25,0.5]	0.365	0.275	[0.5,0.75]	0.596	0.322	0.720	$3.90 \pm 0.26 \pm 0.41$	$1.77 \pm 0.22 \pm 0.19$
[0.25,0.5]	0.363	0.278	[> 0.75]	0.890	0.424	0.721	$6.10 \pm 0.41 \pm 0.65$	$2.73 \pm 0.34 \pm 0.30$
[0.5,0.75]	0.596	0.308	[0.,0.25]	0.161	0.262	0.708	$3.23 \pm 0.51 \pm 0.38$	$1.51 \pm 0.43 \pm 0.19$
[0.5,0.75]	0.596	0.321	[0.25,0.5]	0.365	0.275	0.720	$4.05 \pm 0.27 \pm 0.43$	$1.83 \pm 0.22 \pm 0.19$
[0.5,0.75]	0.595	0.324	[0.5,0.75]	0.595	0.326	0.731	$4.71 \pm 0.53 \pm 0.50$	$2.09 \pm 0.35 \pm 0.24$
[0.5,0.75]	0.595	0.330	[> 0.75]	0.885	0.423	0.735	$6.04 \pm 0.66 \pm 0.69$	$2.63 \pm 0.51 \pm 0.35$
[> 0.75]	0.895	0.412	[0.,0.25]	0.161	0.264	0.709	$5.29 \pm 0.84 \pm 0.74$	$2.39 \pm 0.70 \pm 0.37$
[> 0.75]	0.890	0.423	[0.25,0.5]	0.363	0.279	0.721	$5.27 \pm 0.41 \pm 0.55$	$2.40 \pm 0.34 \pm 0.26$
[> 0.75]	0.885	0.422	[0.5,0.75]	0.595	0.331	0.735	$5.91 \pm 0.67 \pm 0.63$	$2.50 \pm 0.51 \pm 0.31$
[> 0.75]	0.881	0.425	[> 0.75]	0.880	0.426	0.743	$6.62 \pm 1.14 \pm 0.80$	$2.93 \pm 0.86 \pm 0.46$

p_{t0} (GeV)	$\langle p_{t0} \rangle$ (GeV)	$\langle z_1 \rangle$	$\langle z_2 \rangle$	$\langle \frac{\sin^2 \theta_2}{1 + \cos^2 \theta_2} \rangle$	A_0^{UL}	A_0^{UC}
[0.,0.125]	0.083	0.230	0.300	0.685	$-0.20 \pm 0.28 \pm 0.08$	$-0.09 \pm 0.23 \pm 0.06$
[0.125,0.25]	0.194	0.231	0.299	0.683	$0.34 \pm 0.17 \pm 0.06$	$0.15 \pm 0.14 \pm 0.04$
[0.25,0.375]	0.315	0.233	0.295	0.680	$1.15 \pm 0.14 \pm 0.11$	$0.52 \pm 0.12 \pm 0.06$
[0.375,0.5]	0.438	0.239	0.289	0.678	$1.67 \pm 0.13 \pm 0.11$	$0.76 \pm 0.11 \pm 0.06$
[0.5,0.625]	0.558	0.258	0.281	0.677	$2.24 \pm 0.15 \pm 0.14$	$1.01 \pm 0.12 \pm 0.07$
[0.625,0.75]	0.683	0.302	0.276	0.677	$2.02 \pm 0.18 \pm 0.14$	$0.91 \pm 0.14 \pm 0.07$
[0.75,0.9]	0.818	0.349	0.270	0.677	$2.54 \pm 0.21 \pm 0.17$	$1.13 \pm 0.16 \pm 0.09$
[0.9,1.1]	0.989	0.406	0.262	0.677	$2.20 \pm 0.21 \pm 0.17$	$0.96 \pm 0.17 \pm 0.09$
[1.1,1.5]	1.258	0.488	0.252	0.678	$2.12 \pm 0.20 \pm 0.17$	$0.92 \pm 0.16 \pm 0.09$

TABLE IV. Collins asymmetries in percent obtained by fitting the UL double ratios in bins of $(z_1, z_2, p_{t1}, p_{t2})$, in RF12. Each four-dimensional bin is identified by two pairs of digits. The pair on the first row identify the p_{t1} and p_{t2} intervals, with “0,” “1,” and “2,” corresponding to the three bins $p_t < 0.25$ GeV, $0.25 < p_t < 0.5$ GeV, and $0.5 \text{ GeV} < p_t$, respectively. The pair on the first column identify the z_1 and z_2 intervals, with “0,” “1,” “2,” and “3,” referring to $0.15 < z < 0.2$, $0.2 < z < 0.3$, $0.3 < z < 0.5$, and $0.5 < z < 0.9$, respectively. The error shown is the sum in quadrature of the statistical and systematic uncertainties.

		$A_{12}^{UL} (10^{-2})$							
		(p_{t1}, p_{t2})							
(z_1, z_2)	(0,0)	(0,1)	(0,2)	(1,0)	(1,1)	(1,2)	(2,0)	(2,1)	(2,2)
(0,0)	-0.01 ± 1.33	1.63 ± 0.83	1.37 ± 2.03	2.68 ± 0.87	3.41 ± 0.65	0.25 ± 1.28	3.17 ± 2.01	2.16 ± 1.24	-5.29 ± 2.97
(0,1)	3.72 ± 1.57	1.80 ± 0.77	2.48 ± 1.09	3.14 ± 0.95	4.50 ± 0.56	3.48 ± 0.73	2.24 ± 2.17	2.09 ± 1.11	2.16 ± 1.64
(0,2)	3.52 ± 2.11	2.28 ± 0.96	3.06 ± 0.89	3.22 ± 1.41	3.71 ± 0.64	3.62 ± 0.60	-0.60 ± 3.33	0.02 ± 1.24	2.74 ± 1.46
(0,3)	8.66 ± 4.26	3.71 ± 1.53	4.70 ± 1.02	5.66 ± 2.74	5.86 ± 1.09	6.61 ± 0.70	2.29 ± 6.04	1.20 ± 1.64	3.41 ± 1.74
(1,0)	2.59 ± 1.53	1.07 ± 0.93	5.11 ± 2.32	3.36 ± 0.79	2.82 ± 0.50	3.68 ± 1.21	1.60 ± 1.10	2.08 ± 0.78	3.28 ± 1.65
(1,1)	1.83 ± 1.61	3.78 ± 0.90	4.66 ± 1.27	4.78 ± 0.92	4.19 ± 0.47	3.38 ± 0.66	5.34 ± 1.28	4.10 ± 0.68	3.25 ± 1.01
(1,2)	4.77 ± 2.35	4.88 ± 1.10	4.57 ± 1.05	2.56 ± 1.32	5.91 ± 0.68	4.36 ± 0.56	5.20 ± 1.94	2.13 ± 0.71	4.31 ± 0.88
(1,3)	2.35 ± 4.01	3.86 ± 1.37	6.28 ± 1.10	8.50 ± 3.00	5.63 ± 1.00	7.94 ± 0.64	-2.73 ± 3.45	4.16 ± 1.04	5.30 ± 0.95
(2,0)	0.65 ± 2.22	3.20 ± 1.44	1.10 ± 3.37	2.41 ± 0.96	3.27 ± 0.63	2.54 ± 1.47	2.95 ± 0.91	4.85 ± 0.74	2.17 ± 1.47
(2,1)	1.12 ± 2.32	1.93 ± 1.36	0.27 ± 1.87	4.88 ± 1.14	4.36 ± 0.62	2.09 ± 0.83	3.33 ± 1.01	4.61 ± 0.65	3.80 ± 0.86
(2,2)	5.59 ± 3.15	3.68 ± 1.58	5.28 ± 1.61	5.36 ± 1.80	4.58 ± 0.73	5.08 ± 0.75	4.96 ± 1.63	4.70 ± 0.73	3.82 ± 0.71
(2,3)	-1.59 ± 3.93	7.04 ± 2.27	5.91 ± 1.57	6.24 ± 2.95	7.50 ± 1.27	8.13 ± 0.84	-3.36 ± 2.99	4.62 ± 0.98	7.39 ± 0.85
(3,0)	3.96 ± 3.94	3.36 ± 2.94	0.88 ± 6.24	3.16 ± 1.54	6.64 ± 1.13	3.51 ± 2.39	4.34 ± 1.00	9.24 ± 1.12	5.59 ± 1.79
(3,1)	4.04 ± 3.97	7.95 ± 2.86	1.95 ± 3.21	4.98 ± 1.51	5.78 ± 1.00	4.34 ± 1.35	6.08 ± 1.10	9.56 ± 0.92	5.23 ± 0.96
(3,2)	-0.34 ± 4.49	8.76 ± 3.27	8.97 ± 3.43	5.48 ± 2.23	6.19 ± 1.14	7.04 ± 1.21	3.14 ± 1.52	9.75 ± 1.00	8.12 ± 0.82
(3,3)	1679 ± 8.84	8.99 ± 4.10	7.06 ± 2.84	1779 ± 4.12	1223 ± 2.12	1261 ± 1.36	1224 ± 3.34	1068 ± 1.31	1676 ± 1.14

TABLE V. Collins asymmetries in percent obtained by fitting the UC double ratios in bins of $(z_1, z_2, p_{t1}, p_{t2})$, in RF12. Each four-dimensional bin is identified by two pairs of digits. The pair on the first row identify the p_{t1} and p_{t2} intervals, with “0,” “1,” and “2,” corresponding to the three bins $p_t < 0.25$ GeV, $0.25 < p_t < 0.5$ GeV, and $0.5 \text{ GeV} < p_t$, respectively. The pair on the first column identify the z_1 and z_2 intervals, with “0,” “1,” “2,” and “3,” referring to $0.15 < z < 0.2$, $0.2 < z < 0.3$, $0.3 < z < 0.5$, and $0.5 < z < 0.9$, respectively. The error shown is the sum in quadrature of the statistical and systematic uncertainties.

		$A_{12}^{UC} (10^{-2})$							
		(p_{t1}, p_{t2})							
(z_1, z_2)	(0,0)	(0,1)	(0,2)	(1,0)	(1,1)	(1,2)	(2,0)	(2,1)	(2,2)
(0,0)	-0.07 ± 1.14	0.76 ± 0.71	0.62 ± 1.71	1.28 ± 0.72	1.64 ± 0.50	0.27 ± 1.08	1.54 ± 1.71	1.06 ± 1.05	-2.12 ± 2.26
(0,1)	1.70 ± 1.30	0.88 ± 0.65	1.15 ± 0.90	1.46 ± 0.79	2.10 ± 0.44	1.63 ± 0.61	0.89 ± 1.84	1.05 ± 0.94	0.98 ± 1.34
(0,2)	1.97 ± 1.84	1.14 ± 0.81	1.43 ± 0.74	1.50 ± 1.21	1.73 ± 0.52	1.65 ± 0.49	0.53 ± 2.76	0.17 ± 1.04	1.28 ± 1.20
(0,3)	3.04 ± 3.44	1.68 ± 1.28	2.18 ± 0.84	2.66 ± 2.35	2.69 ± 0.91	3.04 ± 0.57	0.29 ± 5.15	1.13 ± 1.42	1.73 ± 1.46
(1,0)	1.19 ± 1.29	0.49 ± 0.80	2.34 ± 1.95	1.62 ± 0.66	1.28 ± 0.42	1.67 ± 1.01	0.73 ± 0.92	0.97 ± 0.65	1.65 ± 1.35
(1,1)	0.86 ± 1.37	1.72 ± 0.75	2.20 ± 1.03	2.19 ± 0.76	1.93 ± 0.39	1.55 ± 0.54	2.45 ± 1.03	1.88 ± 0.55	1.59 ± 0.81
(1,2)	2.14 ± 1.93	2.25 ± 0.90	2.03 ± 0.85	1.06 ± 1.12	2.64 ± 0.50	1.96 ± 0.44	2.37 ± 1.55	0.98 ± 0.57	1.94 ± 0.67
(1,3)	0.17 ± 3.42	1.97 ± 1.29	2.61 ± 0.91	3.68 ± 2.28	2.48 ± 0.81	3.49 ± 0.50	-1.77 ± 3.05	2.03 ± 0.84	2.59 ± 0.77
(2,0)	0.34 ± 1.88	1.43 ± 1.21	0.89 ± 2.77	1.16 ± 0.80	1.50 ± 0.52	1.14 ± 1.24	1.32 ± 0.75	2.24 ± 0.59	1.33 ± 1.19
(2,1)	0.67 ± 1.95	0.89 ± 1.13	0.24 ± 1.53	2.19 ± 0.90	1.93 ± 0.48	0.99 ± 0.67	1.58 ± 0.84	2.09 ± 0.50	1.76 ± 0.68
(2,2)	2.71 ± 2.58	1.65 ± 1.27	2.43 ± 1.27	2.41 ± 1.34	2.01 ± 0.58	2.26 ± 0.55	2.19 ± 1.27	2.04 ± 0.55	1.70 ± 0.52
(2,3)	-2.41 ± 3.99	2.59 ± 1.81	2.43 ± 1.29	2.67 ± 2.44	2.94 ± 0.93	3.35 ± 0.61	-1.43 ± 2.47	1.87 ± 0.75	2.98 ± 0.61
(3,0)	1.52 ± 3.38	1.98 ± 2.48	2.37 ± 5.49	1.49 ± 1.25	2.91 ± 0.91	1.75 ± 2.10	1.99 ± 0.83	4.21 ± 0.84	2.58 ± 1.50
(3,1)	2.43 ± 3.35	3.70 ± 2.28	0.83 ± 2.87	2.42 ± 1.28	2.49 ± 0.81	2.20 ± 1.12	2.72 ± 0.89	4.38 ± 0.71	2.43 ± 0.77
(3,2)	-1.10 ± 4.19	4.32 ± 2.50	3.91 ± 2.71	2.29 ± 1.79	2.57 ± 0.92	2.92 ± 0.95	1.22 ± 1.29	4.19 ± 0.78	3.40 ± 0.62
(3,3)	5.82 ± 7.57	3.43 ± 3.40	2.64 ± 2.57	8.57 ± 3.43	4.47 ± 1.48	5.05 ± 1.06	5.35 ± 2.78	4.57 ± 1.05	6.21 ± 0.78

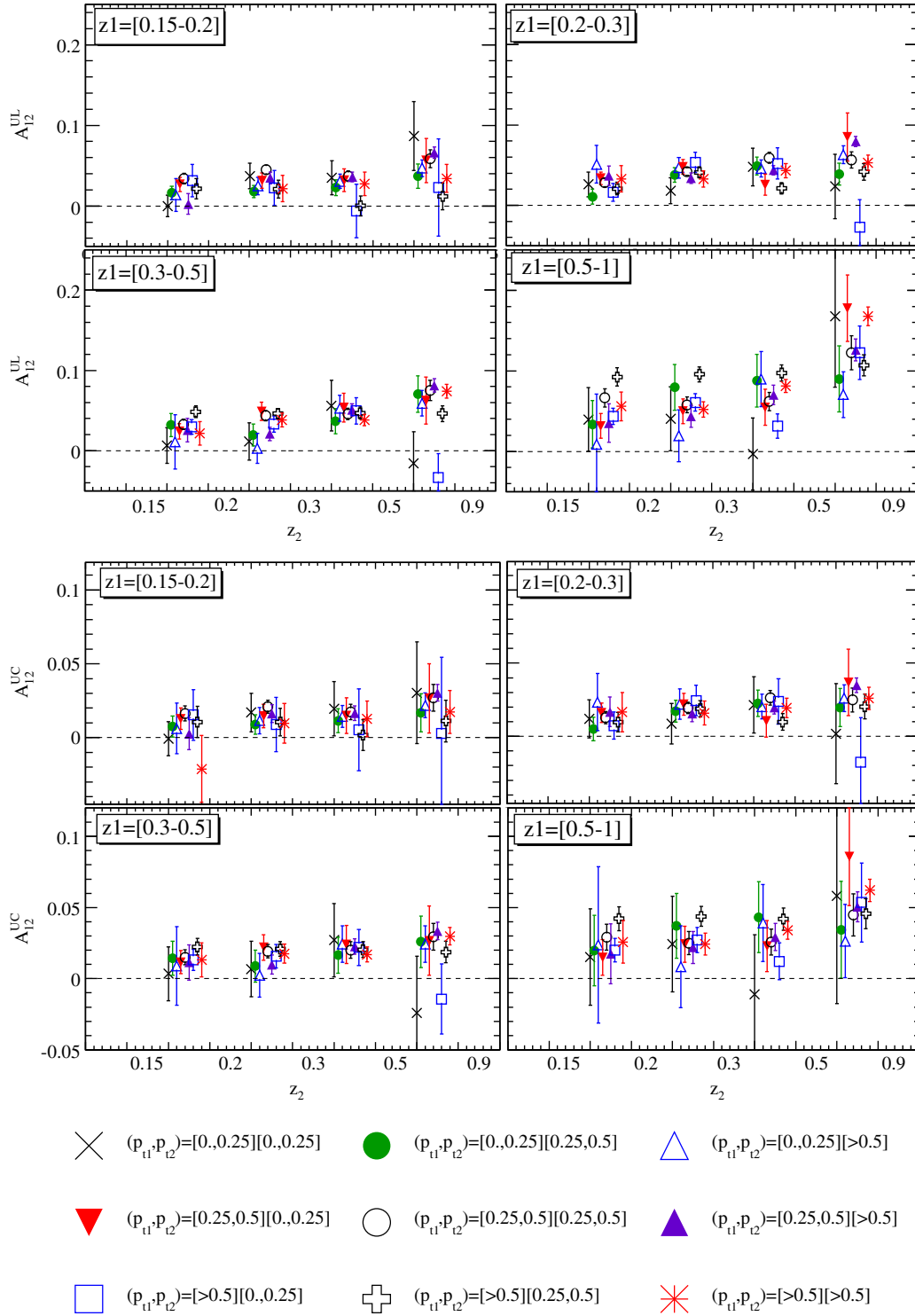


FIG. 17 (color online). Light quark asymmetry A_{12}^{UL} (up) and A_{12}^{UC} (down) calculated in the RF12 frame as a function of $(z_1, z_2, p_{t1}, p_{t2})$. The plots show the (z_1, z_2) dependence for each (p_{t1}, p_{t2}) interval, identified by the different markers and colors as described in the legend.

UC, respectively. Due to the limited resolution at very low transverse momenta it is not possible to verify the expected vanishing of A_{12} with $p_{t1,2}$ going to zero. The average $p_{t1,2}$ value for the lowest bin is, in fact, 0.16 GeV.

C. Collins asymmetries vs z and p_t

The study of the asymmetry behavior as a function of both pion fractional energies $z_{1,2}$ and transverse momentum $p_{t1,2}$ is an important test to probe the factorization of the Collins

TABLE VI. Mean values of z_1, z_2 (first line), p_{t1}, p_{t2} (second line), and $\sin^2 \theta_{th}/(1 + \cos^2 \theta_{th})$ (third line) for each $z - p_t$ bin. Each four-dimensional bin is identified by two pairs of digits. The pair on the second row identify the p_{t1} and p_{t2} intervals, with “0,” “1,” and “2,” corresponding to the three bins $p_t < 0.25$ GeV, $0.25 < p_t < 0.5$ GeV, and 0.5 GeV $< p_t$, respectively. The pair on the first column identify the z_1 and z_2 intervals, with “0,” “1,” “2,” and “3,” referring to $0.15 < z < 0.2$, $0.2 < z < 0.3$, $0.3 < z < 0.5$, and $0.5 < z < 0.9$, respectively.

$z - p_t$ bins	$\langle z_1 \rangle \langle z_2 \rangle$		$\langle p_{t1} \rangle \langle p_{t2} \rangle$		$\langle \frac{\sin^2 \theta_{th}}{1 + \cos^2 \theta_{th}} \rangle$				
	(p_{t1}, p_{t2})								
(z_1, z_2)	(0,0)	(0,1)	(0,2)	(1,0)	(1,1)	(1,2)	(2,0)	(2,1)	(2,2)
(0,0)	0.172 0.172 0.164 0.164 0.694	0.173 0.173 0.162 0.364 0.709	0.173 0.179 0.155 0.560 0.723	0.173 0.173 0.364 0.161 0.709	0.174 0.174 0.355 0.355 0.727	0.173 0.178 0.360 0.564 0.742	0.179 0.173 0.561 0.155 0.722	0.178 0.173 0.565 0.360 0.742	0.177 0.178 0.567 0.565 0.753
(0,1)	0.172 0.241 0.164 0.163 0.692	0.172 0.242 0.164 0.371 0.703	0.173 0.249 0.159 0.622 0.718	0.173 0.242 0.366 0.162 0.706	0.174 0.244 0.357 0.365 0.719	0.174 0.250 0.355 0.621 0.739	0.179 0.242 0.559 0.157 0.718	0.178 0.243 0.564 0.365 0.735	0.178 0.248 0.566 0.627 0.753
(0,2)	0.172 0.371 0.164 0.163 0.689	0.172 0.372 0.164 0.375 0.696	0.173 0.380 0.163 0.695 0.709	0.173 0.372 0.367 0.163 0.700	0.173 0.374 0.363 0.373 0.709	0.174 0.384 0.355 0.675 0.725	0.179 0.373 0.558 0.160 0.711	0.179 0.375 0.560 0.368 0.723	0.178 0.381 0.564 0.680 0.745
(0,3)	0.173 0.626 0.165 0.162 0.685	0.173 0.612 0.165 0.375 0.688	0.173 0.602 0.164 0.752 0.686	0.173 0.627 0.367 0.162 0.694	0.173 0.613 0.366 0.374 0.697	0.173 0.605 0.359 0.728 0.698	0.179 0.629 0.557 0.160 0.705	0.179 0.614 0.558 0.370 0.708	0.179 0.604 0.560 0.709 0.717
(1,0)	0.242 0.172 0.163 0.164 0.692	0.242 0.173 0.162 0.366 0.705	0.242 0.179 0.157 0.558 0.718	0.242 0.172 0.371 0.164 0.703	0.244 0.174 0.365 0.357 0.719	0.243 0.178 0.365 0.562 0.735	0.249 0.173 0.621 0.159 0.718	0.249 0.174 0.621 0.355 0.739	0.248 0.178 0.628 0.564 0.753
(1,1)	0.242 0.242 0.163 0.163 0.691	0.242 0.242 0.163 0.371 0.701	0.242 0.248 0.161 0.624 0.715	0.242 0.242 0.371 0.163 0.701	0.243 0.243 0.369 0.369 0.713	0.244 0.250 0.362 0.617 0.730	0.248 0.242 0.624 0.161 0.715	0.250 0.244 0.617 0.362 0.730	0.249 0.249 0.624 0.623 0.751
(1,2)	0.242 0.372 0.164 0.163 0.688	0.242 0.373 0.164 0.375 0.694	0.242 0.380 0.163 0.699 0.706	0.242 0.372 0.371 0.163 0.696	0.242 0.373 0.371 0.374 0.704	0.243 0.382 0.367 0.682 0.719	0.248 0.372 0.627 0.162 0.708	0.249 0.375 0.619 0.370 0.718	0.250 0.384 0.617 0.671 0.738
(1,3)	0.242 0.627 0.164 0.162 0.684	0.242 0.614 0.164 0.375 0.687	0.242 0.603 0.163 0.754 0.687	0.243 0.628 0.371 0.162 0.690	0.243 0.614 0.371 0.375 0.695	0.243 0.604 0.369 0.743 0.696	0.248 0.628 0.628 0.161 0.701	0.248 0.612 0.622 0.373 0.705	0.250 0.605 0.612 0.712 0.712
(2,0)	0.372 0.172 0.163 0.164 0.688	0.372 0.173 0.163 0.367 0.700	0.373 0.179 0.160 0.557 0.711	0.372 0.172 0.375 0.164 0.696	0.374 0.173 0.372 0.363 0.709	0.375 0.179 0.368 0.559 0.724	0.380 0.173 0.695 0.162 0.709	0.384 0.174 0.674 0.354 0.725	0.381 0.178 0.681 0.563 0.745
(2,1)	0.372 0.242 0.163 0.164 0.688	0.372 0.242 0.163 0.371 0.696	0.372 0.248 0.162 0.626 0.709	0.373 0.242 0.375 0.163 0.694	0.373 0.242 0.374 0.371 0.704	0.375 0.249 0.370 0.618 0.718	0.380 0.242 0.698 0.163 0.706	0.382 0.243 0.682 0.367 0.718	0.384 0.250 0.671 0.616 0.739
(2,2)	0.372 0.372 0.163 0.163 0.684	0.372 0.373 0.163 0.375 0.690	0.372 0.380 0.163 0.700 0.700	0.373 0.372 0.375 0.163 0.690	0.373 0.373 0.374 0.374 0.697	0.373 0.381 0.373 0.692 0.710	0.380 0.372 0.700 0.163 0.700	0.381 0.373 0.692 0.373 0.710	0.383 0.383 0.674 0.674 0.727
(2,3)	0.374 0.631 0.164 0.163 0.678	0.374 0.620 0.163 0.375 0.683	0.373 0.606 0.163 0.755 0.683	0.374 0.631 0.374 0.162 0.684	0.375 0.618 0.374 0.375 0.689	0.374 0.605 0.374 0.751 0.692	0.381 0.630 0.704 0.161 0.692	0.382 0.614 0.696 0.374 0.699	0.383 0.604 0.681 0.731 0.708
(3,0)	0.626 0.173 0.162 0.165 0.685	0.627 0.173 0.162 0.367 0.694	0.629 0.179 0.160 0.555 0.704	0.612 0.173 0.375 0.165 0.688	0.613 0.173 0.374 0.366 0.697	0.614 0.180 0.370 0.556 0.708	0.602 0.173 0.752 0.164 0.687	0.605 0.174 0.727 0.359 0.698	0.604 0.179 0.710 0.559 0.718
(3,1)	0.627 0.242 0.162 0.164 0.684	0.628 0.242 0.162 0.371 0.690	0.628 0.248 0.161 0.628 0.701	0.614 0.242 0.375 0.164 0.687	0.614 0.243 0.375 0.371 0.694	0.612 0.248 0.373 0.622 0.705	0.603 0.242 0.754 0.163 0.687	0.604 0.243 0.743 0.369 0.696	0.605 0.250 0.711 0.611 0.712
(3,2)	0.631 0.374 0.162 0.164 0.679	0.631 0.374 0.162 0.374 0.685	0.630 0.381 0.161 0.704 0.692	0.619 0.374 0.375 0.164 0.683	0.618 0.375 0.375 0.374 0.689	0.614 0.382 0.374 0.696 0.699	0.606 0.373 0.755 0.163 0.683	0.605 0.374 0.750 0.374 0.692	0.604 0.383 0.732 0.681 0.709
(3,3)	0.637 0.637 0.163 0.163 0.667	0.634 0.624 0.163 0.374 0.675	0.637 0.610 0.161 0.775 0.675	0.624 0.634 0.374 0.162 0.675	0.624 0.624 0.374 0.374 0.681	0.620 0.610 0.374 0.754 0.684	0.610 0.637 0.775 0.161 0.675	0.609 0.620 0.754 0.374 0.684	0.607 0.608 0.741 0.741 0.699

TABLE VII. Azimuthal asymmetries, in percent, obtained by fitting the UL and UC double ratios in bins of $\sin^2 \theta / (1 + \cos^2 \theta)$, where $\theta = \theta_{th}$ for RF12, and $\theta = \theta_2$ for RF0. The upper (lower) table summarizes the results for RF12 (RF0). The errors are statistical and systematic, respectively. The table also reports the average values of z_i , p_{ti} and $\sin^2 \theta / (1 + \cos^2 \theta)$ in the corresponding reference frames.

$\frac{\sin^2 \theta_{th}}{1 + \cos^2 \theta_{th}}$	$\langle z_1 \rangle$	$\langle z_2 \rangle$	$\langle p_{t1} \rangle$ (GeV)	$\langle p_{t2} \rangle$ (GeV)	$\langle \frac{\sin^2 \theta_{th}}{1 + \cos^2 \theta_{th}} \rangle$	A_{12}^{UL} (%)	A_{12}^{UC} (%)
[0.25–0.30]	0.281	0.282	0.344	0.344	0.276	$2.38 \pm 0.61 \pm 0.34$	$1.19 \pm 0.55 \pm 0.20$
[0.30–0.35]	0.281	0.282	0.342	0.342	0.326	$0.90 \pm 0.55 \pm 0.35$	$0.47 \pm 0.48 \pm 0.20$
[0.35–0.40]	0.280	0.281	0.343	0.343	0.376	$1.87 \pm 0.49 \pm 0.36$	$0.89 \pm 0.42 \pm 0.20$
[0.40–0.45]	0.280	0.279	0.345	0.345	0.425	$1.38 \pm 0.46 \pm 0.36$	$0.64 \pm 0.38 \pm 0.20$
[0.45–0.50]	0.277	0.278	0.348	0.350	0.475	$3.52 \pm 0.44 \pm 0.40$	$1.59 \pm 0.37 \pm 0.21$
[0.50–0.55]	0.276	0.277	0.350	0.353	0.525	$2.21 \pm 0.41 \pm 0.36$	$1.00 \pm 0.34 \pm 0.19$
[0.55–0.60]	0.275	0.276	0.353	0.355	0.575	$3.01 \pm 0.40 \pm 0.38$	$1.36 \pm 0.33 \pm 0.20$
[0.60–0.65]	0.275	0.275	0.355	0.355	0.625	$3.91 \pm 0.38 \pm 0.39$	$1.76 \pm 0.32 \pm 0.20$
[0.65–0.70]	0.274	0.275	0.356	0.356	0.675	$3.82 \pm 0.38 \pm 0.39$	$1.72 \pm 0.31 \pm 0.20$
[0.70–0.75]	0.274	0.274	0.358	0.358	0.725	$3.88 \pm 0.36 \pm 0.38$	$1.74 \pm 0.30 \pm 0.20$
[0.75–0.80]	0.274	0.274	0.359	0.359	0.775	$4.14 \pm 0.35 \pm 0.39$	$1.87 \pm 0.29 \pm 0.20$
[0.80–0.85]	0.274	0.274	0.360	0.359	0.825	$5.08 \pm 0.33 \pm 0.40$	$2.29 \pm 0.27 \pm 0.21$
[0.85–0.90]	0.273	0.274	0.360	0.360	0.876	$5.38 \pm 0.31 \pm 0.41$	$2.42 \pm 0.26 \pm 0.21$
[0.90–0.95]	0.273	0.273	0.360	0.360	0.926	$4.51 \pm 0.26 \pm 0.35$	$2.57 \pm 0.27 \pm 0.25$
[0.95–1]	0.273	0.273	0.361	0.361	0.982	$4.93 \pm 0.17 \pm 0.37$	$2.82 \pm 0.18 \pm 0.26$

$\frac{\sin^2 \theta_2}{1 + \cos^2 \theta_2}$	$\langle z_1 \rangle$	$\langle z_2 \rangle$	$\langle p_{t0} \rangle$ (GeV)	-	$\langle \frac{\sin^2 \theta_2}{1 + \cos^2 \theta_2} \rangle$	A_0^{UL} (%)	A_0^{UC} (%)
[0.25–0.30]	0.281	0.282	0.498		0.276	$1.87 \pm 0.27 \pm 0.27$	$0.84 \pm 0.22 \pm 0.13$
[0.30–0.35]	0.281	0.282	0.492		0.325	$1.41 \pm 0.25 \pm 0.27$	$0.63 \pm 0.21 \pm 0.13$
[0.35–0.40]	0.280	0.281	0.489		0.375	$1.85 \pm 0.25 \pm 0.27$	$0.84 \pm 0.21 \pm 0.13$
[0.40–0.45]	0.280	0.279	0.489		0.425	$1.40 \pm 0.25 \pm 0.27$	$0.63 \pm 0.21 \pm 0.13$
[0.45–0.50]	0.277	0.278	0.490		0.475	$1.63 \pm 0.25 \pm 0.27$	$0.73 \pm 0.21 \pm 0.13$
[0.50–0.55]	0.276	0.277	0.491		0.525	$1.86 \pm 0.25 \pm 0.27$	$0.83 \pm 0.21 \pm 0.13$
[0.55–0.60]	0.275	0.276	0.493		0.575	$2.37 \pm 0.25 \pm 0.27$	$1.06 \pm 0.21 \pm 0.13$
[0.60–0.65]	0.275	0.275	0.495		0.625	$1.74 \pm 0.25 \pm 0.27$	$0.78 \pm 0.21 \pm 0.13$
[0.65–0.70]	0.274	0.275	0.498		0.675	$1.49 \pm 0.24 \pm 0.27$	$0.67 \pm 0.20 \pm 0.13$
[0.70–0.75]	0.274	0.274	0.500		0.725	$2.30 \pm 0.24 \pm 0.27$	$1.04 \pm 0.20 \pm 0.13$
[0.75–0.80]	0.274	0.274	0.502		0.775	$2.13 \pm 0.23 \pm 0.27$	$0.96 \pm 0.19 \pm 0.13$
[0.80–0.85]	0.274	0.274	0.505		0.825	$2.03 \pm 0.22 \pm 0.27$	$0.91 \pm 0.18 \pm 0.13$
[0.85–0.90]	0.273	0.274	0.507		0.876	$2.27 \pm 0.21 \pm 0.27$	$1.02 \pm 0.17 \pm 0.13$
[0.90–0.95]	0.273	0.273	0.509		0.926	$2.21 \pm 0.19 \pm 0.27$	$1.00 \pm 0.15 \pm 0.13$
[0.95–1]	0.273	0.273	0.510		0.983	$2.14 \pm 0.12 \pm 0.27$	$0.97 \pm 0.10 \pm 0.13$

fragmentation function assumed in Ref. [23] and, in general, provides a powerful tool to access $p_t - z$ correlations in the Collins asymmetries. We perform this study in the thrust reference frame, using four z_i and three p_{ti} ($i = 1, 2$) intervals. The boundaries for the fractional energies intervals are set to $z_i = 0.15, 0.2, 0.3, 0.5$, and 0.9 , while the intervals

for the transverse momenta are $p_{ti} < 0.25$ GeV, $0.25 < p_{ti} < 0.5$ GeV, and $p_{ti} > 0.5$ GeV. We estimate background contributions, dilution effects, and systematic uncertainties independently for each $(z_1, z_2, p_{t1}, p_{t2})$ bin, following the procedures described in the previous sections. The results are summarized in Tables IV–VI, and Fig. 17.

TABLE VIII. Results of the linear fits to the Collins asymmetries as functions of $\sin^2 \theta / (1 + \cos^2 \theta)$, where $\theta = \theta_{th}$ for RF12, and $\theta = \theta_2$ for RF0.

	A_{12}^{UL}	A_{12}^{UC}	A_0^{UL}	A_0^{UC}
p_0	-0.001 ± 0.005	-0.003 ± 0.003	0.014 ± 0.003	0.006 ± 0.002
p_1	0.055 ± 0.007	0.031 ± 0.005	0.009 ± 0.004	0.004 ± 0.003
χ^2/ndf	1.1	0.4	0.5	0.2
p_0 fixed	0	0	0	0
p_1	0.053 ± 0.002	0.027 ± 0.001	0.028 ± 0.002	0.012 ± 0.001
χ^2/ndf	1.0	0.4	2.0	1.0

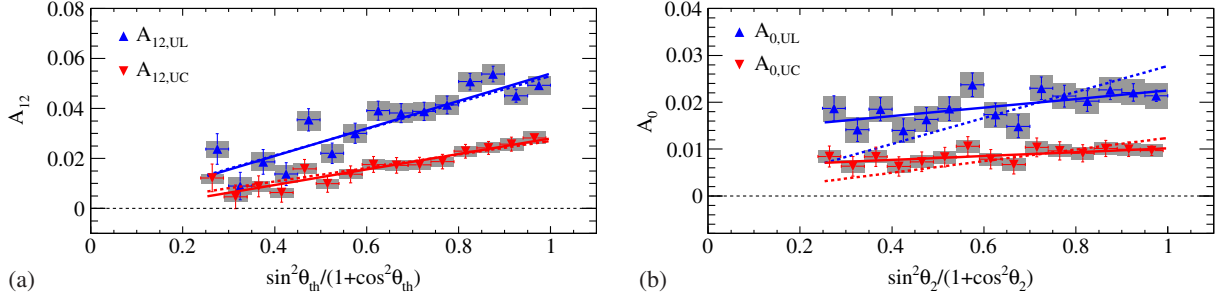


FIG. 18 (color online). Light quark asymmetry parameters calculated in RF12 (a) and in RF0 (b), as a function of $\sin^2 \theta / (1 + \cos^2 \theta)$, where $\theta \equiv \theta_{\text{th}}$ in (a) and $\theta \equiv \theta_2$ in (b). The up triangles (blue online) refer to the UL asymmetry, while the down triangles (red online) to the UC asymmetry. Systematic contributions are shown by gray boxes. The result of the linear fits are shown as solid lines of the corresponding colors, and summarized in Table VIII. The dashed lines represent fitted lines through the origin.

D. Collins asymmetries vs polar angles

The transverse polarization of the original $q\bar{q}$ pair created in e^+e^- annihilation should be proportional to $\sin^2 \theta$, where θ is the polar angle of the $q\bar{q}$ axis with respect to the beam axis. The Collins asymmetry should manifest a similar dependence, as shown by Eqs. (15) and (17) for the UL and UC ratios, respectively. We can test this prediction, and in particular that the asymmetries vanish for $\theta = 0$, by studying the asymmetries as a function of the quantity $\sin^2 \theta / (1 + \cos^2 \theta)$ after integration over z and p_t , with the $q\bar{q}$ polar angle estimated by the polar angle of the thrust axis (θ_{th}) or of the reference hadron (θ_2). The results are displayed in Fig. 18 and summarized in Table VII. The asymmetries are corrected for background contributions and dilution effects, following the same procedure described in Secs. VII and VIII. As systematic uncertainties we assigned the average values of the significant contributions studied in Sec. IX, which are added in quadrature in Fig. 18 (gray error bands).

We subject each set of data points to a linear fit ($p_0 + p_1 \cdot x$), both with the intercept parameter floating and constrained to the origin of the axes ($p_0 = 0$). The results of these fits are summarized in Table VIII. For A_{12} , all four fits have a good χ^2 , and both fitted p_0 are consistent with zero [Fig. 18(a)]. Also the A_0 asymmetries are consistent with a linear dependence on $\sin^2 \theta / (1 + \cos^2 \theta)$, but the results clearly favor a nonzero constant term for both A_0^{UL} and A_0^{UC} [Fig. 18(b)]. This behavior is in contradiction with the cross section formula reported in Eq. (7), the origin of which is not understood.

XI. SUMMARY

We have presented a set of measurements of azimuthal asymmetries in inclusive production of charged pion pairs in $e^+e^- \rightarrow q\bar{q}$ annihilation, where the two pions arise from the fragmenting quarks in opposite jets. We consider two reference frames, and extract asymmetries from suitable ratios of normalized azimuthal distributions: the ratio of opposite-sign to same-sign pion pairs (UL double ratio) and the ratio of opposite-sign to any charge pion pairs (UC

double ratio). We observe clear, nonvanishing asymmetries that can be related to the Collins fragmentation functions.

We measure the Collins asymmetries as a function of several variables, including the transverse momenta p_t (p_{t1} and p_{t2} , and p_{t0}) of the pions with respect to the analysis axis, their fractional energies $z_{1,2}$, and polar angle θ of the analysis axis with respect to the beam axis.

The asymmetries rise with z_1 and z_2 , as expected from theoretical predictions, and span more than an order of magnitude. Our data are also consistent with the previous measurements performed by the Belle Collaboration [18,19], with the exception of the bins where the highest fractional energies are involved. In particular we measure an asymmetry about three standard deviations higher in the highest (z_1, z_2) bin. It must be noted, however, that the two data sets are not directly comparable, because of the different width of the highest z interval, which is $0.7 < z < 1.0$ for Belle, while we limit our study to $0.7 < z < 0.9$ for the reasons explained in Sec. IV.

Theoretical calculations with different approaches have been proposed to make predictions or to reproduce the available data (see for example Refs. [31,46] and references therein). The new precise data presented here can be used to improve the tuning of the various models and possibly discriminate among the different assumptions. These results can also be combined with Belle and SIDIS data to improve the simultaneous extraction of favored and disfavored H_1^\perp , and the transversity and other chiral-odd parton distributions, following, e.g., the approach of Ref. [23,24].

There is an increase of the asymmetries with increasing p_t , more pronounced in the RF0 system, and there is an indication that a maximum value of the asymmetry is reached at $p_t \approx 0.8 \times \text{GeV}$. The available data sample is not sufficient to effectively study the region above 1 GeV, and determine if the asymmetries decrease after the peak is reached. No previous data from e^+e^- annihilation are available to compare with. Assuming that the Q^2 evolution³

³In SIDIS processes Q^2 is the 4-momentum transferred from the lepton to the struck hadron, while in e^+e^- annihilation it is equal to s .

of the Collins function is the same as for the unpolarized function, the authors of Ref. [23] extracted the p_T dependence at $Q^2 = 2.4 \times \text{GeV}^2$. However, such an assumption on the evolution with Q^2 is not established, and even questionable, given the chiral-odd nature of the Collins function. Alternative choices have been proposed, including the extreme case that the Collins function does not evolve with the energy scale [46]. The measurement of the asymmetry as a function of p_T obtained by *BABAR* at $Q^2 \approx 110 \times \text{GeV}^2$, that is an energy scale much higher with respect to the data presently available from SIDIS, will be very valuable in shedding light on this important question.

We also measured the asymmetries in bins of the quantity $\sin^2 \theta / (1 + \cos^2 \theta)$, where θ is θ_{th} or θ_2 according to the reference frame used, as defined in Figs. 2 and 3, respectively. The expected linear dependence is observed in both reference frames. However in RF0 the fit result is inconsistent with a line crossing the origin, in disagreement with expectations.

ACKNOWLEDGMENTS

The authors would like to thank Ralf Seidl of the Belle Collaboration for fruitful discussions on the analysis method. We are also grateful to Mauro Anselmino and

Marco Contalbrigo, for helpful discussions on the theoretical aspects of the measurement. We are grateful for the extraordinary contributions of our PEP-II2 colleagues in achieving the excellent luminosity and machine conditions that have made this work possible. The success of this project also relies critically on the expertise and dedication of the computing organizations that support *BABAR*. The collaborating institutions wish to thank SLAC for its support and the kind hospitality extended to them. This work is supported by the U.S. Department of Energy and National Science Foundation, the Natural Sciences and Engineering Research Council (Canada), the Commissariat à l'Énergie Atomique and Institut National de Physique Nucléaire et de Physique des Particules (France), the Bundesministerium für Bildung und Forschung and Deutsche Forschungsgemeinschaft (Germany), the Istituto Nazionale di Fisica Nucleare (Italy), the Foundation for Fundamental Research on Matter (The Netherlands), the Research Council of Norway, the Ministry of Education and Science of the Russian Federation, Ministerio de Economía y Competitividad (Spain), and the Science and Technology Facilities Council (United Kingdom). Individuals have received support from the Marie-Curie IEF program (European Union) and the A. P. Sloan Foundation (USA).

-
- [1] D. Buskulic *et al.* (ALEPH Collaboration), *Z. Phys. C* **73**, 409 (1997).
 - [2] P. Abreu *et al.* (DELPHI Collaboration), *Eur. Phys. J. C* **6**, 19 (1999).
 - [3] OPAL Collaboration, *Eur. Phys. J. C* **37**, 25 (2004).
 - [4] G. Abrams, C. Adolphsen, D. Averill, J. Ballam, B. C. Barish *et al.*, *Phys. Rev. Lett.* **64**, 1334 (1990).
 - [5] A. Petersen, G. Abrams, C. Adolphsen, C. Akerlof, J. P. Alexander *et al.*, *Phys. Rev. D* **37**, 1 (1988).
 - [6] K. Abe *et al.* (SLD Collaboration), *Phys. Rev. D* **69**, 072003 (2004).
 - [7] J. P. Lees *et al.* (*BABAR* Collaboration), *Phys. Rev. D* **88**, 032011 (2013).
 - [8] M. Leitgab *et al.* (Belle Collaboration), *Phys. Rev. Lett.* **111**, 062002 (2013).
 - [9] J. C. Collins, *Nucl. Phys.* **B396**, 161 (1993).
 - [10] J. C. Collins, *Phys. Lett. B* **536**, 43 (2002).
 - [11] A. Bacchetta, U. D'Alesio, M. Diehl, and C. A. Miller, *Phys. Rev. D* **70**, 117504 (2004).
 - [12] A. Airapetian *et al.*, *Phys. Lett. B* **693**, 11 (2010).
 - [13] A. Airapetian *et al.* (HERMES Collaboration), *Phys. Rev. Lett.* **94**, 012002 (2005).
 - [14] C. Adolph *et al.*, *Phys. Lett. B* **717**, 376 (2012).
 - [15] M. Alekseev *et al.* (COMPASS Collaboration), *Phys. Lett. B* **692**, 240 (2010).
 - [16] J. P. Ralston and D. E. Soper, *Nucl. Phys.* **B152**, 109 (1979).
 - [17] A. V. Efremov, O. G. Smirnova, and L. G. Tkatchev, *Nucl. Phys. B, Proc. Suppl.* **74**, 49 (1999).
 - [18] R. Seidl *et al.* (Belle Collaboration), *Phys. Rev. Lett.* **96**, 232002 (2006).
 - [19] R. Seidl *et al.* (Belle Collaboration), *Phys. Rev. D* **78**, 032011 (2008).
 - [20] R. Seidl *et al.* (Belle Collaboration), *Phys. Rev. D* **86**, 039905(E) (2012).
 - [21] A. Metz, *Phys. Lett. B* **549**, 139 (2002).
 - [22] J. C. Collins and A. Metz, *Phys. Rev. Lett.* **93**, 252001 (2004).
 - [23] M. Anselmino, M. Boglione, U. D'Alesio, A. Kotzinian, F. Murgia, A. Prokudin, and C. Türk, *Phys. Rev. D* **75**, 054032 (2007).
 - [24] M. Anselmino, M. Boglione, U. D'Alesio, A. Kotzinian, F. Murgia, A. Prokudin, and S. Melis, *Nucl. Phys. B, Proc. Suppl.* **191**, 98 (2009).
 - [25] S. Brandt, C. Peyrou, R. Sosnowski, and A. Wroblewski, *Phys. Lett.* **12**, 57 (1964).
 - [26] E. Farhi, *Phys. Rev. Lett.* **39**, 1587 (1977).
 - [27] D. Boer, R. Jakob, and P. J. Mulders, *Nucl. Phys.* **B504**, 345 (1997).
 - [28] D. Boer, *Nucl. Phys.* **B806**, 23 (2009).
 - [29] M. Anselmino, M. Boglione, U. D'Alesio, E. Leader, S. Melis, and F. Murgia, *Phys. Rev. D* **73**, 014020 (2006).

- [30] A. Bacchetta, M. Boglione, A. Henneman, and P. J. Mulders, *Phys. Rev. Lett.* **85**, 712 (2000).
- [31] A. V. Efremov, K. Goetze, and P. Schweitzer, *Phys. Rev. D* **73**, 094025 (2006).
- [32] J. P. Lees *et al.* (BABAR Collaboration), *Nucl. Instrum. Methods Phys. Res., Sect. A* **726**, 203 (2013).
- [33] B. Aubert *et al.* (BABAR Collaboration), *Nucl. Instrum. Methods Phys. Res., Sect. A* **479**, 1 (2002).
- [34] B. Aubert *et al.* (BABAR Collaboration), *Nucl. Instrum. Methods Phys. Res., Sect. A* **729**, 615 (2013).
- [35] T. Sjöstrand, arXiv:hep-ph/9508391.
- [36] D. J. Lange, *Nucl. Instrum. Methods Phys. Res., Sect. A* **462**, 152 (2001).
- [37] B. F. L. Ward, S. Jadach, and Z. Was, *Nucl. Phys. B, Proc. Suppl.* **116**, 73 (2003).
- [38] H. Czyż, A. Grzebińska, J. H. Kühn, and G. Rodrigo, *Eur. Phys. J. C* **39**, 411 (2005).
- [39] S. Agostinelli *et al.* (GEANT4 Collaboration), *Nucl. Instrum. Methods Phys. Res., Sect. A* **506**, 250 (2003).
- [40] G. C. Fox and S. Wolfram, *Nucl. Phys.* **B149**, 413 (1979).
- [41] J. C. Collins, *Phys. Rev. Lett.* **42**, 291 (1979).
- [42] J. Beringer *et al.* (Particle Data Group), *Phys. Rev. D* **86**, 010001 (2012).
- [43] A. A. Sokolov and I. M. Ternov, *Sov. Phys. Dokl.* **8**, 1203 (1964).
- [44] J. G. Learned, L. K. Resvanis, and C. M. Spencer, *Phys. Rev. Lett.* **35**, 1688 (1975).
- [45] A. Bacchetta, R. Kundu, A. Metz, and P. Mulders, *Phys. Lett. B* **506**, 155 (2001).
- [46] A. Bacchetta, L. P. Gamberg, G. R. Goldstein, and A. Mukherjee, *Phys. Lett. B* **659**, 234 (2008).
- [47] N. H. Buttmore, E. Leader, and T. L. Trueman, *Phys. Rev. D* **64**, 094021 (2001).