

# UC Berkeley

## UC Berkeley Previously Published Works

### Title

The Use of Cell-Free Xenopus Extracts to Investigate Cytoplasmic Events

### Permalink

<https://escholarship.org/uc/item/79v7g63z>

### Journal

Cold Spring Harbor Protocols, 2019(6)

### ISSN

1940-3402

### Authors

Gibeaux, Romain  
Heald, Rebecca

### Publication Date

2019-06-01

### DOI

10.1101/pdb.top097048

### Copyright Information

This work is made available under the terms of a Creative Commons Attribution License, available at <https://creativecommons.org/licenses/by/4.0/>

Peer reviewed

## Topic Introduction

# The Use of Cell-Free *Xenopus* Extracts to Investigate Cytoplasmic Events

Romain Gibeaux<sup>1,2</sup> and Rebecca Heald<sup>1,3</sup>

<sup>1</sup>Department of Molecular and Cell Biology, University of California, Berkeley, Berkeley, California 94720-3200

Experiments using cytoplasmic extracts prepared from *Xenopus* eggs have made important contributions to our understanding of the cell cycle, the cytoskeleton, and cytoplasmic membrane systems. Here we introduce the extract system and describe methods for visualizing and manipulating diverse cytoplasmic processes, and for assaying the functions, dynamics, and stability of individual factors. These in vitro approaches uniquely enable investigation of events at specific cell cycle states, including the assembly of actin- and microtubule-based structures, and the formation of the endoplasmic reticulum. Maternal stockpiles in extracts recapitulate diverse processes in the near absence of gene expression, and this biochemical system combined with microscopy empowers a wide range of mechanistic investigations.

## BACKGROUND

Research utilizing *Xenopus laevis* oocytes, eggs, and cleavage-stage embryos has provided a number of important insights into the fundamental mechanisms of the meiotic and early mitotic cell cycles. The large size of the eggs, the ease of obtaining them in abundant quantities, their synchronous development, and the ability to microinject and analyze them biochemically led to the discovery of an intrinsic cytoplasmic activity with the same periodicity as the cell cycle (Hara et al. 1980; Gerhart et al. 1984). This activity, termed maturation-promoting factor (MPF), was identified as a highly conserved cell cycle regulatory complex containing cyclin-dependent kinase 1 (cdk1) and cyclin B (Maller et al. 1989). Activation of MPF induces both meiosis and mitosis, whereas its loss induces anaphase and subsequent entry into interphase. The fluctuation of MPF in oogenesis and early *Xenopus* embryos is shown in Figure 1. Hormone treatment of immature oocytes induces MPF activity and drives progression through meiosis I and arrest in metaphase of meiosis II. These eggs maintain high MPF due to cytostatic factor (CSF) activity, eventually identified as Emi2 (Rauh et al. 2005; Schmidt 2006). Upon fertilization, the fusion of the sperm and the egg induces a transient increase in calcium levels that inactivates both CSF and MPF. The first somatic cell cycle lasts 75 min, and subsequent cycles last 25 min. Unfertilized eggs can also be induced to exit CSF metaphase arrest by electrical shock or by treatment with a calcium ionophore.

Characterization of MPF in eggs and embryos was transformative for the cell cycle field. However, microinjection limited the variety of experimental perturbations, and the abundance of refractory yolk

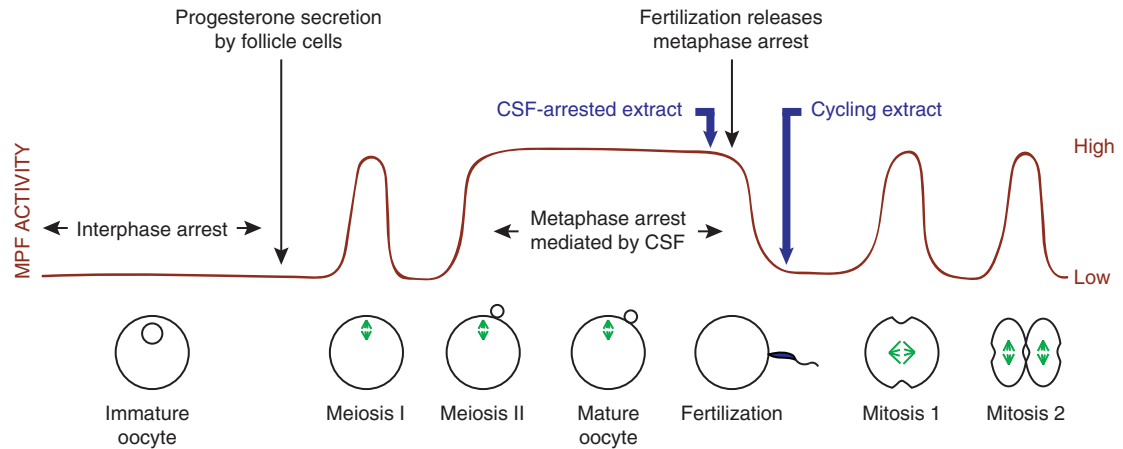
<sup>2</sup>Present address: Université de Rennes, National Center for Scientific Research, Institute of Genetics and Development of Rennes, UMR 6290, F-35000 Rennes, France

<sup>3</sup>Correspondence: [bheald@berkeley.edu](mailto:bheald@berkeley.edu)

From the *Xenopus* collection, edited by Hazel L. Sive.

© 2019 Cold Spring Harbor Laboratory Press

Advanced Online Article. Cite this introduction as *Cold Spring Harb Protoc*; doi:10.1101/pdb.top097048

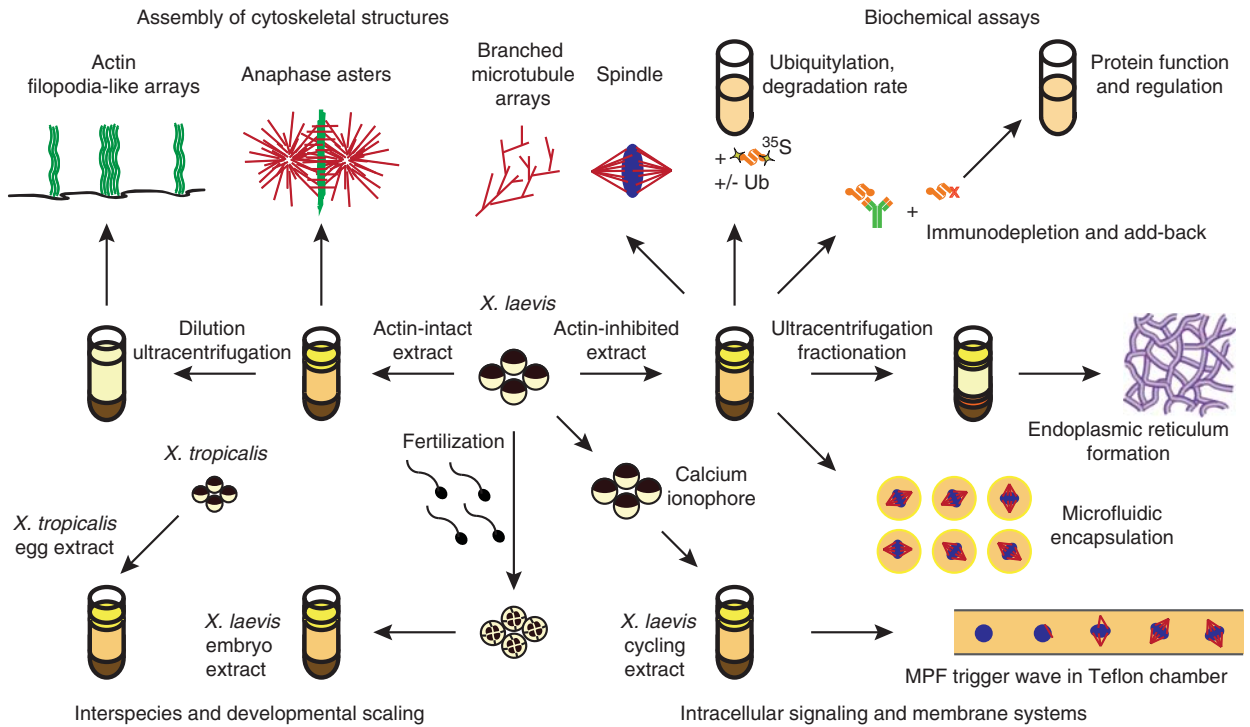


**FIGURE 1.** Schematic of the cell cycle of the *Xenopus* oocyte and early embryo. Immature oocytes stimulated with progesterone progress through meiosis I and arrest as unfertilized eggs in metaphase of meiosis II with high MPF and CSF activity. Fertilization induces oscillations in MPF activity that peak during mitosis. Points at which extracts are prepared are indicated. (Adapted from Murray [1991].)

platelets made examination of intracellular events in living frog embryos impossible. The development of methods for preparing cell-free extracts from *Xenopus* eggs by Lohka and Masui was a breakthrough that enabled investigation of the cell cycle and downstream events in vitro (Lohka and Masui 1983). By including the calcium chelator EGTA (ethylene glycol-bis( $\beta$ -aminoethyl ether)-N,N,N',N'-tetraacetic acid) in the buffer, egg extracts that stably maintained CSF arrest could be prepared (Lohka and Maller 1985). As a postdoc in Marc Kirschner's lab, Andrew Murray painstakingly optimized extract preparation, and succeeded in preparing synchronized extracts capable of multiple cell cycles in vitro, as well as CSF extracts that could be induced to enter interphase. He used these systems to show that cyclin B synthesis and degradation control MPF activity (Murray and Kirschner 1989; Murray et al. 1989; Murray 1991). Egg extracts were subsequently used to determine that cyclin B is degraded by the ubiquitin pathway (Glotzer et al. 1991), and to study downstream events including DNA replication (Blow and Laskey 1986), microtubule dynamics and spindle assembly (Belmont et al. 1990; Verde et al. 1990; Sawin and Mitchison 1991), and vesicle fusion (Tuomikoski et al. 1989). The protocols introduced here present the latest approaches that illustrate how the extract system can be used to examine a variety of cytoplasmic events (Fig. 2). Extract-based investigation of nuclear events is described elsewhere in this collection.

## PREPARING EXTRACTS AND PERFORMING CELL CYCLE AND BIOCHEMICAL ASSAYS

The key to preparing robust egg extracts is to prevent dilution of the cytoplasm by packing dejellied eggs using a low-speed centrifugation step, which is followed by a high-speed spin to crush the eggs and fractionate them so that the cytoplasm can be collected. Protocol: **Preparation of Cellular Extracts from *Xenopus* Eggs and Embryos** (Good and Heald 2018) describes the basic method to prepare CSF-arrested *X. laevis* extracts and is adapted for eggs from the smaller *Xenopus* species, *X. tropicalis*, as well as for preparation of metaphase-arrested embryo extracts. These approaches have facilitated the identification of factors that modulate spindle and nuclear size across species and during the reductive divisions of embryonic development (Levy and Heald 2010; Loughlin et al. 2011; Wilbur and Heald 2013). In Protocol: **Robustly Cycling *Xenopus laevis* Cell-Free Extracts in Teflon Chambers** (Chang and Ferrell 2018), spontaneously cycling extracts are prepared from eggs treated with a calcium ionophore to degrade CSF and induce progression through interphase and into the next cell cycle. Interestingly, the materials to which extracts are exposed strongly affects their activity. The robust Teflon tube system could be used to elucidate how MPF activation propagates through the egg extract



**FIGURE 2.** Schematic of the cytoplasmic processes reconstituted using the *Xenopus* in vitro systems described in the associated protocols.

in the form of a trigger wave (Chang and Ferrell 2013). Reconfinement of egg extract has emerged as a useful approach to evaluate the effects of compartment volume, shape, and boundary conditions on cellular processes under highly controlled conditions. In Protocol: **Microfluidic Encapsulation of Demembrated Sperm Nuclei in *Xenopus* Egg Extracts** (Oakey and Gatlin 2018), the authors describe how confinement technologies can be applied to generate synthetic cell-like systems, which have uniquely enabled evaluation of the impact of cytoplasmic volume on spindle size (Good et al. 2013; Hazel et al. 2013).

Importantly, the functional roles of the proteins involved in any process reconstituted in egg extracts can be determined by depleting a protein of interest using antibodies coupled to beads. Wild-type and mutant versions can be added back to verify function and test domain activities. Protocol: **Protein Immunodepletion and Complementation in *Xenopus laevis* Egg Extracts** (Jenness et al. 2018) describes how this complementation can be achieved by adding either recombinant proteins or mRNAs that are translated in the extract. This approach has been instrumental in defining the functions of cell cycle and other proteins and their regulatory mechanisms. For example, the amino-terminal 90 amino acids of cyclin B were shown to be required for its ubiquitylation and degradation, and sufficient to confer M-phase-specific degradation when fused to another protein (Glotzer et al. 1991). In Protocol: **Assessing Ubiquitylation of Individual Proteins Using *Xenopus* Extract Systems** (McDowell and Philpott 2018a) and Protocol: **Calculating the Degradation Rate of Individual Proteins Using *Xenopus* Extract Systems** (McDowell and Philpott 2018b), methods are presented that capitalize on the robust ability of the egg extract to induce protein degradation in order to quantitatively measure the ubiquitylation and half-life of exogenously added proteins. In addition to ubiquitylation, other posttranslational modifications, such as phosphorylation, have been characterized using *Xenopus* extract systems. Recent proteomic and phosphoproteomic analyses of *Xenopus* eggs and embryos provide an important resource for cell biologists using extract systems (Wühr et al. 2014, 2015; Peuchen et al. 2017; Presler et al. 2017).

## ASSEMBLING CELLULAR CYTOSKELETAL AND MEMBRANE STRUCTURES IN VITRO

The ability to control a switch-like transition between metaphase and interphase, and arrest in either state, has facilitated experiments assessing the effects of cell cycle state on the morphology and dynamics of subcellular structures. Protocol: **Assembly of Spindles and Asters in *Xenopus* Egg Extracts** (Field and Mitchison 2018) provides methods for examining the microtubule cytoskeleton in extracts and illustrates its similarity to structures formed in vivo, as well as the use of fluorescent cytoskeletal proteins. Spindle assembly and the role of motor proteins and other factors have been investigated extensively in egg extracts (e.g., Walczak et al. 1998), and many experiments now focus on elucidating the mechanisms underlying the subprocesses of microtubule organization and dynamics. Protocol: **Dissecting Protein Complexes in Branching Microtubule Nucleation Using Meiotic *Xenopus* Egg Extracts** (Song and Petry 2018) provides methods to assay a key step in spindle assembly using immunodepletion and total internal reflection fluorescence (TIRF) microscopy. This protocol describes how to examine the role of a particular protein complex and investigate its assembly by mass spectrometry analysis of immunoprecipitates. The actin cytoskeleton can also be examined in egg extracts. Prior to 2011, most egg extract preparations utilized cytochalasin to inhibit actin polymerization and prevent cytoplasmic gelation and contraction that complicated analysis by microscopy and biochemistry. Field et al. (2011) showed that bulk contraction driven by actomyosin was cell cycle regulated and specific to metaphase extract. Cytochalasin-free actin-intact egg extract has subsequently been used to investigate the physics of symmetry breaking by actin (Abu Shah and Keren 2014). Strikingly, when combined with lipid bilayers, actin-intact extract could reconstitute cytokinesis signaling from microtubules to the plasma membrane (Nguyen et al. 2014). Methods for preparation of actin-intact egg extracts are described elsewhere (Field et al. 2014, 2017). Protocol: **Filopodia-Like Structure Formation from *Xenopus* Egg Extracts** (Fox and Gallop 2018) describes the assembly of one type of actin architecture, and recapitulates an actin-membrane interaction in vitro. Finally, Protocol: **Endoplasmic Reticulum Network Formation with *Xenopus* Egg Extracts** (Wang et al. 2018) illustrates how endoplasmic reticulum (ER) morphology is affected by cell cycle state, and describes the fractionation and labeling of membranes that can be combined with cytosol to reconstitute the organelle. Egg extract-based assays were instrumental in identifying cellular components that define ER morphology (Dreier and Rapoport 2000; Voeltz et al. 2006; Hu et al. 2009; Wang et al. 2013).

Over the past several decades, *Xenopus* extracts have contributed to our knowledge in many areas of cell biology, and no other cytoplasmic in vitro system has simultaneously enabled both physiological reconstitution and biochemical approaches. To summarize the key features: (1) Extracts faithfully recapitulate complex cellular events in vitro; (2) The synchronized cell cycle state is preserved and can be controlled; (3) Extracts can easily be manipulated biochemically and observed by fluorescence microscopy; (4) Sufficient volumes can be obtained to perform a variety of assays.

## ACKNOWLEDGMENTS

We thank the members of the Heald Lab for continuous support. R.H. was supported by National Institutes of Health (NIH) R35 GM118183 and the Flora Lamson Hewlett Chair. R.G. was supported by a Human Frontier Science Program (HFSP) long-term fellowship, LT 0004252014-L, and by the “Fondation pour la Recherche Médicale,” ARF20170938684.

## REFERENCES

- Abu Shah E, Keren K. 2014. Symmetry breaking in reconstituted actin cortices. *Elife* 3: e01433.
- Belmont LD, Hyman AA, Sawin KE, Mitchison T. 1990. Real-time visualization of cell cycle-dependent changes in microtubule dynamics in cytoplasmic extracts. *Cell* 62: 579–589.
- Blow JJ, Laskey RA. 1986. Initiation of DNA replication in nuclei and purified DNA by a cell-free extract of *Xenopus* eggs. *Cell* 47: 577–587.
- Chang JB, Ferrell JE. 2013. Mitotic trigger waves and the spatial coordination of the *Xenopus* cell cycle. *Nature* 500: 603–607.
- Chang JB, Ferrell JE. 2018. Robustly cycling *Xenopus laevis* cell-free extracts in teflon chambers. *Cold Spring Harb Protoc* doi: 10.1101/pdb.prot097212.
- Dreier L, Rapoport TA. 2000. In vitro formation of the endoplasmic reticulum occurs independently of microtubules by a controlled fusion reaction. *J Cell Biol* 148: 883–898.



- Field CM, Mitchison TJ. 2018. Assembly of spindles and asters in *Xenopus* egg extracts. *Cold Spring Harb Protoc* doi: 10.1101/pdb.prot099796.
- Field CM, Wühr M, Anderson GA, Kueh HY, Strickland D, Mitchison TJ. 2011. Actin behavior in bulk cytoplasm is cell cycle regulated in early vertebrate embryos. *J Cell Sci* 124: 2086–2095.
- Field CM, Nguyen PA, Ishihara K, Groen AC, Mitchison TJ. 2014. *Xenopus* egg cytoplasm with intact actin. *Methods Enzymol* 540: 399–415.
- Field CM, Pelletier JF, Mitchison TJ. 2017. *Xenopus* extract approaches to studying microtubule organization and signaling in cytokinesis. *Methods Cell Biol* 137: 395–435.
- Fox HM, Gallop JL. 2018. Filopodia-like structure formation from *Xenopus* egg extracts. *Cold Spring Harb Protoc* doi: 10.1101/pdb.prot100545.
- Gerhart J, Wu M, Kirschner M. 1984. Cell cycle dynamics of an M-phase-specific cytoplasmic factor in *Xenopus laevis* oocytes and eggs. *J Cell Biol* 98: 1247–1255.
- Glotzer M, Murray AW, Kirschner MW. 1991. Cyclin is degraded by the ubiquitin pathway. *Nature* 349: 132–138.
- Good MC, Heald R. 2018. Preparation of cellular extracts from *Xenopus* eggs and embryos. *Cold Spring Harb Protoc* doi: 10.1101/pdb.prot097055.
- Good MC, Vahey MD, Skandarajah A, Fletcher DA, Heald R. 2013. Cytoplasmic volume modulates spindle size during embryogenesis. *Science* 342: 856–860.
- Hara K, Tydeman P, Kirschner M. 1980. A cytoplasmic clock with the same period as the division cycle in *Xenopus* eggs. *Cell Biol* 77: 462–466.
- Hazel J, Krutkramelis K, Mooney P, Tomschik M, Gerow K, Oakey J, Gatlin JC. 2013. Changes in cytoplasmic volume are sufficient to drive spindle scaling. *Science* 342: 853–856.
- Hu J, Shibata Y, Zhu P-P, Voss C, Rismanchi N, Prinz WA, Rapoport TA, Blackstone C. 2009. A class of dynamin-like GTPases involved in the generation of the tubular ER network. *Cell* 138: 549–561.
- Jeness C, Wynne DJ, Funabiki H. 2018. Protein immunodepletion and complementation in *Xenopus laevis* egg extracts. *Cold Spring Harb Protoc* doi: 10.1101/pdb.prot097113.
- Levy DL, Heald R. 2010. Nuclear size is regulated by importin  $\alpha$  and Ntf2 in *Xenopus*. *Cell* 143: 288–298.
- Lohka MJ, Maller JL. 1985. Induction of nuclear envelope breakdown, chromosome condensation, and spindle formation in cell-free extracts. *J Cell Biol* 101: 518–523.
- Lohka MJ, Masui Y. 1983. Formation in vitro of sperm pronuclei and mitotic chromosomes induced by amphibian ooplasmic components. *Science* 220: 719–721.
- Loughlin R, Wilbur JD, McNally FJ, Nédélec FJ, Heald R. 2011. Katanin contributes to interspecies spindle length scaling in *Xenopus*. *Cell* 147: 1397–1407.
- Maller JL, Gautier J, Langan TA, Lohka MJ, Shenoy S, Shalloway D, Nurse P. 1989. Maturation-promoting factor and the regulation of the cell cycle. *J Cell Sci Suppl* 12: 53–63.
- McDowell GS, Philpott A. 2018a. Assessing ubiquitylation of individual proteins using *Xenopus* extract systems. *Cold Spring Harb Protoc* doi: 10.1101/pdb.prot104513.
- McDowell GS, Philpott A. 2018b. Calculating the degradation rate of individual proteins using *Xenopus* extract systems. *Cold Spring Harb Protoc* doi: 10.1101/pdb.prot103481.
- Murray AW. 1991. Cell cycle extracts. *Methods Cell Biol* 36: 581–605.
- Murray AW, Kirschner M. 1989. Cyclin synthesis drives the early embryonic cell cycle. *Nature* 339: 275–280.
- Murray AW, Solomon MJ, Kirschner MW. 1989. The role of cyclin synthesis and degradation in the control of maturation promoting factor activity. *Nature* 339: 280–286.
- Nguyen PA, Groen AC, Loose M, Ishihara K, Wühr M, Field CM, Mitchison T. 2014. Spatial organization of cytokinesis signaling reconstituted in a cell-free system. *Science* 346: 244–247.
- Oakey J, Gatlin JC. 2018. Microfluidic encapsulation of demembrated sperm nuclei in *Xenopus* egg extracts. *Cold Spring Harb Protoc* doi: 10.1101/pdb.prot102913.
- Peuchen EH, Cox OF, Sun L, Hebert AS, Coon JJ, Champion MM, Dovichi NJ, Huber PW. 2017. Phosphorylation dynamics dominate the regulated proteome during early *Xenopus* development. *Sci Rep* 7: 15647.
- Presler M, Van Itallie E, Klein AM, Kunz R, Coughlin ML, Peshkin L, Gygi SP, Wühr M, Kirschner MW. 2017. Proteomics of phosphorylation and protein dynamics during fertilization and meiotic exit in the *Xenopus* egg. *Proc Natl Acad Sci* 114: E10838–E10847.
- Rauh NR, Schmidt A, Bormann J, Nigg EA, Mayer TU. 2005. Calcium triggers exit from meiosis II by targeting the APC/C inhibitor XErp1 for degradation. *Nature* 437: 1048–1052.
- Sawin KE, Mitchison T. 1991. Mitotic spindle assembly by two different pathways in vitro. *J Cell Biol* 112: 925–940.
- Schmidt A. 2006. Cytostatic factor: an activity that puts the cell cycle on hold. *J Cell Sci* 119: 1213–1218.
- Song J, Petry S. 2018. Dissecting protein complexes in branching microtubule nucleation using meiotic *Xenopus* egg extracts. *Cold Spring Harb Protoc* doi: 10.1101/pdb.prot100958.
- Tuomikoski T, Felix MA, Dorée M, Gruenberg J. 1989. Inhibition of endocytic vesicle fusion in vitro by the cell-cycle control protein kinase cdc2. *Nature* 342: 942–945.
- Verde F, Labbé JC, Dorée M, Karsenti E. 1990. Regulation of microtubule dynamics by cdc2 protein kinase in cell-free extracts of *Xenopus* eggs. *Nature* 343: 233–238.
- Voeltz GK, Prinz WA, Shibata Y, Rist JM, Rapoport TA. 2006. A class of membrane proteins shaping the tubular endoplasmic reticulum. *Cell* 124: 573–586.
- Walczak CE, Vernos I, Mitchison T, Karsenti E, Heald R. 1998. A model for the proposed roles of different microtubule-based motor proteins in establishing spindle bipolarity. *Curr Biol* 8: 903–913.
- Wang S, Romano FB, Field CM, Mitchison TJ, Rapoport TA. 2013. Multiple mechanisms determine ER network morphology during the cell cycle in *Xenopus* egg extracts. *J Cell Biol* 203: 801–814.
- Wang S, Romano FB, Rapoport TA. 2018. Endoplasmic reticulum network formation with *Xenopus* egg extracts. *Cold Spring Harb Protoc* doi: 10.1101/pdb.prot097204.
- Wilbur JD, Heald R. 2013. Mitotic spindle scaling during *Xenopus* development by kif2a and importin  $\alpha$ . *Elife* 2: e00290.
- Wühr M, Freeman RM, Presler M, Horb ME, Peshkin L, Gygi S, Kirschner MW. 2014. Deep proteomics of the *Xenopus laevis* egg using an mRNA-derived reference database. *Curr Biol* 24: 1467–1475.
- Wühr M, Güttler T, Peshkin L, McAlister GC, Sonnett M, Ishihara K, Groen AC, Presler M, Erickson BK, Mitchison TJ, et al. 2015. The nuclear proteome of a vertebrate. *Curr Biol* 25: 2663–2671.



# Cold Spring Harbor Protocols

## The Use of Cell-Free *Xenopus* Extracts to Investigate Cytoplasmic Events

Romain Gibeaux and Rebecca Heald

*Cold Spring Harb Protoc*; doi: 10.1101/pdb.top097048; published online July 6, 2018

---

### Email Alerting Service

Receive free email alerts when new articles cite this article - [click here](#).

---

### Subject Categories

Browse articles on similar topics from *Cold Spring Harbor Protocols*.

[Cell Biology, general](#) (1302 articles)  
[Developmental Biology](#) (661 articles)  
[Preparation of Cellular and Subcellular Extracts](#) (98 articles)  
[Subcellular Fractionation](#) (81 articles)  
[Xenopus](#) (128 articles)

---

---

To subscribe to *Cold Spring Harbor Protocols* go to:  
<http://cshprotocols.cshlp.org/subscriptions>

---