

UCLA

UCLA Previously Published Works

Title

Distinguishable Epidemics of Multidrug-Resistant Salmonella Typhimurium DT104 in Different Hosts

Permalink

<https://escholarship.org/uc/item/7bd497qz>

Journal

Science, 341(6153)

ISSN

0036-8075

Authors

Mather, AE
Reid, SWJ
Maskell, DJ
[et al.](#)

Publication Date

2013-09-27

DOI

10.1126/science.1240578

Peer reviewed

Published in final edited form as:

Science. 2013 September 27; 341(6153): 1514–1517. doi:10.1126/science.1240578.

Distinguishable Epidemics Within Different Hosts of the Multidrug Resistant Zoonotic Pathogen *Salmonella* Typhimurium DT104

A.E. Mather¹, S.W.J. Reid^{2,*}, D.J. Maskell³, J. Parkhill¹, M.C. Fookes¹, S.R. Harris¹, D.J. Brown⁴, J.E. Coia⁴, M.R. Mulvey⁵, M.W. Gilmour^{5,‡}, L. Petrovska⁶, E. de Pinna⁷, M. Kuroda⁸, M. Akiba⁹, H. Izumiya¹⁰, T.R. Connor^{1,†}, M.A. Suchard¹¹, P. Lemey¹², D.J. Mellor¹³, D.T. Haydon¹³, and N.R. Thomson^{1,*}

¹Wellcome Trust Sanger Institute, Wellcome Trust Genome Campus, Hinxton, UK

²Royal Veterinary College, North Mymms, Hatfield, UK

³Department of Veterinary Medicine, University of Cambridge, Cambridge, UK

⁴Scottish *Salmonella Shigella* and *Clostridium difficile* Reference Laboratory, Stobhill Hospital, Glasgow, UK

⁵National Microbiology Laboratory, Public Health Agency of Canada, Winnipeg, Canada

⁶Animal Health and Veterinary Laboratories Agency, Weybridge, UK

⁷Gastrointestinal Bacteria Reference Unit, Public Health England, Colindale, London, UK

⁸Pathogen Genomics Center, National Institute of Infectious Diseases, Tokyo, Japan

⁹Bacterial and Parasitic Disease Research Division, National Institute of Animal Health, Ibaraki, Japan

¹⁰Department of Bacteriology I, National Institute of Infectious Diseases, Tokyo, Japan

¹¹Departments of Biomathematics and Human Genetics, David Geffen School of Medicine at UCLA, and Department of Biostatistics, UCLA Fielding School of Public Health, University of California, Los Angeles, USA

¹²Department of Microbiology and Immunology, Rega Institute, KU Leuven, Leuven, Belgium

¹³Boyd Orr Centre for Population and Ecosystem Health, College of Medical, Veterinary and Life Sciences, University of Glasgow, Glasgow, UK

Abstract

The global epidemic of multidrug resistant *Salmonella* Typhimurium DT104 provides an important example, both in terms of the agent and its resistance, of a widely disseminated zoonotic pathogen. Here, with an unprecedented national collection of isolates collected contemporaneously from humans and animals, and including a sample of internationally derived

*Correspondence to: S.W.J. Reid, swjreid@rvc.ac.uk; N.R. Thomson, nrt@sanger.ac.uk.

†Current address: Cardiff School of Biosciences, Cardiff University, Cardiff, UK.

‡Current address: Diagnostic Services Manitoba, Winnipeg, Canada.

isolates, we have used whole genome sequencing to dissect the phylogenetic relationships of the bacterium and its antimicrobial resistance genes through the course of an epidemic. Contrary to current tenets supporting a single homogeneous epidemic, we demonstrate that the bacterium and its resistance genes were largely maintained within animal and human populations separately, and that there was limited transmission, in either direction. We also show considerable variation in the resistance profiles, in contrast to the largely stable bacterial core genome, further emphasizing the critical importance of integrated genotypic datasets in understanding the ecology of bacterial zoonoses and antimicrobial resistance.

S. enterica subspecies *enterica* is one of the most common bacterial pathogens of humans and other animals (1, 2). The global burden of disease caused by *Salmonella* infections is substantial, with over 90 million human cases of gastroenteritis alone occurring each year (3). The annual cost of these infections is estimated to be approximately €3 billion in the European Union (4), and approximately \$2.7 billion in the United States (5). The public health impact is exacerbated by antimicrobial resistance (AMR), which leads to increased morbidity, mortality, and treatment costs (6, 7). In our study, the inter-related epidemiologies of *Salmonella* and AMR were examined at the level of the genome. Our results challenge the established view that the human and animal epidemics are synonymous (8-11), and show that the phylogenetic relationships both within and between the resistance determinants and the host bacteria are different.

Throughout the 1990s, there was a global epidemic of multidrug resistant *S. Typhimurium* Definitive Type 104 (DT104) in animals and humans (12, 13). The DT104 epidemic was important because of its widespread prevalence and perceived zoonotic nature, and the high frequency of resistance to a wide range of commonly used antimicrobials, particularly ampicillin, chloramphenicol, streptomycin, sulphonamides and tetracycline. The primary source of human DT104 infections is thought to be the animal population, particularly local animals, through both direct contact and food-borne transmission (9, 10, 14). Using whole genome sequencing, we have studied the course of the epidemic in Scotland, a restricted geographical location that has a well-characterized collection of DT104 bacteria isolated from both humans and other animals over a 22-year period. By interrogating isolates collected from sympatric and contemporaneous hosts, and using isolates from geographically diverse hosts from other countries to put them in phylogenetic context, we have an unprecedented opportunity to profile the evolution and spread of a local epidemic of this globally important zoonotic pathogen.

In order to investigate the evolutionary changes that characterize the long-term epidemic, and to assess the roles of animals and humans in the spread of both the bacterium and AMR, we sequenced 142 isolates from humans and 120 isolates from other animals in Scotland sampled from 1990 – 2011. To set the Scottish isolates within a broader international context, 111 isolates were included from other locations around the world (Table S1). Sequence reads were mapped against our reference chromosome of DT104 and its virulence plasmid, and genomes were assembled *de novo* to identify unique regions (15). Maximum likelihood methods were used to produce a phylogenetic tree based on single nucleotide polymorphisms (SNPs) in the core genome (15). This identified a main clade of related

DT104 isolates (29 – 123 SNPs compared to the reference core genome) and a separate subset of 14 atypical isolates (620 – 709 SNPs compared to the reference core genome; Fig. S1). Within the main clade there were 2,765 variable sites across the 359 isolates, with pairwise differences between isolates ranging from 0 to 167 SNPs (Fig. 1). Most SNPs were sporadically distributed in the core genome throughout the phylogenetic tree, with relatively few genes showing non-synonymous SNPs in >5 isolates (Fig. S2). These data indicate that the rate of change within the core genome over the 22-year epidemic period, 3.4×10^{-7} substitutions/site/year (95% highest posterior density [HPD] interval: $3.1 \times 10^{-7} - 3.7 \times 10^{-7}$), is in line with that seen in other *S. Typhimurium* (16). Although confirmed phenotypically as DT104 by standard phage typing, the 14 atypical isolates are more similar genetically to the non-DT104 *S. Typhimurium* reference strain LT2, demonstrating the lack of resolution of traditional typing techniques. Isolates from all geographical locations can be found near the root of the tree, consistent with the rapid global spread of DT104 (12). However, many of these isolates, particularly those from England and Wales, can also be found interspersed with Scottish isolates throughout the rest of the tree. The most deeply rooted are primarily derived from humans, and do not have *Salmonella* Genomic Island 1 (SGI1), a 43kb genomic island with a 13kb multiple drug resistance region (17) that is characteristic of the epidemic strain.

To evaluate interspecies transmission and how DT104 circulated in Scotland, Bayesian phylogenetic diffusion models (18, 19) were used to reconstruct the host population of each branch of the phylogenetic tree (Fig. 2A), using the 135 human and 113 animal Scottish DT104 isolates. The most recent common ancestor of DT104 in Scotland is predicted to date to 1968 (95% HPD interval: 1962 – 1976), consistent with reports of antimicrobial-susceptible DT104 strains isolated from human cases of infection since the 1960s in England and Wales (13), with the first report of multidrug resistant DT104 in Scotland in the mid 1980s (13). What can be observed in Figs. 1 and 2A is that while there are isolates from a single host population that cluster together, isolates from animals and humans are also interspersed throughout the tree. However, quantification of the association between phylogeny and host population shows that the clustering is not fully randomized (15). Furthermore, similar to the maximum likelihood tree (Fig. 1), the most deeply rooted branches are estimated to be human (Fig. 2A) but it is difficult to infer with certainty the direction of transmission from these observations alone. Overall, the reconstructed host populations of the branches within the tree suggest that there were relatively few animal-to-human or human-to-animal transitions (Fig. 2B). Using Markov jumps to estimate the number of unobserved human-to-animal and animal-to-human transitions along each branch (15), we show the overall numbers of animal-to-human and human-to-animal transitions were similar, indicating that the majority of human infections in Scotland were unlikely to have been sourced from the local animal population. Markov rewards, from which inference may be made with respect to which populations might act as sources and which might act as sinks, showed that while the human isolates represented just 54% of the sample, 62% (666 years, 95% HPD: 545 – 771) of the total phylogenetic tree length was in the human state (15). Conversely, 38% (400 years, 95% HPD: 318 – 521) of the total tree length was spent in the animal state. Our conclusions are consistent when we perform these analyses on animal isolates by species, and with only cattle isolates, the main animal reservoir (15, 20).

These results support two novel hypotheses: 1) DT104 was predominantly circulating separately within each population in Scotland, with a low frequency of spill-over in both directions, and/or 2) that animals and humans were each sinks for a different and separate source of infection, also with a low level of spill-over. Scotland is a net importer of food (21); for example, by value, 58% of all red meat and 38% of raw beef are of non-Scottish origin (22). However, given a lack of surveillance data on food, attribution to this potential source cannot be quantified. Given the likely importance of imported food to the disease burden in humans, the greater global mobility of the human population and the recognition of this as a risk factor for bacterial infections (23, 24), we suggest that while these two hypotheses are not mutually exclusive, the second scenario is the more likely.

With respect to AMR, our results show that the ecological diversity of antimicrobial resistance, at the level of the genome, is greater in the isolates from the human population than in those from animals, and is not tightly coupled to the bacterial evolutionary history. Examining the distribution of the phenotypic AMR profiles throughout the molecular phylogenetic tree (Fig. S3) (15), allowed us to investigate the degree to which the evolutionary history of the organism is linked to that of the resistance determinants it carries, regardless of whether they are genes or SNPs known to confer resistance. We show that isolates demonstrating the same phenotypic resistance profile, even those putatively conferred by SGI1 (17) (Fig. S3A), do not cluster together exclusively.

The diversity of AMR was assessed further by interrogating the presence or absence of resistance determinants and profiles in the 147 Scottish isolates selected to cover the range of phenotypic resistance profiles observed in the epidemic period (Fig. 3) (15). A greater number of both resistance determinants and genotypic resistance profiles are found in the human isolates. As demonstrated by rarefaction analysis (Fig 3D), these results cannot be accounted for by differential sampling intensity. Multiple, independent recombination events in the multidrug resistance region occurred, as variants of SGI1 (25) are found throughout the tree (Fig. S4). Similarly, while there are some clades with a single AMR gene profile, in many instances profiles can be found in multiple clades and may be due to the gain or loss by horizontal gene transfer of accessory AMR determinants and their plasmid vectors (Tables S2-S5). Although the propensity for horizontal transmission is well recognized (26), these results provide both a unique insight into the genetic flux occurring across a defined 22 year epidemic and a baseline for the concomitant genetic flux in the DT104 core genome. In contrast to the relatively stable core genome with an expected substitution rate, the AMR features of these isolates varied appreciably throughout the time period.

Most transmission of DT104 has hitherto been considered to be from animals to humans (27-29), but this view has been based primarily on outbreak investigations. However, on the basis of whole genome sequence analysis, we provide a historical perspective on the epidemic that leads to a different inference. This is the largest study of its kind, utilizing tools with the finest resolution available to investigate the relationships of *Salmonella* Typhimurium DT104 and AMR between and within co-located human and animal populations, and enabled us to address two separate issues with this dataset, those of the origins and dissemination of AMR and also of *Salmonella*. First, the greater diversity of AMR genes and profiles in the human DT104 isolates suggests that there were other sources

contributing to the diversity of the human resistance burden than the local animals; it is noteworthy that this analysis of molecular data leads to identical conclusions to those based on phenotype (11). Second, we show that a large proportion of transmission of the bacterium appears to have occurred within each host population, and/or that there were separate sources of DT104 for the humans and local animals, with a small degree of spill-over in both directions. If the majority of human infections were obtained from locally produced food or direct contact with animals, the human isolates should be a subset of the animal isolates, but we do not observe this.

With humans having a more diverse source of infections than the local animal population, it is probable that imported food, foreign travel and environmental reservoirs are significant sources of *Salmonella* and AMR in humans in our study (23, 30), but surveillance data simply do not exist in any coherent form locally, nor consistently across the international community, to quantify the importance of these different sources. If we are to address this deficit, there is an urgent need to construct relevant, robust, and harmonized surveillance protocols to capture this information. Similarly, although the Scottish isolates are similar to those from other countries, this investigation needs to be conducted in other organisms and environments to determine the generality of our conclusions across different agricultural, political, and sociological conditions. This study challenges current views on the contribution of the local animal reservoir as a source of *Salmonella* and AMR in humans. It demonstrates the critical importance of acquiring targeted genotypic datasets integrated across the veterinary and public health sectors in order to understand the ecology of bacterial zoonoses, identify the sources of antimicrobial resistance, and formulate responsible evidence-based control strategies.

Supplementary Material

Refer to Web version on PubMed Central for supplementary material.

Acknowledgments

AEM was funded by the William Stewart Fellowship while at the University of Glasgow. AEM, SRH, MCF, TRC, JP and NRT are supported by Wellcome Trust grant 098051. PL and MAS acknowledge funding from the European Union Seventh Framework Programme [FP7/2007-2013] under ERC Grant agreement no. 260864. MAS is supported in part by National Institutes of Health R01 grants AI107034 and HG006139 and National Science Foundation grant DMS-1264153. The authors would like to thank James Cotton (Wellcome Trust Sanger Institute) for helpful discussions and assistance. Genome sequences are deposited with the European Nucleotide Archive (study accessions ERP000244, ERP000270, ERP000994) and DNA Data Bank of Japan (accession DRA000942). The finished chromosome and plasmid for *Salmonella* Typhimurium DT104 are submitted to the European Molecular Biology Laboratory, accessions HF937208 and HF937209, respectively.

References and Notes

1. Herikstad H, Motarjemi Y, Tauxe RV. *Salmonella* surveillance: a global survey of public health serotyping. *Epidemiol Infect.* 2002; 129:1. [PubMed: 12211575]
2. Wallis, TS.; Barrow, PA. *EcoSal - Escherichia coli and Salmonella: cellular and molecular biology.* Dougan, G., editor. ASM Press; Washington, DC: 2005.
3. Majowicz SE, et al. Food safety: The global burden of nontyphoidal *Salmonella* gastroenteritis. *Clin Infect Dis.* 2010; 50:882. [PubMed: 20158401]
4. EFSA. *Salmonella*. 2011. <http://www.efsa.europa.eu/de/topics/topic/salmonella.htm>

5. USDA. Foodborne Illness Cost Calculator. 2011. <http://www.ers.usda.gov/data/foodborneillness/>
6. Engemann JJ, et al. Adverse clinical and economic outcomes attributable to methicillin resistance among patients with *Staphylococcus aureus* surgical site infection. *Clin Infect Dis.* 2003; 36:592. [PubMed: 12594640]
7. Davies, SC. Annual Report of the Chief Medical Officer; Volume Two, 2011: Infections and the rise of antimicrobial resistance. Department of Health; London: 2013.
8. Glynn MK, et al. Emergence of multidrug-resistant *Salmonella enterica* serotype Typhimurium DT104 infections in the United States. *N Engl J Med.* 1998; 338:1333. [PubMed: 9571252]
9. Wall PG, et al. Transmission of multi-resistant strains of *Salmonella* Typhimurium from cattle to man. *Vet Rec.* 1995; 136:591. [PubMed: 7571253]
10. Dechet AM, et al. Outbreak of multidrug-resistant *Salmonella enterica* serotype Typhimurium Definitive Type 104 infection linked to commercial ground beef, Northeastern United States, 2003-2004. *Clin Infect Dis.* 2006; 42:747. [PubMed: 16477547]
11. Mather AE, et al. An ecological approach to assessing the epidemiology of antimicrobial resistance in animal and human populations. *Proc R Soc B.* 2012; 279:1630.
12. Helms M, Ethelberg S, Mølbak K. International *Salmonella* Typhimurium DT104 infections, 1992-2001. *Emerg Infect Dis.* 2005; 11:859. [PubMed: 15963280]
13. Threlfall EJ. Epidemic *Salmonella* Typhimurium DT104 - a truly international multiresistant clone. *J Antimicrob Chemother.* 2000; 46:7. [PubMed: 10882682]
14. Besser TE, et al. Multiresistant *Salmonella* Typhimurium DT104 infections of humans and domestic animals in the Pacific Northwest of the United States. *Epidemiol Infect.* 2000; 124:193. [PubMed: 10813142]
15. Materials and methods are available as supplementary materials on *Science* online.
16. Okoro CK, et al. Intracontinental spread of human invasive *Salmonella* Typhimurium pathovariants in sub-Saharan Africa. *Nat Genet.* 2012; 44:1215. [PubMed: 23023330]
17. Boyd D, et al. Complete nucleotide sequence of a 43-kilobase genomic island associated with the multidrug resistance region of *Salmonella enterica* serovar Typhimurium DT104 and its identification in phage type DT120 and serovar Agona. *J Bacteriol.* 2001; 183:5725. [PubMed: 11544236]
18. Drummond AJ, Suchard MA, Xie D, Rambaut A. Bayesian Phylogenetics with BEAUti and the BEAST 1.7. *Mol Biol Evol.* 2012; 29:1969. [PubMed: 22367748]
19. Lemey P, Rambaut A, Drummond AJ, Suchard MA. Bayesian phylogeography finds its roots. *PLoS Comput Biol.* 2009; 5:e1000520. [PubMed: 19779555]
20. Calvert N, Stewart WC, Reilly WJ. *Salmonella* Typhimurium DT104 infection in people and animals in Scotland: a collaborative epidemiological study 1993-96. *Vet Rec.* 1998; 143:351. [PubMed: 9800300]
21. Food and drink in Scotland: Key facts. Scottish Government; Edinburgh: 2012. <http://www.scotland.gov.uk/Resource/0038/00389160.pdf>
22. Revoredo-Giha, C., et al. Analysis of red and processed meat purchases in Scotland using representative supermarket panel data. Food Standards Agency; 2009. http://www.foodbase.org.uk/admintools/reportdocuments/338-1-594_S14046.pdf
23. Davis MA, Hancock DD, Besser TE. Multiresistant clones of *Salmonella enterica*: The importance of dissemination. *J Lab Clin Med.* 2002; 140:135. [PubMed: 12271270]
24. Skjøt-Rasmussen L, et al. Trends in occurrence of antimicrobial resistance in *Campylobacter jejuni* isolates from broiler chickens, broiler chicken meat, and human domestically acquired cases and travel associated cases in Denmark. *Int J Food Microbiol.* 2009; 131:277. [PubMed: 19345436]
25. Mulvey MR, Boyd DA, Olson AB, Doublet B, Cloeckert A. The genetics of *Salmonella* genomic island 1. *Microbes Infect.* 2006; 8:1915. [PubMed: 16713724]
26. Summers AO. Genetic linkage and horizontal gene transfer, the roots of the antibiotic multi-resistance problem. *Anim Biotechnol.* 2006; 17:125. [PubMed: 17127524]
27. Mølbak K, et al. An outbreak of multidrug-resistant, quinolone-resistant *Salmonella enterica* serotype Typhimurium DT104. *N Engl J Med.* 1999; 341:1420. [PubMed: 10547404]

28. Fone DL, Barker RM. Associations between human and farm animal infections with *Salmonella* Typhimurium DT104 in Herefordshire. *Commun Dis Rep CDR Rev.* 1994; 4:R136. [PubMed: 7787923]
29. Angulo FJ, Johnson KR, Tauxe RV, Cohen ML. Origins and consequences of antimicrobial-resistant nontyphoidal *Salmonella*: implications for the use of fluoroquinolones in food animals. *Microb Drug Resist.* 2000; 6:77. [PubMed: 10868811]
30. Zhao S, et al. Characterization of antimicrobial-resistant *Salmonella* isolated from imported foods. *J Food Prot.* 2006; 69:500. [PubMed: 16541678]
31. Evans S, Davies R. Case control study of multiple-resistant *Salmonella* Typhimurium DT104 infection of cattle in Great Britain. *Vet Rec.* 1996; 139:557. [PubMed: 8972066]
32. Parkhill J, et al. Complete genome sequence of a multiple drug resistant *Salmonella enterica* serovar Typhi CT18. *Nature.* 2001; 413:848. [PubMed: 11677608]
33. Le Minor, L. *Bergey's Manual of Systematic Bacteriology Volume 1.* Krieg, NR.; Holt, JG., editors. Williams and Wilkins; Baltimore, London: 1984. p. 427-458.
34. Callow BR. A new phage typing scheme for *Salmonella* typhimurium. *J Hyg.* 1959; 57:346. [PubMed: 13807011]
35. Ward LR, de Sa JDH, Rowe B. A phage typing scheme for *Salmonella* Enteritidis. *Epidemiol Infect.* 1987; 99:291. [PubMed: 3315705]
36. Browning LM, Brown DJ, Coia JE, Cowden JM, Mather H. Antimicrobial resistance of *Salmonella* in Scotland, 2005 (excluding *S. Typhi* and *S. Paratyphi*). *HPS Weekly Report.* 2007; 41:172.
37. CLSI. Performance standards for antimicrobial disk susceptibility tests; Approved standard eleventh edition. CLSI document M02-A10. Clinical and Laboratory Standards Institute; Wayne, PA: 2011.
38. CLSI. Performance standards for antimicrobial susceptibility testing: 21st information supplement M100-S21. Clinical and Laboratory Standards Institute; Wayne, PA: 2011.
39. CIPARS. Canadian Integrated Program for Antimicrobial Resistance Surveillance. 2007. <http://www.phac-aspc.gc.ca/cipars-picra/index-eng.php>
40. Mulvey MR, et al. Ciprofloxacin-resistant *Salmonella enterica* serovar Kentucky in Canada. *Emerg Infect Dis.* 2013; 19:999. [PubMed: 23735312]
41. CLSI. Performance standards for antimicrobial susceptibility testing: Eighteenth informational supplement. CLSI document M100-S18. Clinical and Laboratory Standards Institute; Wayne, PA: 2008.
42. AHVLA. *Salmonella* in livestock production in GB: 2011 report. Chapter 12: Antimicrobial sensitivity in *Salmonella*. Animal Health and Veterinary Laboratories Agency; 2011. <http://www.defra.gov.uk/ahvla-en/files/pub-salm11-chp12.pdf>
43. Frost, JA. *Methods in practical laboratory bacteriology.* Chart, H., editor. CRC Press; New York: 1994. p. 73-82.
44. WTSI. SMALT: Pairwise sequence alignment program. Wellcome Trust Sanger Institute; <http://www.sanger.ac.uk/resources/software/smalt/>
45. Cooke FJ, et al. Prophage sequences defining hot spots of genome variation in *Salmonella enterica* serovar Typhimurium can be used to discriminate between field isolates. *J Clin Microbiol.* 2007; 45:2590. [PubMed: 17522270]
46. Cooke FJ, et al. Characterization of the genomes of a diverse collection of *Salmonella enterica* serovar Typhimurium Definitive Phage Type 104. *J Bacteriol.* 2008; 190:8155. [PubMed: 18849424]
47. Harris SR, et al. Evolution of MRSA during hospital transmission and intercontinental spread. *Science.* 2010; 327:469. [PubMed: 20093474]
48. Croucher NJ, et al. Rapid pneumococcal evolution in response to clinical interventions. *Science.* 2011; 331:430. [PubMed: 21273480]
49. Stamatakis A. RAXML-VI-HPC: maximum likelihood-based phylogenetic analyses with thousands of taxa and mixed models. *Bioinformatics.* 2006; 22:2688. [PubMed: 16928733]
50. Letunic I, Bork P. Interactive Tree Of Life (iTOL): an online tool for phylogenetic tree display and annotation. *Bioinformatics.* 2007; 23:127. [PubMed: 17050570]

51. Letunic I, Bork P. Interactive Tree Of Life v2: online annotation and display of phylogenetic trees made easy. *Nucleic Acids Res.* 2011; 39:W475. [PubMed: 21470960]
52. Drummond AJ, Ho SY, Phillips MJ, Rambaut A. Relaxed phylogenetics and dating with confidence. *PLoS Biol.* 2006; 4:e88. [PubMed: 16683862]
53. Griffiths RC, Tavaré S. Sampling theory for neutral alleles in a varying environment. *Phil Trans R Soc B.* 1994; 344:403. [PubMed: 7800710]
54. Drummond AJ, Nicholls GK, Rodrigo AG, Solomon W. Estimating mutation parameters, population history and genealogy simultaneously from temporally spaced sequence data. *Genetics.* 2002; 161:1307. [PubMed: 12136032]
55. Zerbino DR, Birney E. Velvet: algorithms for *de novo* short read assembly using de Bruijn graphs. *Genome Res.* 2008; 18:821. [PubMed: 18349386]
56. Boyd D, Cloeckeaert A, Chaslus-Dancla E, Mulvey MR. Characterization of variant *Salmonella* genomic island 1 multidrug resistance regions from serovars Typhimurium DT104 and Agona. *Antimicrob Agents Chemother.* 2002; 46:1714. [PubMed: 12019080]
57. Vo ATT, van Duijkeren E, Fluit AC, Gaastra W. A novel *Salmonella* genomic island 1 and rare integron types in *Salmonella* Typhimurium isolates from horses in The Netherlands. *J Antimicrob Chemother.* 2007; 59:594. [PubMed: 17293368]
58. Targant H, Doublet B, Aarestrup FM, Cloeckeaert A, Madec J-Y. IS6100-mediated genetic rearrangement within the complex class 1 integron In104 of the *Salmonella* genomic island 1. *J Antimicrob Chemother.* 2010; 65:1543. [PubMed: 20483981]
59. Michael GB, Butaye P, Cloeckeaert A, Schwarz S. Genes and mutations conferring antimicrobial resistance in *Salmonella*: an update. *Microbes Infect.* 2006; 8:1898. [PubMed: 16716631]
60. Moura A, et al. INTEGRALL: a database and search engine for integrons, integrases and gene cassettes. *Bioinformatics.* 2009; 25:1096. [PubMed: 19228805]
61. Chen, H. VennDiagram: Generate high-resolution Venn and Euler plots. 1.6.0. R Foundation for Statistical Computing; 2013.
62. R: A language and environment for statistical computing. 3.0.0. R Foundation for Statistical Computing; 2013.
63. Oksanen, J., et al. vegan: Community Ecology Package. 2.0-7. R Foundation for Statistical Computing; 2013.
64. Baele G, et al. Improving the accuracy of demographic and molecular clock model comparison while accommodating phylogenetic uncertainty. *Mol Biol Evol.* 2012; 29:2157. [PubMed: 22403239]
65. Ferreira MAR, Suchard MA. Bayesian analysis of elapsed times in continuous-time Markov chains. *Can J Stats.* 2008; 36:355.
66. Minin VN, Suchard MA. Counting labeled transitions in continuous-time Markov models of evolution. *J Math Biol.* 2008; 56:391. [PubMed: 17874105]
67. Minin VN, Suchard MA. Fast, accurate and simulation-free stochastic mapping. *Phil Trans R Soc B.* 2008; 363:3985. [PubMed: 18852111]
68. Pagel M, Meade A, Barker D. Bayesian estimation of ancestral character states on phylogenies. *Syst Biol.* 2004; 53:673. [PubMed: 15545248]
69. Ayres DL, et al. BEAGLE: an application programming interface and high-performance computing library for statistical phylogenetics. *Syst Biol.* 2012; 61:170. [PubMed: 21963610]
70. Wang TH, Donaldson YK, Brettell RP, Bell JE, Simmonds P. Identification of shared populations of human immunodeficiency virus type I infecting microglia and tissue macrophages outside the central nervous system. *J Virol.* 2001; 75:11686. [PubMed: 11689650]

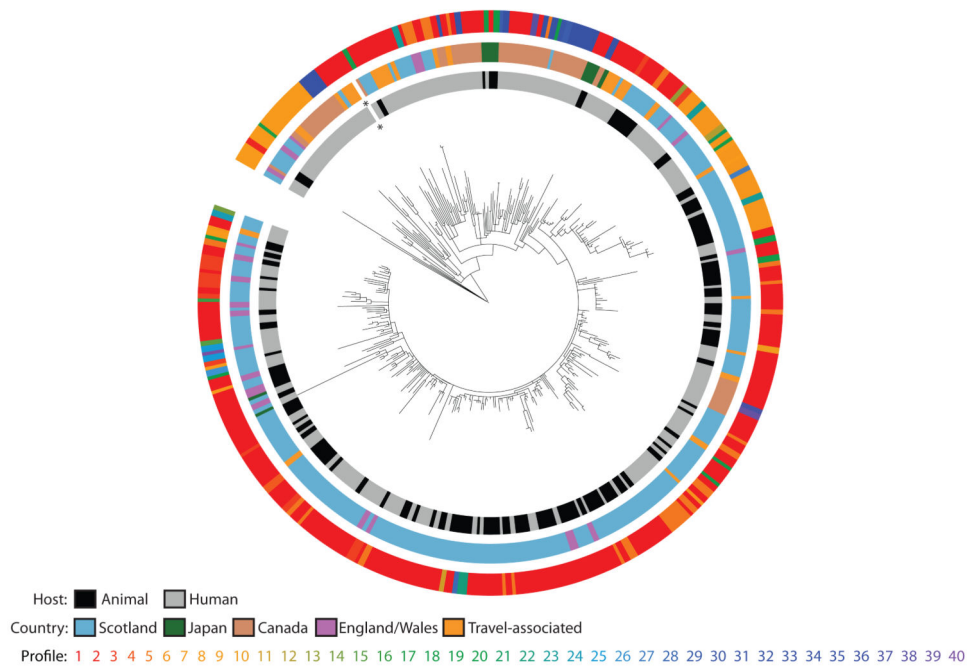


Fig. 1. Phylogeny of Scottish and global *Salmonella* Typhimurium DT104, rooted on *S. Typhimurium* SL1344. Colored rings indicate, from the center out, the host and country of origin, and the unique genotypic antimicrobial resistance profiles of each isolate (Table S6); the asterisk indicates the location of the reference isolate HF937208. The same tree with bootstrap values added is shown in Fig. S5.

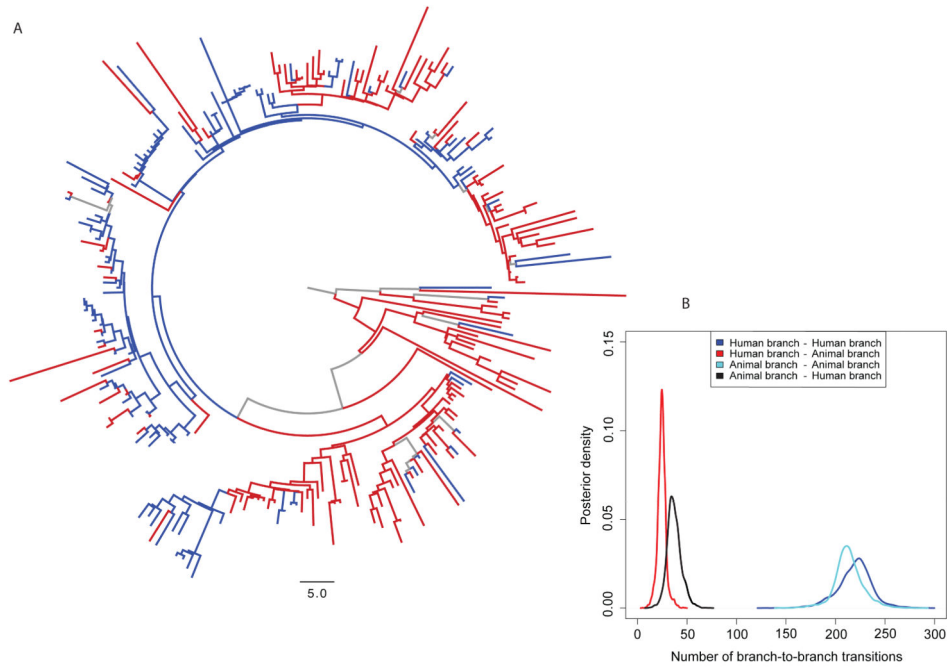


Fig. 2. Bayesian maximum clade credibility phylogenetic tree and most probable ancestral state reconstruction of host population for *Salmonella Typhimurium* DT104 in Scotland.

A) Branches with a reconstructed state (host population) posterior probability > 0.75 are colored red for human, blue for animal; branches with a state probability < 0.75 are colored grey. The same tree is shown in Fig. S6, with branch width scaled by the posterior probabilities. B) Posterior density plot of the numbers of human branches ancestral to human branches, human branches ancestral to animal branches, animal branches ancestral to human branches, and animal branches ancestral to animal branches integrated over the subsample of 3,600 phylogenetic trees with reconstructed host population states along branches obtained using BEAST. These results suggest 1) circulation of DT104 predominantly within animals and humans separately, with only a low frequency of spill-over in both directions, and/or or 2) animals and humans were each sinks for different and separate sources of infection, with only a low frequency of spill-over in both directions.

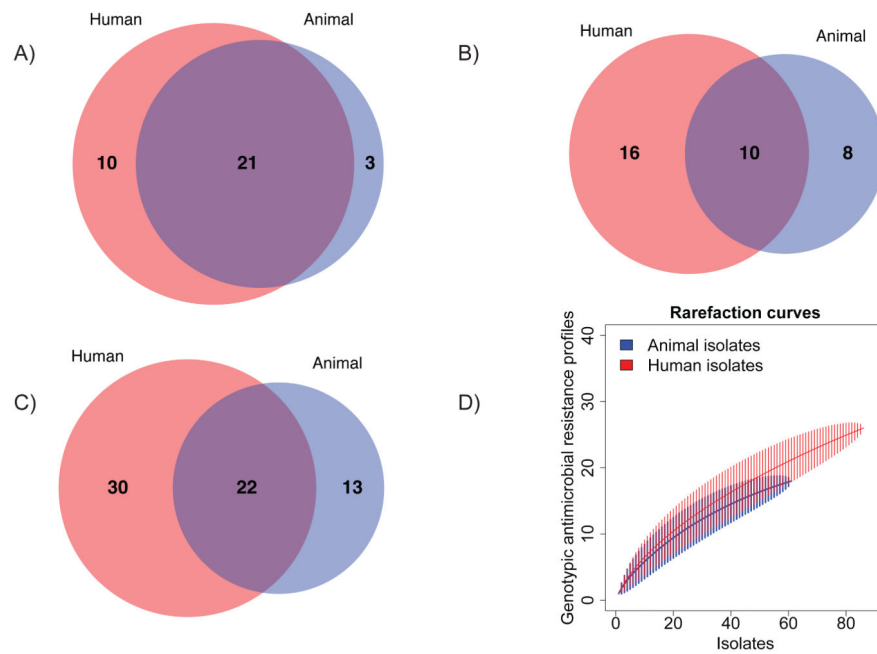


Fig. 3. Venn diagrams demonstrating the degree of overlap in antimicrobial resistance (AMR) between the human and animal populations of *S. Typhimurium* DT104.

A) The numbers of shared and unique AMR determinants (acquired resistance genes or single nucleotide polymorphisms known to confer resistance) in the 147 Scottish human and animal DT104 isolates investigated for AMR diversity; B) The numbers of shared and unique AMR profiles (unique combinations of AMR determinants) in the 147 isolates; C) The numbers of shared and unique AMR phenotypic profiles (unique combinations of AMR phenotypes) in the original 5,200 surveillance isolates of DT104, 1990-2004, Scotland (11); D) Rarefaction curves, with 95% confidence intervals (vertical lines), of the number of genotypic AMR profiles in the 147 isolates investigated for AMR diversity, demonstrating similar sampling intensity.