

# UCSF

## UC San Francisco Previously Published Works

### Title

Real-World Use of Tisagenlecleucel in Infant Acute Lymphoblastic Leukemia

### Permalink

<https://escholarship.org/uc/item/7bx8v22b>

### Journal

Blood Advances, 6(14)

### ISSN

2473-9529

### Authors

Moskop, Amy  
Pommert, Lauren  
Baggott, Christina  
[et al.](#)

### Publication Date

2022-07-26

### DOI

10.1182/bloodadvances.2021006393

Peer reviewed

## Real-world use of tisagenlecleucel in infant acute lymphoblastic leukemia

Amy Moskop,<sup>1,\*</sup> Lauren Pommert,<sup>2,3,\*</sup> Christina Baggott,<sup>4</sup> Snehit Prabhu,<sup>5</sup> Holly L. Pacenta,<sup>6</sup> Christine L. Phillips,<sup>2,3</sup> Jenna Rossoff,<sup>7</sup> Heather E. Stefanski,<sup>8</sup> Julie-An Talano,<sup>1</sup> Steve P. Margossian,<sup>9</sup> Michael R. Verneris,<sup>10</sup> G. Doug Myers,<sup>11</sup> Nicole A. Karras,<sup>12</sup> Patrick A. Brown,<sup>13</sup> Muna Qayed,<sup>14</sup> Michelle L. Hermiston,<sup>15</sup> Prakash Satwani,<sup>16</sup> Christa Krupski,<sup>2,3</sup> Amy K. Keating,<sup>10</sup> Rachel Wilcox,<sup>11</sup> Cara A. Rabik,<sup>17</sup> Vanessa A. Fabrizio,<sup>10</sup> Vasant Chinnabhandar,<sup>18</sup> A. Yasemin Goksenin,<sup>15</sup> Kevin J. Curran,<sup>19,20</sup> Crystal L. Mackall,<sup>21</sup> Theodore W. Laetsch,<sup>22,23</sup> Erin M. Guest,<sup>11,†</sup> Erin H. Breese,<sup>2,3,†</sup> and Liora M. Schultz<sup>24,†</sup>

<sup>1</sup>Division of Hematology/Oncology/Blood and Marrow Transplantation, Department of Pediatrics, Medical College of Wisconsin, Children's Wisconsin, Milwaukee, WI; <sup>2</sup>Department of Pediatrics, University of Cincinnati College of Medicine, Cincinnati OH; <sup>3</sup>Cancer and Blood Diseases Institute, Cincinnati Children's Hospital Medical Center, Cincinnati OH; <sup>4</sup>Stanford University School of Medicine, Stanford, CA; <sup>5</sup>Stanford Cancer Institute, Stanford University School of Medicine, Stanford, CA; <sup>6</sup>Division of Hematology and Oncology, Cook Children's Medical Center, Fort Worth, TX; <sup>7</sup>Division of Hematology, Oncology and Transplantation, Ann & Robert H. Lurie Children's Hospital of Chicago, Chicago, IL; <sup>8</sup>Be the Match/National Marrow Donor Program, Minneapolis, MN; <sup>9</sup>Pediatric Hematology-Oncology, Dana-Farber/Boston Children's Cancer and Blood Disorders Center, Harvard University, Boston, MA; <sup>10</sup>University of Colorado, Anschutz Medical Campus, Colorado Children's Hospital, Aurora, CO; <sup>11</sup>Division of Hematology/Oncology/Blood and Marrow Transplant, Children's Mercy Hospital, Kansas City, MO; <sup>12</sup>Department of Pediatrics, City of Hope National Medical Center, Duarte, CA; <sup>13</sup>Department of Oncology and Department of Pediatrics, Sidney Kimmel Cancer Center at Johns Hopkins, School of Medicine, Johns Hopkins University, Baltimore, MD; <sup>14</sup>Department of Pediatrics, Emory University and Children's Healthcare of Atlanta, Atlanta, GA; <sup>15</sup>Department of Pediatrics, Benioff Children's Hospital, University of California, San Francisco, San Francisco, CA; <sup>16</sup>Division of Pediatric Hematology, Oncology and Stem Cell Transplant, Department of Pediatrics, Columbia University Medical Center, New York, NY; <sup>17</sup>Division of Hematologic Malignancies I, Center for Drug Evaluation and Research, US Food and Drug Administration, Silver Spring, MD; <sup>18</sup>Division of Pediatric Blood and Marrow Transplantation, Department of Pediatrics, University of Minnesota Medical School, Minneapolis, MN; <sup>19</sup>Department of Pediatrics, Memorial Sloan-Kettering Cancer Center, New York, NY; <sup>20</sup>Department of Pediatrics, Weill Cornell Medical College, New York, NY; <sup>21</sup>Division of Hematology and Oncology, Department of Pediatrics, Division of Stem Cell Transplantation and Cell Therapy, Department of Medicine, Center for Cancer Cell Therapy, Stanford Cancer Institute, Stanford University School of Medicine, Stanford, CA; <sup>22</sup>Department of Pediatrics and Abramson Cancer Center, Perelman School of Medicine, University of Pennsylvania; Philadelphia, PA; <sup>23</sup>Division of Oncology, Center for Childhood Cancer Research, Children's Hospital of Philadelphia, Philadelphia, PA; and <sup>24</sup>Division of Hematology and Oncology, Department of Pediatrics, Stanford University School of Medicine, Stanford, CA

### Key Point

- Real-world use of tisagenlecleucel in infant B-ALL shows that this novel therapy can be effective and safe in a highly aggressive leukemia.

Infants with B-cell acute lymphoblastic leukemia (B-ALL) have poor outcomes because of chemotherapy resistance leading to high relapse rates. Tisagenlecleucel, a CD19-directed chimeric antigen receptor T-cell (CAR) therapy, is US Food and Drug Administration approved for relapsed or refractory B-ALL in patients  $\leq 25$  years; however, the safety and efficacy of this therapy in young patients is largely unknown because children  $< 3$  years of age were excluded from licensing studies. We retrospectively evaluated data from the Pediatric Real-World CAR Consortium to examine outcomes of patients with infant B-ALL who received tisagenlecleucel between 2017 and 2020 ( $n = 14$ ). Sixty-four percent of patients ( $n = 9$ ) achieved minimal residual disease-negative remission after CAR and 50% of patients remain in remission at last follow-up. All patients with high disease burden at time of CAR infusion ( $> M1$  marrow) were refractory to this therapy ( $n = 5$ ). Overall, tisagenlecleucel was tolerable in this population, with only 3 patients experiencing  $\geq$  grade 3 cytokine release syndrome. No neurotoxicity was reported. This is the largest report of tisagenlecleucel use in infant B-ALL and shows that this therapy is safe and can be effective in this population. Incorporating this novel immunotherapy into the treatment of infant B-ALL offers a promising therapy for a highly aggressive leukemia.

Submitted 18 October 2021; accepted 30 April 2022; prepublished online on *Blood Advances* First Edition 17 May 2022; final version published online 21 July 2022. DOI 10.1182/bloodadvances.2021006393.

\*A.M. and L.P. are joint first authors.

†E.M.G., E.H.B., and L.M.S. are joint senior authors.

Requests for data sharing may be submitted to the corresponding author (e-mail: amoskop@mcw.edu).

Licensed under Creative Commons Attribution-NonCommercial-NoDerivatives 4.0 International (CC BY-NC-ND 4.0), permitting only noncommercial, nonderivative use with attribution. All other rights reserved.

## Introduction

Infant B-cell acute lymphoblastic leukemia (B-ALL) is an aggressive form of ALL diagnosed in patients younger than 12 months of age. Most have *KMT2A* gene rearrangement (*KMT2Ar*), which is a high-risk feature associated with chemotherapy resistance and relapse.<sup>1</sup> Despite intensive chemotherapy regimens, estimated 5-year event-free survival (EFS) for infants with *KMT2Ar* B-ALL is <40% and overall survival (OS) after relapse remains dismal at 20%.<sup>2-6</sup> Novel therapies such as chimeric antigen receptor T (CART) cells are needed. The apheresis and manufacturing of CART in infants with B-ALL can be challenging because of small patient size, high leukemia burden, and heavily pretreated disease resulting in impaired T-cell function and expansion.<sup>7,8</sup>

Tisagenlecleucel (KYMRIAH, Novartis), a CD19-directed CART, was US Food and Drug Administration approved in August 2017 for treatment of relapsed/refractory (R/R) B-ALL and is commercially available to patients up to age 25 years.<sup>9-12</sup> The ELIANA trial excluded patients younger than age 3 years; therefore, the published CART experience in infant B-ALL is limited.<sup>7,13-15</sup> Because of poor outcomes with chemotherapy and a US Food and Drug Administration indication including infants, experience is accumulating treating R/R infant B-ALL with tisagenlecleucel. We describe the real-world experience of R/R infant B-ALL treated with tisagenlecleucel using data from the Pediatric Real-World CAR Consortium (PRWCC).

## Methods

The PRWCC, a multi-institutional consortium, has collected retrospective data on pediatric and young adult patients with B-ALL who received commercial tisagenlecleucel from August 2017 through March 6, 2020. Retrospective data were abstracted from the PRWCC database of patients with infant ALL, defined as <12 months of age at the time of original diagnosis. The primary outcome for this study was 1-month complete remission (CR) rate. Responders were defined as having minimal residual disease (MRD)-negative (<0.01%) CR by flow cytometry at day 28 after infusion. Additional outcomes included 6-month OS and EFS, toxicities including cytokine release syndrome (CRS) and neurotoxicity, and rationale for noninfusion. CRS was retrospectively graded according to American Society for Transplantation and Cellular Therapy guidelines, and neurotoxicity was graded per the American Society for Transplantation and Cellular Therapy, CART Related Encephalopathy Syndrome, or institutional standard.<sup>16,17</sup> Each center obtained independent institutional review board approval. The study was conducted in accordance with the Declaration of Helsinki.

## Results and discussion

### Patient characteristics

Of 16 patients with infant B-ALL within the PRWCC database, 14 underwent infusion with tisagenlecleucel. Two patients with primary refractory disease were not infused: 1 because manufacturing failure and the other because of progression of leukemia and death. Table 1 includes baseline characteristics and response to therapy for infused patients.

Of 14 infused patients, the majority (86%) had *KMT2Ar*. Of the 2 remaining patients, 1 had normal (*KMT2A*-germline) and 1 had unknown cytogenetics. Four patients (29%) had prior hematopoietic

**Table 1. Baseline characteristics and CART details**

	All patients n = 14	Responders* n = 9	Nonresponders n = 5
Age at CART, median (range), y	0 (0-9)	2 (0-9)	1 (0-2)
<b><i>KMT2Ar</i> status</b>			
Yes	12	8	4
No	1	0	1
Unknown	1	1	0
<b>Frontline therapy EOI response</b>			
MRD-negative CR	5	3	2
MRD-positive CR	7	5	2
>M1	1	1	0
Not assessed	1	0	1
<b>Prior immunotherapy and HSCT</b>			
Blinatumomab	3	3	0
Inotuzumab	3	1	2
HSCT	4	2	2
<b>Disease category before CART</b>			
Primary refractory	5	4	1
First relapse†	5	2	3
Second or greater relapse	4	3	1
<b>MRD status before CAR</b>			
MRD-negative CR	3	3	0
MRD-positive CR	6	6	0
>M1	5	0	5
ALC at time of T-cell collection, median (range), cells/ $\mu$ L	1610 (240-3330)	1564 (240-5120)	1692 (300-3330)
CART cell dose infused, median (range), ( $\times 10^9$ CAR T cells/kg)	2.29 (1.3-4.6)	2.65 (1.6-4.6)	1.72 (1.3-2.4)
<b>CRS</b>			
Any grade	11	6	5
$\geq$ Grade 3	3	1	2
<b>HSCT while in CART-mediated remission‡</b>			
Yes	1	1	0
No	13	8	5
<b>Disease status after CART</b>			
Refractory to CART	4	0	4
Remains in CR after CART	7	7	0
Relapsed after CART	3§	2	1
<b>Myeloid transformation</b>			
Yes	4	1	3
No	3	1	2
Death	4	0	4
Time after CART at last follow-up, median (range), d	231 (44-856)	290 (137-856)	85 (44-389)

ALC, absolute lymphocyte count; EOI, end of induction.

\*Defined as MRD-negative CR at day 28 after CART.

†First relapse: patients with first relapse that was refractory to salvage therapy (n = 3), patients with first relapse after HSCT (n = 2).

‡The indication for the patient who received HSCT while in CART-mediated remission included preemptive per discretion of treating physician.

§All retained CD19<sup>+</sup> status, extramedullary (skin, n = 1), marrow only (n = 1), marrow and central nervous system (n = 1).

stem cell transplant (HSCT). Three patients (21%) had prior blinatumomab and 3 patients (21%) had prior inotuzumab. Indications for CART included primary refractory (n = 5), first relapse (n = 5), and second or greater relapse (n = 4). Before CART infusion, 5 patients (36%) had >M1 marrow (>5% blasts; range, 6%-90% blasts) and 9 patients (64%) were in morphologic CR, including 3 patients in MRD-negative CR. Before infusion, 9 patients were CNS1, 2 were CNS2, and 3 were not assessed. No patients had other active extramedullary disease at time of CART infusion. The median time from apheresis to infusion was 6 weeks (range, 5-15 weeks). All patients received lymphodepleting chemotherapy (fludarabine/cyclophosphamide) before infusion. Median CART dose was  $2.2 \times 10^6$  cells/kg (range,  $1.3\text{-}4.6 \times 10^6$  cells/kg).

### Responders vs nonresponders

Nine patients (64%) achieved an MRD-negative CR at day 28 after CART infusion. Five patients (36%) failed to achieve MRD negativity (nonresponders), 1 of whom was in morphologic CR (flow MRD not assessed) and 4 of whom failed to achieve morphologic CR ( $\geq 5\%$  disease). The median duration of follow-up was 231 days (range, 44-856 days).

Disease status before CART infusion affected outcomes for this population. All 5 patients with >M1 marrow before infusion were nonresponders, whereas all 9 responders were in morphologic CR at the last evaluation before infusion (MRD-positive, n = 6; MRD-negative, n = 3). The median CART dose for responders and nonresponders was 2.65 cells/kg (range,  $1.6\text{-}4.6 \times 10^6$  cells/kg) vs 1.72 cells/kg (range,  $1.3\text{-}2.4 \times 10^6$  cells/kg), respectively. There were equal numbers of responders and nonresponders with prior HSCT (each n = 2). All 3 patients with previous blinatumomab exposure achieved MRD-negative CR.

Seven of 9 responders (78%) had ongoing CR at last follow-up, with only 1 patient undergoing HSCT in remission after CART. This patient underwent HSCT preemptively per the discretion of the treating physician. Two responders relapsed after CART. One underwent HSCT following relapse, and both remain alive at last follow-up. The median duration of follow-up for responders was 290 days (range, 137-856 days). Of the nonresponders, all remained refractory and 4 died (refractory disease, n = 3; transplant-related mortality, n = 1) with a median time to death of 71 days (range, 44-132 days). The median duration of follow-up for nonresponders

was 85 days (range, 44-389 days). The median time of the duration of B-cell aplasia was 171 days (28-414 days). The estimated post-CART 6-month EFS and OS in this cohort were 48% and 71%, respectively. Figure 1 illustrates each patient's disease course from the time of CART infusion through last follow-up.

Myeloid transformation has been described in *KMT2Ar* B-ALL following CD19-directed therapy.<sup>18-20</sup> Lineage switch, including myeloid transformation, is reported in infant B-ALL, independent of CART.<sup>21</sup> In this infant cohort, 4 patients (29%, 1 responder and 3 nonresponders) experienced myeloid transformation following CART, 3 of whom had *KMT2Ar*.

### Safety

Overall, CART was tolerable in this cohort, with 11 patients (79%) experiencing CRS of any grade and only 3 patients (21%) experiencing  $\geq$ grade 3 CRS. One patient with grade 3 CRS received tocilizumab, steroids, and anakinra. One patient with grade 4 CRS received steroids and anakinra. No other patients with CRS required medications for immune suppression. There was no neurotoxicity reported.

This analysis demonstrates that CART is feasible, tolerable, and associated with clinical responses in R/R infant B-ALL. Of patients in morphologic remission (with or without MRD) at the time of infusion, all achieved, and the majority maintained, an MRD-negative remission after CART. Conversely, all patients with high disease burden at time of CART infusion (>M1 marrow) were refractory to this therapy. Although further validation is necessary, these data suggest infants with >M1 marrow may be at high risk of nonresponse to CART. Additionally, MRD detection at day 28 after CART emerged as a poor prognostic indicator, with 80% of MRD-positive patients experiencing death, in contrast to 78% of patients achieving MRD-negative CR who remain alive with sustained durable responses at time of last follow-up. This is a promising outcome for this chemotherapy refractory cohort of patients.

There are a number of challenges associated with leukapheresis and manufacturing of CART in small patients such as those with infant B-ALL. In this cohort, only 1 of the 16 patients who underwent leukapheresis was unable to be infused because of manufacturing failure. This is in line with other reports showing feasibility of collection and manufacturing in this cohort.<sup>22</sup> Last, this report demonstrates the

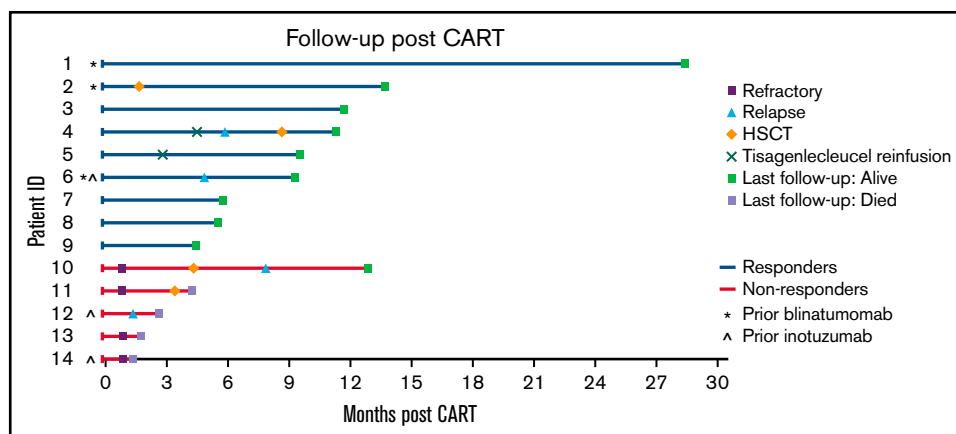


Figure 1. Swimmer plot illustrating the clinical course of patients with infant B-ALL following CART infusion.

safety of tisagenlecleucel in infant B-ALL with manageable CRS and no neurotoxicity reported. Although these data are limited by the small number of patients, retrospective nature, and short duration of follow-up, in the absence of a clinical trial, it highlights that incorporation of CART into the treatment for this highly chemotherapy-resistant population offers promise for future improvements in outcomes for R/R infant B-ALL. Larger studies to better understand the long-term outcomes in responders and optimal timing of therapy are needed.

## Acknowledgments

The authors appreciate the efforts of all those who have contributed data to the PRWCC. The authors also appreciate the support from Data, Regulatory, Administrative, and Contractual teams at Stanford University. The authors are thankful to our patients and families who allow the world to learn from them.

## Authorship

Contribution: A.M., L.P., E.M.G., E.H.B., and L.M.S. designed the study, performed data analysis and interpretation, wrote the initial manuscript draft, and contributed to subsequent revisions of the manuscript; C.B. and S.P. assisted with data collection and analysis; and all authors provided assistance with data collection, interpretation of data, and reviewed the manuscript.

Conflict-of-interest disclosure: C.L.P. reports an advisory committee for Novartis. H.E.S. reports Novartis ad board and

speakers bureau. S.P.M. reports ad boards for Novartis and Jazz. M.R.V. reports Novartis ad board, consulting and stocks for Fate Therapeutics and Bmogen, and consulting for Uptodate. G.D.M. reports Novartis ad board and speakers bureau and consulting for Eliana Trial and on Steering Committee. P.A.B. reports ad boards for Servier, Jazz, Novartis, and Janssen. M.Q. reports Novartis ad board and Mesoblast. M.L.H. reports Novartis ad board and Sobi ad board. P.S. reports Consulting or Advisory Role for Mesoblast and Takeda. K.J.C. reports research support and consulting for Novartis. C.L.M. reports consulting for Lyell Pharmaceuticals, Apricity, BMS, Medimmune Tech, and Nektar and equity from Allogene, Apricity, and Lyell Pharmaceuticals. T.W.L. reports consulting for Novartis, Cellectis, and Bayer and research funding from Novartis, Pfizer, and Bayer. E.M.G. reports consulting for Syndax Pharmaceuticals. The remaining authors declare no competing financial interests.

ORCID profiles: S.P., 0000-0001-8589-3087; J.R., 0000-0003-0471-9883; M.R.V., 0000-0002-7097-5917; P.A.B., 0000-0002-8653-1069; V.A.F., 0000-0002-8405-1141; C.L.M., 0000-0003-0359-9023; T.W.L., 0000-0002-8497-3138.

Correspondence: Amy Moskop, Division of Hematology/Oncology/Blood and Marrow Transplantation, Department of Pediatrics, Medical College of Wisconsin and Children's Wisconsin, 8701 W Watertown Plank Rd, MFRC 3018, Milwaukee, WI 53226; e-mail: amoskop@mcw.edu.

## References

1. Guest EM, Stam RW. Updates in the biology and therapy for infant acute lymphoblastic leukemia. *Curr Opin Pediatr*. 2017;29(1):20-26.
2. Pieters R, Schrappe M, De Lorenzo P, et al. A treatment protocol for infants younger than 1 year with acute lymphoblastic leukaemia (Interfant-99): an observational study and a multicentre randomised trial. *Lancet*. 2007;370(9583):240-250.
3. Pieters R, De Lorenzo P, Ancliffe P, et al. Outcome of infants younger than 1 year with acute lymphoblastic leukemia treated with the Interfant-06 protocol: results from an international phase III randomized study. *J Clin Oncol*. 2019;37(25):2246-2256.
4. Driessen EM, de Lorenzo P, Campbell M, et al. Outcome of relapsed infant acute lymphoblastic leukemia treated on the interfant-99 protocol [published correction appears in *Leukemia*. 2017;31(12):2854]. *Leukemia*. 2016;30(5):1184-1187.
5. Brown PA, Kairalla JA, Hilden JM, et al. FLT3 inhibitor lestauritinib plus chemotherapy for newly diagnosed KMT2A-rearranged infant acute lymphoblastic leukemia: Children's Oncology Group trial AALL0631 [published correction appears in *Leukemia*. 2021;35(5):1527]. *Leukemia*. 2021;35(5):1279-1290.
6. Tomizawa D, Miyamura T, Imamura T, et al. A risk-stratified therapy for infants with acute lymphoblastic leukemia: a report from the JPLSG MLL-10 trial [published correction appears in *Blood*. 2022;139(18):2848]. *Blood*. 2020;136(16):1813-1823.
7. Annesley C, Summers C, Pulsipher MA, et al. Clinical experience of CAR T cell immunotherapy for relapsed and refractory infant ALL demonstrates feasibility and favorable responses. *Blood*. 2019;134(suppl 1):3869.
8. Ibrahimova A, Pommert L, Breese EH. Acute leukemia in infants. *Curr Oncol Rep*. 2021;23(3):27.
9. Maude SL, Teachey DT, Rheingold SR, et al. Sustained remissions with CD19-specific chimeric antigen receptor (CAR)-modified T cells in children with relapsed/refractory ALL. *J Clin Oncol*. 2016;34(15):3011.
10. Grupp SA, Maude SL, Shaw PA, et al. Durable remissions in children with relapsed/refractory ALL treated with T cells engineered with a CD19-targeted chimeric antigen receptor (CTL019). *Blood*. 2015;126(23):681.
11. Maude SL, Laetsch TW, Buechner J, et al. Tisagenlecleucel in children and young adults with B-cell lymphoblastic leukemia. *N Engl J Med*. 2018;378(5):439-448.
12. Novartis. Prescribing information (Kymriah). East Hanover, NJ: Novartis Pharmaceuticals Corp; 2017. Available at <https://www.us.kymriah.com/follicular-lymphoma-adults/>. Accessed 7 June 2022.
13. Qasim W, Zhan H, Samarasinghe S, et al. Molecular remission of infant B-ALL after infusion of universal TALEN gene-edited CAR T cells. *Sci Transl Med*. 2017;9(374):eaaj2013.

14. Moskop A, Pommert L, Thakrar P, Talano J, Phelan R. Chimeric antigen receptor T-cell therapy for marrow and extramedullary relapse of infant acute lymphoblastic leukemia. *Pediatr Blood Cancer*. 2021;68(1):e28739.
15. Breese EH, Krupski C, Nelson AS, Perentesis JP, Phillips CL. Use of CD19-directed CAR T-cell therapy in an infant with refractory acute lymphoblastic leukemia. *J Pediatr Hematol Oncol*. 2021;43(4):152-154.
16. Lee DW, Santomaso BD, Locke FL, et al. ASTCT consensus grading for cytokine release syndrome and neurologic toxicity associated with immune effector cells. *Biol Blood Marrow Transplant*. 2019;25(4):625-638.
17. Neelapu SS, Tummala S, Kebriaei P, et al. Chimeric antigen receptor T-cell therapy – assessment and management of toxicities. *Nat Rev Clin Oncol*. 2018;15(1):47-62.
18. Brown P, Pieters R, Biondi A. How I treat infant leukemia. *Blood*. 2019;133(3):205-214.
19. Rayes A, McMasters RL, O'Brien MM. Lineage switch in MLL-rearranged infant leukemia following CD19-directed therapy. *Pediatr Blood Cancer*. 2016;63(6):1113-1115.
20. Gardner R, Wu D, Cherian S, et al. Acquisition of a CD19-negative myeloid phenotype allows immune escape of MLL-rearranged B-ALL from CD19 CAR-T-cell therapy. *Blood*. 2016;127(20):2406-2410.
21. Sakaki H, Kanegane H, Nomura K, et al. Early lineage switch in an infant acute lymphoblastic leukemia. *Int J Hematol*. 2009;90(5):653-655.
22. Eldjerou LK, Acker C, Howick D, et al. Tisagenlecleucel manufacturing feasibility in patients less than 3 years of age with relapsed/refractory acute lymphoblastic leukemia. *Blood*. 2019;134(suppl 1):5066.