

UCLA
Contemporary Music Score Collection

Title

Lo que nos deja ver el viento

Permalink

<https://escholarship.org/uc/item/7dk2z04n>

Author

Arias, Jorge Daniel

Publication Date

2020

“Lo que nos deja ver el viento”

(‘What the wind lets us see’)

Jorge Daniel Arias

Chamber music

Brief description of the work

It is a work whose primary materials are some of the chords of the beginning of Stravinsky's 'Symphonies of Wind Instruments' and a melody segment from the beginning of Debussy's single flute "Syrinx", with no intention of being an audible quote. They are generators of harmonies and rhythmic sequences of the work, through different procedures. The work has different moments of contrast between more timbre-centric sonorities, combining different usual techniques with extended instrument techniques, and full loudness segments typical of conventional use. Orchestration is a derivation of a Jazz formation, with extensions. A small tribute to the wind and the winds in general.

Chamber

Clarinet Eb

Clarinet Bb

Alto Sax

Baritone Sax

Trombone

2 percussionists:

Grand Cassa

Plate Ride

Antique Cymbals or Glockenspiel,

Triangle

Tam-Tam

Snare

Cowbell

2 Congas

Vibraphone

Piano

Violin

Bass

Notes on execution

Score is written in C.

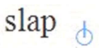

The double bass sound to the inferior octave, glockenspiel sounds two octaves higher.

Piccolo sounds one octave higher.

The strings must be played, preferably, without vibrato. When it's indicated, it only references the note.

Clarinet

Finger Vib. : vibrato using keys or alternative positions to be played by the musician.

slap =  with sound  only reed

Cuerdas



Execute percussing the appoggiatura with the finger of the left hand against the string and holding the note, achieving a sonority similar to a pizzicato, allowing quickly the execution of the posterior note.

golpe en la caja


93



Hit with the knuckles of the hand on the part of the box with more resonance


Percussion

Superball drumsticks are used for the 'gran cassa' (An "S" indicates the drumstick icon). If not available, use the thumb.

hit on the outer edges perpendicularly. 

Scrape the plate from the center (cusp) towards the edge, quickly.



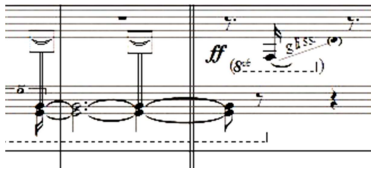
Gran Cassa: edges 

Piano

The executions inside the piano are marked by a box.



Pizzicato: inside the piano, make use of the pedal. Play using the fingers or a plectrum, if you wish.



Scrap the indicated string/s with the nail or a plectrum.

'Golpe en la caja': hit ⁹³ any resonant part of the piano.



lo que nos deja ver el viento

Jorge Daniel Arias

Lento $\text{♩} = 60$

Clarinet in Eb
p *mp*

Clarinet in Bb
p *mf*

Alto Saxophone
p

Baritone Saxophone
p

Trombone
p *mp*

Perc 1
Gran Cassa *p*
Plato Ride
Tam-tam

Perc 2
Snare Drum
Congas

Vibraphone
motor off *p* *mp* motor on *Red.*

Piano
pizz. *mp* *mp*

Violin
con sord. *p* *mp* *p* *mp*

Contrabass
con sord. *mp* *p* *mp*

5

E♭ Cl. *pp* *mp* *p* 8 seg

Cl. *pp* *mp* *p* 8 seg

Alto Sax. *pp* *mp* *p* 8 seg

Bari. Sax. *pp* *mp* *p* 8 seg

Tbn. *pp* *mp* *p* 8 seg

G. C. *mp* 3 l.v. 8 seg

Cym. *mp* 3 l.v. 8 seg

T.-t. *p* 3 l.v. 8 seg

Congas *p* 8 seg

Vib. *ped.* 3 8 seg

Pno. *ppp* *mf* *ffz* 3 8 seg
motor off
golpe en la tabla

Vln. *ppp* flautato *p* nat. 3 8 seg

Cb. *p* pizz. arco 3 8 seg

A

Eb Cl. *vib.*
mf *p* *ppp*

Cl. *vib.*
mf *p*

Alto Sax. *vib.*
mf *p*

Bari. Sax. *vib.*
mf *p*

Tbn. *con sord.*

G. C. *mp* *l.v.*

Cym. *pp* *l.v.* *mp*

Congas *+*

Vib. *pp* *Red.*

Pno. *mp* *pizz.* *sfz* *pp sempre una corda*

Vln. *vib.* *col legno batutto* *mf*

Cb. *senza sord.* *vib.* *col legno batutto* *pizz.* *mf* *sfz* *pp*

B

più mosso ♩ = 70

Eb Cl.
 Cl.
 Alto Sax.
 Bari. Sax.
 Tbn.
 G. C.
 Cym.
 Congas
 Vib.
 Pno.
 Vln.
 Cb.

Dynamics: *pp*, *p*, *mf*, *mp*, *f*, *sfz*, *ppp*, *mp*, *p*, *mf*, *mp*, *pp*, *mp*, *ppp*, *sfz*, *mp*, *ppp*, *sfz*, *pp*, *p*, *pp*.
 Performance instructions: *arco*, *sul pont.*, *flz*, *nat.*, *l.v.*, *Antique Cymbals*, *Red.*, *p subito*.
 Other markings: *sfz*, *ppp*, *sfz*, *ppp*, *sfz*, *mp*, *ppp*, *sfz*, *pp*.

17

E♭ Cl. *pp*

Cl. *pp*

Alto Sax. *pp*

Tbn. senza sord.

G. C. *pp*

Cym.

Vib. *mf* *mp*

Pno. *mp*
tre corde

Vln. *pp* *mp* molto vib. nat.

Cb. *pp* *mp*

Detailed description of the musical score: The score is for page 5, measures 17-20. It features ten staves for different instruments. The Eb Clarinet, Clarinet, and Alto Saxophone parts begin in measure 17 with a triplet of eighth notes, marked *pp*. The Trombone part is marked 'senza sord.'. The Glockenspiel and Cymbal parts have a triplet of eighth notes in measure 17. The Vibraphone part has a triplet of eighth notes in measure 17, marked *mf*, and a triplet of eighth notes in measure 20, marked *mp*. The Piano part has a triplet of eighth notes in measure 17, marked *mp*, and a triplet of eighth notes in measure 20. The Violin part has a triplet of eighth notes in measure 17, marked *pp*, and a triplet of eighth notes in measure 20, marked *mp*. The Cello part has a triplet of eighth notes in measure 17, marked *pp*, and a triplet of eighth notes in measure 20, marked *mp*. The score includes various articulations such as accents, slurs, and trills.

20

E♭ Cl.

Cl.

Alto Sax.

Bari. Sax.

Tbn.

G. C.

Cym.

T.-t.

Vib.

Pno.

Vln.

Cb.

pp

ppp

fff

mf

l.v.

motor on

Red.

loco

p

sul pont.

arco

pp

pp

ppp

fff

mf

l.v.

pp

motor on

Red.

loco

p

sul pont.

arco

pp

pp

Moderato

(♩ = ♩) ♩ = 105

Score for Eb Cl., Cl., Cym., T.-t., Congas, Vib., Pno., Vln., and Cb. with various musical notations and dynamics.

Eb Cl.: *pp*, includes a triplet and a trill.

Cl.: *mp* (triplet), *pp* (trill).

Cym.: Antique Cymbals (*p* l.v.), Triangle (*pp*), Cymbals (*pp*).

T.-t.: (*pp*).

Congas: (*pp*).

Vib.: motor off, (*p*), Ped. (pedal).

Pno.: una corda (*pp*).

Vln.: nat., *mp* (triplet), *pp* (sul tasto), Golpe en la caja.

Cb.: nat., *mp* (triplet), *pp*, *mp*.

D

fing. vib.

E♭ Cl. 27 *mp* *pp*

Cl. *mp* *p* molto vib.

Alto Sax. *pp* *p*

Bari. Sax. *p*

Tbn. *p* *mf*

Pno. tre corde *sfz* *ped.* golpe en la tabla

Vln. senza sord. *ppp* *p*

Cb. *f* pizz. *ppp*

30

E♭ Cl. *ff*

Cl. *f*

Alto Sax. *mf* *p*

Bari. Sax. *f* *p*

Tbn. *p*

Cym.

T.-t.

Congas

Pno. *una corda* *pp*

^ Ped.

Cb. *arco* *p*

32

E♭ Cl.

Cl.

Alto Sax.

Bari. Sax.

Tbn.

Cym.

T.-t.

Congas

Pno.

Cb.

p

f

mp

sfz

f

p

l.v.

Red.

tre corde

34 sonido soplado

Bari. Sax. *f* *pp*

Tbn. *p* *mf*

G. C. *p*

Pno. *p*

Cb. *mf*

36 solo aire

Bari. Sax. *p*

Tbn. *p* *p*

G. C. *mp*

Pno. *ppp*

Cb. *pp* *mf*

39

Bari. Sax.

mf

f

frull.

Tbn.

f

Cb.

p



E

Cl.

molto sonore

f

3 3 3 3

sonido soplado

solo aire (sh)

pp [*f*]

Bari. Sax.

p

3

sonido soplado

solo aire (sh)

pp [*f*]

Tbn.

mp

G. C.

p

mp

S. D.

p

mp

Cb.

F

Eb Cl. *ppp* *sfz* *p*
 Cl. *ppp* *sfz* *ppp*
 Alto Sax. *ppp* *sfz* *ppp*
 Bari. Sax. *p*
 Tbn. *mf* *p* *sfz*
 G. C. *mf* l.v.
 Cym. *p* l.v.
 T.-t. *p*
 S. D. *mf* *pp* *mf*
 Vib. *p* *sfz* *Red.*
 Pno. *p* *sfz*
 Vln. *p* *sfz* *p* *sul pont.*
 Cb. *sfz* *f* *sfz*

Meno mosso

♩=90

49

E♭ Cl.

Cl. fing. vib.

Alto Sax.

Bari. Sax. *mf*

Tbn. *mp* *ppp* *ffz*

G. C. *mp*

Congas *mp* *mf* *p*

Vib. *p*

Pno. *golpe en la tabla* *mp*

Vln. *ped.*

Cb. *pizz.* *mf* *mp* *Golpe en la caja*



55

Congas *mf* *pp* *mp* *sfz* *f*

Cb. *Golpe en la caja* *mp*

H

63

slap \circ

sfz

slap \circ

sfz

slap \circ

sfz

slap \circ

sfz

molto vib.

mp

sfz pp *f* l.v.

sfz pp *f* *p* *mf* l.v.

p *p* l.v.

pp *sfz pp* *f* *p* *mf* *+*

f *sfz* *+*

golpe en la tabla *f*

mf *+* *8vb*

arco *p* *mf*

69

p *mf* *p*

sfz *sfz* *mp* *pp*

sfz *sfz* *sfz*

sfz *sfz* *sfz*

p

p *l.v.*

p

sfz *sfz* *sfz* *sfz* *sfz*

pizz. *pizz.* *pizz.*

pp *pp*

pp

sul tasto *sul tasto*

75

E♭ Cl. *sfz pp subito*

Cl. *sfz pp subito*

Alto Sax. *sfz pp subito*

Bari. Sax. *sfz pp subito*

Tbn. *sfz ppp*

Cym. *l.v.*

C. Bell *Perc I arco p mf*
Caja (Snare Drum) c/ sordina

Congas *pp mf p*

Vib. *p*

Pno. *p f f*

Red. *8^{va}*

Vln. *nat. mf pp sfz pp subito*

Cb. *nat. mf sfz pp subito p*

I

Meno mosso

3 seg. ♩ = 70

79

E♭ Cl. *ppp*

Cl. *ppp*

Alto Sax. *ppp*

Bari. Sax. *ppp*

Tbn. *mp* frull. con sord. *ppp*

G. C. *sfz pp* *mf* *pp* 3 seg.

S. D. Perc 1 *mp*

Congas *mp* *f* *p* 3 seg.

Vib. *ppp* Ped.

Pno. *ppp* una corda!

Vln. con sord. sul tasto *ppp* 3 seg.

Cb. con sord. *sfz* pizz. *mp* *pp* 3 seg.

Golpe en la caja

J

frull.

86

Eb Cl.
 Cl.
 Alto Sax.
 Bari. Sax.
 Tbn.
 G. C.
 S. D. (Perc 2) Cowbell
 Vib.
 Pno.
 Vln.
 Cb.

frull.
 frull.
 frull. solo aire (sh)
 frull. solo aire (sh)
 frull. senza sord.
 pp
 mp
 pp
 mp
 Led.
 Led.
 Led.
 Led.
 pp sempre
 tre corde
 Led.

I.v.

91

Cl.

Alto Sax.

Bari. Sax.

G. C.

C. Bell

Congas

Vib.

Pno.

Vln.

senza sord.

p

93

Cl.

Vib.

Pno.

p sempre legato

95

Cl.

Alto Sax.

Vib.

Pno.

p sempre legato

Red.

Detailed description: This system covers measures 95 and 96. The Clarinet part features a melodic line with triplets. The Alto Saxophone part is marked *p sempre legato* and includes triplets. The Vibraphone part has a triplet and a *Red.* marking. The Piano part provides harmonic support with chords and triplets.

97

E♭ Cl.

Cl.

Alto Sax.

Bari. Sax.

Tbn.

Vib.

Pno.

Cb.

mp

pp

mf

p

mf

p

pizz.

Red.

slap

Detailed description: This system covers measures 97 through 100. The E♭ Clarinet part starts at measure 97 with a *mp* dynamic. The Clarinet part continues with triplets. The Alto Saxophone part has triplets and ends with a *pp* dynamic. The Bari. Saxophone part has a *mf* dynamic and a *slap* marking. The Tuba part has a *p* dynamic. The Vibraphone part has a *mf* dynamic and a *p* dynamic. The Piano part has a *pizz.* marking and a *Red.* marking. The Contrabass part has a *p* dynamic and triplets.

K

Score for Eb Cl., Cl., Alto Sax., Bari. Sax., Tbn., Vib., Pno., and Cb. The score is divided into two systems by a vertical dashed line. Dynamics include *mp*, *mf*, *p*, and *frull. nat.*. Articulations include triplets and slurs. A *Red.* (Reduction) line is present under the Vib. staff.

Instrumentation: Eb Cl., Cl., Alto Sax., Bari. Sax., Tbn., Vib., Pno., Cb.

Measure 1 (Left of dashed line):

- Eb Cl.: Rest
- Cl.: Triplet eighth notes (F#, G, A), triplet eighth notes (B, C, D), triplet eighth notes (E, F, G)
- Alto Sax.: *mf*, slur over notes
- Bari. Sax.: *p*, eighth notes with slurs
- Tbn.: Eighth notes with slurs
- Vib.: *mf*, eighth notes with slurs
- Pno.: Eighth notes with slurs
- Cb.: Eighth notes with slurs

Measure 2 (Right of dashed line):

- Eb Cl.: *mp*, notes with slurs
- Cl.: Triplet eighth notes (F#, G, A), triplet eighth notes (B, C, D), triplet eighth notes (E, F, G)
- Alto Sax.: *p*, triplet eighth notes (F#, G, A), triplet eighth notes (B, C, D), triplet eighth notes (E, F, G)
- Bari. Sax.: *p*, eighth notes with slurs, *frull. nat.* marking
- Tbn.: Eighth notes with slurs
- Vib.: *p*, eighth notes with slurs, *Red.* line below
- Pno.: Eighth notes with slurs
- Cb.: Eighth notes with slurs

101

rall.

pp

pp

pp

pp *p* *mf*

frull. *frull.* *frull.*

pp

pp *mp* *p*

vib. *vib.*

pp *mp* *p*

pp

L

Tempo primo

♩ = 56

103

E♭ Cl. *ppp*

Cl. *ppp*

Alto Sax. *ppp*

Bari. Sax. *pp* frull. *mf* slap *ppp*

Tbn. *ppp* colla mano

G. C. *mf* l.v.

Vib. *ppp* Led.

Pno. *mp* pizz. Led.

Vln. *mp* arco

Cb. *sfz* arco *ppp*

M

N

Libre

, Molto preciso

109

E♭ Cl. *pp*

Cl. *pp* 5 5 5

Alto Sax. *pp* 5 5 5

Bari. Sax. *pp* 5 5 5

Tbn. *pp* nat. 5 5 5

Vib. *mf* *pp* Red.

Pno. *sfz* + *v*

Vln. *pp* *v*

Cb. *espress. vib.* *ff*

116

Instrumentation: Eb Cl., Cl., Alto Sax., Bari Sax., Tbn., Vib., Pno., Vln., Cb.

Measure 116: Eb Cl., Cl., Alto Sax., Bari Sax., Vib., Vln. play melodic lines. Bari Sax. and Tbn. play five-note patterns. Vib. has *Ped.* markings. Vln. has *vib.* and *mf* markings.

Measure 117: Similar melodic lines. Bari Sax. and Tbn. continue five-note patterns. Vib. has *Ped.* markings. Vln. has *vib.* and *mf* markings.

Measure 118: Similar melodic lines. Bari Sax. and Tbn. continue five-note patterns. Vib. has *Ped.* markings. Vln. has *vib.* and *mf* markings.

Measure 119: Similar melodic lines. Bari Sax. and Tbn. continue five-note patterns. Vib. has *Ped.* markings. Vln. has *vib.* and *mf* markings.

Measure 120: Similar melodic lines. Bari Sax. and Tbn. continue five-note patterns. Vib. has *Ped.* markings. Vln. has *vib.* and *mf* markings. Pno. and Cb. have *Ped.* markings. Vln. has *pp* markings.

121

E♭ Cl. *mp*

Cl. *mp*

Alto Sax. *mp* *mf* *pp* *molto vib.*

Bari. Sax. *mp*

Tbn. *mf* *ppp*

Cym. *p* *l.v.*

T-t. *p* *l.v.*

Vib. *mp* *Red.* *sfz*

Pno. *mp* *f* *sfz*

Vln. *mf* *vib.* *mp* *3*

Cb. *mp*

Detailed description of the musical score: The score is for measures 121-124 in 4/4 time. The Eb Clarinet part (top) plays a melodic line with slurs and accents, starting at *mp*. The Clarinet part has a similar line with slurs and accents, also at *mp*. The Alto Saxophone part has a melodic line with slurs and accents, starting at *mp*, moving to *mf* and then *pp* with the instruction *molto vib.*. The Baritone Saxophone part has a melodic line with slurs and accents, starting at *mp*. The Trombone part has a melodic line with slurs and accents, starting at *mf* and moving to *ppp*. The Cymbal and Tom-tom parts have sparse rhythmic patterns, with the Tom-tom marked *p* and *l.v.*. The Vibraphone part has a melodic line with slurs and accents, starting at *mp* and moving to *sfz*. The Piano part has a complex melodic line with slurs and accents, starting at *mp* and moving to *f* and *sfz*. The Violin part has a melodic line with slurs and accents, starting at *mf* and moving to *mp*. The Contrabass part has a melodic line with slurs and accents, starting at *mp*. The score includes various musical notations such as slurs, accents, and dynamic markings.



Più mosso

♩=70

126

E♭ Cl.

Cl.

Alto Sax.

Bari. Sax.

S. D.

Vln.

Cb.

s/ bordona

mp

arco

130

Bari. Sax.

T.-t.

S. D.

Vib.

Pno.

Vln.

Cb.

slap

f

l.v.

mp

p

ff

p

ff

p

con bordona

mf

Red.

pizz.

mf

Golpe en la tabla

sfz

Red.

Golpe en la caja

pizz.

Golpe en la caja

mf

135

E♭ Cl. *mf* *sffz*

Cl. *ppp* *mf* *sffz*

Alto Sax. *p* *sffz*

Bari. Sax. nat.

G. C. *pp* *mp*

S. D. *p*

Vib. *p* *sffz*

Pno. *f*

Vln. *sffz* *mf* *mp* *p*

Cb. *mf*

Articulations: *ppp*, *pp*, *p*, *mf*, *mp*, *f*, *sffz*, *vib.*, *arco*, *pizz.*, *Red.*, *nat.*

Tempo/Performance markings: *Red.*

Rehearsal marks: 5, 7, 8

139 **Q**

E♭ Cl. *pp*

Vib. *pp* *Red.*

Pno. *pp* *una corda* *mp pizz.* *pp* *Red.*

Vln. *Red.*

147 **R** **S**

Tbn. *pp* *colla mano*

G. C. *p* *sfz* *6 seg*

Cym. *Antique Cymbals* *p* *6 seg*

T.-t. *p*

Congas *p* *sfz*

Vib. *motor on*

Pno. *tre corde* *3* *3* *15^{ma}* *6 seg* *sfz* *Red.* *15^{mb}*

Vln. *Red.* *sfz*

Cb. *arco* *molto vib.* *pizz.* *Golpe en la caja* *pp* *sfz*

T

156

Instrumentation and Dynamics:

- E♭ Cl.:** *ppp* (measures 158-159)
- Cl.:** *sfz*, *pp*, *mp*, *pp*, *vib.* (measures 158-159)
- Alto Sax.:** *pp*, *vib.* (measures 158-159)
- Bari. Sax.:** *sfz ppp subito*, *pp* (measures 158-159)
- Tbn.:** *nat.*, *sfz* (measures 158-159)
- G. C.:** *sfz*, *f* → *p*, *mf* → *p*, *l.v.* (measures 158-159)
- Triangle:** *l.v.*, *p* (measures 158-159)
- Tri.:** *p* (measures 158-159)
- T-t.:** *l.v.*, *p* (measures 158-159)
- S. D.:** *sfz* (measures 158-159)
- Congas:** *sfz* (measures 158-159)
- Pno.:** *sfz*, *mf*, *p* (measures 158-159)
- Vln.:** *sfz* (measures 158-159)
- Cb.:** *sfz* (measures 158-159)

Performance Instructions:

- sfz ppp subito* (Bari. Sax.)
- nat.* (Tbn.)
- l.v.* (Triangle, Tri., T-t., Pno., Vln., Cb.)
- vib.* (Cl., Alto Sax.)
- Red.* (Pno., Vln.)

Articulations and Rhythmic Markings:

- Triplet markings (3) over notes in Cl., Alto Sax., Bari. Sax., and Pno. staves.
- 5:3 ratio markings over notes in G. C. and T-t. staves.
- Accents (*sfz*) on notes in Bari. Sax., G. C., S. D., Congas, Pno., Vln., and Cb. staves.
- Phrasing slurs and ties across measures.

162

fing. vib.

Eb Cl.

Cl.

Alto Sax.

vib.

Bari. Sax.

mp pp

Tbn.

5:3 5:3 l.v.

G. C.

mp p mp > p mp mp

Tri.

T.-t.

S. D.

Congas

Vib.

8va 8va

Pno.

golpe en la tabla

mp

Ped.

Vln.

(15) ...

Cb.